

**Campaign for Real Ale**

**A Guide to the Pubs of**

# **Holborn and Bloomsbury**

**£1**



**Over 50 central London pubs listed and reviewed**



**YOUNG'S**



**THE LAMB**

# **A Guide to the Pubs of Holborn and Bloomsbury**

*Edited by Gary White*

*First Edition February 2003      © CAMRA 2003*

*Published by the North London Branch of the Campaign for Real Ale*

*Printed by Thorndale Benedict Print Services, Unit 8D, Brewery Industrial Estate,  
Wenlock Rd, London, N1 7XS.*

***This Guide has been surveyed, edited and produced by members of the North London Branch of The Campaign for Real Ale, c/o 230 Hatfield Road, St. Albans, Hertfordshire, AL1 4LW, 01727 867201.***

***Every effort is made to ensure the accuracy of information contained in the Guide but no responsibility can be accepted for errors and it is inevitable that some pubs will change their character during the currency of the Guide.***

Cover photography credits

*All photographs taken by Gary White on a Canon Powershot G3 digital camera*

*Front Cover / Inside Front Cover – The Lamb, Lamb's Conduit Street, WC1*

*Inside Back Cover – The Calthorpe Arms, Gray's Inn Road, WC1*

## **Editor's Introduction**

Many thanks for purchasing our little guide. We have attempted to list every licensed establishment in the London postcode area of WC1, that serves real ale (see below). WC1 covers the traditional settlements of Bloomsbury and Holborn, an important commercial and business area in central London, served well by the tube stations of Russell Square, Goodge Street, Tottenham Court Road, Holborn, Euston and Kings Cross.

The pub industry in central London, as within many parts of the UK generally, has undergone great change over the last decade. Pubs close and open at short notice, managers come and go and pubs are refitted, change ownership or transmogrify within two weeks from serving little or no food, to expensive, up-market *gastro-pubs*, sometimes with beer as a second thought. Therefore, the entries in this Guide are subject to change but were as accurate as possible at the time of surveying, in late 2002.

This Guide has been produced by volunteers in the North London Branch of the *Campaign for Real Ale*. Without their work on the ground, completing survey forms and providing the copy for this Guide, our publication would not have been possible. I would therefore like to thank the following people who gave up their own free time to survey the pubs listed in this book:

John Cryne

Christine Cryne

Mike Rose

Edgar Belka

Mick Lewis

Keith Mapstone

Helen Evans

Mark Hoile

Tunde Zelenyanszky

Laurence Fryer

Sue Brayley

## **How To Use This Guide**

- Pubs are listed alphabetically (ignoring articles in the titles)
- All entries include postal address, opening hours, pub ownership details, beers sold and details of any food served.
- There is a description of each pub, which reflects the opinion of the surveying author and does not necessarily represent the opinion of CAMRA.
- We list the website address where one exists.
- Only pubs selling real ale are listed. Approximately 15 pubs in the WC1 area were not included in the Guide, as they did not sell real ale at the time of surveying.

Gary White, March 2003

✉ gwhitegeog@bigfoot.com

## **Introduction to the Guide**

Welcome to this comprehensive guide to the real ale pubs of the WC1 postal district. Seven years ago, the North London Branch of CAMRA produced a guide to all the pubs in its Branch area that sold real ale. With the rapid changes in the pub scene, rather than produce such a large guide, instead we intend to select a number of smaller areas that are of interest to the beer lover. We have started with the most central area that we cover. To the North it is bounded by the major stations of Euston, St Pancras and Kings Cross, to the East is the massive Mount Pleasant postal sorting centre, to the South is Holborn and Gray's Inn and to the West, Bloomsbury, the British Museum and University College London. It is an area of small retreats and still considerable individuality, places such as Red Lion Square and Lamb's Conduit Street, Russell Square and Coram's Fields. Pub ownership was once very concentrated in the hands of the big brewers, especially Bass and Whitbread. But now most of the pubs are owned by the new giant pub companies that have sprung up in their wake, with a smattering of true free houses, and the odd outposts of independent brewers, such as Greene King, Sam Smiths, Shepherd Neame and Young's, to whom we are very grateful for sponsoring this guide.

## **North London Branch – the myth & reality**

CAMRA's North London branch is not all full of the stereotypical real ale drinker that the media likes to portray. It has both male and female members from all walks of life and age. However, they do have one thing in common: the love of good beer and pubs. As with all CAMRA branches, the members are volunteers. They visit pubs and breweries as well as running the London Drinker Beer & Cider Festival, which takes place every March near King's Cross.

The branch is very sociable and welcomes all CAMRA members into its midst. It even has a tradition of buying new faces a pint, if you can catch the Treasurer! But it has a serious side. It has been active in campaigning to save various pubs, either from closure or from unsympathetic alterations. It runs a "pub of the season" to encourage pubs that are promoting good real ale and it produces a bi-monthly newsletter, the Full Pint. The branch is always looking for people to feedback pub news for the Full Pint and distribute the newsletter around pubs. If you are interested, come and make contact. Details can be found at [www.camranorthlondon.org.uk](http://www.camranorthlondon.org.uk)

## **What is CAMRA?**

CAMRA, the Campaign for Real Ale, was formed in the early 1970s. Today it has over 50,000 members. The Campaign continues to promote good quality beer and variety as well as campaigning against pub closure and fighting for the rights of all pub users. Despite many successes, there continues to be brewery closures but fortunately the good fortunes of many new microbrewers means that the public still has a wealth of beer varieties to choose from. However, availability remains a concern for many of these tiny breweries. Many pubs are owned by pub chains, not breweries. These chains often demand huge discounts, which small breweries cannot match, even with the tax benefits given in 2002. CAMRA is campaigning for the sliding beer duty so that there can be even competition. The Campaign successfully has many pubs (as well as breweries) listed so that the pub owner cannot damage the heritage that they are entrusted with. Moreover, although it looks as if we may now get sensible licensing hours, we still do not have a full pint. You can help by adding your voice to ours. You can join CAMRA and help us protect pubs and beer. Surely less than 30p a week is a small price to pay?

## **What is real ale?**

Real ale or cask-conditioned ale suffers neither filtration nor pasteurisation in the brewery. It still contains sufficient yeast and sugars for it to continue to ferment and mature in the cask. Once it has reached the pub cellar, it has to be laid down for maturation to continue and for the yeast to settle to the bottom of the cask. It is best served at cellar temperature, which is around the mid-50s Fahrenheit (12-13°C). In the cellar, cask beer has to be nurtured to maturity and condition – this involves releasing the extra gasses produced by the secondary fermentation process, but not too much, otherwise the beer will go flat. Real ale is a living product and once a cask is opened it has a limited shelf life. It needs to be consumed in a few days, otherwise it will become flat and vinegary flavours will develop through contact with oxygen. You can also get real ale in a bottle – or bottle conditioned ale. The beer contains sufficient yeast and sugars to allow fermentation and maturation in the bottle.

## **Short Measure?**

By law, you are entitled to ask for a top up if you are served a pint (or half pint) that is not a full measure. On most occasions (provided you are polite) then staff are usually well trained enough to do so without complaint. If you are refused, then please contact your local Trading Standards department who will usually take it from there. It is only by constant assertion of consumer rights will we put an end to the practice of short pints. After all, you wouldn't accept 5 apples if you paid for 6!

## **Real Cider in WC1?**

Cider is making a major comeback in popularity but Real Cider is still difficult to find indeed none of the pubs listed in the Guide were doing so when surveyed. Most cider that you will find in pubs today has been pasteurised with carbon dioxide added. The resulting drink bears little resemblance to the full-flavoured taste of traditional Real Cider.

## **CAMRA Beer Festivals**

There are around seven beer festivals run by CAMRA volunteers in Greater London. All have oversized glasses guaranteeing a full pint every time. They also offer a discount to CAMRA members so if you like beer festivals, joining CAMRA will mean that you will save money. So what are you waiting for? Fill in the form in this guide now or visit the web site: [www.camra.org.uk](http://www.camra.org.uk)

## **Great British Beer Festival**

With over 700 real ales, imported beers and ciders, this Festival is a haven for anyone who appreciates variety and a good drop. It takes place at Olympia in West London every August and attracts over 40,000 visitors from around the world. Visit the web site: [www.gbbf.org](http://www.gbbf.org) for more details.

## All Bar One

108 New Oxford Street, WC1A 1HD

Tel: 020 7307 7908

**Open:** 12-11 Monday to Saturday; closed Sunday

**Pub ownership:** Six Continents (formerly Bass)

**Beers:** Fuller's London Pride

**Food:** Every day until 10 pm

Contains all the usual features of the chain – full-length windows, settees, and large wooden tables but for all that, it uses the odd shaped site quite well. Non-smokers will appreciate the large, upstairs no smoking area; there's a large clock to catch the eye and mirrors are well used to create a feeling of space. Wheelchair users are also well catered for. Makes a point of saying over 21s only and no children. Food is served until 10.00pm.

## Apple Tree

45 Mount Pleasant, WC1X OAE

Tel: 020 7837 2365

**Open:** 11 – 1am (sic); closed weekends

**Pub ownership:** Greene King

**Beers:** Greene King IPA, Abbot + regular guest

**Food:** Served noon until 10

Recently refurbished, this is a large pub with an 'L' shaped bar, popular with staff from nearby Mount Pleasant Sorting Office. Meals are available from 12 to 10pm on weekdays. The pub windows are decorated with small Apple tree motifs. There is a large screen television that is generally used when football matches are on. In addition, there are pool tables and a dartboard available in the large upstairs room. Outside seating is available in a reasonably sized pavement patio area.

## Bedford Hotel (Café London)

83 Southampton Row, WC1B 4HB

Tel: 020 7636 7822

**Open:** 11-11 Monday - Saturday, 12-10.30 Sunday

**Pub ownership:** International Hotels London

**Beers:** Fuller's London Pride, Greene King Abbot

**Food:** All day

Modern café bar, bright and clean, used by hotel guests and local office workers alike.

## Blue Lion

133 Gray's Inn Road, WC1X 8TZ

Tel: 020 7405 4422

**Open:** 12 - 1am (sic) Monday to Friday, closed weekends

**Pub ownership:** Greene King

**Beers:** Greene King IPA, Abbot, Old Speckled Hen

**Food:** 12-2.30 every day and 5.30-8.00 Monday to Thursday.

An impressive exterior, adorned by a large blue lion, reveals behind what is essentially a one-roomed pub. However, the central bar helps disguise this particular characteristic with the result that there are several compartmentalised areas, together with a pool table at the rear. Note the late license. Food is served 12-2.30 every day and 5.30-8.00 Monday to Thursday.

## Bonnington Hotel (Malt Bar)

92 Southampton Row, WC1B 4BB

Tel: 020 7242 2828

**Open:** 11-11 Monday -Saturday, 12-10.30 Sunday

**Beers:** Tetley Bitter

**Food:** All day

**Website:** [www.bonnington.com](http://www.bonnington.com)

Modern bar, part of hotel building, busy with tourists. 'Happy hour' evenings 5 - 6.30 pm. Food available all day.

## Bull & Mouth

31 Bloomsbury Way, WC1A 2SA

Tel: 020 7405 2342

**Open:** 11-11 Monday to Saturday, 12-10.30 Sunday

**Pub Ownership:** Scottish Courage (T&J Bernard)

**Beers:** Courage Directors, Fuller's London Pride, Young's Bitter or Special + guests

**Food:** Daily until 9.30 pm (Sunday 9pm)

Called the Falkland Arms between 1982 and 1998, the pub reverted to its original name, which derives from the Battle of Boulogne Mouth in 1544. The first house of this name was in Aldgate East, represented by a bull and large mouth – today's pub sign returns to this tradition. Pretty thoroughly modernised inside with a mixture of floorings (carpet, wood and flagstone) and raised, separated drinking areas that serve to break up the one-room. The walls variously brickwork and plaster. The bar front is full of dummy drawers. Food served until 9.30, except Sunday (roasts) when it's 9.00. Upstairs function room.

## Bung Hole Cellars

Hand Court, 57 High Holborn, WC1V 6DT

Tel: 020 7831 8365

**Open: Monday to Friday 8.30 am to 11.00 pm. Closed weekends.**

**Pub Ownership: Davy's Wine Bars**

**Beers: Davy's Old Wallow**

**Food: Until 8.30 pm**

Part of the Davy's chain of wine bar / restaurants, selling what is believed to be Courage Directors. Opening for breakfast, lunches and dinner (last orders 8.30pm) it offers a full service menu either in the bar area or restaurant. Cask beer is only sold downstairs. The chain operates to a formula that mixes a Dickensian style décor with sawdust on the floor and candlelit nooks and crannies. If you view it as a restaurant selling real ale, you won't be disappointed. The beer is expensive. Available for private hire at the weekend.

## Calthorpe Arms

252 Gray's Inn Road, WC1X 8JR

Tel: 020 7278 4732

**Open: 11-11; 12-10.30 Sunday**

**Pub Ownership: Young's**

**Beers: Young's Bitter, Special + seasonal beer**

**Food: See below**

On the corner of Gray's Inn Road and Wren Street, this is a comfortable single-bar pub popular with locals and office workers alike. Once used as a temporary magistrates' court after the first recorded murder of a policeman on duty in 1830. Young's bought the pub in 1984. The upstairs dining room is open at lunchtimes; evening meals are also available between 6-9.30pm Monday to Friday. The upstairs room can also be booked for meetings and functions. No music. Outside seating is available in a pavement patio area. Local CAMRA Pub of the Year 2001.

## Carpenters Arms

105 King's Cross Road, WC1X 9LR Tel: 020 7278 0120

**Open: 11-11 Monday - Friday, 11-12 Sat, 12-10.30 Sunday**

**Pub Ownership: Punch Taverns**

**Beers: Tetley Bitter + a guest (often O'Hanlon's Blakeley's)**

**Food: Sunday's only (see below)**

This community local has a busy calendar of events. Monday is quiz night (entry fee goes to local charities). Tuesday women's' darts, men on Thursday. Live music in all styles is played Saturday evenings from 9.30. Food (traditional roasts at £5.50) is only served on Sunday from 12-8. The interior décor of mirrors and tiles pre-dates the pub, being the dairy that occupied the site. The exterior walls are glass doors that open in summer, when pavement seating is also provided.

## Cittie of Yorke

22 High Holborn, WC1V 6BS

Tel: 020 7242 7670

**Open: 11.30 (12 Saturday) – 11, Closed Sunday**

**Pub Ownership: Samuel Smith**

**Beers: Samuel Smith OBB**

**Food: Daily 12 – 9pm**

A pub has stood on this site since 1430 and was once known as Gray's Inn Coffee House, being next to the Inn's gatehouse. The cellar bar (open 12-2.30 and from 5.00 / 6.00) is the old cellar of the original coffee house. The front bar has wooden panelled walls, with ample seating. The real splendour lies in the back room, with its vaulted ceiling, long bar, handsome screenwork, compartments for private drinking and massive mounted vats. A fire with a unique flue warms the bar in winter. Food is sold between 12-9 all days. The various rooms of the pub are available for private hire.

## College Arms

18 Store Street, WC1E 6DH

Tel: 020 7436 4697

**Open: 11-11 Monday - Friday, 12-11 Saturday, closed Sunday**

**Pub Ownership: Brokenfoot Inns Ltd**

**Beers: Adnams Bitter, Fuller's London Pride, Greene King Abbot**

**Food: Lunchtimes and evenings, Monday to Friday**

**Email: collegearmswc1@aol.com**

A single bar pub (formerly the University Tavern), with a downstairs seating area. A good mixture of local office workers and students, walls feature many pictures reflecting history of the local area. Food lunchtimes and evenings.

## Dolphin

47 Tonbridge Street, WC1H 9DW

Tel: 020 7692 7116

**Open:** 11-11 Monday - Saturday, 12-10 30 Sunday

**Pub Ownership:** Unique

**Beers:** Fuller's London Pride, Greene King Old Speckled Hen, Shepherd Neame Spitfire, Webster's Bitter

**Food:** See text

This traditional two bar pub retains the public & lounge bars. This is a relatively modern building for the area, with high ceilings and decorated in sitting-room traditional style. There is a strong Irish theme to the artefacts and pictures. The lounge has a coal-effect gas fire, central pillar with bar stools and a shelf for glasses. The public bar has a pool table. The pub has some fine mirrors and pictures, and a china display cabinet.

The pub has a rotating range of real ales with four handpumps, and usually 3 or 4 ales on at any time. Occasional race nights are held here. Thai food with a varied menu is available noon to 9 pm, Monday to Friday.

## Dolphin Tavern

44 Red Lion Street, WC1R 4PF

Tel: 020 7831 6298

**Open:** 11-11, 12-4 Saturday, 12-3 & 7.30-10.30 Sunday

**Pub Ownership:** Enterprise Inns

**Beers:** Brakspear's Bitter, Fuller's London Pride, Shepherd Neame Spitfire + occasional guest beers

**Food:** Lunchtimes, 12 - 2, Monday to Friday only

A small pub for the area with a wooden bar and seating in "compartments" down one side of the pub and bar stools down another. This coupled with the paraphernalia around the walls gives a cosy feel. It is famous for its stopped clock (a German zeppelin dropped a bomb on the pub in 1915 killing 3 men and stopping the clock). The food is traditional and homemade but is served only at lunchtime, Monday to Friday, 12-2pm. Phone in advance to check weekend opening, as this can be seasonal.

## Duke of York

7 Roger Street, WC1N 2PB

Tel: 020 7242 7230

**Open:** 12-11; 6-11 Saturday; Closed Sunday

**Pub Ownership:** Punch Taverns

**Beers:** Ind Coope Burton Ale

**Food:** Yes - see below

The John's Mews entrance leads into a small wood-panelled lounge, used primarily as a dining area, whilst the corner entrance leads you into a larger bar decorated with artwork, which is available for purchase. This is a busy pub with a mixed to younger age group clientele. Full meals are available 12-3, 6-10 weekdays, and 6-10 Sat. The menu changes weekly.

## Enterprise

38 Red Lion Street, WC1R 4PN

Tel: 0207 269 5901

**Open:** 12-11 Monday to Friday, closed weekends

**Pub Ownership:** Six Continents (formerly Bass)

**Beers:** Draught Bass, Fuller's London Pride

**Food:** Daily, 12pm - 3pm

A large, extended one-roomed pub but one in which you can still distinguish the previous layout and indeed still retains some very interesting features. The bay window is a characterful start. The front half of the pub has some fantastic tiles and mirrors and is, in part, still illuminated by gas lighting. There's a full food menu between 12-3. Red Lion Street has a large number of restaurants for an evening meal and round the corner in Theobalds Road is The Fryer's Delight, a fine eat-in chippy.

## Friend At Hand

4 Herbrand Street, WC1N 1HX

Tel: 020 7837 5524

**Open:** 11-11 Monday-Saturday, 12-10.30 Sunday

**Pub Ownership:** Scottish Courage

**Beers:** Courage Best, Directors

**Food:** Daily until 9pm

One-bar corner pub behind Russell Square tube station, although it was originally at least two bars. At one time, the area was used for stabling and opposite the pub is the horse hospital, now an art venue with occasional gigs, with an original floor complete with troughs for the horses 'urine to run away'. Sky sports. Food available until 9.00 pm.

## **Goose**

31 Marchmont Street, WC1N 1AP

Tel: 020 7923 5961

**Open: 11-11 Monday -Saturday, 12-10.30 Sunday**

**Pub Ownership: Six Continents (formerly Bass)**

**Beers: Draught Bass, Fuller's London Pride, Tettley Bitter + one guest**

**Food: Daily until 9pm**

Previously the Marquis of Cornwallis, this pub has one open plan bar with a modern look interior, complete with several settees. Food served until 9.00pm.

## **Ivy House**

8-10 Southampton Row, WC1B 1AE

Tel: 020 7831 6999

**Open: 12 – 11.00 (6.00 Saturday), closed Sunday**

**Pub Ownership: Pubs and Bars plc**

**Beers: A changing selection of 'guest beers'**

**Food: Noon to 3.30 pm**

The beer range changes fairly regularly and can feature unusual beers from regional or local breweries. This is yet another bank that has been converted into a pub, the exterior is Grade II listed. It seems to retain some of the original internal features such as the cornices but the effect is somewhat confused by more recent fittings. There is a large U shaped bar with subdued lighting, dark wood, mirrors and on one side a comfortable seating area has been created, raised up from the main level. Food is served lunchtimes noon to 3.30.

## **Jeremy Bentham**

31 University Street, WC1E 6JL

Tel: 020 7387 2033

**Open: 11-11 Monday - Saturday, 12-10.30 Sunday**

**Pub Ownership: Scottish Courage**

**Beers: Courage Directors, Fuller's London Pride, Theakston Best Bitter**

**Food: Served all day**

Previously known as The Lord Wellington, always very busy with students and academics from the local university and hospital. Devoted landlady committed to her customers, warm and welcoming.

## **Kings Arms**

11a Northington Street, WC1N 2JF

Tel: 020 7405 9107

**Open: 11-11; closed weekends**

**Pub Ownership: Punch Taverns**

**Beers: Draught Bass, Greene King IPA; + regular guest beer**

**Food: Lunchtimes**

Friendly and quiet single bar, near Gray's Inn Road, that retains a number of the better features from its days under Charringtons. There has been a pub on this site from at least 1756, originally backing onto the stables of a local brewery. Upstairs there are two meeting rooms; the larger holds up to 50, the smaller is non-smoking and holds about 20. Meals are available lunchtimes. There is a small pavement patio area outside where seating is provided in summer. North London CAMRA *Pub of the Season* Spring 2003.

## **Lamb**

94 Lamb's Conduit Street, WC1N 3LZ

Tel: 020 7405 0713

**Open: 11-11 Monday - Saturday; 12-4 & 7-10.30 Sunday**

**Pub Ownership: Young's**

**Beers: Young's Bitter, Triple A, Special + seasonal beer**

**Food: daily Sunday to Friday**

Very friendly cosmopolitan pub. Attractive Grade II listed building with green upholstery, original Victorian snob screens, and a snug to suit non-smokers. The pub also boasts a working music hall 'polyphon' which can be played in aid of charity. The upstairs dining room serves excellent food except Saturday and Sunday PM. Seating available in the garden, and occasionally on a small pavement patio area at the front of the pub.

London Drinker Beer and Cider Festival  
*Camden Centre, Bidborough Street, WC1*

**Open:** mid to late March each year. 12-3; 5-10.30 Wed & Thu; 12-10.30 Fri. Closed all other times  
**Pub ownership:** n/a – CAMRA festival event  
**Beers:** 50+ UK real ales; imported beer predominantly from Europe. Around 10 ciders & perries  
**Food:** 12-3 and 5-10pm each day during Festival. Snacks & main meals  
**Website:** [www.camranorthlondon.org.uk](http://www.camranorthlondon.org.uk)  
**Email:** [ccryne@supanet.com](mailto:ccryne@supanet.com)

This annual event offers, for three days, the best selection of real ales, ciders, perries and imported beers in WC1. The event is organised by the North London Branch of CAMRA who also produce the home made full and light meals that are on sale both lunchtimes and evenings. This includes both a vegetarian and non-vegetarian daily special.

On Wednesday evening there is a breweriana auction and live music on Friday evenings. Otherwise the event is quiet except for the calls of "Everyone's a winner" from the Tombola stand. In the evenings, the balcony is opened up to provide additional seating. Commemorative glasses and tee shirts are on sale along with a selection of brewery items, souvenirs and books on beer and pubs. Entry is free on Wednesday and Thursday lunchtimes but there is an entrance fee at other times with reductions for CAMRA members. Under 18s are not permitted entry.

**Lord John Russell**

*19 Marchmont Street, WC1N 8AE      Tel: 020 7388 0500*

**Open:** 11-11 Monday -Saturday, 12-10.30 Sunday  
**Pub Ownership:** David Sculley (Lendlord)  
**Beers:** Adnams Bitter, Courage Directors, John Smith's Bitter, Marston's Pedigree, Wells Bombardier  
**Food:** Monday to Friday lunchtimes

This is a small, friendly single bar pub, clearly converted from a two-bar layout with an outside drinking area in an archway, popular with locals and students. The ceiling is high and is supported on four iron pillars. There are large windows to the street and it is tastefully decorated in green. The range of foreign beers has recently been extended and includes: Leffe, Amstel, Budweiser Budvar and also fruit and Abbey beers from Belgium. Food is served Mon to Fri lunchtimes. The TV shows terrestrial broadcasts of football matches and other sporting events.

**Lucas Arms**

*245a Gray's Inn Road, WC1X 8QZ      Tel: 020 7837 4340*

**Open:** 12-11 Monday - Saturday, 12-10.30 Sunday  
**Pub Ownership:** Greene King  
**Beers:** Greene King IPA, Abbot, Old Speckled Hen, occasional guest  
**Food:** See below

There are two distinct areas to this pub, at the front is a small, comfortable, traditionally decorated and carpeted saloon. To the rear is a larger, raised area that has several chesterfields, wooden floors, a pool table, a CD juke box and TV. A patio garden with several picnic tables can be accessed from this room. Food from the traditional pub menu is served Mon-Sat 12-9 and Sun 12-4 and 6-9.

**Mabel's Tavern**

*9 Mabledon Place, WC1H 9AZ      Tel: 020 7387 7739*

**Open:** 11-11 Monday -Saturday, 12-10 30 Sunday  
**Pub Ownership:** Shepherd Neame  
**Beers:** Shepherd Neame Best Bitter, Bishop's Finger, Spitfire and seasonal beers  
**Food:** Yes – see below  
**Website:** [www.shepherdneame.co.uk](http://www.shepherdneame.co.uk)

This pleasantly decorated pub is carpeted with raised seating areas at both ends of the pub. It has a quiet atmosphere with background music, a coal effect gas fire with a mirror above and an interesting selection of pictures on the walls. The pub is popular with office workers lunchtimes, while at evenings/weekends the character changes, when the pub becomes frequented by tourists. In an area where many pubs close during holiday periods, the pub is open every day of the year except Christmas day. Quiz night on Monday evenings. A good selection of food at reasonable prices is served 12 -10 Monday to Thursdays, 12-9 Friday to Sunday.

## **Marlborough Arms**

36 Torrington Place, WC1E 7LY

Tel: 020 7636 0120

**Open: 11-11 Monday - Saturday, 12-10.30 Sunday**

**Pub Ownership: Scottish Courage**

**Beers: Courage Best & Directors, Wells Bombardier**

**Food: All day**

Large single bar pub with oak panels throughout. Military pictures adorn the walls. Warm and welcoming, popular with local students. Pool table in adjacent room.

## **McGlynn's**

5 Whidbourne Street, WC1H 8ET

Tel: 020 7837 1904

**Open: 11-11 Monday - Saturday, 12-10.30 Sunday**

**Pub Ownership: Laurence Malins – privately owned but tied to Courage**

**Beers: Courage Best**

**Food: See below**

Formerly McCarvey's, before that the Duke of Wellington, this single bar pub is hidden up a back street but worth the trip. It is popular with locals and has a food serving and eating area through an archway. There is a pleasant outside drinking area on the pavement, west facing and sheltered in a very quiet street. Background music is played and there is a juke box. Major sporting occasions are covered by Sky sports. Around 4 race evenings are held per year. Food is available 11 to 2.30 and 5.30 to 9 Monday to Friday, Sunday lunch 12 to 4.

## **Museum Tavern**

49 Great Russell Street, WC1B 3BA Tel: 020 7242 8987

**Open: 11-11 Monday – Saturday; 12-10.30 Sunday**

**Pub Ownership: Scottish Courage (T J Bernard)**

**Beers: Courage Directors, Fuller's London Pride, Theakston Best, Old Peculier + 2 guest beers**

**Food: Yes – see below**

Originally called the Dog & Duck, this pub been trading since the early eighteenth century, making it one of the oldest in Bloomsbury. It changed its name to reflect the British Museum, which was established opposite the pub in 1759. The mahogany bar runs along the left of the pub; to the right there are large windows, framed by curtains. Dominating the end of the pub is a display of glass and pottery on what looks a bit like a Welsh dresser. Some etched windows, mirrors and stained glass remain as a reminder of past times. There is history of the pub on sale, which is worth a read. Food is sold 11-10 Mon-Sat and 12-10 Sun. In summer, there is pavement seating outside.

## **Norfolk Arms**

28 Leigh Street, WC1H 9EP

Tel: 020 7388 3937

**Open: 11-11 Monday - Saturday, 12-10.30 Sunday**

**Pub Ownership: Scottish Courage**

**Beers: Courage Directors**

**Food: Yes – see below**

Single bar, street corner local in the shadow of large council blocks and London university student accommodation, being popular with the occupants of the latter. There is a high ceiling supported by three columns and magnificent windows to the streets with original etched glass. There is a friendly atmosphere with two TVs and background music playing. There are a number of tables forming an outside drinking area in front of the pub. Food is served Mon to Sat 11 until 9, Sun 12 – 9.30.

## **Old Crown**

33 New Oxford Street, WC1A 1BA

Tel: 020 7836 9121

**Open: 12-11 Monday to Saturday, closed Sunday**

**Pub Ownership: London Best Bars**

**Beers: Adnams Broadside, Draught Bass**

**Food: Yes – see below**

**Website: [www.old-crown.co.uk](http://www.old-crown.co.uk)**

Not much "old" remains about this pub, its now very modern in a café bar style, majoring on Staropramen and shots. A pleasant surprise then that two cask beers have survived. Massive plain windows light the pub up from the outside, an effect magnified by the mirror balls (honestly it's not a disco) and the large mirrors throughout. On one side there are full-length doors that can be opened in summer. The décor is completed by marble effect table tops and massive lights in the shape of crowns. Food is served 12-3 and 5.30-9.30. Upstairs there are two more rooms, one's a restaurant at lunchtimes, the other is more intimate with a bar, bench seats and sofa.

## Old Monk

39 – 41 Gray's Inn Road, WC1 8XP Tel: 020 7242 9094

**Open:** 11-11, closed weekends

**Pub Ownership:** Puzzle Bars

**Beers:** Courage Best, Directors + regular one guest

**Food:** Noon until 9pm

Having been sold by the Old Monk Pub Co, the direction this pub will take is not yet clear, real ale should survive but the range may well change, as even might the pub's name. It's a two bar pub, lots of wood panelling, mainly standing with stools at the front, booths and seating area at the back. The large picture windows can open in summer.

## Old Red Lion

72 High Holborn, WC1V 6LS

Tel: 020 7405 2892

**Open:** 11-11 Monday to Friday, 11-9 Sat, closed Sunday

**Pub Ownership:** Greene King

**Beers:** Greene King IPA, Abbot + brewery brewed 'guest'

**Food:** Monday to Friday, 12-3pm

Bearing little apparent structural relationship to the buildings beside it, this is a pub of some character, made so by the décor and the thin nature of the main downstairs bar, where if you can't grab a bar stool, it's very much stand up drinking propping up either the bar or the ledges around the outside. An upstairs room (with bar at lunchtimes) provides seating and can be booked for functions. Food served 12-3 Mon to Fri. Plenty of restaurants in Red Lion Street and High Holborn for evening eating.

## Overdraughts

6 Dane Street, WC1R 4BL

Tel: 020 7405 6087

**Open:** 11-11, closed weekends

**Pub Ownership:** For sale at time of going to press

**Beers:** Courage Best, Charles Wells Bombardier

**Food:** See below

A popular, small one-bar pub that was up for sale at the time of surveying for this Guide. The sale may very well result in a change of beers. Indeed anything might change. There is a downstairs room which also has a bar but which is mostly used for functions. Food was being served 12-3 and 5-8.

## Pakenham Arms

1 Pakenham Street, WC1X 0LA

Tel: 020 7837 6933

**Open:** Monday to Sunday 9 am -1.30 am (sic)

**Pub Ownership:** Free house –family-owned

**Beers:** An ever-changing range of beers, up to 5 at any time

**Food:** See below

A large and spacious pub with a centre bar, which is popular with locals, office staff, and postal workers from nearby Mount Pleasant Sorting Office. Up to five beers are available from a varying range that includes Adnams, Fuller's and Harvey's. Popular for watching football, it can get crowded, especially at weekends. Breakfasts are served from 9-12, and the full menu from 12-3; 6-10. There is seating available in a pavement patio area for when the weather is fine

## Penderel's Oak

283-288 High Holborn, WC1V 7HJ

Tel: 020 7242 5669

**Open:** 11-11, 12-10.30 Sunday

**Pub Ownership:** J D Wetherspoon

**Beers:** Courage Directors, Fuller's London Pride, Greene King Abbot, Shepherd Neame Spitfire + guests

**Food:** Daily – see below

Often featuring more than 4 guest beers, this is a huge Wetherspoon's conversion. The larger ground floor bar, is well designed providing clearly defined drinking areas with a no smoking area at the back. Unusually the downstairs bar can feature large screen TVs for sport and music. Legend has it that a man with local associations, Richard Penderel, and his oak tree, gave shelter to King Charles I in his flight from Parliamentary forces. Food served 10-10, 12-9.30 Sunday. Children can eat at the rear of the pub, last order 5pm.

## **Perseverance**

63 Lambs Conduit Street, WC1N 3NB

Tel: 020 7405 8278

**Open: 12.30-11.30; 12.30-10.30 Sunday**

**Pub Ownership: B D London**

**Beers: Courage Directors**

**Food: Yes – see below**

More of a food/wine bar establishment, this was once the legendary Sun. Now sadly reduced to the one cask ale. A predominately young clientele, the pub can get crowded most nights. There is an upstairs dining/function room. Food is available 12.30-3; 7-10. No food Sat lunchtime or Sun evening.

## **Plough**

27 Museum Street, WC1A 1LH

Tel: 020 7636 7964

**Open: 11-11 Monday to Saturday, 12-10.30 Sunday**

**Pub Ownership: Spirit Group**

**Beers: Adnams Bitter and Broadside, Draught Bass, Marston's Pedigree plus guests**

**Food: Yes – see below**

In the heart of Bloomsbury this is a bustling, busy pub with a good feel to it. There are etched windows, wood panelling and two distinct bar areas, even though it's really just one large room. The intention is to have 3 regular beers with two guests, so the above range may well have changed by the time this Guide is printed. Food is served 12-7 Monday to Saturday and 12-5 on Sunday. Upstairs bar/function room.

## **Princess Louise**

208/9 High Holborn, WC1V 7BW

Tel: 020 7405 8816

**Open: 11.00 (12.00 Saturday) – 11.00, 12.00 – 10.30 Sunday**

**Pub Ownership: Samuel Smith**

**Beers: Samuel Smith OBB**

**Food: Yes - see below**

A splendidly preserved pub displaying some of the finest examples of the Victorian art of public house building. Built in 1872 the interior includes marble, etched windows, enormous engraved and gilt mirrors, Portland stone columns, an ornate crimson and gold ceiling and a huge central island bar. The gents loos are worth a visit for more than the usual reason. Large function room upstairs available for hire. There is a fairly standard range of hot and cold food with a *Life Bites* menu served six days a week from noon to 3.00 and 6.00 to 8.30, on Sunday snacks and sandwiches only. Beer is especially good value for the area.

## **Queen's Head**

64 Theobalds Road, WC1X 8SF

Tel: 020 7831 3231

**Open: 12-11 Monday to Friday, closed weekends**

**Pub Ownership: Six Continents (formerly Bass)**

**Beers: Adnams Bitter, Fuller's London Pride**

**Food: 12 – 3 pm**

A large single roomed pub, it has a series of double doors onto the street, which open in warm weather. As you enter the pub, you are met by large circular tables surrounded by bar stools, as you move further in, it adopts a more standard table and chairs approach and when you get to the rear, there's a pool table. Food served 12 – 3 but by the time this Guide comes out, might also be evenings.

## **Queen's Head**

66 Acton Street, WC1X 9NB

Tel: 020 7713 5772

**Open: 12-11 Monday - Friday, 2-10.30 Saturday & Sunday**

**Pub Ownership: Punch Taverns**

**Beers: Greene King IPA, Hancock's HB, Tetley Bitter**

**Food: yes – see below**

The promise of the façade, with its enticing etched glass windows and tiles is fulfilled by this pub's interior, where entire walls are covered with ceramic tiles and mirrors. This is a traditional local, with a pool table and dart board, juke box and TV. Food consists of main meals Monday - Friday 12-3 and baguettes and baked potatoes, Monday - Thursday 7-9 pm.

### **Queen's Larder**

1 Queen Square, WC1 3AA

Tel: 020 7837 5627

**Open: 11-11; 12-11 Saturday; 12-10.30 Sunday**

**Pub Ownership: Laurel Pub Co**

**Beers: Marston's Pedigree; Fuller's London Pride; Draught Bass; Boddingtons Bitter**

**Food: Yes – see below**

Small friendly, attractively wood panelled, one bar pub, first mentioned in 1710. Despite its size, the pub originally had two bars. It takes its name from Queen Charlotte, the wife of 'Mad King' George III, who received treatment for his "insanity" at a doctor's house in the square. The Queen assisted in nursing her husband and rented a small cellar beneath the pub, where she kept "special" foods for him. Upstairs dining room is non-smoking. Food is served from 12-8; 12-3 Saturday & Sunday

### **Royal National Hotel (London Pub)**

Bedford Way, WC1H 0DG

Tel: 020 7692 3619

**Open: 11-11 Monday - Saturday, 12-10.30 Sunday**

**Pub Ownership: Imperial London Hotels**

**Beers: Adnams Bitter, Greene King Abbot**

**Food: See below**

Part of the main hotel building, a large single bar, popular with hotel guests and local office workers. Pictures of old London cover the walls. Basic food menu all day.

### **Rugby Tavern**

19 Great James Street, WC1N 3ES

Tel: 020 7405 1384

**Open: 11-11; 12-6 Saturday**

**Pub Ownership: Shepherd Neame**

**Beers: Shepherd Neame Master Brew, Spitfire + seasonal beers**

**Food: Daily – see below**

**Website: [www.shepherdneame.co.uk](http://www.shepherdneame.co.uk)**

Formerly a Nicholson's, then a Fuller's house, this large island bar pub is popular with locals and office workers. The pub can get crowded in the early evening. Food is available 12-2.30 and 5.30-9.30, and the upstairs room can be booked for parties and functions. There is a large seating area available outside, which is extremely pleasant during the summer months.

### **Skinner's Arms**

114 Judd Street, WC1H 9NT

Tel: 020 7837 5621

**Open: 11-11 Monday -Saturday, 12-10 30 Sunday**

**Pub Ownership: Chris Hunter**

**Beers: Greene King IPA, Abbot**

**Food: Yes – see text**

Traditional medium-sized pub converted to one bar, despite the signs on the doors and in the stained glass, of which there is quite a lot in the windows. There is a raised seating area, and a separate room at the back has been converted to a large alcove with more seating. The décor is traditional, and there is a quiet ambience. Having just been purchased from Greene King, the new management may introduce a wider range of ales. Convenient for King's Cross and St Pancras stations, it is popular with commuters and being close to the venue for the London Drinker Beer Festival is frequented by staff and visitors during the festival. A wide range of snacks and meals is served.

### **Smithy's**

15-17 Leeke Street, WC1X 9HZ

Tel: 020 7278 5949

**Open: 12-11 pm Monday to Friday, closed weekends**

**Pub Ownership: The Capital Pub Company plc**

**Beers: Fuller's London Pride**

**Food: Daily**

**Website: [www.capitalpubcompany.com](http://www.capitalpubcompany.com)**

This unusual bar is hidden in a maze of narrow (and eerily quiet) streets between the top of Gray's Inn Road., and King's Cross Road. From King's Cross station, St Chad's Place is first left off Gray's Inn Road, then first right and second left brings you to Leeke Street. It occupies a long, low brick built building originally constructed as stabling for horses that pulled London trams. The interior is pleasantly intimate with bare walls and low lighting. The larger room beyond the bar has been smartened considerably. Food is served 12 - 2.30 pm and 6 - 9.30 pm and ranges from snacks to a full menu. Extensive wine list covers the wall on blackboards. There is a good range of malts and Hoegaarden on tap. Can be privately hired at weekends.

## **SOAS Students' Union Bar**

*Thornhaugh Street, WC1N 0XG*

*Tel: 020 7898 4930*

**Open: 11-8.30 (11 Thursday) Monday - Friday. Closed weekends**

**Pub Ownership: SOAS Student Union**

**Beers: Theakston Best Bitter**

**Food: No**

**Website: [www.soas.ac.uk](http://www.soas.ac.uk)**

Located on the *School of African and Oriental Studies* campus and a bit difficult to find this is a downstairs student union bar, busy and lively with music provided by an ancient juke box playing 7" singles. Walls plastered with student advertising, interesting smoky atmosphere.

## **Square Pig**

*30 – 32 Procter Street, WC1R 4QG*

*Tel: 020 7691 3144*

**Open: 12 – 11 Monday to Friday, closed weekends**

**Pub Ownership: The Capital Pub Company plc**

**Beers: Fuller's London Pride plus a Fuller's seasonal plus one other beer**

**Food: Yes – see text**

**Website: [www.capitalpubcompany.com](http://www.capitalpubcompany.com)**

A big corner pub with a mix of red leather armchairs, settees and benches. The large windows and light wood give the pub an airy feel. There are televisions in the corners and the music can be loud in the evenings. The outside seating area with heaters provides a pleasant retreat in warmer weather. Food is available lunchtime and evenings and includes a good range of vegetarian options as well as fish and meat dishes.

## **Swan**

*7 Cosmo Place, WC1N 3AP*

*Tel: 020 7837 6223*

**Open: 11-11; 12-10.30 Sunday**

**Pub Ownership: Scottish Courage (T & J Bernard)**

**Beers: Theakston Best Bitter, Old Peculier; Courage Directors; Guest Beers**

**Food: Daily**

This is a pleasant single bar pub in a busy hotel and restaurant area, frequented by a predominately younger clientele. Part of the TJ Bernard ale house chain, with the standard range of beers, plus two guests. Food is available at all times. Some outside seating is available in a small pavement patio area.

## **Truckles**

*Pied Bull Yard, off Bury Place, WC1A 2JR*

*Tel: 020 7404 5338*

**Open: 11-10 Monday to Friday**

**Pub Ownership: Davy's Wine Bars**

**Beers: Davy's "Old Wallop"**

**Food: meals and snacks – see below**

Real ale (believed to be Directors) is sold in the downstairs bar where the Davy's formula of sawdust and candles prevails. Beer sold in pewter pots and although cheaper by the four pint jug, it still remains expensive. The ground floor bar has a more modern feel but does not sell cask beer. In good weather, there's seating in the outside courtyard, well away from noise and traffic. Available for private hire at weekends. Offers a traditional grill menu in a restaurant setting from 12-2.30 and 5-9, in the afternoon a snack service is available.

## **Union Tavern**

*52 Lloyd Baker Street, WC1X 9AA*

*Tel: 020 7278 0111*

**Open: 11-11 Monday -Saturday, 12-10.30 Sunday**

**Pub Ownership: Richard Morgan**

**Beers: Courage Directors, Fuller's London Pride, Greene King IPA**

**Food: Yes – see text**

**Email: [uniontavern@yahoo.com](mailto:uniontavern@yahoo.com)**

This pub retains its two-room layout with some remains of the original drinking lobby. The many engraved mirrors, bare wood floors and furniture complement the dark wood of the bar counter and internal screens. One room is used as a restaurant. Food served Mon-Sat 12-3 and 6-10, Sun 6-9.30. The imaginative menu is chalked up on blackboards. Food can also be ordered and eaten in the bar. One wall displays an extensive wine list, all available by bottle or glass and some interesting cask strength whiskies can be found. There is piped music and a larger retractable TV screen. Upstairs is a function room with its own bar for hire.

## **Water Rats**

328 Gray's Inn Road, WC1X 8BZ

Tel: 020 7436 7211

**Open: 8am-11 Monday -Friday, 8pm-11 Sat, closed Sunday**

**Pub Ownership: The Water Rats Charity**

**Beers: Fuller's London Pride**

**Food: 12 – 3 pm Monday to Friday**

The front room of this two-room pub houses the main bar, and with its tatty furniture, bare boards and poster gig guides has a stripped down feel. Hoegaarden and Leffe Blond are on tap with bottled beers. Food is served 12-3 Mon-Fri only, with a menu of daily specials, mains and sandwiches on blackboards. Loudish piped music and TV for those with short attention spans. The back room has its own bar and a theatre which hosts indie/metal/rock bands most evenings. Sat there are DJ nights until 2am. Theatre available for private hire. No children.

## **Yorkshire Grey**

2 Theobald's Road, WC1X 8PN

Tel: 020 7405 2519

**Open: 11 – 11 Monday to Friday, 1 – 11 Sat, closed Sunday**

**Pub Ownership: Enterprise Inns**

**Beers: Fuller's London Pride, Shepherd Neame Spitfire, Wadworth 6X plus + one other guest ale**

**Food: Lunchtimes**

Once the home of a micro-brewery, the kit could still be seen by looking down through viewing areas located on the raised area at the back of the pub. Sadly brewing is no longer carried out but, after a period of uncertain ownership, the pub finally seems to have turned the right corner. It's a large, imposing one-room pub, dominating the street corner and carefully split into different drinking areas. Upstairs is a large bar/meeting room. Food is served at lunchtimes, 12 to 2.30. There are restaurants in Gray's Inn Road for evening meals.



- Check out our website to keep abreast of all Branch activities, including social events: [www.camranorthlondon.org.uk](http://www.camranorthlondon.org.uk)
- We publish a bi-monthly newsletter *The Full Pint*, which is distributed free to many of the WC1 pubs listed in this Guide. This covers a wide range of material relevant to Branch activities, including national campaigning but with a focus on local issues, including pub preservation.



# The Full Pint

Issue No. 19 Established during the last century

## FREE

Feb / March 2003

Circulation 3500 Published by the North London Branch of the '*Campaign for Real Ale*'

### London Drinker Beer & Cider Festival, March 2003



**W**ell folks it's the time of year to come and enjoy around fifty real ales, numerous imported beers and ciders and perries, for CAMRA's London Drinker Beer & Cider Festival is taking place in March.

**The beers etc**

Perhaps this festival can probably be described as a fruity beer and birthday bash. To start with, Pitfield, North London's very own brewery is celebrating 21 years of brewing in 2003. The Festival will be selling their very special birthday beer on draught along with their organic Eco Warrior and an exclusively extra dried hopped version of Hoxton Best Bitter, which will be the Festival's special beer. Charles Wells' Banana Beer will also be available. It is a dark golden beer with banana notes on the aroma and on the palate. But not as sweet as you would expect from the name, where "bread" refers to the Saxon name for beer: "liquid bread". This was

the 2002 Best Beer of the Festival, so see if you agree.

One other fruity British beer will be Fuller's Honey Dew with Cranberries. This beer usually appears in a bottled form that is not bottled conditioned but at this year's Festival it will be in a real ale form on draught. For those of you who find the usual Honey Dew a little sweet, give this a try. The sharpness of the cranberries balances the sweetness beautifully.

And of course, more fruity beers can be found on the imported Beer Bar in the side hall. Traditionally from Belgium, these include Kriels (made with cherries) and Framboise (raspberries). But there are not the only unusual flavours on sale; try the smoked beer from Bavaria.

But the oldest form of fruity alcoholic drinks can be found on the cider and perry bar (like cider but made from pears). Cider has been drunk in Britain long before the Romans and the traditional form is very difficult to find in London. So if you haven't tried it, why not give it a go this year but beware many ciders are around 8% ABV (alcohol by volume) so a half may be a good start for the uninitiated!

**Other delights**

As usual the Festival food is made by the local

branch volunteers. As well as the usual O'Hagan's sausage, onion bhajis and enormous cheese baps there are two daily specials one of which is vegetarian. The chefs promise at least one spicy dish this year.

Although the side hall is seated, in the evenings the balcony is opened to provide additional seating and for people to watch the world go by. But if you want to have a bit of active fun, there is the Tombola where "Every 1's a winner" or have a go at the Shut the Box. A traditional game played by sailors and win a tee shirt.

On Wednesday evening there is the usual breweriana auction. If you can't get along for then, the Products stand has a range of brewery goods from jugs to tee shirts as well as the Festival commemorative tee shirt and books on beer and breweries including the 2003 Good Beer Guide and lots of special offers. But if jazz is more your scene, then on Friday night Jazzy Trousers are back by special request.

The Festival is open 19<sup>th</sup> - 21<sup>st</sup> March; full details of the opening times can be found on the advert at the back of this edition of Full Pint.

[www.camranorthlondon.org.uk](http://www.camranorthlondon.org.uk)

### In this issue

Social events	2
Chairman Mick	2
Beer & Pub News	3
Beer & Pub News	4
Pub Preservation	5
Ian McLaren	6
Membership information	7
Banana Bread Beer?	7

## Inside

**A new Pub Guide to Bloomsbury & Holborn (WC1) coming soon**

## Pub Preservation in Bloomsbury and Holborn

This Guide presents the reader with the opportunity to enjoy a selection of historic pub facades and interiors, within an area of central London that is often only explored in depth by tourists. Many pubs, have links deep into London's past, and now provide the modern day drinker with the ability to become part of history.

English Heritage listed building status applies to the following entries in this guide: Apple Tree (II), Calthorpe Arms (II), Cittie Of Yorke (II\*), Lamb (II), Museum Tavern(II), Pakenham Arms (II), Princess Louise (II\*), Queens Head Acton Street (II), Queens Larder (II), and the Rugby Tavern (II).

The Cittie of Yorke High Holborn stands on a site, which has been a public house since 1430, and now presents an outstanding building with an imposing four-storey frontage and interior akin to a medieval great hall. Features of note include a triangular fireplace of 1815, with an under-floor flue, drinking 'booths', and an array of antique casks. Hidden underground the building has extensive cellars.

A short walk away is the Princess Louise of Holborn. The innocent façade of which gives little clue to the spectacular interior within. Built in 1854 and redecorated in 1891 by WB Simpson and Sons its Victorian interior remains relatively intact. Elaborate joinery, stained glass, decorative tiling and an ornate ceiling provide drinkers with a delightful drinking experience. Following which a visit to the facilities (for the male reader) will reveal a rarely seen period design.

The Museum Tavern close to the British Museum is again one further example of an unassuming pub with a long history. Built on land once owned by William de Blemund in the late 12th century, and known as *Blemund's-bury*. The granting of leases to build, homes for the aristocracy in the late 17th century required community services to be established and a tavern is recorded on the site as early as 1723. Developed as a traditional public house in 1798, the architect William Finch Hill designed the 1855 expansion of the site. Today the pub maintains an ornate classic mahogany back bar and counter, along with two panels of stained glass dating from the late 19th century. It remains an historic alehouse in the heart of Bloomsbury.

The above are just a few examples of the delights of WC1 awaiting the more curious reader wishing to enhance their drinking experience.

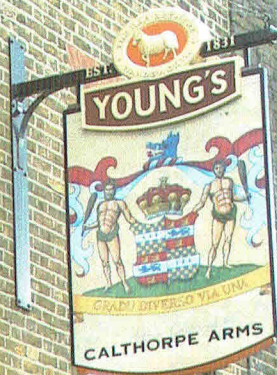
**Mark Hoile, North London CAMRA Pub Preservation Officer**



EST. 1831  
**YOUNG'S**  
**CALTHORPE ARMS**

WREN  
STREET WC1

GRAYS INN  
ROAD WC1



252

**CALTHORPE ARMS**

YOUNG'S





# Natural

How would you describe the taste?

From the Ram Brewery Wandsworth

