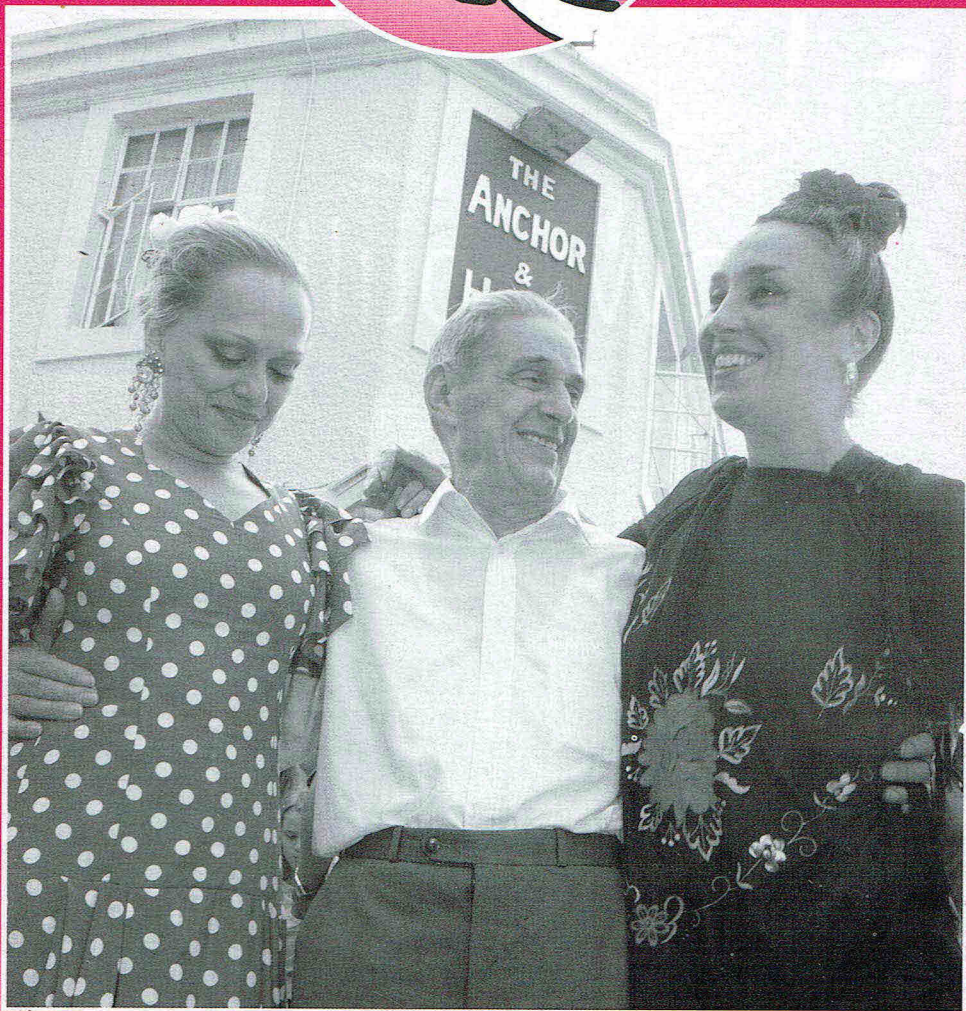



Produced on behalf of the London branches of the Campaign for Real Ale

LONDON DRINKER

VOL 25
No. 5

OCTOBER
NOVEMBER
2003





crowd pullers



9 beers that we take exceptional pride in brewing, 3 stouts, 3 ales and 3 lagers. Hand-crafted in small batches using modern technology whilst respecting the ancient art of brewing. The Porterhouse brews some of the finest beers in the world using only malt, hops, water, yeast, no chemicals and unpasteurised.

Many others say similar but we simply don't believe them.

We pride ourselves on the quality and unique taste of the stouts and beers we brew, so much so that Porterhouse stouts and beers are only available in a Porterhouse Pub, this ensures quality from grain to glass.

3 great stouts, 3 ales, 3 lagers & specials all on the premises. Including one of the largest selection of bottled beers. Only available in Temple Bar Dublin, Bray and Covent Garden London.

The Porterhouse Maiden Lane, Covent Garden
 tel. 0207 7836 9931 fax 0207 7379 7991
www.porterhousebrewco.com



PRIDE
 in everything we brew



London Drinker is published by Mike Hammersley on behalf of the London Branches of CAMRA, the Campaign for Real Ale Limited, and edited by Geoff Strawbridge.

Material for publication should preferably be sent by e-mail to geoff@coherent-tech.co.uk.

Letters by post may be sent to Robin Forshaw-Wilson, 16 Sunningfields Crescent, Hendon, NW4 4RD.

Press releases should be sent to Dave Lee, 60 Fossil Rd, Lewisham, SE13 7DE.

Changes to pubs or beers should be reported to Capital Pubcheck, 2 Sandtoft Road, London SE7 7LR or by e-mail to capitalpubcheck@btmail.com.

For publication in December 2003, please send electronic documents to the Editor no later than Wednesday 12 November.

SUBSCRIPTIONS: £3.00 for mailing of 6 editions should be sent to Stan Tompkins, 122 Manor Way, Uxbridge, Middlesex, UB8 2BH (cheques payable to CAMRA London).

ADVERTISING: Peter Tonge; Tel: 020-8300 7693.

Printed by Cliffe Enterprise, Lewes, East Sussex.

EDITORIAL

A STAIRWAY TO HEAVEN

Real cider is pure, freshly pressed, apple juice fermented with its own natural yeast; perry is made in the same way but uses pears. Autumn is, of course, the time of year when these products are made and CAMRA has designated October this year as its first national cider and perry month. So what has cider to do with CAMRA? Well, as it happens, CAMRA has officially supported real cider since the mid-seventies, almost as long as the organisation has been in existence. And what a poor state the industry is in!

Over ninety per cent of all the UK cider is produced by only two companies - Matthew Clark (who own Taunton Cider) and Bulmers, recently bought by Scottish and Newcastle Breweries. And almost none of it is real. The closest you come to a genuine product is either Addletons (made with apple concentrate) or Bulmers Traditional, now rumoured to be made by Westons.

These two companies have, between them, tied up most of the breweries and pub companies, leaving several hundred smaller producers fighting for around eight per cent of the UK market. Thus you're far more likely to see Strongbow or Blackthorn in a pub than even Westons, who deliver nationally.

What's even worse is breweries' and pub chains' attitudes to real cider. Under the old Beer Orders, tenants of national breweries were allowed a guest cider alongside their guest beer, but this privilege has now gone. And of course, this never applied to pub companies at all.

As an example of general attitudes to real cider, I know of one tenant from a pub owned by a London brewery who wanted to put on a small range of ciders in October, but was not allowed to do this. Breweries nationwide may be grateful for CAMRA support in promoting their beers, but when it comes to cider (which they don't produce themselves), forget it.

You can also almost forget it when it comes to cider in London. When you think that up to about 30 years ago, there were still cider houses in London, the situation today is pretty dire - and it's getting worse. Ten years ago, out of about five and a half thousand pubs in London, only one and a half per cent sold a real cider, and most of that was Westons. And a lot of that was sold in Hogsheads and Firkins, two chains that have either changed or no longer exist. So now, we're down to about 0.5%. Earlier this year, my own CAMRA branch published a guide to the pubs of WC1, and not one of them sold a real cider. What a disgrace!

And is the perry industry in a better state? Well, I'll answer that with just one question. Just name me one pub that regularly has a perry on sale. I can, but can you? I rest my case.

Mick Lewis

Chairman, North London CAMRA

Views expressed in this publication are those of their individual authors and are not necessarily endorsed by the Editor or the Campaign for Real Ale Limited.

IN THIS ISSUE

Quiet, please	6
National news	8
Local round up	10
The King's Head	12
Letters	16
Branch diaries	20
Capital Pubcheck	22
Membership form	29
Literary pubs	31
Idle Moments	35
Crossword	38

The Red Lion
1 Mill Lane,
Godalming,
Surrey
01483 415207



**The only family-owned
and run Freehouse in
Godalming**

*(30 odd minutes from Waterloo on the
Portsmouth line)*

**Did you
see our last
advert?**

*60 different Independent
Brewery Ales in three months!*

*Well we've done the same again
but we're not going to tell you
what you've missed this time*

*We are open all day every day
(except Christmas Day)
Offering good home cooked food
as well as Real Ales and over
100 international bottled lagers*

**Halloween
Beer Festival**
from 31st October to
2nd November

*CAMRA Good Beer Guide
1994/5/6/7/8/9/2000/1/2/3*

CIDER AND PERRY: NORTH LONDON

In October, four pubs in North London will be participating in CAMRA's first Cider and Perry Month.

From the weekend of 18/19 until 25/26 the Wenlock Arms, Wenlock Road, N1, the Duke of Hamilton, New End, NW3 and the Oakdale Arms, Hermitage Road, N4 will have a range of real ciders and perries. The Head of Steam at Euston will be offering a changing range throughout the month.

On Saturday 25 October, the North London Branch will also be holding a mini beer festival at the Wenlock Arms as their cider week comes to a close.

KINGSTON'S CIDER STAGGER

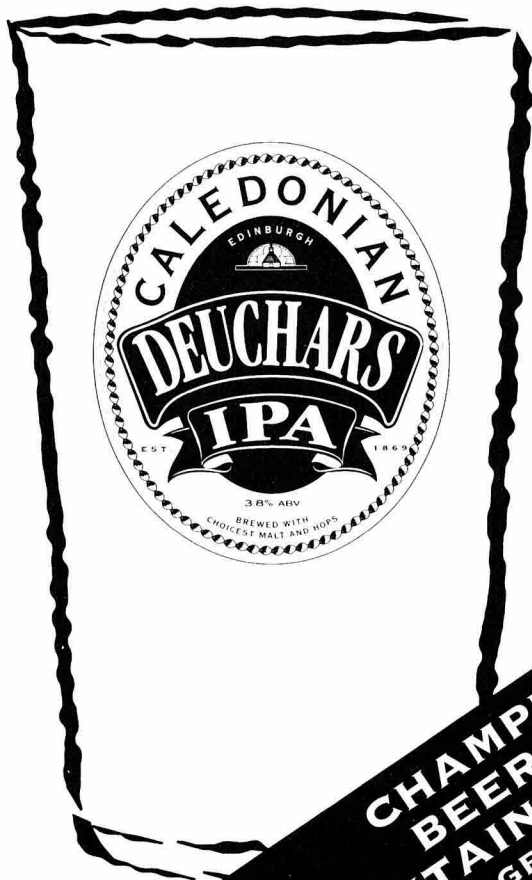
The last Surrey cider house closed in 1999 but, unusually for London, real cider can be found in Kingston.

The Cider Stagger will start at 7pm on Saturday 25 October at the Willoughby Arms, 47 Willoughby Road (020-8546 4236); the landlord hopes to have as many as 10 ciders and perries available and running on into his Halloween Beer Festival. Next stop is the Canbury Arms, 49 Canbury Park Road (020-8288 1882); this pub generally has a cider available on handpump and is famous for its cider festivals. Third stop is the Kings Tun, 153/157 Clarence Street, (020-8547 3827); this Wetherspoons near Kingston station has Westons Old Rosie all year round. The last stop will be in Surbiton at the Lamb, 73 Brighton Road (020-8390 9229) whose enterprising landlord sometimes experiments with a few tubs.

Gill Baker, Kingston Beer Festival cider bar manager looks forward to the evening: "90% of cider in this country is bland, refrigerated fizz; come along and try some of the real thing."

**Advertise in next
month's
LONDON DRINKER
from only £45 (quarter
page - all inclusive)
Call Peter Tonge
now on
020 8300 7693**

YOU'RE DUE A DEUCHARS.



**CHAMPION
BEER OF
BRITAIN ~ 2002**
CAMRA GBBF, OLYMPIA

CALEDONIAN BREWERY, EDINBURGH

QUIET, PLEASE!

Irritated by years of exclusion from favourite pub after favourite pub by the spread of piped music, I wrote to the Daily Telegraph in 1994 and asked readers for the names of pubs they knew for a pop-free-pub-guide I had in mind. I didn't think I would get much of a response, but eight years later we are compiling the 6th edition of *The Quiet Pint* - the only guide to pubs with no piped music.

The original idea attracted a lot of support from prominent personalities, including international cellist Julian Lloyd Webber, who wrote the first foreword, and actress Joanna Lumley who joined him and concert organist Dame Gillian Weir to launch the book.

The Daily Telegraph liked it and branded it as their own from the second edition. Then Tim Martin, chairman of JD Wetherspoon plc broke the Wetherspoon 'no advertising' policy to sponsor its front cover and maps.

Background music is not one of the necessities of life. In fact, however much you love music, if it is something you haven't chosen, why should you be forced to listen to it? How often have you parked outside an idyllic 15th century country pub in a delightful situation only to open the door to be greeted by the 21st century in full top-of-the-pops voice? Someone once said to us that every pub should have a revolving door so you could swing in, listen for the music, and if you hear any, swing out again!

When compiling a new edition of the book, the worst thing you can hear is that the landlord/landlady has changed. Nine times out of ten we find they are unable to cope with life without constant background music. The decision to

introduce music has nothing to do with the customer; it's usually to keep the bar staff/new landlord happy. They seem unable to grasp that the average customer doesn't need constant background noise.

There is a lovely 15th century pub in Lancashire which, not satisfied with just piped music, also has a fruit machine, video and juke box - often all going at the same time! A new twist is from tyrannical kitchen staff. We have been advised that the front-of-house staff of two of our muzac-free pubs are too terrified of the chef to ask him to switch off the radio in the kitchen! So we are going to have to demote the pubs.

We are always looking for new pubs to add to our list. Many of our readers and members of the Pipedown Campaign are our eyes and ears. Some belong to CAMRA which we have greatly admired from the start.

Regrettably I was unable to accept an invitation from CAMRA's Greater London region to talk about *The Quiet Pint* to a recent meeting. In writing, may I therefore seize this opportunity to ask as many of you as possible to be our eyes and ears. I don't know what we can do in return for you. If we can reciprocate somehow, we'd be only too pleased.

Somewhere out there in England, Scotland and Wales are some precious traditional ale houses serving a well-kept pint without musical accompaniment. If they are not featured in *The Quiet Pint*, and CAMRA knows about them, we'd like to know about them too.

Derek Dempster

Editor, *The Quiet Pint*

2004 GOOD BEER GUIDE AVAILABLE NOW

The 2004 (31st) edition of CAMRA's popular guide to Britain's real ale pubs is now on sale. Entries are decided by CAMRA branches on the strength of regular surveys and reports by CAMRA members. There is no charge for inclusion of a pub in the Good Beer Guide. The 4,500 pubs listed are chosen on their merits by CAMRA's volunteers.

The Guide includes information about pub facilities for families and the disabled, history, architecture, food, accommodation, local places of interest and, of course, the beer. At the time of its publication, the Good Beer Guide aims to showcase the best pubs serving the finest real ale in the country.

A full list of CAMRA's National Inventory of Pubs - pubs with interiors of outstanding historic

interest - is given, helping to save these pubs for posterity. Special feature articles this time highlight the real ale revival led by smaller brewers; beer as the perfect companion for food; and the way statistics - and the big brewers - distort real ale's true market share.

Unique to the Good Beer Guide is a list of every brewery in the country, large and small, and details of all the cask-conditioned and bottle conditioned beers they brew, with professional tasting notes.

Contact CAMRA Headquarters if you would like to buy a copy of the 2004 Good Beer Guide - if you join CAMRA it will cost you less - but also, more important, contact your local CAMRA branch if you would like to survey pubs for possible inclusion in the 2005 edition!

CALLING ALL CENTRAL LONDON DRINKERS

Do you work, live or play in, W1 Fitzrovia, Marylebone, Mayfair or Soho, or WC2 Covent Garden or Leicester Square? If you are a CAMRA member and visit pubs in these areas, your knowledge is needed to help survey a few of them for a new edition of CAMRA's West London Pub Guide, due for publication in 2004 - the first for 15 years.

The Guide is an ambitious project, a joint effort by four CAMRA branches covering a large swathe of Greater London including the West End, all W postal districts and outer areas such as Twickenham, Hounslow, Uxbridge and Harrow. It will provide up to date information on real ale availability and, it is hoped, reveal a few hidden gems. The full extent of pub closures and renamings will also become apparent. All 1350 pubs and bars selling draught beer will be listed but only those selling real ale will need full details and descriptions. About 400 are in W1 or WC2, which is where your help would be most valued.

If you would like to help, please write to Alex Langford, 5 Marryat House, Churchill Gdns, London SW1V 3DN (phone 020-7821 8101) or e-mail: capitalpubcheck@hotmail.com to request survey forms. Please give your name, address, CAMRA membership number, contact phone number and the area you would like to survey - say 6 to 10 pubs - and we will get back to you.

THE ROYAL OAK



44 TABARD STREET, LONDON SE1
Tel - 0207 357 7173

Traditional Harvey's Sussex Ales,
Served in a Traditional Atmosphere

Open Mon-Fri 11am-11pm

Food Available
Lunchtime & Evenings

Nearest tube - The Borough



6X sells through national distributors

Interbrew, Carlsberg-Tetley, Scottish Courage, Coors and Beerseller.

◆ Theakstons regain independence

By the time this magazine is published, details will have been finalized of the decision by Scottish & Newcastle to free Theakstons to compete as an independent brewery once again. Alleluiah!

◆ Champion award goes to Scotland again

For the second year in succession, a Scottish brewery has won the Champion Beer of Britain award at the Great British Beer Festival, held at Olympia in August. 'Bitter & Twisted' brewed by Harviestoun of Dollar in Clackmannanshire was judged to be the best beer in Britain by a panel of brewers, beer writers and journalists. The beer is described in the 2003 edition of the Good Beer Guide as, 'a refreshingly hoppy beer with fruit throughout. A bitter-sweet taste with a long, dry, bitter finish. A golden session beer.' It emerged the overall winner from over fifty finalists in eight categories including beers from tiny micros to major regional brewers.



The Silver award at Olympia went to Crouch Vale Brewer's Gold from Essex. Bronze went to Lidstones Rowley Mild from Suffolk.

Bitter and Twisted is not commonly seen in London, but Fuller's did a deal with Harviestoun to supply it in 24 of their managed houses during September.

◆ CAMRA launches new 'Good Bottled Beer Guide'

In 1998 CAMRA launched the first ever Good Bottled Beer Guide, concentrating on bottle-conditioned beers ('real ale in a bottle') - unpasteurised beers that contain yeast and continue to ferment in the bottle for a fuller, fresher flavour just like draught real ale ferments in the cask in the pub cellar. At the time, bottled real ales were just beginning to bounce back. Back in 1971, when CAMRA was founded, there were just five such bottled beers in regular production and by the time the book hit the shelves that number had increased

to around 170.

Now, however, real ale in a bottle is booming. The brand new edition of the Good Bottled Beer Guide features more than 500 beers, prompting author Jeff Evans to describe the development as 'beer's quiet revolution'. *"Small brewers in particular have returned to bottling in a big way, partly in response to the way in which the pub market has been closed off to them by giant pub companies, who prefer to buy discounted beer from big breweries," he said. "The small brewers have looked for other outlets and discovered that bottled beer is the answer."*

As the Good Bottled Beer Guide reveals, real ale in a bottle can now be found on sale in all sorts of outlets, from corner shops to country craft centres. Many examples are now sold directly at farmer's markets, alongside the freshest local vegetables and the tastiest hand-made cheeses. *"This not only sums up the drive and innovation of the microbrewing sector but also the quality of the bottled beers themselves,"* said Jeff Evans. *"A hand-crafted bottled real ale, made with top ingredients, perfectly fits the ethos of the farmer's market, where the best local produce can be tried and purchased, cutting out the middle man. Such events are an ideal showcase for all that is good in British brewing. People can see how beer is really an excellent example of quality agricultural output and not just about industrially produced global brands."*

Some supermarkets, who appreciate that quality and localness have important sales benefits, have also signed up to the real ale in a bottle revival. Safeway, in fact, is sponsor of the Good Bottled Beer Guide.

The new total of over 500 beers is an increase of over 150 since the last edition of the book was published just two years ago. *"Although the bottled beer market is still dominated by filtered, pasteurised and artificially carbonated beers, it is clear that real ale in a bottle has found a niche that is getting bigger every day."*

The Good Bottled Beer Guide features all known real ales in a bottle produced in the UK, with information on ingredients, tasting notes and other important details. There are also features on bottled real ales from overseas, organic beers, matching beer with food and how to keep and serve real ale in a bottle, plus a listing of the UK's top beer shops to help you track down the featured beers. A 256-page pocket hardback, the book is priced £8.99 and is available from good bookshops or direct from CAMRA on 01727 867201 (discount for CAMRA members).

◆ Wetherspoons increase turnover but bemoan tax and red tape

JD Wetherspoon plc recently announced their results for the year to July, with turnover up and

more pubs opened - 45 in the year, bringing the total to 638. Operating profit was up to £75m but Tim Martin, in his Chairman's statement, complained of the increases in taxation and red tape - citing excise duty which alone will cost the company an extra £2million this year. Martin stated that pubs now pay around 40% of their turnover in taxes.

The rate of new pub openings was around half that of last year, and this trend is likely to continue. Just seven sites were in construction as at the end of August.

◆ Brakspear's return to Oxfordshire welcomed

Brakspear beers are to find a new home in Oxfordshire, following the sale of the Brakspear brewery in Henley for redevelopment. Refresh UK, who took over the beers when Brakspear converted itself into a pub company, have been searching for a new brewery for the beers but now space has come available at the Refresh-owner Wychwood brewery in Witney, which is to be expanded to include some of the Brakspear brewing equipment.

CAMRA has welcomed moves to bring Brakspear

beers back to Oxfordshire, and is calling on Refresh UK to ensure they are returned to their former glory through careful taste matching and quality control. Mike Benner, Head of Campaigns and Communications said, *"We had hoped for a new brewery as close as possible to the original Henley site and a new brewhouse and tun room at the Wychwood Brewery in Witney is a good outcome. Most important of all is that Refresh UK is bringing the unique Brakspear 'double-drop' method of fermentation back to life and this will be essential in getting the beers to taste right. In order to secure a bright future for Brakspear beers I think it is essential that Refresh UK works to ensure that the 'new' beers taste every bit as good as the Henley originals and put sound quality control procedures in place to make sure every pint sold is as good as today's discerning beer drinkers expect."*

CAMRA also expects all Brakspear pubs to sell Brakspear beer, not the same old national brands. Many beer drinkers will never forget the appalling decision to close the Henley Brewery. It's up to Refresh UK to convince drinkers that the beers will be every bit as good as they were before the closure.

The Nelson Brewing Company

The Historic Dockyard, Chatham, Kent

Brewers of hand-crafted, cask-conditioned ales brewed on a world heritage site at the Historic Dockyard, Chatham.

We use only the finest malted barley and whole Kentish hops.

Why not arrange a brewery visit and take the opportunity to taste a range of our ales and enjoy the surroundings of the Historic Dockyard.

We also cater for outside bars and events for any occasion.

Our ales are also available in take home 36 and 18 pint polypins as well as firkins, just phone the brewery and we will rack one off especially. Why not name a beer to your own requirements, we will make a pump clip tailor-made for you.

Our beers are also available at our own Nelson Brewery Company pubs.

- ◆ **The Elephant**, The Mews in Faversham, Kent
- ◆ **The Hope and Anchor**, Station Road, Herne Bay, Kent
- ◆ **The Little Crown**, High Street, Chatham, Kent



Public and trade enquiries welcome, contact us for a full list of our beers and prices or to arrange one of our team to visit you on site.
Telephone: 01634 296407 or 01634 828032 Fax: 01634 295168

◆ Fuller's open new pub and sponsor rugby sevens

Fuller's have proved their commitment to City pubs with the investment of over £1million in their new pub in Telegraph Street. The Telegraph is just off Moorgate and is situated on the ground floor of a recently redeveloped property. It is on the site of a former inn, the Butler's Head. The managed pub has been fully refitted including large windows along the comfortable seating area, which doubtless proved useful during the hot summer weather. A separate no smoking area is provided.



Simon Emeny, Fuller's retail director, said: *"The purchase of The Telegraph and our investment of over a million pounds in it is further proof of our long-term commitment to the City, and gives us a pub in an area we have been targeting for some time. It is a fantastic site and I think it will be very popular with the local businesses."*

Meanwhile Fuller's promotional activities continue with the sponsorship of the Middlesex Sevens Rugby tournament. The launch of the 'London Pride Middlesex Sevens' took place in early August at the Sun Inn, Richmond, where players, Pat Sanderson and Chris Sheasby joined Fuller's brands and marketing manager, David Spencer and John Roberts, Fuller's beer and brands director at the pub to announce the London Pride sponsorship and the draw of matches for the forthcoming competition.

All 12 Premiership rugby clubs took part in the



tournament on 16 August along with four invitation sides. In the past, the invitation sides have proved unbeatable, but this time the premiership clubs proved they were not going to be beaten any more; Northampton Saints became the first premiership club since 1995 to win the competition when they beat Newcastle Falcons in the final. London Pride was available on draught all day throughout the bars in Twickenham Stadium.

The London Pride Middlesex Sevens raised funds for two charities, the Wooden Spoon Society and the PRA Benevolent Fund.

◆ Pitfield celebrates 21 years

Martin Kemp, owner of Pitfield Brewery, celebrated 21 years of brewing real ale in July by cutting a birthday cake with local CAMRA member Keith Mapstone.



Pitfield are noting the year by producing a range of bottled real ales with recipes from the last century including a mild, IPA, stout and porter. They are available from the Beer Shop, next to the brewery in Pitfield Street, N1. Pitfield is now the third oldest real ale brewery in London.

◆ Young's reward driver's loyalty

A driver who has been delivering Young's beer for 35 years has been rewarded for his loyalty by being taken on an all-expenses-paid day out by the brewery chairman.

Eddie Geary, who lives in Banbury Street, Battersea, was taken for a slap-up meal by chairman John Young when he was officially accepted into Young's 35 Club, open only to long-serving employees and pensioners. Eddie, 53, was joined by a dozen of his colleagues on the trip to Young's Waverley pub on the seafront at Bognor Regis, where he received an inscribed silver tankard before sitting down to a lobster lunch.

He joined Young's in 1968 when the Beatles were top of the hit parade with Hey Jude, Eddie's all-time favourite song. He worked three days in the wine and spirits store before switching to the transport department, first as a driver's mate and since 1972 as a driver. Eddie said: *"I've had a wonderful time with*

LOCAL ROUND UP

Young's but I'm not sure where the 35 years have gone. It seems like yesterday when I joined the brewery."



The picture shows John Young (left) filling up Eddie Geary's silver tankard with Young's Bitter.

◆ Les Heath - a tribute

When Les Heath arrived at the Anchor & Hope pub, High Hill Ferry, London E5 in 1953, he ran the pub with his soon-to-be wife, Nancy and her parents. In 1974, the pub was sold to Fuller's, by which time Les had become a tenant in his own right. He remained in the Anchor & Hope as the tenant for the rest of his life - Fuller's reckon that, in that time, he sold over nine million pints.

Awarded an MBE in 1997 for his services to the pub trade, Les saw many changes in his time at the Anchor & Hope. The price of a pint rose from a shilling to £2.28, and the numerous horse drawn barges feeding the wood yards and factories of the River Lea were replaced with the occasional pleasure craft.

To celebrate his 50 years at the pub, Les hosted a whole day of activity on Saturday 19 July. There were bands, flamenco dancers, a Punch & Judy show and even a string ensemble playing Bach from a barge on the river. The fun and festivities culminated with a presentation from CAMRA at 7.30pm.

Les said, 'When we arrived, we were planning on staying for three to four years. There were originally four pubs in a row on the riverbank - and I'm the only one left, so I must be doing something right!' Fuller's tenanted general manager Mike Clist said, 'This is a fantastic achievement. Les is the longest-standing publican I know of. He's seen some great change at the Anchor & Hope and it's great to see that the pub has survived where others have disappeared. He's definitely got that special something!'

We shall miss that special something; sadly, Les died at the beginning of September. R. I. P.

T. J. Duffy



282 NORTHFIELD AVENUE,
EALING, LONDON W5 4UB

TEL: 0208 932 1711 FAX: 0208 932 1722

GUEST BEER REDUCED IN PRICE ON TUESDAYS

THIS MONTH'S GUESTS INCLUDE
GREENE KING 1799
FULLERS LONDON PORTER & 1845

MONDAY NIGHT - QUIZ NIGHT
TUESDAY NIGHT - REALALE PROMOTION
THURSDAY NIGHT - STEAK & WINE
PROMOTION

SUNDAY LUNCH - 12 noon - 4pm
SUNDAY NIGHT - LIVE MUSIC &
TAKE YOUR PICK

ALWAYS IN STOCK - FULLERS LONDON PRIDE
AND GREENE KING ABBOT

NEAREST TUBE - NORTHFIELDS (PICCADILLY LINE)



MEDWAY
BRANCH OF CAMRA
PRESENTS



"DOWN A FEW AT MEDWAY TWO"

Friday 14th & Saturday 15th November 2003 at
The Stanley Rooms, St. George Hotel, Gundulph Road, Chatham

ADMISSION (over 18's only)

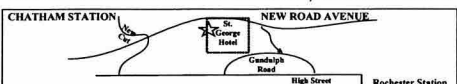
Friday £2.50, CAMRA members FREE until 7pm then £1
Saturday £2.50, CAMRA members £1

OPENING HOURS

Friday 12 noon - 10.30pm, Saturday 11am - 10.30pm

Last admission (Both Days 10pm)
Partial Disabled Access • Hot & Cold Food Available
55 Real Ales • Small selection of Ciders and Perry
Souvenir Glass • Festival T Shirts

Venue is 10 minutes walk from both Rochester/Chatham BR Stations



Further information from Heather Tel: 01634 294 447

OFF WITH THE KING'S HEAD? WE URGE A REPRIEVE

Here is the text of a letter sent on 8 September to the London Borough of Merton planning department.

Dear Sir/Madam

PLANNING APPLICATION NO 03/P1690

King's Head Hotel, 18 Merton High Street, Colliers Wood, London SW19 1DN

CHANGE OF USE FROM PUBLIC HOUSE TO OFFICE ACCOMMODATION WITH BUS PARKING AREA IN REAR CAR PARK

I am writing to you in my capacity as Chair of the London Pubs Group of the Campaign for Real Ale (CAMRA).

I wish, by means of this letter and on behalf of the London Pubs Group, to object to the application for change of use of the King's Head Public House, 18 Merton High Street, SW19 to office accommodation. One reason for our objection is on the grounds of this pub's historic interest. The London Pubs Group maintains a list of public houses in London which have interiors of historic interest. This list is called the London Regional Inventory and the first edition is expected to be published in booklet form some time in 2004 after consultation on the draft with various interested bodies including local authorities. The King's Head, 18 Merton High Street, SW19 has recently been added to the draft London Regional Inventory because much of its interior has not been altered since before the Second World War. The following is an extract from the

description of the pub as in the draft Regional Inventory: 'Large pub rebuilt in 1931. Attractive mosaic and ceramic panels with Henry VII's bust and Young's ram. Still two separate parts either side of the serving but originally there were clearly further subdivisions. Extensive amounts of fielded panelling. One original fireplace (right side). Original counter and bar-back (left side). Original tiling in the loos throughout.' At present the only other pub in SW19 which is included on the draft London Regional Inventory is the Fox and Grapes, Camp Road. Such survivals are very rare, especially in London, and, although modest, they represent a significant part of the local heritage.

The Government's document, *The Historic Environment: a Force for Our Future* says '... buildings and places can ... play a role in developing a sense of active citizenship: by learning about their own environment ... people feel a greater sense of belonging and engagement.' There has been a public house on the site of the King's Head since the late 15th century and for much of its history it has been a focal point in the community. Decisions on proposals to remove community assets such as public houses should never be taken lightly.

In their supporting documentation the applicants claim that the area is overpubbed. However, they do not mention the fact that a new residential housing development is currently being built near the Savacentre. Such an addition to the population of the area can only increase the demand for public houses. Furthermore, the applicants claim that they received no expressions of interest for running the building as a public house. However, the applicants do not appear specifically to have endeavoured to offer the building for sale as a public house. In the right hands there is every possibility that the King's Head could thrive in this up-and-coming area, especially as it is located in the Wandle Valley Conservation Area. Only a handful of pubs in the area retain a traditional feel, let alone substantial amounts of intact interior fixtures and fittings at least 60 years old. Traditional pubs of this type are more under threat than ever before. As awareness of local heritage increases residents and tourists alike all over Britain are actively seeking out buildings which have remained largely intact for decades and this includes public houses. This is evidenced by the popularity of CAMRA's new edition of their "National Inventory of Pub Interiors of Outstanding Heritage Interest" which has recently gone on sale.

The proposed conversion of the King's Head to office accommodation and the cessation of its function as a pub would be a great loss to the area. If the Council is truly concerned about Merton's heritage it will seek to preserve public houses such as this. The London Pubs Group urges Merton Council to refuse planning permission for the change of use of the King's Head, 18 Merton High Street, SW19.

Yours faithfully

Jane Jephcote, Chair, London Pubs Group

THE HEAD OF STEAM

**Euston Station,
London NW1**

Tel: 020 7383 3359

**OCTOBER IS
CIDER MONTH**
at least 3 traditional ciders
on sale all the time.

**NOVEMBER IS
YORKSHIRE MONTH**
starting Nov 1st, we aim to present beer
from every independent Yorkshire
brewery.

SILLY PRICE DEALS
for polypins in December - check it out.



10th CROYDON & SUTTON REAL ALE FESTIVAL

WALLINGTON HALL

STAFFORD ROAD, WALLINGTON

Opposite Sainsburys

Less than 10 mins walk from Wallington Station

9th - 11th OCTOBER 2003

OVER 40 REAL ALES

CIDER & PERRY

BRITISH "REAL ALE IN A BOTTLE"

FOREIGN BOTTLED BEERS

HOT & COLD FOOD

CAMRA PRODUCTS

SOUVENIR GLASS

DISABLED ACCESS AND TOILETS



Fullers Head Brewer John Keeling will answer your brewing questions during Thursday lunchtime

OPENING TIMES & ADMISSION CHARGES

Thursday 9th 11am - 5pm	FREE Admission
Thursday 9th 5pm - 10.30pm	£2.50 (Members £1.50)
Friday 10th 11am - 5pm	FREE Admission
Friday 10th 5pm - 10.30pm	£3.00 (Members £2.00)
Saturday 11th 11am - 6pm	FREE Admission
Last evening admission: 10pm Right of admission reserved	





THE FIFTH TWICKENHAM BEER FESTIVAL

from the RICHMOND &
HOUNSLOW BRANCH of
the CAMPAIGN FOR
REAL ALE

(Around 50 draught beers plus ciders, perries and foreign bottled beers)



at **YORK HOUSE**
Richmond Road, Twickenham



5 minutes from Twickenham BR Station

Bus Routes 110, 267 and 281 to Twickenham King Street
33, 290, 490, H22, R68 and R70 pass the entrance to York House

Opening Times

Thursday 23rd October	-	5.00pm to 10.30pm
Friday 24th October	-	11.00am to 10.30pm
Saturday 25th October	-	11.00am to 10.30pm

Admission £1.50 (£1.00 Friday lunchtime)
CAMRA members 50p (FREE Friday lunchtime)

www.jobin.freeseve.co.uk/rhcamra1.htm

With sponsorship from FULLERS and GRAND UNION BREWERY

BEER FESTIVALS

Forthcoming beer festivals in the South East include the following.

October 1-4 (Wed-Sat). Bedford Corn Exchange, St Paul's Square
October 3-4 (Fri-Sat). Worthing Richmond Rooms, Stoke Abbot Rd
October 9-11 (Thu-Sat). Croydon & Sutton Wallington Hall, Stafford Rd, Wallington
October 10-11 (Fri-Sat) Gravesend Old Gravesendians Assoc, Fleetway Sports Grnd, Bronte View, Parrock Rd
October 16-18 (Thu-Sat). Oxford Town Hall, St Aldates
October 23-25 (Thu-Sat). Twickenham York House, Richmond Rd
October 31-November 1 (Fri-Sat). Watford West Herts Sports & Social Club, Park Avenue
November 7-8 (Fri-Sat). Woking Leisure Centre, Woking Park, Kingfield Rd
November 14-15 (Fri-Sat). Medway St George Hotel, Gundulph Rd, Chatham
November 18-22 (Tue-Sat). Rochford Freight House, next to Rochford Railway Stn, Essex
December 2-6 (Tue-Sat). Pig's Ear Old Town Hall, The Broadway, Stratford E15
February 11-13 (Wed-Fri). Battersea Grand Hall, Battersea Arts Centre, Lavender Hill SW11

9th Watford Beer Festival

31st October to 1st November 2003

West Herts Sports Club, Park Avenue, Watford, WD18 7HP

Over 45 real ales, ciders and perrys from around the UK.

Open 12 noon to 11pm Friday; 11am to 11pm Saturday

Hot and cold food available both sessions to 8pm

Free entry to CAMRA/West Herts cardholders, £1 to all others

10th Woking Beer Festival

The 10th Woking Beer Festival will take place on Friday 7th and Saturday 8th November 2003 at Woking Leisure Centre, organised by Surrey/Hants Border CAMRA with Woking Leisure Centre and Woking Borough Council, plus strong support from CAMRA members from all over the South (and beyond!). 70+ real ales are planned to be available, plus ciders and perries and, of course, the SHB CAMRA foreign beer operation will be fielding a wide range of imported bottled beers. All subject to availability.

There are three sessions: Friday and Saturday evening from 6pm to 11pm, and Saturday lunch time from 11am to 3.30pm. Entrance strictly by ticket only, price £5.00. Tickets are available in advance from Woking Leisure Centre, Woking Park, Kingfield Road, Woking, Surrey GU22 9BA. Cheques, payable to "Woking Borough Council" + SAE please, or phone the credit card hotline (no booking fee) 01483-771122 (8am - 9pm) seven days a week.

The admission price includes a pint lined glass with a commemorative logo and also a festival programme. CAMRA members get a free pint (up to 5% ABV) on presenting their current membership card at the membership stand. Every session has live entertainment, plus recitals on the amazing Woking Wurlitzer organ in the Wurlitzer Hall. Soft drinks and food available at all times. An extensive range of brewery and CAMRA products will be on sale, with a Tombola to relieve you of loose change!

On Saturday lunch time parents may bring the kids for £1.50 per child, and use the Family Room. There will be a wide range of attractions and children's entertainments.

Woking Leisure Centre is less than 15 minutes walk from Woking Railway Station, and there's even a map of the area on the back of the ticket to show you how to get there!

Volunteer staff should e-mail wbfstaffing@yahoo.com or write to: WBF Staffing, 12 Hill Close, Horsell, Woking, Surrey. GU21 4TE. Read the Beer Festival web page at <http://www.wokingbeerfestival.co.uk> or <http://www.woking.gov.uk/leisure>

Tickets sell out quickly, so buy yours early!

Dear Editor

Page 8 of the current issue of *London Drinker* notes, 'Greene King announce new look for IPA' and goes on to refer to this beer as the leading cask brand in the South. It also refers to GK's ambition to knock Tetleys off its number one spot as the most popular session cask beer in Britain. Who is kidding whom? Clearly CAMRA are in an awkward position because GK are a major real ale brewer (qv?) but isn't this Emperor's Cloak time? Did we really spend years fighting the likes of Red Barrel to be foisted with something as awful as GK IPA? Do you want to go into a delightful thatched country pub in the middle of nowhere and be offered GK IPA? I think not!

The tragedy is that whilst it never was a great beer, it certainly was compared to the tasteless watery concoction now offered to us.

Instead of St Albans fawning to the great gods at Bury St Edmunds, somebody somewhere should be telling GK to get their act together and actually asking them to brew something vaguely palatable.

I have recently had an otherwise enjoyable long weekend in Northamptonshire ruined by wall-to-wall GK IPA.

Please, please do your bit to bring some common sense to this situation.

Thank you.

Michael Turner

Billerica

(I'd rather drink GK IPA than John Smith's Smooth any day, but I do take your point. At medium strength Greene King do brew other delicious beers but they seem to disown them. There's one called County branded as Ruddles (but quite unlike the old, stronger Ruddles County) and another called Original branded as Morlands but much tastier than any vaguely similar Morlands beer I can remember - Ed.)

Dear Editor

In view of Young's current full-frontal (sideways?) advertising campaign for Bitter can we look forward (or sideways?) to a bottled beer called The Ram's B*****ks from Wandsworth?

Just a thought.

Terry Hewitt

Croydon

Dear Editor

More guides on the web

Following my request for other beer guides on the web I can report thanks to Colin Marshall that pubs in West Sussex can be found at: www.robgs.org.uk/wsg.htm.

Real Ale in Gloucestershire is available at: www.john-barrett.demon.co.uk/camra/raigol/index.htm thanks to Simon Hall for informing me. Lunesdale pubs (Lancaster/Morecambe area) are at: www.lunesdalecamra.org.uk/pubs/comp.php.

North London pubs can be found at:

www.camranorthlondon.org.uk/nlpg/nlpg.html

but entries have been left blank where available information is out of date. For instance only about 10 pubs in N1 have descriptions. So next time you are in a pub with a N or NW postcode don't forget to jot down the list of beers and a description. The WC1 section to the North London web site is now fully up to date following the complete pubs survey done at the end of last year, but further updates are always welcome as indeed they are to all the other areas that we cover. The web site contains an update form, which is easy to complete and will be acted upon by the Webmaster to update the information and alert Capital Pubcheck.

Further on line guides may be found at <http://freespace.virgin.net/neil.worthington/pubs.htm>

Keith Emmerson

Dear Editor

I am writing to correct the information I gave Capital Pubcheck about the Beacon, Dagenham (Update 171, June/July *London Drinker*, page 28).

The rings league the Beacon is in is the South West Essex league, not the Iona Club League. The Iona Club is another team in the League who the Beacon were away to on the night I visited.

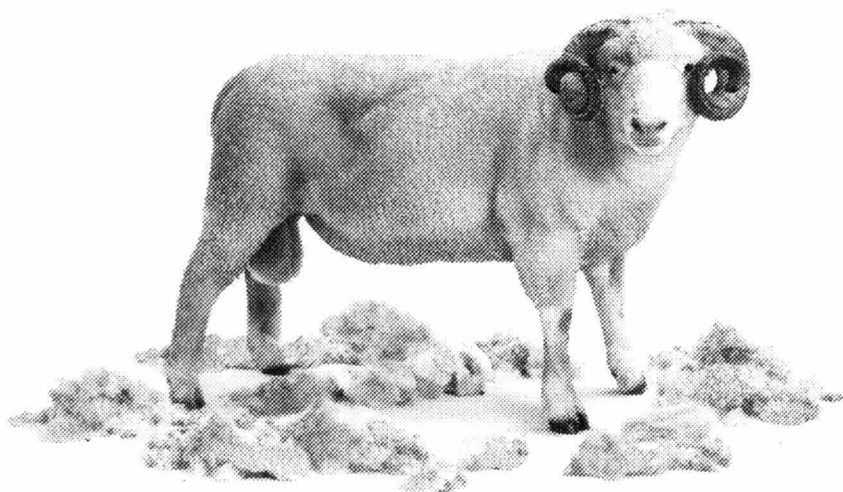
Although I describe it as an Irish Rings board it would be more accurate to describe it as a Cork board as the game is played in the Cork area. As well as general Irish migration to Britain there was a specific Cork to Dagenham migration in the 1920s and 30s. When the Fords plant was established in Dagenham, Fords bought up a foundry in Cork and moved to Dagenham so that a lot of the workers came over.

There is also a Gaelic Football/Hurling club locally and I have been told that Irish Road Bowling is played further out into Essex.

Having spoken to several people who are either Irish or of Irish descent I have noticed that it is only those from Cork who know anything about the game.

I have also noticed that there appears to be some antipathy between Cork and the rest of Ireland. There is a saying in Ireland, 'Never ask a man where he comes from. If he is from Cork he will tell you. If he is not, don't embarrass him.' Or as Donal Lenihan, an Irish Rugby player, says, 'There are two kinds of people, people from Cork and people who wish they were from Cork.'

Colin Price, Barking



Natural

How would you describe the taste?

From the Ram Brewery Wandsworth



Dear Editor

I have just read the June/July edition of your excellent magazine. I write in response to the item, 'Budget for bootleggers condemned'.

As a keen beer drinker I would of course welcome cheaper beer prices, which might be achieved if duty on beer in Britain was at a lower rate. However, this would have to be paid for elsewhere. I'm not sure that many people in Britain would be keen on paying the much higher rates of income tax that apply in near neighbours such as France and Belgium (although there are well known advantages in living in Belgium!)

However, one point confuses me. Why is that, in France, beer purchased in supermarkets is much cheaper than in Britain but, on the other hand, drinking in French bars is quite expensive when compared to Britain?

Perhaps you or your readers can explain this one.

C Ramage Barking

(Perhaps it might amount to passing on that higher income tax - Ed)

Dear Editor

I'm currently researching and writing a book about London's Egyptian connections, and would be grateful to know if other CAMRA members are aware of any pubs in the London area with an Egyptian connection.

This could be in the name (I know there was a Cleopatra pub in Lewes in Sussex once) or an association with a famous historical figure, such as Sir Ralph Abercromby, victor of the Battle of Alexandria. The pub doesn't still have to exist, but I do need to know the address and brief details of the connection.

You can contact me via email:

c.elliott@dsl.pipex.com

Chris Elliott

Manor Park 020-8989 6285

Dear Editor

The Radnor in Warwick Road, at the Olympia end, has had a rough time in recent years. Earlier this summer I was round that way early one Saturday evening and was disappointed to find it closed. Some of you may have found the same circumstances and feared the worst.

However, being that way last Saturday (Aug.30) about 9.30 pm I was glad to find it open. I had a chat with the new guv'nor; his Everards Beacon is good, and he hopes to bring in at least one more Everards once trade has picked up, and possibly more from elsewhere.

I'm sure this won't be news to GBBF staff, but should be good news to the wider drinking public.

Peter Wicks West Middlesex CAMRA

Dear Editor

Every year about now studies appear in the medical press about medical jargon. Apparently the gassers, slashers and the Freud squad have toned down and GPs are PC but A&E still use old standbys such as NFN (Normal For Norfolk). At least three other current diagnoses are of interest: UBI or UBX (unexplained Beer Injury); PFO (Pissed, fell over); and PGT (Pissed, Got Thumped). Most of these are probably ALFA related (Avoid - Lager Fizz Aggression) but let's have some Real acronyms and maybe a Beer Festival (BF) Scale.

I propose that Force 1 is JaQO (Just a Quick One). Force 2 (Mellow) soon leads to MoLO (Meaning of Life Obvious). Force 4 DBF (Drunk But Friendly) can sadly lead to DNA (Drunk, Now Annoying). In some cases Force 6 DSG (Drunk, So Generous) can be reached followed soon by DFA (Drunk, Fallen Asleep). The Beaufort Scale goes to 12, yes I know that one is logarithmic; the rest of the BF is best left to the imagination. Happy drinking but don't be an ALFA or UBI.

Dave Morgan

Kingston

Dear Editor

I've given up smoking for over two years. I don't see why I should have to give up drinking as well.

Pubs make millions of pounds by adding a small pipe next to the beer tap. A gaseous liquid is put through the pipe at the end of a pint. The gas from the pipe adds a bad taste.

In the past, occasionally, depending on the mood of the staff, one might get a bad pint but now nearly every pint is bad. Not only that, but it lasts until you finish the drink. The landlord tells you that the taste is improved with the added gas but all drinkers know this is not the case.

The pubs are taking pub drinkers to ransom. If they're not careful, people might start only drinking at home.

Bob Dylan, the singer, said, 'Money doesn't talk, it swears.' The publicans are doing what customers would be barred from doing in their pubs.

Robert Dangoor

Mayfair

Dear Editor

The Daily Telegraph reported on 31 August that 'Motorists stopped and snatched millions of cans of Miller lager after a lorry shed its load on the A77 near Ballantrae, in South Ayrshire, when it jackknifed as it swerved to avoid a deer in the dark.'

Do you believe this or is it a poor joke?

George Ingleby

Walthamstow

ADNAMS BROADSIDE.
CHAMPION BEER OF BRITAIN 2003.
GOLD MEDAL WINNER
STRONG BITTER CATEGORY.



ADNAMS. BEER FROM THE COAST

Welcome to our regular details of London CAMRA Branch contacts and events. This is where branches can say what is happening in their areas that might be of interest to drinkers across London. Events for October and November 2003 are listed below.

Branch meetings and socials are open to all - everyone is welcome to come along.

ALL LONDON EVENTS

November - Sat 8 (Lord Mayor's Show) All day Social. Royal Oak, Tabard St SE1 - **Sat 15** (8pm) Greater London Pub of the Year presentation. Royal Oak, Tabard St SE1. - **Sat 22** (11am) Regional meeting including Beer Festivals Seminar and guest speakers. Southside Bar, Imperial College, Princes Gdns, South Kensington SW7. - **Wed 26** (8pm) London Liaison Committee (Regional co-ordination meeting for London Branches) *Secretary: geoff@coherent-tech.co.uk*. Royal Oak, Tabard St SE1.

LONDON PUBS GROUP. *Jane Jephcote 020-7973 3102 (W), jane.jephcote@english-heritage.org.uk*

All branches and members interested in pub research and preservation welcome.

October - Sat 18 Daytime/evening crawl of Hammersmith, Barnes and Putney. Meet (12 noon) Dove, 19 Upper Mall, Hammersmith W6; then (1pm) Salutation, 154 King St, W6; (1.45) Hope & Anchor, Macbeth St, W6; (2.30) Brook Green Hotel, 170 Shepherd's Bush Rd, W6; (3.30) Red Lion, 2 Castelnau, Barnes SW13 (if reopened by then); (4.15) Sun, 7 Church Rd, SW13; (5pm) Coach & Horses, 2 Barnes High St, SW13 and (6.15) Duke's Head, 8 Lower Richmond Rd, Putney SW15. Use of public transport will be necessary at times.

November - Wed 12 (7.15 for 7.30) Meeting. Royal Oak, Tabard St, SE1 (upstairs).

BEXLEY. *Martyn Nicholls 01322 527857 (H)*

October - Wed 8 (8pm) Branch meeting. Earl Haig, Bexleyheath. - **Fri 10-Sat 11** Working social. Gravesend Beer Festival.

November - Wed 12 (8pm) Branch meeting. Fox, Upper Belvedere. - **Fri 14-Sat 15** Medway Festival. Working social will be held on the Saturday. - **Mon 17** (8pm) Bexley Beer Festival meeting. Robin Hood & Little John, Bexleyheath. *Website: www.camrabexleybranch.org.uk*

CROYDON & SUTTON. *Terry Hewitt 020-8660 5931 (H) 020-7918 3242 (W)*

October - Wed 1 (8.30) Social. Lord Nelson, 32 Lower Rd, Sutton. - **Thu 9 to Sat 11** Beer Festival. Wallington Hall, Stafford Rd, Wallington. - **Tue 21** (8.30) Social. Railway Telegraph, 19 Brigstock Rd, Thornton Heath. - **Tue 28** (8.30) Branch meeting. Dog & Bull, 24 Surrey St, Croydon. **November - Thu 6** (8.30) Joint social (with SW. London), Greyhound (Swan Bar), High St, Carshalton. - **Sat 22** (11.30) Tramlink crawl, meet Dog & Bull, 24 Surrey St, Croydon. - **Thu 27** (8.30) Branch meeting (incl. PotY shortlisting), Windsor Castle, 378 Carshalton Rd, Carshalton.

Website: www.croydoncamra.org.uk

EAST LONDON & CITY. *Bob Walker 07957 793360 (M)*

October - Fri 10 Beer and curry night. (7.30) Black Bull, 199 Whitechapel Rd, E1 (8.30ish Curry House then back to Black Bull). - **Tue 14** (8pm) Branch meeting. Black Lion, 59 Plaistow High St, E13. - **Fri 31** Social. Watford Beer Festival. Contact Bob for details.

November - Tue 11 (8pm) Branch meeting. Counting House, 50 Cornhill, EC3, followed by Pig's Ear publicity crawl. - **Wed 26** (8pm) Social. Lamb, Ship Tavern Passage, Gracechurch St, EC3.

Website: www.pigsear.org.uk

ENFIELD & BARNET. *Brian Willis 020-8441 1892 (H)*

Work: Brian.Willis@Saffery.com

October - Wed 1 (9pm) GBG 2004 launch. Lord Nelson, West End Lane, Barnet.EN5. - **Thu 9** (9pm) GBG promo. Picture Palace, Lincoln Rd, Ponders End EN3. - **Sat 11** Pub crawl of Oxford led by Inky Hills. Meet at Paddington station for 11.18 train. - **Wed 15** (9pm) GBG promo. .Madden's, High Rd, East Finchley N2. - **Tue 21** (9pm) GBG & Real Cider promo. Albion, Union St, Barnet EN5. - **Thu 30** (9pm) GBG promo. Beehive, Little Bury St, Lower Edmonton N9.

November - Wed 5 (9pm) GBG promo. Orange Tree, Highfield Rd, Winchmore Hill N21 (bring your own sparklers). - **Fri 7/Sun 9** Weekend in Antwerp, Belgium. Deadline for booking Oct 1st. Contact Tony Roberts 020 8482 9673 (h) or email anthonywroberts@hotmail.com. - **Tue 11** (9pm) GBG promo. Sebright, Alston Rd, Barnet, EN5. - **Thu 20** (9pm) GBG promo. New Crown, Chase Side, Southgate N14. - **Thu 27** (9pm) GBG promo & London Drinker pick up. Old Wheatsheaf, Windmill Hill, Enfield Town, EN2.

*Branch members can join news group by e-mail to camraenfieldandbarnet-subscribe@yahoogroups.com *Website: camranorthlondon.org.uk/enfieldandbarnet*

KINGSTON & LEATHERHEAD.

Clive Taylor 020-8949 2099 (H) 020-8540 1901 (W)

October - Tue 7 (8.30) Branch meeting. Malden Manor, Manor Drive North, Malden Manor. - **Wed 15** PotY presentation. King William IV, Mickleham. Travel on bus 465, dep Kingston (Eden St) 8.05, or Surbiton (Victoria Rd), 8.11. Return dep 10.39 or 11.39. - **Sat 25** (7pm) Cider Stagger of several pubs in Kingston to celebrate Cider & Perry Month. Start Wyloughby Arms. - **Wed 29** (8.30) PotY presentation. Wych Elm, Elm Rd, Kingston.

November - Mon 10 (8.30) Branch meeting. Alexandra, Park Rd, Kingston. - **Fri 14** Pub crawl from Thames Ditton to Surbiton, meeting George & Dragon, High St, then Angel, Ferry Tavern and more. - **Sat 22** Day trip to Lille by Eurostar train. Dep Waterloo 8.39am, returning 9.56pm. Fare about £49. Deposit £20, cheques made out to Clive Taylor.

NORTH LONDON. *Social contact: Mike Rose 07986*

458517, lynnmikeroase@aol.com; Branch contact: Mick Lewis 020-7935 1350 Mob. 07952 244687 orientmoron@yahoo.com

October - Tue 7 (8pm) Cider & Perry Month social. Oakdale Arms, 283 Hermitage Rd, N4. - **Tue 14** (8pm) Cider & Perry Month social. Head of Steam, Euston Station Colonnade, 1 Eversholt St, NW1. - **Tue 21** Cider & Perry Month Apple Day Hampstead crawl: (8pm) Flask Tavern, 14 Flask Walk, NW3; Holly Bush, 22 Holly Mount, NW3; (9.30) Duke of Hamilton 23 New End, NW3. - **Sat 25** (12noon to 11pm) All day Beer & Cider festival. Wenlock Arms, 26 Wenlock Rd, N1. - **Tue 28** (8pm) London Drinker Beer Festival meeting. Kings Arms, 11a Northington St, WC1

November - Tue 4 (8pm) WC1 Social. Lord John Russell, 91-93 Marchmont St; then Skinners Arms, 114 Judd St. - **Tue 11** (8pm) NW3 Social. Sir Richard Steele, 97 Haverstock Hill: then Washington, 50 Englands Lane. - **Tue 18** (8pm) GBG selection meeting. Calthorpe Arms, 252 Grays Inn Rd, WC1. - **Tue 25** Pub of the season presentation: Autumn.

Website: www.camranorthlondon.org.uk

RICHMOND & HOUNSLOW.

Brian Kirton 020 8384 7284 (H),

BrianKirton@blueyonder.co.uk

October - Wed 1 (8pm) Festival publicity crawl in Hampton Wick, starting White Hart, 1 High St, then other High St pubs finishing (10.30) Stryker's Railway. - **Tue 7** (7.30) Further publicity crawl in Twickenham, starting Eel Pie, Church St, then incl. Fox, Up 'n' Under, Cabbage Patch, finishing (10.40) Moon under Water. Help on both these crawls greatly appreciated. - **Tue 21/Wed 22** (9am to 5pm) Twickenham Beer Festival set-up, ready for opening **Tu 23 to Sat 25**, and take-down **Sun 26/Mon 27** (8am to 12noon each day). **Tue 28** (8.30) Branch meeting, newly-reopened Red Lion, 2 Castelnau, Barnes, SW13

November - Sat 1 (prov.) Evening presentation of Branch Pub of the Year award - winner to be announced at the Festival. See website that week. - **Thu 6** (8pm) Festival debrief, Cabbage Patch, 67 London Rd, Twickenham. - **Wed 12** (8pm) Pub surveying/social crawl of Bedford, start Beehive, 333 Staines Rd, then incl. (9pm) Load of Hay, 330 Staines Rd, and (10pm) Duke of Wellington, 331 Hatton Rd. - **Wed 19** (8pm) After last year's fun evening, Branch pool and darts challenge at the Crown, 174 Richmond Rd, Twickenham. All members welcome, small entrance fee and cash prizes. - **Tue 25** (8.30) Branch meeting, Lion, 27 Wick Rd, Teddington.

Advance Notice: Branch Xmas Dinner being planned for Fri 19 Dec: venue to be announced.

Website: www.jobin.freemove.co.uk/rhcamra1.htm

SOUTH EAST LONDON. Richard Martin 020-8402 0424

October - Wed 8 Social, Dacre Arms, 11 Kingswood Pl, Lewisham SE13. - **Thu 16** Social, Red Lion, 10 North Rd, Bromley (near Bromley North station) - **Tue 21** Social. Rose's, 49 Hare St, Woolwich SE18. - **Thu 30** Social/cider session. Head of Steam, Euston station.

November - Thu 6 Branch/committee meeting, Royal Oak SE1. - **Sat 15** - London Pub of the Year presentation, Royal Oak SE1. - **Thu 20** Social. Railway, West Wickham. - **Mon 24** First meeting for the 2004 Catford Beer Festival. Ashburnham Arms, Ashburnham Grove SE10.

Website: www.selcamra.org.uk

SOUTH WEST ESSEX. Andrew Clifton 01708 765150 (H), swessex@clara.co.uk

October - Wed 1 (8.30) Social. Crumpled Horn, 33-37 Corbets Tey Rd, Upminster. - **Thu 9** (8.30) Social. Grays Athletic FC, Bridge Rd, Grays. - **Wed 15** (8.30) Social. Cricketers, 299/301 High Rd (A11), Woodford Green. - **Sat 18** (12noon at pub) Out of Area social with coach to Engineers Arms, Henlow (East Anglian Pub of the Year + during Beer Festival). Coach from Chadwell Heath, Romford, Upminster and Stanford le Hope. Contact Graham Platt on 020-8220 0215 or Anne Radley on 01708 250146. - **Tue 21** (8.30) Social. Fairlop Oak, Fulwell Cross/Fencepiece Rd (A123), Barkingside. - **Thu 30** (8.30) Social. Swan (Hogshead), 123 High St (A1023), Brentwood. **November - Wed 5** (7pm) Bowling Social. Brewery, Romford (Bookings to Anne Radley on 01708 250146) followed by Goose, 143 South St (A1251), Romford. - **Thu 13** (8.30) Social. JJ Moons, 48/52 High St (A124), Hornchurch. - **Thu 20** (8pm) Social at Rochford Beer Festival, Freight House, Rochford (adj Rochford Station; for further details see website <http://rbf2003.seecamra.org.uk/index.html>) - **Thu 27** (8.30) Social. White Lion, Lion Hill (B1420), Fobbing.

Website: www.swessex.clara.net

SOUTH WEST LONDON. Mark Bravery 020-8540 9183

(H) 020-7438 6565 (W), markbravery@blueyonder.co.uk.

October - Mon 13 (7.30) Open committee meeting (Pub of Year shortlisting, Good Beer Guide 2004 distribution). Grapes, 39 Fairfield Rd, Wandsworth SW18.

November - Thu 6 (8pm) Out of branch social. Greyhound, 2 High St, Carshalton. - **Mon 17** (7.30). Open committee meeting (long-listing for GBG 2005), Duke of Devonshire, 39 Balham High Rd, SW12.

Website: www.swlcamra.org

WATFORD & DISTRICT. Andrew Vaughan 01923

230104, watfordcamra@hotmail.com

October - Wed 8 Abbots Langley Social. (8pm) Royal Oak; (8.45) Boys Home; (9.30) Compasses; (10.15) Swan. - **Wed 15** Watford Social. (8.30) Bodega; (9.15) Lloyd's No. 1; (10pm) Moon Under Water. - **Sat 25** Mystery Social by Train. Meet Watford Junction 12 noon or call Rachel on 07785 508135 if late. - **Fri 31-Sat 1 November:** Watford Beer Festival. West Herts Sports Club, Park Ave, Watford. Open 12-11 Fri, 11 - 11 Sat.

November - Mon 3 (8pm) Committee meeting. Estcourt Arms, Watford. Contact branch to confirm venue and time. - **Tue 11** Social. (8.30) Partridge, St George's Drive, Carpenters Park; (9.15) Wetherspoon's, Bridlington Rd, South Oxhey. - **Sun 23** Pub Quiz night. Meet (8pm) Nascot Arms, to select teams; then on to Southern Cross (8.45 sharp) for their quiz. - **Thu 27** Ricky Social. (8.30) Feathers; (9.30) Pennsylvanian.

Website: www.watfordcamra.org.uk

WEST LONDON Alasdair Boyd (Social Secretary)

020-7930 9871 Ext 143 (2.30 to 3.15 Mon to Fri)

banqueting@nclc.org.uk Fax: 020 7839 4768

October - Thu 2 SW1 crawl. (6pm) Wilton Arms, 71 Kinnerton St; (6.45) Nags Head, 53 Kinnerton St; (8.30) Turks Head, 10 Motcomb St. - **Mon 13** (8pm) Quiz night. Carpenters Arms (upstairs room), 12 Seymour Pl, W1. - **Tue 14** Branch meeting, Star Tavern, Belgrave Mews West, SW1. - **Thu 23/Fri 24** Socials at Twickenham Beer Festival. - **Thu 30** (7.30) Social. Talbot, 2 Little Chester St, SW1

November - Tue 11 W4 crawl. (8pm) Tabard, 2 Bath Rd; (9pm) George IV, 184 Chiswick High Rd; (10pm) Pack Horse & Talbot, 145 Chiswick High Rd. - **Mon 17** SW1 crawl. (7pm) Lord Moon of the Mall, 16/18 Whitehall; (7.45) Red Lion, 48 Parliament St; (8.30) Westminster arms, 9 Storeys Gate; (9.15) Two Chairmen, 33 Dartmouth St. - **Thu 27** Tour of Covent Garden. Meet (7pm) Harp, 47 Chandos Pl, WC2

WEST MIDDLESEX. Paul Dabrowski (Social Secretary)

020-8571-9146 (H) 0118-923 7445 (W).

October - Thu 2 (7.15) South Harrow crawl. Kingsfield Arms, Bessborough Rd; Castle, West St; White Horse and Half Moon, both Middle Rd; Timber Carriage, Northolt Rd. Approx. 45 minutes at each pub. Fuller's festival beers listed as available at White Horse. - **Thu 9-Sat 11** (8pm each night; 2004 GBG launch on Thu) New Members' Beer Festival social. Questor's Grapevine Theatre Bar, Mattock La, Ealing. - **Wed 15** (8.30) Branch meeting. Conservative Club, Fairlawn, off High St, Southall. - **Fri 24** (7pm) Social. Twickenham Beer Festival, York House, Twickenham. - **Wed 29** (8pm) Hanwell three pub social. King's Arms, Broadway; Dolphin, Lower Boston Rd; Fox, Green La. **November - Wed 12** (8.30) Branch meeting. Drayton Court Hotel, The Avenue, West Ealing W13 - **Thu 27** (8pm) London Drinker distribution. Maggie & Crown, High St, Brentford (pick up); Fox, Green La, Hanwell (drop off).

Electronic copy deadline for the December/January 2004 edition is 12th November 2003. Please send entries to geoff@coherent-tech.co.uk.

The aim of 'Capital Pubcheck' is to share information about the latest happenings on the London pub scene including new pub and bar openings, name changes, acquisitions, closures, notable changes to beer ranges etc.

Information is gathered from a variety of sources including London Drinker readers, individual CAMRA members and branch contacts, breweries, pub operators, landlords etc. If you would like to contribute to 'Pubcheck' please send your news to the address below.

The big news this time is the acquisition by a sister company to the Milton Brewery of Cambridge of a former Enterprise (ex-Whitbread) pub tucked away in a corner of Finsbury Park, dispensing Milton and other micro brewed beers together with real draught cider! The sort of real pub offering a real choice of tasty beers so rare in London but increasingly found on the fringes of our major provincial city and town centres. Generally the willingness with which many London Borough planning authorities grant permission for alternative uses, especially housing, has had the effect of inflating values of suitable pubs, putting them out of reach of genuine pub operators. A second pub in E8 Hackney has been leased by Milton and awaits refurbishment. We wish them every success and hope it encourages other micros to follow their example.

Fullers have opened a new bar in the City EC2 and we report a similar venture in the same area by the growing Lewis & Clarke chain. The Pride of Spitalfields, E1, an oasis for real ale choice, is thankfully back in business following a fire.

To qualify for inclusion as a 'pub' in *Capital Pubcheck* and CAMRA's Greater London database, the premises must serve draught beer ('real' or gas-dispensed), be open to and welcome the general public, allow drinking without requiring food to be consumed and have no admission charges (except on occasions when entertainment is provided). Hence licensed premises with no draught beer, including those described as wine bars, cocktail bars, oyster bars, tapas bars etc, restaurants with ancillary bars aimed primarily at diners, hotel bars restricted to residents and guests, and clubs with membership restrictions and/or entry fees, are not included. Closed pubs are retained on the database until converted to non-pub uses or demolished.

Cross references to CAMRA's various pub guides covering Greater London are provided to enable easy updating. The numbers in brackets after each entry refer to the page numbers in the following guides: E - East London & City Beer Guide, 3rd edition; H - Hertfordshire Guide to Real Ale, 2000 edition; HB - Holborn & Bloomsbury Pub Guide; K - Guide to Kent Pubs, 10th edition; 8K - Real Ale Guide to Kent Pubs, 8th edition; KT - Kingston Pub Guide; N - North London Beer Guide, 3rd edition; SE - South East London Pub Guide, 4th edition; 3SE - South East London Pub Guide, 3rd edition; SW - South West London Pub Guide, 2nd edition; W - Real Beer in West London; X - Essex Beer Guide, 9th edition.

If you would like to report changes to pubs or beers, please write to: Capital Pubcheck, 2 Sandtoft Road, London SE7 7LR or e-mail: capitalpubcheck@hotmail.com.

NEW & REOPENED PUBS & PUBS CONVERTED TO REAL ALE

CENTRAL

EC2, LIME, 1 Curtain Rd. No real ale. A Free House/bar and restaurant.

EC2, PROPHET, 5-12 Worship St. Adnams: Regatta; Fuller: London Pride. New Free House 'bar and kitchen' operated by the Lewis & Clarke chain based in Toddington, Bedfordshire. Opened August 2002 in former commercial premises but not previously reported. Decorated in contemporary style with polished wooden floor, bare brick and maroon painted walls, low lighting, exposed air conditioning ducts, mixture of tables, chairs, etc. Kitchen servery to side, blackboard menu with main dishes £10-£13. Downstairs function room. Open 10am-11pm Mon-Fri. Late licence to 12pm used occasionally on Thu/Fri.

EC2, TELEGRAPH, 11 Telegraph St. Fuller: Chiswick Bitter; London Pride. Seasonal beer. New spacious Fullers bar and kitchen opened late July on ground floor of new red brick clad office block, built partly on the site of the Butlers Head, a Bass (previously Ind Coope) pub demolished in 2002. Fitted out in contemporary style with mixture of tables, chairs, stools and leather sofas, low lighting from bare light bulbs and candles, exposed metallic ventilation ducts, grey and cream decor. Kitchen servery to side, food available 12-9 with table service, blackboard for daily specials. Open 11-11 Mon-Fri, closed weekends. External signage gives no indication of Fuller's ownership.

EAST

E3, MORGAN ARMS, 43 Morgan St. Adnams: Bitter. Under new management and with real ale reintroduced. Sensitive refurbishment with coloured window glass top lights retained together with varnished wooden bar back, whilst exposed

floorboards, ill-matched furniture and modern décor represent contemporary pub practice. Emphasis on food but not to the exclusion of the casual drinker. Formerly PLAYWRIGHTS for a while. (E92, U75, U79, U159)

DAGENHAM, HEATHENDERS, Crowlands Heath Golf Club, Wood Lane. No real ale. Free House/bar and restaurant attached to golf club open to general public.

NORTH WEST

NW2, GREEN (THE), 110 Walm Lane. No real ale. New Free House/bar and restaurant opened in November 2002 by London Gastropub Co in part of Conservative Club building.

NW6, BRONDES AGE, 328 Kilburn High Rd. No real ale. Free House/bar and restaurant in former shop premises.

NW6, NORTH LONDON TAVERN, 375 Kilburn High Rd. Fuller: London Pride. Reinstatement of real ale. (N205, U157)

NW6, OLD BELL, 38 Kilburn High Rd. Courage: Best Bitter. Now part of Smith & Jones Free House chain, ex-Taylor Walker. (N205)

NW6, Zd BAR, 289 Kilburn High Rd. No real ale. Free House/bar in former restaurant premises.

SOUTH EAST

SE8, LIVE, 41/42 Deptford Broadway. No real ale. New Free House bar/café/gallery opened May 2003 in former bank premises.

SOUTH WEST

SW1(W), MILLBANK LOUNGE, CITY INN HOTEL, 30 John Islip St. First floor bar inside new hotel, open to general public. Sells Caledonian Deuchars IPA from small tap under bar – real ale status uncertain.

SW2, WAGGON & HORSES, 206 Lyham Rd. Courage: Best Bitter. Reopened as a pub. Plans to convert to offices were not executed. Delete report of conversion in U167. (SW54, U153)

SW12, BALHAM KITCHEN & BAR, 15-19 Bedford Hill. No real ale. New Free House/bar in former restaurant premises.

SW19, PIANO LOUNGE, 190 Merton High St. No real ale. New Free House/bar and restaurant opened May 2003 in former off-licence premises. Sells keg Pilsner Urquell at £3.60/pint.

SW19, ROYAL SIX BELLS, 222 High St, Colliers Wood. Reopened and renamed **RIVERSIDE**. Shepherd Neame: Spitfire (£2.60/pint). Jazz theme. (SW119, U142, U170)

WEST

W2, CLEVELAND ARMS, 28 Chilworth St. Reopened. Draught Bass; Fuller: London Pride; Greene King: IPA. (W58, U93, U107, U162)

The FOX



Green Lane Olde Hanwell London W7

Tel 020 8567 3912

- Timothy Taylors Landlord is our regular ale alongside London Pride and Brakspears. Plus ever changing Guest Ales
- Maggie's cooked food
- Contained pub garden
- 100 yards from Grand Union Canal
- Open 11am-11pm
Sundays 12-10.30pm

COMING UP...
Archers Golden Bitter,
Farmer's Boy,
King George V and Joker.

**AND FROM EARLY
NOVEMBER THE
COASTAL TOUR...**
**Featuring beers from small
independent breweries
around the coast of the
British Isles.**

W2, McCAHILL'S BAR, 2 Cleveland Terr. Fuller: London Pride. Formerly PRINCE OF WALES. (W62, U166)

W3, ROCKET, 11 Churchfield Rd. Adnams: Bitter; Fuller: London Pride. Now refurbished as a gastropub with real ales reinstated. Open 5-11 Mon, 12-11 Tue-Sat and 12-10.30 Sun.

W5, RODDY'S BAR, 4 Little Ealing Lane. No real ale. New Free House/bar in former restaurant premises.

PUBS CLOSED OR CEASED SELLING REAL ALE

EAST

E6, INN XS SPORTS BAR, Free House, closed along with the bowling alley of which it is a part. (U172)

E16, PEACOCK, ex-Bass, still closed and now derelict. (E160)

BARKING, BAR ORIGINAL, ex-Bass Leisure, H now removed. (U155)

DAGENHAM, JAKES, Free House, closed. Formerly GOODFELLOWS and JAKE & ELWOODS. (X45, U155, U164)

SOUTH HORNCURCH, CHERRY TREE, S&N, H removed. (X107)

NORTH

N2, FIVE BELLS, S&N, demolished. (N66, U106)

N7, FAVOURITE, Free House, demolished and site now occupied by temporary contractors' offices believed to be associated with the Arsenal football club development nearby. (N87, U109)

N7, LIAR MAGUIRE, Free House, demolished and absorbed in same site as the Favourite. Believed to have been renamed CLANCYS before its closure but never confirmed. Formerly QUEENS ARMS. (N90, U142)

N16, PRINCE OF WALES, 1 Allen Rd, ex-Courage, closed following arson attack, future uncertain. (N130)

N17, WATERS EDGE INN, Free House, closed and boarded up. (N137, U157, U168)

BARNET (EN5), KING WILLIAM IV, ex-Benskins, closed and due to become a pizza restaurant. (N251, H19)

NORTH WEST

NW6, BLACK LION, ex-Grand Met (Truman), no real ale and currently with its interior ripped apart despite its listed building status. (N203)

The Brewery Tap

John and Heather welcome you to the Brewery Tap.

Five rotating Cask Ales

Guests soon to appear include
Shepherd Neame Spitfire, Cottage Deltic
Diesel, and Lazy Hound, Red Rose
Brewery's Old Demdyke, Wadworth's 6X
and several from Black Sheep and now we
offer stock mild ale.

New lunchtime menu.

Genuine home-cooked food.

Traditional Sunday Roasts 12 - 3.00pm

Wednesday Night is Tapas Night

Open all permitted hours

Nostalgia Juke Box

68 High Street, Wimbledon
Village, SW19

(10 minutes from Wimbledon station)

020 8947 9331



The Oakdale Arms

London's newest real ale pub

8 hand pumps serving cask
conditioned ales from a fantastic
range of British microbreweries
with Milton Brewery Beers
always on the bar.

We also serve Real Cider, Czech
Budvar on draught and a wide
selection of Belgian and continental
beers.

"You'll be very welcome"

283 Hermitage Road
Harringay, London, N4 1NP
Nearest Tube - Seven Sisters, Manor House
Tel: 020 8800 2013
www.individualpubs.co.uk/oakdale/

NW6, BRIDGE, S&N, no real ale. Formerly BRIDGE TAVERN. (N203, U109)
NW6, COOPERS ARMS, ex-Bass, no real ale. (N204)

NW6, OLD COCK TAVERN. Now reverted to COCK TAVERN, Greene King, H removed. (N204, U117, U119)

SOUTH EAST

SE8, FARRAGOS, Free House, closed for sale. Formerly McMILLANS and was a restaurant for a short while. (SE81, U102, U113, U120, U164)

SE8, OLD MANOR HOUSE, Free House, closed. (SE82, U102)

SOUTH WEST

SW1(P), ELUSIVE CAMEL, ex-Inntrepreneur, H removed. (SW41)

SW1(P), GREYHOUND, ex-Allied (Friary Meux), closed, future uncertain. (SW41)

SW2, GEORGE IV, ex-Inntrepreneur, closed and boarded up. Some external work in progress - future uncertain.. (SW52)

SW2, TWO WOODCOCKS, Conway Taverns, closed. (SW54)

SW6, ALL BAR ONE, ex-Bass. Renamed ELK BAR, H removed. (SW65)

SW11, FRONT ROOM, Ambishus, no real ale. Formerly NEW CRAVEN and HARVEY FLOORBANGERS (BAR). (SW89, U141, U163, U171)

SW16, WILLIAM IV, Laurel (ex-Whitbread), now being demolished. (SW108, U153, U172)

SW19, KILKENNY TAVERN, ex-Inntrepreneur, H unused. (SW117, U134)

WEST

W2, FETTLER & FIRKIN, Punch, ex-Taylor Walker, closed. Formerly QUEEENS RAILWAY TAVERN. (W62, U71, U92)

W12, MAILCOACH INN, Free House, demolished. (W91, U56, U95)

SOUTHALL, BEACONSFIELD ARMS, Free House, H unused. (W140, U78, U79, U86)

OTHER CHANGES TO PUBS & BEER RANGES

CENTRAL

EC2, CROWDERS WELL, -beers listed except Greene King: IPA; +3 guest beers (eg Adnams, Hook Norton, O'Hanlon's, Jennings). Now a Free House run by Peermans Pub Co, ex-Greene King, and apparently part of a small chain including the Globe SE1 and Village, E17. (E30, U87, U131)

EC4, WILLIAMSONS TAVERN, -beers listed except Adnams: Bitter; +Draught Bass; +Fuller: London Pride. (E56, U119, U151)

EAST

E1, PRIDE OF SPITALFIELDS. Refurbished following fire damage. Retains Fuller: London Pride, ESB; +guest beers (eg Titanic, Crouch Vale). Good value lunchtime sandwiches and meals. Internal decorations include images of working canal narrow boats. (E92, U75, U159)

E11, NIGHTINGALE. Now owned by Unique, ex-Courage.

E17, COLLEGE ARMS, -beers listed; +Courage: Best Bitter. (E166, U70, U138)

RAINHAM, ALBION, -beers listed; +Courage: Best Bitter; +guest beer (eg. Young: Waggledance). (X97)

NORTH

N4, OAKDALE ARMS, 283 Hermitage Rd, -beers listed; +Milton: Jupiter (3.5%), Pegasus (4.1%), Minotaur (3.3%) or Babylon (seasonal, 4.6%); +varying guest beers from micros (eg Titanic, Tower) including at least one mild; +varying real draught ciders (eg Biddenden, Cassels and Hartland). Acquired in August by Individual Pubs, a sister company to the Milton Brewery of Milton, Cambridge from Enterprise, originally Whitbread. Large two bar pub, one with pool, the other wood panelled with a small malt whisky area offering 11 on optics and TV for sports. Refurbishment ongoing. Happy hours 5-7pm Mon-Fri, £1.70/pint. Note the use of lined glasses to ensure a full pint. A second London pub has also been leased, the Pembury Tavern, Hackney E3, currently closed and awaiting renovation. A very welcome addition to the London real ale scene and, apart from O'Hanlon's (now sold on), the first opening by a micro brewer since the short lived Banks & Taylor acquisitions in the late '80s (which coincidentally included the Pembury Tavern). A 'must' to visit for every discerning real ale drinker. Easiest route is via Victoria Line to Seven Sisters and walk or take southbound buses 259 or 279 along Seven Sisters Road approaching pub via Moreton and Templeton Rds. Open 12-11 Mon-Sat, 12.30-10.30 Sun. (N76)

BARNET (EN5), KING WILLIAM IV. Renamed PREZZOS. (N251)

BARNET (EN5), QUEENS ARMS, -beers listed except McMullen: Original, AK. Maccs' 'Smooth' now heavily promoted following rather unpleasant face lift. (N252)

NORTH WEST

NW1, QUINNS, -beers listed except Greene King: IPA; +Fuller: London Pride; +Greene King: Abbot Ale. Still has a large selection of Belgian and German bottled beers at sensible prices in unpretentious surroundings. (N173)

German Beer Fest



*Our usual fine
selection of
Draught & Bottled
Beers, German Food
& Drinking Songs
A Four Day Event!*

THURS 15th OCTOBER

FRI 16th OCTOBER

SAT 17th OCTOBER

SUN 18th OCTOBER

CAMRA South West London Pub of the Year

1992, 1994, 1996, 1998, 2000 & 2002

**A constantly changing selection of ales from
microbreweries - over 3,000 different ales to date.**

**Adnams Bitter, Hop Back Summer Lightning plus
Harveys Best always available.**

**A good selection of German bottled beer including
Wheat beers, Kolschbier and smoked malt Rauchbier.**

**Thatchers traditional cider, Belgian Beers,
Paulaner and Fruit Wines.**

Function room for hire, Quiz on Sundays.

Cask Marque quality award.



Priory Arms

a genuine free house

83 Lansdowne Way, Stockwell, SW8
(5 minutes Stockwell Tube) Tel 020 7622 1884

CAPITAL PUBCHECK - UPDATE 173

NW3, WELLS TAVERN. Now simply **WELLS (THE)**, -beers listed except Fuller: London Pride. Now a gastropub. (N191, U159)

NW6, BIDDY MULLIGANS. Renamed **SOUTHERN K**, still no real ale. Now an Aussie/Kiwi theme pub. (N203, U117)

NW6, GOOSE & GRANITE. Renamed **GOOSE**, -'Just So' Bitter; +Tetley: Bitter. Formerly **EARL DERBY**. (N204, U119)

HAREFIELD, DISRAELIS. Renamed **PICKLE JAR**. (W108, U67, U69, U73, U86, U132)

SOUTH EAST

SE1, HOLE IN THE WALL, +Battersea: Bitter. (SE21)

SOUTH WEST

SW1(P), GALLAGHER & SONS. Reverted to **PRINCE OF WALES**, -beers listed; +Adnams: Bitter; +Fuller: London Pride; +Wells: Bombardier. Now a Free House, ex-Intntrepreneur, part of the small Real London Pub chain which also includes the Hope and the Wheatsheaf, two pubs in W1 Fitzrovia. (SW41)

KINGSTON, BREWSTER. Renamed **WILLOW TREE**. Previously **HUNGRY HORSE** for a while. Address should read 16 The Triangle. (SW143, U132)

KINGSTON, TUP (KINGSTON). Now **KINGSTON TUP**. Formerly **HOG & STUMP**. (SW143, U135)

WEST

W6, DISTILLERS, -beers listed; +Wells: Bombardier. (W74, U107, U136)

HAMPTON, DUKES HEAD. Now owned by Unique, ex-Courage. (W103, U101)

SOUTHALL, RED LION, -beers listed; +Brakspear: Bitter; +Grand Union: Best (4.1%). (W143, U50, U79)

TWICKENHAM, CROWN. Now owned by Enterprise, ex-Whitbread. (W150, U77, U95, U116)

CORRECTION TO UPDATE 167

PUBS CLOSED ETC

SW2, WAGGON & HORSES. Delete entry, not converted to offices (see listings above).

CORRECTION TO UPDATE 172

NEW PUBS ETC

TEDDINGTON, TEDDINGTON ARMS. Owned by Capital Pub Co.

OTHER CHANGES ETC.

N20, GRIFFIN. Remove reference to (SCRUFFY MURPHYS) in title. All vestige of former (subsidiary) offensive name now removed.

WEST WICKHAM, OLD ANTHROPOLOGIST. Should read: Renamed **WHEATSHEAF**, formerly **WHEATSHEAF TAVERN**. Add ref. 8K181 after U55.

W4, O'NEILL'S AT MANOR TAVERN. Should read: **O'NEILL'S AT THE MANOR TAVERN**.

W5, HOGSHEAD. Ref should read (U118)

CORRECTIONS

EC4, OLD MONK. Should read **EC2, OLD MONK**

CORRECTIONS AND INFORMATION ADDITIONAL TO KINGSTON PUB GUIDE

A new CAMRA Guide covering pubs and bars within the Royal Borough of Kingston was published in June 2002. For completeness corrections, closed pubs and former names (where not already referred to) are listed below:

CHESSINGTON, BUNKERS BAR. Formerly **ACE OF SPADES**. (KT14)

CHESSINGTON, MAVERICK. Formerly **PORT OF CALL**. (KT15)

KINGSTON, DUKE TAVERN, 42 Cambridge Rd, ex-Intntrepreneur. Remains closed - future uncertain, but unlikely to reopen as a pub. (omitted)

KINGSTON, KINGSTON GATE. Formerly **BLACK HORSE**. (KT23)

KINGSTON, PORTER BLACKS. Should read **PORTER BLACK**. Address is Ram Passage and not as shown. Formerly **SHAMUS O'DONNELLS**. (KT26)

KINGSTON, RB'S SPORTS BAR. Formerly **ROYAL BARGE**. (KT26)

KINGSTON, WORKS BAR. Formerly **BAR (THE)** and **PUZZLE**. (KT29)

NEW MALDEN, BOBOS. Formerly **B WON**, originally **NEW MALDEN TAVERN**. (KT35)

SURBITON, ANGEL. Formerly **BLUE ANGEL**. (KT39)

SURBITON, BERRYLANDS. Address should read 107 Chiltern Drive. (KT39)

SURBITON, GROVE. Formerly **SEAN O'GRADYS**. (KT41)

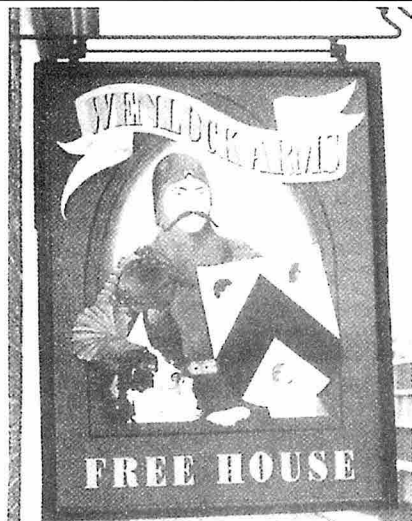
SURBITON, SAUCY KETTLE. Address should read 7-9 Brighton Rd. (KT44)

WORCESTER PARK, WORCESTER PARK. Formerly **WORCESTER TAVERN**. (KT46)

CHANGES IN WATFORD

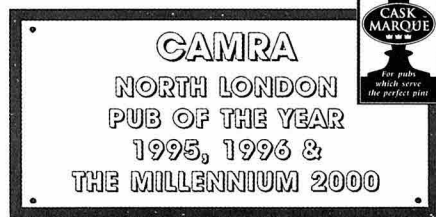
RAT AND PARROT, High St and **BAR RISA**, The Parade are closed and undergoing refurbishment.

PUB ON THE CORNER, Queens Rd. (GBG InnBrief). Name changed to **MAD GEORGE**. Real ale not always available.



A genuine Free House featuring a selection of the very best in Cask Ales, Traditional Cider and Perry

- Mild always available
- La Trappe Trappist ale & Bitburger Pils both on draught
- Function room free to CAMRA members
- Thursday night is Quiz Night
- Jazz piano Sunday afternoons
- Jazz/Blues every Friday and Saturday evening
- Open daily from midday



**26 Wenlock Road
London N1**

020 7608 3406

Nearest Tube stations are Old Street (exit 1) and Angel. Wenlock Road is off City Road via Windsor Terrace
<http://www.wenlock-arms.co.uk/>

CASK MARQUE UPDATE

Changes notified since July to the comprehensive list of Cask Marque pubs and clubs in Greater London published in the April/May 2003 edition of London Drinker are listed below.

ADDITIONS

CENTRAL

W1 (May), **KINGS ARMS**, 2 Shepherd Market. S&N. (W39, U95, U106, U115)
W1(S), **SHAKESPEARES HEAD**, 29 Great Marlborough St. S&N. (W44, U80, U90, U106)

EAST

E8, **BAXTERS COURT**, 282/284 Mare St. Wetherspoon. (U170)
E11, **NIGHTINGALE**, 51 Nightingale Lane. Unique. (E129, U173)

WEST

W5, **HOG'S HEAD**, 46/47 The Mall. Laurel. (U118, U172)
HAMPTON, DUKES HEAD, 122 High St. Unique. (W103, U101, U173)
HEATHROW AIRPORT, SKYLARK, Terminal 1 (Landside). Wetherspoon, formerly HARRY RAMSDENS. (U65, U126, U159)
ISLEWORTH, RED LION, 92/94 Linkfield Rd. Free House. (W131, U60, U62, U101, U165)
TWICKENHAM, CROWN, 174 Richmond Rd. Enterprise. (W150, U77, U95, U116, U173)
TWICKENHAM, FOX, 39 Church St. Unique. (W150, U57, U71, U98, U168)

Over 2,300 licensees have the Cask Marque award. The beer in their outlets has been independently inspected for beer quality.

Visit the Cask Marque Website

www.cask-marque.co.uk

and download a regional guide.

Why not visit a brewery?

www.visitabrewery.co.uk

Cask Marque - for the licensee who serves the 'perfect pint' of cask beer.

**The Cask Marque Trust
Seedbed Centre,
Severalls Park, Colchester,
Essex CO4 9HT
Tel: 01206 752212**



STRENGTH IN NUMBERS

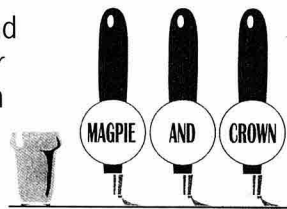
The Campaign for Real Ale is a not-for-profit consumer group that supports all pub goers and real ale drinkers. Increasing membership is a key part of our continued growth as an organisation, both in terms of funding and in terms of our campaigning 'voice'. CAMRA serves different purposes for different people - some enjoy being active campaigners while others are happy just to support CAMRA through their membership subscription. Either way, CAMRA membership helps save British beer and pubs and appeals to many different groups of society - young and old, male and female, different religions and races. CAMRA is not just a consumer group for middle aged men with bellies and beards - a stereotype that can easily be dispelled when you realise that in April 2003 CAMRA appointed its first ever woman chairman and that 30% of the membership is female.

CAMRA membership is available and relevant to all pub goers and real ale drinkers. Current membership is approaching 70,000 but, if we are to increase our campaigning power and raise the finances to achieve more victories for consumers, more members are needed now. So if you are interested in real ale, cider or perry and want to support the campaign for greater consumer choice as well as helping to safeguard the future of British beer and pubs then look no further - join CAMRA today. Fill in the CAMRA membership application form below and send it to 230 Hatfield Road, St Albans, AL1 4LW, or else join online at www.camra.org.uk. Cheers!

THE MAGPIE & CROWN

128 High Street, Brentford, Middx Tel 020 8560 4570

- 4 ever changing guest ales from £2.05 per pint
 - Traditional Cider & Perry
 - Draught Budvar, Affligem, Hoegaarden and also for the first time in the UK...
Paulaner Münchener Lager and Paulaner Bavarian Wheat Beer
 - Foreign bottled beer selection
 - CAMRA Good Beer Guide
 - Open all permitted hours
- Come and See Us Soon!



APPLICATION TO JOIN CAMRA

I/We wish to become members of the Campaign for Real Ale Limited and agree to abide by the Memorandum and Articles of Association of the Campaign.

Name(s) _____

Address _____

Postcode _____

Signature _____ Date _____

I/We enclose the remittance for individual/joint membership.

	Individual Annual	Joint Annual	Individual Life	Joint Life
UK and EEC	£16 <input type="checkbox"/>	£19 <input type="checkbox"/>	£192 <input type="checkbox"/>	£228 <input type="checkbox"/>
Rest of the World	£20 <input type="checkbox"/>	£23 <input type="checkbox"/>	£240 <input type="checkbox"/>	£276 <input type="checkbox"/>
Under age 26	£9 <input type="checkbox"/>	Date of birth _____		
Unemployed/Disabled	£9 <input type="checkbox"/>			
OAP	£9 <input type="checkbox"/>	£12 <input type="checkbox"/>	£108 <input type="checkbox"/>	£144 <input type="checkbox"/>

Send your remittance (payable to CAMRA Ltd) to:
Membership Secretary, CAMRA Ltd, 230 Hatfield Road, St Albans, Herts AL1 4LW



WHATEVER
YOU DO,
TAKE PRIDE.



LITERARY PUBS OF LONDON - PART 1

Imagine the three B's: books, beer, and bards joined together convivially in that mainstay of English society, the pub. According to a sign in the London Underground, there are 3,700 pubs in the London area. A visitor to London as well as the resident happily can find his favorite author has associations with one pub or many. With a little planning and the will to scout out these pubs, one can 'rub elbows with' the mighty, as many pubs still savour their links to the literary world.

So many writers of all kinds - drama, nonfiction, novels, poetry, screenplays - have sought inspiration and fame in London from centuries past to the present that pubs either frequented by them, named after them, or inspired by their characters can be found all over London and its surrounding area. The industrious patron, who is willing to use the Underground system and a good map or A-Z Street Atlas and Index, can frequent several in one day by concentrating on those in one area of the vast city. Most pubs given here have their own web site or are listed on at least one pub search website.

Many of the pubs in this article are listed in the Good Beer Guide. Several are also listed in the Good Pub Guide. Therefore, the beer and the quality of the food will be high. However, many of the pubs in the City of London close early (The Mitre closes at 10pm, an hour before most other pubs in other areas), and some are closed on Sunday, so check before going, if possible. Be aware that the information was accurate when this article was written; however, the beers listed may have changed. For up-to-date draughts, call before going; telephone numbers have been provided for nearly all the pubs.

Perhaps the best idea is to start in Central London, using the Tube to get around. The first stop is a sixteenth century pub, Ye Olde Mitre Tavern (1 Ely Court, Ely Place (off Hatton Garden), Farringdon, EC1, Farringdon Tube); (020-7405 4751)) that is, strangely enough, not in London at all but in Cambridgeshire, technically speaking. Unlike many other pubs, this one has no music, clanking machines, or cocktails, just beer, wine, and conversation. CAMRA calls it a gem of a pub, and it is. It's a neighbour to St. Etheldreda's Chapel, the old headquarters of the Bishops of Ely, Cambridgeshire, whose strawberries are mentioned in Shakespeare's Richard III (III.iv); Shakespeare also set a scene in Richard II (I.1) in Ely House. Hence, the name of the pub, which has a stone mitre from the

bishops' gatehouse in the wall, according to the literature handed out by the friendly bar staff. Samuel Johnson drank here, and today's City customers feel at home in the two rooms served by the same bar. Burton Ale, Adnams, Tetley, and Bass were available when I visited. It's open Mon.-Fri., 11:00-23:00, closed weekends, so plan your visit accordingly.

Ye Olde Cheshire Cheese (Wine Office Court, off 145 Fleet St., City of London, EC4, Blackfriars Tube); (020- 7353 6170) is a venerable and famous pub. So many authors have drunk here that the list can go on and on: Congreve, Pope, Voltaire, Thackeray, Dickens, Yeats, and probably Johnson and Boswell, to name a few. There is nothing pretentious or beautiful here: just a fundamental drinking establishment, so soak in the literary history while you're there. Opening hours are Mon.-Sat., 11:30-23:00; Sun., 12:00-15:00.

Another historic pub, Ye Olde Cock Tavern (22 Fleet St., EC4, Temple Tube); (020-7333 8570), was frequently by Pepys, Dickens, and Tennyson. Be aware that the pub has been modernized with a wood floor, carpeting in some areas, and leather furniture upstairs. One pub website, pub.com, claims, 'Recent refurbishment has changed the Cock's character and it is no longer recommended as a venue. As a reminder of Alfred, Lord Tennyson's visits are framed editions of 'Will Klatzerproof's Lyrical Monologue' and 'A Pint of Generous Port', which the poet wrote in this pub. Closed on weekends, it boasts Courage Best and Directors on draught.

London is a city full of cultural opportunities. What better chance to combine culture and good beer than to visit two pubs after visiting the British Museum and the Tate Gallery? Across from the British Museum is the Museum Tavern (49 Great Russell St., Bloomsbury, WC1, Russell Sq. Tube); (020-7242 8987), once known as the Dog and Duck until hunting became less popular as the city limits grew. Among authors who have frequented this pub are John Maynard Keynes, Virginia Woolf, Oscar Wilde, and Karl Marx, who wrote *Das Kapital* in the museum's Reading Room. Conan Doyle used the pub in one of his Sherlock Holmes stories, calling it the 'Alpha Inn, near the Museum . . . a small public house at the corner of one of the streets which runs down to Holborn.' With its lovely Victorian fittings, you can imagine Sherlock Holmes and Dr. Watson contemplating 'The Adventure of the Blue

LITERARY PUBS OF LONDON - PART 1

Carbuncle.' Now a Scottish and Newcastle Breweries pub, the Museum Tavern will sell you a pamphlet for £1 that tells its history.

After visiting the Tate Gallery, drop into the nearby pub the Morpeth Arms (58 Millbank, SW1, Pimlico Tube); (020-7834 6442). The well-known Young's pub has an interesting history. Both the pub and the Tate were the site of a huge penitentiary for convicts of both sexes to be transported to Australia. The pub cellar connected the prison via tunnel to the convict ships on the Thames. Among authors connected with the pub in happier times are Charles Dickens, Henry James, and John Ruskin, unaware of the ghost which supposedly haunts the cellar. All of these authors showed concern about the prison, Dickens in *David Copperfield*; James in *The Princess Casamassima*; Ruskin lectured in favour of a National Gallery on the site of the destroyed prison. Today's customers enjoy the good food and excellent Young's beers available at the pub, mainly ignorant of its past.

A not-to-miss pub is The Sherlock Holmes (10 Northumberland St., WC1, Charing Cross Tube); (020-7930 2644), a short walk from Nelson's statue at Trafalgar Square. It was the Northumberland Hotel, where Sir Arthur Conan Doyle wrote many of the Sherlock Holmes detective stories. In 'The Hound of the Baskervilles,' Henry Baskerville visited Holmes at the pub. Its web site is: www.sherlockholmespub.homestead.com

Upstairs is a replica of Holmes's Baker Street sitting room, complete with bullet holes in the mantle. It has a restaurant upstairs, although the pub grub downstairs is good. Take time to read the articles and look at the information and pictures on the wall, which pay homage to the world's most famous detective. Expect to pay Central London prices for both beer, such as Flowers IPA and Old Speckled Hen, and food here; pubs on the outskirts of London tend to be less expensive.

Now a National Trust property, The George Inn (77 Borough High St., Southwark SE1, Borough or London Bridge Tube); (020-7407 2056)), is an old coaching inn with various rooms to wander through. The rooms themselves are named for the area made famous by Chaucer in his *Canterbury Tales*; Southwark Bar, near Tabard, is an example. That man-about-town, Charles Dickens, drank here, as did Shakespeare, according to the information at the pub. The existing building was built in 1677, after the

original building was torn down. Unlike many other pubs, there is a nonsmoking area during the hours of food service: 12:00-3:00, Monday through Friday; 12:00-4:00 Saturday and Sunday. Wine is served in splits rather than by the glass, as it is in most other pubs. George in the pub name is Saint George, the patron saint of England, not one of the King Georges. When I visited, Batemans was the guest beer; Jewel in the Crown was on draught.

If you like to do something different from the regular London sights, try a Tube ride to Chiswick, where the Fuller's Brewery is located. The tours meet at the Mawson Arms (Mawson Lane, Chiswick W4, Turnham Green Tube); (020-8994 2936) at the corner of the brewery. (The Griffin Brewery, Chiswick Lane South, London W4 2QB; tour times are Monday, Wednesday, Thursday and Friday at 10 and 11am. and 1 and 2pm, lasting one and a half hours; the fee is £4 for an adult ticket, with a £1 voucher redeemable at the Mawson Arms; check the Fuller's website at www.fullers.co.uk to be sure this is accurate.) The pub is located in Alexander Pope's old house. Don't expect much information or décor relating to Pope, however. The 15-minute walk from the Tube station to the pub will acquaint you with local shops, housing, and a look at the way residents live. Walk along the river while you're in the area; it has a different feel out of Central London.

Another connection to Alexander Pope can be found at a modern pub in a London suburb. Pope's Grotto (Cross Deep at Pope's Grove, Twickenham; Strawberry Hill rail); (020-8892 3050) is a Young's pub and 32-room hotel. Air-conditioned, a bonus on hot summer days, the pub is spacious and comfortable, with modern furnishings, a wide range of food served along with Young's beers, and quiz nights. Jazz was offered on selected summer evenings. Although the building is modern and has few obvious links to Pope, with a bit of investigation the customer can learn the reason for its name. The poet Alexander Pope lived in a villa on the Thames across the street from this location. He built a grotto originally lined with shells and mirror pieces and later stalactites and marble, the remains of which can be found in the basement of St. James Independent School for Boys; a plaque on the school building identifies this.

To be continued

© Judith Black



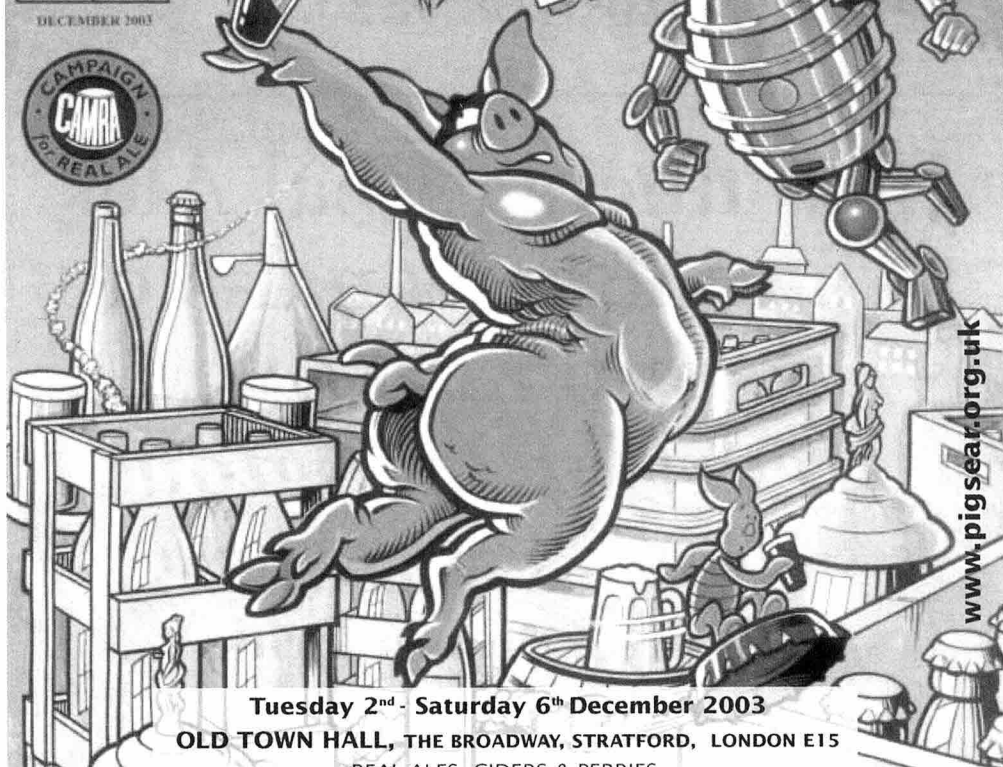
MARVELLOUS

PIG No22

DECEMBER 2003



the TWENTY SECOND PIGSEAR BEER FESTIVAL



www.pigsear.org.uk

Tuesday 2nd - Saturday 6th December 2003

OLD TOWN HALL, THE BROADWAY, STRATFORD, LONDON E15

REAL ALES, CIDERS & PERRIES,
FOREIGN AND BOTTLE CONDITIONED BEERS, SOFT DRINKS

Tuesday: 4pm - 11pm Wednesday - Saturday: 11am - 11pm

FREE CRECHE - Saturday Noon - 5pm

Admission: Tuesday - Thursday after 4pm £2.00

Friday after 3pm £3.00 Saturday £2.00 all day

All other times admission FREE

CARD CARRYING CAMRA MEMBERS: Weds & Thurs after 4pm,

Friday after 3pm £1.00 Other times free

Pigs Ear is once again a MUSIC FREE FESTIVAL






THE NARROWBOAT

St Peter Street, London N1

020 7288 9820



Introducing Real Ales
to a unique canal-side
pub in the
Heart of Islington

Ales available:
Fuller's London Pride
Fuller's Honeydew
Young's Special
Barnsley Bitter
See you soon!!!

RAMBLING FOR ALE LOVERS

Ian Pearson and Lynne Abbott, CAMRA members and recently escaped residents of East Ham, have branched out into a new walk of life by launching 'Real Ale Walks'. Based in the Quantock Hills in West Somerset, Ian and Lynne guide walkers to a selection of the 20 or so real ale pubs within walking distance of the Old Cider House, their Edwardian property in Nether Stowey that has been converted into a guesthouse.

The 'rambling and real ale' walk involve a chance to sample some of the brews from local breweries such as Exmoor, Cotleigh, and lesser known ones like Moor, Juward's and Berrow. Food and beer tastings are included in the price of the walks, which last 2 or 5 days, and cider lovers are also well catered for. More information is available on www.ramblingroads.co.uk or tel. 01278 732228.

NATIONAL PUBS WEEK TO RETURN

After the success of the first National Pubs Week, which took place at the end of February 2003, CAMRA has announced that this will now become an annual event to promote all types of British pub. National Pubs Week 2004 will take place between Saturday 21st February and Sunday 29th February.

IDLE MOMENTS

AUGUST'S ANSWERS

As promised, here are the solutions to the puzzles set in August's Idle Moments column.

NUMBER PUZZLES:

1. Side on a M'bius Strip
2. Everly Brothers (Phil & Don)
3. Stars in the Belt of Orion
4. Bishops on a Chess Board
5. Points on a Pentagon
6. Firkins in a Hogshead
7. Little Girls Sitting in the Back Seat (Hugging and Kissing with Fred)
8. Wheels on a Railway Carriage
9. Square Feet in a Square Yard
10. Pounds is the Prize for the London Drinker Crossword

BREWERY ANAGRAMS:

1. SWAY ANT - STANWAY
2. HARD CLEATS - CATHEDRAL'S
3. HAH! SHEER MIX - HEXHAMSHIRE
4. STAGE ARM - RAMSGATE
5. SCUM BRAIN - CAMBRINUS
6. MY OWL FEAR - MAYFLOWER
7. CARING ROM - CAIRNGORM
8. FLOWERY BED FIXER - FOXFIELD
BREWERY

8th HENLOW BEER FESTIVAL

Wednesday 15th to Wednesday 22nd October

All day every day from 12 noon

Summer's over - re-tox at Henlow!

Over 50 real ales
plus cider and perry

Live entertainment

Saturday: Dr Busker

Sunday eve: Homebrew

Rolls and hot pies
Pig roast Saturday 8pm

For more information, call Kevin or Claire on 01462 812284

Email claire.sturgeon@btinternet.com or visit our website at www.engineersarms.co.uk

The Engineers Arms, 68 High Street, Henlow, Beds
Bedfordshire CAMRA's Pub of the Year 2002 and 2003

Arlesey rail station 10min • buses 171, 172, 181, 191, 200 pass the pub

9. WE HOOT SUN - TOWN HOUSE
10. TOLD KEN - OLD KENT

5BY4:

The more observant 99.999% of you will have noticed that last time's cock-up was my failure to omit the second names that you were supposed to guess from the middle of the presidents' names, so I don't propose to repeat them here. Still, I suppose you could have used it to look clever in front of your friends. But on the other hand - if you've got friends, why are you reading this rubbish?

GENERAL KNOWLEDGE:

1. The World's first criminal to be arrested by the use of radio telegraphy was Dr. Crippen.
2. The British car manufacturer which started life as The Swallow Sidecar Company was Jaguar.
3. After his Bentley company was taken over by Rolls Royce, W.O. Bentley went to work for Lagonda.
4. Bob Hope who recently celebrated his 100th birthday (and died just after the last LD came out), lived most of his life in the USA but was born in Eltham.
5. Once it was British Railways, then British Rail; now it just runs the tracks while other operators run the trains. It is currently called Network Rail.

IDLE MOMENTS

6. The full name of the material which bears the trade name "Teflon" is polytetrafluoroethylene
7. The American singer who works with a backing group called "The Blue Moon Orchestra" is Nanci Griffith
8. The English city which was named by the Romans as Aquae Sulis is Bath.
9. And the town in the same general area named Corinium is Cirencester.
10. In J.M.Barrie's Peter Pan, the dying words of Captain Hook which indicated where he was educated (or claimed to be) were Floreat Etona.

I can't imagine why I call this "Idle Moments", what with this and a beer festival to get sorted out (plug), the last thing I get is an idle moment. Still enough of my moaning, let's have a quick quotation and then on with the serious drudgery - this time I have chosen one on the subject of progress by Will Rogers (1879-1935):

You can't say civilization don't advance, however, for in every war they kill you in a new way.

Right, number puzzle time - here goes:

1. 8 L on an AT
2. 6 is BT and T on a DB
3. 49 is SS
4. 9 P in the SS
5. 20 H in a T
6. 3 N in a T
7. 10 C in a F
8. 7 S on a FPP
9. 4 K of E were CW
10. 2 BT in a SS

And as I'm already late, let's get straight on with the brewery anagrams:

1. FIE! KEY LOSS
2. DAMN HOG MAO
3. CERN ACTION
4. WED BIG ROD
5. PA CROW
6. ITS CHIP
7. CALL BIKES
8. SANTA'S WOODEN ADDERS
9. HARM PEE
10. WIN RAD

This time I thought I'd call 5BY4 by the subtitle "Anoraks Only." I was on a canal cruise last week and one evening in a pub in Swindon (There is in this Swindon!) We found an interesting collection of books; one of them was called something like "What It Does And How It Works" - it must have been published in about 1936-7 and in it I chanced upon this table. Now we all know that railway engines with a wheel arrangement 4-6-2 are called "Pacifics", but can you match these other ten names to their wheel arrangements?

1. Prairie
2. Baltic
3. Mikado
4. Mogul
5. Centipede

6. Mastodon
7. Mountain
8. Consolidation
9. Atlantic
10. Decapod
- A. 2-6-2
- B. 4-4-2
- C. 4-6-4
- D. 0-12-0
- E. 0-10-0
- F. 2-6-0
- G. 4-8-0
- H. 4-8-2
- I. 2-8-2
- J. 2-8-0

No, neither could I without that book. Anyway, it's now time to finish with the general knowledge questions:

1. By what name is acetylsalicylic better known?
2. And still on the subject of acids, what is the acid which breaks down the food in your stomach?
3. Who wrote the novel "Keep the Aspidistra Flying"?
4. What was the parenthetic middle name of Clarence "?" Henry who had top ten hits in 1961 with "But I Do" and "You Always Hurt the One You Love"?
5. Ian Matthews of Matthews Southern Comfort was formerly a member of which British folk rock band?
6. And who was Ian Matthews girlfriend at the time, who wrote their No. 1 hit of 1970, Woodstock?
7. By what name is the insect Pulex Irritans commonly known?
8. What name is shared by a sculpture by Auguste Rodin and a painting by Gustav Klimt?
9. And talking of sculpture, where would you find the "Venus de Milo"?
10. And again on sculpture, who was the sculptor of the "Angel of the North" which overlooks the A1 in Gateshead?

And with that I shall bid you farewell and get this emailed off to the printer.

Toodle-oo
Andy Pirson



THE WILLOUGHBY ARMS



Proudly Presents
It's Annual

HALLOWEEN



Beer & Cider Festival



Featuring over 30 Traditional Beers & Ciders-SIMULTANEOUSLY
from Thursday 30th. October til' Sunday 2nd. November.

In support of CAMRA's Cider Month we shall host
10 traditional ciders from Saturday 25th October.
-with Kingston branch social!

DISCOUNT
"ALE TRAIL"
CARDS

FOOD
THROUGHOUT

FESTIVAL
T-SHIRTS!

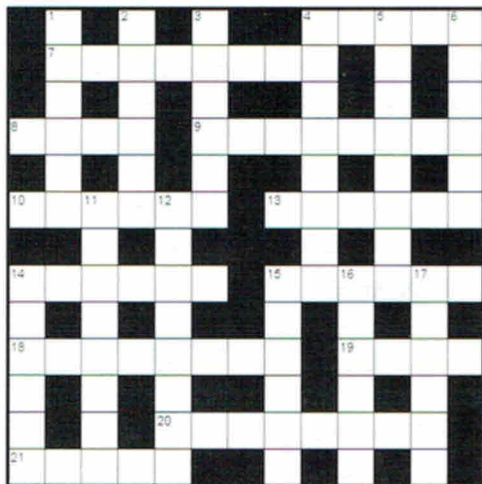
Live Music Fri & Sat evenings
& Halloween Quiz on Sunday @ 9pm

47, Willoughby Road
Kingston upon Thames
Surrey KT2 6LN

For further details call 020 8546 4236
or visit www.thewilloughbyarms.com

LONDON DRINKER CROSSWORD

Compiled by DAVE QUINTON



Name _____

Address _____

All correct entries received by first post on 26th November will be entered into a draw for the prize.

Prize winner will be announced in the February London Drinker.

The solution will be given in the December edition.

All entries to be submitted to:

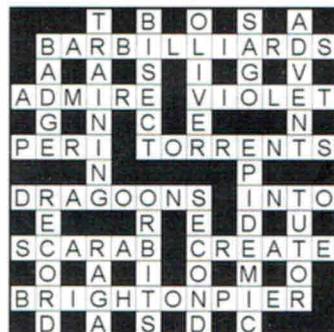
London Drinker Crossword

25 Valens House

Upper Tulse Hill

London SW2 2RX

SOLUTION TO AUGUST CROSSWORD



£10 PRIZE TO BE WON

ACROSS

4. Try leaving manufacturers to produce flower. [5]
7. Help with tree boring. [5,3]
8. Rule without good control. [4]
9. To march around is heaven. [8]
10. Stick poster in this place. [6]
13. In the end it's mostly good beer. [6]
14. Fight against the distress of a relative. [6]
15. Master diverted rivulet. [6]
18. Teaches alien to make toy. [5,3]
19. Lived in the flower power era. [4]
20. Going on to fill with delight. [8]
21. Relieved, though greatly irritated. [5]

DOWN

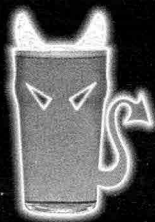
1. Cricket side aim to cause upset. [6]
2. Toll bell in church and bow down. [6]
3. Changed plates for this diet. [6]
4. Thought to be over lean, he wants perfection. [8]
5. Propose changing head master. [8]
6. It may be followed by a blessing. [6]
11. Armies with time for prisoners. [8]
12. Didn't appreciate being posted into plant. [8]
14. Stop work and go to bed. [6]
15. God perched on vessel. [6]
16. Falling out during boat race? [6]
17. Song people put together for pilots. [6]

Winner of the prize for the June Crossword:

Nick Stone, Leatherhead, Surrey

Other correct entries were received from:

Tony Alpe, Pat Andrews, Geoff B, Rob Barker, Jeremy Brinkworth, Eddie Carr, Brendan Casey, Chris Fran & a spotted dog, John Cole, C.Creasey, Paul Curson, Robert Day, Richard & Clever Clogs Douthwaite, Arthur Fox-Ache, Eileen Graves, Paul Gray, J.E.Green, Tarnya Haigh, Jonty Hawkes, John Heath, Billie Hernon, Graham Hill, William Hill, Sheerluck Holmes, Tom Kemp, Pete Large, Mike McHugh, K.I.May, M.J.Moran, Yuri Nashun, Rob Neill, Mick Norman, Michael Perkin, Postie Gorilla & Blackpool, Derek Pryce, Geoff S, Bryan Smith, Lesley Smith, Betty Swallocks, Ken Taylor, Bill Thackray, Paul Tiffany, Tony Watkins, Martin Weedon, Ian Whiteman, Sue Wilson.



SEE NO EVIL

HEAR NO EVIL

SPEAK NO EVIL

TASTE NO EVIL

UP TO 35 GUEST
ALES AVAILABLE

AT THE WETHERSPOON
BEER FESTIVAL

**Wednesday 29 October
to Sunday 2 November**

(central London pubs Monday 27 to Friday 31 October)

Visit our Web site for your local
J D Wetherspoon pub.

www.jdwetherspoon.co.uk



**Festival
Ale**

99p
per pint

WITH THIS VOUCHER

Available to CPMR members only. One voucher per person. This voucher is valid Wednesday 29 October to Sunday 2 November
(central London pubs Monday 27 to Friday 31 October). Subject to availability. Participating freehouses. Photocopies will not be accepted. Over 18s only.

When the weather's getting cooler
and the nights are drawing in
when autumn leaves start falling
this means just one thing

Autumn Seer



**THE
Autumnal
Ale
from**

Hogs Back

Hogs Back Brewery Ltd

Manor Farm, The Street, Tongham, Surrey GU10 1DE

Tel 01252 783000 www.hogsback.co.uk