

GREAT BRITISH BEER FESTIVAL

2003

5-9
AUGUST

LONDON
OLYMPIA



crowd pullers



9 beers that we take exceptional pride in brewing, 3 stouts, 3 ales and 3 lagers. Hand-crafted in small batches using modern technology whilst respecting the ancient art of brewing. The Porterhouse brews some of the finest beers in the world using only malt, hops, water, yeast, no chemicals and unpasteurised.

Many others say similar but we simply don't believe them.

We pride ourselves on the quality and unique taste of the stouts and beers we brew, so much so that Porterhouse stouts and beers are only available in a Porterhouse Pub, this ensures quality from grain to glass.

3 great stouts, 3 ales, 3 lagers & specials all on the premises. Including one of the largest selection of bottled beers. Only available in Temple Bar Dublin, Bray and Covent Garden London.

The Porterhouse Maiden Lane, Covent Garden
 tel. 0207 7836 9931 fax 0207 7379 7991
www.porterhousebrewco.com





London Drinker is published by Mike Hammersley on behalf of the London Branches of CAMRA, the Campaign for Real Ale Limited, and edited by Geoff Strawbridge.

Material for publication should preferably be sent by e-mail to geoff@coherent-tech.co.uk.

Letters by post may be sent to Robin Forshaw-Wilson, 16 Sunningfields Crescent, Hendon, NW4 4RD.

Press releases should be sent to Dave Lee, 60 Fossil Rd, Lewisham, SE13 7DE.

Changes to pubs or beers should be reported to Capital Pubcheck, 2 Sandtoft Road, London SE7 7LR or by e-mail to capitalpubcheck@hotmail.com.

For publication in October 2003, please send electronic documents to the Editor no later than Wednesday 10 September.

SUBSCRIPTIONS: £3.00 for mailing of 6 editions should be sent to Stan Tompkins, 122 Manor Way, Uxbridge, Middlesex, UB8 2BH (cheques payable to CAMRA London).

ADVERTISING: Peter Tonge; Tel: 020-8300 7693.

Printed by Cliffe Enterprise, Lewes, East Sussex.

EDITORIAL

THE PERFECT PUB

In 1947 George Orwell, in an article written for the *Evening Standard*, describes his epitome of the perfect pub. For this pub of perfection he came up with the amazing name of 'The Moon Under Water'. Strangely enough, fifty-six years later I have to say the same, my perfect pub is also called 'The Moon Under Water' and it is in Hounslow.

Orwell's conception of a perfect pub is somewhat different from mine. I am looking for 'Real Ale' served in the best possible way with the best variety of ales as is possible. Another major criterion for me is the price.

Most Wetherspoons' outlets in Greater London are charging £1.59 per pint for guest ales; the Hounslow and Feltham outlets charge £1.55. These two pubs are unique in the fact that 'Monday Club' refers only to guest ales which are served at £1.39 a pint on that day. On a Monday night one can look forward to six guest ales as opposed to the customary three or four served through the week.

There is a list of forthcoming ales available each quarter and all fifty or so of these beers will be available during that period. At the 'Moon' in Hounslow we are fortunate, for in addition to that wide selection we also have beers from Arundel, Cottage and Itchen breweries interspersed amongst them. For those unsure of guest ales the pub offers Abbot, Courage Best and Directors as well as Hop Back Summer Lightning.

During the week the pub is open for the consumption of alcohol from 10.00am, the other two days normal times. Next time you are in the Hounslow area, do come and try the pub's selection of guest ales. You can be assured of a great welcome from licensee Peter Johnson and his staff. It is my epitome of the perfect pub; maybe it could be yours.

Denys Vernall

CALL TIME ON PUB CLOSURES

The closure of local pubs is reaching crisis point. In my own area of East Finchley we have just lost our 5th pub in six years. Shouldn't the Government and Councils now call 'time' on the further closures of small local pubs? To many people their local is like a club and its loss leaves a big void. The problems of the disappearing village pub are well known. The 2001 report by the Countryside Agency stated that 'more than half of England's villages are without a reliable source of cheap drink for the first time since the Norman Conquest'. However, London local pubs are now also disappearing at a very fast rate.

The closure of locals is similar to the situation with local shops and has many of the same reasons - encroachment by big business and their favourable treatment in government policy, weak planning controls and

Views expressed in this publication are those of their individual authors and are not necessarily endorsed by the Editor or the Campaign for Real Ale Limited.

IN THIS ISSUE

National news	7
Local round-up	10
GBBF	13
Punch Taverns	16
Your rights	18
Letters	20
Branch diaries	21
Capital Pubcheck	23
Membership form	25
Kilburn	34
The Northern Line	38
Idle Moments	40
Crossword	42

The Red Lion
1 Mill Lane,
Godalming,
Surrey
01483 415207



Which of these beers did you miss?

Highgate Bitter, Banana Bread Beer,
 Horsham 'Best', Judge Jeffreys, 'Cavalier',
 King's 'Red River Ale', County of Wiltshire,
 Country Life 'Ambrosia', Martha's Mild,
 Old Moggie, XTC, Holts 'Edwards Amber',
 Fullers 'Honey Dew', King's 'Spring Ale',
 Pride of Romsey, Manneken, Hard Willie,
 Meat & 2 Veg, King's 'Summer Ale',
 Brakspears 'Bee Sting', Batemans 'Hubble
 Bubble', Hogs Back 'Mild & Spring Call',
 Horsham 'Mild', Mulcocks Lager, Country
 Bumpkin, Tom Paine, King Duck, Crop
 Circle, Druid's Draught, Merry Go Round,
 Mid Summer Sun, Seaside Special, Station
 Master's Tipple, Stoker's Thirst Quench,
 Summer This, Heel Stone, Great Dane,
 Second to None, Summer Breeze, Gold
 Extra, Lloyd's 'Summer Gold', Staffordshire
 Boy, High Flyer, '04 Ale', Summer
 Whipling, Cross Fire, Blond Witch,
 Haymaker, High Jinks, Stars & Stripes,
 Fursty Ferret, Maiden Leg Over, Triple Hop,
 Dorothy Goodbody's 'Golden Ale',
 Batemans 'Marie Celeste', Robinsons
 'Northern Glory', Okells 'MacLir', Pooh
 Bear.

We support small independent
brewers, do you?

**"The only family owned and run
Freehouse in Town"**

Open all day, every day

CAMRA Good Beer Guide
 1994/5/6/7/8/9/2000/1/2/3

lack of effective support for true local and independent enterprise.

I hope to use my position on the London Assembly to bring pressure to protect the 'local'.

Noel Lynch
 Green Party Member of the London Assembly
 Tel: 0207 983 4390
 Fax: 0207 983 4398

Noel Lynch recently took his seat as one of the three Green Party members of the 25 member London Assembly. He comes from a farming and publican family, in Ireland.

If readers would like a copy of Noel's recent report 'Where have London's local shops gone?' they can request a copy from Noel.Lynch@london.gov.uk

**Advertise in next month's
 LONDON DRINKER**
**from only £45 (quarter page - all
 inclusive)**
**Call Peter Tonge now on
 020 8300 7693**

THE ROYAL OAK



44 TABARD STREET, LONDON SE1
 Tel - 0207 357 7173

Traditional Harvey's Sussex Ales,
 Served in a Traditional Atmosphere

Open Mon-Fri 11am-11pm

Food Available
 Lunchtime & Evenings

Nearest tube - The Borough

ST ALBANS BEER FEST 2003.

WHAT LEGENDS ARE MADE OF
CIVIC CENTRE
ST ALBANS.



FROM WED 24TH
TO SAT 27TH SEP.

OVER 300 REAL ALES,
FOREIGN BEER,
CIDERS, AND PERRIES.

NO ONE UNDER THE AGE
OF 18 CAN BE ADMITTED.

MANAGED BY LEISURE PLC.
ON BEHALF OF THE CITY
& DISTRICT OF ST ALBANS.

realales@yahoo.com

Designed by paul.pcd1@btopenworld.com



Wednesday 24th

5.00pm 10.30pm £2.50

Thursday 25th

11.00am - 3.00pm £2.00

5.00pm - 10.30pm £2.50

Friday 26th

11.00am - 4.00pm £2.00

4.00pm - 10.30pm £3.00

Saturday 27th

11.00am - 4.00pm £2.00

4.00pm - 10.30pm £3.00

Camra members FREE every day, any time.



St Albans
CITY AND DISTRICT



Try Us...
Established 1973



T-Shirt Products Printing & Embroidery Specialists

Thirty Years Of Print & Embroidery Experience, All Top Brands In Stock.

So Try Us Today, For The Best Competitive Prices Around.

These Companies Have!! **GUINNESS - COCA COLA**

- HAIG WHISKY - JB WHISKY - FULLERS -

EXMOOR ALES - MARLOW BREWERIES - WHITBREAD

So Let Us Quote You For Your Commemorative Beer Festival

T-shirts & Pub Staff Needs...



FOR OUR FULL RANGE OF GARMENTS PLEASE RING, E-MAIL OR FAX

020 8568 3525

Fax: 020 8568 6217

**Unit 16, Worton Hall Ind Est, Worton Road,
Isleworth, Middlesex, TW7 6ER**

E-mail: sales@tsp-tshirts.co.uk

The Nelson Brewing Company

The Historic Dockyard, Chatham, Kent

Brewers of hand-crafted, cask-conditioned ales brewed on a world heritage site at the Historic Dockyard, Chatham.

We use only the finest malted barley and whole Kentish hops.

Why not arrange a brewery visit and take the opportunity to taste a range of our ales and enjoy the surroundings of the Historic Dockyard.

We also cater for outside bars and events for any occasion.

Our ales are also available in take home 36 and 18 pint polypins as well as firkins, just phone the brewery and we will rack one off especially. Why not name a beer to your own requirements, we will make a pump clip tailor-made for you.

Our beers are also available at our own Nelson Brewery Company pubs.

- ◆ **The Elephant**, *The Mews in Faversham, Kent*
- ◆ **The Hope and Anchor**, *Station Road, Herne Bay, Kent*
- ◆ **The Little Crown**, *High Street, Chatham, Kent*



Public and trade enquiries welcome, contact us for a full list of our beers and prices or to arrange one of our team to visit you on site.

Telephone: 01634 296407 or 01634 828032 Fax: 01634 295168

◆ Licensing Bill

CAMRA has welcomed the progression of the Licensing Bill through both Houses of Parliament. The Bill will now go forward for Royal Assent. Mike Benner, Head of Campaigns, said *'After years of campaigning we're only one step away from dumping Britain's archaic licensing laws and moving to a more flexible system. Pubs will soon find it easier to extend their opening hours to meet the needs of their customers.'*

CAMRA is calling for all sectors of the beer and pubs industry to embrace the Bill and work with the Government and Licensing Authorities. Benner added 'It's essential that the transition to the new system is made as smooth and painless as possible and this will require a partnership between the authorities and the trade.'

Indeed! Local CAMRA branches remain worried that changes affecting applications for temporary or occasional licences could make licensing arrangements for some beer festivals a lot more complicated and very much more expensive in future.

◆ New Inventory highlights heritage classics

Of over 60,000 pubs in the UK, a mere 250 have interiors of outstanding heritage interest. The huge majority of pubs have undergone drastic alterations in recent years and less than 4% have retained features of historic significance.

The 'National Inventory' (of outstanding historic pub interiors) was released in July by CAMRA, the Campaign for Real Ale, featuring 205 pubs with exceptional historic interiors and a further 43 pubs with particular internal features of national historic importance. The third edition of the National Inventory has been painstakingly compiled by CAMRA's Pub Heritage Group. It includes pubs from across the UK including Northern Ireland. Pubs are selected purely for their internal physical fabric and things such as beer quality or 'atmosphere' are not considered.

CAMRA is calling for local authorities to do more to protect pub interiors from unsympathetic alteration. A large number of National Inventory pubs are in



THE RED LION

Linkfield Road, Isleworth

Tel: 0208 560 1457

Champions

Beer Festival

August 22nd - 25th

Over 30 Real Ales from

across the Country

Music - Children's

Entertainment & Food

For more details see

inside back cover

The Brewery Tap

John and Heather welcome you to the Brewery Tap.

Five rotating Cask Ales

Guests soon to appear include

Archers, Cottage, Holts, Rebellion,
Slaters & Hogs Back and now we often
stock mild ale.

New lunchtime menu. Genuine home-
cooked food.

Traditional Sunday Roasts 12 - 3.00pm

Wednesday Night is Tapas Night

Open all permitted hours

Nostalgia Juke Box

68 High Street,
Wimbledon Village, SW19

(10 minutes from Wimbledon station)

020 8947 9331



statutorily 'listed' buildings - most of them at Grade II, which means their safeguarding is essentially entrusted to local planning authorities. In the past, they have not always exercised their control powers with the same force to the insides as to the outsides of listed pub buildings, and this has contributed to the loss of many valuable pub interiors.

Not all historic pubs qualify for statutory listing, but they could benefit from inclusion in 'local lists' of the kind some local authorities already operate. CAMRA is calling for all local authorities to establish such lists, which can play a major part in influencing local planning policies and raising awareness about locally important historic buildings, including pubs. CAMRA believes that, at the present time, only about a third of local authorities choose to maintain such lists.

A recent report from English Heritage has highlighted a shortage of resources within local planning authorities for dealing with the historic environment. The report shows that 15% of authorities have no Conservation Officer posts at all and three-quarters of conservation areas have no adopted character assessments. The report also found the influence of Conservation Officers within planning departments to be generally low.

Referring to the Government's policy document of December 2001 ('The Historic Environment: A Force for our Future') Dave Gamston, Chairman of CAMRA's Pub Heritage Group and Editor of the National Inventory said, 'The Government is placing great importance upon conservation issues and character assessments in local planning. Yet there seems to be no plan at all to provide the necessary resources for planning authorities to action what is preached. Things clearly need to change if building conservation at the local level is to stand a chance of being successful.'

A 48 page booklet, the new National Inventory comprises an introduction, then brief descriptions of all the pubs so that people know what to expect. It is available from CAMRA Headquarters, 230 Hatfield Road, St Albans, Herts AL1 4LW - send a cheque for £2.50 payable to CAMRA Ltd together with a 8" x 6" addressed envelope.

◆ McMullen's saved

Over the last couple of years, drinkers have got used to that sinking feeling when their favourite local brewery announces that its operations are 'up for review'. Too often, the 'review' means closure for the brewery, replaced by a shopping centre or flats, and disappearance of locally brewed beer. Against this background, the news that McMullen, Hertfordshire's oldest and biggest brewer, is to stay in brewing has been well received by members of the Campaign for Real Ale.

CAMRA has been battling to save the brewery from closure since 2002 when a review of the business was announced.

Mike Benner, Head of Campaigns and Communications said, 'We're delighted that drinkers will be able to enjoy McMullen's beers in the future. We believe the decision by the McMullen Board to stay vertically integrated, selling their fine ales through own pub estate is the right thing to do and it will secure a future for the company.'

CAMRA is calling for an urgent meeting with McMullen to discuss the future of their cask beers and pubs. Mr. Benner added, 'We want to show our support for what they are trying to do. We'd also like some reassurance that Mac's beers will still be available in the free trade as well as in their own pubs.'

◆ Greene King announce new look for IPA

Greene King, the ambitious Suffolk brewer, is aiming to knock Tetley Bitter off its number one spot as the most popular session cask beer in Britain. IPA, already the leading cask brand in the South, is getting a helping of the same marketing effort that has seen Abbot Ale increase sales by 20 per cent a year.

A £1 million advertising campaign has been launched, including TV and cinema advertising, branded glasses and point of sale posters. Sarah Brindley, GK's Marketing Manager said, 'We have a clear objective and that is to put Greene King IPA at the top as the number one cask ale in Britain, but it will not be done by compromising on quality or craftsmanship.'

GK's strategy seems to be working well so far this year, as it has managed to defy the gloom on some parts of the pubs sector to turn in profits ahead of forecasts. Pre-tax profits were up 8 per cent to £75m for the year to May.

◆ Orkney is Scottish champion

'Dark Island' from Orkney Brewery in Quoyloo has been named as the Champion Beer of Scotland 2003, judged at the Scottish Traditional Beer Festival in Edinburgh in June. This is the second time Dark Island has won the top prize, having been a previous winner in 2000. The beer is described in the 2003 edition of 'The Good Beer Guide' as, 'dark, beautifully balanced and full of malt and fruit, and a hint of caramel. A sweetish taste leads to a long-lasting, roasted, slightly bitter finish. Full bodied and deceptively drinkable. If beer was whisky, this would be it!'

Orkney Brewery was set up in 1988 in an old school building by former licensee Roger White. The

brewery is run along strict ecological lines with its own water supply and unique effluent control system. The brewery produces several other Scottish favourites including 'Raven Ale' and 'Red MacGregor'.

◆ Cask Beer Week, 19-28 September

The Independent Family Brewers of Britain (IFBB) are hosting a second Cask Beer Week in September, this time with organised support from CAMRA branches. It will highlight and celebrate cask beer as part of our tradition and heritage, a natural product made from fresh local ingredients, offering hundreds of different brands and flavours.

IFBB members such as Fuller's, Young's, Shepherd Neame, Harveys, McMullen and Ridleys in the South East represent an important sector of British industry and are key employers in their regional economies. Let us keep drinking their beer.

For Young's, 28 September will see the second open day at the beer exhibition at Kew Gardens. Fuller's are hinting at 'giant pints again!'

◆ Young's confident in long term value

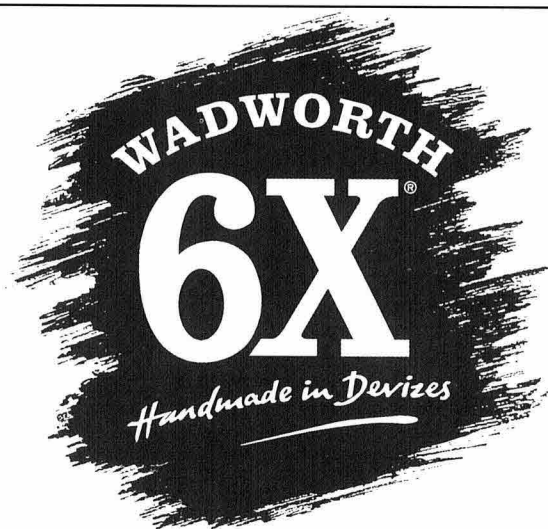
Against a background of reduced tourism in 2002, city job losses, large increases in national insurance and government red tape – 153 new rules since 1997 affecting licensees – Chairman John

Young reported at the Company's AGM on 15 July on a most successful year's performance. At £107,828,000, turnover was 1.5% up on the previous year. Adjusted profit before tax was 0.1% higher and dividend per share 5.2% more.

The Wandsworth brewery dated back to 1581. Young's had been brewing there since 1831 and, said Mr Young, 'Long will we continue to do so'. He had confidence in the long term future and the delivery of long term value. Pubs totalled 207, 80% of them freehold, operated as tenancies or managed according to individual circumstances – since the year end, 12 more had become tenancies. New opportunities were always being explored, but sellers' price expectations were often unrealistic.

Guinness Peat spokesmen entertained the meeting as usual with seemingly divisive and vexatious questions, fielded courteously by directors as others asked why Guinness Peat did not simply sell their shares.

Retiring chief executive Patrick Read had been honoured the previous week by a Lifetime Achievement Award at the annual dinner of the Parliamentary Beer Club. Recalling the 35 years since he had brought him in to start Young's managed house department, John Young recognized the support he had received from his wife in managing what was, in effect, an around the clock business.



6X sells through national distributors

Interbrew, Carlsberg-Tetley, Scottish Courage, Coors and Beerseller.

LOCAL ROUND UP

◆ Young's champion cellarmen

Young's brewery has recently run its first ever cellar competition, and the challenge was so intense that there were not one but three winners.

The chairman of the judges, head brewer Ken Don, told short-listed licensees at a presentation ceremony that as many as eight pubs could have won first prize. The pubs were judged on ten criteria, including cleanliness and tidiness of the cellar, the licensees' knowledge of cleaning methods and beer-handling techniques, the staff's knowledge of Young's beer range, the taste, flavour and appearance of the beer over the bar and stock rotation.

The three winners were Eugene McCaughey and Janet Carruthers of the Buckingham Arms, Westminster; Mark and Tracey Davis of the Court House, Dartford, Kent; and Tony and Sian O'Brien of the Duke's Head, Wallington, south London. They received framed certificates from brewery chairman John Young at the presentation at the Duke's Head, Wallington.



The picture shows licensees from the three winning pubs (left to right): Tony O'Brien of the Duke's Head, Wallington; Eugene McCaughey of the Buckingham Arms, Westminster; and Mark Davis of the Court House, Dartford.

◆ GLA take Pride in Fuller's

As part of the Mayor of London's promise to visit all of the London Boroughs, Ken Livingstone and members of the Greater London Authority visited Fuller's brewery in Chiswick in June. Ken and his party was taken on a brewery tour by Fuller's Chief Executive, Michael Turner, Commercial Director, Tim Turner and Brewing Director, John Keeling.

The Mayor and party greeted the workers along the route and Ken Livingstone even helped out on parts of the brewing process. He did such a good job on

the racking line, filling casks with London Pride, that the boys on the line were able to take a break while the Mayor stepped in, under the watchful guidance of John Keeling.



Once the tour was finished, the Mayor and party were taken to the brewery's Hock Cellar to meet the directors and Ken pulled himself and the directors a pint of London Pride.

◆ Britannia rules for the fourth time

The Britannia, a Young's house in Church Road, Barking, has been chosen by the South West Essex branch of CAMRA as its London Pub of the



John and Rita with all four of their Pub of the Year certificates.

Year for the fourth time in nine years: licensees John and Rita Pells also won the award in 1995, 1996 and 2000.

Rita said: 'We're so pleased and so proud. The local CAMRA members have recognised our hard work in running a good, clean, welcoming pub in an area that is undergoing massive redevelopment. Many of the houses and flats around here are being demolished but we've managed to maintain the highest standards throughout.'

LOCAL ROUND UP

John and Rita, who are both 52, have been running the Britannia for 15 years - the first 14 as managers and for the past 14 months as tenants. They were previously in charge of pubs for other companies in the East End of London.

◆ The Priory Arms wins again

The CAMRA SW London Pub of the Year 2002 celebration took place on 31 May at the Priory Arms, Stockwell, one of the very few genuine free houses in London and a popular and frequent winner.



Branch chairman Chris Cobbold presented the framed certificate as regulars and branch members enjoyed a great range of beers and a tasty barbecue

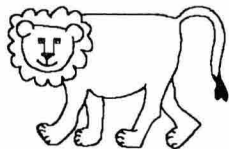
on the warm Saturday evening.

Local CAMRA member Jeff Lloyd writes, *'I must say that after moving to Brixton from Sidcup three years ago I have found the Priory Arms (my local) a very welcoming and friendly pub. Margate (Dave) and the staff, not to forget 'the govners' Nicky and Gary make this pub so inviting that I always come back. It may be because of the German bier! Congratulations to all the hard work that Gary, Nicky and the staff did to make this the top SW London pub once again.'*

(Owing to an oversight, and no fault of the Priory Arms, the advertisement in the last issue omitted 'SW' before 'London Pub of the Year. Alongside the Britannia and others, the Priory Arms is now a contender for the 2003 London award, the 2002 winner being the Sultan in South Wimbledon.)

◆ Say cheese!

The 8th annual Beauty of Hops competition held in June at the White Horse, Parsons Green, saw the search for the perfect beer to partner cheese. Nearly sixty beers were entered for the two categories. Probably due to the lack of ploughmen in the capital, London beers came nowhere in the ploughman's lunch category. However they did better in the after-dinner cheeseboard category with Young's Old Nick winning and Fuller's Golden Pride taking third place.



REMEMBER THESE DATES
Friday August 29th from 6.00pm
Saturday August 30th all day
Sunday August 31st all day

The Lion, Teddington

27 Wick Road, Teddington, Middlesex

4th ANNUAL BEER FESTIVAL

20+ Distinctive Ales, Ciders

BBQ (continental food) Live 'Music' Garden Games

A genuine fun affair

Telephone: 020 8977 3199
e-mail: ask@thelionpub.co.uk

Fax: 020 8977 6631
web site: www.thelionpub.co.uk

Buses 281 & 285
5 minutes walk from
Hampton Wick
railway station

THE LONDON REGIONAL INVENTORY

This, our third preview of pubs to be included on the Regional Inventory of Historic London Pub Interiors, looks at three contrasted pubs in different parts of the capital. One is a great, riverside old favourite, the Dove, Hammersmith, while the other two are newcomers to the draft RI. The front parts at the Dove are really exceptional due to the survival of an amazing, tiny snug on the right as you go in. It belongs to the same world as the tiny drinking boxes at the Barley Mow, Dorset Street, W1, which we mentioned in the last edition of London Drinker. For a time this pub was on the CAMRA National Inventory but, after consideration of other pubs all over the country, it was felt that the modern changes at the rear had too great an impact for listing in the really big league. Nonetheless the old heart of the pub is wonderful and well worth the visit. Ales - Fuller's range.

The Falcon is one those spectacular pubs from the end of the 19th century, embellished with ornate glass and woodwork. It has a prodigiously impressive central servery. They claim the bar counter is the longest in the country but we hesitated to print this intelligence in our description without getting our tape measures out since precisely the same claim is made for the one at the NI-listed Horse Shoe Bar in Glasgow. Experience has taught us to be very cautious about 'facts' to do with pubs - so often they are of the imaginative 'Queen-Elizabeth-slept-here' kind! Ales - Adnams Bitter and Fuller's London Pride.

No fancy claims for our third pub, the George in Docklands, close by Crossharbour DLR station, except that it has undergone unusually little change since it was rebuilt in the 1920s. It has retained three separate rooms and large amounts of its fittings. The major change is that the off-sales compartment has been incorporated into one of the bars, reflecting the fact that no-one pops down the offie these days to get their take-home supplies. Supermarkets like the huge Asda a few hundred yards away have made sure of that (to say nothing of the lively cross-Channel trade!). Ale - Greene King Ruddles Best.

Dove, 19 Upper Mall, Hammersmith, W6 (Tel: 020-8748 5405)

Famous Thames-side pub: probably built in the early/mid 18th century and refronted in the early 19th century. Rear parts are mostly modern and aimed at food customers but the two front rooms are remarkable survivors from a more basic existence (see, for example, the 1921 photos on the wall). Delightful, tiny snug on right, said to be the smallest public bar in Britain. Larger room with old bench

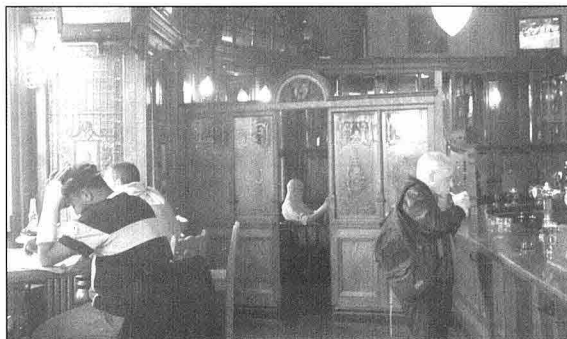
seating and some panelling that may even go back to the eighteenth century: Post-war repairs in 1948 saw the addition of the substantial brick fireplace with its exuberant Portland stone carving of a rainbow and dove. Listed Grade II.

Open 11.00 am to 11.00 pm Monday to Saturday, 12 noon to 10.30 pm Sunday.

Falcon, St John's Hill, Battersea, SW11 (Tel: 020-7924 8041)

Mightily impressive hotel-cum-pub of 1887 with many original features. Huge central servery with curvaceous counter and enormously high bar-back with etched glass mirrors. Much wall panelling. Surprisingly restrained detailing in the woodwork in contrast to the usual Victorian exuberance in pubs. Small, intimate bar at front left. Stained glass in rear area showing the pub in its 1801, 1883 and 1887 incarnations. Note also the stained glass panel depicting a falcon in the front door lobby. Listed Grade II.

Open 11.00 am to 11.00 pm Monday to Saturday, 12 noon to 10.30 pm Sunday.



The Falcon

Photograph: Bob Steel, Croydon & Sutton Branch

George, 114 Glengall Grove, E14 (Tel: 020-7366 1721)

Rebuilt plainly in the 1920s and retaining three separate rooms and a remarkable amount of the original fittings. The large bar in the angle has incorporated an off-sales (detectable in a blocked doorway outside) and has post-war, rather crude panelling. However, it does keep its rustic, lapped bar counter. Typical 1920s plaster ceiling decoration in the far room. Not listed.

11.00 am to 11 pm Monday to Saturday, 12 noon to 10.30 Sunday.

Geoff Brandwood (CAMRA's Historic Pubs Caseworker)

Jane Jephcote (Chair of CAMRA's London Pubs Group)



The Biggest Real Beer Festival in the World

The Great British Beer Festival

Tuesday 5 August - Saturday 9 August 2003
London Olympia

The largest volunteer-run beer festival in the world, the Great British Beer Festival is a unique annual celebration featuring over 700 real ales, ciders and foreign beers. It is a beer drinker's paradise, with something for everyone.

◆ **Over 400 real ales** from over 200 different British brewers! Wheat beers, ginger ales, beers flavoured with herbs and spices, lots of tasty bitters, milds and stouts

◆ **200 foreign beers** Beers from around the world including Czech, Russian, Italian, German, Belgian, Dutch and American. These are not just classic styles but exciting flavours and variations!

◆ **Lager & cider too!** The Festival features some of the finest continental lagers including dark and some shockingly good American versions - also forty traditional ciders and perries (pear cider), but you won't find the usual bland mass-produced brands.

◆ **Regional promotions** CAMRA will be celebrating the range of beers produced by local brewers around the country. Each day will promote different regions with different themes.

◆ **Eye-catching membership promotion** - new campaign to increase current membership from 68,000 to 100,000 in the next three years. New promotional material to be unveiled at the festival on Tuesday 5 August.

◆ **Champion Beer of Britain** - Final judging for the 2003 competition takes place on Tuesday 5 August. - the consumer's choice of the best British beers.

◆ **No 'Rip-Off' zone** - full pints guaranteed. We use oversized lines glasses so you get what you pay for - a full liquid pint every time.

Live music and entertainment

Tuesday 5 August evening, **Chaminade String Quartet**

Wednesday 6 August lunch, **Zambula** (African dance and Celtic rhythms)

Wednesday 6 August evening, **Lindisfarne**

Thursday 7 August lunch, **John Pawlik** (acoustic guitar)

Thursday 7 August evening, **John Otway**

Friday 8 August lunch, **Jazzy Trousers**

Friday 8 August evening, **The Hamsters**

Saturday 9 August, **Fulham Brass Band**, 2 sets

Opening times and ticket prices

Tuesday - 5pm to 10.30pm (£6, £5 for CAMRA members)

Wednesday, Thursday and Friday - 12 noon to 10.30pm (£6, £5 for CAMRA members)

Saturday - 11am to 7pm (£5, £4 for CAMRA members)

Season tickets also available for all sessions (£17.50, £15 for CAMRA members)

SPECIAL BREWER FOR A DAY

Ever wondered what it would be like to be the brewer at Young's Brewery? Well, you can find out, as the opportunity to experience the role, albeit for just one day, will be up for auction on the Thursday evening (7th August) at this year's Great British Beer Festival at Olympia.

This is just one of the items up for grabs at the breweriana auctions which will take place each session on the stage. Apart from this and a wide

range of brewery, beer and pub related items, there will also be auctions of places on an exclusive trip around two breweries in the Nottingham area. Hardy & Hanson's brewery at Kimberley will be visited first, and then it's on to the smaller Castle Rock brewery in Nottingham. The trip will be on Saturday 27th September, and transport to the Nottingham area is NOT included.

REMEMBER KEVIN

The opening day of the 2003 Great British Beer Festival (GBBF) marks the first anniversary of the death of Kevin Reeve. Kevin had been manager of the Every 1's a Winner tombola stand at GBBF for many years and was warmly welcomed by the Site team, as an experienced fork-lift truck driver, to assist throughout the festival's 12-day duration. As a mark of respect from his fellow workers, Kevin was posthumously awarded the Christian Muteau

Award at the end of the 2002 GBBF.

Over the course of the last year collections have been taken at the London-based CAMRA beer festivals at which Kevin had worked. To date more than £250 has been passed onto the British Heart Foundation, the charity nominated by Kevin's sister. If you knew Kevin and would like to donate money in his memory, the British Heart Foundation will have a stand at the 2003 GBBF.

KINGSTON BEER FESTIVAL SELLS OUT

The fourth Kingston Beer Festival proved to be a bigger success than envisaged with all cider and perry sold by 7pm on the Saturday and the Real Ales following suit at about 8.30pm. The good weather encouraged customers to come early and stay longer, meaning that more beer was drunk than predicted.

Organiser Phil Clark said 'I hope none of our Saturday evening customers were too disappointed by the sell out. We are already considering options for laying on more beer, cider and perry at next year's festival.'

The Strathmore Arms

St Pauls Walden, Nr Hitchin,
Herts SG4 8BT
01438 871654

FIRST ANNIVERSARY BEER FESTIVAL

Thurs 25 - Sun 28th September
Open all day throughout the Festival

25+ brand new or rare beers

*We're in between Hitchin and St
Albans on Sovereign Bus
route 304.*

See www.sovereignbus.co.uk for details

Woking Beer Festival 2003

The 10th Woking Beer Festival will take place on Friday 7th and Saturday 8th November 2003 at Woking Leisure Centre, organised by Surrey/Hants Border CAMRA with Woking Leisure Centre and Woking Borough Council, plus strong support from CAMRA members from all over the South (and beyond!). 70+ real ales are planned to be available, plus ciders and perries and, of course, the SHB CAMRA foreign beer operation will be fielding a wide range of imported bottled beers. All subject to availability.

There are three sessions: Friday and Saturday evening from 6pm to 11pm, and Saturday lunch time from 11am to 3.30pm. Entrance strictly by ticket only, price £5.00. Tickets are available in advance from Woking Leisure Centre, Woking Park, Kingfield Road, Woking, Surrey GU22 9BA. Cheques, payable to 'Woking Borough Council' + SAE please, or phone the credit card hotline (no booking fee) 01483-771122 (8am - 9pm) seven days a week.

10th CROYDON & SUTTON REAL ALE FESTIVAL

WALLINGTON HALL

STAFFORD ROAD, WALLINGTON

Opposite Sainsburys

Less than 10 mins walk from Wallington Station

9th - 11th OCTOBER 2003

OVER 40 REAL ALES

CIDER & PERRY

BRITISH "REAL ALE IN A BOTTLE"

FOREIGN BOTTLED BEERS

HOT & COLD FOOD

CAMRA PRODUCTS

SOUVENIR GLASS

DISABLED ACCESS AND TOILETS



Fullers Head Brewer John Keeling will answer your brewing questions during Thursday lunchtime

OPENING TIMES & ADMISSION CHARGES

Thursday 9th 11am - 5pm **FREE Admission**

Thursday 9th 5pm - 10.30pm **£2.50 (Members £1.50)**

Friday 10th 11am - 5pm **FREE Admission**

Friday 10th 5pm - 10.30pm **£3.00 (Members £2.00)**

Saturday 11th 11am - 6pm **FREE Admission**

Last evening admission: 10pm Right of admission reserved



The CAMRA London regional meeting advertised in the last issue of London Drinker proved most enjoyable and informative for all who attended, including your Editor. After a good choice of beers over lunch, Geoff Brown, Head of Marketing at Punch Pub Company was invited to speak first.

Formed in 1998, Punch have been at the forefront of change that has seen thousands of pubs leave the direct control of brewers and a significant move away from the control model of managed pubs. Punch only operate leased and tenanted pubs - 4500 of them. From 2000 to 2002 they did have a managed house sister company, at first called Punch Retail but now known as Spirit Group, a privately owned company totally separate from Punch Taverns plc and with no common directors or management.

The publicans' opportunity

Punch own the freeholds and lease the business opportunity to the publicans. How they develop their business is for them, within contractual and legal restraints - they can't knock the pub down, for example. It is then the publicans' choice whether to sell cask ale or not. If they decide to sell cask ale, they have a free choice of beers from the Punch price list. Punch requires every new publican to attend a 10 day training course before taking a pub, including a 1.5 day cellar management course. Punch had 900 new publicans joining in 2002. 'It is our purpose to help our retailers build better businesses'.

Beer is best

Nearly three years ago Punch Pub Company launched a cask ale scheme called the Finest Cask, run by knowledgeable ex-brewery people with a love for the industry and a passion for cask ale. Punch sees cask ale as a vital part of the traditional British pub and wants to see it sold there. It remains the one product sold in pubs that simply cannot be replicated in the home. There will be pubs where cask ale plays no part and maybe rightly so, but for the large majority of Punch pubs cask ale offers an opportunity for competitive advantage. That said, against a background of equally vigorously support from Punch for the mass market lager brands as well as nitrokeg ales and stouts, cask will have to succeed on its merits, not simply fond memories. The underlying theme was simple: *'We want to see more people in more pubs more often. When they are there we want more of them to drink beer.'*

Quality is the key

Punch believe that quality is the most important factor in selling cask ale and that the work of Cask Marque is crucial in promoting high standards in cask beer retailing. Without that quality it will prove

increasingly difficult to attract new drinkers to cask ale. *'We need to find ways to make cask ale a reason to get out of the armchair and into the pub, as well as helping consumers know where the pubs with excellent cask ale can be found.'*

Choice v. efficiency

It is true that pub companies deny licensees access to cask ale choice: those with no guest ale rights (approximately 80% of Punch pubs) have a restricted range. Interestingly, less than a half of those with guest ale rights exercise them and 70% of those do so for a single product. Punch reject any implied criticism that access to endless options is the key to success: too much choice in the hands of many licensees can see quality compromised and, of course, Punch will always want control of the product range. *'Our business model is designed around income from beer sales and distribution efficiencies associated with the range we have. We add a margin to our cost of purchase and that goes to service the company costs. Many smaller or micro-brewers are simply far too high cost producers. If we added national brewer margins to their products the 'little guys' beer' would become outrageously expensive. To allow a cask ale free for all in our estate would be frankly business suicide for us and is simply not going to happen.'*

On a more positive note, Punch recognise the need to provide a strong choice of cask ales. Within the Finest Cask scheme over 60 cask ales will be made available in 2003 and, in addition, Punch have over 45 cask ales in stock in various depots around the country. Creating a single distribution network by moving all Punch pubs to Carlsberg Tetley deliveries in November 2002 increased choice for many pubs by extending the geographical range of some products.

Regional appeal

Punch do work particularly closely with regional brewers to help drive the virtues of cask ale. By contrast, the launch by Coors of Worthington 1744 has been the first significant promotional activity brought to Punch by a national brewer for over two years. In 2002 Wolverhampton & Dudley, Youngs, Charles Wells, Greene King, Adnams and Shepherd Neame were involved with promotion in England and Wales. Punch were now trialling two Hook Norton beers in their Oxfordshire pubs and would shortly be running localised activity with Jennings in Cumbria and Brakspears (now owned by Refresh UK) in the South East. Ringwoods Bitter was available in Hampshire and Sharps in Cornwall - an indication that Punch do respond where strong demand can be proved. *'Cask ale remains a very regional product and we are always working to match the right products to the local consumer.'* At the same time, Punch had

WHATEVER
YOU DO,
TAKE PRIDE.



PUNCH DRUNK AT THE SOUTHSIDE BAR

helped to drive Caledonian to produce a nitrokeg 80/- as very few of their Scottish pubs sell any cask ale.

Innovation

The recent relative success of the regional brewers had been at a time of extreme decline in the overall cask ale market. Cask volumes had more than halved in the last 8 years, primarily due to the switch of national brands from cask to nitrokeg and now made up only 8% of the UK's beer sales. For competitive advantage Punch want to see cask back in growth. The product perhaps did not require enormous innovation in its recipes or production but some in its marketing would undoubtedly open more doors to more consumers and Punch believe it can be done if we all focus on quality and high retailing standards.

CAMRA might argue that the Punch business model and the heavy promotion of mass lager and nitrokeg brands made the job more difficult, and ask what Punch was really doing to help the cask ale market.

However, in addition to the Finest Cask scheme, Punch now have five pubs that are free of tie for cask ales - one is the Rising Sun at Epsom - allowing them to sell a broader range of beers. *'It is unlikely ever to form part of Punch's core business strategy, but this was our way of tackling a pub with a highly developed existing cask demand. We expect to let more pubs free of tie on cask in the future, where the offer, the circumstances and the demand are right. The rents of these pubs will necessarily reflect that freer status. If cask really has the power we think it has, then it will be able to prove it by succeeding commercially.'*

Geoff closed on an upbeat note, *'I hope you can look me in the eye and know that Punch want to sell more cask beer. Punch want to make sure the public connect the act of drinking beer with visiting great British pubs. We want to ensure that the power of the British pub continues to be exemplified by the magnificence of the cask ale sold within it.'* His audience could not disagree.

PROTECTING OUR RIGHTS

Second to speak at the 14 June meeting was Ian Bellerby, a Senior Trading Standards Officer for the London Borough of Merton. Uniform weights and measures had been in force at Pompeii and long before then in ancient Egypt. In Britain, local government responsibilities for corn, ale and wine measures could be traced back to Magna Carta in 1215 though the crime of short measure was a twentieth century concept, fully adopted via the 1963 Weights and Measures Act. A CAMRA member himself, Ian had worked since 1965 (then as a Weights and Measures Inspector) for Kingston, Buckinghamshire, Surrey, Harringay and Westminster Councils and for three years in private practice.

Against this background he spoke strongly against the likely adoption by the present government of legislation that would recognise the '95% pint' canvassed by brewers instead of the full pint liquid measure to which the customer had always been entitled.. Under such a regime, drinkers could have difficulty in asking for a top up and prosecutions for short measure would be unlikely to succeed above as little as 90% liquid. Neither he nor his audience was aware of any unwillingness on the part of drinkers to pay for the full pint they had the right to expect at present. 'The battle to obtain legislation might be one that is won and lost at the same time.'

Price lists were another legal safeguard. Ian confirmed that these were required not only to be displayed but to be displayed so that customers could read them. They also needed to be accurate, and that

meant it was illegal for a pub to round the price of a half pint to above the nearest penny unless the higher price for the separate half pint was shown on the list.

Serving keg beer from a handpump amounted to substitution, actionable under the Trade Descriptions Act. Brewers should also beware of changing too drastically the characteristics and, particularly, the strength of their beers, if customers then found they were not drinking what they expected when ordering their usual beer and complained that they were misled. 'Brands' too might risk action if the images they conveyed were false to a material degree, although they were legally 'transportable' unless, like champagne, for example, they were protected as to geographical origin or other restriction..

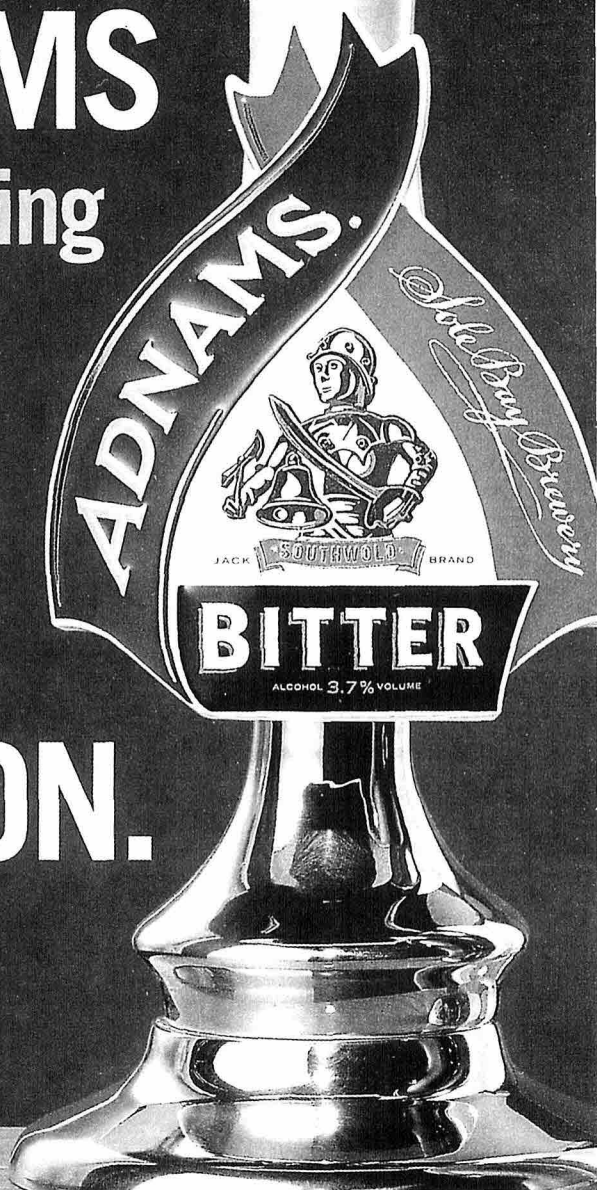
Ian confirmed that pubs should turn round their pump clips if the beers on display were not actually available for dispense. Again, it could be misleading to a material degree to suggest a far wider range of beers was available on draught than was ever in practice the case - though such a charge would tend to be dwarfed by more significant offences for which a publican, who indulged in such a deception, would in all likelihood at the same time be prosecuted.

The audience was left in no doubt that Trading Standards Officers are responsive to consumer complaints and effective in pursuing them under the available legislation. If you believe you have been cheated or seriously misled in a pub, and its landlord has been unable to help, contact its local Trading Standards Department - as well as the local CAMRA branch.

SEEK OUT
ADNAM'S

at discerning
outlets

ALL
OVER
LONDON.



LETTERS TO THE EDITOR

Dear Editor

The saga of (non) smoking inside a Wetherspoons pub continues and took a new twist, with 'The Central Bar' in Shepherd's Bush putting up large signs 'Dinners Only' at the edge of their non-smoking area.

Gordon Joly.

Dear Editor

Sad news. Last night 17 June, it seems the Pride of Spitalfields E1, had a fire. The pub is now burnt to a cinder. Sic transit Gloria.

After seeing this devastation, with a tear in my eye, I ventured back down Brick Lane and went across to the Castle, Aldgate E1. Why oh why is this place in the GBG? Two of the three beers were not available, so we had no choice but to have the Courage Best. Yuk! The pint was thin and watery, and the condition very poor. You must stop the GBG selectors putting the Castle in the next edition. I shall not return - even for the happy hour between 4 and 5 o'clock when beer is £1.50 a pint.

But what can you replace it with? What other pubs are GBG worthy in this neighbourhood?

Be hoppy

David Bunyan

Robyn Parr-Ferris of CAMRA East London and City Branch comments:

The damage to the Pride, whilst serious enough, is certainly not bad enough to describe as "burnt to a cinder". If you want to know more pick up a copy of the East London Advertiser.

I take on board your comments about The Castle. Pubs are judged on an annual basis - therefore when surveyed a pub will be worthy of inclusion. However, if circumstances change then that may make the pub liable for deletion. We will certainly look into your allegations of poor beer quality. As far as a pub to 'replace' it with, that isn't quite the way the GBG works! If we lose one pub for an area, we do not have to find another to put in. The East London and City branch's philosophy on GBG entries has always been that only truly GOOD beer should make a pub worthy of entry, and that an area not having any good pubs should not mean putting forward sub-standard ones to 'make up the numbers'. If you find yourself in the area of the Pride of Spitalfields again before it re-opens, and are wanting a pint, may I suggest you try the Black Bull, where I am sure you will find the Nethergate to your liking.

Dear Editor

At the end of September 2001 the London Pubs Group did a crawl of historic pubs in Haringey. One of the pubs we visited was the Starting Gate, Station Road, N22 near Alexandra Palace. Its name refers to the racecourse, which used to be nearby.

One striking feature of this grade II listed pub was,

to quote from the listing description, 'a series of framed panels containing water-colour paintings, mostly pastoral views but one of Alexandra Palace'. There were three or four of these and they were very large (6 to 8 feet high as I recall). We were dismayed when the barman told us that the pub was due to be refurbished the following week but, as the pub was listed, we hoped that the outstanding features of the pub's interior would be preserved.

Following refurbishment the pub reopened in late 2001 as The Gate, a pizza pub. I have not revisited it myself but, according to some of my contacts who have visited the pub recently, the painted panels are nowhere to be seen. Do any of your readers know what has happened to these delightful panels? Also, does anyone have any photos of them?

Jane Jephcote

London Pubs Group

Dear Editor

As an ex-Special drinker I'm on the look out for my 'New Young's Drink' and, after some disasters I have found a fantastic one: half a pint of draught Special in a pint glass, topped up with half a bottle of Special London Ale. The next pint you have, you pour the rest of the bottle (avoiding the sediment obviously) and ask the bar staff to top the rest up with draught Special.

It averages out at just under 5.5% abv. It still retains the rich fruitiness of the Special London but knocks the abv down to somewhere lower than rocket fuel. It also breathes life into the 'mediocre', I mean draught Special. Let's hope Young's in their infinite wisdom don't want to change the Special London.

Kingston was great, some real eye/mouth openers. Beers were interesting too!!!!

Tobias A Turner-Simmonds

PS I walked into the Princess of Wales in South Wimbledon on Tuesday (8 July) and was strongly advised to try the new Champion. I did; it was wonderful, a really great refreshing summer beer. If it goes on draught, the likes of Summer Lightning had better watch out. I know I have just contradicted myself but praise where praise is due.

**Advertise in next month's
LONDON DRINKER**

**from only £45 (quarter page - all
inclusive)**

**Call Peter Tonge now on
020 8300 7693**

BRANCH DIARIES

Welcome to our regular details of London CAMRA Branch contacts and events. This is where branches can say what is happening in their areas that might be of interest to drinkers across London. Events for August and September 2003 are listed below.

Branch meetings and socials are open to all - everyone is welcome to come along.

LONDON LIAISON COMMITTEE *Secretary:*

geoff@coherent-tech.co.uk

(Regional co-ordination meeting for London Branches)

Wednesday 24 September (8pm) Royal Oak, Tabard St SE1

LONDON PUBS GROUP. *Jane Jephcote 020-7973 3102*

(W), *jane.jephcote@english-heritage.org.uk*

All branches and members interested in pub research and preservation welcome.

August – Mon 4 Joint GBBF/London Pubs Group Evening

Crawl of Bloomsbury and Holborn. Meet (6.45) Lamb, Lamb's Conduit Street, WC1; (7.10) Rugby, 19 Great James Street, WC1; (7.40) Dolphin, 44 Red Lion Street, WC1; (8.10) Cittie of Yorke, 22 High Holborn, WC1; (8.40) Old Mitre, 1 Ely Place, Ely Court, EC1; (9.30) Seven Stars, 53 Carey Street, WC2; (10.10) Princess Louise, 208, High Holborn, WC1; (10.50) Museum Tavern, 49 Great Russell Street, WC1.

September – Wed 17 (7.15 for 7.30pm) Meeting. Royal Oak, Tabard St, SE1 (upstairs).

BEXLEY. *Martyn Nicholls 01322 527857 (H)*

August – Wed 13 (8.30) Branch meeting. Blue Anchor,

Blendon. - **Fri 29-Sun 31** Hop Festival, Faversham.

September – Wed 10 (8.30) Branch meeting. Dukes Head,

Crayford. - **Sat 27** Visit to Shepherd Neame brewery (tbc) *Website: www.camrabexleybranch.org.uk*

CROYDON & SUTTON. *Terry Hewitt 020-8660 5931*

(H), 020-7918 3242 (W)

August – Tue 5 (8pm) GBBF Olympia social. Meet at Young's Bar. - **Wed 20** (8.30) Social, Princess Royal, Longley Rd., Croydon. - **Tue 26** (8.30) Branch meeting. Dog & Bull, 24 Surrey St., Croydon.

September – Wed 3 (8.30) Social. Sir Julian Huxley, Selsdon.

- **Tue 16** (8.30) Social. Little Windsor, Greyhound Rd., Sutton. - **Thu 25** (8.30) Branch meeting. Windsor Castle, 378 Carshalton Rd., Carshalton.

Website: www.croydoncamra.org.uk

EAST LONDON & CITY. *Bob Walker 07957 793360*

(M). *Social contact: Eric Barron 07779 269442 (M)*

August – Tue 12 (8pm) Branch meeting. Anchor & Hope, 15 High Hill Ferry, E15. - **Sun 17** (12.30ish) Lunchtime social, Grapes, 76 Narrow St, E14. - **Thu 21** (8pm) Social, Jerusalem Tavern, 55 Britton St, EC1.

September – Thu 4 (8pm) Social, Duke of Edinburgh, 79 Nightingale La, E11. - **Tue 9** (8pm) Branch meeting. Ye Old Ely Mitre Tavern, 1 Ely Court, off Ely Pl, EC1. - **Tue 16** (8pm) Social. Butcher's Hook & Cleaver, 61 West Smithfield, EC1.

- **Sat 20** Reading pub crawl. Meet 10.15am Paddington Station. - **Thu 25** September (8pm) Social. Miller's Well.

Website: www.pigsear.org.uk

ENFIELD & BARNET. *Brian Willis 020-8441 1892 (H)*

Work: Brian.Willis@Saffery.com

August – Wed 6 Branch Social and **Thu 7** Young members social at GBBF. For details of both contact James Francis 07775 527405 or e-mail enfieldandbarnetcamra@yahoo.com - **Thu 14** (8pm) Presentation of Enfield Pub of the Year.

Picture Palace, Lincoln Rd, Ponders End EN3. - **Mon 18** (8pm) Herts Ale Trail. Pre booking essential, contact Tony Roberts 020 8482 9673 (H) or e-mail

anthonywroberts@hotmail.com - **Wed 20** (8pm) Presentation

of Branch Pub of the Year. Lord Nelson, West End Lane, Barnet EN5. - **Sat 30** (4pm) BBQ. Orange Tree, Highfield Rd, Winchmore Hill N21 (food till 7pm). - **Wed 27** (9pm) New members social. Griffin, High Rd, Whetstone N20.

September – Tue 2 (9pm) New members social. Old Wheatsheaf, Windmill Hill, Enfield EN2. - **Sat 6** Ramble. Details contact Brian. - **Wed 10** (8.30) Branch meeting. St Monicas Social Club, Cannon Hill, Southgate N14. - **Sat 13** Visit to Chappel Beer Festival, Essex. Meet at Liverpool St station for 10.47 train, change at Marks Tey. - **Tue 16** (9pm) Social. Three Horseshoes, High Rd, Whetstone N20. - **Fri 19** Herts Ale Trail. Contact Tony Roberts as above. - **Thu 25** (9pm) London Drinker pick up. Moon under Water, High St, Barnet EN5.

Branch members can join news group by e-mail to camraenfieldandbarnet-subscribe@yahoo.co.uk

Website: camranorthlondon.org.uk/enfieldandbarnet

KINGSTON & LEATHERHEAD. *Clive Taylor 020-8949*

2099 (H) 020-8540 1901 (W)

August – Sat 2 (7.30) Barbecue at Willoughby Arms, Willoughby Rd, Kingston. - **Wed 13** (8.30) Branch meeting, Royal George, Hersham Rd, Hersham. - **Fri 29** (8.30) Joint beer festival social with Richmond & Hounslow Branch. Lion, Wick Rd, Teddington.

September – Wed 3 (8.30) Branch meeting, Worcester Park, Park Terrace, Worcester Park. - **Sat 13** Pub walk from Gomshall to Chilworth, catching 10.02 train from Surbiton. Let Clive know if you intend to go. - **Tue 16** Presentation of Surrey Pub of the Year award. Royal Oak, Wood St, nr Guildford. It is hoped to arrange a minibus from Guildford Station. - **Sat 27** Trip to Ballards Brewery, Nyewood, nr Petersfield. More details and booking from Clive.

NORTH LONDON. *Social contact: Mike Rose 07986*

458517, lynnmikeros@aol.com; Branch contact: Mick Lewis 020-7935 1350 Mob. 07952 24687 orientmoran@yahoo.com

September – Mon 1 (8pm) Social. Wenlock Arms, 26

Wenlock Rd, N1. *Website: www.camranorthlondon.org.uk*

RICHMOND & HOUNSLOW. *Brian Kirton 020 8384*

7284 (H), BrianPKirton@aol.com

August – Tue 5 (6pm) Social at GBBF, Olympia. Meet in front of the Fuller's bar. - **Wed 13** (8pm) Twickenham Festival publicity and West London Pub Guide surveying crawl in Hampton/Hampton Hill. Start (8pm) Jolly Coopers, 16 High St, Hampton, then Hampton Hill incl. (9pm) Star, 8 High St; (9.45) Jenny Lind, 80 High St; (10.30) Roebuck, 72 Hampton Rd. - **Tue 26** (8.30) Branch meeting, Cross Lances, 236 Hanworth Rd, Hounslow, including final voting for Branch Pub of the Year 2003. - **Fri 29** (8pm) Beer festival social. Lion, 27 Wick Rd, Teddington - up to 30 ales ordered.

September – Thu 4 (8pm) Inter-Branch darts challenge night at Ealing Lawn Tennis Club, Daniel Rd (off Creffield Rd), W5, near Ealing Common tube; all welcome to make up teams of 4. - **Mon 8** Twickenham Festival publicity crawl in Brentford. Start (8pm) Maggie & Crown, 128 High St, then incl. (9pm) Beehive, 227 High St; (9.30) Brewery Tap, Catherine Wheel Rd; (10.15) Express Tavern, 56 Kew Bridge Rd. - **Thu 18** Another publicity crawl in Isleworth. Start (8.15) Castle, 18 Upper Sq, then (9pm) Swan Inn, 1 Swan St; (9.30) Town Wharf, off Swan St; (10.15) London Apprentice, 62 Church St. - **Mon 22** (8.30) Branch meeting, El Pie, 9 Church St, Twickenham. - **Sun 28** (12 noon) Visit to Kew Gardens (meet at side gate in Kew Rd.) particularly for the Young's brewing display (samples and dray-ride available), adjourning at 4pm to the Coach & Horses, 8 Kew Green (note: admission to Gardens £7.50).

Website: www.jobin.freesev.co.uk/rbcamra1.htm

SOUTH EAST LONDON. *Richard Martin 020-8402 0424*

Website: www.selcamra.org.uk

SOUTH WEST ESSEX. *Andrew Clifton 01708 765150 (H), swessex@clara.co.uk*

August - Sat 9 (12noon approx) Out of Area social with coach to Lower Red Lion, 34-36 Fishpool St, St Albans. Coach from Chadwell Heath, Romford, Upminster and Stanford le Hope. Contact Graham Platt on 020-8220 0215 or Anne Radley on 01708 250146. - **Tue 12** (8:30) Cribbage social. Prince of Wales, 199 Roman Rd (B1002), Mountnessing. - **Thu 21** (8:30) Social. Eva Hart, 1128 High Rd (A118, corner of Station Rd), Chadwell Heath; it's Curry Night so those who want to eat may want to come earlier. - **Tue 26** (8:30) Social. Chequers, Jnet North St and Billet La, Hornchurch (nr Emerson Park Station).

September - Thu 4 (8:30) Jan's Birthday Social. Foxhound, 18 High Rd (B188), Orsett. - **Wed 10** (8pm) Social at Chappel Beer Festival, East Anglian Railway Museum, Chappel & Wakes Colne Station (For further details see website www.earm.co.uk) - **Tue 16** (8:30) Out of Area social, Queens Head, Queens St (by B184), Fyfield. - **Thu 25** (8:30) Soc, Old Dog Inn, Billericay Rd, Herongate Tye. *Website: www.swessex.clara.net*

SOUTH WEST LONDON. *Mark Bravery 020-8540 9183*

(H) 020-7438 6565 (W), markbravery@blueyonder.co.uk.

Cricketer: Andy Robinson 020-8653-8885 (H)

August - Wed 20 Wimbledon Common social. Meet (7.30-8pm) Hand In Hand, 7 Crooked Billet SW19, then (8.30-9pm) Crooked Billet, 15 Crooked Billet.

September - Mon 1 (7.30) Open branch committee meeting, including (8 pm) SPECIAL GENERAL MEETING for adoption of branch constitution. Hogshead, 68-70 Streatham High Rd, SW16. Buffet provided. - **Thu 18** Two pub social. Meet (7.30-8pm) Angel, 11 High St, Roehampton SW15, then (8.30-9pm) Green Man, Putney Heath.

Website: www.swlcamra.org

WATFORD & DISTRICT. *Andrew Vaughan 01923*

230104, watfordcamra@hotmail.com

August - Fri 8 Great British Beer Festival social. Meet at the Membership Stand on the hour after 6pm. - **Thu 14** Oxhey social. (8.30) Railway Arms, (9.30) Victoria - **Wed 20** Mill End social. (8.30) Happy Man, (9.15) Bell, Book & Candle. - **Wed 27** Bushey Crawl. (8.30) Queens Arms, (9.15) King's Head, (10pm) Black Boy

September - Mon 1 (8pm) Committee meeting, Estcourt Arms, Watford. Contact Branch to confirm venue and time. - **Tue 9** Maple Cross area. (8.30) Royal Oak, West Hyde, then (9.30) Dumb Bell, Hornhill. Meet 8.15 at Watford Junction for cabs. - **Wed 17** Watford social. (8.30) Horns, (9.15) Southern Cross, (10pm) Nascot Arms,

Website: www.watfordcamra.org.uk

WEST LONDON *Alasdair Boyd (Social Secretary) 020-7930 9871 Ext 143 (2.30 to 3.15 Mon to Fri)*

banqueting@nlc.org.uk Fax: 020 7839 4768

August - Wed 6 Social at GBBF Meet at Scottish Bar from 7pm. - **Mon 11** W1 crawl. (7pm) Thornbury Castle, 29A Enford St; (7.30) Bricklayers Arms, 6 New Quebec St; (8pm) Carpenter's Arms, 12 Seymour Pl, (9pm) Golden Eagle, 59 Marylebone La. - **Mon 18** Social. (8pm) Radnor Arms, 247 Warwick Rd, W14. - **Wed 27** Branch meeting. (7.30) Carpenters Arms, 12 Seymour Pl, W1 (upstairs in the Function Room).

September - Fri 5 Tour of Fitzrovia. (7.30) One Tun, 58 Goodge St; (8pm) Hope, 15 Tottenham St; (8.30) Duke of York, 47 Rathbone St; (9pm) Jack Horner, 234/6 Tottenham Court Rd. - **Mon 8** (8pm) Quiz Night. Carpenters Arms, 12 Seymour Pl, W1 in the upstairs function room. - **Mon 15** SW1 Belgravia & elsewhere. (7pm) Antelope, 22 Eaton

Terrace; (7.30) Duke of Wellington, 63 Eaton Terrace; (8pm) Bag O'Nails, 6 Buckingham Palace Rd; (8.30) Cask & Glass, 39 Palace St; (9pm) Buckingham Arms, 63 Petty France. - **Tue 23** (8pm) Branch Pub of the Year. Star Tavern, Belgrave Mews West (off Halkin Place), SW1.

WEST MIDDLESEX. *Paul Dabrowski (Social Secretary)*

020-8571-9146 (H) 0118-923 7445 (W).

August - Tue 5 (6pm) GBBF Social. Meet at entrance to Olympia National Hall, Hammersmith Rd, W14. - **Wed 13** (8.30) Branch meeting - Load of Hay, Villier St, Uxbridge. - **Thu 21** (8pm) West Ealing two-pub social. Coach & Horses, Uxbridge Rd, then Drayton Court Hotel, The Avenue. - **Mon 25** (noon) Harefield crawl. Spotted Dog, Swan, King's Arms, Pickle Jar and White Horse (approx onepub every 45 minutes). - **Fri 29** (8pm) Joint Beerex social with Richmond & Hounslow. Lion, Wick Rd, Teddington.

September - Thu 4 (8pm) Darts Challenge/Joint social with Richmond & Hounslow and West London Branches. Ealing Lawn Tennis Club, Daniel Rd, off Creffield Rd, Ealing Common. - **Wed 10** (8.30) Branch meeting, Jolly Gardeners, High St, Cranford. - **Tue 16** (8pm) Joint Club of the Year presentation. Questor's Grapevine Bar, Mattock La, Ealing. - **Thu 25** (8pm) London Drinker distribution. Maggie & Crown, High St, Brentford (pick-up) then Fox, Green La, Hanwell (drop-off). - **Sun 28** (noon) Young's brewing display, sampling and dray rides. Kew Gardens Side gate, Kew Rd, Richmond. (Admission £7.50).

Electronic copy deadline for the October/November edition: 10th September 2003. Please send entries to geoff@coherent-tech.co.uk.

LOWER RED LION



**36 Fishpool Street,
St Albans AL3 4RX**

Tel: 01727 855669

*Draught Czech and Belgian beers
Belgian bottles and Malt Whiskies
www.LowerRedLion.com*

AUGUST BANK HOLIDAY

BEER FESTIVAL

**Friday 22nd to
Monday 25th August**

Comfortable B&B
Quiz night Wednesdays

Lunch time meals
Sunday Roast lunch

The aim of 'Capital Pubcheck' is to share information about the latest happenings on the London pub scene including new pub and bar openings, name changes, acquisitions, closures, notable changes to beer ranges etc.

Information is gathered from a variety of sources including London Drinker readers, individual CAMRA members and branch contacts, breweries, pub operators, landlords etc. If you would like to contribute to 'Pubcheck' please send your news to the address below.

A bumper period for pub losses with no fewer than 26 being confirmed, concentrated in the more affluent parts of SW and W London where demolitions for redevelopment or conversions to 'luxury' housing or upmarket restaurants predominate. Pubs in Kensington & Chelsea Borough seem particularly vulnerable. Also included in these losses is Young's 'Castle' in SW15, Putney and Fuller's 'Pavours Arms' in SW1 Westminster. Three more Fuller's pubs in Brentford, Hanworth and Hounslow have been sold to a property developer and, although still trading (now without real ale), are not expected to remain 'viable' for long, paving the way for planning applications to Hounslow Council for more lucrative uses.

These losses do not include closures where future use is uncertain, as in the case of the unique French brewpub in WC2 Covent Garden which ceased trading in May and is for sale, leaving just four operational brewpubs in London.

On a more positive note, Shepherd Neame have acquired three pubs in EC1 Goswell Road, WC2 Shaftesbury Avenue and Hampton Court. Wetherspoons have opened another bar at Heathrow Terminal 1, this time a new concept, 'Wetherspoon Express' bar cum sandwich bar on the airside. A new pub in Teddington featuring

real ale is proving popular and the well respected Fitzgerald pub chain from Newcastle has acquired its first known London pub in SW10 off Fulham Road.

A new CAMRA Guide covering pubs and bars within the Royal Borough of Kingston was published by Kingston & Leatherhead Branch in June 2003. It covers postal districts in the outer parts of SW London including Chessington (KT9), Kingston (KT1/2), New Malden (KT3), Surbiton (KT5/6) and part of Worcester Park (KT4). All pubs are listed irrespective of current real ale availability (excluding closed pubs). Any additions, deletions or renamings not already reported in *Capital Pubcheck* are included in the listings below. Cross references to pubs in the new guide will be included in *Capital Pubcheck* as from the next edition of *London Drinker* but for completeness will also continue to refer to the current comprehensive South West London guide.

Cross references to CAMRA's various pub guides covering Greater London are provided to enable easy updating. The numbers in brackets after each entry refer to the page numbers in the following guides: E - East London & City Beer Guide, 3rd edition; H - Hertfordshire Guide to Real Ale, 2000 edition; HB - Holborn & Bloomsbury Pub Guide; K - Guide to Kent Pubs, 10th edition; 8K - Real Ale Guide to Kent Pubs, 8th edition; N - North London Beer Guide, 3rd edition; SE - South East London Pub Guide, 4th edition; 3SE - South East London Pub Guide, 3rd edition; SW - South West London Pub Guide, 2nd edition; W - Real Beer in West London; X - Essex Beer Guide, 9th edition.

If you would like to report changes to pubs or beers, please write to: Capital Pubcheck, 2 Sandtoft Road, London SE7 7LR or e-mail: capitalpubcheck@hotmail.com.

NEW & REOPENED PUBS & PUBS CONVERTED TO REAL ALE

EAST

E4, HARVESTER, 175 New Rd. No real ale. New build 'Mitchells & Butlers' (formerly Six Continents, originally Bass) single storey Harvester pub and restaurant in 'rustic' style with brick and timber cladding and pitched roof. Opened in 2001 but not previously reported. Large car park and family friendly but real ale appears no longer to be offered in Harvester outlets. Adjacent to new Larkwood leisure centre.

E6, INN XS SPORTS BAR, XS Superbowl, 15-17 Alpine Way. No real ale. Free House/bar attached

to bowling alley.

E11, THATCHED HOUSE, 245 High Rd. Renamed ALL SEASONS and reopened as a pub after a spell as a Latin American restaurant and tapas bar. No real ale. (E130, U125, U156, U160, U168)

HORNCHURCH, RAILWAY HOTEL, Station Lane. Draught Bass; Fuller: London Pride; Greene King: IPA. Now badged by Mitchells & Butlers (ex-Bass) as part of Ember Inns estate. (X71, U151, U163)

NORTH WEST

NW1, LAUREL TREE, 113 Bayham St. Courage: Directors Bitter. Reopened. (N169, U156)

SOUTH EAST

SE1, BERMONDSEY KITCHEN, 194

Bermondsey St. No real ale. New Free House/pub and restaurant on ground floor of new office block.

SOUTH WEST

SW10, HOLLYWOOD, 45 Hollywood Rd.

Reverted to **Hollywood Arms**. Courage: Best Bitter; Taylor: Landlord; Wells; Bombardier. Reopened after 18 months and now a Free House run by the Fitzgerald pub group based in Newcastle, as a pub and dining place, ex S&N. Refurbished to a high standard with comfortable stylish furniture, wooden floors, mirrors and glasswork. Rear extension (occupying the former garden) is a no smoking/dining area. Upstairs is a cocktail bar and function room. Beers may vary. Open all permitted hours. (SW85, U167)

CHESSINGTON, ACE OF CLUBS, Garrison Lane. Renamed **BUNKERS BAR**. Young: Special. (SW134, U132)

CHESSINGTON, BLACKAMOORS HEAD, 116 Moor Lane. Fuller: London Pride (reinstatement) (SW134, U167)

KINGSTON, BARCADIA, Greencoat House, 167 Clarence St. No real ale. Small Free House/bar in former Italian restaurant premises, opened c. 2002.

KINGSTON, HOTEL ANTOINETTE, 26 Beaufort Rd. Draught Bass. Small Free House/lounge bar in hotel, open to non-residents. Food.

KINGSTON, JD'S CAFE BAR, 15 Penrhyn Rd. No real ale. Small Free House/bar.

KINGSTON, OCEANA, 154 Clarence St. No real ale. Free House/bar attached to nightclub.

KINGSTON, OLD ORLEANS, Unit 1, The Rotunda, Clarence St. No real ale. S&N run bar and restaurant in new leisure complex.

KINGSTON, TGI FRIDAYS, Bentalls Shopping Centre, Wood St. No real ale. New build Laurel (ex-Whitbread) bar and restaurant.

SURBITON, CORKY'S, 12 Claremont St. No real ale. Free House/bar in former shop premises opened c. 1999/2000 but not previously reported.

WEST

W11, METROPOLITAN, 60 Great Western Rd. Adnams: Bitter; Fuller: London Pride. Now Mitchells & Butlers (ex-Bass). (W88, U89)

HEATHROW AIRPORT, WETHERSPOON EXPRESS, Rotunda Building, 'Dublin' Departure Lounge. Near Gates 80-92 Terminal 1 (Airsides).

Courage: Directors (£2.49/pint); Fuller: London Pride (£2.49); Shepherd Neame: Spitfire (£2.99). New small Wetherspoon bar opened late June in former pizza restaurant unit. It is a half café, half bar operation, featuring sandwiches and cakes as well as the normal bar fare. Metal roof and glazed frontage with a mixture of tables and chairs and circular bar. An additional separate smaller bar-kiosk annexe is located near Gate 89 and also badged as 'Wetherspoon Express', but has no real ale. Main bar opens daily 6am - 9.30/10pm (last flight); annexe closes about an hour earlier. The brand name 'Wetherspoon Express' is apparently to be used for all airport and railway station outlets in future.

TEDDINGTON, TEDDINGTON ARMS, 38/40 High St. Adnams: Bitter; Fuller: London Pride; Greene King: Abbot Ale; 3 Guest beers. New Free House opened March 2003 in former Italian restaurant premises. Furnished in predominantly modern style but with more traditional dark wood panelled no smoking/dining area to rear. Pictures and prints adorn the walls. Good food in restaurant area from set menus with daily specials on blackboards, and also throughout pub until 10pm (except weekday afternoons). Immediately popular with all age groups, handpumps have increased from 4 to 6 since opening. Open 12-11 Mon-Sat, 12-10.30 Sun.

PUBS CLOSED OR CEASED SELLING REAL ALE

EC1, CLOAK & HABIT, Free House, now converted to 'Meson Los Barriles' tapas bar and restaurant. Formerly MORGANS DINER/OCEANS. Originally BIG CITY BRASSERIE. (U44, U54, U70, U92, U107, U152)

W1(S), DE HEMS (CAFE BAR), ex-Whitbread, H removed. (W42, U53, U146, U151)

WC2, BRASSERIE LES SANS-CULOTTES, French brewpub and restaurant closed and lease for sale after 18 months trading - future uncertain. Formerly HENRY'S. The sad failure of a unique venture offering natural French style beers in Britain. Unlike many countries on the continent and in North America where brewpubs are thriving, the UK now seems unable to make a go of them, despite having pioneered the concept. Of course, the destruction of the Firkin brewpubs by Bass and Punch has hardly inspired confidence in their future here. (U92, U164)

EAST

E4, WHEELWRIGHTS, Laurel, ex-Whitbread (Beefeater), demolished to make way for new

CAPITAL PUBCHECK - UPDATE 172

housing. The loss of another large and prominent suburban roadhouse whose gardens and car parks are so attractive to developers. (E97, U159)

E6, GOLFER, Free House, demolished. (E104, U163)

E6, PERSEVERANCE, Free House, closed. (E104)

E15, CHARLESTON, ex-Bass, now demolished. (E152, U153)

BARKING, WHITE HORSE, Greene King, no real ale. Formerly WHITE HORSE (PICKLED NEWT). (X12, U153, U159)

CHADWELL HEATH, COOPERS ARMS, S&N, H removed. (X27)

ILFORD, OVERDRAFT, Free House, closed and absorbed back into cinema of which it was once the foyer. (U151)

WOODFORD GREEN, CASTLE, Mitchells & Butlers (ex-Bass), H removed. Now a Harvester pub and restaurant but retains original name. (X131)

NORTH

N13, INN ON THE GREEN, Free House, no real ale. (N115, U108, U109)

SOUTH EAST

SE11, QUEENS HEAD, ex-Courage, no real ale. Now more of a cafe-bar than a traditional pub. (SE109)

SE18, WELLESLEY ARMS, ex-Belhaven, now in use by 'Pillars of Truth Ministries' for religious purposes. (SE175, U103, U116, U167)

BECKENHAM, RAT & PARROT, S&N, closed and boarded up. Formerly THREE TUNS. (3SE205, U53, U107, U122)

SOUTH WEST

SW1, PAVIOURS ARMS, Fuller, closed May 2003 and awaiting demolition along with the whole block for redevelopment for flats and shops. The loss of one of the few pubs in London with surviving art-deco features, which appears to have escaped the notice of Westminster City Council when planning permission was granted. (SW49, U137)

SW3, MAN IN THE MOON, S&N, converted to 'Eight over Eight' cocktail bar and restaurant, with no draught beers. The loss of yet another Chelsea institution – at one time the haunt of Christine Keeler of '60s Profumo scandal fame. Upstairs theatre gutted, so are we. (SW57)

APPLICATION TO JOIN CAMRA

I/We wish to become members of the Campaign for Real Ale Limited and agree to abide by the Memorandum and Articles of Association of the Campaign.

Name(s) _____

Address _____

Postcode _____

Signature _____ Date _____

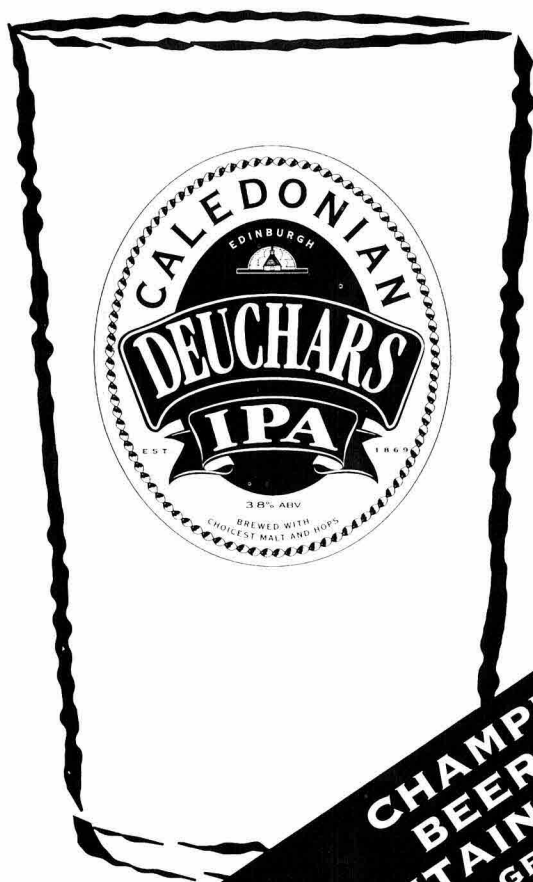
I/We enclose the remittance for individual/joint membership.

	Individual Annual	Joint Annual	Individual Life	Joint Life
UK and EEC	£16 <input type="checkbox"/>	£19 <input type="checkbox"/>	£192 <input type="checkbox"/>	£228 <input type="checkbox"/>
Rest of the World	£20 <input type="checkbox"/>	£23 <input type="checkbox"/>	£240 <input type="checkbox"/>	£276 <input type="checkbox"/>
Under age 26	£9 <input type="checkbox"/>	Date of birth _____		
Unemployed/Disabled	£9 <input type="checkbox"/>			
OAP	£9 <input type="checkbox"/>	£12 <input type="checkbox"/>	£108 <input type="checkbox"/>	£144 <input type="checkbox"/>

Send your remittance (payable to CAMRA Ltd) to:
Membership Secretary, CAMRA Ltd, 230 Hatfield Road, St Albans, Herts AL1 4LW



YOU'RE DUE A DEUCHARS.



**CHAMPION
BEER OF
BRITAIN ~ 2002**
CAMRA GBBF, OLYMPIA

CALEDONIAN BREWERY, EDINBURGH

SW3, MARLBOROUGH ARMS, Laurel (ex-Whitbread), now converted to 'Tom Aikens' expensive restaurant (SW37, U164)

SW3, MOORE ARMS, ex-Allied, now being converted to two houses. (SW57, U167)

SW3, PITCHER & PIANO, Wolves & Dudley, closed - future uncertain. (U137)

SW3, SHUCKBURGH ARMS, S&N, closed and converted to 'Baker & Spice' upmarket pastry shop. Retains painted over pub signage. Was **FINNEGANS WAKE** for a while. (SW56, U129, U135)

SW9, QUEEN, ex-Bass, H removed. (SW83, U141)

SW10, FINBOROUGH ARMS, Laurel (ex-Whitbread), H removed. Complete makeover with emphasis on wine and food. Theatre remains. (SW84)

SW10, MAGPIE & STUMP, ex-Bass, converted to Nicolas wine shop and 'Bar du Vins' wine bar. (SW85, U151)

SW10, PITCHER & PIANO, Wolves & Dudley, now converted to 'Zilli' pizza restaurant. (SW85, U71)

SW11, SOMERS ARMS, ex-Inntrepreneur, now demolished. (SW90, U157, U159)

SW15, CASTLE, Young, demolished as part of a comprehensive redevelopment scheme which is expected to include a pub. (SW100)

SW16, WILLIAM IV, Laurel (ex-Whitbread), closed and reputedly sold for redevelopment. A pub has apparently stood on this site for over 300 years. (SW108, U153)

KINGSTON, ARTFUL DODGER, S&N, no real ale. (SW140, U140)

KINGSTON, BRITISH OAK, Punch (ex-Allied), no real ale. (SW140, U132)

KINGSTON, BULL & BUSH, ex-Ascot, no real ale. (SW140, U140)

KINGSTON, CAMBRIDGE ARMS, ex-Inntrepreneur, now demolished and new flats under construction on site. (SW140, U140, U160, U164)

KINGSTON, DUKE TAVERN, ex-Inntrepreneur, still closed and boarded up. (SW141, U140, U163)

KINGSTON, FIGHTING COCKS, Free House, no real ale. (SW142, U144)

KINGSTON, LAMB, Shepherd Neame, now converted to residential use. (SW143, U145)

KINGSTON, OUTRIGGER, Free House, demolished in 2002. (SW144)

KINGSTON, TWO BREWERS, Free House, now

demolished, site vacant. (SW144, U156)

KINGSTON, WHITE HORSE, ex-Inntrepreneur, now demolished to make way for offices and residential use. (SW144, U150, U164)

MITCHAM, HOP PICKERS, Enterprise Inns, closed and for sale following murder. (SW146, U146, U149)

SURBITON, BLUE ANGEL. Reverted to **ANGEL**, ex-Inntrepreneur, no real ale. (SW160)

SURBITON, RAILWAY TAVERN, Free House, now demolished and replaced by flats. (SW162, U153)

SURBITON, RISING SUN, ex-Bass, no real ale. (SW162, U140, U145)

SURBITON, SAUCY KETTLE, Free House, no real ale. (SW163)

WEST

W2, DANIEL GOOCH, S&N, H removed. (W58, U71, U107)

W9, BIDDY MULLIGANS, Greene King, now converted to residential use. Formerly **EARL OF DERBY**. (W83, U98, U117, U137, U156)

W10, WESTERN ARMS, ex-Whitbread, H removed. (W86, U74)

W11, BRIDPORT ARMS, ex-Whitbread, converted to residential use. Formerly **TOPS** for a while. (W90, U64)

W11, DUKE OF CLARENCE, ex-Bass, demolished. Another large, prominent pub lost - for many years a stalwart of real ale in West London. (W87, U71)

W11, JAC'S, Free House, converted to 'Lonsdale' restaurant. Formerly **BOOM BOOM** and **VIP BAR**, originally **BOLTON ABBEY**. (W87, U92, U118, U131)

W11, SHEEP SHANK, ex-Watney, now confirmed demolished. (W90, U159)

BRENTFORD, POTTERY ARMS, Fuller, sold to development company, H unused. (W99)

HAMPTON COURT, LIONGATE HOTEL (BLACK OLIVE), ex-Whitbread, H removed. (W104, U94, U167)

HAMPTON COURT, MITRE,. Renamed **EDGE (THE)**, a bar-brasserie, Free House, H removed. (W104, U93)

HANWORTH, NEW MOON, Fuller, sold to development company, H unused. (W108, U101)

HOUNSLOW, EARL RUSSELL, Fuller, sold to development company, H unused. (W126, U89, U101)

HOUNSLOW, TANKERVILLE, S&N, closed

and sold to a development company. Two alternative planning applications submitted: one for conversion to dwellings retaining a small bar, the other for demolition and replacement by dwellings. Formerly BIG HAND MO'S for a while. (W128, U95, U98, U107, U147)

OTHER CHANGES TO PUBS & BEER RANGES

CENTRAL

EC1, PHEASANT. Reverted to **OLD IVY HOUSE**, -beers listed; +Shepherd Neame: Spitfire, Bishops Finger, seasonal beer. Acquired by Shepherd Neame from Punch Taverns in October 2002. Still retains polished floor and fans from its Firkin days. Good value food. Formerly **PHEASANT & FIRKIN**. (E22, U154)

EC4, HOGSHEAD, 12 Ludgate Circus. Renamed **HOG'S HEAD**, -beers listed; +Caledonian: Deuchars IPA; +Fuller: London Pride. Formerly **OLD KING LUD**. (E52, U83, U162)

WC2, BLOOMSBURY TAVERN. Now simply **BLOOMSBURY (THE)**, -beers listed; +Shepherd Neame: Bitter, Spitfire, Bishops Finger. Acquired by Shepherd Neame from Six Continents (ex-Bass) (Nicholson) in February 2003. Retains wood panelling, closed Sun. (W52, U151)

WC2, FAUN & FIRKIN. Renamed **BAT & BALL**, -beers listed; +Adnams: Bitter; +Fuller: London Pride. Formerly **LOCOMOTION**. (W55, U120)

WC2, SPRINGBOK BAR. Renamed **BOK BAR**, retaining South African theme. Still no real ale. Now owned by 'Wishing Well' pub group, ex-Old Monk. (U117, U119)

EAST

E4, PLOUGH, -guest beer; +McMullen: seasonal beer. Note correct address is Sewardstone Rd, E4, not Mott St (the address of the original Plough, now in residential use). (E96, U162, U166)

E6, HAMMERS, -beers listed; +Adnams: Broadside; +Fuller: London Pride; +John Smith: Bitter (E104)

E15, BACCHUS'S BIN, -beers listed; +Greene King: Abbot Ale only. (E152, U118, U131)

CHADWELL HEATH, GREYHOUND. Renamed **HARVESTER**. (X27, U161)

SEVEN KINGS, JOKER, -beers listed; +Greene King: IPA, Abbot Ale. (X105)

WOODFORD GREEN, ROSE & CROWN, -beers listed, +Draught Bass; +Fuller: London Pride. (X132)

NORTH

N8, HOGSHEAD. Now **HOG'S HEAD**, -beers listed; +Caledonian: Deuchars IPA; +Fuller: London Pride. (U124)

N16, ROCHESTER CASTLE, +extended range of guest beers from micros and regionals. (N130, U160)

N20, GRIFFIN (SCRUFFY MURPHYS), +Adnams: Bitter; +Ind Cope: Burton Ale; +Wells: Bombardier; +Belgian beers in bottles. (N147, U110)

N22, PRINCE OF WALES. Renamed **PRINCE (THE)**. (N156)

ENFIELD EAST (EN3), SUN & WOOLPACK, -beers listed, +Adnams: Bitter. (N242)

NORTH WEST

NW8, JUNCTION TAVERN, -beers listed; +Fuller: London Pride; +Young: Bitter. Now a gastropub with emphasis on food. (N199)

ALPERTON, HUNGRY HORSE. Reverted to **PLOUGH**, -beers listed; +Greene King: IPA. (W96, U98, U108, U117)

SOUTH EAST

CROYDON, HOGSHEAD. Now **HOG'S HEAD**, -beers listed; +Caledonian: Deuchars IPA; +Fuller: London Pride. (U136)

WEST WICKHAM, OLD ANTHROPOLOGIST. Reverted to **WHEATSHEAF**, -beers listed; +Courage: Best Bitter; +Shepherd Neame: Spitfire; +Wells: Bombardier. (3SE288, U55, U107, U161)

SOUTH WEST

SW3, GROVE TAVERN. Renamed **BEAUCHAMP**, -beers listed; +Greene King: IPA, Abbot Ale; +Guest beer. Now a Free House and independently run, ex-Whitbread. Formerly **JJ MURPHY & CO'S** for a while. (SW56, U156)

SW4, MANOR ARMS, -beers listed; +Adnams: Bitter; +Black Sheep: Bitter; +Fuller: London Pride; +Taylor: Landlord; +Guest beer. (SW60, U146)

SW5, TOURNAMENT, -beers listed; +Fuller: London Pride only. (SW65)

SW9, PRINCE ALBERT, -Flowers: Original; +Draught Bass. Beer range may increase. (SW82)

SW9, Z BUD. Renamed **FAR SIDE**. Still no real ale. Formerly **GALLEONS**. (SW82, U155)

SW17, FREEDOM & FIRKIN. Renamed **GEORGE**. (SW109, U144, U151, U159)

CHESSINGTON, PORT OF CALL. Renamed **MAVERICK**, -Courage: Best Bitter, Directors

CAPITAL PUBCHECK - UPDATE 172

Bitter; +Greene King; Ruddles County. Formerly PICKLED NEWT (PORT OF CALL). (SW134, U132)

KINGSTON, BAR (THE). Renamed **WORKS BAR.** Still no real ale. Formerly PUZZLE.. (SW144, U155)

KINGSTON, BOATERS INN & BRASSERIE. Now simply **BOATERS INN.** (SW140, U168)

KINGSTON, NEWT & FERRET. Renamed **REFECTORY,** -guest beers; -cider. (SW143)

KINGSTON, RB'S. Correct address is Bucklands Wharf, Thameside, Kingston Bridge. Formerly **ROYAL BARGE.** (SW144, U143, U151)

NEW MALDEN, B-WON. Renamed **BOBOS,** -beers listed; +Fuller: London Pride; +Young; Bitter. (SW151)

SURBITON, VICTORIA, 143 Ewell Rd. Renamed **MAD HATTER,** -beers listed; +Fuller: London Pride; +occasional guest beer. (SW163)

WORCESTER PARK, WORCESTER TAVERN. Reverted to **WORCESTER PARK,** -beers listed; +Fuller: London Pride; +Young; Bitter, Special; +guest beers. (SW169)

WEST

W4, O'NEILLS AT MANOR TAVERN. Renamed **DEVONSHIRE HOUSE.** Revamped as a gastropub. Still no real ale. Originally **MANOR TAVERN.** (W69, U46, U94, U155)

W5, HOGSHEAD. Now **HOG'S HEAD,** -beers listed; +Caledonian; Deuchars IPA; +Fuller: London Pride. (W118)

W10, ADMIRAL BLAKE. Renamed **COWSHED,** still no real ale. (W86)

W11, FROG & FIRKIN. Reverted to **ELGIN,** -beers listed; +Adnams: Bitter; +Tetley: Bitter; +Wells: Bombardier. Badged by Spirit (ex-Punch) as part of 'Firkin Beer Co' chain. (W88, U92, U105)

W11, PORTOBELLO GOLD, -beers listed; +Brakspear: Bitter; +Shepherd Neame: Spitfire. (W88, U158)

W11, PORTOBELLO STAR, -beers listed; +Flowers: Original. (W88)

W12, BUSHRANGER, -beers listed except Fuller: London Pride; +Fuller: Chiswick Bitter, ESB, seasonal beer. (W91, U82)

W13, KENT (THE). Renamed **DUKE OF KENT** after refurbishment, +Adnams: Bitter; +Fuller: seasonal beer. Formerly **KENT HOTEL.** (W92, U86)

HAMPTON COURT, CARDINAL WOLSEY, -beers listed; +Shepherd Neame: Bitter, Best Bitter, Spitfire, seasonal beer. Former Free House acquired by Shepherd Neame. (W104, U94)

CORRECTIONS TO UPDATE 171

NEW PUBS ETC.

WC1, SOAS STUDENTS UNION BAR. Is a Free House

E16, FOX @ EXCEL. Add: Opened by October 2002.

PUBS CLOSED ETC.

EC3, CITY MONK. Add: Formerly SIMPSONS.

WC1 (Mar), BLACK HORSE. Should read **W1(Mar)**

WC1, KINGS HEAD. Should read Marr Taverns, ex-Bass

WC1, MOSKO. Add: H removed.

E6, BOLEYN TAVERN. Refs should read (E103, U78)

HAM, BREWERY TAP Pub name should read **HAM BREWERY TAP.**

OTHER CHANGES ETC.

EC4, OLD MONK. Address should read 10 Aldermanbury

W1 (May), HOGSHEAD. Delete entry, no change to name or beers as yet.

WC1, JOHNSTON'S (OF BLOOMSBURY). Formerly **DICKENS INN.** Refs should read (W46, U108, U109)

WC2, HOGSHEAD, 23 Wellington St. Delete entry, no change to name or beers as yet.

SW11, BAR ROOM BAR. Formerly **CLOCK HOUSE.**

W4, BOLLO HOUSE. Formerly **RAILWAY TAVERN**

IT'S JUST AS GRIM UP NORTH!

Watford, NEW VICTORIA, formerly **TANTIVY,** 91 Queens Rd. Closed and awaiting planning permission for demolition and development as flats.

Watford, LEVIATHAN, 151 St. Albans Rd. Renamed **CHAMPIONS BAR.** Handpumps removed.

Sarratt, CRICKETERS, The Green. Closed and undergoing redevelopment as restaurant.



CASK MARQUE UPDATE

Changes notified to CAMRA since the comprehensive list of Cask Marque pubs and clubs in Greater London was published in the April/May 2003 edition of London Drinker are listed below.

ADDITIONS

CENTRAL

EC1, FOX & ANCHOR, 115 Charterhouse St. Mitchells & Butlers. (E16, U83, U151)
WC1, ENTERPRISE, 38 Red Lion St. Mitchells & Butlers. (W46, U92, N22, HB7)

NORTH WEST

ALPERTON, PLOUGH, 253 Ealing Rd. Greene King, formerly HUNGRY HORSE. (W96, U98, U108, U117, U172)
HARROW, CASTLE, 30 West St, Harrow-on-the-Hill. Fuller. (W113)

SOUTH EAST

CROYDON, HOGS HEAD, 58/60 High St. Laurel, formerly HOGSHEAD. (U136, U172)

WEST

TEDDINGTON, TIDE END COTTAGE, 8 Ferry Rd. Greene King. (W147, U94, U98, U101, U117, U123)
TWICKENHAM, SORTING ROOM, 24 London Rd. Wetherspoon (Lloyds No 1). (U170)

Over 2,300 licensees have the Cask Marque award. The beer in their outlets has been independently inspected for beer quality.

Visit the Cask Marque Website

www.cask-marque.co.uk

and download a regional guide.

Why not visit a brewery?

www.visitabrewery.co.uk

Cask Marque - for the licensee who serves the 'perfect pint' of cask beer.

The Cask Marque Trust
Seedbed Centre,
Severalls Park, Colchester,
Essex CO4 9HT
Tel: 01206 752212



St GEORGE'S DAY EVENTS

celebrating England's culture, heritage and history

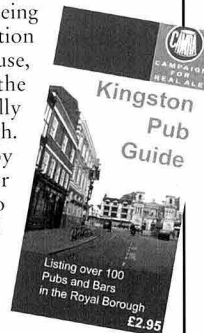
Open meeting, Wenlock Arms,
26 Wenlock Rd, London N1
(near Moorfields Eye Hospital)

St George's Day Events, a company limited by Guarantee, are meeting on Saturday 27th September, at the Wenlock Arms 12-2pm upstairs, to discuss making a bid for G.L.A. funds to run a cultural event in 2005, when St George's Day is a Sunday.

For more info, see our web site
www.stgeorgesdayevents.org.uk
Email: info@stgeorgesdayevents.org.uk

KINGSTON PUB GUIDE

Kingston and Leatherhead Branch published a guide to all pubs and bars in the Royal Borough of Kingston upon Thames to tie in with the recent Kingston Beer Festival. The guide was surveyed earlier this year, so is bang up to date and includes an article on the brewing history of Kingston as well as one on the general history of the area. Pubs recommended for the quality of their Real Ale are highlighted and many have photographs. The guide (cover price £2.95) is being sold at the Tourist Information shop in Kingston Market House, the Canbury Arms, the Willoughby Arms and hopefully other outlets in the borough. Copies can also be obtained by post by sending a cheque for £3.40, made payable to 'Kingston & Leatherhead CAMRA', to Kingston Pub Guide, 11, Albury Road, Chessington, Surrey, KT9 1QY.



HUGE CASH REWARD

Missing from the “**Pakenham Arms**”
Nº1 Pakenham Street, London WC1

Hundreds of gallons of real ales from the following breweries:-
Fullers, Slaters and Adnams.

All beers were of the very best quality - there seems no doubt that the parties who had partaken of these ales are well satisfied, as they would have returned (or at least complained) about them.

The Breweries have kindly replaced these missing ales so that they can be enjoyed by all Her Majesty's law abiding subjects, and any others who would like to imbibe in these fine ales during the months of August & September.

As from August...

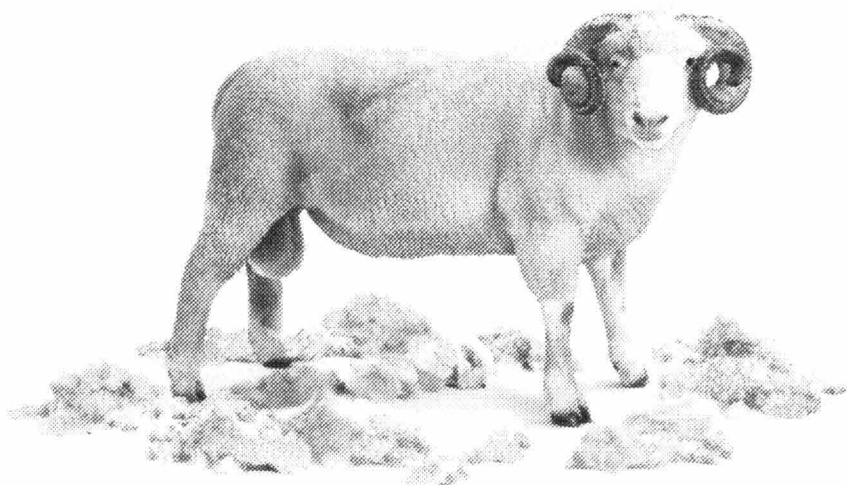
◆ **Both of the Real Ales from
Haggards Brewery**

Your Host - Pat Mulligan

(otherwise known as 'The Guvnor'!)

020 7837 6933





Natural

How would you describe the taste?

From the Ram Brewery Wandsworth



GOOSE BECOMES DUKE

The Duke of York, Borough Road, Southwark, London SE1 - formerly the Goose & Firkin, and recently acquired by Kent brewers Shepherd Neame - has undergone a major refurbishment with the aim of turning it into 'the ultimate beer pub.'

The pub was officially opened on 11th June by award-winning author and drinks journalist Andrew Jefford, who has presented the BBC Radio 4's *The Food* programme and writes columns for *The Evening Standard*. Robert Neame, brewery chairman, was also in attendance, and CAMRA was well represented when Andrew McGuinness won the Beer quiz!

Shepherd Neame have invested £130,000 in transforming the pub, which focuses on beer, in all its styles, as its prime customer offering. Shepherd Neame managing director Jonathan Neame said, 'The Duke of York represents a return to the classic pub, where we have made beer our product champion. Too many pubs have become little more than wine bars and restaurants. Britain has one of the world's great beer traditions, and it's about time brewers and retailers put beer back at the very centre of everything they do, and encouraged drinkers to increase their knowledge and enjoyment

of different types of beer. The Belgians do it - so should we!'

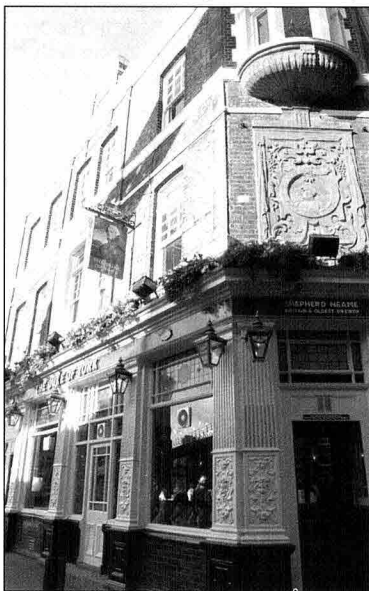
Duke of York customers can choose from the full range of Shepherd Neame ales, including the powerful Bishops Finger, Master Brew Bitter, and

the hugely popular Spitfire, as well as interesting foreign beers such as draught Leffe Blonde and Bellevue Kriek from Belgium, Wieckse Witte unfiltered wheat beer from Holland, and imported bottled beers including Duvel, Chimay Rouge and Bellevue Framboise.

Customers will be able to sample different beers by requesting a unique 'Taster Tray' of one-third pint glasses to encourage sampling, along with the traditional pints and halves. Also on offer is what is described as 'a simple menu of definitive pub dishes with a twist', such as sausages made with beer and giant square-cut chips.

The brewery has resisted the temptation to completely remodel the pub, and it retains

its previous layout but with a refurbished interior - stripped wooden floors, low seating and subdued lighting. The aim is to offer a 'relaxing environment'.



THE ARAB BOY, PUTNEY

The 154-years-old Arab Boy public house is a key landmark in the development of Putney as a residential suburb following the arrival of the London & South Western Railway and the opening of Putney Station in 1846. The pub was built in 1849 by Henry Scarth, a local solicitor, to serve the cottages and houses he had developed in the adjacent Parkfields and what is now Coalecroft Road.

The name The Arab Boy was chosen to honour Scarth's servant Yussef Sirrie, whom he had met and befriended whilst travelling abroad. It is said that Scarth saved Yussef from being sold into slavery. Yussef is believed to have eventually taken over the pub as landlord. He is interred in the old burial ground at Rocks Lane, Barnes.

Externally, the Arab Boy remains much as it was in 1849: a well-proportioned but unpretentious building ideally suited to its role as a

neighbourhood pub. It is thought that it is the only pub in Britain to bear that name. But had it not been for the timely intervention of some of its regulars, the name would have recently been discarded. The new licensee had taken it down, on the understanding that the pub was to be called the Old Chestnut Tree instead. Customers were not impressed, and lost no time in contacting the Brewery as well as local media.

Area Manager Steve Look not only looked but also listened. He had not known the history of the pub and there was simply no reason to swap a unique name for a naff one. Before the Wandsworth Borough News went to press, Greene King had confirmed that there were no plans to change the name of the Arab Boy.

Much of the above information comes from Putney and Roehampton Past, edited by Dorian Gerbold (Historical Publications Limited 1994).

KILBURN

It is the end of June. As a West Hampstead based ICAMRA member this is a worrying time. The Old Black Lion on West End Lane, one of only two pubs in West Hampstead that serves real ale, is closed for refurbishment. (the other is the Rat & Parrot. Unfortunately this falls foul of my policy never go into any pub with a bouncer on the door). A peak through the windows offers no clues as to what the next reincarnation will be like. A popular local, The Old Black Lion has a fighting chance of retaining its character and real ale although its owners must be tempted to target the young affluent crowd which are attracted to the area by the cafes and bistros which now predominate. It is not difficult to imagine stripped wooden floors, boeuf de vache with onion jus (roast beef to you and I), loud music, bottled lager and no real ale. It therefore seems an appropriate time to see what neighbouring Kilburn has to offer the discerning real ale drinker.

If estate agents had their way Kilburn would no longer exist in this gentrified part of London. The area to the west of Kilburn High Road is now known as Brondesbury and to the east there is West Hampstead. Kilburn seems to exist solely as the width of its High Road. Built originally by the Romans the High Road is dead straight which makes any pub crawl easy to navigate, the pubs quickly follow on after each other. In the North London Pub Guide published by CAMRA in 1987 the pubs in Kilburn were described as reflecting 'the large Irish population of the area and real ale is not a strong seller in many pubs'. It would therefore be interesting to see if this was still the case. At the northern end of the High Road is Kilburn tube, which seems as good a place as any to start. And I am off to a flyer.

It is a beautiful Sunday afternoon and heading south the first pub is the North London Tavern. A vast

pub which retains the traditional saloon and public bar. This is to prove a welcome feature of pubs in Kilburn. With the issue of smoking in pubs as hot as ever a pub with two bars provides an ideal smoking and non smoking division and in this respect it is a shame the trend is towards big vast single bar pubs. Back in the North London Tavern (top photo) the predominantly male, predominantly old clientele sit in silence drinking mainly Guinness but I am able to get a pint of London Pride, the only real ale on offer.

Opposite the North London Tavern is Power's Bar and Brondes Age (terrible pun) both bars rather than pubs and sadly neither serving real ale.



Further down the road McGovern's is air-conditioned which is a relief on such a hot day. Once again a public and saloon bar, 'The President's Lounge' no less, but alas no real ale.

Next up is the Zd Bar. Enough said.

Although this two bar pub does not serve real ale it is worth going to the Black Lion, opposite Zd bar, just to look at the ceiling and there is not many pubs you can say that about.

There is some Gaelic football on the television and everyone in the Sir Colin Campbell, just a bit further down from the Black Lion, is standing up to the playing of the Irish National anthem. I stick my head in the door and twenty pairs of eyes stare back. I note that there is no real ale and I am secretly relieved that I do not have to stay to sample a pint and move

swiftly on.

The prize for the most bizarre looking pub in Kilburn must surely be The Kingdom on the opposite side of the road to the Sir Colin Campbell. Part Chinese take-away part Jehovah Witness Meeting Hall this is another Irish pub serving no real ale. Why don't the Irish like real ale? I am getting thirsty now, I have only had 1 pint, so I decide to order half a pint of the black stuff and sit at a table to

PUB OF THE YEAR, CAMRA SW LONDON (2001)
2002 GREATER LONDON REGIONAL PUB OF THE YEAR

The Sultan

78 Norman Road, South Wimbledon, SW19 020 8544 9323
(off Haydons Road via De Burgh Road)

The only Hop Back pub in London

Annual Beer Festival

5 - 6 - 7 September

A selection of beers from around the country
plus a full range of Hop Back beers available

Barbecue all 3 days

*Cases of Entire Stout, Summer Lightning or
Thunderstorm only £19*

36 pint polypins from £48 & 18 pint minipins from £24

Special Hop Back seasonal brews each month

*Quiz night every Tuesday, starts 8.30pm from
September to the end of June*

Nearest tubes: Colliers Wood or South Wimbledon (5 mins walk)
buses: 57, 156, 200

watch the Gaelic football. If you can't beat them, join them. I ask Gerry who is at the next table why none of the Irish drink real ale. He looks at his pint then looks at me as if I have just landed from another planet 'coz its shite'. I make my excuses and leave.

Southern K is next up, an antipodean theme bar with no real ale so I move swiftly on.

The good news is the next pub serves real ale, the bad news is that it is The Goose which is on the same side of the road as Southern K. However, today I am grateful for a pint of real ale. Kilburn is turning out to be as barren as West Hampstead. I note that there are posters advertising real ale with the slogan 'Try Before You Buy'. How sad then that only Tetley and Tetley Imperial are available.

There was no real ale in The Coopers Arms, opposite the Goose, which is a shame because it felt a nice place to stay. It seemed a friendly enough place or else the local's team was winning the Gaelic football which was playing on the television.

It was three o'clock when I walked into The Cock Tavern although it felt like closing time on a Friday night. Another Irish pub another national anthem and more standing. I didn't loiter.

I am now nearly as far down as Kilburn Park tube and the Bridge has a sign outside claiming to serve real ale. It's a cruel trick as none are on offer so I cross the road to the Old Bell.

The Old Bell is part of the Smith & Jones group which means a clean if uninspiring interior and that the history has been ripped out of the place. Apparently this is where the IRA used to hatch plots watched from across the street by the Police. I took my pint of Courage Best into the surprisingly large beer garden. Although I felt like I was sitting in a car park I did notice how clean everything was, if a little uninspiring.

A sign that the Eastern Europeans are beginning to supplant the Irish from Kilburn was found in The Red Lion, next door to the Old Bell, which hosts a regular Polish Night. It was, however business as usual to see, as I walked in, an Irishman was being dragged out by his legs by the barman for drunken behaviour. Apparently there has been a pub on this site since 1444 so it was a shame that they served no real ale.

The Queens Arms is right at the bottom of the High Road although its feel was more Maida Vale than Kilburn. It's a Youngs pub situated in what looks like a fifties semi-detached house similar to the one I was bought up in. Inside it is tastefully decorated as you would expect from a Youngs pub with the usual choice of Youngs beer. I could tell the afternoon was slipping away when one of the punters approached two girls he had obviously never met before to tell

them how beautiful they were. At least that's what I think he slurred. They weren't.

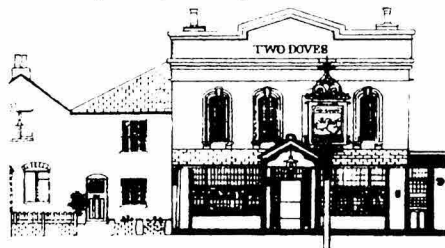
I decided to head back to West Hampstead via South Hampstead. Turning off Kilburn High Road down Belsize Road I saw the Priory Tavern. Don't tell the local residents but I think it is close enough to the High Street to be classed as Kilburn so I popped in and was delighted to find a roomy one bar pub with real ale, albeit a rather limited selection of just Courage Best. Still the pub had a good feel about it with a good mix of clientele, which is always a good sign. It was a good end to the day.

I was pleased to find so many pubs untouched for years with the big chains on the whole still being kept at bay. In this respect it reminded me of Camden of about 10 years ago. In the aforementioned North London Beer Guide the lack of real ale was bemoaned but CAMRA was still able to list 14 pubs which served real ale in the Kilburn area including many of the pubs I visited today. It is a sign of the times that today I found just five pubs which served real ale and only two of those pubs actually had a choice.

Simon Elliott

TWO DOVES

37 Oakley Road, Bromley Tel 020 8462 1627



A warm welcome awaits you in the relaxed surroundings of this friendly pub

PUB OF THE YEAR 2000
CAMRA SE London

Changing selection of Real Ales
CAMRA Good Beer Guide listed
Local Award Winner

Mature Clientele • Light Snacks

Bus 320 from Bromley North and Bromley South
railway stations, stops outside

Hours: 12-3, 5.30-11 Mon to Sat & 12-3, 7-10.30 Sun

The FOX

Green Lane Olde Hanwell London W7



Tel 020 8567 3912

- Timothy Taylors Landlord is our regular ale alongside London Pride and Brakspears. Plus ever changing Guest Ales
- Maggie's cooked food
- Contained pub garden
- 100 yards from Grand Union Canal
- Open 11am-11pm
Sundays 12-10.30pm

COMING UP
our popular guest-
Archers
Golden Bitter from
Swindon and
Brakspears Special

LAGRAD LONDON GROUP

LAGRAD (Lesbian and Gay Real Ale Drinkers) is a group of CAMRA members extending the Campaign to the lesbian and gay scene. All are welcome to all events. Contact the group convenor on LAGRAD@ukgateway.net or visit www.goldings.demon.co.uk/queerale/

August – Tue 5 (6pm) Great British Beer Festival, Olympia. Meet just behind the Young's stand, on the left as you come in the main entrance. - **Wed 6 (7pm)** Social. King's Arms, 23 Poland St, W1 (020-7734 5907). - **Fri 8 (6pm)** Great British Beer Festival, Olympia as above. - **Tue 19 (7pm)** Queen's Arms, 223 Hanworth Rd, Hounslow. Only one real ale, needs supporting.

September – Wed 3 (7pm) Social. King's Arms, 23 Poland St, W1. - **Thu 18 (7pm)** Princess Victoria, Earls Court Rd (nr. junction with Kensington High St). New pub to the gay real ale scene, with a single, but ever changing real ale.

BERNARD FLYNN

It is with great sadness that I have to report the death of one of the longest serving members of Richmond and Hounslow Branch of CAMRA, Bernard Flynn, on 9th June at the age of 78. Bernard joined the Campaign in 1977 and for a good number of years he was the Branch Treasurer, well and deservedly noted for his painstaking attention to detail as well as his friendliness to everybody; his smart appearance (even when he had been carting scaffolding etc. about while setting up beer festivals) and his youthful looks.

Talking of beer festivals, Bernard was seemingly a permanent fixture on the products stand which he ran at Feltham and (latterly) Twickenham beer festivals as well as at Battersea Beer Festival which he also ran for South West London Branch.

Before he retired, he worked for the Post Office as a supervisor who looked after the Sub Post Offices in the Twickenham area. Here he was also well liked and respected by those with whom his work brought him into contact - I know a few personally who confirm that this is true.

Sadly, in the last couple of years the effects of aging took their toll rather rapidly and unexpectedly and Bernard was no longer able to live at home; he passed away in a permanent care home. His funeral was held on 20th June at South West Middlesex Crematorium and was attended by a number of members of the Richmond and Hounslow Branch.

Our deepest sympathy at this sad time goes to Bernard's widow Jean, his two sons Peter and Andrew and their families.

Andy Pirson

A FINE TIME ON THE NORTHERN LINE

The Northern Line: its name is eternal; it shall live for evermore.

Connecting morose Morden in the south to existential Edgware in the north, the former 'misery line' offers its travellers the chance to experience the dubious delights of Colliers Wood, Clapham North, Kentish Town and the glorious Chalk Farm. How lucky we are!

It was with this preconception at the back of our minds that we set out on a crawl with pubs connected by the Tube on a fine June evening.

It wasn't just the evening that was fine...

First stop was stunning Stockwell and the multi-award-winning Priory Arms on Lansdowne Way. For those that know this oasis, you have been truly blessed by visiting a pub which shines as a beacon in the dark of South London's grey urban sprawl. Pete plumped for an unusual new beer, Beers of the Roundtable's Lancelot Ale which imparted a superb freshness despite being slightly cloudy while I went for an old favourite, Schlenkerla Rauchbier in bottle which was every bit as good as I remember. Indeed, they now stock two different bottled varieties of the smoked beer!

The pub is Cask Marque accredited and has a most friendly barmaid.

Back to the tube northbound, hopping off at London Bridge to visit the inestimable Shipwrights Arms on Tooley Street. A large-ish one-bar pub with an island bar, three ales were on: Caledonian's spiffing Deuchar's IPA, Oldershaw's Regal Blonde (which was in sparkling form) and Hook Norton Mendip Gold. Here we were engaged in conversation by not only the friendly barmaid but the landlady as well. It's a pub you can expect to be busier but which could also see a lot of fun. The exterior

decor is quite something including a partially-topless figurehead above the door and some interesting fascia work.

As it was a dry, warm evening, we decided to walk to our next stop, pausing to get some photos of the scene from London Bridge itself. Even to two born-and-bred Londoners, the view either way - especially towards Tower Bridge - is stunning. Ten minutes' walk onward and into the square mile which was winding down from another day of hustling. Leadenhall Market is a fascinating old-world area with some great pubs, the Swan Tavern

STATION ARMS

39 Station Road, Southminster, Essex. Tel: (01621) 772225

BEER FESTIVAL

FRI 22nd THRU TO MON 25th AUGUST

Fri: 5.30-11.00pm; Sat: Noon-11.00pm; Sun Noon-10.30pm;

Mon Noon-11.00pm

Up to 35 Real Ales

3 Traditional Ciders & Perries

• BBQ • Live Entertainment

- only 200 yards from Southminster railway station

**DENGIE
CAMRA
PUB OF THE
YEAR
2001**



A FINE TIME ON THE NORTHERN LINE

being our next stop. It's a small two-floor Fuller's place, decorated with cosy Victoriana and although the ground floor bar was closed, the upstairs bar dispensed some of the finest London Pride I've ever tasted. Even if Tony Fuller himself walked in and had some, he'd be obliged to admit that they get it bang on there.

Back to the tube and on to our final stop of the evening as time was against us slightly. North London is a bit like uncharted territory to me as I'm a south-westerner to my boots but the next stop was to be as much of a legend in the northern half of the metropolis as the Priory Arms is in the south.

I'd never visited the Wenlock Arms before, despite reading about it for a good few years in this very organ. Nothing can really prepare you for the Wenlock: in the middle of a run-down council estate and bordered by factories and warehouses, its very location is a challenge! The bar is U-shaped and the actual room is quite small. As you arrive there's an upright piano on your right which is played on a Sunday apparently. Somehow I feel that its keys rarely witness recitals of Bach, Mozart and Rachmaninov, being more familiar with the usual flacid, anaemic jazz played by ageing pillocks in bowler hats. To make matters worse, the pub was in the middle of its weekly quiz but these disadvantages aside, the range and variety of ale on was truly something else.

As it is a regular outlet for mild, I went for the Slater's Magic Monkey which was everything I look for in a mild: dark, rich and with that 'chewiness' that all good milds and porters have. It was just the ticket so I had to have two pints just to check the consistency, you understand?

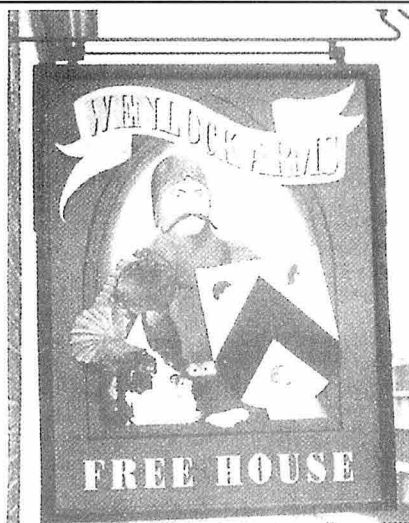
The night - unlike the Wenlock's beers - became slightly hazy after this as the general enjoyment and atmosphere kept the assembled enthralled.

A barman ushered us inside as the hour was getting late and the curtains were drawn. The clientele looked settled and one perceived that a good session was in prospect. We were reluctant to go but the tube home beckoned so we beat a reluctant retreat.

The Wenlock is not far from the famed Moorfields eye hospital and, to aid those patients arriving by tube, there is a broad green stripe painted on the pavement between the station and the hospital entrance. I can say with a degree of certainty that the stripe also assists those who have enjoyed the Wenlock for several hours!

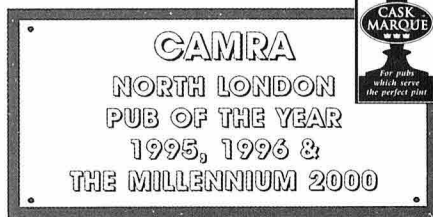
We are sure you could encounter a totally different set of pubs connected by the Northern Line, such is their multiplicity and variety. Why not try and do so soon?

Al Ferrier and Pete Harris



A genuine Free House featuring a selection of the very best in Cask Ales, Traditional Cider and Perry

- Mild always available
- La Trappe Trappist ale & Bitburger Pils both on draught
- Function room free to CAMRA members
- Thursday night is Quiz Night
- Jazz piano Sunday afternoons
- Jazz/Blues every Friday and Saturday evening
- Open daily from midday



**26 Wenlock Road
London N1**

020 7608 3406

Nearest Tube stations are Old Street (exit 1) and Angel. Wenlock Road is off City Road via Windsor Terrace
<http://www.wenlock-arms.co.uk/>

JUNE'S ANSWERS

As promised, here are the solutions to the puzzles set in June's Idle Moments column.

NUMBER PUZZLES:

- 15 Scores Two Points in Cribbage
- 7 Hills of Rome
- 1960 Summer Olympic Games Held in Rome
- 3 Laws of Motion by Isaac Newton
- 10 Degrees Celsius is Equal to Fifty Degrees Fahrenheit
- 868 Miles from Land's End to John O'Groats
- 4 Points for a W in Scrabble
- 13 Semitones in an Octave
- 80 Chains in a Mile
- 9 Holes on a Bar Billiards Table

BREWERY ANAGRAMS:

- BEAGLE CART GREAT GABLE
- WORD HEALS OLDERSHAW
- WIND FLIES WINFIELDS
- RESTS BREW BREWSTERS
- TAM IN THONG NOTTINGHAM
- SCALY FOLLIES ALES OF SCILLY
- PINING DONGS SPINNING DOG
- RENT DEW DERWENT
- ANY TRAGIC PUMP CAPTAIN GRUMPY
- HINT OF PEA FAINT HOPE

5BY4:

- How long they reigned
- Queen Victoria - 63 years
 - George I - 13 years
 - William I (The Conqueror) - 21 years
 - Richard III - 2 years
 - George III - 59 years
 - Henry VIII - 38 years
 - Queen Mary - 5 years
 - Richard I (The Lionheart) - 10 years
 - John - 17 years
 - Queen Elizabeth I - 44 years

GENERAL KNOWLEDGE:

"The World's Simplest Quiz"

- The Formula One San Marino Grand Prix run in Italy.
- The creatures after which the Canary Islands are named are Dogs (latin "canis").
- The Hundred Years War lasted 116 years.
- George VI's first name was Albert.
- Chinese gooseberries come from New Zealand; they are also called kiwi fruit.
- The Russians celebrate the October Revolution in November.
- The purple finch is Crimson in colour.
- Catgut is obtained from sheep or horses.
- A camel's hair brush is made from squirrel fur.
- Real Panama hats are made in Ecuador.

CAMRA South West London Pub of the Year 1992, 1994, 1996, 1998 2000 & 2002

**A constantly changing selection of ales from microbreweries -
over 2,500 different ales to date.**

**Adnams Bitter, Hop Back Summer Lightning plus Harveys Best
always available.**

**A good selection of German bottled beer including Wheat beers,
Kolschbier and smoked malt Rauchbier. Thatchers traditional
cider, Belgian Beers and Fruit Wines.**

Function room for hire, Quiz on Sundays.

Cask Marque quality award.



Priory Arms

a genuine free house

83 Lansdowne Way, Stockwell, SW8
(5 minutes Stockwell Tube) Tel 020 7 622 1884

**Our German Beer
Festival will be
running in early
October - see next
London Drinker for
dates.**

IDLE MOMENTS

Greetings Folks - I trust you are enjoying (or you enjoyed, depending on when you get sufficiently bored with life to read this) the holiday season. Talking about life, I am reminded of a fairly recent quotation from our old friend Anon:

Life is like a sh*t sandwich; the more bread you've got, the less sh*t you have to eat.

Right, that's the tasteless bit out of the way so let's get on with the number puzzles. You may note this time that I've used the numbers 1 to 10 and put them in order; that way I've saved numbering them:

- 1 S on a MS
- 2 EB (P & D)
- 3 S in the B of O
- 4 B on a CB
- 5 P on a P
- 6 F in a H
- 7 LGS in the BS (H and K with F)
- 8 W on a RC
- 9 SF in a SY
- 10 P is the P for the LDC

The brewery anagrams usually come next. I thought I might do something different this month, but when it came down to it I couldn't be bothered - so here are the brewery anagrams:

1. SWAY ANT
2. HARD CLEATS
3. HAH! SHEER MIX
4. STAGE ARM
5. SCUM BRAIN
6. MY OWL FEAR
7. CARING ROM
8. FLOWERY BED FIXER
9. WE HOOT SUN
10. TOLD KEN

But when it came to 5BY4 time I revolted. I thought I would do second names of former presidents of the USA but I thought it would be too easy done 5BY4 style. So I'm just giving you the names and asking you to provide the second forename. If you are having problems there is an unpronounceable word at the bottom - it is the second initials (in the right order).

1. Ronald (Wilson) Reagan
2. Dwight (David) Eisenhower
3. Harry (S) Truman
4. William (Jefferson) Clinton
5. John (Quincy) Adams (the younger one)
6. John (Fitzgerald) Kennedy
7. Franklin (Delano) Roosevelt
8. Richard (Milhous) Nixon
9. Lyndon (Baines) Johnson
10. Ulysses (Simpson) Grant

And so finally, here are the "general" knowledge questions; when you think you've got them all right award yourself another pint (No, not on my tab):

1. Who was the World's first criminal to be arrested by the use of radio telegraphy?
2. Which British car manufacturer started life as the Swallow Sidecar Company?

3. After his Bentley company was taken over by Rolls Royce, what other car company did W.O.Bentley work for?
4. Bob Hope who recently celebrated his 100th birthday, has lived most of his life in the USA but where in England was he born?
5. Once it was British Railways, then British Rail; now it just runs the tracks while other operators run the trains. What is it called now (this month)?
6. What is the full name of the material which bears the trade name "Teflon"?
7. What American singer works with a backing group called "The Blue Moon Orchestra"?
8. What English city was named by the Romans as Aquae Sulis?
9. And what town in the same general area was named Corinium?
10. In J.M.Barrie's Peter Pan, what were the dying words of Captain Hook which indicated where he was educated (or claimed to be)?

Well that's about it, apart from that "word" of ten consonants. If you are wondering what it means I wouldn't be at all surprised.

And the word is "WDSJQFDMBS".

Byee!


Andy Pirson



THE HEAD OF STEAM

**Euston Station,
London NW1**

Tel: 020 7383 3359



BEER FESTIVALS COMING UP

from 5th August - SEASIDE BEERS
**from 18th Sept - BATTLE OF THE
SUNSHINE BEERS**
**from 13th Nov - YORKSHIRE
BEERS**

(we will try to get beers from as many
Yorkshire breweries as possible!)

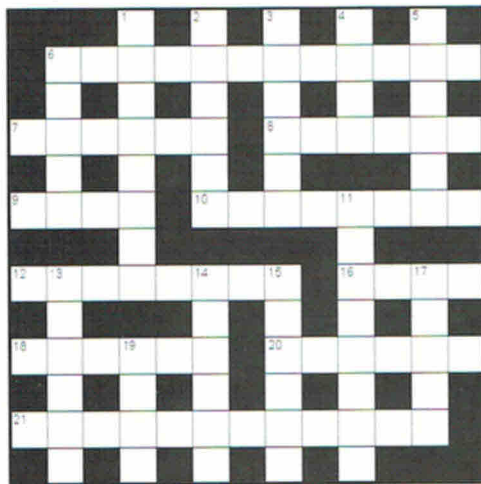
PLUS promotions on all the time!

Free 'White Shield' with 1744 cask in August

LONDON DRINKER CROSSWORD

Compiled by DAVE QUINTON

£10 PRIZE TO BE WON



Name _____

Address _____

All correct entries received by first post on 24th September will be entered into a draw for the prize. Prize winner will be announced in the December London Drinker.

The solution will be given in the October edition.

All entries to be submitted to:
London Drinker Crossword
25 Valens House
Upper Tulse Hill
London SW2 2RX

SOLUTION TO JUNE CROSSWORD

D	R	O	U	G	H	T	S	C	A	S	H			
O	F	R	E	S	B	I								
D	E	F	I	A	N	T		T	H	O	N	G		
O	E	N		H	Y	U								
	T	R	O	T		E	T	E	R	N	A	L		
A			E	R				D	A					
B	R	O	A	D	S		P	E	R	S	O	N		
R		V				S	F							
I	N	E	X	A	C	T		F	I	S	H			
D	R		V		A	E	K	A						
G	A	R	B	O		T	A	C	K	I	N	G		
E		U	N			U	T	E	E					
D	I	N	E			M	E	A	S	U	R	E	S	

ACROSS

- Ban game from the pub. [3,9]
- I dream about love. [6]
- Liable to attack without first noticing colour. [6]
- For each one a fairy. [4]
- Housing costs come to a height; massive falls result. [8]
- Compels beasts to eat nothing. [8]
- Keen on some rain tomorrow. [4]
- In Madagascar abandoned small creature. [6]
- Burn out middle and make new. [6]
- Bothering to rip apart south coast landmark. [8,4]

DOWN

- Falling down after first tough exercise. [8]
- Leading British Isles cult to split up. [6]
- Boy with no vital organ. [6]
- South African attempt to produce cereal. [4]
- Opening after poster's arrival. [6]
- Emblem producing endless trouble. [5]
- Plague of pied mice. [8]
- Minute tape. [6]
- Goes round for alternative pieces. [6]
- Instant support. [6]
- School of wild trout. [5]
- Ridicule a form of music. [4]

Winner of the prize for the April Crossword:
David Hughes, Streatham, SW16.

Other correct entries were received from:

Pat Andrews, Geoff B, Rob Barker, Ben Burfutt, Curtis Carr & Stuart Guthrie, Eddie Carr, Chris Fran & a spotted dog, Brian Collins, Roger Cummins, Paul Curson, Bob d'Abilda, Dave DJ, Richard & Clever Clogs Douthwaite, "E121", Mike Farrelly, Arthur Fox-Ache, Dudley Freeman, G&T and B the B, Eileen Graves, Paul Gray, J.E.Green, Tarnya Haigh, John Heath, Kevin Henriques, Billy Hernon, Graham Hill, William Hill, Sheerluck Holmes, Alan James, M.Jones, Tom Kemp, P.J.Kerrigan, Mike McHugh, K.I.May, M.J.Moran, David Morgan, Al Mountain, Rod Prince, Derek Pryce, Violet Elizabeth Pwoth, Geoff S, Bryan Smith, Richard Splash, Nick Stone, Ken Taylor, Bill Thackray, J.Treeby, Martin Weedon, Ian Whiteman, John Williams, Sue Wilson, David Woodward, Terry Wookey, Peter Wright, Yak, Pete Yarlett.



THE RED LION

Linkfield Road, Isleworth. Tel: 020 8560 1457

(Isleworth British Rail 2 mins)

August Bank Holiday
Champions
Beer Festival
22nd-25th August
Friday Noon to Monday 8pm

**Over 30 different Award Winning Real
Ales from breweries across the country**

Entertainment & food on all four days

Music from Robin Bibi, Dave Peabody, The Convulsions,
Papa George & Micky Moody, Tim Hain.

Children's Entertainment in the Garden Sunday & Monday

Admission Free

Real Ales & Real Entertainment - A Real Local Pub

Visit our website at www.red-lion.info

Afternoon TEA ... You'll love it



Also available in the evenings!

Enjoy TEA and other fine HOGS BACK Ales at this year's GBBF

Hogs Back Brewery Ltd

Manor Farm, The Street, Tongham, Surrey GU10 1DE

Tel 01252 783000 www.hogsback.co.uk