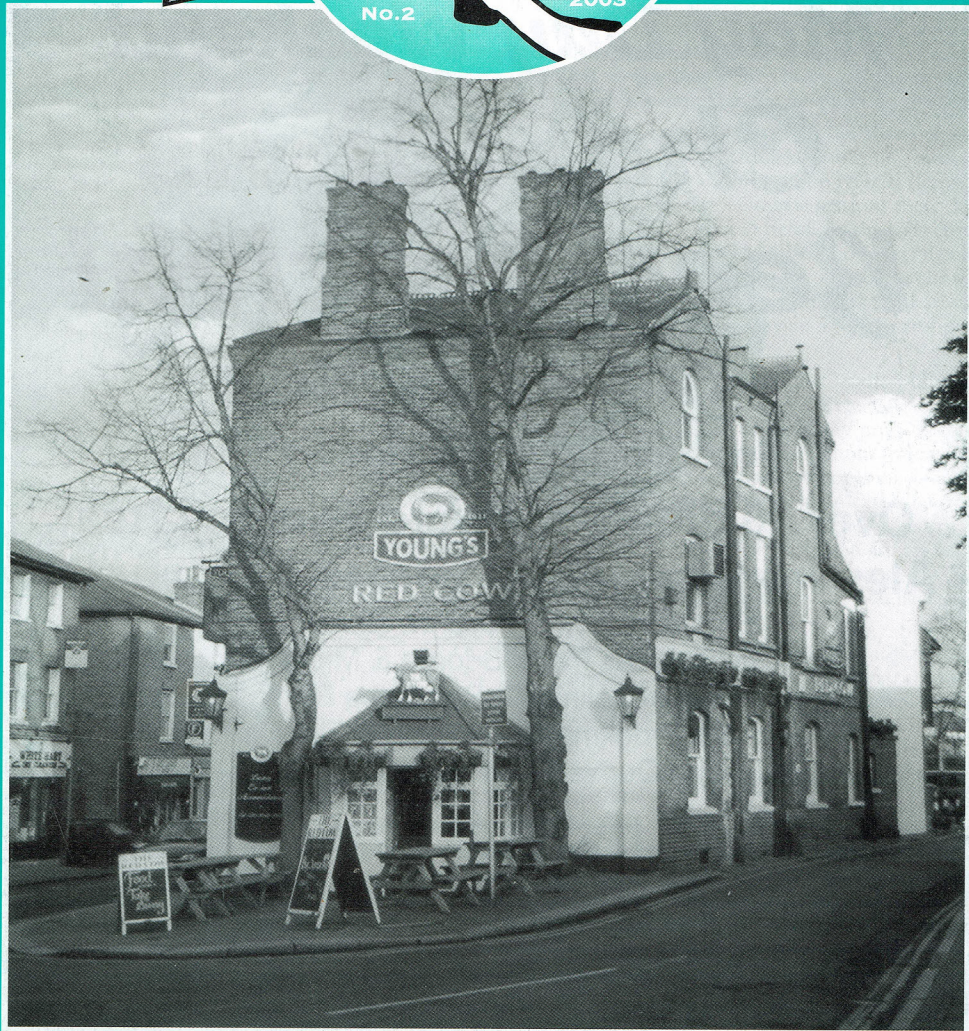


Produced on behalf of the London branches of the Campaign for Real Ale

# LONDON DRINKER

VOL 25  
No.2

APRIL  
MAY  
2003



The Red Cow, Richmond

*Photograph by Roy Hurry*



**THE RED LION**

Linkfield Road, Isleworth. Tel: 020 8560 1457  
(Isleworth British Rail 2 mins)

***May Day Weekend***  
***Champions***  
***Beer Festival***  
***2nd - 5th May***

**Friday Noon to Monday 11pm**

**Over 30 different Award Winning Real  
Ales from breweries across the country**

Entertainment & Food on all four days  
music includes Papa George & Micky Moody,  
East of Ealing, Dr Bob & the Nurses  
also Bill Brookmans' Maypole & Fire Dancers  
and Our very own Mummers Play

Admission Free

**Real Ales & Real Entertainment - A Real Local Pub**

Visit our website at [www.red-lion.info](http://www.red-lion.info)



*London Drinker is published by Mike Hammersley on behalf of the London Branches of CAMRA, the Campaign for Real Ale Limited, and edited by Geoff Strawbridge.*

*Material for publication should preferably be sent by e-mail to [geoff@coherent-tech.co.uk](mailto:geoff@coherent-tech.co.uk).*

*Letters by post may be sent to Robin Forshaw-Wilson, 16 Sunningfields Crescent, Hendon, NW4 4RD.*

*Press releases should be sent to Dave Lee, 60 Fossil Rd, Lewisham, SE13 7DE.*

*Changes to pubs or beers should be reported to Capital Pubcheck, 2 Sandtoft Road, London SE7 7LR or by e-mail to [capitalpubcheck@hotmail.com](mailto:capitalpubcheck@hotmail.com).*

*For publication in June 2003, please send electronic documents to the Editor no later than Wednesday 14 May.*

*SUBSCRIPTIONS: £3.00 for mailing of 6 editions should be sent to Stan Tompkins, 122 Manor Way, Uxbridge, Middlesex, UB8 2BH (cheques payable to CAMRA London).*

*ADVERTISING: Peter Tonge:  
Tel: 020-8300 7693.*

*Printed by Cliffe Enterprise,  
Lewes, East Sussex.*

## EDITORIAL

### OPENING HOURS!

CAMRA has recently staged its first National Pubs Week, an initiative that I fully applaud. Whilst we campaign for the beer consumer to get a full measure of high quality beer at a reasonable price, we must not lose sight of the context. Draught beer is essentially a bulk commodity and for all the merits of bottle-conditioned beers (or Real Ale in a Bottle, as we are asked to call it now), take-home containers and the comforts of home, beer at its best is only to be found in our best pubs. There is little point in campaigning for real ale if you do not campaign for the pub.

Changes are coming to pubs in England and Wales in the shape of new licensing legislation. This will, amongst other things, bring flexibility to opening hours. I have no objection in principle to more relaxed licensing laws. Perhaps because I am getting older, my favourite sessions these days are lunchtime and early evening so I was most grateful for the last reform that brought in all day opening. For this new legislation however 'flexible hours' appears in practice to mean town centre 'circuit' pubs being allowed to stay open to 2am or 3am. Fine by me because I am unlikely to be around but I am concerned that this may change the way in which many pubs operate.

Despite regular and substantial price increases, margins in the pub trade have been tight for years and are unlikely to improve. Extended opening hours means increased costs, particularly staff costs. If any profit is to be made out of this change then these must be kept to a minimum and my fear is that pub chains in particular will achieve this simply by opening later. We will therefore get 'repositioned' opening hours rather than extended ones. Indeed, the actual opening hours may be reduced, seeing a return to afternoon closing or not opening at lunchtimes at all. If you are off on an 'away' sporting fixture, a business meeting or just on a day out, you may find that the most accessible pubs are not opening until after you have gone home.

We may also find that the custom in these pubs then skews towards the late-night crowd of younger people who, at the risk of generalising, are more likely to drink lager and alco-pops. Cask conditioned beer sales will fall and eventually be discontinued. Perhaps these particular pubs are not the ones that serve the best real ale and are unlikely to be Good Beer Guide entries but any reduction in availability lowers its profile. The presence of a hand-pump on a bar remains a significant icon.

Hopefully, none of this will affect those pubs tied to our traditional local breweries and our few precious genuine free houses beyond perhaps their staying open to midnight at weekends. They might however be caught up in another aspect of the new legislation. At present, pub licences are granted by local magistrates but it is planned that this function will move to local

*Views expressed in this publication are those of their individual authors and are not necessarily endorsed by the Editor or the Campaign for Real Ale Limited.*

## IN THIS ISSUE

Pub preservation	5
National news	8
London activities	12
Letters	18
Branch diaries	20
Cask Marque awards	23
Capital Pubcheck	28
Membership form	29
A marathon crawl	35
Richmond	38
Idle Moments	40
Crossword	42



## EDITORIAL

authorities with a greater level of control being imposed. For example, pubs wishing to extend their opening hours will have to submit and consult on an 'operating plan', not simply convince the local magistrate that there will not be any trouble. As a local government officer of thirty years standing (or should that be sitting?), I would not accept that the involvement of local authorities is an immediate recipe for disaster. That said, they are obliged to do what the law specifies – however daft that might be – and it is not unknown in some authorities for vested interests to have significant influence. And they will charge for it, of course...

I am also disturbed about the proposed change to the licensing of entertainment which will put severe restrictions on even the most modest live performances. Perhaps someone with a better knowledge of this aspect could write in and give us the full picture.

In conclusion, I have to ask whether we need this 'radical overhaul' or if a few small adjustments to the discretion allowed to magistrates under the existing arrangements would achieve what we want just the same? We will see.

*Tony Hedger*



***A genuine Free House featuring a selection of the very best in Cask Ales, Traditional Cider and Perry***

- Mild always available
- La Trappe Trappist ale & Bitburger Pils both on draught
- Function room free to CAMRA members
- Thursday night is Quiz Night
- Jazz piano Sunday afternoons
- Jazz/Blues every Friday and Saturday evening
- Open daily from midday



**26 Wenlock Road  
London N1**

020 7608 3406

Nearest Tube stations are Old Street (exit 1) and Angel. Wenlock Road is off City Road via Windsor Terrace  
<http://www.wenlock-arms.co.uk/>

## Europa Beer Festival

**Bank Holiday**

**May 1st, 2nd & 3rd, 2003**

- ❖ Great 'live' entertainment
- ❖ Over 3 days
- ❖ 12 new beers
- ❖ Bar-B-Q
- ❖ Children's play area
- ❖ 1 mile from Hampton Court Palace

**The Europa**

**171, Walton Road, East Molesey  
Surrey KT8 0DX  
Tel: 020 8979 8838**



# THE LONDON REGIONAL INVENTORY

**W**e all cherish the idea of the historic pub - it's one of the great British traditions. Yet how many of the pubs you go into are *truly* historic. Yes, the building may have been put up when Sir Christopher Wren was a lad but what about the bit where you have a drink - how old is the plan, how old the bar fittings and the decoration? The sad truth is incredibly few pub interiors have any real claim to antiquity, such is the amount of theming, modernising and opening out that has gone on in the last three or four decades.

Twelve years ago CAMRA began a national survey to find the last few largely unaltered pubs. The resultant National Inventory amounts to little more than a couple of hundred examples. An updated version is in the press and covers the nation's best. But there are still many hundreds of lesser examples which are still worth seeking out. Yes, there has been change but each pub still has parts or specific features of historic interest. CAMRA is currently surveying pubs for 'Regional Inventories' and the London RI is making good progress under the auspices of London Pubs Group. About 100 pubs have been identified ranging from quite simple ones to some of the grandest in the land. When complete and published, this will be the definitive guide to the truly historic pub interiors in the capital - you will be able to forget all the silly hype about 'founded in 1633' and 'Charles Dickens used to drink here': such (often spurious) history tells you nothing about the surroundings you find today!

The descriptions in the London RI will be concise but will give you an authoritative statement about what to find at each pub. They will explain what is old and, often, what is not. You will be able to get a good insight to what pubs really were like in past times. The criterion for inclusion can never be hard and fast: a working definition is that the plan and/or furnishings and/or decoration of the pub interior must retain significant elements from before the Second World War, and which are rewarding enough for people to take a little trouble to seeking.

Publication of the RI is some way off yet as there are many pubs in London still to be surveyed. But, to help you get the benefit *now*, *London Drinker* will be carrying sample entries from various parts of the city. We hope you will try and visit the pubs and trust you will enjoy them (all those featured are believed to sell real ale).

## **The Windermere, Windermere Avenue, South Kenton, HA9 (020-8904 7484)**

The best suburban interwar interior in all London. Dating from 1938 or '39, this large red-brick, Dutch-gabled pub is right by South Kenton station. Three bars: the public one, facing Windermere Road, is rarely used: saloon (north) and lounge (south)

behind. Original features include the large inner porches, bar counter, back fittings, wall-panelling, doors between the saloon and lounge, fireplaces (charming pictorial tiles in the saloon fire surround), advertising mirror with clock in the saloon, and tiled loos. The only significant changes are loss of the off-sales (incorporated into the public bar) and a carefully done extension of the counter in the lounge. The fixed seats are additions and the counter superstructure in the saloon and lounge may date from the 1950s or '60s.



Open 11 am to 11 pm Monday to Wednesday, 11 am to 12 midnight Thursday to Saturday, 12 noon to 10.30 Sunday.

## **The Victoria, 10a Strathearn Place, Bayswater, W2 (020-7724 1191)**

An impressive and seemingly early scheme dating from the mid-Victorian era. The drinking area is in the sharp angle of two streets and has one of London's most spectacular bar-backs - lots of close patterning in the gilding and colouring on the mirrors. There is equally wonderful glass on a back wall. The fire surround is High Victorian in its detail and has a print of Victoria and Albert surrounded by their children. Upstairs is an impressive panelled room with much reused work.

Open 11 am to 11 pm Monday to Saturday, 12 noon to 10.30 Sunday.

## **The Mayflower, 117 Rotherhithe Street, SE16 (020-7237 4088)**

Well-known pub overlooking the Thames. Small front room with some (probably) early 19th-century panelling. The counter front with its rough, lapped timber is likely to be interwar and may date from the same scheme as the seating and panelling in the larger room.

Open 12 noon to 3 pm and 5 pm to 11 pm Monday to Thursday, 11 am to 11 pm Friday and Saturday, 12 noon to 10.30 Sunday.

*Geoff Brandwood (CAMRA's Historic Pubs Caseworker)*

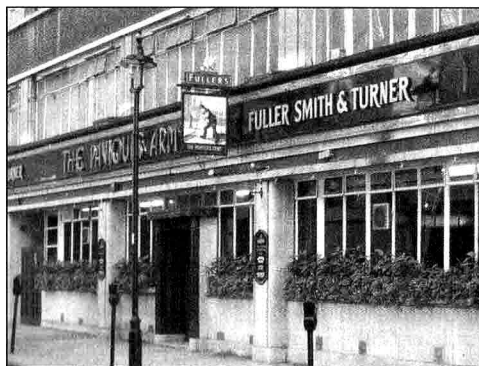
*Jane Jephcote (Chair of CAMRA's London Pubs Group)*

## THE PAVIOURS ARMS - A CAUTIONARY TALE

One of central London's finest surviving inter-war pubs, the Paviours' Arms, Page Street, SW1, is to be demolished following the expiry of Fuller's lease in May this year. The pub, which is part of a 1937 office block called Neville House, has some surviving Art-Deco features and is on CAMRA's London Regional Inventory of pub interiors of historic interest. In February this year I was informed of the pub's forthcoming closure and demolition.

It appears that back in the year 2000 the landlord, Land Securities plc, sought planning permission to demolish Neville House and redevelop the site as residential flats, retail and car parking. Among those objecting to this at the time were Fuller's, the leaseholders. However, it did not seem to have been brought to CAMRA's notice. Moreover, the building was not listed so there was no need for listed building consent to be sought. Westminster Council eventually granted permission for demolition and redevelopment in May 2002.

A browse through Westminster Council's planning website indicates that the words 'public house' and the name 'Paviours' Arms' were never mentioned in the description of the planning application to demolish the building and redevelop the site - only



*The Lower Red Lion*



**36 Fishpool Street,  
St Albans AL3 4RX**

**Tel: 01727 855669**

**Nine Real Ales**

**Draught Czech and Belgian beers  
Belgian bottled beers and Malt Whiskies**

**MAY DAY HOLIDAY  
BEER  
FESTIVAL**

**Friday 2nd to Monday 5th May**

Comfortable B&B  
Quiz night Wednesdays

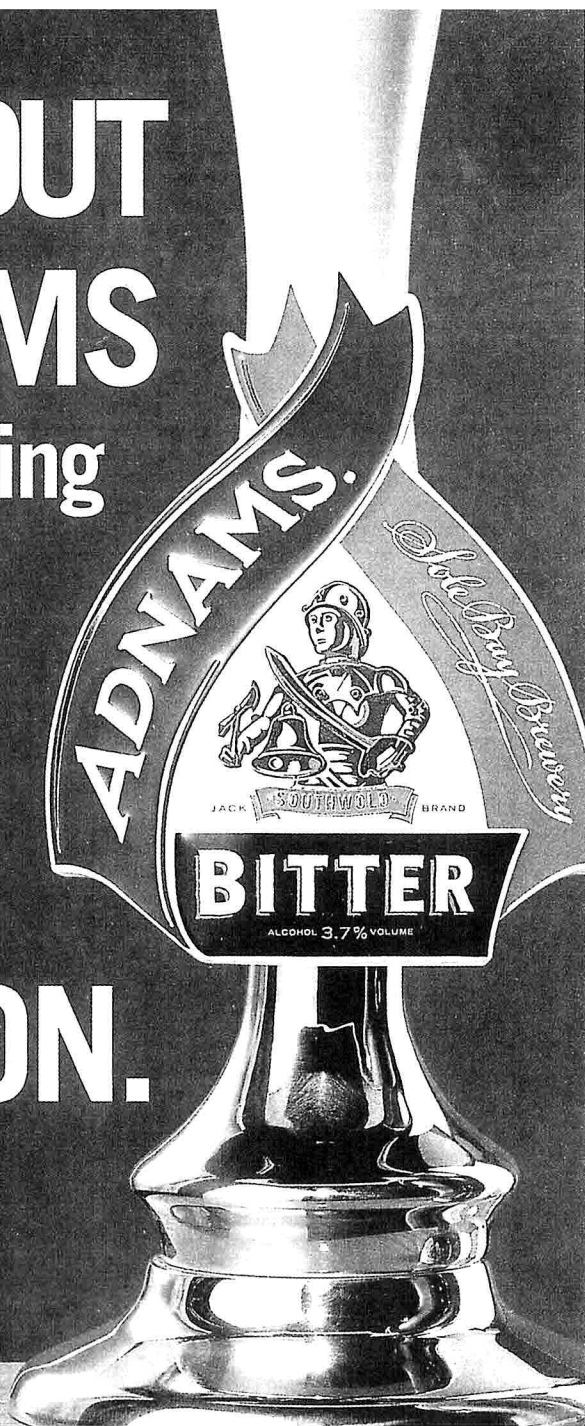
Lunch time meals & snacks  
Sunday Roast lunch

the name 'Neville House' is mentioned - so it looks as if this is why it passed through without CAMRA's knowledge. Moreover, since Fuller's were not the landlords their name was not mentioned either.

This case serves as a cautionary tale in the campaign to save London's pub heritage. If a pub or bar is housed within a larger building it may not be mentioned as a public house in planning application descriptions. When scouring planning application lists in newspapers and on websites it is worth bearing this in mind and, when in doubt, check to find out whether there is a public house at the address stated in the application. When the street in question is not particularly long it should not be too onerous to check the location of each new application if you know that there is a pub in that street. Meanwhile, try to get along to the Paviours' Arms before it closes on 2 May (date correct at the time of writing).

*Jane Jephcote*

**SEEK OUT  
ADNAM'S**  
at discerning  
outlets  
**ALL  
OVER  
LONDON.**





## ◆ National Pubs Week

CAMRA launched its first ever National Pubs Week in February, aiming to reverse the nationwide pub closures of the last few years. Mike Benner, CAMRA's Head of Campaigns said 'Although it was encouraging to see that nearly 30% of the UK adults visit the pub 'once a week a week or more', CAMRA were surprised to find that over a quarter of adults NEVER visit pubs. Research also showed that 20 pubs are closing every month and that if this trend continues, then many of Britain's unique pubs will disappear very quickly!' In London, the picture is even worse, with almost 40% of adults never visiting a pub.

The response to this trend was to launch the Pubs Week, with the slogan that 'there's a pub for everyone'. The initiative received widespread support from pub companies, national and regional brewers - the likes of Punch Taverns, Coors, Scottish & Newcastle, Fullers, Charles Wells and Arkells have given support. Pubs were encouraged not just to display the specially produced promotional posters, but to lay on extra events aimed at enticing people back to the pub.

Support was also forthcoming from MPs. Ashok Kumar, MP for Middlesbrough South and East

Cleveland has led the call for MPs' support, including an Early Day Motion put down in Parliament. Mr Kumar said 'For many people pubs are an essential part of the local community and are used for local meetings and social occasions, as well as providing a lifeline to people without other support networks in place. I am saddened that so many good local pubs are forced to close each year and am happy to give my support to CAMRA's campaign.'

Although intended as a low-key campaign to set the scene for future pub campaigning, the response has far exceeded expectations and extra promotional material had to be produced. This clearly demonstrates the gap in the market left by the decision by the Brewers and Licensed Retailers Association to drop its event some years ago. In response to the success of the initiative in the industry, Mike Benner said 'We are delighted that so many pubs have come on board and supported National Pubs Week. Everybody in the pub and beer industry is beginning to realise that we all need to work together to get people back in pubs and encourage pubs to be more proactive. The support from the industry has been fantastic and we hope that, with their continued help, we can establish National Pubs Week as a calendar event.'

## ◆ Britain's best pub

The Swan, Little Totham, Essex was named CAMRA's 'National Pub of the Year' on 21 February, heralding CAMRA's first 'National Pubs Week'.

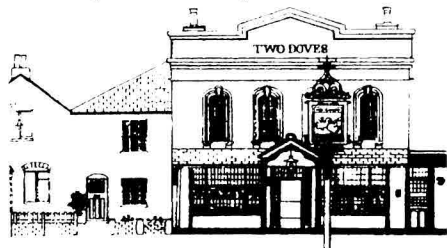
The 2003 Good Beer Guide describes the Swan as a 'Delightful Grade II listed cottage pub set behind a pleasant garden. A good selection of beers includes a house ale from Mighty Oak. Essex CAMRA pub of the Year 2000 and 2001, the cosy saloon, with its low ceiling and beams is complemented by a traditional public bar with a 1950s bar billiards table. The new dining room offers good value meals. The hub of the village, it supports many local activities.'

Overjoyed Licensee John Pascoe said 'Today I am the happiest publican in the industry. To be awarded the highest accolade by CAMRA has been my aim since buying the pub in 1996. My thanks to all the villagers in Little Totham for supporting the Swan and making sure of its future. I would also like to thank Dengie CAMRA branch for their confidence in The Swan, all our staff for their hard work, and all of our regulars for their support.'

Tony Jerome, CAMRA's Press Manager said 'The Swan is an ideal example of a pub that markets itself to its local area, offering its local community a pub that suits their needs. National Pubs Week has been designed to encourage more pubs across Britain to

## TWO DOVES

37 Oakley Road, Bromley Tel 020 8462 1627



*A warm welcome awaits you in the relaxed surroundings of this friendly pub*

**PUB OF THE YEAR 2000**  
CAMRA SE London

Changing selection of Real Ales  
CAMRA Good Beer Guide listed  
Local Award Winner

Mature Clientele • Light Snacks

Bus 320 from Bromley North and Bromley South  
railway stations, stops outside

Hours: 12-3, 5.30-11 Mon to Sat & 12-3, 7-10.30 Sun

follow suit. If we are to reduce pub closures then pubs have got to learn to be more proactive and find out what their locals want from a pub. Over 15,000 pubs have come on board with National Pubs Week and CAMRA hope that all of the British pub industry will benefit from this new campaign.'

## ◆ Growler is winter champion

**I**t isn't just pubs that have been in the limelight recently. CAMRA's National Winter Ales Festival, held for the first time this year in Burton on Trent, was the venue for the judging for the Champion Winter Beer of Britain competition.

The overall Supreme Champion was none other than 'Old Growler' from Nethergate Brewery in Clare, Suffolk - a beer which also won the award in 1997. The 5% ABV porter is described in the 2003 edition of the Good Beer Guide as a 'complex and satisfying porter, smooth and distinctive. Sweetness, roast malt and fruit feature in the palate, with bitter chocolate lingering. The finish is powerfully hoppy'.

Judges paid tribute to Nethergate's ability to consistently brew excellent beers capable of being judged against beers from breweries many times their size. Dick Burge, Managing Director of Nethergate, said, "We are delighted. It's a great tribute to the skill and dedication of our brewing team. It was the second beer we ever brewed way back in 1989 and it's been a favourite ever since. Interestingly one of our biggest customers for Old Growler uses it in Christmas Puddings which are exported around the world."

Old Growler was also first in the Stouts and Porters category, ahead of Wentworth Oatmeal Stout and RCH Old Slug Porter. Silver medal in the overall competition went to the winner of the Old Ales & Strong Milds category, Gale's Festival Mild. Festival Mild was originally produced by Gale's of Horndean in the early 1990s for a CAMRA beer festival, with the aim of promoting Mild at a time when Gale's Milds were being withdrawn due to poor sales. The brewery were persuaded to keep the beer on by the enthusiastic original response.

## ◆ Award for Drinks Cage

**N**ext in the awards season: The Drinks Cage at Borough Market near London Bridge has won the Independent Specialist Off-Licence of the Year award, announced at the Off Licence News Drinks Retailing Awards ceremony held at the Landmark Hotel in February. The judges' comment was that 'the Drinks Cage stands out for bringing something genuinely new and enterprising to the independent sector' It operates as a co-operative venture between Utobeer, Cartwright Brothers Wines, RoseBlancRouge and WineWineWine, all South

London based businesses. It offers a range of products from fine beers and wines from around the world to specialist spirits and soft drinks, with a strong emphasis on quality products not generally available elsewhere.

The award is a boost both for the Drinks Cage and for the Borough Food market, which has rapidly established itself as one of the best retail food markets in the UK.

## ◆ Wetherspoon profits up despite increasing costs

**J**D Wetherspoon's financial results for the six months to January were released in early March, and showed a 3% increase in profit before tax despite increases in costs and tightening margins.

The 21 pubs opened in the six months brought the chain up to 629 pubs at the end of January. Seven more opened in February including Baxter's Court in Mare Street, Hackney, with 14 under construction and plans in hand for well over 100 more. The plan is to open another 50 in the next six months. The business is now generating over 85% of the money needed to pay for new pubs, reducing the amount of money that needs to be borrowed for expansion.



## ◆ Brewery news

**C**ain's Brewery of Liverpool, saved from closure last year by a takeover, has announced ambitious plans to turn itself into a significant regional brewery by building up a pub estate that

could grow to over 100 pubs. The brewery was bought from the Danish Brewing Company last July by Gardner Shaw, owned by entrepreneurs Ajmail and Sudarghara Dusanj, and they have shown their commitment to the brewery by moving their head office from the Midlands to the Cain's Stanhope Street site. The new owners have been making changes in order to stem the losses that the brewery was making. Ajmail Dusanj said "Liverpool's only major commercial brewery has a great potential, but the next 12 months will be critical. The support of local pubgoers, CAMRA, and the Cains Supporters Club will be all important as we attempt to turn round the future of Cains.

More positive news comes from Greene King, which has announced a 5 per cent rise in sales in the first 36 weeks of its financial year. Individual brands did even better than the average, led by Abbot Ale with sales up 20%. Despite criticisms from the City that combined brewery and pub ownership is not the best business model, Greene King claim that this integration is the secret of its success.

And McMullen's, threatened with closure by shareholders who would rather cash in on the brewery's property redevelopment value, has announced record profits. Pre-tax profits went up to million, a 28 per cent increase, increasing hopes that the brewery's future can be secured. Profits have doubled in five years, demonstrating the value of the traditional approach of brewing quality cask beer and selling it through a tied estate.

## ◆ 6C shareholders reject Osmond bid

Shareholders in Six Continents, the pub and hotel company that used to be Bass before it sold all its breweries off, have decisively rejected a hostile bid for the company from Hugh Osmond. 6C has its own restructuring plan - to split itself into two companies, one running the pubs, and the other taking the hotels business. The management had come under fire for consistent underperformance and failing to improve the company's fortunes despite massive investment.

Mr Osmond of Punch Taverns fame made his reputation as a corporate raider when he snatched Allied Domecq's pub estate from under the nose of leisure giant Whitbread. He has little experience of the hotel business, but planned to sell this part of the business off. Six Continents' management opposed the bid as offering nothing over and above their own plans except a potential big pay-off for Mr Osmond and his company.

## ◆ Hogshead ale range cut

Laurel Pub Company, owners of the Hogshead chain of pubs, has announced changes that will see the end of small brewers' beers in the Hogsheads.

The Hogsheads were originally set up by Whitbread, and grew to number more than 100 pubs, all selling up to 10 beers from regional and micro breweries. Laurel dramatically cut the ale choice a couple of years ago but, under the new plans, only two real ales will be on offer - Fullers London Pride and Caledonian Deuchars IPA. However good the chosen two beers are, the change will significantly reduce choice, and critics accuse Laurel of missing a sales opportunity by failing to supply local products to local people.

Iain Loc of CAMRA said 'In National Pubs Week, it is unfortunate to say that at least some pub groups seem to be doing their damndest to discourage people from visiting the pub.'

## ◆ Interbrew puts weight behind quality scheme

Interbrew has announced a ,000 investment in real ale quality with its commitment to the Cask Marque beer quality scheme. It plans to go halves with stockists of Bass and Boddington's on the costs of accreditation, with a plan to get some 2,000 pubs into the scheme. Cask Marque is also going to run a quality check on all the Draught Bass outlets across the country. Interbrew have been prompted by figures showing that more than four fifths of Cask Marque accredited licensees have seen real ale sales increase since they passed inspections and admitted to the scheme.

Interbrew's research also shows that pubs offering high quality cask beer are also better regarded even by non-ale drinkers.

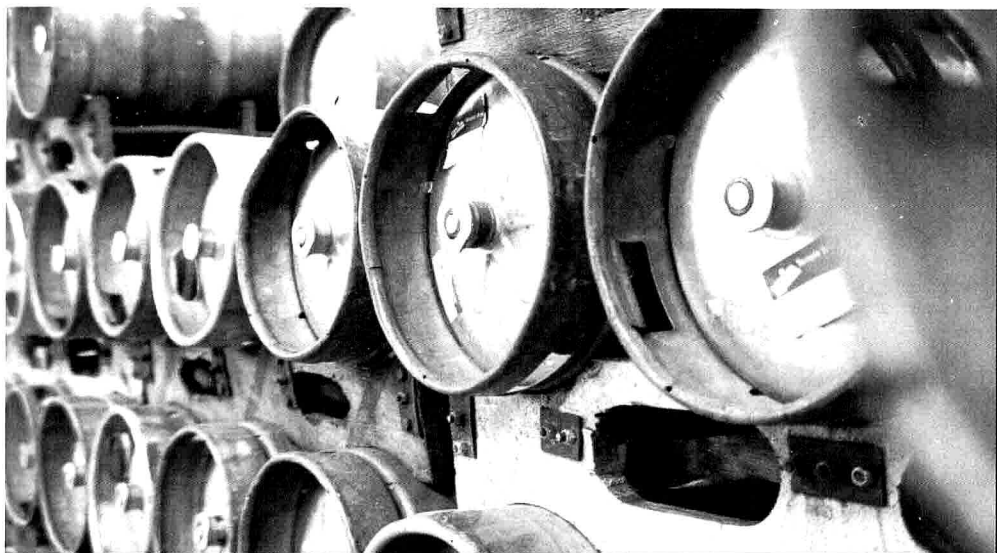
## ◆ Bulmer dumps alcosflops

Troubled cider maker HP Bulmer, which lost its finance director and chief executive late last year after a multi million pound black hole appeared in its accounts, has decided to drop almost all its alcopop brands and concentrate on cider. It has closed its new product development arm as part of the change of strategy introduced by new chief executive Miles Templeman, former boss of Whitbread.

The ownership of beer supplier the Beer Seller is also in doubt. Bulmer bought Beer Seller a couple of years ago, and there is now a possibility that it will be sold in the attempt to turn round the company, which has reported that it could run out of money within the year. Templeman has until July to do something about the million that the company owes - more than double the valuation of its assets.

Advertise in next month's  
**LONDON DRINKER**  
from only £45 (quarter page - all inclusive)  
Call Peter Tonge now on 020 8300 7693





## crowd pullers

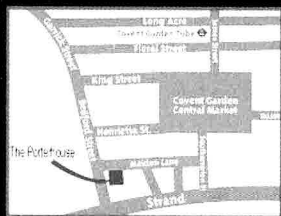


9 beers that we take exceptional pride in brewing, 3 stouts, 3 ales and 3 lagers. Hand-crafted in small batches using modern technology whilst respecting the ancient art of brewing. The Porterhouse brews some of the finest beers in the world using only malt, hops, water, yeast, no chemicals and unpasteurised.

Many others say similar but we simply don't believe them.

We pride ourselves on the quality and unique taste of the stouts and beers we brew, so much so that Porterhouse stouts and beers are only available in a Porterhouse Pub, this ensures quality from grain to glass.

3 great stouts, 3 ales, 3 lagers & specials all on the premises. Including one of the largest selection of bottled beers. Only available in Temple Bar Dublin, Bray and Covent Garden London.



**PRIDE**  
in everything we brew

**The Porterhouse Maiden Lane, Covent Garden**

tel. 0207 7836 9931 fax 0207 7379 7991 [www.porterhousebrewco.com](http://www.porterhousebrewco.com)

## YOUNGS LAUNCH BREWING DISPLAY AT KEW

Young's brewery has teamed up with the Royal Botanic Gardens at Kew to stage a display of traditional brewing, including a small field of barley and hops grown on poles. The display, which started in February and will run into the autumn, is in the Princess of Wales Conservatory, one of the huge greenhouses which features a number of different climates in its various sections. It includes vintage brewing equipment as well as a guide to the brewing process, and historical notes on all the traditional activities and crafts that supported the

brewing industry, such as hop-picking, charcoal making and coopering.

A small amount of the malted barley and hops grown at Kew will be used to produce Kew Brew, a special bottle conditioned ale. There will be two sampling days, on Sundays 27 April and 28 September, when brewing staff will be on hand to introduce Young's range of cask beers. Vouchers offering discounts on Young's beer at local pubs will also be on offer.

## YEAR OF THE RAM

Ramrod, the living trade mark of Young's Brewery, has been celebrating the Chinese new year, which ushered in the Year of the Ram.

The Dorset Horn ram, which lives in the stables at Young's Ram Brewery in Wandsworth, went along to Young's Chinese restaurant, the Bayee Village, in Wimbledon to meet restaurateur Marco Yu.

Ramrod was accompanied by John Young, 81-year-old chairman of the Ram Brewery - the oldest brewery in Britain - who dressed up in the traditional Chinese costume of the Fortune God.

Hong Kong-born Marco Yu has run the Bayee Village since it opened in 1986, specialising in high-class Peking and Szechuan cuisine. The restaurant is flanked by two Young's houses: the Dog and Fox, which dominates the centre of Wimbledon Village, and Finch's restaurant bar.



# The Brewery Tap

*John and Heather welcome you to the Brewery Tap.*

## Five rotating Cask Ales

Guests soon to appear include  
Bank Top, Cottage, Holts, Rebellion, Slaters &  
Hogs Back and now we often stock mild ale.  
New lunchtime menu. Genuine home-cooked food.  
Traditional Sunday Roasts 12 - 3.00pm  
Wednesday Night is Tapas Night



Open all permitted hours  
Nostalgia Juke Box  
Fish 'n Chips & Football

Bring  
this  
advertisement  
for a **FREE**  
half-pint of  
**Real Ale**  
(your choice!)

**68 High Street, Wimbledon Village, SW19**

(10 minutes from Wimbledon station) 020 8947 9331

WHATEVER  
YOU DO,  
TAKE PRIDE.





## LUCKY 13th AT BATTERSEA

This year's Battersea Beer Festival proved popular, with 3,384 customer admissions over the three days from Wednesday 5 to Friday 7 February and supplies of British cask ale, cider and perry sold out by the close. Of 99 beers nominated by visitors as their beer of the festival, St Peter's Honey Porter emerged the winner, with Young's GBG30 and Grand Union IPA the runners up.

The result of the members' ballot for CAMRA South West London Pub of the Year 2002 was announced at the festival. The award, to be presented on Saturday 31 May, goes to a regular previous winner, the Priory Arms, 83 Lansdowne Way, Stockwell, an exemplary free house. Second came the Rose & Crown in Clapham Old Town, a Greene King pub with an imaginative and changing range of guest ales, and third, the Old Sergeant, a homely Young's pub in Garratt Lane, Wandsworth. To the applause of Young's Directors, fellow licensees and appreciative customers present, Branch Chairman Chris Cobbold presented a special award at the festival to retiring licensee Tom Dunlea,

honouring his hospitality and superb beer quality at the Old Sergeant over 15 years.

Few festivals go completely without a hitch. This year's festival glasses were not delivered until late on the opening Wednesday afternoon - apologies to collectors who missed them; there are some left over. Food supplies also proved inadequate on the Wednesday. Otherwise, many of the comments offered on the festival feedback forms (and now collated at <http://beerfest.org>) were complimentary, exceptions being the regular complaints from 'tickers' who cannot believe that many of the casks put on stillage on a Monday afternoon may not yet be ready for dispense by Wednesday lunchtime. Wednesday visitors were welcome to return on Thursday and Friday and many did so.

CAMRA South West London Branch would like to thank all visitors, sponsors, suppliers and, especially, staff volunteers, for making this year's festival a memorable success, and to look forward to a fourteenth Battersea festival next February.

## A GRAND DROP AT THE GRAND UNION

Named after the nearby Grand Union Canal, the Grand Union Brewery is the newest brewery to set up in Greater London. It was established in Hayes last year by John Brigham, who also owns the Old Kent Brewery in Sevenoaks. The current brewer, Tom Madeiros, has worked in a number of microbreweries including Iceni, Oakham and Dark Horse. Tom was previously an engineer and comes originally from Cape Cod in the USA. His beers reflect an international approach, using hops from Eastern Europe, the USA and Germany as well as British hops.

CAMRA's London Tasting Panel recently visited the brewery to taste the beers to prepare descriptions for the 2004 Good Beer Guide. The Grand Union has eight beers on their regular brew list of which seven were available. The Bitter is currently being reformulated. Most are on sale in a non bottled-conditioned form but are available in a cask ale format on request.

**Best Bitter** (4.1%) contains both British and East European hops, the latter giving it the typical, but pleasant, metallic notes. It is light drinking beer with some citrus notes.

**Gold** (4.2%) is a yellow coloured beer brewed with East European, German and American hops giving

fruity hop notes on the nose and in the flavour. The aftertaste is crisp and dry.

**Three's A Crowd** (4.4%) was named for the Heathrow Airport runway campaign. Brewed with German hops, this is a tawny coloured beer with a dry lingering aftertaste and some toffee notes in the aroma and taste.

**Special Bitter** (4.5%) contains American and British hops. A beer with a strong spicy, fruity aroma but is light on the palate with malt and candy notes.

**Stout** (4.8%) is brewed with roasted barley, flaked barley and crystal malt. It is a sweetish beer balanced with a dry, clean finish. There are chocolate and roasted coffee notes throughout.

**Kolsch** (4.8%) is a straw coloured beer brewed with German hops. A clean tasting beer with citrus and some slight flowery notes. The dry aftertaste is also clean with some slight bitterness.

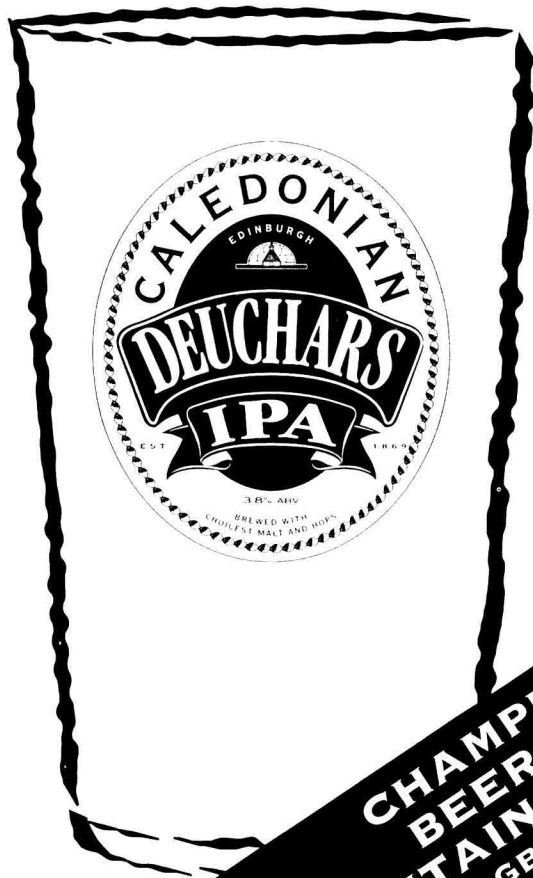
**Pilsner** (5.2%) has a flowery, hoppy aroma. The malt comes through on the flavour, as does the alcohol. The finish is slightly sweetish.

*Grand Union Brewery is at 10 Abenglen, Betam Road, Hayes, Middx UB3 1SS; 020-8573 8855; [www.gubc.co.uk](http://www.gubc.co.uk)*

Advertise in next month's LONDON DRINKER from only £45 (quarter page - all inclusive)

Call Peter Tonge now on 020 8300 7693

# YOU'RE DUE A DEUCHARS.



**CHAMPION  
BEER OF  
BRITAIN ~ 2002  
CAMRA GBBF, OLYMPIA**

**CALEDONIAN BREWERY, EDINBURGH**

# LONDON PUB OF THE YEAR 2003

## How it's decided, and your chance to participate

*Regular readers will have seen articles on the winners of CAMRA's London Pub of the Year competition. Here, Martin Butler, who co-ordinates the competition outlines how its done and how you could become one of the judges.*

Every year CAMRA runs a national pub of the year competition. We do this to recognise excellence among pubs and to encourage others to meet high standards. We are also trying to increase public awareness and interest in pubs and also achieve publicity for CAMRA's campaigning policies and priorities in relation to pubs.

In London each of the twelve branches operating in the Greater London area will put forward an entry, often the winner of a local PotY competition. Each branch appoints a member or group of members to visit each of the twelve pubs. So what are these judges looking for when they visit?

First and most important, as you might expect, is quality of cask beer (and cider/perry where appropriate). This primarily means how well the beer is kept, and a pub that scores badly in this area can be eliminated from the competition no well how it does in other categories.

We also judge style and décor of the pub. Pubs do not have to be picture postcard to score highly here.

We are looking at the extent to which the most has been made of the building, and whether the décor is appropriate, including factors such as imagination taste and restraint. We also consider that rather intangible factor atmosphere - how does it feel to be in the pub? We also look at general cleanliness under this area.

We all expect good service and a welcome when we arrive at a pub - and also a full pint of beer. We also expect good hygiene. We judge these, and the state of the toilets, under service and welcome.

A pub should be welcoming to all members of the community, for example is it female friendly; is there access and other necessary facilities and service for disabled people. We are looking to see if it's the centre of community life - and not just 'local people', but also the business, tourist, community and other communities where appropriate. All this we judge under clientele mix.

We also look to see if the pub shows sympathy with CAMRA's aims. Is real beer given a positive push and is information about the beer readily available? We judge other CAMRA issues here. For example is there a price list and is it readable and accurate. A pub promoting mild or having leaflets or posters on CAMRA's campaigns will also pick up marks here.

We also consider Good Value. This is not about how cheap the beer is but how the whole experience of the pub relates to what we have spent.

## The WINDSOR CASTLE

378 Carshalton Road • Carshalton • Surrey SM5 3PT  
Tel: 020 8669 1191



Why not join us at our  
**ANNUAL BEER FESTIVAL**  
on 24th, 25th & 26th May from 12 noon 'til close

35 Cask Ales from nationwide micro breweries

Courtyard and garden open with **daily** BBQ and  
hot salt beef sandwiches

**Saturday 24th** - an evening of live entertainment and evening of live music

**Sunday 25th** - Barbeque from 12.00 'til 6.00 and live entertainment

**Monday 26th** - Raffle ticket draw and live music with Tim Hain

***A weekend to savour and enjoy!***



## LONDON PUB OF THE YEAR 2003

Having visited each pub each group of branch judges will agree their scores and send them to the competition co-coordinator. These are collated and analysed and presented to a meeting of the judges towards the end of July. This meeting looks at the scores in detail and decides the competition winner.

Many of the London branches are looking for additional judges, and so if you are a CAMRA member and interested in a no expenses paid trip to twelve of the top pubs in London between mid April and mid July please contact your local branch (see Branch Diaries). We would particularly welcome more women judges and judges from minorities to give a judging panel that more accurately represents the drinking population of London.

### REGULAR PUB QUIZ - FOR FUN AND FUNDS

**N**ame the only country to leave the European Union? What is the legal minimum age for drinking alcohol? Which pub hosted the launch of the GBG? (Answers at the end of this article).

If you can answer these sorts of questions, then you are welcome to test your knowledge at West London CAMRA branch's regular pub quiz evenings. West London has never held a beer festival, so that fund raising by other means is most important if the branch is to function effectively. So for a modest fee your team can compete for an even more modest prize and the honour of doing your best while trying not to get too drunk.

Quiz nights will be held in the upstairs function room (recently refurbished) of the Carpenters Arms, 12 Seymour Place, Marylebone, W1 close to Marble Arch underground and Edgware Road. It's the sister pub to the highly popular Market Porter, Borough Market, SE1, with up to 6 regularly changing real ales from regionals and micros, and special requests catered for - maybe a cask for the function room! The quiz will be held monthly, on the 2nd Monday of the month: check London Drinker for details. To help funds a raffle or auction will follow some quizzes.

But most importantly it should be fun. The quiz will comprise of 60 questions in 3 rounds: 20 questions on general knowledge, 20 on pubs, beer and CAMRA, and 20 on various puzzles including photographs and even beer tasting! All CAMRA members are welcome and I urge London branches to consider sending a team or two - for an evening of fun and fun raising.

*Ray Prior*  
West London CAMRA

Answers: 1. Greenland. 2. 5 years. 3. Star Tavern SW1

If you want to find out more there is a meeting of the judges at 8pm on Thursday 3 April in the Royal Oak, Tabard Street, The Borough, SE1. We will be finalising the judging criteria for this year's competition and going through the marking scheme for new judges. But do not be put off if you cannot attend, as judges in your own branch will be able to take you through the process.

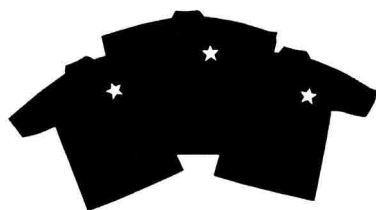
So what happens to the winner? As well as receiving a certificate and the prestige of being declared CAMRA's London Pub of the Year, the winning pub goes into the super-regional round against other pubs in the South East. The winner of this goes into the national competition, the winner of which is announced early next year.

Advertise in next month's  
**LONDON DRINKER**

from only £45 (quarter page  
- all inclusive)

Call Peter Tonge now on  
020 8300 7693

**Boregan**  
Design



Top Quality Polo shirts & T.shirts  
With your logo  
**Hand Embroidered**  
At competitive prices

Telephone 020 8677 8910  
To see samples, discuss artwork and prices

## Dear Editor

### EALING LAWN TENNIS CLUB

With regard to Colin Price's letter in the last issue of LD, I have long believed that the apocryphal story he relates actually refers to the East Sheen Lawn Tennis Club and not the Ealing Lawn Tennis Club. I have to apologise to Colin as he did 'phone me regarding his assertion but, being caught somewhat 'on the hop', wasn't able to correct him before he penned his letter.

However, it is fairly well-documented that keg beer probably started as a bright, low alcohol, brew produced towards the end of WWII by J W Green's of Luton whose head brewer saw an opportunity to slake the thirst of the many American servicemen based on airfields in Bedfordshire who were shunning the local 'warm, flat, beers' otherwise available in the area. This remained a somewhat local niche market, despite attempts by Green's to market their new product more widely, and only succeeded once they'd merged with Flower's in 1954: Green's Brewmaster Pale Ale was relaunched as Flower's Keg Bitter in 1955. Use of the 'Flower's' brand, having both a national and international reputation and only really once both had been subsumed under the Whitbread umbrella in 1962, was able to create a mass market for keg beer where Green's couldn't.

Being aware of the above, the committee of the East Sheen club approached nearby Watney's Mortlake brewery, I believe in the early '60s, with a request that they brew a long-life beer for them as the club bar was not able to maintain beer quality with the products then being supplied. The rest, as they say, is history!!

*Paul Dabrowski,  
Norwood Green, Middx*

## Dear Editor

I don't know how you find Wetherspoons as correspondents, but I never did get any response to my letter and reminder as per copies enclosed (constructive letter dated 27 December 2000, polite reminder dated 14 October 2001).

I still think I was right about this particular makeover - have you visited the White Lion of Mortimer (Stroud Green Road, N4) in its previous and present incarnations?

No doubt I shall go on using their pubs - in many areas there is simply nothing else worth patronising - but I think it was a bit shabby of them not to have answered.

*Donald Macauley,  
London W10*

*(I did receive a prompt and sympathetic response on the one occasion I wrote to Wetherspoons, four years ago, but I know that my local Branch Chairman has still received no acknowledgement, despite resending*

*his letter, after alerting concern last September over deterioration of beer range and service at the Moon Under Water, Balham: concern that has now led to deletion of that pub from the current Good Beer Guide - Ed.)*

## Dear Editor

I'm trying to find any existing pubs that were linked to Samuel Pepys, the Diarist. Please e-mail me at: [glyn\\_thomas1234@yahoo.co.uk](mailto:glyn_thomas1234@yahoo.co.uk) if you know of any.

*Glyn Thomas*

## Dear Editor

I read have read the pub name series with interest; dogs and other animals featured in the February/March issue of London Drinker but not CATS. In my vicinity the catalogue includes the Owl and Pussycat (Kingston), Cats Back (Point Pleasant) and the Maltese Cat (Roehampton). Other fine feline pubs include Cats at Woodham Walters (Essex) and the Cat in West Hoathly (Sussex). Has there been a catastrophic oversight?

*Dave Morgan,  
Kingston-upon-Thames*

## Dear Editor

I was somewhat puzzled to read that your diarist Garry Gobshite suspects I am a figment of someone's imagination (January 2003, p40). I can assure him, and indeed your readership, that I am very much a real person and certainly not a virtual offshoot of Roger Protz, though I am flattered by the comparison and will try very hard to improve my floridity to Protzian standards in future issues of What's Brewing. I'm happy to use my real name to sign my pieces, as, I assume, is Mr Gobshite.

Yours with a playful aftertaste.

*Des de Moor, London SE14  
[www.desdemoor.com](http://www.desdemoor.com)*

## SOME FORTHCOMING CAMRA BEER FESTIVALS

April 23-25, Maldon, Essex

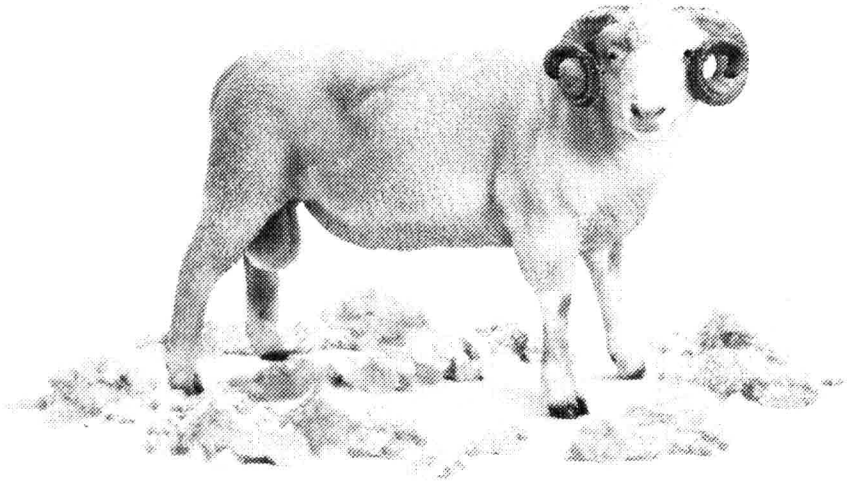
April 24-26, Dunstable, Beds

May 15-18, Yapton, West Sussex

June 9-14, Thurrock

June 18-21, Catford

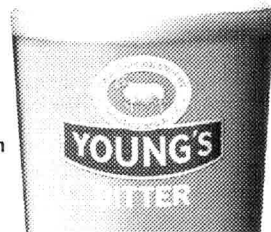
June 27-28, Kingston



# Natural

How would you describe the taste?

From the Ram Brewery Wandsworth





# BRANCH DIARIES

**Wed 30** Pub crawl in Ham, starting (8pm) Hand & Flower, Upper Ham Rd, then (8.35) New Inn, 345 Petersham Rd; (9.35) Ham Brewery Tap, and (10.20) Royal Oak, both in Ham St.

**May – Sun 4** (12noon onwards) Very social gathering at Beer Festival, Red Lion, 92/94 Linkfield Rd., Isleworth. -

**Wed 7** (8.30) Beer Festival planning meeting, Sorting Room, London Rd, Twickenham. - **Thu 15** (8.30) Pie & Mash night. Lion, Wick Rd, Teddington - £6 per head for food (variety of pies); to book call Social Sec. Ian Winfield (home 8977 9643) by 5 May. - **Wed 21** Hampton Court surveying crawl, starting (8pm) Kings Arms, Lion Gate, Hampton Court Rd, then including (9pm) Mitre Hotel at the Bridge; (10pm) Cardinal Wolsey, Hampton Ct. Rd. -

**Sat 24** Festival Staff trip with award certificate presentation to the Grand Union Brewery, Hayes, followed by a visit to the White Horse, Hedgerley, Bucks, for their Beer Festival, finishing the day at the Red Lion, Isleworth. Full details with bus pick-up details etc. mailed to all concerned. Very limited numbers: may not be able to take guests. - **Tue 27** (8.30) Branch meeting, Roebuck, 72 Hampton Rd, Hampton Hill.

Website: [www.jobin.freeseve.co.uk/rhcamra1.htm](http://www.jobin.freeseve.co.uk/rhcamra1.htm)

**SOUTH EAST LONDON. Dave Lee 020-8694 2687 (H).**

**April – Mon 7** (8pm) Branch/committee meeting, Ship & Whale, 2 Gulliver St SE16. - **Thu 17** (8pm) Social. Old Manor House, 58 Bush Rd SE8. - **Tue 22** (8pm) Social.

Market Porter, 9 Stoney St SE1. - **Mon 28** (8pm) Catford Beer Festival meeting, Ashburnham Arms 25 Ashburnham Gro, Greenwich SE10

**May – Wed 7** (8pm) Branch/committee, Two Doves, 37 Oakley Rd, Bromley Common. - **Tue 13** (8pm) Social, Priory Arms, 83 Lansdowne Way SW8. - **Sat 17** (8pm) Pub of the Year presentation, Royal Oak, Tabard Street SE1. - **Thu 22** (8pm) Social, Howard Club, 447 Rochester Way, Well Hall, Eltham SE9. - **Thu 29** (8pm) Social, Crown and Greyhound, 73 Dulwich Village SE21. - *The final Catford Beer Festival meeting is on Monday 2 June, and the Festival is open from Wednesday 18 to Saturday 21 June.*

Website: [www.selcamra.org.uk/camra3.htm](http://www.selcamra.org.uk/camra3.htm)

**SOUTH WEST ESSEX. Andrew Clifton 01708 765150 (H), [swessex@clara.co.uk](mailto:swessex@clara.co.uk)**

**April – Mon 7** London Pub Crawl. Start (7pm) Royal Oak, 44 Tabard St, SE1; then (8.30) Market Porter, 9 Stoney St (Borough Mkt) SE1; finally (9.45) Crosse Keys, 9 Gracechurch St EC3. - **Wed 16** (8.30) Out of area social. Queen's Head, 30 Lwr Anchor St, Chelmsford. - **Thu 24** (8pm) Social. 1st Maldon Beer Festival, Town Hall, Market Hill, Maldon (for further details see Dengie Hundred Brch website - [www.dengie-camra.org.uk](http://www.dengie-camra.org.uk)). - **Mon 28** (8.30) Social. Britannia, 1 Church Rd, Barking. - **Sat 30** (2:30 at Brewery) Brewery visit, Ramsgate Brewery, and then (7:30) Brewery visit, Hopdaemon Brewery, Canterbury. Coach from Chadwell Heath, Romford, Upminster and Stanford le Hope. Contact Graham Platt on 020-8220 0215.

**May – Mon 5** (12noon) 'Sunny Social', Prince of Wales, Woodham Rd, Stow Maries. First of our weekend 'summer' socs. You may cycle, take train to Woodham Ferrers Stn and then walk, or bus it, or even drive.... - **Thu 15** (8pm onwards), Pub Crawl of Devises - Well, that's where most of us will be - sorry!! - **Thu 22** (8:30) Social, Stag, Brentwood Rd (A128 nr A113) Marden Ash (Ongar) - **Thu 29** (8:30) Social. Colchester Beer Festival, Colchester

Arts Centre, Church St (close to the Mercury Theatre and Jumbo the ex-water tower) (for further details see Colchester Brch website - [www.colchestercamra.org.uk](http://www.colchestercamra.org.uk)). Website: [www.swessex.clara.net](http://www.swessex.clara.net)

**SOUTH WEST LONDON. Mark Bravery 020-8540 9183 (H) 020-7438 6565 (W), [markbravery@blueyonder.co.uk](mailto:markbravery@blueyonder.co.uk).**

**April – Mon 7** (7.30) Branch committee meeting, Pied Bull, 498 Streatham High Rd, SW16

**May – Thu 15** (7.30) Committee meeting followed (8pm) by **Branch AGM**. Priory Arms, 83 Lansdowne Way, South Lambeth SW8 (upstairs room). - **Sat 31** (8pm) Branch Pub of Year presentation for 2002. Priory Arms.

Website: [www.swlcamra.org](http://www.swlcamra.org) Cricket: contact Andy Robinson 020-7403-5566 (W) or 020-8653-8885 (H)

**WATFORD & DISTRICT. Martin Few 01923 252412 (H), [watfordcamra@hotmail.com](mailto:watfordcamra@hotmail.com)**

**April – Wed 9** Watford Social. Southern Cross (8.30), Nascot Arms (9.15), Estcourt Arms (10pm). - **Sat 19** (1pm) Watford Social. Moon Under Water.

**May – Wed 7** Chorleywood Social. Black Horse (8.30), Rose and Crown (9.15), Old Shepherd (10pm). - **Fri 16** (8.30) Mild Month Social. Swan, Bushey. - **Sun 25** (1pm) West Herts Sports Club, to be confirmed: phone contact for details. - **Sat 31** May: Hunton Bridge Social. King's Lodge (8.30), Dog and Partridge (9.15), King's Head (10pm).

Website: [www.watfordcamra.org.uk](http://www.watfordcamra.org.uk)

**WEST LONDON. Kevin O'Donovan, 07990 972 424 (M), [westlondoncamra@aol.com](mailto:westlondoncamra@aol.com)**

**April – Mon 7** (8pm) Branch meeting, Victoria, 10a Strathearn Pl, W2 ('Theatre Bar' upstairs). - **Thu 24** (8pm) Inter-Branch Quiz. Ealing Lawn Tennis Club, Daniel Rd off Creffield Rd, Ealing Common. - **Tue 26** (8pm) Social. Central Bar, W12 Shopping Centre, W12.

**May – Wed 7** (7pm). Goodbye Social. Paviours Arms, Page St, SW1. - **Fri 16** (7.30). **Branch AGM**. Victoria, 10a Strathearn Pl, W2 ('Theatre Bar' upstairs). - **Mon 26** Social and crawl: 2pm Ship & Shovell, 1-3 Craven Passage, WC2, leave approx 3pm for crawl of local area.

**WEST MIDDLESEX. Paul Dabrowski (Social Secretary) 020-8571-9146 (H) 0118-923 7445 (W).**

**April – Wed 9** (8.30) Branch meeting. Questor's Theatre Grapevine Bar, Mattock La, Ealing. - **Fri 18** (12.30) Joint Beerex Social with Richmond & Hounslow. Fox, Green La, Hanwell. - **Thu 24** (8pm) Inter-Branch Quiz. Ealing Lawn Tennis Club, Daniel Rd off Creffield Rd, Ealing Common. - **Wed 30** (8pm) Brewery Social. Grand Union, Abenglen Ind Est, Betam Rd, Hayes.

**May – Sun 4** (12.30) Joint Beerex Social with Richmond & Hounslow. Red Lion, Linkfield Rd, Isleworth. - **Thu 8** (8.30) Two-pub Hillingdon Social. Royal Oak, Ryefield Ave, then Master Brewer, Western Ave. - **Wed 14** (8.30) **Branch AGM**. De Burgh Arms, High Street, West Drayton (membership cards reqd). - **Wed 21** (8pm) New Members' Night. Wheatheaf, Haven La, Ealing. - **Thu 29** (8pm) London Drinker Distribution. Magpie & Crown, High St, Brentford (Pick-up), then Fox, Green La, Hanwell.

Electronic copy deadline for the April/May edition: 14th May 2003. Please send entries to [geoff@coherent-tech.co.uk](mailto:geoff@coherent-tech.co.uk).



# THE WINE COMPANY

93/95 STOKE ROAD, SLOUGH

BUCKS SL2 5BJ

TEL: 01753 797579 FAX: 01753 797578

## West London's finest range of Specialist Ales.

British Ales from Orkney, Isle of Arran,  
Scotland, Shetlands.

Beers from Bathams, Oakham, Itchen Valley.

Cornish and Devon beers.

Yorkshire beers from Cropton, Rudgate etc.

The very rare Cauldron Snout from High Force.

Darwin Richmond, organic and fruit flavoured beer.

Bavarian Weizen, Festival beers, Bock beers.

Classic German Pilsners, Schlenkerla Rauchbier

Trappist and Abbey beers from Belgium.

Lambic Fruit beers.

Belgian Speciality beers.

◆ Glasses ◆ Delivery Service

◆ Beer Finding Service

◆ Open 7 days a week

# LOOK FORWARD TO SEEING YOU SOON

# CASK MARQUE AWARDS

**F**ormed in 1997, Cask Marque is an independent accreditation scheme jointly funded by participating brewers and retailers, which recognises excellence in the service of cask ale. The award is made not to the pub but to the licensee, who has to pass two unannounced inspections with assessors sampling up to six beers checking temperature, appearance, aroma and taste. Further inspections are made twice a year, with additional random inspections triggered by customer comment. For more information visit the Cask Marque website at [www.cask-marque.co.uk](http://www.cask-marque.co.uk).

The following pubs and clubs in Greater London have licensees who have been awarded a Cask Marque plaque. An asterisk indicates a pub listed in the 2003 Good Beer Guide (ib indicates an 'Inn Brief' listing.) The figures in brackets cross-refer to CAMRA's local pub guides and updates (see Capital Pubcheck for explanation).

Pub ownership is not recorded by Cask Marque; references have been compiled by CAMRA from the latest available information. Some ownerships may have changed.

## CENTRAL

EC1, ARTILLERY ARMS, 102 Bunhill Row. Fuller. (E9)  
 EC1, BLEEDING HEART TAVERN, 10 Greville St. Free House. (U143)  
 EC1, BUTCHERS HOOK & CLEAVER\*, 61-63 West Smithfield. Fuller. (U151)  
 EC1, CASTLE, 34/35 Cowcross St. Six Continents. (E13, U70)  
 EC1, CITY PRIDE, 28 Farringdon La. Fuller. (E14)  
 EC1, MASQUE HAUNT, 168-172 Old St. Wetherspoon. (U99)  
 EC1, MELTON MOWBRAY, 18 Holborn. Fuller. (U87)  
 EC1, OLD RED LION, 418 St John St. Punch. (E21, U67, U159)  
 EC1, PRINT WORKS, 113-117 Farringdon Rd. Wetherspoon. (U167)  
 EC1, SIR CHRISTOPHER HATTON, 4 Leather Lane. Six Continents. (E24)  
 EC1, SIR JOHN OLDCASTLE, 29-35 Farringdon Rd. Wetherspoon. (U120)  
 EC2, GLOBE/JOHN KEATES AT THE MOORGADE, 83/85 Moorgate. Six Continents. (E31, E33, U119, U134)  
 EC2, GREEN MAN, 1 Poultrey. Wetherspoon. (U142)  
 EC2, HAMILTON HALL, Liverpool St Station Concourse. Wetherspoon. (U68, U128)  
 EC2, MAGPIE, 12 New St. Six Continents. (E33, U82, U151)  
 EC2, RACK & TENTER, Tenter House, 45 Moorfields. Wizard Inns, formerly PENNY BLACK. (E34, U70, U74, U76, U168)  
 EC2, RED HERRING, 49 Gresham Rd. Fuller. Formerly 49 GRESHAM STREET. (U2, U162)  
 EC2, WHITE HART, 121 Bishopsgate. Six Continents. (E36, U64, U67)  
 EC3, COUNTING HOUSE\*, 50 Cornhill. Fuller. (U131, U155)  
 EC3, CROSSE KEYS\*, 7-12 Gracechurch St. Wetherspoon. (U147, U155)  
 EC3, EAST INDIA ARMS, 67 Fenchurch St. Six Continents. (E40, U98, U99, U119, U163)  
 EC3, GOOSE AT FENCHURCH, 2 New London St. Six Continents, formerly CITY OF LONDON YEOMAN. (E39, U70, U151, U159)  
 EC3, HUNG, DRAWN & QUARTERED, 26/27 Great Tower St. Fuller. (U111)  
 EC3, LIBERTY BOUNDS, 15 Trinity Sq. Wetherspoon. (U134)  
 EC3, OLD TEA WAREHOUSE, Cree Church Buildings, 4-8 Creechurch La. Greene King (U125)  
 EC3, RED LION, 8 Lombard Ct. Six Continents. (E42, U151)  
 EC3, SHIP, 11 Talbot Court. Six Continents. (E42, U131, U151)  
 EC3, SWAN\*, Ship Tavern Passage, 77-80 Gracechurch St. Fuller. (E43, U70)  
 EC4, BANKER, Cousin Lane. Fuller. (E45)  
 EC4, BLACK FRIAR, 174 Queen Victoria St. Six Continents. (E46, U151)  
 EC4, HARROW\*, 42 Whitefriars St. Six Continents. (E49)  
 EC4, MASH TUN, 80 Farringdon St. Hall & Woodhouse, formerly HOOP & GRAPES, also SAMUELS for a while. (E49, U69, U140, U164, U170)  
 EC4, OLD BANK OF ENGLAND\*, 194 Fleet St. Fuller. (U95)  
 EC4, OLD BELL, 95 Fleet St. Six Continents. (E51, U151)  
 EC4, PAVILION END, 23 Watling St. Wizard Inns. (E52, U161, U168)  
 EC4, SAMUEL PEPYS, Stew Lane, High Timber St. Six Continents. (E54, U153)  
 EC4, WILLIAMSON'S TAVERN, 1 Groveland Ct, Bow La. Six Continents. (E56, U119, U151)  
 W1(F), CARPENTERS ARMS, 68/70 Whitfield St. Six Continents. (W28, U82, U93)



W1(F), KING & QUEEN, 1 Foley St. Free House. (W29, U66, U84, U88, U161)  
 W1(F), MARQUIS OF GRANBY, 2 Rathbone St. Six Continents. (W29, U74, U92)  
 W1(F), PRINCE OF WALES FEATHERS, 8 Warren St. Six Continents. (W32)  
 W1(F), TOTTENHAM, 6 Oxford St. Six Continents. (W32, U48, U89, U134, U151)  
 W1(Mar), CARPENTERS ARMS\*ib, 12 Seymour Place. Free House. (W34, U92, U95, U120)  
 W1 (Mar), MASONS ARMS, 51 Upper Berkeley St. Hall & Woodhouse (W35, U106, U160)  
 W1(May), BLACK LION & FRENCH HORN, 5 Pollen St. Six Continents. (W38, U90)  
 W1(May), BRUTONS, 15 Bruton La. Wizard Inns. (W38, U100, U110, U153)  
 W1(May), FULLERS ALE LODGE, 11 Avery Row. Fuller. Formerly YATES'S WINE LODGE. (W40, U90, U116)  
 W1(May), SAMUEL PEPYS, 29 Clarges St. Six Continents. (W40, U80, U92)  
 W1(May), SHELLEYS, 10 Stafford St. Six Continents. (W40, U98, U141, U151)  
 W1(S), ARGYLL ARMS, 18 Argyll St. Six Continents. (W41, U80, U90, U151)  
 W1(S), CARLISLE ARMS, 2 Bateman St. Six Continents. (W41)  
 W1(S), CROWN, 64 Brewer St. Six Continents. (W42, U90)  
 W1(S), DOG & DUCK, 18 Bateman St. Six Continents. (W42, U93, U150, U151)  
 W1(S), MIDAS TOUCH, 4 Golden Sq. Hall & Woodhouse. (U147)  
 W1(S), MOON & SIXPENCE, 181-185 Wardour St. Wetherspoon. (U93)  
 W1(S), SHASTON ARMS, 4/6 Ganton St. Hall & Woodhouse. (U158)  
 W1(S), SHIP\*, 116 Wardour St. Fuller. (W44, U57)  
 W1(S), Spice of Life, 38 Romilly St. McMullen. (W44, U53, U84)  
 WC1, GOOSE, 31 Marchmont St. Six Continents, formerly GOOSE & GRANITE and originally MARQUIS OF CORNWALLIS. (W47, N24, U124, U159)  
 WC1, COLLEGE ARMS, 18 Store St. Broken Foot Inns. Formerly UNIVERSITY TAVERN. (W51, N31, U167)  
 WC1, PAKENHAM ARMS\*, 1 Pakenham St. Free House. (W49, N28)  
 WC1, PENDERELS OAK\*, 283-288 High Holborn. Wetherspoon. (U133)  
 WC2, ANGEL & CROWN, 58 St Martins Lane. Six Continents. (W52)  
 WC2, CAMBRIDGE, 93 Charing Cross Rd. Six Continents. (W52, U58, U151)  
 WC2, COAL HOLE, 91/92 Strand. Six Continents. (W53, U62, U92, U151)  
 WC2, FREEMASONS ARMS, 81/82 Long Acre. Greene King. (W53)  
 WC2, KNIGHTS TEMPLAR\*, 95 Chancery La. Wetherspoon. (U145)  
 WC2, MOON UNDER WATER\*, 105/107 Charing Cross Rd. Wetherspoon. (U120, U150)  
 WC2, MOON UNDER WATER, 28 Leicester Sq. Wetherspoon. (U73)  
 WC2, NAGS HEAD, 10 James St. McMullen. (W55, U50, U92, U116)  
 WC2, SHAKESPEARES HEAD, Africa House, 64-78 Kingsway. Wetherspoon. (U134)  
 WC2, SHIP & SHOVELL\*, 1-3 Craven Passage. Hall & Woodhouse. (W56, U131, U137, U159)  
 WC2, THEODORE BULLFROG, 26-30 John Adam St. Broken

# CASK MARQUE AWARDS

Foot Inns. Formerly ST MARTINS TAVERN. (W56, U139, U149, U161, U167)

WC2, WELLINGTON, 351 Strand. Six Continents. (W57)

## EAST

E1, FIRST & LAST, 15 Little Somerset St. Six Continents, formerly DUKE OF SOMERSET. (E65, U134)

E1, GOODMAN'S FIELD, 87-91 Mansell St. Wetherspoon. (U163)

E1, HALF MOON, 213-223 Mile End Rd. Wetherspoon. (U138)

E1, SHOOTING STAR, 125-129 Middlesex St. Fuller. (U137)

E2, CAMDENS HEAD\*, 456 Bethnal Green Rd. Wetherspoon. (E79, U74)

E3, MATCH MAKER, 580/586 Roman Rd. Wetherspoon. (U160)

E4, KINGS FORD\*, 250/252 Chingford Mount Rd. Wetherspoon. (U119)

E4, PLOUGH, Mott St. McMullen. (E96, U162)

E4, ROYAL OAK, 219 Kings Head Hill. McMullen. (E97, U112, U119)

E4, THOMAS WILLINGALE, 134 Station Rd. Wizard. (U152, U161)

E6, MILLERS WELL, 419-421 Barking Rd. Wetherspoon; formerly Spirits Bar. (E105, U80)

E7, HUDSON BAY, 1-5 Upton La. Wetherspoon. (U143, U162)

E10, DRUM, 557-559 Lea Bridge Rd. Wetherspoon. (E123, U161)

E10, KING WILLIAM THE FOURTH, 816 High Rd. Free House, formerly William IV. (E125, U85, U109, U130, U157, U158, U169)

E11, GEORGE\*, 159 High St, Wanstead. Wetherspoon. (E128, U71)

E11, WALNUT TREE, 857-861 High Rd, Leytonstone. Wetherspoon. (U124)

E14, LEDGER BUILDING, 4 Hertsmere Rd, West India Quay. Wetherspoon. (U160)

E15, GOLDENGROVE, 146-148 The Grove. Wetherspoon. (U82, U105, U120, U162)

E15, GOOSE ON BROADWAY, 78-102 Broadway. Six Continents. (U159)

E15, SWAN, 31 Broadway. Wizard Inns. (E155, U113, U134, U140)

E17, GOOSE, 264 Hoe St. Six Continents, formerly GOOSE & GRANITE and TOWER HOTEL. (E169, U111, U124, U163, U165)

BARKING, BARKING DOG, 61 Station Parade. Wetherspoon. (X10)

BARKINGSIDE, NEW FAIRLOP OAK, Fencepiece Rd. Wetherspoon. (X12)

CHADWELL HEATH, EVA HART\*, 1128 High Rd. Wetherspoon. (X27)

COLLIER ROW, ASPEN TREE, Gobions Ave. Greene King, formerly PICKLED NEWT. (X43, U168)

COLLIER ROW, COLLEY ROWE INN, 54/56 Collier Row Rd. Wetherspoon. (X43)

DAGENHAM, LORD DENMAN, 270/272 Heathway. Wetherspoon. (X45)

GOODMAYES, STANDARD BEARER, 7-13 Goodmayes Rd. Wetherspoon. (U152)

HORNCHURCH, JJ MOONS, 48 High St. Wetherspoon. (X71)

HORNCHURCH, LLOYDS NO 1 BAR, 168 High St. Wetherspoon (Lloyds No 1), formerly WHITE HART and NEWT & CUCUMBER. (X71, U153, U157)

ILFORD, GREAT SPOON OF ILFORD, 114/116 Cranbrook Rd. Wetherspoon. (X73)

ILFORD, LLOYDS NO 1 BAR, 71 Ilford Hill. Wetherspoon (Lloyds No 1), formerly GREENE CASTLE, BLAH BLAHS and RAT & CARROT. (X73, U144, U158, U163, U167)

ROMFORD, GOOSE, 143 South St. Six Continents, formerly MORLAND ARMS. (X102, U151, U157)

ROMFORD, MOON & STARS, 99-103 South St. Wetherspoon. (X102)

UPMINSTER, CRUMPLED HORN, 33-37 Corbets Tey Rd. Wizard. (U157)

WOODFORD GREEN, CRICKETERS\*, 299/301 High St. McMullen. (X131)

## NORTH

N1, ANGEL, 3/5 Islington High St. Wetherspoon; formerly BARTIZAN and BAR CENTRAL. (U113, U123, U141)

N1, BULL, 100 Upper St. Six Continents, formerly FINNOCK & FIRKIN. (N44, U151, U159, U168)

N1, CANONBURY, 21 Canonbury Pl. Six Continents, formerly CANONBURY TAVERN. (N39, U170)

N1, GLASS WORKS, Unit 5/6, N1 Centre, Parkfield St. Wetherspoon (Lloyds No 1) (U167)

N1, ISLAND QUEEN, 87 Noel Rd. Six Continents. (N48, U120)

N1, WENLOCK ARMS\*, 26 Wenlock Rd. Free House. (N62)

N1, WHITE SWAN, 251-256 Upper St. Wetherspoon. (U158)

N2, WINDSOR CASTLE, The Walks, off Church La. McMullen. (N67)

N4, WHITE LION OF MORTIMER, 125/127 Stroud Green Rd. Wetherspoon. (N77)

N6, FLASK, 77 Highgate West Hill. Six Continents. (N82, U151)

N6, GATEHOUSE, 1 North Rd. Wetherspoon. (N82)

N7, CORONET, 338-346 Holloway Rd. Wetherspoon. (U112)

N8, TOLL GATE\*, 26-30 Turnpike La. Wetherspoon. (N96)

N12, TALLY HO, 749 High Rd. Wetherspoon. (N112)

N13, WHOLE HOG\*, 430-434 Green Lanes. Wetherspoon. (N115)

N14, NEW CROWN\*, 80-84 Chase Side. Wetherspoon. (U111)

N16, DANIEL DEFOE, 102 Stoke Newington Church St. Wells; formerly STEPTOES. (N131, U158)

N16, ROCHESTER CASTLE\*, 143-145 Stoke Newington High St. Wetherspoon. (N130, U160)

N18, GILPINS BELL, 50-54 Fore St. Wetherspoon. (U138)

N22, GOOSE, 203 High Rd. Six Continents, formerly GOOSE & GRANITE and NAGS HEAD. (U156, U151, U158)

N22, WETHERSPOONS, Unit 5, Hollywood Green, High Rd. Wetherspoon. (U154)

BARNET (EN5), KINGS HEAD, 84 High St. McMullen. (N251, H19)

BARNET (EN5), MOON UNDER WATER, 148 High St. Wetherspoon. (N252, H19)

BARNET (EN5), OLD RED LION, Underhill, Great North Rd. McMullen. (N252, H20)

BARNET (EN5), QUEENS ARMS, Great North Rd. McMullen. (N252, H20)

ENFIELD (EN1), JOLLY BUTCHERS, 168 Baker St. McMullen. (N230)

ENFIELD EAST (EN3), GREYHOUND, 425 Ordnance Rd, Enfield Lock. McMullen. (N240)

ENFIELD EAST (EN3), PICTURE PALACE, Howards Hall, High St, Ponders End. Wetherspoon. (U160)

ENFIELD WEST (EN2), CRICKETERS, 19 Chase Side Pl. McMullen. (N233)

ENFIELD WEST (EN2), GEORGE\*, 5 The Town. Six Continents. (E234, U166)

ENFIELD WEST (EN2), JOLLY FARMERS, 92 Enfield Rd. McMullen. (N235, U109)

ENFIELD WEST (EN2), MOON UNDER WATER, 115/117 Chase Side. Wetherspoon. (N236, U109)

ENFIELD WEST (EN2), PLOUGH, Cattlegate Rd. McMullen. (N236)

ENFIELD WEST (EN2), ROBIN HOOD, 240 The Ridgeway. McMullen. (N237)

ENFIELD WEST (EN2), WONDER, 1 Batley Rd. McMullen. (N237)

NEW BARNET (EN4), LORD KITCHENER, 49 East Barnet Rd. McMullen. (N247, H84)

NEW BARNET (EN4), RAILWAY BELL\*, 13 East Barnet Rd. Wetherspoon. (N247, H84)

## NORTH WEST

NW1, EUSTON FLYER, 83-87 Euston Rd. Fuller. (U131, U159)

NW1, ICE WHARF, Units 1 & 2, Suffolk Wharf off Jamestown Rd. Wetherspoon (Lloyds No 1). (U165)

NW1, MAN IN THE MOON, 40-42 Chalk Farm Rd. Wetherspoon. (N170)

NW1, METROPOLITAN BAR, 7 Station Appr, Baker Street Stn, Marylebone Rd. Wetherspoon. (U154)

NW1, WINDSOR CASTLE, 98 Park Rd. Brakspear. (N177, U131, U144, U156)

NW2, BEATEN DOCKET\*, 50-54 Cricklewood Broadway. Wetherspoon. (N179)

NW3, GARDEN GATE, 14 South End Rd. Six Continents, formerly RAILWAY TAVERN. (N189, U145, U152)

NW3, HOLLY BUSH, 22 Holly Mount. Punch. (N186, U152, U157)

NW3, THREE HORSESHOES, 28 Heath Rd. Wetherspoon. (N190, U110, U146, U159)

# CASK MARQUE AWARDS

NW3, SPANIARDS INN, Spaniards Rd. Six Continents. (N190)  
 NW3, WETHERSPOONS, 1st Floor, O2 Centre, 255 Finchley Rd. Wetherspoon. (U161)  
 NW9, JJ MOONS, 553 Kingsbury Rd. Wetherspoon. (N217, U153)  
 NW9, MOON UNDER WATER, 10 Varley Parade, Edgware Rd, Colindale. Wetherspoon. (N218, U109)  
 NW10, COLISEUM, 3/5 Manor Park Rd, Harlesden. Wetherspoon. (N222)  
 NW10, OUTSIDE INN, 312/314 Neasden La. Wetherspoon. (N224)  
 HAREFIELD, KINGS ARMS, 6 Park Lane. Punch (W108)  
 HARROW, FAT CONTROLLER, 362-366 Station Rd. Regent Inns. (U108)  
 HARROW, MOON ON THE HILL, 373-375 Station Rd. Wetherspoon. (U62)  
 HARROW, WHITE HORSE, 50 Middle Rd. Free House. (W114, U151)  
 KENTON, NEW MOON, 25/26 Kenton Park Parade. Wetherspoon. (U66)  
 NORTHWOOD, SYLVAN MOON\*, 27 Green La. Wetherspoon. (U82)  
 NORTHWOOD, WILLIAM JOLLE, 53 Joel St. Wetherspoon. (U132)  
 PINNER, MOON & SIXPENCE, 250 Uxbridge Rd, Hatch End. Wetherspoon. (U66)  
 PINNER, VILLAGE INN\*, 402-408 Rayners La. Wetherspoon. (U81, U158)  
 STANMORE, MAN IN THE MOON, 1 Buckingham Parade, The Broadway. Wetherspoon. (U82)  
 WEMBLEY, JJ MOONS, 397 High St. Wetherspoon. (U59, U86)

## SOUTH EAST

SE1, BARROWBOY & BANKER, 6/8 Borough High St. Fuller. (U120)  
 SE1, BRIDGE HOUSE, 218 Tower Bridge Rd. Free House. (SE11, U102, U105, U131, U139)  
 SE1, COOPERS, Opposite Platforms 2/3, Waterloo Main Line Station Concourse. Select Service Partner. (U102, U160, U170)  
 SE1, HORSESHOE INN, 26 Melior St. Free House. (SE22)  
 SE1, LEATHER EXCHANGE, 15 Leathermarket St. Fuller, formerly JUGGLERS ARMS. (SE22, U158)  
 SE1, MAD HATTER, 3-7 Stamford St. Fuller. (U133)  
 SE1, OLD THAMESIDE INN, Pickfords Wharf, Clink St. Six Continents. (SE28, U105, U151)  
 SE1, POMMELERS REST, 196-198 Tower Bridge Rd. Wetherspoon. (U139)  
 SE1, ROYAL OAK\*, 44 Tabard St. Harvey. (SE31, U112, U116, U128)  
 SE1, WELLINGTON, 81/83 Waterloo Rd. Wizard Inns. (SE37, U102, U168)  
 SE1, WETHERSPOONS, 125 Newington Causeway. Wetherspoon. (U156)  
 SE4, BROCKLEY BARGE\*, 184 Brockley Rd. Wetherspoon, formerly BREAKSPEARE ARMS. (SE51, U156)  
 SE5, FOX ON THE HILL, 149 Denmark Hill. Wetherspoon. (SE58)  
 SE6, LONDON & RYE\*, 109 Rushey Green. Wetherspoon. (U154)  
 SE6, TIGERS HEAD, 350 Bromley Rd. Wetherspoon. (SE69, U102)  
 SE8, DOG & BELL\*, 116 Prince St. Free House. (SE79)  
 SE9, BANKERS DRAFT, 80 Eltham High St. Wetherspoon. (SE85)  
 SE10, GATE CLOCK, Creek Rd (adjacent Cutty Sark DLR Station). Wetherspoon. (U170)  
 SE10, PILOT, 68 River Way. Free House. (SE99)  
 SE12, EDMUND HALLEY, 25-27 Lee Gate, Lee Green. Wetherspoon. (U138)  
 SE13, WATCH HOUSE\*, 198-204 Lewisham High St. Wetherspoon. (U127)  
 SE15, KENTISH DROVERS, 71-79 Peckham High St. Wetherspoon. (U154)  
 SE16, BLACKSMITHS ARMS, 257 Rotherhithe St. Fuller. (SE144)  
 SE16, SURREY DOCKS, 185 Lower Rd. Wetherspoon, formerly WARRIOR. (SE153, U115, U124)  
 SE18, GREAT HARRY, 7-9 Wellington St. Wetherspoon. (U154, U161)



SE19, POSTAL ORDER, 33 Westow St. Wetherspoon. (U120)  
 SE20, MOON & STARS\*, 164-166 High St, Penge. Wetherspoon. (U99, U102)  
 SE23, CAPITOL, 11-21 London Rd. Wetherspoon. (U159)  
 SE25, CLIFTON ARMS, 21 Clifton Rd. Free House (ex-Allied). (SE215)  
 SE25, WILLIAM STANLEY, 7/8 High St. Wetherspoon. (U142)  
 SE26, WINDMILL, 125-131 Kirkdale. Wetherspoon. (U158)  
 BELVEDERE, VICTORIA, 2 Victoria St. Punch. (3SE207, K32, U151)  
 BEXLEYHEATH, LLOYDS NO 1 BAR, Market Place. Wetherspoon (Lloyds No 1). (U166)  
 BEXLEYHEATH, WRONG 'UN, 234/236 Broadway, Wetherspoon. (U93, K35, U157)  
 BROMLEY, PARTRIDGE, 194 High St. Fuller. (U120, U158)  
 BROMLEY, RICHMAL CROMPTON, 23 Westmoreland Place. Wetherspoon, formerly WETHERSPOONS. (U149, U170)  
 BROMLEY, TOM FOOLEY, 204-206 High St. Fuller. Formerly BAR STANZA and BAR COAST. (U131, U158, U163)  
 CROYDON, BUILDERS ARMS, 65 Leslie Park Rd. Fuller. (3SE236)  
 CROYDON, GEORGE, 17-21 George St. Wetherspoon. (U80, U81, U86)  
 CROYDON, GOOSE ON THE MARKET, 1-4 Surrey St. Six Continents. (U159)  
 CROYDON, PORTER & SORTER, Billington Hill. Wizard Inns. (3SE248, U49, U108, U136, U168)  
 CROYDON, ROYAL STANDARD\*, 1 Sheldon St. Fuller. (3SE249)  
 CROYDON, SHIP, 47 High St. Wizard Inns. (3SE250, U43, U60, U99, U137)  
 CROYDON, SHIP OF FOOLS, 9-11 London Rd. Wetherspoon. (U150)  
 CROYDON, SKYLARK, 34-36 South End. Wetherspoon. (U127)  
 CROYDON, SPREAD EAGLE, 39-41 Katherine St. Fuller. (U120)  
 ORPINGTON, HARVEST MOON\*, 141/143 High St. Wetherspoon. (U99)  
 PETTS WOOD, SOVEREIGN OF THE SEAS\*, 109/111 Queensway. Wetherspoon. (U102)  
 PURLEY, FOXLEY HATCH, 8/9 Russell Hill Parade, Russell Hill Rd. Wetherspoon. (U89)  
 SELSDON, SIR JULIAN HUXLEY\*, 152/154 Addington Rd. Wetherspoon. (U154)  
 SOUTH CROYDON, CROWN & SCEPTRE, 32 Junction Rd. Fuller. (3SE276, U83)  
 THORNTON HEATH, WETHERSPOONS, 2-4 Ambassador Hse, Brigstock Rd. Wetherspoon. (U141)  
 WELLING, NEW CROSS TURNPIKE, 55 Bellegrove Rd. Wetherspoon. (U140)

## SOUTH WEST

SW1(B), GRENADIER, 18 Wilton Row. Scottish & Newcastle. (SW37)  
 SW1(B), GROUSE & CLARET, 14/15 Little Chester St. Hall & Woodhouse. (SW37)  
 SW1(B), STAR TAVERN\*, 6 Belgrave Mews West. Fuller. (SW39)  
 SW1(B), TURKS HEAD, 10 Motcomb St. Six Continents. (SW40)  
 SW1(P), JUGGED HARE\*, 172 Vauxhall Bridge Rd. Fuller. (SW41)  
 SW1(SJ), LORD MOON OF THE MALL\*, 16/18 Whitehall. Wetherspoon. (SW45)  
 SW1(SJ), OLD SHADES, 37 Whitehall. Six Continents. (SW46)  
 SW1(SJ), RED LION, 2 Duke of York St. Six Continents. (SW46, U151)  
 SW1(SJ), WALKERS (OF ST JAMES'S), 32A Duke St, St James's. Six Continents. (SW46, U151)  
 SW1(W), SANCTUARY, 33 Tothill St. Fuller. (U139)  
 SW1(W), WESTMINSTER ARMS\*, 9 Storeys Gate. Broken Foot Inns. (SW50, U168)  
 SW1(W), WETHERSPOONS\*, 1st Floor, Victoria Main Line Stn Concourse. Wetherspoon. (SW50)  
 SW1(W), WILLOW WALK, 25 Wilton Rd. Wetherspoon. (U150)  
 SW2, CROWN & SCEPTRE\*, 2A Streatham Hill. Wetherspoon. (SW52, U146)  
 SW3, BLENHEIM, 27 Cale St. Hall & Woodhouse. (SW55)  
 SW3, HOUR GLASS, 279 Brompton Rd. Six Continents. (SW56)  
 SW3, SURPRISE (IN CHELSEA)\*, 6 Christchurch Terr. Six Continents. (SW58, U125)

# CASK MARQUE AWARDS

**SW4, GOOSE & GRANITE**, 196 Clapham High St. Six Continents. (SW60, U145)  
**SW5, BLACKBIRD**®, 209 Earls Court Rd. Fuller. (SW62)  
**SW5, DRAYTON ARMS**, 153 Old Brompton Rd. Six Continents. (SW62, U153)  
**SW6, OYSTER ROOMS**, Unit 3, Fulham Broadway Centre, Fulham Broadway. Wetherspoon (Lloyds No 1). (U168)  
**SW6, WHITE HORSE**®, 1 Parsons Green. Six Continents. (SW71, U168)  
**SW7, HOOP & TOY**, 34 Thurlow Pl. Scottish & Newcastle. (SW72)  
**SW7, QUEENS ARMS**, 30 Queens Gate Mews. Six Continents. (SW73)  
**SW8, PRIORY ARMS**®, 83 Lansdowne Way. Free House. (SW79, U146)  
**SW9, BEEHIVE**, 407/409 Brixton Rd. Wetherspoon. (SW81)  
**SW11, ASPARAGUS**, 1-13 Falcon Rd. Wetherspoon. (U138)  
**SW11, BEEHIVE**, 197 St Johns Hill. Fuller. (SW86, U168)  
**SW11, FALCON**, 2 St Johns Hill. Six Continents. (SW88, U144, U159)  
**SW11, GROVE**, 279 Battersea Park Rd. Laurel. (SW89, U159)  
**SW11, NORTHCOTE**, 2 Northcote Rd. Scottish & Newcastle. (SW89)  
**SW11, WOODMAN**, 60 Battersea High St. Hall & Woodhouse. (SW90, U146)  
**SW12, MOON UNDER WATER**, 194 Balham High Rd. Wetherspoon. (SW92, U146)  
**SW15, JOLLY GARDENERS**, 61/63 Lacy Rd. Six Continents. (SW101)  
**SW15, RAILWAY**, 202 Upper Richmond Rd. Wetherspoon. (SW103)  
**SW15, WHISTLE & FLUTE**, 46-48 High St. Fuller, formerly P SHANNON & SONS. (SW103, U156)  
**SW16, HOLLAND TRINGHAM**, 107/109 Streatham High Rd. Wetherspoon. (U142)  
**SW16, MOON UNDER WATER**, 1327 London Rd, Norbury. Wetherspoon. (SW108)  
**SW17, HOPE**, 1 Bellevue Rd. Six Continents, formerly FAITH & FIRKIN. (SW108, U146, U151, U152, U159, U166)  
**SW17, JJ MOONS**, 56A Tooting High St. Wetherspoon. (SW109, U135, U151, U159)  
**SW18, GRID INN**, 22 Replingham Rd, Southfields. Wetherspoon. (SW112)  
**SW18, ROSE & CROWN**, 134 Wandsworth High St. Wetherspoon; formerly Gleeson & Sons Corner House. (SW112, U141, U149, U151)  
**SW19, BREWERY TAP**®, 68/69 High St, Wimbledon. Laurel. (SW116)  
**SW19, PRINCE OF WALES**, 2 Hartfield Rd. Scottish & Newcastle. (SW118, U150)  
**SW19, WIBBAS DOWN INN**, 6-12 Gladstone Rd. Wetherspoon. (SW120)  
**SW19, WILLIAM MORRIS**, 20 Watermill Way, Merton Abbey Mills. Broken Foot Inns. (SW121, U142)  
**CARSHALTON, FOX & HOUNDS**, 41 High St. Punch Taverns (ex-Allied). (SW129, U130)  
**CARSHALTON, RAILWAY TAVERN**, 47 North St. Fuller. (SW130)  
**CHEAM, WETHERSPOONS**, 552-556 London Rd, North Cheam. Wetherspoon. (SW133)  
**KINGSTON, BRICKLAYERS ARMS**, 53 Hawks Rd. Greene King (ex-Morland). (SW140)  
**KINGSTON, DRUIDS HEAD (HOGSHEAD)**, 3 Market Place. Laurel. (SW141)  
**KINGSTON, KINGS TUN**, 153-157 Clarence St. Wetherspoon. (U126)  
**KINGSTON, WILLOUGHBY ARMS**®, 47 Willoughby Rd. Laurel. (SW144, U153)  
**KINGSTON, WYCH ELM**®, 93 Elm Rd. Fuller (SW145)  
**MITCHAM, WHITE LION OF MORTIMER**, 223 London Rd. Wetherspoon. (SW150)  
**MORDEN, LADY ST HELIER**, 33 Aberconway Rd. Wetherspoon, formerly Wetherspoons. (SW151, U147)  
**NEW MALDEN, BAR MALDEN**, 1-3 St Georges Sq. Wizard Inns. (SW154)  
**RICHMOND, MARLBOROUGH**, 46 Friars Stile Rd. Six Continents. (SW155, U151)  
**SURBITON, CAP IN HAND**, 174 Hook Rise North, Hook. Wetherspoon. (SW161, U134)

**SURBITON, CORONATION HALL**, St Marks Hill. Wetherspoon. (U129)  
**SURBITON, NEW PRINCE**®, 117 Ewell Rd. Gale. (SW161, U162)  
**SUTTON, COCK & BULL**, 26-30 High St. Fuller. (SW164)  
**SUTTON, LITTLE WINDSOR**®, 13 Greyhound Rd. Fuller; formerly WINDSOR CASTLE. (SW167, U153)  
**SUTTON, MOON ON THE HILL**, 5-9 Hill Rd. Wetherspoon. (SW167)  
**SUTTON, NIGHTINGALE**, 53 Carshalton Rd. Punch Taverns (ex-Allied); formerly JENNY LIND. (SW166, U153)  
**WALLINGTON, WHISPERING MOON**, 25 Ross Parade. Wetherspoon. (SW126, U159)

## WEST

**W2, ARCHERY TAVERN**®, 4 Bathurst St. Hall & Woodhouse. (W58, U67, U85)  
**W2, LEINSTER**, 57 Ossington St. Six Continents. (W62, U55)  
**W2, MAD BISHOP & BEAR**®, 1st Floor, Paddington Main Line Stn concourse. Fuller. (U153)  
**W2, MONKEY PUZZLE**, 30 Southwick St. Hall & Woodhouse. (W62, U67, U101, U163)  
**W2, PRINCE EDWARD**, 73 Princes Sq. Hall & Woodhouse (W62, U93, U131)  
**W2, TYBURN**, 18-20 Edgware Rd. Wetherspoon. (U154)  
**W2, VICTORIA**®, 10A Strathearn Place. Fuller. (W64, U67, U87)  
**W3, CASTLE**, 140 Victoria Rd. Fuller. (W64)  
**W3, RED LION & PINEAPPLE**, 281 High St. Wetherspoon. (W65, U89)  
**W4, GEORGE & DEVONSHIRE**®, 8 Burlington La. Fuller. (W69, U92)  
**W4, GEORGE IV**, 185 Chiswick High Rd. Fuller. (W69, U53, U99, U101, U108)  
**W4, OLD PACK HORSE**®, 434 Chiswick High Rd. Fuller. (W69)  
**W5, CASTLE**®, 36 St Marys Rd. Fuller. (W72, U46, U92)  
**W5, FOX & GOOSE**, Hanger La. Fuller. (W72, U78, U92)  
**W5, PLOUGH INN**, 297 Northfield Ave. Fuller. (W73)  
**W5, RED LION**®, 13 St Marys Rd. Fuller. (W73, U166)  
**W5, ROSE & CROWN**, Church Pl, St Marys Rd. Fuller. (W73, U92)  
**W5, TJ DUFFYS**, 282 Northfield Ave. Free House, formerly CAPTAIN WOODKUS. (U57, U110, U170)  
**W5, WHEATSHEAF**®, 41 Haven La. Fuller. (W73, U63, U92)  
**W6, ANDOVER ARMS**®, 57 Aldensley Rd. Fuller. (W74, U67)  
**W6, CRABTREE**, 4 Rainville Rd. Scottish & Newcastle. (W74, U80, U107)  
**W6, CROSS KEYS**®, 57 Black Lion La. Fuller. (W74, U92)  
**W6, DOVE**®, 19 Upper Mall. Fuller. (W74, U92)  
**W6, PLOUGH & HARROW**, 120-124 King St. Wetherspoon (U168)  
**W6, RUTLAND**, 15 Lower Mall. Scottish & Newcastle. (W77, U107)  
**W6, SALUTATION**®, 154 King St. Fuller. (W77, U72, U92, U101)  
**W6, WILLIAM MORRIS**, 2/4 King St. Wetherspoon. (U131)  
**W8, BUILDERS ARMS**, 1 Kensington Court Place. Six Continents. (W79, U74, U94)  
**W8, CHURCHILL ARMS**®, 119 Kensington Church St. Fuller. (W79, U92)  
**W8, DEVONSHIRE ARMS**, 37 Marloes Rd. Six Continents. (W82, U49, U72, U94, U105)  
**W8, ELEPHANT & CASTLE**, 40 Holland St. Six Continents. (W82, U70, U94)  
**W8, GOAT TAVERN**, 3A Kensington High St. Scottish & Newcastle (W82, U56, U94, U107, U170)  
**W11, PRINCE ALBERT**, 11 Pembridge Rd. Six Continents. (W90, U75, U151)  
**W11, SUN IN SPLENDOR**, 7 Portobello Rd. Six Continents. (W90, U66, U147, U168)  
**W12, BUSHRANGER**, 55 Goldhawk Rd. Free House. (W91, U82)  
**W12, CENTRAL BAR**, 1st Floor, West 12 Shopping & Leisure Centre, Shepherds Bush Green. Wetherspoon. (U169)  
**W12, GOLDBHAWK**, 122 Goldhawk Rd. Six Continents. (W91, U151)  
**W13, DRAYTON COURT**, 2 The Avenue. Fuller. (W92)  
**W14, HAND & FLOWER**, 1 Hammersmith Rd. Wizard Inns. (W94, U58, U71, U76, U95, U153, U167)  
**W14, WARWICK ARMS**, 160 Warwick Rd. Fuller. (W95, U71)





# CASK MARQUE AWARDS

FELTHAM, MOON ON THE SQUARE, 30 The centre, High st.

Wetherspoon, formerly CRICKETERS (W100, U89, U102)

GREENFORD, BLACK HORSE<sup>ib</sup>, 425 Oldfield Rd. Fuller.

(W102, U78)

HAMPTON COURT, KINGS ARMS, Lion Gate, Hampton Court

Rd. Hall & Woodhouse. (W104, U66, U70, U94)

HAMPTON WICK, STRYKER'S RAILWAY, 91 High St.

Unique, formerly RAILWAY TAVERN. (W106, U141, U153, U160)

HAMPTON WICK, WHITE HART HOTEL, 1 High St.

Fuller. (W106, U99, U160)

HARLINGTON, WHITE HART, 158 High St. Fuller.

(W111)

HAYES, BOTWELL INN<sup>o</sup>, 23-29 Coldharbour La.

Wetherspoon. (U155)

HEATHROW, WETHERSPOONS, Terminal 2 (Airside).

Wetherspoon. (U158)

HEATHROW, WETHERSPOONS, Terminal 2 Landside.

Wetherspoon. (U167)

HEATHROW, WETHERSPOONS, Terminal 4 (Airside).

Wetherspoon, formerly JJ MOONS. (U76, U78, U158)

HEATHROW, WETHERSPOONS, Terminal 4 (Landside).

Wetherspoon. (U79)

HOUNSLOW, CROSS LANCES<sup>o</sup>, 236 Hanworth Rd. Fuller.

(W126)

HOUNSLOW, SHANNONS, 32/34 High St. Fuller, formerly D

SHANNON & SONS and CHARLOT. (W126, U44, U131, U170)

HOUNSLOW, MOON UNDER WATER<sup>o</sup>, 84/86 Staines Rd.

Wetherspoon. (U62, U92, U99, U152)

ICKENHAM, TICHENHAM INN<sup>o</sup>, 11 Swakeleys Rd.

Wetherspoon. (U150, U163)

ISLEWORTH, COUNTY ARMS, 2 Hall Rd. Wizard Inns.

(W130, U86, U140)

ISLEWORTH, RISING SUN, 407 London Rd. Fuller. (W131)

OSTERLEY, HARE & HOUNDS, Wyke Green, Windmill La.

Fuller. (W131)

RUISLIP, JJ MOONS<sup>o</sup>, 12 Victoria Rd, Ruislip Manor.

Wetherspoon. (U59, U86)

TEDDINGTON, HOGARTH, 58 Broad St. Fuller. (W146, U92)

TEDDINGTON, LION<sup>o</sup>, 27 Wick Rd. Unique. (W147, U91, U153)

TWICKENHAM, CABBAGE PATCH, 67 London Rd.

Intrepeneur. (W150, U71, U159)

TWICKENHAM, EEL PIE<sup>o</sup>, 9/11 Church St. Hall &

Woodhouse. (W150, U71, U99, U120)

TWICKENHAM, HOOK, LINE & SINKER, 29/31 York

St. Fuller. (U162)

TWICKENHAM, MOON UNDER WATER, 53-57

London Rd. Wetherspoon. (U68)

TWICKENHAM, PRINCE ALBERT, 30 Hampton Rd.

Fuller. (W151)

TWICKENHAM, PRINCE BLUCHER, 124 The Green.

Fuller. (W151)

TWICKENHAM, TURK'S HEAD, 28 Winchester Rd.

Fuller. (W151)

UXBRIDGE, GOOD YARN, 132 High St. Wetherspoon. (U99)

WHITTON, ADMIRAL NELSON, 123 Nelson Rd. Fuller.

(W162)



## CLUBS

SW1(W), BELLAMY'S BAR, House of Commons, 1 Parliament Sq.

SW1(W), STRANGERS BAR, House of Commons, 1 Parliament

Sq.

W5, OLD ACTONIANS SPORTS CLUB, Gunnersbury Dr.

W5, QUESTORS GRAPEVINE CLUB, 12 Mattock La

RUISLIP, RUISLIP CONSERVATIVE CLUB, 56-58 Ickenham

Rd.

# STATION ARMS

39 Station Road, Southminster, Essex. Tel: (01621) 772225

## BEER FESTIVAL

FRI 23rd MAY THRU TO MON 26th MAY

Fri: 5.30-11.00pm; Sat: Noon-11.00pm; Sun Noon-10.30pm;

Mon Noon-11.00pm

## 30 Real Ales

4 Traditional Ciders & Perries

• BBQ • Live Entertainment

- only 200 yards from Southminster railway station



The aim of 'Capital Pubcheck' is to share information about the latest happenings on the London pub scene including new pub and bar openings, name changes, acquisitions, closures, notable changes to beer ranges etc.

Information is gathered from a variety of sources including London Drinker readers, individual CAMRA members and branch contacts, breweries, pub operators, landlords etc. If you would like to contribute to 'Pubcheck' please send your news to the address below.

This time we report the opening of a new Wetherspoon Free House in E8 Hackney, catch up on one opened last year in SE10 Greenwich and record the latest Lloyds No 1 Bar in Twickenham. We also report the closure of a Wetherspoon pub in N4 Harringay and a renaming in Bromley. The small 'Remarkable Restaurants' pub chain has carried out a splendid refurbishment (including the addition of Ridley beers) to a listed pub, also in N4 Harringay. Real ale features in new and reopened independently owned pubs in E14 Docklands and SW4 Clapham Park. The expanding Puzzle Pub Co has acquired several pubs from the defunct Old Monk chain and one from Yates's. Renamings will take place upon

refurbishments in house style. Real ales are available but only from national or regional brewers. Hall & Woodhouse, which has a good record of sympathetic refurbishments to its London pubs, have inexplicably and inappropriately renamed a listed pub in EC4 Farringdon. Young's have disposed of a pub in Mitcham.

Cross references to CAMRA's various pub guides covering Greater London are provided to enable easy updating. The numbers in brackets after each entry refer to the page numbers in the following guides: E - East London & City Beer Guide, 3rd edition; H - Hertfordshire Guide to Real Ale, 2000 edition; K - Guide to Kent Pubs, 10th edition; 8K - Real Ale Guide to Kent Pubs, 8th edition; N - North London Beer Guide, 3rd edition; SE - South East London Pub Guide, 4th edition; 3SE - South East London Pub Guide, 3rd edition; SW - South West London Pub Guide, 2nd edition; W - Real Beer in West London; X - Essex Beer Guide, 9th edition.

If you would like to report changes to pubs or beers, please write to: Capital Pubcheck, 2 Sandtoft Road, London SE7 7LR or e-mail: capitalpubcheck@hotmail.com.

## NEW & REOPENED PUBS & PUBS CONVERTED TO REAL ALE

### EAST

**E1, O2 BRASSERIE (BAR)**, 51 Bethnal Green Rd. No real ale. New Free House/bar and restaurant on ground floor of new mixed commercial/residential development.

**E2, FLORIST**, 255 Globe Rd. Now **FLORIST BAR** according to blackboard outside but no external signage. Fuller: London Pride (reinstatement). Probably now a Free House, ex-Phoenix. (E80, U70, U75, U112, U158)

**E8, BAXTERS COURT**, 282-284 Mare St. Courage: Best Bitter, Directors Bitter; Greene King: Abbot Ale; Hop Back: Summer Lightning; Shepherd Neame: Spitfire; Theakston: Best Bitter; 3 guest beers. New built red brick Wetherspoons Free House occupying vacant infill site, opened in late February. Entry is through a quarry tiled courtyard open to the elements, with patio seating. The ground floor bar has dark wooden wall panelling with red decor above and a yellow painted ceiling and yellow lighting. Family/no smoking area to left with high backed seating booths, and local history panels above. The pub's name, 'a lost alley approximately on the site', is displayed on an illuminated screen behind the bar with variable colours. Abstract paintings include an

image of Bob Marley, apparently commemorating a mural formerly visible on the flank wall of the building next door. Wooden stairs lead up to first floor bar decorated in similar style leading through to an open air patio (with heaters and potted plants), on a balcony overlooking the quiet street at the rear. Food, disabled WC. Open 10am for breakfast Mon-Sat and all permitted hours.

**E14, HARRYS BAR**, 21 Pepper St, Crossharbour. Renamed **PUZZLE E14**. Courage: Best Bitter; Fuller: London Pride. New two storey detached brick built pub with unusual green coloured pitched roof overlooking Millwall Inner Dock. An independent Free House opened about 10 years ago but not previously reported, and later acquired by the Old Monk Pub Co from which it has recently been acquired by the Puzzle Pub Co. Fitted out in typical Puzzle style with pine furniture and polished pine flooring, mauve and cream decor and abstract paintings. Large French windows look out on dock. Restaurant and pool tables upstairs. Food, TV for sport, piped music. Open all permitted hours (including weekends).

**E14, WATERFRONT**, 187 South Quay Plaza, Marsh Wall. Tetley: Bitter; Young: Special. Former Fullers pub closed following bomb damage in 1996, now reopened as a Free House/bar and restaurant. Mauve painted walls and carpet. Mixture of pine and steel furniture. Traditional English food, TV.

# CAPITAL PUBCHECK - UPDATE 170

Open 12-11 Mon-Fri, closed weekends. 'Majingo's' lap dancing club upstairs. Note correct address. (E149, U119)

**E16, DURHAM ARMS**, 24 Stephenson St. Greene King: IPA (reinstatement). E159, U167

## NORTH

**N2, GERTIE BROWNES**, 95 High Rd. No real ale. Irish Free House/bar in former restaurant premises.

**N7, SWAGMANS REST**, 596 Holloway Rd. Reopened and renamed **NAMBUCCA**. No real ale. Now a 'bar, kitchen and grill'. Formerly BJ'S (SPORTS BAR & GRILL), originally COCK TAVERN. (N86, U120, U130, U164, U165, U168)

**N12, YATES'S WINE LODGE**, 698-702 High Rd. Renamed **PUZZLE** and acquired from Yates's by the growing Puzzle Pub Co chain, with the welcome reintroduction of real ale. Courage: Best Bitter, Directors Bitter; Fuller: London Pride. (U144, U154)

**EAST BARNET (EN4), KINGS HEAD**. Shepherd Neame: Spitfire. Reopened. Now presumably a Free House, ex-Taylor Walker. (N247, H46, U165)

## SOUTH EAST

**SE1, BRIDGE BAR**, London Bridge Main Line

Station Concourse. No real ale. Free House/bar opened November 2002 in former Garfunkels restaurant premises.

**SE10, GATE CLOCK**, Creek Rd (next to Cutty Sark DLR Station). Courage: Best Bitter, Directors Bitter; Greene King: Abbot Ale; Hop Back: Summer Lightning; Shepherd Neame: Spitfire, 3 guest beers. New Wetherspoon Free House opened late July 2002 but not previously reported owing to an administrative error (apologies from the compilers!). Part of brand new mixed commercial and residential development surrounding Cutty Sark DLR Station. Large open plan ground floor bar decorated vaguely in 'ocean liner saloon' style with wood panelled columns, mauve and mustard painted walls, white ceiling, purple covered furniture and carpets. Raised seating area to one side along front and family/no smoking area on the other. Large windows overlook long, narrow, partially covered outdoor drinking area along busy Creek Rd frontage. Inadequately narrow staircase (and lift for disabled) leads to similarly furnished upstairs bar (partly no smoking). Abstract paintings and panels chronicling historic Greenwich adorn the walls. The pub is named after the galvanometric clock (with a 24 hr face) dating from 1851, located at the gate to the Royal Observatory in Greenwich Park. Food, disabled WC. Open 10am for breakfast Mon-Sat and all permitted hours.

## APPLICATION TO JOIN CAMRA

I/We wish to become members of the Campaign for Real Ale Limited and agree to abide by the Memorandum and Articles of Association of the Campaign.

Name(s) \_\_\_\_\_

Address \_\_\_\_\_

Postcode \_\_\_\_\_

Signature \_\_\_\_\_ Date \_\_\_\_\_

I/We enclose the remittance for individual/joint membership.

	Individual Annual	Joint Annual	Individual Life	Joint Life
UK and EEC	£16 <input type="checkbox"/>	£19 <input type="checkbox"/>	£192 <input type="checkbox"/>	£228 <input type="checkbox"/>
Rest of the World	£20 <input type="checkbox"/>	£23 <input type="checkbox"/>	£240 <input type="checkbox"/>	£276 <input type="checkbox"/>
Under age 26	£9 <input type="checkbox"/>	Date of birth _____		
Unemployed/Disabled	£9 <input type="checkbox"/>			
OAP	£9 <input type="checkbox"/>	£12 <input type="checkbox"/>	£108 <input type="checkbox"/>	£144 <input type="checkbox"/>

Send your remittance (payable to CAMRA Ltd) to:  
Membership Secretary, CAMRA Ltd, 230 Hatfield Road, St Albans, Herts AL1 4LW



## SOUTH WEST

**SW1 (W), BONAPARTE**, Victoria Main Line Station Concourse. No real ale. Free House/bar/café in contemporary open plan style, near Platforms 15-19.

**SW4, ABBEVILLE**, 67/69 Abbeville Rd. Taylor: Landlord. New Free House opened some time ago in former wine bar/restaurant premises but not previously reported. Acquired and renovated by current owners in late 2002. Large wood framed windows on frontage. The interior comprises a series of interconnecting rooms with two bars at varying levels. It has a homely feel complete with gas flame fires, sofas, rustic furniture wood panelling, cream décor and carpets and ceiling fans. Framed prints on walls. Open all permitted hours (10am for breakfast weekends).

**SW4, BAR LOCAL**, 4 Clapham Common South Side. No real ale. Small Free House/bar in former restaurant premises.

**SW6, BIJU**, 555 Kings Rd. Reopened and reverted to **SHOELESS JOE'S**. Still no real ale. (U157, U163, U167)

## WEST

**TWICKENHAM, SORTING ROOM**, 24 London Rd. Courage: Directors Bitter; Fuller: London Pride; 3 guest beers. Latest Wetherspoon 'Lloyds No 1 Bar' opened mid February in listed, stone fronted, former post office and sorting office building. Large bar decorated in modern style with wood panelled and red painted walls, abstract paintings, yellow lighting, patterned carpet and a mixture of stools and high round tables, sofas and chairs and tables. Blue neon strip lighting above long bar. Family/no smoking area at rear, complete with potted plants. Plasma screens play music videos but thankfully do not dominate, and the 'music' was not unacceptably intrusive on survey visit (certainly no worse than the average London pub). The first pint was presented to veteran CAMRA member Geoff Harper (88), a retired postal worker who started as a telegraph boy in this very building. Food, disabled WC. Open 10am for breakfast Mon-Sat and all permitted hours. Both this and the recent Fulham 'Lloyds' (reported in U168) appear to keep noise levels under control and offer a more adventurous range of guest beers than

# HOOP BEER FESTIVAL

The Hoop, High Street, Stock,  
Essex CM4 9BD

*Wednesday 29th May -  
Tuesday 4th June*

150 Real Ales and draught ciders from  
England, Scotland & Wales

### Opening times:

Weekdays & Saturday 11am - 11pm

Sunday 12noon - 10.30pm

*Food available during serving hours*

**Tel 01277 841137 for details**

## THE ROYAL OAK



44 TABARD STREET, LONDON SE1  
Tel - 0207 357 7173

Traditional Harvey's Sussex Ales,  
Served in a Traditional Atmosphere

Open Mon-Fri 11am-11pm

Food Available  
Lunchtime & Evenings

Nearest tube - The Borough

# CAPITAL PUBCHECK - UPDATE 170

earlier openings - which is welcomed. Could Mr Martin have taken some account of our earlier comments on Lloyds pubs?

## PUBS CLOSED OR CEASED SELLING REAL ALE

### CENTRAL

**EC1, LORD NELSON**, 17 Mora St, ex-Watney, now converted to flats named Lord Nelson Court. (E20, U167)

**WC1, QUEENS HEAD**, 22 Easton St. Renamed **EASTON**, ex-Watney, H removed. (W50, N29)

### EAST

**E1, SHIP**, ex-Taylor Walker, closed. (E73)

**E2, EARL GREY**, Mayfair Taverns, no real ale. (E80, U95, U98, U156, U159)

**E2, ROYAL CRICKETERS** ex-Whitbread. Confirmed converted to flats. (E84, U158, U168)

**BARKING, FISHING SMACK**, ex-Allied, closed for housing development. (X11, U165, U166)

### NORTH

**N2, RED LION**, ex-Taylor Walker, closed and boarded up. (N67)

**N4, OLD SUFFOLK PUNCH**, Wetherspoon, closed, sold to a property company and unlikely to reopen as a pub. One of Wetherspoon's earliest pubs, opened in late 1983 and first reported in Update 5! It is believed to be the first to be sold to a non-pub operator, much to the consternation of loyal locals who viewed it as something of an oasis. The availability of alternative Wetherspoon pubs in Turnpike Lane and Wood Green is of little consolation. Greedy pubcos and breweries are conspiring with property developers to close valuable community pubs and convert them for more lucrative uses all across London, the scale of which was recently highlighted in *London Drinker* and *What's Brewing*. Somehow we expected better of Wetherspoons, which makes great play of its wider community commitment. We hope this does not set a precedent for other disposals.

**N11, GROVE INN** reverted to **TURRETS**, ex-Courage, closed. Formerly **KITES CAFE BAR AT THE TURRETS**. (N107, U109, U110, U159)

**N12, OLIVERS II**. Renamed **TOOLANS**, Free House. Now an Irish bar, H removed. (N111)

**BARNET (EN5), BUENA VISTA**. Renamed **XCALIBAR**, Camelot Inns. No real ale. Formerly **BAR TEN** and **JUG & TRUMPET**. (N250, U157, H19, U164, U166)

**ENFIELD (EN1), SOUTHBURY**, ex-Taylor Walker. No real ale. (N230, U168)

### NORTH WEST

**EDGWARE (HA8), LEATHER BOTTLE**, ex-Whitbread, closed. Planning permission granted for flats. (N256, U153)

### SOUTH EAST

**SE11, DURHAM ARMS**, ex-Courage, closed and boarded up. (SE106)

**SE13, SULTAN**, ex-Inntrepreneur, now demolished. (SE122, U164)

**SE18, BAG O'NAILS**, Phoenix, confirmed converted to flats. (SE165, U112, U168)

**SE18, DUKE OF CAMBRIDGE**, Phoenix, now demolished. (SE167, U112, U156, U157)

### SOUTH WEST

**SW4, ANGELL ARMS**, ex-Inntrepreneur, closed, future uncertain. (SW59)

**SW11, PINE TAVERN**, ex-Inntrepreneur, closed and boarded up. (SW89)

**SW11 SPIKEY HEDGEHOG**, ex-Inntrepreneur, now demolished and to be replaced by 'luxury flats'. Formerly **QUEEN VICTORIA**. (SW89, U125, U144, U161)

**SW19, CHUMLEYS**. Renamed **WALKABOUT**, Regent Inns, H removed. Now an Australian theme pub. (SW116)

**SW19, ROYAL SIX BELLS**, ex-Allied, closed and boarded up. (SW119, U142)

**MITCHAM, BULL**, Young, sold, closed and boarded up, future uncertain. (SW145)

### WEST

**HAMPTON, WHITE HART**, Free House, closed. Planning permission granted by Richmond Council for conversion to flats despite objections from CAMRA and locals. The sad loss of one of London's rare independent free houses. (W103, U92)

## OTHER CHANGES TO PUBS & BEER RANGES

### CENTRAL

**EC2, OLD MONK**, 128-148 Bishopsgate (entrance in Houndsditch EC3). -beers listed except Courage: Directors Bitter; +Courage: Best Bitter; +Wells: Bombardier. Acquired from Gerry Martin's defunct Old Monk Pub Co by the expanding Puzzle Pub Co chain. Note full address. (U102)

**EC4, BLACK FRIAR**, -beers listed except Adnams: Bitter; +Fuller: London Pride; +Greene King: IPA. Six Continents, former Allied



(Nicholson) pub shortly due to be rebranded 'Mitchell & Butlers' as part of demerger proposals. (E146, U151)

**EC4, HOOP & GRAPES.** Renamed **MASH TUN.** -Badger: King & Barnes Sussex Bitter; +Badger: Best Bitter. Inexplicable removal of historic name from 'listed' pub by Hall & Woodhouse. Was **SAMUELS** for a while before its historic name was restored by Hall & Woodhouse on acquisition in 2000. (E49, U69, U140, U164)

**EC4, MAHONEYS.** Reverted to original name **KING & KEYS** and rebranded as a 'Nicholson' pub. Formerly **SCRUFFY MURPHYS** for a while. Still no real ale. (E50, U102, U151, U164)

**EC4 LEARNED MONK.** Acquired by Puzzle Pub Co from defunct Old Monk chain. Note full address. (U108)

**W1(May), OLD MONK.** Acquired by Puzzle Pub Co from Old Monk chain. Formerly **GILLRAYS.** (W39, U90, U93, U102, U131, U133)

**WC1, McGARVEYS.** Renamed **McGLYNNS.** -beers listed; +Courage: Best Bitter. Now a Free House, ex-Bass. Formerly **DUKE OF WELLINGTON.** (W46, U53, U107, N24)

**WC1, MUSEUM TAVERN.** Now badged as part of S&N's 'T&J Bernard' estate. (W47, U84, U95, U106, N25)

**WC1, OLD MONK, 39-41 Grays Inn Rd.** Acquired by Puzzle Pub Co from Old Monk chain. Note full address. (U102)

**WC2, SHOELESS JOE'S.** Renamed **WALKABOUT.** Acquired by Regent Inns and now a loud Australian theme pub, still no real ale. (U156)

---

## EAST

**E1, OLD MONK, 32 Leman St.** Acquired by Puzzle Pub Co from Old Monk chain. (U131)

**E1, OLD MONK, 94-98 Middlesex St.** Renamed **PUZZLE E1.** -beers listed; +Courage: Best Bitter, Directors Bitter; +Fuller: London Pride. Acquired by Puzzle Pub Co from Old Monk chain. (U153)

**E1, OLD MONK, Thomas More Sq, Nesham St.** Renamed **THOMAS MORE.** -beers listed; +Fuller: London Pride; +Greene King: IPA. Acquired by Barracuda pub chain from Old Monk chain. (E130)

---

## NORTH

**N1, CANONBURY TAVERN.** Now simply **CANONBURY** although 'Tavern' remains on hanging sign. (N39)

**N4, SALISBURY.** -John Smith: Bitter; +Fuller: London Pride; +Ridley: IPA, Prospect, Old Bob.

Splendid late Victorian Grade II listed pub totally refurbished and brought back to its former glory. Now run by the Remarkable Restaurants chain, ex-Bass. Ornate wrought iron entrance leads into a large bar area with decorative plasterwork and ceilings, carved woodwork, mosaic tiled floors, carved busts and stuffed birds above the bar. Beer and food menu on blackboards. Separate restaurant in room at rear. Also sells keg dispensed Czech lagers from small Litoval and Zuba breweries. Food. Open 12-late Mon-Sat (licensed until 2am but may close earlier, particularly Mon-Wed), 12-10.30 Sun. (N77)

**N7, BEER HOUSE.** Renamed **TANK,** -beers listed: +Fuller: London Pride; +Shepherd Neame: Spitfire. Garishly painted and now run by the small 'Urban Bar' chain, ex-Punch, which has inflicted similar treatment on other pubs in the chain including the London Hospital Tavern (LHT), E1 and Five Bells & Bladebone (5B) in E14. Formerly **FLOUNDER & FIRKIN** and originally **HIGHBURY BREWERY TAP.** (N87, U153, U154)

**BARNET (EN5), RAILWAY TAVERN,** -beers listed; +Wells: Bombardier. (N252, H84)

---

## SOUTH EAST

**SE1, COOPERS,** +Fuller: Chiswick Bitter, ESB; +Greene King: IPA; +Hancock: HB; +Worthington: 1744. Now run by 'Select Service Partner', ex-Travellers Fayre. Beware overpriced 'halves'. (U102, U160)

**BROMLEY, WETHERSPOONS.** Renamed **RICHMAL CROMPTON** after the authoress of the just William stories. The new name was chosen following suggestions from customers. The authoress lived locally and taught classics at Bromley High School for Girls between 1917 and 1924. A plaque at the front of the pub commemorates the renaming and a proper pub sign will be installed later this year following rehabilitation. (U149)

---

## SOUTH WEST

**SW5, BRAM STOKERS TAVERN.** Reverted to **DUKE OF CLARENCE,** -Courage: Directors Bitter; +Adams: Bitter. Removal of short lived 'Eerie Pub Co' theme junk has resulted in a smart conversion with cream decor, bright colours, comfortable seating and separate drinking areas. (SW62, U144)

**SW11, PORTER BLACK'S BAR.** Reverted to original name, **UNITY.** Formerly **WALSH'S.** (SW90, U151, U160)

**SW12, PRINCE OF WALES,** -beers listed; +Wells: Bombardier. (SW93)

## CAPITAL PUBCHECK - UPDATE 170

**SW14, JOLLY MILKMAN.** Renamed  
**TAPESTRY BAR.** (SW98)

**SW18, EARL OF SPENCER.** -Young: Bitter;  
+Courage: Directors Bitter; +Fuller: London Pride;  
+Hook Norton: Best Bitter. Now a 'gastropub'.  
Formerly BOF'S and MERTON INN. (SW113,  
U142, U150, U153)

### WEST

**W8, GOAT.** Now **GOAT TAVERN.** -beers listed  
except Courage: Directors Bitter; +Courage: Best  
Bitter; +Greene King: IPA. Badged by S&N as a  
'Simonds' pub, reviving the former brewery name.  
(W82, U56, U94, U107)

**W13, TJ DUFFYS,** 282 Northfield Ave. Is located  
in **W5.** Correct previous references in Updates.  
Formerly **CAPTAIN WOODUCKS.** (U57, U110)

**HOUNSLOW, D SHANNON & SONS.**  
Renamed **SHANNONS.** Formerly **CHARIOT.**  
(W126, U44, U131, U168)

**TWICKENHAM, CHERRY TREE.** Renamed  
**RED & PEPPER.** (W150, U47, U98, U158)

### CORRECTIONS TO UPDATE 165

#### NEW PUBS ETC.

**NW1, LLOYDS NO 1 BAR (ICE WHARF).**  
Although both names are displayed outside, the  
pub's proper name appears to be **ICE WHARF**  
with 'Lloyds No 1 Bar' merely indicating that it is  
part of the Wetherspoon owned chain. Alter pub's

name to read solely **ICE WHARF** and refer to  
Lloyds No 1 under description.

### CORRECTIONS TO UPDATE 167

#### NEW PUBS ETC.

**N1, LLOYDS NO 1 BAR (GLASS WORKS).**  
See previous correction. Alter pub's name to read  
solely **GLASS WORKS.**

### CORRECTIONS TO UPDATE 168

#### NEW PUBS ETC.

**SW6, LLOYDS NO 1 BAR (OYSTER ROOMS).**  
See previous corrections. Alter pub's name to read  
solely **OYSTER ROOMS.**

**SW8, CANTON ARMS.** Should read: Reopened  
(followed by list of current beers)..

#### OTHER CHANGES ETC.

**SE11, COCK.** Add: Formerly **COCK TAVERN.**  
**MORDEN, JACK STAMPS BEER HOUSE.**  
Add: Formerly **END OF THE LINE.**

### CORRECTIONS TO UPDATE 169

#### NEW PUBS ETC.

**E15, FOX & STRATFORD** Should read **FOX @  
STRATFORD**

#### OTHER CHANGES ETC.

**E2 OLD AXE.** Should read **OLD AXE (YE).**  
**NW1, PEMBROKE.** Add: Formerly  
**PEMBROKE CASTLE.**

## LAGRAD LONDON GROUP

LAGRAD (Lesbian and Gay Real Ale Drinkers) is a group of CAMRA members extending the Campaign to the lesbian and gay scene. All are welcome to all events. Contact the group convenor on [LAGRAD@ukgateway.net](mailto:LAGRAD@ukgateway.net) or visit the LAGRAD website, [www.goldings.demon.co.uk/queerale/](http://www.goldings.demon.co.uk/queerale/)

**April - Wed 2 (7pm)** Monthly social. King's Arms (upstairs bar), 23 Poland St, W1 (020-7734 5907). -  
**Tue 15** Greenwich SE10 crawl: (6.30) Ye Olde Rose and Crown, 1 Crooms Hill, (020-8858 0154),  
traditional pub; (8pm) Gloucester, 1 King William Walk, Greenwich, (020-8858 2666), ale seems to be back  
on.

**May - Wed 7 (7pm)** Monthly social. King's Arms (upstairs bar), 23 Poland St, W1. - **Tue 20** Islington crawl:  
(6pm) Duke of Wellington, 119 Balls Pond Rd, N1 (020-7254 4338); (7.30) Ram Bar, 39 Queens Head St,  
N1. (020-7354 0576).

Advertise in next month's **LONDON  
DRINKER** from only £45  
(quarter page - all inclusive)  
Call Peter Tonge now on 020 8300 7693

# HUGE CASH REWARD

Missing from the “**Pakenham Arms**”

Nº1 Pakenham Street, London WC1

Hundreds of gallons of real ales from the following breweries:-  
Fullers, Young, Slaters and Adnams.

---

All beers were of the very best quality - there seems no doubt that the parties who had partaken of these ales are well satisfied, as they would have returned (or at least complained) about them.

---

The Breweries have kindly replaced these missing ales so that they can be enjoyed by all her majesty's law abiding subjects, and any others who would like to imbibe in these fine ales during the months of April & May.

---

## As from April...

- ◆ Adnams Oyster, Broadside & Best Bitter
- ◆ Hydes Jekyll's Gold
- ◆ Greene King Abbot,
- Morlands Speckled Hen & Original

***Your Host - Pat Mulligan***

(otherwise known as ‘**The Guvnor**’!)

**020 7837 6933**



# A MARATHON CRAWL

On 13 April, about 45,000 people will, for reasons best known to themselves (although I hear some may do it for charity), run 26 and a fifth miles from South East London to The Mall via Docklands. A long way round you might say, and maybe 'run' is too fast a word for most, but I suspect they'll all do it a darned sight quicker than I could. That's why I'm not trying. I'm sticking to the time honoured tradition of crawling, with, of course, a few stops on the way.

You might be forgiven for thinking that this is hardly in the spirit of the event, but I say if you want some spirit, it often complements a good beer so go ahead. And, bad puns aside, you can still cheer on the insane bipeds as you go (not to mention maybe put a few beer tokens in the pot for Shelter, the Marathon's charity this year).

So where to start. Well, first off, about 50 pubs along the route are due to be decked out for the day in bunting and streamers, so you shouldn't miss those next to the runners. But I'll mention one or two close by the route that you may miss otherwise. After all, you don't want to have to go south of the river too often so you may as well get in the better pubs as you go.

Although the professional race starts at 9 am, there are so many to get over the line that this should still be going on by the time the pubs open. The most convenient place to start from is Blackheath station, just a short walk from our first pub, Zero Degrees on Montpelier Vale. This pub has its own micro brewery, specialising in continental style beers. Although you can't see the race from here, it is a useful gathering place with something refreshingly unusual to drink.

From here it's a short walk to Montpelier Row and the Princess of Wales where the usual beer is Fullers Pride. Here you can look out onto Blackheath itself, and as the heath is often used as an impromptu beer garden anyway, you won't be alone watching the action.

The race moves East to Charlton, where two pubs stand out as worth a visit. First the Bugle Horn, at 6 The Village, on the route of the marathon. This pub has a restaurant and welcomes children. Both this and the White Swan down the road at 22 The Village, are very much locals pubs.

The first detour from the route comes here. As the runners come up to Woolwich along John Wilson Street, they turn left to follow the river towards central London. If you take a right instead, you'll come to Hare Street on your right. At number 49 is by far the best pub in the area, the Prince Albert, which is universally known as Rose's. The pub used to be owned by GJ Rose & Co, whose signage is still on show in the pub, and the locals have always

known it by that name as a result. The beer range varies, with at least three beers available at any time, and occasionally a real cider as well. The filled rolls may be necessary by the time you get here as well! Also look for the Kent dart board. The pub has been in CAMRA's good beer guide every year since 1994.

Join the runners for a couple of miles from here, or for the more sedate of us, take the train London bound for a couple of stops to Greenwich. The marathon route heads around the Cutty Sark, one of the TV cameramen's favourite spots in the race. Close by, on College Approach, is the Admiral Hardy. This old pub has recently been refurbished and is also known for the excellent food, notably seafood, and a specialist shop, selling, among other things, fish and cheeses. The beer range is varied, but there is often something from the Flagship brewery. For those who may wish to skip a few pubs, the docklands is easily reached from the nearby Cutty Sark DLR station.

Another pub which takes you away from the race route is the Ashburnham Arms, on Ashburnham Grove. Close to Greenwich station, (DLR and overground), this Shepherd Neame pub is a long standing Good Beer Guide entry and was once a London Pub of the Year. Bar billiards is available and local artists have provided the pictures of Greenwich which adorn the walls. Just over the road, you will also find the Greenwich Union (on Royal Hill). This is a Meantime brewery pub and serves their Blonde, which is actually brewed by Roosters! You will also find the brewery's beers served under pressure, but worth a try if you don't know them.

A short walk or an even shorter hop on the overground to Deptford, the race hits the 8 mile point along Evelyn Street. Turn right into Prince Street for the Dog and Bell. A lovely local pub which is often missed because of its back street location, this free house serves Fullers and regularly changing guest ales along with a good range of whiskies. This is a very friendly pub, and also has a selection of traditional pub games.

The marathon follows the main route parallel to the Thames at this stage, from Evelyn Street into Salter Road, but closer to the river is Rotherhithe Street. Here you will find the Mayflower, named after the ship which is said to have put in here on its way to the new world. The Greene King beers can be enjoyed with the fine views over the river, and the sharp sighted may even spot the runners on the other side, several miles ahead. A recent change of landlord has not changed the good quality of this historic pub.

Take the Jubilee line from Canada Water to Tower Bridge for the last pubs before we cross the river, the

# Welcome to... **THE TWO CLARETS!!!**

## **THE CLARET FREE HOUSE**

5 Bingham Corner, Lower Addiscombe Rd.  
Croydon CR0 7AA Tel: 020 8656 7452

### **Croydon & Sutton CAMRA's 'Croydon Pub of the Year'**

- ◆ Over 20 Real Ales every month (from micro & indie family brewers)
- ◆ The only London pub serving Palmers Ales
- ◆ Family owned for 20 years - a true Free House
- ◆ Only 50 yards from Addiscombe Tram Stop (Routes 1 & 2)

## **THE CLARET FREE HOUSE & RESTAURANT**

33 The Broadway, Cheam Village  
Surrey SM3 8BL

### **CAMRA GBG 2003 Listed**

- ◆ Full range of Real Ales
- ◆ 36 seat air-conditioned restaurant (special Christmas menu available for December)

Open for dinner Wed - Sat 6.30pm - 11.30pm  
Sunday lunches 12 - 5pm

A La Carte - New menus every week  
(Available for private functions - please call for details)

Bar food available Mon - Sat 12 - 3.30pm

### **Mondays - Quiz Nite**

Cash prizes plus jackpot - from 8.30pm  
in the bar

### **Tuesdays - Caribbean Nite**

6pm - 10pm in the bar

### **Wednesdays - Mexican Nite**

6pm - 10pm in the bar

### **Thursdays - Curry Nite**

(Indian & Thai) 6pm - 10pm in the bar

## **A MARATHON CRAWL**

Pommeller's Rest, a Wetherspoon and the modern styled Adnams pub, the Bridge House, both on Tower Bridge Road. The Adnams pub is the only Adnams owned pub in London and serves the full range in a bright wine bar style setting.

Crossing Tower Bridge, the race turns East again down East Smithfield towards Docklands. You will come back along East Smithfield and The Highway on your return and your best bet is to take the DLR from Tower Gateway (straight across as you cross the bridge) to Limehouse. The Railway Tavern next to the station occasionally has real ale (Marstons Pedigree and others), but by far the best pub around here is the Queens Head on Flamborough Street.



Out of the station, turn right along Commercial Road and go under the railway, then immediately turn left under the railway again. About two hundred yards on your right you'll find this marvellous two bar Young's house, serving the usual Young's range. The pub is usually very bright and airy but the blinds are sometimes drawn if the television is on. This has the unfortunate effect of making the pub look closed from a distance, but don't be fooled. The pub is always busy as a result of its good reputation and its many sports teams, including East London Fives darts.

Back on the route, you may try popping into the Crown on Commercial Road, a small pub which occasionally serves real ale. Just before the marathon makes the turn into the Docklands, go down Three Colts Street on the right off Commercial Road just after St Anne's Church. The Five Bells and Blade Bone has now been turned into the 5B Urban Bar. You can't miss the pub, with its garish striped exterior, but although the pub is now converted to a theme bar style, it does retain an enthusiasm for beers. Fullers Pride and Spitfire are the regulars, and there is an American style menu.

Follow the route for a few hundred yards to



# A MARATHON CRAWL

Westferry station, and get the DLR to Canary Wharf, where the race runs down the South Colonnade, right next to the tower. On the North side of the Tower is Fishermans Walk, where the Cat & Canary attracts many of the office workers from the area. This modern Fullers pub offers the full range, including seasonal beers and you'll have a good view over the docks to the Billingsgate Fish Market!

Walk left out of the pub to Westferry Circus, and follow the runners south towards Marsh Wall and the 17 mile point of the race. Many of the journalists who work in the tower make the trip across the footbridges to the North Pole. If you didn't know it was there, you'd never find it, though go down Lenanton Steps on your right and you'll see the pub just opposite. The small bar area is often packed late in the evenings. National brands are served, but always in very good nick, and you'll often hear tomorrow's news early too! Despite the office workers, this is a real East End local, another with a fives dartboard.

The runners now go down Eastferry Road and back up Westferry Road, but this is not an area which is known for its real ale. Largely because there isn't any. The next decent beer on the route is so far round that the quickest route is to go back the way you came, and turn left at Heron Quay (where the strange traffic lights are) into the top of Westferry Road. On a corner a few hundred yards down is the Rogue Trader. This small pub trades as a bar and restaurant but serves Fullers London Pride. It also serves very good curries, and the back area of the pub is set aside with tables for this. The light modern décor does not detract from a very pleasant atmosphere.

A quick note for cheats who are looking for a shorter run. From the start of the race at Blackheath to Greenwich and then through the foot tunnel to Island Gardens is a short walk which will take the leisurely less than an hour. Not bad when you think that the runners have gone to the same places in 18 miles! A quick hop on the DLR to Canary Wharf and you can rejoin the crawl here.

The runners are now on their way back towards central London, and for much of the way are running on the same roads as they were earlier, but in the opposite direction (hopefully). Back at Westferry Station, they turn left and head to Narrow Street, which contains easily one of the best pubs in the area, and some say in East London. The Grapes is a pub with a well known award winning restaurant upstairs. The Burton Ale, Adnams and Pedigree are always superb and the bar is often crowded. A tiny deck at the back of the pub hangs over the river and (if you can get onto it) you'll be able to see the route

on the south side. Board games are available in the bar, and there's a good Sunday roast if you're there at lunchtime.

Further along Narrow Street is the Barley Mow, next to Limehouse Basin and with a large outdoor drinking area. Burton Ale and Greene King IPA are served.

Take the DLR from Limehouse back to Tower Gateway. The returning runners will be coming from St Katharine's Dock to the east, under Tower Bridge and in front of the Tower to Lower Thames Street. This area is difficult to find pubs in at weekends, as the masses of workers aren't around to give their trade. On the right, (and actually on Monument Street) is the Walrus and Carpenter, a



Young's pub with a wine bar in the basement and a restaurant upstairs which will be open. The small bar is comfortable and should give you a good view of the walkers outside who by now are reaching 24 miles of exertion.

From Blackfriars station take the circle line to Westminster for the last pub on this epic crawl. Coming out of the station, follow the runners towards Birdcage walk and turn left into Storeys Gate, where you'll find the Westminster Arms serving Adnams, Greene King and hopefully a guest. The pub is close to Parliament and as it is frequented by MPs of all parties comes with its own division bell. It is even rumoured that members of the Royal family might be there to congratulate you on your marathon!

And so, having completed the course, although I suspect not amongst the winners, you can now stick a sheet of A4 on your front and head around the corner to the Mall to collect your medal. By now everyone else will be crawling too. Mind you if you've had a drink in every pub mentioned here, the organisers will long have gone.

But then there was that bloke in a diving suit last year ...

*Ben Parr-Ferris, Dave Lee*

## AN ALTERNATIVE RICHMOND PUB CRAWL

Just in case we hadn't had enough beer while serving at the Woking Beer Festival that weekend, John Norman and I had arranged to meet up in Richmond at lunchtime on Sunday 10 November. I duly arrived at the Red Cow at 1.15; John was already half way down his first pint of Young's Bitter. It was spot on, as one would expect at one of three GBG listed pubs in Richmond. Both Special and Winter Warmer were also available. I noticed the bar had been knocked through at the far end to connect it up with what was properly the public bar. As the pub isn't that large in the first place, this didn't seem to spoil it or detract from its slightly unusual interior.

Moving to the White Horse, round behind, I'm afraid the colour scheme and the outside signage is enough to put one off this Fuller's pub and we weren't disappointed with its open plan style and various types and colours of chairs and tables scattered about, mostly set up for diners, some occupied by large families with all their children! With its bare floorboards and bare windows, it's hardly what you'd call a warm, comfortable pub. As for the beer, the first three pumps were all labelled London Pride. We had a look at the other four. They were too and yes, you've guessed it, we had Pride, well at least a half each anyway.

We carried on along Sheen Road, shortly to reach the Shepherd Neame pub, the Bishops' Finger,

which was closed for no apparent reason. Chairs and stools were stacked on tables inside.

Walking on a little further, crossing over and turning left down St Marys Grove, we came to the Mitre, another Young's pub, on a corner. This is a true, traditional, locals' pub, well patronised with darts being played and roast potatoes and sausages on the bar. There were even small bowls of jellied eels being passed around. Bitter and Special were on; we stuck to the Bitter, which was good. Among the main features of this pub are the fine stained glass windows at the front - none of your boring clear glass here. If there isn't a preservation order on these windows, there should be. They must be quite unique.

Leaving the Mitre, we doubled back to the Bishops' Finger but then up Kings Road until turning right to find some alleyways to bring us to The Vineyard and the Dukes Head, quite a smart, comfortable two-bar, locals' pub, again well patronised with Sunday lunches being served. It used to be a straight Courage pub and so it was good to see Young's Bitter and Hogs Back TEA on sale as well as Courage Best. The huge screen showing the rugby was rather intrusive, especially as there didn't seem to be anyone watching it; it meant we had to shout to make conversation.

Walking up past the Church to Friars Stile Road we found the Marlborough, quickly noticing it



## AN ALTERNATIVE RICHMOND PUB CRAWL

had been given the modern trendy look - clear frontage, bare boards and tables. We hesitated but thought we'd make our point, went in and behold, what do we find hidden behind a pillar? Tim Taylor Ram Tam, Coach House and Young's Bitter. We made do, as one does, with the Ram Tam and very good it was. Not quite our choice of type of pub, but it was worth it.

Turning back and up into Park Road, within a few minutes we came to the Hole in the Wall, a slightly strange building giving the impression it had been cut in half. The entrance is at the side and the bar is directly facing as you walk in. Carpeted and upholstered in red, it had a hotel lounge feel about it. Three beers were available: Young's Bitter, Greene King IPA and Courage Best. We had the Young's, which wasn't quite as good as the others we had already tried.

Proceeding down Park Road, we turned right into Queens Road towards the Richmond Park gates, stopping at the Lass of Richmond Hill. It was good to see this pub had gone back to its original name after being the Old Orleans with no real ale for some years. It's a Chef & Brewer pub, so done out for diners, but we were grateful to find some real ale. We were told there had been a run on it on the Saturday, so that out of three only Courage Best was on. I suppose we were bound to be drinking Courage sooner or later. Still, it was comfortable enough in here, in the old English country style, quite harmless.

Carrying on up the hill, we turned right at the top and soon reached the Roebuck, a pub with excellent views across the River Thames but not a lot could be seen as it was now dark. Some years ago this was a Youngers pub but now it's done out in the fakey old traditional style - not bad though. At the bar were Courage Best, Theakstons and Charles Wells Bombardier. Between us we tried the Theakstons and the Bombardier over a couple of games of bar billiards, and they were both rather good.

Having had our exercise for the afternoon, we left the Roebuck to drop sharply downhill to the Rose of York. We had heard that Sam Smiths had taken the real ale out but thought we'd check it out ourselves. It was true, of course, but we did stay to try their Extra Stout. I have to admit it was quite good, probably better than that other black stuff that comes from across the water or doesn't. It's a shame they've stopped the real ale as it's a very pleasant, traditional, oak-panelled bar.

Strange to finish up in a non-real ale pub or hotel. I have to admit that after the 65 bus ride back to Kingston we did adjourn to the Kings Tun for a final one.

*Clive Taylor*

**The Red Lion**  
**1 Mill Lane,**  
**Godalming,**  
**Surrey**  
**01483 415207**



**The only family-owned and  
run Freehouse in Godalming**

*(The first time in 200 years that the pub has not  
been brewery owned)*

*'Surrey'*  
*Pub of the Year 2002*  
*Surrey/Hants Branch*

**Our second Scottish Beer  
Festival takes place at  
Easter, Friday 18th -  
Monday 21st April  
ALL DAY EVERY DAY**

*We run '6' Real Ales from  
minor/micro/independent  
brewers (they need our  
support and we need yours)  
at excellent prices*

*We now have an extensive  
Belgian Beer List, a fine  
range of Bottle Conditioned  
Ales, as well as Lagers from  
around the World.*

*PS. I also cook some  
excellent food*

*CAMRA Good Beer Guide  
1994/5/6/7/8/9/2000/1/2/3*

# The FOX Green Lane Olde Hanwell London W7 Tel 020 8567 3912



- Timothy Taylors Landlord is our regular ale alongside London Pride and Brakspears. Plus ever changing Guest Ales
- Maggie's cooked food
- Contained pub garden
- 100 yards from Grand Union Canal
- Open 11am-11pm  
Sundays 12-10.30pm

## OUR EASTER BEER FESTIVAL Friday 18th April and Saturday 19th April *The Beers*

- ◆ Adnams Broadside ◆ Caledonian Deuchars
- ◆ Titanic Triple Screw
- ◆ Timothy Taylor Ram Tam & Landlord
- ◆ Hardys & Hansons Kimberley Best Mild
- ◆ Badger Best Bitter ◆ Hogsback TEA
- ◆ RCH East Street Cream
- ◆ Coach House Squires Gold & Spring Ale
- ◆ Archers Golden Bitter

## IDLE MOMENTS

As promised, here are the solutions to the puzzles set in February's Idle Moments column.

### NUMBER PUZZLES:

1. 9 Symphonies of Beethoven
2. 16 Sweet and Never Been Kissed
3. 45 Locks on the River Thames
4. 3 Coins in the fountain
5. 1956 Year of the Melbourne Olympics
6. 30 Players in a Game of Rugby Union
7. 40 Days from Easter Sunday to Ascension Day
8. 6 Feet in a Fathom
9. 180 Degrees Longitude is Half Way Round the World
10. 33 International Dialling Code for France

### BREWERY ANAGRAMS:

1. NO SHOUT - HOUSTON
2. THUG ON ORB - BROUGHTON
3. STORE EGGS - ST. GEORGES
4. THREAD ANT CART - RAT AND RATCHET
5. REAL BARD BANGER - BARGE AND BARREL
6. HE WANTED CHIRK - WICKED HATHERN
7. RODE WESTERN - DERWENT ROSE
8. 'ALLO KEW - OAKWELL
9. RICE BOSS - BRISCOE'S
10. COOKS R.C. TART - SCATTOR ROCK

### 5BY4:

1. The first parking meters came into service, in Oklahoma City - 1935
2. The first potato crisps were prepared at an hotel in Saratoga Springs, New York - 1853
3. Power steering first appeared in the Pierce Arrow "Run-About" - 1926
4. The first non-stick pans were put on sale, by the French Tefal company - 1955
5. American inventor Walter Hunt patented the "dress-pin" or safety pin - 1849
6. English teacher John Spilsbury invented the jigsaw puzzle - 1767
7. Blaise Pascal devised the first mechanical adding machine - 1642
8. Swiss engineer Georges de Mestral invented Velcro - 1948
9. Neon lighting was displayed for the first time, at the Pris Motor Show - 1910
10. The first passenger lift was installed, at the Palace of Versailles - 1743

### GENERAL KNOWLEDGE:

1. The book Anna Sewell dictated from her sick bed was Black Beauty.
2. The almanac which will reach its 140th edition in 2003 is Wisden (The cricket almanac for those of you who do not follow the summer game).
3. The Country which declared itself an independent republic on 17th June 1944 was Iceland (from Denmark).
4. Last year Hiram T. Schwarstein III (an American) was a Freshman; next year he will be a senior. This year he is a Sophomore (He is in his second year at college) *Since that question appeared last time I have received a message from our regular correspondent Colin Price pointing out that American degree courses run for four years and next year Hiram will be a Junior - not a Senior until the following year. Sorry.*
5. The produce of a ginnery is cotton (from the gin which is used to separate the fibre from the seeds).
6. You would find a nave and a fellow in a cart or carriage wheel (They are the hub and rim respectively.)
7. There are four breeds of draft horse used in Britain - Clydesdale, Shire, Suffolk and Percheron.
8. The famous railway company of which Daniel Gooch became the first Locomotive Superintendent was the Great Western Railway.
9. "Down and Out in London and Paris" was written by George Orwell.
10. The city in which they are still building 1950's Royal Enfield motorcycles is Madras.

# IDLE MOMENTS

Let's start with a quotation; here's one I found about Spring. It's by E.Y.Harburg and comes from "Tennyson Anyone?" - the start may seem familiar: 'In the spring a young man's fancy lightly turns to thoughts of love.

And in summer

And in autumn

And in winter-

See above.

Right, now it's time for some number puzzles:

1. 9 D of LJGR
2. 209 M is the L of the RT
3. 1 E on a C
4. 16 G on S
5. 1024 B in a K
6. 3 L of M
7. 88 Keys on a Piano
8. 42 is the A to the UQ (to L, the U and E)
9. 5 V in the A
10. 36 is SS

I should warn you that I'm in a mean mood this month - my Council Tax bill arrived this week. Perhaps that explains why all this month's anagrams are from new breweries appearing for the first time in the 2003 Good Beer Guide (so you're not likely to know many of them):

1. TRUSTY BEER
2. MOUNTIE WONDERS, "KING SANE?"
3. BRING TO FUND
4. DARING NOUN
5. SIR NEWT
6. OPEN FAITH
7. BRINE HEAD
8. FACES RAIN
9. PAWN PIG
10. HOT ON PRAM

And while I'm in a bad mood I might as well compound it by doing 5BY4 all about one of my least favourite sports - footie. Yes I know lots of you can recite F.A. Cup winners off in your sleep, but what about losing finalists? I was going to go for the 1980's but the year range spread because one club was losing finalist three times in the period that I finally covered. So here they are - can you match the losers with the years?

1. Watford
2. Nottingham Forest
3. Manchester City
4. Tottenham Hotspur
5. Everton
6. Queens Park Rangers
7. Arsenal
8. Crystal Palace
9. Liverpool
10. Brighton & Hove Albion

A. 1980, B. 1983, C. 1990, D. 1982,  
E. 1988, F. 1984, G. 1987, H. 1981,  
I. 1991, J. 1985

There's something a bit different about the General Knowledge questions this time - they're not quite so general; in fact they are all connected in some way with the arts (just to try and prove I'm not a total Philistine):

1. What, and where is the World famous building whose name translates into English as "The Staircase"?
2. What European city contains art galleries known as

The Belvedere (Lower and Upper) and the Kunsthistorisches Museum? (Clue - That's not French)

3. In what Bavarian town is there a theatre which is the home to the Passion Play, performed every ten years?
4. More mundanely, in which art gallery can you see Salvador Dali's "Lobster Telephone"?
5. What city is now home to the Royal Armouries?
6. And where (specifically) were they housed previously?
7. We all know that the National Gallery is in Trafalgar Square, but where is the National Portrait Gallery located?
8. In what city can you find the Hermitage Museum
9. In what London art gallery would you find Frans Hals' "Laughing Cavalier"?
10. And finally, what building houses the Courtauld Institute Galleries (containing many works by Degas, Monet, Manet, Renoir etc.)?

Right, that's me done. I'm on a week's holiday now - though it'll be all over by the time you read this.

Bye for now.

Andy Pirson

## J. J. Duffy



282 NORTHFIELD AVENUE,  
EALING, LONDON W5 4UB

TEL: 0208 932 1711 FAX: 0208 932 1722

### GUEST BEER REDUCED IN PRICE ON TUESDAYS

THIS MONTH'S GUESTS INCLUDE  
ADNAMS BITTER, MORLAND'S ORIGINAL  
RUDDLES COUNTY &  
TIMOTHY TAYLOR'S LANDLORD

MONDAY NIGHT - QUIZ NIGHT  
TUESDAY NIGHT - REAL ALE PROMOTION

THURSDAY NIGHT - STEAK & WINE  
PROMOTION

SUNDAY LUNCH - 12 noon - 4pm

SUNDAY NIGHT - LIVE MUSIC &  
TAKE YOUR PICK

ALWAYS IN STOCK

AND GREENE KING ABBOT

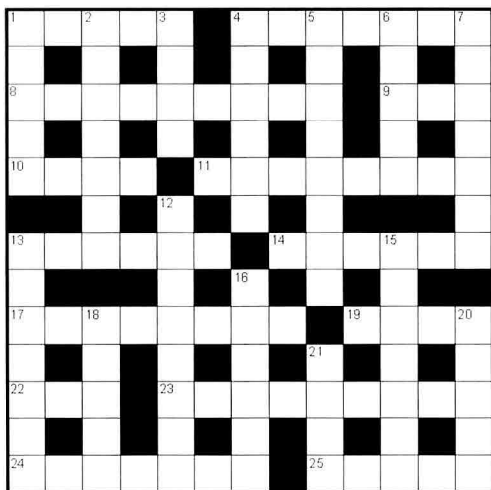
NEAREST TUBE - NORTHFIELDS (PICCADILLY LINE)

## CORRECTION

The Edinburgh article 'A Capital Gain' in the February/March issue was written by Al Ferrier alone, not jointly with Brian Bade as printed.

# LONDON DRINKER CROSSWORD

Compiled by DAVE QUINTON



Name \_\_\_\_\_

Address \_\_\_\_\_

\_\_\_\_\_

All correct entries received by first post on 28th May will be entered into a draw for the prize.

Prize winner will be announced in the June London Drinker.

The solution will be given in the April edition.

All entries to be submitted to:

London Drinker Crossword

25 Valens House

Upper Tulse Hill

London SW2 2RX

## SOLUTION TO FEBRUARY CROSSWORD



## £10 PRIZE TO BE WON

1. George 1st deserted cross wife. [5]
4. Blow up on finding former copper with drug. [7]
8. Holding back transport during break. [9]
9. Wave back. [3]
10. Born, died in want. [4]
11. They understand drink. [4,4]
13. Small part of dock. [6]
14. Am I to be included in race group? [6]
17. Military governors import the first weapons. [8]
19. He exploits the drug taker. [4]
22. Use the boat, apparently, for eggs. [3]
23. I see animal in charge of country. [9]
24. Longed to be excited on December 31st. [4,3]
25. Egghead dropped from job as minder. [5]

1. Drink provided for nobility. [5]
2. Examine six-footer after swallowing coin. [7]
3. Gem cut for aristocrat. [4]
4. Left, stirred up at losing letter. [6]
5. Father's mate embracing a bird. [8]
6. In the end it's nothing great. [5]
7. Initially exile may yearn to have drink in safe house. [7]
12. In New York this man's misleading appearance? [8]
13. Ruin of the French city. [7]
15. He has an advantage through drink, I hear. [7]
16. Popular nurse is mean. [6]
18. Singing while twirling a rope around. [5]
20. He's quick to upset 25. [5]
21. Primarily they all love coke, a white powder. [4]

Winner of the prize for the December Crossword:  
Ken Taylor, Eastcote, Middlesex

Other correct entries were received from:

Pat Andrews, C.Batty, Steve Block, John Blundell, Ben Burfutt, Eddie Carr, Richard Comaish, Charles Creasey, Paul Curson, Robert Day, Richard & Clever Clogs Douthwaite, Marion Goodall, Eileen Graves, Paul Gray, J.E.Green, R.J.Green, Tarnya Haigh, John Heath, Kevin Henriques, Billy Hernon, Sheerluck Holmes, Tom Kemp, Terry Lavell, Kuim Liquor, Mike Lloyd, Julian Long, K.I.May, M.J.Moran, R.Neill, Lee Newton & Scriven Davis, Pilly & Bob, Bryan Smith, Billy Sollocks, The Real Billy Sollocks, Bill Thackray, Tony Watkins, Martin Weedon, Ian Whiteman, Sue Wilson, David Woodward, Yak, Pete Yarlett.



# The Willoughby Arms

*Presents its*

## 7<sup>th</sup> St. George's Day Beer Festival



*Our Sponsors*



CAMRA  
Kingston & Leatherhead !  
London Pub of the Year  
2001

Home of  
The Kingston Upon Thames  
Branch of



The Society for the Preservation  
of Beers from the Wood



Featuring over 60 Real Ales & Ciders from across Britain

Noon S<sup>t</sup> George's Day- Wednesday 23<sup>rd</sup> April through until Sunday 27<sup>th</sup>.

Free admission Live music Friday evening *Big John & Dr Bob*

&

Saturday evening *The Norbiton & Memphis  
Blues Revue!*

PUB QUIZ Sunday from 9pm (FREE to enter!) *plus BOSS HOG*

Barbecues & Food throughout

"MysteryBeer" competition

Discount "Ale Trail" Cards

Festival T-shirts

47 Willoughby Road, Kingston Upon Thames, Surrey KT2 6LN

For further information call 0208 546 4236 or visit [www.spbwkingston.co.uk](http://www.spbwkingston.co.uk)

# Hogs Back

**EASTER**

## **TEAser**

*A chestnut coloured hoppy Ale  
with a fresh fruity aroma, smooth  
tasting with an exceptional flavour*

*THE tippie for the Easter break, and the rest of April*

---

**.... and coming up for May**

## **'DARK MILD'**

**A Traditionally brewed dark Mild Ale  
At 3.5% the taste belies its strength**

---

**Hogs Back Brewery Ltd**

**Manor Farm, The Street, Tongham, Surrey. GU10 1DE**

**Tel 01252 783000 Fax 01252 782328**

**[www.hogsback.co.uk](http://www.hogsback.co.uk)**

*Independent Brewers of the Finest English Ales*