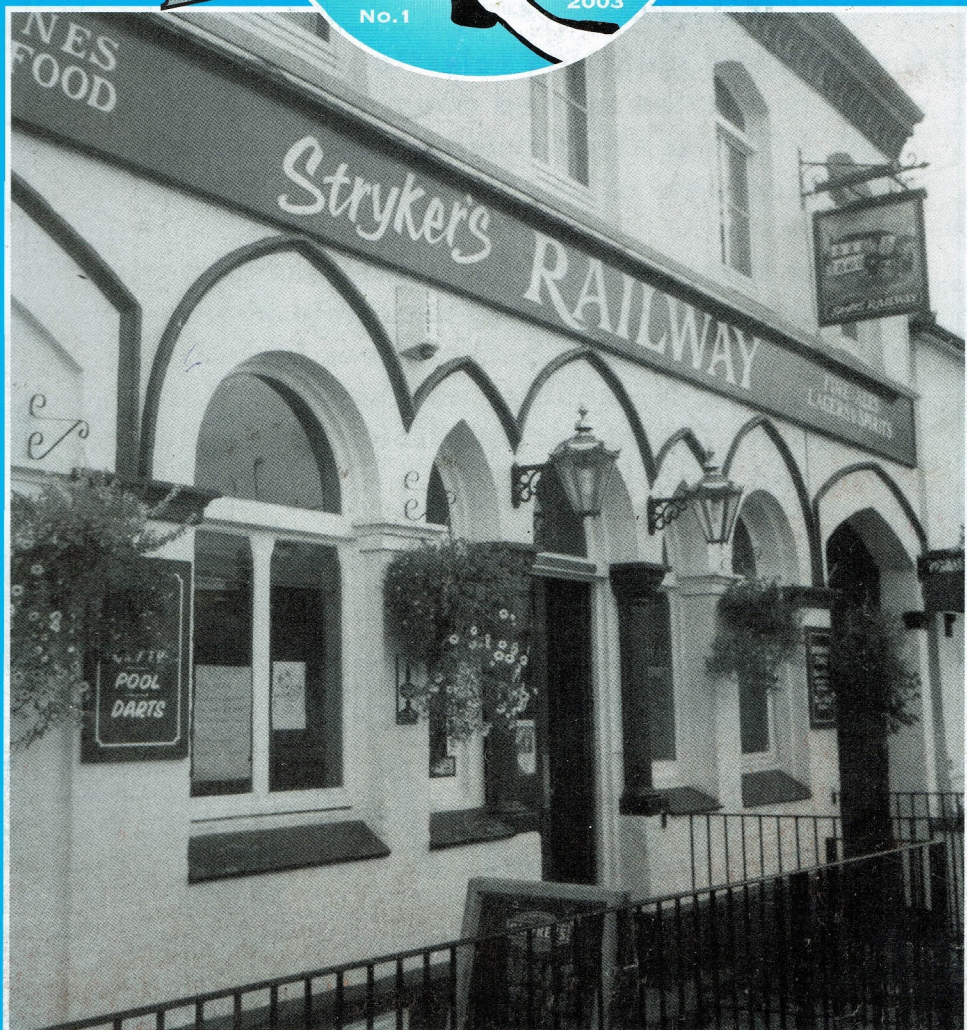
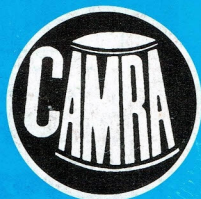


Produced on behalf of the London branches of the Campaign for Real Ale

# LONDON DRINKER

FEBRUARY  
MARCH  
2003

VOL 25  
No.1



Stryker's Railway, Hampton Wick (see page 31)

Photograph by Al Ferrier

**CAMRA SW London Pub of the Year  
1992, 1994, 1996, 1998 and 2000 -  
is Proud To Help Sponsor the  
BATTERSEA BEER FESTIVAL  
2003**

**A constantly changing selection of ales from micro breweries up and down the country. Over 2500 different ales served to date with always something new to try.**

**Adnams Bitter & Hop Back Summer Lightning plus Harveys Best always available. A good selection of German bottled beer including Wheat beers, Kolschbier and smoked malt Rauchbier. Thatchers traditional cider. Belgian beers and Fruit Wines.**

**Function room for hire. Quiz on Sundays.  
Cask Marque quality award.**

**Gary & Nicky look forward to seeing you soon.**

**Priory Arms**  
a genuine free house

**83 Lansdowne Way, Stockwell, SW8  
(5 minutes Stockwell Tube) Tel 020 7 622 1884**





## EDITORIAL

### NATIONAL PUBS WEEK - 22 FEBRUARY TO 1 MARCH 2003

*London Drinker is published by Mike Hammersley on behalf of the London Branches of CAMRA, the Campaign for Real Ale Limited, and edited by Geoff Strawbridge.*

*Material for publication should preferably be sent by e-mail to [geoff@coherent-tech.co.uk](mailto:geoff@coherent-tech.co.uk).*

*Letters by post may be sent to Robin Forsshaw-Wilson, 16 Sunningfields Crescent, Hendon, NW4 4RD.*

*Press releases should be sent to Dave Lee, 60 Fossil Rd, Leeisham, SE13 7DE.*

*Changes to pubs or beers should be reported to Capital Pubcheck, 2 Sandtoft Road, London SE7 7LR or by e-mail to [capitalpubcheck@hotmail.com](mailto:capitalpubcheck@hotmail.com).*

*For publication in April 2003, please send electronic documents to the Editor no later than Tuesday 11 March.*

*SUBSCRIPTIONS: £3.00 for mailing of 6 editions should be sent to Stan Tompkins, 122 Manor Way, Uxbridge, Middlesex, UB8 2BH (cheques payable to CAMRA London).*

*ADVERTISING: Peter Tonge;  
Tel: 020-8300 7693.*

*Printed by Cliffe Enterprise,  
Lewes, East Sussex.*

## IN THIS ISSUE

The future of English aroma hops	6
National news	8
London news	10
Book review	17
Letters	18
Branch diaries	20
Capital Pubcheck	22
Membership form	25
Both ends still burning	29
What's in a name?	32
Eire enterprise	33
A capital gain	35
Idle moments	36
Crossword	38

Following the success of the London Pub Week in mid-October, CAMRA is taking a broader initiative, through a National Pubs Week starting on 22 February, to encourage everybody to visit and show support for their local pub. With the backing of several breweries and pub companies, we will launch National Pubs Week by issuing posters, leaflets and beer mats to pubs around Britain. It is estimated that there are approximately 65,000 pubs in Britain and CAMRA hopes as many of them as possible will get behind National Pubs Week.

To quote Mike Benner, Head of Campaigns, 'The variety of different pubs to choose from in Britain is unique and something we should all be very proud about. It is important that with so many community pubs closing every month we encourage both regular and infrequent pubgoers to visit their pubs. Pubs can offer great food, beer and the perfect environment to socialise with friends.'

CAMRA's recent market research shows that over 80% of people prefer community and local pubs to themed bars in town centres. National Pubs Week is a week to celebrate all pubs, but especially those that offer the local community a place to socialise. During the week, the National Pub of the Year winner will be announced. Last year's winner was the Nursery Inn in Heaton Norris, Stockport. This was a rare victory for an urban pub; the majority of previous winners have been rural free houses.

Community pubs have always delighted the London Pub of the Year judges. Our last two winners, the Sultan in South Wimbledon and the Robin Hood & Little John in Bexleyheath are two good examples, both of them offering an exciting beer range, friendly service and a great atmosphere.

Another lovely community pub featured on the front cover of this magazine in October 2001. That year, and again last year, the Rose of Denmark in Cross Street, Barnes - 'not easy to find and therefore remains largely a locals' pub', as we said in reporting the certificate presentation - was chosen as the Richmond & Hounslow Branch Pub of the Year.

In December, the Rose of Denmark closed for a fortnight, then reopened not as a pub but as a fish restaurant, with a bar available only to diners and with the loss of the handpumps which had served Timothy Taylor's Landlord and Woodforde Wherry for as long as most of us could remember. Does any other pub in London keep Wherry?

CAMRA has no axe to grind against fish restaurants but, if the Pub is the Hub, as the Prince of Wales has recognised, we would urge Her Majesty's Government at least to ensure that no public house can cease to exist

*Views expressed in this publication are those of their individual authors  
and are not necessarily endorsed by the Editor or the  
Campaign for Real Ale Limited.*

## EDITORIAL

without public consultation. In its response last April to proposals for possible changes to the Use Classes Order and Temporary Uses Provision, CAMRA noted that the conversion of a public house to another use meant the permanent loss of an important community amenity.

We argued then that public houses should be made *sui generis*: placed in their own distinct category, so that any change of use is subject to planning permission. Will central government now please wake up and take notice.

For National Pubs Week, the message to CAMRA members is 'Why not get your local pub involved?' If landlords would like to receive free promotional posters and beer mats they can fill in the online order form or call Sofia Deus on 01727 867201. Posters and beer mats are in limited supply but are FREE to all pubs supporting National Pubs Week

I hope that not too many of you will be disappointed to find that by 22 February your pub has become something else, and that by more active campaigning we can help to keep our favourite beers in our favourite pubs.

*Robin Forshaw-Wilson*

*CAMRA Regional Director for Greater London*

### GBG30 FOR BATTERSEA: 5-7 FEBRUARY

**L**ondon's first festival of the year is once again the Battersea Beer Festival, and for 2003 it is a three day event.

Without the usual Saturday session, entertainment will be provided this time on the Wednesday night. Catch 22 will be on stage that evening, playing the kind of music that has won them over to the last two Kingston festivals and to regulars at the Canbury Arms.

As always, the festival aims to offer an attractive range of cask ales, cider and perry, foreign beers, bottle-conditioned ales and country wines, as well as providing free soft drinks for drivers. Visit the festival website at <http://beerfest.org> for a preview of the drinks list. There will be many session beers to enjoy.

Last year our local regional brewery treated us to Double Chocolate Stout on draught. For this year's festival, Young's have agreed to supply firkins as well as bottles of GBG30, the strong ale launched last autumn to celebrate the 30th issue of the Good Beer Guide. Don't miss it!

The Battersea poster this year reflects the 50th anniversary of the conquest of Everest - or walking thirteen times up the hill from Clapham Junction. Let's start the year on a high note!

Advertise in next month's  
**LONDON DRINKER**  
from only £45 (quarter  
page - all inclusive)  
Call Peter Tonge now on  
**020 8300 7693**

The Campaign for Real Ale (South West London)  
presents the



Design by Joim Geipel

### 13th Battersea Beer Festival

Over 100 Real Ales, Ciders and perries from across Britain  
Foreign beer, Food

**5 - 7 February 2003**

Open Wednesday to Friday from noon till 11pm

**Battersea Grand Hall**  
**Lavender Hill, London SW11**

behind Battersea Arts Centre, 10 minutes walk from Clapham Junction

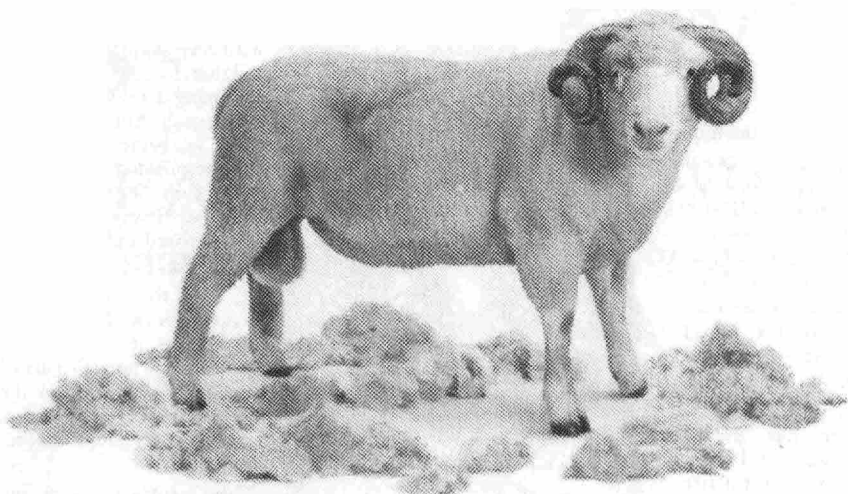
£2 admission (£3 after 5pm)

(£1 Wed before 5pm)

£1 discount for CAMRA members at all times

<http://beerfest.org>

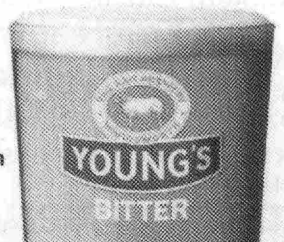




# Natural

How would you describe the taste?

From the Ram Brewery Wandsworth



## THE FUTURE OF ENGLISH AROMA HOPS

In approximately the last 10 years hop growing in this country has halved to around 50,000 Zentners (Zentner = 50 Kg).

The market has been affected by change in consumption of beer styles and increased production in the USA and Germany, amongst others.

Obviously the increase in sales of lager - with reduced bitterness and a reduced need for aroma hops - has contributed to less need for hops and hop types.

A bland beer with no nose does not need a fine aroma hop. Hops have been developed with increased alpha-acid levels (the factor determining bitterness) and this, combined with efficient chemical modification of the hops, extracting the maximum from them, has meant less need for hops.

The market has indeed polarised between the brewer who requires a distinctive

aroma and taste to his or her beers and others who just want the cheapest bitterness.

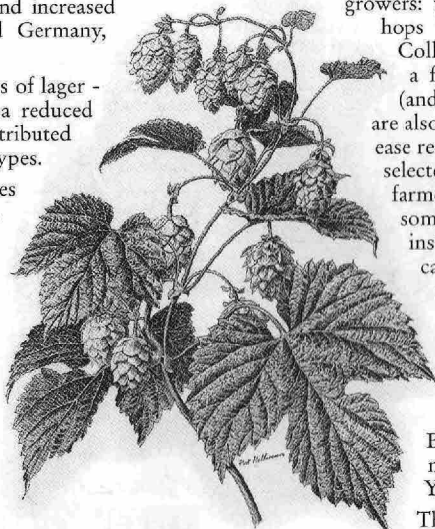
There is a little light on the horizon for the people who care about quality and for the hop growers: the development of hedgerow hops by Dr Peter Derby of Wye College. These dwarf hops produce a fine crop quality and are easy (and therefore cheap) to pick. They are also being developed for good disease resistance. Amongst the varieties selected as being suitable for the farmer to produce commercially are some with lovely aromas: for instance, "Jenny" that has a delicate anised and liquorice characteristic.

Also, the way in which these hedgerow hops are grown makes it easier to produce organic hops that are of great quality (look out for the Hop Back Brewery specials featuring new variety hops in the New Year!)

There is still a way to go but octogenarian Peter Davies, who farms in Hereford, is a leader in the field. I think this is the future for great new flavours to be added to the terrific English pint, whilst still being underpinned by great brewers such as Harveys and Youngs, brewing with traditional Goldings and Fuggles from the traditional hop garden.

A final thought: as the finer oils in the hop are lost in the boiling and fermentation processes, as much as twice the amount of expensive hops is needed in a quality pint than in an industrially produced lager, in spite of the latter's inflated price tag!

*John Gilbert*



# J. J. Duffy



**282 NORTHFIELD AVENUE,  
EALING, LONDON W5 4UB**

**TEL: 0208 932 1711 FAX: 0208 932 1722**

**GUEST BEER REDUCED  
IN PRICE ON TUESDAYS**

THIS MONTH'S GUESTS INCLUDE  
ADNAMS BITTER, MORLAND'S ORIGINAL  
RUDDLES COUNTY &  
TIMOTHY TAYLOR'S LANDLORD

**MONDAY NIGHT - QUIZ NIGHT**

**TUESDAY NIGHT - REAL ALE PROMOTION**

**THURSDAY NIGHT - STEAK & WINE  
PROMOTION**

**SUNDAY LUNCH - 12 noon - 4pm**

**SUNDAY NIGHT - LIVE MUSIC &  
TAKE YOUR PICK**

**ALWAYS IN STOCK - DRAUGHT BASS,  
LONDON PRIDE**

**NEAREST TUBE - NORTHFIELDS (PICCADILLY LINE)**

## SOFTWARE PRICE REDUCTIONS

In the compilation of the December/January *London Drinker*, electronic text failed to transmit some prices expressed in £.

In Belgravia revisited, the half of Youngs in the Rising Sun cost £1.08 and the half of Adnams in the Antelope £1.35.

In wunderbar Copenhagen, a half litre of beer was usually about £4, by comparison with £12.50 in Norway!

Apologies to Colin Price and Ian Pearson, and to all readers.

Rocking Thunder • Moonshine • Last Rites • Vixen's Vice • Latitude • Three Sheets • Blue Bird Bitter • Gothic • Destroyer • Deep DT • Rocket • Duck & Dive • Pitside • Zen •

# THE BOATERS INN



## REAL ALE FESTIVAL

Friday 28 February - Sunday 9 March

Real Ales On The Riverside  
featuring 30 - 40 Ales

**LIVE JAZZ**

*Sunday 2nd March*

*Wednesday 5th March*

*Sunday 9th March*

The Festival includes:

Ale Trail, Mystery Ale competition, Quizzes

**Opening hours:** Mon-Sat 11.00-11.00

Sun 12.00-10.30

**Great Food:** 12.00-2.30, 7.00-9.30

**THE BOATERS INN**

Canbury Gardens, Lower Ham Road

Kingston-upon-Thames, Surrey

020 8541 4672



## ◆ CAMRA calls for ale promotion

The Campaign for Real Ale is calling on Britain's brewers to team up and put their weight behind the promotion of the ailing beer market, and act now to reverse the long standing decline both in cask ales and the beer market overall.

Sales of beer have been going down for years, hit by everything from the sophisticated image of wine drinking to the growth of heavily promoted alcopops and spirit mixers. But CAMRA believes that the growing trend towards generic promotion offers an opportunity to revitalise the image of beer, building on such promotions as Beer Naturally from the Independent Family Brewers of Britain, and CAMRA's own Ask if it's Cask campaign.

Research following the third phase of Ask if it's Cask, which featured Ninkasi, Goddess of Beer, shows that 12-15 million people were exposed to the promotion through posters, beer mats and the media. This level of visibility was achieved despite the small budget available; CAMRA Head of Campaigns Mike Benner said *'With Ask if it's Cask CAMRA has shown what can be done with very low budgets. Imagine what we can achieve if we get together. Now we need to bring brewers and trade associations together for a co-ordinated generic campaign for beer.'*

He added *'We need to act collectively or the public will get confused about the messages from too many different campaigns.'* An industry-wide campaign to present beer as a wholesome, natural and stylish choice is seen as the only way to stem the fall in beer volumes, which according to Coors Brewers chief executive Peter Kendall, have fallen by seven million barrels in 20 years. Mr Kendall has warned that the decline must be halted if the traditional pub is to survive, and said *'Pubs will hold their position at the centre of British leisure only if they stock beers that surprise and delight.'*

## ◆ Licensing reform faces opposition

The Licensing Bill, which includes the long-awaited reform of pub opening hours, is facing opposition as it starts its way through Parliament. The Bill has had its second reading in the House of Lords, and is now heading for the Committee stage before going back to the Commons; it is expected to become law this summer, with its main provisions coming into force in 2004.

According to reports from the trade, however, the issue of transferring licensing applications from magistrates to local authorities is still causing deep distrust among publicans. There are fears of decisions being taken on political grounds, and of the imposition of unfair and expensive conditions; some councils are also voicing concerns about their

new role and about not being given the resources to do the job.

Opponents of the liberalisation have claimed that longer opening hours will lead to more noise, nuisance in residential areas and increased public order problems. The placing of licensing under council control is a key part of the system aimed at addressing these concerns. (And how can there be more public order problems than in a system that chucks everyone out on the street at the same time?)

Although the House of Lords broadly welcomed the decision to abolish the antiquated restrictions in the existing regime, there was deep scepticism about the Government's claim that red tape and industry costs would be reduced - with some suggestions that the changes could lead to exactly the opposite. CAMRA Research Manager Iain Loe said *'The Bill promises to simplify the process of applying for a licence, but the devil could be in the detail.'*

John Grogan, MP for Selby and chairman of the Parliamentary Beer Group's licensing panel, has been presented with CAMRA's annual Parliamentary award in recognition of his tireless efforts in championing the issue of licensing reform. He is credited with playing a major part in ensuring that the Licensing Bill was included in the Queen's Speech in November.

## ◆ Brewery update

More mixed news for breweries over the last couple of months, with boosts for two national breweries but the loss of yet another local one.

The bad news is of the closure of the Guernsey Brewery, a 150 year old brewery in St Peter Port, leaving the Channel Islands with just one volume cask ale brewery (Randalls). Following a merger involving Guernsey's parent company last year, the property company that now owns the brewery decided on closure after failing to find a replacement for head brewer John Sharkley, who retired recently after 30 years' service.

It is understood that the brewery, which has been brewing since 1856 and even managed to carry on during the World War II German occupation, is urgently in need of investment; on the other hand its prime site on the shore of St Peter Port makes it a potentially lucrative development opportunity. The brewery's Sunbeam Bitter is being brewed by the Topsy Toad brewpub on Jersey, but the Mild is only likely to make an occasional reappearance.

Better news from Manchester, where the threatened move of keg production from the Boddington Strangeways brewery has been shelved. The move would have left the brewery operating just one day a week, and with serious doubts over its future. The plans caused a local outcry and, with a potential

threat to Boddington's 'cream of Manchester' slogan, owners Interbrew climbed down. All Boddington's will remain brewed in Manchester, although Interbrew still say they need to cut 40 jobs to save money.

Coors is now the UK's second largest brewer following its purchase of most of Bass's breweries from Interbrew a year ago, and they have been conducting a review of their new purchase. One of the results was the closure of the Cape Hill brewery in Birmingham, but part compensation is the announcement of a million investment in the Burton brewery, aiming at increasing production by a million barrels a year. The work will be completed during 2003, and will provide new bottling and canning halls for the vast brewery complex, which includes both the old Bass and Ind Coope brewery sites.

## ◆ London trade down

Fuller's and Young's have both reported tough times in London in recent months, with trade still to recover from the fall in tourist numbers following the terrorist attacks in September 2001. Michael Turner, Chief Executive of Fuller's, has also said that job losses in the City, following three years of falling stock markets, have further depressed trade. Fuller's has seen like for like sales fall 5.1 per cent in 2002.

John Young, chairman of Young's said *'Trading conditions in London were particularly difficult, with relentless job cuts in the City, reduced tourist numbers, increased staff costs and insurance premiums, compounded by the cost burden of increased regulation.'* Despite this, Young's managed a 2.4 per cent increase in operating profit.

The brewing sides of both companies are doing well, however. London Pride sales grew 11 per cent, Organic Honey Dew increased its sales by half, while overall Young's beer volumes were up 9.1 per cent.

## ◆ but imports up

Also increasing volumes are the Calais supermarkets, with a big comeback for beer bootlegging reported since the High Court banned customs officials from carrying out random searches at ferry ports last summer. The High Court case was prompted by protests about heavyhanded tactics from Customs and Excise, which included random searches and confiscation of vehicles.

According to research by The British Institute of Innkeeping (BII), more than half of 15 year olds know where to buy bootleg beer. Estimating that overall losses to the Treasury could top £100m this year, the BII is calling for a cut in UK beer duty to

bring it more into line with European levels. Chief executive John McNamara said *'Smugglers' prime targets are young people and the vulnerable in society. Smuggling also undermines employment in Britain's highly regulated pub industry. With many country pubs trading marginally - currently up to five pubs a week are closing - illegal competition rids many villages of a safe and pleasurable community asset.'*

Advertise in next month's  
**LONDON DRINKER**  
from only £45 (quarter  
page - all inclusive)

Call Peter Tonge now on  
020 8300 7693

## Brasserie Les Sans-Culottes

27-29 Endell Street, London WC2H 9BA

Tel: 020 7379 8500

*Les Sans-Culottes, a traditional style  
Brasserie boasting a tempting array of  
French cuisine.*

*An on-site Microbrewery assists to  
re-create a unique, informal,  
atmospheric eatery and bar.*

*Always 4 home-brewed beers including:*

- ◆ Pilsner La Blonde "Steinbach" - light German style (4.5 ABV)
- ◆ Special Blonde "Continental" - classic continental (4.8 ABV)
- ◆ Bitter "Rousse" (4.6 ABV)

**Opening times:**

**Monday - Thursday 11.45am - 11.00pm**  
**Friday/Saturday 11.45am - 11.30pm**  
**Sunday 5.00pm - 10.30pm**

# LONDON PUBS GROUP PUB PRESERVATION UPDATE

## Alerts and concerns

**EC4, Old Bell, Fleet Street:** listed building consent for refurbishment was granted on 21 November 2002. According to the planning officer the proposed alterations are minor.

**E5, King's Head, 44 Middlesex Wharf:** there is currently an application for planning permission to demolish this pub which has been closed for some time. Local residents applied unsuccessfully for the pub to be spot-listed. Squatters who had been inhabiting the building were evicted in late November 2002.

**SW11, Bolingbroke, 2, Cobham Close:** despite objections from local residents and the Chair of the London Pubs Group on behalf of both the Group and South West London Branch, planning permission for change of use to residential (single dwelling) was granted by Wandsworth Borough Council on 15 November 2002.

**SW13, Red Lion, Castelnau:** it has recently been

reported that this pub may be altered to become a gastro pub and the interior may be refurbished in a modern style.

**Hampton, White Hart, 70 High Street:** despite objections from Richmond and Hounslow CAMRA branch and the London Pubs Group, Richmond Borough Council granted planning permission in December 2002 for change of use to residential flats.

## Successes and potential successes

**W1, Tottenham, 6 Oxford Street:** on 13 November 2002 the London Pubs Group submitted comments in respect of the current application for listed building consent for refurbishment - in general the proposals do not appear to be adverse.

On 16 December 2002 the Chair of the London Pubs Group was interviewed on BBC Radio London 94.9 FM's Robert Elms Show.

*Jane Jephcote*

## JOINT WINNERS ANNOUNCED IN FULLER'S PUB OF THE YEAR COMPETITION

The Griffin Trophy recognises Fuller's best pubs and is the highest accolade that can be given to the company's houses. This year 32 pubs were nominated for the first round of judging. The judges were looking at the appearance of the inside and outside of the pub, the quality of the ales and cellar, food, involvement in the local community and the licensees' commitment to enthusiasm.

The list was then reduced to eight before the deciding inspection by the final judges - Michael Turner, chief executive, beer and brands director John Roberts and Richard Fuller, sales director.

The results were announced at a ceremony on 4 December at Fuller's Griffin Brewery in Chiswick. In a closely fought battle, the Churchill Arms, Kensington was declared joint winner with the Railway Hotel in Wheatley as judges failed to find fault with either of them.

Fuller's chief executive  
Michael Turner presented

licensee Gerry O'Brien from The Churchill and tenants Peter and Tracie Lafford from the Railway Hotel with the Trophy and a plaque each, as well as a top class holiday for themselves and cash prizes for their staff.





## ROY LOSES IT ALL TO CHARITY

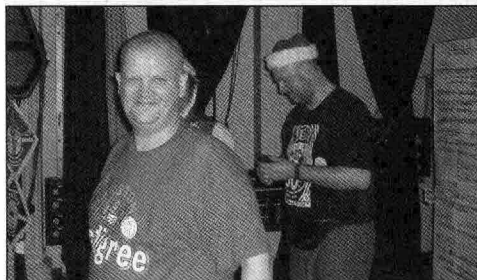
**A**FTER the death of Kevin Reeve prior to the opening of GBBF, another death occurred shortly before the opening of Pig's Ear festival in December, that of Geoff Paine, East London & City branch treasurer and a stalwart of bottled beer stands at festivals all over London.

And thus it came to pass that local spinster and pig-fancier, Mr Roy 'Binbag' Jenner was heard to utter late on Friday night 'If you lot can raise 200 notes at the staff party for their favourite charities (British Heart Foundation and RNTB respectively) I'll get my head shaved'.

Not wishing to deprive their punters of the sight of a hairless Jenner the staff responded rapidly and raised the necessary moolah on Sat afternoon. (Thanks to the T-shirt seller who when asked to donate replied 'Jenner having his head cut off, that's worth twenty quid of anyone's money!').

And so at shortly after 7pm Roy was gently escorted to the stage (Where did you get that gun from, Kim?). Festival organiser Robyn Parr-Ferris set to with a pair of scissors for the initial trim but eventually had to give up due to the increasing amount of hitherto unknown wildlife being discovered. Luckily Jon Russell Brown from the

foreign bar was to hand with his ever-present sheep-shearing kit and completed the task.



## THE LAMB REFUSES TO LIE DOWN

**O**ver the last year rumours have abounded that Ian and June at the Lamb in Surbiton were selling up and moving on. At one point they were on the brink of passing control to someone who had never kept real ale before, but this deal fell through, much to the relief of the local real ale drinkers. I was even tempted to consider taking up the challenge of taking on the pub and running it, but lack of finances put paid to that idea. I did not get any feedback from the locals when this idea fell by the wayside (perhaps it was best I didn't hear!).

All this seems to be behind Ian and June now, for they are planning to hold a beer festival on Saturday 15th February. Most of the beers will be served in a marquee to be erected in the garden. Here there will be 12 beers (under cooling), plus a further three in the bar, and two ciders. Details of the beers to be made available are not yet available, but Ian promises a range of styles from around the country and, if his selection of guest beers in the past in anything to go by, there should be some interesting ones available.

*Dave Oram  
Kingston and Leatherhead*

## THE ROYAL OAK



44 TABARD STREET, LONDON SE1  
Tel - 0207 357 7173

Traditional Harvey's Sussex Ales,  
Served in a Traditional Atmosphere

Open Mon-Fri 11am-11pm

Food Available  
Lunchtime & Evenings

Nearest tube - The Borough

## SOME PUBS IN CLERKENWELL

I recently work shifts in the Clerkenwell area and recently did an extra shift, finishing at 10pm. This gave me a chance to try a few local pubs, which led to a most pleasing discovery.

The Pakenham Arms, Pakenham Street WC1 is a free house open from 9am to 1am Monday to Friday, 9am to 11pm on Saturday and 9am to 10.30pm on Sunday. Beers from Harvey's, Fuller's, Adnams and Rebellion are available with four beers priced at £1.90 per pint and a four-pint pitcher available for the price of three pints for all draught beers. Food including breakfast is available throughout the day. No games are available but Sky TV is on for football.

The landlord explained that the extended hours were due to proximity of the Mount Pleasant Sorting Office which is a 24 hours a day, 7 days a week operation. Several pubs in the area were entitled to be open from 9am to 1am every day of the week but not all of them use this extension. The Pakenham used to open to 1am at the weekend but problems with the noise of customers arriving and leaving led them to revert to normal closing hours. A few days later I mentioned this to the barmaid in one of the early morning Smithfield pubs and she told me that bar staff in other nearby pubs sometimes go to the Pakenham after closing time. Perhaps one day all pubs will be like the Pakenham. Well we can dream, can't we?

The Apple Tree, Mount Pleasant WC1 is a recently refurbished Greene King pub that opens from 11am to 1am Monday to Friday but is closed at weekends. Darts, pool and Sky TV are available in an upstairs bar and food is served until 10pm. As well as Greene King IPA and Abbot, Hook Norton Old Hooky was on. Customers were still arriving after 11pm.

I was told both of these pubs are popular with students from nearby London university buildings. Also in Mount Pleasant is Churchill's, a small free house which seems to get most of its trade from local flats. Although it styles itself a wine bar it is in reality a fairly ordinary pub. Churchill's has just started to take advantage of the extended hours and its current opening hours are 11.30am to 1am Monday to Saturday (closed Sunday). The night I visited the pub it was more crowded than usual as a darts match was on and there was football on the TV. There was also a pool table and rather loud background music. Two real ales, Brain's SA and Brakspear's Special are sold although only the latter was available on the night of my visit.

The landlord of the Pakenham did mention four other pubs in the area that were entitled to the extended opening hours although he did not know if they used them. I will try to visit them for a further article.

Colin Price

## BEERS OF DISTINCTION

24 Main Street, Bredon on the Hill, DE73 1AN

Tel: 01332 864565 Fax: 01332 864566 Order line: 0771 5867124

*Purveyors of fine German & Belgian bottled beers  
Superb beers available now from the following retailers:*

### NORTH

**Drinkers Paradise Ltd, Castlehaven Road, Kentish Town, London NW1**  
**020 7482 6140 (250 beers)**

### EAST

**Grove Wines, Grove Road, Walthamstow, London E17**  
**020 8521 6998 (large selection)**

### SOUTH

**Nelson Wines, Merton High Street, Wimbledon, London SW19**  
**020 8542 1558 (1,000 beers)**

Upon presentation of this advertisement you will receive a free beer glass from any of the above outlets

# HUGE CASH REWARD

Missing from the "**Pakenham Arms**"  
Nº1 Pakenham Street, London WC1

Hundreds of gallons of real ales from the following breweries:-  
Fullers, Young, Slaters and Adnams.

---

All beers were of the very best quality - there seems no doubt that the parties who had partaken of these ales are well satisfied, as they would have returned (or at least complained) about them.

---

The Breweries have kindly replaced these missing ales so that they can be enjoyed by all her majesty's law abiding subjects, and any others who would like to imbibe in these fine ales during the months of February & March.

---

**All Fisherrow Beers £1.60**

**As from February...**

- ◆ **Adnam's Oyster Ale**
- ◆ **Harvey's Dark Stout**

***Your Host - Pat Mulligan***

(otherwise known as 'The Guvnor'!)

**020 7837 6933**



**The Red Lion**  
1 Mill Lane,  
Godalming,  
Surrey  
01483 415207



**The only family-owned and  
run Freehouse in Godalming**

*(The first time in 200 years that the pub has not  
been brewery owned)*

*'Surrey'*  
**Pub of the Year 2002**  
**Surrey/Hants Branch**

**Our next  
(Son of Scotland)  
Beer Festival will be held  
on Easter weekend  
in April  
See next London Drinker  
for more details.**

**We run '6' Real Ales from  
minor/micro/independent  
brewers (they need our  
support and we need yours)  
at excellent prices**

**We now have an extensive  
Belgian Beer List, a fine  
range of Bottle Conditioned  
Ales, as well as Lagers from  
around the World.**

**PS. I also cook some  
excellent food**

**CAMRA Good Beer Guide**  
1994/5/6/7/8/9/2000/1/2/3

## **TAKE FLIGHT AT THE LONDON DRINKER BEER & CIDER FESTIVAL**

**2**003 is the 100th anniversary of the Wright Brothers first flight and the London Drinker Beer & Cider Festival is celebrating the event with 50 British real ales plus real cider, perry and imported beer.

As usual there will be some beers especially for the event. It is hoped to have Fuller's Honeydew with Cranberry, normally only available in bottles, and Pitfield from North London will be supplying one of their special seasonal beers celebrating their 21st anniversary.

Charles Wells is once again sponsoring the beer tasting at this year's London Drinker Beer & Cider Festival on the Thursday lunchtime (20th March). The event will be hosted by the 2002 winner of the British Guild of Beer Writers' Travel Bursary, Alastair Gilmour. Alastair writes regularly on beer, pubs and breweries for the Journal in Newcastle. He has won a number of British Guild of Beer Writers' Awards as well as the Yorkshire Beer and Pub Writer of the Year Award in 1998.

If you would like an opportunity to see what all the fuss is about, why not come along. Simply arrive at the Festival between 12 noon and 12.30pm and get a free raffle ticket (entry is free both Wednesday and Thursday lunchtimes). The lucky winners will be drawn around 12.45pm.

But the Festival is more than just beer. There is excellent homemade food every session; a breweriana auction on Wednesday evening and the live jazz band, Jazzy Trousers on Friday evening. The balcony is open in the evenings, providing lots of seating for those who prefer to sit and sip.

For more details, including the latest on the beers, visit the website: [www.camranorthlondon.org.uk](http://www.camranorthlondon.org.uk). The Festival is open 19th to 21st March at the Camden Centre, Bidborough Street, WC1 (opposite St Pancras Station).

**Advertise in next month's  
LONDON DRINKER  
from only £45 (quarter  
page - all inclusive)  
Call Peter Tonge now on  
020 8300 7693**



**19th, 20th, 21st March**

Wednesday & Thursday 12-3pm, 5-10.30pm Friday 12-10.30pm

Food all sessions Breweriana Auction Wednesday night

Live music Friday night Imported beer

**Camden Centre, Bidborough  
Street, London WC1**

NO ADMISSION AFTER 10pm

**ORGANISERS RESERVE THE**

**RIGHT TO REFUSE ADMISSION**

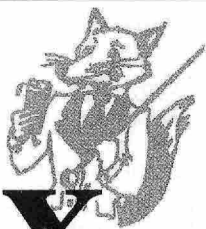


For further information phone 01727 867201, [www.camranorthlondon.org.uk](http://www.camranorthlondon.org.uk)

**Presented by CAMRA – The Campaign for Real Ale**

# The FOX

**Green Lane  
Olde Hanwell  
London W7  
Tel 020 8567 3912**



- Timothy Taylors Landlord is our regular ale alongside London Pride and Brakspears. Plus ever changing Guest Ales
- Maggie's cooked food
- Contained pub garden
- 100 yards from Grand Union Canal
- Open 11am-11pm  
Sundays 12-10.30pm

## OUR EASTER BEER FESTIVAL

**Friday 18th April and  
Saturday 19th April**

### *The Beers*

- ◆ Batemans Jester
- ◆ Greene King Abbot
- ◆ Adnams Broadside
- ◆ Caledonian Deuchars
- ◆ Titanic Triple Screw
- ◆ Timothy Taylor Ram Tam & Landlord

## SPBW LONDON PUB OF THE YEAR 2002

**D**uring late autumn and early winter six intrepid members of the Society for Preservation of Beers from the Wood visited nine excellent hosteleries nominated by our membership in the London Pub of the year competition. Visiting wasn't tough, but judging certainly was.

The finalists were all nominated for their known friendliness and ambience as well as the obvious quality and range of beer.

Like Miss World (although without the rioting) the unlucky competitors who didn't make the podium were. In no particular order - a trio of excellent, and ever popular Young's houses: the Sekforde Arms (Clerkenwell), the Buckingham Arms (Westminster), and the Hammersmith Ram; the Palm Tree (Bethnal Green) - Free; the Jerusalem Tavern (Farringdon), which is one of only two St Peter's houses in the country and the Golden Eagle (a quiet oasis in the West End).

Under our rules the previous year's winner is ineligible for entry, so we duly adjourned to our former champion, the Dog & Bell in Deptford, in order to hone the final placings and this is what we came up with.

In 3rd place came the Royal Oak, Borough. This fine establishment proffers a full range of Harvey's beers (including mild), serves excellent food and always gives a warm welcome.

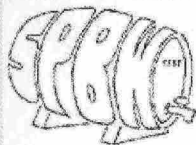
2nd was the Sultan in South Wimbledon, one of a select band of Hop Back pubs in the country, and again purveying a full range of the brewery's wares.

The winner was the legendary Wenlock Arms, famous for its superb array of fine brews. Serving microbrewery beers and regularly mild, this inn is both a warm and friendly local and a magnet for real ale lovers far and wide (some of the judging panel are quite wide). The Wenlock also stocks traditional cider and perry. Live jazz and blues feature on Friday, Saturday and Sunday and a quiz is held on Thursday nights.

This year, 2003 is the 40th Anniversary of the SPBW. New members are always welcome and we will be putting on a full range of social events.

For information please contact John Rooth by email:

j.rooth@nopworld.com  
or telephone:  
0207-890-9192 (w).



## BOOK REVIEW -

Tim Webb, *The Good Beer Guide to Belgium & Holland* (4th edition, CAMRA, 2002)

In the past ten years thousands of British beer enthusiasts have been discovering the beery delights of the Low Countries with a copy of Tim Webb's guide to the bars and breweries of Belgium, the Netherlands and Luxembourg. It is probably no great exaggeration that Tim Webb and Michael Jackson between them have a profound and positive effect on the promotion and, indeed, preservation of Benelux beers. Undoubtedly the influx of Anglo-American beer tourists who have followed in their wake has done a lot to save beers and even beer styles, which might otherwise have disappeared.

The latest of this invaluable edition has been extensively revised and totally redesigned. Both the main sections on the breweries and the bars themselves have been substantially extended and improved (with longer descriptions of bars for example). It is unlikely that wherever you are in Belgium (less so in the Netherlands) you will find yourself more than a few kilometres from an entry. There's even a short guide to where you can consume Belgian beer in London.

Because of space constraints the editor has largely restricted entries to bars that have a beer list of 60 beers in Dutch-speaking Flanders and 40 beers in French speaking Wallonia and the Netherlands. Compared with the range in an English pub, this may seem impressive, but even the Belgian equivalent of the basic back-street boozers would have a dozen or so bottled beers and a couple on tap. Unfortunately this restriction is far too rigorously enforced, with the result that particularly atmospheric or interesting smaller bars are often excluded or, at best, just mentioned in passing. For

example, Webb only devotes two pages to the wonderfully unspoiled bars of the Payottenland with their unique Lambic beer style. No beer tourist to Belgian should miss their unique attractions, but this guide does not really do them justice. As a result it might be worth holding on to the third edition, which includes many more traditional locals.

Perhaps the most irritating part of the guide is the constant editorialising by the author, which is present in almost every entry. According to Webb the Belgian brewing industry is going to hell in a hand-basket, and he makes sure you know it (see the article in last August's *London Drinker*). At times it's like travelling with a well-meaning but self-opinionated friend who just won't shut up. Another irritant are the patronising biographies of famous Belgians. I'm sure that they seemed like a good idea at the time, but it'll annoy the Dutch (why aren't there a list of famous Dutch people or Luxembourgers for that matter) and of course they are irrelevant in a beer guide.

For all its faults (and they are minor), this is by far the best guide to the bars of the Low Countries. No beer lover who intends to visit these countries can afford to be without a copy.

Simon Fowler

## ORGANIC GROWTH

Customers at three Young's pubs in London can enjoy organic food as well as Young's beers. The three pubs are the Ship and the Alma, both in Wandsworth, and the Cooper's Arms in Chelsea. They are run by Charles and Linda Gotto, who also own an organic farm near Dorking. Organic lamb and pork dishes are available with the unused parts of the animals being turned into organic burgers and sausages. Organic beef should be available soon and Linda has plans to milk the cows to make a Camembert style cheese. Organic eggs from the farm's Black Rock hens are used in the kitchen and sold to customers over the bar.

Charles Gotto is well suited to run this venture. His first job was at Smithfield meat market and he went on to run a butcher's shop in Wimbledon and a hotel before becoming a publican at the Ship.

Read more about this venture in the current Ram Magazine.

## KNICKERBOCKER'S BIER TOURS



Mar 7-9 Dachsbad Seminar Tour  
May 9-11 5 Brewery Tour  
Aug 29-31 Cologne Bierbörse Tour  
Oct 10-12 Bavarian Bier Tour  
All inclusive tours

For people who enjoy good  
times, travel and GREAT Beer!

For more info, contact,  
Thomas Perera, Bier Host

## KNICKERBOCKER'S BIER TOURS

Feld Str, 69 46535 Dinslaken Germany

Tel. (0049) 2064 58474

Email: Thomas\_Perera@yahoo.com

Visit our web site at [www.knickerbockersbiertours.de](http://www.knickerbockersbiertours.de)



### Dear Editor

I noticed in the December *London Drinker* that West Middlesex branch were having their Christmas party at Ealing Lawn Tennis Club. This is a bit ironic as the club was the first recorded outlet for keg beer. As most of the club's trade was at weekends they had problems with the beer going off during the week and asked Watneys if they had any ideas how to solve this problem. The rest, as they say, is history.

Colin Price

### Dear Editor

I have recently led a real ale ramble for the Enfield and Barnet branch of CAMRA.

The branch has also had a regular early September ramble for many years. Some other branches have also had regular or occasional rambles.

There is obviously some interest and I write to find out if sufficient numbers are of like mind to have a

regular all-London ramble. I suggest one ramble per 2 months i.e. for each *London Drinker*.

The start (and finish) should obviously be accessible by public transport and generally within the Travelcard area.

The most suitable day is likely to be a Saturday, as transport is usually better, and pubs are more likely to be open.

The ramble is probably best to be 5-8 miles in total and mainly rural and on public rights of way (as opposed to a pub crawl which, to my thinking, is on pavements with no more than 15 minutes between pubs).

If any of the readership are interested in this idea, and particularly to lead others on their favourite walk, please contact me on 020-8524 4239 or e-mail [ronald@loggy.freeserve.co.uk](mailto:ronald@loggy.freeserve.co.uk).

Hopefully the first ramble could be for the April/May issue.

Ron Andrews

### The Personal Drinks Company

## The best gift you'll send this year

Looking for the perfect gift?

How about a case of personalised Wine or Beer, delivered straight to the door of your friend, family member or colleague within 72 hours, making it an ideal last minute gift.

For further information and a brochure please call on  
017687 80356

or visit one of our websites:  
[www.personalwine.co.uk](http://www.personalwine.co.uk)  
[www.personalbeer.co.uk](http://www.personalbeer.co.uk)

### BILL LUBBOCK

This time last year I recorded with sadness the death of Betty Lubbock only a year after retiring from the Queen Dowager in Teddington - a pub she had run with her husband Bill for the last thirteen years out of an association of nearly thirty with Young's. Now I am afraid that it falls to me to report that Bill Lubbock died very nearly a year later, just before Christmas on 21 December.

Bill was a real gentleman and a proper character who made everybody welcome at the Dowager during his time there - and, I am sure (though I did not know him until he came to Teddington) in the three other Young's pubs he ran: the Britannia in Kensington, the Alexandra in Wimbledon and the Prince William Henry in Blackfriars Road, SE1 where he was the tenant when it first opened. Before that he and Betty worked for a number of years for the multi-tenancy chain, Goodhews, and they even knew Duncan Goodhew when he had hair.

Outside the pub Bill could often be seen out walking (often in nearby Bushy Park) with his chocolate retriever Ben. It's not many people who can claim to have seen Bill and Ben out together in public without being accused of being drunk!

I know Bill will be missed by the many friends he made during his time in the licensed trade and our thoughts go out to his daughter Jane; it must be particularly hard to lose both parents within the space of a year - especially around Christmas time.

Andy Pirson

WHATEVER  
YOU DO,  
TAKE PRIDE.



## BRANCH DIARIES

**W**elcome to our regular details of London CAMRA Branch contacts and events. This is where branches can say what is happening in their areas that might be of interest to drinkers across London. Events for February and March 2003 are listed below.

Branch meetings and socials are open to all - everyone is welcome to come along.

**LONDON PUBS GROUP.** *Jane Jephcote 020-7973 3102*

(W), e-mail [jane.jephcote@english-heritage.org.uk](mailto:jane.jephcote@english-heritage.org.uk)

**February - Sat 22** (11.30am) West Middlesex

daytime/evening crawl. Meet 11.30am Harrow-on-the-Hill Station then the following pubs at least: (11.45) King's Head, High St, Harrow-on-the-Hill (closed); (12 noon) Castle, 30 West St, Harrow-on-the-Hill; (2pm) Crown & Treaty House, 90 Oxford Rd, Uxbridge; (4pm) Three Horseshoes, 2 High St, Southall; (6pm) Forester, 1 Leighton Rd, West Ealing W13; (8pm) Red Lion, 13 St Mary's Rd, Ealing, W5. Use of public transport will be necessary at times.

**March - Wed 12** (7.15 for 7.30) Meeting. Royal Oak, Tabard St, SE1 (upstairs). All branches and members interested in pub research and preservation welcome.

**BEXLEY.** *Martyn Nicholls 01322 527857 (H).* Website:

[www.camrabexleybranch.org.uk](http://www.camrabexleybranch.org.uk)

**February - Wed 12** (8pm) Branch meeting, Victoria, Upper Belvedere

**March - Tue 4** (8pm) GBG entries meeting, Robin Hood & Little John, Bexleyheath. - **Wed 12** (8pm) Branch meeting, Royal Oak (Polly's), Bexleyheath.

**CROYDON & SUTTON.** *Terry Hewitt 020-8660 5931 (H).* 020-7918 3242 (W)

**February - Tue 4** (8.30) Wallington two pub social. Dukes Head, Wallington Green (dep 9.30) then Whispering Moon, Ross Parade. - **Thu 13** (8.30) S. Norwood social. Clifton Arms, Clifton Rd. SE 25. - **Tue 25** (8.30) Branch meeting (incl. GBG 2004 selections). Dog & Bull, Surrey St, Croydon.

**March - Wed 5** (8.30) Purley two pub social. Jolly Farmers, Purley Rd (dep 9.30) then Foxley Hatch, Russell Hill Parade. - **Tue 18** (8.30) Crystal Palace two pub social. Royal Albert, Westow Hill (dep 9.30) then Postal Order, Westow St. - **Thu 27** (8pm) Annual General Meeting. Windsor Castle, 378 Carshalton Rd, Carshalton.

Website: [www.croydoncamra.org.uk](http://www.croydoncamra.org.uk)

**EAST LONDON & CITY.** *Ben or Robyn 020-8521 4410*

(H), [robyn@pigsear.org.uk](mailto:robyn@pigsear.org.uk). Social enquiries: Bob Walker 07957 793360

**February - Tue 11** (8pm) Branch meeting (incl. GBG 2004 selections). Birkbeck Tavern, Langthorne Road E10. - **Wed 19** (8pm) Social. Swan, Ship Tavern Passage, EC3.

**March - Mon 3** (8pm) Social. White Lion, 37 Central St, EC1. - **Tue 11** (8pm) Branch meeting. City Pride, Farringdon La, EC1.

Website: [www.pigsear.org.uk](http://www.pigsear.org.uk)

**ENFIELD & BARNET.** *Brian Willis 020-8441 1892 (H),*

Work: [Brian.Willis@Saffery.com](mailto:Brian.Willis@Saffery.com)

**February - Sat 1** Visit to Maudlon's Brewery, Sudbury, Suffolk. Details from Tony Roberts 020 8482 9673 e-mail [anthonywroberts@hotmail.com](mailto:anthonywroberts@hotmail.com). - **Tue 4** (9pm) Social.

Monken Holt, 193 High St, Barnet EN5. - **Thu 13** (9pm) Social. Lamb, 52/54 Church St, Lower Edmonton N9. - **Sat 15** (noon) Greenwich crawl. Meet Greenwich station,

first pub Ashburnham Arms, Ashburnham Grove. Train from London Bridge 11.45am, arr. Greenwich 11.52 or DLR from Bank. - **Wed 19** (9pm) Social. Elephant Inn, 283 Ballards Lane, North Finchley N12. - **Sat 22** (12 noon) Pubs Week Promo in Enfield. Meet George, Enfield Town EN2. - **Wed 26** (9pm) Social. Dog & Duck, Hoppers Rd, Winchmore Hill N21.

**March - Wed 5** (9pm) Social. Lord Kitcheners, 49 East Barnet Rd, New Barnet EN4. - **Tue 11** (9pm) Social. White Hart, 290 Chase Rd, Southgate N14. - **Mon 17/Sat 22** Working Social at London Drinker Beer Festival, Camden Centre WC1. Tube/BR Kings Cross. - **Thu 27** (9pm) Social/London Drinker pick up. Tally Ho, 749 High Rd, North Finchley N12

Website: [camranorthlondon.org.uk/enfieldandbarnet](http://camranorthlondon.org.uk/enfieldandbarnet)

**KINGSTON & LEATHERHEAD.** *Clive Taylor 020-8949 2099(H) 020-8540 1901(W)*

**February - Wed 5** (8pm) Social gathering at Battersea Beer Festival. - **Thu 6** (8pm) AGM. Royal Oak, Coombe Rd, New Malden. - **Thu 20** (8pm) GBG selection meeting. Waggon & Horses, Surbiton Hill, Surbiton. - **Wed 26** (8pm) National Pub Week crawl of Surbiton. Meet Coronation Hall, nr Surbiton Stn, then to other pubs along Victoria Rd.

**March - Sat 1** (12.30) Joint crawl of Dorking with East and Mid-Surrey branch. Meet Kings Arms, West St. (travellers from Kingston can catch 465 bus at 11.41.). - **Thu 13** (8.30) Branch meeting. Rising Sun, Heathcote Rd, Epsom. Local members in the Epsom area are especially welcome. - **Fri 14-Sun 16** Proposed weekend trip to the Black Country, visiting pubs and hopefully a local brewery. Please contact if interested. - **Fri 28** (8pm) Visit some classic old London pubs around Oxford St. area. Meet Argyll Arms, then Cock, George, Dover Castle and so on. Please let Clive know if interested.

**April - Sat 5** Proposed Day Trip to Brussels on Eurostar. Fare £49. Please contact if interested.

**NORTH LONDON.** *Mike Rose 020-8342 8584, [lynnmikeros@aol.com](mailto:lynnmikeros@aol.com)*

**February - Tue 4** (8pm) Branch meeting and final selection for 2004 Good Beer Guide. Rugby Tavern, 19 Great James St, WC1.

**March - Wed 19 to Fri 21** London Drinker Beer and Cider Festival. Camden Centre, Bidborough St, WC1 (behind Euston Rd, opposite St Pancras station.

Website: [www.camranorthlondon.org.uk](http://www.camranorthlondon.org.uk)

**RICHMOND & HOUNSLOW.** *Brian Kirton 020 8384 7284 (H)*

**February - Tue 4** (8.30) Social and listing for 2004 Good Beer Guide, Red Cow, 59 Sheen Rd., Richmond. - **Thu 6** (8pm and hourly meet) Social at Battersea Beer Festival, Grand Hall, Lavender Hill, SW11, meet in front of stage. - **Wed 12** (8.30) Allocation of GBG survey forms; venue to be decided at 4 Feb. meeting. - **Wed 19** (8.30) Branch meeting, Magpie & Crown, 128 High St, Brentford. - **Tue 25** (8.30) Collection of GBG survey forms, and Twickenham Beer Festival planning meeting, Moon under Water, 53/57 London Rd., Twickenham. - **Thu 27** (8.30) Social to celebrate National Pub Week, Red Lion, 92/94 Linkfield Rd., Isleworth.

**March - Wed 5** (8pm) Richmond stroll, start at Triple Crown, 15 Kew Foot Rd; then (9pm) Shaftesbury Arms, 121/123 Kew Rd; (10pm) Blue Anchor, 86 Kew Rd. -

## BRANCH DIARIES

**Tue 11 (8.30)** Beer Festival planning meeting, Prince Albert, 30 Hampton Rd., Twickenham. - **Wed 19 (6pm and hourly meet to 8pm)** Social at London Drinker Beer Festival, Camden Centre, Bidborough St., WC1 (opposite St. Pancras Station), meet at Products stand. -

**Sat/Sun 22/23** Weekend trip visiting Batemans Brewery, Wainfleet, Lincs., by minibus or car, places limited, but at a good price incl. overnight accommodation – for info/bookings contact Social Sec. Ian Winfield, home tel. 8977 9643. - **Mon 31 (8pm)** West London Inter-Branch Quiz Night and Raffle, Magpie & Crown, 128 High St, Brentford, all welcome to make up teams of approx. 4 – small entry fee, cash prizes!

Website: [www.jobin.freeseve.co.uk/rbcamra1.htm](http://www.jobin.freeseve.co.uk/rbcamra1.htm)

**SOUTH EAST LONDON.** Dave Lee 020-8694 2687 (H).

**February - Tue 4 (8pm)** Branch/committee meeting, Royal Oak, Tabard St, SE1. - **Tue 11 (8pm)** Social. Prince of Wales, 48 Cleaver Square, Kennington SE11. - **Tue 18 (8pm)** Social. Zero Degrees, 29-31 Montpelier Vale, Blackheath SE3, then (9.30) Greenwich Union, 56 Royal Hill, Greenwich SE10. - **Mon 24 (8pm)** Catford Beer Festival meeting, Ashburnham Arms, 25 Ashburnham Grove SE10.

**March - Mon 3 (8pm)** Branch/committee meeting, Watch House, Lewisham High St, SE13. - **Thu 13 (8pm)** Social, Red Lion, 10 North Road, Bromley. - **Wed 19 (8pm)** Social, Beehive, 60-62 Carter St, Walworth SE17. - **Mon 31 (8pm)** Catford Beer Festival meeting, Ashburnham Arms, 25 Ashburnham Grove SE10.

Website: [www.selcamra.org.uk/camra3.htm](http://www.selcamra.org.uk/camra3.htm)

**SOUTH WEST ESSEX.** Andrew Clifton 01708 765150

(H), [swessex@clara.co.uk](mailto:swessex@clara.co.uk)

**February - Thu 6 (8.30)** Social, Great Spoon of Ilford, 114/116 Cranbrook Rd (A123), Ilford. - **Wed 12 (8.30)** Branch AGM, Foxhound, 18 High Rd (B188), Orsett. - **Sat 15 (12.30 at brewery)** Brewery Visit, Gate Brewery, Sawbridgeworth. Coach from Chadwell Heath, Romford, Upminster and Stanford le Hope. Contact Graham Platt on 020-8220 0215. - **Thu 20 (8.30 start)** Upminster Social and Mini-crawl, start in Huntsman & Hounds, 2 Ockendon Rd, Corbets Tey, then (9.45) Crumpled Horn, 33-37 Corbets Tey Rd. - **Wed 26 (8.30 start)** Pubs Week Social and Mini-crawl in Grays, start in Grays AFC, Bridge Rd, then (9.45) Theobald Arms, 141 Argent St.

**March - Wed 5 (8.30)** Good Beer Guide Selection Mtg (London Area) Travellers Friend, 496/498 High Rd (A104), Woodford Green. - **Sat 8 (12.30 at brewery)** Brewery Visit, Pottton Brewery, Pottton, Beds. Coach from Chadwell Heath, Romford, Upminster and Stanford le Hope. Contact Graham Platt on 020-8220 0215. - **Thu 13 (8.30)** Social, Bell, High Rd, Horndon on the Hill. - **Sun 16 (12.30)** Social, Anchor, Civic Sq, Tilbury. - **Wed 19 (8pm)** Social at London Drinker Beer Festival (for further details see details of festival). - **Thu 27 (8.30)** Social, Brave Nelson, 138 Woodman Rd, Warley. - **Mon 31 (8.30)** Good Beer Guide Selection Mtg (Essex Area), Foxhound, 18 High Rd (B188), Orsett.

Website: [www.swessex.clara.net](http://www.swessex.clara.net)

**SOUTH WEST LONDON.** Mark Bravery 020-8540 9183 (H) 020-7438 6365 (W), [markbravery@blueyonder.co.uk](mailto:markbravery@blueyonder.co.uk).

**February - Wed 5 to Fri 7 (12 noon-11pm)**, Battersea Beer Festival, Battersea Grand Hall, Lavender Hill, SW11. - **Sat 15 (from 7pm)**. Post-festival social, Sultan,

78 Norman Rd, South Wimbledon SW19. - **Mon 24 (7.30)**. Branch/committee meeting, Grove, 39 Oldridge Rd, Balham SW12.

**March - Sun 2 (10.30am)**. Good Beer Guide 2004 selection meeting, Priory Arms, 83 Lansdowne Way, SW8 (upstairs room). - **Thu 20** Crawl of Mitcham. Meet (7-7.30) Cricketers, 340 London Rd. To include (8.30) Windmill, 40 Commonsides West; (9.15) Kings Arms, 268 London Rd; finally (10.15) Gorrington Park, 29 London Rd, Tooting SW17.

Website: [www.swlcamra.org](http://www.swlcamra.org)

**WATFORD & DISTRICT.** Martin Few 01923 252412

(H), [watfordcamra@hotmail.com](mailto:watfordcamra@hotmail.com)

**February - Fri 7 (8.30)** Pub of the Year presentation. Venue to be confirmed. - **Thu 13 (8.30)** Social, Tudor Arms, Watford. - **Wed 19** Watford: Pub on the Corner (8.30), Estcourt Arms (9 pm). - **Fri 28** National Pubs Week Bushey crawl, Devonshire Arms (7pm), Black Boy (8pm), Horse & Chains (9pm), Swan (10pm). **March - Thu 6**. Rickmansworth: Feathers (8.30), Pennsylvanian (9.30). - **Tue 11** Trip to see Branch Secretary in musical production 'Man of La Mancha'. The Pump House Theatre, Watford. Free entry to Colne River Bar. - **Sun 16 (12.30)** Sportsman, Croxley. - **Wed 26 (8.30)** Branch AGM. Estcourt Arms, Watford.

Website: [www.watfordcamra.org.uk](http://www.watfordcamra.org.uk)

**WEST LONDON.** Kevin O'Donovan, 07990 972 424 (M), [westlondoncamra@aol.com](mailto:westlondoncamra@aol.com)

**February - Tue 4 (7pm)** - GBG Preliminary selection seating, Tabard, Bath Rd, Chiswick. - **Wed 12 (8pm)** Social, Cross Keys, 57 Black Lion La, W6. - **Tue 25 (7pm)** GBG Final selection meeting, Victoria, 10a Strathearn Place W2, in the 'Library' upstairs.

**March - Tue 4 (8pm)** Branch meeting, Tabard, Bath Rd, Chiswick. - **Wed 12 (7pm)** Social, Duke of York, 47 Rathbone St, W1. - **Mon 31 (7.30)** Fundraising Pub Quiz and Raffle with West Middlesex and Richmond & Hounslow branches. Magpie & Crown, 128 High St, Brentford. Quiz will start at 8pm, 4 or 5 members per team, with all profits going to West London CAMRA funds.

**WEST MIDDLESEX.** Paul Dabrowski (Social Secretary) 020-8571-9146 (H) 0118-923 7445 (W).

**February - Tue 4 (8pm)** Two-pub social. General Eliot, and Pipemaker's Arms, St John's Rd, Uxbridge. - **Wed 12 (8.30)** Branch mMeeting. Duke of York, Steyne Rd, Acton. - **Sat 22 (12 noon)** London Pubs Group Crawl of Heritage Pubs in West Middlesex. See above. - **Wed 26 (8.30)** Social, Fox, Green La, Hanwell.

**March - Wed 5 (8pm)** GBG Submissions social – Bridge Hotel, Western Ave, Greenford. - **Wed 12 (8.30)** Branch meeting, Jolly Gardeners, High St, Cranford. - **Thu 20 (8pm)** Mini-Crawl. Rose & Crown, Church Path, Sth Ealing, then New Inn, Castle and Red Lion, St Mary's Rd, Ealing. - **Thu 27 (8pm)** London Drinker distribution - Magpie & Crown, High St, Brentford, then Fox, Green La, Hanwell. - **Mon 31 (7.30)** Inter-branch Quiz. Magpie & Crown, High St, Brentford.

Electronic copy deadline for the April/May edition: 11th March 2003. Please send entries to [geoff@coherent-tech.co.uk](mailto:geoff@coherent-tech.co.uk).



The aim of 'Capital Pubcheck' is to share information about the latest happenings on the London pub scene including new pub and bar openings, name changes, acquisitions, closures, notable changes to beer ranges etc.

Information is gathered from a variety of sources including London Drinker readers, individual CAMRA members and branch contacts, breweries, pub operators, landlords etc. If you would like to contribute to 'Pubcheck' please send your news to the address below.

We record two new Wetherspoon openings, in Croydon and W12 Shepherds Bush. The former is part of the Lloyds No 1 chain and is the first in London to impose entry charges in late evenings. We hope this does not set a precedent. Proving that real ale is still alive and well in East London, it features in a new modern-style bar in E15 Stratford and has been reinstated in a revamped local in E17 Walthamstow Village. Two further outlets have been discovered in Beckenham and Bexleyheath for Zerodegrees brewpubs' unpasteurised beers, albeit in keg form. The

conversion of pubs to upmarket restaurants continues, the latest being the loss of a Good Beer Guide pub and CAMRA Branch Pub of the Year in SW13 Barnes.

Cross references to CAMRA's various pub guides covering Greater London are provided to enable easy updating. The numbers in brackets after each entry refer to the page numbers in the following guides: E - East London & City Beer Guide, 3rd edition; H - Hertfordshire Guide to Real Ale, 2000 edition; K - Guide to Kent Pubs, 10th edition; 8K - Real Ale Guide to Kent Pubs, 8th edition; N - North London Beer Guide, 3rd edition; SE - South East London Pub Guide, 4th edition; 3SE - South East London Pub Guide, 3rd edition; SW - South West London Pub Guide, 2nd edition; W - Real Beer in West London; X - Essex Beer Guide, 9th edition.

If you would like to report changes to pubs or beers, please write to: Capital Pubcheck, 2 Sandtoft Road, London SE7 7LR or e-mail: capitalpubcheck@hotmail.com.

## NEW & REOPENED PUBS & PUBS CONVERTED TO REAL ALE

### CENTRAL

**EC1, BAR 38**, 91/93 St John St. No real ale. S&N bar opened early 2002 in former commercial premises.

**EC1, BLAKES**, 2 St John's Sq. Reopened and renamed **BEAR**. Adnams: Bitter. Now a Geronimo Inns Free House, ex-Whitbread. Formerly **SQUARE**, originally **COACH & HORSES**. (E14, U79, U113, U152)

**EC2, BEDROOM BAR**, 62 Rivington St. No real ale. First floor Free House/bar in former commercial premises. Opens evenings only until late, with entry fee on occasions after normal hours.

**EC3, BAR 38**, St Clare House, 30-33 Minories. No real ale. S&N bar opened February 2002 on ground floor of office building.

**EC3, BAR MED**, 3 Minster Court, off Mincing Lane. No real ale. SFI Free House/bar opened in former restaurant premises c2000, not previously reported.

**EC3, VALENTE**, 3/5 Fenchurch Place. Free House/bar and restaurant opened October 2002 on ground floor of new office block next door to Fenchurch Street Station.

**W1(S), FREEDOM**, 60-66 Wardour St. No real ale. Regent Inns Free House/bar in former

commercial premises, opened c1999 but not previously reported.

### EAST

**E15, FOX & STRATFORD**, 108/110 The Grove. Adnams: Bitter; Fuller; London Pride; Taylor: Landlord; Wells: Bombardier; varying guest beers (e.g. Caledonian: Deuchars IPA, Smiles: Best Bitter), all served on gravity dispense from cooled casks on the bar back - three or four real ales available at any one time. New Free House/bar opened September 2002 in former commercial premises by small 'London & City Taverns' chain. Decorated in contemporary style with cream and maroon décor, polished pine flooring, large French windows to front and side, exposed brickwork and ceiling ventilators. Carpeted restaurant area to rear. Food is 'English with a twist'. Disabled WC. Open all permitted hours. The commitment to real ale is welcomed, in marked contrast to most new establishments of its ilk. However the beers are not advertised in any way and the lack of handpumps and clips entails squinting at the small cask stickers to identify what is available.

**E17, NAGS HEAD**, 9 Orford Rd. Adnams: Broadside; Fuller: London Pride; Shepherd Neame: Spitfire. Reopened and refurbished in light and airy style with cream décor and garden at rear. Live jazz from 2.30pm Sunday. Recommended. Now a Free House, ex-Watney. (E168, U165)

# CAPITAL PUBCHECK - UPDATE 169

## NORTH

**N1, TRAFIK**, 40 Hoxton Sq. No real ale. Free House/ bar in former commercial premises. Entry fee some evenings. Has 'back' entrance also at 331 Old St, EC1.

**N3, TAYLORS**, 369 Regent Park Rd. Renamed **DIGNITY**. Taylor: Landlord, and range of Belgian bottled beers. (N70, U151)

**N14, WHITE HART**, 290 Chase Rd. Courage: Best Bitter; Wells: Bombardier. Refurbished. (Reinstatement) (N120, U163)

**N22, LITTEN TREE**, Unit 8, 88-96 High Rd (entrance on Lymington Ave). No real ale. New SFI Free House opened by 2001 but not previously reported and probably sold real ale at some time. Now renamed **WOOD GREEN TAVERN**, H unused.

## SOUTH EAST

**BECKENHAM, FLUX**, 1-4 Southend Rd. No real ale. A 'bar and café' opened c1998 in former 'Lazy Toad' wine bar premises and in the same ownership as the Zerodegrees brewpub in Blackheath SE3. It dispenses, from fonts, keg Pilsner (4.8%), Pale Ale (4.6%) and Black Lager (4.8%) brewed by Zerodegrees. Predominantly cream décor and pine flooring with small bar at front and raised seating area (with TV) at rear, with French windows overlooking Beckenham Junction Station. Club downstairs open Thurs-Sat evenings. Bar opens 5pm-10.30 Mon/Tues, 5pm-11 Wed, 5pm-1am Thurs, 5pm-2am Fri, 12.30pm-2am Sat, 12.30pm-10.30 Sun. Happy 'hour' 5-8pm Mon-Fri, 12.30-7 Sat/Sun.

**BEXLEYHEATH, OHM**, Albion Rd (nr Megabowl). No real ale. Another bar opened in May 2002 and in the same ownership as the Zerodegrees brewpub. It was previously a bar and restaurant named 'Frontier Post' and was originally a warehouse up until about 10 years ago. It serves keg Zerodegrees Pilsner, Pale Ale and Black Lager (see above) together with Wheat Ale (4.2%). Decorated in uncluttered minimalist style with a scattering of seating, polished cream floor tiling, zinc bar top and cream décor. Features various dance music sessions in evenings from a DJ console in corner. DVD screens above bar. Garden bar at side leads through to outdoor drinking area with waterfall and flame feature. Open 5pm-12 Thurs-Sun only. (Note £2 entry charge after 8pm Fri/Sat!) Over 21s only. Happy 'hour' 5-7pm when pints are £1.50.

**CROYDON, LLOYDS No 1 (MILAN BAR)**, Unit C, 14-32 High St. Courage: Directors Bitter; Shepherd Neame: Spitfire; Theakston: Best Bitter.

New Wetherspoon Free House/bar opened December 2002 in part of ground floor and basement of former Grants department store, next door to EDWARDS reported in Update 168. Orange and cream décor with abstract paintings, a mixture of furnishings and exposed ceiling extractors. A plethora of flat screen TVs with piped 'music' increasing in volume as the day progresses. No smoking/family area at rear of ground floor. Stairs lead down to a large basement bar with a small dance area and wall statue of headless angel. Food, disabled WC. Open 10am (for breakfast)-1am Mon-Thurs, 10am-2am Fri-Sat, 12-12 Sun, but beware entry charges of £2 after 11pm Sun-Thurs and £4 after 9pm Fri/Sat. Charges after 11pm were a condition of the licence

## SOUTH WEST

**SW17, KINGS HEAD**, 84 Upper Tooting Rd. Wells: Bombardier. Refurbished. (Reinstatement) (SW109, U142, U151, U157)

## WEST

**W12, CENTRAL BAR**, 1st floor, West 12 Shopping & Leisure Centre, Shepherds Bush Green. Courage: Best Bitter, Directors Bitter; Greene King: Abbot; Shepherd Neame: Spitfire, 2 guest beers. Brand new Wetherspoon Free House opened mid-December 2002 on upper floor of new indoor shopping centre. Access from ground floor of centre is by escalator or lift and through wide open entrance into long bar area with large windows to the side overlooking the Green, from where the external neon lit signage can easily be seen. Decorated in typical style with fancy red and green carpets, a mixture of tables, chairs and 'counter' seating, reddish-brown walls and pastel green ceiling, spidery lighting and chandeliers and potted plants. No smoking/seating area at end. Named after the Central London Railway or 'tuppenny tube' (now Central Line) which reached Shepherds Bush with a station opposite the pub opened by the Prince of Wales (later Edward VII) in 1900. Food, disabled WC. Open all permitted hours.

## PUBS CLOSED OR CEASED SELLING REAL ALE

## CENTRAL

**EC1, BURGUNDY BENS**. Renamed **HONKERS**, now an 'American Bar & Diner', formerly a Davy's 'wine bar' pub. H removed. Sells keg Budweiser for the discerning drinker - does the new name reflect its effects? (E13)

**EC1, LEOPARD**. Free House. Now demolished and luxury flats under construction on the site. (E19, U75, U112, U157)

**EC2, BUTLERS HEAD.** Ex-Bass, demolished and site absorbed into new office development. (E30, U151)

**EC2, CHARIOTS.** Free House, closed and absorbed into the men's 'spa' of the same name, of which it formed a part. (U132)

**EC3, TIGER TAVERN.** Ex-Bass, demolished to make way for new office development. (E43)

**WC1, OARSMAN.** S&N, now absorbed into office redevelopment of the whole building block. (W47, N26, U163)

**WC1, THREE CUPS.** Young, closed, disposed of and building work under way. Rumoured to be under conversion to a wine bar. The probable loss of another characterful pub – outcome to be confirmed. (W51, U67, U73, U78, N31)

## EAST

**E1, COLET ARMS.** Inn Business, closed. (E63, U71, U147, U166)

**E3, HAND & FLOWER.** Ex-Whitbread, H removed. (E90)

**E3, VICTORIA.** Wells, H unused, nitrokeg Bombardier on creamflow only. (E93, U79, U108)

**E4, PRINCE OF WALES.** Six Continents, no real ale. Now branded as part of the 'Arena' chain. (E96)

**E11, D LAFFERTYS & SONS,** 34/36 High St, Wanstead. Renamed **BAR ROOM BAR.** Punch (ex-Taylor Walker), H removed. Formerly **CHURCHILLS** and **CLUTTERBUCKS.** Note correct address, contrary to publicity material. (U90, U101, U113, U136)

**E15, CORONET.** Free House, closed and boarded up. Formerly **LORD HENNIKER.** (E154, U108, U113, U117, U126)

**E15, YATES'S WINE LODGE.** Yates's, H removed. (U152)

## NORTH

**N4, MANOR HOUSE.** Ex-Watney, closed. (N75)

**N8, WELLINGTON.** Renamed **CATCH 22,** S&N, H removed. Now a predominantly gay bar. Listed in error under N22 in N guide. (N157, U109)

## SOUTH WEST

**SW1(B), LOWNDES ARMS.** Innpreneur. Confirmed converted to a private dwelling c1999 after planning permission from Kensington & Chelsea Council, with not a trace of its original use now apparent. The sad loss of an irreplaceable and historic Belgravia pub in the face of opposition by locals at the time. (SW38, U141)

**SW1(B), MUSE,** 1 Kinnerton St. S&N. Now converted to office use. Formerly **HORSE & GROOM.** (SW38, U138, U158)

**SW1(B), TATTERSALLS TAVERN.** S&N. Now simply **TATTERSALLS** (although 'Tavern' retained on hanging sign), H removed. Now badged as part of 'Original Pub Co' chain with large windows, cream décor etc. (SW40)

**SW13, ROSE OF DENMARK.** Free House, converted to fish and seafood restaurant named **Gouramys.** A small bar is retained but only for restaurant customers. The disastrous loss of a current 2003 *Good Beer Guide* pub and CAMRA Richmond & Hounslow Branch *Pub of the Year* for 2001 and 2002. We can ill afford the loss of such community pubs which are becoming increasingly rare in London. Another victim of the ludicrously weak planning regulations that, since the Thatcher government 'simplified bureaucracy', have allowed change of use from a pub to a restaurant without the need to apply for permission. As with many of Thatcher's policies, there is no indication that the current government intends to change matters. In these circumstances, the most profitable use takes precedence and the value of the pub to the local community is not tested. What hope is there for the future of the pub if places such as this, with the reputation for real ale and the support of CAMRA over the years, can be lost without the opportunity for the local community to have a say? (SW95, U136)

## WEST

**FELTHAM, LOCOMOTIVE.** Ex-Watney, demolished c1998 but not previously reported. (W100, U90)

## OTHER CHANGES TO PUBS & BEER RANGES

### CENTRAL

**EC1, BIERODROME.** Renamed **CLERKENWELL (THE)** in early 2002. Now a Free House/bar/dining room and sold on by the Belgo chain. Still no real ale and no longer specialises in Belgian beer. (U156)

**EC1, GUNMAKERS ARMS.** Now simply **GUNMAKERS.** Beer range reduced. (E17, U165)

**EC1, HOPE.** Now Unique, ex-Inntrepreneur, but retaining Young's signage and beers. (E18, U83, U158)

**EC1, NEW MARKET,** -beers listed; +Adnams: Bitter; +Worthington: 1744. Formerly **FROG & FIDDLE** for a while. (E21, U83, U121, U152)

**EC2, FOX,** -beers listed; +Wells: Bombardier.

# CAPITAL PUBCHECK - UPDATE 169

(E31, U66)

**EC2, HOGSHEAD**, 26 Throgmorton St, -beers listed except Adnams: Bitter, Boddington: Bitter and Fuller: London Pride; +Hook Norton: Old Hooky. Much reduced range, as appears to be the case now in most Hogsheads. (U153)

**EC2, PRINCESS ROYAL**, -beers listed except Flowers: IPA; +Fuller: London Pride; +Wadworth: 6X; +Wells; Bombardier. (E35)

**EC2, THROGMORTON RESTAURANT**, 27B Throgmorton St. Now simply **THROGMORTON**, although 'Restaurant' name retained in stonework. -beers listed; +Fuller: London Pride. Note correct address. (E36, U69, U70, U151)

**WC1, BLUE LION**. Opens until 1am Mon-Fri. (W45, U98, N18, U117)

**WC2, INTERVAL (THE)**. Renamed **BAR INTERVAL**. (U168)

## EAST

**E2, DUKE OF YORK**. Renamed **YORKIES** (E80, U101)

**E2, OLD AXE**, -beers listed; +Courage: Best Bitter. (E83)

**E3, PALM TREE**, -Flowers: Original; +guest beer (e.g. Robinsons). (E91, U108)

**E4, WISHING WELL**, -Usher: Best Bitter;

+Greene King: IPA. (U140)

**E10, WILLIAM THE FOURTH**. Should read **KING WILLIAM THE FOURTH**. -Sweet William beers (brewery currently closed owing to lack of brewer); +range of beers from microbreweries, including a mild. (E125, U85, U109, U130, U157, U158)

**E15, RAILWAY TAVERN**. Opens 6.30-8.30am Mon-Fri in addition to normal hours. (E154, U83)

**E17, COCK**. Now owned by Punch, ex-Taylor Walker. (E166, U168)

**ILFORD, ROSE & CROWN**, -beers listed; +Adnams: Bitter; +Draught Bass. (X73)

## NORTH

**N5, GROSVENOR ARMS**. Renamed **SNOOTY FOX**, -Courage: Directors Bitter. (N79)

**N14, WELCOME INN**. Renamed **BAMBORA**, an Australian bar/restaurant, still no real ale (contrary to erroneous entry in U168 - see 'Corrections' below). (N119, U162)

## NORTH WEST

**NW1, PEMBROKE**. Free House, now owned by Barracuda.. (N171, U156, U160)

**NW1, QUEENS**. Young's pub now run by Geronimo Inns. (N173)

## APPLICATION TO JOIN CAMRA

I/We wish to become members of the Campaign for Real Ale Limited and agree to abide by the Memorandum and Articles of Association of the Campaign.

Name(s) \_\_\_\_\_

Address \_\_\_\_\_

Postcode \_\_\_\_\_

Signature \_\_\_\_\_ Date \_\_\_\_\_

I/We enclose the remittance for individual/joint membership.

	Individual Annual	Joint Annual	Individual Life	Joint Life
UK and EEC	£16 <input type="checkbox"/>	£19 <input type="checkbox"/>	£192 <input type="checkbox"/>	£228 <input type="checkbox"/>
Rest of the World	£20 <input type="checkbox"/>	£23 <input type="checkbox"/>	£240 <input type="checkbox"/>	£276 <input type="checkbox"/>
Under age 26	£9 <input type="checkbox"/>	Date of birth _____		
Unemployed/Disabled	£9 <input type="checkbox"/>			
OAP	£9 <input type="checkbox"/>	£12 <input type="checkbox"/>	£108 <input type="checkbox"/>	£144 <input type="checkbox"/>

Send your remittance (payable to CAMRA Ltd) to:  
Membership Secretary, CAMRA Ltd, 230 Hatfield Road, St Albans, Herts AL1 4LW





## CAPITAL PUBCHECK - UPDATE 169

**NW4, CHEQUERS.** Former 'Noble House' pub now owned by local conglomerate, previously S&N. (N193, U153, U162)

### SOUTH WEST

**SW13, BRIDGE TAVERN.** Now simply **BRIDGE**, -beers listed; +Greene King; Ruddles Best Bitter; +Wells: Bombardier; +guest beer. Now a Free House 'pub and dining room', ex-S&N. (SW93)

**SW13, SUN INN.** -beers listed except guest beer; +Adnams: Broadside; +Fuller: London Pride. (SW95)

**SW15, SPENCER ARMS.** Renamed **PUTNEY PAGE**, -beers listed except Courage: Directors Bitter; +Fuller: London Pride; +Wells: Bombardier. Now a Front Page Free House, ex-S&N. Refurbished in open plan style with cream décor, red pillars, green stone bar and pine furniture. Thai menu. (SW104)

**SW16, GREYHOUND.** -beers listed; +Jennings: Cock a Hoop; +Ridley: Old Bob; +Theakston: Old Peculier. Renewed interest in real ale at this former brewpub. (SW105, U131, U153)

**MITCHAM, RAVENSBURY ARMS.** -beers listed; +Draught Bass; +Fuller: London Pride; +guest beer (e.g. Batemans). Now badged as part of Six Continents Ember Inns chain after

refurbishment. Children over 14 welcome only if eating with an adult. (SW147, U146, U149, U151)

### WEST

**HOUNSLOW, HARVEYS IN THE TOWN.** Renamed **LARKIN INN**. Now a Barracuda pub, ex-Ambishus. Formerly **ROCK & FODDER**, **NOBLE HALF** and **MUSWELLS**, originally **ROYAL GEORGE**. (W128, U90, U101, U137, U151, U152)

**HOUNSLOW, SHIRE HORSE.** -beers listed; +'Brakspear': Bitter. (W128, U45, U67, U71, U105, U141)

### CORRECTIONS TO UPDATE 164

#### NEW PUBS ETC.

**EC2, CHAMBERLAIN** should read **EC3**.

### CORRECTIONS TO UPDATE 167

#### NEW PUBS ETC.

**EC3, BOISDALE OF BISHOPGATE.** Should read **EC2**.

**E15, TOBY TAVERN.** Should read Reverted to **PARK TAVERN**

#### PUBS CLOSED ETC.

**E13, PRINCE OF WALES.** Should read: still closed and boarded up.

# The Brewery Tap

*John and Heather welcome you to the Brewery Tap.*

## Five rotating Cask Ales

Guests soon to appear include

Bank Top, Cottage, Holts, Rebellion, Slaters & Hogs Back and now we often stock mild ale.  
New lunchtime menu. Genuine home-cooked food.

Traditional Sunday Roasts 12 - 5.00

Wednesday Night is Tapas Night

Open all permitted hours

Nostalgia Juke Box

Fish 'n Chips & Football every Monday

68 High Street, Wimbledon Village, SW19

(10 minutes from Wimbledon station) 020 8947 9331

Bring  
this  
advertisement  
for a FREE  
half-pint of  
Real Ale  
(your choice!)

**N7, GALLAGHERS.** Formerly ALBION ENFIELD (EN1), PLOUGH. Address is 105 Turkey St.

**SW16, SUSSEX.** Should read: closed and to let for retail/showroom. Formerly BRASS FARTHING

### OTHER CHANGES ETC.

**EC3, JAMAICA WINE BAR.** Should read JAMAICA WINE HOUSE

**WC2, THEODORE BULLFROG.** Should read: Brakspear seasonal beer. Formerly ST MARTINS TAVERN

**N12, WISHING WELL.** Delete (N113) from refs.

**N14, FISHMONGERS** Should read FISHMONGERS ARMS

**NW8, CROCKERS FOLLY.** Refs should read (N213, U142, U152)

**SW9, KELLYS.** Formerly DORSET ARMS.

**HAMPTON HILL, JENNY LIND.** Should read: ex-Inntrepreneur

### CORRECTIONS TO UPDATE 168

#### NEW PUBS ETC.

**EC3, ASSEMBLY (THE).** Should read: opened October 2002. Run by Lewis & Clarke (as BAR INTERVAL, WC2)

**SEVEN KINGS, O'GRADYS.** Add: No real ale.

**N19, SALTBAR** (now ALL POINTS WEST). Add: No real ale. Formerly RAILWAY HOTEL COULDSON, SMUGGLERS INN. Opened September 2001

#### PUBS CLOSED ETC.

**E16, ROUNDHOUSE.** Should read: ROUND HOUSE (two words).

**N14, WISHING WELL.** Delete entry - see N14 WELCOME INN under 'Other changes' in main listings above

**NW1, HARWOOD ARMS.** Should read: HARMOOD ARMS

**SE1, SPANISH PATRIOT** (now RUBY LOUNGE). Now a Free House, ex-Whitbread.

**CROYDON, DUKES HEAD.** Refs should read (3SE241 etc)

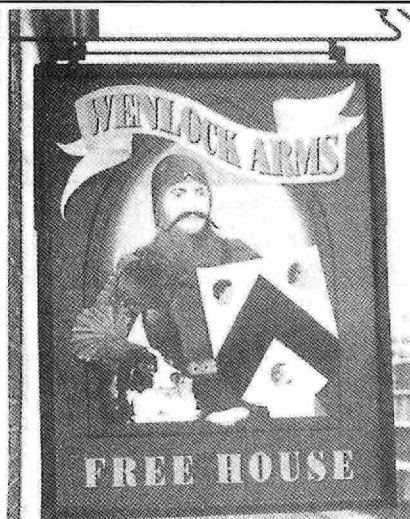
### OTHER CHANGES ETC.

**W1(S), KING OF CORSICA** (now ENDURANCE). Now a Free House, ex-Bass

**E2, ROYAL ALFRED** (now NU POQODI). Is a Free House.

**N4, OLD DAIRY.** Ref should read (U130)

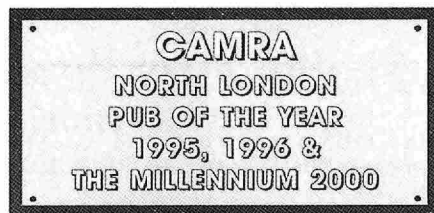
**NW3, KING WILLIAM IV.** Refs should read (N188, U152)



*A genuine Free House featuring a selection of the very best in Cask Ales, Traditional Cider and Perry*

*Steve & Will wish all our customers old and new a Great Christmas*

- Mild always available
- La Trappe Trappist ale & Bitburger Pils both on draught
- Function room free to CAMRA members
- Thursday night is Quiz Night
- Jazz piano Sunday afternoons
- Jazz/Blues every Friday and Saturday evening
- Open daily from midday



**26 Wenlock Road  
London N1**

**020 7608 3406**

Nearest Tube stations are Old Street (exit 1) and Angel. Wenlock Road is off City Road via Windsor Terrace  
<http://www.wenlock-arms.co.uk/>

## CASK MARQUE UPDATE

An independent scheme jointly funded by participating brewers and retailers, the Cask Marque recognises excellence in serving cask ale. The award is made to a licensee, who has to pass two unannounced inspections with assessors sampling beers checking temperature, appearance, aroma and taste. Twice yearly inspections continue, with additional random inspections triggered by customer comment. Reader's vigilance will be valuable! Visit the Cask Marque website at [www.cask-marque.co.uk](http://www.cask-marque.co.uk) for more information.

### ADDITIONS

#### CENTRAL

**EC2, WHITE HART**, 121 Bishopsgate. Six Continents. (E36, U64, U67)  
**W1(F), MARQUIS OF GRANBY**, 2 Rathbone St. Six Continents. (W29, U74, U92)  
**W1(S), CARLISLE ARMS**, 2 Bateman St. Six Continents. (W41)  
**W1(S), CROWN**, 64 Brewer St. Six Continents. (W42, U90)  
**W1(S), DOG & DUCK**, 18 Bateman St. Six Continents. (W42, U93, U150)

#### EAST

**E3, MATCH MAKER**, 580/586 Roman Rd. Wetherspoon. (U160)

#### SOUTH EAST

**SE1, OLD THAMESIDE INN**, Pickfords Wharf, Clink St. Six Continents (SE28, U105, U151)  
**BELVEDERE, VICTORIA**, 2 Victoria St. Punch. (3SE207, K32, U151)  
**BEXLEYHEATH, LLOYDS No1 BAR**, Market Place. Wetherspoon. (U166)

#### WEST

**HEATHROW AIRPORT, WETHERSPOONS**, Terminal 2 (Landside). Wetherspoon. (U167)

#### DELETION

*Pubs may be deleted owing to change of licensee, failed inspection or decision by the licensee or sponsor to cease participation in the scheme.*

**W7, DOLPHIN**, 13 Lower Boston Rd. Enterprise Inns, formerly WHITE HART. (W79, U78, U120, U164)

Over 2,300 licensees have the Cask Marque award. The beer in their outlets has been independently inspected for beer quality.

Visit the Cask Marque Website

[www.cask-marque.co.uk](http://www.cask-marque.co.uk)

and download a regional guide.

Why not visit a brewery?

[www.visitabrewery.co.uk](http://www.visitabrewery.co.uk)

Cask Marque - for the licensee who serves the 'perfect pint' of cask beer.

**The Cask Marque Trust**

**Seedbed Centre, Severalls Park,**

**Colchester,**

**Essex CO4 9HT**

**Tel: 01206 752212**



## LAGRAD LONDON GROUP

LAGRAD (Lesbian and Gay Real Ale Drinkers) is a group of CAMRA members extending the Campaign to the lesbian and gay scene. All are welcome to all events. Contact the group convenor on [LAGRAD@ukgateway.net](mailto:LAGRAD@ukgateway.net) or visit the LAGRAD website, [www.goldings.demon.co.uk/queerale/](http://www.goldings.demon.co.uk/queerale/)

**February - Wed 5 (7pm)** Monthly social. King's Arms (upstairs bar), 23 Poland St, W1 (020-7734 5907). - **Tue 18** Two pub bus crawl: (6pm) ? Way to Heaven, 7 Duncannon

St, WC2, (020) 7930 8312. Usually has Fuller's London Pride in good nick; (7.30) Queen's Head, 25-27 Tryon St, SW3, (020) 7589 0262. Courage GBG entry.

**March - Wed 5 (7pm)** Monthly social. King's Arms (upstairs bar), 23 Poland St, W1. - **Thu 20** Croydon crawl: (6pm) Bird of Pride, Sydenham Rd, 20 mins north west of East Croydon Station, just over the railway bridge, then along the path by the railway to (7.30) Goose and Carrot, 128 Wellesley Rd.

# THE WINE COMPANY

93/95 STOKE ROAD, SLOUGH

BUCKS SL2 5BJ

TEL: 01753 797579 FAX: 01753 797578

## West London's finest range of Specialist Ales.

British Ales from Orkney, Isle of Arran,  
Scotland, Shetlands.

Beers from Bathams, Oakham, Itchen Valley.

Cornish and Devon beers.

Yorkshire beers from Cropton, Rudgate etc.

The very rare Cauldron Snout from High Force.

Darwin Richmond, organic and fruit flavoured beer.

Bavarian Weizen, Festival beers, Bock beers.

Classic German Pilsners, Schlenkerla Rauchbier

Trappist and Abbey beers from Belgium.

Lambic Fruit beers.

Belgian Speciality beers.

◆ Glasses ◆ Delivery Service

◆ Beer Finding Service

◆ Open 7 days a week



PRODUCE THIS ADVERTISEMENT  
AND RECEIVE...

A FREE BEER GLASS  
WITH EVERY PURCHASE!





## BOTH ENDS STILL BURNING

Almost five years ago, I wrote a piece for this inestimable organ based on a pub crawl of Hampton Wick. Entitled Both Ends Burning, it looked in detail at the pubs of the village on the Middlesex bank opposite Kingston as they were then. Five years is a long time and a lot of water has flowed under Kingston bridge...

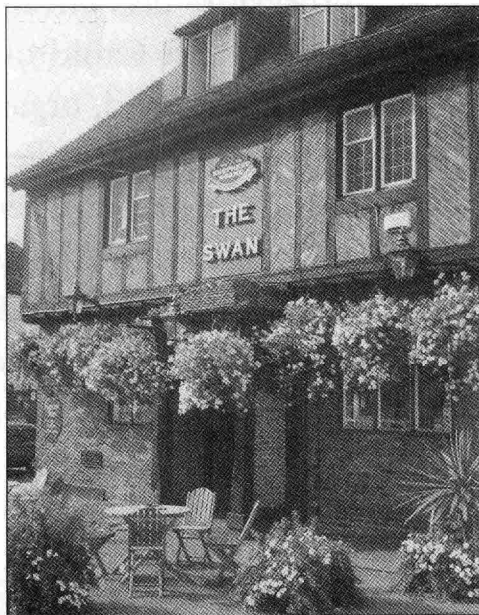
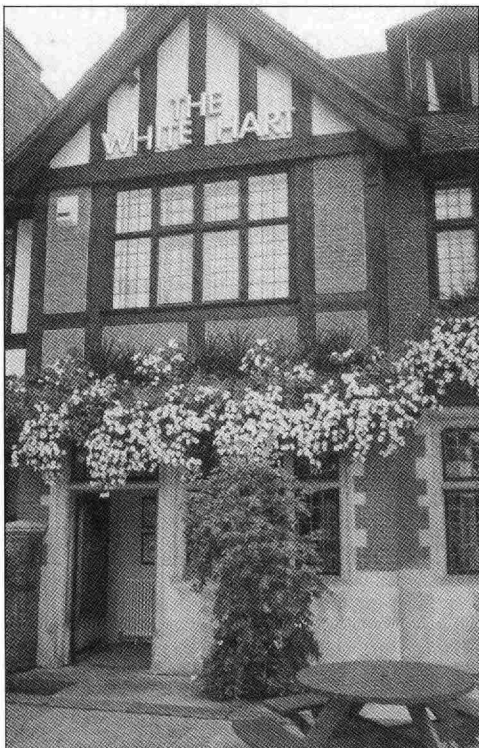
'The Wick' is a place that is close to my heart. In the last eight years or so, I've had some truly great times there and, despite being four miles from my home, it's the place I'm often found in when enjoying a few bevies.

For a small place, it has quite a few places to enjoy a beer. For the sake of this piece, I shall take our starting point as the foot of the bridge on the Hampton Wick side of the river. To your left is the now-closed Old King's Head. This closed as a (former Courage) pub some years ago and was briefly an art gallery. It now appears to have relinquished that role and is currently for sale.

Back across the road and times have also changed at the White Hart. Still owned and managed by Fuller's, it used to be just a pub. I say 'just a pub' as it was a pretty big place with a separate function

room around the back. Run with great success by Sid and Eilish from Tipperary, it was a boozers' pub in every sense of the word. Sid and Eilish left the Chiswick brewery a couple of years ago and the place passed to holding management. The brewery then decided to develop the pub and how! Fuller's are gradually developing their hotel estate and the White Hart is now a large modern hotel with a small-ish bar on the front. It's clean and rather corporate but the ale is in superb form. A varied food menu is available and it's a comfortable is slightly bland place compared to its former existence. The front patio is popular in the summer.

Going left outside the White Hart and we're at our next stop within thirty seconds. I told you it was a small place! The Swan was once a run-down Courage house that staggered on for years before succumbing to the advances of Shepherd Neame. The Faversham brewery completely gutted the place and reopened it as a stripped pine bistro bar with traditional ales making an incongruous appearance



on the bar. Fancy some Spitfire with your sun-dried tomato and goat's cheese salad? You've come to the right place! Apart from the ales, draught Hoegaarden makes a rare appearance for the area and is great nick. Live music is staged on an occasional basis but don't expect a vibrant or atmospheric place. There is a naked man on the wall in the ladies apparently...

Fancying the Swan is the recently reopened Foresters.

## BOTH ENDS STILL BURNING

A Taylor Walker pub that had seen better days, the beers served there occasionally bordered on the undrinkable. The Foresters shed its old image in the summer as new management took over and the place had a bit of a facelift. Out went the carpet, pool table and twin TVs and in came a light, bright decor and bare boards. The accent is now more on (reputedly excellent) food but the ale side has improved too with Greene King IPA and Tetley Bitter (among others on a rotation basis) on sale in moderate nick.

Turn left outside The Foresters and it's a short walk to The Rose & Crown, a free house. Originally a Watney pub (it still bears the signage), the bar area is small with a pool table in a corner, one of only two in the village, and an open-plan seated area. The pub regularly shows live sport on a big screen but the real attraction of 'The Rose' is the small matter of a theatre upstairs! Staging fringe theatre and previously a venue for live comedy, the theatre is a vibrantly creative space but is now threatened with closure if the pub itself is redeveloped. The bar continues to sell Wells' Bombardier and occasionally Young's Special in moderate form. 'The Rose' retains its own clientele on the whole in a community which regularly tours the village for a few beers on a night out.

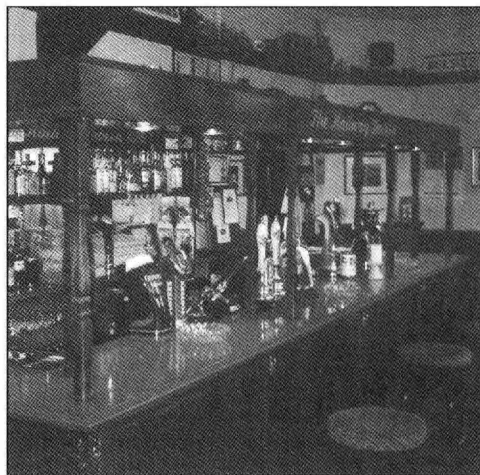
Hitting the High Street again and the final stop on our tour is just a few moments away. Handy for the rail station and beside a bus stop, Stryker's Railway is a free house of some distinction. I must declare an interest here: as I may've said in these pages in my previous piece, I've had some killer times within the Railway's walls. My friend (and the Railway's former guv'nor) Mick Jordan left the pub for a quieter life nearly four years ago and after a period of

holding management, it was taken on by the charismatic John Stryker. An intriguing combination of Lancastrian wit and Louisianan style, John runs a tight ship but is a captain who works hard to give his customers the space to enjoy themselves. The pub itself is basically C shaped with a pool table, a fine garden and dual TVs for sport. Again the traditional carpet and flock upholstery has been ditched for bare boards, leather sofas and window blinds, giving it a homely, 'colonial' feel. John is a lease holder with the Unique Pub Company and is tied on beer to ScotCo's Supply Line.

Apart from ScotCo's own ales - which do not feature at Stryker's - John is free to choose from a

wide list including ales from Greene King, Young's, Fuller's, Adnams and a few more besides. The pub has Cask Marque accreditation and the ales are in great form. Add to this a loyal clientele of all ages and walks of life who enjoy a good session of singing and dancing to the jukebox (I kid you not) and the occasional live soloist or duo and you've a place which revels and truly deserves its reputation as 'the Wick's premier traditional pub'. John has plans to do some rebuilding work and the future looks bright for a pub which has a lot going for it. By the way, Mick Jordan still drinks in his old pub and I still reckon his Adnams' Southwold Bitter was great!

*Al Ferrier*



## WHAT'S IN A NAME?

Until the early 19th century the vast majority of Britain's populace was rural, as a result of which many pub names from the 15th century onwards reflected country life.

The Barley Mow (Stack) was an early sign that beer was on sale; barley is of course the major ingredient in beer. The Wheatsheaf derives from the end of the harvest, always a time for celebration. Farm workers are remembered in numerous examples of the Jolly Farmer and the Farmer's Arms, while the title of the Labouring Man (Sussex) is unique. The Shepherd appears in various versions such as the Shepherd & Dog (Sussex). The Drovers deserve a mention as they took the live produce to market.

The Dog appears frequently, though the Dog & Bacon (Horsham) is thought to be a corruption of the local pronunciation of 'Dorking Beacon', a feature visible in the distance when the pub was built. The Dog & Bell (Deptford) gained its name by chance. When it was built the only etched windows available had been prepared for pubs with those two names with their images; thus fate decided its unusual title.

The Plough, the Harrow and their combination are frequent, though the former can appear as the constellation. The unusual sign of the Plough at Clapham Junction is a mosaic showing both implement and stars.

Not unconnected, though frequently seen, are the Windmill, the Jolly Miller and, less so, the Watermill (Cumbria). The Manger (Essex) is unique, though it is seen jointly with the Rack. Motive power on the farm is commemorated by the Sussex Ox, later supplemented and eventually replaced by the Horse, Black, White (often heraldic), Bay, Spotted and Grey. In that context is the Yorkshire Grey; other specific breeds include the Suffolk Punch, Clydesdale and Shire Horses (Berks). All descend from the Norman knights' warhorses. Their smaller cousins are represented by the Welsh Pony (Oxford) and the Shetland Pony among others, while one fictional pony was named the Maltese Cat (Roehampton). Ponies were used for transporting goods, along with the Pack Horse and its Pack Saddle.

The Bull, which may have heraldic or ecclesiastical origins, is also represented with a number of colours in its name, such as Black and Pied, while the Bull's Head and Bull & Butcher often signified the proximity of a shambles. The name is also illustrated on signs as the centre of a dartboard or its ancestor, the archery target. The Bull Ring (Ludlow) refers to the ring in the ground by which the unfortunate creature was tethered to be baited by dogs prior to slaughter - this was said to tenderise the meat, and at one time it was a legal requirement. The Dog & Bull (Croydon) was the site of such activity. Cows also

appear variously coloured: Spotted, Dun, Red; the last refers in Wales to the Glamorgan Red, usually used as draught cattle. The Calf deals with their young.

Sheep rarely appear, though the Fleece and the Woolpack commemorate the importance of the wool industry. Not to be forgotten is the Lamb, often of religious origin. The Ram is essential to the latter's propagation, although that at Farncombe, Surrey (a cider pub with no beer) is named after a pump for raising water. Pigs are usually commemorated by breed, such as the Old Spot (Dursley, Glos), while the Sow & Pigs may refer to iron-founding, as in pig iron. The Goat sometimes appears as the Goat in Boots, an unlikely concept, while the Goat Major was for a while the name of a pub near Cardiff Castle, whose sign illustrated the military mascot with his handler.

No farmyard is complete without the Hen & Chickens (Abergavenny) and the Cock. The latter can trace its origins back to Roman times, while the Cock & Bottle was an old name for a take-away, the cock in that context being the spigot by which the drink was drawn from the cask. The Rabbit, introduced by the Normans, is still bred for food, and the Black Rabbit (Arundel) is the only one of that name. The Hare, its relative, was native to Britain and will feature again under the Sports theme.

This has of necessity been limited largely to agricultural topics and is by no means a full list. The place names refer in most cases only to some examples that readily come to mind. Animals connected with hunting will (perhaps controversially) be incorporated with sports. Animals normally associated with the sea, fish and birds will be dealt with at a later date, and heraldic and fabulous beasts have already been discussed.

More next time!

*Martin Smith*

Advertise in next month's  
**LONDON DRINKER**

from only £45 (quarter  
page - all inclusive)

Call Peter Tonge now on

020 8300 7693

**A**propos Messrs. Ferrier and Bade's article in the October/November *London Drinker* regarding availability of real ale in Eire, I have 'been across the water' a number of times recently. Whilst Brian and Al predict that the next ten years will see more micros, and I sincerely hope they're right, they have not mentioned some of the other micros that are now producing beer in various forms throughout the Republic. As for the prediction that 'the likes of Dwan (Tipperary Brewing Co) and Porterhouse will make serious inroads into Guinness sales', well it ain't gonna happen. The vast majority of the citizens of Eire have been conditioned to the likes of Guinness, Smithwick's, Carlsberg Lager and Bulmer's Cider for far too long and, from the people that I have talked to, the majority are not aware of or don't even care for alternative products. Even some fellas that I talked to in one bar, who had been in England, admitted that '*Oi tried dat real ale stuff but couldn't get on with it*'.

Apart from city centre bars, drinkers do not see 'non-standard' products. Availability is mainly in bottled form in off-licences and then very few and far between. It will be a long and arduous struggle but I agree the likes of Porterhouse, Messrs Maguire and Biddy Early's have done an excellent job and have been well patronised when I have visited them. Incidentally, Biddy Early's was not the pioneer of micro-brewing in Eire. Two outfits called Dempsey's in Dublin and Harty's in Co. Wicklow opened in 1982/3 but have long since closed. The only available bottled conditioned ale was, I believe, 'Phoenix Ale' brewed by Cherry's in Waterford but apparently that stopped being produced in April last year.

Anyway, what of the others. From research it seems that at the same time as Biddy Early's started in 1995, the Irish Brewing Company started in Newbridge, Co. Kildare, brewing only one bottled natural lager, No.1 Brew. Another single-brew micro, and again a bottled 'Natural Irish Lager', is produced by the Kinsale Brewing Co. which opened in 2001 on the site of the old Landers Brewery in Kinsale. I cannot say what they taste like as I've never found their products.

Two other micros, both in Co. Meath, are the Celtic Brewing Co. and the Balbriggan Brewing Co. Again, info is sparse and I have only seen their bottled wares. CBC produce Finnians Pale Ale, Irish Red and Lager, whilst BBC, as far as I'm aware, only produce Ballymaguire, another full malt natural lager.

Another new (1998) micro is the Franciscan Well Brewery in Cork City - again one I tried in vain to find in bars. Their publicity says they produce lager

(Rebel County 4.3%), ale (Round Tower Red 5%), and a stout and a wheat beer all brewed using natural ingredients and with no additives or preservatives, but gives no listing of outlets. Are they still in existence?

The two largest micro-breweries are the Dublin Brewing Co. in Dublin (1996) producing Darcy's Dublin Stout 4.3%; Revolution Red Beer 4.3%; Maeve's Crystal Wheat Beer; and Wicked Apple Organic Cider, and the Carlow Craft Brewery in Carlow Town (1998) making Molins Red Ale; Curim Gold Celtic Wheat Beer and O'Hara's Celtic Stout (Champion Stout and Gold Medal Winner), all at 4.3%.

Both undertake brewery tours with sampling sessions and you can purchase presentation packs of their range of bottled beers. Availability for bottles and draught is reasonably good in their areas apart from Carlow's which has only one outlet for its draught beer and yes, you guessed it, it was not on when I was there.

All of their products are good, particularly the stouts, and although not bottle conditioned are well worth hunting out. The Dublin Brewing Co. claim that they take their water from the reservoir that Guinness used to use before Guinness decided mains water was good enough for their brewing process as they would pasteurise all of their products. (Incidentally, for trivial pursuit fans - the Dublin Brewing Co. is the first independent brewery in Dublin since Findlaters Brewery near Mountjoy Square, Dublin closed in 1949 - nearly a half century monopoly for Guinness!)

By the way, don't get caught out by bottled McCardle's Ale now being seen in some bars in the South. Look at the label, yes it's same printing font as the Guinness label and is imported bottled fizz from McCardle's Cambricville Brewery in Dundalk which is owned by Guinness or whoever owns Guinness these days. Talking of getting caught out, have a look at the official Guinness website [www.guinness.com](http://www.guinness.com). Apparently you can only look at the site if you are old enough to buy a drink in the country where you reside. How do they know?

Sláinte.

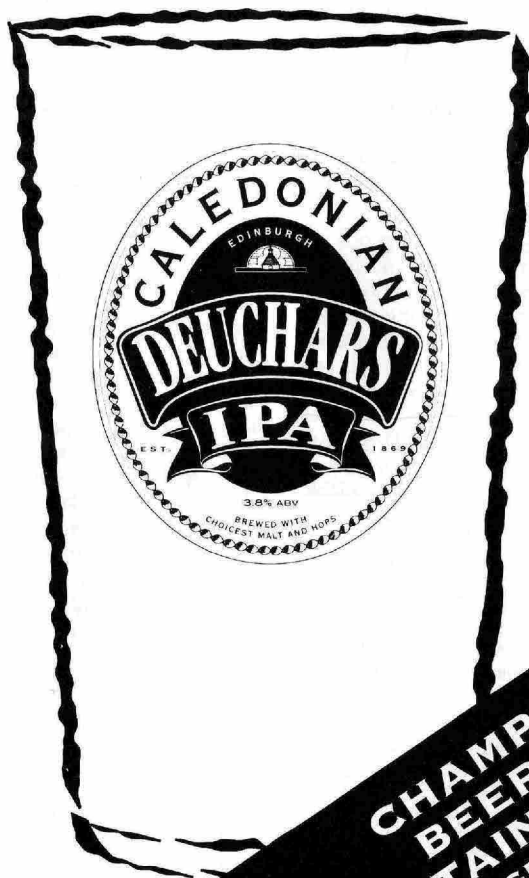
Steve Quiller

## PUTTING ON THE STYLE

Rejecting any speculation to the contrary, *What's Brewing* editor Ted Bruning assures us that beer writer Des de Moor really is Des de Moor and works for the Ramblers' Association magazine.



# YOU'RE DUE A DEUCHARS.



**CHAMPION  
BEER OF  
BRITAIN ~ 2002  
CAMRA GBBF, OLYMPIA**

**CALEDONIAN BREWERY, EDINBURGH**

## A CAPITAL GAIN

**H**oots mon! It's Auld Reekie! After our recent piece on Dublin's fair city, we thought it only fair to give some space to another capital city, that of glorious Edinburgh. Scotland did not let us down and a good time was had by all.

Edinburgh is a great real ale city. Cask beer is on sale in plentiful variety (for the most part) in nearly every bar and pub in the city. Edinburgh attracts visitors from all over the UK and abroad. If you have been for a sporting occasion, for some sightseeing or just a short break, you will know what we are referring to. It is a very pubbed city, i.e. everywhere you go you will never be far from one!

We decided not to write a definitive pub guide to the city - that would take far too long and there are some excellent dedicated guide books that tackle this very subject. Instead, we have visited some outstanding houses, both in the city centre and within a short walk or bus ride from it. It should be noted that, whilst Edinburgh is quite spread out as a city, bus and taxi fares are reasonable enough to make frequent use of them a good idea.

Our first port of call is Mather's, just off Princes Street. A relatively small, male-dominated one-room bar, Mather's is a veritable time capsule with its bare boards, sparse seating and etched mirrors. The pub stocks the city's big two ales, Caledonian Deuchars IPA and McEwan's 80/. "Eighty Bob" is a corporate version of a Scots 'heavy': dark, malty and a little thin, its reputation assured as it holds a place in the hearts of Edinburgh's drinkers akin to that which Guinness enjoys in Dublin. Deuchars is a different kettle of fish; rich, malty and with a grassy hop flavour, it is light enough to be a session beer and yet satisfying to make you seek it out in every pub in the city. The city's publicans know this!

In the suburb of Gorgie in the city's south west is our second port of call. A short bus or cab ride brings us to The Athletic Arms, known to all as The Diggers due to the proximity of the cemetery opposite. The pub is somewhat of a shrine to Heart of Midlothian FC whose Tynecastle Park ground is close by and is a typically Scots 'stand-up' pub in that seating is minimal to accommodate more drinkers, especially on a match day. To say that 80 Bob is the top-seller here is an understatement: they need seven pumps to cater for the demand! For those that are not struck on the merits of Eighty, The Diggers usually entertains a guest, which was Everard's Tiger on our visit. Thousands of Jambos

(Hearts fans; jam tarts = hearts) regard this place as a truly special part of the world and you can see why.

Like most football supporters, jambos have regular match day haunts as they visit one pub before the game and another after. A favoured pre-match house for those heading out from the city centre pop is Ryrie's on the corner of Haymarket Terrace and Dalry Road. Handy for Haymarket rail station and almost next door to the superb Caledonian Alehouse (with the full Caley range on, folks!) this is a place that hasn't changed much in many years. Eighty Bob is on here as it's an S&N house but fear not as Deuchars is also on sale, with both ales in great form.

Many visitors to the city head for the historical Royal Mile and this area is packed with great little boozers. The area virtually hums with vibrancy of a weekend. We made our way to an outstanding house, the Ensign Ewart. Dedicated to a hero of the Battle of Waterloo, the pub is a low-ceilinged but atmospheric gaff which fills up rapidly on a weekend night. Four ales are on including Deuchars and the excellent Orkney Dark Island and Tim Taylor Landlord. It hosts regular folk music but don't hold that against it! Seriously, it's the sort of place that once you've arrived and had a couple of pints makes it difficult for you to want to leave.

Tollcross used to be a village on the edge of the city but has long since been swallowed up by the metropolitan sprawl. Tollcross features two great pubs, both of which are listed in the *Good Beer Guide*. Cloisters is a converted

manse (vicarage) and attracts a wide clientele which includes a passing trade from the nearby King's Theatre. You can expect at least eight ales on here including the big two, but there's plenty of regional variation as well with Landlord, Harviestoun Bitter and Twisted and Dent Aviator in evidence on our visit.

Next door to the aforementioned theatre is Bennet's. What a gem this place is! The high ceiling and ornate bar back are really something to behold as is the collection of over thirty fine malt whiskies. Like Mather's, it's a small-ish place with etched mirrors on the walls and you don't need to ask us which ales are on! It's testament to Caledonian that they've overcome their adversities of the past (which include two fires) and produced such a winning range of beers. Deuchars recently collected the Champion Beer of Britain award for the second time and its widespread sale in Edinburgh has made it part of the life of the city.

*Al Ferrier & Brian Bade*



Some years ago I agreed to occupy some friends' youngsters for a day. No hardship - four under-14s were nothing compared to what I'd been used to in teaching and youth work. Rather than have them coming down to my house, some way from their home, and causing havoc in my bike-recycling workshop, I arranged to meet them at a pub in the village to brief them on the plans and await the reliable but infrequent bus. Half an hour was enough to do that and have a pint. The local steam railway (an hour and two bus rides away) was the agreed venue, as if I needed an excuse to go there!

Sitting at the bar, they got on with their cokes. The ten year-old, who had been intently studying the pumps, suddenly announced: '*Bitter! I like bitter.*' He repeated the speech three times more, putting the stress on a different syllable, going up and down the scale. Then the tone changed: '*UGH! Lager - Dad likes that!*' He came to the Guinness and couldn't quite get his tongue round the word. As he hadn't learned that lot from me, I decided to find out more, '*Which one do you like best?*' I enquired. Without hesitation he pointed one out; the blandest, most flavourless 'real' ale I've ever tasted, albeit popular in the area. He must be 16 by now. I wonder if his ideas have changed? Say no more.

Martin Smith

## Europa Beer Festival

Bank Holiday

May 1st, 2nd & 3rd, 2003

- ❖ Great 'live' entertainment
- ❖ Over 3 days
- ❖ 12 new beers
- ❖ Bar-B-Q
- ❖ Children's play area
- ❖ 1 mile from Hampton Court Palace

The Europa

171, Walton Road, East Molesey  
Surrey KT8 0DX  
Tel: 020 8979 5838

### DECEMBER'S ANSWERS

As promised, here are the solutions to the puzzles set in December's Idle Moments column.

#### NUMBER PUZZLES:

1. 12 Court Cards in a Pack
2. 100 Letter Tiles in a Scrabble Set
3. 7 Colours of the Spectrum
4. 462 Wheel Arrangement of a Pacific Steam Engine
5. 15 Men on a Dead man's Chest
6. 9 Aeroplanes in the Red Arrows Aerobatic Team
7. 224 Ounces in a Stone
8. 10 Green Bottles (Hanging On The Wall)
9. 40 Life Begins!
10. 32 Black Squares on a Chess Board

#### BREWERY ANAGRAMS:

1. MISLED RAGS - GRIMSDALES
2. BAD ROLE - OLD BEAR
3. T'MARS BAR - BARTRAMS
4. KNEAD ALL - LAKELAND
5. ALL AS WEED - SWALED ALE
6. L.T.RACEWEAR - CLEARWATER
7. CRY TORE - RECTORY
8. LOVED RACE - CORVEDALE
9. THROWN WET - WENTWORTH
10. NEAT MIME - MEANTIME

#### 5BY4:

1. Rock-A-Doodle-Do - Linda Lewis
2. Rock'n'Roll is King - Electric Light Orchestra
3. Rock the Boat - Hues Corporation
4. Rock and Roll Dreams Come Through - Meat Loaf
5. Rock With the Caveman - Tommy Steele
6. Rock'n'Roll Winter - Wizzard
7. Rock Bottom - Lynsey de Paul
8. Rock and Roll Music - Beach Boys
9. Rock DJ - Robbie Williams
10. Rock and Roll Waltz - Kay Starr

#### GENERAL KNOWLEDGE:

1. The "Cotton State" is Alabama
2. The place with a name that translates into "Fragrant Harbour"? Is Hong Kong
3. The missing member of this trio with Mary Wilson and Florence Ballard was Diana Ross. They were, of course, The Supremes
4. The famous daughter of actress Maureen O'Sullivan is Mia Farrow
5. You would find Willy Nilly, Bessie Bighead and Organ Morgan in "Under Milk Wood" by Dylan Thomas
6. The king of England who founded the Order of the Garter was Edward III (in 1348)
7. There are seven movements in Holst's *Planets Suite*. The Earth was deliberately excluded and Pluto was not discovered until 1930 - 14 years after it was completed.
8. The style of trousers named after the amount of extra material used by the tailor to create their particular baggy style was Plus Fours.
9. The name of the railway locomotive built in 1813 by William Hedley for Wylam Colliery in Northumberland was Puffing Billy.
10. Winston Churchill described Russia as a "riddle wrapped in a mystery inside an enigma"

## IDLE MOMENTS

**W**ell here we are again; Christmas is over and the turkey is well and truly curried - don't worry, it will all be gone by Easter.

As you know, I like to start each time with quotation which may or may not prove enlightening as we go through life. This time I have chosen a short one from Alfred E. Newman (if I've spelt that correctly - if not, who cares?) Of MaD magazine fame - how many of you are old enough to remember that estimable tome? Anyway it went something like:

*What, me worry?*

Anyway, enough of that. It's time for the number puzzles:

1. 9 S of B
2. 16 S and NBK
3. 45 L on the RT
4. 3 C in the F
5. 1956 Y of the MO
6. 30 P in a G of RU
7. 40 D from ES to AD
8. 6 F in a F
9. 180 DL is HWR the W
10. 33 IDC for F

And so without further ado we shall proceed to the brewery anagrams. How many of these do you recognise?

1. NO SHOUT
2. THUG ON ORB
3. STORE EGGS
4. THREAD ANT CART
5. REAL BARD BANGER
6. HE WANTED CHIRK
7. RODE WESTERN
8. 'ALLO KEW
9. RICE BOSS
10. COOKS R.C. TART

I decided to subtitle this month's 5BY4 "Calendar C\*\*p". Last year I had a desk calendar at work - one of those where you tear of a bit of paper bearing a silly aphorism every day. Well, this one also had a bit on each page to say in what year things were invented or discovered. I've chosen ten of these; see if you can deduce the year (from the second list) associated with each.

1. The first parking meters came into service, in Oklahoma City.
2. The first potato crisps were prepared at an hotel in Saratoga Springs, New York.
3. Power steering first appeared in the Pierce Arrow "Run-About".
4. The first non-stick pans were put on sale, by the French Tefal company.
5. American inventor Walter Hunt patented the

"dress-pin" or safety pin.

6. English teacher John Spilsbury invented the jigsaw puzzle.
  7. Blaise Pascal devised the first mechanical adding machine.
  8. Swiss engineer Georges de Mestral invented Velcro.
  9. Neon lighting was displayed for the first time, at the Pris Motor Show.
  10. The first passenger lift was installed, at the Palace of Versailles.
- A. 1642  
B. 1743  
C. 1767  
D. 1849  
E. 1853  
F. 1910  
G. 1926  
H. 1935  
I. 1948  
J. 1955

And so finally we come to the general knowledge bit. Owing to a shortage of time (Note the grammar there?) I have cheated and stolen the questions I used one month about twelve years ago (with the exception of one question which also came up in last time's number puzzles) - so here is a test of your knowledge (or it might be memory):

1. What book did Anna Sewell dictate from her sick bed?
2. What almanac will reach its 140th edition in 2003?
3. Which Country declared itself an independent republic on 17th June 1944?
4. Last year Hiram T Schwarzstein III (an American) was a Freshman; next year he will be a senior. What is he this year?
5. What is produced in a ginnery?
6. Where would you find a nave and a fellow?
7. How many breeds of draft horse are used in Britain?
8. Of which famous railway company did Daniel Gooch become the first Locomotive Superintendent?
9. Who wrote "Down and Out in London and Paris"?
10. In what city are they still building 1950's Royal Enfield motorcycles?

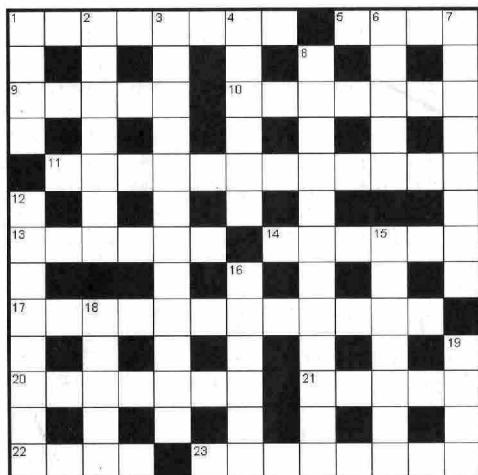
Well that's about it. I shall now let you return to sanity.

See you next time (unless you see me first).

*Andy Pirson*

# LONDON DRINKER CROSSWORD

Compiled by DAVE QUINTON



Name \_\_\_\_\_

Address \_\_\_\_\_

All correct entries received by first post on 26th March will be entered into a draw for the prize. Prize winner will be announced in the June London Drinker. The solution will be given in the April edition.

All entries to be submitted to:  
London Drinker Crossword  
25 Valens House  
Upper Tulse Hill  
London SW2 2RX

## SOLUTION TO DECEMBER CROSSWORD



## £10 PRIZE TO BE WON

### ACROSS

1. Employees or department head in town. [8]
5. Plans to return meat product. [4]
9. Change man to be decapitated. [5]
10. Crushes relative? [7]
11. Looks round model and entertains thoughts. [12]
13. Inordinate desire to live. [6]
14. Moderate anger. [6]
17. It may contain a few coppers. [12]
20. Little devil learning to beg. [7]
21. It's all right in a woman to call out. [5]
22. She can be seen in flannel lingerie. [4]
23. Followers of early Sumerian orators. [8]

### DOWN

1. Grasses up celebrity. [4]
2. So can't I dispute court cases? [7]
3. It's bound to be worth a lot of money. [5,7]
4. Take up again most of what Stanley did. [6]
6. Propose I get into office. [5]
7. Attempt to lie under cars giving service. [8]
8. We will shortly get a fine spring? Would you believe it! [4,4,4]
12. Priest doing his part. [8]
15. Aim to get the Post Office in the money. [7]
16. Worthless sailor caught in mid-stream. [6]
18. Geordie friend seen in the country. [5]
19. Exercise while producing vegetables. [4]

Winner of the prize for the October Crossword:  
Eileen Graves, Frinton-on-Sea, Essex

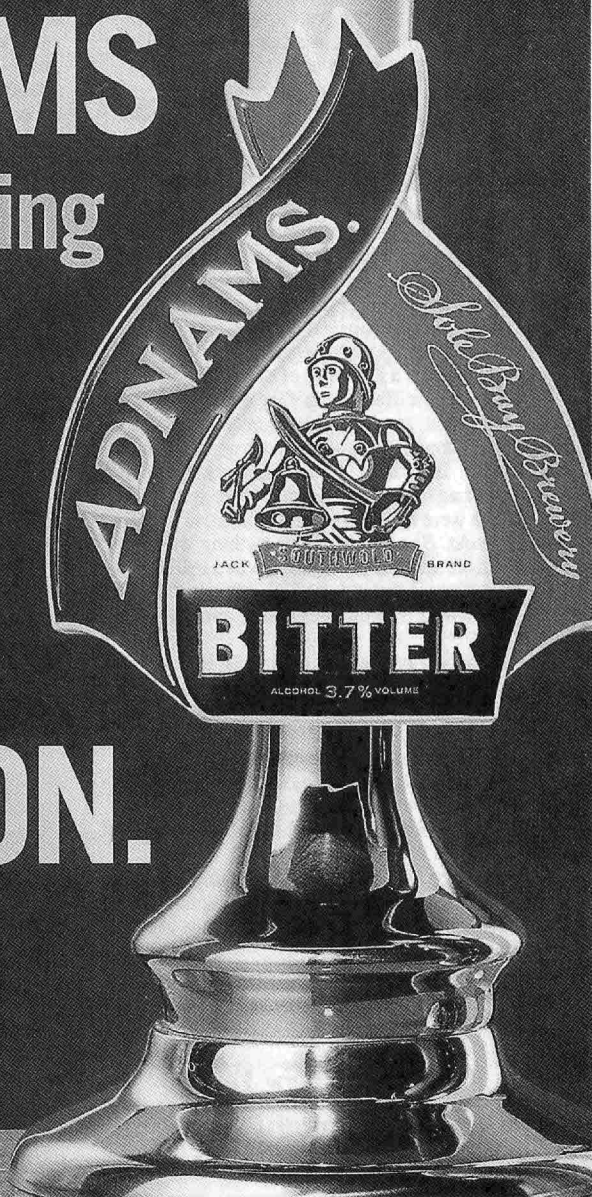
Other correct entries were received from:  
Tony Alpe, Pat Andrews, John Barker, S.J. Brown, Ben Burfutt, Eddie Carr, Chris Fran & a spotted dog, A.P. Comaish, Charles Creasey, Paul Curson, Robert Day, Dick & Clever Clogs Douthwaite, Arthur Fox-Ache, Paul Gray, J.E. Green, R.J. Green, Stuart Guthrie, Tarnya Haigh, John Heath, Graham Hill, William Hill, Sheerluck Holmes, Tom Kemp, Terry Lavell, Mike McHugh, Al Mountain, S. McQuaid, K.I. May, M.J. Moran, Pansy Potter, Rod Prince, Derek Pryce, Alf O'Coyle, M.S. Rew, Geoff S., Philip Sale, Dick Shunry, Armand Slyce, Beverley Smith, Bryan Smith, Steve of Cliftonville, Bill Thackray, Unemployed Representation, Tom Vickers, Tony Watkins, Martin Weedon, Sue Wilson, Yak, Peter Yarlett.



SEEK OUT  
ADNAM'S

at discerning  
outlets

ALL  
OVER  
LONDON.



# Hogs Back Brewery

**IT'S BACK!**

**For February**

**BLACKWATER**



# PORTER

*A bitter-sweet Traditional Dark Ale*

*Brewed with the finest Fuggles Hops*

**Ask for it at YOUR Local**

---

**..... and starting from March**

## 'Spring Call'

**A light, refreshing 4% Spring Ale**



**Manor Farm, The Street, Tongham, Surrey. GU10 1DE**

**Tel 01252 783000 Fax 01252 782328**

**[www.hogsback.co.uk](http://www.hogsback.co.uk)**

***Independent Brewers of the Finest English Ales***