The logo for LONDON CAMRA. The word "LONDON" is written in large, green, stylized capital letters, with a green arch over it. Below "LONDON" is a black circle containing the word "CAMRA" in white, bold, sans-serif capital letters.

30p



DRINKER



THE GREAT SPOON OF ILFORD
114-116 Cranbrook Road, Ilford

Photo by: Simon Fyffe

Vol 18

Produced by the London branches of the Campaign for Real Ale Ltd

No. 7

WHERE TO BUY LONDON DRINKER

The following is a list of all the current outlets for London Drinker of which the editors have been informed. Full addresses are only given where there are two pubs of the same name in the same postal district.

OUTLETS - EAST and SOUTH EAST PUBS

EC1 ARTILLERY ARMS
EC1 BISHOPS FINGER
EC1 MASQUE HAUNT
EC1 O'HANLONS
EC1 PHEASANT & FIRKIN
EC1 ROSEBERRY
EC1 SEKFORDE ARMS
EC1 SHAKESPEARE
EC3 SWAN
EC4 BLACK FRIAR
E1 LORD RODNEYS HEAD
E2 CAMDENS HEAD
E3 IMPERIAL CROWN
E5 PRINCE OF WALES
E8 LADY DIANA
E9 FALCON & FIRKIN
E9 ROYAL STANDARD
E11 BIRKBECK TAVERN
E11 GEORGE
E13 VILLAGE
E14 QUEENS HEAD
E15 GOLDEN GROVE
DAGENHAM, LORD DENHAM
SE1 ANCHOR & HOPE
SE1 COPPER
SE1 FOUNDERS ARMS
SE1 GEORGE TAVERN
SE1 GOOSE & FIRKIN
SE1 GRAPES
SE1 HORNIMAN AT HAYS
SE1 KINGS ARMS
SE1 MARKET PORTER
SE1 OLD BRIDGE HOUSE
SE1 PRINCE WILLIAM HENRY
SE1 SHIP, 68 Borough Road
SE1 ST GEORGES TAVERN
SE1 TRINITY ARMS
SE1 WHEATSHEAF
SE1 WHITE HART, Cornwall Street
SE1 WINDMILL, 44 Lambeth High St
SE3 BRITISH OAK
SE3 HARE & BILLET
SE3 PRINCESS OF WALES
SE5 FOX ON THE HILL
SE5 PHOENIX & FIRKIN
SE6 BLACK HORSE & HARROW
SE6 TIGERS HEAD
SE7 ANTIGALICAN
SE7 ROYAL OAK
SE8 CRYSTAL PALACE TAVERN
SE8 DOG & BELL
SE8 OLD MANOR HOUSE
SE8 ROYAL GEORGE
SE9 BANKERS DRAFT
SE10 ADMIRAL HARDY
SE10 ASHBURNHAM ARMS
SE10 RICHARD I
SE12 DUKE OF EDINBURGH
SE13 FOX & FIRKIN
SE13 HOGS HEAD
SE16 BLACKSMITHS ARMS
SE16 MANOR TAVERN
SE16 MOBY DICK
SE18 COOPERS ARMS (Plaisted's)
SE18 EARL OF CHATHAM
SE18 ROSE'S (PRINCE ALBERT)

SE18 VILLAGE BLACKSMITH
SE18 WELLESLEY ARMS
SE19 ROYAL ALBERT
SE20 MOON & STARS
SE22 CRYSTAL PALACE TAVERN
SE25 ALLIANCE
SE25 GOAT HOUSE
SE26 DULWICH WOOD HOUSE
ADDISCOMBE, CLARET WINE BAR
BARKING, BARKING DOG
BARKINGSIDE, NEW FAIRLOP OAK
BEXLEY, BLUE ANCHOR
CROYDON, ARKWRIGHT'S WHEEL
CROYDON, BUILDERS ARMS
CROYDON, DOG & BULL
CROYDON, FIDDLER & FIRKIN
CROYDON, GEORGE
CROYDON, PRINCESS ROYAL
(GLUEPOT)
CROYDON, ROYAL STANDARD
ILFORD, GREAT SPOON OF
ILFORD
LOUGHTON, LAST POST
PURLEY, FOXLEY HATCH
SOUTH CROYDON, FIDDLER &
FIRKIN
SOUTH CROYDON, RAIL VIEW
WALLINGTON, WHISPERING MOON
CLUBS
SE9 HOWERD CLUB
SE13 LEWISHAM LABOUR CLUB
SE18 PLUMSTEAD RADICAL CLUB
CROYDON, RUSKIN HOUSE
ORPINGTON, JUBILEE SPORTS
BAR

OFF TRADE

E18 Gales Off Licence, 204 High
Road, Woodford Green
SE3 Bitter Experience, 129 Lee Road
BROMLEY, Bitter End, 139 Masons Hill

OUTLETS - WEST CENTRAL and NORTH PUBS

WC1 CALTHORPE ARMS
WC1 CITTIE OF YORKE
WC1 OLD MONK
WC1 PAKENHAM ARMS
WC1 PRINCESS LOUISE
WC1 RUGBY TAVERN
WC1 SUN
WC1 THREE CUPS
WC1 UNIVERSITY OF LONDON
WC2 CROWN & ANCHOR
WC2 FULMAR & FIRKIN
WC2 GEORGE IV
WC2 HOGS HEAD
WC2 MARQUESS OF ANGLESEY
WC2 MOON & SIXPENCE
N1 179 UPPER STREET
N1 COMPTON ARMS
N1 EARL OF RADNOR
N1 GEORGE & VULTURE
N1 MALT & HOPS
N1 MARQUESS TAVERN
N1 PRINCE ARTHUR
N1 WENLOCK ARMS
N2 WELCH'S ALE HOUSE
N4 TAP & SPILE
N6 OLD GATE HOUSE

N7 TAPPIT HEN
N8 ELBOW ROOM
N8 RAILWAY TAVERN
N8 TOLL GATE
N9 LAMB
N11 BANKERS DRAFT
N12 TALLY HO
N13 WHOLE HOG
N14 NEW CROWN
N16 EBOR ARMS
N16 ROCHESTER CASTLE
N17 ELBOW ROOM
N17 NEW MOON
N19 DOG
N21 DOG & DUCK
N21 HALF MOON
N21 ORANGE TREE
N22 STARTING GATE
BARNET, MOON UNDER WATER
BARNET, WHITE LION
BARNET, YE OLDE MONKEN HOLT
COCKFOSTERS, TRENT TAVERN
EDGWARE, BLACKING BOTTLE
ENFIELD, FALLOW BUCK
ENFIELD, MOON UNDER WATER
ENFIELD, OLD WHEATSHEAF
NEW BARNET, BUILDERS ARMS
NEW BARNET, LORD KITCHENER
NEW BARNET, RAILWAY BELL
OUTLETS - NORTH WEST PUBS

NW1 HEAD OF STEAM
NW1 LORD NELSON
NW1 QUINNS
NW1 SPREAD EAGLE
NW2 BEATEN DOCKET
NW3 FLASK TAVERN
NW3 THREE HORSESHOES
NW4 CHEQUERS
NW4 GREYHOUND
NW4 PICKLED NEWT
NW8 PRINCESS ROYAL
NW9 J.J. MOONS
NW9 MOON UNDER WATER
NW9 WHITE LION OF MORTIMER
NW10 COLISEUM
NW10 GRAND JUNCTION ARMS
NW10 OUTSIDE INN
NW11 WHITE SWAN
HAREFIELD, PLOUGH
HARROW, MOON ON THE HILL
HARROW WEALD, SEVEN BALLS
HATCH END, MOON & SIXPENCE
KENTON, NEW MOON
NORTH HARROW, J.J. MOONS
RUISLIP, J.J. MOONS
SOUTH HARROW, J.J. MOONS
STANMORE, MALT HOUSE
WEALDSTONE, ROYAL OAK
WEALDSTONE, SARSEN STONE
WEMBLEY, J.J. MOONS

OFF TRADE

N1 Beer Shop, Pittfield Street
NW6 Grogblossoms, 235 West End Lane
CLUBS
NW4 HENDON SOCIAL CLUB,
Middlesex University Bus. School

continued on page 39

EDITORIAL

Last month Chris commented upon the differences between real and keg beers and the ways that brewers (initially the big ones but increasingly followed by the regionals) are narrowing the distinction between them. This month I should like to ponder a little on the marketing side of this phenomenon.

The beers that we are calling nitrokeg have been creeping up on us for some time now. Without checking my facts I would guess that Caffrey's has been around in Bass pubs for going on two years. And there is the first point; why does this sector of the market seem to be led by beers with Irish names? It is true that some subsequent brews have followed English nomenclature (John Smith's Smooth, for example) but the Irish connection was there from the start, along with the pseudo-Irish pubs we are all getting fed up talking about. Why should this be?

Let us think back - quite a long time. Well before I started drinking in the middle 1960s there was a nitrokeg beer well established in the market place. It wasn't called nitrokeg of course, that is a very recently coined term; no, this was called "Draught" Guinness. When Guinness first started putting their stout into kegs they found that the fobbing was uncontrollable because the carbon dioxide went into solution in the beer and came exploding out when the tap was opened. To overcome this problem they delivered the stout in special kegs which contained their own gas bottles. If you look at a Guinness keg you will see it has the usual keg fitting in the middle of the top and a smaller one towards the rim; this second one is the gas bottle and it contains a mixture of 80% nitrogen and 20% carbon dioxide. This arrangement was used as it was the only keg beer that used these mixed gases in those days. The tight head was produced by pushing the beer out through a tap containing a very small orifice.

Nitrokeg beers are now served in exactly the same way except that the mixed gases are delivered through the usual kind of cellar network of gas lines. So, there you are; take a keg bitter serve it like draught Guinness with a tight creamy Guinness-like head and give it an Irish name.

Now, what about the market. As I said earlier, Bass seem to have kicked things off with Caffrey's but the regionals are getting in on the act as well. In April I reported on the Wexford Bitter that Greene King are producing under the watchful eye, we are told, of George Lett, the last surviving brewer from Letts Millpark Brewery of Enniscorthy in County Wexford. Here I must apologise; had I realised it was going to be another nitrokeg beer when it was pointed out to me by a reader, I would have been more careful to point this out.

Also, we have heard of the trial of Young's Silky which was test marketed in the Dog & Fox in Wimbledon as reported by "Raincoat" in the February London Drinker. I must admit that I have not been looking very closely in my local Young's pub to see if it has spread into the wider market - I may do so later this evening. More significantly, and more recently, Fullers have come up with their nitrokeg London Cream. This is not to be confused with London Pride as it is 4.7% alcohol by volume (Does it need to be brewed to this strength to retain some flavour after it is squeezed through the tight nozzle, I wonder?). What is significant to me is that following a launch at about the end of June it seems to be spreading through the whole estate - no tentative test market here. What is not tentative either is the bar fitment that it is served through. I may be wrong but I don't think I have ever seen another British beer served through such a large font; it stands about a foot high and is chromium plated, looking like it would not be out of place as the binnacle on an ocean going yacht. And the bright blue decal looks about the size of a table tennis bat - no shrinking violet this!

We are led to believe that Fullers produced the beer to meet the demands of their landlords who wanted something to offer those passing customers who came in asking for a pint of John Smith's Smooth, Caffrey's or some such. It appears to me though, that having produced it Fullers are doing their best to let people know it is there.

Incidentally, I was talking to a friend who

continued on page 38

THE VILLAGE E13

"3RD"

BEER FESTIVAL

18th-26th AUGUST 1996

STAR
ATTRACTION
EVENING
MONDAY
26TH

5TH
ANNIVERSARY
with PARTY
MANZI

OPEN

11.30-3.00pm

5.00pm-11.00pm

FOOD
AVAILABLE
UP TO 8.00PM

MANSFIELD
GOLDEN DROP
4.5

ASH VINE
ALE HOUSE ROCK
5.0

HOGS BACK
RIPSNOTER
5.0

BISHOPS
THIRSTY WILLIES
3.7

FOXLEY
DOGBOOTER
4.6

COTLEIGH
GOSHAWK
4.3

GREENWOOD
PROHIBITION
4.8

HARVIESTOWN
PTARMIGAN 85/-
4.5

FREEMINER
IRON BREW
4.5

MOLES
LANDLORDS CHOICE
4.5

SPINNAKER
RAINDANCE
4.4

COTTAGE
G.W.R.
5.4

PLUS MANY MORE! SUBJECT TO AVAILABILITY (MAX. 5 BEERS ON AT ANY ONE TIME)

"30 BEERS IN ALL"

THE VILLAGE E13, 140 BALDAM ST, PLAISTOW E13. TEL: 0181-472 2024

http://ourworld.compuserve.com/homepages/THE_VILLAGE_E13

IDLE MOMENTS

Well here we are again then, it's August so the Christmas cards should be appearing in the shops any day now. But to take your minds off such worldly matters here are a few little diversions to while away the quiet moments in the balloon bar of the Toad and Go-Go Dancer. We'll start with the number puzzles, last month's answers first:

1. 8 American Universities make up the Ivy League
2. 95 Theses of Martin Luther (Nailed to the Church Door in Wittenburg)
3. 2 Books of the Old Testament are Named after Women
4. 7 Points are the Most you can Give Away with a Foul Shot in Snooker
5. 4 Balls in a Game of Croquet
6. 2 Years is the Maximum Length of a Suspended Sentence
7. 969 Age of Methuselah
8. 63 Characters in the Braille Alphabet
9. 18 Number of the Amendment (to the American Constitution) that Introduced Prohibition
10. 151 Number to Dial to Report a Fault on British Telecom

And here are this month's. By the way, if you are a new reader and have bought your London Drinker at the Great British Beer Festival then I bid you a special welcome.

1. 7 L is T-OM
2. 21 N of the A (to the AC) that EP
3. 4 M of PR the SNP
4. 5 P for the BB in S
5. 6 VV
6. 3,000 D was SL to A in the M of V
7. 2 LP of B (O and RC)
8. 220 M is the L of the RS
9. 40 is the LPF in the GN
10. 5 P is the S of the VN to S your D

If you haven't worked out what to do with that lot then the sensible thing is to ignore them; alternatively replace the capital letters with the words of which they are the initial letters to make sense of the sentences or phrases.

Now it's time for something different, though no more worthwhile. I call it brewery anagrams (and if I have to explain that then I advise you to go straight to a different page).

Here, once again are last month's answers:

- | | |
|---------------------------|-----------------|
| 1. A LUNCH ROBE | BLUE ANCHOR |
| 2. HARD OWLS | SHARDLOW |
| 3. MAN LOT | MALTON |
| 4. AH! THERE | HEATHER |
| 5. YES... NO... I CHUNDER | CYDER HOUSE INN |

And here are this month's anagrams for you to supply the breweries:

1. ROMANS OR TOM
2. CAUSE HOOCH
3. HON. BOSS
4. CALL TONY NOW FOR STOLEN DAM
5. SHOW BY T'WIN

The cryptic Underground stations are something you can amuse yourself with while you wait for the last train back to Earls Court. If you see a large crowd round the map on the platform it's probably best to avoid them; they're probably trying to work them out as well. As a clue to how my mind works (Oh yes it does!) here are last month's answers:

1. Raised water's edge - Embankment
2. Country seat in New England - Boston Manor
3. Motor car - Vauxhall
4. Pride of the North Circular Road Relegation League - Neasden
5. I came to see the games but there was an exhibition - Olympia

And here are this month's stations:

1. A small road full of threatening clouds
2. This side of the building is ideal for chalking messages on
3. The Girl Pipers have all gone oriental
4. Public garden below sea level
5. Only a small forest and all the trees have acorns

It would take far too much space to explain why this next bit is called 5BY4. Suffice it to say that all you have to do is match the songs numbered 1 to 10 with the artists/bands listed below them. Each month I give the puzzle a little subtitle relevant to the subject covered; this month, as all the songs begin with the same word I have called it "ALL you have to do...". Here are the songs:

1. All I Have To Do Is Dream

2. All Day And All Of The Night
3. All The Way From Memphis
4. All The Way
5. All I Really Want To Do
6. All Of My Life
7. All Or Nothing
8. All Around My Hat
9. All Shook Up
10. All Right Now

And here are the performers:

- A. Frank Sinatra
- B. Mott The Hoople
- C. Diana Ross
- D. Kinks
- E. Elvis Presley
- F. Small Faces
- G. Free
- H. Byrds
- I. Steeleye Span
- J. Everly Brothers

5BY4 is a bit different as I give the answers to THIS month's puzzle at the end of the column after the last bit which I call "Trivial Knowledge" (or is it General Trivia, I keep forgetting). Anyway, here are last month's answers to be getting on with:

1. It Doesn't Matter Any More
2. She became Peggy Sue (and later got married)
3. The new MI6 headquarters building by Vauxhall Bridge
4. Nine months; the Penny Red was issued on 10th February 1841.
5. Three. Newmarket (1,000 & 2,000 Guineas); Epsom (Derby & Oaks) and Doncaster (St. Leger)
6. Doggett's Coat and Badge, the boatmen's race from London Bridge to Chelsea.
7. 150 years
8. Mike d'Abo
9. Thomas Jones Woodward
10. Henley, hence the regatta.

And here are this month's questions:

1. Of what stone is Nelson's Column built?
2. Which British monarch was the last of the House of Hanover?
3. And on the same subject, who was the last Stuart monarch of Britain?
4. What was produced by the combined talents of Antony Jay and Jonathan Lynn?

5. How many human beings were there altogether on Noah's Ark?
6. Which is the largest city in the Southern Hemisphere?
7. What does the verb to lapidate mean?
8. Which is the oldest continuously brewing brewery in the country?
9. Which company runs the Hartford End Brewery?
10. And finally, who brews at the North Brink Brewery?

There, that was a bit of fun, wasn't it? (Correct! It wasn't). Now all it remains for me to do is to give you the solution to 5BY4:

1-J, 2-D, 3-B, 4-A, 5-H, 6-C, 7-F, 8-I, 9-E, 10-G

and to bid you farewell and best of luck till next month. Bye!

Andy Pirson

Views expressed in this publication are those of their individual authors and are not necessarily endorsed by the Editorial team or the Campaign for Real Ale Limited

BEER FESTIVAL?

**FULL RANGE OF EQUIPMENT
FOR SHORT TERM HIRE,
INCLUDING:**

- CASK ALE COOLING ● DRIP TRAYS
- RACKING ● TAPS ● BLACKBOARDS
- SELF ASSEMBLY OPTION
- ANY SIZE EVENT



CALL FREE ON

**0500
416948**

FILTON

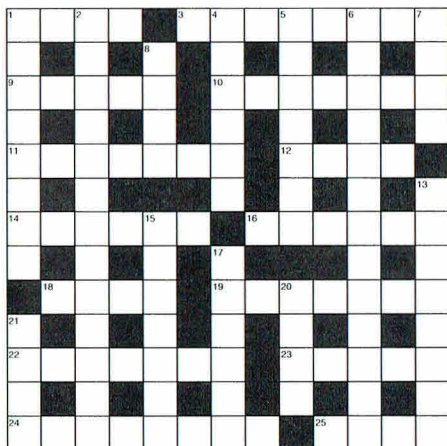
BREWERY PRODUCTS LTD

Little Chawbrook, Chawbrook Road,
Eastbourne, East Sussex BN22 8HB
Tel 01323 416948 Fax 01323 431259

LONDON DRINKER CROSSWORD

Compiled by DAVE QUINTON

£10 PRIZE TO BE WON



Name

Address

.....

All correct entries received by first post on 28th August will be entered into a draw for the prize.

Prize winner will be announced in the October London Drinker.

Solution next month.

All entries to be submitted to:

London Drinker Crossword

25 Valens House

Upper Tulse Hill

London SW2 2RX

LAST MONTH'S SOLUTION



ACROSS

1. Stick around British block. [4]
3. Post office in the afternoon has American in charge, hence the entertainment. [3,5]
9. Bill has personnel change. [5]
10. Bases guarding Spain's first rulers.... [7]
11.Thanks to rulers' income. [7]
12. Singer in the musical Tommy. [4]
14. Administered police rank. [6]
16. At the end of it you'll find 2. [6]
18. Charts return of meat. [4]
19. Back Cockney's last runner. [7]
22. Put your foot in it and incite riot leader inside. [7]
23. Border having lights on each side of road. [5]
24. Begging to take food into lobby. [8]
25. In the finish I find her. [4]

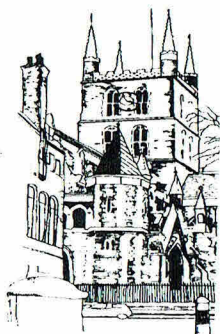
DOWN

1. Gossips about crazy party goers. [8]
2. Nip to create crisis? [8,5]
4. Most daring loses lead to most experienced. [6]
5. Weight time and friction. [7]
6. Little Abel found in the field. [5,3]
7. Players angle? [4]
8. God makes no noise. [4]
13. Stopped a leftie having a break. [8]
15. Swimmers especially have to do this. [7]
17. Container for drink and drugs? [6]
20. Told off idiot. [4]
21. Man, for example, lies around. [4]

Winner of the prize for the June Crossword:
J.E.Green, St. Albans.

Other correct entries were received from:

Aaron Aag, Geoff B, Tom Baldwin, Martyn Brown, Andy Camroux, A.P.Comaish, Kathryn Everett, Paul Gray, G.Hearne, John Heath, Pete Large, Mick Norman & His Mum, Richard & His Dad, Super Scooper, David Watkins, Martin Weedon.



BISHOPS BREWERY

CATHEDRAL BITTER (ABV 3.7%)

"A distinctive and delightful, hoppy beer"

MITRE BEST BITTER (ABV 4.2%)

"Delicious malty character with soft bitter taste"

CARDINAL ALE (ABV 4.7%)

"A traditional ruby coloured ale with full bodied taste"

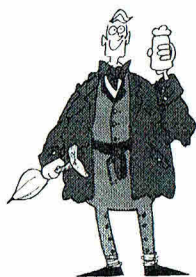
THIRSTY WILLIE'S BITTER (ABV 3.7%)

"A light coloured, superbly drinkable session ale"

**BREWERS OF THIS YEAR'S FESTIVAL ALE
FOR THE GREAT BRITISH BEER FESTIVAL**

EROS ALE 5.4 abv

- Thirsty Willie's available from selected Wetherspoon's outlets, through East West Ales.



ALSO AVAILABLE AT THESE OTHER QUALITY OUTLETS:

GEORGE INN, 77 Borough High Street, SE1

LORD CLYDE, 27 Clennam Street, SE1

PRIORY ARMS, 83 Lansdowne Way, SW8

ROBIN HOOD & LITTLE JOHN, Lion Road,
Bexleyheath

TRINITY ARMS, 7 Trinity Street, SE1

WHEATSHEAF, 6 Stoney Street, SE1

We put more hops in Bishops

Telephone or Fax us on 0171 357 8343

BRANCH DIARY

If your branch is not mentioned below, please ring the branch contact. Dates for August of which we have been notified are given below. Branches please send information to Andy Pirson. Branch contacts page 33.

LONDON PUBS GROUP: Wed 28 (8.00) Business Meeting. MARKET PORTER, 8 Stoney Street, SE1 (Note: London Drinker pick up night at the Ship)

CROYDON & SUTTON: Thu 1 (8.30) Garden Social. DOG & BULL, 24 Surrey Street, Croydon - Tue 6 (7.30) Social at the Great British Beer Festival. Meet at the Midlands bar - Mon 12 (8.30) Social. FOXLEY HATCH, 9 Russell Hill Road, Purley - Wed 21 (8.30) Joint Social with South East London Branch. GOAT HOUSE, 2 Penge Road, SE25 - Thu 29 (8.30) Branch Meeting. DOG & BULL, 24 Surrey Street, Croydon.

EAST LONDON & CITY: Mon 5 (8.00) Branch Meeting. Contact Roy Jenner (0181-806 7605) for venue - Sun 18 (all day) ELAC Beer Tent at Ridgeway Park Festival, Chingford, E4 - Fri 30 (7.00) Beer & Curry Night. Meet ALMA, Spelman Street, E1 then on to restaurant in Brick Lane (no need to book) followed by LORD RODNEYS HEAD, Whitechapel Road, E1.

ENFIELD & BARNET: Thu 1 (9.00) Social. OLD WHEATSHEAF, 3 Windmill Hill, Enfield, EN2 - Tue 6 to Sat 10 Great British Beer Festival. See you there - Tue 13 (9.00) Social. MOSS HALL TAVERN, 283 Ballards Lane, N12 - Wed 21 (9.00) Social. WHITE SWAN, 243 Golders Green Road, NW11 - Thu 29 (9.00) Social & London Drinker Pickup. BANKERS DRAFT, 36-38 Friern Barnet Road, N11 - Sat 31 (4.00) Branch Barbecue. ORANGE TREE, 18 Highfield Road, Winchmore Hill, N21.

KINGSTON & LEATHERHEAD: Thu 15 (8.30) Business Meeting. GRIFFIN, Common Road, Claygate - Thu 29 (8.30) Riverside Social. BOATERS INN, Canbury Gardens (Lower Ham Road), Kingston.

NORTH LONDON: Tue 30 July (8.00) N1 Social. LORD WOLSELEY, 55 White Lion Street then CROWN (9.30) 116 Cloudsley Road (Angel Tube) - Tue 6 No Social - Tue 13 (8.00) NW3 Social. NORTH STAR, 104 Finchley Road (opp. Finchley Road Tube & a T&J Bernard pub) then C11/C12 bus to WASHINGTON (9.30), 50 England's Lane - Tue 20 (8.00) N16 Social. EBOR ARMS, 75 Howard Road (changed back from Molly Malones and real again) then STEPTOES (9.30) 102 Stoke Newington Church Street (Newington Church BR) - Tue 27 (8.00) N1 Social. COMPTON ARMS, 4 Compton Avenue then MARQUESS TAVERN (9.30), 32 Canonbury Street (Highbury & Islington BR/Tube) - Tue 3 Sept (8.30) Branch Meeting. KINGS ARMS, 11 Northington Street, WC1 (Chancery Lane Tube)

RICHMOND & HOUNSLOW: Thu 15 (8.00) Riverside Ramble with West London Branch. Start BELL & CROWN, Strand on the Green, W4; then ROSE & CROWN (8.45), 79 Kew Green, Kew; GREYHOUND (9.30), 82 Kew Green; COACH & HORSES (10.15), 8 Kew Green - Mon 19 (8.00) Committee Meeting. PRINCE BLUCHER, 124 The Green, Twickenham (Open to all from 9.00pm)

SOUTH EAST LONDON: Thu 15 (8.00) Social. JOLLY WOODMAN, 9 Chancery Lane, Beckenham - Wed 21 (8.00) Three Pub Social. CRYSTAL PALACE TAVERN, 193 Crystal Palace Road, SE22 then UPLAND TAVERN (9.00), 90 Crystal Palace Road; LORD PALMERSTON (10.00), 91 Lordship Lane - Sat 24 Working Social at Peterborough Beer Festival. See festivals column for details.

SOUTH WEST ESSEX: Mon 5 (8.30) Social. EAGLE, Ongar Road (A128), Kelvedon Hatch - Wed 14 (8.30) Branch Meeting to discuss Branch 21st Anniversary. PLOUGH INN, off Sabines Road, Navestock Heath (OS: TQ538970) - Thu 22 (8.30) Social. NEW FAIRLOP OAK, Fencepiece Road, Fulwell Cross (A123), Barkingside - Tue 27 (8.30) Social. BRAVE NELSON, 138 Woodman Road (½ mile off B186 Warley Hill), Warley.

SOUTH WEST LONDON: Thu 8 (6.00 to 8.00) Social at the Great British Beer Festival. Meet at the HOPBACK BAR - CRICKET MATCHES: Sun 4. SPBW, Common Branch. Meet 1pm at DUKE OF CAMBRIDGE, 228 Battersea Bridge Road. Match in Battersea Park at 2.30 - Sun 11. Loughborough Branch (away) - Wed 14. London Research Centre. Abbey Rec, Morden Road, SW19 - Sun 18. Brinks. At Abbey Rec or Nursery Road, Morden Road, SW19 - Sun 1 Sept. Priory

Arms, Nursery Road, off Morden Road, SW19. Cricket Players please ring Andy Robinson: 0171-410 6302 (work) or 0181-653 8885 (home).

WATFORD & DISTRICT: Fri 9 GBBF Social. Meet at membership stand at 6.00 and hourly thereafter - Tue 13 (7.30) Oxhey Social. RIFLE VOLUNTEER then HAYDON ARMS (9.15); VICTORIA (10.00) - Wed 28 (8.30) Rickmansworth Recce. HALFWAY HOUSE then FEATHERS (9.30) - 20-21 Sept THE SECOND WATFORD CAMRA BEER FESTIVAL. West Herts Sports Club - Weekend 25-27 Oct Bateman's Trip. Names to Branch Contact.

WEST LONDON: Sun 11 (12.00) GBBF Take-Down Social. WARWICK ARMS, 160 Warwick Road, W14 - Thu 15 (8.00) Riverside Ramble with Richmond & Hounslow Branch. Start BELL & CROWN, Strand on the Green, W4; then ROSE & CROWN (8.45), 79 Kew Green, Kew; GREYHOUND (9.30), 82 Kew Green; COACH & HORSES (10.15), 8 Kew Green -Tue 27 (8.00 for 8.30) Barbecue Evening. LOWNDES ARMS, 37 Chesham Street, SW1

Deadline for the September edition, 1st August. Material for October to arrive by 2nd September. Please be sure to send all diary material to Andy Pirson.

FLEETWOOD REFURBISHMENT

Fullers tell us that one of their original City pubs, the Fleetwood in EC2 has recently undergone a £150,000 facelift. They describe this as the first refurbishment that the pub has undergone since it was built in the mid 1980s.

The pseudo Victorian clutter which tended to make the pub seem dark has been swept away and replaced by what is described as "1990s retro art-deco chic", yes really. Light American oak covers the floor while curvaceous panels of cherry wood adorn the walls. These curves are mirrored in the line of the granite topped bar and the walls are a bright yellow, adding to the light airy atmosphere. The bar itself has been extended into the drinking area in front so that there is actually less space but the removal of all unnecessary clutter and bric-a-brac together with the minimalist decor (only three specially commissioned paintings) provides a refreshing sensation of open space.

Fullers describe the pub's "most unique" feature as the lighting. There is just one light bulb to serve the whole drinking area. No, this isn't taking the minimalist decor to ridiculous lengths; it is just that the one big light bulb (that only needs changing once a year - hopefully it won't blow while the pub is crowded) illuminates all the spot lights around the place through fibre optics. Although expensive to install, the system is claimed to reduce running costs by 30% and there is the saving on light bulbs and the



The interior of the new-look Fleetwood with its curvaceous granite bar and fibre optic lighting.

labour to change them. Also, you should not be distracted by the odd blown light.

The Fleetwood now has access for disabled people and one side panel can be removed in summer to open the pub out onto the courtyard at the back.

There is a new-look menu including the "Fleetwood Mac" burger and a variety of tempting sandwiches. An interesting management feature is that the menu is faxed to local offices on a daily basis so that local workers can place their lunch orders and have the food waiting for them when they arrive - a useful idea when time is restricted. Pub manager June Bryan reports that with an extended wine list the pub can take anything between £600 and £700 in a lunchtime, adding "It must be all the bar time saved on not having to change light bulbs and selling food and drink instead!"

FROM OUR ARCHIVES

FIFTEEN YEARS AGO the August 1981 edition, a snip at 10p, was a 24 page edition sporting a smart pale green cover and the news that Tim Chudley had opened his own brewery of 50 barrels a week in Maida Vale.

The edition also reported the satisfaction expressed by John Young over the success of John Young's London Lager and reported their producing a bottled lager for the Royal Wedding.

A crawl of Westminster by Roy Matthews covered six pubs ending in the Buckingham Arms in Petty France, whilst the Linden Drunker Column expressed disquiet over the activities of Whitbread and Courage, especially the latter who had started giving away lottery tickets with the beer.

In his Free the Publican article Laurie Bishop discussed the position of tenants and whether or not they should be permitted to sell guest beers.

TEN YEARS AGO the August 1986 edition was, unusually, printed in brown with green as the second colour and, not surprisingly, featured the forthcoming GBBF at Brighton Metropole on the front cover.

A snippet from the Morning Advertiser assured us that the Southern beer drinker was not being overcharged despite the gulf between North and South beer prices. Perhaps the writer should have noted a rip-off further on in the

issue (of LD) stating that the Footlights Real Ale Bar in the Waldorf Hotel in WC2 was selling Courage Best at £1.32 a pint (quite a price 10 years ago, especially when Fullers, Chiswick can be purchased at £1.36 a pint today – Ed.).

Easternd took us on a crawl of Shoreditch covering 18 pubs, John Elliott provided a photocrawl of Fleet Street and Ludgate Hill, with a historicrawl of Rottingdean, East Sussex by Merton.

Sadly, the closure of the Darley brewery and the Lorimer & Clark brewery, both by Vaux, was recorded.

FIVE YEARS AGO the bright blue 32 page edition featured a guest editorial from Martin Smith, one time editor and archivist, commenting on the price of beer in London at between £1.10 and £1.30 a pint (Perhaps he should have read the August 86 rip off section noted above! – Ed).

This edition carried the first of a two part article on the history of Truman, Hanbury and Buxton by Martyn Cornell together with an article by Andy Pirson on his favourite pub, which in Andy's case became his favourite two pubs, the Queen Dowager and the Builders Arms, both in Teddington.

A circular sent out to Taylor Walker managers to help them reply to customers questioning the recent 8p per pint increase in beer prices was

continued on page 29

APPLICATION TO JOIN CAMRA

I/We wish to become members of the Campaign for Real Ale Limited and agree to abide by the Memorandum and Articles of Association of the Campaign.

Name(s)

Address

.....Postcode

SignatureDate

I/We enclose the remittance for individual/joint membership:

| | Individual Annual | Joint Annual | Individual Life | Joint Life |
|-------------------|------------------------------|------------------------------|-------------------------------|-------------------------------|
| UK and EEC | £12 <input type="checkbox"/> | £14 <input type="checkbox"/> | £120 <input type="checkbox"/> | £140 <input type="checkbox"/> |
| Rest of the World | £16 <input type="checkbox"/> | £18 <input type="checkbox"/> | £160 <input type="checkbox"/> | £180 <input type="checkbox"/> |
| Student/Unwaged | £6 <input type="checkbox"/> | £7 <input type="checkbox"/> | | |
| Disabled | £6 <input type="checkbox"/> | £7 <input type="checkbox"/> | £60 <input type="checkbox"/> | £70 <input type="checkbox"/> |
| Retired | £6 <input type="checkbox"/> | £7 <input type="checkbox"/> | £60 <input type="checkbox"/> | £70 <input type="checkbox"/> |

Send your remittance (payable to CAMRA Ltd) to:

Membership Secretary, CAMRA Ltd, 230 Hatfield Road, St Albans, Herts AL1 4LW



A constantly changing selection of ales from micro breweries up and down the country.

Over 1000 different ales served to date with always something new to try.

A good selection of German bottled beer including Wheat beers, Fruh Kolschbier and smoked malt Rauchbier. Thatchers traditional cider, Belgian beers and Fruit wines.

Function Room for hire

CAMRA SW London Pub of the Year
1992 and 1994

Priory Arms
a genuine free house

83 Lansdowne Way, Stockwell, SW8
(5 minutes Stockwell Tube)
Telephone 0171 622 1884

LETTERS TO THE EDITORS

Dear Editors,

I too am intrigued by the opening of large town centre pubs in south west London and read your editorial and subsequent letters with interest. I offer the following ideas.

In the 1970s some planners and geographers saw London developing as a "heartless" city – economic prosperity would be greatest in a small area of the West End, in the City and in an outer ring: Thurrock/Bromley/Croydon/Sutton/Kingston/Hounslow/Harrow/Watford. People from inner London and the Home Counties would go to the outer London ring for work, shopping and enter-tainment. Perhaps this is now coming to fruition.

Kingston itself is a major retail centre and a centre for office employment. Its night clubs now have a capacity of some 4,000 people. As the May editorial and subsequent letters have pointed out, this has led to the opening of new town centre pubs and major refurbishment of others with more on the way.

My ideas on what is driving these developments are based on why people use pubs and when in the day. I drew up the following list of reasons people might use a pub:

1. lunch, including food (eg office workers, sales people)
 2. part of shopping or tourist trip
 3. to cement a business deal or relationship
 4. celebration
 5. meal out
 6. entertainment (Sky TV, band, DJ)
 7. sports team (darts, pool)
 8. meeting place prior to main activity (eg night club)
 9. meeting of group such as a residents' association (either in pub or afterwards)
 10. drink after sport
 11. spontaneous group decision after work
 12. pre-arranged drink with friends
 13. regular of pub
- and divided into the following time periods:

- A. lunchtime (11-2)
- B. afternoon (2-5)
- C. after work (5-8)
- D. evening (8-11)

It would seem to me that these large town

centre pubs are located and fitted out to attract a good flow of customers throughout the day, typically uses 1-4, 8, 11, 12 and, in some cases, 6. In the first three time periods above, A-C, I think the aim is to attract a broad age range, only in the evening do the users come almost exclusively from the younger age range. This view is supported by recent press advertising by Surrey Free Inns for their new Kingston pub.

This is where help is needed from people with knowledge of the pub operators' market research and financial performance. I can only deduce that lunchtime, afternoon and after work use is expected to grow in terms of profitability whilst evening pub use and profitability is in decline except in locations such as Kingston where the night clubs generate new business.

Richmond also has a night life and is within easy reach of Kingston's clubs. It is a significant centre for tourism and office employment in the day. Sutton I do not know but I understand it is a big retail and office centre. I doubt that the thirsty commuter market would be big enough to justify the capital expenditure involved.

So what does this mean for the locals in residential areas? Clearly the meeting place for young people in the evening may move from a pub near their homes to, say, central Kingston but the pubs losing customers will be broadly scattered throughout south west London and Surrey; the losing pubs will not be concentrated in the residential areas of Kingston. I suspect that the pub operators are also looking to move sales from the night club bars to their pubs. Overall I think it is too simple to blame the new town centre pubs for the demise of locals in residential areas. I suspect the town centre pubs are in the growing part of the market while the locals are operating in the declining parts, declining due to social trends and market forces which are much more significant than some increased competition from new town centre pubs. This needs thinking through, building on points made in Keith Flett's letter.

Yours sincerely,
Bob Kelly, Kingston

LETTERS TO THE EDITORS (continued)

Dear Editors,

Please find enclosed a list for 'Desert Island Beers', no particular order.

1. Fullers – London Pride

Cocoonut, Kingston – I've had many pints of Pride before but this was the most memorable. I had an evening session with some friends, it tasted superb. Sadly it has never tasted again like it did that evening.

2. Fullers – Mr Harry

Cocoonut, Kingston (28.10.88) – This was the first time I tasted Mr Harry. It was in excellent condition and another great session was had. Sadly, again never the same.

3. Goddards – Special

The Fleming Arms, Binstead, IOW Holiday 95 – After finding the brewery down a rough farm track, we went to the above pub. Definitely 'beer of the holiday'.

4. Holdens – Stout

Only ever tasted this at beer festivals. A great beer. It has always been on top form.

5. Oak – XL Bitter

Sandown Beer Festival, early 80's – My first taste of real ale was at Sandown and this beer is the only one that sticks in my mind from that time.

6. Youngs – Special

Kings Arms, Epsom – One Saturday lunchtime my wife, young daughter (aged 4) and I went there. The beer was excellent. Really bitter and a great hop aroma. Went back to sample it again one Saturday evening (5pm) and got turned away. The pub was empty. Haven't been back since.

7. Bird in Hand – Artists Ale

Paradise Park, Hayle (16.9.86) – First tried this at the Hautboy, Ockham, was great then but even better at the brewpub itself. Fond memories of taking out 8 pints to our holiday home after sampling 4 at the pub, and we still played cannaster.

8. Courage – Bitter Ale

The New Inn – Crippenham (3.8.87) – An excellent refreshing lunchtime drink. Tried this on honeymoon, a good beer to try as its strength doesn't jade your performance.

Well, there it is. I hope I haven't rambled too much.

Yours faithfully,

Nick Payne

Tolworth, Surrey



HOBSON'S FINAL SUMMER FLING BEER FESTIVAL

Saturday 24th - Monday 26th August '96

OPEN ALL PERMITTED HOURS WITH LATE EXTENSIONS ON
SATURDAY & MONDAY

20 REAL ALES

including:

Hobson Nobbler

Summer Lightning

Old Speckled Hen

Old Baily

BARBEQUE

PIG ROAST

LIVE MUSIC

BEER GARDEN

FREE ENTRY

HOBSON'S CHOICE, 255 MARE STREET, HACKNEY, E8. 0181 985 1539

Come along and join in the fun...

EAST END NEWS

East London CAMRA visited O'Hanlon (8 Tysoe Street, EC1) in June. This former Whitbread pub, previously the Three Crowns, is now brewing its own beers: Dry Stout, Blakeleys No. 1 and Myrica Ale (brewed with bog myrtle and honey). In addition, it boasts a wheat beer called Maltsters Weiss. Dublin Guinness and Prague's Staropramen compliment the range. O'Hanlon no longer open weekends but their range of home made food is impressive. According to an article in the Evening Standard their stout is also available at Waxy O'Connor's (16 Rupert Street, W1) and McGovern's (32 Old Bailey, EC4) but it is expected that these two would be selling the keg variety rather than the real stuff. A story was related to me that the latter bar (which is a few doors away from Rumbroe and now re-named something Irish) has refused service to postmen in uniform and in this case Irish postmen in uniform. I expressed surprise that they ever receive mail, they certainly get the bills I was told.

The latest restaurant/bar I have spotted is at 15 Eldon Street, EC2 where Brodie's Bar and Restaurant is advertising Bass.

The Old Duke of Cambridge E3 has not so much moved site but changed address and is now 20 Reeves Road. In E12 the Three Rabbits has been re-named LJ's Bar. In E13 one of the biggest surprises is the use of oversized lined glasses. This in the Army & Navy where Flowers Original and Tetley are the beers available.

Finally, a few months back I wrote expressing surprise that some local beer guides are using the same format as the Good Beer Guide where beers sold are listed, but the brewery (or pub chain) ownership is not. Amongst those guides mentioned as not showing ownership was the North London variety. This is not the case. I hate acronyms and therefore did not spot that (for instance) Cha meant owned/run by Bass Charrington. What did I think it meant? Silly me I thought if referred to one third of a Latin American dance, I wondered which pubs were doing all three. The Hampshire Pub Guide is the latest I have spotted that doesn't mention ownership unless the pub sells no real ale. Most strange.

SWALK, NORWICH, BURMA (these are bound to turn up in an Idle Moment sooner or later).

TTFN Keith Emmerson

FORTHCOMING FESTIVALS

The Great British Beer Festival



OLYMPIA · LONDON
6th-10th AUGUST

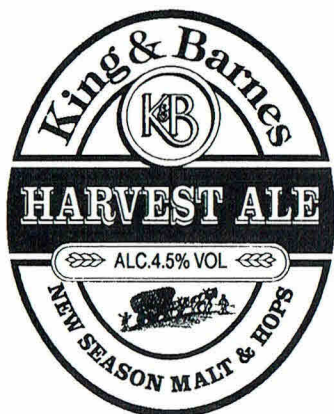


Tue - Thu eve: 5-10.30pm £4 Wed - Thu lunch: 11.30am-3pm £1
Fri: 11.30am-10.30pm £4.50 Sat: 11am-7pm £3.50 Season ticket: £13
Children Free in family room Last entry 30 mins before closing
Ring 01727 867201 for further details

- | | |
|-------------------|--|
| 16-17 Aug | 21st Portsmouth The Guildhall Portsmouth |
| 3-7 Sept | Chappel Beer Festival Chappel & Wates Colne Stn |
| 6-9 Sept | Oxford Bus Museum Long Hanborough |
| 7 Sept | Maidstone Museum of Rural Life Sandling |
| 12-15 Sept | St Ivo Beer Festival St Ivo Centre St Ives, Cambs |
| 19-21 Sept | North Herts Plinston Hall Letchworth |
| 26-28 Sept | 5th Feltham Feltham Assembly Hall Hounslow Road, Feltham |
| 2-5 Oct | Bedford Corn Exchange, Bedford |
| 4-5 Oct | Beers from the Woodville Woodville Hall, Gravesend |
| 10-12 Oct | St Albans Anniversary Beer Festival Alban Arena St Albans |
| 24-26 Oct | Croydon Ruskin House Club Ruskin Road, Croydon |
| 25-26 Oct | Overton St Lukes Hall, Overton |
| 28 Oct | Norwich |
| -2 Nov | St Andrews and Blackfriars Hall |
| 8-9 Nov | Woking Woking Leisure Centre (tickets in advance only) |

King & Barnes

FINE SUSSEX ALES



*Available from
beginning of September*



*Available from
beginning of October*

*For more information on the Brewery,
the Pubs, the Beers or Guided Tours
please ring or write to:*

KING & BARNES LTD.

18 BISHOPRIC, HORSHAM, WEST SUSSEX RH12 1QP

Telephone: 01403 270470

OUR LOSS IS THEIR GAIN

Branch members in SW London will be sorry to hear that one of our best publicans has moved on to Hammersmith.

Jeremy and Diane Morley have been at 'The Nightingale' in Nightingale Lane, SW12 for eight years during which time, they have proved to be the epitome of all that is best in Young's Managers. The 'Bird' as it is known, is a busy pub with a very local bunch of locals who have proved themselves to be the best fundraisers for local charities, through their annual walk, that I have ever come across. Whatever the activity, Jeremy and Diane, have joined in with gusto and encouraged the walk committee in all their preparations and celebrations. They have also participated in the walks over the years.

During their time, 'The Bird' has featured regularly in the 'Good Beer Guide' and has won the coveted 'Pub of the Year' award from the local branch. The award is one of Jeremy's favourite mementoes of his time at the pub. As some readers are aware, I run a Schools' District Football team and we have held our annual presentation ceremony in the garden of the Nightingale and Diane's buffet has proved a wonderful end to each year's awards. My heartfelt thanks to her.

Jeremy is one of a dying breed of landlords who drinks his own beer, so it has to be good. He also appreciates fine wine and has built up the pub's wine cellar almost from scratch. I attended their farewell bash midway through July and the esteem in which they are held by their customers was plain for all to see. It was an emotional farewell as Diane and Jeremy have loved their time at 'The Bird' but the offer from Young's of a bigger pub which has just been rebuilt, with excellent living quarters for them and their children, proved to be the spur to move on.

'The Hammersmith Ram', ex 'The Builders' in Hammersmith is their new pub and I wish them every success in this next stage of their careers. Customers at the pub will find them very professional as well as very open, friendly people, who care about beer and their pub. Seek them out West London CAMRA members and readers in the vicinity. You will not be disappointed.



A genuine Free House featuring a selection of the very best in Cask Ales, Traditional Cider and Perry

- Mild always available
- Lined glasses guarantee full pints
- Salt Beef Sandwiches
- Function room free to CAMRA members
- Jazz piano Sunday lunchtimes
- Jazz every Friday and 3rd Saturday evening in the month
- Open all permitted hours

CAMRA
NORTH LONDON
PUB OF THE YEAR
1995 & 1996

26 Wenlock Road, N1
0171 608 3406

Nearest Tube stations are Old Street (exit 1) and Angel. Wenlock Road is off City Road via Windsor Terrace

*** JOEY HOLTS WILL BE ON DURING THE FIRST WEEK OF AUGUST**

SOUTH EAST LONDON CLUB OF THE YEAR

The South East London Branch of CAMRA recently decided to award a Club of the Year. On Thursday 20th June a small group met at the Lewisham Labour Club to begin a "Club Crawl" in order to determine the overall winner.



Not actually Club of the Year, this is Plumstead Radical Club (photo: J.Courtney)

The Lewisham Labour Club is situated behind the shops in Lewisham High Street, just off Limes Grove; it is divided into several meeting rooms and has a fairly small upstairs bar. The club has been supplied by various breweries in the past; the current beers on offer are Burton and Friary Meux, both of which were in excellent condition. From the Lewisham Labour Club we made our way to the Howerd Club.

The Howerd Club is a one-room club located behind St Barnabas' Church Hall, Rochester Way, SE9 close to the Well Hall Roundabout. The clubroom is decorated with memorabilia relating to Frankie Howerd who was born locally and after whom the club is named. Club membership is restricted to local parishioners, but card carrying CAMRA members are allowed free entry. The beers on offer were Masterbrew, London Pride and Bateman's XXXB. Once again the beers were in excellent condition. From here we proceeded to the Plumstead Radical Club.

The Plumstead Radical Club is in Walmer Terrace, close to Plumstead bus garage and Plumstead railway station. In contrast to the first two, this is a 3-storey club with a large function room on the first floor and a basement housing five snooker tables. This CIU-affiliated club normally has five real ales available, more than virtually all the pubs in the area. However, on the evening we visited

"only" four beers were on - Masterbrew, Old Speckled Hen, Courage Best Bitter and Tetley's. The trustee we spoke to explained that the guest beer was not yet in a fit condition to be served - if only some local pubs would follow the club's example! Once again the beers on offer were in excellent condition.

After much debate we decided to award the title South East London Club of the Year to the Howerd Club. Any card carrying CAMRA member can visit the club on Monday to Saturday evenings from 7.30pm.

COST TO TREASURY OF DUTY PAID IMPORTS

The Chancellor of the Exchequer lost £201 million in beer taxes last year - comprising excise duty £121 million and £80 million VAT.

Duty paid imports have been good news for the French Chancellor who has probably gained an unexpected £33 million in excise duty from British shoppers buying beer in France.

The Old Manor House

Bush Road, London, SE8
Telephone 0171 394 0841

*Surrey Quays only totally
"Free" Real Ale House*

**Youngs Ales always
available PLUS
constantly changing
Guest Ales**

*Comfortable surroundings
Hot Snacks available
We are in the 1996 CAMRA
Good Beer Guide*



Since the last Wetherspoon News, the company has opened 12 new pubs throughout the country.

At present (August 1996) building teams are on site at 12 new pubs and a further 5 will be on site in the coming weeks and months.

As a result of its expansion, Wetherspoon has hit new heights by being listed in the FT Mid 250.

It means the company, which floated on the London Stock Exchange in October 1992, is one of the top 350 companies in the UK.

The top 100 companies are listed on the FTSE 100 (The Footsie). Wetherspoon's is in the next category and thereafter all other companies are in the FT All Share.

Wetherspoon Finance Director Richard Pennycook said: "We're delighted to have risen to the FT Mid 250 less than four years after flotation."

"The ranking is based on market value and Wetherspoon's value has risen from £170 million to £358 million in one year."

"Our aim is to rise up the FT Mid 250 table and eventually into The Footsie."

•Below is a list of forthcoming openings – The opening dates in brackets, are only a guide and are subject to change.

ON SITE – AUGUST 1996 (ONWARDS)

- The King's Ford – 250-252 Chingford Mount Road, Chingford (September 5)
- The Dragon Inn – 15 Meadow Street, Weston -Super-Mare (September 13)
- The George – 2-8 High Street, Staines (September 20)
- Unnamed – 18-20 Leys Avenue, Letchworth (November 1)
- The Opera House, 48-60 Mount Pleasant Road, Tunbridge Wells
- The Moon Under Water – 7 Market Place, Wigan (November 1)
- Unnamed (The former Marquee Club) – 105 Charing Cross Road, London WC2 (November 7)
- Unnamed – 33 Westow Street, Crystal Palace (November 14)
- The Counting House – George Square, Glasgow (November 15)
- Unnamed – Wilson Street, Middlesborough (November 21)
- Unnamed – 16A/17 Silver Street, Wellingborough (November 21)
- The Lord Roseberry – 115-117 Westborough, Scarborough (November 22)
- Unnamed – 104/108 Kings Road, Reading (November 28)
- Unnamed – 198-204 High Street, Lewisham (January 9)
- The Picture House, Bridge Street, Stafford (January 24)
- Unnamed – 18 Foregate Street, Worcester (February 7)
- Unnamed – 15/16 The Strand, Torquay (March 20)



Existing exterior of London (Charing Cross Road) site



Existing exterior of Scarborough site

your WETHERSPOON PUB GUIDE

BARKING AND DAGENHAM

THE BARKING DOG
61 Station Parade, Barking

THE LORD DENMAN
270-272 Heathway, Dagenham

BARNET

THE MOON UNDER WATER
148 High Street, Barnet

THE WHITE LION OF MORTIMER
3 York Parade, West Hendon
Broadway NW9

THE RAILWAY BELL
13 East Barnet Road, New Barnet

THE MOON UNDER WATER
10 Varley Parade, Colindale NW9

***THE TALLY HO**
749 High Road, North Finchley N12

THE BLACKING BOTTLE
122-126 High Street, Edgware

BEXLEY

THE WRONG 'UN
234-236 The Broadway, Bexleyheath

BRENT

J J MOON'S
553 Kingsbury Road, Kingsbury NW9

THE OUTSIDE INN
312-314 Neasden Lane, Neasden
NW10

J J MOON'S
397 High Road, Wembley

THE COLISEUM
Manor Park Road, Harlesden NW10

BROMLEY

THE MOON AND STARS
164-166 High Street, Penge SE20

THE HARVEST MOON
141-143 High Street, Orpington

THE SOVEREIGN OF THE SEAS
109-111 Queensway, Petts Wood

CAMDEN

THE MAN IN THE MOON
40-42 Chalk Farm Road, Camden
NW1

THE BEATEN DOCKET
50-56 Cricklewood Broadway,
Cricklewood NW2

THE THREE HORSESHOES
28 Heath Street, Hampstead NW3

CITY OF LONDON

HAMILTON HALL
Liverpool Street Station EC2

CROYDON

THE GEORGE
17-21 George Street, Croydon

THE MOON UNDER WATER
1327 London Road, Norbury SW16

THE FOXLEY HATCH
8-9 Russell Hill Parade,
Russell Hill Road, Purley

EALING

THE RED LION AND PINEAPPLE
281 High Street, Acton W3

ENFIELD

THE MOON UNDER WATER
115-117 Chase Side, Enfield

THE WHOLE HOG
430-434 Green Lanes, Palmers Green
N13

THE HALF MOON
749 Green Lanes, Winchmore Hill N21

THE BANKER'S DRAFT
36-38 Friern Barnet Road,
New Southgate N11

THE LAMB
52-54 Church Street, Edmonton N9

THE NEW CROWN
80-84 Chase Side, Southgate

EPPING FOREST

THE LAST POST
227 High Road, Loughton

GREENWICH

THE BANKER'S DRAFT
80 High Street, Eltham SE9

HACKNEY

THE ROCHESTER CASTLE
145 High Street, Stoke Newington N16

HAMMERSMITH

THE MOON ON THE GREEN
172-174 Uxbridge Road,
Shepherds Bush W12

HARINGEY

THE OLD SUFFOLK PUNCH
10-12 Grand Parade, Green Lanes,
Harringay N4

THE NEW MOON

413 Lordship Lane, Tottenham N17

THE ELBOW ROOM

503-505 High Road, Tottenham N17

THE TOLL GATE

26-30 Turnpike Lane, Hornsey N8

THE ELBOW ROOM

22 Topsfield Parade, Tottenham Lane,
Crouch End N8

THE GATE HOUSE

1 North Hill, Highgate N6

HARROW

J J MOON'S
3 Shaftesbury Parade,
Shaftesbury Circle, South Harrow

THE MOON ON THE HILL
373-375 Station Road, Harrow

NOW

- The Cross Keys – 2 Chequer S
- The Last Plantagenet – 10
- The Colledge Arms – 40 Th
- The Bankers Draft – 1-3
- The Figure of Eight – B
- The Ash Tree – Main Street, Wel
- The Benjamin Satchwell – 112-
- The Grey Friar – 14
- The Standing Order – 20
- The Moon on the Square – The Pa
- The Full Moon – 58-6
- The Sun – 17 Lon

THE NEW MOON

25-26 Kenton Park Parade,
Kenton Road, Harrow

THE MOON AND SIXPENCE

250 Uxbridge Road, Pinner

THE SARSEN STONE

32 High Street, Wealdstone

J J MOON'S

20 The Broadwalk, Pinner Road,
North Harrow

THE VILLAGE INN

402-408 Rayners Lane, Pinner

THE MAN IN THE MOON

1 Buckingham Parade, Stanmore

HAVERING

J J MOON'S
46-62 High Street, Hornchurch

THE MOON AND STARS

99-103 South Street, Romford

HERTFORDSHIRE**THE HART AND SPOOL**

148 Shenley Road, Borehamwood

THE MOON UNDER WATER

44, High Street, Watford

HILLINGDON**J J MOON'S**

12 Victoria Road, Ruislip Manor

THE MOON UNDER WATER10-11 Broadway Parade,
Coldharbour Lane, Hayes**J J MOON'S**Terminal Four, (Airside),
Heathrow Airport, Hounslow**OPEN**

street, St Albans, Hertfordshire

7 Granby Street, Leicester

e Broadway, Peterborough

Market Place, Sheffield

oad Street, Birmingham

ington Road, Ashton-Under-Lyne

14 The Parade, Leamington Spa

4, Friargate, Preston

High Street, Southampton

rade - Market Place, Northampton

0 High Street, Dudley

don Road, Redhill

WETHERSPOONSTerminal Four, (Landside),
Heathrow Airport, Hounslow**THE MOON AND SIXPENCE**1250-1256 Uxbridge Road,
Hayes End**THE SYLVAN MOON**

27 Green Lane, Northwood

THE GOOD YARN

132 High Street, Uxbridge

HOUNSLOW**THE MOON UNDER WATER**

84-86 Staines Road, Hounslow

J J MOON'S80-82 Chiswick High Road, Chiswick
W4**THE MOON ON THE SQUARE**

Unit 30, The Centre, Feltham

ISLINGTON**THE CORONET**

338-346 Holloway Road, London N7

THE DOG

17-19 Archway Road, Archway N19

179 UPPER STREET

179 Upper Street, Islington N1

THE WHITE LION OF MORTIMER125-127 Stroud Green Road,
Stroud Green N4**THE MASQUE HAUNT**

168-172 Old Street EC2

KENT**THE PAPER MOON**

55 High Street, Dartford

LAMBETH**THE CROWN AND SCEPTRE**

2a Streatham Hill SW2

THE BEEHIVE

407-409 Brixton Road, Brixton SW9

LEWISHAM**THE TIGER'S HEAD**

350 Bromley Road, Catford SE6

THE BIRD IN HAND

35 Dartmouth Road, Forest Hill SE23

MERTON**THE WHITE LION OF MORTIMER**

223 London Road, Mitcham

WETHERSPOONS

33 Aberconway Road, Morden

THE WIBBAS DOWN INN

6-12 Gladstone Road, Wimbledon

NEWHAM**THE MILLER'S WELL**

419-421 Barking Road, East Ham E6

THE GOLDENGROVE

146-148 The Grove, Stratford E15

REDBRIDGE**THE NEW FAIRLOP OAK**

Fencepiece Road, Barkingside

THE GEORGE

High Street, Wanstead E11

THE GREAT SPOON OF ILFORD

114-116 Cranbrook Road, Ilford

RICHMOND UPON THAMES**THE MOON UNDER WATER**

53-57 London Road, Twickenham

SOUTHWARK***THE FOX ON THE HILL**

149 Denmark Hill SE5

SURREY**THE REGENT**

19 Church Street, Walton-on Thames

SUTTON**THE WHISPERING MOON**25 Ross Parade, Woodcote Road,
Wallingford**THE MOON ON THE HILL**

5-9 Hill Road, Sutton

WETHERSPOONS

553-556 London Road, North Cheam

TOWER HAMLETS**THE CAMDEN'S HEAD**456 Bethnal Green Road, Bethnal
Green E2**WALTHAM FOREST****THE DRUM**

557-559 Lea Bridge Road, Leyton E10

WANDSWORTH**J J MOON'S**

56a High Street, Tooting SW17

THE MOON UNDER WATER

194 Balham High Road, Balham SW12

THE SPOTTED DOG72 Garratt Lane, Arndale Centre,
Wandsworth SW18**THE RAILWAY**

202 Upper Richmond Road, Putney SW15

THE GRID INN22 Replingham Road,
Southfields SW18**WESTMINSTER****THE MOON UNDER WATER**

28 Leicester Square WC2

WETHERSPOONS

Victoria Station SW1

THE MOON AND SIXPENCE

185 Wardour Street W1

THE LORD MOON OF THE MALL

16-18 Whitehall SW1

OUTSIDE M25**BERKSHIRE**

• **THE OLD MANOR**
Church Road, Bracknell

THE MONK'S RETREAT
163 Friar Street, Reading

THE MOON UNDER WATER
86-88 High Street, Slough

BIRMINGHAM

THE SQUARE PEG
Units 1, 2 & 3 Temple Court, 115
Corporation Street

BRISTOL

THE COMMERCIAL ROOMS
43-45 Corn Street

THE BERKELEY
15-19 Queens Road, Clifton

BUCKINGHAMSHIRE

THE LAST POST
77 The Broadway, Chesham

THE FALCON
9 Cornmarket, High Wycombe

WETHERSPOONS
201 Midsummer Boulevard, Bouverie
Square, Milton Keynes

CHESHIRE

WETHERSPOONS
78-92 Foregate Street, Chester

DERBYSHIRE

THE STANDING ORDER
28-32 Irongate, Derby

DEVON

THE IMPERIAL
New North Road, Exeter

DORSET

THE MOON IN THE SQUARE
4-8 Exeter Road, The Square,
Bournemouth

EAST SUSSEX

CLIFTONVILLE INN
98-101 George Street, Hove

ESSEX

THE ELMS
1060 London Road, Leigh-on-Sea

THE LAST POST
Weston Road, Southend-on-Sea

THE PLAYHOUSE
4 St. John Street, Colchester

THE MOON ON THE SQUARE
1-15 Market Square, Basildon

GLOUCESTER

THE REGAL
Kings Square, Gloucester

GWENT

WETHERSPOONS
Unit 10-12 The Cambrian Centre,
Newport

HAMPSHIRE

WETHERSPOONS
2 Guildhall Walk, Portsmouth

HEREFORD AND WORCESTER

THE GOLDEN CROSS HOTEL
20 High Street, Bromsgrove

KENT

THE MUGGLETON INN
8-9 High Street, Maidstone

LANCASHIRE

THE POSTAL ORDER
15 Darwen Street, Blackburn

LINCOLNSHIRE

THE TOLLEMACHE INN
St. Peters Hill
28 Catherines Road, Grantham

LIVERPOOL

WETHERSPOONS
Units 1,2 & 3 Charlotte Row,
Great Charlotte Street, Liverpool

MANCHESTER

THE MOON UNDER WATER
68-74 Deansgate

WETHERSPOONS
49 Piccadilly

NORFOLK

THE BELL HOTEL
5 Orford Hill, Norwich

THE TROLL CART
7-9 Regent Road, Great Yarmouth

OXFORDSHIRE

THE EXCHANGE
49-50 High Street, Banbury

SOUTHPORT

WETHERSPOONS
20 Lord Street, Southport

SUFFOLK

THE WOLF
88-89 St John Street, Bury St Edmunds

SURREY

WETHERSPOONS
51-57 Chertsey Road, Woking

WEST GLAMORGAN

THE POTTER'S WHEEL
86 The Kingsway, Swansea

WEST SUSSEX

THE RED LION
North Terminal, International
Departures Lounge, Gatwick Airport
(Airside)

THE JUBILEE OAK

6 Grand Parade, High Street, Crawley

THE HATTERS INN

2-10 Queensway, Bognor Regis

WILTSHIRE

THE SAVOY
38-40 Regent Street, Swindon

WOLVERHAMPTON

THE MOON UNDER WATER
53-55 Lichfield Street, Wolverhampton

YORKSHIRE

THE RHINOCEROS
35-37 Bridgegate, Rotherham

For more information on any Wetherspoon pub or activity write to:

J D Wetherspoon plc, Wetherspoon House, Central Park, Reeds Crescent, Watford, Herts WD1 1QH. or Telephone (01923) 477774

* Children are allowed in these pubs at all times (denoted by asterisk) when accompanied by an adult and only when food is ordered.

REAL PUBS – AND REAL GUV’NORS – PLEASE!

Where have all the rude and abusive Guv’nors gone? Bring ‘em back now, I say!

I pondered over this last Saturday while strolling down Old Compton Street, window shopping for new bondage gear. Whom did I bump into but the old King of Abuse himself, Norman Balon.

Norm was his usual pleasant self though, despite his reported infancy at the Coach & Horses, serialised for years in a Private Eye ‘strip called The Regulars (Jeff ‘bin in?), I’ve always found the great man too likeable.

Some years back I got involved in publicity for his book, “You’re barred, you Bastards!” and again later when he signed on the life line for a Vanguard lease. He was a pussy cat. Norm, like so many former characters in the trade, has gone soft. Pubs are poorer for it. Oh, for the fiery days of my youth in Edinburgh. We would take our pick of abusive Guv’nors then.

There was old Betsy Moss (80 plus) of the Old Chain Pier bar, who was a marvel at drinking-up time. She’d cross the bar, cutlass and loaded starting pistol in hand crying “Right ya shower — oot!”.

Slow coaches had the cutlass violently embedded into their table and the pistol planed a regulation half inch from their ear.

King of Scots with abuse at the time was the late Willie Ross of the Oxford Bar, who slagged off every customer he ever served. All foreigners were barred instantly. English and American got especially short shrift being sharply reminded of the fatherless nature while heading for the exits.

Willie was a star. In common with six other ‘70’s Edinburgh pubs he refused to have a ladies loo and he refused also to ever wash a glass. Pint pots had to be prized off sticky shelves before service. And if the thick collar of scum resulted in so much as a raised eyebrow such defiance earned a blast of abuse and a full life ban.

Another legend was Big John of the Southern Bar. One night some fellow Hearts fans and I bumped into our pal Roddie moments after he’d successfully proposed to a former Miss Brazil. A beaming Roddie waltzed us in

Trinity Arms

EVERYDAY’S A BEER FESTIVAL

- a constantly changing selection

BOTTLE CONDITIONED ALES

- ◆ Wednesday: Piano Bar 9 pm
- ◆ Thursday: Jazz 8.30 pm
- ◆ Sunday: Quiz 8.30 pm
- ◆ Open all permitted hours
- ◆ Nearest tube Borough

7 Trinity Sreet, London SE1

Tel 0171 207 5662

to the Southern and asked Big John for five pints of heavy and a Dubonnet and lemonade. Six pints arrived so an apologetic Roddie reminded Big John of the true order. A stunned (though still respectful) Roddie was told: “She’ll drink f***** Heavy in here like everybody else!”.

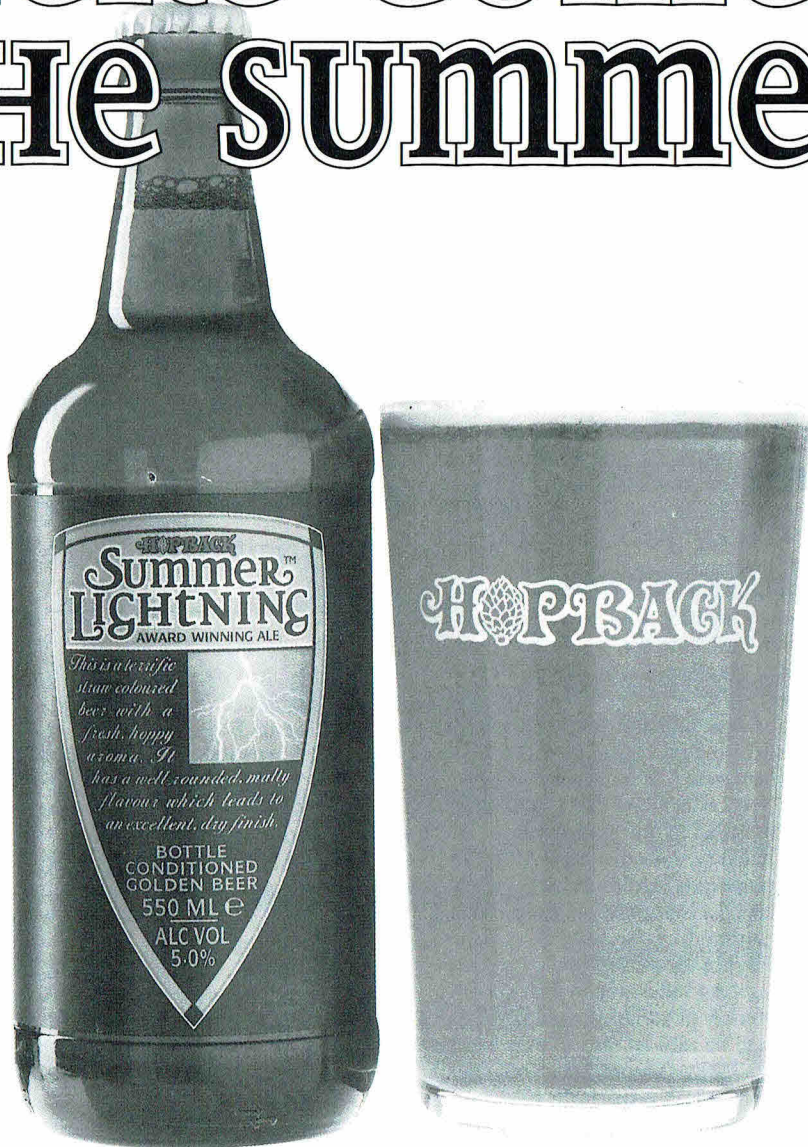
Those were the days. Now we are faced with managed houses run by uniformed Guv’nors according to a retail company’s textbook. The characters have been designed out of things by the big brewery training departments.

Instead, pubs compete on facilities like dining rooms, family rooms and no-smoking areas. Mind you this isn’t entirely a bad thing as all the politically-correct anoraks are herded into one area and away from us soaks.

Each year the brewers rob us of characters and of characterful pubs. Each year more pubs close and less beer is sold in pubs. Clearly, dining, family and smoke free rooms – not forgetting ladies loos — have a lot to answer for. I wonder what Willie Ross would have said about it all!

Danny Blyth

Here comes the summer



a Quality BOTTLE-CONDITIONED ale from the
**WINNERS of over 50 Camra
Beer festival awards.**

available at ODDBINS and HOPBACK Brewery PUBS

HOP BACK BREWERY - 01725 510986



HOGSHEAD ALE HOUSES GIVE BEER SUPPORTERS GOLDEN CHANCE TO TRAVEL THE WORLD

Hogsheads real ale houses are giving supporters of good beer a golden opportunity to travel the world – without moving from the comfort of one of their 85 pubs.

Owned by Whitbread Inns and specialising in cask conditioned beer, Hogsheads launched a world beers' festival on 22 July, to coincide with this summer's Olympic Games in Atlanta.

Aubrey Johnson, Hogshead Brand Manager said: "The Olympic Games has set the stage for us to offer our customers some different tastes from around the globe. We are featuring both cask conditioned ales and bottled beers which are world classics."

Cask conditioned beers on offer include two specially brewed beers which will only be available at Hogsheads ale houses.

They are:

- * **Bateman's US Ale** – a golden ale brewed by the Lincolnshire brewers to an abv of 5%, using maize syrup and Liberty hops from Washington.
- * and **McAndrews Yankee Ale** – a Scottish American ale with an abv of 4.8%, produced by Edinburgh brewery Caledonian, again using fresh American hops and malted rye.

Also on offer are:

- * **Young's Wheat beer** – brewed in the Belgian style from malted barley and malted wheat by the London brewery and 4% abv;
- * **Morland's Aunt Sally** – a rich, malty summer ale produced by the Oxfordshire brewery with an abv of 3.8%;
- * **Cains' Independence** – brewed at 4.2% abv by the Merseyside brewers using USA hops;
- * **Triple Hop** – brewed at Cheltenham using a blend of English target, Czech Saaz and American Cascade hops;
- * and **Marston's Summer Wheat beer** – brewed and fermented in a traditional Bavarian style by the Burton upon Trent brewery with an abv of 4.2%.

Special bottled beers on sale from around the world include:

Two from the USA – Pete's Wicked Summer Brew, and Anchor Liberty Ale;

- * from Germany, **Lowenbrau's cloudy Wheat Beer**;
- * from the Czech Republic, a dark lager called **Black Regent**;
- * from Australia, **Cooper's Sparkling Ale**;
- * and from Belgium, **Saison de Silly ale**.

Hogshead pubs serve more than 200 ales during the year, many of them at special festivals. A minimum of eight are always on tap.

FREE GUIDE TO NORTH DOWNS INNS

Walkers, ramblers and sightseers now have a free pocket-size map and guide produced by Kent County Council to show them the way to 31 Shepherd Neame pubs on or near the spectacular views and glorious countryside of the North Downs Way in Kent.

The North Downs Way, which is Kent's only National Trail, runs for 153 miles from Farnham, Surrey to Dover via the Medway Towns, Maidstone, Ashford and Folkestone with an alternative route to Canterbury.

At the launch of "A Guide to Inns on the North Downs Way in Kent", co-chairman of Kent County Council's Environmental Action sub-committee Sarah Ward, said: "I hope people will use this leaflet to combine a stroll along the Downs with a refreshing stop at one of the pubs."

Affirming Mrs Ward's sentiments, Shepherd Neame chairman Robert Neame said: "Hopefully, this guide to pubs along the trail will encourage even more people to explore Kent's wonderful countryside and discover the pleasures of walking the North Downs Way."

Last year, Shepherd Neame provided £15,000 sponsorship for the North Downs Way.

'A Guide to Inns on the North Downs Way' is available from Shepherd Neame, 17 Court Street, Faversham ME13 7AX and Shepherd Neame pubs on or near the North Downs Way.

Two separate leaflets detailing circular walks starting and finishing at the New Flying Horse, Wye and The Harrow, Knockholt are also available and more are planned.

A PUB MISCELLANY

(With acknowledgements to the CAMRA Good Beer Guides for 1974-1976)

Although this article is of purely historic nature it is, I believe, of some relevance for two reasons.

Firstly, let it not be forgotten that CAMRA, having been born in 1971, is now older than many of its members. It may be of interest to many to read for the first time some of the quaint quirks which were considered of relevance twenty years ago, many of which would be deemed trivial today.

Secondly, although pub descriptions in the National Guide were of necessity brief, the remarkable variety of some of them still provide a valid insight into the wonderfully varied world which constitutes the best of our pubs, still a national institution to be cherished and valued. Although the vast majority of the items which I quote will no longer be applicable, they will have been replaced by others, equally as interesting and, no doubt, just as eccentric.

I well remembered being lectured by the then Editor of the Guide as a would-be contributor to the 1975 edition. He despaired of the number of "typical unspoilt country pubs" or "typical unspoilt town pubs" for which he received entry forms. He may well have also despaired of "100-year-old pub", "200-year-old pub" and literally dozens more of the ilk. He yearned for variety and it is my belief that the following miscellany is adequate illustration that his prayers did not go entirely unanswered.

The first question is where to start? Perhaps the best and certainly the most fruitful area is the apparent passion among landlords for collecting things. Many items, such as beer mats, bottles, bank notes and malt whiskies are relatively commonplace. How about the following miscellany for others which are less so. In my search I located, in no particular order, ties, stone bottles, jugs, railway memorabilia, military uniforms, birds eggs, butterflies, paintings by local artists, goldfish, budgerigars, horse tack, stuffed animals' heads, foreign bottled beers (not for sale), glass rolling pins, boxing souvenirs, old weapons and armour, farm implements, horse brasses, toby jugs,

chamber pots and bedpans (I kid you not!). Plus no doubt, many more.

Undoubtedly one of the most developed aspects of the pub trade in the last twenty years has been the availability of excellent meals at, on the whole, eminently reasonable prices. Although it is my firm contention that food is not necessarily an essential ingredient of the perfect pub it does, unquestionably, have an increasingly large part to play and is a regularly recurring theme in current CAMRA publications. The day of the pure drinking den is, perhaps, numbered despite my personal reservations. In the 70s although this trend was undoubtedly well under way, we still find one or two little culinary curiosities.

The Jolly Farmer, Binfield, Berkshire, received "regular visits from the cockle and whelk seller" while we are told that the landlord of the White Hart, Northend, Buckinghamshire, "drives to Yorkshire to buy pork pies". The landlord of the Star, Copmere End, Staffordshire, was clearly a man of enterprise as here were "vegetables, fruit, flowers and home made cakes auctioned on Sunday". On a different angle, we find that in the Tinnors Arms, Zennor, Cornwall "harvest festival is held at inn". Having subsequently sampled the offerings at this hostelry I can only concur that such thanksgivings are amply justified!

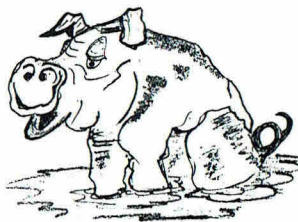
Enough of these culinary matters. Let us now refer to perhaps the biggest curse of the traditional drinker (lager apart, that is!). If music be the food of love, I leave most pubs with the distinct impression that I have just been poisoned. Please support those sadly few pubs in the Good Beer Guide which bear the symbol 'Q'. In these one may imbibe and converse in peace, free from the various types of din emanating from juke boxes, background music, discotheques, overloud television sets and sundry electronic gaming devices. Live music, of the strictly non-electronic variety is an eminently different matter. The Grange, Vernham Dean, Hampshire proclaims the joys of "singsongs on Saturdays", while in the Wheatsheaf,

Douglas, Isle of Man, there was an “electric organ for sunny summer singsongs”. This must have been tongue in cheek. I recall visiting the place at the time to find a huge room, in the corner of which the organist was in action, while the very few customers gathered by the bar at the greatest possible distance from their musical protagonist. St. Cecilia would have been more impressed by the sound emanating from the Devonshire Arms, Dore, South Yorkshire, which staged “choir singing on Thursday nights”. More aesthetically questionable may have been the entertainment at the Plough & Harrow, Fazeley, Staffordshire, the proud possessors of a “piano worked by air pressure”. Sounds a bit windy to me! Perhaps the most interesting of all, the Queens, Cleethorpes, Humberside, is described as a “large pub with exotic entertainment”. The mind boggles!

The world of sport has always had an important part to play in the social aspect of the pub. Many pubs run teams in such popular pastimes as football, darts or cricket. Crown green bowling has made a significant comeback in recent years in our area and is probably more culturally suited to the pub than its southern flat green equivalent. Pubs often serve as the headquarters of the local angling or pigeon fanciers club. Many other comparatively obscure sports are also played on licensed premises. These include such pastimes as bar billiards (an excellent pub game), devil-among-the-tailors, quoits, bat and trap, squash and even archery. An odd variety of pastimes was found in the Red House, Sheffield, a “meeting place for sub-aqua club and Irish clergy”. Chess was apparently also played. One of the more unusual contests took place at the Letters, Aspatria, Cumbria, “an old local with a singing team which plays in a Monday Night League”! Against whom? Were there other leagues on different nights? How was the winner judged? It is to be hoped that the even tenor of the evenings was not disturbed by controversial refereeing decisions!

The guide used to make some unorthodox commendations, one of my favourites having been inspired by the Gardeners Arms, Castleford, West Yorkshire, which was “not

**BEER FESTIVAL
& “WHOLE PIG SPIT ROAST”
AUGUST BANK HOLIDAY
WEEKEND
(Spit Roast on Monday 26th)**



**THE CRICKETERS
FAIRFIELD SOUTH, KINGSTON
0181 296 0479**

recommended for impressing the girl friend”. Surely a bit of spit and sawdust never did anyone any harm. Or perhaps it was the spittoons! In another curious observation, the Hop Pole, Bilston, West Midlands was a “comfortable modern pub with a blank interior”. Some kind of vacuum perhaps!

Non beer drinkers might be encouraged to note that the Crown, Sarre, Kent was a “historic cherry brandy house” with its “own brand from a 300-year-old recipe”. More basic attractions were available at the Lord Clyde, Greenwich, Greater London, with its “interesting gents toilet” while last, but certainly not least, the Lansdowne, Camden, Greater London purveyed “expensive ale every night and strip shows most nights”. I suppose it’s what turns you on!

I hope you enjoy your tour of our excellent drinking establishments. No doubt you too will see and hear odd things for the memory bank, whilst enjoying the best of British beers... or cherry brandy for that matter!

Ken Hargreaves

REPRINTED FROM ‘PIERS AND PINTS’
BLACKPOOL AND FYLDE’S LOCAL GUIDE.



The Best News of the Summer

available from late June 1996

A new range of traditional and speciality beers
Suffolk's newest and most progressive Brewery
proudly presents

Best Bitter
Strong Bitter
Wheat Beer
Fruit Beer

with more quality beers
coming through the summer

Available at fine Freehouses across the capital

*For further information, or if you would like to
visit our Brewery at the 14th-century St. Peter's Hall*

contact:

Richard Eyton-Jones or Alistair Burnett, St. Peter's Brewery Co. Ltd.
St. Peter's Hall, St. Peter South Elmham, Bungay, Suffolk NR35 1NQ

Tel: 01986 782322 Fax: 01986 782505

MICHAEL JACKSON'S – POCKET BEER BOOK 1997

Michael Jackson's Pocket Beer Book is awaited with great anticipation each year by a multitude of fans, from the connoisseur to the casual drinker. Containing up-to-the-minute reports about beers from the UK and around the world, readers know that they will receive the most authoritative information about the fast-changing beer scene.

Compiled from the author's relentless world-wide brewery investigation, *Michael Jackson's Pocket Beer Book 1997* is a comprehensive encyclopaedic guide to every style of beer available. Divided according to country and region, each entry in this expanded and updated 1997 edition is also related to a particular brewery.

As well as a profiles of each brewery, tasting notes are included for the more than 1,500 beers. An extensive glossary of terms and styles, in the book's introduction, adds ease of usage to this enthusiastically written unbiased handbook. Advice on visiting specialist restaurants, inns and bars to savour the author's recommendations make this an invaluable guide for anyone who is serious about beer.

The authoritative, yet frank style of this definitive reference guide will enable all readers to take advantage of the boundless knowledge of the world's top beer expert for themselves.

Michael Jackson, winner of the Glenfiddich Trophy, André Simon and Gold Tankards Awards, as well as a special honour from the Prince of Belgium for services to the country's beers, is the world's foremost writer on beer. Publishing and broadcasting internationally, he is also advisor to many breweries around the world. What is more, Michael Jackson's comment and opinions have prompted the appearance of dozens of new beers in this country's pubs and supermarkets. He is the author of the *Beer Companion* and *The Bar and Cocktail Book*, both also published by Mitchell Beazley.

Michael Jackson's *Pocket Beer Book 1997* is published by Mitchell Beazley on 16th September, price £8.99. Michael Jackson will be on tour from 21st to 24th October. For more information please contact Sarah Thorowgood at the Mitchell Beazley Press Office Tel: 0171 225 9093.

ADNAMS AND THE HAND & RACKET, SW19

On Tuesday 13th August a brewer from Adnams will be visiting the Hand & Racket by Wimbledon Station SW19, to give a demonstration. He will be showing a glass-ended cask of bitter and giving a talk about draught beer and then tapping the barrel so customers can see what happens inside the barrel to the sediment. There will also be an opportunity to ask questions during the talk and afterwards.

The demonstration is due to commence at 8.30pm and further details can be obtained from David Law at the pub on 0181-947 9391.

RIPOFF CORNER

If you are looking for a vision of the future, at least as far as prices are concerned, then you need go no further than Chelsea. The Princess of Wales in Dovehouse Street has recently reopened after refurbishment and been renamed POW. It is now mainly food oriented but still sells Courage Directors Bitter at £1.75 a half - yes that is per HALF PINT. Not surprisingly, they do not serve anything in pints.

Advertise in next month's

LONDON DRINKER

and get your message direct to the brewers,
pub owners, licensees, festival organisers, pub
regulars and drinkers of London and beyond

Call now, day or evening, 7 days a week

BARRY TILLBROOK

0181 989 7523

continued from page 11

reproduced and illustrated that the brewery expected some customer resistance. Wetherspoons on the other hand were proudly announcing the investing of a further £4m in opening six further outlets by the end of the year bring the total to forty.

That's all for this month, see you at Olympia between August 6th and 10th.

Ian Amy

FULLER'S NEW EXPORT DEAL

In July Fullers announced that they had signed a deal with Paulaner North America Corporation (PNA) to become their sole importer into the USA. Fullers had previously worked with Grolsch Importers Inc. for over five years but Grolsch has been reorganised and that arm wound down so they had to look elsewhere.

Paulaner is a highly respected Munich based brewer which after 350 years of brewing is one of the largest in Bavaria. It is not well known in Britain apart from its Hacker-Pschorr wheat beer but it rates in the top ten of Germany's 1,400 or so breweries for distribution, overall production and sales. They export actively to 36 countries.

PNA was formed in 1990 to handle sales to America and has grown into a substantial company based in Denver Colorado. As well as their own products, the 14 strong sales force will be promoting Fuller's key brands London Pride and ESB as well as four of the seasonal ales: Old Winter Ale, India Pale Ale, London Porter and Summer Ale. Fullers are also hoping to find a market for their only bottle conditioned product,

the 1845 Ale which was first produced to celebrate their 150th anniversary last year and which was hopped by His Royal Highness The Prince of Wales. This will provide a far wider selection of Fuller's beers to the American market than has ever been available before.

The importers are very optimistic about the prospects for Fuller's beers and believe there is an enormous potential for their brands. Sales Director, Richard Fuller is reported to be delighted with the deal, "Both companies have generations of brewing history behind them and both are committed to producing and marketing quality products. We are looking forward to working with Paulaner in what I am sure will be a highly successful relationship. The USA has huge potential for imported beers and we are very excited about our future there."

To support Fullers in America PNA have taken on Rob Willcock, who was Fuller's Export manager before emigrating to the States, as the Fuller's Brand Director and whose knowledge of the brewery's products will be invaluable.

**Landlords - do you value your CAMRA
Good Beer Guide entry?**

**If so, rip out those fake handpumps
and install an ethical cider from an
ethical company...**

CIDER WITH ROSIE

telephone 0181 406 1411

fax 0181 406 1412

**Cider With Rosie - the company that does
not stock Bulmers or Scrumpy Jack**

ENFIELD & BARNET CAMRA WEEKEND TO BATEMAN'S BREWERY

Saturday 1st June

I was actually picked up at the bottom of my road at 7.40 in the morning! The weather was slightly chilly and overcast but the sun shone later on. I ploughed through all GBG entries for Lincolnshire on the coach and we finally arrived at Bateman's Brewery in Wainfleet bang on time at 10.45. We were greeted by "Cheerful Charlie" our tour guide, a "Lincolnshire Poacher" of excellent brewery knowledge.

The brewery is smaller than most of us had imagined and is very much a case of "If it has worked for the last sixty years, why change it?". Most of us being hardened brewery visitors, we whizzed round the brewery at a reasonable speed to the most important area, the sampling room. This is in fact in an old windmill and next to it is a small but fascinating brewery museum.

Bateman's is one of thirty seven independent breweries in the country, discounting the many micro-breweries; it is well known and successful having resolved a family feud of almost three years which could very easily have seen its demise.

We greatly enjoyed the hospitality of the sampling room; we had a free choice of all the current Bateman's portfolio including the latest "Mr. George Special", "Hedgerows", brewed with elderflowers. The brewery shop (or should I say cupboard) was open - I bought a Victorian style jug with a picture of the brewery on it. Finally, after a little bit of moaning, we bade farewell to the brewery at about 1.30pm.

We all got back on the coach but did not go far as we stopped at the Red Lion, a Bateman's pub just up the road in Wainfleet for a lunch of pie, mushy peas and chips, occasionally dipping into a "Hedgerow". Following lunch and after we had sorted out our accommodation (Twenty seven of us in three Bateman's pubs within three minutes of each other) some of us got back on the coach and scampered off to Skegness. SKEGgy - the same could be said for the beer (once you get past the bouncers on the door) - sticks of rock, donkey rides, yes, but beer? No. We got on a

train to Boston; no tea but "Kimberley Classic".

Boston is an amazing contrast to Skegness; a charming, largely unspoilt little town on the River Witham. All five Good Beer Guide listed pubs can be highly recommended (I should hope so -that's what it's for! Ed.) and we particularly enjoyed the Hardys & Hansons at the Golden Lion. It was a sheer miracle that we actually left Boston; we were under the clear impression that the last train back to Wainfleet was at five past nine, not five to nine. A spur of the moment piece of research found our calculation to be wrong.

Relieved to be back in Wainfleet without having to resort to a taxi or a search party, we were hungry. As luck would have it, Wainfleet boasts quite possibly the best fish and chip shop I have ever been to - coal fired. Enormous portions were greedily eaten sitting on the bench across the road from the shop; it was just a pity that we did not have a beer to wash it down with at the time. This was soon rectified though, when we went straight to another Bateman's pub, the Jolly Sailor, where we found almost everyone we knew and again a full range of Bateman's beers. No-one has the faintest idea what time we left there but at least there were no problems with last trains or buses. Whether everyone found their correct room (or pub) is a different matter.

Sunday 2nd June

Believe it or not, I was up before eight. I was sharing a room with two others and one became "mother" and made us all a "cuppa" before the three of us went for a short walk to take more photos of the brewery before breakfast.

Wainfleet is a small village that is set in a time warp; not the eighties, nor the seventies but the early fifties - an Ealing comedy set in Lincolnshire. It is a beautiful place with ducks, ponies, little shops, pubs - and a brewery. There's also a local museum. The only irritating thing was the clock in the market place that struck on the hour, every hour!

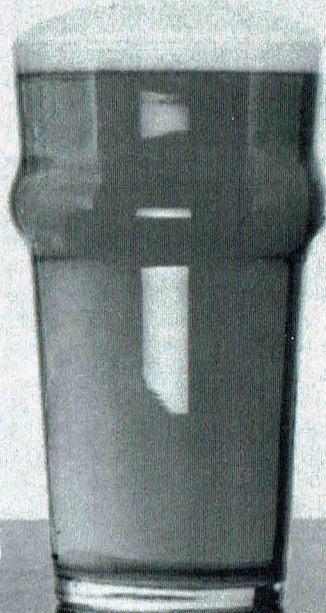
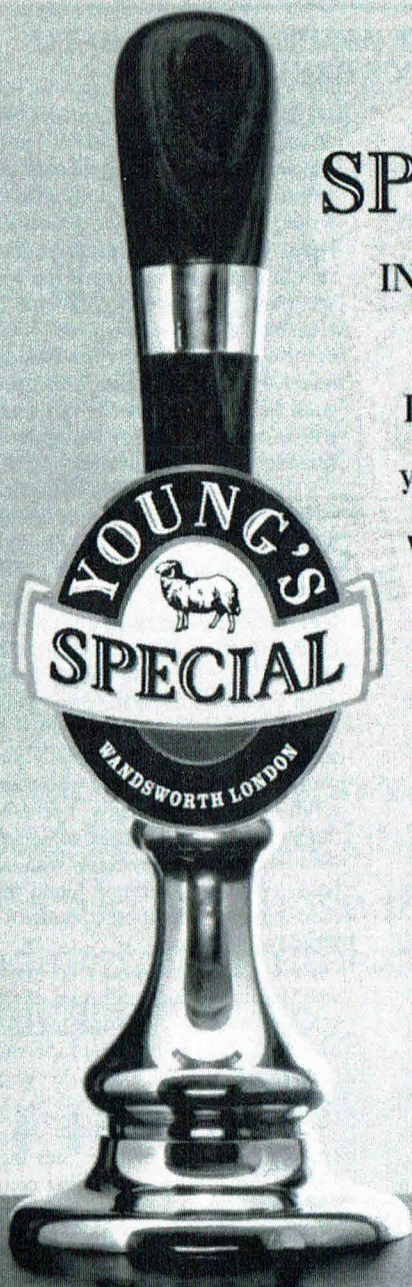
Breakfast was shortly after nine; bacon, eggs, fried bread, tomatoes and Lincolnshire

continued on page 33

WE SPECIALISE

IN EVERY CORNER OF
THE COUNTRY

If your Landlord doesn't
yet stock this famous ale,
we can advise on supply
on the Young's helpline



Young & Co.'s Brewery
Telephone: 0181-870 0141

continued from page 31

sausages. Then all too soon it was time to leave our "Brigadoon" before the vaguely alcoholic mist cleared.

However we weren't driving straight back to the outer entrails of Enfield. We'd bribed the driver to take us to Grantham; yes where that woman came from (as well as Isaac Newton - Ed). No sign of a certain greengrocer's shop but certainly the signs of pubs. The trouble was though that, being a Sunday, several were closed! Also, one that had been recommended, the Angel & Royal Hotel, turned out only to have Courage Best or Directors (good old Suvven beers), but the sun shone. Having lost "Brigadoon" we found "Shangri-la", or the Chequers to be more precise. Quite a find, in the Market Place, a Good Beer Guide entry and almost the perfect pub. Six different beers on handpump and only one we had ever heard of (That's saying something!). Also the CAMRA hippies among us relived our early beer drinking days with Bob Dylan and Cat Stevens on the juke box. Supping Belvoir Old Dalby, Oakham JHB and Tom Woods Old Timber we decided to make it Enfield & Barnet Pub of the Year.

Robin Forshaw-Wilson
Enfield & Barnet Branch,
CAMRA

ANNIVERSARY FESTIVAL

A popular couple who are friends of many a London CAMRA member are to hold a beer festival to celebrate their first anniversary at their pub.



Paul and Jan Osgood are hosting the festival at The Waterloo Arms, Waterloo Road, Freemantle, Southampton over 6-8th September (12 noon-11pm).

The Waterloo Arms is a Hop Back Brewery house and five of that company's beers will feature at the festival, alongside 12 guest ales and a real cider. A roaring trade can also be expected for Jan and Paul's famous range of exotic sausages.

"We're expecting quite a few friends from CAMRA in the capital," said Paul. "We often have visits from groups and we sell lots of London Drinkers as a result too!"

The best way to reach the Waterloo Arms is by three-minute taxi (approx £2.50) from Southampton Central Station. Call 01703-220022 for further details and advice of local B&B.

BRANCH CONTACTS

| | | |
|---|---|--|
| LONDON PUBS GROUP | JEFF PRIMM | 0181-683 3832 (H) 0171-973 3096 (W) |
| BROMLEY CROYDON & SUTTON EAST LONDON & CITY | See SOUTH EAST LONDON PAUL EVERITT STEPHEN HARRIS | 0181-686 5053 (H & W) 0181-519 0163 (H) 0171-270 8729 (W) |
| ENFIELD & BARNET KINGSTON & LEATHERHEAD NORTH LONDON | DEREK SMITH BRIAN BADE ALISON COX | 0181-805 1436 (H & W) 0181-549 7486 (H & Fax) 0181-742 0498 (H) 0181-746 8148 (W) |
| RICHMOND & HOUNSLOW SOUTH EAST LONDON | ALISTAIR BLACK ANDY CAMROUX | 01932 780823 (H) 0181-854 1538 (H) 0181-331 8459 (W) e-mail: A.Camroux@gre.ac.uk |
| SOUTH WEST ESSEX SOUTH WEST LONDON WATFORD & DISTRICT | ANDREW CLIFTON MARTIN BUTLER TONY SMITH | 01708 765150 (H) 0181-542 3158 (H,W & Fax) 01923 221155 (H & W) Fax: 01923 218625 |
| WEST LONDON WEST MIDDLESEX | DI KEHOE DAVE O'DRISCOLL | 0171-218 3141 (W) 0181-427 7498 (H) 0171-725 3035 (W) |

FESTIVAL ALE – A MISSION IMPOSSIBLE?

The Mission, if accepted, was to brew an exceptional beer for the Great British Beer Festival. A 5.4%, lemon coloured ale incorporating an intensely flowery/minty/grassy hop style with a retronasal aroma, which would be moderately bitter – difficult, yet not a mission impossible.

It would take a highly skilled team to pull it off and a location worthy of such a challenge. The location turned out to be none other than Bishops Brewery, the south London based brewers, themselves no strangers to uniquely hoppy ales. As for the team selected, it would have to include the 1996 Beer Writer of the Year and Evening Standard journalist Andrew Jefford, upon whose recipe the beer would be based; Alistair Hook from Freedom Brewery and Brewers Guild, who would turn the recipe into reality and Andrew Bishop who would facilitate the project and co-brew.

Andrew Bishop said of the project, “It was a complex list of requirements which would be quite tricky to convert into a one-off beer; it was also heavily hopped to produce the

right aromas - 10lbs were used in the 3 barrel brew, which is more than even we use!” Andrew was of course referring to Bishops’ generous hopping policy.

The ale will probably be called “EROS ALE”, so named after the Evening Standard’s logo and the idea of brewing came from CAMRA’s own Steve Cox. Andrew Jefford had covered the GBBF for the last few years and was searching for a new angle when Stephen suggested his own brew. Alistair Hook then became involved and introduced the idea to Bishops Brewery who leapt at the chance to become involved in the biggest event in the festival calendar but there was also bad news for the micro, formed in 1993, as Andrew Bishop explained: “Unfortunately our own beers were not considered for this year’s festival because of our late switch to full mash in April of this year, but it was great to be involved in any way possible - and of course there is always next year.”

As for the Mission’s chances of success, Andrew concluded, “Even Tom Cruise would be happy with the results!”

IN 200 YEARS WE’VE NEVER SOLD OUT.

Since 1799 the name Greene King has been synonymous with fine ales. Over all those years, we’ve fiercely defended our independence and our brewing traditions. It means we’ve been able to consistently produce some of the finest ales in the country. We haven’t sold out. But our beers often do.



BEER BRIEFING

LONDON BEER GUIDES UPDATE 116

This month we record a number of new bars in the EC1 area, only two of which dispense real ale. Fullers have acquired a pub from Yates in W1 Mayfair and Shepherd Neame have bought a pub in Bromley. Two more pseudo-Irish conversions from Bass have been reported.

The numbers in brackets after each entry refer to the page number in the following guides: E - East London & City Beer Guide, 3rd edition; K - 'Real Ale Drinkers Guide to Kent Pubs', 8th edition; N - North London Beer Guide, 3rd edition; SE - South East London Pub Guide, 4th edition; 3SE - South East London Pub Guide, 3rd edition; SW - Real Beer in South West London; W - Real Beer in West London; X - Essex Beer Guide, 8th edition. U refers to earlier updates.

If you would like to report changes to pubs or beers please write to: Beer Guides Updates, 2 Sandtoft Road, London SE7 7LR.

NEW & REOPENED PUBS & PUBS CONVERTED TO REAL ALE

CENTRAL

EC1, DOME, 61 Charterhouse Street. No real ale. Free House/cafe bar in former commercial premises.

EC1, HARROW, 64 Compton Street. Reopened after 5 years and renamed **COMPTONS**. No real ale. Now a Free House, ex Grand Met (Watney). (E17)

EC1, LONGROOM (THE), 18/20 St. John Street. Adnams: Bitter (G). New "bar & restaurant" opened in October 1995. Despite off-putting menu at door, more a bar than restaurant with wood panelled walls, polished floor, wooden tables and chairs etc. Premises previously a wholesale meat store. Blackboard advertises menu, beers etc. Open Mon-Fri 12-11, closed weekends.

EC1, ST. JOHN, 26 St. John Street. Young: Bitter, Special. Bar and bakery opened in October 1994 in former meat smoke house, latterly commercial premises. Separate restaurant at front. Bar is carved out of covered courtyard between buildings. Bare floors, tables and chairs in spartan style. Small bakery sells fresh bread, baguettes, pain au raisin etc. Bar menu includes bloodcake & egg, skewered snails and a bowl of peas! Note correct name - sign reading Bakery/Bar merely advertises the facilities and is not the title. Open Mon-Sat 11-11, Sun 12-3.

EC4, SUGAR LOAF, 64 Cannon Street. Renamed **O'NEILLS**. Draught Bass. Converted to pseudo-Irish theme with all the usual "attributes". (E54)

WC2, DOME, 32 Long Acre. Free House/cafe bar in former shop premises.

SOUTH EAST

SE1, WORLD TURNED UPSIDE DOWN, 145 Old Kent Road. No real ale, unexpectedly reopened as a pub. (SE41, U109)

SOUTH WEST

SUTTON, MORITZ WINE BAR, 2 St. Nicholas House, St. Nicholas Road. No real ale. A Free House.

PUBS CLOSED OR CEASED SELLING REAL ALE

CENTRAL

EC1, BLUE POSTS, Renamed **JACOMOS**. Converted to cafe bar style, H removed. Breakfast now served 7.30-10am. (E13, U67)

SOUTH EAST

SE1, ROYAL OAK. Phoenix, closed, future uncertain. Rumoured to be acquired by Harveys. (SE31, U112)

SE5, DUKE OF CLARENCE. Bass Charrington, closed, future uncertain. (SE57)

SE13, ROEBUCK. Whitbread. H removed. Late night music venue has opened downstairs named **VOLTZ BAR**. Sad demise of once thriving Fullers pub. (SE121)

SOUTH WEST

BEDDINGTON, GRANGE. Boddington (Henrys Table), H removed. (U77)

RICHMOND, DRUMMONDS. Bass Charrington, closed, future uncertain. (SW71, U111)

OTHER CHANGES TO PUBS & BEER RANGES

CENTRAL

EC4, LONDON STONE. Renamed **VINO VERITAS (CANNON STREET)**. -Beers listed. +Courage: Best Bitter. +Theakston: Best Bitter, XB. (E50, U106)

W1(May), BURLINGTON BERTIE. Renamed **O'NEILLS**. -Beers listed except Draught Bass. Yet another pseudo-Irish conversion complete with off-the-shelf "Irish" bric-a-brac. Real ale not always available. (W38, U75, U90, U101)

W1(May), YATES'S WINE LODGE. Renamed **FULLERS ALE LODGE**. -Ruddle: Best Bitter. +Fuller: London Pride, ESB, seasonal beer (currently Summer Ale). Acquired by Fullers from Yates in May. One of the original two Yates pubs in London before the current expansion (The other in the Strand was converted to an Italian restaurant in the late '70s). Painted wood panelled walls and bare floors. Food. Open Mon-Fri 11-11, closed weekends. (W40, U90)

WC2, NAGS HEAD. -McMullen: Strong Hart, Special Reserve. +Draught Bass. +McMullen: Gladstone Bitter, seasonal beer (currently High Summer Bitter, 4.6%). (W55, U50, U92)

SOUTH EAST

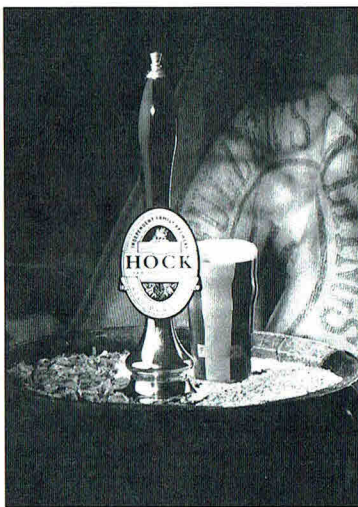
SE13, PLOUGH. Renamed **PITCHERS**. -Guest beers. +Fuller: London Pride. +Marston: Pedigree. Appears to be the latest Whitbread theme, described outside as a "Sports Bar" and "Bar & Diner". (SE121)

continued on page 38



INDEPENDENT FAMILY BREWERS SINCE 1845

Fuller's pubs are on the march. Through the purchase of a set of old NatWest banks Fuller's has been able to continue its move into areas where it has never gone before. By November four new Ale & Pie sites will have opened in Bromley, Sutton, Croydon and Vauxhall Bridge Road, all serving the full range of Fuller's award winning ales together with a delicious range of pies. Further sites have also been bought in



Southwark and also in Avery Row, just off Regent Street, Fuller's is now the proud owner of the first Fuller's Ale Lodge, having bought the Yates' Wine Lodge located there. Four Fuller's beers will be represented at the GBBF this year, London Pride, ESB, Chiswick Bitter and Summer Ale. If it all gets too much at Olympia, remember there are a number of Fuller's pubs nearby that would be delighted to welcome you. They are of course the Warwick Arms, the Blackbird, the Stargazey, the Salutation, the Churchill Arms and Latymers. For those of you who like to eat out but get frustrated by the lack of ale on offer in restaurants, Fuller's may just have the answer. They have produced

a smart non-returnable 330ml bottle. London Pride, ESB and Golden Pride are available in this new bottle with a view to introducing it into the bar, restaurant and hotel markets to sit in the cold cabinet and rival the premium packaged lagers that are usually on offer. Keep your eyes open! Depressing though it may be, with the arrival of August thoughts inevitably start to turn towards Autumn. Continually thinking of their drinkers,

Fuller's is set to reintroduce Hock as a harvest ale. In the past, it has been sold in May to coincide with CAMRA's Mild Month but sales were disappointing and so they have decided to try it in the season for which it was traditionally brewed – Autumn and harvest time. A sweet, dark beer to inject energy into the labourers of Chiswick as they reaped the crops in nearby fields. In honour of our forebears you are encouraged to have a pint or two of Hock to relax after your own hard day's work. Hock will be available from 9th September until 11th October. One final word, Fuller's has increased the number of guided tours. CAMRA members are FREE – call 0181 996 2063 for further details!

10TH CHAPPEL BEER FESTIVAL

As usual, the Essex Branches of CAMRA are getting together with the East Anglian Railway Museum to hold their regular All Essex beer festival at the EARM headquarters at Chappel and Wakes Colne Station from Wednesday 4th to Saturday 7th September, opening from 11.00am to 4.00pm and 5.00pm to 11.00pm each day. Over 150 beers will be available in two main bars situated in the former Goods Shed and the Restoration Shed. In addition a railway vehicle will form the "Shunters Arms Bar" and a restored coach will be used as a lounge bar. There will also be a foreign beer bar run by the "Big Ears" beer agency.

Entry costs £1.50 for lunchtime sessions while evening sessions cost £1.50 (Wed), £2.50 (Thu), £3.50 (Fri) or £2.00 (Sat). The entry charge includes entry to the railway exhibits during daylight hours and CAMRA members and Friends of the East Anglian Railway Museum are admitted free at all times on production of their membership cards.

Chappel is located on the "Lovejoy Line" (BR Marks Tey to Sudbury branch line). It has a roughly hourly service and is off the

Liverpool Street to Colchester main line. We hope that BR will run an additional late train from Chappel to Marks Tey and Colchester at around 11.00pm from Wednesday to Saturday. This train should give a connection back to Liverpool Street from Wednesday to Friday but NOT Saturday.

Coaches and minibuses are welcome and big discounts are available to pre-booked parties of non-members (bookings to the museum on 01206 242524). If you are coming by road Chappel & Wakes Colne Station is just off the A604 near the viaduct and parking is free. For parking purposes would all coach party organisers please advise the museum which session they are attending and their approximate expected arrival time.

For CAMRA and EARM members there will be a "Members & Friends" session between 7.00 and 11.00pm on Tuesday 3rd September. Limited free camping is available but priority will be given to beerex staff. Extra staff are required again this year; if you would like to work please contact Graham Platt on 0181-220 0215 (H).

STATION ARMS BEER FESTIVAL

39 Station Road, Southminster, Essex. Tel: (01621) 772225

AUGUST 23 - 24 - 25 - 26

Fri: 5.30pm-11.30pm; Sat: Noon-11.30pm

Sun: Noon-11.30pm; Mon: Noon-11.00pm

25+ Real Ales • Traditional Ciders • BBQ • Live Entertainment

- only 200 yards from Southminster railway station

Last train back to Liverpool Street (change at Wickford)

Fri: departs 22.44; Sat: departs 22.47; Sun: departs 22.16; Mon: departs 22.44



BEER BRIEFING
LONDON BEER GUIDES UPDATE 116
continued

SE15, PRINCE OF WINDSOR. Renamed **HAIRY LEMON (PRINCE OF WINDSOR)**. Now a Free House, ex Grand Met (Courage), still fizz. Old name still displayed on hanging sign. (SE138)

SE18, WELLESLEY. Renamed **WELLESLEY ARMS.** +Courage: Best Bitter. Belhaven signs removed, current ownership unclear. (SE175)

SE23, PIE & KILDERKIN. Renamed **HOB-GOBLIN.** -Wychwood: Shires, Dogs Bollocks. +Courage: Directors Bitter. +Wadworth: 6X. +Wychwood: Special (4.0%), Fiddlers Elbow (4.2%). Wychwood beers may vary. (SE207, U102)
BROMLEY, ANGLESEY ARMS. -Beers listed. +Shepherd Neame: Bitter, Best Bitter. Acquired by Shepherd Neame, ex Grand Met (Courage). (3SE216, U70)

CROYDON, HUNGRY HORSE. -Beers listed. +Boddington: Bitter. +Draught Bass. +Webster: Green Label. Formerly **PROPELLER**. (3SE248, U55, U98, U101)

SOUTH WEST

SW13, GARDEN HOUSE. -Adnams: Bitter. Formerly **BOILEAU ARMS**, "originally" **OLD RANGOON**. (SW43, U50, U108)

SW14, PICKLED NEWT. Reverted to **JOLLY MILKMAN**. A victory for local campaigners who have been fighting to get the original name of the pub reinstated since the Magic Pub Co bought and renamed it. (SW45, U98, U111)

KINGSTON, FLAMINGO BREWERY CO. Now owned by Mercury Taverns, ex Saxon Inns. (U34, U43, U77)

KINGSTON, ROYAL BOROUGH ARMS. -Webster: Yorkshire Bitter. +Courage: Best Bitter. +Wadworth: 6X. (SW66)

SUTTON, HEDGHOG & HOGSHEAD. -Belchers: beers listed. +Belchers: Bibi Best Bitter (4.2%), Flamin' Ale (ginger) (4.2%), Sugar'N'Spice (4.2%), Dina Might Blonde (4.6%), Sweet Sensation (4.6%), Taylor Made (4.7%), Newgate's Knecker (5.0%). All brewed at the pub. (U107)

WEST

TWICKENHAM, CROWN. -Flowers: IPA. -Wadworth: 6X. -Guest beer. +Fuller: London Pride. +Hogs Back: TEA. (W150, U77, U95)

TWICKENHAM, WHITE SWAN. -Young: Special. -Guest beer. +Courage: Best Bitter. (W151, U90, U94)

CORRECTIONS TO UPDATE 115

NEW & REOPENED PUBS & PUBS CONVERTED TO REAL ALE

W1(S), BLUE POSTS. +Inch's: Stonehouse Cider (G).

SE13, YATES'S WINE LODGE. Is a Free House.
SE20, PARK TAVERN. Should read Free House ex Charrington.

SW9, ATLANTIC. Should read ex Allied (Ind Coope), not Grand Met (Courage).

PUBS CLOSED OR CEASED SELLING REAL ALE

SW12, PUMP & RACKET. Should read **SW11. OTHER CHANGES TO PUBS & BEER RANGES**
SW9, COACH & HORSES. Address is 348 Clapham Road.

continued from page 3

regularly drinks in Young's and Fuller's pubs in Teddington. he told me that he had had a pint of London Smooth "every day this week and it is superb." I haven't yet acted on his advice to see if it really is as good as he says - I'm not in a hurry to spend £2.05 on a pint.

While I'm here I must issue another apology. I wrote the piece last month that said that Greene King had bought the Magic Pub Co for something over £400 million. The actual price was a bit under £200 million. I was right about Michael Cannon receiving some £70 million of this though. So what are the chances of Greene King throwing away all those silly names and the inappropriate bric-a-brac and turning them back into proper pubs with their original names reinstated. I suppose it depends to a certain extent on why Greene King bought the pubs in the first place; did they just want more pubs in areas where they were not well represented or do they actually like the Hungry Horse, Rat & Carrot and Pickled Newt concepts? Only time will tell.

Andy Pirson

ps: I have now checked; my local Youngs pub in Teddington does not have nitrokeg.

LONDON DRINKER is published by the London Branches of CAMRA, the Campaign for Real Ale Limited.

Editors: Chris Cobbold, 25 Valens House, Upper Tulse Hill, London SW2 2RX. Tel: 0181-674 0556; Andy Pirson, 13 Belvedere Close, Teddington Middlesex, TW11 0NT. Tel: 0181-943 5344; Ian Amy, 89 Woodfield Road, Thames Ditton, Surrey, KT7 0DS.

SUBSCRIPTIONS: £7.00 for 11 editions should be sent to: Stan Tompkins, 122 Manor Way, Uxbridge, Middlesex, UB8 2BH.

ADVERTISING: Barry Tillbrook. Tel: 0181-989 7523.

Please be sure to send all Diary material to Andy Pirson.

Printed by Ark Litho Ltd., Silverglade, 405 Leatherhead Road, Chessington, Surrey, KT9 2QL

continued from page 2

OUTLETS, SOUTH WEST and WEST PUBS

SW1 BARLEY MOW
SW1 BUCKINGHAM ARMS
SW1 FOX & HOUNDS
SW1 MORPETH ARMS
SW1 ORANGE BREWERY
SW1 ORANGE KIPPER
SW1 PAVIOURS ARMS
SW1 RISING SUN
SW1 ROYAL OAK
SW2 HOPE & ANCHOR
SW2 CROWN & SCEPTRE
SW3 COOPERS ARMS
SW3 CROWN
SW3 SURPRISE
SW4 BEDFORD ARMS
SW4 ROSE & CROWN
SW6 DUKE OF CUMBERLAND
SW6 WHITE HORSE
SW7 ANGLESEA ARMS
SW8 OLD RED HOUSE
SW8 PRIORY ARMS
SW8 SURPRISE
SW10 FERRET & FIRKIN
SW10 KINGS ARMS, 190 Fulham Rd
SW11 BEEHIVE
SW11 DUKE OF CAMBRIDGE
SW12 NIGHTINGALE
SW12 PRINCE OF WALES
SW13 BULLS HEAD
SW13 COACH & HORSES
SW13 RED LION
SW13 ROSE OF DENMARK
SW14 HALFWAY HOUSE
SW14 HARE & HOUNDS
SW15 FOX & HOUNDS
SW15 GREEN MAN
SW15 RAILWAY
SW16 PIED BULL
SW17 CASTLE
SW17 J.J. MOONS
SW18 BREWERY TAP
SW18 OLD SERGEANT
SW18 SPOTTED DOG
SW18 SPREAD EAGLE
SW18 STAR & GARTER
SW19 BREWERY TAP
SW19 KINGS HEAD
SW19 PRINCE OF WALES, Morden Road
SW19 PRINCESS ROYAL
SW19 SULTAN
SW19 TRAFALGAR
SW19 WIBBAS DOWN INN
CARSHALTON, GREYHOUND
CARSHALTON, RAILWAY
TAVERN
CARSHALTON, WINDSOR
CASTLE
CHESINGTON, NORTH STAR
CHIAM, RAILWAY
HAM, HAND & FLOWER
KEW, COACH & HORSES
KINGSTON, ARTFUL DOGGER
KINGSTON, CANNIBY ARMS
KINGSTON, COCOANUT
KINGSTON, CRICKETERS
KINGSTON, DRUIDS HEAD
KINGSTON, FIGHTING COCK
KINGSTON, FLAMINGO BREWERY
CO.

KINGSTON, KELLY ARMS
KINGSTON, NEWT & FERRET
KINGSTON, PARK TAVERN
KINGSTON, RAM
KINGSTON, SPRING GROVE
KINGSTON, TWO BREWERS
KINGSTON, WILLOUGHBY
ARMS
KINGSTON, WYCH ELM
MITCHAM, QUEENS HEAD,
Cricket Green
MITCHAM, WHITE LION OF
MORTIMER
MORDEN, WETHERSPOONS
NEW MALDEN, ROYAL OAK
RICHMOND, BELVEDERE
RICHMOND, DYSARTS
RICHMOND, ORANGE TREE
RICHMOND, SHAFTESBURY
ARMS
RICHMOND, TRIPLE CROWN
RICHMOND, WATERMANS ARMS
RICHMOND, WHITE CROSS
SURBITON, DENBY DALE
SURBITON, NEW PRINCE
SURBITON, RISING SUN
SUTTON, FIELDER & FIRKIN
SUTTON, MOON ON THE HILL
SUTTON, NEW TOWN
WALLINGTON, WHISPERING
MOON
W1 BEEHIVE, 7 Homer Street
W1 CLEVELAND ARMS
W1 JACK HORNER
W1 MOON & SIXPENCE
W1 MORTIMER ARMS
W1 PRINCE ALFRED
W1 WESTMORELAND ARMS
W1 WINDMILL
W2 ARCHERY TAVERN
W2 ROYAL STANDARD
W3 KINGS HEAD
W5 RED LION
W5 ROSE & CROWN
W5 WHEATSHEAF
W6 ANDOVER ARMS
W6 BROOK GREEN HOTEL
W6 RICHMOND ARMS
W10 VILLAGE INN
W11 FROG & FIRKIN
W12 MOON ON THE GREEN
W13 DRAYTON COURT
W13 THE FORESTER
W14 WARWICK ARMS
BRENTFORD, MAGPIE & CROWN
CRANFORD, QUEENS HEAD
FELTHAM, MOON ON THE
SQUARE
HAMPTON, WHITE HART
HAMPTON COURT, KINGS ARMS
HAMPTON WICK, WHITE HART
HAYES, MOON UNDER WATER
HAYES END, MOON & SIXPENCE
HOUNSLOW, BEAVER
HOUNSLOW, CROSS LANCES
HOUNSLOW, MOON UNDER
WATER
HOUNSLOW, SUN
HLEWORTH, COUNTY ARMS
HLEWORTH, VICTORIA
SOUTHALL, BEACONSFIELD
ARMS
TEDDINGTON, LION

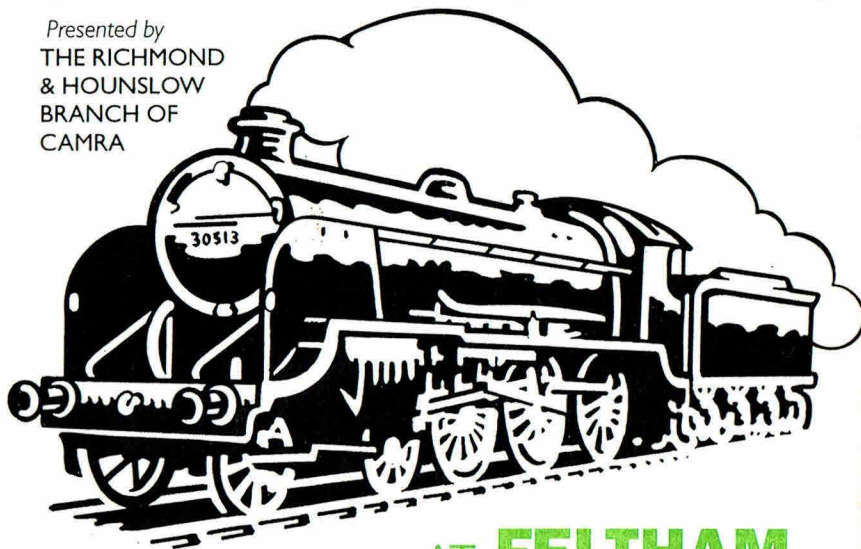
TEDDINGTON, QUEEN
DOWAGER
TEDDINGTON, RAILWAY HOTEL
TEDDINGTON, WALDEGRAVE
ARMS
TWICKENHAM, KINGS ARMS
TWICKENHAM, NELSON
UXBRIDGE, PRINCE OF WALES
WHITTON, ADMIRAL NELSON
WHITTON, WHITE HART
OFF TRADE
W11 Grogblossom
CLUBS
ISLEWORTH, Western Geophysical
Social Club
W1 Polytechnic of Central London
S.U. Bar, 104 Bolsover Street
OUTSIDE LONDON
ADDLESTONE, CRICKETERS
ASCOT, CRANBOURNE TOWER
BRIGHTON, EVENING STAR
BRIGHTON, SUSSEX YEOMAN
CATERHAM ON THE HILL, KING
& QUEEN
CHERTSEY, CASTLE
COLCHESTER, ODD ONE OUT
CROXLEY GREEN, SPORTSMAN
DENHAM (Bucks), LAMBERT
ARMS
EAST MOLESEY, KINGS ARMS
EGHAM, JOLLY FARMERS
EGHAM, PRINCE OF WALES
EGHAM, WHITE LION
KNEBWORTH (Herts), LYTTON
ARMS
KNOWL HILL (Berks), OLD DEVIL
LALEHAM, FEATHERS
LEWES, GARDENERS ARMS
MANCHESTER, JOLLY ANGLERS
MORTIMER WEST END (Hants),
RED LION
OUTWOOD (Surrey), DOG & DUCK
POTTERS BAR, CHEQUERS
READING, HOBGOBLIN
READING, HOP LEAF
READING, MONKS RETREAT
READING, THREE GUINEAS
ROTHERWICK (Hants), COACH &
HORSES
SALISBURY, WYNDHAM ARMS
STEVENAGE, RED LION
SOUTHAMPTON, WATERLOO
ARMS
STAFFORD, STAFFORD ARMS
STAINES, BEEHIVE
STAINES, CAVALIER
STAINES, PHOENIX
STOW MARIES (Essex), PRINCE
OF WALES
STRATFIELD SAYE (Hants), NEW
INN
SUNBURY, FLOWER POT
SUNNINGDALE, ROYAL OAK
TILLINGHAM (Essex), CAP &
FEATHERS
WALTON ON THAMES, REGENT
WATFORD, WEST HERTS SPORTS
CLUB
WEST HORSLEY (Surrey), KING
WILLIAM IV
WEYBRIDGE, PRINCE OF WALES
WORTHING, VINE
WRAYSBURY, PERSEVERANCE



THE FIFTH FELTHAM FESTIVAL OF DRAUGHT BEERS

(Ciders, Perries and Foreign Bottled Beers)

Presented by
THE RICHMOND
& HOUNSLOW
BRANCH OF
CAMRA





AT **FELTHAM**
ASSEMBLY HALL
HOUNSLOW ROAD, FELTHAM

Opening times

| | |
|------------------|------------------|
| Thursday 26 Sept | 5.30 to 10.30pm |
| Friday 27 Sept | 11.00 to 10.30pm |
| Saturday 28 Sept | 11.00 to 10.30pm |

 5 Minutes from **Feltham Station** (B.R.)

 **Bus Routes** 90, 117, 237, 285, 417 & 726 pass the door.

 Handy for Heathrow Airport.

Admission **£1.50** (£1.00 Friday Lunchtime)

CAMRA members admitted **FREE** at all times.

