

July 96

# LONDON



30p

# DRINKER



**THE DYSARTS**  
Petersham Road, Petersham

Photo by: Doug Scott

Vol 18

Produced by the London branches of the Campaign for Real Ale Ltd

No. 6

## WHERE TO BUY LONDON DRINKER

The following is a list of all the current outlets for London Drinker of which the editors have been informed. Full addresses are only given where there are two pubs of the same name in the same postal district.

### OUTLETS - EAST and SOUTH EAST PUBS

EC1 ARTILLERY ARMS  
EC1 BISHOPS FINGER  
EC1 MASQUE HAUNT  
EC1 O'HANLONS  
EC1 PHEASANT & FIRKIN  
EC1 ROSEBERRY  
EC1 SEKFORDE ARMS  
EC1 SHAKESPEARE  
EC3 SWAN  
EC4 BLACK FRIAR  
E1 LORD RODNEYS HEAD  
E2 CAMDENS HEAD  
E3 IMPERIAL CROWN  
E5 PRINCE OF WALES  
E8 LADY DIANA  
E9 FALCON & FIRKIN  
E9 ROYAL STANDARD  
E11 BIRKBECK TAVERN  
E11 GEORGE  
E13 VILLAGE  
E14 QUEENS HEAD  
E15 GOLDEN GROVE  
DAGENHAM, LORD DENHAM  
SE1 ANCHOR & HOPE  
SE1 COPPER  
SE1 FOUNDERS ARMS  
SE1 GEORGE TAVERN  
SE1 GOOSE & FIRKIN  
SE1 GRAPES  
SE1 HORNIMAN AT HAYS  
SE1 KINGS ARMS  
SE1 MARKET PORTER  
SE1 OLD BRIDGE HOUSE  
SE1 PRINCE WILLIAM HENRY  
SE1 SHIP, 68 Borough Road  
SE1 ST GEORGES TAVERN  
SE1 TRINITY ARMS  
SE1 WHEATSHEAF  
SE1 WHITE HART, Cornwall Street  
SE1 WINDMILL, 44 Lambeth High Street  
SE3 BRITISH OAK  
SE3 HARE & BILLET  
SE3 PRINCESS OF WALES  
SE5 FOX ON THE HILL  
SE5 PHOENIX & FIRKIN  
SE6 BLACK HORSE & HARROW  
SE6 TIGERS HEAD  
SE7 ANTGALLICAN  
SE8 CRYSTAL PALACE TAVERN  
SE8 DOG & BELL  
SE8 OLD MANOR HOUSE  
SE8 ROYAL GEORGE  
SE9 BANKERS DRAFT  
SE10 ADMIRAL HARDY  
SE10 ASHBURNHAM ARMS  
SE10 RICHARD I  
SE13 FOX & FIRKIN  
SE13 HOGS HEAD  
SE16 BLACKSMITHS ARMS  
SE16 MANOR TAVERN  
SE16 MOBY DICK  
SE18 COOPERS ARMS (Plaisted's)  
SE18 EARL OF CHATHAM  
SE18 ROSE'S (PRINCE ALBERT)  
SE18 VILLAGE BLACKSMITH  
SE19 ROYAL ALBERT  
SE20 MOON & STARS  
SE22 CRYSTAL PALACE TAVERN

SE25 ALLIANCE  
SE25 GOAT HOUSE  
SE26 DULWICH WOOD HOUSE  
ADDISCOMBE, CLARET WINE BAR  
BARKING, BARKING DOG  
BARKINGSIDE, NEW FAIRLOP OAK  
BEXLEY, BLUE ANCHOR  
CROYDON, ARKWRIGHTS WHEEL  
CROYDON, BUILDERS ARMS  
CROYDON, DOG & BULL  
CROYDON, FIDDLER & FIRKIN  
CROYDON, GEORGE  
CROYDON, PRINCESS ROYAL (GLUEPOT)  
CROYDON, ROYAL STANDARD  
ILFORD, GREAT SPOON OF ILFORD  
LOUGHTON, LAST POST  
PURLEY, FOXLEY HATCH  
SOUTH CROYDON, FIDDLER & FIRKIN  
SOUTH CROYDON, RAIL VIEW  
WALLINGTON, WHISPERING MOON  
**CLUBS**  
SE9 HOWERD CLUB  
SE13 LEWISHAM LABOUR CLUB  
SE18 PLUMSTEAD RADICAL CLUB  
CROYDON, RUSKIN HOUSE  
**OFF TRADE**  
E18 Gales Off Licence, 204 High Road, Woodford Green  
SE3 Bitter Experience, 129 Lee Road  
BROMLEY, Bitter End, 139 Masons Hill

### OUTLETS - WEST CENTRAL and NORTH PUBS

WC1 CALTHORPE ARMS  
WC1 CITTIE OF YORKE  
WC1 OLD MONK  
WC1 PAKENHAM ARMS  
WC1 PRINCESS LOUISE  
WC1 RUGBY TAVERN  
WC1 SUN  
WC1 THREE CUPS  
WC1 UNIVERSITY OF LONDON  
WC2 CROWN & ANCHOR  
WC2 FULMAR & FIRKIN  
WC2 GEORGE IV  
WC2 HOGS HEAD  
WC2 MARQUESS OF ANGLESEY  
WC2 MOON & SIXPENCE  
N1 179 UPPER STREET  
N1 COMPTON ARMS  
N1 EARL OF RADNOR  
N1 GEORGE & VULTURE  
N1 MALT & HOPS  
N1 MARQUESS TAVERN  
N1 PRINCE ARTHUR  
N1 WENLOCK ARMS  
N2 WELCH'S ALE HOUSE  
N4 TAP & SPILE  
N6 OLD GATE HOUSE  
N7 TAPPIT HEN  
N8 ELBOW ROOM  
N8 RAILWAY TAVERN  
N8 TOLL GATE  
N9 LAMB

N11 BANKERS DRAFT  
N12 TALLY HO  
N13 WHOLE HOG  
N14 NEW CROWN  
N16 EBOR ARMS  
N16 ROCHESTER CASTLE  
N17 ELBOW ROOM  
N17 NEW MOON  
N19 DOG  
N21 DOG & DUCK  
N21 HALF MOON  
N21 ORANGE TREE  
N22 STARTING GATE  
BARNET, MOON UNDER WATER  
BARNET, WHITE LION  
BARNET, YE OLDE MONKEN HOLT  
COCKFOSTERS, TRENT TAVERN  
EDGWARE, BLACKING BOTTLE  
ENFIELD, FALLOW BUCK  
ENFIELD, MOON UNDER WATER  
ENFIELD, OLD WHEATSHEAF  
NEW BARNET, BUILDERS ARMS  
NEW BARNET, LORD KITCHENER  
NEW BARNET, RAILWAY BELL

### OUTLETS - NORTH WEST PUBS

NW1 HEAD OF STEAM  
NW1 LORD NELSON  
NW1 QUINNS  
NW1 SPREAD EAGLE  
NW2 BEATEN DOCKET  
NW3 FLASK TAVERN  
NW3 THREE HORSESHOES  
NW4 CHEQUERS  
NW4 GREYHOUND  
NW4 PICKLED NEWT  
NW8 PRINCESS ROYAL  
NW9 J.J. MOONS  
NW9 MOON UNDER WATER  
NW9 WHITE LION OF MORTIMER  
NW10 COLISEUM  
NW10 GRAND JUNCTION ARMS  
NW10 OUTSIDE INN  
NW11 WHITE SWAN  
HAREFIELD, PLOUGH  
HARROW, MOON ON THE HILL  
HARROW WEALD, SEVEN BALLS  
HATCH END, MOON & SIXPENCE  
KENTON, NEW MOON  
NORTH HARROW, J.J. MOONS  
RUISLIP, J.J. MOONS  
SOUTH HARROW, J.J. MOONS  
STANMORE, MALT HOUSE  
WEALDSTONE, ROYAL OAK  
WEALDSTONE, SARSEN STONE  
WEMBLEY, J.J. MOONS  
**OFF TRADE**

N1 Beer Shop, Pitfield Street  
NW6 Grog Blossoms, 235 West End Lane

### CLUBS

NW4 HENDON SOCIAL CLUB, Middlesex University Bus. School

### OUTLETS - SOUTH WEST and WEST PUBS

SW1 BARLEY MOW  
SW1 BUCKINGHAM ARMS  
SW1 FOX & HOUNDS  
SW1 MORPETH ARMS  
SW1 ORANGE BREWERY

Continued on page 35



---

## EDITORIAL OR WHAT IS REAL ALE?

The actual definition of a real ale is relatively straightforward, but often misunderstood and, unfortunately, often blatantly flouted.

A real ale is a beer that is produced from natural ingredients, usually malted barley, hops and water, then fermented with yeast and matured in casks. Casks are then delivered to the pubs where the beer continued to mature. Before serving, the casks must be allowed to stand in the pub cellar for anything from a few hours to a couple of days to allow the beer to settle before being served. Real ale is served usually by the traditional hand pump, but can be served from a tap directly from the cask (known as gravity dispense), or by an electric pump. Simple isn't it? Or is it? Unfortunately, several things can be done to a real ale that make it no longer "real": Usually, as beer is served, the volume left is filled up with air as the cask is basically open to the cellar whilst beer is being served. Unfortunately this gives the product somewhat of a limited shelf life once the cask has been tapped as the air entering the cask will tend to oxidise the contents and the beer will "go off". This is not a problem if the beer is being sold at a reasonable rate, as it will sell out long before any significant oxidation has taken place. Some publicans, however, connect the beer up to a carbon dioxide (CO<sub>2</sub>) cylinders such that the beer is not replaced by air, but CO<sub>2</sub> gas. This greatly slows down the oxidation process, but the gas pressure above suppresses the beers' own natural CO<sub>2</sub> productions, often resulting in an over gassy pint that tastes very "tinny" due to the extra amount of CO<sub>2</sub> dissolved in it. This is no longer "Real Ale". Another thing to watch out for is what is termed "bright" beer. There is significant concern that some brewers are putting so little yeast into casks that little conditioning takes place in the cast at all. This again is not true real ale and the loss of taste in the beer should confirm this. It is at this point that mention needs to be made of what are called keg beers. These start life in the same way as real ales, but before they are put into "kegs" they are pasteurised and filtered. They are then sealed in keg containers and delivered to the bar by means of CO<sub>2</sub> gas pressure. Keg

beer is a dead product. It does not mature in the keg and often tastes weak, insipid and fizzy. There is a new form of keg beer that has arrived on the scene. This is the so-called "nitro-keg" beer. It is essentially the same as ordinary keg products, but is brought to the bar by a mixture of nitrogen and CO<sub>2</sub> gas. This produces the cascading foam affect that gives the false impression of a smooth creamy pint. Nitro-keg beers such as Caffreys and Kilkenny **are not real ales**, they are purely keg beers that are served in a different manner.

**Chris Cobbold**

---

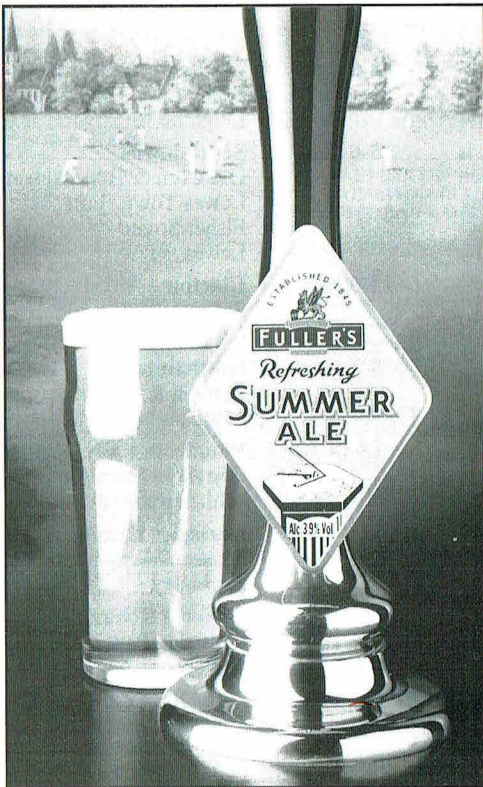
## FORTHCOMING FESTIVALS

- |                   |  |
|-------------------|--|
| <b>4-6 July</b>   | <b>4th Leighton Buzzard</b><br>Black Lion, High Street<br>Leighton Buzzard   |
| <b>5-6 July</b>   | <b>Southdowns</b><br>Old Corn & Hop Exchange<br>Lewes Town Hall,<br>Fisher Street<br>Lewes                           |
| <b>5-6 July</b>   | <b>Clacton</b><br>St James Hall<br>Clacton   |
| <b>5-7 July</b>   | <b>Southampton</b><br>Balloon & Flower Festival<br>Southampton Common  |
| <b>12-14 July</b> | <b>Woodcote Rally Beer Tent</b><br>Copyhold Farm (on B4526)<br>Whitchurch Hill                                       |
| <b>13-14 July</b> | <b>Horsham Historic Beer Tent</b><br>Sussex County Showground<br>Ardingley   |
| <b>14 July</b>    | <b>St Neots Riverside Festival</b><br>Riverside Park<br>St Neots   |
| <b>16-20 July</b> | <b>2nd All Essex Brew-Ha-Ha</b><br>Student Union Bar & Gym<br>Anglia Polytechnic University<br>Park Road, Chelmsford |
| <b>18-20 July</b> | <b>22nd Kent</b><br>The Cowshed, Merton Farm<br>Merton Lane, Canterbury  |
| <b>25-28 July</b> | <b>20th Cotswold</b><br>Postlip Hall<br>Tithe Barn, Nr Winchcombe,<br>Glos   |

*Continued on page 34*



INDEPENDENT FAMILY BREWERS SINCE 1845



*Fuller's Summer Ale has an abv of 3.9% and is available from June to September at the majority of Fuller's houses at around £1.65 per pint.*

With the weather as it is, it may not seem like summer, but Fuller's brewing team has decided that it most certainly is! From 3rd June to 30th August you can tantalize those taste buds with Fuller's Summer Ale, the Brewery's light, golden 3.9% summer seasonal offering. Try a pint, and remember, one swallow doesn't make a summer, so best have two, or three or ...!



---

## IDLE MOMENTS

Right. I hope you're ready – you're going to have to read this quickly because I haven't got much time. It's all right for you but I never seem to get any idle moments myself. Anyway, I haven't got time to gripe so let's get straight on with last month's number puzzle answers:

1. 16 Players in a Scrum in Rugby Union
2. 2 Classic Flat Races are Held at Newmarket
3. 21 is the Minimum Age for a Member of Parliament
4. 10 Pound Notes have Charles Dickens on the Back
5. 43 Chief Constables in England and Wales
6. 1 Pound is the Price of a Ticket for the National Lottery
7. 55 Broadway is the Address of London Transport
8. 3 of Henry the Eighth's Children Sat on the English Throne
9. 1690 Battle of the Boyne
10. 14 is the Isotope of Carbon Used in Carbon Dating

And to keep the momentum going, here are this month's number puzzles:

1. 8 AU make up the IL
2. 95 T of ML (N to the CD in W)
3. 2 B of the OT are N after W
4. 7 P are the M you can GA with a FS in S
5. 4 B in a G of C
6. 2 Y is the ML of a SS
7. 969 A of M
8. 63 C in the BA
9. 18 N of the A (to the AC) that IP
10. 151 N to D to R a F on BT

Now, how's the time going? Okay, I think I can squeeze in the brewery anagrams; you'll have to be quick though. Here's last month's answers. Don't mull over them, just read them and get on with this month's.

1. GET COAT      COTTAGE
  2. WINTERYGOTH      TEIGNWORTHY
  3. HIP BOSS      BISHOPS
  4. AH, HAG RUSHES      SARAH HUGHES
  5. RUM ODE      MORDUE
- And here, without further ceremony, they are:
1. A LUNCH ROBE

2. HARD OWLS
3. MAN LOT
4. AH! THERE
5. YES... NO... I CHUNDER

And next, for all you devotees (if such a thing can exist) of underground stations (I suppose that should be Underground Stations) it's time for the answers to last month's cryptic ones:

1. The girls on the eastbound route are the "County Set" – Essex Road
2. A widely dedicated church – All Saints
3. Little house from the mountains; any gnomes here? – Swiss Cottage
4. Old queen – Victoria
5. They cross the river in armour – Knightsbridge
6. Partitioned island – Cyprus
7. Old queen's husband – Prince Regent
8. Little church looks very clean – Whitechapel
9. The trees in these gardens were diseased – Elm Park
10. Dirty slippery slope – Mudchute

Now you might have realised that Underground stations are something of a fixed asset; like we don't get that many new ones and with East and West this, that and the other we'll be in danger of running out of usable ones before the Jubilee Line Extension gets finished. For this reason I've decided to ration them slightly and just let you have five a month from now on. All right, who cheered? All of you, was it?

1. Raised water's edge
2. Country seat in New England
3. Motor car
4. Pride of the North Circular Road Relegation League
5. I came to see the games but there was an exhibition

I was trying to think of something other than football grounds and people's real names for 5BY4 this month and, looking through my copy of British Hit Singles, it struck me that a number of singers have the same forename. In the light of this I've called this month's "Billy Boy"; all you have to do is match the Billys with their hits (They were all in the Top Ten). Answers as usual at the end.

1. Uptown Girl

2. D.I.V.O.R.C.E.
3. No-One but You
4. She's Leaving Home
5. Love Really Hurts Without You
6. Halfway to Paradise
7. I Can Help
8. White Wedding
9. Achy Breaky Heart
10. King of the Cops
- A. Billy Bragg
- B. Billy Ray Cyrus
- C. Billy Ocean
- D. Billy Connolly
- E. Billy Fury
- F. Billy Swan
- G. Billy Idol
- H. Billy Eckstine
- I. Billy Joel
- J. Billy Howard

And lastly we come to Trivial Knowledge (have we got time? Yes I think so just as long as you get on with it. No, you haven't got time to get another pint in; I've got a deadline to meet). Here are last month's answers. They won't mean a thing if you didn't read last month's questions:

1. Tahiti
2. Eight
3. Loch Lomond
4. None
5. Tessa Sanderson
6. Miss Marple
7. She was mortal
8. Pegasus, the winged horse and the warrior, Chrysaor. Both appeared fully grown.
9. The Fylde
10. Epsom Salts

And here is the justification for next month's last month's answers:

1. Buddy Holly had a total of six top ten hits in the UK but only one number one. Which was it?
2. Still thinking about Buddy Holly, what happened to Cindy Lou?
3. What "monument to secrecy" was designed by Terry Farrell?
4. As we all know the first postage stamp, the Penny Black, was introduced on 6th May 1840, but how long did it last before it was replaced by the Penny Red?
5. There are five classic races in the flat

season. Over how many race courses are they run?

6. Instituted in 1715 and held on the Thames, what is the oldest sporting event in Britain?
7. On Friday 14th June a mail coach left London for Norwich to commemorate the anniversary of the last scheduled mail coach to leave London. How many years was the anniversary remembering?
8. Who replaced Paul Jones as the lead singer with Manfred Mann when he went solo?
9. And talking of singing Joneses, what is the full name of Tom Jones?
10. What town is famous for its mile long straight stretch of the River Thames?

And finally, here is the solution to this month's 5BY4:

1-I, 2-D, 3-H, 4-A, 5-C, 6-E, 7-F, 8-G, 9-B, 10-J.

Phew, I'm knackered. See you next time, unless you see me coming first.

**Andy Pirson**

## DESERT ISLAND BEERS

Greetings from way out (South) West. I have great pleasure in enclosing my eight definitive "Desert Island Beers" and sincerely hope that they find their way on to the pages of the inestimable "London Drinker". Here's hoping.

- 1 Fuller's London Pride:** Unique hop and malt combination.
- 2 Timothy Taylor Landlord:** Killer hops with a fruity edge.
- 3 Younger's Number 3:** Smooth malt and Auld Reekie's finest!
- 4 Nethergate Old Growler:** Sublime porter in a glass of its own.
- 5 Hopback Mild:** Exquisite and unsurpassed.
- 6 Coach House Auld Sleekit:** A lovely winter toes-tingler.
- 7 Morland Old Speckled Hen:** Strength and smoothness is a wicked combination!
- 8 Greene King IPA:** Suffolk's other major beer!

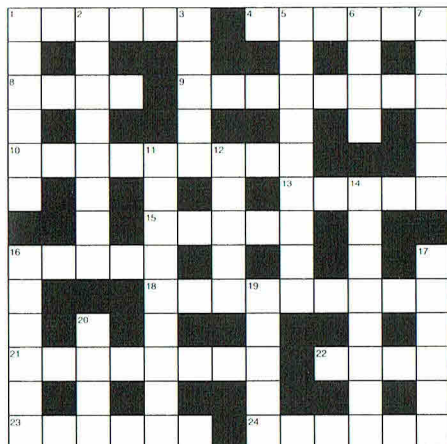
Well, there we have it. It was a very difficult to whittle them down and there were many other strong contenders, but I felt that this was as near definitive as I could get.

**Al Ferrier (Mr.)**



# LONDON DRINKER CROSSWORD

Compiled by DAVE QUINTON



Name.....

Address .....

.....

.....

All correct entries received by first post on 31st July will be entered into a draw for the prize.

Prize winner will be announced in the March London Drinker. Solution next month.

All entries to be submitted to:

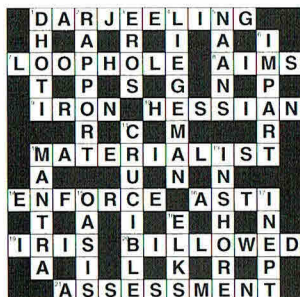
London Drinker Crossword

25 Valens House

Upper Tulse Hill

London SW2 2RX

## LAST MONTH'S SOLUTION



## £10 PRIZE TO BE WON

### ACROSS

1. Traveller coming from any part. [6]
4. Threaten death to trouble maker. [6]
8. Believe Tories have to stop. [4]
9. So grants are distributed for these. [3,5]
10. I have the navy in to stir up the water.[5,4]
13. Hill racer makes come back. What a mover! [5]
15. Tart has name for bad language. [5]
16. Pete's off to soak. [5]
18. Go into Italian island and get disease. [9]
21. Notice Vi upset at being thrown out. [8]
22. The price of food? [4]
23. The sickness of two women. [6]
24. Times journalist rubbed out. [6]

### DOWN

1. Right tennis player to return. [6]
2. Urge Roman four to enter second gallery. [8]
3. Long time to last in prison. [5]
5. He tells eating place to turn green. [9]
6. It takes ages to re-build nose. [4]
7. Broke, father took the woman in. [6]
11. Particular brief education is looked up to. [9]
12. To spill paint is not proper. [5]
14. Chants about parking restrictions. [8]
16. The way paper flower is made. [6]
17. Doesn't disturb the port. [6]
19. Bondsman? [5]
20. Patient first unwell. Take this. [4]

Winner of the prize for the May Crossword:  
J.E.Green, Horsham, West Sussex.

Other correct entries were received from:

Aaron Aachen, Tony Alpe, Pat Andrews, Mark Antony, Geoff B, John Blundell, Robin Bolt, Alan Brooke, Martyn Brown, Inspector Clouseau, A.P.Comaish, Kathryn Everett, Allan Gosling, Eileen Graves, Paul Gray, M.I.Green, Graham Hill, Colin Mann, Terry Neill, Rab Noolas, Mick Norman, Stuart Osgood, Nigel Parsons, Rod Prince, The Proofreader, Kevin Reeve, Super Scooper, Old Smokey (from Dorset), Stephen & Tarnya, Bill Thackray, Tony Watkins, Martin Weedon, Spud Whale, John Williamson.

# King & Barnes

## FINE SUSSEX ALES



*Available 1st June  
for 2 months*



*Available 24 August  
for 3 weeks*

*For more information on the Brewery,  
the Pubs, the Beers or Guided Tours  
please ring or write to:*

### **KING & BARNES LTD**

18 Bishopric, Horsham, West Sussex RH12 1QP  
Telephone: 01403 270470



---

## BRANCH DIARY

If your branch is not mentioned below, please ring the branch contact. Dates for July of which we have been notified are given below. Branches please send information to Andy Pirson. Branch contacts page 34.

**ALL LONDON:** Sat 13 Great British Beer Festival Publicity Day. Start at 11.15am at the STARGAZEY, Fulham Road, Chelsea; finish back there at 4.00pm with a free buffet and free pint courtesy of Fullers - Tue 16 Great British Beer Festival Publicity Evening. Join the party at either the WINDMILL, 6 Mill Street, W1 at 6.30pm or at 8.15 at the WORCESTER ARMS, 89 George Street, W1; finishing at the GEORGE & DRAGON, 151 Cleveland Street and a free pint. For further information on any of these events contact Anne Lodge on 0181-889 0513.

**CROYDON & SUTTON:** Thu 4 (8.30) Independents' Day Social. TWO BREWERS, 221 Gloucester Road, Croydon - Sat 6 Annual day trip to Brighton or Lewes Beer Festival. Ring Branch Contact for details - Tue 9 (8.00) Pub Gardens Social. NEW TOWN, 7 Lind Road, Sutton (depart 9.15) then NEW INN, 6 Myrtle Road, Sutton - Fri 12 Branch Visit to Batemans Brewery. Ring Branch Contact for details - Wed 17 (8.30) Garden Social. BUILDERS ARMS, 65 Leslie Park Road, Croydon - Thu 25 (8.30) Branch Meeting. WINDSOR CASTLE, 378 Carshalton Road, Carshalton.

**EAST LONDON & CITY:** Tue 2 (8.00) Branch Meeting. BIRKBECK TAVERN, Langthorne Road, Leyton, E11 - Sat 13 (10.00am) Roberts' Real Ale Ramble in Epping Forest. Meet at Loughton Underground Station - Wed 17 (6.30) Two Pub Social. COCKPIT, St Andrews Hill EC4 then BIER REX (8.00), Creed Lane - Tue 23 (8.00) Pig's Ear Planning Meeting. GOLDEN GROVE, The Grove, Stratford, E15 - Fri 26 (7.15) Pub Crawl of Stratford. Start EDWARD VII, The Broadway, E15 or LORD HENNIKER (9.00), The Grove, E15.

**KINGSTON & LEATHERHEAD:** Wed 10 (8.30) Business Meeting & New Member Welcome Night. BREWERY INN, The Street, Ashted - Sat 13 (8.00) Branch 21st Birthday Party. TWO BREWERS, Wood Street, Kingston. Includes commemorative beer and raffle. All members and ex-committee welcome - Thu 25 (7.30) Minibus trip to Cobham and Bookham, leaves Surbiton Station forecourt at 7.30pm sharp. Space is limited; please ring branch contact.

**RICHMOND & HOUNSLOW:** Mon 8 (8.00) Committee Meeting plus open Branch Meeting (9.00). WHITE HART, 1 High Street, Hampton Wick - Thu 18 (8.00) Outdoor Games Night. GREEN MAN, Hatton (5 mins from Hatton Cross Tube).

**SOUTH EAST LONDON:** Mon 1 (8.00) Committee Meeting. ASHBURNHAM ARMS, 25 Ashburnham Grove, SE10 - Tue 9 (8.00) Open Branch Meeting. RUTLAND ARMS, 55 Perry Hill, SE6. *New faces always welcome* - Wed 17 (8.00) Three Pub Social. WICKHAM ARMS, 69 Upper Brockley Road, SE4; MALT & HOPS (9.00), 237 Lewisham Way; DUKE OF EDINBURGH (10.00), 81 Malpas Road - Mon 22 (8.00) Catford Beer Festival Post Mortem. CRYSTAL PALACE TAVERN, 105 Tanners Hill, SE8. Come and tell us what we did right (and wrong)! - Tue 23 (8.00) New Members Social. COPPERFIELD, Catford Bridge, SE6. **ALL** members welcome - Thu 25 (8.00) GBBF Publicity Crawl. Meet at WHEATSHEAF, 6 Stoney Street, SE1 to start pub crawls of SE1. Free pint at end of evening - Mon 29 (8.00) August Committee Meeting. WHEATSHEAF, 6 Stoney Street, SE1.

**SOUTH WEST ESSEX:** Thu 4 (8.30) Independents' Day Social. PRINCE OF WALES, Woodham Road (was B1012), Stow Maries (**Runner up in National Pub of the Year Contest 1995/6**) - Thu 11 (8.30) Social at Beer Festival. WHITE HORSE, Coxtie Green Road, Coxtie Green - Wed 17 (8.30) Social at Second Chelmsford Brew-ha-ha. Sports Hall, Anglia Polytechnic University, Chelmsford - Sat 20 (11.30 at brewery) Brewery Trip to Bunces Brewery, Netheravon. Details/bookings from Wendy Benson on 01708-723897 - Tue 23 (8.30) Social. FOXHOUND, 18 High Street (B188), Orsett - Mon 29 (8.30) Out of Area Social. MOLETRAP, Tawney Common, Stapleford Tawney (OS: TQ500014).

**SOUTH WEST LONDON:** Sun 30 June Cricket V West Peckham. Abbey Rec, Morden Road, SW19 - Sun 7 Cricket V Watford Branch. Abbey Rec or Nursery Road, off Morden Road, SW19 - Sun 14 (10.30am) Open Committee Meeting followed by (11.00) Open Festival Committee Meet-

---

ing: Policy & Budget Meeting. Your chance for a say in next year's Battersea Beer Festival. **PRIORY ARMS**, 83 Lansdowne Way, SW8 - Sun 21 Cricket V Ightham (Away) - Tue 23 (7.30) Joint Social with West Middlesex Branch. Meet **ROSE & CROWN**, Church Place, St Mary's Road, W5 (near south Ealing tube) then **RED LION**; **PHOTOGRAPHER & FIRKIN**; **BETTER HALF**; finish **WHEATSHEAF**, Haven Lane (near Ealing Broadway tube & BR) - Sat 27 (11.00) Great British Beer Festival Publicity Crawl. Meet **HAND IN HAND**, Crooked Billet, Wimbledon Common, SW19. Includes **ROSE & CROWN** (1.15); **HAND & RACKET** (2.15); **WIBBAS DOWN INN** (4.00); **SULTAN** (6.00), all SW19 - Sun 4 Aug Cricket V SPBW Common Branch. Meet (1.00pm) **DUKE OF CAMBRIDGE**, 228 Battersea Bridge Road, SW11. Match in Battersea Park at 2.30 - Cricket players please ring Andy Robinson on 0171-410 6302 (work) or 0181-653 8885 (home).

**WATFORD & DISTRICT**: Thu 4 (8.30) Independents' Day Social. **WHITE HORSE** then **BLACK HORSE** (9.30); **OLD SHEPHERD**, all Chorleywood -Sun 7 (2.30) Cricket Match vs S.W. London Branch. Meet at 1.30 at **PRINCE OF WALES**, Morden Road SW19 - Wed 10 (8.00) Croxley Crawl. **RED HOUSE** then **FOX & HOUNDS** (9.00); **DUKE OF YORK** (10.00) - Sat 13 (5.30pm) Treasure Hunt. Meet at **LAST POST**, Chesham -Mon 15 (8.30) Far Out Social. **CROSS**, Maple Cross then **DUMB BELL** (9.30), Hornhill - Sat 20 (12.00) Lunchtime in Watford. **MOON UNDER WATER** then **ISOBAR** (1.00); **YATES'S** (2.00) - Sat 27 Minibus Trip to Oxon/Berks. Details from Branch Contact - Sun 28 (8.00) Committee Meeting. **WEST HERTS SPORTS CLUB** - Advance Notice: Weekend 25-27 Oct Batemans Trip. Names to Branch Contact please.

**WEST LONDON**: Tue 2 (8.30) Garden Social. **SALUTATION**, 154 King Street, W6 - Thu 18 (8.00) Branch Meeting/Social. **WHITE HORSE**, 1 Parsons Green, SW6 - Wed 31 Pub Crawl. **FULHAM TUP**, 268 Fulham Road, SW10; **STARGAZEY** (9.15), 236 Fulham Road; **FINCH'S** (10.00), 190 Fulham Road - See also under "All London" heading two GBBF Publicity Crawls in West London Area.

**WEST MIDDLESEX**: Tue 2 (8.30) Social. **MOON & SIXPENCE**, Uxbridge Road, Hatch End - Sat 6 (12.30) Harmondsworth "Thingy". Start **CROWN** then **FIVE BELLS** (2.30ish) - Tue 9 (8.30) Social. **J J MOONS**, Victoria Road, Ruislip Manor - Wed 17 (8.30) Branch Meeting. **DUKE OF YORK**, Steyne Street, Acton, W3 - Tue 23 (7.30) Joint Social with South West London Branch. Start **ROSE & CROWN**, Church Place, South Ealing, W5. Phone for more details (or see SW London entry) - Mon 29 (8.00) Curry Night. Meet at **ROSE & CROWN** (again), South Ealing - Wed 31 (9.00) Social & London Drinker Pickup. **RED LION**, 13 St Marys Road, Ealing, W5.

Deadline for the August edition, 1st July. Material for September to arrive by 1st August.

**Please be sure to send all diary material to Andy Pirson**

---

## **HIGH SUMMER BITTER WITH A 4.6 ABV**

McMullen recently announced High Summer Bitter, the tenth McMullen Special Reserve limited edition seasonal ale in the series.

First launched in the spring of 1993, the Special Reserve series set a standard now widely emulated in the brewing industry, and last year won for Production Director and Head Brewer Tony Skipper, the title, UK Brewer of the Year.

Like all the previous ales in the series, High Summer Bitter has been created by Tony Skipper to match his acclaimed Special Reserve standards and catch the mood of the season.

For High Summer Bitter, he set out to produce a beer that delivered the high quality

and strength that has become a feature of the Special Reserve range with the lightness and freshness required for a cooling summer brew.

First, he combined the finest malted barley with McMullen's natural well water and wholeleaf Golding aroma hops. Then, he added McMullen's own special ale yeast and let the brew ferment gently for seven days in the Hertford Brewery's famous copper-lined oak vats to an ABV of 4.6 per cent.

"I was delighted with the reception given to Fine Summer Bitter, the second of the Special Reserve series, in 1993," said Tony Skipper, "so I resolved this year to produce another bitter that drinkers would find smooth and refreshing in the hot days of summer."



---

## THE TAX THAT HURTS

Since 1979 duty and VAT on beer has risen by 53 per cent in real terms, and beer consumption has fallen by 28 per cent. Meanwhile wholesale beer prices are declining in real terms.

For every 36 gallon barrel, a brewer typically makes about £10 profit. The Chancellor takes £70 in duty alone.

### **The excessive taxation of beer:**

- discriminates against weaker community pubs;
- discriminates against the less well off who drink more beer than those with higher incomes;
- induces tax avoiding cross border shopping;
- is an incentive for smuggling and crime;
- severely distorts competition in favour of continental producers and retailers;
- exports jobs, profits and investment to the Continent;
- damages an industry which generates 900,000 jobs.

Since 1979 there have been 13 excise duty increases forcing up the price of beer and making the pub a less attractive choice.

---

---

## OBITUARY

### **KERRY BUTLER – PRIDE OF SPITALFIELDS EI TWO TRIBUTES**

The East London & City Branch are saddened to learn of the death of Kerry Butler of the Pride of Spitalfields in Whitechapel. I first met Kerry in the early days of the Pub, Club & Leisure Show where CAMRA had a presence. What did I know about the Romford Arms in Heneage Street he asked me. Other than it was a small Ind Coope pub that used to sell real ale (that is how it appeared in our 1983 guide), not a lot I replied. A few years later every beer lover knew about the pub when it appeared in the 1988 Good Beer Guide with its new name. Kerry had been struggling with cancer for some years yet whenever I visited the pub he always acknowledged all of his customers. Our sympathies are extended to his family. He will be missed by his friends and customers.

**Keith Emmerson**

---

# IN 200 YEARS WE'VE NEVER SOLD OUT.

Since 1799 the name Greene King has been synonymous with fine ales. Over all those years, we've fiercely defended our independence and our brewing traditions. It means we've been able to consistently produce some of the finest ales in the country. We haven't sold out. But our beers often do.



## EIGHT FAVOURITE BEERS

**HOP BACK GFB:** Not the bitterest of beers but still with a fine hoppy flavour. Very well balanced, a perfect session beer.

**HOP BACK ENTIRE STOUT:** First tried this in Salisbury at the brewery's five year anniversary celebrations. Excellent dry and flavoursome. Makes you wonder how Guinness has been getting away with it all these years.

**ADNAMS EXTRA:** Worth seeking out! Excellent bitter beer, fine flavour of hops.

**WOODFORDE'S WHERRY:** Simply superb flagnetic balance of hops and malt, wonderful aroma too.

**BATEMANS MILD:** Who said Mild was bland? First had this in Norwich overlooking the River Weasum and did not want to leave. Bags of flavour and with a "creamy" taste which owes more to the brewers art than a marketing man's gimmick.

**FREEMINER BITTER:** First had this at Battersea '96 and subsequently at the brewery. Very well balanced with fine hop flavour.

**MACLAY 70:** A well deserved inclusion from north of the border, still with a prominently malty taste but with a good balance of hops. I always drink this in the Balbity Bewsters in Glasgow, a positive oasis in a sea of McEwans Export.

**OTTER BITTER:** An excellent session bitter, a fruity taste which is prevented from being too drying by a good balance of hops. Truly refreshing, like Maclay uses its own water and I think it shows. An excellent beer from the Devon micro.

**James Honey**

## CAMRA RESPONDS TO 'SPRING INNS' SALES

CAMRA has called for Spring Inns to allow leasees to buy their own pubs.

Spring Inns has just been set up to buy 1400 pubs from Intntrepreneur. The pubs remain tied to Intntrepreneur's supplier, Scottish Courage, and the intention is for the pubs to be sold on to one or more third parties.

CAMRA described this as "Yet another cynical shuffling of the pack - though with Intntrepreneur's record, many tenants may feel any other owner might be an improvement."

"This is the second or third change of ownership for some of these pubs," said CAMRA Campaigns Manager Stephen Cox. "There is constant uncertainty. It is time to break this constant turmoil, by letting tenants buy their own pubs, and decide their own future."

Tenants of Spring Inns retain their guest beer rights but may lose them if sold to a third party.

## APPLICATION TO JOIN CAMRA

I/We wish to become members of the Campaign for Real Ale Limited and agree to abide by the Memorandum and Articles of Association of the Campaign.

Name(s) .....

Address .....

.....Postcode .....

Signature.....Date .....

I/We enclose the remittance for individual/joint membership:

	Individual Annual	Joint Annual	Individual Life	Joint Life
UK and EEC	£12 <input type="checkbox"/>	£14 <input type="checkbox"/>	£120 <input type="checkbox"/>	£140 <input type="checkbox"/>
Rest of the World	£16 <input type="checkbox"/>	£18 <input type="checkbox"/>	£160 <input type="checkbox"/>	£180 <input type="checkbox"/>
Student/Unwaged	£6 <input type="checkbox"/>	£7 <input type="checkbox"/>		
Disabled	£6 <input type="checkbox"/>	£7 <input type="checkbox"/>	£60 <input type="checkbox"/>	£70 <input type="checkbox"/>
Retired	£6 <input type="checkbox"/>	£7 <input type="checkbox"/>	£60 <input type="checkbox"/>	£70 <input type="checkbox"/>

Send your remittance (payable to CAMRA Ltd) to:

Membership Secretary, CAMRA Ltd, 230 Hatfield Road, St Albans, Herts AL1 4LW



## LETTERS TO THE EDITORS

Dear Editors,

Fuller's current pub closure policy is not new in our own, West Middlesex, area; the Pear Tree in Hillingdon was demolished not too long ago to make way for flats and the Rossetti in St. Johns Wood met a similar fate. Coupled with the recent furore over their plans for the Rose & Crown in Ealing, I consider that Fullers are in serious danger of losing their way, and with it their bedrock CAMRA support. All of the closures affected pubs with significant redevelopment potential and the intended brasserie conversion of a locals' pub (now thankfully dropped) just defied belief.

I, for one, will sorely miss the Queen Victoria and the Rossetti (surely one of the most unique pubs in its time) and hope that the recent setback at the Rose & Crown will be the end of it. I suspect the opposite to be true!

Perhaps Fullers could be persuaded to find a suitable, new, site on which to recreate the Rossetti.

Yours sincerely,

Paul Dabrowski, Norwood Green

Dear Editors,

We have recently received a letter from Shepherd Neame threatening imminent court proceedings for what they claim is a breach of trademark relating to their product "Bishops Finger" and the name of our brewery "Bishops Brewery".

The main part of the letter, which we have been advised not to reproduce, claims that an interlocutory injunction would be sought until the matter was concluded by the court, coupled with a suggested cost of £10,000 for both parties.

Also a guarantee was needed that the name "Bishops" would be reduced in size and ultimately phased out over a period of time. This was of course unreasonable. After all the brewery was founded back in 1993 by Andrew Bishop, who surely has rights to his own surname, his parents unaware of the perils they placed their son in when forming their relationship!

Besides, does this attitude extend to others who use the name "Bishops", not as part of their trading name but refer to it directly in their own products..... "Bishops Tipple", "Bishops Farewell" and the too close for comfort "Bishops Toe" which I understand

was a one-off brew but is much closer to a trademark infringement than our own company's name.

I rang Gibbs Mew to see if they too had received such warnings on the use of the name - surprisingly they had not. Perhaps there is one rule for one brewery and one for another (depending on how small they are!)

We received another letter from Shepherd Neame, after supplying them with promotional products from our brewery to clear up the matter and were told that they were relieved to find no confusion with their product after digesting the information thoroughly, but still seeking an assurance that the name would not be abbreviated to "Bishops". This is something we are unwilling to give in the light that there was no trademark infringement.

Our products are being judged on their own merits and that is exactly how we seek success and its rewards, not by cashing in on any other product or name.

We feel it unreasonable when, without researching the matter thoroughly, letters are issued; muscles are flexed and large sums of

*Continued on page 16*

## BEER FESTIVAL?

**FULL RANGE OF EQUIPMENT  
FOR SHORT TERM HIRE,  
INCLUDING:**

- CASK ALE COOLING ● DRIP TRAYS
- RACKING ● TAPS ● BLACKBOARDS
- SELF ASSEMBLY OPTION
- ANY SIZE EVENT



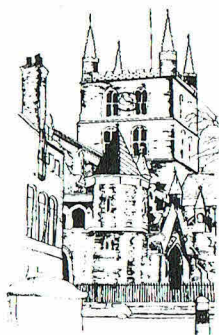
CALL FREE ON

**0500  
416948**

**FILTON**

**BREWERY PRODUCTS LTD**

Little Chawbrook, Chawbrook Road,  
Eastbourne, East Sussex BN22 8HB  
Tel 01323 416948 Fax 01323 431259



# BISHOPS BREWERY

WHAT ARE THE REASONS MORE AND MORE FREEHOUSES ARE CHOOSING BISHOPS BEERS ?

- ✓ QUALITY      ✓ COMPETITIVE PRICES
- ✓ TASTE        ✓ SEVEN DAYS A WEEK DELIVERY SERVICE

## **CATHEDRAL BITTER (ABV 3.7%)**

*"A distinctive and delightful, hoppy beer"*

## **MITRE BEST BITTER (ABV 4.2%)**

*"Delicious malty character with soft bitter taste"*

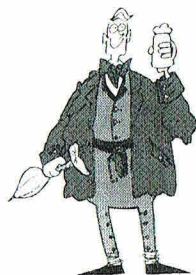
## **CARDINAL ALE (ABV 4.7%)**

*"A traditional ruby coloured ale with full bodied taste"*

## **THIRSTY WILLIE'S BITTER (ABV 3.7%)**

*"A light coloured, superbly drinkable session ale"*

**STOP PRESS: Thirsty Willie's coming soon to selected Wetherspoon's outlets from July, through East West Ales.**



ALSO AVAILABLE AT THESE OTHER QUALITY OUTLETS:

**GEORGE INN**, 77 Borough High Street, SE1

**LORD CLYDE**, 27 Clennam Street, SE1

**PRIORY ARMS**, 83 Lansdowne Way, SW8

**ROBIN HOOD & LITTLE JOHN**, Lion Road, Bexleyheath

**TRINITY ARMS**, 7 Trinity Street, SE1

**WHEATSHEAF**, 6 Stoney Street, SE1

## **People drink it religiously**

Telephone or Fax us on 0171 357 8343



## FROM OUR ARCHIVES

FIFTEEN YEARS AGO the pink covered 20 page July '81 edition featured the Barley Mow, Royal Hill, Greenwich on the front cover. Inside it was announced that the Phoenix Brewery at Watlingbury, Kent was to be closed by Whitbread, that Taylor Walker was continuing to have problems with beer quality, and Keith Showering, Chief Executive and Chairman of Allied Brewery had a low opinion of CAMRA and had accused the Campaign of being a Marxist plot.

Other pub and brewery news included the acquisition by Shepherd Neame of the Railway Tavern, N16, and the Lytton Arms N1 from Charringtons, the reopening of the Cunningham, New Addington after refurbishment and a new home brew pub had opened in the Duke of Bridgewater N1.

Laurie Bishop described various facets of the drinking scene in the capital in an article entitled Capital Beer, whilst Howard Gladwin had penned an article covering drinking in Zambia. On the financial side, CAMRA membership was £5 and beer was approx 47 pence per pint. Oh for the good old days!

TEN YEARS AGO the July 86 edition pictured the Ship and Shovel, WC2 on the front cover of the 32 page edition. Martin Smith's editorial comment on short measures and one of the letters dealt with overcharging for non-alcoholic drinks (nothing changes does it? - Ed). There were illustrated crawls of Ripon and Chislehurst, and P Roberts of Upminster described various tours of the pubs of a variety of brewers on non passport basis.

An article by "The Key Man" (I will continue to respect his anonymity) covered a variety of subjects including prices, pub rents, renovations and the inexperience of so many of new entrants into the licensed trade; whilst Dipsy was dispensing his own brand of advice to readers.

FIVE YEARS AGO a chocolate-brown July 91 edition featured the Dog and Bull in Croydon, a Youngs house. The editorial was a joint effort by editor Chris Cobbold and "Raincoat" and covered various aspects of pubs as diverse as exclusion from the Good Beer Guide, pub opening times and absence



### *The Best News of the Summer*

available from late June 1996

A new range of traditional and speciality beers  
Suffolk's newest and most progressive Brewery  
proudly presents

**Best Bitter  
Strong Bitter  
Wheat Beer  
Fruit Beer**

with more quality beers  
coming through the summer

Available at fine Freehouses across the capital

*For further information, or if you would like to  
visit our Brewery at the 14th-century St. Peter's Hall  
contact:*

Richard Eytton-Jones or Alistair Burnett, St. Peter's Brewery Co. Ltd.  
St. Peter's Hall, St. Peter South Elmham, Bungay, Suffolk NR35 1NQ  
Tel: 01986 782322 Fax: 01986 782505

of pump chips to indicate available beers. In the letters column was a letter from a publican, whose name and address was not published for obvious reasons, confirming the comments made in the May editorial regarding unacceptable practices such as recycling drip tray overflows and other excess beer back into the cask.

There were articles advertising the forthcoming Great British Beer Festival at Docklands and the newly issued 8th Essex Beer Guide as well as comments from CAMAL and a 15 mile pub crawl through Brakspear country by Denys Vernall starting at Shiplake and ending in Henley itself.

Well, that ends this month's nostalgia trip. It is surprising how quickly the month passes; no sooner do I seem to have meandered through my back numbers to research this article and exercise my archivist's pen than it is time to journey back again for the next month. So until then, Farewell.

**Ian Amy**

---

Continued from page 13

money wrapped in court proceedings are mentioned.

We shall not change our name because of one product that has no bearing on our own, nor ours on theirs.

Yours sincerely,

Tom Pheby, Bishops Brewery, London SE1.

---

Dear Editors,

Further to the comments made by Tom Vickers in the May edition and to my earlier points regarding Wetherspoon's; yes, I concur with the points of Mr. Vickers' letter. Believe it or not, I am actually a fan of what Tim Martin is doing and I too value Tim's ideas as being useful to the real ale cause. I make a point of drinking the weekly guest ales that are on sale and also enjoy the beer fests that the chain puts on.

In my previous letter I was merely making a few pertinent points on how Wetherspoon's do what they do and this was not meant as any slight on what Mr. Martin is attempting to do. If there is one small criticism I have, it is this; a Wetherspoon's customer can always count on clean loos, good cheap(ish) ale and smart decor and that, but ultimately visiting Wetherspoon outlets is pointless as they all look identical! I've been to a few around my area and I enjoy my visits, but apart from the monochrome pictures on the walls (an attempt at "local character"?), there is little to set each place apart from the others in the chain. I can buy a Big Mac in the McDonald's in Manchester and an identical one in Moscow like I can buy a pint of Theakston's XB in Wimbledon and another in Woking and where I buy the XB, like the Big Mac, will look just the same.

We in CAMRA are, quite rightly, keen to support pubs with their own character each serving their own clientele, but Wetherspoon's are in danger of being seen as the McDonalds of the ale world; safe, bland and with little character of their own. If only Tim Martin could try to make the places seem a little bit more individual and not the sometimes vast, impersonal (but always clean) barns that seem to be his *raison d'être* now.

Wimbledon's Wibbas Down Inn, the company's second largest, is a nice place but it's like drinking in an aircraft hanger and the one in Manchester covers three floors of an old department store! I have been to smaller

Wetherspoon outlets, but none of them have much character either. Maybe the shopfitters just duplicate the plans of the last place they did.

I think we have to be vigilant that the traditional British boozer is not being used by large powerful businesses as just one of many cost effective, efficient marketing "concepts". Even a place that is just an ordinary pub with no pretensions is now seen as "a themed house", its theme being that it is "traditional"! It seems that you can't just run a pub - you have to be a concept! We should be wary of the marketing of a superficial nostalgia as "tradition", as it seems it is dead easy for someone to bung up a few old horse brasses, a couple of period adverts (you know the sort) and imply that it is genuinely old! That's a shame. Do we really want bland, characterless barns as the new majority reality of pub drinking? I think not and I support true diversity - good luck to Tim Martin and Co, but power to the independent solo free house and any other genuine place as well.

With some qualification, I too am over the (JJ) Moon that Tim is as successful as he is, but let's keep it in perspective.

Yours sincerely,

Al Ferrier, New Malden.

PS. I was sorry to see the Horse & Groom (Waldegrave Road, Teddington) boarded up. There was nothing in the local Informer despite it being just across the road from their office! It may have been dowdy and a bit run down, but it must have had its regulars like everywhere else. Diversity and choice takes another knock. By the way, the Earl Beatty, Motspur Park recently closed for a major re-fit and was due to open on 10th June - as a S&N "Steak & Ale" themed house! I can hardly wait...

*Editor's Comment:*

*I seem to remember doing an editorial along these lines over a year ago. Obviously I agree with your sentiments that Wetherspoon's are not the sort of pubs that you would want to do a passport scheme on. However, this is NOT in my opinion their purpose in life; the idea is that you will find one wherever you are, not that you should have to go on a pilgrimage to find one.*

*With regard to the corporate image, I think you place too much emphasis on the "shopfitter's last job". The idea is that they should look the same even if every one is*





Since the last Wetherspoon News, the company has opened 13 new pubs throughout the country.

An array of former buildings, including supermarkets, cinemas and shops have reopened as Wetherspoon outlets.

At present (April 1996) building teams are on site at 10 new pubs and a further eight will be on site in the coming weeks and months.

Of the 13 new pubs, three have opened in April, just before the magazine went to press.

They are Wetherspools in Portsmouth, The Rhinoceros in Rotherham and The Troll Cart in Great Yarmouth (Full addresses are listed in the 'Now Open' section on the next page).

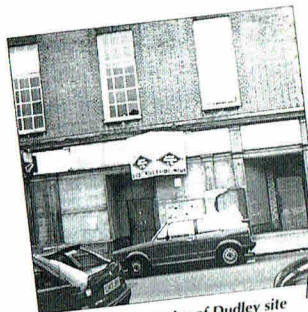
Below is a list of forthcoming openings – The opening dates, in brackets, are only a guide and are subject to change.

#### ON SITE – APRIL 1996

- The Cross Keys – 2 Chequer Street, St Albans, Hertfordshire (April 25)
- The Last Plantagenet – 107 Granby Street, Leicester (April 25)
- The College Arms – 40 The Broadway, Peterborough (May 16)
- The Bankers Draft – 1-3 Market Place, Sheffield (June 16)
- The Figure of Eight – Broad Street, Birmingham (June 20)
- The Ash Tree – Main Street, Wellington Road, Ashton-Under-Lyme. (June 27)
- The Benjamin Satchwell – 112-114 The Parade, Leamington Spa (July 11)
- The Grey Friar – 144, Friargate, Preston (July 18)
- The Standing Order – 20 High Street, Southampton (July 25)
- Unnamed – The Parade – Market Place, Northampton (July 25)

#### ON SITE – (MAY 1996 ONWARDS)

- Unnamed – 15 Meadow Street, Weston-Super-Mare (August 14)
- Unnamed – 58-60 High Street, Dudley (August 15)
- Unnamed – 17 London Road, Redhill (August 15)
- Unnamed – The Wiend, Market Place, Wigan (September 12)
- Unnamed – 85-87 Westborough, Scarborough (September 20)
- The Picture House – Bridge Street, Stafford (October 16)
- Unnamed – 2-8 High Street Staines (October 17)
- Unnamed (The former Marquee Club) – 105 Charing Cross Road, London WC2 (November 17)



Existing exterior of Dudley site



Existing exterior of Wigan site

**BARKING AND DAGENHAM**

**THE BARKING DOG**  
61 Station Parade, Barking

**THE LORD DENMAN**  
270-272 Heathway, Dagenham

**BARNET**

**THE MOON UNDER WATER**  
148 High Street, Barnet

**THE WHITE LION OF MORTIMER**  
3 York Parade, West Hendon  
Broadway NW9

**THE RAILWAY BELL**  
13 East Barnet Road, New Barnet

**THE MOON UNDER WATER**  
10 Varley Parade, Colindale NW9

**\*THE TALLY HO**  
749 High Road, North Finchley N12

**THE BLACKING BOTTLE**  
122-126 High Street, Edgware

**BEXLEY**

**THE WRONG 'UN**  
234-236 The Broadway, Bexleyheath

**BRENT**

**J J MOON'S**  
553 Kingsbury Road, Kingsbury NW9

**THE OUTSIDE INN**  
312-314 Neasden Lane, Neasden  
NW10

**J J MOON'S**  
397 High Road, Wembley

**THE COLISEUM**  
Manor Park Road, Harlesden NW10

**BROMLEY**

**THE MOON AND STARS**  
164-166 High Street, Penge SE20

**THE HARVEST MOON**  
141-143 High Street, Orpington

**THE SOVEREIGN OF THE SEAS**  
109-111 Queensway, Petts Wood

**CAMDEN**

**THE MAN IN THE MOON**  
40-42 Chalk Farm Road, Camden  
NW1

**THE BEATEN DOCKET**  
50-56 Cricklewood Broadway,  
Cricklewood NW2

**THE THREE HORSESHOES**  
28 Heath Street, Hampstead NW3

**CITY OF LONDON**

**HAMILTON HALL**  
Liverpool Street Station EC2

**CROYDON**

**THE GEORGE**  
17-21 George Street, Croydon

**THE MOON UNDER WATER**  
1327 London Road, Norbury SW16

**THE FOXLEY HATCH**  
8-9 Russell Hill Parade,  
Russell Hill Road, Purley

**EALING**

**THE RED LION AND PINEAPPLE**  
281 High Street, Acton W3

**ENFIELD**

**THE MOON UNDER WATER**  
115-117 Chase Side, Enfield

**THE WHOLE HOG**  
430-434 Green Lanes, Palmers Green  
N11

**THE HALF MOON**  
749 Green Lanes, Winchmore Hill  
N21

**THE BANKER'S DRAFT**  
36-38 Friern Barnet Road,  
New Southgate N11

**THE LAMB**  
52-54 Church Street, Edmonton N9

**EPHING FOREST**

**THE LAST POST**  
227 High Road, Epping

**GREENWICH**

**THE BANKER'S DRAFT**  
80 High Street, Eltham SE9

**HACKNEY**

**THE ROCHESTER CASTLE**  
145 High Street, Stoke Newington  
N16

**HAMMERSMITH**

**THE MOON ON THE GREEN**  
172-174 Uxbridge Road,  
Shepherds Bush W12

**HARINGEY**

**THE OLD SUFFOLK PUNCH**  
10-12 Grand Parade, Green Lanes,  
Harringay N4

**THE NEW MOON**  
413 Lordship Lane, Tottenham N17

**THE ELBOW ROOM**

503-505 High Road, Tottenham N17

**THE TOLL GATE**

26-30 Turnpike Lane, Hornsey N8

**THE ELBOW ROOM**

22 Topsfield Parade, Tottenham Lane,  
Crouch End N8

**THE GATE HOUSE**

1 North Hill, Highgate N6

**HARROW**

**J J MOON'S**  
3 Shaftesbury Parade,  
Shaftesbury Circle, South Harrow

**THE MOON ON THE HILL**  
373-375 Station Road, Harrow

**NOW**

- The College Arms, 40 T
- The Coronet, 338-346
- The Hatters Inn, 2-10
- The Imperial, Ne
- The New Crown, 80-
- The Postal Order, 15
- The Potter's Wheel, 8
- The Regal, King
- The Rhinoceros, 35-3
- The Savoy, 38-40
- The Troll Cart, 7-9 Re
- Wetherspoons, 2 Gu
- The Wolf, 88-89 St Jo

**THE NEW MOON**

25-26 Kenton Park Parade,  
Kenton Road, Harrow

**THE MOON AND SIXPENCE**

250 Uxbridge Road, Pinner

**THE SARSEN STONE**

32 High Street, Wealdstone

**J J MOON'S**

20 The Broadwalk, Pinner Road,  
North Harrow

**THE VILLAGE INN**

402-408 Rayners Lane, Pinner

**THE MAN IN THE MOON**

1 Buckingham Parade, Stanmore

**HAVERING****J J MOON'S**

46-62 High Street, Hornchurch



# WETHERSPOON PUB GUIDE

*your*

## THE MOON AND STARS

99-103 South Street, Romford

## HERTFORDSHIRE

### THE HART AND SPOOL

148 Shenley Road, Borehamwood

### THE MOON UNDER WATER

44, High Street, Watford

## HILLINGDON

### J J MOON'S

12 Victoria Road, Ruislip Manor

### THE MOON UNDER WATER

10-11 Broadway Parade,  
Coldharbour Lane, Hayes

## THE MOON ON THE SQUARE

Unit 30, The Centre, Feltham

## ISLINGTON

### THE DOG

17-19 Archway Road, Archway N19

### 179 UPPER STREET

179 Upper Street, Islington N1

### THE WHITE LION OF MORTIMER

125-127 Stroud Green Road,  
Stroud Green N4

### THE MASQUE HAUNT

168-172 Old Street EC2

## KENT

### THE PAPER MOON

55 High Street, Dartford

## LAMBETH

### THE CROWN AND SCEPTRE

2a Streatham Hill SW2

### THE BEEHIVE

407-409 Brixton Road, Brixton SW9

## LEWISHAM

### THE TIGER'S HEAD

350 Bromley Road, Catford SE6

### THE BIRD IN HAND

35 Dartmouth Road, Forest Hill SE23

## MERTON

### THE WHITE LION OF MORTIMER

223 London Road, Mitcham

## WETHERSPOONS

33 Aberconway Road, Morden

### THE WIBBAS DOWN INN

6-12 Gladstone Road, Wimbledon

## NEWHAM

### THE MILLER'S WELL

419-421 Barking Road, East Ham E6

### THE GOLDENGROVE

146-148 The Grove, Stratford E15

## REDBRIDGE

### THE NEW FAIRLOP OAK

Fencepiece Road, Barkingside

### THE GEORGE

High Street, Wanstead E11

### THE GREAT SPOON OF ILFORD

114-116 Cranbrook Road, Ilford

CONTINUED OVERLEAF

## OPEN

The Broadway, Peterborough  
Holloway Road, London N7  
Queensway, Bognor Regis  
ew North Road, Exeter  
-8-1 Châse Side, Southgate  
Darwen Street, Blackburn  
39 The Kingsway, Swansea  
s Square, Gloucester  
37 Bridgegate, Rotherham  
egent Street, Swindon  
gent Road, Great Yarmouth  
ildhall Walk, Portsmouth  
n Street, Bury St Edmunds

### J J MOON'S

Terminal Four, (Airside),  
Heathrow Airport, Hounslow

### WETHERSPOONS

Terminal Four, (Landside),  
Heathrow Airport, Hounslow

### THE MOON AND SIXPENCE

1250-1256 Uxbridge Road,  
Hayes End

### THE SYLVAN MOON

27 Green Lane, Northwood

### THE GOOD YARN

132 High Street, Uxbridge

## HOUNSLOW

### THE MOON UNDER WATER

84-86 Staines Road, Hounslow

### J J MOON'S

80-82 Chiswick High Road, Chiswick W4

**RICHMOND UPON THAMES**

**THE MOON UNDER WATER**  
53-57 London Road, Twickenham

**SOUTHWARK**

**\*THE FOX ON THE HILL**  
149 Denmark Hill SE5

**SURREY**

**THE REGENT**  
19 Church Street, Walton-on Thames

**SUTTON**

**THE WHISPERING MOON**  
25 Ross Parade, Woodcote Road,  
Wallington

**THE MOON ON THE HILL**  
5-9 Hill Road, Sutton

**BERKSHIRE**

**\*THE OLD MANOR**  
Church Road, Bracknell

**THE MONKS' RETREAT**  
163 Friar Street, Reading

**THE MOON UNDER WATER**  
86-88 High Street, Slough

**BIRMINGHAM**

**THE SQUARE PEG**  
Units 1, 2 & 3 Temple Court, 115  
Corporation Street

**BRISTOL**

**THE COMMERCIAL ROOMS**  
43-45 Corn Street

**THE BERKELEY**

15-19 Queens Road, Clifton

**BUCKINGHAMSHIRE**

**THE LAST POST**  
77 The Broadway, Chesham

**THE FALCON**

9 Cornmarket, High Wycombe

**WETHERSPOONS**

201 Midsummer Boulevard, Bouverie  
Square, Milton Keynes

**CHESHIRE**

**WETHERSPOONS**  
78-92 Foregate Street, Chester

**DERBYSHIRE**

**THE STANDING ORDER**  
28-32 Irongate, Derby

**WETHERSPOONS**

553-556 London Road, North Cheam

**TOWER HAMLETS**

**THE CAMDEN'S HEAD**  
456 Bethnal Green Road, Bethnal  
Green E2

**WALTHAM FOREST**

**THE DRUM**  
557-559 Lea Bridge Road, Leyton E110

**WANDSWORTH**

**JJ MOON'S**  
56a High Street, Iooting SW17  
**THE MOON UNDER WATER**  
194 Balham High Road, Balham SW12

**THE SPOTTED DOG**  
72 Garratt Lane, Arndale Centre,  
Wandsworth SW18

**OUTSIDE M25****DORSET**

**THE MOON IN THE SQUARE**  
4-8 Exeter Road, The Square,  
Bournemouth

**EAST SUSSEX**

**CLIFTONVILLE INN**  
98-101 George Street, Hove

**ESSEX**

**THE ELMS**  
1060 London Road, Leigh-on-Sea

**THE LAST POST**

Weston Road, Southend-on-Sea

**THE PLAYHOUSE**

4 St. John Street, Colchester

**THE MOON ON THE SQUARE**

1-15 Market Square, Basildon

**GWENT**

**WETHERSPOONS**  
Unit 10-12 The Cambrian Centre,  
Newport

**HEREFORD AND WORCESTER**

**THE GOLDEN CROSS HOTEL**  
20 High Street, Bromsgrove

**KENT**

**THE MUGGLETON INN**  
8-9 High Street, Maidstone

**LINCOLNSHIRE**

**THE TOLLEMACHE INN**  
St. Peters Hill  
28 Catherine's Road, Grantham

**LIVERPOOL**

**WETHERSPOONS**  
Units 1, 2 & 3 Charlotte Row,  
Great Charlotte Street, Liverpool

**THE RAILWAY**

202 Upper Richmond Road, Putney SW15

**THE GRID INN**

22 Replingham Road,  
Southfields SW18

**WESTMINSTER**

**THE MOON UNDER WATER**  
28 Leicester Square WC2

**WETHERSPOONS**

Victoria Station SW1

**THE MOON AND SIXPENCE**

185 Wardour Street W1

**THE LORD MOON OF THE MALL**

16-18 Whitehall SW1

**MANCHESTER**

**THE MOON UNDER WATER**  
68-74 Deansgate

**WETHERSPOONS**

49 Piccadilly

**NORFOLK**

**THE BELL HOTEL**  
5 Orford Hill, Norwich

**OXFORDSHIRE**

**THE EXCHANGE**  
49-50 High Street, Banbury

**SOUTHPORT**

**WETHERSPOONS**  
20 Lord Street, Southport

**SURREY**

**WETHERSPOONS**  
51-57 Chertsey Road, Woking

**SUSSEX**

**THE RED LION**  
North Terminal, International  
Departures Lounge, Gatwick Airport

**THE JUBILEE OAK**

6 Grand Parade, High Street, Crawley

**WOLVERHAMPTON**

**THE MOON UNDER WATER**  
53-55 Lichfield Street, Wolverhampton

For more information on any Wetherspoon pub or activity write to:

J D Wetherspoon plc, Wetherspoon House, Central Park, Reeds Crescent, Watford, Herts WD1 1QH, or Telephone (01923) 477774

\*Children are allowed in these pubs at all times (denoted by asterisk) when accompanied by an adult and only when food is ordered.



---

## BREWING A TASTE OF HISTORY

Since the early Egyptians began brewing, there have been many different ales, and along with them, the enthusiasm for beer has grown.

So, when Marston's Head Brewer prepares to produce new brews he certainly has a few years to look back on for inspiration. Paul Bayley, Marston's Head Brewer has been brewing beer with the company for 30 years, and it is his skills that develop the popular ales that have become available through the Head Brewer's Choice ranges of beers.

Monks Habit, Oyster Stout, Single Malt, Regimental Ale, Wood Street Bitter and Burton Strong Pale Ale are to name but a few of the diverse range of ales that have achieved almost cult following with beer drinkers nationally.

So how does the company begin to develop a new beer? Paul and his team usually begin with a beer style in mind, perhaps something that as a company they haven't done before, or maybe a style totally new to the market place. They look whether it will be a dark or light brew, strong or weak, and then how the ale will fit into the range that has already been agreed. When it comes to naming the brew they try to link the name to the beer styles history, ingredients or method of brewing.

The Head Brewer's Choice range consists of a diversity of styles and the ales are, as Paul puts it "different, but recognisably Marston's like." The team have always tried not to make the beers too quirky, aiming to brew an ale that the discerning beer drinker will appreciate.

Paul is confident enough to say that due to his team's experience and knowledge, they tend to get things right first time most of the time, however occasionally tastes have been known to change from what was expected during development, so waiting for the end result of each brew is always exciting.

This year's tasting and testing by the team has resulted in 17 special beers being available from May up until the New Year. Kicking off with Ditchingham, drinkers can look forward to tasting amongst others, Little

Lambswick, Nut Brown, Burton Union Bottom Taps and a Summer Wheat Beer.

Whether you are a serious beer connoisseur or whether you try them for fun, be sure not to miss out on any of the brews as you could be missing out on a piece of brewing history.

---

## CAMRA WELCOMES RATES RELIEF FOR VILLAGE PUBS

CAMRA, recently welcomed Government proposals which could cut business rates on village pubs by up to 100 per cent.

"Pubs are an important part of our communities. Pubs provide meeting places and support a network of social activity, such as charitable fund raising. They are much more than just beer shops," said CAMRA Campaigns Manager Stephen Cox. "With a thousand pubs closing last year, this support is timely."

"We are disappointed that the scheme will be discretionary – not all local authorities will have to implement it. We want the relief to apply to all authorities and to be introduced in Scotland."

"We are also concerned that the contribution of the ordinary town pub is not recognised. There are plenty of first class community pubs that are not in rural areas, equally worthy of support."

"CAMRA will continue to press for the most important tax cut of all – a 50 per cent reduction in British beer duty. That would revive the pub trade, eliminate the vast cross border trade in beer, and safeguard British jobs."

- 1 The Department of the Environment propose rate relief for village shops in communities with less than 3,000 people. They are consulting to extend this, on a discretionary basis, to other businesses below a certain rateable value such as pubs.
- 2 The licensed trade paid £2.4 billion in beer duty and £11 billion in all taxes in 1995. CAMRA argues that the industry is massively over-taxed.

---

*Views expressed in this publication are those of their individual authors and are not necessarily endorsed by the Editorial team or the Campaign for Real Ale Limited*

---

## CAMRA WELCOMES PUB HOURS

CAMRA, recently welcomed Government proposals for more flexible pub licensing. The Home Office proposes an extra hour of trading on Friday and Saturday evenings.

"This is a very modest reform, which will bring licensing hours closer in touch with reality," said CAMRA Campaigns Manager Stephen Cox. "Pub hours need to be based on how people live and work now, not fifty years ago."

"Previous deregulation has not increased the amount people drink or the degree of disorder. In fact this should be part of a strategy to encourage sensible and adult approaches to drinking."

The Home Office proposes an additional hour on Friday and Saturday evenings – and offers three different means of achieving this.

CAMRA agrees that the concerns of residents re-noise and nuisance must be met. The proposals are not a free-for-all.

"We favour the option which allows 11.00pm closing to be enforced where there is genuine cause for complaint. This will be a powerful weapon in the hands of residents

and magistrates."

"Other options include a large degree of local autonomy. It is inevitable that under such a system we will see blanket bans in one district and a liberal policy in the next – we'll see people commuting across district boundaries in search of late night pubs!"

**LONDON DRINKER** is published by the London Branches of CAMRA, the Campaign for Real Ale Limited.

Editors: Chris Cobbold, 25 Valens House, Upper Tulse Hill, London SW2 2RX. Tel: 0181-674 0556; Andy Pirson, 13 Belvedere Close, Teddington Middlesex, TW11 0NT. Tel: 0181-943 5344; Ian Amy, 89 Woodfield Road, Thames Ditton, Surrey, KT7 0DS.

**SUBSCRIPTIONS:** £7.00 for 11 editions should be sent to: Stan Tompkins, 122 Manor Way, Uxbridge, Middlesex, UB8 2BH.

**ADVERTISING:** Barry Tillbrook. Tel: 0181-989 7523.

**Please be sure to send all Diary material to Andy Pirson.**

Printed by Ark Litho Ltd., Silverglade, 405 Leatherhead Road, Chessington, Surrey, KT9 2QL

**Landlords - do you value your CAMRA Good Beer Guide entry?**

**If so, rip out those fake handpumps and install an ethical cider from an ethical company...**

**CIDER WITH ROSIE**

**telephone 0181 406 1411**

**fax 0181 406 1412**

**For real cider, at the best price available in the marketplace**



---

## EAST END NEWS

The name change game continues. In EC1, the Harrow, which has been closed for some time has re-opened and been re-named Compton's Bar and Bistro and if their menu is correct sell London Pride at 220p while further south the Blue Posts has become the latest cafe style bar called Jacomo's. They are advertising salsa one night in the week. Isn't that the light wood they make model airplanes out of? The thought of hoards of people turning up clutching their Airfix glue and elastic bands and plastic propellers is enough to make the mind boggle. The bar/bistro/brassiere seems to be quite popular in this area. A Dome has opened at 61 Charterhouse Street whilst in nearby St John Street at number 38/4 is the Vic Naylor Bar & Grill, at 26 is the Bakery Bar selling Youngs Bitter and Special if the menu is to be believed and at 20 is the Longroom Restaurant & Bar which is there the Adnams Brewery presentation was held in April and their bitter is served on gravity there I am gold. Ex pub spotters will have noticed the cross keys sculptured in the frontage next door. Any place calling themselves bars/bistros or brassieres that did not sell real ale did not get into the East London & City Beer Guide, page 8 refers. Anyway I thought a brassiere was a ladies undergarment. But then again I thought the saying 'Head them up, move them out' had something to do with the T series Rawhide until I saw the advert for Wonderbra. Here is the rest of the news:

**E1**

**PROSPECT OF WHITBY:** Range at May 96 was Courage Best (£2), Directors, Theakston Best and XB.

**WHITE SWAN & CUCKOO:** Range at May 96 was Ruddles Best and County, Courage Best, Websters Yorkshire Bitter plus a guest beer.

**E2**

**JEREMIAH BULLFROG:** Closed and for sale April 96.

**E3**

**LITTLE DRIVER:** Sells only Bass.

**E7**

**LIVE & LET LIVE:** Range in April 96 was Worthington Best and Burtonwood Top Hat as guest beer.

**E9**

**McCANNs:** Sells only Hancock HB (Mar 96).

**PENSHURST ARMS:** Three guest beers.

**ROYAL STANDARD:** Add London Pride.

**E15**

**STEAMSHIP:** Real ale not always available.

**Keith Emmerson.**

---

## NEWS FROM YOUNG'S BREWERY

A brewery chairman has appealed to bosses in other industries to wake up to the benefits of a swift half at lunchtime for their employees.

Announcing a 6.6 per cent increase in trading profit in his company's annual results, John Young, chairman of Young's, said changes in people's drinking habits were having an adverse effect on the brewing industry and pub trade.

"We have had a good year in difficult trading circumstances but it would have been better had it not been all work and no play for an increasing number of people," he said.

"The British pub offers amazing value in both food and drink. It is the perfect place to relax, talk to friends and to recharge the batteries after a hard morning's work.

"Many companies, local authorities and Government departments now prohibit their workers from going to the pub at lunchtime, but this is a shortsighted policy because a change of scenery and a walk down the street can do people a power of good.

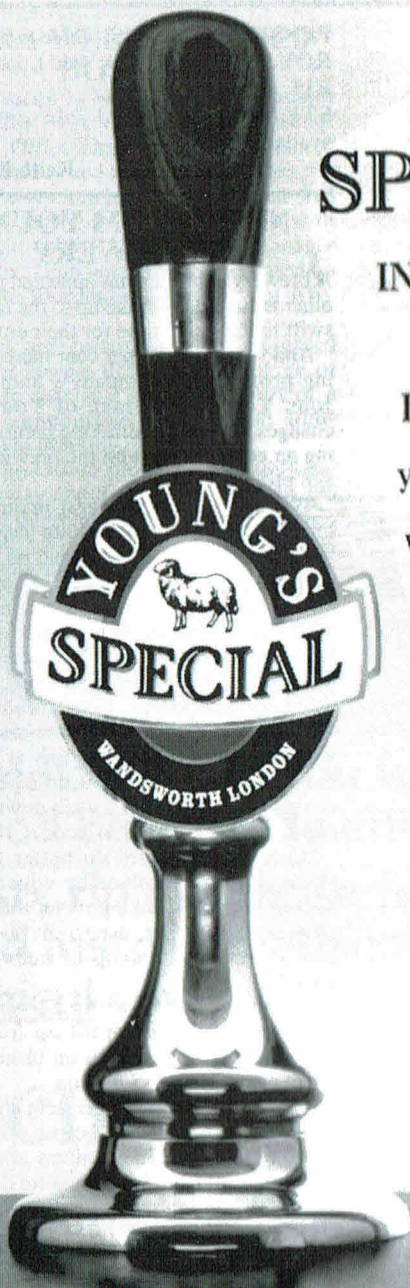
"Companies would do better to combat stress in the workplace by educating their staff in sensible drinking rather than stopping drinking altogether, especially as it is now recognised that a drop of beer does you good."

Young's results for the 52 weeks to 30 March show trading profit up from £42.52 million to £43.47 million on turnover up to 2.6 per cent at £73.88 million.

Profit was down 1.5 per cent, from £5.31 million to £5.23 million before tax and from £3.62 million to £3.56 million after tax, but Mr Young said these figures were distorted by an unusually high profit on disposal of fixed assets last year - £901,751 compared with £251,435 in 1995-96.

"Without this huge drop in profit from the sale of property, which in no way reflects our trading performance, our profit before tax would have been up by almost 13 per cent," he said.

---



# WE SPECIALISE

IN EVERY CORNER OF  
THE COUNTRY

If your Landlord doesn't  
yet stock this famous ale,  
we can advise on supply  
on the Young's helpline



Young & Co.'s Brewery  
Telephone: 0181-870 0141



---

## BUDWEISER BUDVAR - A TASTE OF HISTORY -

Brewed to an ABV of 5%, Budweiser Budvar is an all malt beer using carefully selected Moravian Pilsner malt, the finest Saaz hops, and soft water drawn from exclusive wells over 300m deep.

Downing an annual average of 162 litres per head, for every man, woman and child in the Republic, the Czechs are confirmed as the largest beer drinkers in the world.

Not content with just drinking a huge quantity of beer, the Czechs also like to read about it. *Pivní Kuryr* is the Czech beer drinkers magazine and is read by no less than 0.36% of the total population. In a recent consumer poll, regarded as the definitive Czech awards, Budweiser Budvar was voted "Beer of the Year" for 1995.

The name "Budweiser" actually originates from the small South Bohemian town of České Budejovice, which, during the days of the Austro-Hungarian Empire, was known in German as Budweis.

In the fifteenth century České was home to the Royal Court Brewery of Bohemia. Beers from the court brewery were hence known as the "Beer of Kings," whilst the town's brews became famous under the generic title of "Budweisers".

The history of Budvar begins with the founding of České in 1265. However, there is strong evidence to suggest that beer was known in the region from as far back as the third century BC.

Unbeknown to carol singers everywhere, Good King Wenceslas I was a big beer fan. During his period as monarch (mid-thirteenth century) he lent great support to the Bohemian brewing industry.

With the second world war came German occupation. They were so taken with Budweiser Budvar that they tried to keep it from the rest of the world by halting export to everywhere except Italy, Yugoslavia, and of course the Reich.

Soon restrictions were imposed on the use of raw materials, which affected Budvar's taste and alcoholic strength. These made little difference to the beer loving Germans however, as the restrictions did not apply to them; they continued to enjoy unadulterated

Budweiser Budvar.

After liberation came communism and the closing of the Iron Curtain.

To a greater extent, the line taken by the communist government in Czechoslovakia was determined by the Soviet Union itself. So, in 1949, to keep the Red Might 'sweet', the brewery sent Stalin a special case of eighteen bottles of Budvar and six engraved glasses. In effect, this gift was the first post-war export to the USSR.

Heightened by the Cold War, Czechoslovakia disappeared from Western eyes for many years, and to some extent Budvar followed suit. Although it became available only in other socialist countries, and those countries which presented no political obstacles, its popularity continued to rise.

Budweiser Budvar witnessed many things in 1968: the Prague Spring; the invasion by a combined Red army, and the subsequent clamp-down of liberalism by the authorities. Unlikely as it may seem, Budvar continued to flourish, albeit to the detriment of the beer loving Czechs; until the end of the 1980s almost 75% of Budvar was exported, making it easier to find abroad than at home.

With the demise of the Communists in 1989, the Budweiser Budvar brewery began an uncompromising modernisation programme. Modernising to increase capacity, and uncompromising by rigorously adhering to traditional brewing methods. The increase in capacity meant that the brewery was able to even out supplies to the home market. Budweiser Budvar became readily available to the Czechs themselves, whilst continuing to be the Czech Republic's best beer, Budweiser Budvar continues to be one of the world's great beers.

---

## AN INTERESTING HAND OUT FROM THE BREWERS SOCIETY

Beer from France, where excise duty is one seventh the UK rate, if flooding into Britain at the rate of over 1.1 million pints a day.

This trade, because of the UK's beer duty regime is harming the British pub, forcing many to close and costing hundreds of jobs.

---

## WEST MIDDLESEX NEWS

Two successive Fridays and two successive brewery trips - both in the branch area! How was this possible? Well, those of you who attended Beer on Broadway in April (our most successful beer festival yet) or read recent London Drinker magazines will know that a do-it-yourself brewing emporium has opened in Acton and that a local beer is now also commercially available in the area.

Firstly, without wanting to duplicate the previous feature too much, Mr. Bung's provide all the requisite materials and equipment you need to brew 80 pints of your favourite tipple -you just supply the labour! For £10, CAMRA members can join at nearly a quarter of the going rate for non-members and, in mid-May we were invited to indulge in an evening sampling session of some of the 200 plus beer recipes available. Although the regular brews are all malt extract and those on the night were bottle conditioned, the standards that can be attained were exemplary with at one end of the range milds, stouts and porters and at the other lagers and a Chimay style beer sampled along with various strengths and styles of bitters in between. Apparently, intending brewers are not tied to follow any particular recipe and may soon be able to batch just 40 pints with a swap facility for those who want their beers to gain wider acclaim (or opprobrium) or can't take the quantity without variety!

The following Friday evening saw local branch members invited to taste the first brew made at the new premises of Gerry Scanlon's brewery in Trout Road, Yiewsley. A new beer, Middlesex Gold will complement the existing Scanlon's Spike which will continue as a Rebellion Brewery product for the time being. Four different versions of Middlesex Gold were available, varying in hop type and rate, and imbibers were requested to make their preferences known. The consensus among those "aficionados" present was for an (admittedly mistakenly) doubly dry hopped version using New Zealand Hallertau hops but a brew hopped with Czech Styrian Goldings was considered a possibly more saleable product. The other two used Oregon Fuggles and American Cascades but these were somewhat overshadowed by their exceptionally more bitter and/or aromatic cousins! By the time you read this the final version should have

been decided upon with some favoured free houses having sold some of these initial brews for further market research. Give this light, refreshing beer a try!

West Middlesex CAMRA wishes both Gerry Scanlon and Mr. Bung's all the success deserving of such enterprising concerns and hopes that these breweries fare better than the predominantly club trade oriented Union Brewery of Hayes from over a decade ago.

## FULLERS PROFITS UP

Just as we were going to press, we received a copy of Fuller's preliminary accounts for the year to 30th March 1996. These show a healthy trading situation with pre-tax profits up by 21% on 1994/5 at £10.6 million. This was on a turnover of £91.4 million, up by 7%. At present Fuller's shares are quoted on the Unlisted Securities Market (USM) which is a kind of second division of shares (or first division if you follow Association Football). The USM, however, will cease to operate at the end of the year and in the light of this the company have looked at their position and decided to go for a full listing.

# Trinity Arms

BEER OF THE MONTH:

**REBELLION  
OLYMPIC GOLD  
4.3%**

BOTTLE CONDITIONED ALES

- ◆ Wednesday: Piano Bar 9 pm
- ◆ Thursday: Jazz 8.30 pm
- ◆ Sunday: Quiz 8.30 pm
- ◆ Open all permitted hours
- ◆ Nearest tube Borough

**7 Trinity Sreet, London SE1**

Tel 0171 207 5662



Advertise in next month's

# LONDON DRINKER

and get your message direct to the brewers,  
pub owners, licensees, festival organisers, pub  
regulars and drinkers of London and beyond

Call now, day or evening, 7 days a week

**BARRY TILLBROOK**

**0181 989 7523**

## CLOSURES

*Regrettably the following breweries have  
closed*

**COMBE BREWERY.** Mullacote Industrial  
Estate, Ilfracombe, Devon EX34 8PL. Tel:  
01271 86402.

**NIX WINCOTT BREWERY.** Three Fysh-  
es, Turvey. Closed temporarily, brewery will  
be moved and reopened at Priory Farm, Bed-  
ford Road, Turvey.

**GLASCHU BREWERY.** 250 Woodlands,  
Glasgow. Closed due to refusal of planning  
permission.

**PLYMTON BREWERY** (Carlsberg-Tetley  
Brewery), Plymouth. Closed. Dartmoor Bitter  
is now being brewed by St. Austell Brewery,  
Cornwall.

**McINTOSH'S CROFTHEAD BREW-  
ERY** Livingston, West Lothian. Closed  
December 1995.

**JOLLY ROGER BREWERY.** 31-33 Friar  
Street, Worcester, Hereford and Worcester  
WR1 2NA.

## THE SCALE OF THE PROBLEM

Imports of beer (duty paid in France) in 1994  
were 2,300,000 hectolitres.

This equates to more than 1.4 million bar-  
rels or over 404,000,000 pints.

This equivalent to four per cent of the  
British beer market (16.5 per cent of the take-  
home trade). The lost retail spend from duty  
paid imports on beer alone was £540 million

in 1994.

The volume of cross channel beer is the  
equivalent of the annual sales of all the pubs  
in Kent and Sussex, or all of the pubs in West  
Yorkshire, or all the pubs in Tyne and Wear  
and Cleveland or all the pubs in the West  
Midlands.

Even marginal falls in beer sales can quickly  
push a pub into a loss.

## MAGIC SELL OUT

Skimming through the financial pages of a  
newspaper (well, the Sun actually) at work I  
spotted a short piece about Michael Cannon  
who is set to make a personal £70 million.  
There was a picture of a (not surprisingly)  
smiling Mr. Cannon sitting astride (bet you  
can't guess...) a cannon.

The real item of news from this is that the  
Magic Pub Co. has been bought by Greene  
King for something in excess of  
£400 million. Mr. Cannon is the major  
shareholder in Magic and this has reportedly  
led to him earning the equivalent of about  
three rollover week jackpots in one go.

**SOUTHAMPTON**

# BEER FESTIVAL

a new addition to the Balloon and Flower Festival at  
Southampton Common  
**5, 6, and 7 July 1996**

**Friday 5 July**  
5pm to 10.30pm  
Admission £4.00

**Saturday 6 July**  
11.00am to 3.00pm  
Admission £3.50  
5.00pm to 10.30pm  
Admission £4.00

**Sunday 7 July**  
Noon to 4.00pm  
Admission £3.50

- \* **SOUVENIR GLASS**
- \* **30 PLUS BEERS**
- \* **CIDERS AND PERRIES**
- \* **IMPORTED BEERS**
- \* **FOOD FOR SALE**
- \* **ENTERTAINMENT**
- \* **PUBLIC TRANSPORT NEARBY**

£1.00 of Free Beer to card carrying CAMRA members  
For information ☎ 01703 786778 or 01703 832906

**TICKETS AVAILABLE FROM**

**Steve and Charlie**  
*extend a warm  
 welcome to all fellow  
 CAMRA members and  
 lovers of a good pint*

# MAGPIE & CROWN

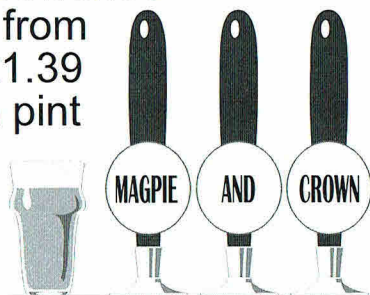
128 High Street  
 Brentford

0181 560 5658

- \* Traditional Cider
- \* Draught Czech Budvar
- \* Draught Hofbräu
- \* Bed & Breakfast
- \* Open all permitted hours

Ever changing guest  
 beers from micro  
 and small regional  
 breweries

- from  
 £1.39  
 a pint



\* singing voice required Friday evenings

## NEW BREWERIES BY COUNTY

*New breweries listed by name*  
**ENGLAND**

**Berkshire:** West Berkshire Brewery  
**Buckinghamshire:** Shires Brewery. The Little  
 brewing Company. Stage & Griffin Brewery  
**Cumbria:** Bitter End. Coniston Brewery. Old  
 Cottage Beer Company.  
**Durham:** High Force Hotel.  
**Hampshire:** Raven.  
**Hereford & Worcester:** Ledbury Brewery.  
 Brandy Cask.  
**Hertfordshire:** Original Brewing Co.  
**Kent:** Kilderkin Brewery. Minnis Brewery.  
 Swale Brewery. Viking Brewer. The Jellystone  
 Brewing Company.  
**Leicestershire:** Grain Store Brewery. Original  
 Brewing Co.  
**Lincolnshire:** Stamford Brewery Museum.  
 Fulbeck Brewery.  
**Greater London:** Hedgehog & Hogshead  
 (Highbury Corner). Hedgehog & Hogshead  
 (Sutton). O'Hanlon Brewing Company Limited.  
**Greater Manchester:** Bank Top Brewery.  
 Peaches.  
**Norfolk:** Wolf Brewery. York Tavern.  
**Northamptonshire:** Hop House Brewery.  
**Northumberland:** Northumberland Brewery.  
**North Yorkshire:** Easingwold Brewery.  
**Nottinghamshire:** Barncote Brewing Company.  
 King & Smart/Red Imp Brewery. Mallard  
 Brewery.  
**Shropshire:** Salopian Brewery.  
**Somerset:** Bath Ales. Moor Beer Company.  
**Staffordshire:** Dark Peak Brewery.  
**Suffolk:** Blue Boar Brewery. St. Peter's  
 Brewery.  
**Surrey:** North Downs Brewery.  
**Sussex:** Weltons North Downs Brewery.  
**West Midlands:** Beowolf Brewery.  
**Wiltshire:** Wylc Valley Brewery.  
**South Yorkshire:** Glentworth Brewery.  
 Riverhead Brewery.  
**Warwickshire:** Warwickshire Brewery Ltd.  
 Feldon Brewery.  
**West Yorkshire:** Black Horse Brewery.  
 Eastwood Brewery. Tigertops Brewery.

### WALES

**Dyfed:** Nags Head. Tomos Watkins and Sons.  
**Gwynned:** Cambrian Brewery.  
**Powys:** Red Lion Hotel.

### SCOTLAND

**Highland:** Leann an Eileans (Isle of Skye)  
**Fife:** Backdyke Brewing Company. Burntisland  
 Brewery.  
**Strathclyde:** Lugton Brewery  
**Tayside:** Moulin Brewery.

### IRELAND

Biddy Early Brewery. Whitewater Brewery  
 Company.



---

## BEER BRIEFING

### LONDON BEER GUIDES UPDATE 115

**This month we record six new pubs, all south of the Thames, one each in SE13 Lewisham, SW4 Vauxhall, Morden and North Cheam and two in Croydon. The Lewisham pub is a large new Yates's Wine Lodge, the third of the new wave of outlets in London. One of the Croydon pubs is from Morlands, following on from its first London venture in Sutton. Two more pseudo-Irish conversions from Bass have appeared. The latest non-brewing Firkin has opened in W1 Soho.**

The numbers in brackets after each entry refer to the page number in the following guides: E - East London & City Beer Guide, 3rd edition; K - 'Real Ale Drinkers Guide to Kent Pubs', 8th edition; N - North London Beer Guide, 3rd edition; SE - South East London Pub Guide, 4th edition; 3SE - South East London Pub Guide, 3rd edition; SW - Real Beer in South West London; W - Real Beer in West London; X - Essex Beer Guide, 8th edition. U refers to earlier updates. # indicates a guest beer.

If you would like to report changes to pubs or beers please write to: Beer Guides Updates, 2 Sandtoft Road, London SE7 7LR.

#### **NEW & REOPENED PUBS & PUBS CONVERTED TO REAL ALE**

##### **CENTRAL**

**W1(S), BLUE POSTS**, 28 Rupert Street. Boddington: Bitter. Flowers: Original Bitter. Greene King: Abbot Ale. Hall & Woodhouse: Tanglefoot. Marston: Pedigree. Morland: Old Speckled Hen. Whitbread: Abroad Cooper, Castle Eden Ale. Scrumpy Jack: Old Hazy Cider. Small pub now transferred to Whitbread Hogshead chain and a very late entrant to real ale. (W41)

##### **SOUTH EAST**

**SE13, YATES'S WINE LODGE**, 67-71 Lewisham High Street. Boddington: Bitter. Courage: Directors Bitter. John Smith: Bitter. Opened at the end of May, this large brightly lit spacious bar has been converted in typical Yates's style from a former Co-op department store dating from 1933 which in its latter days had become an indoor market. Lists of wines and beers sold together with prices are prominently displayed above the bar. The wood panelled walls are adorned with old black & white photos of Yates's Wine Lodges mainly in the north of England. There are raised carpeted areas with extensive seating on either side of the main bar. Spacious and decorative 'Gents' ('Ladies' not inspected). A covered patio has been erected at the front for outdoor drinking. Opens 10am for breakfast and food menu available until 6pm. Disabled WC. Open all permitted hours. A dismal range of beers for such a well established pub chain,

given the possibilities now available and the obvious potential of the pub.

**SE19, WHITE HART**, 96 Church Road. Bass. Renamed **O'NEILLS**. Converted to pseudo Irish theme in garish yellow colours. (SE181, U102)

**SE20, PARK TAVERN**, 1 Station Road, Penge. Renamed **HOLLYWOOD EAST**. Courage: Best Bitter, Directors Bitter. Refurbished and presumably now Free or Charrington. A glitzy cocktail bar style decor incorporating a Chinese restaurant. (SE190)

**CROYDON, PALS**, 13/14 Norfolk House, Wellesley Road. Boddington: Bitter. Fuller: London Pride. John Smith: Bitter. New Free House "Bar & Brasserie" in former shop unit. Decorated in cafe-bar style with glass frontage, polished floor and pine furniture. Emphasis on wine and food. Jazz on Wednesday evenings. Opens 11-11 Mon-Wed, 11-12 Thu, 11-1am Fri, 12-1am Sat, 7-10.30 Sun.

**CROYDON, WIG & PEN**, 28-30 St Georges Walk. Bass. Ind Coope: Burton Ale. Morland: Independent IPA, Old Speckled Hen. Tetley: Bitter. Theakston: Best Bitter. New Morlands pub, the first of its "Wig & Pen" chain in London, in former restaurant premises. Dark wood panelling and polished wood floor in traditional style with raised carpeted seating area at side. Legal theme with appropriate pictures on the walls. Happy hour 5-7pm Mon-Fri (20% off). Disabled WC. Food 12-8. Opens 11.30-11 Mon-Sat, closed Sun.

*Continued on page 30*

**SOUTH WEST**

**SW2, CHESTNUT**, 198 Upper Tulse Hill. Ruddle: Best Bitter, County. Webster: Yorkshire Bitter. (SW19, U108)

**SW3, PRINCESS OF WALES**, 145 Dovehouse Street. Reopened and renamed **P O W (PRINCESS OF WALES)**. Courage: Directors Bitter (£1.75 a half! Is this the most expensive in London?) Refurbished as a bar-restaurant with emphasis on food. Yet another good pub is lost to those with more money than sense, following hard on the heels of the Queens Elm and the Rose. (SW22, U78, U113)

**SW8, CAFE MONEYPENNY**, Market Towers, 1 Nine Elms Lane. Young: Special. New Free House opened in Oct 1995 at the base of Market Towers. Light and airy, furnished in cafe-bar style with chairs and tables throughout. Raised restaurant area. Replaces PODIUM, a first floor bar not previously reported.

**SW9, ATLANTIC**, 389 Coldharbour Lane. Reopened and renamed **DOGSTAR**, still fizz. Now a Free House, ex Grand Met (Courage). (SW36)

**SW18, ROUNDHOUSE**, 2 Wandsworth Common North Side. Courage: Directors Bitter. Guest beer. Now Innentrepreneur, ex Watney. Guest beer may increase to four. (SW54, U56, U108)

**CHEAM, CAVERN**, 460 London Road, North Cheam. Boddington: Bitter. Flowers: IPA, Original Bitter. New music oriented Free House in former restaurant premises. Pictures and posters of rock musicians adorn the walls. Tiled bar area with raised carpeted seating area to side. Food. Opens 11-11 Mon-Wed, 11-12 Thu-Sat, 12-12 Sun.

**MORDEN, MORDEN HALL**, 21 Morden Hall Road. Boddington: Bitter. Flowers: Original Bitter. Guest beers. 18th Century listed building in Morden Hall Park restored and tastefully furnished by Whitbread as part of Beefeater chain, opened in May 1996. Separate bar area with bar food and 150 seat restaurant. Car park. Garden. Open all permitted hours.

**WALLINGTON, GINOS**, 53 Woodcote

Road. No real ale. Free House/lounge bar and night club in former shop premises.

**PUBS CLOSED OR CEASED SELLING REAL ALE**

**SOUTH EAST**

**SE8, FARRIERS ARMS**. Renamed **WHELANS**. Now a Free House, ex Charrington. No real ale. (SE79)

**SE16, WARRIOR**. Charrington. closed, future uncertain. (SE153)

**SOUTH WEST**

**SW8, KING WILLIAM IV**. Charrington. Now converted to flats. (SW33, U58)

**SW11, LONDON CHATHAM & DOVER RAILWAY TAVERN & RESTAURANT**. Grand Met (Watney). Now converted to a club. (SW40, U42, U43, U77, U108)

**SW12, PUMP & RACKET**. Free House. Closed, leisure centre no longer has a bar. (U36, U52)

**CARSHALTON, CRICKETERS**. Charrington. Demolished and site redeveloped for housing. (SW60, U82)

**WALLINGTON, CAVALIER**. Free House. Closed and boarded up, future uncertain. (SW59, U43)

**WALLINGTON, MELBOURNE**. Renamed **O'NEILLS**. Charrington, H unused. (SW59, U43, U108)

**OTHER CHANGES TO PUBS & BEER RANGES**

**CENTRAL**

**W1(MAY), KINGS ARMS**. -Ruddle: Best Bitter. -Theakston: Best Bitter. +Wadworth: 6X. (W39, U95, U106)

**W1(S), AIN'T NOTHING BUT**. -Beers listed except Adnams Bitter. +2 Guest beers. (U91, U111)

**W1(S), BLUE POSTS**, 18 Kingly Street. -Brakspear: Bitter. +Flowers: Original Bitter. +Marston: Pedigree. (W41, U80, U90)

**W1(S), DEVONSHIRE ARMS**. -John Smith: Bitter. -Wadworth: 6X. +Theakston: Best Bitter, XB. Confirmed as S&N, ex Grand Met (Watney and subsequently a Clifton Inns "Free House"). (W42, U90, U106, Corrections below)

**W1(S), DOG & TRUMPET**. Renamed **FANFARE & FIRKIN**. -Beers listed.

*Continued on page 32*



*Continued from page 16*

*done by a different shopfitter. This is (maybe unfortunately) a fact of present day life; it's the same with Sainsbury's, Tesco's, Midland Banks etc etc. Once upon a time not so very long ago a French restaurant was, almost by definition, an individual establishment with its own proprietor and its own character, although working within a recognisable style of gingham check tablecloths and the like. Nowadays just about every town of any size has its Cafe Rouge.*

*I have no problem at all with new Wetherspoon (and similar) pubs all looking the same. The problem comes when perfectly good real traditional pubs are turned into "traditional pubs" by the likes of the Magic Pub Co by ripping out the carpets, hacking the plaster off the walls and smothering them with bric-a-brac and enamel adverts bought by the square yard and dusty books bought by the foot from some warehouse or other.*

*Concerning the Horse & Groom, I know a lady member of their quiz team who only enjoyed the away matches where she could drink something reasonable. And (joy of joys!) it's going to be turned into a Pizza Express. Now isn't that good news!*

**Andy Pirson**

## **FREE BEER & A PUB CRAWL!!**

How do you fancy a free pint as a reward for going on a pub crawl one evening? Or a free buffet and a couple of free pints if you manage a whole afternoon of visiting pubs? Sounds like your idea of fun? They why not join us and help publicise the Great British Beer Festival in some of the wonderful pubs in the centre of London?

There are three events arranged:

**Thursday 27th June:** Join the party at either the Freemasons Arms, Long Acre WC2 at 6.30pm or at 8.15pm at the Chandos, St Martins Lane, WC2; finishing at the Ship, 116 Wardour Street W1 and a free pint.

**Saturday 13th July:** Start at 11.15am at Star Gazy, Fulham Road, Chelsea. Finish back there at 4pm with a free buffet and free beer courtesy of Fuller's.

**Tuesday 16th July:** Join the party at either the Windmill, 6 Mill Street, W1 at 6.30pm or at 8.15pm at the Worcester Arms, 89 George Street W1. Finish at the George & Dragon, 151 Cleveland Street and a free pint.

For further information contact Anne Lodge  
0181 889 0513.

# **STATION ARMS**

## **HANNAHS MENU**

**39 Station Road, Southminster, Essex. Tel: (01621) 772225**

# **BEER FESTIVAL**

## **JULY 12 - 13 - 14**

**Fri: 5.30pm-11pm; Sat: Noon-11pm; Sun: Noon-10.30pm**

**20+ different Real Ales • BBQ • Live Entertainment**

**- only 200 yards from Southminster railway station**

**Last train back to Liverpool Street (change at Wickford)**

**Fri: departs 22.44; Sat: departs 22.47; Sun: departs 22.16**



+Firkin: Full Mash Mild (3.4%), Wind Ale (3.5%), Fanfare (4.3%), Hornblower (Golden Glory) (5.0%), Dogbolter (5.6%). +Guest Firkin beer (currently Beltane from Friesian & Firkin brewery). +Weston: Old Rosie Scrumpy Extra Strong Cider. Latest non-brewing Allied Firkin conversion in typical style with "trumpet" theme reflecting former name. Beers brewed at various London Firkin breweries. Polished floors, barrel tables and pews, stage with piano, plus video screen and loud recorded music (in evening). Baps available all day, menu until 6pm. Outside drinking area. Open all permitted hours. (W42, U48)

**WI(S), RED LION**, 14 Kingly Street. -Sam Smith: Museum Ale. Not previously reported. Retains handpump for OBB. (W44)  
**WC2, MARQUIS OF GRANBY**, 51 Chandos Place. -Beers listed except Ind Coope Burton Ale. +Adnams: Bitter. +Marquis: Bitter (house beer). +Tetley: Bitter. (W55, U54)

**WC2, P J MOLLOY & SON**. Renamed **O'NEILLS**. -Bass Museum: Wicklow Ale. +Worthington: Best Bitter. One of Bass' early pseudo-Irish pub conversions, now absorbed into the ubiquitous O'Neills chain. Originally **WHITE SWAN**. (W57, U106)

**SOUTH WEST**

**SW1(P), ORANGE KIPPER**. -Beers listed except Boddington: Bitter. +Bass. +Courage: Best Bitter. (SW15, U75, U98, U108)

**SW3, RAT & CARROT (BEEHIVE)**. -Beers listed except Boddington: Bitter. +Brakspear: Bitter. +Courage: Directors Bitter. +Fuller: London Pride. +Gibbs Mew: Salisbury Bitter. (SW21, U64, U98)

**SW4, CLOCK HOUSE**. Now a Free House, ex Grand Met (Courage), still fizz. (SW24, U39, U109)

**SW4, DUKE OF YORK**. Now a Standwood Taverns Free House, ex Charrington (SW24, U34, U107)

**SW4, FRIESIAN & FIRKIN**. -Tetley: Bitter. Formerly **BULLS HEAD**. (SW24, U74, U79)

**SW4, ROSE & CROWN**. -Harvey: Best Bitter. +Guest beer. (SW25, U56, U74, U87, U89, U109)

**SW6, SLUG & LETTUCE**. -Bass. -Ruddle: Best Bitter. +Courage: Best Bitter. Formerly **KINGS HEAD TAVERN**. (SW29, U45, U63, U99)

**SW9, COACH & HORSES**. -Beers listed. +Greene King: Abbot Ale. +Hook Norton: Old Hooky. Now a Free House, ex Taylor Walker. (SW36, U34, U68)

**SW9, DUKE OF EDINBURGH**. -Beers listed. +Courage: Best Bitter. Now a Free House, ex Grand Met (Truman). (SW36, U51)

**SW9, PRINCE OF WALES**. -Beers listed. +Bass. +Worthington: Best Bitter. Refurbished. (SW37, U43, U46, U50)

**SW11, ANCHOR (CHARLIES)**. Now simply **ANCHOR**. -Beers listed. +John Smith: Bitter. +Morland: Old Speckled Hen. +Webster: Green Label. (SW39, U58, U78)

**SW11, SOMERS ARMS**. Address now 2A Rochelle Close. -Beers listed. +Courage: Best Bitter. (SW41, U78)

**SW11, FISHMONGERS ARMS**. Renamed **MESS (THE)**. -Charrington: IPA. +Bass. +Worthington: Best Bitter. +2 Guest beers. Refurbished in bare floorboards style. (SW39)

**SW15, NORTHUMBERLAND ARMS**. Now an Ascot Estates (ex Belhaven) pub, formerly Grand Met (Watney). (SW47, U29, U63, U109)

**SW15, STAR & GARTER**. Now a Glendale Leisure Free House. (SW47, U56, U75, U109)

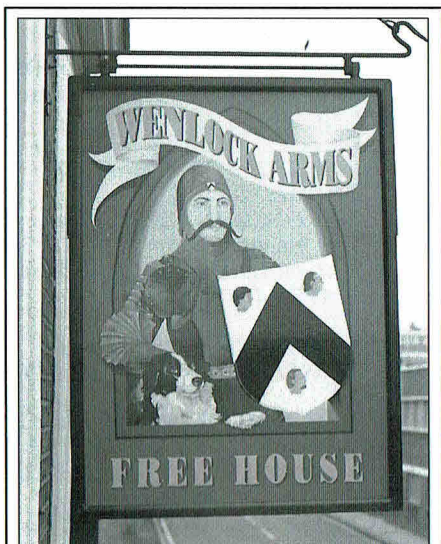
**SW16, WHITE LION**. -Beers listed except Webster Yorkshire Bitter. +Courage: Best Bitter, Directors Bitter. +Ruddle: County. +Wychwood: Shires Bitter, Fiddlers Elbow, Hobgoblin, Dogs Bollocks. Now a Wychwood pub, ex Grand Met (Watney), possibly leased. (SW49, U39, U58, U60)

**SW17, NEW FOUNTAIN**. -Ruddle: Best Bitter. +Webster: Green Label. Formerly **TOOTING PALACE**, **GIN PALACE** and **FOUNTAIN (SPORTS)**. Now a Free House, ex Grand Met (Watney). (SW50, U40, U43, U92, U112)

**SW19, WHITE HART**. Renamed **BODHRAN BARNEYS**. -Greene King: Abbot Ale. +Flowers: Original Bitter. +Marston: Pedigree. Converted to Irish style but has avoided the clutter and gloominess of many of its like. (SW56, U55, U58, U60, U73)

*Continued on page 34*





*A genuine Free House featuring a selection of the very best in Cask Ales, Traditional Cider and Perry*

- Mild always available
- Lined glasses guarantee full pints
- Salt Beef Sandwiches
- Function room free to CAMRA members
- Jazz piano Sunday lunchtimes
- Jazz every Friday and 3rd Saturday evening in the month
- Open all permitted hours

**CAMRA**  
NORTH LONDON  
**PUB OF THE YEAR**  
1995 & 1996

**26 Wenlock Road**  
**London N1**

0171 608 3406

Nearest Tube stations are Old Street (exit 1) and Angel. Wenlock Road is off City Road via Windsor Terrace

## A SMUGGLERS CHARTER

In the pre-Christmas season, last year, around 57 vans, from as far afield as Inverness and Belfast were crossing the Channel each day.

In March about 150 vans full of beer were crossing the Channel every day, and during May there were 277 vans crossing daily, 64 per cent up on last year.

It is estimated that at least one-third of the beer coming in from France is brought in by smugglers and destined for illegal resale.

A survey of pub customers just before Christmas last year found that 34 per cent had been offered bootlegged beer.

## HOLIDAY IN BRADFORD?

The Bradford branch of CAMRA have announced the itinerary (provisional) for the Real Ale Holiday in Yorkshire for 1996. Based in the New Beehive in Westgate Bradford, it starts on the evening of Thursday 18th July through to Tuesday 23rd. All transport on the holiday and accommodation is included in the £190. Trips to Keighley and Wakefield could be on the agenda as could the new Transperience Museum and a canal ride. A home-brew pub in Marsden, the Sair at Linthwaite (what a wonderful pub this is), Hornsea, Hull, Otley and Dacre Banks may also form part of the holiday. If you are fed up drinking the beer then walks through the cow pats have been arranged by Buffalo Lou Cody. The usual array of regulars of the holiday will no doubt be in attendance. See if you can spot the man from Gainsborough with his Hawaii shirts or the Rupert Bear trousers of east London. Or you can spend the time trying to spot a Yorkshireman with his hands in his pocket about to buy a round, tough one this. Local Des Ward will entertain with his impersonation of an East Ender and we may be in for a treat if wasp dancer Muir is in attendance. And if the beer does not get you the curries will! Even the advertising manager of London Drinker and his good lady wife have been on this one, what more recommendation does one need? Further information from Josie and Dave Boothroyd, 26 Summerbridge Drive, Eccleshill, Bradford BD10 0ER.

Continued from page 3

- 6-10 Aug Great British Beer Festival**  
Grand Hall  
Olympia, London W8
- 16-17 Aug 21st Portsmouth**  
The Guildhall  
Portsmouth
- 6-9 Sept Oxford**  
Bus Museum  
Long Harbourough  
Nr Oxford
- 7- Sept Maidstone**  
Museum of Rural Life  
Sandling
- 12-15 Sept St Ivo Beer Festival**  
St Ivo Centre  
St Ives, Cambs
- 19-21 Sept North Herts**  
Plinston Hall  
Letchworth, Herts
- 2-5 Oct Bedford**  
Corn Exchange, Bedford
- 4-5 Oct Beers from the Woodville**  
Woodville Halls  
Gravesend
- 10-12 Oct St Albans Anniversary Beer Festival**  
Alban Arena  
St Albans

**BEER BRIEFING**  
**LONDON BEER GUIDES UPDATE 115**  
continued from page 34

**CARSHALTON, LORD PALMERSTON.**  
-John Smith: Magnet. +Marston: Pedigree.  
(SW60, U59)

### ***CORRECTIONS TO UPDATE 106***

***PUBS ACQUIRED BY S&N***

**W1(S), DEVONSHIRE ARMS.** Watney#  
(W42, U90). Omitted in error. Totals in 3rd  
paragraph of introduction should be adjusted  
to 489 and 485 respectively

### ***CORRECTIONS TO UPDATE 114***

***PUBS CLOSED OR CEASED SELLING  
REAL ALE***

**KINGSTON, GRIFFIN.** Refs should read  
(SW66, U98)

***OTHER CHANGES TO PUBS & BEER  
RANGES***

**SW4, CROWN & ANCHOR.** +Whitbread:  
Best Bitter should read +Worthington: Best  
Bitter.

### ***CORRECTIONS TO UPDATE 113***

**SW6, KAKANGHS.** Entire entry should  
read as follows:

**SW7, KAVANAGHS,** 108A Old Brompton  
Road. No real ale. H unused. New Irish  
basement bar which leads through to Jury's  
Kensington Hotel, Queens Gate, under the  
same management.

## **BRANCH CONTACTS**

LONDON PUBS GROUP	JEFF PRIMM	0181-683 3096 (H) 0171-973 3096 (W)
BROMLEY	See SOUTH EAST LONDON	
CROYDON & SUTTON	PAUL EVERITT	0181-686 5053 (H & W)
EAST LONDON & CITY	STEPHEN HARRIS	0181-519 0163 (H) 0171-270 8729 (W)
ENFIELD & BARNET	DEREK SMITH	0181-805 1436 (H & W)
KINGSTON & LEATHERHEAD	BRIAN BADE	0181-549 7486 (H & Fax)
NORTH LONDON	ALISON COX	0181-742 0498 (H) 0181-746 8148 (W)
RICHMOND & HOUNSLOW	BRIAN KIRTON	0181-384 7284 (H)
SOUTH EAST LONDON	ANDY CAMROUX	0181-854 1538 (H) 0181-331 8459 (W)
SOUTH WEST ESSEX	ANDREW CLIFTON	01708 765150 (H)
SOUTH WEST LONDON	MARTIN BUTLER	0181-542 3158 (H,W & Fax)
WATFORD & DISTRICT	TONY SMITH	01923 221155 (H & W) Fax: 01923 218625
WEST LONDON	BRIONY KERSHAW	0181-747 4890 (H) 0181-752 7886 (W)
WEST MIDDLESEX	DAVE O'DRISCOLL	0181-427 7498 (H) 0171-725 3035 (W)



SW1 ORANGE KIPPER  
 SW1 PAVIOURS ARMS  
 SW1 RISING SUN  
 SW1 ROYAL OAK  
 SW2 HOPE & ANCHOR  
 SW2 CROWN & SCEPTRE  
 SW3 COOPERS ARMS  
 SW3 CROWN  
 SW3 SURPRISE  
 SW4 BEDFORD ARMS  
 SW4 ROSE & CROWN  
 SW6 DUKE OF CUMBERLAND  
 SW6 WHITE HORSE  
 SW7 ANGLESEA ARMS  
 SW8 OLD RED HOUSE  
 SW8 PRIORY ARMS  
 SW8 SURPRISE  
 SW10 FERRET & FIRKIN  
 SW10 KINGS ARMS, 190 Fulham Road  
 SW11 BEEHIVE  
 SW11 DUKE OF CAMBRIDGE  
 SW12 NIGHTINGALE  
 SW12 PRINCE OF WALES  
 SW13 BULLS HEAD  
 SW13 COACH & HORSES  
 SW13 RED LION  
 SW13 ROSE OF DENMARK  
 SW14 HALF-WAY HOUSE  
 SW14 HARE & HOUNDS  
 SW15 FOX & HOUNDS  
 SW15 GREEN MAN  
 SW15 RAILWAY  
 SW16 PIED BULL  
 SW17 CASTLE  
 SW17 J.J. MOONS  
 SW17 LEATHER BOTTLE  
 SW18 BREWERY TAP  
 SW18 HALF-WAY HOUSE  
 SW18 OLD SERGEANT  
 SW18 PIG & WHISTLE  
 SW18 SPOTTED DOG  
 SW18 SPREAD EAGLE  
 SW18 STAR & GARTER  
 SW19 BREWERY TAP  
 SW19 KINGS HEAD  
 SW19 PRINCE OF WALES, Morden Road  
 SW19 PRINCESS ROYAL  
 SW19 SULTAN  
 SW19 TRAFALGAR  
 SW19 WIBBAS DOWN INN  
 CARSHALTON, GREYHOUND  
 CARSHALTON, RAILWAY TAVERN  
 CARSHALTON, WINDSOR CASTLE  
 CHESSINGTON, NORTH STAR  
 CHEAM, RAILWAY  
 HAM, HAND & FLOWER  
 KEW, COACH & HORSES  
 KINGSTON, ARTFUL DODGER  
 KINGSTON, CANBURY ARMS  
 KINGSTON, COCOANUT  
 KINGSTON, CRICKETERS  
 KINGSTON, DRUIDS HEAD  
 KINGSTON, FIGHTING COCKS  
 KINGSTON, FLAMINGO BREWERY CO.  
 KINGSTON, KELLY ARMS  
 KINGSTON, NEWT & FERRET  
 KINGSTON, PARK TAVERN  
 KINGSTON, RAM  
 KINGSTON, SPRING GROVE  
 KINGSTON, TWO BREWERS  
 KINGSTON, WILLOUGHBY

ARMS  
 KINGSTON, WYCH ELM  
 MITCHAM, QUEENS HEAD, Cricket Green  
 MITCHAM, WHITE LION OF MORTIMER  
 MORDEN, WETHERSPOONS  
 NEW MALDEN, ROYAL OAK  
 RICHMOND, BELVEDERE  
 RICHMOND, DYSARTS  
 RICHMOND, ORANGE TREE  
 RICHMOND, SHAFTESBURY ARMS  
 RICHMOND, TRIPLE CROWN  
 RICHMOND, WATERMANS ARMS  
 RICHMOND, WHITE CROSS  
 SURBITON, DENBY DALE  
 SURBITON, NEW PRINCE  
 SURBITON, RISING SUN  
 SUTTON, FIELDER & FIRKIN  
 SUTTON, MOON ON THE HILL  
 SUTTON, NEW TOWN  
 WALLINGTON, WHISPERING MOON  
 W1 BEEHIVE, 7 Homer Street  
 W1 CLEVELAND ARMS  
 W1 JACK HORNER  
 W1 MOON & SIXPENCE  
 W1 MORTIMER ARMS  
 W1 PRINCE ALFRED  
 W1 WESTMORELAND ARMS  
 W1 WINDMILL  
 W2 ARCHERY TAVERN  
 W2 ROYAL STANDARD  
 W3 KINGS HEAD  
 W5 RED LION  
 W5 ROSE & CROWN  
 W5 WHEAT-SHEAF  
 W6 ANDOVER ARMS  
 W6 BROOK GREEN HOTEL  
 W6 RICHMOND ARMS  
 W10 VILLAGE INN  
 W11 FROG & FIRKIN  
 W12 MOON ON THE GREEN  
 W13 DRAYTON COURT  
 W13 THE FORESTER  
 W14 WARWICK ARMS  
 BRENTFORD, MAGPIE & CROWN  
 CRANFORD, QUEENS HEAD  
 FELTHAM, MOON ON THE SQUARE  
 HAMPTON, WHITE HART  
 HAMPTON COURT, KINGS ARMS  
 HAMPTON WICK, WHITE HART  
 HAYES, MOON UNDER WATER  
 HAYES END, MOON & SIXPENCE  
 HOUNSLOW, BEAVER  
 HOUNSLOW, CROSS LANCES  
 HOUNSLOW, MOON UNDER WATER  
 HOUNSLOW, SUN  
 ISLEWORTH, COUNTY ARMS  
 ISLEWORTH, VICTORIA  
 SOUTHALL, BEACONSFIELD ARMS  
 TEDDINGTON, LION  
 TEDDINGTON, QUEEN DOWAGER  
 TEDDINGTON, RAILWAY HOTEL  
 TEDDINGTON, WALDEGRAVE ARMS

TWICKENHAM, KINGS ARMS  
 TWICKENHAM, NELSON  
 UXBRIDGE, PRINCE OF WALES  
 WHITTON, ADMIRAL NELSON  
 WHITTON, WHITE HART  
**OFF TRADE**  
 W11 Grogblossom  
**CLUBS**  
 ISLEWORTH, Western Geophysical Social Club  
 W1 Polytechnic of Central London S.U. Bar, 104 Bolsover Street  
**OUTSIDE LONDON**  
 ADDLESTONE, CRICKETERS  
 ASCOT, CRANBOURNE TOWER  
 BRIGHTLINGSEA, RAILWAY  
 BRIGHTON, EVENING STAR  
 BRIGHTON, SUSSEX YEOMAN  
 CATERHAM ON THE HILL, KING & QUEEN  
 CHERTSEY, CASTLE  
 COLCHESTER, ODD ONE OUT  
 CROXLEY GREEN, SPORTSMAN  
 DENHAM (Bucks), LAMBERT ARMS  
 EAST MOLESEY, KINGS ARMS  
 EGHAM, JOLLY FARMERS  
 EGHAM, PRINCE OF WALES  
 EGHAM, WHITE LION  
 KNEBORTH (Herts), LYTTON ARMS  
 KNOWL HILL (Berks), OLD DEVIL  
 LALEHAM, FEATHERS  
 LEWES, GARDENERS ARMS  
 MANCHESTER, JOLLY ANGLERS  
 MORTIMER WEST END (Hants), RED LION  
 OUTWOOD (Surrey), DOG & DUCK  
 POTTERS BAR, CHEQUERS  
 READING, HOBGOBLIN  
 READING, HOP LEAF  
 READING, MONKS RETREAT  
 READING, THREE GUINEAS  
 ROTHERWICK (Hants), COACH & HORSES  
 SALISBURY, WYNDHAM ARMS  
 STEVENAGE, RED LION  
 SOUTHAMPTON, WATERLOO ARMS  
 STAFFORD, STAFFORD ARMS  
 STAINES, BEEHIVE  
 STAINES, CAVALIER  
 STAINES, PHOENIX  
 STOW MARIES (Essex), PRINCE OF WALES  
 STRATFIELD SAYE (Hants), NEW INN  
 SUNBURY, FLOWER POT  
 SUNNINGDALE, ROYAL OAK  
 TILLINGHAM (Essex), CAP & FEATHERS  
 WALTON ON THAMES, REGENT  
 WATFORD, WEST HERTS SPORTS CLUB  
 WEST HORSLEY (Surrey), KING WILLIAM IV  
 WEYBRIDGE, PRINCE OF WALES  
 WORCESTER, BREWERY TAP & BREWERY  
 WORTHING, VINE  
 WRAYSURY, PERSEVERANCE

# The Great British Beer Festival



Campaign for  
Real Ale

## OLYMPIA • LONDON

### 6th-10th AUGUST

OVER  
300  
REAL  
ALES

**Tue - Thu eve:** 5-10.30pm £4 **Wed - Thu lunch:** 11.30am-3pm £1  
**Fri:** 11.30am-10.30pm £4.50 **Sat:** 11am-7pm £3.50 Season ticket: £13  
Children Free in family room Last entry 30 mins before closing  
Ring 01727 867201 for further details