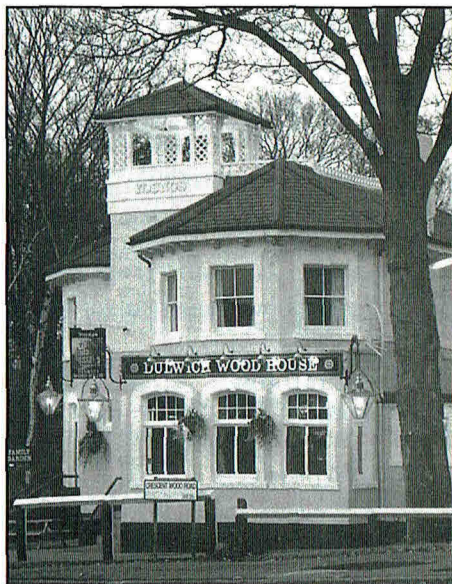


June 96

LONDON CAMRA DRINKER

30p



**The Dulwich Wood House,
Sydenham Hill, London SE26**

Photo by: Mrs. Jo Henderson

Vol 18

Produced by the London branches of the Campaign for Real Ale Ltd

No. 5

WHERE TO BUY LONDON DRINKER

The following is a list of all the current outlets for London Drinker of which the editors have been informed. Full addresses are only given where there are two pubs of the same name in the same postal district.

OUTLETS - EAST AND SOUTH EAST PUBS

EC1 ARTILLERY ARMS
EC1 BISHOPS FINGER
EC1 MASQUE HAUNT
EC1 O'HANLONS
EC1 PHEASANT & FIRKIN
EC1 ROSEBERRY
EC1 SEKFORDE ARMS
EC1 SHAKESPEARE
EC3 SWAN
EC4 BLACK FRIAR
E1 LORD RODNEYS HEAD
E2 CAMDENS HEAD
E3 IMPERIAL CROWN
E5 PRINCE OF WALES
E8 LADY DIANA
E9 FALCON & FIRKIN
E9 ROYAL STANDARD
E11 BIRKBECK TAVERN
E11 GEORGE
E13 VILLAGE
E14 QUEENS HEAD
E15 GOLDEN GROVE
DAGENHAM, LORD DENHAM
SE1 ANCHOR & HOPE
SE1 COPPER
SE1 FOUNDERS ARMS
SE1 GEORGE TAVERN
SE1 GOOSE & FIRKIN
SE1 GRAPES
SE1 HORNIMAN AT HAYS
SE1 KINGS ARMS
SE1 MARKET PORTER
SE1 OLD BRIDGE HOUSE
SE1 PRINCE WILLIAM HENRY
SE1 SHIP, 68 Borough Road
SE1 ST GEORGES TAVERN
SE1 TRINITY ARMS
SE1 WHEATSHEAF
SE1 WHITE HART, Cornwall Street
SE1 WINDMILL, 44 Lambeth High Street
SE3 BRITISH OAK
SE3 HARE & BILLET
SE3 PRINCESS OF WALES
SE5 FOX ON THE HILL
SE5 PHOENIX & FIRKIN
SE6 BLACK HORSE & HARROW
SE6 TIGERS HEAD
SE7 ANTGALLICAN
SE8 CRYSTAL PALACE TAVERN
SE8 DOG & BELL
SE8 OLD MANOR HOUSE
SE8 ROYAL GEORGE
SE9 BANKERS DRAFT
SE10 ADMIRAL HARDY
SE10 ASHBURNHAM ARMS
SE10 RICHARD I
SE13 FOX & FIRKIN
SE13 HOGS HEAD
SE16 BLACKSMITHS ARMS
SE16 MANOR TAVERN
SE16 MOBY DICK
SE18 COOPERS ARMS (Plaisted's)
SE18 EARL OF CHATHAM
SE18 ROSE'S (PRINCE ALBERT)
SE18 VILLAGE BLACKSMITH
SE19 ROYAL ALBERT

SE20 MOON & STARS
SE22 CRYSTAL PALACE TAVERN
SE25 ALLIANCE
SE25 GOAT HOUSE
SE26 DULWICH WOOD HOUSE
ADDISCOMBE, CLARET WINE BAR
BARKING, BARKING DOG
BARKINGSIDE, NEW FAIRLOP OAK
BEXLEY, BLUE ANCHOR
CROYDON, ARKWRIGHTS WHEEL
CROYDON, BUILDERS ARMS
CROYDON, DOG & BULL
CROYDON, FIDDLER & FIRKIN
CROYDON, GEORGE
CROYDON, PRINCESS ROYAL (GLUEPOT)
CROYDON, ROYAL STANDARD
ILFORD, GREAT SPOON OF ILFORD
LOUGHTON, LAST POST
PURLEY, FOXLEY HATCH
SOUTH CROYDON, FIDDLER & FIRKIN
SOUTH CROYDON, RAIL VIEW
WALLINGTON, WHISPERING MOON

CLUBS

SE9 HOWERD CLUB
SE13 LEWISHAM LABOUR CLUB
SE18 PLUMSTEAD RADICAL CLUB

CROYDON, RUSKIN HOUSE

OFF TRADE

E18 Gales Off Licence, 204 High Road, Woodford Green
SE3 Bitter Experience, 129 Lee Road
BROMLEY, Bitter End, 139 Masons Hill

OUTLETS - WEST CENTRAL and NORTH PUBS

WC1 CALTHORPE ARMS
WC1 CITTIE OF YORKE
WC1 OLD MONK
WC1 PAKENHAM ARMS
WC1 PRINCESS LOUISE
WC1 RUGBY TAVERN
WC1 SUN
WC1 THREE CUPS
WC1 UNIVERSITY OF LONDON
WC2 CROWN & ANCHOR
WC2 FULMAR & FIRKIN
WC2 GEORGE IV
WC2 HOGS HEAD
WC2 MARQUESS OF ANGLESEY
WC2 MOON & SIXPENCE
N1 179 UPPER STREET
N1 COMPTON ARMS
N1 EARL OF RADNOR
N1 GEORGE & VULTURE
N1 MALT & HOPS
N1 MARQUESS TAVERN
N1 PRINCE ARTHUR
N1 WENLOCK ARMS
N2 WELCH'S ALE HOUSE
N4 TAP & SPILE
N6 OLD GATE HOUSE

N7 TAPPIT HEN
N8 ELBOW ROOM
N8 RAILWAY TAVERN
N8 TOLL GATE
N9 LAMB
N11 BANKERS DRAFT
N12 TALLY HO
N13 WHOLE HOG
N14 NEW CROWN
N16 EBOR ARMS
N16 ROCHESTER CASTLE
N17 ELBOW ROOM
N17 NEW MOON
N19 DOG
N21 DOG & DUCK
N21 HALF MOON
N21 ORANGE TREE
N22 STARTING GATE
BARNET, MOON UNDER WATER
BARNET, WHITE LION
BARNET, YE OLDE MONKEN HOLT
COCKFOSTERS, TRENT TAVERN
EDGWARE, BLACKING BOTTLE
ENFIELD, FALLOW BUCK
ENFIELD, MOON UNDER WATER
ENFIELD, OLD WHEATSHEAF
NEW BARNET, BUILDERS ARMS
NEW BARNET, LORD KITCHENER
NEW BARNET, RAILWAY BELL.

OUTLETS - NORTH WEST PUBS

NW1 HEAD OF STEAM
NW1 LORD NELSON
NW1 QUINNS
NW1 SPREAD EAGLE
NW2 BEATEN DOCKET
NW3 FLASK TAVERN
NW3 THREE HORSESHOES
NW4 CHEQUERS
NW4 GREYHOUND
NW4 PICKLED NEWT
NW8 PRINCESS ROYAL
NW9 J.J. MOONS
NW9 MOON UNDER WATER
NW9 WHITE LION OF MORTIMER
NW10 COLISEUM
NW10 GRAND JUNCTION ARMS
NW10 OUTSIDE INN
NW11 WHITE SWAN
HAREFIELD, PLOUGH
HARROW, MOON ON THE HILL
HARROW WEALD, SEVEN BALS
HATCH END, MOON & SIXPENCE
KENTON, NEW MOON
NORTH HARROW, J.J. MOONS
RUISLIP, J.J. MOONS
SOUTH HARROW, J.J. MOONS
STANMORE, MALT HOUSE
WEALDSTONE, ROYAL OAK
WEALDSTONE, SARSEN STONE
WEMBLEY, J.J. MOONS

OFF TRADE

N1 Beer Shop, Pitfield Street
NW6 Grog Blossoms, 235 West End Lane

CLUBS

NW4 HENDON SOCIAL CLUB,
Middlesex University Bus, School

Continued on page 39

Today, the quality of cask-conditioned beers leaving many breweries has never been better (how many landlords manage to ruin it in their pubs is another story).

This is certainly true of the weaker beers, of three to four percent ABV. There are a number of factors that have brought this about and it is the new microbreweries that have been best placed to take advantage of these circumstances.

Indeed, the very best of beers come from these new breweries. At this year's Brewing Industry International awards independent breweries practically monopolised the medal awards in the cask-conditioned sector. There are three important factors:

1. The demand from you, the customer. As you know, CAMRA has played a leading part in this. When CAMRA was started cask beer was all but disappearing from our grasp. It was much less effort to produce a consistent product in keg. Keg also helped the generally unprofessional publicans that were the norm from after the war until way into the '70s, very convenient and cost-effective for the big brewers. In the capital only John Young was resisting the trend by providing "real ale" (a term coined by Mr Young himself).
2. Scientific improvement of malt and hops. New and improved varieties have been developed and malting and kilning techniques improved. Today, maltsters have realised that smaller breweries are here to stay and are indeed totally reliant on the very best ingredients to succeed. This is a far cry from the late '70s and early '80s when small brewers had to put up with "bin ends" and what appeared to be "floor sweepings" that were all they could get!

Literally every sack is inspected in a small brewery – not possible in larger breweries with their bulk grain handling systems. Large breweries will generally be content with an average analysis, and their accountants (who are probably gin drinkers!) will be demanding the cheapest supply. Small brewers are in control and are prepared to pay for the best.

3. Improved technology

There is now better and more easily available technology, with consequent better microbiological control. As larger breweries have "rationalised" their operations, much good quality plant of the right size and price has become available to the smaller brewer. Many small breweries have taken advantage of this and designed their own breweries with regard to quality of product, cleanability, ease of use and flexibility. The Hop Back brewery can produce two entirely different brews (of 20

and 50 barrel lengths) simultaneously.

Indeed, I would say that some smaller brewers are more efficient and able to produce more types of beers than many larger breweries that have for decades only brewed a handful of beers. In some cases, tragically, these originate from one stock brew which is watered down. In an attempt to give these products some character a few tricks are employed, like sweetening with priming sugars, colouring with caramel, or the addition of hop oil for aroma – all foul practices to my mind. Brewers caught doing these things should be castigated; although again perhaps they are forced at gun point by the aforementioned gin-swelling accountants.

So what of the future? The bigger breweries have already reacted to the challenge from the microbreweries. Both Whitbread and Carlsberg Tetley have built themselves high-quality, small-scale plants and are producing numerous varieties and styles of beers to appear as "guests" in their own chains of "real ale" houses (and it looks to me that although served straight from the cask some of these have top pressure on – could someone investigate?)

It is interesting to note how fast these large concerns have reacted to the market. They are not about to let the small and regional brewers take a

continued on page 38

Lytton Arms Old Knebworth, Herts

★ **NORTH HERTS PERMANENT
BEER FESTIVAL**

★ **UP TO 15 ALES AVAILABLE EVERY
SESSION**

★ **OVER 1500 REAL ALES IN 8 YEARS**

★ **50 BOTTLED BELGIAN BEERS**

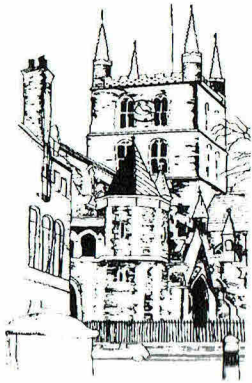
★ **50 MALT WHISKIES**

★ **REGULAR MINI BEER FESTIVALS**

★ **O'KEEFES SAUSAGES & VARIETY
OF CHEESES**

★ **25 MINUTES WALK FROM
KNEBWORTH RAILWAY STATION**

★ **For more info 01438 812312**



BISHOPS BREWERY

CATHEDRAL BITTER (ABV 3.7%)

THIRSTY WILLIE'S BITTER (ABV 3.7%)

MITRE BEST BITTER (ABV 4.2%)

CARDINAL ALE (ABV 4.7%)

- ◆ *APPEARING AT THIS YEAR'S CATFORD BEER FESTIVAL*
- ◆ *SEVEN DAY A WEEK DELIVERY SERVICE*
- ◆ *COMPETITIVE PRICES & DISCOUNTS*
- ◆ *BEER FESTIVALS BIG OR SMALL*
- ◆ *WHOLESALE GUEST BEER SERVICE AT SUPERB PRICES*

SOUTH LONDON OUTLETS:

GEORGE INN, 77 Borough High Street, SE1 (Cathedral)

LORD CLYDE, 27 Clennam Street, SE1 (Cathedral & Cardinal)

MILLER OF MANSFIELD, 96 Snowsfields, SE1 (Cathedral & Willie's)

ST CHRISTOPHERS INN, Borough High Street, SE1 (Thirsty Willie's)

TRINITY ARMS, 7 Trinity Street, SE1 (Cathedral & Cardinal)

WHEATSHEAF, 6 Stoney Street, SE1 (Beers rotate)

People drink it religiously

Telephone or Fax us on 0171 357 8343

IDLE MOMENTS

Hi there folks, it's torment time again! So how are all you masochists out there? Not that I really care, but it's something to say to give the impression that I do. Today, I find myself for once with a few idle moments of my own (because the postman failed to come up with the Beer Guide Updates stuff from Roger) so I have got some real mind benders for you - not that that's any different from most months. Anyway, enough of that; let's kick off as ever with last month's number puzzle answers:

1. 3 Witches in Macbeth
2. 10 Years Between Censuses in Great Britain
3. 1875 Captain Webb Swam the English Channel
4. 24 Grosvenor Square is the American Embassy
5. 2 Bridges over the Course of the University Boat Race
6. 50 Queen Annes Gate is the Address of the Home Office
7. 42 Balls are Left in the Drum after the National Lottery Draw
8. 1 London was the Address of Apsley House
9. 25 Points for Hitting the Outer in a Game of Darts
10. 5 Nickels in a Quarter

And carrying on in the same vein (hoping not to give you the "needle") here are your number puzzles for June (or anyone else you wish to try them on):

1. 16 P in a S in RU
2. 2 CFR are H at N
3. 21 is the MA for a M of P
4. 10 PN have CD on the B
5. 43 CC in E and W
6. 1 P is the P of a T for the NL
7. 55 B is the A of LT
8. 3 of H the ECS on the ET
9. 1690 B of the B
10. 14 is the I of CU in CD

Those of you who have been here before (Some people never learn, do they) will know that at this juncture I usually put in the solutions to last month's brewery anagrams. This month, in order not to cause any more unnecessary suffering than I usually do, I shall also give you the solutions to last month's

brewery anagrams (You know, I'm sometimes amazed that my fellow editors let me get away with all this drivel. It probably means that they have more sense than to read it):

- | | | |
|----|-------------|------------|
| 1. | HER CLINT | CHILTERN |
| 2. | LADY MIM | MILDMAY |
| 3. | SHUNT TREE | THREE TUNS |
| 4. | C.O. OPINED | IND COOPE |
| 5. | LOVE RIB | BELVOIR |

So now, having established the principle, I shall carry on with some more of the same:

1. GET COAT
2. WINTERY GOTH
3. HIP BOSS
4. AH, HAG RUSHES
5. RUM ODE

Still no complaints about the cryptic Underground Stations so I shall carry on with them for a while longer. Here are May's answers:

1. Summon the big woody plant - Becontree
2. The mysterious orient? - Leyton
3. Place of worship - Temple
4. Traps a stream - Snaresbrook
5. The "Ranger" is out of touch - Sloane Square
6. You'll have to take a boat to see the flowers - Island Gardens
7. Dominican monks - Blackfriars
8. Where they cultivate soft white rocks - Chalk Farm
9. Make sure you are well provisioned - Stockwell
10. You mean the Bard lived here? - Stratford

I must come clean here; four of these stations are on the DLR and one is British Rail. They are all on the current underground map though:

1. The girls on the eastbound route are the "County Set"
2. A widely dedicated church
3. Little house from the mountains; any gnomes here?
4. Old queen
5. They cross the river in armour
6. Partitioned island
7. Old queen's husband
8. Little church looks very clean

-
9. The trees in these gardens were diseased
 10. Dirty slippery slope

I've had enough of football grounds for a little while and as I'm not feeling very creative, I've called this month's 5BY4 Alias Again. Those of you who remember Alias, Alias II and Alias III will probably have realised that all you have to do is match the stage names on the left with the artistes' original names in the righthand column. As usual, the solution to this one is given at the end:

- | | |
|---------------------|---------------------|
| 1. Rex Harrison | A. Trevor Stanford |
| 2. Russ Conway | B. Terry Nelhams |
| 3. Ava Gardner | C. Lucy Johnson |
| 4. Marlene Dietrich | D. Doris Kappelhoff |
| 5. Kathryn Grayson | E. Reginald Carey |
| 6. Paulette Goddard | F. Zelma Hedrick |
| 7. Doris Day | G. Maria Von Losch |
| 8. Adam Faith | H. Reginald Dwight |
| 9. Elton John | I. Harold Jenkins |
| 10. Conway Twitty | J. Marion Levy |

Nearly done now; just Trivial Knowledge to come, starting with (You're ahead of me) last month's answers:

1. The Duke of Kent and the Duke of Gloucester
2. Sir John Betjeman
3. It is a match stick split to make a fork for holding a joint (of the funny tobacco variety).
4. Eltham
5. None
6. An MP wishing to resign his seat
7. Al Capone
8. The Isle of Man
9. The orang-utan
10. 4004BC

Just round the corner from me there is one of those pubs that should never have been refurbished (You know what I mean, I think). In a vain attempt to drum up custom it runs a weekly quiz; I know this because each day as I drive to work the blackboard outside annoys me with the words "If you think your brainy enough to win..." There that's got that off my chest, now if your ready, here are this month's questions:

1. Where did the painter Paul Gauguin live and work in the later years of his life?
2. We have all heard of the Severn Bore, but how many rivers altogether in the UK display the same feature?

3. In surface area, what is the largest fresh water lake in Great Britain?
4. How many records has Janis Joplin had listed in the British pop charts?
5. Who is the only British athlete to have taken part in the last four Olympic Games?
6. Who "lives" in the village of St. Mary Mead?
7. In Greek mythology Stheno, Euryale and Medusa were the three Gorgons. In what way was Medusa different from the other two?
8. Still with Medusa, what sprang from her body when Perseus cut off her head?
9. What is the name of the area of west Lancashire between the rivers Ribble and Wyre, chief town Blackpool?
10. What is the common name for hydrated magnesium sulphate?

There that's it for another month; I'll just finish off with the solution to 5BY4:

1-E, 2-A, 3-C, 4-G, 5-F, 6-J, 7-D, 8-B, 9-H, 10-I.

See you in July.

Andy Pirson

FREE BEER & A PUB CRAWL!!

How do you fancy a free pint as a reward for going on a pub crawl one evening? Or a free buffet and a couple of free pints if you manage a whole afternoon of visiting pubs? Sounds like your idea of fun? They why not join us and help publicise the Great British Beer Festival in some of the wonderful pubs in the centre of London?

There are three events arranged:

Thursday 27th June: Join the party at either the Freemasons Arms, Long Acre WC2 at 6.30pm or at 8.15pm at the Chandos, St Martins Lane, WC2; finishing at the Ship, 116 Wardour Street W1 and a free pint.

Saturday 13th July: Start at 11.15am at Star Gazy, Fulham Road, Chelsea. Finish back there at 4pm with a free buffet and free beer courtesy of Fuller's.

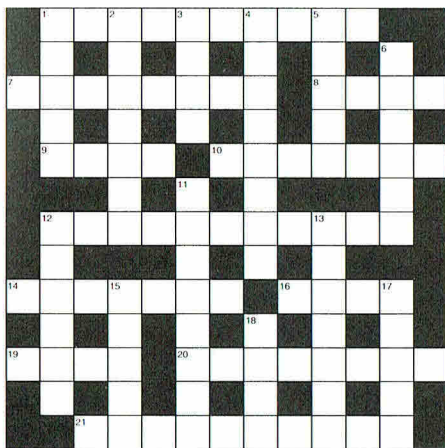
Tuesday 16th July: Join the party at either the Windmill, 6 Mill Street, W1 at 6.30pm or at 8.15pm at the Worcester Arms, 89 George Street W1. Finish at the George & Dragon, 151 Cleveland Street and a free pint.

For further information contact Anne Lodge 0181 889 0513.

LONDON DRINKER CROSSWORD

Guest Compiler BRENDAN CASEY

£10 PRIZE TO BE WON



Name

Address

.....

All correct entries received by first post on 26th June will be entered into a draw for the prize.

Prize winner will be announced in the August London Drinker.

Solution next month.

All entries to be submitted to:

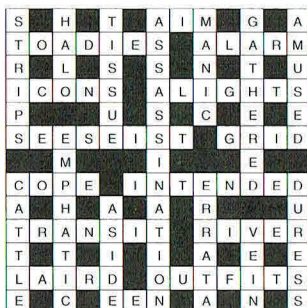
London Drinker Crossword

25 Valens House

Upper Tulse Hill

London SW2 2RX

LAST MONTH'S SOLUTION



ACROSS

1. Town's favourite takes in endless abuse. [10]
7. Means of escape by water back to the earth. [8]
8. 3 may have these ambitions. [4]
9. Evening club. [4]
10. German and Scotsman make this stuff. [7]
12. He has a hungry desire for 10. [11]
14. Carry out fence or break it. [7]
16. Sounds like a cuppa. It's wine though. [4]
19. Endless Hibernian rainbow. [4]
20. The man was in debt we hear it swelled. [8]
21. Fools reportedly intended to make demand. [10]

DOWN

1. The princess is warm in this cloth. [5]
2. It's a link between type of music and drink. [7]
3. Sore injured archer. [4]
4. Faithful follower has to mingle in a way that's off target. [8]
5. Grannie's breads? [5]
6. Tell about PMT on air. [6]
11. Theatre trial. [8]
12. He returned painting with holy word. [6]
13. Horse in fall at the seaside. [7]
15. Group refuge. [5]
17. Ridiculous pint 'e brewed. [5]
18. Deer bites heads off seafood. [4]

Winner of the prize for the April Crossword:
Guy & Alison, West Hendon, NW9.

Other correct entries were received from:

Aaron Aachen, Pat Andrews, Tom Baldwin, John Blundell, Robin Bolt, Alan Brooke, Martyn Brown, A.P.Comaish, I.Cox, Kevin Creighton, Kathryn Everett, Fido, Eileen Graves, Paul Gray, J.E.Green, John Heath, Alec James, Pete Large, Terry Lavell, Colin Mann, J.A.Mason, Terry Neill, Nick & Thellie, Rab Noolas, Mick Norman, John O'Donovan, Nigel Parsons, Steve Piggott, Rod Prince, Super Scooper, A.C.Scutter, Ben & Paul Smith, Old Smokey (in Dorset), Betty Swallows, Tarnya (with child) & Stephen, Bill Thackray, Troglodyte, David Tyrrell, Tony Watkins, Martin Weedon, Spud Whale, Hazel Woodhams, Robert Young.

King & Barnes

FINE SUSSEX ALES



*Available 1st June
for 2 months*



*Available 24 August
for 3 weeks*

*For more information on the Brewery,
the Pubs, the Beers or Guided Tours
please ring or write to:*

KING & BARNES LTD

18 Bishopric, Horsham, West Sussex RH12 1QP

Telephone: 01403 270470

LETTERS TO THE EDITORS

Dear Editors,

It amazes me how little intelligence the beer drinking fraternity are credited with. There are pubs in my local area claiming to be free houses that are clearly not; there are pubs such as the Dover Castle claiming by their facade to be a Young's house – I think not! Then there are the worst culprits of all – pubs claiming to have breweries attached; I refer to the Market Porter, Stoney Street, SE1. Lord knows when it last had a brew on the go but I think it was many years ago. The sign "MARKET BREWERY" remains, as does the pump clip within, claiming to be Market Bitter, which tastes not unlike Courage Best unless my taste buds deceive me.

The Bar Person claimed with great gusto that it was brewed next door, which I suppose would explain the sight of two workmen lounging around on boxes, in a bare and totally unequipped room, drinking cups of styrofoam tea or coffee that afternoon for all the world to see.

If this were not insult enough, the other beers on offer were at best disgusting. I was tipped the wink that the Harveys was always good by another customer, because CAMRA always drink it on their visits, but I have since learned that CAMRA have cleared off to the Fuller's pub, The Ship in Borough High Street – a wise move.

There is, however, a bright note to this sorry tale. I was invited by a friend of mine to the full mash launch at Bishops Brewery – a splendid evening with a fabulous ale range (and totally free); I was invited to look around to my heart's content and drink merrily away in, dare I say it, a real brewery. How novel!

I can only conclude that the Cathedral I drank some months before was not what it claimed to be or was a poor version of what I had come by in the brewery itself.

Why do these people keep digging into our pockets and trying to short change us in terms of quality? Come clean Market Taverns and take the sign down.

Yours sincerely,

Richard Parker, London SE1.

Editor's Comment.

In fairness to the Market Porter, I must mention that the London Liaison Committee

meetings were moved (back) to the Ship owing to problems with booking the upstairs room rather than beer quality. As the man who has to drive there every month to take the spare copies of London Drinker away, I cannot comment on the full range of the Market Porter's beers but the Harveys, as the man said, has usually been pretty good when I have been there. Did they always put a fresh one on for the last Wednesday of the month?

With regard to the improvement in Bishops Cathedral, the recent change to full mash brewing must surely be a contributory factor.

Andy Pirson

Dear Editors,

Let me congratulate Vintage Inns, a Bass subsidiary, on the recent redecoration of the White Horse, Parsons Green, SW6 which is excellent. The atmosphere of the pub is little changed. The bar retaining wall has been pushed back and a bigger service well created with a row of stainless steel taps for dispensing of wine.

It was the discerning approach to wine by Sally Cruikshank that caught the eye of the Evening Standard Wine Pub of the Year Award panel. Sally kept the Highgate Brewery open by campaigning for the recognition of Highgate Mild and by placing a steady stream of orders for barrels.

There is a good range of cask conditioned ales, a notable addition being the launch in 1995 of the Freedom Brewery product range, the brewery being in the coach works adjacent to Parsons Green Lane. On Saturdays Freedom is open for brewery tours by members of the big hearted British public and the many overseas visitors who frequent the White Horse.

Yours sincerely,

Stephen Fothergill,

London SW6.

Editor's Comment:

I think you are going a bit far in implying that the White Horse kept Highgate going on its own. There is a lot of mild drunk in the West Midlands – and it is quite a big brewery.

Andy Pirson

LETTERS TO THE EDITORS (continued)

Dear Editors,

Andy Pirson invites comments on his views about the spread of pub chains (May LD) and their impact on other pubs, particularly locals. My position on pub chains can be summed up by unconditional but critical support. Let me explain.

There are around the country, and, yes, even in London, lots of excellent pubs, sometimes genuinely free houses, sometimes part of a wider post-MMC arrangement. There are also even more absolutely dreadful pubs. Although CAMRA has long had a policy of opposing the closure of all pubs – fine as a theoretical position – we need to think again about what this means in practice in 1996.

Tim Martin is on record (Independent on Sunday, 28th April) as saying that his original motivation for starting Wetherspoons in Haringey was because his local pubs were so awful. By and large they still are. There are many criticisms one could make of Wetherspoons, but the reality is that they have set a standard which many other pubs fall beneath. They have done that by making at

least a few nods to the idea that pubs should be run the way customers would like, not the way the brewery, the landlord or a tightly knit group of regulars would prefer.

In many parts of London – this is arguably less true in at least some areas outside – the idea of a community or genuinely local pub is on the decline. Again this is not necessarily a bad thing. After all, did that old local actually welcome black people, women, gays, men with beards etc? Often it did not.

Finally, as I am sure will be obvious from the above, I am not offering any solutions or prescriptions here. We don't want to lose pubs, we don't want dreadful pubs which no CAMRA member would be seen dead in, but neither do we want the pub chains to be able to wreck the many really good pubs because they have bigger financial muscle behind them. Plenty of scope for campaigning here then. Scope too perhaps for asking what New Labour plans to do in the way of applying the idea of a stakeholder society to pubs and beer?

Yours sincerely,

Keith Flett, Tottenham.

IN 200 YEARS WE'VE NEVER SOLD OUT.

Since 1799 the name Greene King has been synonymous with fine ales. Over all those years, we've fiercely defended our independence and our brewing traditions. It means we've been able to consistently produce some of the finest ales in the country. We haven't sold out. But our beers often do.



LETTERS TO THE EDITORS (continued)

Dear Editors,

Andy Pirson's perceptive editorial (May issue) on the proliferation of new build pubs in suburban centres has hit the nail on the head. Theme bar and 'superpub' developments in town centres, which cater primarily for younger drinkers, are having the twin effects of reducing choice and changing the character of the local area permanently.

If you need evidence of this, just look around central Kingston on Friday and Saturday nights, where pubs such as the Financier & Firkin and the Baron's Puzzle (the latter being built as a 'feeder' to the disco next door) have an exclusively teenage clientele. I hear this has also resulted in increased activity by the boys in blue. On my last visit to the Firkin – on a Sunday afternoon – I noticed a large piece of plywood covering one window! We also have been treated to the delights of two "Oirish" conversions (O'Neill's, Shamus O'Donnells) in the past year, which has aroused controversy in the local press, especially Bass's sensitive renaming of the Apple Market Inn to the first-named above. Pub operators are clearly 'responding to local need' by soaking up the potential custom of an expanded local youth and student population. The same cannot be said of Sutton which, given the concentration of new pubs around the station, appears to be targeting the thirsty commuter, probably to the detriment of other locals.

I am not arguing against a choice of venues for its own sake (If enough people want to drink fizz out of a bottle, that's up to them) – it's just the fact several pub groups, most armed with millions of pounds of shareholders' funds to spend, seem to be competing against each other for one segment of the trade. What price the market in former theme-pub property in five years time? Brewers and independent pub operators alike may be shooting themselves in the foot, but in the process they are hastening the demise of many good locals, as you rightly point out. Some chains, notably Wetherspoon (in particular) and Whitbread's Hogshead ale houses (to a lesser extent for their pricing

policy) deserve honourable mention for trying to offer something genuinely different, although some might say that Hogsheads are cynically targeting CAMRA members – are we the new 'niche' market?

Isn't it time CAMRA woke up to the fact that the real threat to real ale choice comes not from brewery takeovers and closures (which, despite the National Executive's protestations to the contrary, we have been singularly unsuccessful in halting) but from the evil designs of retail brand managers. The relaxation of planning controls in 1988 (under the "Use Classes Order" which eased the conversion of shops etc. into licensed premises), then the wholesale changes in ownership and control of pubs after the MMC Report have shifted the balance of power over what we drink, and where we drink it, to the pub operator. Retailer 'ties' within independent chains (witness the continuous whining in CAMRA letters pages about seemingly ever present Scottish-Courage beers) are the manifestation of this. For some time now, I have tried to alert CAMRA members locally and at regional level to the threat, but to little avail. However, I was glad to see that my draft motion to fight new 'theme' developments within town centres aimed at the alcopop/nitrokeg market, submitted at branch level, was echoed (albeit in 'watered down' form) by the Pub Group's submission to the AGM recently. This has now been adopted (Item 3.10) as national policy, so let's see more of CAMRA's resources devoted to fighting the urban 'ghost town' through opposing new planning applications at local level.

Get organised and do it to them before they do it to your local!

Yours sincerely,

Brian Bade, Kingston.

ps. Readers may be interested to know that in addition to the listed new pubs, a Litten Tree (Surrey Free Inns) has now opened in Kingston and we are soon to get a Wetherspoons as well (less than a quarter of a mile away!)

The Firkin in Richmond is in fact the Flicker & Firkin (not as printed in the May edition). Sorry – Ed.

Here comes the summer



a Quality BOTTLE-CONDITIONED ale from the
**WINNERS of over 50 Camra
Beer festival awards.**

available at ODDBINS and Hopback Brewery PUBS

HOP BACK BREWERY - 01725 510986



BRANCH DIARY

If your branch is not mentioned below, please ring the branch contact. Dates for June of which we have been notified are given below. Branches please send information to Andy Pirson. Branch contacts page 23.

ALL LONDON: Thu 27 Great British Beer Festival Publicity Evening. Join the party at either the FREEMASONS ARMS, Long Acre, WC2 at 6.30pm or at 8.15 at the CHANDOS, St. Martins Lane; finishing at the SHIP, Wardour Street, W1 and a free pint - Sat 13 July Great British Beer Festival Publicity Day. Start at 11.15am at the STARGAZEY, Fulham Road, Chelsea; finish back there at 4.00pm with a free buffet and free pint courtesy of Fullers - Tue 16 July Great British Beer Festival Publicity Evening. Join the party at either the WINDMILL, 6 Mill Street, W1 at 6.30pm or at 8.15 at the WORCESTER ARMS, 89 George Street, W1; finishing at the GEORGE & DRAGON, 151 Cleveland Street and a free pint. For further information on any of these events contact Anne Lodge on 0181-889 0513.

CROYDON & SUTTON: Sat 1 (10.00am) Out of Town Pub Ramble. Ring Branch Contact for Details. New faces welcome - Mon 3 (8.00) Shirley Crawl. Meet CROWN INN, 28 Wickham Road (depart 9.30) then SANDROCK, 152 Upper Shirley Road - Mon 10 (8.00) SE25 Crawl. Meet PICKLED NEWT, 65 Harrington Road then GLADSTONE; PRINCE OF DENMARK and PORTMANOR - Thu 20 (8.00) Quiz Master's Social. ACADEMY, Cheam Road, Sutton - Thu 27 (8.30) Branch Meeting. DOG & BULL, 24 Surrey Street, Croydon.

EAST LONDON & CITY: Tue 4 (8.00) Branch Meeting. ARTILLERY ARMS, Bunhill Row, EC1 - Thu 13 (8.00) Two Pub Social. BELL, 468 Leytonstone High Road, E11 then BIRKBECK TAVERN (9.00), Langthorne Road, E11 - Wed 19 (6.00) Social. O'HANLONS, Tysoe Street, EC1 - Mon 24 (6.00) Two Pub Social. 49 GRESHAM STREET, EC2 then RED LION, Watling Street, EC2 - Tue 2 July (8.00) Branch Meeting. Venue to be advised. An updated list of East London & City Branch events is maintained on the Internet at: <http://www.scism.sbu.ac.uk/~polovina/elac/>

ENFIELD & BARNET: Sat-Sun 1 & 2 Branch visit to Batemans Brewery, Wainfleet. £25 for visit and accommodation; £17 coach fare. £10 cheque deposit to Tony Roberts - Tue 4 (9.00) Social. WINCHMORE ARMS (formerly Chase Side Tavern), Winchmore Hill Road, N21 (bus 125) - Wed 12 (8.30) BRANCH ANNUAL GENERAL MEETING. BULL & BUTCHER, 1277 High Road, Whetstone. Guest speaker invited -Thu 20 (9.00) Social. ROYAL OAK, 1117 Finchley Road, NW11 - Thu 27 (9.00) Social & London Drinker Pickup. BLACK HORSE, Wood Street, Barnet.

KINGSTON & LEATHERHEAD: Thu 6 (8.30) Business Meeting. BEAR, High Street, Esher - Tue 11 (8.00) Surrey Beer Festival Publicity Crawl of Epsom. Start KINGS ARMS, 144 East Street - Sun 16 (12.30) Lunchtime Social & Good Beer Guide Presentation. PRINCE OF WALES, Cross Road, Otlands - Sat 22 (7.30) Branch Barbecue. WYCH ELM, Elm Road, Kingston (details to be confirmed - phone Branch Contact) - Wed 10 July (8.30) Business Meeting and New Member Welcome Night. BREWERY INN, The Street, Ashted - Sat 13 July (8.00) Branch 21st Birthday Social. TWO BREWERS, Wood Street, Kingston. All members and ex-Committee cordially invited to attend.

RICHMOND & HOUNSLOW: Tue 4 (8.00) Committee Meeting followed at 9.00 by Open Branch Meeting. COACH & HORSES, Kew Green, Kew, Richmond - Thu 13 (8.00) Twickenham Crawl. Start at EEL PIE, Church Street, then including OLD ANCHOR (9.45).

SOUTH EAST LONDON: Thu 30 May (7.30) Catford Beer Festival Publicity Crawl of Waterloo. Start ST GEORGES TAVERN, 44 Lambeth Road, SE1; finish WELLINGTON TAVERN, 81 Waterloo Road (approx 10.15) with a free drink from the festival organiser - Mon 3 (6.30) Festival Set-Up Buffet followed by Committee Meeting. CATFORD RAM, 9 Winslade Way, SE6. Free food for all set-up workers - Wed 5 to Sat 8 4TH CATFORD BEER FESTIVAL. See festivals column for details - Sun 9 (1.00pm) Festival Take-Down Party. CRYSTAL PALACE TAVERN, 105 Tanners Hill, SE8. Badges for free food and beer will be issued at Lewisham Theatre from 9.00am -Tue 11 (8.00) Branch Meeting. PRINCE WILLIAM HENRY, 217 Blackfriars Road, SE1. *New faces always welcome* - Wed 19 (8.00) Two Pub Social. MANSION HOUSE, 46 Kennington Park Road, SE11 then GREYHOUND (9.30), 336 Kennington Park Road - Sun 30 (1.00) Social. DULWICH WOOD HOUSE, 39 Sydenham Hill, SE26. Petanque piste availability, weather and crowds permitting!

SOUTH WEST ESSEX: Wed 5 (8.30) Social. OLDE DOG INN, Billericay Road (off A128),

Herongate - Mon 10 to Sat 15 **THURROCK BEER FESTIVAL**. Civic Hall, Blackshots Lane, Grays. Opens Mon 6.00-11.00; Tue-Fri 12.00-3.00 & 6.00-11.00; Sat 12.00-4.00 & 6.00-11.00 - Tue 11 (10.00 at brewery) Brewery Trip to McMullens, Hertford. Includes visit to the "Beer Keeper". Details/bookings from Wendy Benson on 01708-723897 - Wed 19 (8.30) Social. **BELL**, High Road, Horndon on the Hill - Tue 25 (8.30) Social. **CRICKETERS**, 299-301 High Road (A11), Woodford Green - Sat 20 July (11.30 at brewery) Brewery Trip to Bunces, Netheravon. Details/bookings from Wendy Benson on 01708-723897

SOUTH WEST LONDON: Tue 4 (7.30) Crawl of Mitcham. Meet **WHITE LION OF MORTIMER**, 223 London Road. Includes **KINGS ARMS**, **WINDMILL**, **CRICKETERS**; finish **QUEENS HEAD** (10.00), Cricket Green - Sun 9 Cricket Vs Wargrave (away) - Wed 12 (6.00) Cricket Vs **PRINCE OF WALES**, 98 Morden Road, SW19. Meet at pub; match at Abbey Rec -Sun 16 (1.30) Cricket Vs Steve's XI. Nursery Road, off Morden Road, SW19 - Mon 17 (8.00) Open Branch Committee and Open Festival Committee Meetings. **CROWN & SCEPTRE**, 2 Streatham Hill, SW2 - Sun 23 (2.00) Cricket Vs Priory Arms. Battersea Park -Sun 30 Cricket Vs West Peckham. Abbey Rec, Morden Road, SW19. Cricket players please ring Andy Robinson on 0171-410 6302 (work) or 0181-653 8885 (home).

WATFORD & DISTRICT: Sun 2 (8.00) Committee Meeting. **WEST HERTS SPORTS CLUB** - Wed 5 (8.30) Sarratt Social. **BOOT** then **CRICKETERS** (9.30) - Mon 10 (8.30) Joint Social with West Middlesex Branch. **MALTHOUSE**, Stanmore Hill, Stanmore - Tue 11 (8.30) Bushey Heath Social. **ROYAL OAK** then **BLACK BOY** (9.30) - Tue 18 (7.30) Kings Langley Social. **BELL** then **SARACENS HEAD** (8.30); **SWAN** (9.30) -Fri 21 London Pub Crawl - Chelsea area (see article) - Wed 26 (8.30) Good Beer Guide Social & Skittles. **KINGS HEAD**, Hunton Bridge.

WEST LONDON: Thu 6 (8.00) Branch Meeting. **BRITANNIA TAP**, 150 Warwick Road, W14 - Fri 21 (8.30) Social. **WORCESTER ARMS**, 89 George Street, W1 - Tue 2 July (8.30) Garden Social. **SALUTATION**, 154 King Street, W6.

WEST MIDDLESEX: Mon 3 (7.30) Beer on Broadway Debrief Meeting. **ROSE & CROWN**, Church Place, Ealing, W5 - Thu 6 (8.00) Uxbridge Pub Crawl. Start **OLD BILL**, Windsor Street; **QUEENS HEAD** (8.30); **THREE TUNS** (9.00); **GOOD YARN** (9.30); **CROWN & TREATY** (10.00) -Mon 10 (8.30) Joint Social with Watford & District Branch. **MALTHOUSE**, Stanmore Hill, Stanmore - Wed 19 (8.30) Branch Meeting. **DRAYTON COURT**, 2 The Avenue, West Ealing, W13 - Wed 26 (9.00) London Drinker Pickup. **RED LION**, St. Marys Road, Ealing, W5

Deadline for the July edition, 1st June. Material for August to arrive by 1st July. Please be sure to send all diary material to Andy Pirson.

WHITBREAD INNS INVESTS £12M AS SALES OF REAL ALE SOAR

Whitbread Inns is investing £12 million to open 20 new Hogsheads – pubs which specialise in cask ale – during the year.

The announcement follows the news that cask ale sales have risen by a massive 14 per cent in the 75-strong Hogsheads – defying industry trends which show a volume decline of 7.8 per cent across the on-trade.

Hogsheads ale houses offer a choice of more than 200 different real ales during the year, many of them at special beer festivals, with a minimum of eight always available.

To encourage people to try the different beers on offer, small sampling glasses will be available in all Hogsheads, giving customers the opportunity to try a beer before they buy it.

Kevin Price, Trade Director for Whitbread Inns, "Real ale needs expert handling. We believe that's why Hogsheads have bucked

the trends. Staff receive comprehensive training on the handling and range of cask beers and can advise the customer about what is on offer.

"The ale revolution is akin to the days when we first started to drink wine but limited ourselves to choosing just one or two household names. Now visit any high street supermarket and you can see the vast array they have on offer. The same is happening with beer. There's a whole complex world of beers, lagers and ciders to be discovered."

As well as a range of cask beer, Hogsheads also offer:-

- cask conditioned cider.
- a range of Belgian beers with matching speciality glasses, including Hoegaarden White Beer on draught.
- 12 quality wines by the glass

FORTHCOMING FESTIVALS

5-8 June	Catford Lewisham Theatre Rushey Green SE6
10-15 June	Thurrock Thurrock Civic Centre Blackshots Lane, Grays
14-15 June	Bury St Edmunds Corn Exchange Bury St Edmunds
21-22 June	Sittingbourne Kemsley Down Station
28-29 June	Surrey Leatherhead Leisure Centre Guildford Road Leatherhead (Note new venue – previously Dorking)
4-6 July	4th Leighton Buzzard Black Lion Leighton Buzzard
5-6 July	Southdowns Lewes Town Hall
12-14 July	Woodcote Rally Beer Tent Copyhold Farm Whitchurch Hill
12-14 July	Horsham Histories Beer Tent Sussex County Showground Ardingley
16-20 July	2nd All Essex Brew Ha Ha Student Union Bar & Gym Anglia Polytechnic University Park Road, Chelmsford
18-20 July	Kent The Cowshed, Merton Farm Merton Lane, Canterbury
25-28 July	Cotswold Postlip Hall Tithe Barn Nr Winchcombe
6-10 Aug	Great British Beer Festival Grand Hall, Olympia, W8
16-17 Aug	Pompey Beerex Guildhall, Portsmouth
19-21 Sept	North Herts Plinston Hall Letchworth

Steve and Charlie
*extend a warm
welcome to all fellow
CAMRA members and
lovers of a good pint*

MAGPIE & CROWN

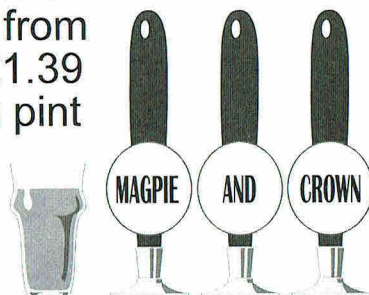
128 High Street
Brentford

0181 560 5658

- * Traditional Cider
- * Draught Czech Budvar
- * Draught Hofbräu
- * Bed & Breakfast
- * Open all permitted hours

Ever changing guest
beers from micro
and small regional
breweries

- from
£1.39
a pint



* singing voice required Friday evenings

Announcing the opening of the...

FANFARE & FIRKIN

OPENS 14TH MAY
AT 12 NOON

LOOK!

38 GREAT MARLBOROUGH
STREET, LONDON

(NEAR TO OXFORD CIRCUS TUBE STATION)



All Firkin beers are brewed using only the finest quality English Marris Otter Malt and choicest Hertfordshire Fuggles Hops, no sugar or other ingredients are used, apart from yeast of course.

THE FIRKIN BREWERY™



BIERES SANS FRONTIERS

Foreign Beer at the Great British Beer Festival

Foreign Beer at the Great British Beer Festival has grown from offering a selection of 'newly discovered' trappist and lambic fruit beers to selling a large range of many different beers and styles from a variety of countries, truly Bieres sans Frontieres.

Last year for the first time three bars were used, splitting the beers geographically and roughly according to beer style. This proved a great success enabling both customers and staff to find the beers much more quickly and efficiently. Not surprisingly we will keep the same formula this year.

The Belgium and Netherlands Bar was the initial mainstay for Foreign Beer and provides an amazing diversity of choice.

Lambic beers are unique to Belgium and when traditionally produced are as complex a beer as anyone could wish for. The best are dry and occasionally one is so dry that even lambic hardened veterans take them with a lump or two of sugar. Such was the case with Drei Fonteynen Frambozen, a beer that had been out of production but which we now hope to bring back this year. Other lambic will include Cantillon, the famous Brussels based brewers and blenders.

One feature the bar has been aiming at is to increase the numbers of beers from small and artisanal brewers. Beers from the likes of Achouffe and IJ, the Amsterdam brewery (means egg by the way), have appeared already, but will be strongly represented. But this year look out for brews from Halve Maan, Schelder and Ellezeloise among others with their different tastes including spices and honey, and not forgetting a trip into France for Au Baron.

Lovers of trappist beers will not be disappointed with the usual wide selection and old favourites like Duvel and De Knoninck are not forgotten. But the bar is trying more than ever to present the smaller and newer breweries with an added feature that many will be available on draught.

Beers from Germany and the Czech Republic form the second bar with very many of their beers using bottom fermentation and long weeks of conditioning.

Many of the German beers are Bavarian reflecting the long tradition and quality of brewers in that region, beers like the monastic Andechs Dunkel and festive St. Georgen Annafestbier, not to mention the unique and immensely tasty rauchbiers from Bamberg. The refreshing wheat beers will be well represented

and to complete the picture there will be several different Alt and Kilsch beers, the hoppy, top fermented beers from further north.

We are fortunate to be able to have so many of the beers from small German producers on draught. The special 20 or 30 litre barrels are filled at the brewery and brought direct to London, thus when on sale they are as fresh as we can possibly make them.

The Czech Republic is famous for its blond pilsner beers, but there are many other different types and small brewers that need investigating. Beers like Radegast Porter, Nachod Primator Tmavy Lezak, a fine dark beer but try asking for that on the Friday night, and Lobkowicz Furst, an excellent dark malty beer, have been pencilled in. However, it is evident that we need more information. Thus dedicated BSF volunteers are heading for the environs of Prague to punish themselves sampling some of the lesser known brands before deciding the final order. Judge whether it was worthwhile!

The American and Rest of the World bar is the third and last bar and could in principle cover all other beer styles given the depth of the micro brewery revolution in the USA.

One feature is the increasing number of draught cask conditioned beers being produced in the States, this will be reflected in the beers available at the festival. Most of these draught beers will be Imperial Stouts or India Pale Ales, strong and hoppy as they were originally meant to be, beers designed for long distance travel, something they will surely do. But of particular note though are Mendicine Eye of the Hawk, a beautiful barley wine and Celis White, compare this to its European cousins.

Our man in the States is still scouring the land for the best examples of bottled beers for the various styles. And not just the States, we hope to have a stout from Trinidad to go with the Jamaican Dragon Stout and hopes are high that this is the year that Xingu Back Beer from Brazil finally makes it over. Better watch this space.

This is just a taster for what will be on sale at the Bieres sans Frontieres, in total there will be something like 150 different beers to try. There should be something to suit everyone's palate, take the trouble to find it. But if you know of interesting beers don't hesitate to let us know and in particular how we might bring them over in future years.

Prosit!

GFB RULES THE WORLD!

GFB Bitter took the top prize at last month's Brewing Industry International awards held in Harrogate.

The ordinary strength bitter won not only gold medal in its class but also carried off the cup for overall Champion cask-conditioned beer. The result was yet another feather in the cap for its brewer, Hop Back Brewery of Salisbury.



John Gilbert (left) and head brewer Rik Lyall show off the cup and gold medals that were their haul at the recent BII awards.

And it also showed that when it comes to quality, small brewers can beat the big guns of the industry. GFB was in competition with 850 brews from 24 countries from four continents.

A delighted Hop Back MD John Gilbert told London Drinker: "Everybody at the brewery is really bouyed up by this. Let's make no mistake about it, this title of Champion cask beer was the one every British brewery was most keen to win."

Though the win will prove mightily important for the brewery, it is also of great importance to the ordinary drinker of real ales.

Firstly it proves to a wider audience that micro brewers really have come of age – and can do the business when put up against the brewing giants. This win will help the spread of micro brewers' beer and that can only mean more choice and better quality guest beers.

Secondly, GFB's winning is a victory for good taste – and distinct beer. GFB is so flavoursome that it is not everybody's cup of tea. The sort of drinker who lists the soft character of the likes of Tetley Bitter or Boddington's (and is likely at any minute to switch to a nitrokeg) would likely be "phased" by GFB. It is heartening to see a quality, distinct product carry off an accolade.

Thirdly, at just 3.5% ABV, GFB's winning is remarkable. Indeed there were only 12 brews weaker than this at the BII awards. This win shows that quality and distinction can owe little to strength. Again, we hope licensees choosing guest beers will take notice. There is a big demand out there for quality "session" beers as guest brews. Let's hope this result will encourage such publicans to meet it.

Lastly, I see something very honest and refreshing about Hop Back's win.

Despite its reaching dizzy heights Hop Back is still a small brewery, building business on top quality ales at good value for money. And though it is a young firm and driven by a youthful spirit, the very best of traditions are respected.

Danny Blyth

NEWS FROM YOUNGS

The tables were turned when veteran waiter Juan Castellvi retired from the restaurant of a Young's pub in Surrey.

Brewery chairman John Young and managing director Patrick Read donned red waistcoats and bow ties to serve Barcelona-born Juan with a farewell Champagne lunch.

Juan said goodbye to customers and staff after 18 years at the Chequers in Walton-on-the-Hill.

He came to Britain in 1961 – "to polish up my English for a few months" – but stayed for 35 years, working in hotels and restaurants in Colchester, Woking and Reigate before moving to the Chequers.

Juan, who lives in Fir Tree Road, Epsom Downs, is planning to play golf and visit Spain during his retirement.



Young's Brewery managing director Patrick Read (left) pours champagne for Juan Castellvi while chairman John Young dishes up a trifle made by Juan himself.



Since the last Wetherspoon News, the company has opened 13 new pubs throughout the country.

An array of former buildings, including supermarkets, cinemas and shops have reopened as Wetherspoon outlets.

At present (April 1996) building teams are on site at 10 new pubs and a further eight will be on site in the coming weeks and months.

Of the 13 new pubs, three have opened in April, just before the magazine went to press.

They are Wetherspools in Portsmouth, The Rhinoceros in Rotherham and The Troll Cart in Great Yarmouth (Full addresses are listed in the 'Now Open' section on the next page).

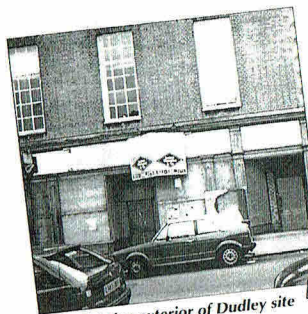
Below is a list of forthcoming openings – The opening dates, in brackets, are only a guide and are subject to change.

ON SITE – APRIL 1996

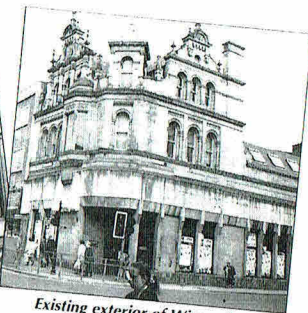
- The Cross Keys – 2 Chequer Street, St Albans, Hertfordshire (April 25)
- The Last Plantagenet – 107 Granby Street, Leicester (April 25)
- The College Arms – 40 The Broadway, Peterborough (May 16)
- The Bankers Draft – 1-3 Market Place, Sheffield (June 16)
- The Figure of Eight – Broad Street, Birmingham (June 20)
- The Ash Tree – Main Street, Wellington Road, Ashton-Under-Lyme. (June 27)
- The Benjamin Satchwell – 112-114 The Parade, Leamington Spa (July 11)
- The Grey Friar – 144, Friargate, Preston (July 18)
- The Standing Order – 20 High Street, Southampton (July 25)
- Unnamed – The Parade – Market Place, Northampton (July 25)

ON SITE – (MAY 1996 ONWARDS)

- Unnamed – 15 Meadow Street, Weston-Super-Mare (August 14)
- Unnamed – 58-60 High Street, Dudley (August 15)
- Unnamed – 17 London Road, Redhill (August 15)
- Unnamed – The Wiend, Market Place, Wigan (September 12)
- Unnamed – 85-87 Westborough, Scarborough (September 20)
- The Picture House – Bridge Street, Stafford (October 16)
- Unnamed – 2-8 High Street Staines (October 17)
- Unnamed (The former Marquee Club) – 105 Charing Cross Road, London WC2 (November 17)



Existing exterior of Dudley site



Existing exterior of Wigan site

your WETHERSPOON PUB GUIDE

BARKING AND DAGENHAM

THE BARKING DOG
61 Station Parade, Barking

THE LORD DENMAN
270-272 Heathway, Dagenham

BARNET

THE MOON UNDER WATER
148 High Street, Barnet

THE WHITE LION OF MORTIMER
3 York Parade, West Hendon
Broadway NW9

THE RAILWAY BELL
13 East Barnet Road, New Barnet

THE MOON UNDER WATER
10 Varley Parade, Colindale NW9

***THE TALLY HO**
749 High Road, North Finchley N12

THE BLACKING BOTTLE
122-126 High Street, Edgware

BEXLEY

THE WRONG 'UN
234-236 The Broadway, Bexleyheath

BRENT

JJ MOON'S
553 Kingsbury Road, Kingsbury NW9

THE OUTSIDE INN
312-314 Neasden Lane, Neasden
NW10

JJ MOON'S
397 High Road, Wembley

THE COLISEUM
Manor Park Road, Harlesden NW10

BROMLEY

THE MOON AND STARS
164-166 High Street, Penge SE20

THE HARVEST MOON
141-143 High Street, Orpington

THE SOVEREIGN OF THE SEAS
109-111 Queensway, Petts Wood

CAMDEN

THE MAN IN THE MOON
40-42 Chalk Farm Road, Camden
NW1

THE BEATEN DOCKET
50-56 Cricklewood Broadway,
Cricklewood NW2

THE THREE HORSESHOES
28 Heath Street, Hampstead NW3

CITY OF LONDON

HAMILTON HALL
Liverpool Street Station EC2

CROYDON

THE GEORGE
17-21 George Street, Croydon

THE MOON UNDER WATER
13-27 London Road, Norbury SW16

THE FOXLEY HATCH
8-9 Russell Hill Parade,
Russell Hill Road, Purley

EALING

THE RED LION AND PINEAPPLE
281 High Street, Acton W3

ENFIELD

THE MOON UNDER WATER
115-117 Chase Side, Enfield

THE WHOLE HOG
430-434 Green Lanes, Palmers Green
N13

THE HALF MOON
749 Green Lanes, Winchmore Hill
N21

THE BANKER'S DRAFT
36-38 Friern Barnet Road,
New Southgate N11

THE LAMB
52-54 Church Street, Edmonton N9

EEPING FOREST

THE LAST POST
2-27 High Road, Loughton

GREENWICH

THE BANKER'S DRAFT
80 High Street, Ilham SE9

HACKNEY

THE ROCHESTER CASTLE
145 High Street, Stoke Newington
N16

HAMMERSMITH

THE MOON ON THE GREEN
172-174 Uxbridge Road,
Shepherds Bush W12

HARINGEY

THE OLD SUFFOLK PUNCH
10-12 Grand Parade, Green Lanes,
Haringey N4

THE NEW MOON
413 Lordship Lane, Tottenham N17

THE ELBOW ROOM
503-505 High Road, Tottenham N17

THE TOLL GATE
26-30 Lumpike Lane, Hornsey N8

THE ELBOW ROOM
22 Topshield Parade, Tottenham Lane,
Crouch End N8

THE GATE HOUSE
1 North Hill, Highgate N6

HARROW

JJ MOON'S
3 Shaftesbury Parade,
Shaftesbury Circle, South Harrow

THE MOON ON THE HILL
373-375 Station Road, Harrow

NOW

- The College Arms, 40
- The Coronet, 338-346
- The Hatters Inn, 2-10
- The Imperial, N
- The New Crown, 80
- The Postal Order, 15
- The Potter's Wheel,
- The Regal, King
- The Rhinoceros, 35-
- The Savoy, 38-40
- The Troll Cart, 7-9 Ro
- Wetherspoons, 2 G
- The Wolf, 88-89 St Jo

THE NEW MOON
25-26 Kenton Park Parade,
Kenton Road, Harrow

THE MOON AND SIXPENCE
250 Uxbridge Road, Pinner

THE SARSEN STONE
32 High Street, Wealdstone

JJ MOON'S
20 The Broadwalk, Pinner Road,
North Harrow

THE VILLAGE INN
402-408 Rayners Lane, Pinner

THE MAN IN THE MOON
1 Buckingham Parade, Stanmore

HAVERING

JJ MOON'S
46-62 High Street, Hornchurch

your WETHERSPOON PUB GUIDE

THE MOON AND STARS

99-103 South Street, Romford

HERTFORDSHIRE

THE HART AND SPOOL

148 Shenley Road, Borehamwood

THE MOON UNDER WATER

44, High Street, Watford

HILLINGDON

JJ MOON'S

12 Victoria Road, Ruislip Manor

THE MOON UNDER WATER

10-11 Broadway Parade,
Coldharbour Lane, Hayes

OPEN

The Broadway, Peterborough

Holloway Road, London N7

Queensway, Bognor Regis

ew North Road, Exeter

34 Chase Side, Southgate

6 Durwen Street, Blackburn

6 The Kingsway, Swansea

5 Square, Gloucester

2 Bridgegate, Rotherham

Regent Street, Swindon

Regent Road, Great Yarmouth

Edhall Walk, Portsmouth

ohn Street, Bury St Edmunds

JJ MOON'S

Terminal Four, (Airside),
Heathrow Airport, Hounslow

WETHERSPOONS

Terminal Four, (Landside),
Heathrow Airport, Hounslow

THE MOON AND SIXPENCE

1250-1256 Uxbridge Road,
Hayes End

THE SYLVAN MOON

27 Green Lane, Northwood

THE GOOD YARN

132 High Street, Uxbridge

HOUNSLOW

THE MOON UNDER WATER

84-86 Staines Road, Hounslow

JJ MOON'S

30-32 Chiswick High Road, Chiswick W4

THE MOON ON THE SQUARE

Unit 30, The Centre, Feltham

ISLINGTON

THE DOG

17-19 Archway Road, Archway N19

179 UPPER STREET

179 Upper Street, Islington N1

THE WHITE LION OF MORTIMER

125-127 Stroud Green Road,
Stroud Green N4

THE MASQUE HAUNT

168-172 Old Street EC2

KENT

THE PAPER MOON

55 High Street, Dartford

LAMBETH

THE CROWN AND SCEPTRE

2a Streatham Hill SW2

THE BEEHIVE

407-409 Brixton Road, Brixton SW9

LEWISHAM

THE TIGER'S HEAD

350 Bromley Road, Catford SE6

THE BIRD IN HAND

35 Dartmouth Road, Forest Hill SE23

MERTON

THE WHITE LION OF MORTIMER

223 London Road, Mitcham

WETHERSPOONS

33 Aberconway Road, Morden

THE WIBBAS DOWN INN

6-12 Gladstone Road, Wimbledon

NEWHAM

THE MILLER'S WELL

419-421 Barking Road, East Ham E6

THE GOLDENGROVE

146-148 The Grove, Stratford E15

REDBRIDGE

THE NEW FAIRLOP OAK

Fencepiece Road, Barkingside

THE GEORGE

High Street, Wanstead E11

THE GREAT SPOON OF ILFORD

114-116 Cranbrook Road, Ilford

RICHMOND UPON THAMES

THE MOON UNDER WATER
53-57 London Road, Twickenham

SOUTHWARK

***THE FOX ON THE HILL**
149 Denmark Hill SE5

SURREY

THE REGENT
19 Church Street, Walton-on Thames

SUTTON

THE WHISPERING MOON
25 Ross Parade, Woodcote Road,
Wallington

THE MOON ON THE HILL
5-9 Hill Road, Sutton

BERKSHIRE

***THE OLD MANOR**
Church Road, Bracknell

THE MONKS' RETREAT
163 Friar Street, Reading

THE MOON UNDER WATER
86-88 High Street, Slough

BIRMINGHAM

THE SQUARE PEG
Units 1, 2 & 3 Temple Court, 115
Corporation Street

BRISTOL

THE COMMERCIAL ROOMS
43-45 Corn Street

THE BERKELEY
15-19 Queens Road, Clifton

BUCKINGHAMSHIRE

THE LAST POST
77 The Broadway, Chesham

THE FALCON
9 Cornmarket, High Wycombe

WETHERSPOONS
201 Midsummer Boulevard, Bouverie
Square, Milton Keynes

CHESHIRE

WETHERSPOONS
78-92 Foregate Street, Chester

DERBYSHIRE

THE STANDING ORDER
28-32 Irongate, Derby

WETHERSPOONS

553-556 London Road, North Cheam

TOWER HAMLETS

THE CAMDEN'S HEAD
456 Bethnal Green Road, Bethnal
Green E2

WALTHAM FOREST

THE DRUM
557-559 Lea Bridge Road, Leyton E10

WANDSWORTH

J J MOON'S
56a High Street, Tooting SW17

THE MOON UNDER WATER
194 Balham High Road, Balham SW12

THE SPOTTED DOG
72 Garratt Lane, Arndale Centre,
Wandsworth SW18

OUTSIDE M25**DORSET**

THE MOON IN THE SQUARE
4-8 Exeter Road, The Square,
Bournemouth

EAST SUSSEX

CLIFTONVILLE INN
98-101 George Street, Hove

ESSEX

THE ELMS
1060 London Road, Leigh-on-Sea

THE LAST POST
Weston Road, Southend-on-Sea

THE PLAYHOUSE
4 St. John Street, Colchester

THE MOON ON THE SQUARE
1-15 Market Square, Basildon

GWENT

WETHERSPOONS
Unit 10-12 The Cambrian Centre,
Newport

HEREFORD AND WORCESTER

THE GOLDEN CROSS HOTEL
20 High Street, Bromsgrove

KENT

THE MUGGLETON INN
8-9 High Street, Maidstone

LINCOLNSHIRE

THE TOLLEMACHE INN
St. Peters Hill
28 Catherine's Road, Grantham

LIVERPOOL

WETHERSPOONS
Units 1, 2 & 3 Charlotte Row,
Great Charlotte Street, Liverpool

THE RAILWAY

202 Upper Richmond Road, Putney SW15

THE GRID INN

22 Replingham Road,
Southfields SW18

WESTMINSTER

THE MOON UNDER WATER
28 Leicester Square WC2

WETHERSPOONS

Victoria Station SW1

THE MOON AND SIXPENCE
185 Wardour Street W1

THE LORD MOON OF THE MALL
16-18 Whitehall SW1

MANCHESTER

THE MOON UNDER WATER
68-74 Deansgate

WETHERSPOONS
49 Piccadilly

NORFOLK

THE BELL HOTEL
5 Orford Hill, Norwich

OXFORDSHIRE

THE EXCHANGE
49-50 High Street, Banbury

SOUTHPORT

WETHERSPOONS
20 Lord Street, Southport

SURREY

WETHERSPOONS
51-57 Chertsey Road, Woking

SUSSEX

THE RED LION
North Terminal, International
Departures Lounge, Gatwick Airport

THE JUBILEE OAK
6 Grand Parade, High Street, Crawley

WOLVERHAMPTON

THE MOON UNDER WATER
53-55 Lichfield Street, Wolverhampton

For more information on any Wetherspoon pub or activity write to:

J D Wetherspoon plc, Wetherspoon House, Central Park, Reeds Crescent, Watford, Herts WD1 1QH, or telephone (01923) 477774

* Children are allowed in these pubs at all times (denoted by asterisk) when accompanied by an adult and only when food is ordered.

BEER FESTIVAL ORGANISERS WARN OF THREAT TO REAL ALE

A popular beer drinkers' festival returns next week with a warning from the Organisers that real ale in pubs is under threat. Members of CAMRA fear that real ale sales are falling dramatically as a result of competition from a new breed of pastuerised beers, known as Nitrokeg.

"Real ale obtains it's unique taste from undergoing a secondary fermentation in the cask before it is sold. Keg beers, however, are pastuerised to give them a longer shelf-life, to the detriment of their flavour" explained Festival Organiser Andrew Padgham, "The new breed of keg beers are dispensed using nitrogen gas which gives them a frothy head and smooth taste, but they fall down on flavour and are also overpriced. Real ales, on the other hand, are naturally carbonated and have much more of an individual character. The problem is that not enough licensees look after it properly, and as a result many people are switching to the new keg beers because of their consistency. However, these beers will never beat a good pint of real ale when it's served in good condition."

The organisers of the beer festival, being held at the Lewisham Theatre in Rushey Green, Catford, hope to be selling over 70 real ales from around the country in good condition. A range of traditional ciders and perries will also

be on sale, as will English Country Wines.

The festival is open from Wednesday 5th June from 5pm to 11pm, then from Thursday 6th to Saturday 8th June from 12noon until 11pm. Admission is free other than on Thursday and Friday after 7pm when a £2 charge applies.

WATFORD & DISTRICT BRANCH LONDON PUB CRAWL

The Watford and District CAMRA Branch's next Pre-Christmas London Pub Crawl will be held on Friday 21st June 1996 and will be in the Chelsea/Kensington area.

This event has become something of an institution in southern England CAMRA circles and we always look forward to meeting friends old and new. Let's see if we can beat the record set a few years ago of 15 branches represented!

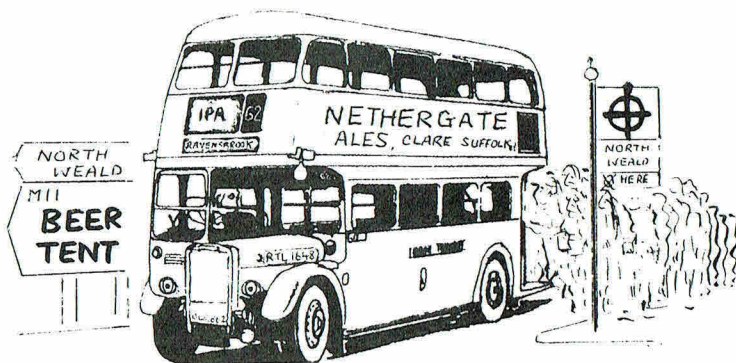
The itinerary will be as follows:

17.30, ANGLESEA ARMS, Selwood Terrace, SW7; 18.30 ROSE, SW3; 19.15 CROWN, SW3; 20.00, BUILDERS ARMS, SW3; 20.45, COOPERS ARMS, SW3 and 21.45, FOX & HOUNDS, SW1.

For further details or a map please contact Tony Smith on 01923 221155 (fax: 01923 218625).

BRANCH CONTACTS

LONDON PUBS GROUP	JEFF PRIMM	0181-683 3096 (H) 0171-973 3096 (W)
BROMLEY	See SOUTH EAST LONDON	
CROYDON & SUTTON	PAUL EVERITT	0181-686 5053 (H & W)
EAST LONDON & CITY	STEPHEN HARRIS	0181-519 0163 (H)
ENFIELD & BARNET	DEREK SMITH	0181-805 1436 (H & W)
KINGSTON & LEATHERHEAD	BRIAN BADE	0181-549 7486 (H & Fax)
NORTH LONDON	ALISON COX	0181-742 0498 (H) 0181-746 8148 (W)
RICHMOND & HOUNSLOW	BRIAN KIRTON	0181-384 7284 (H)
SOUTH EAST LONDON	ANDY CAMROUX	0181-854 1538 (H) 0181-331 8459 (W) e-mail: A.Camroux@gre.ac.uk
SOUTH WEST ESSEX	ANDREW CLIFTON	01708 765150 (H)
SOUTH WEST LONDON	MARTIN BUTLER	0181-542 3158 (H,W & Fax)
WATFORD & DISTRICT	TONY SMITH	01923 221155 (H & W) Fax: 01923 218625
WEST LONDON	BRIONY KERSHAW	0181-747 4890 (H) 0181-752 7886 (W)
WEST MIDDLESEX	ALEX KOVAC	0181-868 2540 (H) 01895 238592 (W)



North London Transport Society Real Ale at the North Weald Bus Rally Sunday 30th June, 1996: From 11am until 5pm

The North Weald Bus Rally is one of the largest transport events in the south of England. Every year on the last Sunday in June, North Weald Airfield in Essex plays host to a display of over two hundred buses and coaches of all shapes, sizes and ages from all over the British Isles. In addition, over one hundred stalls make up a giant flea market selling all kinds of transport memorabilia that is of interest to all generations. There will also be a number of stalls supporting various charities.

As a special feature, the 1996 North Weald Rally will include a **Real Ale Beer Tent** provided by the Suffolk-based *Nethergate* Brewery. The tent will be selling *Nethergate* IPA and other real ales. Please note that a wide range of food and soft drinks will also be provided at the Rally.

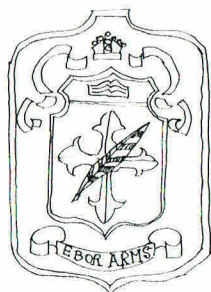
The Rally is well served by public transport so please don't drink and drive! Special vintage bus services run every fifteen minutes to and from Epping (London Underground) station throughout the day from 1000 until 1700. There will also be through services running from London Victoria Bus Station at these times: 0900, 0930, 0945 and 1015 (calling at Aldgate Bus Station 20 minutes later). These will return to London at the end of the day.

Admission to the Rally is £3.50 for Adults and £1.50 for Under 16s/Disabled/Senior Citizens/Unemployed. Please note that this does not include the fare for travelling on the special bus services.

The North Weald Rally helps to raise money for a number of charities. For more details of the Rally, and other events organised by the North London Transport Society, please send an SAE to:

The Rally Secretary, 8 The Rowans, Palmers Green, London N13 5AD.

THE EBOR ARMS, N16



The Ebor Arms is at 75 Howard Road, Stoke Newington, N16. It is the only pub in England so named, though there is an "Ebor" in Harrogate, North Yorkshire. Ebor is an abbreviation of Eboracum, the Roman name for York, and the Bishop of York

still signs himself "Ebor". The names of Howard Road and York Way further strengthen the Yorkshire connection in the area.

The present Ebor Arms probably stands on the site of a gatehouse which gave entry to a large monastery known to exist in medieval times in this locality. The pub sign shows a book and quill pen which leads one to think that the monastery specialised in copying and illuminating books. These gatehouses provided food and drink, and sometimes overnight lodgings, to travellers and pilgrims, a tradition carried on today by the present day landlord of the Ebor Arms, though sorry to say without the lodgings as there is no room at the inn.



The landlord Reg Hawkins and his wife Joyce are there to welcome any newcomers into the area, offering them four bitters as well as four lagers, two stouts and two ciders and the best selection of bottled beers. There is always a varied food menu available for meat eaters or vegetarians, along with tea and coffee at all times.

For entertainment the Ebor offers pool, darts, cribbage, dominoes and shove halfpenny. On the musical side there is background music or a juke

box. There are fortnightly discos, monthly karaoke and on Sunday mornings there is live music from duos or soloists such as Krammer and Kevin Gallagher which always go down a treat.

The regular real beers available are Courage Best and Directors Bitter. Current guest beers include Shepherds Grim Reaper (4.9% ABV) from Sidecup with Riddleys Rumpus and Spectacular Ale as well as Smiles Bitter coming up shortly.

PS. Any CAMRA member reading this article who pays a visit to the Ebor Arms will receive his first pint at half price on production of his membership card.

TRADING STANDARDS

Following an AGM motion all CAMRA newsletters are requested to publish the names and addresses of the Trading Standards Officers in their area. As London has 32 Inner London Boroughs and 8 outer London ones, our task will be enormous.

All London Branch contact names will be finding out their own TSO's addresses and phone numbers, but please remember that, as with any complaint, it is the customers duty to try to sort it out with the pub concerned. Failing a satisfactory outcome, please phone the branch contact (listed in every issue) or write to us at London Drinker. Many thanks to S.E. London who have already collected the addresses of those concerned at Bromley, Lewisham, Greenwich and Southwark.

LONDON DRINKER is published by the London Branches of CAMRA, the Campaign for Real Ale Limited.

Editors: Chris Cobbold, 25 Valens House, Upper Tulse Hill, London SW2 2RX. Tel: 0181-674 0556; Andy Pirson, 13 Belvedere Close, Teddington Middlesex, TW11 0NT. Tel: 0181-943 5344; Ian Amy, 89 Woodfield Road, Thames Ditton, Surrey, KT7 0DS.

SUBSCRIPTIONS: £7.00 for 11 editions should be sent to: Stan Tompkins, 122 Manor Way, Uxbridge, Middlesex, UB8 2BH.

ADVERTISING: Barry Tillbrook. Tel: 0181-989 7523.

Please be sure to send all Diary material to Andy Pirson.

Printed by Ark Litho Ltd., Silverglade, 405 Leatherhead Road, Chessington, Surrey, KT9 2QL.

DESERT ISLAND BEERS

Continuing our series started by John Gilbert last issue we have received two submissions for publication in future editions. Readers have to choose their eight favourite beers and indicate why they have selected those particular beers.

The best submissions will be printed in the July edition, so to keep it fair and avoid any cheating this month I have submitted my own choice.

Bateman Mild

The finest of them all tasted at its very best in a pub between Skegness and Butlins Holiday Camp where we used to escape to fill our containers for the forthcoming evening in the 'sea of fizz' bar.

Young Bitter

My staple drink and a beer I miss when I'm away. Mind you, I will only drink it in six pubs nowadays, where I know it will still be a truly bitter beer as it should be.

Robinsons Best Bitter

The best beer I have ever tasted was this ale on Crewe Station while awaiting a connection from Barrow-in-Furness. It was pulled up in erratic fashion by two barmaids who didn't know a beer engine from their elbows. We expected the worst of course but were stunned by the truly exceptional beer in those rather grubby glasses. We missed two more connections and I have never had such a pint of Robinsons since!

Yates Bitter

I first tried this in a free house in Boston, Lincs after refereeing for the CAMRA national football team who had just been bashed by the employees of Bateman's Brewery. We all delayed our departure and all other pubs in town until the barrel ran out. We have since ordered it for every Battersea festival and it is always gloriously bitter.

Holt Bitter

Bitterness by which all others should be judged. The company also have some of the best pubs in the country and some of the worst! I remember two good friends avoiding Holts in pubs which sold beer by electric dispense saying that they could taste the electricity? The value for money pint.

Hop Back GFB

Not truly bitter, but an ideal session beer

which never seems to cloy and is marvellously refreshing even when overindulgence has been the order of the day!

Freeminer Bitter

I tried this at Battersea and then at the Miners Arms in Sling in The Forest of Dean which is the company's only tied house. This marvellous pub is the ideal surrounding for this truly outstanding beer which tastes like a very bitter GFB! We stayed for four hours on a Sunday lunchtime which turned into a memorable session.

Holden Bitter

Anyone who has drunk in 'The Bottle and Glass' on a hot afternoon in the Dudley Museum will be aware of the marvellous atmosphere created by the volunteers who staff the pub. Just Holden's Mild & Bitter are sold from unmarked pumps which was the style at the turn of the century and customers who ask for lager or coke are told that they haven't been invented yet! The bitter is truly stunning and is complemented by the wonderful surroundings. The perfect way to enjoy a perfect pint!

Chris Cobbold

The Old Manor House

Bush Road, London, SE8
Telephone 0171 394 0841

*Surrey Quays only totally
"Free" Real Ale House*

***Youngs Ales always
available PLUS
constantly changing
Guest Ales***

*Comfortable surroundings
Hot Snacks available
We are in the 1996 CAMRA
Good Beer Guide*

THE DULWICH WOOD HOUSE, SE26

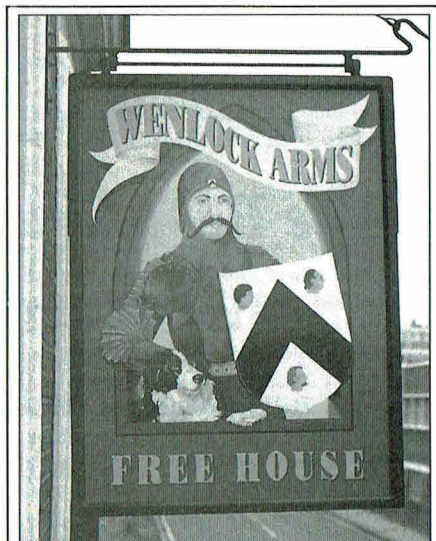
The Dulwich Wood House (see front cover) is the current South East London CAMRA Branch Pub of the Year. This very popular Youngs pub is halfway along Sydenham Hill between Dulwich and Sydenham, an area which became very fashionable in the mid 19th Century when the Crystal Palace was moved from Hyde Park to Sydenham Hill. One can still see many of the large mansions built by wealthy Victorians along Sydenham Hill, to escape from the notorious London fogs.

Sir Joseph Paxton, the architect of the Crystal Palace, is also believed to have designed at least four buildings in the area, subsequently converted to public houses. Obvious candidates are the "Wood House" itself, built in 1857 for George Ward, a local farmer, and the Paxton Arms in SE19 is another. We would be interested to hear from any readers who have any theories or evidence on the subject.

The "Wood House" still gives the impression of being in a rural location. Two blazing real fires in the winter, a grassy drinking area at the front and a large garden at the rear all help to create the atmosphere of a country pub many miles from the "Smoke". The garden has a piste for petanque (boules to you!) and its own bar with electric pumps, a rarity in London, for the dispense of cask conditioned beer. Since being managed by Peter and Jo Henderson the pub has been a regular entry in the Good Beer Guide. The Sunday lunches are a popular feature.

The local CAMRA branch is holding a lunchtime social at the "Wood House" on Sunday 30th June (in the garden, weather permitting) and extends a warm invitation to all readers (CAMRA members or not) to join the party. You should have no difficulty finding the local CAMRA members; they will undoubtedly be modelling the latest Catford Beer Festival leisurewear! So, if you fancy a drink in the country, the 63 from Kings Cross via the Elephant and the 202 from Blackheath via Catford stop outside the pub.

Dave Sullivan



A genuine Free House featuring a selection of the very best in Cask Ales, Traditional Cider and Perry

- Mild always available
- Lined glasses guarantee full pints
- Salt Beef Sandwiches
- Function room free to CAMRA members
- Jazz piano Sunday lunchtimes
- Jazz every Friday and 3rd Saturday evening in the month
- Open all permitted hours

CAMRA
NORTH LONDON
PUB OF THE YEAR
1995

26 Wenlock Road
London N1

0171 608 3406

Nearest Tube stations are Old Street (exit 1) and Angel. Wenlock Road is off City Road via Windsor Terrace



The Best News of the Summer

available from late June 1996

A new range of traditional and speciality beers
Suffolk's newest and most progressive Brewery
proudly presents

Best Bitter
Strong Bitter
Wheat Beer
Fruit Beer

with more quality beers
coming through the summer

Available at fine Freehouses across the capital

*For further information, or if you would like to
visit our Brewery at the 14th-century St. Peter's Hall*

contact:

Richard Eyton-Jones or Alistair Burnett, St. Peter's Brewery Co. Ltd.
St. Peter's Hall, St. Peter South Elmham, Bungay, Suffolk NR35 1NQ

Tel: 01986 782322 Fax: 01986 782505

CAMRA, ONE MAN'S VIEW

I joined the Campaign for the Revitalisation of Ale in 1972; it subsequently changed its name to the Campaign for Real Ale. Over the years other names have been suggested, for example The Beer Drinkers Union was favoured by Frank Baillie, the author of the early bible, the Beer Drinker's Companion and I am sure many others have surfaced at Regional Conferences, AGMs etc. after many pints of the much-worshipped ale.

But the Campaign for Real Ale remains our name and I think correctly. The problem is that most of the energy of the Campaign, and particularly its excellent and highly professional full time staff, now seems to be channelled in other directions. Look at a list of CAMRA's "achievements" over the past few years; far too few genuinely satisfy the vital criterion of the maintenance of the availability, quality, variety and individuality of British cask conditioned ale in traditional British pubs.

I never joined the Campaign for Cheap Ale yet endless price surveys are organised wasting valuable campaigning energy throughout the Branch network. Licensing hours; children in pubs; lined glasses - surely the biggest waste of campaigning energy since the Truman's Tap fiasco - and cider are all peripheral issues compared to the maintenance of quality ales, served in prime conditions in pubs in which ordinary people want to meet, talk and drink.

I accept that some of the licensing laws were archaic but they had a certain quaint charm! In the 1960's before the advent of the present, totally correct, strict drink driving legislation, I well remember travelling from Warwickshire to Worcestershire to get a late drink on a weekend evening. On the "stolen fruit is sweetest" philosophy, the chatting up of licensees to drink late was a challenge in itself which I, and many of my contemporaries, thoroughly enjoyed.

I have never understood the acceptance of cider under the CAMRA banner; it does not appear in the Articles of Association or memorandum of the limited company. I believe that it surfaced around 1975 when the Campaign definitely had more important

matters to address. The Sunday Times tried to set up a Campaign for Real Bread around that time too and frankly it would have been better had CAMRA adopted bread rather than cider.

Why am I concerned about the prominence given to peripheral issues? I am concerned because I believe that the Campaign is in serious danger of taking its eye off the ball. Fundamentally CAMRA has not won. The Beer Orders have not really increased choice; the current over capacity will be decreased and choice with it. The micro-brewers, though fun, are insignificant. As founder member Michael Hardman pointed out at the Portsmouth AGM, each of the 67 breweries listed in the 1974 Good Beer Guide which have closed since then brewed more beer than all the micros put together. Significant breweries are still closing. Nitrokeg is a serious threat. The pub-owning retailers which are presently offering some cheap real ales, but not generally the more distinctive ones, could be a five year wonder.

The London beer scene is far more interesting today than it was when I first arrived here in 1975. But will it be so at the beginning of the next millennium (1st January 2001, of course)? I fear it may not be and, if not, we will be to blame because we have allowed ourselves to be blown off course, not necessarily by the forces which we set out to fight twenty five years ago, but more by our own complacency and lack of critical analysis of which issues really matter.

To be specific, can there be anything more important to quality real ale and choice in the beer supply business in 1996 than the possible takeover of Carlsberg-Tetley by Bass? The effect on vast areas of the West Midlands and the north west would be cataclysmic. Yet at the recent CAMRA AGM the "main" debate was on cider. Quelle damage!

Chris Bruton

Views expressed in this publication are those of their individual authors and are not necessarily endorsed by the Editorial team or the Campaign for Real Ale Limited

FROM OUR ARCHIVES

FIFTEEN YEARS AGO the black on orange June 81 edition featured the original Beasley blind at the Village Blacksmith in Woolwich on the front cover. Inside Laurie Bishop in the editorial commented on a number of topical issues including beer duty and the fall in brewers' profits due to the recession and excess capacity. Little changes does it?

Two small stories marked the signs of the times, firstly that of a 59-year-old actor banned from his local, the King William IV in Hampstead, because he wore leather jeans, belt and waistbands with studs, beads and an earring; and secondly that 40 Trumans' managers resigned when it was disclosed that private security men were employed by the brewery to look out for fiddling.

A description of beer in Sri Lanka by Laurence Wiltshire and an article by Mostyn Lewis referring to The Cricketers (location unspecified) abridged and adapted from 'The Ragged Trousered Philanthropists' by Robert Tressell and first published in 1914 completed this issue.

TEN YEARS AGO in the editorial in the June 1986 edition, Martin Smith discussed the law surrounding the admission of under-18's

into licensed premises, and Martin concluded his two part historic crawl of the Surrey Iron Railway. The startling news of the month was, clearly, the appearance in court by Samantha Fox who was applying for a licence. The issue concluded with an article, containing a suitable checklist, by Peter Roberts on behalf of the Society for Hygienic Indoor Toilets, and it wasn't even an April issue!

FIVE YEARS AGO the blue/green front cover of the June 91 edition advertised the third Dorking festival and the thirteenth Greenwich event. Chris Cobbold's editorial dealt with the effects of the liberalising of the beer industry following the Monopolies' Commission findings. Shepherd Neame had announced a competition to find the warmest welcome in their then 313 pubs with a £1000 holiday for the winning licensee. In South West London the Hope and Anchor was presented with their award for being the branch's Pub of the Year, and they thanked Gerry Ranger of The Prince of Wales, Balham, who provided the licence for their recent beer festival.

That seems to complete the run-through of the appropriate June back-numbers, more next month.

Ian Amy

**Landlords - do you value your CAMRA
Good Beer Guide entry?**

**If so, rip out those fake handpumps
and install a real cider from the ethical
distribution company...**

CIDER WITH ROSIE

telephone 0181 406 1411

fax 0181 406 1412

**For real cider, at the best price
available in the marketplace**

WIMBLEDON PUB TAKES TOP CAMRA AWARD

SW London's new Pub of the Year is The Sultan in Norman Road, South Wimbledon.

The Sultan is already popular among ale buffs as it is the only London pub belonging to the Hop Back Brewery, and is "simply a Mecca for excellent quality ales," according to SW London CAMRA chairman Chris Cobbold.

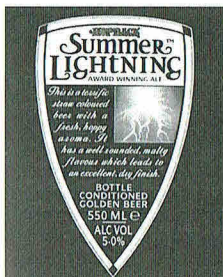
He adds: "The Sultan has some of the most distinct ales found anywhere – and they are always in peak condition. The pub is solidly traditional, with a pleasant and welcoming atmosphere. And the prices make it the tops when it comes to value for money."

Manager Dee Underwood was delighted with the award. "To win something like this at any time is something special but to win this award in our first year really is superb," she said.



With the award presentation over, Chris Cobbold gets down to celebrating with his own version of the balanced diet, watched by winning Manager Dee Underwood.

WIN A CASE OF SUMMER LIGHTNING



To help celebrate The Sultan's achievement, London Drinker has teamed up with Hop Back Brewery to give readers a chance to win a case of the new bottled Summer Lightning.

The award-winning premium brew (5% ABV) was launched in bottle-conditioned form only last month. Because this isn't a mass-produced beer (each bottle is done by hand) supplies are limited. Indeed, it is only available at Oddbins or at Hop Back's own four pubs. However, the case we swiped from the brewery at Downton can be yours to enjoy at a barbecue near you by answering the following question:

What infamous ship is referred to on the Sultan's closing time bell?

Send your answer on a postcard to arrive by June 29 to: Lightning Competition, The Sultan, Norman Road, London SW19. Don't forget to include your name, address and evening telephone number. The winner will be notified on June 30. Prize is to be picked up from the pub. Good luck!

Advertise in next month's

LONDON DRINKER

and get your message direct to the brewers, pub owners, licensees, festival organisers, pub regulars and drinkers of London and beyond

Call now, day or evening, 7 days a week

BARRY TILLBROOK

0181 989 7523

A NEW AND EXCITING HOLIDAY AVAILABLE FROM CAMRA!

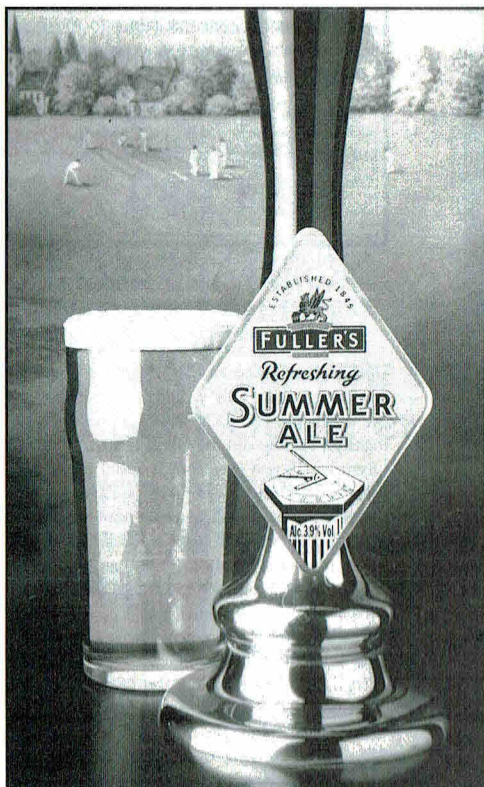
Bored with the same old holidays? Then why not try something new. This year from the 3rd of August to the 13th, nearly 900 CAMRA members will join together to help run the Great British Beer Festival at Olympia. If you have not worked at a beer festival before or even if you have, GBBF gives you the opportunity to try all sorts of new experiences. The jobs range from bar work to stewarding through to pub games and tombola. You can also try not only real ale bars but cider and foreign beer as well. Many people discover hidden talents at the beer festival. Even if you can only spare a day or even an hour your help will be appreciated.

Its not all work and no play, during the set-up and take-down days, brewery visits, pub crawls and other social events are arranged for your enjoyment. There is an on-site staff restaurant and staff beer is subsidised. Accommodation is provided and during the days that we are open free buses are provided to take you back to your digs.

So if you are tired of those Caribbean beach holidays then come and join the fun at Olympia. For further details and a staffing form please contact Janet Prescott, GBBF Staffing Officer on 01942 719 037 or watch out in your What's Brewing for staffing forms.



INDEPENDENT FAMILY BREWERS SINCE 1845



Fuller's Summer Ale has an abv of 3.9% and is available from June to September at the majority of Fuller's houses at around £1.65 per pint.

With the weather as it is, it may not seem like summer, but Fuller's brewing team has decided that it most certainly is! From 3rd June to 30th August you can tantalize those taste buds with Fuller's Summer Ale, the Brewery's light, golden 3.9% summer seasonal offering. Try a pint, and remember, one swallow doesn't make a summer, so best have two, or three or ...!

BEER BRIEFING

LONDON BEER GUIDES UPDATE 114

This month we report the opening of six brand new pubs. These include three from Whitbread comprising a riverside pub in SE16 Rotherhithe, one each for Hogshead and Brewers Fayre in Romford; two All Bar One's from Bass in EC4 St. Pauls and E14 Canary Wharf and a Surrey Free Inns pub in Kingston. More renamings are recorded including another pseudo-Irish conversion from Bass in W1 Mayfair.

The numbers in brackets after each entry refer to the page number in the following guides: E - East London & City Beer Guide, 3rd edition; K - 'Real Ale Drinkers Guide to Kent Pubs', 8th edition; N - North London Beer Guide, 3rd edition; SE - South East London Pub Guide, 4th edition; 3SE - South East London Pub Guide, 3rd edition; SW - Real Beer in South West London; W - Real Beer in West London; X - Essex Beer Guide, 8th edition. U refers to earlier updates. # indicates a guest beer.

If you would like to report changes to pubs or beers please write to: Beer Guides Updates, 2 Sandtoft Road, London SE7 7LR.

NEW & REOPENED PUBS & PUBS CONVERTED TO REAL ALE

CENTRAL

EC4, ALL BAR ONE, 46-48 Ludgate Hill. Bass. Fuller: London Pride. The Bass owned "All Bar One" concept chain continues to expand with this new bar in former commercial premises under a city office block. Light and spacious with bare floor boards, long tables and benches. Emphasis on food with track above bar to convey orders displayed on large blackboard to kitchen. Aproned staff; "nuts and beans" from dispensers; newspapers and the Beano to peruse. Beer range has deteriorated compared with earlier bars. Over 21's only. Open 11.30-11 Mon-Fri, 12-7 Sat.

EAST

E14, ALL BAR ONE, 42 MacKenzie Walk, South Colonnade, Canary Wharf. Bass. Fuller: London Pride. The twin of the city outlet listed above, this large spacious ground floor bar is located at the base of one of the Canary Wharf office blocks and has a southerly aspect overlooking the dock. Judging by the number of wine bottles displayed behind the bar, the emphasis is on wine drinking although beer drinkers appear to predominate. All the usual attributes are present. Open 11.30-11 Mon-Fri, 12-6 Sat & Sun.

ROMFORD, HOGSHEAD, 113-117 South Street. Boddington: Bitter. Flowers: IPA, Original Bitter. Greene King: Abbot Ale. Wadworth: 6X. Whitbread: Abroad Cooper, Fuggles Imperial, seasonal beers. Young: Special. Guest beers (including Exmoor and Wychwood beers). Large dimly lit Whitbread Hogshead Ale House in former shop premises. Advertisers up to 16 cask ales of which up to 8 guest beers are on gravity from casks behind the bar. Usual decor with wood panelled walls, polished wood floor, benches, bric-a-brac, mock fireplaces etc. Three raised areas are carpeted, Hops festoon the beams, pictures and photos cover the walls. Access to disabled WC. Food. Open all permitted hours.

ROMFORD, LIBERTY BELL, Mercury Gardens (junc. Western Road). Fuller: London Pride. Wadworth: 6X. Spacious new ground floor Whitbread Brewers Fayre pub attached to residential "Travel Inn" hotel. Emphasis on food

with large eating areas and adjacent indoor children's play area. Comfortably furnished with raised carpeted drinking areas and tiled bar area. Exposed brick (of course), bric-a-brac, mock fireplace. Outdoor seating areas back and front. Open all permitted hours.

SOUTH EAST

SE9, CASTLE, 140 Eltham High Street. Renamed **LAST ORDERS**. Bass: Toby Cask. Shepherd Neame: Spitfire. Basic high street boozier. (SE86)
SE16, SPICE ISLAND, 163 Rotherhithe Street. Boddington: Bitter. Flowers: Original Bitter. Fuller: London Pride. Guest beers from the Whitbread range including the seasonal beer (currently Spring Hop Ale), Morland Old Speckled Hen, Wadworth 6X etc. Large new flower bedecked riverside Whitbread pub/restaurant located at entrance to old Surrey docks on the opposite side of the Thames to the "Prospect Of Whitby" pub in E1. Opened in August 1995 but not previously reported. Brick built with an external timber balcony at first floor level reached by steps leading up from a large outdoor patio providing riverside views along the Thames and revealing the full extent of the riverside conversion from commercial to residential uses. The name reflects the area's former role as a centre for the spice trade and its former "Island Yard" name. The interior continues the "warehouse" theme with exposed brickwork, polished floors, cast iron look-a-like pillars and a wooden upper gallery housing a separate restaurant looking down over the bar area. Beers are all on swan neck dispense. Beware keg beers only in the upstairs restaurant. Adventurous menu including fresh fish and "adult" ice cream! Jazz on Sat and Sun evenings. Seafood stall in car park. Opens 11-11 Mon-Sat, 12-10.30 Sun, plus breakfast 9.30-12 Sat & Sun.

SOUTH WEST

SW11, HABERDASHERS ARMS, Eldridge Ppe: Dorchester Bitter. (SW40, U71)

KINGSTON, LITTEN TREE, 28/30 Castle Street. Courage: Best Bitter, Directors Bitter, Litten Tree: Best Bitter. Worthington: Best Bitter. Young: Special. Guest beer changing monthly. Beware Scrumpy Jack keg cider on handpump. New Surrey Free Inns Free House in former shop premises.

BEER BRIEFING
LONDON BEER GUIDES UPDATE 114
continued

Comfortably furnished with wood panelling and stained glass screens. "Library area" with settees is a no smoking area as is the bar itself. Quiet lunchtimes, music level increases in the evenings. DJs Tue, Thurs & Sat. Food 12-7. Disabled WC.

SURBITON, SAUCY KETTLE, 7/9 Brighton Road. Fuller: London Pride. Hancock: HB. Free House owned by operators of Kingston Mill in Kingston. (U105)

PUBS CLOSED OR CEASED SELLING REAL ALE

SOUTH EAST

CROYDON, CARTOON. Free House, closed, future uncertain. (3SE237, U52, U55)

SOUTH WEST

SW8, LORD PALMERSTON. Grand Met (ex-Truman), now being converted into flats. (SW33, U51)

SW9, GRESHAM. Charrington, H removed. (SW36)

SW9, WHITE HART. Phoenix (ex-Truman). No real ale. (SW37, U50, U112)

SW11, BOLINGBROKE. Charrington, H unused (SW39, U62)

SW11, ORIGINAL WOODMAN. Grand Met (ex-Watney), H unused. (SW41)

KINGSTON, GRIFFIN. Grand Met (Courage), believed sold on to S&N and then Magic. Now converted to shopping mall. (SW66)

OTHER CHANGES TO PUBS & BEER RANGES

CENTRAL

W1(May), CHESTERFIELD. Renamed **O'NEIL'S**. -Beers listed except Bass. Converted to pseudo-Irish theme pub. Previously **CHESTERFIELDS**. (W38, U92)

SOUTH EAST

SE20, GOLDEN LION. -Beers listed. +Ruddle: Best Bitter. Real ale not always available. (SE188)

SE23, MALT SHOVEL. -Beers listed. +Festival Bitter (ABV 3.7%, brewed by Carlsberg-Tetley). +Worthington: Best Bitter. +Occasional guest beer. (SE205)

SE25, ALBERT TAVERN. Renamed **PICKLED NEWT**. -Webster: Green Label. +Bass: Toby Cask. +Courage: Best Bitter. Now one guest including micro brewery beers. (SE213, U102)

SE25, SHIP. -Beers listed except Boddington Bitter and Whitbread Pompey Royal. +Flowers: Original Bitter. +Whitbread: Best Bitter, seasonal beer. Now transferred from Whitbread Hogshead to Beer Engine chain. (SE218)

SE26, GREYHOUND. -Ind Coope: Burton Ale. (SE223)

SE26, RAILWAY. +Railway Bitter (house beer, ABV 3.3%, brewed at Burton on Trent). (SE224)

SOUTH WEST

SW3, CROWN. -Beers listed. +Boddington:

Bitter. +Brakspear: Special Bitter. +Fuller: London Pride. +Greene King: Abbot Ale. +2 Guest beers. (SW21)

SW4, CROWN & ANCHOR. -Charrington: IPA. +Whitbread: Best Bitter. (SW24, U60)

SW8, MAWBEY ARMS. +Shepherd Neame: Spitfire or seasonal beer. Cask breathers discontinued. Now a Free House, ex Shepherd Neame. (SW34, U43, U51, U54)

CHESSINGTON, HARROW. -Courage: Best Bitter, Directors Bitter. +Bass. +Hancock: HB. Now a Bass owned Harvester, ex Courage, via THF. (SW62)

SURBITON, RED LION. -Beers listed. +Bass. +Hancock: HB. Now a Bass owned Harvester, ex Courage, via THF. Formerly **SULLIVANS**. (SW75, U39)

SUTTON, CORNER HOUSE. +Flowers: Original Bitter. +Marston: Pedigree. Now Whitbread, ex Free House. Formerly **GRAPES**. (SW76, U98)

SUTTON, CROWN. -Charrington: IPA. +Fuller: London Pride. (SW76)

SUTTON, DOLPHIN. +John Smith: Bitter. +Wadworth: 6X. (SW76)

SUTTON, FIELDER & FIRKIN. +Occasional special beers, eg. Balls Ale, Helmet Stout. Formerly **CRICKETERS**. (SW76, U46, U98)

SUTTON, RED LION. -Beers listed. +Bass. +Boddington: Bitter. +Webster: Green Label. (SW76, U59, U98)

WORCESTER PARK, PLOUGH. -Courage: Best Bitter. +Hancock: HB. Now a Bass owned Harvester, ex Courage, via THF. (SW78, U70)

CORRECTIONS TO UPDATE 108

OTHER CHANGES TO PUBS & BEER RANGES

SW18, BRUSH. Renamed **CATS BACK** (not CATS BLACK).

CORRECTIONS TO UPDATE 113

NEW & REOPENED PUBS & PUBS CONVERTED TO REAL ALE

EC1, HARLEM YACHT CLUB. Renamed **LITTLE LITTEN**, is now a Surrey Free Inns pub.

E4, COPPERMILL. Beer should read Thomas Greenall Original Bitter.

E14, DOCKMASTERS WINE BAR. Is a Free House. Access is off Canary Wharf Lower Roundabout. Description should read: Stone flagged floor, benches and barrel tables.

E15, KING HAROLD. Address is 116 High Road, Leyton.

PUBS CLOSED OR CEASED SELLING REAL ALE

SW3, ROSE. Lease to be taken over by the operator of PJ's.

OTHER CHANGES TO PUBS & BEER RANGES

EC1, BETSY TROTWOOD. Should read **BETSEY TROTWOOD**.

CORRECTIONS

SW6, KAKANGHS. Should read **KAVANAGHS**.

FULL MEASURE

The new guidance notes on draught beer dispense issued by the Brewers and Licensed Retailers Association are a significant improvement on previous notes and reflect the criticisms made on short measure...

Brim Measure Glasses

When dispensing beer with a head into a brim measure glass the head must reach the brim or above it to ensure that the quantity of beer (liquid and head) dispensed is at least a pint or half a pint. As the head collapses the small proportion of liquid it contains will fall into the rest of the beer and the gas will disperse into the atmosphere. When the head has totally collapsed the amount of liquid may be less than a pint or half pint. The deficiency will depend on the size of the head and the type of beer. **The Brewers and Licensed Retailers Association and the Retail Organisations have agreed that a head of froth is excessive and unreasonable if the measure of draught beer does not contain a minimum of 95% liquid after the collapse of the head. They recommend as strongly as possible that all licensees follow this principle.** The recommendation that the measure of draught beer should contain a minimum of 95%

liquid applies whether or not a top-up has been requested.

The following best practice should apply:

If beer is served in a brim measure glass at the time of service and the liquid level of the beer does not meet the customer's requirements, it must always be recognised that he can ask for a top-up to meet them. **Such a request should always be received with good grace and should never be refused** although spillage of liquid should be avoided. Many licensees have found useful the use of notices in bars where beer is served with a head in brim measure glasses reminding customers of their right to ask for a top-up.

Should bar staff have difficulty in serving any beer with a head in a standard brim measure glass so as to provide a measure with a minimum of 95% liquid consideration should be given to serving that product in a line measure glass or a special badged glass.

Line Measure Glasses

When beer is dispensed by free flow into a line measure glass sufficient beer (liquid and head) must be dispensed so as to ensure that if the head totally collapsed the liquid in the measure would be level with the line defining the measure.

APPLICATION TO JOIN CAMRA

I/We wish to become members of the Campaign for Real Ale Limited and agree to abide by the Memorandum and Articles of Association of the Campaign.

Name(s)

Address

.....Postcode

Signature.....Date

I/We enclose the remittance for individual/joint membership:

	Individual Annual	Joint Annual	Individual Life	Joint Life
UK and EEC	£12 <input type="checkbox"/>	£14 <input type="checkbox"/>	£120 <input type="checkbox"/>	£140 <input type="checkbox"/>
Rest of the World	£16 <input type="checkbox"/>	£18 <input type="checkbox"/>	£160 <input type="checkbox"/>	£180 <input type="checkbox"/>
Student/Unwaged	£6 <input type="checkbox"/>	£7 <input type="checkbox"/>		
Disabled	£6 <input type="checkbox"/>	£7 <input type="checkbox"/>	£60 <input type="checkbox"/>	£70 <input type="checkbox"/>
Retired	£6 <input type="checkbox"/>	£7 <input type="checkbox"/>	£60 <input type="checkbox"/>	£70 <input type="checkbox"/>

Send your remittance (payable to CAMRA Ltd) to:

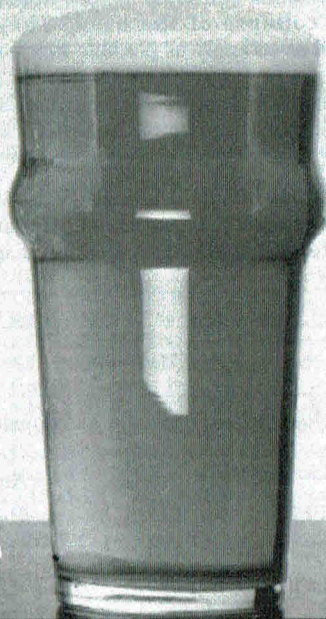
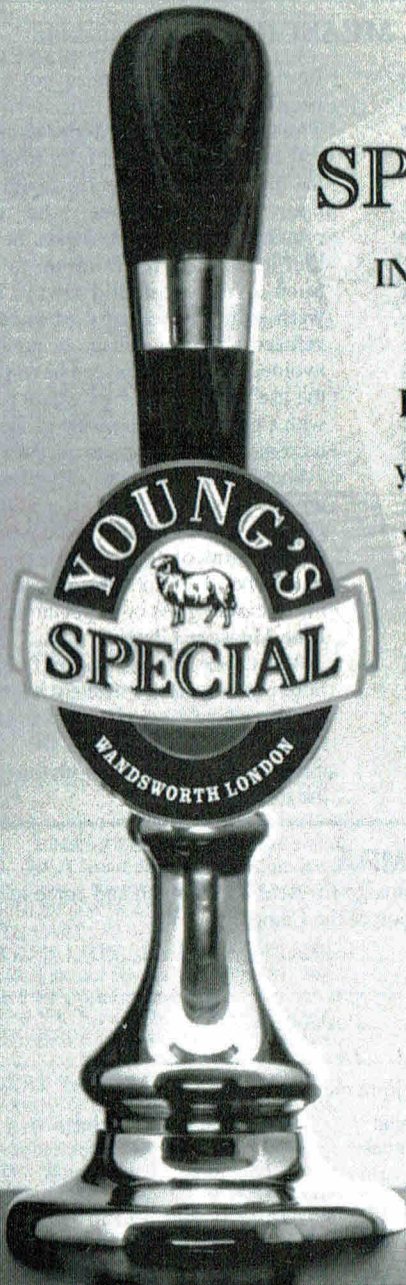
Membership Secretary, CAMRA Ltd, 230 Hatfield Road, St Albans, Herts AL1 4LW



WE SPECIALISE

IN EVERY CORNER OF
THE COUNTRY

If your Landlord doesn't
yet stock this famous ale,
we can advise on supply
on the Young's helpline



Young & Co.'s Brewery
Telephone: 0181-870 0141

LETTERS TO THE EDITORS (continued)

Dear Editors,

Having just read Andy Pirson's editorial in the May London Drinker I am glad that others have noticed the near "storm trooping" of south west London by licensed house operators, both national and regional. Though you clearly state that your list is not comprehensive, I feel that the true picture has been missed. Here I now have to juggle hats between local licensee and CAMRA member.

You will see from the attached list that in the 18 months that I have resided in Kingston no fewer than four new pubs have been built from scratch while another seven have had major refurbishments; this is apart from what is happening in Surbiton. Even as I write the Borough Arms has reopened after refurbishment and good old Wetherspoons are queuing up to get into the old Empire site.

If that's not enough at least three more sites have been earmarked for refurbishment in 1996.

Though, as my local branch states, this does indeed give more and varied choice to the consumer, it will make life harder for the tenant or single site operator who does not have access to a blank cheque book.

Keep up the good work.

Yours sincerely,
Steve Cannell,
Flamingo Brewery Co., Kingston.

Mr. Cannell's list is as follows:

1. Wetherspoons [1]
Existing shop front now empty; change of use granted.
2. Litten Tree [2]
Surrey Free Inns. Opened Thursday prior to Easter; described as Wetherspoons with music.
3. Artful Dodger [3]
Corporate Catering. B.R. station trade and local media.
4. Bishop out of Residence [3] Young's riverside flagship.
5. Gazebo [3]
Sam Smith's riverside flagship. [But no real beer any more - AP]
6. Shamus O'Donnells [2]
Discovery Inns fake Irish bar.
7. Ram [3]
S&N's T&J Bernard alehouse concept; no music and very popular with Uni. students.
8. Kingston Mill [1]
Main competitor to Flamingo in current market; has had several sets of plans.
9. O'Neills [3]
Bass Irish theme pub opened just before Christmas; very popular.
10. Financier & Firkin [2]

Trinity Arms

Biddenden Cask Cider

*REAL CIDER FROM A
REAL HANDPUMP*

BOTTLE CONDITIONED ALES

- ◆ *Wednesday: Piano Bar 9 pm*
- ◆ *Thursday: Jazz 8.30 pm*
- ◆ *Sunday: Quiz 8.30 pm*
- ◆ *Open all permitted hours*
- ◆ *Nearest tube Borough*

7 Trinity Sreet, London SE1

Tel 0171 207 5662

Allied's theme pub.

11. Baron's Puzzle [2]
Opened next door to Volts nightclub and caters for pre-nightclub trade.
 12. Druids Head [3]
Soon to be refurbished as a Whitbread Hogshead Ale House with three bars.
 13. Albion [3]
Magic Pub Co Hungry Horse concept.
 14. Barge [3]
Allied's flagship. Mainly underage pre-nightclub and lots of trouble.
 15. Power Station
Demolished and site earmarked for housing and casino.
- Notes: [1] Planned work for 1996
[2] Built from new
[3] Refurbishment

Dear Editors,

I noticed recently that the lesser of Young's two lagers is now styled "Young's: London: Lager".

I seem to remember that this 'drink' was once known as "John Young's London Lager". Does the change of name reflect the decline in the influence of Mr John in the affairs of the company, or did the old gentleman (belatedly) decide that his name should no longer be associated with a bland, fizzy, overpriced prototype for alcopop?

Brian Sheridan

continued from page 3

larger share. Only 100% of the cake will do for them and you'll pay for it! I can only take my hat off to them.

Regional brewers too have realised that the '90s customer demands a variety of types and styles of beer and they are beginning to react. Unfortunately, in many cases they are hamstrung with old-fashioned plant. A change of direction and new investment is needed.

In conclusion, the bigger breweries still hold all the cards. Regional and small breweries have got to fight hard for the real "free trade". To do this they need to produce the highest quality of beers and continue to buy their own pubs to guarantee a market for their wares.

Just as much as ever they need you, the discerning drinker, to continue to support the campaign for quality Real Ale. Otherwise all we'll end up with is nitrokeg. Over my dead body boys and girls! (at least that would give it some character!).

John Gilbert

BISHOPS BREWERY

Bishops brewery had good reason to celebrate as the South London based Micro Brewery, situated in the Borough market, has just changed its brewing process from malt extract to full mash and held a party to announce the fact.

Members of the South East London and South West London branches of CAMRA were in attendance, as well as press, publicans and other brewers including Hopback Brewery managing director John Gilbert, whose own brewery recently picked up the coveted international cask beer award.

On offer that evening, were the full range of four beers including:

CATHEDRAL BITTER ABV 3.7.

MITRE BEST BITTER ABV 4.2

CARDINAL ALE ABV 4.7

and the latest in the line:

THIRSTY WILLIES BITTER ABV 3.7

a light coloured session ale.

The brewery has recently made two one-off brews for sale locally, CATHEDRAL GOLD ABV 3.7, and the curiously named HOPSTALKER ABV 4.2. The latter was brewed exclusively for the Wheatsheaf which is also located in the Borough market.

Andrew Bishop who founded the brewery in 1993 said of the transition from extract to mash: "It's been fun but hard work, the tanks were converted by us from scratch and then there was the added problem that I had not actually brewed full mash for 12 years but I'm very pleased with the way things have gone. Going full mash has

improved the taste of the entire range."

The brewery has once again been loyally supported by the Catford beer festival and its organisers and due to the full mash conversion, has substantially increased its order.

Andrew said: "It's fantastic to be at Catford again and I think we can build for next year, targeting Battersea and of course the GBBF to widen the appeal of our beers. We also want to reach further north, seeing as southern ales generally receive bad press, it would be nice to change that."

SOUTH EAST LONDON NEWS & VIEWS

This year the Campaign for Real Ale, or CAMRA, celebrates it's 25th birthday. The South East London branch are making their annual beer festival at the Lewisham Theatre in Catford a part of the national celebrations.

"CAMRA started in March 1971, and our original aim was to fight the big breweries who wanted to replace traditional cask conditioned ales in pubs with flavourless keg beer" explained local Branch Chairman Andy Padgham, "we won the original fight: now nearly every pub sells real ale once more. However, we have now moved on to other issues concerning the drinker, which include campaigning for beer to be sold in full liquid measures, and for the harmonisation of tax on beer in line with the rest of Europe. At the moment, it is perfectly legal for a publican to serve you only 19 fluid ounces of beer instead of a full 20 ounces, and over a third of the price you will pay for it goes directly to the Government in taxes. Because of these and other issues, CAMRA is still as relevant to the drinking public today as it was all those years ago."

Many people still think that real ale drinkers are all middle-aged men with beards and big stomachs, but nothing could be further from the truth, continued Andy, "for example, of the 10 people who have organised this year's Festival, 4 of them are female, and the average age of the group is under 35. As Organiser, I'm the youngest at 23! Seriously though, what we are trying to show people is that everyone can enjoy a good pint of beer, regardless of sex, race, or even appearance!"

The Festival is open from Wednesday 5th June 5pm to 11pm, then from Thursday 6th to Saturday 8th June from 12noon until 11pm. Admission is free other than on Thursday and Friday when a £2 charge applies.

continued from page 2

**OUTLETS - SOUTH WEST and
WEST PUBS**

SW1BARLEY MOW
SW1BUCKINGHAM ARMS
SW1FOX & HOUNDS
SW1MORPETH ARMS
SW1ORANGE BREWERY
SW1ORANGE KIPPER
SW1PAVIOURS ARMS
SW1RISING SUN
SW1ROYAL OAK
SW2HOPE & ANCHOR
SW2CROWN & SCEPTRE
SW3COOPERS ARMS
SW3CROWN
SW3SURPRISE
SW4BEDFORD ARMS
SW4ROSE & CROWN
SW6DUKE OF CUMBERLAND
SW6WHITE HORSE
SW7ANGLESEA ARMS
SW8OLD RED HOUSE
SW8PRIORY ARMS
SW8SURPRISE
SW10 FERRET & FIRKIN
SW10 KINGS ARMS, 190 Fulham
Road
SW11 BEEHIVE
SW11 DUKE OF CAMBRIDGE
SW12 NIGHTINGALE
SW12 PRINCE OF WALES
SW13 BULL'S HEAD
SW13 COACH & HORSES
SW13 RED LION
SW13 ROSE OF DENMARK
SW14 HALFWAY HOUSE
SW14 HARE & HOUNDS
SW15 FOX & HOUNDS
SW15 GREEN MAN
SW15 RAILWAY
SW16 PIED BULL
SW17 CASTLE
SW17 J.J. MOONS
SW17 LEATHER BOTTLE
SW18 BREWERY TAP
SW18 HALFWAY HOUSE
SW18 OLD SERGEANT
SW18 PIG & WHISTLE
SW18 SPOTTED DOG
SW18 SPREAD EAGLE
SW19 BREWERY TAP
SW19 KINGS HEAD
SW19 PRINCE OF WALES, Morden
Road
SW19 PRINCESS ROYAL
SW19 SULTAN
SW19 TRAFALGAR
SW19 WIBBAS DOWN INN
SW20 CAVERN
CARSHALTON, GREYHOUND
CARSHALTON, RAILWAY TAVERN
CARSHALTON, WINDSOR CASTLE
CHESSINGTON, NORTH STAR
CHEAM, RAILWAY
HAM, HAND & FLOWER
KEW, COACH & HORSES
KINGSTON, ARTFUL DODGER
KINGSTON, CANBOY ARMS
KINGSTON, COCOANUT
KINGSTON, CRICKETERS
KINGSTON, DRUIDS HEAD
KINGSTON, FIGHTING COCKS

KINGSTON, FLAMINGO BREWERY
CO.
KINGSTON, KELLY ARMS
KINGSTON, NEWT & FERRET
KINGSTON, PARK TAVERN
KINGSTON, RAM
KINGSTON, SPRING GROVE
KINGSTON, TWO BREWERS
KINGSTON, WILLOUGHBY ARMS
KINGSTON, WYCH ELM
MITCHAM, QUEENS HEAD, Cricket
Green
MITCHAM, WHITE LION OF
MORTIMER
NEW MALDEN, ROYAL OAK
RICHMOND, BELVEDERE
RICHMOND, DYSARTS
RICHMOND, ORANGE TREE
RICHMOND, SHAFESBURY ARMS
RICHMOND, TRIPLE CROWN
RICHMOND, WATERMANS ARMS
RICHMOND, WHITE CROSS
SURBITON, DENBY DALE
SURBITON, NEW PRINCE
SURBITON, RISING SUN
SUTTON, FIELDER & FIRKIN
SUTTON, MOON ON THE HILL
SUTTON, NEW TOWN
WALLINGTON, WHISPERING
MOON
W1 BEEHIVE, 7 Homer Street
W1 CLEVELAND ARMS
W1 JACK HORNER
W1 MOON & SIXPENCE
W1 MORTIMER ARMS
W1 PRINCE ALFRED
W1 WESTMORELAND ARMS
W1 WINDMILL
W2 ARCHERY TAVERN
W2 ROYAL STANDARD
W3 KINGS HEAD
W5 RED LION
W5 ROSE & CROWN
W5 WHEATSHEAF
W6 ANDOVER ARMS
W6 BROOK GREEN HOTEL
W6 RICHMOND ARMS
W10 VILLAGE INN
W11 FROG & FIRKIN
W12 MOON ON THE GREEN
W13 DRAYTON COURT
W13 THE FORESTER
W14 WARWICK ARMS
BRENTFORD, MAGPIE & CROWN
CRANFORD, QUEENS HEAD
FELTHAM, MOON ON THE
SQUARE
HAMPTON, WHITE HART
HAMPTON COURT, KINGS ARMS
HAMPTON WICK, WHITE HART
HAYES, MOON UNDER WATER
HAYES END, MOON & SIXPENCE
HOUNSLOW, BEAVER
HOUNSLOW, CROSS LANCES
HOUNSLOW, MOON UNDER
WATER
HOUNSLOW, SUN
ISLEWORTH, COUNTY ARMS
ISLEWORTH, VICTORIA
SOUTHALL, BEACONSFIELD
ARMS
TEDDINGTON, LION
TEDDINGTON, QUEEN DOWAGER

TEDDINGTON, RAILWAY HOTEL
TEDDINGTON, WALDEGRAVE
ARMS
TWICKENHAM, KINGS ARMS
TWICKENHAM, NELSON
UXBRIDGE, PRINCE OF WALES
WHITTON, ADMIRAL NELSON
WHITTON, WHITE HART
OFF TRADE
W11 Grog Blossom
CLUBS
ISLEWORTH, Western Geophysical
Social Club
W1 Polytechnic of Central London
S.U. Bar, 104 Bolsover Street
OUTSIDE LONDON
ADDLESTONE, CRICKETERS
ASCOT, CRANBOURNE TOWER
BRIGHTLINGSEA, RAILWAY
BRIGHTON, EVENING STAR
BRIGHTON, SUSSEX YEOMAN
CATERHAM ON THE HILL, KING &
QUEEN
CHERTSEY, CASTLE
COLCHESTER, ODD ONE OUT
CROXLEY GREEN, SPORTSMAN
DENHAM (Bucks), LAMBERT ARMS
EAST MOLESEY, KINGS ARMS
EGHAM, JOLLY FARMERS
EGHAM, PRINCE OF WALES
EGHAM, WHITE LION
KNEBWORTH (Herts), LYTTON
ARMS
KNOWL HILL (Berks), OLD DEVIL
LALEHAM, FEATHERS
LEWES, GARDENERS ARMS
MANCHESTER, JOLLY ANGLERS
MORTIMER WEST END (Hants),
RED LION
OUTWOOD (Surrey), DOG & DUCK
POTTERS BAR, CHEQUERS
READING, HOBGOBLIN
READING, HOP LEAF
READING, MONKS RETREAT
READING, THREE GUINEAS
ROTHERWICK (Hants), COACH &
HORSES
SALISBURY, WYNDHAM ARMS
STEVENAGE, RED LION
SOUTHAMPTON, WATERLOO
ARMS
STAFFORD, STAFFORD ARMS
STAINES, BEEHIVE
STAINES, CAVALIER
STAINES, PHOENIX
STOW MARIES (Essex), PRINCE OF
WALES
STRATFIELD SAYE (Hants), NEW
INN
SUNBURY, FLOWER POT
SUNNINGDALE, ROYAL OAK
TILLINGHAM (Essex), CAP &
FEATHERS
WALTON ON THAMES, REGENT
WATFORD, WEST HERTS SPORTS
CLUB
WEST HORSLEY (Surrey), KING
WILLIAM IV
WEYBRIDGE, PRINCE OF WALES
WORCESTER, BREWERY TAP &
BREWERY
WORTHING, VINE
WRAYSBURY, PERSEVERANCE

THE EIGHTH
SURREY



BEER
FESTIVAL

28~29 JUNE 1996

LEATHERHEAD LEISURE CENTRE
GUILDFORD ROAD, LEATHERHEAD

70 REAL ALES AND CIDERS,
PLUS A SELECTION OF FOREIGN BEERS

Friday 11am-3pm admission £2.00, 5.30-11pm £3.00

Saturday 11am-11pm £2.00

NO ADMISSION AFTER 10.00pm, OR TO UNACCOMPANIED UNDER 18's

SOUVENIR GLASS FREE ON ADMISSION

FAMILY ROOM- HOT & COLD FOOD AVAILABLE AT ALL SESSIONS
10 MINS FROM LEATHERHEAD STATION