

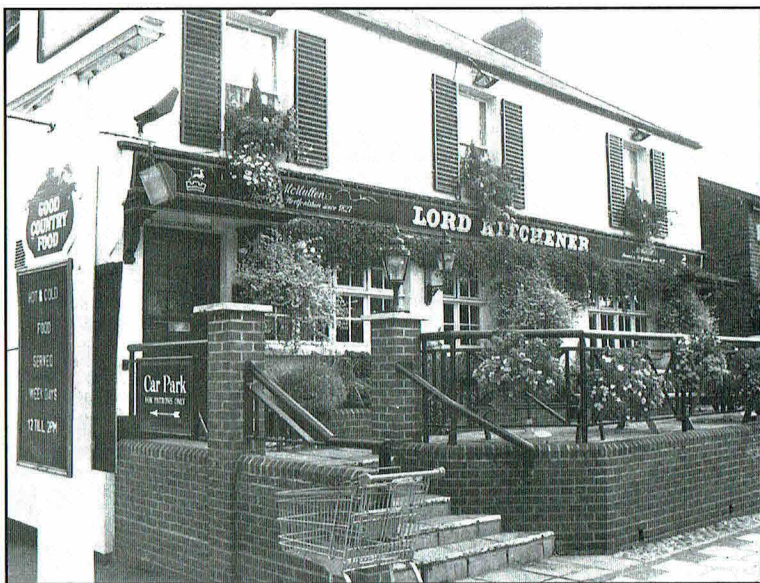
October
1995

LONDON



30p

DRINKER



The Lord Kitchener, East Barnet Road, New Barnet
– A mere trolley push from Sainsbury's

Photo by: Andy Milne

Vol 17

Produced by the London branches of the Campaign for Real Ale Ltd

No. 9

Where to Buy London Drinker

The following is a list of all the current outlets for London Drinker of which the editors have been informed. Full addresses are only given where there are two pubs of the same name in the same postal district.

OUTLETS – EAST and SOUTH EAST PUBS

EC1 ARTILLERY ARMS
EC1 BISHOPS FINGER
EC1 MASQUE HAUNT
EC1 PHEASANT & FIRKIN
EC1 ROSEBERRY
EC1 SEKFORDE ARMS
EC1 SHAKESPEARE
EC3 SWAN
EC4 BLACK FRIAR
E1 LORD RODNEYS HEAD
E2 CAMDENS HEAD
E3 IMPERIAL CROWN
E5 PRINCE OF WALES
E8 LADY DIANA
E9 FALCON & FIRKIN
E9 ROYAL STANDARD
E11 GEORGE
E13 VILLAGE
E14 QUEENS HEAD
E15 GOLDEN GROVE
DAGENHAM, LORD DENHAM
SE1 ANCHOR & HOPE
SE1 COPPER
SE1 FOUNDERS ARMS
SE1 GEORGE TAVERN
SE1 GOOSE & FIRKIN
SE1 GRAPES
SE1 HORNIMAN AT HAYS
SE1 KINGS ARMS
SE1 MARKET PORTER
SE1 OLD BRIDGE HOUSE
SE1 PRINCE WILLIAM HENRY
SE1 SHIP, 68 Borough Road
SE1 ST GEORGES TAVERN
SE1 TRINITY ARMS
SE1 WHEATSHEAF
SE1 WHITE HART, Cornwall Street
SE3 BRITISH OAK
SE3 HARE & BILLET
SE3 PRINCESS OF WALES
SE5 FOX ON THE HILL
SE5 PHOENIX & FIRKIN
SE6 BLACK HORSE & HARROW
SE6 TIGERS HEAD
SE7 McDONNELLS
SE8 CRYSTAL PALACE TAVERN
SE8 DOG & BELL
SE8 ROYAL GEORGE
SE9 BANKERS DRAFT
SE10 ADMIRAL HARDY
SE10 ASHBURNHAM ARMS
SE10 RICHARD I
SE13 FOX & FIRKIN
SE13 HOGS HEAD
SE16 BLACKSMITHS ARMS
SE16 MANOR TAVERN
SE16 MOBY DICK
SE18 COOPERS ARMS (Plaisted's)
SE18 EARL OF CHATHAM
SE18 ROSE'S (PRINCE ALBERT)
SE18 VILLAGE BLACKSMITH
SE19 ROYAL ALBERT
SE20 MOON & STARS
SE22 CRYSTAL PALACE TAVERN
SE25 ALLIANCE
SE25 GOAT HOUSE
SE26 DULWICH WOOD HOUSE

ADDISCOMBE, CLARET WINE BAR
BARKING, BARKING DOG
BARKINGSIDE, NEW FAIRLOP
OAK
BEXLEY, BLUE ANCHOR
CROYDON, ARKWRIGHTS WHEEL
CROYDON, BUILDERS ARMS
CROYDON, DOG & BULL
CROYDON, FIDDLER & FIRKIN
CROYDON, GEORGE
CROYDON, PRINCESS ROYAL
CROYDON, ROYAL STANDARD
ILFORD, GREAT SPOON OF
ILFORD
LOUGHTON, LAST POST
PURLEY, FOXLEY HATCH
SOUTH CROYDON, FIDDLER
& FIRKIN
SOUTH CROYDON, RAIL VIEW
WALLINGTON, WHISPERING
MOON

CLUBS

SE1 LENSURBY BAR, SHELL
INTERNATIONAL
SE3 BLACKHEATH &
NEWBRIDGE WMC
SE9 HOWARD CLUB
SE13 LEWISHAM LABOUR CLUB
SE18 PLUMSTEAD RADICAL
CLUB
CROYDON, RUSKIN HOUSE
OFF TRADE
E18 Gales Off Licence, 204 High
Road, Woodford Green
SE3 Bitter Experience, 129 Lee Road
BROMLEY, Bitter End, 139 Masons
Hill

OUTLETS – WEST CENTRAL and NORTH PUBS

WC1 CALTHORPE ARMS
WC1 CITTIE OF YORKE
WC1 ENTERPRISE
WC1 OLD MONK
WC1 PAKENHAM ARMS
WC1 PRINCESS LOUISE
WC1 RUGBY TAVERN
WC1 SUN
WC1 THREE CUPS
WC1 UNIVERSITY OF LONDON
WC2 CROWN & ANCHOR
WC2 FULMAR & FIRKIN
WC2 GEORGE IV
WC2 HOGS HEAD
WC2 MARQUESS OF ANGLESEY
WC2 MOON & SIXPENCE
N1 129 UPPER STREET
N1 COMPTON ARMS
N1 EARL OF RADNOR
N1 GEORGE & VULTURE
N1 MALT & HOPS
N1 MARQUESS TAVERN
N1 PRINCE ARTHUR
N1 WENLOCK ARMS
N2 WELCH'S ALE HOUSE
N4 OLD SUFFOLK PUNCH
BOWL
N4 TAP & SPILE
N4 WHITE LION OF MORTIMER
N4 WORLDS END

N6 OLD GATE HOUSE
N7 HOLLOWAY
N8 ELBOW ROOM
N8 RAILWAY TAVERN
N8 TOLL GATE
N9 LAMB
N11 BANKERS DRAFT
N12 TALLY HO
N13 WHOLE HOG
N16 NOBODY INN
N16 ROCHESTER CASTLE
N16 SHAKESPEARE
N17 CLUTTERBUCKS
N17 ELBOW ROOM
N17 NEW MOON
N19 DOG
N21 DOG & DUCK
N21 HALF MOON
N21 ORANGE TREE
N22 STARTING GATE
BARNET, MOON UNDER WATER
BARNET, WHITE LION
BARNET, YE OLDE MONKEN HOLT
COCKFOSTERS, TRENT TAVERN
EDGWARE, BLACKING BOTTLE
ENFIELD, MOON UNDER WATER
ENFIELD, OLD WHEATSHEAF
NEW BARNET, BUILDERS ARMS
NEW BARNET, LORD KITCHENER
NEW BARNET, RAILWAY BELL

OUTLETS – NORTH WEST PUBS

NW1 LORD NELSON
NW1 QUINNS
NW1 SPREAD EAGLE
NW2 BEATEN DOCKET
NW3 FLASK TAVERN
NW3 THREE HORSESHOES
NW4 CHEQUERS
NW4 GREYHOUND
NW4 PICKLED NEWT
NW8 PRINCESS ROYAL
NW9 J.J. MOONS
NW9 MOON UNDER WATER
NW9 WHITE LION OF MORTIMER
NW10 COLISEUM
NW10 GRAND JUNCTION ARMS
NW10 OUTSIDE INN
NW11 WHITE SWAN
HAREFIELD, PLOUGH
HARROW, MOON ON THE HILL
HARROW WEALD, SEVEN BALLS
HATCH END, MOON & SIXPENCE
KENTON, NEW MOON
NORTH HARROW, J.J. MOONS
RUISLIP, J.J. MOONS
SOUTH HARROW, J.J. MOONS
STANMORE, MALT HOUSE
WEALDSTONE, ROYAL OAK
WEALDSTONE, SARSEN STONE
WEMBLEY, J.J. MOONS

OFF TRADE

N1 Beer Shop, Pitfield Street
NW6 Grog Blossoms, 235 West End
Lane

CLUBS

NW4 HENDON SOCIAL CLUB,
Middlesex University Bus,
School

Continued on page 39

EDITORIAL

The recent price increase by Youngs is the latest slap in the face for their dwindling band of loyal regulars and for their hardworking and increasingly disillusioned managers and tenants already facing strong competition from pub chains locally.

Gone are the days when the brewery was content with a 2p or 3p increase. Now it seems that 6p and 7p are to be the norm. Youngs showed a cut of 14% in profits last year which was hidden by pub disposals. Goodness knows what the accounts will show next year when even less beer will be brewed and the customer base decreases. The brewery counter this by saying to managers that even though they will have fewer customers in their pubs, the people that are there will be paying more, so turnover in money terms should be similar.

I was recently drinking the the Hand and Racket in Wimbledon one lunchtime and it was packed with people drinking the wide range of cooled beer available. It was visited by three high-ups from Young's who own The Alexandra next door. I had already popped in there earlier, and it was nearly empty. What these three saw must have given them cause for concern as the business types who would normally be eating in The 'Alex' were instead standing shoulder to shoulder in this Whitbread House. We have given up trying to get a drinkable pint in The Alexandra, so we also now drink elsewhere. What had been the flagship of Youngs is now looking a bit sad for itself and the way the brewery destroyed the character of the old public bar beggars belief. With three competitors within 200 yards and a Wetherspoons set to open as well, something needs to be done. The same can be said of a number of other pubs facing similar competition.

So what is the brewery's panacea for these troubled times? Firstly an addition to their beer range; namely two beers so far. Victory Ale which was heavily subsidised and Dirty Dicks which must have proved less than a sensation in sales.

Secondly, a firm refusal to entertain any outside guest beers in their houses, even though a lot of Young's houses mislead the public by describing Dirty Dicks as a 'guest' beer! Thirdly, by squeezing the last pennies from their customers to artificially maintain profits.

I have written before about Holts of Manchester and how sought after their shares are in the market. They are one of the most profitable independent brewers, yet they can still manage to sell their Mild at 96p and Bitter at 99p per pint in their managed houses. This same

price applies whether the pub is in the City centre or in the suburbs; whether it has been renovated recently or not. Their redecorated pubs are as good as Youngs, but the pubs are always crowded with beer drinkers, not the lagerade merchants who tend to infest Youngs pubs recently. Why, Oh Why, cannot Youngs take a leaf out of Holts' book? I should imagine it is too late now as the Company seems to be locked into a price raising time warp, which it seems to be happy with. Well, I can tell you that we drinkers are not happy with the direction being taken by management.

★ ★ ★ ★ ★ ★

It seems that this wonderful government of ours has given the thumbs up the the takeover of Courage by Scottish and Newcastle. Should anyone care? Few people can accuse Courage of producing any beers of quality nowadays and the once great Directors now ranks with the insipid dishwater called John Smiths. S&N still produce Home Ales in Nottingham which are their best beers, but of course, one of the benefits of the merger will mean job losses and brewery closures, so that will mean that the Home Brewery will be axed along with others. Theakstons will probably be safe at Masham because otherwise S&N will have to come clean about where the beer is brewed. Most is brewed in Newcastle, though the licensees and drinkers are not told where a particular barrel is brewed. (How hypocritical of The Great British Beer Festival tasting panel to vote Old Peculiar best in class when the brewery of origin cannot be guaranteed!)

And yet all takeovers are bad news for the customers as the main point of the takeover is to enable the new company to rip their customers off more efficiently. So, at the very least, we can expect it to start another round of price increases and very likely another round of takeovers. Bass have already stated that they are not prepared to be second best and are casting around for a couple of independents like Greene King etc. The most likely target will be Carlsberg-Tetley or whatever they are called now. This would also be mourned by very few.

Scottish and Newcastle have already ruined the pubs and choice in Scotland. Now they are heading south to try the same with our pubs. So the takeover must be opposed even when it means fighting on behalf of such an unworthy cause such as Courage.

Chris Cobbold

Manchester beers in *from* **Wednesday** **11th October** **London!**

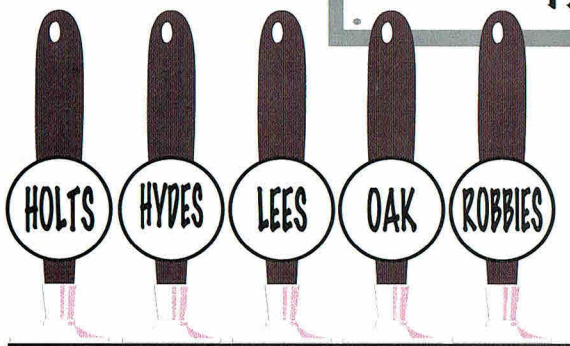
for one week or so (while stocks last)

featuring a selection from Manchester's finest:

WENLOCK ARMS

Joseph Holt
Hydes Anvil
John Willie Lees
Oak Brewery
Robinsons

CAMRA
NORTH LONDON
PUB OF THE YEAR
1995



- Mild always available
- Lined glasses guarantee full pints
- Salt Beef Sandwiches
- Function room free to CAMRA members
- Jazz piano Sunday lunchtimes
- Jazz every Friday and 3rd Saturday evening in the month
- Open all permitted hours

26 Wenlock Road, London N1 0171 608 3406

Nearest Tube stations are Old Street (exit 1) and Angel.
Wenlock Road is situated off City Road via Windsor Terrace.

IDLE MOMENTS

Well it seems that Autumn is arriving as I sit here producing this rubbish instead of working out how much I can get you to pay per pint at Feltham Beer Festival (which might well be all over by the time you read this). Still, there's no point moaning about the passing of Summer so we might as well get on with the answers to last month's number puzzles:

1. 5 Lines in a Limerick
2. 9 Men's Morris
3. 3 Points for a Score Draw on the Football Pools
4. 568 MilliLitres in a Pint of Beer
5. 38 Stations on the Piccadilly Line
6. 2 Equinoxes in a Year (One in Spring and One in Autumn)
7. 60 Old Pence in a Crown
8. 6 Dozen is Half a Gross
9. 3 Tunnels Under the English Channel
10. 12 Bore is the Calibre of a Shot Gun

And now that we have got things under way, we might as well carry on with total predictability and do this month's number puzzles. So here they are:

1. 5,256,000 M in a Y
2. 40 Y to your RWA
3. 1967 FCC his SHC of the W
4. 1 UP is a B
5. 86 F by SL and OH
6. 17 TTH by DR
7. 2880 FO in a K
8. 5 L on a MS
9. 49 B in the NLD
10. 25 P is a P

It's funny you know, I started doing these number puzzles in September 1988 and I still haven't repeated any yet; that's probably why they are all total bitches these days. Still you'd miss them if they weren't there. Now for something else that's been running for longer than I care to remember and having blown my nose, here are the answers to last month's brewery anagrams:

- | | |
|-------------------|----------------|
| 1. SOD ATE SOW | EASTWOODS |
| 2. LEAVE N.Y, LEN | NENE VALLEY |
| 3. BREWS ONE YEAR | BREWERY ON SEA |
| 4. SHAPED RING | SPRINGHEAD |
| 5. HAD RAIN | HADRIAN |

And so that you don't get withdrawal symptoms here are some more for this month:

1. HURL A.C. COVE
2. TROY'S HONK HIRER

3. BORN TOUGH
4. ROVER THE ALLY
5. KEMP WON'T

I suppose that when I started 5BY4 it was inevitable that I would eventually sink to getting you to match South American countries with their capitals. Well it is now sinking time so here is this month's collection of funny names under the unfunny epithet "It's Capital Down South":

- | | |
|------------------|---------------|
| 1. Paraguay | A. Bogota |
| 2. Uruguay | B. Cayenne |
| 3. Bolivia | C. Asuncion |
| 4. Venezuela | D. Valpariso |
| 5. Colombia | E. Montevideo |
| 6. French Guiana | F. Paramibo |
| 7. Surinam | G. Quito |
| 8. Peru | H. Caracas |
| 9. Chile | I. La Paz |
| 10. Ecuador | J. Lima |

If you don't know what to do with them, don't ask a stranger - just look at the answers following the general knowledge questions which will follow as soon as we get the answers to last month's out of the way (Well it makes sense to me):

1. The Vauxhall Cavalier
2. Great Western, Great Britain, Great Eastern
3. Uppark House
4. They are all breeds of terrier.
5. It was a large lavatory with seats for 28 people to make themselves comfortable simultaneously.
6. The decorative plaster rendering on the outside of a building (usually timber framed), particularly to be found in East Anglia.
7. Pakistan
8. Celtic and Rangers
9. James Garfield
10. A link

Have you ever wondered what is the difference between general knowledge and trivia? It seems to me that the main difference is that general knowledge questions were usually asked at school and you hated them while trivia questions are asked at parties and in pubs and you are supposed to enjoy them. So here is this month's collection of general knowledge questions:

1. What is the difference between a caryatid and a telamon?

Continued on page 6

Continued from page 5

2. What is a gnomon used for?
3. The ninth centenary of which church was celebrated in 1966 with a commemorative stamp issue?
4. Which cathedral celebrated its first centenary this year?
5. Who was voted English Cricketer of the Year in mid September?
6. London's first pillar boxes were installed on 11th April 1855. What colour were they originally painted?
7. The first pillar boxes in Britain came into use on 23rd November 1852. Where were they installed?
8. How many people have set foot on the Moon?
9. In Last of the Summer Wine Peter Sallis and Bill Owen have formed two of the famous triumvirate in all episodes but the third member has been played by three actors (playing different roles). Who were they?
10. What is the heaviest weight of vehicle allowed on the roads of Britain without a special permit?
1-C, 2-E, 3-I, 4-H, 5-A, 6-B, 7-F, 8-J, 9-D, 10-G.

SEPTEMBERFEST BEER FESTIVAL

Wetherspoon's is staging a Septemberfest beer festival in all its pubs between Thursday 28th September and Sunday October 1st. Thirty different cask conditioned beers will be served during the four day festival at a cost of £1.49 per pint. They include five which have been brewed exclusively for the beer festival and will only be available during the four days, and to complement the beers, each of the pubs will be serving two ciders, Thatchers Farmers Tipple Medium Cider and Biddenden Dry Cider, as well as mulled wine.

Among the 30 beers on offer are Burts Nipper, Thwaites Thunderbolt, Hopback Summer Lightning, Hook Norton Old Hooky, Cotleigh Barn Owl, Oakhill Yeoman Ale and Ridleys Mild. In order to help drinkers choose their beers, each of the pubs has produced a booklet describing the beers on offer, together with the alcohol volume.



CAMRA'S

11th NATIONAL BREWERIANA AUCTION & COLLECTORS' FAYRE

on

Saturday 4th November

at

The Drill Hall, Old Bedford Road, Luton
in conjunction with the Luton Beer Festival

Doors open 11am. Auction starts 1pm.

Admission by catalogue £1.50 (at the door) or, by post, £1.85
(cheques payable to CAMRA Fundraising) from:

Bill Austin, 21 Sussex Road, Watford, WD2 5HL.

Collectors' stalls available, contact Bill, as above, or tel: 01923 221217

MR GEORGES UNIQUE FLAVOURS

Bateman's Brewery of Wainfleet, Lincolnshire launched their second beer on 1st September, 1995 under the banner of "Mr George's Unique Flavours". Their first brew, Strawberry Fields 'Waynflete' Bitter, has been an outstanding success, sales have been 70% above budget.

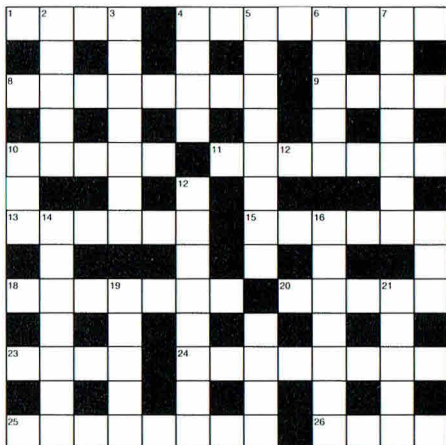
The second beer that remains very different from the norm, is Lincolnshire Yellow Belly Bitter. This beer has had vanilla pods added to the hops giving the beer a splendid vanilla aroma and a subtle vanilla taste with an A.B.V. of 4.0%. Martin Cullimore, Bateman's Head Brewer, when asked on his feeling of this next beer, said "I am very pleased with the result of Lincolnshire Yellow Belly Bitter. The vanilla flavour compliments our malt and hops, extremely well".

There has been some confusion as to why the second beer in Mr. George's Unique Flavour Collection is called "Yellow Belly". When asked, Jaclyn Bateman, Marketing Director of Bateman's Brewery replied, "Lincolnshire born people are known as Lincolnshire Yellow Bellies. The story emanates from a Lincolnshire man who put a frog in a cage, believing that its yellow breast would enable it to sing like a lark."

LONDON DRINKER CROSSWORD

Compiled by DAVE QUINTON

£10 PRIZE TO BE WON



Name

Address

.....

All correct entries received by first post on 25th October will be entered into a draw for the prize.

Prize winner will be announced in the December London Drinker.
Solution next month.

All entries to be submitted to:
London Drinker Crossword
25 Valens House
Upper Tulse Hill
London SW2 2RX

LAST MONTH'S SOLUTION



ACROSS

1. Constable painting the haywain. [4]
4. Distant of me and rather hard here in the country. [8]
8. It's true she goes to market. [8]
9. One pound standing order too. [4]
10. Complains about fish. [5]
11. Bowling rolling pins. [3,4]
13. See 5
15. When good it takes some beating. [6]
18. No part, I state, of the eye. [7]
20. Problems loading horse onto ship. [5]
23. Music pubs? [4]
24. Draw the line about note young girl returned. [8]
25. Secret ice store melted. [8]
26. In ecstasy about perfume, I hear. [4]

DOWN

2. Near a derelict stadium. [5]
3. Tyre rubber initially has plenty of tread. [7]
4. Light entertainment? [4]
- 5 & 13. Sportsman sore over frothy brew. [3,2,3,6]
6. See 16
7. Two men shooting roulette? [7]
10. Motoring organisation goes over vehicle. [3]
12. Man's man making one malicious report. [8]
14. Harps on about deprived kids. [7]
- 16 & 6. Long-standing listeners with electricity last ages. [7,5]
17. You get fumes from fag ash. [3]
19. Picture six-footer without a cent. [5]
21. Inexperienced conservationist. [5]
22. Mineral hidden in capital city. [4]

Winner of the prize for the August Crossword:
Alan G.Brooke, Eastcote.

Other correct entries were received from:

Aaron Aardvark, Paul Adams, Tony Alpe, Pat Andrews, Geoff B. The Bean, Richard Birch, Roger Boiler, Robin Bolt, Vi Brator, Fin Burns, Andy Camroux II, Roy Cawood, A.P.Comaish, Kevin Creighton, Robert Day, Mike Farrelly, B.H.Fletcher, D.French, Eileen Graves, Paul Gray, J.E.Green, Guy & Alison, Brian Hall, Jonty Hawkes, G.Hearne, John Heath, John Heekin, Alison Henley, Will Hill, H.James, Richard Jones, Phil Kempton, Doug King & Queen, Peter Kirten, Terry Lavell, M.J.Lee, Pete Large, Martin Ludgate, Mrs G.F.Maher, Dylan Mason, Jim Mason, David Morgan, Al Mountain, Charles Murray, Terry Neill, Rab Noolas, H.O'Connor, David Oddy, Stuart Osgood, Rod Prince, Derek Pryce, Kevin Reeve, Super Scooper, Ken Seymour, Paul Smith, Old Smokey, P.C.Tabor, Tarnya & Stephen, The Tegestologist, Bill Thackray, Neil Walton, Tony Watkins, "Weed", Spud Whale, Tony Whitford, Hazel Woodhams, Terry Wokey, Yak & Rosamund (Congratulations!), Robert Young.

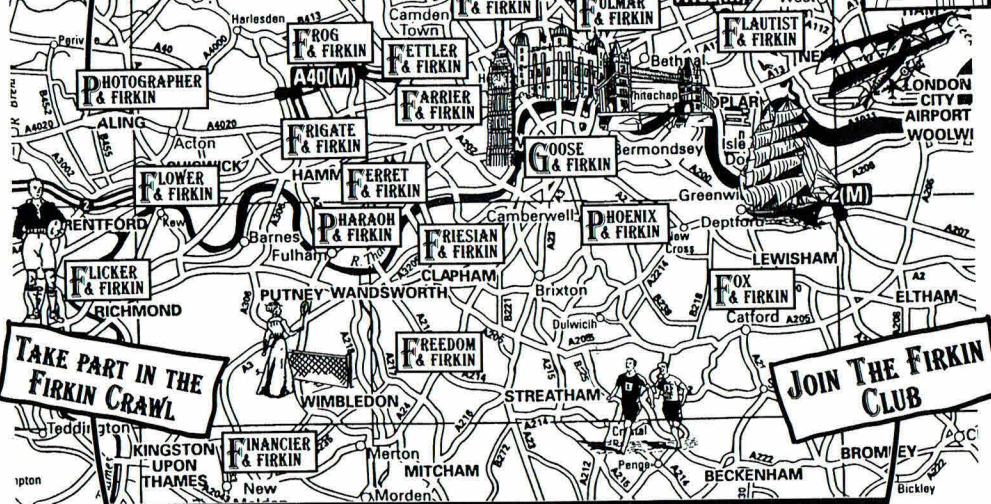
Firkin T-shirts, sweatshirts,
baseball hats, mugs, pins
and brewkits for sale in all
Firkins.

DAILY
NEWSPAPERS
AVAILABLE.

GUEST ALES FROM A
RANGE OF MICRO BREWERIES

FIRKIN FODDER,
FRESHLY MADE ON
THE PREMISES -
JUST LIKE OUR
BEER!

THE FIRKIN BREWERY



TAKE PART IN THE
FIRKIN CRAWL

JOIN THE FIRKIN
CLUB

REGULAR
LIVE MUSIC

PUB BREWED ALES
AVAILABLE IN ALL FIRKINS
3.5% A.B.V. BITTER
4.3% A.B.V. BEST BITTER
5.6% A.B.V. DOGBOLTER



ALE TRAIL

LETTERS TO THE EDITORS

Dear Editors,

I have been following with interest the editorial and letters that have been appearing in your excellent magazine over the past months concerning quarter pint swan neck dispense, versus half pint short neck dispense.

As Director of National Sales for Adnams, I am responsible for the sale of our beer outwith of our traditional free trade area, i.e. Anglia, and Adnams beer is dispensed through a wide spectrum of methods throughout the country. We have decided that, as a matter of policy, we will encourage retailers to serve Adnams through half pint pull, short spout beer engines, wherever possible, to ensure that the authentic taste of our beer comes through to the consumer wherever he is in England.

Adnams beer has always been brewed to be either gravity dispensed or half pint pull dispensed and consequently we are the traditional flat, southern beer - but our tastes are superb.

We will shortly be issuing retailers special stickers for our pump clips and sales aids for our beer, where our beer is traditionally served, in an effort to reinforce traditional southern beer dispense methods for southern ale. We will also be networking retail groups that use our beer to encourage them, wherever possible, to leave half pint pulls for southern beers, whilst installing quarter pint swan necks for northern beers.

CAMRA, of which I am a member, I believe should be exerting more pressure on retailers and retail groups, especially through the Brewery Liaison divisions to ensure that traditional methods of dispense are used for all beers. There is nothing wrong with Boddingtons, the superb Tetley and John Smiths being served through quarter pint pull dispense, along with many excellent regional brews - such as Mansfield, Wards, Robinsons, Thwaites etc. - but let's have Adnams, Wadworth, Youngs and Fullers served in the traditional southern manner.

I believe it is unfortunate that some of our major retail groups, such as Allied Domecq, Scottish & Newcastle and Whitbread, have

such big stakes in northern brewed beer, i.e. Theakstons, Boddingtons and Tetley. This obviously encourages northern dispense methods to be rolled out nationally.

CAMRA needs to mobilise its membership in backing the Adnams, Wadworth and Youngs of this world to ensure that traditional southern ways of serving southern beer are upheld, as much as the traditional northern ways are upheld. I believe this sort of campaign could be one that CAMRA could help and influence greatly. Let's support discerning retailers who use both methods of dispense, and ensure that the correct beers are on the correct pumps.

Kind regards,

Yours sincerely,

Roger F. Clayton, Director of National Sales,
Adnams Brewery.

Dear Editors,

I too was surprised and disappointed to read the stinging put down of the Head of Steam outside Euston Station in the July Drinker, particularly as I was about to write to you singing its praises and recommending other readers to try it. Okay, one or two of its beers are not cheap but there are plenty of others to choose from if you don't want to pay premium prices for premium beers. £1.29 for Highgate Dark and £1.59 for Shepherd Neame Masterbrew are both pretty reasonable value for money in my book, especially as neither is exactly commonplace in these parts.

The railway decor and general atmosphere are also a definite improvement on the dire establishment on Euston Station itself. The Head of Steam is a cracking good bar, well worth a visit and it doesn't deserve the pasting it got in your July issue when there are so many others charging outrageous prices for inferior beer in mediocre surroundings.

Save your vituperation for places like the Fountains Abbey near Paddington whose range of bog standard nationals starts off with Courage Best and Theakston's Best at £1.90 and works upwards from there!

Yours sincerely,

Graham Larkbey,
London N6

continued on page 10

continued from page 9

Dear Editors,

I am enclosing a copy of my letter to Samuel Smith's Brewery, complaining of their policy of withdrawing real-ale from their London pubs. As you can see, "The Crown" in New Oxford Street is another victim.

Yours sincerely,

George Callaghan

London SW11

Letter to Samuel Smith:

I have been a real-ale drinker for over 30 years, a considerable amount of that time has been spent drinking your "Old Brewery Bitter" both in London and in locations nearer the Brewery. It has an excellent reputation for its quality and value-for-money prices. The expansion of your pubs in London has made it a pleasure to obtain the beer more easily and usually in agreeable surroundings.

In the August edition of *London Drinker* was an article warning of the dangers of real-ale disappearing in the London area, and how it had already gone at the "Swiss Cottage", I was horrified last night to arrive at one of my favourite pubs "The Crown" in New Oxford Street to find there were no handpumps and no real-ale. I had arranged to meet a number of friends there, but we had to adjourn to a nearby Young's pub instead. I can understand that on certain evenings and weekends there might be a younger, or tourist clientele who might not drink real-ale, but I cannot imagine a lunch-time working, or business-type of clientele preferring keg-bitter. The reasons given for this trend seem to be very feeble indeed, as we are fortunate in London in getting an abundance of real-ale from various parts of the country.

I feel that this change of policy can only do great damage to your excellent reputation, and I am sure you will lose many loyal customers. Your advertising claims of being a traditional brewery will surely have to be revised; will you actually be boasting about your keg-bitter? I would appreciate it if you would send me a list of London pubs which will definitely continue to sell real-ale, and those which will not, in order that I can visit them with confidence? As I am unable to do

so at the moment, I am afraid that until I receive assurances that this miserable policy will not continue, you have lost me as a customer.

Yours sincerely,

George Callaghan

Dear Editors,

In response to your Editorial (September), several of the Sam Smiths pubs off Oxford Street, WC1 seem to have become nitrokeg only. Of course Sams is hardly the key problem here. It is the giant brewers and their desire for longlife high margin products that has led to the widget and to nitrokeg. It is essential that CAMRA is not just seen to be carping from the sidelines as newspaper articles, for example in the *Sunday Times* (August 27th), are starting to suggest.

One way to launch a positive campaign is to get as many people as possible to beer festivals so that they can taste the real thing and then, hopefully, demand it in their local. This is CAMRA ABC but with so many new members there is no harm in underlining it. New members are in fact the other key to our war against nitrokeg. If every new member is armed with the arguments for cash and against keg we have a powerful force where the big brewers can never reach, amongst ordinary drinkers.

Yours sincerely

Keith Flett

Dear Editors,

On VJ Day, a lovely Saturday to boot, several of us met to pay our respects to the veterans of the Japanese war.

On completion of our celebrations we all went off to the nearest pub selling Young's, our favourite brew, the Buckingham Arms a few minutes walk from the palace gates. To our astonishment the pub closed at 3.00 pm; there were at the time some 40 thirsty bemedalled old'uns drinking in the pub.

What purpose does John Young serve standing in Dover complaining that he can't sell beer due to the unfair competition when that afternoon he threw away some £500 worth of business?

Yours sincerely,

J. Insole, Sutton.

BRANCH DIARY

If your branch is not mentioned below, please ring the branch contact. Dates for October of which we have been notified are given below. Branches please send information to Andy Pirson. Branch contacts page 38.

CROYDON & SUTTON: Sun 1 (3.00) Extended Opening Hours Social. HEDGEHOG & HOGSHEAD, 2 High Street, Sutton – Tue 3 (8.00) Two Pub Social. HUNGRY HORSE, 449 Purley Way, Croydon then WADDON HOTEL (9.30), 2 Stafford Road – Wed 11 (8.30) Slide Show & Talk on Pubs. DOG & BULL, 24 Surrey Street, Croydon – Thu 19 (5.00) 3RD CROYDON BEER FESTIVAL. RUSKIN HOUSE CLUB, 23 Coombe Road (corner of Park Lane) – Thu 26 (8.30) Branch Meeting. WINDSOR CASTLE, 378 Carshalton Road, Carshalton (in the Cottage Room) – Sat 28 Country Pub Ramble. Ring Branch Contact for details.

EAST LONDON & CITY: Tue 3 (8.00) Branch Meeting. VILLAGE AT PLAISTOW, Balaam Street, E13 – Fri 13 (7.00) Charles Wells Passport Crawl. Start OLD GLOBE, 191 Mile End Road, E1 – Mon 23 (7.00) Branch Social. COLLEGE ARMS, Forest Road, E17 then FLOWER POT (8.30), Wood Street, E17 – Tue 7 Nov (8.00) Branch Meeting. Venue to be Arranged.

ENFIELD & BARNET: Tue 3 (9.00) Two Pub Social. WHEATSHEAF, 185 Baker Street, Enfield then JOLLY BUTCHERS (10.00), 168 Baker Street – Wed 11 (8.30) Branch Meeting. BULL & BUTCHER, 1277 High Road, Whetstone, N20 (Upstairs Room) – Sat 14 (12.00) Richmond Crawl. Meet ORANGE TREE, 45 Kew Road (Youngs – opposite station). Details from Branch Contact – Thu 19 (8.30) Good Beer Guide 1996 Launch & Pub of the Year. DOG & DUCK, 74 Hoppers Road, Winchmore Hill, N21 (Bus W9) – Thu 26 (9.00) Good Beer Guide 1996 Roadshow & London Drinker Pickup. MOON UNDER WATER, 148 High Street, Barnet – Tue 31 (9.00) Good Beer Guide 1996 Roadshow. WHITE SWAN, 243 Golders Green Road, NW11 (Buses 83, 183, 240)

KINGSTON & LEATHERHEAD: Tue 10 (8.30) Branch Meeting. ALEXANDRA, Park Road, Kingston – Sun 29 (4.30) Sunday Social. FINANCIER & FIRKIN, Kingston.

RICHMOND & HOUNSLOW: Tue 3 (8.00) Beer Festival Debrief. CROSS LANCES, 236 Hanworth Road, Hounslow – Mon 16 (8.00) Committee Meeting. RAILWAY, Sheen Lane, SW14 (open to all from 9.00) – Thu 26 (8.00) BRANCH 21ST BIRTHDAY PARTY. WHITE HART, 70 High Street, Hampton. Former branch members particularly welcome, especially if founder members. Contact Brian for further details.

SOUTH EAST LONDON: Mon 2 (8.00) Branch & Committee Meeting. DUKE OF EDINBURGH, Lee High Street, SE12 – Sun 8 (12.00) Social. JOLLY WOODMAN, Beckenham, Kent – Tue 18 (8.00) Pub of the Year Award Presentation. DULWICH WOOD HOUSE, Sydenham Hill, SE26 – Mon 23 (8.00) First Planning Meeting for 1996 Catford Beer & Cider Festival. CRYSTAL PALACE TAVERN, 105 Tanners Hill, Deptford, SE8. Contact for festival: Andrew Padgham (tel. 0181-291 2874 [H], 0181-693 2555 [W]) – Thu 26 (8.00) Social. TRINITY ARMS, Swan Street, SE1 – Fri 3 Nov (12.00) Brewery Visit Tour to Belgium. Two nights accommodation and transport arranged. Call Branch Contact for details.

SOUTH WEST ESSEX: Tue 3 (8.30) Social. SHIP, Princess Margaret Road, East Tilbury – Wed 11 (8.30) Social. CHEQUERS, 213 Rayleigh Road (A129), Hutton – Thu 19 (8.30) Social. OPTIMIST, Junc. Hacton Lane/Little Gaynes Lane, Upminster – Tue 24 (8.30) Social. FOXHOUND, 18 High Road (B188), Orsett – Wed 1 Nov (2.30) Brewery Trip to Young & Co, Wandsworth, SW18. Details/bookings: Wendy Benson (tel. Romford 723897).

SOUTH WEST LONDON: Mon 9 (8.00) Open Branch & Committee Meetings and Branch Meeting (Pub of the Year shortlisting). HOPE & ANCHOR, 123 Acre Lane, SW2 (venue subject to confirmation) – Tue 31 (7.30) Crawl of Wimbledon Broadway. Meet at HAND & RACKET, 25-27 Wimbledon Hill Road, SW19.

WATFORD & DISTRICT: Wed 4 (9.00) Mill End Survey. WHIP & COLLAR then TREE (10.00) – Tue 10 (9.00) Campaign Social, Oxhey Village. RAILWAY ARMS then VICTORIA (10.00) – Wed 18 (9.00) Bushey Heath Social. BLACK BOY – Wed 25 (9.00) Good Beer Guide Launch. LAND OF LIBERTY, Herronsgate – Sun 29 (8.00) Branch Committee Meeting. WEST HERTS SPORTS & SOCIAL CLUB.

WEST LONDON: Wed 11 (8.30) Social. WHITE HORSE, 1 Parsons Green, SW6 – Wed 25 (8.00) Branch Meeting. FOUNTAINS ABBEY, 109 Praed Street, W2.

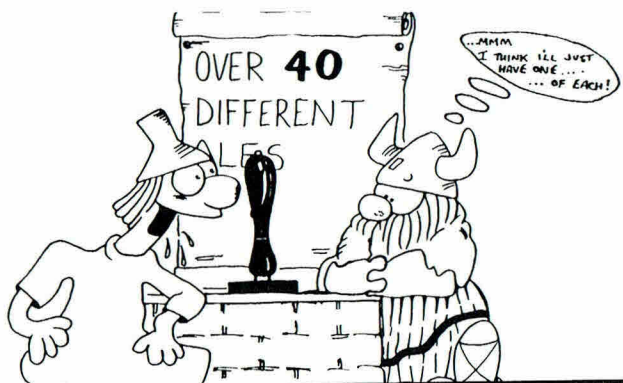
Continued on page 13

REAL ALE FESTIVAL

at
The Roseberry

Exmouth Market, London EC1

Telephone 0171 278 0968



Mick and Yvonne welcome you to try
some of their **40 REAL ALES** being
served from **1st OCTOBER 95** for
ONE MONTH.

- ◆ Hot & Cold Food Mon to Fri 12 to 2.30
- ◆ Sunday 3 Course Roast Lunch £4.50
- ◆ Roseberry House Bitter (abv 3.6%) @ £1 pint
- ◆ Live Sport on the Big Screen
- ◆ Open all permitted hours

Continued from page 11

WEST MIDDLESEX: Tue 3 (8.30) Social. J J MOONS, 20 The Broadwalk, Pinner Road, North Harrow – Thu 12 (8.30) Social. CROWN, Colham Green Road, Colham Green – Wed 18 (8.30) Branch Meeting. DUKE OF YORK, 86 Steyne Road, Acton, W3 – Thu 26 (8.30) Social & London Drinker Pickup. WHEATSHEAF, 41 Haven Lane, Ealing, W5 – Thu 2 Nov (8.30) Social. DEBURGH ARMS, High Street, Yiewsley – Tue 7 Nov (8.30) Social. SEVEN BALLS, 749 Kenton Lane, Harrow Weald. Deadline for the November edition, 2nd October. Material for December to arrive by 1st November. **Please be sure to send all diary material to Andy Pirson.**

NEWS FROM THE NETHERLANDS

Friends of Henk Eggens, the popular and colourful licensee of Cafe in de Wildeman will be concerned to hear that he had a heart attack at the end of July. Although he is now beginning to recover, he still has a long way to go. Anyone who would like to drop him a card or a note can do so at this address:

Mr Henk Eggens,
Cafe "in de Wildeman",
N.Z. Kolk 5,
1012 PT Amsterdam,
The Netherlands.

Henk is one of the heroes of the Dutch beer revival. He and his partners Paul and Herman used to run Cafe Gollem, where they established the idea of beer specialist cafes in the Netherlands. At one time Gollem offered about 200 different beers, in a tiny bar. Since then, the partnership has split up, with the members going their different ways. Henk's current bar is just over 300 years old, somewhat plain, but well worth a visit. He still offers a wide selection of beers, as well as good food. One of the two bars is smokeless.

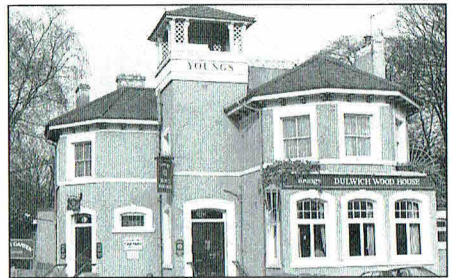
Visitors to the Bokbier Festival this month will find that "In de Wildeman" is the nearest good beer-cafe. Cross Damrak from the corner of the Beurs, down an alley, across the Nieuwedijk (the pedestrianised shopping street), and along Kolksteeg. Kolksteeg changes name partway down, to N.Z. Kolk: and that is where the cafe is.

Views expressed in this publication are those of their individual authors and are not necessarily endorsed by the Editorial team or the Campaign for Real Ale Limited

POPULAR "COUNTRY" PUB IN DULWICH WINS TOP LOCAL AWARD

The Dulwich Wood House in Sydenham Hill, SE26 has beaten over 850 pubs to win a top award from CAMRA. Members of the south-east London Branch have voted it their Pub of the Year for 1995.

"The quality of the beer is our main consideration when judging, but we also take into account other factors such as facilities available," explained Andrew Padgham, the local CAMRA chairman, "The Dulwich Wood House is an excellent example of a community pub, offering full range of facilities to both drinkers and families with children, in a friendly atmosphere. In fact it's just like a typical country pub, except it's in the middle of London!"



The Dulwich Wood House, 88 Sydenham Hill, SE26, has been an entry in the Good Beer Guide continuously for the last 19 editions. It has a large local following, and also offers French Boules (or Petanque) and has thriving golf and cricket clubs. Along with a range of Youngs beers it also offers lunch time food, and specialises in Sunday lunches and summer barbecues.

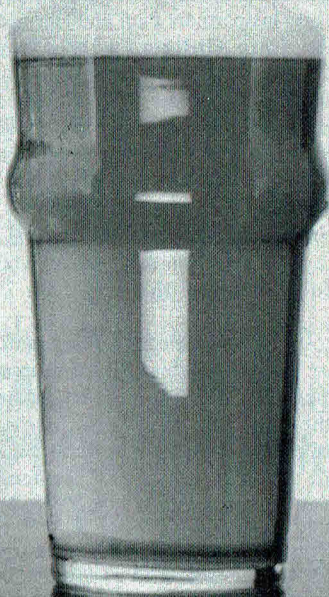
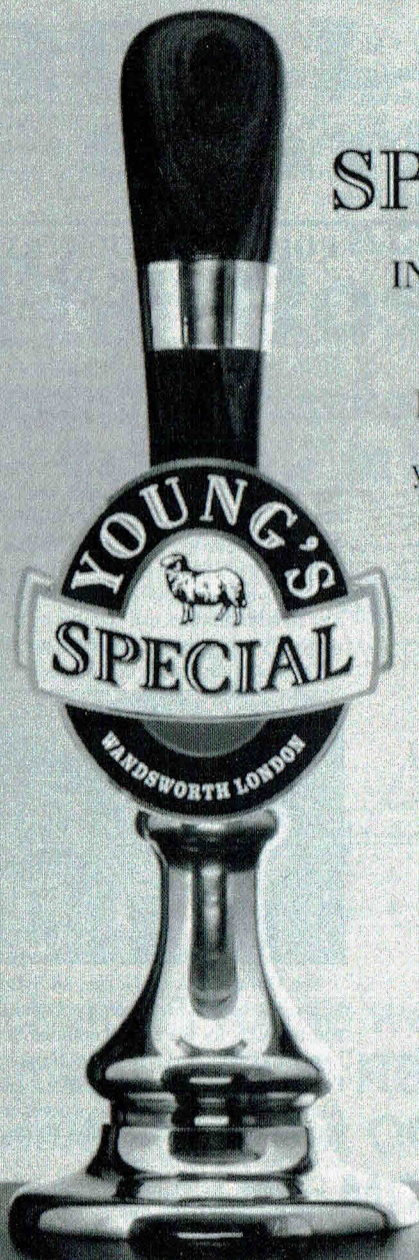
Licensee Peter Henderson said "We are delighted to receive this award. The quality of the beer is our number one consideration but we also make a special effort to ensure we look after our customers. After all, without them there would be no pub!"

A presentation will be made to mark the award on Thursday the 17th of October at 8pm. Free beer and food will be available.

WE SPECIALISE

IN EVERY CORNER OF
THE COUNTRY

If your Landlord doesn't
yet stock this famous ale,
we can advise on supply
on the Young's helpline



Young & Co.'s Brewery
Telephone: 0181-870 0141

FROM OUR ARCHIVES

Firstly I must apologise for the non-appearance of my article in the last edition. Vast upheavals on the domestic front precluded any chance of preparing it as my house was sold and I only had a few days to re-arrange my affairs. As a result, my typewriter is currently in storage and thus unavailable, therefore any mistakes that follow are due to my often illegible handwriting (even to myself) not to my long-suffering typesetter.

To digress, as did Keith Emmerson by his own admission in last month's East End News, I have no say in what goes into London Drinker, only the content of my articles, whose appearance or otherwise is entirely at the discretion of the Editors. As it happens, only one of my Archive articles has ever failed to appear, that for September 1992, the script was posted but never arrived. I agree wholeheartedly with Keith's suggestion of a survey of members' views on LD's content. For example, are my archive articles of interest/use, or am I wasting time, effort and magazine space?

On his compliments slip enclosed with my copy of the last issue, Ian requested a résumé of what SHOULD have appeared last month which follows.

September 1980: CAMRA was ten years old, and real ale had become a trendy drink, which was reflected in prices: a pint cost over 45p in most Central London pubs. Mild was becoming increasingly harder to obtain. The number of Watney's pubs handpumps was increasing. Fuller's were about to launch cask conditioned Chiswick Bitter in place of bright bitter at the GBBF. In connection with that, Lawrie Gordon presented a crawl of the pubs in the vicinity of the Alexandra Palace, the venue of the Festival.

Fullers had reopened the Leather Market Tavern in Southwark as a real ale tied house. Bass was considering scrapping the Burton Union fermentation system. The second part of the Real Beer in London supplement, on pink paper, appeared as a 4-page pull-out centre section. Richard Plumb contributed a crawl along Holborn. S&N were introducing McEwan's 70/= into their pubs.

September 1985: Merton presented an Out of Town Historicrawl of Arundel, West Sussex.

Fullers, Greene King, Marston and Courage had reported increased profits.

Belhaven had bought its first London pub, the Mansion House in Deptford.

September 1990: The Tipparary in Fellet Street had re-opened after complete rebuilding – all but the original facade had been demolished. Young's beers were to be available in Courage pubs. Two Tap & Spile Ale Houses had opened in London, in Lea Bridge Road E10 and Crouch Hill N4.

Now for this month's Archives:

FIFTEEN YEARS AGO the blue cover of the 20 page issue bore a Victorian engraving of Eldridge Pope's Brewery in Dorchester, to complement an article by Charles Fox in the content about the company's history, and listing 20 outlets in London stocking its products.

The fight continued to save the Horsleydown brewery which Courage planned to – and certainly did – close down.

Alan Greenwood, who then wrote a regular Beer Diary column, outlined the origins of India Pale Ale (IPA) and Imperial Russian Stout, the latter a bottled beer produced by Courage, and then under threat. Richard Plumb explored the area mainly north of High Holborn visiting six pubs.

The prizes at the GBBF at Alexandra Palace went to Thwaites Mild (Best beer), Youngs Special (Strong beer) and Golden Hill Exmoor Ale.

One pub, the Nightingale in N8, had dropped its prices as a result of pressure from customers. It was a Watney's house. We could do with a national co-ordinator for such campaigns.

A new edition of Real Beer in London had been published, costing 75p, as had Real Ale in Central London, a street map showing 470 pubs, price 40p.

TEN YEARS AGO royal blue was the second colour of the 32 page October 1985 issue, appearing on 8 pages including both covers. On the front was a photograph of The

Continued on page 17

NICHOLSON'S FREE HOUSES REAL ALE FESTIVAL

2nd - 28th ~ 1995 ~ October

Nicholson's Free Houses have been purveyors of famous Real Ales from around the country for many years. In celebration of this they are offering over 30 Real Ales throughout their London estate during October.

To join us in celebrating this you can claim a

FREE PINT
of Draught Burton Ale
OR WIN A BARREL
of your favourite 'Festival Ale'.

For further information pick up a leaflet from a participating Nicholson's Free House during the Festival.

Antelope, 22 Eaton Terrace, SW1
Argyll Arms, 18 Argyll St, W1
Australian, 29 Milner St, SW3
Barley Mow, 8 Dorset Street, W1
Blackfriar, 174 Queen Victoria St, EC4
Bloomsbury Tavern, 236 Shaftesbury Avenue, WC2
Butlers Head, 11 Telegraph St, EC2
Catherine Wheel, 23 Kensington Church Street, W8
Clachan, 34 Kingly St, Regent St, W1
Clifton, 96 Clifton Hill, St Johns Wood, NW8
Coal Hole, 91 The Strand, WC2
Crown Tavern, 43 Clerkenwell Green, EC1
Devonshire Arms, 21 Devonshire St, Gt Portland St, W1

Dog & Duck, 18 Bateman St, Soho, W1
Doggetts Coat & Badge, 1 Blackfriars Bridge, SE1
Fox & Anchor, 116 Charterhouse St, EC1
Globe, 37 Bow St, WC2
Golden Lion, 25 King St, St James's, SW1
Horniman at Hays, Hays Galleria, Tooley St, SE1
Leinster Arms, 17 Leinster Terrace, W2
Maggie, 12 New St, EC2
Northumberland Arms, 43 Goodge St, W1
Old Bell, 96 Fleet St, EC4
Old Thameside Inn, Pickfords Wharf, Clink St, SE1
Paxtons Head, 153 Knightsbridge, SW1
Punch Tavern, 90 Fleet St, EC4

Red Lion, 8 Lombard Court, EC3
Red Lion, 2 Duke of York St, Jermyn St, SW1
Shelleys, 10 Stafford St, W1
Ship, 11 Talbot Court, EC3
Southwark Tavern, 22 Southwark St, SE1
Three Greyhounds, 25 Greek St, W1
Throgmortons, 27A Throgmorton Street, EC2
Viaduct Tavern, 125 Newgate St, EC1
Walkers of Holborn, Norwich St, EC4
Walkers of Whitehall, Craig Court, 15 Whitehall, SW1
Walkers of St James, 32A Duke St, St James's, SW1
Walkers of Fenchurch St, 18 London St, EC3
Williamsons Tavern, Groveland Court, off Bow Lane, EC4

Continued from page 15

Woodman, Battersea High Street, with the caption "A long standing LD outlet".

In an Editorial reprinted from the August 1983 issue, Chris discussed the various inscrupulous practices of certain landlords to boost their profits by way of "returns", or to minimize their losses due to the breweries' reluctance to make allowances on spillage.

An un-named writer explained in "Beer Strength" the meaning of O.G. and its relationship to taxation on beer, and that the average alcoholic strength of beer has dropped during this century. At the time of writing, it was not mandatory to state the A.B.V. of a beer i.e. its alcohol by volume, by chemical analysis.

In "Anything to Declare?" an author using the pseudonym Eamon O'Ther (work that out!) wrote about brewery passport schemes and their flaws, which could lead to participants collecting their prizes by taking short-cuts.

In "Personal Views", a prominent CAMRA member attacked the negative campaigning then prevalent, such as "Don't buy —", as this organization was founded to promote choice, no latter what took the drinker's fancy.

The Guinea, Mayfair (Yongs) had reopened after six months' closure for a complete facelift.

The history of Watney's brewery appeared in the first section of a two-part article. Much of the history was gleaned from a book provided by Watneys, with whom this magazine was then on excellent terms, and to my knowledge no inaccuracy was detected.

Real Ale in South-East London had been issued. It covered 2,500 pubs in its 240 pages, and cost £2.50.

For what I think was the first occasion, the title which heads this piece appeared. Beneath it was a reproduction of half a page from five years previously and one smaller section — both covering points incorporated above.

"Eleven around the Oval" was Tony Flatman's crawl of Kennington visiting 11 pubs.

FIVE YEARS AGO apple green appeared as the second colour on eight of the October 1990 edition's 32 pages. On the front cover a photograph of the King's Arms, Hampton Court appeared.

In the guest Editorial, Dave Sullivan advocated boycotting Whitbread pubs and products — they were then CAMRA's Public Enemy No. 1 due to their closure of breweries.

Idle Moments came up with its usual crop of brain-teasers and false negatives.

Denys Vernall, in "The Evacuation Train" recounted a fictitious ghost story wherein a holidaymaker, after imbibing in a home brew house, encountered the psychic replot of a wartime rail disaster.

Roger Protz reminisced about his early drinking days in the 50's in London — it was entitled "Roger's Ramblings".

Chris Cobbold chronicled an excursion, headed "To Henley and Beyond", visiting that town, parts of Bucks, Berks and Hants. Beer had no small part of the narrative.

I'm getting writer's cramp and no doubt the typesetter has eyestrain, and anyway I'm well behind schedule.

Until next time.

Cheers!

Martin Smith

LONDON DRINKER is published by the London Branches of CAMRA, the Campaign for Real Ale Limited.

Editors: Chris Cobbold, 25 Valens House, Upper Tulse Hill, London SW2 2RX. Tel: 0181-674 0556; Andy Pirson, 13 Belvedere Close, Teddington Middlesex, TW11 0NT. Tel: 0181-943 5344; Ian Amy, 89 Woodfield Road, Thames Ditton, Surrey, KT7 0DS.

SUBSCRIPTIONS: £7.00 for 11 editions should be sent to: Stan Tompkins, 122 Manor Way, Uxbridge, Middlesex, UB8 2BH.

ADVERTISING: Barry Tillbrook. Tel: 0181-989 7523.

Please be sure to send all Diary material to Andy Pirson.

Printed by Ark Litho Ltd., Global House, 21a Lombard Road, London SW19 3TZ.

A FORTHCOMING FESTIVAL

The fifteenth PINT Bokbier Festival will be held on Friday 13th to Sunday 15th October at the Beurs van Berlage, Damrak, Amsterdam. This smart and comfortable venue is only a couple of minutes from Amsterdam Centraal Station, towards the Dam Square. This is the EBCU's European Beer Festival of the Year.



18th PINT Bokbier Festival Beurs van Berlage

Damrak
Amsterdam

Friday 13 October 1995 5pm-11pm
Saturday 14 October 1995 12noon-11pm
Sunday 15 October 1995 12noon-7pm
3 min from Amsterdam Centraal Station

ALL DUTCH BOCK BEERS ON DRAUGHT*

properly served with CO₂ gas

*Subject to availability from the brewery



EBCU International Beer Festival of the Year 1995

Bokbier is the Dutch winter brew, and all the Dutch breweries make one every year. Bok is a dark, full-bodied beer of 6 to 6.5% ABV, and ranging from medium-dry to fairly sweet. It is the equivalent of our old ales or winter warmers, although technically it is bottom-fermented, and therefore in a sense, a lager.

PINT is, of course, the Dutch sister organization of CAMRA, and a fellow-member of the European Beer Consumers Union. CAMRA members going to the festival, or indeed any other PINT event, should take their membership cards. All EBCU organizations offer reciprocal entry rights: you pay the same as a member of the host organization.

Lytton Arms

Old Knebworth, Herts

- ★ UP TO 15 ALES AVAILABLE EVERY SESSION
- ★ OVER 1250 REAL ALES IN SEVEN YEARS
- ★ 100 BOTTLED BRITISH & CONTINENTAL BEERS
- ★ 50 MALT WHISKIES
- ★ REGULAR MINI BEER FESTIVALS
- ★ O'HAGANS SAUSAGES & VARIETY OF CHEESES
- ★ 25 MINUTES WALK FROM KNEBWORTH BR STATION
- ★ SCRUFFY LANDLORD & 3 LEGGED CAT
- ★ For more info 01438 812312

SHOCKING SCANDAL OF SHORT MEASURE PINTS

A survey by CAMRA, shows three quarters of customers feel short-changed in pubs. CAMRA's survey was conducted among ordinary customers at the 1995 Great British Beer Festival.

76% of those surveyed said they had been given short measure.

26% of those surveyed said they were 'often' short-measured.

But of those who said they received short measure, 63% 'sometimes' or 'never' asked for a top up.

"This survey shows the shocking extent of short measure," said CAMRA Campaigns Manager Stephen Cox. "Most customers expect to be short-measured at least some of the time."

"What is really shocking is how often customers do not ask for a top up, as they are entitled to. Asking for a top-up sounds simple, but of course at busy times it is socially difficult, and in unfamiliar bars, no-one knows the response. This means that pubs can often get away with it.

"With courts being lenient on short measure, and customers unable to assert their rights, the problem of short measure will continue to grow."

(The above percentages related to measures in pubs, not at GBBF - Ed)

CHILTON BREWERY VISIT

On Saturday 2nd September the Chilton Brewery in Terrick, near Wendover, Bucks celebrated its 15th birthday with an open day which included brewery trips, beer tasting (obviously) and a good chance to sample other products from the brewery – cheeses, fudge and recently introduced, sausages!

The brewery is situated on what appears to be a farm and really comprises two old barns, one of which has the mashtuns and coppers (both very small) in the other – various fermenting vessels and a large brewery shop. The fairly brief trip visited all these areas, included the usual ‘how beer is brewed’ talk and described the beers. These are Chiltern Ale at 3.7% a very pleasant and flavoursome session beer, Beechwood at 4.3% (the best bitter) which I found to be rather average and not really much of anything and 3 Hundreds Old Ale at 4.9% which was slightly wineous but very very dull for a beer of this gravity. In all fairness, I have tried the Beechwood and 3 Hundreds before and found them very enjoyable and much more flavoursome than at the brewery (a similar problem with Eldridge Pope, Morland, Youngs, Elgoods etc.)

Trying to find these beers in the freetrade is quite difficult. Most of the output is sold to local free houses, the one closest to London is in Bushey – the Black Boy. I almost forgot the Badgers Barley Wine which is a bottle conditioned beer only and at 8.5% ABV (It was available at the White Horse, Parsons Green Old Ale Festival last year as a one off cask conditioned beer). The brewery shop who sold three kinds of sausages (all include their ales), cheeses, malt fudge, chutneys, ‘Mash Tun Marmalade’ and a beer shampoo!! I can certainly recommend all these items except the latter which I have not tried (yet)!

A very enjoyable visit and I can particularly recommend the shop which is open Monday to Saturday and where you can usually taste the beers. All the best for the next 15 years.

After the visit I was fortunate to get a lift to Aylesbury to try out a few of their pubs. Two very good pints of Charles Wells Eagle in their tied pub and before that a visit to the excellent ‘The Grapes’. My mission here was to sample beers by the new Vale Brewery

which is based in Haddenham. The pub had Notley Ale (3.3%) and Wychert Ale (3.9%) available – the former a very pleasant session beer, full of flavour even though my taste buds were already slightly impaired! The latter was a little disappointing – less flavoursome than the Nutley, although a little more malty. Be warned though, this pub does sell the beers through ubiquitous sparklers on the end of the dispense. However marks must be awarded as there is a large sign advising customers who do not like thick creamy heads to ask for these widgets to be removed. The bar staff were only too willing and out came pints of ale with a small head yet full of condition.

Simon Fyffe

PHIL'S REMEDY FOR TIREDNESS

Forget the assertions of tiredness in the Wetherspoon range of beers. At the Moon and Stars at Penge there is now a selection of five guest beers available in addition to the regular Wetherspoon offerings. As an example, on Saturday 19 August the guest beers were (not in order of preference) Hopback Summer Lightning, Goacher Gold Star, Ringwood Old Thumper, Bunce's Danish Dynamite and Old Peculiar. Those tested were very drinkable especially at £1.68 per pint and £1.88 for the Old Peculiar and sales are going very well.

The person responsible for the extension of the range of beers available was the Manager Phil Thomas. At the latest six monthly Wetherspoon beer festival sales in the Moon and Stars really took off and stocks were exhausted long before the scheduled end of the festival. The popularity of the guest beers prompted Phil to approach the Wetherspoon hierarchy to extend his range. Now the customers at Penge are spoilt with a mini-festival every day.

Alas Phil has now left Penge but has handed over to Steve and Sarah, previously under managers, and the continuity of the guest beer policy is assured.

Good news for patrons of Wetherspools at Victoria Station – Phil and his partner Lou have now taken over there.

BARKING AND DAGENHAM

THE BARKING DOG

61 Station Parade, Barking

THE LORD DENMAN

270-272 Heathway, Dagenham

BARNET

THE MOON UNDER WATER

148 High Street, Barnet

THE WHITE LION OF MORTIMER

3 York Parade, West Hendon Broadway, NW9

THE RAILWAY BELL

13 East Barnet Road, New Barnet

THE MOON UNDER WATER

10 Varley Parade, Colindale, NW9

***THE TALLY HO**

749 High Road, North Finchley, N12

THE BLACKING BOTTLE

122-126 High Street, Edgware

BEXLEY

THE WRONG 'UN

234-236 The Broadway, Bexleyheath

BRENT

J J MOON'S

553 Kingsbury Road, Kingsbury, NW9

THE OUTSIDE INN

312-314 Neasden Lane, Neasden, NW10

J J MOON'S

397 High Road, Wembley

THE COLISEUM

Manor Park Road, Harlesden, NW10

BROMLEY

THE MOON AND STARS

164-166 High Street, Penge, SE20

THE HARVEST MOON

141-143 High Street, Orpington

CAMDEN

THE MAN IN THE MOON

40-42 Chalk Farm Road, Camden, NW1

THE BEATEN DOCKET

50-56 Cricklewood Broadway, Cricklewood, NW2

THE THREE HORSESHOES

28 Heath Street, Hampstead, NW3

CROYDON

THE GEORGE

17-21 George Street, Croydon

THE MOON UNDER WATER

1327 London Road, Norbury, SW16

THE FOXLEY HATCH

8-9 Russell Hill Road, Purley

EALING

THE RED LION AND PINEAPPLE

281 High Street, Acton, W3

ENFIELD

THE MOON UNDER WATER

115-117 Chase Side, Enfield

THE WHOLE HOG

430-434 Green Lanes, Palmers Green, N13

THE HALF MOON

749 Green Lanes, Winchmore Hill, N21

WETHER

NOW

- **The Commercial Rooms**, Corn Street, Bristol
- **The Lord Moon of the Mall**, 16-18 Whitehall, London SW1
- **The Berkeley**, 15-19 Queens Road, Clifton, Bristol
- **The Moon Under Water**, 68-74 Deansgate, Manchester
- **The Moon and Spoon**, 86-88 High Street, Slough, Berkshire

OPENIN

- **The Standing Order**, 28-32 Irongate, Derby
- **The Moon Under Water**, Units 10-12, The Cambrian Centre, Newport, Gwent
- **Wetherspoons**, Units 1 and 2, Charlotte Row, Liverpool
- **Wetherspoons**, 6-12 Gladstone Road, Wimbledon
- **The Exchange**, 49-50 High Street, Banbury
- **Wetherspoons**, 201 Midsummer Boulevard, Bouverie Square, Milton Keynes
- 6 Grand Parade, High Street Crawley
- 7-9 Regent Road, Great Yarmouth
- **The Regal**, Kings Square, Gloucester

** Children are allowed in these pubs at all times (denoted by asterisk)*

THE BANKER'S DRAFT

36-38 Friern Barnet Road, New Southgate, N11

THE LAMB

52-54 Church Street, Edmonton, N9

EPING FOREST

THE LAST POST

227 High Road, Loughton

GREENWICH

THE BANKER'S DRAFT

80 High Street, Eltham, SE9

HACKNEY

THE ROCHESTER CASTLE

145 High Street, Stoke Newington, N16

HAMMERSMITH

THE MOON ON THE GREEN

172-174 Uxbridge Road, Shepherd's Bush, W12

HARINGEY

THE OLD SUFFOLK PUNCH

10-12 Grand Parade, Green Lanes, Harringay, N4

THE NEW MOON

413 Lordship Lane, Tottenham, N17

THE ELBOW ROOM

503-505 High Road, Tottenham, N17

THE TOLL GATE

26-30 Turnpike Lane, Hoxsey, N8

THE ELBOW ROOM

22 Topsfield Parade, Tottenham Lane, Crouch End, N8

THE GATE HOUSE

1 North Hill, Highgate, N6

HARROW

J J MOON'S

3 Shaftesbury Parade, Shaftesbury Circle, South Harrow

THE MOON ON THE HILL

373-375 Station Road, Harrow

THE NEW MOON

25-26 Kenton Park Parade, Kenton Road, Harrow

THE MOON AND SIXPENCE

250 Uxbridge Road, Pinner

THE SARSEN STONE

32 High Street, Wealdstone

J J MOON'S

20 The Broadway, Pinner Road, North Harrow

THE VILLAGE INN

402-408 Mayners Lane, Pinner

THE MAN IN THE MOON
1 Buckingham Parade, Stanmore

HAVERING

J J MOON'S

46-62 High Street, Hornchurch

THE MOON AND STARS

99-103 South Street, Romford

HILLINGDON

J J MOON'S

12 Victoria Road, Ruislip Manor

THE MOON UNDER WATER

10-11 Broadway Parade, Coldharbour Lane, Hayes

J J MOON'S

Terminal Four, (Airside), Heathrow Airport, Hounslow

WETHERSPOONS

Terminal Four, (Landside), Heathrow Airport, Hounslow

THE MOON AND SIXPENCE

1250-1256 Uxbridge Road, Hayes End

THE SYLVAN MOON

27 Green Lane, Northwood

THE GOOD YARN

132 High Street, Uxbridge

SPOONS

OPEN

- **Wetherspoons**, Aberconway Road, Morden
- **Wetherspoons**, 552-556 London Road, North Cheam
- **Wetherspoons**, 78-92 Foregate Street, Chester
- **Wetherspoons**, 20 Lord Street, Southport

SOON

- 20 High Street, Southampton
- 98-101 George Street, Hove, East Sussex
- **Wetherspoons**, Piccadilly, Manchester
- 1/15 Market Square, Basildon
- 17 St Peters Hill / 28 Catherines Road, Grantham
- 8-9 High Street, Maidstone, Kent
- 38-40 Regent Street, Swindon
- 80-84 Chase Side, Southgate
- 2-10 Queensway, Bognor Regis
- 2-8 High Street, Staines

() when accompanied by an adult and only when food is ordered.*

HOUNSLOW

THE MOON UNDER WATER
84-86 Staines Road, Hounslow

JJ MOON'S

80-82 Chiswick High Road, Chiswick W4

THE MOON ON THE SQUARE
Unit 30, The Centre, Feltham

ISLINGTON

THE DOG
17-19 Archway Road, Archway N19

179 UPPER STREET
179 Upper Street, Islington N1

THE WHITE LION OF MORTIMER
175-127 Stroud Green Road, Stroud Green N4

THE MASQUE HAUNT
168-172 Old Street, EC2

LAMBETH

THE CROWN AND SCEPTRE
2a Streatham Hill, SW2

THE BEEHIVE
407-409 Brixton Road, Brixton SW9

LEWISHAM

THE TIGER'S HEAD
350 Bromley Road, Catford SE6

THE BIRD IN HAND
35 Dartmouth Road, Forest Hill SE23

CITY OF LONDON

THE HAMILTON HALL
Liverpool Street Station EC2

MERTON

THE WHITE LION OF MORTIMER
223 London Road, Mitcham

NEWHAM

THE MILLER'S WELL
419-421 Barking Road, East Ham, E6

THE GOLDENGROVE

146-148 The Grove, Stratford E15

REDBRIDGE

THE NEW FAIRLOP OAK
Fence Piece Road, Barkingside

THE GEORGE

High Street, Wanstead E11
THE GREAT SPOON OF ILFORD
114-116 Cranbrook Road, Ilford

RICHMOND UPON THAMES

THE MOON UNDER WATER
53-57 London Road, Twickenham

SOUTHWARK

***THE FOX ON THE HILL**
149 Denmark Hill, SE5

SUTTON

THE WHISPERING MOON
25 Ross Parade, Woodcote Road, Wallington

THE MOON ON THE HILL
5-9 Hill Road, Sutton

TOWER HAMLETS

THE CAMDEN'S HEAD
456 Bethnal Green Road, Bethnal Green E2

WALTHAM FOREST

THE DRUM
557-559 Lea Bridge Road, Leyton E10

WANDSWORTH

JJ MOON'S
56a High Street, Tooting SW17

THE MOON UNDER WATER
194 Balham High Road, Balham SW12

THE SPOTTED DOG
72 Garratt Lane, Arncliffe Centre, Wandsworth SW18

THE RAILWAY
202 Upper Richmond Road, Putney, SW15

THE GRID INN
22 Replingham Road, Southfields, SW18

WESTMINSTER

THE MOON UNDER WATER
28 Leicester Square, WC2

WETHERSPOONS
Victoria Station, SW1

THE MOON AND SIXPENCE
185 Wardour Street, W1

BERKSHIRE

***THE OLD MANOR**
Church Road, Bracknell

THE MONKS' RETREAT
163 Friar Street, Reading

BIRMINGHAM

THE SQUARE PEG
Units 1, 2 & 3 Temple Court, 115 Corporation Street

BUCKINGHAMSHIRE

THE LAST POST
77 The Broadway, Chesham

THE FALCON
9 Commarket, High Wycombe

DORSET

THE MOON IN THE SQUARE
4-8 Exeter Road, The Square, Bournemouth

ESSEX

THE ELMS
1060 London Road, Leigh-on-Sea

THE LAST POST
Weston Road, Southend-on-sea

THE PLAYHOUSE
4 St. John's Street, Colchester

HEREFORD AND WORCESTER

THE GOLDEN CROSS HOTEL
20 High Street, Bromsgrove

HERTFORDSHIRE

THE HART AND SPOOL
148 Shenley Road, Borehamwood

THE MOON UNDER WATER
44, High Street, Watford

KENT

THE PAPER MOON
55 High Street, Dartford

THE SOVEREIGN OF THE SEAS
109-111 Queensway, Petts Wood

NORFOLK

THE BELL HOTEL
5 Orford Hill, Norwich

SURREY

THE REGENT
19 Church Street, Walton-on Thames

WETHERSPOONS
51-57 Chertsey Road, Woking

SUSSEX

THE RED LION
North Terminal, International Departures Lounge,
Gatwick Airport

WOLVERHAMPTON

THE MOON UNDER WATER
53-55 Lichfield Street, Wolverhampton

FORTHCOMING FESTIVALS

4-7 Oct	Bedford Corn Exchange St Paul's Square Bedford
5-7 Oct	Guernsey Friquet Butterfly Centre Castel Guernsey
12-14 Oct	Reading TUC Club Chatham Street Reading
14 Oct	Kent Cider & Perry Exhibition Museum of Kent Life Cobtree, Lock Lane Sandling, Nr Maidstone
19-21 Oct	Croydon Ruskin House Club 23 Coombe Road Croydon
20-21 Oct	Trafalgar Day Celebration St Lukes Hall Overton
23-28 Oct	Norwich St Andrews & Blackfriars Halls Norwich City Centre
26-28 Oct	Swindon New College Frobisher Drive Swindon
27-28 Oct	Bath The Pavilion North Parade Road Bath
9-11 Nov	Jersey Inn On The Park St Helier Jersey
10-11 Nov	Woking Woking Leisure Centre Working Park <i>(strictly by ticket only see details elsewhere in this issue)</i>
28 Nov-2 Dec	Pigs Ear Old Town Hall Stratford E15

EAST END NEWS

What have the Kent, Essex, North and South East London and Good Beer Guides got in common? Other than they are fairly new. Alternatively what have the East London & City, South West and West London beer guides got in common? Other than they are fairly old. The old guides list the owning brewery whereas the new ones don't. That is except Essex where only the keg pub owning brewery is shown. Strangely the London Drinker updates mention where a pub has changed hands. Logical? Come in Mr Spock, your answer awaits.

Changes this month are: E1: Current range at the Alma is London Pride (140p), Youngs Bitter and Special. Castle subtitled Doyles Corner and now a free house. Horns & Horseshoe closed and for sale but nearby on the corner of Dock Street and Royal Mint Street is Dock & Co advertising themselves as a Pub, Cocktail Bar and Grill. Roebuck demolished. The Water Poet, new Adnams tied pub on the corner of Stoney Lane and White Kennett Street. Open from 9am to 11pm Monday-Friday and also open Sunday lunchtime. E2: If you fancy a drink at 8am on Sunday morning then try the Carpenters Arms. They had London Pride at 1.75p a pint and pumps and clips for West County Ale and Flowers IPA but neither were on sale on my visit. Septembers, closed and for sale. E3: John Bull, now closed with brewery and pub names removed and to let as retail premises. Widows Son now sells Tetley following a refurbishment. Palm Tree, range now Flowers IPA and Boddingtons. Victoria, sells Fargo and Bombardier alongside Eagle. E6: Cock closed and fire damaged. E9: Alexandra, recently painted but closed and to let. Bedford, advertising Highgate Dark at 1.20p a pint. Stag, closed. Lord Nelson converted to a house. Bridge House Tavern, re-opened and re-named Roundhouse and appears keg. Welsh Harp, for sale like most other Shepherd Neame pubs in East London. E16: My Barking spy sent me a cutting from the local rag informing us of a change of use of the Flying Scud converting to flats. E17: Couples, advertised as a restaurant and bar as well as a free house.

The Magpie (EC2) is currently undergoing a Nicholson's refurbishment.

Keith Emmerson

LONDON BEER GUIDES UPDATE 107

This month the main event is the opening of two brew pubs in London by Grosvenor Inns now with David Bruce (of Firkin fame) as one of the directors. The pubs, branded "Hedgehog & Hogshead" are in N1 Islington and Sutton. In addition we record a number of pubs and bars converted from shops, restaurants and banks including Fullers first Irish theme pub in SW15 Putney, a further Regent Inns Free House in SW19 Wimbledon and a new Free House in NW1 Camden Town. Further Irish theme pub conversions include one from S&N in SW7 South Kensington and another from Bass in Sutton. More Wychwood pubs have been discovered as they come up for refurbishment. The removal of real ale from Sam Smith pubs continues. The listings also include any additions, deletions or major changes emerging from the new North London guide not already recorded in the Updates. The Updates will cross refer to the new guide from next month. Finally, we complete the listings of pubs transferred from Grand Met to Scottish & Newcastle.

The numbers in brackets after each entry refer to the page number in the following guides: E – East London & City Beer Guide, 3rd edition; K – 'Real Ale Drinkers Guide to Kent Pubs', 8th edition; N – North London Beer Guide, 2nd edition; SE – South East London Pub Guide, 4th edition; 3SE – South East London Pub Guide, 3rd edition; SW – Real Beer in South West London; W – Real Beer in West London; X – Essex Beer Guide, 8th edition. U refers to earlier updates. # indicates a guest beer.

If you would like to report changes to pubs or beers please write to: Beer Guides Updates, 2 Sandtoft Road, London SE7 7LR.

NEW & REOPENED PUBS & PUBS CONVERTED TO REAL ALE

CENTRAL

EC1, MORGANS DINER/OCEANS, 55-63 Goswell Road, reopened and renamed **CLOAK & HABIT**. Greene King: IPA, Sorcerer, Abbot Ale, Young: Bitter. Omitted from E guide for unknown reasons. (U44, U54, U70, U92)

W1(S), BRASSERIE NORMAN, 18/20 Ganton Street. No real ale. A new bar brasserie in former shop premises operated by Regent Inns.

WC1, DUKE OF WELLINGTON, 5 Whidborne Street. Renamed **McGARVEYS**. Charrington: IPA. Wadworth: IPA (house beer). (N15, W46, U53)

WC1, KINGSLEY HOTEL, Bloomsbury Way. Bass (N16, W47, U81)

NORTH

N1, ALMA, 59 Newington Green Road, Worthington: Best Bitter. (N45, U52, U88)

N1, CHARLIE WRIGHTS, 45 Pitfield Street. Courage: Best Bitter, Directors Bitter. Formerly **QUEENS HEAD**. (N40, U45, U76, U89)

N1, EDINBURGH, 125 Newington Green Road. John Smith: Bitter. (N45)

N1, PURPLE TURTLE BAR, 108 Essex Road. No real ale. A Free House in former restaurant premises.

N1, QUEENS ARMS, 29a Penton Street. Ruddie: Best Bitter. (N46)

N1, WILLIAM IV, 7 Shepherdess Walk. Charrington: IPA. (N46)

N2, BALDWIN'S CAFE BAR, Fortis Green Road. Wells: Bombardier. A Free House/cafe bar with occasional art exhibitions and live music.

N2, HOWARDS WAY, 133 High Road. No real ale. A Free House in former shop premises.

N3, OLIVERS, 168 Ballards Lane. Courage: Directors Bitter. Tetley: Bitter. House beer. (U77)

N4, BECHERS, 89 Woodberry Grove John Smith: Bitter. (N53, U98)

N4, MEETING PLACE, 17 Blackstock Road. No real ale. A Free House in former shop premises.

N4, OSBORNE TAVERN, 106 Stroud Green Road. Webster: Yorkshire Bitter. (N52, U88)

N4, PLIMSOLL ARMS, 52 St. Thomas's Road. Tetley: Bitter. (N53)

N4, SALISBURY, 1 Grand Parade, Green Lanes. John Smith: Bitter. (N52, U83)

N5, DRAYTON PARK, 66 Drayton Park. Courage: Best Bitter. (N56, U43)

N7, NAGS HEAD, 456 Holloway Road. Bass. Fuller: London Pride, Hancock: HB. (N69)

N7, ST. GEORGES THEATRE BAR, 49 Tufnell Park Road. No

real ale. Free House, (omitted from previous N guide)

N9, FILLING STATION BAR & GRILLE, Picketts Lock Leisure Centre, UCI Cinema Complex, Meridian Way. No real ale. A Whitbread bar.

N9, TOWN CRIER, 264 Town Road. Boddington: Bitter. Flowers: Original Bitter. (N76)

N11, GROVE, 2 Friern Barnet Lane. John Smith: Bitter. (N79, U77)

N16, ALBION, 2 Clissold Road. Marston: Pedigree. Tetley: Bitter. Now a Free House, ex Taylor Walker, formerly **GOLDEN LADY**. (N94, U33, U87)

N16, HORSE & GROOM, 105 Stoke Newington Church Street. Renamed **OLD SHILLELAGH**. Now Ascot Estates, ex Belhaven. (N94, U39)

N16, RYANS, 181 Stoke Newington Church Street. Courage: Directors Bitter. Webster: Green Label. A Free House in former restaurant premises.

N16, VICTORIA, 35 Stoke Newington High Street. Gibbs Mew: Wiltshire Bitter. Now a Free House, ex Taylor Walker. Beware Scrumpy Jack on false handpump. (N94, U42, U88)

N17, PARK HOTEL, 220 Park Lane. Flowers: IPA. (N98)

N17, PLOUGH, 474 High Road. John Smith: Bitter. (N97, U88, U106)

N17, THREE COMPASSES, Queen Street. Whitbread: WCPA. (N98)

N17, WHITEHALL TAVERN, 759 High Road. Tetley: Bitter. (N98, U45)

N20, JO JO BALOUS, 1267 High Road. Fuller: London Pride. (U77)

N22, HENLEYS BAR, 101 Myddleton Road. Courage: Best Bitter. Ruddie: County. Webster: Yorkshire Bitter. (U43)

NEW BARNET, GREEDY GRAPE, 3 Victoria Road. Renamed **DEN**. Boddington: Bitter. (U91)

ENFIELD, GREYHOUND, 425 Ordnance Road, Enfield Lock. McMullen: AK. Country Bitter. Gladstone Bitter. (N190)

ENFIELD, PLOUGH INN, 105 Turkey Street. Boddington: Bitter. Fuller: London Pride. (N186, U77)

ENFIELD, RAILWAY INN, 229 Ordnance Road, Enfield Lock. Boddington: Bitter. Morland: Old Speckled Hen. (N186, U77)

ENFIELD, RIFLES, Ordnance Road, Enfield Lock. Tetley: Bitter. (N190)

ENFIELD, WHEATSHEAF, 185 Baker Street, Chase Side. Wells: Eagle Bitter, Bombardier. (N190, U63)

NORTH WEST

NW1, COBDEN ARMS, Camden High Street. Boddington: Bitter. Flowers: IPA. Fuller: London Pride. Marston: Pedigree. A new Free House, shop conversion

NW1, DRUMMONDS, 73-77 Euston Road. Bass. Hancock: HB. Worthington: Best Bitter. Formerly **EUSTON TAVERN**. Omitted from previous N guide. (U39)

BEER BRIEFING
LONDON BEER GUIDES UPDATE 107 continued

NW2, CRICKLEWOOD HOTEL, 301 Cricklewood Broadway. Ind Coope: Burton Ale. Tetley: Bitter. (N130, U88)

NW3, CASTROS, 194 Havestock Hill. No real ale. A Free House in former shop premises.

NW3, MARKET BAR, 79 Heath Street. Reopened and renamed **NACHOS**. Still fizz, formerly NAGS HEAD. (N136, U67)

NW4, HICCUPS, 5 Vivian Avenue. No real ale. A Free House in former shop premises.

NW4, POTCHEEN STILL, Hendon Way. No real ale. A Free House.

NW5, ASSEMBLY HOUSE, 292 Kentish Town Road. Renamed **FAMOUS ASSEMBLY HOUSE**. Bass. (N143, U88, U98)

NW5, OLD FARM HOUSE, 289 Kentish Town Road. Renamed **DOLLY FOSSETTS WINE BAR**. Adnams: Broadside. Marston: Pedigree. Webster: Yorkshire Bitter. (N146)

NW6, CALCOTTS TAVERN, 18 Willesden Lane. No real ale. A Free House in former shop premises.

NW6, PRIORY TAVERN, 250 Belsize Road. Courage: Best Bitter. (N150)

NW7, JEREMIAH BULLFROGS, 655 Watford Way, Northways Circus. No real ale. A Free House in former shop premises.

NW8, DUKE OF YORK, 2-4 Gateforth Street. John Smith: Bitter. (N156, U82, U88, U106)

NW8, EXETER ARMS (BEER ENGINE), 9 Ashbridge Street. Boddington: Bitter. Fuller: London Pride. (N157, U88)

NW9, ERINS HOPE, 189 Edgware Road. No real ale. A Free House in former shop premises.

NW9, WISHING WELL, 175 Church Lane. No real ale. A Free House in former shop premises.

NW10, BANKERS DRAUGHT, 83 Chamberlayne Road. No real ale. A Free House in former bank premises.

NW10, BRENNANS BAR, 228 High Street, Harlesden. No real ale. A Free House in former commercial premises.

NW10, BURREN, 174 Church Road, Courage: Best Bitter. A one bar Free House in former restaurant premises.

NW10, CROWN, 34 High Street, Harlesden. Renamed **RAT & CARROT (CROWN)**. Bass. Morland: Old Speckled Hen. Webster: Green Label. (N162, U88, U98)

NW10, EXCELSIOR WINE BAR, 210 High Street, Harlesden. No real ale. A Free House in former shop premises.

NW10, FINNIGANS WAKE, 273 Neasden Lane. No real ale. A Free House in former restaurant premises.

NW10, GIGI'S BAR, Willesden Green Library, High Road, Willesden. No real ale. A Free House in former library.

NW10, KEATS FREE HOUSE & NIGHTCLUB, 19 Abbey Road, Courage: Best Bitter. John Smith: Bitter. Wadworth: 6X. Beware Scrumpy Jack on false handpumps. Good foreign beer selection.

NW10, MCGOWANS, High Road, Willesden. No real ale. A Free House.

NW10, MAGGIES, Chamberlayne Road. No real ale. A Free House.

NW10, MASONS ARMS, 665 Harrow Road, Tetley: Bitter. Young: Bitter. (N164)

NW10, RISING SUN, 25 Harlesden Road. John Smith: Bitter. (N163, U37, U39, U106)

EDGWARE, BLARNEYS FREE HOUSE, 128 Burnt Oak Broadway. No real ale. A Free House.

SOUTH WEST

SW4, CLARENCE, 34 Jeffreys Road. Courage: Best Bitter (SW24)

SW4, DUKE OF YORK, 184 Larkhall Lane. Flowers: IPA. Ruddle: Best Bitter. Guest beers. (SW24, U34)

SW4, FALCON, 33 Bedford Road. Bass. Fuller: London Pride. (SW24, U39)

SW4, LARKHALL TAVERN, 96 Larkhall Lane. Bass: Toby Cask. (SW24, U39)

SW4, SPRINGFIELD TAVERN, 48 Kepler Road. Ruddle: Best Bitter. (SW25)

SW11, BRITISH FLAG, 103 Culvert Road. No real ale. Reopened as a Free House, ex Grand Met (Watney). (SW39, U39, U71)

SW11, EARL SPENCER, 37 Battersea Bridge Road. John Smith: Bitter. Now operated by Phoenix Inns, ex Grand Met (Watney). (SW39, U39)

SW15, P SHANNON & SONS, 46-48 Putney High Street. Fuller: Chiswick Bitter, London Pride, ESB. A new Fullers pub in former bank premises and Fullers first Irish theme pub. Patrick Shannon was apparently an Irishman from Carlow who had opened a grocery shop in Putney in the 1920's. Bare floorboards, alcoves, decorative screens and wooden slatted tables complete the scene. Glass fronted cabinets contain items of Irish paraphernalia. Open all permitted hours (including Sundays).

SW16, PARK TAVERN, 118 Mitcham Lane. Courage: Best Bitter. Real ale not always available. Now Intntrepreneur, ex Watney. (SW48, U39)

SW17, MAYFAIR TAVERN, Upper Tooting Road. Theakston: Best Bitter. (SW50, U32, U36, U98)

SW17, ROSE & CROWN, 140 Tooting Bec Road. Boddington: Bitter. Flowers: Original Bitter. Marston: Pedigree. Young: Special. (SW50, U28, U40, U56)

SW19, CHUMLEYS, 74-78 The Broadway. Boddington: Bitter. Brakspear: Bitter. Chumleys: Ale (house bitter, probably Hancock: HB). 2 Guest beers (at £2 a pint) currently Adnams: Extra & Young: Special. New Regent Inns Free House in former shop and restaurant premises. L shaped room forming two distinct areas. Front bar with wicker chairs, bar stools; rear area with armchairs, tables and chairs. Tastefully decorated with pictures, dusty books and stained glass. Newspapers and Sky TV. Food available until 9pm (8pm Sundays). Over 21's only after 5pm. Open all permitted hours.

SW19, JENNY LIND, 90 Inner Park Road. Ruddle: County. Young: Bitter. Now a Free House, ex Grand Met (Watney). (SW56, U56)

SUTTON, HEDGEHOG & HOGSHEAD, 2 High Street. Belchers: Original (3.8%), Best Bitter (4.2%), Overdraught (5.0%). Guest beers (currently Courage: Directors Bitter and John Smith: Bitter). New Grosvenor Inns "Belchers" brew pub in former commercial premises. Long bar with stairs to raised area at rear and brewery viewed through glass panels to side. Bar floors, bench seats and ceiling fans reflect the David Bruce influence. Open all permitted hours. Food daytime. Beers believed to be kept in cellar tanks at atmospheric pressure.

PUBS CLOSED OR CEASED SELLING REAL ALE

CENTRAL

W1(S), GLASSHOUSE STORES. Samuel Smith, H removed. (W42, U54, U61)

NORTH

N1, ADMIRAL KEPPEL. United breweries (formerly Wiltshire). No real ale.

N1, BELL. Charrington. renamed **CROSSBAR**. No real ale. (N28, U58)

N1, MITRE, 183 Copenhagen Street. Charrington. No real ale. N46, U68)

N1, PRINCE OF WALES. 1a Sudeley Street. Now a Free House, ex Taylor Walker. No real ale.

N1, RYDONS. Free House, closed. (N41, U86)

N1, SIR ROBERT PEEL. Charrington, closed, for sale. (N43)

N1, VICTORY. Grand Met (Watney). No real ale. (N44)

N5, GUNNERS. Now a Free House, ex Grand Met (Watney). No real ale. (N56, U88)

N7, HALF MOON. Taylor Walker, closed. (N69)

N7, LAMB TAVERN. Renamed **GIN PALACE**. Grand Met (Courage), closed. (N69, U87)

N7, NEW COPENHAGEN. Renamed **ROSIE McCANNIS**. Grand Met (Truman), H unused. (N66)

N9, BRITANNIA. Taylor Walker. No real ale. (N74)

N11, NORTHERN STAR. Now run by Local Image Ltd, ex Taylor Walker. No real ale. (N79)

N11, SIR JOHN LAWRENCE. Renamed **GAELIC GROUNDS**. Whitbread. No real ale. (N80, U81)

N15, DUKE OF CAMBRIDGE. Taylor Walker. No real ale. (N87)

N16, NEW PEGASUS. Grand Met (Courage), closed, for sale. Formerly CHAS'N'DAVES. (N92, U55)

N16, MOLLY MALONES. Now a Free House, ex Belhaven, H unused. Formerly EBOR ARMS. (N92, U42, U47, U87)

RICHMOND & HOUNSLOW NEWS

A planning application by Fullers to demolish the Queen Victoria in Bath Road, Hounslow has been rejected by London Borough of Hounslow planning committee. The grounds for refusal was loss of building character and community facility. This is a success for the action group formed by locals who raised a petition after Fullers announced their plans to develop the site. Fullers are likely to appeal against the decision.

Elsewhere in Hounslow, Ushers have taken over the Royal Albion in Hibernia Road and the Queens Arms (formerly the Greyhound) in Hanworth Road. Currently the former has Ushers' latest Four Seasons Ale, i.e. Summer, at £1.00 a pint. The takeover at the Queens Arms, a gay bar, has meant a reduction in the range of beers available. The Sun in Hanworth Road appears now to be an Irish themed pub which when visited recently had only Whitbread keg beers, the pump clips for Boddington's Bitter and Morland's Old Speckled Hen having been turned around. The Rifleman, also in Hanworth Road, has won an award from Bass Charrington for the best mild, Highgate Dark, in the region while the Windmill in Bell Road is selling Bateman's Mild for a short period.

On a recent survey trip to SW13 we found the Old Rangoon, aka Boileau Hotel/Arms has changed to the Garden House, despite concerted efforts by local residents to retain the historical name which were reported at some length in the local press. This huge pub, now owned by Bass (formerly Courage), was refurbished in March and is similar to the "All Bar One" concept although it retains sufficient individuality to have its own identity. The beers on sale during our visit were Adnams Bitter and Morland's Old Speckled Hen, the Bass clip having been turned round. The "largest garden in west London" boasts a daily barbecue and an extensive menu. There are a number of separate drinking areas and disabled customers are made welcome with a disabled loo and ramp access at the rear.

Charles and June of the Dysarts in Petersham are moving to the Railway Hotel in Teddington. We wish them all the best with their move.

Finally, by the time you read this the

Feltham Beer Festival will be well and truly over. Thanks to all those who worked at and attended the festival or attended as customers.

Doug Scott

PS

Did any of our readers spot the piece in the Richmond & Twickenham Times following the Branch's do at the White Hart in Hampton on 2nd September for CAMRA's Full Measure Day of Action. I'm not sure if it was a deliberate comment by the paper about our illustrious chairman's slightly chubby stature, but I think it was unkind of them to say that the 1995 Full Pint Award was handed to landlady Nikki Macintosh by Dough Scott.

Andy Pirson

FIRST HOBGOBLIN PUB IN LONDON OPENS

Thursday the 7th of September saw the opening of Londons first Hobgoblin pub. The pub was formerly known as the Rose of Lee and was bought by the Wychwood brewery as part of the Hennellys chain. It is situated in Lee High Road, just outside of Lewisham town centre in south-east London.

Shires, Wychwood Best, Fiddlers Elbow and Dogs Bollocks are normally available together with a guest beer, which was Ringwood Old Thumper on the opening night. The large pub has a raised area at the rear for live bands etc, and is clearly targeted at the younger end of the market, with decor reminiscent of a Firkin pub.

Licensee Anthony Coffey said "The reburishment was completed in record time and it was touch and go as to whether or not we would open in time, although we managed OK in the end, and a lot of CAMRA members took up our offer of free beer in return for wearing a Wychwood T-Shirt!"

South-East London CAMRA chairman Andrew Padgham said "This is a welcome change for a pub which previously only occasionally sold real ale. It also brings the choice of independently brewed beer in an area known for its poor quality and range of real ales."

Wychwood now intend to refurbish the George Canning at 95 Effra Road, SW2, and then the Pic & Kilderkin, Forest Hill, SE23.

GALES

WINE MERCHANTS

Purveyor of award winning cask ales, bottled beers and porters, traditional cider and perry

present

AUTUMN MADNESS

**10%* off all Bottled Beers, Cider & Perry and
Cask Ales (4 pint takeouts, Polypins & Barrels)**

WANT A POLYPIN OR BARREL OF YOUR
FAVOURITE ALE ? - NO PROBLEM, WE HAVE A
HUGE CHOICE. JUST PHONE FOR DETAILS.
WE CAN ALSO DELIVER.



COOLED CASK CONDITIONED ALES PLUS
TRADITIONAL CIDER ALWAYS AVAILABLE
TO TAKE HOME IN 2 & 4 PINT FLAGONS



LARGE CHOICE OF BRITISH, GERMAN AND
BELGIAN BOTTLED BEERS



Gales Wine Merchants
204 High Road, Woodford Green,
Essex. Telephone 0181 504 9347



**Discount only applies to cash or cheque sales
credit cards tolerated - but no discount*

BEER BRIEFING
LONDON BEER GUIDES UPDATE 107 continued

N16, MONARCH. Free House (Labatts). H unused. (N92, U100)
N16, SAMUEL BECKETT. Renamed **CAFE LORCA.** Now Saxon Inns, ex Whitbread. No real ale. Formerly THREE CROWNS. (N95, U39, U73)

N17, CITY ARMS. Taylor Walker. No real ale. (N96)

N17, CHEQUERS. Charrington. No real ale. (N97)

N17, OLIVE BRANCH. Now a Free House, ex Grand Met (Courage), closed. (N97)

N18, GLOBE. Grand Met (Watney). No real ale. (N99)

N22, DUKE OF EDINBURGH. Charrington. H unused. (N108)

N22, FISHMONGERS ARMS. Now a Free House, ex Grand Met (Watney). No real ale. (N110, U88)

N22, WELCOME INN. Free House. No real ale. Formerly LORDS. (U43, U52, U64, U87)

BARNET, DANDY LION. Benskins. No real ale. (N167)

ENFIELD, HORSE & DRAY. Whitbread. No real ale. (N190, U77)

ENFIELD, TURKEY. Charrington. No real ale. (N189)

NORTH WEST

NW1, ELIZA DOOLITTLE. Taylor Walker, closed. (N117)

NW1, MONARCH. Charrington. No real ale. (N122)

NW1, PHOENIX. Grand Met (Watney)/Intreprenuer. No real ale. (N124)

NW1, VICTORIA, 37 Charlton Street. Now a Free House, ex Whitbread, closed. (N127)

NW2, RED LION. Free House (Magic), closed. (N131, U98)

NW5, TORRIANO. Grand Met (Truman), closed. (N146, U88)

NW5, ROSE OF ENGLAND. Free House, closed (N146)

NW9, PLOUGH. Taylor Walker. No real ale. (N161, U39, U87)

NW10, ABBEY. Free House (Labatts), closed. (N162, U98)

NW10, WILLIAM IV. Grand Met (Courage). No real ale. (N164, U87)

SOUTH EAST

SE20, ANERLEY ARMS. Samuel Smith, H removed. (SE187)

OTHER CHANGES TO PUBS & BEER RANGES

NORTH

N1, COCK TAVERN. Renamed **HEDGEHOG & HOGSHEAD.** -Beers listed. +Belchers: Original (3.8%), Best Bitter (4.2%). +Courage: Directors Bitter. +Wadworth: 6X. Converted by Grosvenor Inns into a brew pub showing more than a passing resemblance to the Firkin chain, reflecting the David Bruce involvement. Bare boards, bench seating and ceiling fans predominate. The brewery can be viewed through glass panels at the rear. Breweriana decorates the walls including a Bass Kings Ale bottle from the turn of the century. Beer believed to be kept in cellar tanks at atmospheric pressure. Food until 9pm. Open all permitted hours. (N30, U89, U99)

N1, DRAPERS ARMS. Renamed **OLD HUNGRY HORSE.** (N31, U74, U98)

N1, FALLEN ANGEL. Renamed **ANGEL CAFE BAR.** (N33)

N1, FERGIES. Reverted to **GREYHOUND**, still fizz. (N45)

N1, GREEN MAN, 144a Essex Road. Now a Free House, ex Grand Met (Courage), still fizz. (N45)

N1, HARE & HOUNDS. Renamed **MEDICINE BAR.** (N34)

N1, LORD RAGLAN. Renamed **ARTFUL DODGER**, still fizz. (N45)

N1, MERRY MONARCH. Renamed **MONARCH.** Now a Free House, ex Whitbread, still fizz. (N46)

N1, PRINCE ALBERT, 16 Elia Street. Now a Free House, ex Charrington. (N40)

N1, REGENTS (OF ISLINGTON). Renamed **NOLIA'S CAFE BAR.** Now a Free House, ex Grand Met (Courage). Originally PRINCE REGENT. (N40, U53, U87)

N3, MUSWELLS. Renamed **TAYLORS**, still fizz. (N50)

N4, STAPLETON HALL TAVERN. Renamed **DANZIBAR**, still fizz. (N53)

N7, FAT HARRYS. Free House reverted to Taylor Walker. (N64)

N11, PATTEENS. Renamed **LEITRIM INN**, still fizz. (U101)

N15, HOBSONS CHOICE. Renamed **BOTANY BAY.** (N88, U98)

N16, MARLERS BAR. Reverted to **COACH & HORSES.** -Beers

listed. +Bass. +Flowers: Original Bitter. +Tetley: Bitter. (N92)

N22, MOON UNDER WATER. Renamed **POACHERS.** (U36, U52, U70)

ENFIELD, CHIMES. Reverted to **BELL (HOTSHOTS).** (N190)

NORTH WEST

NW1, BAR ROYALE. Renamed **ROYALES**, still fizz. Formerly BRIGHTON. (N129, U67)

NW1, BUCKS HEAD. Renamed **HARVEY FLOORBANGERS.**

-Beers listed. +Brakspear: Bitter. +Bucks: Best Bitter (house beer).

+Courage: Best Bitter. Now a Regent Inns Free House, ex Grand Met (Truman). Refurbished in typical style. Food all day. (N115)

NW1, HENNELLYS. -Webster: Yorkshire Bitter. +Courage: Best Bitter. +Wychwood: Best Bitter. Now a Wychwood pub, leased from Grand Met (Truman). Formerly leased to Hennellys.

Wychwood beers may vary. (N124, U87)

NW2, GLADSTONES. Renamed **BRENT TAVERN**, still fizz. (U69)

NW3, DUKE OF HAMILTON. -Beers listed. +Fuller: Chiswick Bitter, London Pride, ESB. Now a Free House, ex Grand Met (Watney). (N134, U56)

NW3, ROSSLYN ARMS. Renamed **BAR ROOM BAR.** -Beers listed. +Fuller: London Pride. +Guest beer. (N138)

NW5, WOLSEY TAVERN. Renamed **BOOK & CANDLE.** (N146, U87)

NW9, SURREY ARMS. Renamed **GLEN FIRESIDE ROOMS**, still fizz. (N161)

NW10, FIRST RESORT. Renamed **ANGIES IV**, still fizz. (U57, U88)

NW10, STONEBRIDGE PARK HOTEL. Renamed **HENNELLYS.** Now a Hennellys Free House, ex Grand Met (Watney). still fizz. (N164)

EDGWARE, BALD EAGLES WINE BAR. Renamed **SMUGGLERS COVE**, still fizz. (N178)

SOUTH EAST

SE13, ROSE OF LEE. Renamed **HOBGOBLIN.** -Courage: Best Bitter. +Wychwood: Shires (3.4%), Best (4.2%), Dogs Bollocks (6.5%). +Guest beer. Beers may vary. Now a Wychwood pub, formerly Grand Met (Watney), latterly leased to the Hennelly chain. (SE122, U102)

SOUTH WEST

SW2, GEORGE CANNING. Renamed **HOBGOBLIN.** -Webster: Yorkshire Bitter. +Courage: Best Bitter. +Wychwood: Shires (3.4%), Fiddlers Elbow (4.0%), Best (4.2%). Now a Wychwood pub, ex Grand Met (Watney), formerly leased to Hennelly Taverns. Beers may vary. (SW19)

SW7, GLOUCESTER ARMS. Renamed **FINNEGANS WAKE.** -Beers listed. +Theakston: Best Bitter, XB. Yet another Irish theme pub, this time from Scottish & Newcastle. Bare polished floors, benches, wooden tables and alcoves. Hurling sticks and other Irish related bric-a-brac decorate the walls. Open all permitted hours. Formerly Watney. (SW31, U88, U107 below)

SW17, TOOTING TAVERN. Renamed **FREEDOM & FIRKIN.** -Beers listed. +Firkin: Full Mash Mild (3.4%), Citizen (3.5%), Freedom (4.3%), Golden Glory (5.0%), Dogbolter (6.0%). Latest Taylor Walker "Firkinisation" with pews, benches, ceiling fans etc. Walls decorated with the usual breweriana interspersed with "Citizen Smith Tooting Popular front" images. Beers supplied from other Firkin pub breweries. Food. Open all permitted hours. (SW50, U36)

MORDEN, MORDEN TAVERN. +Courage: Best Bitter. +Wychwood: Best Bitter, Hobgoblin. Now a Wychwood pub, ex Grand Met (Truman), latterly leased to the Hennellys chain. (SW70, U34, U50, U57)

SUTTON, GREEN MAN. Renamed **O'NEILLS.** -Charrington: IPA. -Fuller: ESB. +Fuller: London Pride. Converted as an Irish theme pub. (SW76, U43)

WEST

W4, ROEBUCK. Renamed again to **RAT & PARROT.** -Courage: Best Bitter. +Theakston: Best Bitter, XB. +Wadworth: 6X. Refurbished in typical "Rat & Parrot" style. Now S&N, ex Grand Met (Truman). Formerly CHISWICK EYOT. (W68, U61, U85, U94, U107 below)

PUBS ACQUIRED BY SCOTTISH & NEWCASTLE

SOUTH EAST

SE1, FLORENCE NIGHTINGALE. Courage (SE16)

MCMULLEN ANNOUNCES SPECIAL RESERVE NUMBER EIGHT FOR BREWERY MONTH

Strong Russet Ale has a touch of honey

McMullen announced Strong Russet Ale, the eighth McMullen Special Reserve limited edition seasonal ale in the series, which has won for Head Brewer Tony Skipper, the title, UK Brewer of the Year.

To add an extra local flavour into this latest Special Reserve, Tony has included a measure of pure Hertfordshire honey in the recipe.

Strong Russet Ale is also McMullen's contribution to Brewery Month, organised by the Brewer and Licensed Retailers Association and will be one of the Brewery Month ales featured at a tutored tasting for national and international beer writers at the Association's London headquarters on Wednesday 13th September.

Like the previous seven ales in the McMullen Special Reserve portfolio, Strong Russet Ale joins a long line of distinctive and historic ales, such as Original AK and the recently-launched Gladstone, which have been produced by McMullen since 1827 for those who appreciate the values of brewing quality and craftsmanship.

As usual, Tony Skipper has created this latest



McMullen Special Reserve with the finest natural ingredients which, for Strong Russet Ale, include malted East Anglia barley, whole leaf aroma hops from Kent and water from the wells under the Hertford brewery – plus the measure of pure Hertfordshire honey.

“Strong Russet Ale follows the McMullen dictum,” said Tony, “that the very best beers are produced by dedicated people using the finest natural ingredients and traditional brewing methods. It has the russet glow of autumn and a taste that is silky smooth.”

It is the strongest McMullen Special Reserve so far with an ABV (alcohol by volume) of 5.5 per cent.

Strong Russet Ale will be available on handpump for 10 weeks from Friday 8th September in around 150 selected McMullen pubs and free trade outlets.

CALLING ALL SOUTH-EAST LONDON BRANCH MEMBERS!

Now we've got your attention, we need your help.

The first planning meeting for Catford Beer Festival 1996 takes place at 8pm on Monday the 23rd of October at the Crystal Palace Tavern, 105 Tanners Hill, Deptford SE8.

We need new faces and fresh ideas to help make next years event the best yet. So please, come along and give us a hand!

For more information please contact Andrew Padgham, Tel 0181 693 6181 (work).

A CONSTANTLY CHANGING SELECTION OF ALES FROM MICRO BREWERIES UP AND DOWN THE COUNTRY

– phone Gary for details of which ales are on

also Wheat Beers, Thatchers and Westcroft Traditional Ciders, Belgian Fruit Beers and Fruit Wines

Function Room for hire

CAMRA SW London Pub of the Year

Priory Arms

Lansdowne Way, Stockwell, SW8
(5 minutes Stockwell Tube)
Telephone 0171 622 1884

COOKING WITH BEER

Once again we are indebted to CCC Leisure Ltd for this month's "Poultry Choice" which is **SPICY COCONUT CHICKEN** and which is sufficient to serve six portions.

Ingredients:

- 2 x 2 1/2 lb "Fryers" (disjointed)
- 4 Tablespoons peanut or salad type oil
- 2 Cups finely chopped onions
- 1 Clove garlic, minced
- 1/4 Cup ground almond nuts
- 1 Tablespoon black treacle
- 2 Teaspoons salt
- 1 Teaspoon dried ground chilli peppers
- 1 Bay leaf
- 1 Cup beer
- 1/2 Cup single cream
- 1/2 Cup grated cream coconut or fresh coconut

Method:

Brown the chicken in the oil; remove and in the oil remaining sauté the onions and garlic for 10 minutes. Stir in the almonds, salt, treacle and chilli peppers. Return the chicken to the pan and add the bay leaf, beer, cream and coconut. Cover and cook for one hour over a low heat (or until the chicken is cooked).

NEWS FROM YOUNGS BREWERY

Children from a Balham play group have become the first young customers of their local pub.



The boys, girls and staff of the Lochinvar play group are taking advantage of the granting of a children's certificate — one of the first in south London — to the Duke of Devonshire in Balham High Road.

The pub, which as reopened after extensive refurbishment, is the first Young's house to be granted the new certificate, which lets children under 14 into licensed bars for the first time.



They were previously not allowed into areas where alcohol was sold.

The Duke of Devonshire, which is full of splendid 19th-century wood and glasswork, now has a new paved garden, with a children's play area and a

pétanque pitch, and a beautiful garden bar, created out of an old function room.

The new bar, which is a no-smoking area, was singled out for praise by members of the South Western Division licensing bench, who visited the pub before granting the children's certificate.

The Lochinvar play group intend to make occasional visits to the Duke so that the children can have lunch and enjoy the playground.

Regulars who prefer to get away from children while having a pint of Young's real ale or one of the pub's 15 fine wines need not worry, however. The large front bars are still out of bounds to under-18's.

GET YOUR TICKETS NOW!

FOR THE 2ND WOKING

BEER FESTIVAL

AT THE WOKING LEISURE CENTRE

Friday 10 November 6 - 11pm

Saturday 11 November 11am - 3.30pm & 6 - 11pm

Over 60 Real Ales - All beers planned to be available every session - PLUS Ciders and Foreign Beers, Live Bands.

Food and Juice Bar.

Jointly organised by Surrey/Hants Border CAMRA and Woking Borough Council

Tickets selling fast: Each session limited admission by ticket only. **Price £3.25 in advance - includes commemorative pint glass.** Concessions for CAMRA members, special group rates available.


Free Children's Entertainment Saturday Lunchtime in Separate Areas: Family Room, Face Painting, Punch & Judy, Magic Shows and free use of the Pick'n'Mix Playstore.

BRING THE WHOLE FAMILY
1 child free with each ticket-holding adult, extra children £1.00.
(The main festival area is strictly for over 18's only)

Tickets available in advance from Woking Leisure Centre and Woking Civic Offices or phone the Credit Card Hotline on 01483 771055.

Postal applications to: Mike Smith, Common Services Manager, Woking Borough Council, Civic Offices, Woking, Surrey GU21 1YL. Cheques made payable to Woking Borough Council.

For information please telephone 01483 724466 or 01483 771122.



King & Barnes

FINE SUSSEX ALES



AVAILABLE NOW



AVAILABLE
W/C 31st OCTOBER



AVAILABLE
W/C 5th DECEMBER

ON SALE IN ALL KING & BARNES PUBS
AND SELECTED FREE TRADE OUTLETS

KING & BARNES LTD
18 BISHOPRIC, HORSHAM, WEST SUSSEX RH12 1QP
TELEPHONE: HORSHAM (0403) 270470

BEER BRIEFING
LONDON BEER GUIDES UPDATE 107 continued

SE1, JUBILEE TAVERN. Truman (SE22)
SE3, BRITISH OAK. Courage (SE45, U102)
SE3, CROWN. Courage* (SE46, U102)
SE3, NEW TIGERS HEAD. Courage (SE46)
SE3, ROYAL STANDARD. Truman (SE49)
SE6, BONNIES. Watney. Demolished following fire (SE65)
SE6, COPPERFIELD. Courage (SE67)
SE6, TWO BREWERS. Courage (SE69)
SE9, BEEHIVE. Courage (SE85)
SE9, GREYHOUND. Courage (SE86)
SE9, PORCUPINE. Courage (SE87)
SE9, ROYAL TAVERN. Watney (SE88)
SE10, FROG & RADIATOR. Truman (SE94, U102)
SE10, KINGS ARMS. Courage (SE98)
SE10, YACHT TAVERN. Watney (SE103)
SE11, PILGRIM. Watney (SE108)
SE13, WHITE HORSE. Courage (SE123)
SE18, CASTLE. Watney (SE166)
SE18, RED LION, 95 Plumstead High Street. Courage* (SE173, U102)
SE18, WHO'D A THOUGHT IT. Truman (SE175)
SE19, CONQUERING HERO. Courage* (SE179, U102)
SE20, GRACES. Truman* (SE188)
SE21, ROSENDALE TAVERN. Watney (SE194, U102)
SE22, FOREST HILL TAVERN. Truman (SE198)
SE24, HALF MOON. Courage (SE210, U102)
SE24, PRINCE REGENT. Truman (SE210)
SE24, TULSE HILL HOTEL. Courage (SE210, U102)
SE25, SELHURST ARMS. Courage (SE217)
SE26, DOLPHIN. Courage (SE222)
SE27, RAILWAY. Watney (fizz) (SE229, U102)
SE27, WHITE HART TAVERN. Watney (SE230)
BECKENHAM, COACH & HORSES. Courage (3SE204, U53, K37)
BECKENHAM (ELMERS END), ELMER LODGE. Truman (3SE205, U55, K81)
BECKENHAM (ELMERS END), RISING SUN TAVERN. Watney. TAVERN tag now removed. (3SE205, U59, K81)
BECKENHAM, THREE TUNS. Courage (3SE205, U53, K37)
BEXLEY (ALBANY PARK), ALBANY. Courage (3SE208, K31)
BEXLEY, BLUE ANCHOR, Bridgend Road. Courage. Note correct address (3SE208, K40)
BEXLEY, OLD MILL. Watney (3SE210, K40)
BEXLEYHEATH, COACH HOUSE. Truman. Formerly LORD HILL TAVERN (3SE212, U47, K40)
BEXLEYHEATH, YACHT. Courage (3SE214, K41)
BROMLEY (SUNDRIDGE PARK), CROWN, 46 Plaistow Lane. Courage (3SE216, K164)
BROMLEY COMMON (BROMLEY), CHATTERTON ARMS. Courage (3SE221, K50)
CHISLEHURST, BICKLEY ARMS. Courage (3SE225, K63)
CHISLEHURST, TIGERS HEAD. Courage (3SE227, K63)
COULSDON, RED LION. Watney (3SE229, U48, U98)
CROYDON, CRICKETERS, 47 Shirley Road. Courage (3SE238, U55, U62)
CROYDON, CROYDON. Courage*. Subsequently renamed RAT & PARROT (3SE239, U98)
CROYDON, DALES. Truman. Reverted to FORESTDALE ARMS (3SE239, U49)
ERITH, HARROW. Truman (3SE255, U47, K82)
ORPINGTON, ARTICHOKE. Courage (3SE265, K130)
ORPINGTON (LOCKS BOTTOM), BRITISH QUEEN. Courage (3SE265, K115)
ORPINGTON, MAXWELL. Courage (3SE266, K130)
SIDCUP, BLACK HORSE. Courage (3SE272, K154)
SIDCUP (BLACKFEN), JOLLY FENMAN BREWERY. Watney. Now reverted to JOLLY FENMAN, brewery removed (3SE273, U43, U64, K43)
SIDCUP (BLACKFEN), WOODMAN. Courage (3SE274, K43)
THORN CROYDON, STAG. Courage/Watney (3SE278)
THORNTON HEATH, HORSESHOE. Courage (3SE283)

WELLING, GUY, EARL OF WARWICK. Courage (3SE286, U47, K178)
WELLING, PLOUGH & HARROW. Courage (3SE287, K178)
WELLING, WE ANCHOR IN HOPE. Courage (3SE287, K178)
WEST WICKHAM, PICKHURST. Truman (3SE288, U55, K181, U86)
WEST WICKHAM, WHEATSHEAF. Watney. Now WHEATSHEAF TAVERN (3SE288, U55, K181)
SOUTH WEST
SW1(B), GLOUCESTER. Watney*# (SW10, U95, U100)
SW1(B), GRENADIER. Watney (SW10, U77, U95, U100)
SW1(B), HORSE & GROOM. 1 Kinnerton Street. Watney (SW10, U95)
SW1(B), ORANGE BREWERY. Watney*# (SW10, U64, U103)
SW1(B), PLUMBERS ARMS. Watney (SW11, U76, U100)
SW1(B), PRINCE OF WALES TAVERN, 44 Elizabeth Street. Watney. TAVERN tag now removed and replaced by ALE HOUSE (SW11, U39, U100)
SW1(B), ROSE & CROWN. Watney* (SW11, U98)
SW1(B), TALBOT TAVERN. Watney*. TAVERN tag now removed SW11, U100)
SW1(B), TATTERSALLS TAVERN. Watney* (SW11, U100)
SW1(B), TRAVELLERS TAVERN. Watney*# (SW11, U100)
SW1(P), WHITE SWAN. Watney# (SW16, U88)
SW1(SJ), BLUE POSTS TAVERN. Watney*. TAVERN tag not part of title although separately displayed (SW12, U100)
SW1(SJ), CAPTAINS CABIN. Courage* (SW12, U100)
SW1(SJ), CHEQUERS TAVERN. Watney* (SW12, U100)
SW1(SJ), CLARENCE TAVERN. Grand Met#. TAVERN tag now removed (SW12, U100)
SW1(SJ), SILVER CROSS. Watney* (SW12, U100)
SW1(SJ), TATTERSALL CASTLE. Grand Met (fizz)#. Omitted in error from SW guide. Incorrectly listed under WC2 in W guide (W56)
SW1(W), ADAM & EVE. Watney* (SW16, U95)
SW1(W), ALBERT. Watney (SW16, U74)
SW1(W), COLONIES. Watney (SW17)
SW1(W), DUKE OF YORK TAVERN. Watney. TAVERN tag now removed (SW17)
SW1(W), GRAFTONS. Watney# (SW17)
SW1(W), GREENCOAT BOY. Watney (SW17, U86)
SW1(W), KINGS ARMS. Watney (SW17, U80)
SW1(W), OLD ROSE. Watney (SW17, U80)
SW1(W), PHOENIX. Watney# (SW17)
SW1(W), SHAKESPEARE TAVERN. Watney (SW18, U62)
SW1(W), STAG. Watney (SW18)
SW1(W), STAGE DOOR. Watney*# (SW18, U76, U80, U98)
SW1(W), TWO CHAIRMEN, 39 Dartmouth Street. Watney# (SW18)
SW1(W), VICTORIA. Watney# (SW18, U67)
SW2, HOPE. Watney (SW19)
SW2, SULTAN. Courage (SW19, U74)
SW2, WHITE HORSE. Truman (SW19)
SW3, BUNCH OF GRAPES. Watney# (SW21, U56)
SW3, CADOGAN ARMS TAVERN. Watney (SW21, U80)
SW3, CHELSEA POTTER TAVERN. Watney. TAVERN tag now removed (SW21)
SW3, GREENS. Watney. Subsequently renamed CAHOOTS (SW22, U102)
SW3, KINGS HEAD & EIGHT BELLS. A Whitbread bagged pub believed to have been owned by Grand Met but now disposed of to Whitbread. (SW22)
SW3, MAN IN THE MOON. Watney# (SW22, U51, U53, U80)
SW3, PHOENIX. Watney# (SW22, U38)
SW3, QUEENS ARMS TAVERN. Watney. Subsequently sold to Charles Wells. (SW23, U105)
SW3, QUEENS HEAD. Courage (SW23)
SW3, SHUCKBURGH ARMS. Watney# (SW23, U39, U76)
SW3, WELLESLEY ARMS. Watney (SW23, U64, U88)
SW5, BROMPTONS. Truman (fizz) (SW25, U62)
SW5, CLARENCE. Truman (SW25, U53)
SW5, COURTFIELD. Watney (SW25)
SW5, CROMWELLS. Watney. Subsequently renamed RAT & PARROT (SW25, U98)
SW6, COCK. Truman (SW27, U80)

THE FOURTEENTH PIG'S EAR

SOFT DRINKS
ALSO
AVAILABLE

CIDERS &
PERRYS

FOREIGN
BEERS



TUESDAY 28 NOVEMBER - SATURDAY 2 DECEMBER 1995

OLD TOWN HALL, STRATFORD, E15

LAUNCH: TUESDAY 4pm - 11pm

ALL DAY SESSIONS: WEDNESDAY TO SATURDAY - 11am - 11pm

FOOD: ALL SESSIONS FREE CRECHE: SATURDAY - 12noon - 5pm

ADMISSION: Tues. - Thurs. after 4pm £2.00 Fri. after 4pm £3.00

Sat. £2.00 all day. All other times admission FREE

Card carrying CAMRA members free admission Tues. & Sat., £1 all other times

TRY MAD JUDGE BEFORE HE TRIES YOU

The tremendous success of Greene King's new range of seasonal ales – known collectively as the King's Court – looks set to continue with the introduction, on 18th September, of Mad Judge.

This cask conditioned ale has been brewed to cause a stir. Mad Judge glows red. The juice of cranberries has been added, to give the beer a sweet-bitter taste with just a hint of fruit flavour. At 4.2% abv, it is a very appealing, very drinkable bitter.



Green King Head Brewer, Alistair Heeley, explains, "Cranberry juice gives the most delightful, subtle fruit flavour to the

ale. The flavour, colour and aroma are reminiscent of Autumn fruits, but the beer is not too sweet. All in all, a memorable pint."

Mad Judge follows hot on the hooves of the Summer ale, King's Champion, which in turn followed The Sorcerer and Black Baron (the latter due back on 9th October). Mad Judge is a special beer and is only available for 3 weeks. Orders from Greene King pubs are already high and Marketing

Manager Adam Collett is convinced that sales will be buoyant.

"Although curiosity may play a part in encouraging orders for Mad Judge," says Adam, "the main point is that our seasonal ales have been universally welcomed, and that each beer builds on Greene King's reputation for outstanding quality cask beers."

Mad Judge is also available to the Free Trade though Greene King as well as a wide range of Wholesalers and National suppliers.

Advertise in next month's

LONDON DRINKER

*and get your message direct to the brewers,
pub owners, licensees, festival organisers, pub
regulars and drinkers of London and beyond*

Call now, day or evening, 7 days a week

BARRY TILLBROOK

0181 989 7523

APPLICATION TO JOIN CAMRA

I/We wish to become members of the Campaign for Real Ale Limited and agree to abide by the Memorandum and Articles of Association of the Campaign.

Name(s)

Address

.....Postcode

Signature.....Date

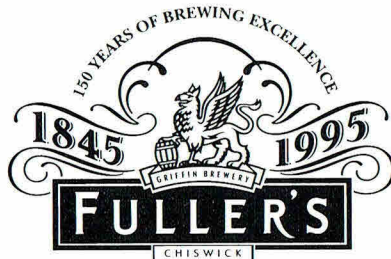
I/We enclose the remittance for individual/joint membership:

	Individual Annual	Joint Annual	Individual Life	Joint Life
UK and EEC	£12 <input type="checkbox"/>	£14 <input type="checkbox"/>	£120 <input type="checkbox"/>	£140 <input type="checkbox"/>
Rest of the World	£16 <input type="checkbox"/>	£18 <input type="checkbox"/>	£160 <input type="checkbox"/>	£180 <input type="checkbox"/>
Student/Unwaged	£6 <input type="checkbox"/>	£7 <input type="checkbox"/>		
Disabled	£6 <input type="checkbox"/>	£7 <input type="checkbox"/>	£60 <input type="checkbox"/>	£70 <input type="checkbox"/>
Retired	£6 <input type="checkbox"/>	£7 <input type="checkbox"/>	£60 <input type="checkbox"/>	£70 <input type="checkbox"/>

Send your remittance (payable to CAMRA Ltd) to:

Membership Secretary, CAMRA Ltd, 230 Hatfield Road, St Albans, Herts AL1 4LW





1995 has certainly been a time of celebration for Fuller's. For starters, unless you have been on the Planet Zog for the last ten months, you must know it is the 150th Anniversary of the Partnership of Messrs Fuller, Smith & Turner. For 150 years Fuller's have been

brewing beers of excellence and quality and 1995 seems to have been the year when this has been recognised by a variety of different judging panels. First, back in April, Fuller's Golden Pride, that potent barley wine of 9.2%, gained a

bronze medal in the Superstrength Ales category at the first ever London International Beer and Cider Competition held during the 9th International Food & Drink Exhibition at Earls Court. Four months later at nearby Olympia, Brewing Director, Reg Drury, and the entire Brewery were over the moon to hear that London Pride had been voted "Champion Best Bitter" and the legendary ESB had come a worthy second in the Strong Ale category by CAMRA. These two awards ensured that, fittingly, Fuller's was the most

successful Brewery at the GBBF in 1995. Finally, 1845 Ale, our bottle-conditioned beer originally produced as a special anniversary brew, came second in the Bottle-Conditioned Beer of the Year Competition sponsored by the Guardian newspaper. The panel of



Reg Drury (centre), celebrates with his team on the news that London Pride had been voted 'Champion Best Bitter'.

judges was headed by Roger Protz who writes that they, "were mightily impressed by Fuller's 6.3% 1845... and delighted in the complex fruit cake and nutmeg character of the ale." As Fuller's looks to the future and the

next 150 years it can only hope that such awards will remain a regular thing. The Brewery has already responded to the demand for greater variety in the pubs and has this year introduced a full range of seasonal beers, all of which have proved popular; the mild Hock, the light Summer Ale, the dark India Ale and the new winter warmer, Old Winter Ale, continue to provide the customer with beers of quality that work well with the legendary core brand trio of London Pride, ESB and Chiswick Bitter. Cheers!

BEER BRIEFING
LONDON BEER GUIDES UPDATE 107 continued

SW6, COTTAGE. Watney (SW27)
 SW6, DURRELL ARMS TAVERN. Watney. Subsequently renamed **RAT & PARROT** (SW27, U98)
 SW6, JOLLY MALTSTER. Courage (SW28, U45, U81)
 SW6, MITRE. Courage (SW29, U73)
 SW6, PRINCE OF WALES. Watney (SW29)
 SW7, ENNISMORE ARMS. Watney# (SW31, U56)
 SW7, GLOUCESTER ARMS. Subsequently renamed **FINNEGANS WAKE**. Watney (SW31, U88)
 SW7, HARRINGTON. Courage (SW31)
 SW7, HEREFORD ARMS. Watney# (SW31, U56, U88)
 SW7, HOOP & TOY. Watney# (SW31)
 SW7, STANHOPE TAVERN. Watney. Reverted to **STANHOPE ARMS** (SW32)
 SW7, TEA CLIPPER TAVERN. Watney. TAVERN tag now removed (SW32)
 SW7, ZETLAND ARMS. Watney# (SW32, U52, U84)
 SW8, VICTORIA, 166 Queenstown Road. Watney. Formerly **BROWNS** (SW33, U32, U48, U50, U70)
 SW10, HOLLYWOOD ARMS. Watney (SW38)
 SW11, DOG & DUCK. Watney. Formerly **SAVILLES** (SW41, U46, U91)
 SW11, EAGLE TAVERN, 231 Battersea Park Road. Watney (SW39, U39, U71)
 SW11, NORTHCOTE. Watney (SW41, U52, U61)
 SW11, PRINCE ALBERT. Watney (SW41, U39, U71)
 SW11, WINDSOR CASTLE. Courage (SW41, U60, U91)
 SW12, GEORGE. Courage (SW42)
 SW13, BRIDGE TAVERN. Watney (SW43, U55)
 SW14, PIG & WHISTLE. Grand Met# (U43, U51, U62, U71)
 SW14, SHIP TAVERN. Watney (SW45, U56, U93)
 SW15, CEDAR TREE. Watney (SW46, U57)
 SW15, PRINCE OF WALES. Courage (SW47, U57)
 SW15, RAT & PARROT. Watney. Formerly **SPORTS** (SW47, U42, U85)
 SW15, SPENCER ARMS. Watney (SW47)
 SW15, TELEGRAPH INN. Watney. INN tag now removed (SW47, U56)
 SW16, GENEVIEVE. Grand Met (ex Courage)# (SW48, U39, U53)
 SW16, GREYHOUND. Watney#. Now renamed **GREYHOUND BREWERY** (SW48, U62)
 SW16, HORSE & GROOM. Courage (SW48, U32)
 SW16, ROSE & CROWN TAVERN. Watney. TAVERN tag now removed (SW49, U49)
 SW17, KINGS HEAD. Truman (SW50, U29, U43)
 SW19, KING OF DENMARK. Courage (SW56)
 SW19, OLD LEATHER BOTTLE TAVERN. Truman. TAVERN tag now removed (SW56, U28, U59, U67)
 SW19, PRINCE OF WALES, 2 Hartfield Road. Watney# (SW56, U52)
 SW19, SWAN. Watney (SW56, U28, U80)
 SW19, WOODMAN. Watney# (SW56, U29, U34, U43, U49)
 SW20, EMMA HAMILTON. Watney (SW59, U59, U74)
 SW20, RAYNES PARK. Watney. Now **RAYNES PARK TAVERN** (SW59, U80)
 BEDDINGTON (HACKBRIDGE), RED LION. Courage (SW59, U43)
 BEDDINGTON (WALLINGTON), MERRY GO ROUND. Truman. Formerly **ROUNDERS**. Closed permanently and boarded up (SW59, U69)
 CHEAM, RAILWAY. Courage (SW61)
 HAM, NEW INN. Watney# (SW63, U56)
 KEW, ROSE & CROWN. Courage (SW69, U48, U58)
 KINGSTON, BLACK HORSE. Truman (SW64)
 KINGSTON, RAM. Courage (SW66)
 KINGSTON, WHEELWRIGHTS ARMS. Watney (SW66)
 MITCHAM, CROWN. Courage (SW68, U39)
 MITCHAM, THREE KINGS. Courage (SW69, U34, U51)
 MORDEN, BEVERLEY. Watney (SW70, U53)
 MORDEN, CROWN INN. Courage. INN tag now removed

(SW70)
 NEW MALDEN, EARL BEATTY. Watney (SW70)
 NEW MALDEN, FOUNTAIN. Courage (SW70, U102)
 RICHMOND, BULL & BUSH. S&N appear to have inherited management of this pub, which is Charrington badged from Chef & Brewer (SW71)
 RICHMOND, OLD ORLEANS. Watney. Formerly **LASS OF RICHMOND HILL** (SW72, U105)
 RICHMOND, RICHMOND ARMS. Watney (SW73)
 SURBITON, FERRET & TROUSER LEG. Grand Met (U105)
 SUTTON, ANGEL. Courage (SW76)
 SUTTON, BELMONT. Watney (SW76, U46)
 WORCESTER PARK, WORCESTER. Watney. Now **WORCESTER TAVERN** (SW78)
 WEST
 W2, ASHES TAVERN. Watney (W58)
 W2, BENTLEYS. Watney Subsequently renamed **RAT & PARROT** (W58, U55, U94)
 W2, BLACK LION. Watney# (W58, U71)
 W2, CLEVELAND ARMS. Watney* (W58, U93)
 W2, DANIEL GOOCH. Watney# (W58, U71)
 W2, DICKENS INN TAVERN. Truman. Now just **DICKENS TAVERN** (W59)
 W2, GREEN MAN. Watney (W59, U80)
 W2, KINGS HEAD TAVERN. Truman TAVERN tag now removed (W59, U51)
 W2, PIERS. Truman (W62)
 W2, REDAN TAVERN. Watney* (W62, U93)
 W2, ROYAL OAK. Truman (W63, U55)
 W2, SAWYERS ALE HOUSE. Truman (W63, U93)
 W2, SWAN TAVERN. Watney#. TAVERN tag now removed despite it historically being part of the title (W63)
 W2, TAVISTOCKS. Watney*. Subsequently reverted to **FOUNTAINS ABBEY** (W63, U51, U101)
 W2, WHITE HART. Courage (W64, U93)
 W3, GOLDSMITHS ARMS. Watney (W64, U92)
 W4, BARLEY MOW. Watney (W68, U92)
 W4, BULLS HEAD. Watney (W68, U94)
 W4, CITY BARGE. Courage (W68, U94)
 W4, GROVE PARK HOTEL. Courage (W69, U51)
 W4, HOLE IN THE WALL. Watney. Formerly **SUTTON LANE** (W69, U61, U94)
 W4, JOHN BULL (ALE HOUSE). Truman (not Watney as stated in W guide). Now **JOHN BULL (THE WORLD FAMOUS)** (W69, U56, U94)
 W4, PACKHORSE & TALBOT. Watney# (W69, U51, U94)
 W4, PILOT. Watney (W69, U94)
 W4, ROEBUCK. Truman. Subsequently renamed **RAT & PARROT**, formerly **CHISWICK EYOT** (W68, U85, U94)
 W5, BELL. Watney (W72, U94)
 W5, GRANGE. Watney. Now **GRANGE TAVERN** (W72, U94)
 W5, HAVEN ARMS. Watney (W72, U74, U94)
 W5, NEW INN. Watney (W73, U94)
 W5, OLD ORLEANS. Grand Met (fizz)* (U96)
 W5, QUEEN VICTORIA. Watney# (W73, U94)
 W5, THREE PIGEONS. Courage (W73, U46)
 W6, BLACK LION TAVERN. Watney. TAVERN tag now removed (W74, U89)
 W6, CRABTREE. Watney (W74, U80)
 W6, DISTILLERS ARMS. Courage (W74)
 W6, DUKE OF CORNWALL. Watney (W74)
 W6, GEORGE. Watney (W74, U71)
 W6, HAMPSHIRE HOG. Watney (W76, U94)
 W6, QUEENS HEAD TAVERN. Watney. TAVERN tag now removed (W77)
 W6, RAVEN. Watney (W77, U89)
 W6, RUTLAND (ALE HOUSE). Watney (W77)
 W7, DUKE OF YORK TAVERN. Watney. TAVERN tag now removed (W78)
 W7, GROSVENOR. Courage (W78)
 W7, OLD BILL. Watney (fizz) (W79)
 W8, GOAT. Watney# (W82, U56, U94)
 W8, GREYHOUND. Watney# (W82, U56, U94)
 W8, PRINCE OF WALES. Truman (W82, U94)



FALCON & FIRKIN

360 Victoria Park Road, London E9 7BT TEL: 0181-985 0693

FARRIER & FIRKIN

74-76 York Street, London W1H 1DP TEL: 0171-262 1513

FERRET & FIRKIN

114 Lots Road, London SW10 0RJ TEL: 0171-352 6645

FETTLER & FIRKIN

15 Chilworth Street, London W2 3QU TEL: 0171-723 5918

FIDDLER & FIRKIN

14 South End, Croydon CR0 1DL TEL: 0181-680 9728

FINANCIER & FIRKIN

43 Market Place, Kingston-Upon-Thames KT1 1JQ TEL: 0181-974 8223

FINNOCK & FIRKIN

100 Upper Street, London N1 0NP TEL: 0171-226 3467

FISH & FIRKIN

53 Alexandra St, Southend-on-Sea SS2 6ES TEL: 01702-39 1984

FLAUTIST & FIRKIN

588 Mile End Road, London E3 4PH TEL: 0181-981 0620

FLICKER & FIRKIN

Dukes Yard, Surrey TW9 1HP TEL: 0181-332 7807

FLOUNDER & FIRKIN

54 Holloway Road, London N7 8JP TEL: 0171-609 9574

FLOWER & FIRKIN

Kew Gardens Station, Surrey TW9 3BZ TEL: 0181-332 1162

FLYMAN & FIRKIN

166-170 Shaftesbury Avenue, WC2H 8UB TEL: 0171-240 7109

FOX & FIRKIN

316 Lewisham High Street, London SE13 3HL TEL: 0181-690 8925

FREEDOM & FIRKIN

196 Tooting High Street, London SW17 0CF TEL: 0181-672 5794

FRIAR & FIRKIN

120 Euston Road, London NW1 2AL TEL: 0171-387 2419

FRIESIAN & FIRKIN

87 Rectory Grove, London SW4 0DR TEL: 0171-622 4666

FRIGATE & FIRKIN

24 Blythe Road, London W14 0HA TEL: 0171-602 1412

FROG & FIRKIN

96 Ladbroke Grove, London W11 1PY TEL: 0171-229 5663

FULMAR & FIRKIN

51 Parker Street, London WC2B 5PS TEL: 0171-405 0590

FUSILIER & FIRKIN

7-8 Chaik Farm Road, London NW1 2AL TEL: 0171-485 7858

GOOSE & FIRKIN

47-48 Borough Road, London SE1 1DR TEL: 0171-403 3590

PHAROAH & FIRKIN

90-90a Fulham High Street, London SW6 3LF TEL: 0171-731 0732

PHEASANT & FIRKIN

166 Goswell Road, London EC1 1DT TEL: 0171-253 7429

PHOENIX & FIRKIN

Windsor Walk, London SE5 3BB TEL: 0171-701 8282

PHOTOGRAPHER & FIRKIN

23-25 Ealing High Street, London W3 6ND TEL: 0181-567 1140

USQUE AD MORTEM BIBENDUM

BEER BRIEFING
LONDON BEER GUIDES UPDATE 107 continued

W8, PRINCESS VICTORIA. Watney (W82, U94)
W8, RAT & PARROT. Watney. Formerly OLD SWAN (W82, U74, U94)
W8, SCARSDALE ARMS. Watney Now SCARSDALE TAVERN (W83, U95)
W9, CARLTON BRIDGE (ALE HOUSE). Watney. Now simply CARLTON BRIDGE (W83, U74)
W9, LORD ELGIN. Watney (W83)
W11, DUKE OF NORFOLK. Watney (W87, U51)
W11, RAJ. Watney (W90)
W13, COACH & HORSES. Watney (W92, U68, U79)
W13, FORESTER. Courage (W92, U79, U83)
W13, PRINCE ARTHUR. Courage (W93, U83, U86)
W14, BARONS (ALE HOUSE). Watney (W94)
W14, CROWN & SCEPTRE. Watney (W94, U71, U95)
W14, FOX & HOUNDS. Watney* (W94, U71, U104)
W14, KENSINGTON TAVERN. Watney (W94, U95)
W14, BEDFONT, BELL ON THE GREEN. Watney (W96)
BEDFONT, GREEN MAN. Watney (W96, U84)
BEDFONT, LOAD OF HAY. Courage (W96)
BEDFONT, PLOUGH. Courage (W99, U94)
CRANFORD, JOLLY WAGGONER. Truman (W99)
CRANFORD, TRAVELLERS FRIEND. Watney (W100)
CRANFORD, WHITE HART. Courage (W100)
FELTHAM, AIRMAN. Courage (W100)
FELTHAM, CROWN & SCEPTRE. Watney (W100, U99)
FELTHAM, RED LION. Watney (W100, U95)
GREENFORD, OLDFIELD TAVERN. Truman (W102)
GREENFORD, RAILWAY HOTEL. Watney (W102)
GREENFORD, RED LION. Watney (W102)
HANWORTH, HORSE & GROOM. Watney (W108, U94)
HAYES, CRANE. Watney (W117)
HAYES, WAGGON & HORSES. (W118)
HAYES, WHITE HART. Courage (W118)
HESTON, ROSE & CROWN. Watney (W121)
HILLINGDON, HILLINGDON ARMS. Truman (W123)
HOUNSLOW, BELL. Watney# (W126, U52, U80, U95, U99)
HOUNSLOW, BLACK HORSE. Watney (W126)
HOUNSLOW, BULSTRODE. Watney (W126)
HOUNSLOW, COACH & HORSES. Watney*. Formerly BARNABYS (W126, U68, U95, U99)
HOUNSLOW, DUKE OF YORK, 672 Hanworth Road. Watney (W126, U99)
HOUNSLOW, EARL HAIG. Watney (W126, U95)
HOUNSLOW, TANKERVILLE. Watney. Subsequently renamed BIG HAND MO'S (GOOD TIME EMPORIUM) (W128, U95, U98)
HOUNSLOW, WARREN. Courage (W128)
ICKENHAM, SOLDIERS RETURN. Courage (W130)
ISLEWORTH, CHEQUERS. Watney (W130)
ISLEWORTH, LONDON APPRENTICE. Watney (W131)
ISLEWORTH, MILFORD ARMS. Watney** (W131, U53, U99)
ISLEWORTH, WOODLANDS TAVERN. Watney (W131, U90)
NORTHOLT, SWAN. Watney (W134)
RUISLIP, BLACK BULL. Watney (W137)
SIPSON, THREE MAGPIES. Watney (W140)
SOUTHALL, GRAND JUNCTION ARMS. Watney (W142)
SOUTHALL, LORD ALLENBY. Watney (W142)
TEDDINGTON, WALDEGRAVE ARMS. Watney* (W147, U101)
TWICKENHAM, AILSA TAVERN. Watney (W150, U94)
TWICKENHAM, BARMY ARMS. Watney (W150)
TWICKENHAM, ST MARGARETS. Watney* (W151, U94, U99)
UXBRIDGE, QUEENS HEAD. Watney (W154)
UXBRIDGE, SWAN & BOTTLE. Watney (W154)
UXBRIDGE, WHITE HORSE. Watney (W154)
WEST DRAYTON, SIX BELLS. Truman (W161)
WEST DRAYTON, SWAN. Watney (W161)
WHITTON, WINNING POST. Watney (W162)

ILFORD UPDATE

A few issues ago I wrote a brief report on recent developments in Ilford. I was recently reminded that I forgot to mention the Red Cow in Leg Street. For the last year or so this outlet has been selling Bateman's XB at around £1.25 a pint. Bateman's is very rare for the area and recent tastings at this pub have varied from OK to excellent but very good value nonetheless. Word of warning – the beer is served through a sparkler – ask for it to be removed please. More reports would be welcomed.

On a recent visit to Romford to the cinema (a hobby of mine as enjoyable as drinking ale!) I named the recently refurbished Golden Lion, 2 High Street. On venturing in I came across a number of handpumps including 'Butcombe Bitter' and 'French Heather Ale' as well as something resembling a Wetherspoon's Range! Sadly, Swan Necks and Sparklers were in abundance but once the latter was removed the Butcombe was very good, albeit a little pricey. A blackboard advertised 'this months guest ales' which included beers from Exe Valley. Hop Back and nine other small breweries. I shall be back, further reports to follow.

Simon Fyffe

Trinity Arms

Everyday is a festival, with a wide selection of cask conditioned ales served from up to eight handpumps. Come and enjoy the quiet friendly atmosphere of a traditional London independent free house.

***Enjoy Pool, Darts, Sunday Quiz
Night and Beer Garden***

Wednesday is Blues Night from 9 pm
Thursday is Jazz Night from 8.30 pm

*Open all permitted hours
Nearest tube Borough*

29 Swan Street, London SE1
Tel 0171-403-7931

CAMRA'S NATIONAL BREWERIANA AUCTION & COLLECTORS' FAYRE

CAMRA's 11th National Breweriana Auction & Collectors' Fayre will be held on Saturday 4th November 1995, at the Drill Hall, Old Bedford Road, Luton. The Luton beer festival will be taking place at the same time so thirsts can be suitably quenched. Collectors' stalls should be open from 11.00am, and the auction items will be available for viewing at that time.

The lots will include the usual mix of trays, glasses, bottles, mirrors, pump clips and other collectibles. In particular, there is expected to be a bottle from the Frome United brewery; a pint Yates & Jackson 1981 Royal Wedding Brew; a framed set of Marstons brewer's choice pump clip fronts and tasting notes; a rare Murrays of Edinburgh beer mat; a Simonds XX pump clip; a Jenner brewery tray; and various Guinness items. The auction will start at 1.00pm and is expected to finish by 5.00pm.

Entry to the auction will be by catalogue and these should be available from early October, price £1.85 by post from Bill Austin, 21 Sussex Road, Watford, WD2 5HL, £1.50 on the door. Stalls at the

collector's fayre are available for hire, contact Bill Austin, as above, or by phone, 01923 221217, for details.

..and now for something completely different..

CAMPBELL'S CELEBRATED GUIDED PUB CRAWLS

Numerous Itineraries featuring
Historically and Visually
Interesting

WEST END & SUBURBAN PUBS
(out of London tours also available)

**Ideal Event for Clubs or
Informal Groups**

Bookings at short notice sometimes possible

Tel 01798 867541 (late eves)

BRANCH CONTACTS

LONDON PUBS GROUP	JEFF PRIMM	0171-973 3096
BROMLEY	See SOUTH EAST LONDON	
CROYDON & SUTTON	PAUL EVERITT	0181-686 5053 (H & W)
EAST LONDON & CITY	ROY JENNER	0181-806 7605 (H)
ENFIELD & BARNET	DEREK SMITH	0181-805 1436 (H & W)
KINGSTON & LEATHERHEAD	ALLAN MARSHALL	0181-942 9115 (H)
		0171-918 3376 (W)
NORTH LONDON	ALISON COX	0181-742 0498 (H)
		0181-746 8148 (W)
RICHMOND & HOUNSLOW	BRIAN KIRTON	0181-384 7284 (H)
SOUTH EAST LONDON	TONY GIBSON	0181-658 5422
		(H&W-No calls after 9.00pm)
		01708 765150 (H)
SOUTH WEST ESSEX	ANDREW CLIFTON	0181-542 3158 (H,W & Fax)
SOUTH WEST LONDON	MARTIN BUTLER	01923 221155 (H & W)
WATFORD & DISTRICT	TONY SMITH	Fax: 01923 218625
		0171-824 2408 (W)
WEST LONDON	DI KEHOE	0181-868 2540 (H)
WEST MIDDLESEX	ALEX KOVAC	01895 238592 (W)

Continued from page 2

OUTLETS – SOUTH WEST and WEST PUBS

SW1 BARLEY MOW
SW1 BUCKINGHAM ARMS
SW1 FOX & HOUNDS
SW1 MORPETH ARMS
SW1 ORANGE BREWERY
SW1 PAVIOURS ARMS
SW1 RISING SUN
SW1 ROYAL OAK
SW2 HOPE & ANCHOR
SW2 CROWN & SCEPTRE
SW3 COOPERS ARMS
SW3 ROSE
SW3 SURPRISE
SW4 MANOR ARMS
SW4 MISTRESS P's
SW4 ROSE & CROWN
SW6 DUKE OF CUMBERLAND
SW6 WHITE HORSE
SW7 ANGLESEA ARMS
SW8 OLD RED HOUSE
SW8 PRIORY ARMS
SW8 SURPRISE
SW10 FERRET & FIRKIN
SW10 KINGS ARMS, 190 Fulham Road
SW10 STARGAZEY
SW11 BEEHIVE
SW11 DUKE OF CAMBRIDGE
SW11 PLOUGH
SW11 UNITY
SW12 MOON UNDER WATER
SW12 NIGHTINGALE
SW12 PRINCE OF WALES
SW13 BULLS HEAD
SW13 RED LION
SW13 ROSE OF DENMARK
SW14 HARE & HOUNDS
SW15 FOX & HOUNDS
SW15 GREEN MAN
SW15 RAILWAY
SW16 PIED BULL
SW17 CASTLE
SW17 J.J. MOONS
SW17 LEATHER BOTTLE
SW18 BREWERY TAP
SW18 HALFWAY HOUSE
SW18 OLD SERGEANT
SW18 PIG & WHISTLE
SW18 SPOTTED DOG
SW18 SPREAD EAGLE
SW19 ALEXANDRA
SW19 KINGS HEAD
SW19 PRINCE OF WALES, Morden Road
SW19 PRINCESS ROYAL
SW19 SULTAN
SW19 TRAFALGAR
CARSHALTON, RAILWAY TAVERN
CHESSINGTON, NORTH STAR
CHEAM, RAILWAY
HAM, HAND & FLOWER
KEW, COACH & HORSES
KINGSTON, ARTFUL DODGER
KINGSTON, CANBURY ARMS
KINGSTON, COCOANUT
KINGSTON, DRUIDS HEAD
KINGSTON, FIGHTING COCKS

KINGSTON, FINANCIER & FIRKIN
KINGSTON, FLAMINGO BREWERY CO.
KINGSTON, KELLY ARMS
KINGSTON, NEWT & FERRET
KINGSTON, PARK TAVERN
KINGSTON, SPRING GROVE
KINGSTON, TWO BREWERS
KINGSTON, WILLOUGHBY ARMS
KINGSTON, WYCH ELM
MITCHAM, CRICKETERS
MITCHAM, WHITE LION OF MORTIMER
NEW MALDEN, ROYAL OAK
RICHMOND, DYSARTS
RICHMOND, ORANGE TREE
RICHMOND, SHAFESBURY ARMS
RICHMOND, TRIPLE CROWN
RICHMOND, WATERMANS ARMS
RICHMOND, WHITE CROSS
SURBITON, BUN SHOP
SURBITON, DENBY DALE
SURBITON, NEW PRINCE
SURBITON, RISING SUN
SUTTON, MOON ON THE HILL
SUTTON, NEW TOWN
WALLINGTON, WHISPERING MOON
W1 BEEHIVE, 7 Homer Street
W1 CLEVELAND ARMS
W1 MOON & SIXPENCE
W1 MORTIMER ARMS
W1 PRINCE ALFRED
W1 WESTMORELAND ARMS
W1 WINDMILL
W2 ARCHERY TAVERN
W2 ROYAL STANDARD
W3 KINGS ARMS
W5 PLOUGH
W5 RED LION
W5 ROSE & CROWN
W5 WHEATSHEAF
W6 BROOK GREEN HOTEL
W6 RICHMOND ARMS
W10 VILLAGE INN
W11 FROG & FIRKIN
W12 MOON ON THE GREEN
W13 THE FORESTER
W14 WARWICK ARMS
BRENTFORD, GLOBE
BRENTFORD, LORD NELSON
CRANFORD, QUEENS HEAD
FELTHAM, GENERAL ROY
HAMPTON COURT, KINGS ARMS
HAMPTON WICK, OLD KINGS HEAD
HAMPTON WICK, WHITE HART
HARLINGTON, CROWN
HAYES, BLUE ANCHOR
HAYES, MOON UNDER WATER
HAYES END, MOON & SIXPENCE
HOUNSLOW, BEAVER
HOUNSLOW, CROSS LANCES
HOUNSLOW, EARL RUSSELL
ISLEWORTH, COUNTY ARMS
ISLEWORTH, ROYAL OAK
ISLEWORTH, VICTORIA
SOUTHALL, BEACONSFIELD ARMS
SOUTHALL, SCOTSMAN
TEDDINGTON, QUEEN DOWAGER

TEDDINGTON, WALDEGRAVE ARMS
TWICKENHAM, EEL PIE
TWICKENHAM, NELSON
UXBRIDGE, PRINCE OF WALES
WHITTON, ADMIRAL NELSON
WHITTON, WHITE HART
OFF TRADE
W11 Grogblossom
CLUBS
ISLEWORTH, Western Geophysical Social Club
W1 Polytechnic of Central London S.U. Bar, 104 Bolsover Street
OUTSIDE LONDON
ASCOT, CRANBOURNE TOWERS
BRIGHTLINGSEA, RAILWAY
BRIGHTON, EVENING STAR
BRIGHTON, SUSSEX YEOMAN
CATERHAM ON THE HILL, KING & QUEEN
CHERTSEY, CASTLE
COLCHESTER, ODD ONE OUT
CROXLEY GREEN, SPORTSMAN
EAST MOLESEY, KINGS ARMS
EGHAM, JOLLY FARMERS
EGHAM, PRINCE OF WALES
EGHAM, WHITE LION
KNEBWORTH (Herts), LYTTON ARMS
KNOWL HILL (Berks), OLD DEVIL
LALEHAM, FEATHERS
LEWES, GARDENERS ARMS
MANCHESTER, JOLLY ANGLERS
MORTIMER WEST END (Hants), RED LION
OUTWOOD (Surrey), DOG & DUCK
POTTERS BAR, CHEQUERS
READING, HOBGOBLIN
READING, HOP LEAF
READING, MONKS RETREAT
READING, THREE GUINEAS
ROTHERWICK (Hants), COACH & HORSES
SALISBURY, WYNDHAM ARMS
STEVENAGE, RED LION
SOUTHAMPTON, WATERLOO ARMS
STAFFORD, STAFFORD ARMS
STAINES, CAVALIER
STAINES, PHOENIX
STOW MARIES (Essex), PRINCE OF WALES
STRATFIELD SAYE (Hants), NEW INN
SUNBURY, FLOWER POT
SUNBURY, HARE & HOUNDS
SUNNINGDALE, ROYAL OAK
TILLINGHAM (Essex), CAP & FEATHERS
WALTON ON THAMES, REGENT CLUB
WATFORD, WEST HERTS SPORTS CLUB
WEYBRIDGE, PRINCE OF WALES
WHITCHURCH (Hants), YE OLDE BREWERY INN
WORCESTER, BREWERY TAP & BREWERY
WORTHING, VINE

CROYDON REAL ALE FESTIVAL

19TH to 21ST OCTOBER 1995

**FEATURING 50+ ALES
FROM THE SMALLER
BREWERS OF THE UK**

REAL CIDER & PERRY



**HOT & COLD FOOD
ALL SESSIONS**

**FOREIGN
BOTTLED BEERS**

**RUSKIN HOUSE
COOMBE ROAD CROYDON**

(Entrance in Park Lane)

Thursday 19th 5pm to 10.30pm - £2

Friday 20th 12noon to 3pm - Free, 3pm to 10.30pm - £2

Saturday 21st 11am to 6pm (or while stocks last) - £1.50

Discount for CAMRA Members all sessions (except Friday lunchtime)

(The Organisers reserve the right to refuse admission)

**RUSKIN
CLUB
HOUSE**

**ORGANISED BY CROYDON & SUTTON CAMRA
IN ASSOCIATION WITH RUSKIN HOUSE CLUB**

