

Sept
1995

LONDON



30p

DRINKER



The County Arms, Isleworth

Photo by: Doug Scott

Vol 17

Produced by the London branches of the Campaign for Real Ale Ltd

No. 8

Where to Buy London Drinker

The following is a list of all the current outlets for London Drinker of which the editors have been informed. Full addresses are only given where there are two pubs of the same name in the same postal district.

OUTLETS – EAST and SOUTH EAST PUBS

EC1 ARTILLERY ARMS
EC1 BISHOPS FINGER
EC1 MASQUE HAUNT
EC1 PHEASANT & FIRKIN
EC1 ROSEBERRY
EC1 SEKFORDE ARMS
EC1 SHAKESPEARE
EC2 OLD MONK
EC3 SWAN
EC4 BLACK FRIAR
EC4 OLD MONK
E1 BLACK BULL
E1 LORD RODNEYS HEAD
E2 CAMDENS HEAD
E3 IMPERIAL CROWN
E5 PRINCE OF WALES
E6 MILLERS WELL
E8 LADY DIANA
E9 FALCON & FIRKIN
E9 ROYAL STANDARD
E10 DRUM
E11 GEORGE
E13 VILLAGE
E14 QUEEN'S HEAD
E15 GOLDEN GROVE
E16 DAGENHAM, LORD DENHAM
NE1 ANCHOR & HOPE
NE1 COPPER
NE1 FOUNDERS ARMS
NE1 GEORGE INN
NE1 GEORGE TAVERN
NE1 GOOSE & FIRKIN
NE1 GRAPES
NE1 HORNIMAN AT HAYS
NE1 KINGS ARMS
SE1 MARKET PORTER
SE1 MULBERRY BUSH
SE1 OLD BRIDGE HOUSE
SE1 PRINCE WILLIAM HENRY
SE1 SHIP, 68 Borough Road
SE1 ST GEORGES TAVERN
SE1 ST JOHNS TAVERN
SE1 TRINITY ARMS
SE1 WHEATSHEAF
SE1 WHITE HART, Cornwall Street
SE3 BRITISH OAK
SE3 HARE & BILLET
SE3 PRINCESS OF WALES
SE5 FOX ON THE HILL
SE5 PHOENIX & FIRKIN
SE6 BLACK HORSE & HARROW
SE6 TIGERS HEAD
SE7 McDONNELLS
SE8 CRYSTAL PALACE TAVERN
SE8 DOG & BELL
SE8 ROYAL GEORGE
SE9 BANKERS DRAFT
SE10 ADMIRAL HARDY
SE10 ASHBURNHAM ARMS
SE10 RICHARD I
SE13 FOX & FIRKIN
SE13 HOGS HEAD
SE16 BLACKSMITHS ARMS
SE16 MANOR TAVERN
SE16 MOBY DICK
SE18 COOPERS ARMS (Plaisted's)
SE18 EARL OF CHATHAM

SE18 ROSE'S (PRINCE ALBERT)
SE18 VILLAGE BLACKSMITH
SE19 ROYAL ALBERT
SE20 MOON & STARS
SE22 CRYSTAL PALACE TAVERN
SE25 ALLIANCE
SE25 GOAT HOUSE
SE26 DULWICH WOOD HOUSE
ADDISCOMBE, CLARET WINE BAR
BARKING, BARKING DOG
BARKINGSIDE, NEW FAIRLOP OAK
BEXLEY, BLUE ANCHOR
CROYDON, ARKWRIGHTS WHEEL
CROYDON, BUILDERS ARMS
CROYDON, DOG & BULL
CROYDON, FIDDLER & FIRKIN
CROYDON, GEORGE
CROYDON, PRINCESS ROYAL
CROYDON, ROYAL STANDARD
ILFORD, GREAT SPOON OF ILFORD
LOUGHTON, LAST POST
PURLEY, FOXLEY HATCH
SOUTH CROYDON, FIDDLER & FIRKIN
SOUTH CROYDON, RAIL VIEW
WALLINGTON, WHISPERING MOON
CLUBS
SE1 LENSBRURY BAR, SHELL INTERNATIONAL
SE3 BLACKHEATH & NEWBRIDGE WMC
SE9 HOWARD CLUB
SE13 LEWISHAM LABOUR CLUB
SE18 PLUMSTEAD RADICAL CLUB
CROYDON, RUSKIN HOUSE
OFF TRADE
SE3 Bitter Experience, 129 Lee Road
BROMLEY, Bitter End, 139 Masons Hill
OUTLETS – WEST CENTRAL and NORTH PUBS
WC1 CALTHORPE ARMS
WC1 CITTIE OF YORKE
WC1 ENTERPRISE
WC1 OLD MONK
WC1 PAKENHAM ARMS
WC1 PRINCESS LOUISE
WC1 RUGBY TAVERN
WC1 SUN
WC1 THREE CUPS
WC1 UNIVERSITY OF LONDON
WC2 CROWN & ANCHOR
WC2 FULMAR & FIRKIN
WC2 GEORGE IV
WC2 HOGS HEAD
WC2 MARQUESS OF ANGLESEY
WC2 MOON & SIXPENCE
N1 129 UPPER STREET
N1 COMPTON ARMS
N1 EARL OF RADNOR
N1 GEORGE & VULTURE
N1 MALT & HOPS
N1 MARQUESS TAVERN
N1 PRINCE ARTHUR
N1 WENLOCK ARMS
N2 WELCH'S ALE HOUSE
N4 OLD SUFFOLK PUNCH BOWL
N4 TAP & SPILE
N4 WHITE LION OF MORTIMER

N4 WORLDS END
N6 OLD GATE HOUSE
N7 HOLLOWAY
N8 ELBOW ROOM
N8 RAILWAY TAVERN
N8 TOLL GATE
N9 LAMB
N11 BANKERS DRAFT
N12 TALLY HO
N13 WHOLE HOG
N16 NOBODY INN
N16 ROCHESTER CASTLE
N16 SHAKESPEARE
N17 CLUTTERBUCKS
N17 ELBOW ROOM
N17 NEW MOON
N19 DOG
N21 DOG & DUCK
N21 HALF MOON
N21 ORANGE TREE
N22 STARTING GATE
BARNET, MOON UNDER WATER
BARNET, WHITE LION
BARNET, YE OLDE MONKEN HOLT
COCKFOSTERS, TRENT TAVERN
EDGWARE, BLACKING BOTTLE
ENFIELD, MOON UNDER WATER
ENFIELD, OLD WHEATSHEAF
NEW BARNET, BUILDERS ARMS
NEW BARNET, LORD KITCHENER
NEW BARNET, RAILWAY BELL
OUTLETS – NORTH WEST PUBS
NW1 LORD NELSON
NW1 QUINNS
NW1 SPREAD EAGLE
NW2 BEATEN DOCKET
NW3 FLASK TAVERN
NW3 THREE HORSESHOES
NW4 CHEQUERS
NW4 GRIFYHOUND
NW4 PICKLED NEWT
NW8 PRINCESS ROYAL
NW9 J.J. MOONS
NW9 MOON UNDER WATER
NW9 WHITE LION OF MORTIMER
NW10 COLISEUM
NW10 GRAND JUNCTION ARMS
NW10 OUTSIDE INN
NW11 WHITE SWAN
HAREFIELD, PLOUGH
HARROW, MOON ON THE HILL
HARROW WEALD, SEVEN BALLS
HATCH END, MOON & SIXPENCE
KENTON, NEW MOON
NORTH HARROW, J.J. MOONS
RUISLIP, J.J. MOONS
SOUTH HARROW, J.J. MOONS
STANMORE, MALT HOUSE
WEALDSTONE, ROYAL OAK
WEALDSTONE, SARSEN STONE
WEMBLEY, J.J. MOONS
OFF TRADE
N1 Beer Shop, Pitfield Street
NW6 Grogglossoms, 235 West End Lane
CLUBS
NW4 HENDON SOCIAL CLUB, Middlesex University Bus. School

Continued on page 39

EDITORIAL

Over the last couple of months or so you will no doubt have noticed that we have been giving a fair amount of space to the ongoing story that Sam Smiths of Tadcaster are withdrawing cask conditioned beer from their London pubs. So far, we have not been able to ascertain how many of their twenty or so London pubs will end up without real beer but to date I have only received confirmation of two pubs where it has already disappeared, the Swiss Cottage in Finchley Road, NW3 and the Gazebo in Kingston. Initial correspondence from the brewery indicated that only "very traditional" pubs would continue to receive cask beer by special delivery direct from the brewery indicating that the majority of their London pubs would be going over to keg beer. Whether they will be reviewing this number, only time will tell. However things end up I feel sure that Sam Smiths will claim that this was their policy all along; they are not a company which is noted for bowing to public opinion.

Let's just pause here and clear up one point about this so-called "nitrokeg" beer – it is keg beer, no more and no less. It is treated in just the same way as any other keg beer, filtered and (in most cases) pasteurised so that it dead. It is just as much a keg beer as the Watneys Red Barrel which was the focus of CAMRA's attentions way back in the 1970's. Sam Smith's Sovereign may well be a better product than Red Barrel by virtue of the ingredients put into it but it is STILL a keg beer. The only difference is that the gas used to serve it is not pure carbon dioxide but a mixture of CO₂ with nitrogen, mainly the latter. The tap through which it is dispensed contains a very small orifice which makes the bubbles of nitrogen very small so that they form the tight "northern" head. This incidentally is also the way in which the widget in certain canned beers works. The reason for using nitrogen is that it is hardly soluble in the beer at all so there is not a lot to come out of solution to form the head. If they were to use all CO₂ the beer would come out as all froth and it would take forever to serve a pint.

Now the real point of this editorial is not just to be the next in the queue to have a go at Sam Smiths. It is more to highlight the possibilities for drinkers in other breweries pubs, particularly those of the few big brewers (seemingly becoming fewer and bigger all the time) who control the vast majority of the pubs we drink in. If they see keg beer taking over from real beer in pubs belonging to the company which prides

itself on being Yorkshire's Oldest Brewery, steeped in tradition (and all the rest of it), it will just give them even more encouragement to do the same thing themselves, not that they are exactly back pedalling at the moment. They are already pushing mixed gas dispense as being "more like" traditional beer because it is less fizzy than the old style keg (Oops, I nearly called it traditional keg then!). This shows the same mentality as that which produced the infamous Bass "draught beer in a can" advert which tried to hoodwink the customer into believing that what came out of the can was the same as came out of the pump. In fact, to me it seems that by some perverted logic they may be trying to tempt punters back into pubs by saying that "you can now get beer in a pub just like you get from a can with a widget in it" – now there's a point to ponder!

Maybe we are barking up the wrong tree. Maybe the brewers are sidelining the traditional beer drinkers and their proclaimers and spending all their efforts on converting the can at home drinkers over to bulk packaged beer.

If there is insufficient space, please omit the following paragraph:

Incidentally, on the subject of widgets, I was shopping in one of my local supermarkets a couple of years ago and wanted some beer to drink at home as I didn't have any proper bottled (eg Trappist) beers indoors. I saw some cans of Marston's Pedigree with widgets and thought I would try a four pack of them. I chose Pedigree on the basis that as an excellent beer with lots of flavour in real form, it might survive the knocking about. So I took the beer home and tried a can. To say that I was disappointed would be a major understatement; not only could I not identify the flavour as anything like Marston's Pedigree – I could not positively identify the flavour as beer (I kid you not). I tried with the other three cans but they failed to alter my opinion.

As a matter of interest, one of my fellow editors tells me that he was speaking to Sam Smith's southern area sales manager at the Great British Beer Festival last month. I gather that the first he had heard about Sam's taking real beer out of their London pubs was when he read about it in the London Drinker. He was given eight complimentary copies each of the July and August editions to take to a meeting he was due to have at the brewery a few days later.

It's a funny old World, they tell me.

Andy Pirson

The Hop Back Brewery plc

Cordially invite you to their

1st London Beer Festival

to be held at

THE SULTAN

78 Norman Road SW19
(off Haydons Road)

1st, 2nd, 3rd September 1995

The full range of Hop Back beers available
plus

Batemans XB

Harveys XX Mild

Cotleigh Tawny

Cheriton Pots

Taylors Landlord

Exmoor Gold

and many more

For more details please contact The Sultan
on 0181 542 4532

We would like to take this opportunity to welcome
new manager **Dee Underwood** to The Sultan

IDLE MOMENTS

Hello again. I must admit to being a little confused – no, more than usual, I mean. I've had a card from regular correspondent Stephen Fothergill which reads as follows:

"Regarding London Drinker page 6, question No.9, correction. It was a "Nocturne" by James McNeil Whistler R.A. of the River Thames at Sundown exhibited at the Royal Academy that prompted John Ruskin to comment in the editorial columns of the Times newspaper that 'it were as though a pot of paint had been thrown in the face of the public.' There was then a legal action brought by Whistler, damages one penny."

I've looked back through the editions in question (July for the question and August for the answer) and am at a loss to find the mistake being corrected. The question and answer as printed were as follows:

- Q. Which artist's work was described by Ruskin as a "pot of paint flung in the public face"?
- A. James Abbott McNeill Whistler (the one with the Mother)

Okay, so I did not give the full story but I can't find anything actually wrong unless you mean putting "public face" instead of "face of the public".

Anyway, it's a different way to start the column. Now let's get on with this month's, starting as always with the answers to last month's number puzzles:

1. 10 Wickets Down and you are All Out
2. 1876 First Cricket Test Match Between England and Australia
3. 6 is the Number of the Queen's Grandchildren
4. 35,840 Ounces in a Ton
5. 220 Yards in a Furlong
6. 13 Players on a Cricket Pitch
7. 19 Fluid Ounces in a "Whitbread Pint"
8. 3 Tudor Kings of England
9. 1980 Last Great British Beer Festival Held at Alexandra Palace
10. 9 Countries Play Test Cricket

And now here are this month's:

1. 5 L in a L
2. 9 MM
3. 3 P for a SD on the FP

4. 568 ML in a P of B
5. 38 S on the PL
6. 2 E in a Y (O in S and O in A)
7. 60 OP in a C
8. 6 D is H a G
9. 3 TU the EC
10. 12 B is the C of a SG

There's one thing about long introductory paragraphs - I don't have to put much filling in between the puzzles. So here we are with the solutions to last month's brewery anagrams:

- | | |
|------------------|-------------|
| 1. RE FIREMEN | FREEMINER |
| 2. HOLD WARM | WORLDHAM |
| 3. WOUND ROBOT | BURTONWOOD |
| 4. MILD LOL | OLD MILL |
| 5. ROLL JOY, REG | JOLLY ROGER |

And let's get straight on with this month's:

1. SOD ATE SOW
2. LEAVE N.Y. LEN
3. BREWS ONE YEAR
4. SHAPED RING
5. HAD RAIN

And now it's 5BY4 time again. This month I've called it "Old Rockers Corner"; those of you who share my interest in motorbikes will instantly see why. All you have to do is match the model names in the right hand column with the manufacturers in the one on the left. I'm afraid that for one name I've had to go back to the Thirties and one model was virtually extinct post war and only being built to order. The reason is that by the fifties and sixties lots of bikes were given type numbers (like G50 etc.) which don't sound as evocative. (*Get on with it...Ed*) So here they are then:

- | | |
|------------------|--------------------|
| 1. Triumph | A. Viper |
| 2. Norton | B. Golden Flash |
| 3. Vincent | C. Thunderbird |
| 4. Scott | D. Silver Hawk |
| 5. Royal Enfield | E. Red Hunter |
| 6. Douglas | F. Interceptor |
| 7. Matchless | G. Dominator |
| 8. Velocette | H. Flying Squirrel |
| 9. Ariel | I. Rapide |
| 10. BSA | J. Dragonfly |

As always the solution is at the end, following the general knowledge questions.

And now it is General Knowledge time, last month's answers first:

1. Twenty
2. The Government Chief Whip
3. John le Carré
4. Letchworth, Hertfordshire (1903)
5. The Caspian Sea
6. C.S.Forester
7. Grub Street
8. Furniture and interior design.
9. Bedford Gaol
10. Christian

And without more ado (and no more silly comments about running out of ado), here are this month's questions:

1. What make and model of car went out of production in July after about a million were built over a period of around twenty years?
2. Altogether I.K.Brunel designed three ships. What were they called (in chronological order)?
3. A 17th century house owned by the National Trust in Sussex reopened in June following complete restoration after a catastrophic fire in 1989. What is it called?
4. What do the Sealyham, the Cairn and the Dandie Dinmont have in common?
5. What was the "Great House of Easement" at Hampton Court Palace?
6. What is pargeting?
7. What country has a name which in its own language means "land of the pure"?
8. What two football clubs are jointly referred to as "The Old Firm"?
9. Which president of the USA, assassinated in 1881, shares his name with a cartoon cat?
10. What is the name of the measurement which is 7.92 inches long (or one thousandth of a chain)?

Well that's about it for another month, so I shall leave you with the answers to this month's 5BY4:

1-C, 2-G, 3-I, 4-H, 5-F, 6-J, 7-D, 8-A, 9-E, 10-B.

See you next time.

Andy Pirson

SNAP HAPPY AT THE PHOTOGRAPHER & FIRKIN

Lights, cameras, action! It all happened at the official opening party of the Photographer & Firkin, 23-25 Ealing High Street, Ealing when staff and customers were CAUGHT on



CAMERA as part of the pub's opening celebrations.

The pub, which has been built on the site of the old Lamertons Department Store, is a Firkin Brewery pub, FOCUSING on real ales which are DEVELOPED in the pub's on-site brewery.

The brewery PRODUCES a selection of real ales including Lens Bitter (abv 3.5%) Photographer Ale (abv 4.3%), a Dark Room Stout and Dogbolter (abv 5.6%).

KING & BARNES WINS AT OLYMPIA

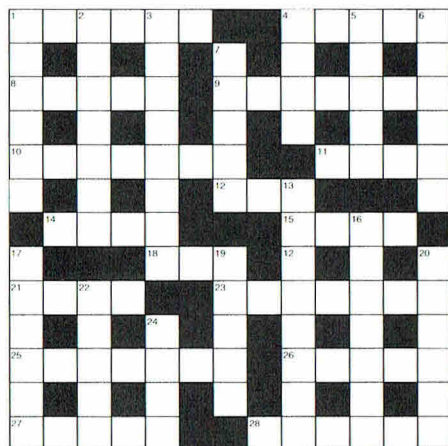
Britain's most important Beer Awards were announced at Olympia and judges at CAMRA's Great British Beer Festival voted King & Barnes FESTIVE ALE as Britain's best bottle-conditioned beer.

Second and third places went to Gales Prize Old Ale and Worthington White Shield whilst other finalists were Burton Bridge Porter, Courage Imperial Russian, Eldridge Pope Thomas Hardy Ale and Shepherd Neame Spitfire.

All of Britain's bottle-conditioned beers were entered for the competition. Jubilant brewer Philip Haworth said, "This is great confirmation of festive's phenomenal success where sales this year are up by over 70%. Much of this increase has been due to our success in the fast growing export market which currently takes nearly 49% of our production. However, we are also extremely conscious of our role in our home market where we are the acknowledged leaders in the development of bottle-conditioned beers."

LONDON DRINKER CROSSWORD

Compiled by DAVE QUINTON



Name

Address

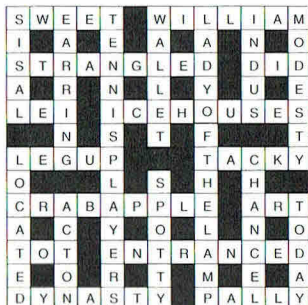
.....

All correct entries received by first post on 27th September will be entered into a draw for the prize.

Prize winner will be announced in the November London Drinker.
Solution next month.

All entries to be submitted to:
London Drinker Crossword
25 Valens House
Upper Tulse Hill
London SW2 2RX

LAST MONTH'S SOLUTION



£10 PRIZE TO BE WON

ACROSS

1. Sent to wrong depots. [6]
4. Sink Tory debtor? [5]
8. Cook while in decay. [5]
9. Right tosser cocked up lists. [7]
10. Finish with mutant rodents constantly present. [7]
11. Giant lost letter, I'm afraid. [4]
12. Flier ejected tail equipment. [3]
14. Plan is left in pocket. [4]
15. Eric's gone off food. [4]
18. Look back and forth. [3]
21. State where it's fashionable to doff cap. [4]
23. For the most part aiming to get drug. [7]
25. The first strange creature to make instrument. [7]
26. Leading charioteer unwise, causing accident. [5]
27. Drunken dances. [5]
28. Second class city suffers. [6]

DOWN

1. Drink carrier. [6]
2. Tip of corn in shoe causes shock. [7]
3. Guess I am in oriental country. [8]
4. Price of a plastic ostrich. [4]
5. Welsh low-lifer's circle. [5]
6. Battle against disturbed relative. [6]
7. Way to nail right in. [5]
13. In the news. Redhead features. Hot! [8]
16. Automobile epoch involves any amount of slaughter. [7]
17. Goat fat. [6]
19. Fear the enemy's holding ground. [5]
20. Measures islands. [6]
22. Sailor wear produces insult. [5]
24. Spilt soup makes work. [4]

Winner of the prize for the July Crossword:
Robert Young, Royal Hospital, Chelsea.

Other correct entries were received from:
Aaron Aardvark, Paul Adams, Robin Bolt, Geoff Broadley, Fin Burns, The Bean, John Blundell, Andy Camroux, A.P.Comaish, Robert Day, Kathryn Everett, Mike Farrelly, B.H.Fletcher, Perry French, Paul Gray, J.E.Green, Giuseppe Gulaperto, Guy & Alison, John Heath, Will Hill, Paul Hopkinson, Hugh Janus, St. John's Taverners, T.V.Kemp, Doug King & Queen, Pete Large, Terry Lavell, Dylan Mason, M.J.Moran, Al Mountain, Terry Neill, Rab Noolas, H.O'Connor, David Oddy, Stuart Osgood, Richard, Julie & Dennis, Jim Richards, Super Scooper, Mrs A.Shafting, Beverley Smith, Peter Smith, Robert Stafford, Tarnya & Stephen, Bill Thackray, Troglodyte, Neil Walton, Tony Watkins, Wednesday Club (RIP), Martin Weedon, Spud Whale, Janet Wilcock, Susan Wilson, David Woodward, Yak (pregnant).
There was also one incorrect entry and one with no name. Please note that only entries on the original grid can be entered for the prize; photocopies are not acceptable.

THE FIRKIN BREWERY

**PUB BREWED ALES AVAILABLE
IN ALL FIRKINS:**

**3.5%ABV BITTER
4.3%ABV BEST BITTER
5.6%ABV DOGBOLTER**



THE FIRKIN SPECIAL BREWS:

**3.4%ABV MILD
5.0%ABV GOLDEN GLORY
4.6%ABV FIRKIN STOUT**

**ALSO FEATURING OUR VERY
OWN FIRKIN BREWED
GUEST ALES OF THE MONTH.**

**FIRKIN FODDER,
FRESHLY MADE ON THE
PREMISES -
JUST LIKE OUR BEER!!**

FREEDOM & FIRKIN

196 Teesing High Street, London SW17 0SL • Tel: 0181 672 5794

FALCON & FIRKIN

360 Victoria Park Rd, London E9 7BT • Tel: 0181 985 0693

FARRIER & FIRKIN

74-76 York St, London W1H 1DP • Tel: 0171 267 1513

FERRET & FIRKIN

114 Lots Rd, London SW10 0RJ • Tel: 0171 352 6645

FETTLER & FIRKIN

15 Chelworth St, London W2 3QJ • Tel: 0171 773 5918

FIDDLER & FIRKIN

14 South End, Croydon CR0 1DL • Tel: 0181 680 9728

FIMMOCK & FIRKIN

100 Upper St, London N1 0NP • Tel: 0171 226 3467

FLICKER & FIRKIN

1 Dukes St, Richmond, Surrey TW9 1HP • Tel: 0181 332 7807

FRIGATE & FIRKIN - OLYMPIA

24 Blythe Rd, London W14 0HA • Tel: 0171 602 1412

FLOWER & FIRKIN

Kew Gardens Station, Surrey TW9 3BZ • Tel: 0181 332 1162

PHAROAH & FIRKIN

90/90a Fulham High St, London SW6 • Tel: 0171 741 0742

FLAUTIST & FIRKIN

588 Mile End Rd, Bow, London E3 4PL • Tel: 0181 983 6634

FLAUNDER & FIRKIN

54 Holloway Rd, London N7 8JP • Tel: 0171 609 2574

FOX & FIRKIN

316 Lewisham High St, London SE13 5HL • Tel: 0181 690 8975

FRIAR & FIRKIN

120 Euston Rd, London NW1 2AL • Tel: 0171 387 2419

FRIESIAN & FIRKIN

87 Rectory Grove, London SW4 0DR • Tel: 0171 622 4666

FINANCIER & FIRKIN

43 Market Place, Kingston Upon Thames KT1 1JQ • Tel: 0181 974 8223

FISH & FIRKIN

53 Alexandra Street, Southend SS2 6ES • Tel: 01702 391984

FLICKER & FIRKIN

1 Dukes Street, Richmond TW9 1HP • Tel: 0181 332 7807

FLYNAN & FIRKIN

166 170 Shaftesbury Avenue, London WC2H 8JR • Tel: 0171 240 7109

FROC & FIRKIN

96 Ladbroke Grove, London W11 1PY • Tel: 0171 729 5663

PHOTOGRAPHER & FIRKIN

23 25 Ealing High Street, London W3 6ND • Tel: 0181 567 1140

FUSILIER & FIRKIN

7-8 Chalk Farm Road, London NW1 2AL • Tel: 0171 485 7858

FULMAR & FIRKIN

51 Parker Street, London WC2B 5PS • Tel: 0171 405 0590

GOOSE & FIRKIN

47 Borough Road, London SE1 1DR • Tel: 0171 403 3590

PHEASANT & FIRKIN

166 Goswell Road, London EC1 1DA • Tel: 0171 753 7479

PHEONIX & FIRKIN

Whiston Walk, London SE5 4BB • Tel: 0181 701 8287

USQUE AD MORTEM BIBENDUM

LETTERS TO THE EDITORS

Dear Editors,

Could you imagine the marketing gurus at Whitbread, S&N, Courage and Tetley allowing their northern beers to be served without their customary thick creamy head? Of course not – nor should they. Boddington, Theakston, John Smith's and Webster's have been traditionally been dispensed with sparklers, swan necks, quarter pint pulls etc. As a southern based beer fan I am happy, wherever I am, to drink these northern brews served in the traditional manner.

However, I take exception to being served southern beers in the northern style. Adnams's, Brakspear's, Wadworth's, Young's, Greene King, Fuller's, King & Barnes etc. etc. were not intended to be served via these devices. It is not authentic.

The use of such dispensing aids may in the opinion of the marketing men assist their appearance and desirability but to us southerners you are "knocking the guts out of the beer".

Please stop abusing the beer. Please set aside separate hand pumps for use with southern beers. Your efforts should be rewarded with happy drinkers from both ends of the country. Perhaps one of the CAMRA branches could pick up the concept of pubs using separate pumps for southern and northern beers, acknowledging the licensee's efforts to be authentic.

Yours in hope,

B A Wilkerson,

Broxbourne, Herts.

Editor's Comment:

Good idea Mr Wilkerson. Perhaps the branches in London will find a pub which is so careful about the dispense of its various beers and give it the publicity it deserves.

As an aside, would this ever have become a topic of conversation if the old Autovacs had not been outlawed by the environmental health authorities?

Andy Pirson

NEWS FROM YOUNG'S BREWERY

Small investors in Young's Brewery are to be offered a special deal to sell their shares.

Brewery chairman John Young told the company's annual meeting at Wandsworth town hall that the 2,870 people who own 100 or fewer shares – more than half the total number of shareholders – would not be charged the usual brokers' fee.

They would pay only one per cent, instead of the more usual two per cent, of the value of their shares, with no minimum charge, which is normally at least £10.

Mr Young made the announcement to more than 200 shareholders who had gathered at the first dry AGM for decades.

Youngs decided earlier in the year to call time on what had been labelled by many commentators as the biggest beano in the brewing industry.

Mr Young – who wore a pair of red boxing gloves to parry any awkward questions – told the AGM that the special offer to buy shares was to be introduced because many people had bought shares solely to entitle them to free food and drink at meetings.



The news that Youngs were no longer to spend £25,000 a year on quenching the thirsts and satisfying the appetites of shareholders received widespread coverage on radio and television and in newspapers throughout the world.

The media made much play of the pilfering – of whole hams, salmons and bottles of wine – that had marred many AGMs over the years.

At the height of its popularity – at the West Centre Hotel, Fulham, in 1985 – 1,574 shareholders turned up.

Views expressed in this publication are those of their individual authors and are not necessarily endorsed by the Editorial team or the Campaign for Real Ale Limited

REAP THE BEST OF
BRITISH REAL ALE
at
WETHERSPOON'S
SEPTEMBERFEST

Thursday 28th September
to Sunday 1st October

up to

30 CASK REAL ALES
only
£1.49 PER PINT

Festival Cider
only £1.49 per pint

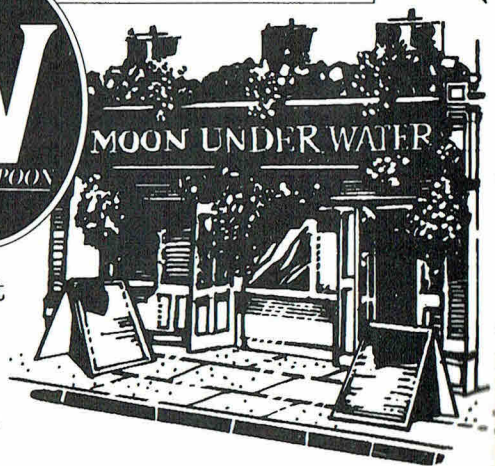
Mulled Wine
only £1.49 per glass

Lowenbrau Wheat Beer
only £1.49 per bottle

Directors Bitter *only* £1.30 per pint

Please ask for details of our
Septemberfest souvenirs

At a Wetherspoon Freehouse near you



BRANCH DIARY

If your branch is not mentioned/below, please ring the branch contact. Dates for September of which we have been notified are given below. Branches please send information to Andy Pirson. Branch contacts page 14.

LONDON PUBS GROUP: Wed 20 (7.30) Historic Pubs Crawl. Start WHITE LION, 14 Putney High Street, SW15 (south side of Putney Bridge).

CROYDON & SUTTON: Tue 5 (8.00) Crawl of South Norwood. Meet at GOAT HOUSE, 2 Penge Road (depart 9.00) – Sat 9 (7.30) Carshalton Crawl. Meet at WINDSOR CASTLE, 378 Carshalton Road (depart 8.30) – Mon 11 (8.00) Crawl of central Croydon. Meet at ARKWRIGHTS WHEEL, 151 North End (depart 9.00) – Sat 16 (7.30) Sutton Crawl. Meet at NEW TOWN (Saloon Bar), 7 Lind Road (depart 8.15) – Thu 21 (8.00) South Croydon Crawl. Meet in the Public Bar of RAIL VIEW, 188 Selsdon Road (depart 8.45) – Thu 28 (8.00) Branch Meeting. DOG & BULL, 24 Surrey Street, Croydon.

ENFIELD & BARNET: Tue 5 (9.00) Social. RAT & CARROT, 80 Church Street, Lower Edmonton – Wed 13 (8.30) Informal Branch Meeting. CRICKETERS, 19 Chase Side Place, Enfield – Tue 19 (9.00) Social. RAILWAY TAVERN, 129 Hare Lane, Mill Hill (Bus 221, 240) – Thu 28 (9.00) Social & London Drinker Pickup. WHOLE HOG, 430 Green Lanes, Palmers Green

KINGSTON & LEATHERHEAD: Wed 8 (8.30) Branch Meeting. BRICKLAYERS ARMS, Hersham – Tue 26 Social & Pub of the Year Presentation. TWO BREWERS, Wood Street, Kingston

NORTH LONDON: Tue 5 (8.00) N1 Social. ISLAND QUEEN, 87 Noel Road then PRINCE ALBERT (9.00), 16 Elia Street (Angel tube) – Tue 12 (8.00) NW3 Social. THREE HORSESHOES, 28 Heath Street then FLASK (9.30), 14 Flask Walk (Hampstead tube) – Tue 19 (8.00) London Drinker Beer Festival First Planning Meeting. RUGBY TAVERN, Great James Street (Holborn/Russell Square tube) – Tue 26 (8.00) N7 Social. HERCULES, 504 Holloway Road then TAPPIT HEN (formerly Holloway) (9.30), 295 Holloway Road (Holloway tube) – Sun 1 Oct (1.30) All Day Sunday Social. PINEAPPLE, 51 Leverton Street, NW5 (Kentish Town tube) – Tue 3 Oct (8.30) Branch Meeting. WENLOCK ARMS, 26 Wenlock Street, N1 (Old Street BR/tube)

RICHMOND & HOUNSLOW: Sat 2 (12.00) Full Measure Action Day (with local press etc). WHITE HART, 70 High Street, Hampton (Buses 111, R68) – Tue 5 (8.00) Committee Meeting (open to all from 9.00). WHITE BEAR, 198 Kingsley Road, Hounslow – Mon 11 (7.30) Beer Festival Publicity Crawl. Start SAWYERS ARMS, 25 Ashford Road, Feltham – Thu 14 (7.30) Beer Festival Publicity Crawl. Start MOON UNDER WATER, 84/88 Staines Road, Hounslow – Mon 18 (7.30) Tentative Joint Social with Kingston & Leatherhead Branch in Kingston, including Beer Festival Publicity Crawl. Phone Branch Contact nearer the date for details – Thu 28 to Sat 30 FOURTH FELTHAM BEER FESTIVAL. See advert for details – ADVANCE NOTICE: Thu 26 Oct Branch 21st Birthday Celebration. WHITE HART, Hampton. Further details next month.

SOUTH EAST LONDON: Mon 4 (8.00) Branch & Committee Meeting. CRYSTAL PALACE TAVERN, Tanners Hill, SE8 – Thu 21 (8.00) Social. TIGERS HEAD, 350 Bromley Road, Bellingham.

SOUTH WEST ESSEX: Wed 6 to Sat 9 (11.00-4.00 & 5.00-11.00) CHAPPEL BEER FESTIVAL, East Anglian Railway Museum, Chappel & Wakes Colne Station – Wed 13 (8.30) Branch Meeting. PLOUGH INN, off Sabines Road, Navestock Heath (OS: TQ538970) – Tue 19 (8.30) Darts Vs Herts/Essex Borders. CHEQUERS, The Green, Matching Green – Thu 28 (8.30) Social. PIT BAR, Queens Theatre, Billet Lane, Hornchurch – Tue 3 Oct (8.30) Social. SHIP, Princess Margaret Road, East Tilbury.

SOUTH WEST LONDON: Sat 2 (5.00) Celebration of Introduction of Lined Glasses at the PRIORY ARMS, 83 Lansdowne Way, SW8. Part of the day of Action for Full Measure – Thu 7 (7.30) Open Branch Committee & Festival Committee Meetings. PRINCE OF WALES, 270 Cavendish Road, Balham, SW11 – Tue 19 (8.00) Crawl of Putney. Meet P SHANNONS,

Continued on page 13

WIN A WEEKEND FOR TWO IN PARIS IN

THE GREAT FAR EAST

LONDON PUB

TREASURE HUNT

SATURDAY 26TH AUGUST -

SUNDAY 3RD SEPTEMBER

VISIT PARTICIPATING PUBS IN ANY ORDER
COLLECTING ANSWERS TO THESE SPECIAL CLUES
AND YOU CAN WIN ONE OF THESE GREAT PRIZES



- 1ST WEEKEND FOR TWO IN PARIS
2ND WEEKEND FOR TWO AT A HOLIDAY INN
(MAINLAND BRITAIN)
3RD PEPSI MAX MOUNTAIN BIKE
4TH-5TH THREE COURSE MEAL FOR TWO AT
THE EAGLE TOBY RESTAURANT
6TH-10TH WHOLE CASES OF PREMIUM BOTTLED LAGER

THE HEATHCOTE

(GROVE GREEN RD, LEYTONSTONE)

THE CUCKFIELD

(HIGH STREET, WANSTEAD)

THE GEORGE

(HIGH ROAD, SOUTH WOODFORD)

THE WHITE HART

(HIGH ROAD, SOUTH WOODFORD)

THE NAPIER ARMS

(WOODFORD NEW ROAD, SOUTH WOODFORD)

THE RISING SUN

(WOODFORD NEW ROAD, SOUTH WOODFORD)

How many benches are in the beer garden?

How many wall lamps in the conservatory?

How many gnomes on the lamp?

Where is the Daimler car?

Which letter is on the mirror in the main bar?

What are the pigs doing in the clock?

BONUS

EVERY ONE COMPLETING THE EVENT RECEIVES A SPECIAL
LIMITED EDITION BADGED PINT GLASS.

THE FIRST TEN PARTICIPANTS BACK TO EACH 'START' PUB WIN
SPECIAL LIMITED EDITION EVENT T-SHIRTS.

• NO PURCHASE NECESSARY • RAISING FUNDS FOR THE MACMILLAN NURSES APPEAL •

Putney High Street then SPOTTED HORSE (8.45); FOX & HOUNDS (9.15); RAILWAY (9.45). (Early taste 7.00 at Green man, Putney Heath) – Sun 24 Branch Cricket Club Match. Abbey Rec, Morden Road, SW19.

WEST LONDON: Tue 12 (8.30) Canalside Social. BRIDGE HOUSE, 13 Westbourne Terrace Road, W2 – Thu 21 (8.00) Branch Meeting. AUSTRALIAN, 29 Milner Street, SW3 – Tue 26 (8.00) Marylebone Meander. Start TURNERS ARMS, 26 Crawford Street, W1 then DUKE OF WELLINGTON (8.45), 94A Crawford Street; WINDSOR CASTLE (9.30), 29 Crawford Place; BEEHIVE (9.45), 7 Homer Street

WEST MIDDLESEX: Wed 6 (8.00) 21st Birthday Party. QUEENS HEAD, 123 High Street, Cranford – Tue 12 (8.00) Harrow Crawl. Start HALF MOON, 1 Roxeth Hill, Roxeth. Phone Branch Contact for more details – Wed 20 (8.30) Branch Meeting. LOAD OF HAY, Villiers Street, Uxbridge – Mon 25 (8.30) 1st B.O.B.9 Beerex Meeting. All interested please attend. By order (Phone Branch Contact for venue) – Thu 28 (8.30) Social & London Drinker Pickup. FOX & GOOSE, Hanger Lane, Alperton.

Deadline for the October edition, 1st September. Material for November to arrive by 2nd October. Please be sure to send all diary material to Andy Pirson.

“CUT BEER TAX TO SAVE JOBS” SAY FAMILY BREWERS

Jobs are being lost thanks to Britain's excessive beer tax and constant government interference in the industry. That's the message this month from the Independent Family Brewers of Britain (IFBB) on release of their latest statistics.

The beer market has shrunk, reflected by falling production volumes. Two years ago, the 38 member companies' annual production totalled 2.46 million bulk barrels (708 million pints). This has fallen by 3.1 per cent to 2.39 million bulk barrels (688 million pints).

IFBB members in 1992/3 employed 6463 people between them, excluding those in their managed houses. This has fallen by 5.8 per cent to 6150 people. The family brewers say the cut-backs are due to Britain's excise duty on beer being seven times as much as it is in France, exacerbated by OFT inquiries, MMC investigations and the Government's Beer Orders of 1990, which are still causing ripples of disruption through the industry.

“Personal” beer imports from the continent are equal to more than 58 per cent of the total beer production volume of the IFBB (around 22 breweries' worth of beer, or 400 million pints). This massive-scale importing of cheap Euro-booze is having a detrimental effect on pubs and breweries. The IFBB are concerned that further job losses will result if the Government does not take action.

“It's time for the Government to see sense,” said Anthony Fuller, Chairman of the IFBB. “Family brewers are proud of their strong feelings of responsibility to the local community and none want to cut jobs, but the industry is being undermined by the Government. The imports problem would not exist if British excise duties were brought into line with Europe.”

BACK NUMBERS

To date 182 editions of London Drinker have been issued: back numbers of the following are available:

1979: March, April, May, June, August, September, December.

1980: February, March, April, May, July, August, September, October, November, December.

1981: February, April, May, July, August, September, November, December.

1982: March, April, May, July, August, September, October, November, December.

1983: February, April, June, July, August, September, October, November, December.

1984: All issues (May one copy only)

1985 to date: All issues.

Available from Stan Tompkins, 122 Manor Way, Uxbridge, Middlesex UB8 2BH at 50p per copy, post free

NEW MEN ON BOARD AT YOUNGS

Youngs have announced four senior appointments to strengthen the company's board of directors and management team.

Roy Summers, who retired in June as a director of Scottish & Newcastle, joins the board of Youngs as a non-executive director.

He was managing director (production) of Scottish & Newcastle Breweries, the beer division of S&N, as well as chairman and managing director of Scottish & Newcastle Beer Production, and chairman of three other S&N subsidiaries, Moray Firth Maltings, Waverley Vintners and Canongate Technology.

Mr Summers, who is 60, is president of the Institute of Brewing, a member of the council of the Brewing Research Foundation International and a member of the board of management of the International Centre for Brewing and Distilling at Heriot-Watt University, Edinburgh.

Stephen Goodyear, 40, who takes up the new post of sales director at Youngs, has spent nearly all his working life with Courage.

He rose from salesman in the take-home trade in 1974 to national sales controller in the on-trade. For the past two years, he was director in charge of one of Courage's 20 regional business units, based at Lewes, East Sussex.

Robert Wheeler, 44, who has been Young's director of sales and marketing since 1991, takes on the new role of director of national accounts.

His responsibilities will include building up guest beer trade in pubs owned by the major

brewing companies and developing take-home sales.

William Mellor, 33, has joined Youngs as personnel manager from Thorn UK.

He started his career with the retail division of Whitbread and is the son of Bill Mellor, a former head brewer at Morlands of Abingdon, Oxfordshire.

COOKING WITH BEER

This month's recipe again comes from CCC Leisure Ltd. It is called SHRIMP CREOLE and serves four people.

INGREDIENTS

2 Pounds of raw shrimps or prawns, shelled and deveined

1/2 Cup of flour

1 Teaspoon of salt

1/4 Teaspoon of pepper

3 Tablespoons of butter

1/4 Cup of diced onions

1 1/2 Cups of beer

1 Cup of tomato sauce (not ketchup, use canned or water down puree)

1 Teaspoon of sugar

1 Bayleaf

METHOD

Wash and drain the shrimps/prawns. Dip in a mixture of the flour, salt and pepper. Melt the butter in a pan and lightly brown the shrimps and the onions. Add the beer, tomato sauce, sugar and bay leaf; bring to the boil and cook "gently" for 5 to 6 minutes. Taste for seasoning, serve on fluffy rice.

BRANCH CONTACTS

LONDON PUBS GROUP

BROMLEY

CROYDON & SUTTON

EAST LONDON & CITY

ENFIELD & BARNET

KINGSTON & LEATHERHEAD

JEFF PRIMM

See SOUTH EAST LONDON

PAUL EVERITT

ROY JENNER

DEREK SMITH

ALLAN MARSHALL

0171-973 3096

0181-686 5053 (H & W)

0181-806 7605 (H)

0181-805 1436 (H & W)

0181-942 9115 (H)

0171-918 3376 (W)

0181-742 0498 (H)

0181-746 8148 (W)

0181-384 7284 (H)

0181-658 5422 (H & W) -

No calls after 9.00pm

01708 765150 (H)

0181-542 3158 (H,W & Fax)

01923 221155 (H & W)

Fax: 01923 218625

0171-824 2408 (W)

0181-868 2540 (H)

01895 238592 (W)

NORTH LONDON

ALISON COX

RICHMOND & HOUNSLOW

BRIAN KIRTON

SOUTH EAST LONDON

TONY GIBSON

SOUTH WEST ESSEX

ANDREW CLIFTON

SOUTH WEST LONDON

MARTIN BUTLER

WATFORD & DISTRICT

TONY SMITH

WEST LONDON

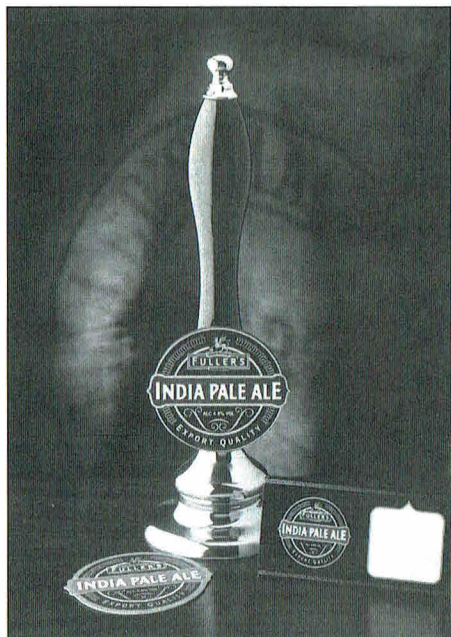
DI KEHOE

WEST MIDDLESEX

ALEX KOVAC



September looks as though it really will be an Indian Summer especially for fans of Fuller's India Pale Ale. Not only does this month herald the reappearance of this seasonal favourite in its draught beer form but also the arrival of a 550ml bottled



version that will be available throughout the year. India Pale Ale was introduced into the Fuller's portfolio in the Spring. The Brewery had produced an India Pale Ale at the turn of the century on which the current recipe is based, although the alcohol content has been reduced, in fact from 7.32% to 4.8%! The 90s version is a pale amber, all malt brew with a distinctive, pleasant bitterness originating from the Kentish Goldings Hops. The most common story behind the name, India Pale Ale, seems to be that a beer of that name was originally brewed in Burton-on-Trent in 1822 to be exported to the India Empire. To survive the journey the ale was heavily hopped and brewed to a high gravity so that it could slowly ferment during the long journey thus arriving in India in peak condition. However, Fuller's was sent an alternative tale from a Mr David Colloff whose great

grandfather was Russian and spelt his name Kolov. He narrates a story told to him by his father, "A Russian diplomat was in England and came across an "Excellent Beer", he then ordered a vast quantity to be sent to the Tzar. In the meantime, Britain fell out with Russia and the order, which by now was on board ship, was cancelled. The captain had to sell the cargo and did so to various public houses in the area. The name given to the beer was India Pale Ale because the ship was docked in "India Dock". Whatever the reason for the name, Fuller's will be brewing draught India Pale Ale until 27th October when it will be succeeded by another new draught beer, Old Winter Ale. More news on this brand in the November edition however readers can get a sneak preview when 550ml bottles of Old Winter Ale will also be on the shelves in all Fuller's outlets from 4th September.

The Lytton Arms

Old Knebworth, Herts

"NORTH HERTS PERMANENT BEER FESTIVAL"

★ UP TO 15 ALES AVAILABLE
EVERY SESSION

★ OVER 1250 REAL ALES IN
SEVEN YEARS

★ 100 BOTTLED BRITISH &
CONTINENTAL BEERS

★ 50 MALT WHISKIES

★ REGULAR MINI BEER
FESTIVALS

★ O'HAGANS SAUSAGES &
VARIETY OF CHEESES

★ 25 MINUTES WALK FROM
KNEBWORTH BR STATION

★ SCRUFFY LANDLORD &
THREE LEGGED CAT

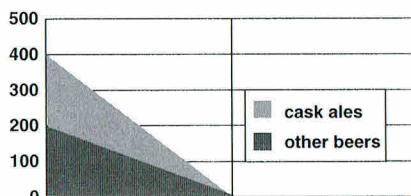
September 29th - October 1st
GREAT YORKSHIRE
BEER FESTIVAL

featuring 50 beers from Yorkshire
FOOD AVAILABLE ALL DAY
COMMEMORATIVE GLASS
For more details 01438 812312

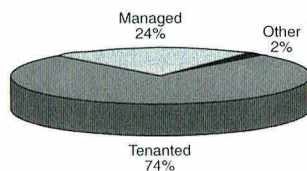
INDEPENDENTS' OUTPUT
Independent Family Brewers are the guardians of choice, variety and an important part of Britain's cultural heritage. The 38 members between them:

- brew 2.4 million Bulk Barrels (691 million pints) per year. 73 per cent of this production is cask conditioned (or "real") ale.
- produce 403 beer brands plus many seasonal beers. 199 are cask conditioned ales. Not including seasonal beers, IFBB members have added 30 new brands in two years.
- own 5,334 pubs. 3,909 are let through the traditional brewery tenancy system. 1,303 are managed by employees of the breweries.
- spend approximately £50 million per year on building services for their pubs – a valuable contribution to their local economies.
- employ 21,632 people in their breweries and managed houses. Many thousands more jobs are created in the small businesses operated by publicans in tenanted houses.

BEER BRANDS



PUBS



WANTED

The Enfield & Barnet Branch are looking for a CAMRA member in the Edgware Area to deliver the London Drinker to the Blacking Bottle each month. If you would like to help please contact the Branch contact, Derek Smith on 0181-805 1346.

CROYDON REAL ALE FESTIVAL

19TH to 21ST OCTOBER 1995



**RUSKIN HOUSE
COOMBE ROAD
CROYDON**

Thursday 19th October - 5pm - 10.30pm

Friday 20th October - 12noon - 10.30pm

Saturday 21st October - 11am until beer runs out!



REAL ALE

FESTIVAL

2nd - 28th ~ 1995 ~ October

Nicholson's Free Houses have been purveyors of famous Real Ales from around the country for many years. In celebration of this they are offering over 30 Real Ales throughout their London estate during October.

To join us in celebrating this you can claim a

FREE PINT
of Draught Burton Ale

OR WIN A BARREL
of your favourite 'Festival Ale'.

For further information pick up a leaflet from a participating Nicholson's Free House during the Festival.

Antelope, 22 Eaton Terrace, SW1

Argyll Arms, 18 Argyll St, W1

Australian, 29 Milner St, SW3

Barley Mow, 8 Dorset Street, W1

Blackfriar, 174 Queen Victoria St, EC4

Bloomsbury Tavern, 236 Shaftesbury Avenue, WC2

Butlers Head, 11 Telegraph St, EC2

Catherine Wheel, 23 Kensington Church Street, W8

Clachan, 14 Kingly St, Regent St, W1

Clifton, 96 Clifton Hill, St Johns Wood, NW8

Coal Hole, 91 The Strand, WC2

Crown Tavern, 43 Clerkenwell Green, EC1

Devonshire Arms, 21 Devonshire St, Gt Portland St, W1

Dog & Duck, 18 Bateman St, Soho, W1

Doggett's Coat & Badge, 1 Blackfriars Bridge, SE1

Fox & Anchor, 116 Charterhouse St, EC1

Globe, 17 Bow St, WC2

Golden Lion, 25 King St, St James's, SW1

Horniman at Hays, Hays Galleria, Tooley St, SE1

Temster Arms, 17 Temster Terrace, W2

Magpie, 12 New St, EC2

Northumberland Arms, 43 Goodge St, W1

Old Bell, 96 Fleet St, EC4

Old Thameside Inn, Pickfords Wharf, Clunk St, SE1

Paxtons Head, 153 Knightsbridge, SW1

Punch Tavern, 99 Fleet St, EC4

Red Lion, 81 Lombard Court, EC3

Red Lion, 2 Duke of York St, Jermy St, SW1

Shelleys, 10 Stalford St, W1

Ship, 11 Talbot Court, EC3

Southwark Tavern, 22 Southwark St, SE1

Three Greyhounds, 25 Creek St, W1

Throgmorton's, 27 Throgmorton Street, EC2

Viaduct Tavern, 125 Newgate St, EC1

Walkers of Holborn, Norwich St, EC4

Walkers of Whitehall, 4 Craig Court, 15 Whitehall, SW1

Walkers of St James, 12A Duke St, St James's, SW1

Walkers of Fenchurch St, 18 London St, EC3

Williamsons Tavern, Crowland Court, off Bow Lane, EC4

THE CONTINUING SAGA OF SAMUEL SMITH'S

In the July and August editions were articles on the Samuel Smith's move to remove real ale from a number of their London pubs. As a result some readers have written to the brewery and we reproduce below correspondence to date.

Dear Editors,

After I had read the piece by Doug Scott in the July issue – "Real Sam Smiths To Go" – I wrote to the Managing Director of Samuel Smith to protest about the change to nitro-keg Sovereign.

In his reply, Humphrey Smith reported that sales of OBB are steadily declining in London and that "... about two thirds of the sales ... now consist of lager." Mr Smith went on to say that wooden cask Old Brewery Bitter is going to be kept on at the Bricklayers Arms, Gresse Street, W1 and the Rose and Crown, Newman Street, W1.

I am sorry that I do not have better news to pass on to your readers.

Yours faithfully,

Simon Haste
London E17

Letter to Sam Smith's

Dear Sir,

I wish to register my concern at what appears to be a move by Sam Smith's to remove Old Brewery Bitter and Museum Ale in their cask forms from the majority of your London pub estate, and replace them with nitro-keg Sovereign.

This will not be welcomed by those who enjoy a pint of good ale in London, particularly as your prices for cask ales have been some of the lowest in the Capital in recent times.

Although I am a Londoner, I first became aware of the pleasures of drinking your beers when I had the good fortune to be stationed at RAF Church Fenton during my service days in the Eighties. I hope that I will not be forced to travel back to my old haunts to enjoy a pint of Sam Smith's cask ale, when I had just become used to drinking it regularly in pubs close to where I work in Fitzrovia.

Please reconsider your policy.

Yours faithfully,

Simon Haste

Letter to Simon Haste from Samuel Smith

Dear Mr Haste

Thank you for your letter of July 25th.

We honestly believe our wooden cask Old Brewery Bitter tastes consistently better up here, where you first tried it, than in London having travelled 200 miles and having been double-

handled. While sales of our wooden cask Old Brewery Bitter have been rising up here for some years, in the few pubs we have in London it has been steadily declining, about two thirds of the sales in the pubs now consist of lager.

We are of course a small brewery but Fitzrovia happens to be the one area in London where we have a bit of a concentration of pubs, we intend to keep wooden cask Old Brewery Bitter as the bitter in the Bricklayers Arms, Gresse Street and the Rose and Crown, Newman Street. As you say we have not raised our prices except for excise increases since 1990 and we intend to hold them again this year.

Yours sincerely

Humphrey R W Smith

Dear Editors,

Please find enclosed a letter received from Samuel Smith, signed by a member of the controlling family!

A little advertising and promotion of Old Brewery Bitter is surely all that's wanted.

Yours sincerely,

Stephen J Fothergill, London SW6

Letter from Sam Smith's:

Dear Mr Fothergill,

Thank you for your letter of July 26th.

It is kind of you to say that our wooden cask Old Brewery Bitter is 'pure gold'. Close to home at Tadcaster we believe it is very good and for some years its sales have been growing in the north. On the other hand in the few London pubs that our small brewery has its sales have been steadily declining, some two thirds of these pubs' sales are now lager. We do not believe that wooden cask Old Brewery Bitter is consistently as good 200 miles away as it is close to home, due to the distance, double handling etc. We are still to continue with some wooden cask Old Brewery Bitter in the south but in the interests of consistency of product and quality control we are changing to Sovereign Bitter served by mixed gas in a few of the pubs.

Yours sincerely,

Humphrey R W Smith.

Editor's Comment:

When you suggest that all that is needed is a little advertising, it is not clear whether you

Continued on page 38

—BARKING AND DAGENHAM—

THE BARKING DOG
61 Station Parade, Barking.
THE LORD DENMAN
270-272 Heathway, Dagenham

—BARNET—

THE MOON UNDER WATER
148 High Street, Barnet.
THE WHITE LION OF MORTIMER
1 York Parade, West Hendon Broadway, NW9

THE RAILWAY BELL
13 East Barnet Road, New Barnet.
***THE MOON UNDER WATER**
10 Varley Parade, Colindale NW9

***THE TALLY HO**
749 High Road, North Finchley, N12

THE BLACKING BOTTLE
122-126 High Street, Edgware

—BEXLEY—

THE WRONG 'UN
214-216 The Broadway, Bexleyheath.

—BRENT—

J J MOON'S
553 Kingsbury Road, Kingsbury NW9
THE OUTSIDE INN
312-314 Neasden Lane, Neasden NW10

J J MOON'S
397 High Road, Wembley.
THE COLISEUM
Manor Park Road, Harlesden, NW10

—BROMLEY—

THE MOON AND STARS
164-166 High Street, Penge, SE20
THE HARVEST MOON
141-143 High Street, Orpington

—CAMDEN—

* * * **THE MAN IN THE MOON**
40-42 Chalk Farm Road, Camden NW1
THE BEATEN DOCKET
50-56 Cricklewood Broadway, Cricklewood NW2
* **THE THREE HORSESHOES**
28 Heath Street, Hampstead NW3

—CROYDON—

THE GEORGE
17-21 George Street, Croydon
THE MOON UNDER WATER
1327 London Road, Norbury SW16
THE FOXLEY HATCH
8-9 Russell Hill Road, Purley

—EALING—

THE RED LION AND PINEAPPLE
281 High Street, Acton, W3

—ENFIELD—

THE MOON UNDER WATER
115-117 Chase Side, Enfield.
THE WHOLE HOG
430-434 Green Lanes, Palmers Green N13
THE HALF MOON
749 Green Lanes, Winchmore Hill N21

- NOW**
- **The Moon on the Square**, Unit 30, The Centre, Feltham
 - **The Moon Under Water**, 53-55 Lichfield Street, Wolverhampton
 - **Wetherspoons**, 51-57 Chertsey Road, Woking
 - **The Lord Moon of the Mall**, 16-18 Whitehall, London SW1
 - **The Berkeley**, 15-19 Queens Road, Clifton, Bristol

OPENIN

- **The Standing Order**, 28-32 Iron Gate, Derby
- 6-12 Gladstone Road, Wimbledon
- 201 Midsummer Boulevard, Bouverie Square, Milton Keynes
- **Wetherspoons**, 49 Piccadilly, Manchester

* Pubs marked with an asterisk have a licence to open between 12 noon and 7pm on Sundays
*** Under a special licence, drinks can

THE BANKER'S DRAFT

36-38 Friern Barnet Road, New Southgate N11

THE LAMB

52-54 Church Street, Edmonton N9

—EPPING FOREST—

THE LAST POST

227 High Road, Loughton.

—GREENWICH—

THE BANKER'S DRAFT

80 High Street, Eltham SE9

—HACKNEY—

THE ROCHESTER CASTLE

145 High Street, Stoke Newington N16

—HAMMERSMITH—

THE MOON ON THE GREEN

172-174 Uxbridge Road, Shepherd's Bush W12

—HARINGEY—

THE OLD SUFFOK PUNCH

10-12 Grand Parade, Green Lanes, Harringay N4

THE NEW MOON

413 Lordship Lane, Tottenham N17

THE ELBOW ROOM

503-505 High Road, Tottenham N17

THE TOLL GATE

26-30 Turnpike Lane, Honesey N8

THE ELBOW ROOM

22 Topsfield Parade, Tottenham Lane, Crouch End N8

***THE GATE HOUSE**

1 North Hill, Highgate, N6

—HARROW—

J J MOON'S

3 Shaftesbury Parade, Shaftesbury Circle, South Harrow

THE MOON ON THE HILL

373-375 Station Road, Harrow

THE NEW MOON

25-26 Kenton Park Parade, Kenton Road, Harrow

THE MOON AND SIXPENCE

250 Uxbridge Road, Pinner

THE SARSEN STONE

32 High Street, Wealdstone

J J MOON'S

20 The Broadwalk, Pinner, North Harrow

THE VILLAGE INN

402-408 Rayners Lane, Pinner

THE MAN IN THE MOON

1 Buckingham Parade, Stanmore

—HAVERING—

J J MOON'S

Unit 3, 46-62 High Street, Hornchurch

THE MOON AND STARS

99-101 South Street, Romford

—HILLINGDON—

J J MOON'S

12 Victoria Road, Russill Manor

THE MOON UNDER WATER

10-11 Broadway Parade, Coldharbour Lane, Hayes

J J MOON'S

Terminal Four, (Airsides), Heathrow Airport, Hounslow

WETHERSPOONS

Terminal Four, (Landside), Heathrow Airport, Hounslow

THE MOON AND SIXPENCE

1250-1256 Uxbridge Road, Hayes End

THE SYLVAN MOON

27 Green Lane, Northwood



OPEN

- **The Moon and Spoon**, 86-88 High Street, Slough, Berkshire
- **Wetherspoons**, Aberconway Road, Morden, Surrey
- **Wetherspoons**, 552-556 London Road, North Cheam
- **The Commercial Rooms**, Corn Street, Bristol
- **The Moon Under Water**, 68-74 Deansgate, Manchester

CLOSED SOON

- Charlotte Row, Liverpool
- 78-92 Foregate Street, Chester
- 93-97 Lord Street, Southport

and allow children in between these hours only. **** Children are not permitted at this pub.**
be ordered all day Sunday without food.

THE GOOD YARN

132 High Street, Uxbridge

HOUNSLOW

THE MOON UNDER WATER
84-86 Staines Road, Hounslow

JJ MOON'S

80-82 Chiswick High Road, Chiswick W4

ISLINGTON

THE DOG

17-19 Archway Road, Archway N19

*179 UPPER STREET

179 Upper Street, Islington N1

THE WHITE LION OF MORTIMER

125-127 Stroud Green Road, Stroud Green N4

THE MASQUE HAUNT

168-172 Old Street, EC2

LAMBETH

THE CROWN AND SCEPTRE

2a Streatham Hill, SW2

THE BEEHIVE

407-409 Brixton Road, Brixton SW9

LEWISHAM

*THE TIGER'S HEAD

350 Bromley Road, Catford SE6

THE BIRD IN HAND

15 Dartmouth Road, Forest Hill SE23

CITY OF LONDON

THE HAMILTON HALL

Liverpool Street Station EC2

MERTON

THE WHITE LION OF MORTIMER

223 London Road, Mitcham

NEWHAM

THE MILLER'S WELL

419-421 Barking Road, East Ham E6

THE GOLDENGROVE

146-148 The Grove, Stratford E15

REDBRIDGE

THE NEW FAIRLOP OAK

Fencepiece Road, Barking

THE GEORGE

High Street, Wanstead E11

THE GREAT SPOON OF ILFORD

114-116 Cranbrook Road, Ilford

RICHMOND UPON THAMES

THE MOON UNDER WATER

53-57 London Road, Twickenham

SOUTHWARK

THE FOX ON THE HILL

149 Denmark Hill, SE5

SUTTON

THE WHISPERING MOON

25 Ross Parade, Woodcote Road, Wallington

THE MOON ON THE HILL

5-9 Hill Road, Sutton

TOWER HAMLETS

THE CAMDEN'S HEAD

456 Bethnal Green Road, Bethnal Green E2

WALTHAM FOREST

THE DRUM

557-559 Lea Bridge Road, Walthamstow E10

WANDSWORTH

JJ MOON'S

56a High Street, Tooting SW17

THE MOON UNDER WATER

194 Balham High Road, Balham SW12

THE SPOTTED DOG

72 Garratt Lane, Arndale Centre, Wandsworth SW18

THE RAILWAY

202 Upper Richmond Road, Putney, SW15

THE GRID INN

22 Replingham Road, Southfields, SW18

WESTMINSTER

THE MOON UNDER WATER

28 Leicester Square, WC2

WETHERSPOONS

Victoria Station, SW1

THE MOON AND SIXPENCE

185 Wardour Street, W1

BERKSHIRE

*THE OLD MANOR

Church Road, Bracknell

THE MONKS' RETREAT

163 Friar Street, Reading

BIRMINGHAM

THE SQUARE PEG

Unit 1, 2 & 3 Temple Court, 115 Corporation Street

BUCKINGHAMSHIRE

THE LAST POST

77 The Broadway, Chesham

THE FALCON

9 Cornmarket, High Wycombe

DORSET

**THE MOON IN THE SQUARE

48 Exeter Road, The Square, Bournemouth

ESSEX

THE ELMS

London Road, Leigh-on-Sea

THE LAST POST

Weston Road, Southend-on-sea

THE PLAYHOUSE

4 St. John's Street, Colchester

HEREFORD AND WORCESTER

THE GOLDEN CROSS HOTEL

20 High Street, Bromsgrove

HERTFORDSHIRE

THE HART AND SPOOL

148 Shenley Road, Borehamwood

THE MOON UNDER WATER

44, High Street, Watford

KENT

THE PAPER MOON

55 High Street, Dartford

THE SOVEREIGN OF THE SEAS

109-111 Queensway, Petts Wood

NORFOLK

THE BELL HOTEL

5 Orford Hill, Norwich

SURREY

THE REGENT

19 Church Street, Walton-on-Thames

SUSSEX

THE RED LION

North Terminal, International Departures Lounge,
Gatwick Airport

FORTHCOMING FESTIVALS

8-10 Sept	Oxford Oxford Bus Museum Station Yard Long Hanborough
9 Sept	Maidstone Museum of Rural Life Sandling
15-17 Sept	Brogdale Cider Festival Brogdale Fruit Farm Faversham
19-23 Sept	Ipswich Corn Exchange Ipswich
22-23 Sept	Watford West Herts Sports Club Watford
29-30 Sept	Feltham Feltham Assembly Hall Hounslow Road, Feltham
4-7 Oct	Bedford Corn Exchange Bedford
12-14 Oct	Reading TUC Club Chatham Street Reading
14 Oct	Kent Cider & Perry Exhibition Museum of Rural Life Sandling
19-21 Oct	Croydon Ruskin House Club 23 Coombe Road Croydon
10-11 Nov	Woking Woking Leisure Centre Woking Park <i>(strictly by ticket only)</i>

NORTH LONDON PUB GUIDE

A long awaited but well produced guide covering the N and NW postal districts of London together with WC1, EN1-5 and High Barnet.

The guide comprises 250 pages, of which 240 detail all the pubs of the area, a mention only for those with no real ale; other useful information for the ale enthusiast includes night buses, the ownership of the various pubs and pub groups and a recipe or two.

My initial reaction was the weight of this mighty tome which measures 7½" x 4", but it fits nicely into suit or anorak pocket.

It is obvious that a great deal of work has gone into its production and appropriate acknowledgements are carried to all those involved. The pub descriptions vary from those of a brief history of the pub such as the Dagmar Arms, N15 to a warning of video games, karaoke and striptease nights in the Refectory NW11. The beer listings are clear as too are the simple and straight-forward maps which, unusually not only show the location of the each pub but references back to the text.

My only criticism of the guide, and it is only a minor point, is that it does not use symbols to designate the more standard facilities offered but instead uses 34 alpha abbreviations from AC for accommodation through ME for meals (evening) to UN for underground (with abbreviated name and walking time).

Overall, however, a book well worth its £4.95 price tag which should prove to be a worthwhile travelling companion in the wilds of north London. Copies available from 3 Addison Terrace, Chiswick Road W4 5RF or CAMRA HQ, £4.95 post free.

Ian Amy

LONDON DRINKER is published by the London Branches of CAMRA, the Campaign for Real Ale Limited.

Editors: Chris Cobbold, 25 Valens House, Upper Tulse Hill, London SW2 2RX. Tel: 0181-674 0556; Andy Pirson, 13 Belvedere Close, Teddington Middlesex, TW11 0NT. Tel: 0181-943 5344; Ian Amy, 89 Woodfield Road, Thames Ditton, Surrey, KT7 0DS.

SUBSCRIPTIONS: £7.00 for 11 editions should be sent to: Stan Tompkins, 122 Manor Way, Uxbridge, Middlesex, UB8 2BH.

ADVERTISING: Barry Tillbrook. Tel: 0181-989 7523.

Please be sure to send all Diary material to Andy Pirson.

Printed by Ark Litho Ltd., Global House, 21a Lombard Road, London SW19 3TZ.

A NEW DEAL FOR PUBS AND THE BREWING INDUSTRY

Britain's brewers and pub operators are calling for the Chancellor to set a strategy for phased reductions in beer duty which will promote fair competition in Europe, and attack the economic basis for major cross order shopping and smuggling.

The first step in this new deal is for the Chancellor to declare in the November Budget that beer duty will be reduced by 3.5p per pint on an average strength beer and that similar reductions will be made in each of the four successive Budgets. After the fifth Budget beer duty would stand at 6.5p per pint compared with 3.6p in France.

The 1995 Budget Submission to the Treasury on behalf of the Brewers and Licensed Retailers Association, entitled **A New Deal**, describes how pubs are being harmed by the UK's beer duty regime, threatening their place in our national heritage and the community.

Our very high rate of beer duty is depressing beer sales, and encouraging large-scale smuggling and related crime as millions of pints are brought in from European Community neighbours, with excise duty rates much lower than in the UK. In Britain the excise duty rate is seven times higher than in France.

Since 1979 duty and VAT on beer has risen by 53 per cent in real terms, and beer consumption in pubs and clubs has fallen by 28 per cent.

The excessive taxation of beer:

- * discriminates against weaker community pubs which rely heavily on beer sales.
- * discriminates against the less well off who drink more beer than those with higher incomes.
- * damages an industry which generates 910,000 jobs in the UK
- * exports jobs, profits and investment to the continent

BKRA Director Robin Simpson said: "It is now two and a half years since border controls were lifted as part of the Single Market programme. The excise duty differential between the UK and France has created an economic incentive for smuggling and related crime and severely distorted competition in favour of Continental producers and retailers.

Advertise in next month's

LONDON DRINKER

*and get your message direct to the brewers,
pub owners, licensees, festival organisers, pub
regulars and drinkers of London and beyond*

For more information, call now

BARRY TILLBROOK

0181 989 7523

"This is economic lunacy. The BLRA call upon the Chancellor to announce in his November 1995 Budget a programme of phased beer duty reductions to produce a reasonable degree of approximation to the French rate by the millennium."

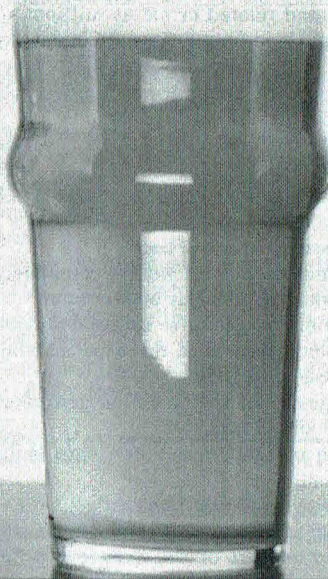
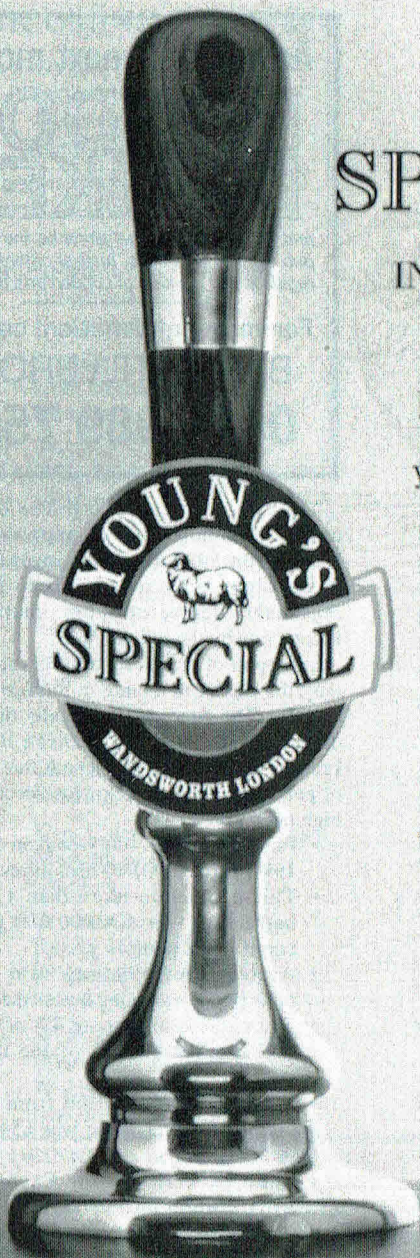
In support of its call for a lower rate of excise duty the BLRA is issuing millions of beer mats to pubs. The beer mat graphically displays the difference in duty paid between Britain and France. In addition it points out that thousands of pubs could be forced to close because of the high tax on beer.

- Imports of beer (duty-paid in France) in 1994 were 2,300,000 hectolitres.
- This equates to more than 1.4 million barrels or over 404,000,000 pints. (1 barrel = 288 pints).
- Averages out, 1994 saw over 1,100,000 pints per day coming across the Channel
- This is the equivalent of 4% of the British beer market (16.5% of the take-home trade).
- The "lost" retail spend from duty-paid imports on beer alone was £540 millions in 1994.
- The Chancellor of the Exchequer lost £181 million in beer taxes alone (£121 million excise duty, £60 million in VAT), excluding the consequences for other tax revenues.
- The French Chancellor of the Exchequer gained an additional £33,000,000 in excise duty and VAT thanks to British shoppers buying beer in France.

WE SPECIALISE

IN EVERY CORNER OF
THE COUNTRY

If your Landlord doesn't
yet stock this famous ale,
we can advise on supply
on the Young's helpline



Young & Co.'s Brewery
Telephone: 0181-870 0141

ATLAS

25 Winston Road
Stoke Newington, N16
0171 275 0174

£1 Pint

Webster's Green Label

plus, during the following times: midday-2pm,
8.30pm-9.30pm (Saturdays 8pm-9pm) &
Sundays 12.30pm-1.30pm

John Smith's Bitter Ruddles County

- ♦ Traditional Pub Games
 - ♦ Food available at all times
 - ♦ Function Room for hire
 - ♦ Open all permitted hours
-

9TH CHAPPEL BEER FESTIVAL

The Essex Branches of CAMRA are getting together once again with the East Anglian Railway Museum to hold their regular joint beer festival at the EARM headquarters at Chappel and Wakes Colne Station from Wednesday 6th to Saturday 9th September, opening from 11.00am to 4.00pm and 5.00pm to 11.00pm each day. Over 120 beers will be available in two main bars situated in the former Goods Shed and the Restoration Shed. In addition a railway vehicle will form the "Shunters Arms Bar" and restored coach will be used as a lounge bar. There will also be a foreign beer bar run by the "Big Ears" beer agency.

Entry costs £1.50 for lunchtime sessions while evening sessions cost £1.50 (Wed), £2.50 (Thu), £3.50 (Fri) or £2.00 (Sat). The entry charge includes entry to the railway exhibits during daylight hours and CAMRA members and Friends of the East Anglian Railway Museum are admitted free at all times.

Chappel is located on the "Lovejoy Line" (BR Marks Tey to Sudbury branch line). It has a roughly hourly service and is off the Liverpool Street to Colchester main line. It is anticipated that BR will be running additional late trains from Chappel to Marks Tey and Colchester between 10.30 and 11.00pm from Wednesday to Saturday. One of these should give a connection back to Liverpool Street from Wednesday to Friday but NOT Saturday.

Coaches and minibuses are welcome and big discounts are available to pre-booked parties of non-members. If you are coming by road Chappel & Wakes Colne Station is just off the A604 near the viaduct and parking is free.

For CAMRA and EARM members there will be a "Members & Friends" session between 7.00 and 11.00pm on Tuesday 5th September. Limited free camping is available but priority will be given to beerex staff. Extra staff are required again this year; if you would like to work please contact Graham Platt on 0181-220 0215 (H).

Everyday is a festival, with a wide selection of cask conditioned ales served from up to eight handpumps. Come and enjoy the quiet friendly atmosphere of a traditional London independent free house.

*Enjoy Pool, Darts, Sunday Quiz
Night and Beer Garden*

**Wednesday is Blues Night from 9 pm
Thursday is Jazz Night from 8.30 pm**

*Open all permitted hours
Nearest tube Borough*

**29 Swan Street, London SE1
Tel 0171-403-7931**

BEER BRIEFING

LONDON BEER GUIDES UPDATE 106

We welcome this month no less than eleven brand new licensed premises, all but one of them selling real ale, including pubs from the Firkin, Wetherspoon, Grosvenor Inns, Hogshead, Puzzle and new Bass "All Bar One" chains. Bass have followed Taylor Walker in creating pseudo-Irish theme pubs, the first of which has resulted in the adulteration and loss of identity of an historic Covent Garden pub. Beware further insensitive conversions as the handwagon rolls on across London. A comprehensive list of Scottish & Newcastle pubs acquired from Grand Metropolitan has been compiled and the first part is included below. A new edition of the North London Pub Guide has recently been published; any new real ale outlets, losses and major changes not already recorded in the Updates will be included next month and from the following month Updates will cross refer to the new guide.

The numbers in brackets after each entry refer to the page number in the following guides: E – East London & City Beer Guide, 3rd edition; K – 'Real Ale Drinkers Guide to Kent Pubs', 8th edition; N – North London Beer Guide, 2nd edition; SE – South East London Pub Guide, 4th edition; 3SE – South East London Pub Guide, 3rd edition; SW – Real Beer in South West London; W – Real Beer in West London; X – Essex Beer Guide, 8th edition. U refers to earlier updates. # indicates a guest beer.

If you would like to report changes to pubs or beers please write to: Beer Guides Updates, 2 Sandtoft Road, London SE7 7LR.

NEW & REOPENED Pubs & Pubs CONVERTED TO REAL ALE

CENTRAL

WC2, BOX, 32/34 Monmouth Street. No real ale. A cafe bar in shop unit.

WC2, SLUG & LETTUCE, 13/14 Upper St. Martins Lane. Courage: Directors Bitter. Wadwoth: 6X. Latest Grosvenor Inns Free House in former restaurant premises. Spacious light and airy ground floor bar with spiral staircase leading to basement bar. Polished light pine floor with tiled bar area, individual tables and chairs and ceiling fans promote a "continental" cafe-bar image. Wine racks predominate behind the bar. Food. Open all permitted hours.

EAST

E1, WATER POET, 9 Stoney Lane (off Hounsditch). Adnams: Bitter, Broadside. Boddington: Bitter. Marston: Pedigree. Whitbread: Fuggles IPA. New bar in former storage area at ground floor of office building. Badged as an Adnams pub it is understood to be independently owned with a Whitbread involvement. Following the current fashion, it is decorated with light pine floor, partly raised at the front, pastel colours and large windows opening on to an outside drinking area. Again wine racks feature behind the bar. Food at lunchtimes. Opens 11-11 Mon-Fri, closed weekends.

NORTH

N1, PIED BULL, 1 Liverpool Road. Renamed **ALL BAR ONE**. Bass. Fuller: London Pride. Hancock: HB. Converted to become part of new Bass chain. Emphasis on food with white aproned staff and chalkboard menus. Bare floorboards. Long tables, benches and church chairs. Newspapers (and the Beano) to read. Nuts and eggs (sweets) in wall dispensers. Overhead pulley system for food ordering. Disabled WC. Open all permitted hours.

SOUTH EAST

SE18, PULLMAN, 27 Woolwich New Road. Bass. Worthington: Best Bitter. Reopened as a Free House, ex Grand Met (Watney). (SE173)

SE18, TRAMSHED, 51 Woolwich New Road. No real ale. Reopened. (SE174)

SE20, LORD PALMERSTON, 101 Maple Road.

Reopened and renamed **O'BRIENS**. Boddington: Bitter. Now a Free House, ex Grand Met (Watney). Beer likely to vary within Whitbread range. (SE189)

SOUTH WEST

SW19, ALL BAR ONE, 37-39 Wimbledon Hill Road. Bass. Fuller: London Pride. Hancock: HB. Another new outlet for the Bassowned chain in listed red brick former bank building hence the lack of any exterior signs. For description of interior see N1, PIED BULL above. Board games to play complete the amiable scene. Beer names on pump clips in gold perhaps indicate the chain's pricing policy. Open all permitted hours.

SW19, HAND & RACKET, 25-27 Wimbledon Hill Road. Boddington: Bitter. Fuller: London Pride. Marston: Pedigree. Whitbread: Fuggles IPA, Castle Eden Ale. 4 Guest beers generally from small breweries (G). Scrumpy jack: Old Hazey Cider. New Whitbread Hogshead Ale House opened in April 1995 in former shop premises with tennis theme. Traditional decor with exposed wood floors, wooden panelling, chairs and barrel tables. Walls are covered with artefacts and panels relating to tennis at Wimbledon through the years together with old photos of Wimbledon. Open all permitted hours.

CHEAM, WETHERSPOONS, 552-556 London Road. North Cheam. Courage: Directors Bitter. Marston: Pedigree. Theakston: Best Bitter. XB. Younger: Scotch Bitter. Guest beer. Weston: Great Western Revival Cider. One of a pair of Wetherspoon Free Houses recently opened in the outer parts of SW London, this one in a former Sainsbury freezer centre. The large spacious bar contains the usual format of wood panelled walls adorned with local history panels and paintings from local artists. A sculpture of King Henry VIII who built the nearby Nonsuch Palace (subsequently demolished) stands at the entrance. No smoking/eating area at rear. Food. Disabled WC. Open all permitted hours (including 12-10.30 Sundays).

KINGSTON, BARONS PUZZLE, 1 St James Road. Puzzle Bitter (Benskins: Bitter). Tetley: Bitter. New Puzzle Pub Co Free House in former Habitat shop premises, the third pub in the chain. A large moose's head over the bar; a knight in armour; tapestries on the walls and a large mock

The Malthouse


A Real Ale Heaven

Over 250 Traditional Beers this year (So Far !)



This Month CAMRA special.

**Monday Nights 20% off all the
Real Ales to card carrying members.**



Home Cooked Lunches



Regular Party Nights and Events



Children Welcome at Weekends



**The Malthouse
7 Stanmore Hill
Stanmore**

Tel - 0181-420-7265

BEER BRIEFING LONDON BEER GUIDES UPDATE 106 continued

fireplace emphasise the "Baron" theme. Outside drinking. Popular with youngsters in the evenings.

KINGSTON, FINANCIER & FIRKIN, 43 Market Place. Firkin: Full Mash Mild (3.4%), Overdraught (3.5%), Financier (4.3%), Golden Glory (5.0%), Dogbolter (5.6%). Guest beers (currently Everard: Tiger and Firkin: Ginger Beard). Latest Taylor Walker "Firkin" pub created in former bank premises. Beers are believed to brewed at the Falcon & Firkin, E9. 'L' shaped bar displays typical Firkin decor with bare polished floorboards, barrel tables etc. A stage and piano provides an opportunity for live music, currently acoustic guitar on Fri & Sat evenings. Photos of old Kingston and various bits of repro. breweriana decorate the walls; newspapers available. Food. Disabled WC. Open all permitted hours.

MORDEN, WETHERSPOONS, Aberconway Road (near London Road). Courage: Directors Bitter. Marston: Pedigree. Theakston: Best Bitter, XB. Younger: Scotch Bitter. Guest beer: Weston: Great Western Revival Cider. Latest Wetherspoon Free House in new corner shop unit (Unit 3) opposite Morden Tube Station. A slightly gloomy interior created by the dark blue ceiling with "Richard Rogers" style exposed ventilation ducts. An imaginative sculpture faces the full glass frontage on entry, comprising the top half of a London Underground ticket inspector and bottom half of a monk. Morden was once owned by Westminster Abbey before the dissolution and Merton Priory was close by. Morden is of course the southern terminus of the Northern Line. Local history panels and paintings by local artists decorate the walls and pillars. Food. Disabled WC. Open all permitted hours.

RICHMOND, ALL BAR ONE, 9-11 Hill Street. Bass. Fuller: London Pride. Hancock: HB. M&B: Highgate Dark. Another Bass outlet and part of new chain in a converted bank building. See N1, **PIED BULL** above for description of interior. Food available Sun-Thurs 12-10, Fri/Sat 12-9. Disabled WC. Open all permitted hours.

SUTTON, ALL BAR ONE, 2 Hill Road. Bass. Fuller: London Pride. Hancock: HB. Yet another Bass conversion in part of former Alders department store. For description see N1, **PIED BULL** above. Open all permitted hours.

PUBS CLOSED OR CEASED SELLING REAL ALE
SOUTH WEST

KINGSTON, GAZEBO. Sam Smith. H removed (SW65)
MITCHAM, WHITE HART. Charrington, closed, future uncertain. (SW69)

OTHER CHANGES TO PUBS & BEER RANGES
CENTRAL

WC2, SALISBURY. -Taylor Walker: Best Bitter. +Eldridge Pope: Dorchester Bitter. +Tetley: Bitter. +Theakston: Best Bitter. (W56, U106 S&N list below)

WC2, WELSH HARP. renamed **HARP**. -Charrington: IPA. -Young: Bitter. +Fuller: London Pride. (W57)

WC2, WHITE SWAN. Renamed **P.J. MOLLOY & SON**. -Charrington: IPA. -Bass museum Brewery: Wicklow Ale (4.9%). The first of many Bass pseudo-Irish pubs to come in London converted to superimpose an Irish drapers shop theme. The great pity is that such an historic London pub and a listed building has been chosen for such a crass imposition. The West London beer guide describes the White Swan as a charming two bar pub dating back to the 17th Century mentioned by Pepys and frequented by

Dickens with good service and beer. Imagine the outcry if one of Dublin's historic pubs were converted with a "John Bull" theme. How could Bass be so insensitive and how could Westminster Council allow such an inappropriate imposition on a listed building? The only redeeming feature is that real has been retained and the Wicklow Ale is apparently brewed specifically for the pub. (W57)

SOUTH EAST

SE1, TRINITY ARMS. Now a Free House, formerly a banks & Taylor pub, latterly Kingwood Taverns. At least 8 real ales from small and independent breweries available, including Crouch Vale. (SE36)

PURLEY, TUT'N'SHIVE. Reverted to **ROYAL OAK**. -Beers listed except Boddington: Bitter. +Boddington: Mild. +Flowers: Original Bitter. +Whitbread: Best Bitter. +Seasonal guest beer (currently Whitbread: Colonel Peppers Lemon Ale (5.0%)). (3SE268, U82)

SOUTH WEST

SW8, BELL. -Beers listed. +Webster: Yorkshire Bitter. (SW33, U52)

SW14, HALFWAY HOUSE. +Brakspear: Bitter. +Whitbread: Best Bitter. +3 Guest beers (G). (SW44, U50, U105)

RICHMOND, ROEBUCK. -Younger: IPA, No.3. +Theakston: Best Bitter. Old Peculier. (SW73, U53)

WEST

W14, HOLLAND ARMS. -Webster: Yorkshire Bitter. +John Smith: Bitter. (W94)

CORRECTIONS TO UPDATE 105

PUBS CLOSED OR CEASED SELLING REAL ALE

SE1, DUKE OF CLARENCE. Address is 69 Tooley Street.

OTHER CHANGES TO PUBS & BEER RANGES

SE1, PRINCE ALBERT. Ref. should read (SE29, U102)

SW9, BEEHIVE. Should read -Flowers: IPA.

W11, FROG & FIRKIN. Renamed **FUDRUCKERS**. should read -Beers listed. ± (plus) Eldridge Pope: Hardy Country Bitter etc.

**PUBS ACQUIRED BY LABATTS & MAGIC
PUB CO (UPDATE 98)**

ENFIELD, SALISBURYS. ref. should read (N187, U105 above)

**PUBS ACQUIRED BY SCOTTISH &
NEWCASTLE**

In December 1993 Scottish & Newcastle bought the 'Chef & Brewer' estate of managed houses from Grand Metropolitan. These pubs were generally the cream of the estates inherited from breweries acquired by Grand Met, which in Greater London were from Watney, Truman and more recently Courage and tended to be in the wealthier and leafier parts of the Capital. At the time of takeover, the 'Chef & Brewer' estate comprised all Grand Met managed houses in London although previously the name had been reserved for food oriented pubs. The estate had already absorbed other Grand Met chains such as St. Georges Taverns and Clifton Inns which had run a pseudo Free House operation with some beers from non-Grand Met breweries but latterly often reverting to the standard Websters and Ruddles range.

In May 1994, 126 (corrected) of the pubs acquired in Greater London were sold to the Magic Pub Co which in turn immediately sold some on to Labatts and Whitbread. A full listing of these pubs appeared in Update 98. Further surveys by CAMRA members has enabled a list of those Chef & Brewer pubs which are now operated by Scottish &



A genuine Free House featuring a selection of the very best in Cask Ales, Traditional Cider and Perry

- Mild always available
- Lined glasses guarantee full pints
- Salt Beef Sandwiches
- Function room free to CAMRA members
- Jazz piano Sunday lunchtimes
- Jazz every 3rd Saturday evening in the month
- Open all permitted hours

CAMRA
NORTH LONDON
PUB OF THE YEAR
1995

26 Wenlock Road
London N1

0171 608 3406

Nearest Tube stations are Old Street (exit 1) and Angel. Wenlock Road is off City Road via Windsor Terrace

CROYDON REAL ALE FESTIVAL

19-21 October 1995

The 3rd Croydon Real Ale Festival will take place at Ruskin House Club from Thursday 19th to Saturday 21st October 1995. This is the same venue as in previous years; for those of you who do not know it, the club is at 23 Coombe Road (on the corner of Park Lane), Croydon. East, South and West Croydon stations (Travelcard Zone 5) are all nearby with East Croydon offering the best services including fast services from London, Surrey and Sussex. South Croydon and West Croydon have stopping train services from many stations in South London. There are numerous local bus services nearby or in central Croydon.

This year we plan to open the festival on Thursday with a 5.00–10.30 pm session followed by a 12.00 noon–10.30pm session on Friday and a 11.00am–6.00pm (later if beer stocks last) session on Saturday. As in previous years the main bar will be in a large marquee on the back lawn with visitors also being able to use the main club building and the Cedar Hall alongside the marquee both of which will offer more cask beers, ciders and British and Foreign bottled beers. Food will be available at all sessions. Full details in the October edition of London Drinker.

Terry Hewitt
Festival Organiser

SUTTON ACOUSTIC MUSIC CLUB

Once a month on a Sunday night Sutton Acoustic Music Club meets in the music room of the Robin Hood in Robin Hood Lane, Sutton. Dave Illingworth's Rent Party Nights as they are called, describe themselves as an informal mixture of Blues, Country, Folk, Jazz, Pop and whatever; mainly acoustic and American in style but performers of ALL persuasions are welcome to do solo or group spots or just to sit in.

Occasional local guests are featured in main spots and the programme (with dates) for the next few months is as follows:

- 24th September - Graham Larkbey
- 22nd October - Old friends and Palmistry
- 26th November - Terry Silver
- 10th December - Old friends and guests

The entertainment starts at 8.00 pm and is free although a collection is made at each event; the money raised is ALL donated to Saint Raphael's Hospice. The first two Rent Party Nights on 18th June and 16th July raised £78.11.

If you want more details, these can be obtained from Dave Illingworth on 0181-540 2919.

German Beer Fest

Friday 29th & Saturday 30th September,
Sunday 1st October 1995

featuring 6 different German beers on
draught including: Heller Rauchbier & Pils,
St Georgenbräu, Kölschbier, Barnicel

plus a selection of bottled beers including:
Schneider-Weisse, Straubinger, Märzen

German Food & Drinking Songs
(Leder Hosen optional)

Priory Arms

83 Lansdowne Way, Stockwell, SW8
(5 minutes Stockwell Tube)
Telephone 0171 622 1884

EAST END NEWS

The letter from Bob Kelly in May London Drinker has galvanised me back into writing these East End jottings. I think a survey of London Drinker readers' likes and dislikes seems a good idea, certainly it's about time the cover was redesigned. My last article appeared in the February edition but the whole of the article did not. Somewhere along the line the results of our survey at Pigs Ear Festival disappeared. I cannot imagine that lack of space was the reason given the page and half of what went on in London Drinker 15 years ago. I would have thought what the punters had to say at a beer festival eight weeks previous would be more relevant. However in the words of Ronnie Corbett, I digress.

EC1: Oceans/ Morgans Diner (55/63 Goswell Road) was omitted (deliberately) from the East London & City Beer Guide and was closed until March when it re-opened as the Cloak & Habit selling Greene King's IPA, Abbot and Sorcerer and Youngs Bitter. Chequers in City Road is closed and for sale. The Crown & Woolpack is now the Japanese Canteen, as opposed to a Japanese canteen, and no longer a pub. The Harlem Yacht Club originally the Surprise is closed. The Empress of Prussia is now a free house. Anybody going to visit the Old Monk in EC2 as reported in update 102 should be aware the entrance is in Houndsditch. EC3: Canterbury Arms has been demolished. The Mailcoach that disappeared as a result of the bomb blast in April 1993 has re-opened on the same site as has the City House (86 Bishopsgate EC2) which surprisingly retains the Finchs logo. Youngs bought Finchs some time back. EC4: The Christopher Wren is closed and will be demolished. The same fate awaits the Master Gunner due to the St Pauls redevelopment but it remains open for the time being. E1: British Prince, Yorkshire Grey and Dukes (Royal Duke) are closed. Peasants Revolt has been renamed Guvners and Prince of Wales (Globe Road) has re-opened and renamed Charlies and is now a free house. E2: Black Horse is no longer a pub but an art gallery (in the East End?). Flamingos, formerly RJ's, Jazzy Dees and originally the Westminster Arms has been converted to flats though there were plans to turn it into a mosque. Prince of Wales, Barnet

Grove is no longer a pub whilst the Queen Victoria opposite is closed and for sale. Nearby, Montys formerly Knights and originally the Gosset Arms is undergoing work. Suspect the last two pubs mentioned will be converted to flats. The Green Gate is also closed and has the builders in and I believe will be converted into a shop. The Ship & Blue Ball still appears to be closed and was to have been auctioned last November. The Weavers Arms is closed with brewery and name signs removed. The Victoria is now a free house. E3: Crystal Tavern has been re-named Wheelwrights. Three Tuns is closed and for sale. E15: Lord Henneker is now a free house. The Green Gate is closed. E17: McCanns has been renamed Monkey Business. Other news not needing any updating at the pubs remain closed are: E1 the Blackboy work under way, E2 the same for the Pennyfarthing (re-named back to Spread Eagle) and the Little Wonder (ex Manchester Arms) and the King & Queen.

Whilst updating the East London pub database with postcodes I came across a couple of anomalies: E13 the Prince Albert is at 135 High Street not the Broadway and E17 the Essex Brewery Tapis at 2 Markhouse Road and not St James's Street. As all pubs in the East London & City are plotted on maps I don't see why anyone should be too worried that the address was wrong.

Update 102 mentioned that Scruffy Murphys ex King & Keys was keg but my spy tells me there is a handpump there.

Fancy living in a brewery? The former Mann, Crossman and Paulin brewery in Whitechapel Road will be converted into flats. Further down the road the site former Anchor Brewery is up for sale.

Is there anyone out there that uses an Amstrad PCW that can write a program in CPM to add 0171 to all 739 telephone numbers and 0181 to all 983 numbers etc for our pub database I would like to know. I could I know do it via the find/exchange option in word processing package but that seems too easy.

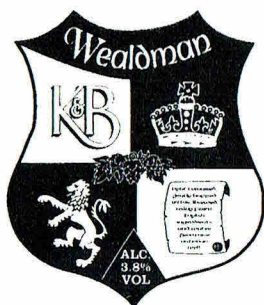
For copies of the East London & City Beer Guide (late 1991) send £3 and for updates send sae to me at 111 Ordell Road, Bow E3 2EQ.

Keith Emmerson

King & Barnes

FINE SUSSEX ALES

New Beer



Available in all K&B pubs and
selected Free Trade outlets

Guest Beer



Available w/c 28 August



For more information on the Brewery,
the Pubs, the beers or guided tours
please ring or write to:

King & Barnes Ltd
18 Bishopric, Horsham, W.Sx. RH12 1QP
Tel: 01403 270470

BEER BRIEFING **LONDON BEER GUIDES UPDATE** **106 continued**

Newcastle in Greater London to be compiled.

We estimate that 487 Chef & Brewer pubs in Greater London remained after the initial Magic sales and resales, of which at least two more have since been sold, one is permanently closed and boarded up and one has been demolished. This leaves 483 pubs at the latest count (including two believed to be run on behalf of other breweries). These figure include four brew pubs. To this total should be added the William Younger estate of which an estimated 35 exist within Greater London. This represents almost 10% of all the pubs in Greater London.

The pubs are gradually being renovated, often after years of neglect, and subsidiary chains are being created including "T & J Barnard" and "Barras & Co" which are real ale orientated. S&N beers such as Theakstons are replacing Websters, Ruddles and Courage in many pubs but regrettably it appears to be policy to introduce "swan neck" dispensers with the resulting thick head, short measure and lack of condition, even for southern brewed beers. One good point is the removal of the ubiquitous "Tavern" tag from many pub names which were arbitrarily applied in Grand Met days although some historical "Taverns" have disappeared also. In the lists below the brewery from which the pub was inherited by Grand Met is noted. Note that in a few instances some pubs were inherited from, acquired or built by Grand Met itself. # Indicates pubs operated or labelled as Clifton Inns "Free Houses" at some stage. * Indicates pubs already reported in the Updates as being acquired from Grand Met. Pubs in Central, East, North and North West Greater London are listed this month. Those in South East, South West and West London will be listed next month. The compilers would welcome any information on any pubs which we have missed or further sales or changes to the pubs listed, especially those in the subsidiary "real ale" chains.

CENTRAL

EC1, HAND & SHEARS. Courage (E17, U67)
EC1, LORD RAGLAN. Courage (E20)
EC2, BROADGATE EXCHANGE, 2 Exchange Place, off Appold Street. Grand Met. Note correct address (E30)
EC2, BULL. Watney. formerly COLLINS (E30, U69, U82)
EC2, CRISPIN. Courage (E30)
EC2, KINGS ARMS. Truman (E33)
EC2, MAGOGS. Grand Met (ex Free House)#. Subsequently renamed **VINO VERITAS (CHEAPSIDE)*** (E33, U98)
EC2, RED LION. Watney* (E35, U98)
EC3, PEACOCK. Truman (E41)
EC3, SHIP TAVERN, 27 Lime Street. Truman (E42)
EC3, SHIP & TURTLE. Courage (E42, U64)
EC4, CARTOONIST. Watney (E47)
EC4, COCK TAVERN (YE OLDE). Truman (E48)
EC4, LONDON STONE. Truman (E50)
EC4, SEA HORSE. Courage (E54)
EC4, SIR CHRISTOPHER WREN. Watney# (E54)
EC4, WHITE HART. Courage (E55)
EC4, WHITE SWAN, 18 Farringdon Street. Watney# (E56, U69)
EC4, WHITE SWAN TAVERN, 28/30 Tudor Street.

Truman (E56)
EC4, WITNESS BOX. Watney (E56)
W1(F), CAMBRIDGE. Watney# (W28, U52)
W1(F), MASONS ARMS, 58 Devonshire Street. Watney# (W32)
W1(F), PRESLEYS. Truman. subsequently reverted to **RISE SUN** (W32, U93)
W1(F), VALIANT TROOPER. Watney#* (W32, U98)
W1(Mar), BEEHIVE, 126 Crawford Street. Watney# (W33)
W1(Mar), BRICKLAYERS ARMS, 6 New Quebec Street. Watney# (W34, U51)
W1(Mar), CASK & GLASS. Watney (W34, U51, U80)
W1(Mar), COCK & LION. Watney# (W34, U89)
W1(Mar), LAMB & FLAG. Courage (W34)
W1(Mar), MASONS ARMS, 51 Upper Berkeley Street. Watney (W35)
W1(Mar), THREE TUNS. Watney# (W35, U51, U89)
W1(May), AUDLEY. Watney (W38, U50, U90)
W1(May), BARLEY MOW, 82 Duke Street. Watney (W38)
W1(May), DUKE OF YORK, 8 Dering Street. Watney (W39, U90)
W1(May), GOAT TAVERN. Watney (W39)
W1(May), GROSVENOR ARMS. Watney# (W39, U50, U90, U99)
W1(May), HOG IN THE POUND. Watney* (W39, U90)
W1(May), KINGS ARMS, 2 Shepherd Market. Watney#* (W39)
W1(May), MARLBOROUGH HEAD. Watney* (W39, U90, U101)
W1(May), MASONS ARMS, 38 Maddox Street. Watney# (W39, U56, U60, U90)
W1(May), PUNCH BOWL. Watney. Note now PUNCH-BOWL (one word) (W39, U50, U80, U90)
W1(May), RED LION, 1 Waverton Street. Watney (W39)
W1(May), ROSE & CROWN. Watney# (W40, U50, U90)
W1(May), RUNNING FOOTMAN. Watney (W40, U90)
W1(May), RUNNING HORSE. Courage (W40, U90, U99)
W1(May), SHEPHERDS TAVERN. Watney* (W40, U90, U95)
W1(May), SPREAD EAGLE. Watney#* (W40, U90, U98)
W1(S), DUKE OF ARGYLL. Watney#. (W42, U57, U90)
W1(S), GLASSBLOWER. Watney#*. Note, contrary to U101, GLASSBLOWER is one word (W42, U53, U90, U101)
W1(S), KINGS ARMS, 23 Poland Street. Courage (W43)
W1(S), LEICESTER. Grand Met (ex Free House)#. Now reverted to **LEICESTER ARMS** (W43, U53, U64, U90)
W1(S), LYRIC TAVERN. Watney (W43)
W1(S), ST. JAMES TAVERN. Watney (W44, U48, U89)
W1(S), SHAKESPEARES HEAD. Watney# (W44, U80, U90)
WC1, FALKLAND ARMS. Watney (N15, W46)
WC1, FRIEND AT HAND. Watney (N16, W46, U54, U75)
WC1, JEREMY BENTHAM TAVERN. TAV-ERN tag now removed (N16, W46)
WC1, MARLBOROUGH ARMS. Courage (N18, W47)
WC1, MUSEUM TAVERN. Watney#* (N19, W47, U84, U95)
WC1, NORFOLK ARMS. Watney (N19, W47)

Moor Mill

Near St. Albans



"Old Favourites and New Flavours... Beer Festival"

...Starts Friday 22nd September...

Featuring

Archers Golden 4.7%

Exmoor Gold 4.5%

Poole Dolphin Bitter 3.9%

Ashvine Black Boy Porter 4.2%

Spinnaker Classic 4.0%

and many many more.....

...Don't miss it - ends 15th October

★ Call 01727-875557 ★
and ask Bob for details

Moor Mill, Smug Oak Lane, Bricket Wood, Nr. Radlett, St. Albans, Herts AL2 3TY

BEER BRIEFING
LONDON BEER GUIDES UPDATE
106 continued

WC1, SUN. Grand Met (ex Free House)# (N23, W51, U75)

WC1, SWAN. Watney# (N23, W51, U90)

WC1, WHITE HART. Watney (N24, W51)

WC1, YORKSHIRE GREY BREWERY. Grand Met (ex Free House)# Brewpub (N24, W51)

WC2, ANGEL. Courage* (W52, U98)

WC2, CHARLIES. Watney*. Subsequently reverted to **PRINCE OF WALES** (W53, U92)

WC2, CHESHIRE CHEESE. Courage (W53)

WC2, DEVEREUX. Courage (W53)

WC2, ESSEX SERPENT. Grand Met (ex restaurant) (W53, U72)

WC2, EVERGREENS. Watney (W53, U51)

WC2, GREEN MAN & FRENCH HORN. Watney (W54, U80, U93)

WC2, HAND & RACQUET. Watney (W54)

WC2, IMPERIAL. Watney# (W54, U53, U74)

WC2, KEMBLE HEAD. Watney# (W54, U51, U101)

WC2, LONG ISLAND ICED TEA BAR. Watney# (fizz). Now **LONG ISLAND ICED TEA SHOP.** (W55)

WC2, MAPLE LEAF. Watney# (W55, U93)

WC2, MARQUIS OF GRANBY. 142 Shaftesbury Avenue. Watney# (W55, U80)

WC2, NELL OF OLD DRURY. Courage (W55, U54)

WC2, OLD ORLEANS. Grand Met (fizz) (W55)

WC2, PUNCH & JUDY. Courage (W56, U93)

WC2, RAT & PARROT. Grand Met# (W56, U54, U74)

WC2, SALISBURY. S&N appear to have inherited management of this Taylor Walker pub from Chef & Brewer. (W56)

WC2, SUSSEX. Grand Met (ex Youngers)# (W56, U58, U80)

WC2, TATTERSALL CASTLE. Should be under SW1(S1) – see below.

WC2, TWO BREWERS TAVERN. Watney. TAVERN tag now removed (W57, U53, U80)

EAST

E1, GOOD SAMs. Truman (E66)

E1, PRINCESS OF PRUSSIA. Truman (E71)

E1, PROSPECT OF WHITBY. Watney (E71)

E4, COUNTY ARMS. Truman (E95)

E4, LARKSHALL. Courage (E96)

E4, OLD HALL TAVERN. Watney (E96)

E4, QUEEN ELIZABETH. Truman (E96)

E10, THREE BLACKBIRDS. Truman (E125)

E11, BRITISH QUEEN TAVERN. Watney. TAVERN tag now removed (E127)

E11, LINCOLN. Watney (E129, U89)

E12, GOLDEN FLEECE. Watney (E133)

E17, BELL. Watney (E165)

E17, COACH & HORSES. Truman (not Watney as stated in E guide) (E166)

E17, DOG & DUCK. Watney (fizz) (E166)

E17, LORD RAGLAN. Watney (E167)

E17, ROSE & CROWN. Truman (fizz) (E168)

E18, RAILWAY BELL. Courage (E171, U67)

BARKING, BARGE AGROUND. Truman (X12, U74, U85)

BARKING, SHIP & SHOVEL. Watney (X13, U88)

BARKINGSIDE, CHEQUERS. Watney (X14)

BARKINGSIDE, DOCTOR JOHNSON. Courage (X14)

BARKINGSIDE, HORNS TAVERN. Watney (X14)

CHADWELL HEATH, CHADWELL ARMS. Watney (X26)

CHADWELL HEATH, COOPERS ARMS. Watney (X26)

CHADWELL HEATH, MOBY DICK. Watney (fizz) (X26)

COLLIER ROW, BELL & GATE. Courage (X39)

CRANHAM, JOBBERS REST. Watney (X39)

DAGENHAM, BULL TAVERN. Watney (X40)

DAGENHAM, ROUNDHOUSE. Watney (X40)

GANTS HILL, KING GEORGE V. Courage (X48)

GANTS HILL, VALENTINE. Courage (X49)

GIDEA PARK, CARDINALS. Watney. Subsequently reverted to **SQUIRRELS HEAD.** (X49, U92)

GIDEA PARK, PLOUGH. Watney. Note contrary to U73 this pub was not sold to Whitbread. (X49, U73, U82)

GIDEA PARK, SHIP INN. Watney. INN tag now removed (X49)

HAROLD HILL, DUCKWOOD. Truman (fizz) (X58)

HAROLD HILL, MORRIS DANCER. Watney (X58)

HAROLD HILL, SAXON KING. Courage (fizz) (X58)

HORNCHURCH, CROWN. Watney (X62, U78)

ILFORD, BELL. Watney (X63)

ILFORD, CAULIFLOWER. Watney (X63)

ILFORD, CRANBROOK. Truman (X63)

MARKS GATE (CHADWELL HEATH), HARROW. Watney (X76)

ROMFORD, GOLDEN LION TAVERN. Watney. TAVERN tag now removed (X86)

ROMFORD, RUSH GREEN TAVERN. Watney. Subsequently renamed **BIG HAD MO'S (GOOD TIME EMPORIUM)**, and not HEAD as reported in U103 (X87, U103)

ROMFORD, SUN. Truman (X87, U82)

SOUTH HORNCHURCH, CHERRY TREE. Watney (fizz). Formerly **BARNABY'S CARVERY** (X94, U72)

SOUTH HORNCHURCH, GOOD INTENT. Watney (X94)

WOODFORD GREEN, CASTLE. Truman. Currently temporarily closed. (X114)

NORTH

N1, ALBION. Watney (N25)

N2, FIVE BELLS. Truman (N48)

N3, MINSTREL. Courage (N50)

N3, QUEENS HEAD. Courage (N50)

N4, BEACONSFIELD. Courage (fizz) (N51)

N6, PRINCE OF WALES. Watney. ALE HOUSE tag now removed. (N60, U87)

N6, WOODMAN. Watney (N62)

N7, HERCULES. Watney* (N65, U101)

N7, TUFNELL PARK TAVERN. Courage (N68)

N8, LION. Courage (N71, U38)

N8, QUEENS HOTEL. Courage. HOTEL tag now removed (N73)

N8, WELLINGTON. Watney. Note correct postal code, listed incorrectly under N22 in N guide. (N109)

N10, GREEN MAN. Watney (N77)

N10, JOHN BAIRD. Courage (N77)

N11, GROVE. Watney (fizz) (N79, U77)

N12, MALT & HOPS. Watney (N81)

N13, BIRD IN HAND. Watney (N83)

N13, FOX HOTEL. Watney. HOTEL tag now removed. (N83)

THE FIRKIN BREWERY



OPENING DATE:
Wednesday 20th September 1995



REGULAR
LIVE MUSIC

*Firkin T.Shirts, Sweatshirts,
Baseball Caps, Mugs, Pins
& Brewkits for sale in all Firkins.*

**Daily
Newspapers
available**



FREEDOM & FIRKIN
196 Tooting High Street,
Tooting
Tel: 0181 672 5794

Pub Brewed Ales
available in all Firkins
3.5%ABV Bitter
4.3%ABV Best Bitter
5.6%ABV Dogbolter



JOIN THE FIRKIN
CLUB

TAKE PART IN THE
FIRKIN CRAWL

*Breakout from the daily grind, escape to the
Freedom & Firkin and liberate your tastebuds with
our range of Pub Brewed Ales*

USQUE AD MORTEM BIBENDUM

BEER BRIEFING
LONDON BEER GUIDES UPDATE
106 continued

N14, SOUTHGATE. Watney (N85)
N14, WHITE HART. Watney (N85)
N14, WOOLPACK. Truman (N85, U81)
N17, BEEHIVE. Courage (N96)
N17, PLOUGH. Truman (fizz) (N97, U88)
N20, CAVALIER. Courage (N104)
N20, WOODMAN. Watney (N105)
N21, CHASESIDE TAVERN. Watney. Note CHAS-
ESIDE is one word. (N106)
N21, QUEENS HEAD. Watney (N107)
ENFIELD, ENFIELD ARMS. Truman (N182)
ENFIELD, ROSE & CROWN. Clay Hill. Watney
(N187)

NORTH WEST

NW1, ALLSOP ARMS. Watney (N113)
NW1, CAMDEN STORES. Truman*. Subsequently
renamed **RAT & PARROT** (N115, U98)
NW1, GLOBE. 43 Marylebone Road. Truman (N118)
NW1, GREEN MAN. Watney. Formerly **PORTLANDS**
(N124, U48)
NW1, ROYAL GEORGE. Truman (N126)
NW1, SOLS ARMS. Truman (N127)
NW3, BELSIZE TAVERN. Courage (N132)
NW3, NORTH STAR. Watney* (N136, U88, U104)
NW3, OLD ORLEANS. Grand Met (U70)
NW4, CHEQUERS. Courage (N141)
NW4, LITTLE HOUSE. Watney. Formerly **TEDDYS**
(N142, U77)
NW4, LOAD OF HAY. Truman (N141, U49)
NW4, MANNINGS. Truman (N142)
NW5, DUKE OF ST ALBANS (ALE HOUSE). Truman.
ALE HOUSE tag now removed (N144)
NW6, BRIDGE TAVERN. Truman (fizz) and not Watney
as stated in N guide. (N149)

NW6, PRINCE OF WALES, 37 Fortune Green Road.
Watney (N148)
NW6, PRINCE OF WALES, 101 Willesden Lane. Wat-
ney (N148)
NW6, RAILWAY. Watney. Subsequently renamed **RAT**
& **PARROT** (N149, U101)
NW7, RAILWAY TAVERN. Truman (N151)
NW8, DUKE OF YORK, 2 Gateforth Street. Truman
(fizz) (N156, U82, U88)
NW9, BLACKBIRDS. Truman (fizz) (N160, U88)
NW9, KINGS ARMS. Truman (N161)
NW10, COACH & HORSES. Watney (fizz). Formerly
SPORTS (N163, U50, U88)
NW10, CROWN, 335 High Road, Willesden. Courage
(N162)
NW10, GREY HORSE. Truman (N164, U87)
NW10, RISING SUN. Truman (fizz) (N163, U37, U39)
NW10, SPOTTED DOG. Watney (fizz) (N164)
NW10, WHITE HART. Watney (fizz) (N164)
NW10, WHITE HORSE. Truman (fizz) (N164)
NW11, REFECTORY. Courage (N165)
ALPERTON, CHEQUERS. Watney# (W96)
EDGWARE, BEEHIVE. Watney (fizz) (N177, U78)
EDGWARE, FLYING EAGLE. Truman (N177)
EDGWARE, PRINCE OF WALES. Truman (N178)
EDGWARE, RAILWAY HOTEL. Truman (N178)
EDGWARE, WHITE LION, 435 Burnt Oak Broadway.
Truman. Note correct address. (N178)
HARROW, RAYNERS HOTEL. Truman (W113)
HARROW, ROYAL OAK. Truman (W113, U67)
HARROW, TITHE FARM HOUSE. Watney. Formerly
FARMERS. (W113, U44)
SUDBURY, FUSILIER. Truman (W144)
WEMBLEY, CENTURY HOTEL. Watney. Now **CEN-
TURY TAVERN** (W156)
WEMBLEY, HARROW TAVERN. Watney (W159, U50)
WEMBLEY, TORCH. Courage (W159)

APPLICATION TO JOIN CAMRA

I/We wish to become members of the Campaign for Real Ale Limited and agree to abide by the Memorandum and Articles of Association of the Campaign.

Name(s)

Address

.....Postcode

Signature.....Date

I/We enclose the remittance for individual/joint membership:

	Individual Annual	Joint Annual	Individual Life	Joint Life
UK and EEC	£12 <input type="checkbox"/>	£14 <input type="checkbox"/>	£120 <input type="checkbox"/>	£140 <input type="checkbox"/>
Rest of the World	£16 <input type="checkbox"/>	£18 <input type="checkbox"/>	£160 <input type="checkbox"/>	£180 <input type="checkbox"/>
Student/Unwaged	£6 <input type="checkbox"/>	£7 <input type="checkbox"/>		
Disabled	£6 <input type="checkbox"/>	£7 <input type="checkbox"/>	£60 <input type="checkbox"/>	£70 <input type="checkbox"/>
Retired	£6 <input type="checkbox"/>	£7 <input type="checkbox"/>	£60 <input type="checkbox"/>	£70 <input type="checkbox"/>

Send your remittance (payable to CAMRA Ltd) to:
Membership Secretary, CAMRA Ltd, 230 Hatfield Road, St Albans, Herts AL1 4LW



CAMRA CONDEMNS COURAGE DECISION

Will Scottish and Newcastle be allowed to buy Courage? A statement from Jonathon Evans, the DTI Minister, may allow the deal to go ahead. But CAMRA believes the week of consultation means that everything is still to play for.

The Department of Trade and Industry propose some relatively minor condition on the deal – but CAMRA believes that these are purely cosmetic.

“When Scottish and Newcastle have a third of the market, they will easily find their way around freeing up some of their smaller pubs” said CAMRA Campaigns Manager Stephen Cox. “The will have the financial muscle to simply tie them back through loans and other under-hand deals.”

CAMRA argues that the deal will reduce competition and choice, lead to higher prices, and trigger a round of further brewery takeovers and closures.

“It is a massive U-turn on competition policy, scrapping twenty years of concern. CAMRA will use the brief period of consultation to lobby heavily for a Monopolies Commission enquiry. We are relieved that the whole thing did not simply go through on the nod.”

The undertakings are particular weak – S&N must free 115 of their pubs from the tie, and also

allow IEL to renegotiate the supply agreement to 1000 IEL pubs (over two years).

In the former case, this is a tiny fraction of their tied estate, and who is to say that they will not re-tie with loans? – Standard S&N practice.

The second condition is very weak because S&N can bid for the supply contract to these 1000 pubs, so the likelihood is that they will all switch straight back to S&N!! IEL might get a slightly better price on the beer but so what, this won't cut prices in their pubs.

Continued from page 19

mean that the brewery or CAMRA should be promoting Old Brewery Bitter. If you mean that Sam Smith's should be advertising OBB better to raise its profile and therefore its sales, then I agree with you. If, on the other hand, you are suggesting that CAMRA should be advertising OBB then I am afraid we must disagree. CAMRA promotes certain beers which are voted for by its members and judged by expert tasters through the Champion Beer of Britain awards but we would not advertise a beer which its brewer is not prepared to.

Andy Pirson

It's all happening - and prices reduced again at



THE HEAD OF STEAM

by the Bus Terminal at
EUSTON STATION, NW1
Telephone 0171 388 2221

- * Mild & Bitter **99p** a pint on Sundays!
- * Stupidly low Polypin prices - from **79p** a pint!
- * **Rare Ales Beer Festival**
15 -19 September
- * **North West Beer Festival**
early October, including some **really rare** beers - *nudge, nudge, wink, wink, know what I mean ?!*
- * **Brewery Trips** by train to Adnams, Banks's, Caledonian, Hydes etc
- * Available for private parties
- * Hornby etc railway models **25% off**
Corgi models **25% off** with vouchers

Best pub in London? we reckon so - hope you do!!

Continued from page 2

OUTLETS - SOUTH WEST and WEST PUBS

SW1 BARLEY MOW
SW1 BUCKINGHAM ARMS
SW1 FOX & HOUNDS
SW1 MORPETH ARMS
SW1 ORANGE BREWERY
SW1 PAVOURS ARMS
SW1 RISING SUN
SW1 ROYAL OAK
SW2 HOPE & ANCHOR
SW2 CROWN & SCEPTRE
SW3 COOPERS ARMS
SW3 ROSE
SW3 SURPRISE
SW4 MANOR ARMS
SW4 ROSE & CROWN
SW6 DUKE OF CUMBERLAND
SW6 WHITE HORSE
SW7 ANGLESEA ARMS
SW8 OLD RED HOUSE
SW8 PRIORY ARMS
SW8 SURPRISE
SW10 FERRET & FIRKIN
SW10 KINGS ARMS, 190 Fulham Road
SW10 STARGAZEY
SW11 BEEHIVE
SW11 DUKE OF CAMBRIDGE
SW11 PLOUGH
SW11 UNITY
SW12 MOON UNDER WATER
SW12 NIGHTINGALE
SW12 PRINCE OF WALES
SW13 BULLS HEAD
SW13 RED LION
SW13 ROSE OF DENMARK
SW14 HARE & HOUNDS
SW15 FOX & HOUNDS
SW15 GREEN MAN
SW15 RAILWAY
SW16 HALF & HALF
SW16 PIED BULL
SW16 WHITE LION
SW17 CASTLE
SW17 J.J. MOONS
SW17 LEATHER BOTTLE
SW18 BREWERY TAP
SW18 COUNTY ARMS
SW18 HALFWAY HOUSE
SW18 OLD SERGEANT
SW18 PIG & WHISTLE
SW18 SPOTTED DOG
SW18 SPREAD EAGLE
SW19 ALEXANDRA
SW19 KINGS HEAD
SW19 PRINCE OF WALES, Morden Road
SW19 PRINCESS ROYAL
SW19 SULTAN
SW19 TRAFALGAR
CARSHALTON, RAILWAY TAV-ERN
CHESSINGTON, NORTH STAR
CHEAM, RAILWAY
HAM, HAND & FLOWER
KEW, COACH & HORSES
KINGSTON, ARTFUL DODGER
KINGSTON, CANBURY ARMS
KINGSTON, COCOANUT
KINGSTON, DRUIDS HEAD

KINGSTON, FIGHTING COCKS
KINGSTON, FINANCIER & FIRKIN
KINGSTON, FLAMINGO BREW-ERY CO.

KINGSTON, KELLY ARMS
KINGSTON, NEWT & FERRET
KINGSTON, PARK TAVERN
KINGSTON, SPRING GROVE
KINGSTON, TWO BREWERS
KINGSTON, WILLOUGHBY ARMS
KINGSTON, WYCH ELM
MITCHAM, CRICKETERS
MITCHAM, WHITE LION OF MOR-TIMER

NEW MALDEN, ROYAL OAK
RICHMOND, DYSARTS
RICHMOND, ORANGE TREE
RICHMOND, SHAFTESBURY ARMS

RICHMOND, TRIPLE CROWN
RICHMOND, WATERMANS ARMS
RICHMOND, WHITE CROSS
SURBITON, BUN SHOP
SURBITON, DENBY DALE
SURBITON, NEW PRINCE
SURBITON, RISING SUN
SUTTON, MOON ON THE HILL
SUTTON, NEW TOWN
WALLINGTON, WHISPERING MOON

W1 ARGYLL ARMS
W1 BEEHIVE, 7 Homer Street
W1 CLEVELAND ARMS
W1 MOON & SIXPENCE
W1 MORTIMER ARMS
W1 PRINCE ALFRED
W1 WESTMORELAND ARMS
W1 WINDMILL
W2 ARCHERY TAVERN
W2 ROYAL STANDARD
W3 KINGS ARMS
W4 WINDMILL
W5 PLOUGH
W5 RED LION
W5 ROSE & CROWN
W5 WHEATSHEAF
W6 BROOK GREEN HOTEL
W6 RICHMOND ARMS
W10 VILLAGE INN
W11 FROG & FIRKIN
W12 MOON ON THE GREEN
W13 THE FORESTER
W14 WARWICK ARMS
BRENTFORD, GLOBE
BRENTFORD, LORD NELSON
CRANFORD, QUEENS HEAD
FELTHAM, GENERAL ROY
HAMPTON COURT, KINGS ARMS
HAMPTON WICK, OLD KINGS HEAD

HAMPTON WICK, WHITE HART
HARLINGTON, CROWN
HAYES, BLUE ANCHOR
HAYES, MOON UNDER WATER
HAYES END, MOON & SIXPENCE
HOUNSLOW, BEAVER
HOUNSLOW, CROSS LANCES
HOUNSLOW, EARL RUSSELL
ISLEWORTH, COUNTY ARMS
ISLEWORTH, ROYAL OAK
ISLEWORTH, VICTORIA
SOUTHALL, BEACONSFIELD

ARMS
SOUTHALL, SCOTSMAN
TEDDINGTON, QUEEN DOWAGER
TEDDINGTON, WALDEGRAVE

ARMS
TWICKENHAM, EEL PIE
TWICKENHAM, NELSON
UXBRIDGE, PRINCE OF WALES
WHITTON, ADMIRAL NELSON
WHITTON, WHITE HART
OFF TRADE

W11 Grogblossom
CLUBS
ISLEWORTH, Western Geophysical Social Club
W1 Polytechnic of Central London
S.U. Bar, 104 Bolsover Street

OUTSIDE LONDON
ASCOT, CRANBOURNE TOWERS
BRIGHTLINGSEA, RAILWAY
BRIGHTON, EVENING STAR
BRIGHTON, SUSSEX YEOMAN
CATERHAM ON THE HILL, KING & QUEEN

CHERTSEY, CASTLE
COLCHESTER, ODD ONE OUT
CROXLEY GREEN, SPORTSMAN
EAST MOLESEY, KINGS ARMS
EGHAM, JOLLY FARMERS
EGHAM, PRINCE OF WALES
EGHAM, WHITE LION
KNEBWORTH (Herts), LYTTON ARMS

KNOWL HILL (Berks), OLD DEVIL
LALEHAM, FEATHERS
LEWES, GARDENERS ARMS
MANCHESTER, JOLLY ANGLERS
MORTIMER WEST END (Hants), RED LION

OUTWOOD (Surrey), DOG & DUCK
POTTERS BAR, CHEQUERS
READING, HOBGOBLIN
READING, HOP LEAF
READING, MONKS RETREAT
READING, THREE GUINEAS
ROTHERWICK (Hants), COACH & HORSES

SALISBURY, WYNDHAM ARMS
STEVENAGE, RED LION
SOUTHAMPTON, WATERLOO ARMS

STAFFORD, STAFFORD ARMS
STAINES, CAVALIER
STAINES, PHOENIX
STOW MARIES (Essex), PRINCE OF WALES

STRATFIELD SAYE (Hants), NEW INN

SUNBURY, FLOWER POT
SUNBURY, HARE & HOUNDS
SUNNINGDALE, ROYAL OAK
TILLINGHAM (Essex), CAP & FEATHERS

WALTON ON THAMES, REGENT
WATFORD, WEST HERTS SPORTS CLUB

WEYBRIDGE, PRINCE OF WALES
WHITCHURCH (Hants), YE OLDE
BREWERY INN
WORCESTER, BREWERY TAP & BREWERY
WORTHING, VINE

**THE RICHMOND & HOUNSLOW
BRANCH
of
THE CAMPAIGN FOR REAL ALE
PROUDLY PRESENTS**

**THE FOURTH
FELTHAM
BEER FESTIVAL**

**AT
FELTHAM ASSEMBLY HALL
HOUNSLOW ROAD, FELTHAM
from**

**THURSDAY 29TH SEPTEMBER
to**

SATURDAY 30TH SEPTEMBER

Opening Times:

Thursday 6.00pm to 10.30pm

Friday & Saturday 11.00am to 10.30pm

Admission £1.50 (£1.00 on Friday Lunchtime)

**CAMRA members admitted free at all times
on production of valid membership cards**