

August
1995

LONDON



30p

DRINKER



The Waldegrave Arms, Teddington

Photo by: Doug Scott

Vol 17

Produced by the London branches of the Campaign for Real Ale Ltd

No. 7

Where to Buy London Drinker

The following is a list of all the current outlets for London Drinker of which the editors have been informed. Full addresses are only given where there are two pubs of the same name in the same postal district.

OUTLETS — EAST and SOUTH

EAST PUBS

EC1 ARTILLERY ARMS
EC1 BISHOPS FINGER
EC1 MASQUE HAUNT
EC1 PHEASANT & FIRKIN
EC1 ROSEBERRY
EC1 SEKFORDE ARMS
EC1 SHAKESPEARE
EC2 OLD MONK
EC3 SWAN
EC4 BLACK FRIAR
EC4 OLD MONK
E1 BLACK BULL
E1 LORD RODNEYS HEAD
E2 CAMDENS HEAD
E3 IMPERIAL CROWN
E5 PRINCE OF WALES
E6 MILLERS WELL
E8 LADY DIANA
E9 FALCON & FIRKIN
E9 ROYAL STANDARD
E10 DRUM
E11 GEORGE
E13 VILLAGE
E14 QUEENS HEAD
E15 GOLDEN GROVE
DAGENHAM, LORD DENHAM
SE1 ANCHOR & HOPE
SE1 COPPER
SE1 FOUNDERS ARMS
SE1 GEORGE INN
SE1 GEORGE TAVERN
SE1 GOOSE & FIRKIN
SE1 GRAPES
SE1 HORNIMAN AT HAYS
SE1 KINGS ARMS
SE1 MARKET PORTER
SE1 MULBERRY BUSH
SE1 OLD BRIDGE HOUSE
SE1 PRINCE WILLIAM HENRY
SE1 SHIP, 68 Borough Road
SE1 ST GEORGES TAVERN
SE1 ST JOHNS TAVERN
SE1 TRINITY ARMS
SE1 WHEATSHEAF
SE1 WHITE HART, Cornwall Street
SE3 BRITISH OAK
SE3 HARE & BILLET
SE3 PRINCESS OF WALES
SE5 FOX ON THE HILL
SE5 PHOENIX & FIRKIN
SE6 BLACK HORSE & HARROW
SE6 TIGERS HEAD
SE7 McDONNELLS
SE8 CRYSTAL PALACE TAVERN
SE8 DOG & BELL
SE8 ROYAL GEORGE
SE9 BANKERS DRAFT
SE10 ADMIRAL HARDY
SE10 ASHBURNHAM ARMS
SE10 RICHARD I
SE13 FOX & FIRKIN
SE13 HOGS HEAD
SE16 BLACKSMITHS ARMS
SE16 MANOR TAVERN
SE16 MOBY DICK
SE18 COOPERS ARMS (Plaisted's)
SE18 EARL OF CHATHAM

SE18 ROSE'S (PRINCE ALBERT)
SE18 VILLAGE BLACKSMITH
SE19 ROYAL ALBERT
SE20 MOON & STARS
SE22 CRYSTAL PALACE TAVERN
SE25 ALLIANCE
SE25 GOAT HOUSE
SE26 DULWICH WOOD HOUSE
ADDISCOMBE, CLARET WINE BAR
BARKING, BARKING DOG
BARKINGSIDE, NEW FAIRLOP OAK
BEXLEY, BLUE ANCHOR
CROYDON, ARKWRIGHTS WHEEL
CROYDON, BUILDERS ARMS
CROYDON, DOG & BULL
CROYDON, FIDDLER & FIRKIN
CROYDON, GEORGE
CROYDON, PRINCESS ROYAL
CROYDON, ROYAL STANDARD
ILFORD, GREAT SPOON OF ILFORD
LOUGHTON, LAST POST
PURLEY, FOXLEY HATCH
SOUTH CROYDON, FIDDLER & FIRKIN
SOUTH CROYDON, RAIL VIEW
WALLINGTON, WHISPERING MOON

CLUBS

SE1 LENSBUURY BAR, SHELL INTERNATIONAL
SE3 BLACKHEATH & NEW-BRIDGE WMC
SE9 HOWARD CLUB
SE13 LEWISHAM LABOUR CLUB
SE18 PLUMSTEAD RADICAL CLUB
CROYDON, RUSKIN HOUSE

OFF TRADE

SE3 Bitter Experience, 129 Lec Road
BROMLEY, Bitter End, 139 Masons Hill

OUTLETS — WEST CENTRAL and NORTH PUBS

WC1 CALTHORPE ARMS
WC1 CITTIE OF YORKE
WC1 ENTERPRISE
WC1 OLD MONK
WC1 PAKENHAM ARMS
WC1 PRINCESS LOUISE
WC1 RUGBY TAVERN
WC1 SUN
WC1 THREE CUPS
WC1 UNIVERSITY OF LONDON
WC2 CROWN & ANCHOR
WC2 FULMAR & FIRKIN
WC2 GEORGE IV
WC2 HOGS HEAD
WC2 MARQUESS OF ANGLESEY
WC2 MOON & SIXPENCE
N1 129 UPPER STREET
N1 COMPTON ARMS
N1 EARL OF RADNOR
N1 GEORGE & VULTURE
N1 MALT & HOPS
N1 MARQUESS TAVERN
N1 PRINCE ARTHUR
N1 WENLOCK ARMS
N2 WELCH'S ALE HOUSE
N4 OLD SUFFOLK PUNCH BOWL
N4 TAP & SPILE
N4 WHITE LION OF MORTIMER
N4 WORLDS END
N6 OLD GATE HOUSE
N7 HOLLOWAY
N8 ELBOW ROOM
N8 RAILWAY TAVERN
N8 TOLL GATE
N9 LAMB
N11 BANKERS DRAFT
N12 TALLY HO
N13 WHOLE HOG
N16 NOBODY INN
N16 ROCHESTER CASTLE
N16 SHAKESPEARE
N17 CLUTTERBUCKS
N17 ELBOW ROOM
N17 NEW MOON
N19 DOG
N21 DOG & DUCK
N21 HALF MOON
N21 ORANGE TREE
N22 STARTING GATE
BARNET, MOON UNDER WATER
BARNET, WHITE LION
BARNET, YE OLDE MONKEN HOLT
COCKFOSTERS, TRENT TAVERN
EDGWARE, BLACKING BOTTLE
ENFIELD, MOON UNDER WATER
ENFIELD, OLD WHEATSHEAF
NEW BARNET, BUILDERS ARMS
NEW BARNET, LORD KITCHENER
NEW BARNET, RAILWAY BELL
OUTLETS — NORTH WEST PUBS
NW1 LORD NELSON
NW1 QUINNS
NW1 SPREAD EAGLE
NW2 BEATEN DOCKET
NW3 FLASK TAVERN
NW3 THREE HORSESHOES
NW4 CHEQUERS
NW4 WHITE LION OF MORTIMER
NW7 RISING SUN
NW8 PRINCESS ROYAL
NW9 J.J. MOONS
NW9 MOON UNDER WATER
NW10 COLISEUM
NW10 GRAND JUNCTION ARMS
NW10 OUTSIDE INN
NW11 WHITE SWAN
HAREFIELD, PLOUGH
HARROW, MOON ON THE HILL
HARROW WEALD, SEVEN BALLS
HATCH END, MOON & SIXPENCE
KENTON, NEW MOON
NORTH HARROW, J.J. MOONS
RUISLIP, J.J. MOONS
SOUTH HARROW, J.J. MOONS
STANMORE, MALT HOUSE
WEALDSTONE, ROYAL OAK
WEALDSTONE, SARSEN STONE
WEMBLEY, J.J. MOONS
OFF TRADE
N1 Beer Shop, Pitfield Street
NW6 Grog Blossoms, 235 West End Lane
CLUBS
NW4 HENDON SOCIAL CLUB, Middlesex University Bus, School

Continued on page 35

EDITORIAL

I was recently interviewed by Radio 4 on consumer choice. They particularly wanted to know if CAMRA and London Drinker Magazine had any views about whether customer choice had improved or declined since the government introduced their Bill designed to limit the powers of the major brewers to dictate to their "tied" pubs what specific beer, soft drinks and spirits they could sell.

The idea of the Bill (or 'Beer Orders') was to give a choice to landlords whose brewer owned over 2,000 pubs. In theory these landlords would be able to buy in one draught beer of their own choice from any source plus all their spirits and soft drinks. They would remain tied for lager, other draught beers and bottled beers. We all looked forward to a flood of different real ales from the small independent breweries being available all over the capital.

It was now that the major brewers became concerned at the reality of the new legislation. They simply could not afford to drop their spirit and soft drink prices to compete with the supermarkets and they viewed with dismay the idea of true competition in the draught ale market. The small and family independents' beers would win on price, quality and taste. So the brewers like Whitbread, Courage, Grand Met, Scottish and Newcastle and Bass Charrington simply started to use their influence to force the government to backtrack on the major changes proposed.

They firstly threatened to withhold their donations to the Party and lavished their shareholders' money on a huge advertising campaign to frighten customers into believing that the legislation would lead to wholesale pub closures. Even some of the family independents, who would not be affected by the changes, sided with the major brewers. The government was sufficiently rattled to withdraw many of the more contentious clauses. Now the brewers could set up pub-owning chains which were nominally separate concerns and tie these pubs to a 10-year agreement to stock the same beers, spirits and soft drinks as before. They then started to bully licensees by threatening increased rents and penalty clauses, if they failed to meet barrelage targets on the brewers' own products.

As a consequence the landlords who resisted by contriving to offer their customers the guest beer of their choice were either forced out of the trade or bullied into submission. Instead of the opportunities anticipated by the small independents, they started to lose accounts to the big brewers' indifferent products. Even the genuine free trade started to be bombarded by the big brewers who offered fantastic reductions to publicans to replace independent's beer with their own. In turn, in order to placate consumer anger, they struck deals with the family brewers to stock these products in their tied houses (but only) if they were given discounts by the family brewer. To keep up barrelage at the brewery, many succumbed to these promises, sacrificing quality for quantity.

Nowadays, it is extremely unusual to find any small independent's beer in a tied house of a big brewer. So, thanks to this government and the secret power of the big brewers, consumer choice has, in reality, declined rather than increased. So much for the much-vaunted freedom of choice and the consumer-led movement, that the Bill set out to achieve!

Chris Cobbold

FORTHCOMING FESTIVALS

1-5 Aug	GBBF Grand Hall, Olympia London W8
18-19 Aug	20th Portsmouth Guildhall, Portsmouth
8-10 Sept	Oxford Oxford Bus Museum Station Yard Long Hanborough
9 Sept	Maidstone Museum of Rural Life
4-7 Oct	Sandring, Kent Bedford Corn Exchange Bedford
10-11 Nov	2nd Woking Woking Leisure Centre Woking Park Strictly by ticket only

THE VILLAGE E13

"2nd"

BEER FESTIVAL

21st-28th AUGUST 1995

STAR
ATTRACTION
LUNCHTIME
MONDAY
28TH

THE
CHINGFORD
MORRISMEN

OPEN

11.30-3.00pm

5.00pm-11.00pm

FOOD
AVAILABLE
UP TO 8.00PM

GOACHER
GOLD STAR
5.1

ASH VINE
CHALLENGER
4.1

MIDHURST
MILD
3.3

CHERITON
DIGGERS GOLD
4.6

FOXLEY
BARKING MAD
4.3

COACH HOUSE
GUNPOWDER MILD
3.8

HAMPSHIRE
LIONHEART
4.2

NETHERGATE
UMBEL ALE
3.8

ULEY
OLD SPOT
5.0

R/ERIC
RECKED 'EM
5.2

H & O
LITTLE
MATTY
4.0

KELHAM
GOLDEN EAGLE
4.2

PLUS MANY MORE! SUBJECT TO AVAILABILITY.

THE VILLAGE PUBLIC HOUSE, 140 BALAAM ST, PLAISTOW E13. TEL: 0181-472 2024

IDLE MOMENTS

Well hello there! And how are you? Keeping well, I hope.

There, that's the false bonhomie out of the way, so let's get on with the usual rubbish starting as usual with the number puzzles, preceded only by last month's answers:

1. 24 Canterbury Tales by Chaucer
2. 105 New Pence in a Guinea
3. 2 Under Par is an Eagle
4. 49 Days from Easter Sunday to Whitsunday
5. 1048576 Bytes in a Megabyte
6. 25 Cents in a Quarter
7. 88 Constellations in the Sky
8. 3 Theatres make up the National Theatre Complex on the South Bank
9. 57 Old Farts
10. 15 Countries in the European Union

And now here are this month's. Sorry you are not getting your usual measure of merry quips in between but I'm feeling a bit knackered at the moment on account of the fact I'm not used to this summer weather. Still it will probably all be forgotten by the time you read this.

1. 10 WD and you are AO
2. 1876 FCTMBE and A
3. 6 is the N of the QG
4. 35,840 O in a T
5. 220 Y in a F
6. 13 P on a CP
7. 19 FO in a "WP"
8. 3 TK of E
9. 1980 LGBBFH at AP
10. 9 CPTC

There, that's done with for another month, so we can proceed to the brewery anagrams, via last month's answers:

1. HAL'S MATING LASTINGHAM
2. LAUNCH BORE BLUE ANCHOR
3. MUTTON OIL TOMINTOUL
4. THAT ME SKEWER, KEN?
HESKET NEWMARKET
5. ROSES ROT ROOSTERS

And here, as expected, we find this month's:

1. RE FIREMEN
2. HOLD WARM
3. WOUND ROBOT
4. MILD LOL
5. ROLL JOY, REG

Last month, you may recall (if you don't have a mental lock about it) that 5BY4 was subtitled "What a State". This month I've called it "Stillin a State" and as you have probably guessed by now you have, once again, to match ten states of the USA with their capitals. As usual the answers are at the end.

- | | |
|------------------|-------------------|
| 1. Utah | A. Charleston |
| 2. Michigan | B. Phoenix |
| 3. Vermont | C. Salt Lake City |
| 4. Connecticut | D. Baton Rouge |
| 5. West Virginia | E. Augusta |
| 6. Maine | F. Bismark |
| 7. New Hampshire | G. Montpelier |
| 8. Arizona | H. Lansing |
| 9. Louisiana | I. Concord |
| 10. North Dakota | J. Hartford |

In case you didn't notice, the states were in the left hand column with numbers and the capitals were on the right with letters. There, I'm glad we've got that cleared up; now we can get on with the General Knowledge questions. Well actually, these are last month's answers but if you can work out what all the questions were you can really show all your friends what a clever dick you are.

1. Alaska – It is Mount McKinley.
2. The Corinth Canal in Greece which links the Aegean and Ionian Seas.
3. Lake Huron – it is Manitou Lake on Manitoulin Island.
4. Peru – it is called El Cañón de Colca.
5. Mount Erebus on Ross Island in Antarctica (77°35'S)
6. Quantum mechanics
7. His son Richard Cromwell
8. Le Corbusier
9. James Abbott McNeill Whistler (the one with the Mother)
10. Sir Robert Watson-Watt

And now – yes you've guessed – these ARE this month's questions:

1. Last month Martina Navratilova won her nineteenth Wimbledon championship. How many did Billie Jean King win?
 2. Who lives at No.12 Downing Street?
 3. A well known novelist, by what name is David Cornwell better known?
 4. Which was the first garden city built in Britain?
-

5. Into what sea does the River Volga flow?
6. We all know that Humphrey Bogart and Katharine Hepburn starred in the film "The African Queen", but who wrote the book from which the film was made?
7. Milton Street, EC2 had another name until 1830 which came to stand for the lowest form of journalism. What was it originally called?
8. The Geffrye Museum opened in 1914 in Bethnal Green. Of what is it a collection?
9. Where was John Bunyan incarcerated when he wrote Pilgrim's Progress?
10. And what is the name of the main character in Pilgrim's Progress?

And so we say farewell to this month's Idle Moments (chance would be a fine thing!) pausing only briefly to look at the answers to this month's 5BY4:

1-C, 2-H, 3-G, 4-J, 5-A, 6-E, 7-I, 8-B, 9-D, 10-F.

There, didn't go too badly, did it?
Andy Pirson

REAL ALES IN ABUNDANCE

With July moving to a close, the time of the Great British Beer Festival is almost upon us. CAMRA's flagship event is once again taking place at Olympia during the first week of August and once again the largest range of beer available anywhere in the UK will be on offer.

There will be 310 British Real Ales along with 27 British bottled beers, 150 foreign beers and 40 ciders and perries giving over 500 products to choose from! In fact there will be 250,000 pints in all, being served at the rate of 100 pints per minute whilst open.

The real ales will have come from every corner of the UK and will include those beers that will have participated in the Champion Beer of British competition on the Tuesday and this year there will be a few real ales from the US to mark the revival of real ale the other side of the Atlantic. Another revival is that of British bottle conditioned beers, from the handful available only a few years ago, there have been a staggering 20 new products in 1995 and more breweries looking to launch products and this year the Bottled Beer stand has have to move into the West Hall due to its expansion.

With music from the likes of Alan Price, Gordon Giltrap and Mad Jocks & Englishmen as well as classical music, jazz and a brass band, all who attend can look forward to excellent entertainment and a variety of pub games are looking forward to giving away over 6000 prizes will be given away throughout the week.

Once again British Rail will run a full service between Willesden & Clapham Junctions and London Transport will be operating their tube shuttle between Earl's Court & Olympia ensuring easy access via the public transport network.

The costs and opening times are as follows

Tues 1st - Thur 3rd evenings: 5pm - 10.30pm £3.50

Wed 2nd - Thur 3rd lunch: 11.30am - 3pm £1.00

Fri 4th: 11.30am - 10.30pm £4.50 (£3.50 before 1.30pm)

Sat 5th: 11am - 7pm £3.50

Doors shut 1/2 hour before the festival closes

For further details contact 01727 867201

The Hobgoblin

Broad Street, Reading

presents

The (Alternative) Reading (Beer) Festival

August Bank Holiday

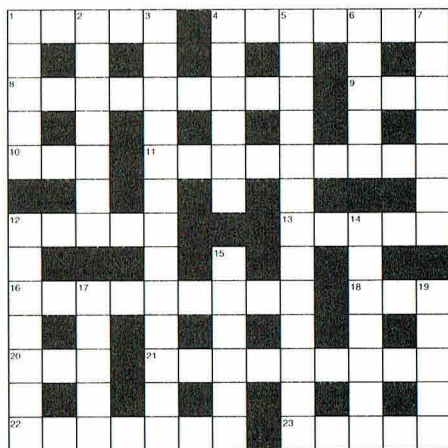
If sitting around in a muddy field isn't quite your thing (or you just want a few hours rest from it!) call into **The Hobgoblin** in Reading town centre this Bank Holiday weekend to find at least 7 ales, 2 real ciders and a perry all at £1.40 a pint. There is an alternative to site bar prices!

- ★ Wobbly plastic glasses optional for the genuine Rock Festival feeling.
- ★ Plenty of toilet roll in stock for desperate Festival goers.
- ★ Inexpensive grub

LONDON DRINKER CROSSWORD

Compiled by DAVE QUINTON

£10 PRIZE TO BE WON



ACROSS

- 1 + 4. Well, time I was off, flower. [5,7]
8. Murdered saint, called, went first. [9]
9. Acted in Candide. [3]
10. Garland of purple irises. [3]
11. Unusual use I chose for refrigerators. [9]
12. Gel provides help. [3,2]
13. In the haystack you'll find rubbish. [5]
16. Take fruit after cancer, more fruit. [4,5]
18. Skill of the spear thrower. [3]
20. Abstainer has no drink. [3]
21. Charmed to find way in before dick head. [9]
22. Princess, I hear, unpleasant to royal family. [7]
23. Fork out about two pounds to be friendly. [5]

DOWN

1. Sails off for rope material. [5]
2. Being wrong about a piece of jewellery. [7]
3. They serve in court. [6,7]
4. Case for pushing everyone into the water. [6]
5. She tended to be lit up. [4,2,3,4]
6. Factories attempt to avoid river. [5]
7. Style of the shelter shows diffidence. [7]
12. Found cold tea upsetting. [7]
14. Given opportunity, left eastern church. [7]
15. Skinhead crazy, dotty! [6]
17. Continue stage career here. [5]
19. Father enters play now. [5]

Winner of the prize for the June Crossword:

Pete Large, Ilford

Other correct entries were received from:

Aaron Aardvark, Paul Adams, Tony Alpe, Mark Antony, John Blundell, Robin Bolt, Andrew Bovey, Geoff B, Andy Camroux, Neil Chapman, A.P. Comaish, Chas Creasey, Perry French, H. Gardner, Eileen Graves, Paul Gray, J.E. Green, Guy & Alison, John Heath, I.H. Jar-donne, Doug King & Queen, M.J. Moran, Al Mountain, Ms. Dotty Muldoon, Rab Noolas, David Oddy, Nigel Parsons, Super Scooper, Old Smokey, Robert Stafford, Tarnya & Stephen, Bill Thackray, Two Dead Goldfish, Neil Wal-ton, Martin Weedon, Spud Whale, David Woodward, Yak (pregnant)

There were also 3 incorrect entries.

Name.....

Address.....

All correct entries received by first post on 30th August will be entered into a draw for the prize.

Prize winner will be announced in the October London Drinker.
Solution next month.

All entries to be submitted to:

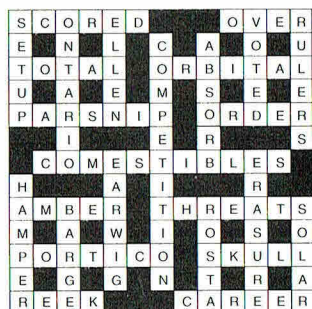
London Drinker Crossword

25 Valens House

Upper Tulse Hill

London SW2 2RX

LAST MONTH'S SOLUTION



King & Barnes

FINE SUSSEX ALES

New Beer



Available in all K&B pubs and
selected Free Trade outlets

Guest Beer



Available w/c 28 August



For more information on the Brewery,
the Pubs, the beers or guided tours
please ring or write to:

King & Barnes Ltd
18 Bishopric, Horsham, W.Sx. RH12 1QP
Tel: 01403 270470

WITH FRIENDS LIKE THESE.....

How would you feel if an old acquaintance (maybe even a friend) suddenly kicked you in a sensitive area? No, I don't mean the physical pain side of it – rather the mixture of shock and surprise that they had actually done such a thing. I ask this because it seems very likely that devotees of Sam Smith's traditional beers will shortly be experiencing such a feeling.

Last month we carried a short article by Doug Scott under the heading "Real Sam Smiths To Go", reporting that Sam Smith's, who proudly proclaim themselves as Yorkshire's Oldest Brewery, had withdrawn handpumped beer from one of their landmark pubs, The Swiss Cottage, and noting that from the evidence to hand this is going to happen in the majority of their pubs in the South.

The evidence for this article is a letter from their Advertising Manager, Mr. C.G.Auton in which he states, "It is a fact that it is impossible to get wooden casks totally sterile. We have found that when we send it long distances, our wooden cask beer is not as consistent as when served close to home. Therefore some of the handful of pubs our brewery has which are a long way away are being changed to our Sovereign Bitter served by mixed gas. As our Sovereign Bitter is not produced in naturally conditioned form, it is quite clear to the customer where this has happened."

The letter finishes up: "Where a pub is a very long way away is very traditional. (No that's not our misprint) we will however, be keeping the wooden cask beer on sale arranging the deliveries specially so that the beer gets to the pub within 12 hours of leaving the brewery."

Considering that all of Sam Smith's advertising emphasises the company's traditional values, it comes as a great surprise that they should apparently just abandon real beer in a sizeable chunk of their estate. That is the reason for my deliberately emotive opening paragraph. And please do not think that Mr. Auton's closing sentence means that most of their London pubs will get real beer. From my

reading of his letter, the whole emphasis is that real beer is going from most outlets and those pubs which continue to get OBB and Museum Ale will be the special cases.

I know that a lot of our readers are also CAMRA members so a lot of you will probably have also read the short article on the back page of the July What's Brewing under the heading "Quality problems for Sam's". In this article a brewery spokesman is reported as saying that "the move was due solely to quality problems caused by the Swiss Cottage's low turnover of cask ales and exacerbated by the brewery's use of wooden barrels."

Somehow these stories do not hang together – on one hand they are presenting the Swiss Cottage almost as a one-off while on the other they are saying that supplying cask beers will be the special case. We can only wait and see what happens but I have been told that cask beer has already disappeared from the Gazebo in Kingston and also that a new Sam Smith's outlet in Edinburgh has been selling only Sovereign keg since it opened.

Now why, I ask myself, are Sam Smith's unable to guarantee the quality of their cask beer in their London pubs - the distance? -I think not. As long ago as July 1978, when I was the editor of the Richmond & Hounslow CAMRA Branch Newsletter I recorded our dismay that one of London's best, if tattier, free houses, the Tudor Close in Richmond, was being turned into Sam Smith's first tied house in London. At that time we received a letter from the brewery in which they stated: "In fact it is our aim to ensure that it is the finest beer not only being served, but ever having been served in Richmond." High ideals indeed! Whatever happened to them? Obviously the distance was not considered a barrier to quality seventeen years ago so why is it one now? Surely Tadcaster is no further from London now than it was then.

And what about getting the beer from brewery to pub in twelve hours. In my humble opinion this is about as scientific a solution to the problem as shaking a dried

rattlesnake at the beer. Consider this: when the beer has made its maximum twelve hour journey to the pub it will then be left to settle and condition before it is served. With weekly deliveries some of the beer will have left the brewery for over seven days before it reaches the bar. No, time is not the problem - temperature is, and if the beer is carried in temperature controlled drays (Sam Smith's is - I've seen them) this is not a problem at all. The bigger problem with wooden casks is getting the empties back to the brewery for cleaning and refilling before they go bad; after all, the alcohol in beer has mild antiseptic qualities.

But I feel that a greater barrier to quality of cask beer is the training of cellar staff to look after all aspects of beer management including stock control. This whole subject was first raised by a CAMRA member in Kilburn, Mr. Eddie Simmonds. In a piece he submitted to CAMRA headquarters for

possible publication in What's brewing he reported that the manager of a Sam Smith's pub in the West End told him, "It is the undeclared policy of Samuel Smith's to phase out these ales in favour of the nitrokeg beers in all their pubs in the South, as they are experiencing problems in recruiting staff with enough experience to be able to keep a decent cellar, and nitrokeg beers are easier to keep and handle." Mr. Simmonds goes on: "When questioned, he admitted that there were apparently no plans for the brewery to run a training programme for staff to learn how to deal with traditional ales."

So that in a nutshell would appear to be the real problem. Still, Sam Smith's are being consistently traditional in one respect - they are catching up with what the Big Six were doing back in the fifties; and they seem to know what we customers really want better than we do ourselves.

Andy Pirson

THE GOLDEN DUCK

(ABV - 3.8%)

Following the success of Kursaal Flyer, we are pleased to announce the impending launch of the second in the series of beers to commemorate different aspects of Essex life, **The Golden Duck.**

High summer is upon us and village cricketers will already have dusted off their whites and displayed their talents on the greens and parks of the county. Village cricket is a most important summer sporting activity in our county; an opportunity for all participants and spectators to enjoy an afternoon in the sun followed by a beer or two in the pub, away from the cut and thrust of modern life.

THE GOLDEN DUCK compliments such occasions ideally. Named after the ignominious first ball dismissal, this beer is brewed with a high percentage of what malt used in the mash tun together with a malted barley blend of Maris Otter and Halcyon. The result is a classic golden summer ale with a dry refreshing flavour and a pronounced Styrian Golding hop character. It is an ideal beer for slaking one's thirst after a hard afternoon's cricket. Perhaps by the jugful to celebrate a half century or five

wickets taken or by the pint to seek solace after having made the long walk from the pavilion to the square only to fail to successfully negotiate the first delivery!

A CONSTANTLY CHANGING SELECTION OF ALES FROM MICRO BREWERIES UP AND DOWN THE COUNTRY

- phone Gary for details of
which ales are on

also Wheat Beers, Thatchers
and Westcroft Traditional
Ciders, Belgian Fruit Beers and
Fruit Wines

Function Room for hire

CAMRA SW London Pub of the Year

Priory Arms

Lansdowne Way, Stockwell, SW8
(5 minutes Stockwell Tube)
Telephone 0171 622 1884

BRANCH DIARY

If your branch is not mentioned below, please ring the branch contact. Dates for August of which we have been notified are given below. Branches please send information to Andy Pirson. Branch contacts page 34.

LONDON PUBS GROUP: Wed 23 (8.00) Business Meeting. MARKET PORTER, 9 Stoney Street, Borough Market, SE1.

CROYDON & SUTTON: Tue 1 (6.30) Social at the Great British Beer Festival. Phone Branch Contact for details - Tue 8 (6.30pm) Brewery Visit to Harveys, Lewes. Phone Steve Collins for details on 0171-930 4041 (W) - Thu 10 (8.30) Social. RAILWAY TAVERN, 47 North Road, Carshalton - Sat 19 (11.00am) Annual Pub Crawl of Brighton. Meet at East Croydon BR Station - Wed 23 (8.00) Croydon Pub Crawl. Meet DUKE OF YORK, 50 Canterbury Road (depart 8.45) - Thu 24 (8.00) Branch Meeting. WINDSOR CASTLE, 378 Carshalton Road, Carshalton (in the Cottage Room).

EAST LONDON & CITY: Mon 7 (8.00) Branch Meeting. FALCON & FIRKIN, Victoria Park Road, E9 (Now has upstairs room) - Fri 11 (7.00) Branch Social; E1 Crawl. CAPTAIN KIDD, 108 Wapping High Street then HOLLANDS (8.00), Brayford Square; LORD RODNEYS HEAD (9.00) (with optional curry stop); WHITE HART (10.00), 1 Mile End Road - Sun 20 (12.00) Lunchtime Social. MASQUE HAUNT, Old Street then BRITANNIA (1.00), Ironmonger Row; WENLOCK ARMS (2.00) - Tue 5 Sep (8.00) Branch Meeting. Venue to be announced - Fri 8 Sep Branch visit to Chappel Beer Festival. Meet at Liverpool Street booking office (5.00 for 5.18 train, change at Marks Tey) or at Festival.

ENFIELD & BARNET: Wed 9 (9.00) Social. KING WILLIAM IV, Hertford Road, Lower Edmonton, N9 - Wed 16 (7.30) Annual BBQ. Southgate Cricket Club, Waterfall Road, Southgate, N14 - Tue 22 (9.00) Social. SALISBURY, Percival Road, Bush Hill Park - Thu 31 (9.00) Social & London Drinker Pickup. KINGS HEAD, High Street, Barnet.

KINGSTON & LEATHERHEAD: Thu 10 (8.30) Branch Meeting. ALBION, East Molesey - Fri 25 (8.00) Pub Crawl of Weston Green. Start GREYHOUND then CRICKETERS.

NORTH LONDON: Tue 1: No Social owing to Great British Beer Festival - Tue 8: No Social - Tue 15 (8.00) Two Pub Social. QUEENS ARMS, 1 Kilburn High Road, N6 then CLIFTON (9.30), 96 Clifton Hill, NW8 (Kilburn High Road BR/ Kilburn Park Tube) - Tue 22 Out of Area Social. LYTTON ARMS, Old Knebworth, Herts. For details phone Aidan Kerrigan on 0181-963 0120 (H) - Tue 29 (8.30) Branch Meeting. THREE CUPS, Sandland Street, WC1 (Holborn/Russell Square Tube) - Sat 2 Sep (1.00pm) Lea Navigation Ramble & Pub Crawl with ELAC and E&B Branches. Start PRINCE OF WALES, Lea Bridge Road, E5 then ANCHOR & HOPE (2.30), 15 High Hill Ferry, E5 (Clapton BR); WATER EDGE INN (4.30), Stonebridge Lock (off A1055), N17; GREYHOUND (6.30), 425 Ordnance Road, Enfield Lock - Tue 5 Sep (8.00) Two Pub Social in N1. ISLAND QUEEN, 87 Noel Road then PRINCE ALBERT (9.00), 16 Elia Street (Angel Tube).

RICHMOND & HOUNSLOW: Tue 15 (8.00) Committee Meeting. TRIPLE CROWN, Kew Foot Road, Richmond (Open to all from 9.00) - Mon 21 (8.00) Branch Meeting. RED LION, 94 Linkfield Road, Isleworth - Thu 31 (8.00) Teddington Crawl. Start TIDE END COTTAGE, 8 Ferry Road then including KINGS ARMS (9.00), 69 High Street; BUILDERS ARMS (10.00), 38 Field Lane.

SOUTH EAST LONDON: Wed 9 (8.00) Branch & Committee Meeting. PIE & KILDERKIN, Forest Hill, SE23 - Tue 15 (8.00) Social. OLD POST OFFICE, Eltham, SE9 - Wed 23 (7.30) Good Beer Guide Check. Meet at CRYSTAL PALACE, Tanners Hill, SE8 - Thu 31 (8.00) Come and play petanque, French "bowls". DULWICH WOOD HOUSE, Sydenham Hill, SE26

SOUTH WEST ESSEX: Wed 9 (8.30) Social. FOUNTAINS HEAD, 157 Ingrave Road, Brentwood - Tue 15 (8.30) Social. PRINCE OF WALES, 63 Green Lane (A1083), Ilford - Thu 24 (8.30) Social. BRAVE NELSON, 138 Woodman Road, Warley - Tue 29 Sawbridgeworth Beer Festival. Memorial Hall, Forebury (60 to 70 beers) - Tue 5 to Sat 9 Sep: 9th Chappel Beer Festival. EAST ANGLIAN RAILWAY MUSEUM, Chappel & Wakes Colne Station, just off A604 between Colchester and Halstead near Chappel Viaduct. 2 Big Bars & Shunters Arms.

SOUTH WEST LONDON: Tue 1 Social at Great British Beer Festival. Meet at Young's Bar 7-

7.30pm – Sun 6 Cricket Vs Steve's XI. Morden Rec, Farm Road, Morden – Sun 27 Cricket (to be confirmed). Morden Rec, Farm Road, Morden

WEST LONDON: Sun 6 GBBF Disassembly Day. 9.00am at Olympia then WARWICK ARMS, W14 – Wed 16 (8.00) Branch Meeting. BEEHIVE, 7 Homer Street, W1 – Wed 23 (8.30) Garden Social. SALUTATION, 154 King Street, W6 – Thu 31 (6.00) Early Evening Social. WETHER-SPOONS, Victoria Station, SW1.

WEST MIDDLESEX: Tue 1 to Sat 5 (times variable) Great British Beer Festival. Don't go anywhere else! – Tue 8 (8.30) Social. BLACK HORSE, 1018 Harrow Road, Sudbury – Wed 16 (8.30) Branch Meeting. DUKE OF YORK, Steyne Street, Acton, W3 – Mon 21 (8.30) Social. MALT-HOUSE, Stanmore Hill, Stanmore – Thu 31 (8.30) Social & London Drinker Pickup. RED LION & PINEAPPLE, Uxbridge Road, Acton, W3 – Wed 6 Sep (8.00) 21ST BIRTHDAY PARTY. QUEENS HEAD, 123 High Street, Cranford.

Deadline for the September edition, 1st August. Material for October to arrive by 1st September. Please be sure to send all diary material to Andy Pirson.

EAST SUSSEX BREW PUBS AND WHERE TO FIND THEM

In CAMRA's 1991 Good Beer Guide there is only one brewery, Harveys, and one brewpub, Kemptown, listed for East Sussex. This year's guide lists five brewery/brewpubs and, as I found out this summer, there are more emerging onto the scene.

My job required me to go to Newhaven for three weeks, a not unpleasant experience as I had worked there before four years ago. On only my second day I contacted Harveys and asked if there were any trips around the brewery. That evening I was shown round with a group of people from the rural community council by head brewer, Miles Jenner. Miles' father was head brewer before him and the family has close links with Harveys. The brewery is of the tower type and is an architectural beauty. A listed building, it was designed by the same Victorian architect who built the Hook Norton brewery. There is currently a two year waiting list for brewery trips but it is well worth the wait.

At Harveys I met a CAMRA member from Lewes who told me about two brewpubs, Cuckmere Haven and Two Sawyers. Unfortunately I was unable to visit the latter at Pett, just outside Hastings, but I did visit Cuckmere Haven. This brewery is situated in what appears to be a disused electricity substation in the garden of the Golden Galleon at Exceat Bridge, Seaford. The pub is owned and run by Stefano and offers the full range of Cuckmere beers in addition to at least six others. There is also a varied menu offering good food. Stefano's brother-in-law, Alan runs the brewery, ably assisted by Ron and a

myriad of other helpers. The plant was previously sited at the Gribble Inn and has been adapted accordingly and there are plans to increase the brewing capacity by moving to a new building once the pub extension is complete. The beers currently brewed are Best (4.1%), Saxon King Stout (4.2%), Downland Dancer (4.4%), Gentlemans Gold (4.5%), Gunner (4.7%), Dark Velvet Mild (4.7%) and Golden Peace at 5.5% brewed for VE Day. Each beer is a separate brew and the brew run is between 3 and 4 barrels. At the moment Alan and Ron are brewing every day to meet demand, the beers finding themselves as far away as Peterborough and Derby.

While at Cuckmere Haven I heard of another locally brewed beer, 1066 Country Bitter. Later in a Beards house I found that it is the first brew from the White Brewery run by David White, a Beards cellarman.

Elsewhere in Brighton I came across another new brewpub, the Skinners Brewery at the Evening Star. I tried both the Pale Ale and the 4.2 but the Ginger Beer they had, although tempting, was a bit too strong. The pub is sister to the Gardeners Arms in Lewes which is also worth a visit.

Before coming to an end I must mention where I stayed, the Good Beer Guide listed White Lion in Seaford. This is an excellent pub which offers good accommodation and is an excellent starting point for visiting the breweries and brewpubs of East Sussex. So if anyone fancies somewhere different to go this summer, why not give it a try.

Doug Scott

THE FIRKIN BREWERY

**PUB BREWED ALES AVAILABLE
IN ALL FIRKINS:**

**3.5%ABV BITTER
4.3%ABV BEST BITTER
5.6%ABV DOGBOLTER**



THE FIRKIN SPECIAL BREWS:

**3.4%ABV MILD
5.0%ABV GOLDEN GLORY
4.6%ABV FIRKIN STOUT**

**ALSO FEATURING OUR VERY
OWN FIRKIN BREWED
GUEST ALES OF THE MONTH.**

**FIRKIN FODDER,
FRESHLY MADE ON THE
PREMISES -
JUST LIKE OUR BEER!!**

FALCON & FIRKIN

160 Victoria Park Rd, London E9 7BT • Tel: 0181 985 0693

FARRIER & FIRKIN

74-76 York St, London W1H 1DP • Tel: 0171 762 1513

FERRER & FIRKIN

114 Lots Rd, London SW10 0RJ • Tel: 0171 352 6645

FETTLER & FIRKIN

15 Chalsworth St, London W2 3QL • Tel: 0171 733 5918

FIDDLER & FIRKIN

14 South End, Croydon CR0 1DL • Tel: 0181 680 9728

FINMOCK & FIRKIN

100 Upper St, London N1 0NP • Tel: 0171 276 3467

FLICKER & FIRKIN

1 Dukes St, Richmond, Surrey TW9 1HP • Tel: 0181 332 7807

FRIGATE & FIRKIN - OLYMPIA

24 Blythe Rd, London W14 0HA • Tel: 0171 602 1412

FLOWER & FIRKIN

Kew Gardens Station, Surrey TW9 3BZ • Tel: 0181 332 1162

PHARAOH & FIRKIN

90/90a Fulham High St, London SW6 • Tel: 0171 731 0732

FLAUTIST & FIRKIN

588 Mile End Rd, Bow, London E3 4PH • Tel: 0181 981 3634

FLOUNDER & FIRKIN

54 Holloway Rd, London N7 8JP • Tel: 0171 609 9574

FOX & FIRKIN

316 Lewisham High St, London SE13 3HL • Tel: 0181 690 8925

FRIAR & FIRKIN

120 Euston Rd, London NW1 2AL • Tel: 0171 387 2419

FRIESIAN & FIRKIN

87 Rectory Grove, London SW4 0DR • Tel: 0171 622 4666

FINANCIER & FIRKIN

43 Market Place, Kingston Upon Thames KT1 1JQ • Tel: 0181 974 8221

FISH & FIRKIN

53 Alexandra Street, Southend SS2 6ES • Tel: 01702 491984

FLICKER & FIRKIN

1 Dukes Street, Richmond TW9 1HP • Tel: 0181 332 7807

FLYMAN & FIRKIN

166-170 Shaftesbury Avenue, London WC2H 8JR • Tel: 0171 740 7109

FROG & FIRKIN

96 Eastbrooke Grove, London W11 1PY • Tel: 0171 2295663

PHOTOGRAPHER & FIRKIN

23-25 Ealing High Street, London W16 8ND • Tel: 0181 567 1140

FUSILLIER & FIRKIN

7-8 Chalk Farm Road, London NW1 2AL • Tel: 0171 485 7858

FULMAR & FIRKIN

51 Parker Street, London WC2B 5PS • Tel: 0171 405 0590

GOOSE & FIRKIN

47 Borough Road, London SE1 1DR • Tel: 0171 403 4390

PHEASANT & FIRKIN

166 Goswell Road, London EC1 1DT • Tel: 0171 253 7429

PHEONIX & FIRKIN

Windor Walk, London SE5 3BR • Tel: 0181 701 8282

USQUE AD MORTEM BIBENDUM

LETTERS TO THE EDITORS

Dear Editors,

Two points arise from recent crawls.

1. Sam Smiths – I've noted the concerns about removing real ale from London, replacing with keg, and the brewery's subsequent assurances. I very much hope Sammys keep their word – most of their outlets serve beer of a consistently high standard and at sensible prices (for London). I would wish to single out one for particular praise – the Glasshouse Stores in Brewer St. behind (north of) Piccadilly Circus. Gyan Mathur introduced me to this hostelry earlier this year and we have revisited it several times. Every drop has been at least 8/10, and the pint we had in the early evening of 1st July was probably the best of any I've had this year (but see point 2!). Keep up the good work!

2. Fullers – Drayton Court Hotel, West Ealing.

This pub, known locally as "Dracula's Castle" due to the Gothic aspects of its late – C19th design, did pop into the GBG in the mid to late 80s, and the ESB has always been pretty good. But the pub was becoming increasingly tatty, and refurbishment was always 2 years after the date one asked (we'd ask at least once each year). Well, finally Fullers have grasped the nettle and given it the full monty. The main bar has been remodelled with new furniture, carpets and paint; the back of that bar has been opened out to include a cast-iron patio overlooking the garden; the garden has been done over completely; the toilets have been relocated and are clean and fresh (well, the gents at least!); and the big function room downstairs has been re-done to a similarly high standard. Everywhere is accessible.

This would be irrelevant to many if the beer wasn't good. However, the new guv'nor is Don Witz from the Blackbird in Earl's Court; he and his staff are beer enthusiasts. Our visit on Monday 3 July coincided with a meeting of Area Managers etc. which was superb timing – we were able to tell them, as well as Don the manager, that the beers that night were quite exceptional. The Chiswick (real at last here!) came out at 8/10; the Summer Ale at 10/10; the London Pride at 10/10; and the ESB at 10/10 (I'd've given it 11). Quite incredible;

frequent re-visits are intended, to ensure maintenance of this standard.....

Yours sincerely,

Peter Wicks – W.Middx branch

Dear Editors,

Having read in July's 'London Drinker' that Samuel Smiths intend to withdraw real ale in the capital. I, like many other CAMRA members, will be registering my strong protest to the brewery. I am sure that most readers will agree Sam Smiths pubs tend to offer, **at the moment**, one of the best kept and best value pints of real ale in London. However, one particular "Sams" hostelry is already tarnishing the image of its brewery.

The Angel in Thayer Street, Marylebone, is run by a surly inane-looking character, who ensures that customers never receive a warm Yorkshire welcome. The only time he and his staff manage to raise a smile is when foreign tourists arrive a minute after closing time. The baffled visitors are told with glee that the pub, full of drinkers, is closed.

The "jolly" manager prides himself on having never knowingly sold a full pint. Customers are lucky if their glass contains three-quarters of a pint of their favourite bitter. Requests for pints to be topped up are met with incredulity – and the customers are made to look like penny-pinching skinflints, when the boot is actually on the other foot.

Once last orders has been called – early! – the psychological warfare really starts. Fruit machines are turned off – whilst customers still have money in them. The jukebox is turned off abruptly. Once time has been called. Customers are herded out. Vacuum cleaners are turned on. With 10 minutes drinking up time left, the pub has been emptied.

The 'Angel Experience' begs the question of whether pubs are run for the benefit of staff or customers. In the case of the Angel you do not have to be a genius to know the answer. Come on Sam Smiths! Do not allow one rotten apple to spoil the barrel. But if this particular "Sams" pub stops selling real ale, not many tears will be shed.

Yours sincerely

DISAPPOINTED SAM SMITHS CUSTOMER
London SW2 – Name & Address Supplied

Dear Editors

In response to the "Ebenezer Scrooge" piece entitled "Rip-Offs" in July's "London Drinker", I have to reject what he says entirely and emphasise to CAMRA members and other real ale drinkers that our prices are NOT excessive and certainly not a rip-off. They vary very widely and reflect our buying price – the more expensive to buy, the more expensive on the pump.

Our regular beers and their prices are:

Highgate Dark (Bass)	- £1.29
B & T Mild	- £1.39
Shepherd Neame Master Brew	- £1.59
Draught Bass	- £1.79
Bateman Salem Porter	- £1.99
Hop Back Summer Lightning	- £2.09
Biddenden Cider (8% ABV)	- £2.20

I don't think these prices are excessive – **DO YOU AGREE?** If you mixed the Biddenden with water to get a Woodpecker strength cider, it would be about £1.15 a pint.

We believe Summer Lightning is one of Britain's very best beers and are delighted to be able to sell it at all. It is one of our biggest selling beers.

Our guest beers (nearly always 3) are mainly in the range £1.60 to £1.85 dependent on our buying price. Banks's Mild at £1.59 and Banks's Bitter at £1.69, for example are very reasonable.

Incidentally, it may have escaped your contributor, but we have spent a fortune converting an awful building into a superb bar with a brilliant set of railway artefacts we have on display. First floor bars are not easy places to trade from and we are working very hard (and very expensively) to build our trade. Your contributor's comments do not help. What we need is support from CAMRA, not castigation. It's always easier to pick up on an odd contentious point rather than the mass of positive points.

We have had tremendous comments from people all over the country. Please come and see for yourself what a great place The Head of Steam is. And you can bring the kids – we have a Children's Certificate.

We are currently developing a programme of brewery trips and auctions, and have special deals being set up for our customers with London Transport Museum and other steam railway operators.

We're improving London's drinking choice – support us!

Yours sincerely

for The Head of Steam Ltd

Tony Brookes

So what do London drinkers think? – Ed

Dear Editors,

Re: CATFORD BEER FESTIVAL 1995

The organisers of the Catford Beer Festival would like to apologise to all of those people who attended this year's event and were disappointed with the range of beers on sale, especially on the Friday evening.

Our original order was for 84 kils but of these 10 had to be returned as bad. In addition, the unseasonally cold weather meant that many of the beers were failing to condition properly and clear, and so were unsuitable for sale until towards the end of the festival.

We can do no more than apologise for this and promise that next year's event will be better.

Yours sincerely,

Andrew Padgham,

Chairman, South-East London Branch of CAMRA

Dear Editors,

A short note to keep you up to date with happenings at the Newt and Ferret, Kingston (see Kingston to Surbiton Crawl in the May issue of the Drinker) where "the quality of the beer cannot always be relied on." The pub has changed landlords since the article was written and is now back in the hands of Paul Malone who took it into the Good Beer Guide the last time it was included (1993, I think).

All the beer can now be relied on, a marked improvement on the last eight or nine months when a succession of landlords and ladies has done rather badly. If you have any doubts about the beer ask Paul; he'll also tell you why the Newt and Ferret isn't in the Good Beer Guide any more and offer you a Heffeweizen, and hopefully soon a Maibock, from Hofbrau of Munich.

The pub is only really noisy on quiz nights (Wednesday and Sunday) and if the weather is fine there is a big garden area (which includes the only petanque pitch in the area).

Yours sincerely,

Piers Todd, Teddington

Every Day is a Beer Festival at the

Some Ales since 1/6/95 - more to come!

<i>Millenium Gold</i>	<i>Rebellion Mutiny</i>
<i>Rebellion IPA</i>	<i>Red Admiral</i>
<i>Strong Anglican Special</i>	<i>Fullers Summer Ale</i>
<i>Adnams Bitter</i>	<i>Crouch Vale Duck</i>
<i>Woodham IPA</i>	<i>Kursaal Flyer</i>
<i>C. Wells Fargo</i>	<i>Breakspear Special</i>
<i>Oak Bonneville</i>	<i>Nene Valley Rawhide</i>
<i>Summer Lightning</i>	<i>Landlord</i>
<i>Nene Valley Trojan</i>	<i>Thomas Hardy Country</i>
<i>Old Hookey</i>	<i>Exmoor Gold</i>
<i>Arundel Gold</i>	<i>Dorothy Goodbody</i>
<i>Gales ASB</i>	<i>Marstons Pedigree</i>
<i>Bishops Finger</i>	<i>Morell's Varsity</i>

Proprietor : Bill

Manager : Natalie

Trinity Arms

Enjoy a wide selection of traditional cask ales in the quiet friendly atmosphere of a traditional London Independent Free House

Only Cask Ales - 8 Handpumps - 2 Fake Log Fires (!) - Ales change daily - Pool O'Hagan's Sausages - Beer Garden - Darts Tuesday Backgammon 7.30pm - Sunday Night Quiz 8.30pm - Sky Sport - Wednesday Jazz n' Blues 9pm - Thursday Swing & Mainstream 8.30pm

*Open all permitted hours
Nearest tube Borough*

29, Swan Street, Southwark
London, SE1 1DF
Tel: 0171 403 7931



HAPPY FACES AT THE WEST LONDON BRANCH 21ST BIRTHDAY CELEBRATIONS



Unfortunately this photo arrived just too late to get into last month's London Drinker but at least it gives another chance to recall an excellent evening. The founder members of West London Branch in the picture are (L to R): Jim Scanlon, Robert McGowan, Stan Tompkins, Del Allen, Roger Warhurst, Rodney Hollows, Graham Hamilton, Gary Williamson and Ivan Burgess (the man who gave the speech).

LONDON DRINKER is published by the London Branches of CAMRA, the Campaign for Real Ale Limited.

Editors: Chris Cobbold, 25 Valens House, Upper Tulse Hill, London SW2 2RX. Tel: 0181-674 0556; Andy Pirson, 13 Belvedere Close, Teddington Middlesex, TW11 0NT. Tel: 0181-943 5344; Ian Amy, 89 Woodfield Road, Thames Ditton, Surrey, KT7 0DS.

SUBSCRIPTIONS: £7.00 for 11 editions should be sent to: Stan Tompkins, 122 Manor Way, Uxbridge, Middlesex, UB8 2BH.

ADVERTISING: Barry Tillbrook. Tel: 0181-989 7523.

Please be sure to send all Diary material to Andy Pirson.

Printed by Ark Litho Ltd., Global House, 21a Lombard Road, London SW19 3TZ.



RICHMOND & HOUNSLOW NEWS

Richmond provides the emphasis for this month's branch news as surveys continue for the new South West London guide. Two former banks are at the centre of development plans for conversion to pubs. The old NatWest Bank on Hill Street is to become the All Bar One, reported to be a Bass outlet. Meanwhile Greene King have applied for permission to convert the former Lloyds bank, the subject of a previous application by Wetherspoons. Greene King were granted planning permission by Richmond Council for the change of use but the Licensing Magistrates turned down the licence application in April, subject to appeal at Kingston. Given that the brewery recently acquired the Cricketers, it has brought about a new meaning for Richmond Green(e).

Elsewhere up the hill the beer range has improved somewhat, though at a price. The Roebuck, a well established S&N house now offers Theakston Best Bitter, XB and Old Peculier. In Friars Stile Road the Marlborough has a wide range of real ales. These include Tetley Bitter, Tetley Imperial, Ind Coope Burton Ale, Eldridge Pope Best Bitter and Thomas Hardy Country Bitter and Marston Pedigree. All beers, without exception are served through a tight sparkler using swan neck dispense. This leaves the EP beers with a creamy bitter flavoured head and not much else. Beware of short measures, though to be fair the staff will happily top up a pint. After all it's a pint you've paid for and prices here are quite high. Round the corner at the Hole in the Wall, next to David Attenborough's house (Name dropper! - Ed.), you'll find good standard Courage Best Bitter and Directors. Finally, on offer at the Dukes Head in the Vineyard were Courage Best and Directors alongside Morland Old Speckled Hen at £2.00 a pint.

The Halfway House, Priests Bridge, East Sheen, SW13 now offers a wide selection of traditional beers. The manager, Michael Thompson has been there for ten years and during that time has increased the range from one to seven real ales. Regular beers are Whitbread Best Bitter; Flowers Original Bitter; Boddingtons Bitter and Brakspear Bitter on

handpump. In addition there are three beers served on gravity from firkins behind the bar. A little while ago these were Fullers London Pride, Fullers ESB and Whitbread VE Day Ale from Castle Eden. There were also guest beers on handpump for VE week which included Adnams Broadside and King & Barnes Festive in addition to Eden Bitter. The handpumped beers are all served traditionally; however, the gravity beers all use cask breathers and are cooled using Filton cooling jackets. The pub itself has been refurbished and offers a good selection of food.

On the pub chain front, CCC Leisure have disposed of the following pubs: Jolly Gardeners, Isleworth; Hand & Flower, Ham; Nelson, Twickenham. They have now taken the lease at the Jolly Gardeners, Hampton Hill. Finally, also in Hampton Hill the Duke of Wellington, having been closed for many years, has been converted into houses. Cheers!

Doug Scott

TRINITY ARMS NOW A FREE HOUSE

The ale is flowing freely again at the Trinity Arms in Swan Street, SE1. Former manager Bill Brown has bought the pub from Kingwood Taverns and it is now totally free of tie.

"The policy of 'Always an Ale from Crouch Vale' will continue", said Bill, who also joined CAMRA recently. "We will also be stocking a more varied range of beers than in recent times, especially from the smaller micro-breweries, with at least 5 different real ales available at any time."

In recent months the range has tended to favour beers from the Allied stable but a recent visit saw the following available; Rebellion IPA, Crouch Vale Millennium Gold, Nene Valley Rawhide, Taylors Landlord, Hopback Summer Lightning, Hook Norton Old Hooky and CH Pitchford, with Arundel Gold ready for sale.

The pub will continue to be a regular music venue, with regular jazz sessions. Further details of the beers on sale, and music etc, can be obtained by ringing the pub on 0171 403 7931.

BARKING AND DAGENHAM

THE BARKING DOG

61 Station Parade, Barking;

THE LORD DENMAN

270-272 Heathway, Dagenham

BARNET

THE MOON UNDER WATER

148 High Street, Barnet;

THE WHITE LION OF MORTIMER

1 York Parade, West Hendon Broadway, NW9

THE RAILWAY BELL

13 East Barnet Road, New Barnet;

***THE MOON UNDER WATER**

10 Varley Parade, Colindale NW9

***THE TALLY HO**

749 High Road, North Finchley, N12

THE BLACKING BOTTLE

122-126 High Street, Edgware

BEXLEY

THE WRONG 'UN

234-236 The Broadway, Bexleyheath;

BRENT

11 MOON'S

553 Kingsbury Road, Kingsbury NW9

THE OUTSIDE INN

312-314 Neasden Lane, Neasden NW10

11 MOON'S

197 High Road, Wembley;

THE COLISEUM

Manor Park Road, Harlesden, NW10

BROMLEY

THE MOON AND STARS

164-166 High Street, Penge, SE20

THE HARVEST MOON

141-143 High Street, Orpington

CAMDEN

*****THE MAN IN THE MOON**

40-42 Chalk Farm Road, Camden NW1

THE BEATEN DOCKET

50-56 Cricklewood Broadway, Cricklewood NW2

***THE THREE HORSESHOES**

28 Heath Street, Hampstead NW3

CROYDON

THE GEORGE

17-21 George Street, Croydon

THE MOON UNDER WATER

1327 London Road, Norbury SW16

THE FOXLEY HATCH

8-9 Russell Hill Road, Purley

EALING

THE RED LION AND PINEAPPLE

281 High Street, Acton, W3

ENFIELD

THE MOON UNDER WATER

115-117 Chase Side, Enfield;

THE WHOLE HOG

430-434 Green Lanes, Palmers Green N13

THE HALF MOON

749 Green Lanes, Winchmore Hill N21

**NOW**

- The Moon on the Square, Unit 30, The Centre, Feltham
- The Moon Under Water, 53-55 Lichfield Street, Wolverhampton
- Wetherspoons, 51-57 Chertsey Road, Woking
- The Lord Moon of the Mall, 16-18 Whitehall, London SW1

OPENING

- The Commercial Rooms, Corn Street, Bristol
- The Standing Order, 28-32 Iron Gate, Derby
- The Moon Under Water, 68-74 Deansgate, Manchester
- 6-12 Gladstone Road, Wimbledon
- 201 Midsummer Boulevard, Bouverie Square, Milton Keynes

* Pubs marked with an asterisk have a licence to open between 12 noon and 7pm on Sundays and Bank Holidays
*** Under a special licence, drinks can be sold on public holidays

THE BANKER'S DRAFT

36-38 Friern Barnet Road, New Southgate N11

THE LAMB

52-54 Church Street, Edmonton N9

EPPING FOREST

THE LAST POST

227 High Road, Loughton;

GREENWICH

THE BANKER'S DRAFT

80 High Street, Eltham SE9

HACKNEY

THE ROCHESTER CASTLE

145 High Street, Stoke Newington N16

HAMMERSMITH

THE MOON ON THE GREEN

172-174 Uxbridge Road, Shepherd's Bush W12

HARINGEY

THE OLD SUFFOLK PUNCH

10-12 Grand Parade, Green Lanes, Haringey N4

THE NEW MOON

413 Lordship Lane, Tottenham N17

THE ELBOW ROOM

503-505 High Road, Tottenham N17

THE TOLL GATE

26-30 Turnpike Lane, Honsay N8

THE ELBOW ROOM

22 Topsfield Parade, Tottenham Lane, Crouch End N8

***THE GATE HOUSE**

1 North Hill, Highgate, N6

HARROW

11 MOON'S

1 Shalfesbury Parade, Shalfesbury Circle, South Harrow

THE MOON ON THE HILL

373-375 Station Road, Harrow

THE NEW MOON

25-26 Kenton Park Parade, Kenton Road, Harrow

THE MOON AND SIXPENCE

250 Uxbridge Road, Pinner

THE SARSEN STONE

32 High Street, Wealdstone

11 MOON'S

20 The Broadwalk, Pinner Road, North Harrow

THE VILLAGE INN

402-408 Rayners Lane, Pinner

THE MAN IN THE MOON

1 Buckingham Parade, Stanmore

HAVERING

11 MOON'S

Unit 3, 46-62 High Street, Hornchurch

THE MOON AND STARS

99-101 South Street, Romford

HILLINGDON

11 MOON'S

12 Victoria Road, Ruislip Manor

THE MOON UNDER WATER

10-11 Broadway Parade, Coldharbour Lane, Hayes

11 MOON'S

Terminal Four, (Airside), Heathrow Airport, Hounslow

WETHERSPOONS

Terminal Four, (Landside), Heathrow Airport, Hounslow

THE MOON AND SIXPENCE

1250-1256 Uxbridge Road, Hayes End

THE SYLVAN MOON

27 Green Lane, Northwood



OPEN

- The Berkeley, 15-19 Queens Road, Clifton, Bristol
- The Moon and Spoon, 86-88 High Street, Slough, Berkshire
- Wetherspoons, Aberconway Road, Morden, Surrey
- Wetherspoons, 552-556 London Road, North Cheam

SOON

- Wetherspoons, 49 Piccadilly, Manchester
- Charlotte Row, Liverpool
- 78-92 Foregate Street, Chester
- 93-97 Lord Street, Southport

allow children in between these hours only. ** Children are not permitted at this pub.
ordered all day Sunday without food.

THE GOOD YARN

132 High Street, Uxbridge

HOUNSLOW

THE MOON UNDER WATER

84-86 Staines Road, Hounslow

JJ MOON'S

80-82 Chiswick High Road, Chiswick W4

ISLINGTON

THE DOG

17-19 Archway Road, Archway N19

*179 UPPER STREET

179 Upper Street, Islington N1

THE WHITE LION OF MORTIMER

125-127 Stroud Green Road, Stroud Green N4

THE MASQUE HAUNT

168-172 Old Street, EC2

LAMBETH

THE CROWN AND SCEPTRE

2a Streatham Hill, SW2

THE BEEHIVE

407-409 Brixton Road, Brixton SW9

LEWISHAM

*THE TIGER'S HEAD

350 Bromley Road, Catford SE6

THE BIRD IN HAND

35 Dartmouth Road, Forest Hill SE23

CITY OF LONDON

THE HAMILTON HALL

Liverpool Street Station EC2

MERTON

THE WHITE LION OF MORTIMER

223 London Road, Mitcham

NEWHAM

THE MILLER'S WELLS

419-421 Barking Road, East Ham, E6

THE GOLDENGROVE

146-148 The Grove, Stratford E15

REDBRIDGE

THE NEW FAIRLOP OAK

Fencepiece Road, Barking

THE GEORGE

High Street, Wanstead E11

THE GREAT SPOON OF ILFORD

114-116 Cranbrook Road, Ilford

RICHMOND UPON THAMES

THE MOON UNDER WATER

53-57 London Road, Twickenham

SOUTHWARK

THE FOX ON THE HILL

149 Denmark Hill, SE5

SUTTON

THE WHISPERING MOON

25 Ross Parade, Woodcote Road, Wallington.

THE MOON ON THE HILL

5-9 Hill Road, Sutton

TOWER HAMLETS

THE CAMDEN'S HEAD

456 Bethnal Green Road, Bethnal Green E2

WALTHAM FOREST

THE DRUM

557-559 Lea Bridge Road, Walthamstow E10

WANDSWORTH

JJ MOON'S

56a High Street, Tooting SW17

THE MOON UNDER WATER

194 Balham High Road, Balham SW12

THE SPOTTED DOG

72 Garratt Lane, Arndale Centre, Wandsworth SW18

THE RAILWAY

202 Upper Richmond Road, Putney, SW15

THE GRID INN

22 Replingham Road, Southfields, SW18

WESTMINSTER

THE MOON UNDER WATER

28 Leicester Square, WC2

WETHERSPOONS

Victoria Station, SW1

THE MOON AND SIXPENCE

185 Wardour Street, W1

BERKSHIRE

* THE OLD MANOR

Church Road, Bracknell

THE MONKS' RETREAT

163 Friar Street, Reading

BIRMINGHAM

THE SQUARE PEG

Unit1, 2 & 3 Temple Court, 115 Corporation Street

BUCKINGHAMSHIRE

THE LAST POST

77 The Broadway, Chesham

THE FALCON

9 Cornmarket, High Wycombe

DORSET

* THE MOON IN THE SQUARE

4-8 Exeter Road, The Square, Bournemouth.

ESSEX

THE ELMS

London Road, Leigh-on-Sea

THE LAST POST

Weston Road, Southend-on-sea

THE PLAYHOUSE

4 St. John's Street, Colchester

HEREFORD AND WORCESTER

THE GOLDEN CROSS HOTEL

20 High Street, Bromsgrove

HERTFORDSHIRE

THE HART AND SPOOL

148 Shenley Road, Borehamwood

THE MOON UNDER WATER

44, High Street, Watford

KENT

THE PAPER MOON

55 High Street, Dartford

THE SOVEREIGN OF THE SEAS

109-111 Queensway, Petts Wood

NORFOLK

THE BELL HOTEL

5 Orford Hill, Norwich

SURREY

THE REGENT

19 Church Street, Walton-on-Thames

SUSSEX

THE RED LION

North Terminal, International Departures Lounge,
Gatwick Airport

LONDON PRIDE

You've drunk the beer, you've worn the Tee-shirt, now read the book!

Sorry, I couldn't resist it; this is supposed to be a serious review of the history of Fullers which has been brought out as part of the celebrations to mark the sesquicentenary (150th anniversary to you) of Fuller Smith and Turner being celebrated this year.

In case you are confused about the first sentence "London Pride" is the title of the book; it is written by Andrew Langley and published by Good Books (GB Publications Ltd) on behalf of the brewery. There is a foreword from brewery chairman, Anthony Fuller in which he also acknowledges the work done by the late Gillian Morris and her mother Doris Yarde on whose research the book is based.

This is a fairly slim volume at 64 pages but is a nicely produced hardback on glossy paper with good pictures. Being this slim, it does not go too deeply into all of the machinations of the various generations of the three families but it gives an interesting and concise insight into anyone who would like to know a bit about how the brewery was founded and how it developed. The slimness of the volume does not mean that it glosses over some of the less upright characters in the company's history; they are there as well.

To my mind the book is about the right length; it told me as much as I (as one with a casual interest) really wanted to know in an informative style which I read in a couple of lunchtimes at work. From my point of view, it also gives due acknowledgement to the role of the Campaign for Real Ale in saving Fullers from going 100% keg in the 1970's.

The endpapers of the book are decorated with the family trees of the Fuller, Smith and Turner families and I am afraid I found a small error here. The Fuller family tree indicates that John Bird Fuller and his father John Fuller (the first Fuller to brew at Chiswick) both died in 1839. In fact the son died in 1872 as page 27 tells us. Still it proves that I did read the book, doesn't it.

All in all this is a well produced and interesting book but I do think it is a little expensive at £6.99. Still, I don't really think that it was published for reaching a mass market - I suspect that it was intended to be given away to valued customers and friends of the brewery. I must admit that my copy was sent to me for review purposes by a nice lady in the publicity department. Thanks very much; I liked the book and it will look nice on my bookshelves. Thanks also for the opportunity to use the word sesquicentenary in an article.

Andy Pirson

APPLICATION TO JOIN CAMRA

I/We wish to become members of the Campaign for Real Ale Limited and agree to abide by the Memorandum and Articles of Association of the Campaign.

Name(s)

Address

.....Postcode

SignatureDate

I/We enclose the remittance for individual/joint membership:

	Individual Annual	Joint Annual	Individual Life	Joint Life
UK and EEC	£12 <input type="checkbox"/>	£14 <input type="checkbox"/>	£120 <input type="checkbox"/>	£140 <input type="checkbox"/>
Rest of the World	£16 <input type="checkbox"/>	£18 <input type="checkbox"/>	£160 <input type="checkbox"/>	£180 <input type="checkbox"/>
Student/Unwaged	£6 <input type="checkbox"/>	£7 <input type="checkbox"/>		
Disabled	£6 <input type="checkbox"/>	£7 <input type="checkbox"/>	£60 <input type="checkbox"/>	£70 <input type="checkbox"/>
Retired	£6 <input type="checkbox"/>	£7 <input type="checkbox"/>	£60 <input type="checkbox"/>	£70 <input type="checkbox"/>

Send your remittance (payable to CAMRA Ltd) to:

Membership Secretary, CAMRA Ltd, 230 Hatfield Road, St Albans, Herts AL1 4LW



CAMRA PUB PRICES SURVEY 1995

The results of CAMRA's biggest every pub prices survey were released recently.

The key findings were:

beer prices have risen by 5.4% – twice the rate of inflation (4.8% after the Chancellor's duty increase last November)

'Premium pricing' of real ales compared to keg beers. Real Ale is now more expensive than keg. Only five years ago the reverse was true.

New 'nitro-keg' beers like Caffreys and Kilkenny cost more than other keg beers and real ale.

Drinking beer in a pub owned by an independent brewer will cost you less than in a pub owned by a national brewer.

More and more pubs and running price promotions as they struggle to compete for customers' money.

National beer price rises

Both real ale and lager prices have increased by far more than the rate of inflation.

Inflation 2.8%

Real Ale 5.4% (4.8%)

Lager 6.1% (5.5%)

CAMRA spokesman Mike Benner said "Beer drinkers are still paying grossly inflated prices for their pints". He added, "Comparing increases in beer prices with inflation over the last five years reveals that on average prices have risen by about twice the rate of inflation of that period".

The survey was carried out before recent increases in wholesale prices introduced by the brewers. Individual beers (Boddingtons) have seen rises as high as 7%.

The North West was the cheapest and the South East, rather than London, the most expensive. "It's possible that prices in the capital are becoming cheaper as the popularity of discount pubs like those run by Wetherspoons grows", claimed Mike Benner.

The cheapest pint (85p) was Ross brewery's 'Casnewydd' found in Newport. The most expensive was Marston's Owd Roger (£2.45) found in Buckinghamshire.

New "nitro-keg"* beers like Caffreys and Kilkenny cost 30p more than a standard keg beer (£1.79) compared with £1.49 and 10p more than a real ale of comparable alcoholic strength (£1.70). "These keg products are being promoted as premium products by the brewers – with prices to match. A comparable real ale costs less and does not have to be served so cold that any taste is killed off".

"As real ale has become more popular brewers appear to have introduced premium pricing", Mike Benner said, "Five years ago keg beer cost more than real ale – this situation has now reversed as drinkers' tastes have turned back to real ale".

Drinking beer in a pub owned by an independent brewer is likely to cost you less, the survey reveals. A pint is 3p cheaper than the equivalent in a nationally owned pub.

The number of pubs running regular price promotions (18%) has almost doubled since last year as publicans battle for their share of the market faced with declining pub use and threats from increasing levels of cross-border imports of alcohol.

* Nitrogenated beers that are pasteurised and filtered – similar to so-called 'draught-in-can' products, but available on draught in the pub.

A FINAL WORD ON VE DAY....

For which we are grateful to the June edition of Ale Talk, the magazine of the Kirklees Branch of CAMRA, from which we have pinched it.

Did you try any of the VE Day special beers? Every other brewery seemed to produce a Victory Ale, Victory Bitter or V for Victory Brew or a 1945 Bitter or a 1945 Strong Ale. Well, a more imaginative name came from Larkins Brewery in Kent who produced a Hände Hoch Bitte. But Ale Talk's prize for best VE Day beer name goes to the Blewitt Brewery in Kingsbridge Devon, who specially brewed: Hitler Blewitt.



The Malthouse


A Real Ale Heaven

Over 250 Traditional Beers this year (So Far !)



This Month CAMRA special.

**Monday Nights 20% off all the
Real Ales to card carrying members.**



Home Cooked Lunches



Regular Party Nights and Events



Children Welcome at Weekends



The Malthouse

7 Stanmore Hill

Stanmore

Tel - 0181-420-7265

COULDN'T ORGANISE A

Yes, we've all heard the expression that somebody couldn't organise a piss up in a brewery, haven't we. Well a few weeks ago, on Saturday 17th June to be precise, the Richmond & Hounslow Branch of CAMRA had a coach trip to the Hop Back Brewery at Downton, just down the road from where John Gilbert first set it up at the Wyndham Arms in Salisbury.

All the arrangements had been made and the coach picked us up at the appointed hour in Twickenham. Unfortunately our Social Secretary Brian Kirton, who had been unwell during the preceding week had to cry off when he did not improve as much as he had hoped he would. Anyway, the trip got under way and we arrived outside the brewery a few minutes early for the appointed 11.00am start, in the rain, to find not much in the way of signs of life.

One of our party had a mobile phone with him but it was outside its normal area of operation so he did not know if it would work. Fortunately it did and so a call was made at about 11.20 to the Wyndham Arms where John Gilbert's peaceful Saturday morning was disturbed. At about this time the accountant Greg Fitcher arrived; Chairman Doug Scott recognised him as he had helped to get him merry at the Head of Steam (followed by the

Sultan) a few weeks earlier. He took one look at the coach and realised what had happened, the brewer Rik Lyell had arranged the trip and confirmed it back to Brian but then, it seems, had forgotten about it.

Anyway, we were now inside the building but only the office, not the brewery itself as Greg had not brought a key to that part. But never mind; John turned up shortly afterwards and gave us an interesting (and of course, very informed) talk through the brewing process as they do it at Hop Back and the variations from "normal" practice with bigger plants.

There was no beer laid on at the brewery but after a great lunchtime session at the highly recommended Cuckoo at Hamptworth, we adjourned to the Wyndham where we were treated most royally. (Do you think that carving over the door looks like Chris Cobbold?)

The journey back was broken by an impromptu diversion to the Clatford Arms, another recommended pub at Goodworth Clatford - a good idea as it transpired as the appointed stop, the Windmill on the A30 at Windlesham was pretty packed and not very comfortable.

We never did see Rik Lyell though.....

P. Sartist

BUYING ABROAD

Britain is in danger of becoming of nation of *biere* drinkers, according to a report published recently.

A survey from the South Eastern Brewers and Licensed Retailers' Association shows that 203,000 drinkers in Surrey, Kent, Sussex and Hampshire have turned their backs on their local pubs in the past two years in favour of cheap beer and other drinks from cross the Channel.

More than one in five regular pub-goers say they are going to the pub less than they did two years ago and are now drinking beer from France, where excise duty is a seventh of what it is in Britain.

The survey, carried out by Market Research Solutions Limited, shows that the trend towards obtaining beer from France is particularly strong among frequent pub-goers aged between 20 and 34.

David Phillips, secretary of the South Eastern Brewers and Licensed Retailers' Association,

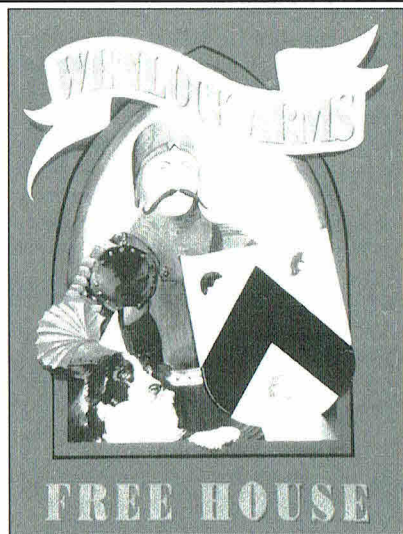
said; "We can identify a new generation of drinkers who now prefer to drink French *biere* at home rather than go to the pub.

"The Government must act quickly to bring the level of duty on beer down to what it is in France, so that British drinkers can afford to drink British beer.

"Otherwise, thousands of our local pubs and even some breweries will have to close down, with a devastating loss of choice, a huge loss of jobs and a serious threat to a unique British way of life."

The survey, of 905 people in Portsmouth, Brighton, Guildford and Maidstone, identified 37 who go to the pub less than they did two years ago - 21 per cent of them now get their alcoholic drinks from France or from friends or colleagues who have been there.

This trend is markedly higher among frequent pub-goers aged between 20 and 34 - 29 per cent of whom have cut down on visits to the pub and now buy cheap beer from France.



A genuine Free House featuring a selection of the very best in Cask Ales, Traditional Cider and Perry

- Mild always available
- Lined glasses guarantee full pints
- Salt Beef Sandwiches
- Function room free to CAMRA members
- Jazz piano Sunday lunchtimes
- Jazz every 3rd Saturday evening in the month
- Open all permitted hours

CAMRA
NORTH LONDON
PUB OF THE YEAR
1995

26 Wenlock Road
London N1

0171 608 3406

Nearest Tube stations are Old Street (exit 1) and Angel. Wenlock Road is off City Road via Windsor Terrace

MORE 1930'S PUBS THREATENED

Yet more 1930's built pubs are under the threat of demolition, this time in south-east London.

The Yorkshire Grey in Eltham, SE9 is prominently positioned on the South Circular and is a classic road house externally with a large car parking area to the rear. The owners, Taylor Walker, have applied to demolish the building to make way for a drive-thru McDonalds. This is being vigorously opposed by local residents as it is the only pub in an otherwise dry area.

The second pub is the Downham Tavern which faces being turned into a supermarket and car park. The plans, by owners Intreprenuer, will almost certainly see the loss of a disused hall at the rear of the building, along with the pub itself. It is currently listed in the Guinness Book of Records as the biggest pub in the country. It has two 45 foot bars and can hold up to 1,000 customers. Locals have sent details of the pub to English heritage in the hope of having it granted listed building status.

South-East London CAMRA Branch Pubs Officer, Eric Martin said, "Both of these pubs have had a chequered history but they are very important both architecturally and to the communities they serve. We will be supporting both sets of objectors to try and ensure that these pubs are retained in their present form."

A DICKY IN YOUR BOTTLE..."

(East London & City News)

A new outlet for "London Drinker in the East End is THE IMPERIAL CROWN, 50 St. Leonards Street, E3 – a short walk from Bromely-by-Bow District Line Station and more or less opposite the Tesco superstore.

The guv'nor is Martin Keegan, formerly at The Grove Tavern, Wimbledon, who is a member of the Guild of Master Cellarman.

Needless to say Burton Ale is on offer, as are Tetley bitter and Ruddles County, not to mention a sizeable selection of whiskies – many of them single malts.

Definitely a pub worth visiting. "East Ender"

360 METRIC TONS OF MUSSELS LATER...

Belgo, the Chalk Farm restaurant renowned for popularising Belgian beer and moules et frites in London, extended its concept with the new Belgo Centraal, which opened at the end of April in the heart of London's Covent Garden.

The first Belgo restaurant opened in April 1992 and within weeks was too small to meet demand so an extension was built, doubling the seating capacity. Naturally, the need for expansion is a welcome problem for a restaurateur and two-thousand-and-one estate agents' prospectuses later, a less temporary solution presented itself: a 19th century brewery warehouse in the middle of Covent Garden, with capacity for four hundred seats. The Seven Dials Warehouse between Earlham and Shelton Streets, which used to house Smith's restaurant, is part of Covent Garden's unspoiled Seven Dials conservation area.

In order to differentiate between the two restaurants, Belgo in Chalk Farm has been renamed Belgo Noord while the Covent Garden eaterie will be Belgo Centraal. These titles reflect the names of two of Brussels' three train stations – leaving the platform open for a future Belgo Zuid. Additionally, Centraal has its own logo which celebrates a new addition to the menu; Belgian spit-roasted chicken.

Whereas Belgo Noord in Chalk Farm was inspired by the concept of a contemporary monastic refectory, Belgo Centraal will focus on transit. There will be two separate eating halls; one for people on the go (no bookings required, parties from one to ten, no coat check, fast service, long tables and banquettes booths). The second, like a continental station waiting room, will promote the stop-over rather than the rush hour with a more intimate setting. The entrance will be no exception to the transit concept, linking Shelton Street to Earlham Street by a bridge that crosses over the Belgo kitchens. An hydraulic platform will take diners a floor down to the traffic of food runners and rolling barrels.

Open seven days a week from 12 noon to 12 midnight, Belgo's large selection of a la carte and fixed price menus will ensure that they remain accessible to everyone. While

mussels will still be the main feature as well as lobster, asparagus and waterzooi, the Centraal menu includes diverse new sections:

- Poulet-roti (imported Belgian spit-roasted Malines/Mechelen chicken)
- Cuisine à la Biere (including rabbit cooked in Belle Vue cherry beer, grilled salmon in Hoegaarden white beer sauce and pork fillet with pear and apple glazed in a sweet Carolus beer sauce)
- Tartine (10 square inches of rye bread with typical Belgian toppings such as the amusingly titled raw beef and onion concoction 'toast cannibale' and the infamous radish, chopped chives and plattekees)
- Choucroute (including ginger smoked bacon, glazed pig knuckles, wild goose quenelle, smoked kasslet and fresh water fish)
- Herring (sil, maatjes, rollmops)
- Stoemp (the Belgian version of bubble & squeak which accompanies staples such as wild boar sausages, Bavette steak and boudin blanc & noir)
- Trappist Cheeses (made in Belgian beer brewing monasteries)

Having succeeded in introducing a continental beer drinking culture that complements simple wholesome food in London with Belgo Noord, the 12,000 square feet of Belgo Centraal will provide the sheer size that the concept has always deserved. The Belgian beer list is expanding from 50 to 100 varieties, including seven on tap, and the house beer is Belgium's famous wheat beer, Hoegaarden White. As in Chalk Farm, Belgo Centraal will feature a beer retail store on the Earlham Street side of the site which will also stock beer paraphernalia and tablier de brasseur (brewers' aprons) and habits as worn by Belgo staff.

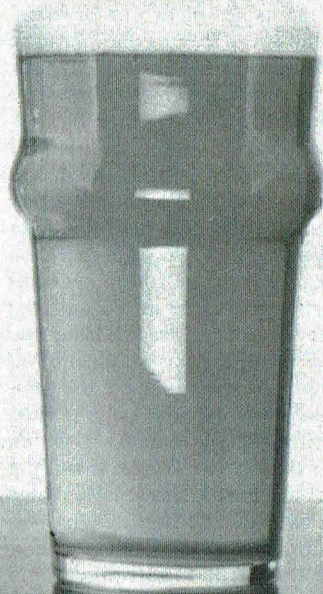
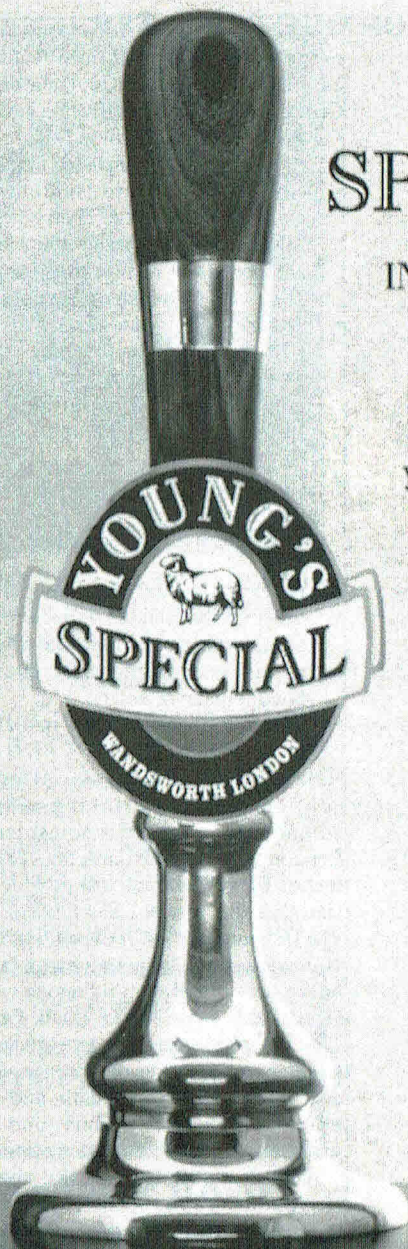
Work on the Belgo Centraal site began in November 1994. Ron Arad and Alison Brooks, recently featured on the cover of Blueprint Magazine for their work on the Tel-Aviv opera house and the Belgo Noord extension, were commissioned to design the restaurant. Known for this work as a furniture designer, Arad is rapidly

Continued on page 34

WE SPECIALISE

IN EVERY CORNER OF
THE COUNTRY

If your Landlord doesn't
yet stock this famous ale,
we can advise on supply
on the Young's helpline



Young & Co.'s Brewery
Telephone: 0181-870 0141

FROM OUR ARCHIVES

FIFTEEN YEARS AGO the pink front cover of the 20 page August 1980 London Drinker bore an illustration of the Dove, Hammersmith. It had a reference to the first part of a supplement to Real Beer in London, which showed additions and amendments to that publication for West, East and North London, and, being the centre spread, was also printed on pink paper as a pull-out supplement.

Courage were causing some consternation – the quality of their real ales was apparently deteriorating and bright beer and keg were being passed-off as the real thing. At about that time one of their pubs I used was dropped from the Good Beer Guide for serving bright beer via hand pumps. The landlord, on learning this, and knowing my connections, showed me the door in no uncertain terms – using language the like of which I have neither before nor after heard. He was right in one assumption – I had a little to do with the expulsion.

The Great British Beer Festival was again planned for the grounds of the Alexandra Palace, which had a year before been burned down just before the Festival when, as in this instance, it was held in marquees.

Len Murray looked at the history of Shepherd Neame of Faversham, founded in 1689, which then owned 15 pubs in London.

“Riverside West” was Richard & Di Kehoe’s account of the history of Hammersmith’s pubs (including the Dove, featured on the cover) and the beers available – 12 houses were featured.

There was a full-blown campaign to save the Tramshed, Woolwich, from demolition.

Simon’s Tower Bridge Brewery had stopped brewing, and was thought unlikely to restart in the near future.

TEN YEARS AGO our August 1985 issue used orange as the colour for 8 pages including both covers – the back had an advert for the Great British Beer Festival in the middle of August in Brighton, and boasting the world’s largest bar.

The front featured a photograph of Williamson’s Tavern, EC4, owned by Nicholson’s, who took the 4-page centre spread to advertise their London houses. A

caption beneath the photo referred the reader to an advert for the 11th Capital Beer Night, at the Horseshoe, Clerkenwell.

Tony Millns, then CAMRA Chairman, argued in a guest Editorial for all-day opening.

Conway Taverns were about to re-open the Crown & Anchor, Brixton (formerly a long-derelict Courage house), serving Courage Best & Directors, Combes Bitter and the then new Brixton Brewery Anchor Ale, o.g. 1050.

The Still, Peterborough, was described in “Holiday Pub Profile”. Also featured were the Upton Vale Inn, Torquay, and the Three Horseshoes, Brighton, Hants.

Our crossword compiler Dave Quinton’s portrait appeared in the centre of his grid, and that of Ted Higgins, one of CAMRA’s living legends, was elsewhere in the issue. The artist in both cases was Eileen Graves.

In “Liquid Lunch”, R M Rider visited five pubs near Ludgate Circus, most of them just off Fleet Street. Oddly, the map was drawn the wrong way up, with the south at the top, though the lettering was all the correct way round from the reader’s point of view.

Mostyn Lewis presented a list of pubs stocking Samuel Whitbread Ale, o.g. 1048, a total of 32 in the London area.

Mike Jacomb contributed a three-part crawl of Lewes, East Sussex, with the usual crop of odd historical facts from Merton. 14 pubs were involved.

FIVE YEARS AGO the blue heading of the 32 page August 1990 issue surmounted the proclamation “Fullers buys pubs from Allied”, referring to the fact that the first mentioned intended – in a deal not then finalised – to buy 44 pubs from Allied.

Andy, in his Editorial, reported the purchase of 98 pubs by Belhaven’s of Dunbar, formerly in the main Truman and Watney houses, via Brent Walker.

Eldridge Pope had replaced their IPA with Thomas Hardy Country Bitter, that year was the 150th anniversary of the writer’s birth.

Idle Moments had the usual crop of number/letter puzzles, brewery anagrams, and more of the previous month’s innovation, False Negatives.

Merton produced what turned out to be his

last Historicrawl, a service that had begun in September 1982.

The subject this time was Chichester, West Sussex. It covered 22 pubs and, counting the map and illustrations, 6 1/2 pages of print.

Cheers for now, more next month.

Martin Smith

BACK NUMBERS

To date 181 editions of London Drinker have been issued: back numbers of the following are available:
1979: March, April, May, June, August, September, December.

1980: February, March, April, May, July, August, September, October, November, December.

1981: February, April, May, July, August, September, November, December.

1982: March, April, May, July, August, September, October, November, December.

1983: February, April, June, July, August, September, October, November, December.

1984: All issues (May one copy only)

1985 to date: All issues.

Available from Stan Tompkins, 122 Manor Way, Uxbridge, Middlesex UB8 2BH at 50p per copy, post free

THE RICHMOND & HOUNSLOW
BRANCH
of
THE CAMPAIGN FOR REAL ALE
PROUDLY PRESENTS

THE FOURTH FELTHAM BEER FESTIVAL

AT
FELTHAM ASSEMBLY HALL
HOUNSLOW ROAD, FELTHAM
from

THURSDAY 29TH SEPTEMBER
to

SATURDAY 30TH SEPTEMBER

Opening Times:

Thursday 6.00pm to 10.30pm

Friday & Saturday 11.00am to 10.30pm

Admission £1.50 (£1.00 on Friday Lunchtime)

CAMRA members admitted free at all times
on production of valid membership cards

COOKING WITH BEER

By way of a change this month's recipe is not from CCC Leisure; it is culled (i.e. stolen) from the pages of the Summer 1995 edition of the Croydon Crawler, the newsletter of the Croydon & Sutton Branch of CAMRA, to whom we would like to offer our thanks. It is for CARBONNADES DE BOEUF and it goes like this:

INGREDIENTS

1 1/2 lbs Braising steak

Salt

Freshly ground black pepper

2oz Dripping or lard

3oz Streaky bacon

1 1/2 oz Plain flour

1/2 pint Ale, preferably dark

1/2 pint Stock

1 lb Onions, finely chopped

1 Clove garlic, finely chopped

Sugar

A bouquet garni

2 tablespoons wine vinegar

METHOD

Cut the meat into cubes and season well with salt and pepper. Melt the dripping or lard

into a large frying pan and when hot, brown the meat in it. Add the bacon, cut into cubes or small pieces and continue cooking for a few minutes. Remove the meat and bacon from the pan with a slotted spoon, leaving the juices behind. Stir the flour into the remaining fat and juices and brown gently over gentle heat, taking care not to burn the flour. Gradually add the ale and then the stock, stirring continuously (otherwise it will go very lumpy!) and allow to simmer. Fill a casserole with layers of the browned meat, bacon, chopped onion and garlic, adding a sprinkling of sugar. Pour the sauce over the meat and add the bouquet garni. Cover and cook very gently for 3 to 4 hours in a cool oven - gas mark 2, 300°F or 150°C. If it gets rather dry during cooking, add a little more ale. To serve, remove the bouquet garni and stir in the wine vinegar. Serve with plain boiled or mashed potatoes and a pint of good ale!

It is best to use a dark ale such as a strong brown ale or porter as this adds to the flavour of the sauce. Either draught or bottled ale can be used but it must be fresh.

BEER BRIEFING

LONDON BEER GUIDES UPDATE 105

This month we welcome two new Firkin pubs, a conversion in W11 Notting Hill and a brand new pub in W5 Ealing; a newish S&N pub in Surbiton and a new Wetherspoons outlet in SW1 Whitehall. Two more Scruffy Murphy conversions have occurred albeit one of which has retained its original name owing to local action. Various other 'silly namings and renamings' are recorded throughout London.

The numbers in brackets after each entry refer to the page number in the following guides: E - East London & City Beer Guide, 3rd edition; K - 'Real Ale Drinkers Guide to Kent Pubs', 8th edition; N - North London Beer Guide, 2nd edition; SE - South East London Pub Guide, 4th edition; 3SE - South East London Pub Guide, 3rd edition; SW - Real Beer in South West London; W - Real Beer in West London; X - Essex Beer Guide, 8th edition. U refers to earlier updates. # indicates a guest beer.

If you would like to report changes to pubs or beers please write to: Beer Guides Updates, 2 Sandtoft Road, London SE7 7LR.

NEW & REOPENED PUBS & PUBS CONVERTED TO REAL ALE

EAST

E9, PENSURST ARMS, 25 Penshurst Road. Brakspear: Bitter, Special Bitter. Guest beer. Real cider. Now a Free House, ex Taylor Walker. (E121)

SOUTH EAST

SE10, THAMES, 95 Thames Street. Reopened. No real ale. Now a Bridgers Free House, ex Whitbread. (SE102)

SOUTH WEST

SW1(SJ), LORD MOON OF THE MALL, 16/18 Whitehall. Courage: Directors Bitter. Marston: Pedigree. Theakston: Best Bitter, XB. Younger: Scotch Bitter. Guest beers at weekends. Weston: Great Western Revival Cider (4.8%). Latest Wetherspoon Free House created in former bank just off Trafalgar Square. High ceilings. Tastefully decorated with red flowery carpets, bookcases and polished wood bar. Large portrait of Lord Moon (Who he? - Ed) and local history panels relating to the Whitehall/Horseguards area cover the walls and pillars. No smoking/eating area at rear. Disabled WC. Open all permitted hours.

SW4, NORTH POLE, 29 North Street. Renamed **MISTRESS P'S**. Flowers: Original Bitter. Fuller: London Pride. Whitbread: Fuggles IPA. Friendly local. (SW24)

SURBITON, FERRET & TROUSER LEG, St Marks Hill (near Surbiton Station). Courage: Best Bitter. John Smith: Bitter. Theakston: Best Bitter, XB. Large new pub under office building opened in late 1993 about the time of the takeover of Chef & Brewer and now owned by S&N but not previously reported. Loud music and a young crowd contrast with the recently opened Fullers pub nearby.

SURBITON, SAUCY KETTLE, 7/9 Brighton

Road. No real ale. Free House in former shop premises. Music orientated

WEST

W5, PHOTOGRAPHER & FIRKIN, 25 High Street. Firkin: Full Mash Mild (3.4%), Lens Bitter (3.5%), Photographer Ale (4.3%), Dogbolter (5.6%). Weston: Old Rosie Cider. Latest Taylor Walker Firkin brew pub in part of former department store. Brewery can be viewed downstairs - on way to toilets! Usual decor with bare floorboards, pews and barrel tables. Items of breweriana and film memorabilia decorate the walls. The name reflects the proximity of the erstwhile Ealing Film Studios. Red phone box. Food. Live music Tues, Thurs & Sun evenings. Open all permitted hours. Note correct postal code and address and not as in publicity material.

W11, ELGIN, 96 Ladbroke Grove. Renamed **FROG & FIRKIN**. Firkin: Tadpole (3.5%), Frog (4.3%), Golden Glory (5.0%), Dogbolter (5.6%). Weston: Old Rosie Cider. Latest Taylor Walker 'Firkin' conversion reopened in early July but without a pub brewery. The attractive Victorian coloured glass screens and decorative tilework have thankfully been retained in situ and sensitively renovated. The normal Firkin decor of bare boards, pews and barrel tables has however been superimposed, together with a stage with piano and red phone box. Frog related pictures cover the walls. Food. Open all permitted hours. Generally a good effort despite the regrettable loss of the original name which still appears on the windows.

PUBS CLOSED OR CEASED SELLING REAL ALE

EAST

E9, LORD NAPIER. Free House (fizz), closed, future uncertain. (E121)

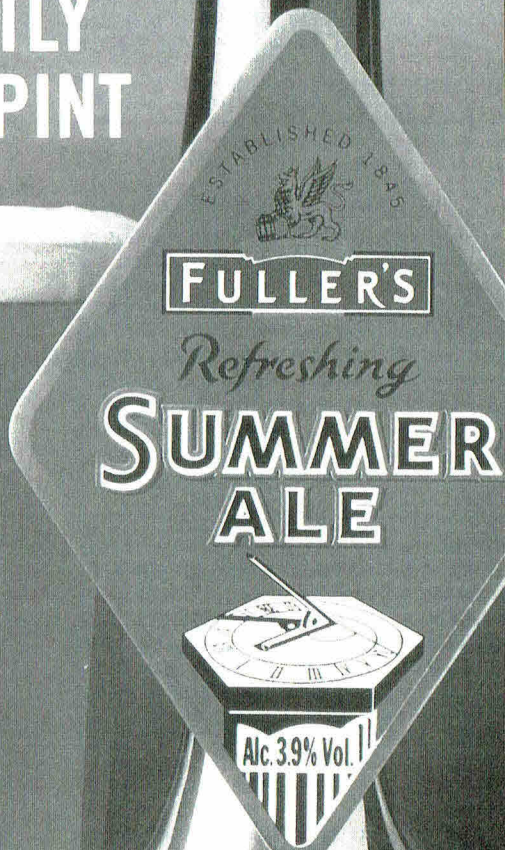
NORTH

N20, GRIFFIN. Now also displays SCRUFFY



AVAILABLE AT THE GBBF

THE PERFECTLY
REFRESHING PINT



BEER BRIEFING
LONDON BEER GUIDES UPDATE 105
continued

MURPHYS sign, albeit subsidiary to its proper name which has been retained following pressure from the Whetstone Society. Pseudo-Irish theme. H removed. (N105, U81)

SOUTH EAST

SE1, DUKE OF CLARENCE. Charrington, now demolished. (SE14)

SE1, HOP CELLARS. Free House, H unused. (SE21)

SE1, SHIPWRIGHTS ARMS. Former Courage pub, name still displayed but also carries **ANVIL** name and operates as a private club. (SE33)

SE6, BONNIES. Scottish & Newcastle, ex Grand Met (Watney), now demolished. (SE65, U105 below)

SE10, GEORGE & DRAGON. Taylor Walker, H unused. (SE94)

SE10, GUILDFORD ARMS. Charrington, H unused. (SE95)

SOUTH WEST

SW10, CHURCHILLS BAR. Taylor Walker, closed for sale, future uncertain. Formerly MUSWELLS, previously SWIFTS. (SW38, U43, U64, U74, U98)

SW10 GUTTER ARMS. Renamed **MURPHYS PHARMACY (SCRUFFY MURPHYS)**. H removed. The loss of yet another pub name of long standing local historical significance to the discredited pseudo-Irish theme imposed by Taylor Walker. (SW38, U51, U74)

RICHMOND, LASS OF RICHMOND HILL. Renamed **OLD ORLEANS**. H removed. Now a bar and restaurant and acquired from Grand Met by S&N. (SW72)

WEST

W6, OXFORD & CAMBRIDGE. Now a Free House, ex Charrington. H unused. (W76, U66)

OTHER CHANGES TO PUBS & BEER RANGES

CENTRAL

EC2, FLEETWOOD. +Adnams: Bitter. +Taylor: Landlord. (E31)

EC4, CANNON STREET CAFE BAR. Renamed **CAFE BAR**. (E47)

W1(F), CLEVELAND. -Blackthorn: Cider. The cider on sale is the fizz version. (W28, U74, U101)

EAST

E10, ALMA. Renamed **FOUR FINCHES**. -Charrington: IPA. +M&B: Brew XI. (E123)

E15, GOLDENGROVE. -Wadworth: 6X. +Marston: Pedigree. (U82)

E17, ESSEX BREWERY TAP. Renamed **WILD ROVER**. (E167)

GIDEA PARK, PLOUGH. -Ruddle: Best Bitter.

+Theakston: XB. +Webster: Yorkshire Bitter. (X49)

ILFORD, BELL. -Ruddle: Best Bitter, County. +Theakston: Best Bitter, XB. +2 Guest beers. Now a S&N 'Barras & Co' pub, ex Grand Met (Watney). (X63)

ILFORD, GENERAL HAVELOCK. -Eldridge Pope: Royal Oak. +Marston: Pedigree. Now a Taylor Walker 'Salmon & Hare' pub. Formerly HAVELOCKS. (X63, U103)

NORTH

N1, YORK TAVERN, Kings Cross Station. Renamed **COOPERS**. -Arkell: BBB. +Worthington: Best Bitter. +Guest beer (eg Arkell: Kingsdown). A refurbished Travellers Fare Free House. (N35, U52)

N11, TURRETS. Now renamed **KITES CAFE BAR AT THE TURRETS**. -Beers listed. +Ruddle: Best Bitter. (N80)

N18, PHOENIX. +Boddington: Mild. +Fuller: London Pride. (N100, U77)

N19, NEW BRUNSWICK. Renamed **PICKLED NEWT (NEW BRUNSWICK)**. -Webster: Yorkshire Bitter. +Bass. +Boddington: Bitter. +Webster: Green Label. (N102, U98)

ENFIELD, STAG. +Fuller: London Pride. +Hancock: HB. +Tetley: Bitter. (N189)

ENFIELD, SALISBURYS. Reverted to **SALISBURY** and now renamed **HUNGRY HORSE**. -Webster: Yorkshire Bitter. +Bass. +Boddington: Bitter. +Webster: Green Label. (N187, U98 corrections below)

SOUTH EAST

SE1, ANTIGALLICAN. -Beers listed. +Bass. +Courage: Directors Bitter. (SE9)

SE1, GLOBE TAVERN. +Hancock: HB. +Worthington: Best Bitter. (SE18, U102)

SE1, HORNIMANS. +Brakspear: Special Bitter. +Samuel Allsopp: Traditional Stout. +Wadworth: 6X. +Wells: Bombardier. Beers may vary. (SE21)

SE1, MUDLARK. Guest beers include Bateman: Valiant and Crouch Vale: SAS. (SE27)

SE1, OLD THAMESIDE INN. -Beers listed except Nicholson: Best Bitter. +Tetley: Bitter. +Usher: Best Bitter. (SE28)

SE1, PAPER MOON. -Hancock: HB. -M&B: Highgate Dark. +Courage: Best Bitter. (SE28)

SE1, PRINCE ALBERT. -Bass. -Marston: Pedigree. +Courage: Best Bitter. +Fuller: London Pride. (SE29)

SE1, SOUTHWARK TAVERN. Guest beers include Adnams: Bitter and Everard: Beacon. (SE34)

SE1, STAMFORD ARMS. +Courage: Directors Bitter. +Harvey: Best Bitter. +Morland: Old Speckled Hen. (SE35)

SOUTH WEST

SW3, QUEENS ARMS TAVERN. -Beers listed.

BEER BRIEFING
LONDON BEER GUIDES UPDATE 105
continued

+Wells: Eagle IPA, Bombardier, Fargo. Now a Charles Wells pub, ex S&N, formerly Grand Met (Watney). Regrettably it has retained the 'TAVERN' tag under the new regime. (SW23)

SW9, BEDFORD ARMS. -Flowers: Original Bitter. -Wethered: Bitter. +Marston: Pedigree. +Wadworth: 6X. +Whitbread: Pompey Royal. +Guest beers. +Scrumpy Jack: Old Hazy Cider. Note 'ALE HOUSE' is not part of title although the pub is part of the Hogshead Ale House chain. (SW36, U39, U57, U63)

SW9, BEEHIVE. -Flowers: Original Bitter. +Young: Special. (SW36, U49)

SW9, BREWERY TAP. -Webster: Yorkshire Bitter. +Courage: Best Bitter, Directors Bitter. Now an Ascot Estates Free House, ex Grand Met (Watney). (SW36)

SW9, LANDOR. -Ruddle: County. +Courage: Best Bitter, Directors Bitter. +John Smith: Bitter. +Guest beer, changed weekly. Opens 12 noon. Now operated by TW Guest Trust, ex Grand Met (Truman). (SW36, U39, U51)

SW9, PLOUGH. -Ruddle: Best Bitter. (SW36, U34, U39)

SW9, SWAN. -Webster: Yorkshire Bitter. +John Smith: Bitter. Closed 3-7pm Saturdays, opens to midnight or later Mon-Sat and after 3pm Sunday under restrictive conditions. Admission charge for evening music sessions. (SW37, U63)

SW14, HALFWAY HOUSE. -Flowers: Original Bitter. +Boddington: Bitter. (SW44, U50)

SW14, MARKET GARDENER. Renamed **MAGGOT & MAYBE.** -Beers listed except Webster: Yorkshire Bitter. Old name still displayed in stonework at top of building. (SW45, U50)

SW14, VICTORIA. -Young: Special. +Courage: Best Bitter. (SW45, U50, U73)

SW15, ARAB BOY. Now **ARAB BOY TAVERN.** (SW46, U73, U98)

HAM & PETERSHAM, DYSARTS. -Young: Special. +Marston: Pedigree. +Morland: Old Speckled Hen. Now a Corporate Catering Free House, ex Courage. (SW63, U57)

KINGSTON, FIGHTING COCKS. +Guest beers from small & independent brewers. Now a Corporate catering Free House. (SW65, U68, U92)

KINGSTON, NEWT & FERRET. -Beers listed. +Hall & Woodhouse: Badger Best Bitter, Tanglefoot. +Gribble: Reg's Tipple, Black Adder II. Now owned by Hall & Woodhouse although still operated as a 'Free House'. (SW66, U32)

RICHMOND, DUKES HEAD. -John Smith: Bitter. +Marston: Pedigree. (SW71)

RICHMOND, HOLE IN THE WALL. +Marston: Pedigree. (SW71)

RICHMOND, HOPE OF RICHMOND. Renamed **MOLLY MALONES.** -Ruddle: County. -Watney: Coombes Bitter. +Courage: Best Bitter. (SW72)

RICHMOND, MARLBOROUGH. -Beers listed. +Eldridge Pope: Best Bitter, Thomas Hardy Country Bitter. +Marston: Pedigree. +Tetley: Bitter. +Guest beer. (SW72)

SUTTON, OLD NICKS. Renamed **ACADEMY.** -Beers listed. +Boddington: Bitter. +Brakspear: Bitter. +House beer (probably Hancock: HB). +Guest beer. Reopened after refurbishment. (U94)

WEST

W5, DUFFYS, 122-124 Pitshanger Lane. -Wadworth: 6X. +Fuller: London Pride. +Gales: HSB. +House beer (probably Hancock: HB). Refurbished after expanding into next door premises. Note new address. (W72, U59, U93)

W8, HENRY J BEANS. Reverted (almost) to original name **ABINGDON.** Still a cafe bar/restaurant and no real ale. (W82)

W11, FROG & FIRKIN, 41 Tavistock Crescent. Renamed **FUDRUCKERS.** Eldridge Pope: Hardy Country Bitter. Fudruckers: Elmers Ale (house beer - origin unknown). Greene King: IPA. Now an independent Free House, ex Taylor Walker (Firkin). Brewery now removed. This was the third David Bruce Firkin pub. Now has Country & Western theme. Beware keg Addlestone Cider on handpump (W88)

GREENFORD, NUFFIELD ARMS. Renamed **LIGHTNING.** -John Smith: Bitter. -Guest beers. +Wadworth: 6X. (W102, U92)

HESTON, OLD QUEENS HEAD TAVERN. Subsidiary name **HUNGRY HORSE** now displayed. -Beers listed. +Bass. +Boddington: Bitter. +Brakspear: Bitter. +Courage: Best Bitter. Note TAVERN in title. (W120, U98)

HOUNSLOW, SHIRE HORSE. -Beers listed. +Ind Coope: Burton Ale. +Tetley: Bitter. Now an Ascot Estates Free House, formerly Belhaven. (W128, U45, U67, U71, U89)

CORRECTIONS TO UPDATE 79

NEW & REOPENED PUBS & PUBS CONVERTED TO REAL ALE

N14, BANKERS DRAFT. Should read **N11**

CORRECTIONS TO UPDATE 98

PUBS ACQUIRED BY LABATTS & MAGIC PUB CO

NORTH

ENFIELD, SALISBURYS. Magic (Watney). Reverted to **SALISBURY** and then renamed **HUNGRY HORSE.** Omitted in error; total of Magic pubs in introductory paragraph should be increased by one.

BEER BRIEFING
LONDON BEER GUIDES UPDATE 105
continued

SOUTH WEST

NEW MALDEN, MALDEN MANOR. Labatts (Courage). Subsequently renamed **MALDEN (THE)**. (SW70, U103). Omitted in error; total of Labatts pubs in introductory paragraph should be increased by one.

CORRECTIONS TO UPDATE 102

S.E. LONDON PUB GUIDE (4TH EDITION)

SE1, BRIDGE HOUSE (YE OLDE), 218 Tower Bridge Road. This is correct title although pub sign drops the 'E'.

SE1, WELLINGTON TAVERN. Should be listed after VALENTINES.

SE1, WHEATSHEAF. Only closed Sundays for a short period now open during all permitted hours.

SE5, BREWERS. Address is 54b Southampton Way.

SE6, BLACK HORSE & HARROW. Ref should read (SE65).

SE20, GALLERY. Add: No real ale.

CORRECTIONS TO UPDATE 103

OTHER CHANGES TO PUBS & BEER RANGES

SW6, WHITE HORSE. Freedom: Amber Malt should read Freedom: Fulham Golden Ale (see U104)

NEW MALDEN, MALDEN MANOR. Should read ex Grand Met (Watney) via S&N.

HILLINGDON, HEATH TAVERN. -Ruddle: County should read -Ruddle: Best Bitter.

CORRECTIONS TO UPDATE 104

OTHER CHANGES TO PUBS & BEER RANGES

NW8, CROWN. Should read Now also displays ... etc.

TOLLY COBBOLD

Boat Trips from the Tolly Cobbold Brewery at Ipswich to Felixstowe and back were launched last month – yet another tourist attraction on offer this Summer to visitors and residents of Suffolk.

At least 12 cruises have been arranged for July, August and September, and if they prove to be popular they could become a regular feature.

The Brewery Tap at Tolly Cobbold, is acting as both the booking office (Tel: -1473 281508) and reception centre, from which a bus will take customers to the New Cut to board the M/S BRIGHTLINGSEA. The owner and skipper of the boat, Alan Pridmore, provides an interesting commentary and as well as the familiar

views of The Orwell Bridge, Pin Mill and Shotley, there's a fascinating look at the Felixstowe container terminal in action.

The 2 hour cruises are very reasonably priced at £4.50 (adults) and £3.50 (children), including the bus connection, and there's even a bar and snacks available on board.

Although advance bookings are advised, they are not necessary and a special deal of a brewery tour and boat trip is available from the Head Guide at Tolly Cobbold, Amanda Grimsey.

Last Check-in

<u>Dates</u>	<u>Time at BREWERY TAP</u>
Sat 29th July	1.45pm
Sun 6th Aug	6.15pm
Sun 13th Aug	2.15pm
Fri 18th Aug	2.45pm
Mon 28th Aug	2.15pm
Sat 2nd Sept	2.45pm

Advance booking advised,
but not necessary.

Views expressed in this publication are those of their individual authors and are not necessarily endorsed by the Editorial team or the Campaign for Real Ale Limited

Lytton Arms

Old Knebworth, Herts

- ★ UP TO 15 ALES AVAILABLE EVERY SESSION
- ★ OVER 1250 REAL ALES IN SEVEN YEARS
- ★ 100 BOTTLED BRITISH & CONTINENTAL BEERS
- ★ 50 MALT WHISKIES
- ★ REGULAR MINI BEER FESTIVALS
- ★ O'HAGAN'S SAUSAGES & VARIETY OF CHEESES
- ★ 25 MINUTES WALK FROM KNEBWORTH BR STATION
- ★ SCRUFFY LANDLORD & 3 LEGGED CAT
- ★ For more info 01438 812312

Letters to the Editors

(continued from page 34)

Dear Editors

I read with dismay your story that Sam Smith's plan to withdraw cask beer from the most of their London pubs and replace it with nitro-keg Sovereign. If a large independent brewer can do this than the multinational beer companies will not be far behind. As such it would seem to represent the most significant reversal for CAMRA in London since the beginning of our advance which, arguably, can be dated to the introduction of Burton Ale in the mid 1970s.

Advertise in next month's

LONDON DRINKER

*and get your message direct to the brewers,
pub owners, licensees, festival organisers, pub
regulars and drinkers of London and beyond*

For more information, call now

BARRY TILLBROOK

0181 989 7523

With the GBBF coming up what better chance to raise Sam Smith's decision as a campaigning issue and organise protest outside of some of their central London pubs together with consideration of a boycott if they continue with their plans?

Yours sincerely

Keith Flett

London N17

continued from page 25

establishing himself as an architectural luminary. Fixtures and furnishings are courtesy of leading Italian design firm Manzoroti Ronchetti, and a revolutionary restaurant accounts, ordering and reservations system has been custom-designed for Belgo by Alcatel.

Belgo is French-Canadian Denis Blais and Anglo-Belgian André Plisnier. They met in 1984 while setting up the Dôme on the King's Road and together launched London's first tapas bar – Bar Escoba – in 1986. Their next venture was the trend-setting DNA lounge in 1989, followed by the opening of Belgo Noord in 1992. Future plans include Belgo Zuid in London and Belgo restaurants in Dublin and Edinburgh. Additionally, they are working on a brand-new concept which should reach fruition before the year 2000.

BRANCH CONTACTS

LONDON PUBS GROUP	JEFF PRIMM	0171-973 3096
BROMLEY	See SOUTH EAST LONDON	
CROYDON & SUTTON	PAUL EVERITT	0181-686 5053 (H & W)
EAST LONDON & CITY	ROY JENNER	0181-806 7605 (H)
ENFIELD & BARNET	DEREK SMITH	0181-805 1436 (H & W)
KINGSTON & LEATHERHEAD	ALLAN MARSHALL	0181-942 9115 (H) 0171-918 3376 (W)
NORTH LONDON	ALISON COX	0181-742 0498 (H) 0181-746 8148 (W)
RICHMOND & HOUNSLOW	BRIAN KIRTON	0181-893 4137 (H)
SOUTH EAST LONDON	TONY GIBSON	0181-658 5422 (H & W)
SOUTH WEST ESSEX	ANDREW CLIFTON	01708 765150 (H)
SOUTH WEST LONDON	MARTIN BUTLER	0181-542 3158 (H,W & Fax)
WATFORD & DISTRICT	TONY SMITH	01923 221155 (H & W) Fax: 01923 218625
WEST LONDON	DI KEHOE	0171-824 2408 (W)
WEST MIDDLESEX	ALEX KOVAC	0181-868 2540 (H) 01895 238592 (W)

OUTLETS - SOUTH WEST and WEST PUBS

SW1 BARLEY MOW
 SW1 BUCKINGHAM ARMS
 SW1 FOX & HOUNDS
 SW1 MORPETH ARMS
 SW1 ORANGE BREWERY
 SW1 PAVIOURS ARMS
 SW1 RISING SUN
 SW1 ROYAL OAK
 SW2 HOPE & ANCHOR
 SW2 CROWN & SCEPTRE
 SW3 COOPERS ARMS
 SW3 ROSE
 SW3 SURPRISE
 SW4 MANOR ARMS
 SW4 ROSE & CROWN
 SW6 DUKE OF CUMBERLAND
 SW6 WHITE HORSE
 SW7 ANGLESEA ARMS
 SW8 OLD RED HOUSE
 SW8 PRIORY ARMS
 SW8 SURPRISE
 SW10 FERRET & FIRKIN
 SW10 KINGS ARMS, 190 Fulham Road
 SW10 STARGAZEY
 SW11 BEEHIVE
 SW11 DUKE OF CAMBRIDGE
 SW11 PLOUGH
 SW11 UNITY
 SW12 MOON UNDER WATER
 SW12 NIGHTINGALE
 SW12 PRINCE OF WALES
 SW13 BULLS HEAD
 SW13 RED LION
 SW13 ROSE OF DENMARK
 SW14 HARE & HOUNDS
 SW15 FOX & HOUNDS
 SW15 GREEN MAN
 SW15 RAILWAY
 SW16 HALF & HALF
 SW16 PIED BULL
 SW16 WHITE LION
 SW17 CASTLE
 SW17 J.J. MOONS
 SW17 LEATHER BOTTLE
 SW18 BREWERY TAP
 SW18 COUNTY ARMS
 SW18 HALFWAY HOUSE
 SW18 OLD SERGEANT
 SW18 PIG & WHISTLE
 SW18 SPOTTED DOG
 SW18 SPREAD EAGLE
 SW19 ALEXANDRA
 SW19 KINGS HEAD
 SW19 PRINCE OF WALES, Morden Road
 SW19 PRINCESS ROYAL
 SW19 SULTAN
 SW19 TRAFALGAR
 CARSHALTON, RAILWAY TAV-ERN
 CHESSINGTON, NORTH STAR
 CHEAM, RAILWAY
 HAM, HAND & FLOWER
 KEW, COACH & HORSES
 KINGSTON, ARTFUL DODGER
 KINGSTON, CANBURY ARMS
 KINGSTON, COCOANUT

KINGSTON, DRUIDS HEAD
 KINGSTON, FIGHTING COCKS
 KINGSTON, FLAMINGO BREWERY CO.
 KINGSTON, GAZEBO
 KINGSTON, KELLY ARMS
 KINGSTON, NEWT & FERRET
 KINGSTON, PARK TAVERN
 KINGSTON, SPRING GROVE
 KINGSTON, TWO BREWERS
 KINGSTON, WILLOUGHBY ARMS
 KINGSTON, WYCH ELM
 MITCHAM, CRICKETERS
 MITCHAM, WHITE LION OF MORTIMER
 NEW MALDEN, ROYAL OAK
 RICHMOND, DYSARTS
 RICHMOND, ORANGE TREE
 RICHMOND, SHAFESBURY ARMS
 RICHMOND, TRIPLE CROWN
 RICHMOND, WATERMANS ARMS
 RICHMOND, WHITE CROSS
 SURBITON, BUN SHOP
 SURBITON, DENBY DALE
 SURBITON, NEW PRINCE
 SURBITON, RISING SUN
 SUTTON, MOON ON THE HILL
 SUTTON, NEW TOWN
 WALLINGTON, WHISPERING MOON
 W1 ARGYLL ARMS
 W1 BEEHIVE, 7 Homer Street
 W1 CLEVELAND ARMS
 W1 MOON & SIXPENCE
 W1 MORTIMER ARMS
 W1 PRINCE ALFRED
 W1 WESTMORELAND ARMS
 W1 WINDMILL
 W2 ARCHERY TAVERN
 W2 ROYAL STANDARD
 W3 KINGS ARMS
 W4 WINDMILL
 W5 PLOUGH
 W5 RED LION
 W5 ROSE & CROWN
 W5 WHEATSHEAF
 W6 BROOK GREEN HOTEL
 W6 RICHMOND ARMS
 W10 VILLAGE INN
 W11 FROG & FIRKIN
 W12 MOON ON THE GREEN
 W13 THE FORESTER
 W14 WARWICK ARMS
 BRENTFORD, GLOBE
 BRENTFORD, LORD NELSON
 CRANFORD, QUEENS HEAD
 FELTHAM, GENERAL ROY
 HAMPTON COURT, KINGS ARMS
 HAMPTON WICK, OLD KINGS HEAD
 HAMPTON WICK, WHITE HART
 HARLINGTON, CROWN
 HAYES, BLUE ANCHOR
 HAYES, MOON UNDER WATER
 HAYES END, MOON & SIXPENCE
 HOUNSLOW, BEAVER
 HOUNSLOW, CROSS LANCES
 HOUNSLOW, EARL RUSSELL
 ISLEWORTH, COUNTY ARMS
 ISLEWORTH, ROYAL OAK
 ISLEWORTH, VICTORIA
 SOUTHALL, BEACONSFIELD ARMS

SOUTHALL, SCOTSMAN
 TEDDINGTON, QUEEN DOWAGER
 TEDDINGTON, WALDEGRAVE ARMS
 TWICKENHAM, EEL PIE
 TWICKENHAM, NELSON
 UXBRIDGE, PRINCE OF WALES
 WHITTON, ADMIRAL NELSON
 WHITTON, WHITE HART
OFF TRADE
 W11 Grogblossom
CLUBS
 ISLEWORTH, Western Geophysical Social Club
 W1 Polytechnic of Central London
 S.U. Bar, 104 Bolsover Street
OUTSIDE LONDON
 ASCOT, CRANBOURNE TOWERS
 BRIGHTLINGSEA, RAILWAY
 BRIGHTON, EVENING STAR
 BRIGHTON, SUSSEX YEOMAN
 CATERHAM ON THE HILL, KING & QUEEN
 CHERTSEY, CASTLE
 COLCHESTER, ODD ONE OUT
 CROXLEY GREEN, SPORTSMAN
 EAST MOLESEY, KINGS ARMS
 EGHAM, JOLLY FARMERS
 EGHAM, PRINCE OF WALES
 EGHAM, WHITE LION
 KNEBWORTH (Herts), LYTTON ARMS
 KNOWL HILL (Berks), OLD DEVIL
 LALEHAM, FEATHERS
 LEWES, GARDENERS ARMS
 MANCHESTER, JOLLY ANGLERS
 MORTIMER WEST END (Hants), RED LION
 OUTWOOD (Surrey), DOG & DUCK
 POTTERS BAR, CHEQUERS
 READING, HOBGOBLIN
 READING, HOP LEAF
 READING, MONKS RETREAT
 READING, THREE GUINEAS
 ROTHERWICK (Hants), COACH & HORSES
 SALISBURY, WYNDHAM ARMS
 STEVENAGE, RED LION
 SOUTHAMPTON, WATERLOO ARMS
 STAINES, CAVALIER
 STAINES, PHOENIX
 STOW MARIES (Essex), PRINCE OF WALES
 STRATFIELD SAYE (Hants), NEW INN
 SUNBURY, FLOWER POT
 SUNBURY, HARE & HOUNDS
 SUNNINGDALE, ROYAL OAK
 TILLINGHAM (Essex), CAP & FEATHERS
 WALTON ON THAMES, REGENT
 WATFORD, WEST HERTS SPORTS CLUB
 WEYBRIDGE, PRINCE OF WALES
 WHITCHURCH (Hants), YE OLDE BREWERY INN
 WORCESTER, BREWERY TAP & BREWERY
 WORTHING, VINE



BEER FESTIVAL VI

14 Southend, Croydon, Surrey, CR0 1DL

Tel: 0181 680 9728.

Only 10 mins from East and South Croydon train stations.

TUESDAY 15TH - SUNDAY 20TH AUGUST

Staring
over

40

beers

From classic Firkin Brews such as DOGBOLTER MILD and the Fiddlers very own OLD CRUSTACEAN to special guest ales which include GIBBS MEW, BISHOPS TIPPLE, OAKHAM'S OLD TOSS POT, WYCHWOOD'S DOGS BOLLOCKS, NORTH YORKSHIRE'S DIZZY DICK, BREWERY-ON-SEA RIPTIDE & SHEPHERD NEAME'S BISHOPS FINGER.



USQUE AD MORTEM BIBENDUM