

Aug 93

# LONDON



30p

# DRINKER



**GREAT BRITISH BEER FESTIVAL  
GRAND HALL, OLYMPIA**

See Page 37 for details



**WHITE HART  
Hampton**

Vol 15

Produced by the London branches of the Campaign for Real Ale Ltd

No 7

# Where to buy London Drinker

The following is a list of all of the current outlets for London Drinker. Where the full addresses of outlets are not given, these pubs are to be found in one of the local beer guides, covering the whole of Greater London.

## OUTLETS - EAST and SOUTH EAST PUBS

EC1 ARTILLERY ARMS  
EC1 BISHOPS FINGER  
EC1 PLEASANT & FIRKIN  
EC1 ROSEBERRY  
EC1 SEKFORDE ARMS  
EC3 SWAN  
EC4 BANKER  
EC4 CITY RETREAT  
E1 LORD RODNEYS HEAD  
E2 APPROACH TAVERN  
E2 CAMDENS HEAD  
E2 NELSON'S HEAD  
E2 OWL & PUSSYCAT  
E6 MILLERS WELL  
E8 LADY DIANA  
E9 CHESHAM ARMS  
E9 FALCON & FIRKIN  
E9 ROYAL STANDARD  
E10 DRUM  
E11 GEORGE  
E14 QUEENS HEAD  
E15 GOLDENGROVE  
SE1 ANCHOR & HOPE  
SE1 COPPER  
SE1 FOUNDERS ARMS  
SE1 GOOSE & FIRKIN  
SE1 GRAPES  
SE1 HORNIMAN AT HAYS  
SE1 KINGS ARMS  
SE1 MARKET PORTER  
SE1 PRINCE WILLIAM HENRY  
SE1 SHIP, 68 Borough Road  
SE1 WELLINGTON TAVERN  
SE1 WHEATSHEAF  
SE3 BRITISH OAK  
SE3 HARE & BILLET  
SE3 PRINCESS OF WALES  
SE3 RAILWAY TAVERN  
SE5 PHOENIX & FIRKIN  
SE6 TIGERS HEAD  
SE7 McDONNELLS  
SE8 DOG & BELL  
SE8 ROYAL GEORGE  
SE10 ADMIRAL HARDY  
SE10 ASHBURNHAM ARMS  
SE10 RICHARD I  
SE13 FOX & FIRKIN  
SE16 BLACKSMITHS ARMS  
SE16 MANOR TAVERN  
SE16 MOBY DICK  
SE18 COOPERS ARMS (PLAISTED'S)  
SE18 EARL OF CHATHAM  
SE18 ROSE'S (PRINCE ALBERT)  
SE18 UNION TAVERN  
SE18 VILLAGE BLACKSMITH  
SE20 HOP EXCHANGE  
SE22 CRYSTAL PALACE TAVERN  
SE23 BIRD IN HAND  
SE24 COMMERCIAL  
SE25 ALLIANCE  
SE25 CHERRY TREES

SE25 PRINCE OF DENMARK  
SE25 GOAT HOUSE  
SE26 DULWICH WOOD HOUSE  
SE27 HOPE  
ADDISCOMBE, CLARET WINE BAR  
BARKINGSIDE, NEW FAIRLOP OAK  
BEXLEY, BLUE ANCHOR  
BROMLEY, ARKWRIGHT'S WHEEL  
CROYDON, BUILDERS ARMS  
CROYDON, DOG & BULL  
CLUBS  
SE9 HOWARD CLUB  
**OFF TRADE**  
E4 Waltham Wines, 72 Sewardstone Road.  
SE3 Bitter Experience, 128 Lee Road.  
BEXLEYHEATH, Bitter Experience, 216 Broadway.  
BROMLEY, Bitter End, 139 Masons Hill.

**OUTLETS - WEST CENTRAL, AND NORTH PUBS**  
WC1 CALTHORPE ARMS  
WC1 CITIE OF YORKE  
WC1 MARLBOROUGH ARMS  
WC1 PAKENHAM ARMS  
WC1 PRINCESS LOUISE  
WC1 RUGBY TAVERN  
WC1 SUN  
WC2 CROWN & ANCHOR  
WC2 GEORGE IV  
WC2 MARQUESS OF ANGLESEY  
N1 ALWYNE CASTLE  
N1 COMPTON ARMS  
N1 CROWN  
N1 EARL OF RADNOR  
N1 FLOUNDER & FIRKIN  
N1 GEORGE & VULTURE  
N1 HEMINGFORD ARMS  
N1 KINGS HEAD, 59 Essex Road.  
N1 MALT & HOPS  
N1 MARQUESS TAVERN  
N1 MITRE, Copenhagen Street  
N1 PINT POT  
N1 PRINCE ARTHUR  
N4 TAP & SPILE  
N4 WHITE LION OF MORTIMER  
N7 ADMIRAL MANN  
N7 HOLLOWAY  
N7 FAT HARRY'S  
N8 ELBOW ROOM  
N8 TOLL GATE  
N9 BEEHIVE  
N9 LAMB  
N10 SPOONS  
N11 BANKERS DRAFT  
N12 MOSS HALL TAVERN  
N12 TALLY HO  
N12 TILTED GLASS  
N13 WHOLE HOG  
N16 PRINCE OF WALES  
N16 ROSE & CROWN  
N16 SHAKESPEARE  
N16 TANNERS HALL  
N17 ELBOW ROOM

N17 NEW MOON  
N19 DOG  
N19 J. J. MOONS  
N21 DOG & DUCK  
N21 HALF MOON  
N22 MOON UNDER WATER  
N22 NELSON  
N22 PHOENIX  
BARNET, MOON UNDER WATER  
BARNET, OLD MITRE  
COCKFOSTERS, TRENT TAVERN  
EDGWARE, BLACKING BOTTLE  
ENFIELD CRICKETERS  
ENFIELD, KING & TINKER  
ENFIELD, MOON UNDER WATER  
ENFIELD, OLD WHEATSHEAF  
NEW BARNET, BUILDER ARMS  
NEW BARNET, LORD KITCHENER  
NEW BARNET, RAILWAY BELL  
**OUTLETS - NORTH-WEST PUBS**

NW1 FRIAR & FIRKIN  
NW1 GLOUCESTER ARMS  
NW1 MAN IN THE MOON  
NW1 QUINNS  
NW3 FLASK TAVERN  
NW3 THREE HORESHOES  
NW4 CHEQUERS  
NW4 GREYHOUND  
NW4 WHITE BEAR  
NW4 WHITE LION OF MORTIMER  
NW6 QUEENS ARMS  
NW8 KNIGHTS OF ST JOHN  
NW8 ROSSETTI  
NW9 J. J. MOONS  
NW9 MOON UNDER WATER  
NW10 GRAND JUNCTION ARMS  
NW10 OUTSIDE INN  
HAREFIELD, PLOUGH  
HARROW, MOON ON THE HILL  
HARROW WEALD, SEVEN BALLS  
HATCH END, MOON & SIXPENCE  
KENTON, NEW MOON  
NORTH HARROW, J. J. MOONS  
RUISLIP, J. J. MOONS  
SOUTH HARROW, J. J. MOONS  
WEALDSTONE, ROYAL OAK  
WEALDSTONE, SARSEN STONE  
WEMBLEY, J. J. MOONS

**OFF TRADE**  
N1 Beer Shop, Pitfield Street.  
N2 GROGBLOSSOM  
NW6 Grogblossom, 235 West End Lane.  
**CLUBS**  
NW4 HENDON SOCIAL CLUB, Middlesex University Business School

**OUTLETS - SOUTH WEST and WEST PUBS**  
SW1 BARLEY MOW  
SW1 BUCKINGHAM ARMS  
SW1 FOX & HOUNDS

Continued on p19



## EDITORIAL

This magazine seems to be constantly criticising the big brewers and their products, but as they sometimes make such horrendous decisions, what else can a consumer organisation like CAMRA do, except constructively criticise?

The latest debacle is the deliberate weakening of their beers. With the notable exception of our old friends Whitbread, the other majors have decided on this wheeze because the Customs and Excise have changed the 113 year old method of charging duty at the pre-fermentation stage with a tax on the alcoholic strength of the finished product. The lovable old Brewers' Society said this change would increase duty by £64m a year or 3%. Customs and Excise insist that the new system will not raise the revenue burden on the industry and are examining the Brewers' Society calculations. This raises questions about the brewers' ability to do their sums. Whatever the truth of the matter the brewers seem determined to make the customer pay as usual, but, this underhand method that they have been forced to reveal by pressure from the press is particularly nasty.

Already I find it difficult to bring myself to

drink the  
beers of  
these  
brewers, as  
some are so  
bland,  
insipid and  
sweet eg:  
Webster's  
Yorkshire  
Bitter and  
Worthington

Best Bitter that with the reduction in strength and increase in Original Gravity these beers will become even sweeter because more

sugars will have to be used in the brewing process. To be fair, Courage will not be reducing the strength of John Smiths, Courage Best and Directors. But, as beer prices are again being raised above the rate of inflation this is poor consolation for the embattled London drinker.

We in the capital are not only expected to drink perhaps the poorest quality beer in England, with the worthy exceptions of Youngs and Fullers, but we are also expected to pay through the nose for it. Figures (shown below) from the recently published CAMRA prices survey only help to underline the point. But it is illuminating to compare the prices of a few national beers between London and the rest of England.

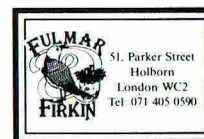
Interestingly Youngs Bitter averages out at 125p per pint which must have included special Free House offers. Regulars will know to their cost that in tied houses it is more like 149p. Again, I make the point that the most profitable independent is able to sell its fine beers to a thirsty public at less than a pound a pint and to sell them in such volumes that their profits have nearly doubled this year. Regular readers will have recognised Holts of Manches-

terby now. It makes you think what the others could do if they made a conscious effort to peg their prices in

	London	North	Yorkshire	W Midlands
Tetley Bitter	157p	130p	124p	132p
Courage Directors	169p	145p	137p	143p
Draught Bass	140p	138p	133p	139p
Burton Ale	165p	145p	139p	143p
Flowers Original	160p	144p	145p	143p

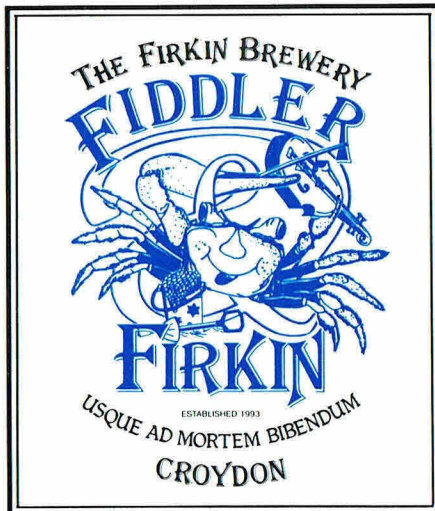
the capital or even to reduce them!

Chris Cobbold



# THE FIRKIN BREWERY

presents  
**Yet Another  
Firkin Pub Opening**  
**Wednesday  
25th August 1993  
at 8pm**



14, South End  
Croydon, Surrey CR0 1DL  
Tel: 081 680 9728

**USQUE AD MORTEM BIBENDUM**



---

## IDLE MOMENTS

Hi there! I'm glad you've come back for some more time wasting nonsense. And this month we have something a little different to start with. You may recall that some time ago Pat Hanson challenged us with a couple of monosyllabic words which produced three syllable anagrams. I can't claim that it turned out to be an unalloyed success - in fact it lasted about as long as the R101 - as nobody responded to it. Still, nothing daunted, Pat has come up with another puzzler. This time the challenge is to put together two words for animals to make one which isn't. In Pat's words: "The only example I can think of is SEAL + ANT = SEALANT but there must be more. Maybe LD readers can find them." Well, there is your challenge; if you can think of any do please send them in and earn yourself a month or so of notoriety as the sort of person who reads Idle Moments. In fact to encourage you, if I get enough entries to make it worthwhile I shall donate a small prize to the first one out of the hat. Can't say fairer than that, can I?

Meanwhile let's get on with the usual bits starting with the answers to last month's number puzzles:

1. 7 Months of the Year are Thirty One Days Long
2. 0101 Dialling Code for the United States
3. 3 Colours (or Crosses) on the Union Flag
4. 6,080 Feet in a Nautical Mile
5. 2 Turtle Doves
6. 4 Stars on the New Zealand Flag
7. 48 Contiguous States of the United States
8. 5 Oceans of the World
9. 1773 Year of the Boston Tea Party
10. 1 Atomic Number of Hydrogen

And now we'll plough straight in to this month's number puzzles:

1. 7 for a SN to be T
2. 50 S for a B on a D
3. 4 I of C in L
4. 64 Y of QVR
5. 1854 C of the LB
6. 1 FL on a RR
7. 14 D in a F
8. 1914 S of the FWW
9. 155 IODC
10. 10 C in a D

By the way, did you know that Graham Dene, one of the inspirations for our number puzzles, is back on the wireless on Virgin 1215. I haven't heard him so I don't know if he took his Dene Machine with him from Capital Gold. Still that's by the way; here are the brewery anagrams, starting yet again with last month's answers:

- |                  |              |
|------------------|--------------|
| 1. 'ERE DINER    | REINDEER     |
| 2. MUM HITS SALE | SAMUEL SMITH |
| 3. PACK HOB      | HOP BACK     |
| 4. TIES COTS     | SCOTTIES     |
| 5. DO ROB WINO   | ROBINWOOD    |

And so as not to change the habits of a lifetime here are this month's:

1. MARY SENT
2. KISS RUM SMELL
3. THEIR AGE
4. DATE RUG
5. CODE IN PO

Before we get on with the General Knowledge questions, here is a little question of a more banal nature. What is the last thing that goes through a fly's mind as he hits your car windscreen? (The answer appears at the end.) Now on with the (oh all right) Trivia, answers first:

1. It is the presidential helicopter of the USA
2. Countdown
3. Oxford & Cambridge, Rugby Union
4. Jean Baptiste Bernadotte
5. Dave Allen
6. Marshalsea Prison
7. Samuel Pepys' Diary
8. Salinity
9. Tin
10. Spain

And now the questions:

1. Why was 30th June longer than 29th June in 1993?
2. Who made the film "Things to Come" based on the book by H.G.Wells?
3. Fortitude, justice, prudence and temperance are four of the seven virtues. What are the other three?
4. What country's highest honour is the Order of the Elephant?
5. In which Australian state is Broken Hill?

*Contd. on p.6*

---

## YOUNG'S NEWS

John Young, chairman of Young's Brewery in Wandsworth has issued an appeal to national and local government to stop meddling with the brewing industry. He highlights three main areas of concern:

1. The duty on beer which is the highest in Europe.
2. The "disastrous" Beer Orders, imposed after the 1989 report of the Monopolies and Mergers Commission.
3. The activities of environmental health officers now known, he says, as the Health Police.

In his company's 1993 report and accounts he says that difficult trading conditions have not been improved by "the excessive level of interference in our industry by the Government, the Civil Service and local authorities." He complains that the duty on British beer is ten times higher than in Germany, twenty times what it is in Spain and twenty five times the rate in France. "On top of this," he says, "we have Value Added Tax, which means that around fifty pence goes to the exchequer every time we sell a pint of Young's Special.

"The relaxation of the regulations governing the import of duty-free (*actually duty paid at the lower continental rates* - Ed.) beers wines and spirits for personal use has led to the farcical situation where some British brewers are now shipping beer to Calais and Boulogne so that day trippers can buy it in French hypermarkets and bring it back at knock down prices.

"This is a situation that needs urgent attention. If we are to have a free market in Europe, we must compete on equal terms with manufacturers in the other member states and not be burdened by penal rates of duty."

The Beer Orders, says Mr. Young, have been "a disaster mitigated only by the opportunities they have presented companies such as Young & Co to sell cask conditioned ales through the national brewers' tied houses." He says that the orders have resulted in larger monopolies, a reduction in choice for the drinker, higher prices throughout the industry and the closure of breweries.

His strongest words are reserved for local government where, he says, the level of bureaucracy has never been higher. "The main villains as far as pubs are concerned are environmental health officers, now commonly referred to as Health Police. They are interpreting regulations with nit-picking zeal and doing it with alarming inconsistency.

"Regulations on hygiene in places where food and drink are prepared and served are both necessary and desirable but their application and enforcement must be handled sensibly. This is not happening."

He says that the company has produced two thick manuals to guide managers and tenants through the minefield and gobbledegook of Government regulations, European directives and local by-laws.

Mr. Young's conclusion: "So much for Mr. Major's deregulation; seems to me ever-increasing regulation."

From a Young & Co's press release

---

*Contd. from p.5*

6. Who was the first commoner to have his portrait on a British postage stamp?
7. And who was the second commoner to have his portrait on a British postage stamp?
8. And while still on the subject of postage stamps, what two European countries issue postage stamps bearing their name in two languages?
9. What was Elvis Presley's first No. 1 hit in the United Kingdom?
10. And finally, what was the Beatles' LAST U.K. No. 1?

Last Month, you may recall, I asked you how fast somebody at the Equator is rotating around the centre of the Earth in both miles per hour. The answer is 1,037 mph (to the nearest whole number), though 1,000 mph is near enough. Incidentally if you want the answer in RPM, it is 0.0006944 or the reciprocal of 1440, the number of minutes in a day.

And finally, the answer to my little question about the fly - his bum, what else? Bye for now!

Andy Pirson

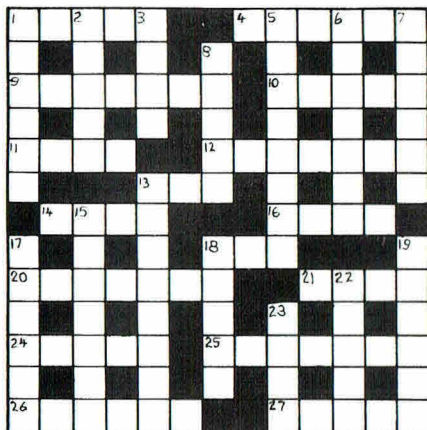
---



# LONDON DRINKER CROSSWORD

Compiled by DAVE QUINTON

£10 PRIZE TO BE WON



Name .....

Address .....

.....

.....

All correct entries received by first post on 25th August will be entered into a draw for the prize.

Prize winner will be announced in the October London Drinker. Solution next month.

All entries to be submitted to:  
London Drinker Crossword  
25 Valens House  
Upper Tulse Hill  
London SW2 2RX

## LAST MONTH'S SOLUTION



## ACROSS

1. Economic collapse, though credit remains. [5]
4. Measure round divine waist. [6]
9. Decide to have another go at the crossword. [7]
10. Super way to make a wallet [5]
11. Badger nest with a bird in it? [4]
12. Sewer guard? [7]
13. Throw withdrawn. [3]
14. Toxophilite without hesitation is made chief. [4]
16. I came across to return article..... [4]
18. ....article caught in it? [3]
20. Discovered to be wise. [7]
21. Start race for pudding? [4]
24. Musical Times. [5]
25. Enlarge about officer. [7]
26. Speech therapist a bit of a criminal. [6]
27. Cattle drive? [5]

## DOWN

1. Pile made by Rover, the dog. [6]
2. Burning desire? [5]
3. Part of Chalfont St. Giles. [4]
5. Devil allowed to be understood. [8]
6. Bad rule broken? Tough! [7]
7. The Spanish still following the team. [6]
8. Yet P.T. may be unimportant. [5]
13. Pop's into beer drinks. [8]
15. Pam and Dora make the chart..... [4,3]
17. ....seconds later he hits the roof. [6]
18. Saw some road agents in robbery. [5]
19. Young woman has a right to money. [6]
22. Match held in green field. [5]
23. A newspaper brought up the rear. [4]

Winner of the prize for the June Crossword:

Eddie Sissons, 31 Reynolds House, Erasmus Street, London SW1P 4HP

Other correct entries were received from:

Paul Adams, Tony Alpe, Robert Anderson, Pat Andrews, Geoff B, Robin Bolt, Alan Brooke, Andy Camroux, Neil Chapman, A.P.Cornish, B.H.Fletcher, P.J.S.French, Eileen Graves, Paul Gray, J.E.Green, John Harmer, John Heath, Alison Henley, William Hill, Hugh Jampton, Doug King & Queen, Simon Lammie, Pete Large, A.J.McNair, Jim Mason, January Musson, Terry Neill, Rab Noolas, H.O'Connor, David Oddy, Clive Palmer, Nigel Parsons, Steve Piggott, Jim Richards, W.J.A.Rudderham, A.C.Scutter, Peter Simpson, Roger Slapper, Old Snokey, David Tyrrell, Neil Walton, Martin Weedon, Spud Whale, Tony Whitford, Chris Whithouse, Stephen Williams, D.Woodward, T.Wookey, Yak.

There was also one incorrect entry.



---

## REAL PUBS

### **KINGS ARMS**

*081-977 1729*

Lion Gate, Hampton Court  
(GBG Page 200)

### **NEWT AND FERRET**

*081 546 3804*

Fairfield South, Kingston  
(GBG Page 196)

### **EEL PIE**

*081-891 1717*

Church Street, Twickenham  
(GBG Page 201)

### **DOG AND DUCK**

*034 284 2964*

Outwood, Surrey  
(GBG Page 272)

### **WOODMAN**

*071-228 2968*

High Street, Battersea

### **COACH AND HORSES**

*03256 762542*

Rotherwick, Hampshire

### **RAILWAY TAVERN**

*081-878 7361*

Sheen Lane, Mortlake (GBG Page 195)

For Information, Nearest Public Transport - Food  
Quiz Nights, Current Range of Beers  
Phone the Pub

## REAL BEERS

TANGLEFOOT · BADGER BEST · WADSWORTHS 6X

EAGLE BITTER · PILGRIM PORTER · GRIBBLE ALE

REG'S TIPPLE · EVERARDS OLD ORIGINAL · REAL CIDER

REAL CIDER ONLY AT THE WOODMAN AND NEWT & FERRETT

## MUNICH'S FINEST

Recommended by the "FOOD & DRINK" Programme

Bottled beers from the Hofbräuhaus Brewery, Munich

Hefe Weissbier 5.5% ABV · Urbräu 5.0% ABV · Fest Bier 5.7% ABV

---

## LETTERS TO THE EDITORS

Dear Editors,

Following on from "The Perfect Excuse" on page 16 of the June London Drinker, in Croydon we have a pub called "NOWHERE IN PARTICULAR", with a sign outside it boasting "The Honest Man's Pub". When asked one day where I went at lunchtime, my reply "The North Pole" (a pub in Greenwich) was met with a frosty response.

On a different subject: "Two pints of Youngs," said the customer to Frank.

"Two pints of Youngs what?" came the reply. "Oh sorry, two pints of Youngs please!"

The above took place in the Dog & Bull, Surrey Street, Croydon - a Youngs pub.

Cheers!

Paul Everitt, South Croydon.

Dear Editors,

Finding that rare commodity, the cheapest pint of beer in London today is very hard but it was quite refreshing to find a pub in north London where I obtained an excellent pint of Bass for only £1.00. I am referring to the Park Tavern in Tollington Park where all beers are £1.00 a pint during happy hour between 11.00am and 2.00pm, Monday to Thursday. Can anyone beat that?

Yours sincerely,

Tommy Gemmell, London N4.

Dear Editors,

Regarding "News from the Provinces" article on page 23 of the July London Drinker.

The first Wychwood Brewery tied house to open was in fact the Hobgoblin in Staines, Surrey and is to be found in Church Street (about 10 minutes walk from the British Rail station). The new Surrey Pub Guide published in April this year describes it thus:

"A most welcome arrival on the local pub scene that has revitalised what was once the 'Clarence'. The refurbishment presents a pleasant woody interior and a range of competitively priced beers that will satisfy most drinkers."

Beers available are Wychwood Shires at £1.25; Best at 1.45; Dr. Thirsty's at £1.55 and Hobgoblin at £1.65. Two guest beers are also available. I hope this information is of use to your readers.

Cheers!

Ian Davey, Egham, Surrey.

Dear Editors,

We have been concerned about 'clean' glasses for a long time now and have composed this letter to voice our views and worries and to hopefully receive some answers and perhaps reassurance.

*Clean Glass Sir?*

*What is a clean glass? Since we began drinking beer in pubs the methods used to wash/clean glasses have changed. Most pubs now have a 'dishwasher' system. In the past I remember a swirley brush device and have seen one still in use. Prior to that glasses were washed in hot water with a drop of vinegar added to make the glass sparkle. In principle the modern methods seem fine but in practice are worrying. The agents added to wash and rinse are detergents - petrochemical products and the amount added to the dispenser seems very arbitrary as it is up to bar staff to add the fluid. I've observed this procedure many times and have asked bar persons if a carefully measured amount is used each time. Some have said 'not really, its up to me', or words to that effect. Of course all pub staff are not guilty of slipshod methods.*

*What should worry beer drinkers is that if a small residue is left in a 'clean' glass this can not only kill the head on the beer but is ingested by the drinker. Some years ago there was an interesting article in one of the broadsheet newspapers in the medical or health section. The article was written by or contained an opinion of a professor at U.C.H. - Professor Clark (or Clarke) whose field included abdominal problems. He expressed the view that beer drinkers were especially at risk and could suffer abdominal disorders in the future due to ingesting detergent-residues over the years. We usually ask for subsequent pints to be served in the same glass to minimise the problem. This request is often met with surprise or the comment that 'It's company policy to give customers a fresh glass'. It is worth considering whether by giving you a 'clean' glass they are doing you a disservice.*

Yours sincerely,

G. Demetris, London N19, S. K. Knowles, London E11, S. Truman, Richmond

---

*Contd. from p.9*

Dear Editors,

Looking back through my collection of London Drinkers a recurring theme on the letters pages is reasons for refusal of service in pubs. As a postman I have been refused service for being in Royal Mail uniform in two pubs:

Bishops Finger (Shepherd Neame), EC1  
Master Gunner (Young), EC4

While on holidays recently I came into central London for the day. I was refused service in a Nicholson's pub, the Fox & Anchor, EC1 for wearing a T shirt. No notice that T shirts are not allowed was visible and the pub does its own T- shirts.

Yours sincerely,  
Colin Price, Barking.

Dear Editors

Keith Flett (July L.D.) has asked for a list of beers which qualify as a London style beer. The difficulty in compiling a list, however, is that the character of beers varies. There is too much experimenting with recipes these days and a beer which qualifies today as a London pint might not qualify next week. Young's Ordinary is a good example. Its appearance is fairly consistent, but the degree of bitterness is variable.

Fuller's Chiswick Bitter was a classic London Pint, but it is now inconsistent.

Some years ago Taylor Walker (not that long ago) got it nearly right.

Brak's Henley Bitter is fairly consistent and perhaps as near as you can get to the London style.

Outside the South East corner, Old Mill Traditional Bitter was a classic example of the London style, but is now softer and no longer qualifies.

You can see how difficult it is to compile a list - its like trying to compile a list of Burton style beers. Impossible.

I've tasted fairly good examples of the London style from as far afield as the Orkney's and Guernsey.

You just have to enjoy them when you find them, which is the purpose of my Definitive Guide.

A quality which I omitted from my guide, however, is the ability of a London pint to return time and time again long after you've finished drinking it.

Yours sincerely,  
G. Broadley

---

## IF YOU LIKE PUBS YOU MUST READ THIS!

The London Pubs Group hold bi-monthly meetings to discuss matters concerning pubs in the Capital. We work in conjunction with local CAMRA branches to organise campaigns to save threatened pubs, and any information on plans for existing pubs is always appreciated.

At the moment we are planning to set up a photographic record of all Listed pubs and interesting pubs in London. We are looking for someone to volunteer as our Archivist; the main task of which will be to catalogue the negatives of pubs and store them in a suitable environment. If you can help, please call Roger Sedgley on 081-691 2915 for further details.

Our next meeting will be held on Wednesday, 1st September at the Grapes, Borough High Street, SE1. This meeting replaces the one which would have been held at the end of August. We shall be discussing the attitudes of

Local Planning Authorities to pubs, and also views on the Statutory Listing of pubs.

A further meeting on Wednesday, 27th October will again focus on the Listing process, and we hope to have a speaker from English Heritage along to give a short talk and answer questions.

Finally, we will be enjoying a pub crawl of Crouch End on Monday, 27th September. This will start at Queens, Crouch End Broadway at about 7.30 pm for 8 pm. If you can make it please feel free to come along.

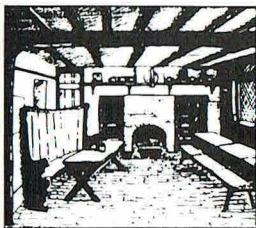
The Group is by no means elitist, and we will warmly welcome new faces, both CAMRA and Non-CAMRA members. So if you are concerned about your Local, or just interested in chatting about pubs in general, please come along!

Andrew Padgham

---



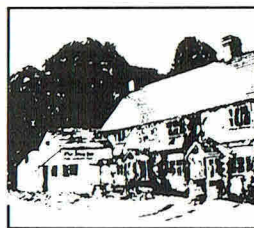
# WHAT REALLY GREAT PUBS!



*The Blue Ship, The Haven*



*The Stag Inn, Balls Cross*



*The Cherrytree, Faygate*

## JOIN THE KING & BARNES ALE TRAIL

With the summer months here at last, what better way of getting out and about than to use an **ALE TRAIL PASSPORT** as your guide to the glorious countryside of Sussex, Surrey and Kent?

In each of King & Barnes' individual Traditional English Pubs you will find a warm welcome, good food and FINE SUSSEX ALES.

Pick up an **ALE TRAIL PASSPORT** in any King & Barnes Pub (or write to The Brewery at the address below), and you are on your way to winning either an **ALE TRAIL CLUB** Dartington Pint Mug, or a specially emblazoned Sweatshirt.

All you have to do is to visit each Pub (in any order you like), buy a PINT of any of our FINE SUSSEX ALES, and then kindly ask the Bar

Staff to enter a House Sticker and date it in the space provided in your **ALE TRAIL PASSPORT**.

But there's no need to hurry – there's no closing date – so take your time and enjoy a leisurely pint in all of these individual Pubs. For obvious drink and drive reasons, no more than 4 pubs may be entered in the Passport per day. Remember be safe, don't drink and drive.

Over 1,350 people have already completed the ALE TRAIL, and currently 32 have been round more than 10 times. There are different coloured Sweatshirts denoting one, three, five, ten and fifteen TRAILS.

Finally don't worry if you don't manage to make it all the way round – at least you will have found some great pubs, met new friends, and enjoyed a few pints of FINE SUSSEX ALES.



King & Barnes Ltd., The Horsham Brewery  
18 Bishopric, Horsham, West Sussex, RH12 1QP. Tel. Horsham (0403) 270470

## WHITE HORSE INDIA PALE ALE

### How it all began

In July 1990 Mark Dorber organised a seminar on Burton Pale Ales at the White Horse, Parson's Green attended by four Burton brewers and a handful of beer journalists. From the discussions and the comparative tasting of the contemporary Burton Pale Ales represented, the germ of an idea emerged. Wouldn't it be fascinating to attempt to recreate the style of pale ale that had led to Burton's rise to pre-eminence as a brewing centre in the second half of the 19th century?

### How it was planned

In April a telephone call to the technical Director of Bass Brewers, Gus Guthrie received an encouraging response and the project was given the go ahead with David Moore acting as coordinator for Bass Brewers. Tom Dawson, a retired and greatly respected brewer at Bass and a participant at the 1990 seminar, agreed to act as the consultant to the project.

Tom recalled brewing a strong pale ale known as Bass 'Continental' for the Belgian market from the 50s to late 70s at an original gravity of 1063 and representing an unbroken line of IPAs from the 1850s according to Bass & Co's gravity records. Tom consulted brewing ledgers going back to the 1880s and then formulated the brewing recipe for the White Horse India Pale Ale project.

IPA as a beer style was first developed by a London brewer Mark Hodgson probably between 1790 and 1800. He dominated the export market to India up to 1830 with his bitter pale ale exporting 9,000 barrels in 1807 increasing to 41,000 barrels by 1817.

The Burton brewers who had suffered the collapse of their Baltic Ale trade in 1807 were seeking new markets and in 1822 a Burton brewer Allsopp asked his head brewer and Maltster, Job Goodhead if he could replicate Hodgson's beer. He did so using a teapot for the first mash and within a year Allsopp and Bass were mounting a challenge to rival Hodgson.

IPA in its Burton interpretation was a PALE, SPARKLING ALE - heavily hopped and highly conditioned for practical (i.e. strong in alcohol and bitterness for their preservative effects) and aesthetic reasons.

### How it all happened

On Saturday 19th June a team of young brewers from Bass assembled at the Bass

Museum Brewery joined by cellarmen from the White Horse.

The Museum's Brewhouse dating from the 1920s is a lovely example of a tower type plant. It used to be in use at Cape Hill as the experimental plant and was brought over to Burton and installed in the old engine house (now within the precincts of the Museum) in the late 1970's. It has a five barrel capacity which necessitated two brews in order to fulfil the festival order of "at least six hogsheads" for the White Horse.

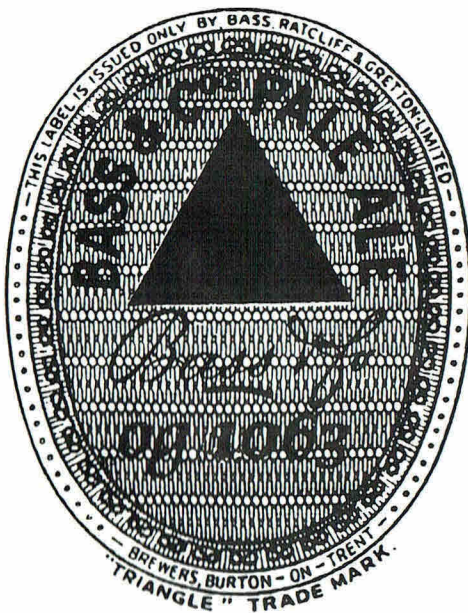
Starting at 6 a.m. and working in two shifts

brewing and cleaning up lasted for 29 hours.

### Notes on the materials and methods used:

#### MALT:

90% Malt - Halcyon, pale malt and 10% sugar





---

Contd. from p.19

## HOPS:

Progress whole hops in copper at the very high rate of 3.5lbs per barrel - this is a 'fuggles type' hop with low to medium bittering qualities but whose alpha acid yield at 7% was 40% higher than the assumption underpinning Tom's IPA recipe resulting in a beer with significantly greater bitterness than planned.

Dry hopped with East Kent Goldings at the rate of 6 oz per barrel.

Wort from copper was run over a bed of Progress in the collecting vessel prior to cooling to strain and further clarify the wort and give a little extra hop aroma.

## YEAST:

Yeast pitched was the two strain Draught Bass yeast whose ancestry dates back to the Burton Unions.

It was 'second generation' yeast i.e. cropped from the first brew produced with yeast propagated from an original slide. This yeast was thought likely to yield the best results in terms of its attenuative properties and its ability to undergo a long secondary fermentation in cask.

## WATER:

Water was de-ionised well water with a salt content adjusted to reflect high levels of Gypsum - a critical element in the production of pale sparkling ales.

## Technical results:

<i>Fermenting vessel 1:</i>		<i>Fermenting vessel 2:</i>	
Original Gravity	1064	Original Gravity	
1064			
Alcohol by volume	6.8%	Alcohol by volume	
7.2%			
Colour Units	21	Colour Units	18
Bitterness Units	88	Bitterness Units	83

---

## AMERICAN INVASION CONTINUES

One of the smallest breweries to enjoy distribution through large areas of the United Kingdom, the Anchor Brewery of San Francisco employs only around 40 people worldwide yet its products can be found in many of the larger Waitrose and Tesco supermarkets. Now Anchor Steam Beer has arrived in over 350 Augustus Barnett off licences throughout the country.

When this latest move was announced, Denis Palmer, Anchor's UK representative commented, "We are delighted to be gaining representation in the larger chains as Anchor Steam is at the *superpremium* [our italics - Ed.] end of the market. We are one of the smallest breweries to enjoy distribution in the UK so it is encouraging to see that this sector of the trade realises the potential of a specialist beer like Anchor and is prepared to stock our products regardless of the higher price." Anchor steam will retail in Augustus Barnett outlets at £1.59 for a 355ml (12 fl. oz.) non-return bottle. Meanwhile Waitrose are now also taking the even more special (hyperpremium?) Anchor Liberty Ale as well as the Steam Beer.

To celebrate American Independence day on Sunday 4th July, the White Horse at Parsons Green, SW6 held an appropriate celebration at which no less than five different Anchor Brewery products were available. For the first time in this country Liberty Ale was on draught alongside the Steam Beer and Wheat Beer while the Porter and a limited supply of Christmas Ale were available in bottles. We should point out that in the context of Anchor beers draught in fact means keg dispense but as American health regulations dictate that this form of dispense is a legal requirement in the USA the beer would not be suitable for serving through a handpump. We shall leave you to your own opinion as to whether that constitutes a real beer but if you are feeling flush it's well worth a try.

Finally we would like to report that Anchor Steam Beer has also recently become available on draught at the County Arms in Isleworth albeit at the somewhat *superpremium* price of £2.05 a pint.

★ ★ ★ ★



*Derek and Mary invite you to the*

# **WILLOUGHBY GARDEN PARTY**



**Friday August 13th to Sunday August 15th  
at the**

**WILLOUGHBY ARMS**

**Willoughby Road (off Canbury Park Road),  
Kingston Upon Thames**

**\* Choice of 10 Real Ales    \* Barbecue in Garden**

*10 minutes from Kingston BR  
(or Bus 371 to Park Road  
& 10 minute walk)*

***Tel: 081-546 4236***

*an Oak Taverns house*

---

## THE OLD KING LUD

The Old King Lud at 12 Ludgate Circus, EC4 has reopened after a closure of two years as the most ambitious Whitbread 'Hogshead Ale House' conversion yet; it is now subtitled "Hogshead in Ludgate". A total of twenty eight beers are available, these being served from a total of 20 handpumps and 10 casks on stillage behind the bar. The normal 'Whitbread' range is available including Boddington Mild and Bitter, Flowers IPA, Castle Eden Ale etc. together with a wide range of provincial brewers' products from the likes of Adnams, Everards, Eldridge Pope, Fuller and Wadworth and some limited input from established small brewers such as Smiles and Ringwood.

This is the first serious attempt at a 'beer exhibition' pub in central London since the opening of the Sun in Lambs Conduit Street,

WC1 in the early 1970's. Prices are around £1.80 a pint which, while being plenty high enough are not at all unusual for central London. We wish it well and welcome the choice, especially from the smaller breweries. We must, however, express our concern that with such a range of beers available quality may be difficult to maintain without a substantial turnover in trade. Only time will tell.

The decor can best be described as "early Firkin" with bare floor and walls, wooden benches and ceiling fans. Traditional pub games available include dominoes, chess, backgammon etc. The Old King Lud is open from 11.00am until 11.00pm Monday to Saturday; 12.00 noon until 3.00pm Sunday lunchtime and is closed on Sunday evenings. Cooked food until is available 10pm. **Roger Warhurst**

---

## TRADITION & GENERATIONS AT THE GREAT BRITISH BEER FESTIVAL

There will be both young and old at this year's Great British Beer Festival and that applies to both the breweries and the customers!

With over 300 British real ales on sale from 140 different brewers, there are both the old traditional brewers and the new ones represented. Many of the breweries represented date from the last century when Victorian technology really made an impact on the brewing process. Names such as Adnams, from Suffolk, Gales from Portsmouth and Charles Wells from Bedford all date from the reign of Victoria.

Some of the beers on sale will be from breweries even older. There has been a brewery on the site of the local London brewer, Youngs, since 1675. Slightly younger is Brakspear's brewery (Henley) where the site dates from 1700 and Tolly Cobbold (Ipswich) where brewing has taken place since 1725.

Contrast this then with the new brewers who have only started up in the 1980's. London is surrounded by them, although, mainly due to high costs few have ever tried in London itself. At the Festival you can try beers from Essex (Crouch Vale), Bedfordshire (Banks & Taylors), Kent (Goachers) and Surrey (Pilgrim) to name but a few.

The range of ages of the breweries is almost as great as the range of the visitors. The Festival offers a Family Room for parents with their youngsters so those who have not quite reached even their first birthday can attend as well as the traditional over eighteens. Last year there was even the over eighties. With a bit of care and a guide you may even be able to find a drink from a brewery the same age as you!

### HAVING TROUBLE GETTING YOUR FAVOURITE BREW?

Cask conditioned ales to take away  
Large range of imported beers & lagers  
Bottled conditioned beers  
Jugs available · Large wine selection

**10% DISCOUNT OFF ALL CASK  
AND BOTTLED BEERS**

**GALES  
WINE MERCHANTS**  
204 High Road · Woodford Green  
Essex

Tel: 081-504 9347

Mon-Sat 10 am - 10.30 pm  
Sun Midday - 3 pm; 7pm - 10.30 pm



---

## FROM OUR ARCHIVES

TEN YEARS AGO the 24 page August 1983 edition of *London Drinker* appeared in Yellow covers - on the front was a photograph of Young's Shire horses and dray at the launch of the short-lived Young John's Ale.

In his Editorial, Chris Cobbold discussed the problem of beer returned to casks, an illegal and unhygienic procedure in most circumstances (especially when it involves beer recycled from unfinished glasses) which continues to this day.

Fuller's had started a new passport scheme, and had recently opened the George & Vulture in Pitfield St, N1.

Three pub crawls were included; one was entitled "The Edg 'where' Crawl, or is the A5 Alive?" Chronicling a crawl on a Sunday by Laurence Fryer and Brian Johnston, it visited 5 pubs, with 2 as a P.S., in Edgware. That probably qualified it as a travelogue, which the two others certainly were. Prices were noted and ranged from Ind Coope Bitter at 65p a pint to Truman Sampson at 84p, in different pubs. A "gremlin" spelt the last name in two different ways. (How can a 100%-plus price rise in 10 years be justified? - Author).

Red Rover sampled the delights of Dagenham with his usual candour, as witnessed by the Editor's comment at the end of the article; "News has reached us that following Red Rover's last article, certain publicans in the Hounslow area are howling for that contributor's blood. Strange how painful the truth can sometimes be!" I can't recall who originated that report, but can certainly vouch for its accuracy - on one occasion on the way back from the printer's, out of curiosity I entered a pub featured in the offending article clutching a copy, which the landlord spotted and accused me of being its author. A heated dispute followed during which he forgot to charge for my pint. Just as well - it was undrinkable, and when I revealed my identity as one of the Editors, he invited me somewhat vehemently to vacate the premises.

The third - and very much a travelogue - was "Capes and Ale" by P. Sartist. This chronicled

the first three days of a week's cycle tour made by a group of dedicated drinkers, from Liverpool via Warrington, Stockport Bakewell to Wirksworth. End of part one showed statistics of 49½ pints in 29 pubs over a distance of 114.2 miles. A few years before this I took part in one of their tours - too much like hard work, carrying tents and so on, even for a hardened tandem rider - the peak day in that epic, in Cumbria, involved 26 pints.

Dave Quinton produced a critique on a circular issued to Charrington outlets, headed REAL ALE, which contained this sentence regarding top pressure: "This method uses air pressure to push ale up from the cellar . . . It does not alter the beer in any way." At the time Charringtons were putting "Real Ale" signs on all their pubs regardless of system of dispense. The circular began with the words "All ale is real, although in the past few years the phrase has come to mean ale brewed in the traditional manner." Dave defined CAMRA's attitude in concise terms, and finished with the words "Top pressure beer is NOT Real Ale."

Allied Breweries had launched Gold Cross, a "real" lager on handpump. It was drinkable, but cold, and didn't really catch on - one of the many failed good intentions.

The Sun Freehouse advertised a London launching promotion for Greenall Whitley ales, and Robert Porter & Co announced that they were supplying Gibbs Mew beers, of Salisbury, in the Greater London area.

Charringtons were planning to oppose the license application of the Phoenix & Firkin above Denmark Hill railway station - I was personally involved in the pub project, being a local worker as well as a friend of David Bruce, and thus kept a close eye on the situation. Needless to say, the pub duly opened and thrives to this day. Indeed, quite a lot of my welfare work on behalf of the school was done on the premises!

During the period between the 2 issues under discussion in this piece, the Firkin pubs were constantly mentioned in our pages - a situation not unconnected with the fact



that I was not only part of the Editorial team, but also CAMRA's Brewery Liaison Officer for Bruces. In consequence . . .

FIVE YEARS AGO the two-tone brown frame on the front cover of the 36-page August 1988 issue featured a photograph of David Bruce and two helpers carrying a coffin containing a very dead stuffed flamingo from the Flamingo & Firkin, Kingston. Formerly the Three Tuns, it was David's last and shortest-lived pub, being clawed back by Grand Met after less than a year and a lot of expensive renovation work.

The content carried a photograph of a farewell presentation to David, which as his B.L.O. I had the pleasure of making on CAMRA's behalf. A gremlin in the photographic department reversed the image - inexcusable as lettering in the foreground should have made the fact obvious. Just to compound the error, two very doctored photos in "Dear Dipsy" - on which I had expended a huge amount of time, imagination and artwork,

not to mention beer, appeared in reverse order, making even more nonsense of the column than usual!

The Editorial dwelt on the reasons for attending a beer festival, and the atmosphere to expect, either as customer or volunteer.

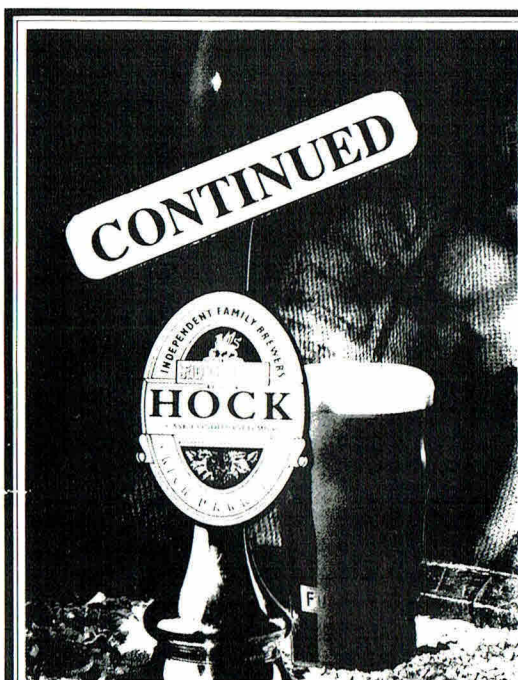
There were two pub crawls included, one of Reading, and the second half of the Greenwich Historicrawl begun in the June issue.

With the closure of Wethered's of Marlow, Whitbread only had four breweries left to close. Since that time Fremlin's of Faversham has also bitten the dust.

There was an aggregate of 10 pages of paid advertising - a large percentage of the content on the face of it, but that is the only way a magazine can be financed; the cover price only reflects about half the cost of production.

More next time - If you get to the GBBF, have one for me. Cheers!

Martin Smith



## HOCK

NEW  
CASK CONDITIONED  
MILD



Fuller, Smith & Turner have re-introduced Mild as a cask-conditioned draught beer. From the beginning of March until Easter, you can enjoy the taste of a beer which is rich, dark and malty in flavour. It is a beer as old as the brewing tradition in this country and for this reason we have called our new beer by the name it was known 400 years ago - Hock.



# FIRST CROYDON BEER FESTIVAL

**8TH TO 9TH OCTOBER 1993**

**Ruskin House  
Coombe Road, Croydon**

Friday - Evening  
Saturday - All Day

Discount for CAMRA Members

**Organised by Croydon & Sutton CAMRA  
In association with Ruskin House Club**





---

## A SOCIAL SECRETARY'S MAIDEN SPEECH

Who in their right mind wants to be a Social Secretary of a CAMRA branch? Well I do. Can't think why. Except I must have a masochistic streak in me OR I've got a lot of guts; probably half and half. "Who am I," you may ask? That's if you care. 'Tis Ye North London Branch I am with, funnily enough.

Believe it or not, it can be fun if you go to our socials and brewery trips. Those who are in our area who have never been don't know what they are missing, especially those who joined up at the London Drinker Beer Festival and whom we've seen neither hide nor hair of since. Those we have seen have been most welcome (One has been particularly welcome but I shan't say any more on that).

If this piece of prose (Others will call it by other names which are too rude and vulgar to print here.) ever sees the light of day, I appeal to those of you who join CAMRA during the Great British Beer Festival and happen to live in our area to turn up to at least one social. What have you to lose? You never know, you might like it. How will you recognise us, you may ask. It's not too hard; I'm the one who is young, dark, clean shaven and as yet doesn't have an enormous beer belly. I'll also wear a piece of CAMRA clothing. We also have a tall

slim guy with long hair and a beard. Another one is the same age, i.e. middle aged, but is shorter in hair length and height. He is also good at biting ankles (as in Norman Hunter). *[I thought you said you are young! - Ed.]* We also have a slim clean shaven Scottish member who has the same name as a certain large Scottish member of the National Executive. We also have in our humble branch no less than the Chairman of CAMRA and his spouse who is in charge of the Great British Beer Festival. If you'd like to meet (and grovel at) them then the best way is to go to our Branch Meetings.

If you are still with me at this point then I thank you for persevering. I look forward to meeting new faces, young, old and in between; male and female and especially those who live in the North West London postal areas.

Not only am I looking for new faces, but I'm also looking for fresh ideas for socials; suggestions for places to visit; support for other activities like competing against other branches or pubs in, say, darts, skittles or bar billiards. Or have a pub and curry night. If there is anything we aren't doing that you want to do then let me know. We look forward to hearing from you.

Aidan Kerrigan

---

## HERITAGE INNS LAUNCH NEW BOOKLET

Taylor Walker pubs and Nicholson's Free Houses have launched their new Heritage Inns booklet which is now available free of charge from selected pubs across the Capital.

This pocket sized, full colour Heritage Inns booklet contains details of eighteen of London's most historic and architecturally significant pubs including Williamsons Tavern off Bow Lane once the home of the Lord Mayor of London; The Old Bell Tavern which was built by the famous 17th century architect, Sir Christopher Wren and The Antelope in Eaton Terrace which was custom built for residents of the Terrace in 1780 and has two doors . . . one for the workers and the other for the gentry. Many distinguished customers have past through the doors including Oscar Wilde who no doubt "quipped whilst he quaffed".

The booklet also gives details of the history, opening times and availability of food and

specialities of the House.

The Heritage Inns scheme guarantees the future of some of the most classic and unspoilt pubs in London and the South East. Once a pub has been designated a Heritage Inn it receives a blue wall plaque and detailed historical background information for all customers to enjoy. Alterations to the structure and decor of a Heritage Inn can only be made with the full consent and agreement of all members of the Taylor Walker pubs and Nicholson's Freehouses Board of Directors.

As well as being a fascinating place to visit each pub is also renowned for its high standards of hospitality and of old fashioned service. Customers can choose from a range of traditional cask conditioned real ales as well as an extensive choice of wines, spirits and soft drinks. The menus offer at least one example of traditional home cooked English food.

---

## THE FIRKIN BREWERY ANNOUNCES WINNER OF THE 1992/93 CELLAR COMPETITION AWARDS AND LAUNCHES GOLDEN GLORY

Carl Flynn, manager of The Friar and Firkin, who has now moved on to manage the new Firkin pub - The Fulmar and Firkin in Holborn - has won this years prestigious 1992/93 Cellar Competition Award.

The awards scheme has been set up by the Firkin Brewery to ensure that their quality pub brewed ales for which they are renowned are dispensed in a way appropriate for top quality products.

All entrants were judged on their cleanliness, cellar procedures, stock rotation, quality control as well as the presentation of the product to their customers.

Carl wins a weekend in Paris for two in a top luxury hotel.

The occasion was also used to launch the new Firkin Beer - Golden Glory (4.6% ABV) which will be available immediately at all Firkin outlets until the end of the Summer.

Golden Glory is highly refreshing and light on the palate with a fruity aroma. Brewed on site at the Falcon and Firkin in Hackney,

Golden Glory will also be the official beer for this year's Beerjolais Run '93 in aid of the Spastics Society.



*The Firkin Launch of Golden Glory with Managers Charlie Cunningham, Goose & Firkin, Scott Faulkner, Fusilier & Firkin, Carl Flynn, Fulmar & Firkin.*

*Back row Murray Ray, Frog & Firkin, Tim Scarborough, Flower & Firkin and John McKeone manager Pheonix & Firkin.*

---

## THIRST QUENCHING SUMMER ALE IS LAUNCHED

The Whitbread Beer Company has created a new ale that it hopes will be the "ultimate summer thirst quencher" for cask ale drinkers everywhere.

Brewed at the Flowers Brewery at Cheltenham, it is a first for a major brewer because seasonal ales have traditionally only been available during the winter months.

The new arrival, Whitbread Summer Ale, is a light, refreshing golden beer brewed specially for drinking during warm weather.

"Summer Ale will assert ale's role as a refreshing summer drink", says Frazer Thompson, Marketing Manager, Ales, The Whitbread Beer Company.

"Traditionally, drinkers have tended to switch

from ale to lager during the summer. But the arrival of Summer Ale - the ultimate thirst quencher - will give also enthusiasts a summer option".

Summer Ale's special ingredient is Saaz hops from the Czech republic.

These light and fragrant hops, which also give Whitbread's Stella Artois premium lager its characteristic flavour, lend Summer Ale a light and particularly refreshing taste and a very flowery hop aroma. A 50% ale and 50% lager malt enhances its light, refreshing taste - not too bitter and with just a little "bite".

From a Whitbread Beer Company press release



---

## KINGSTON PUB CRAWL

Get off your bus at Fairfield Bus Station in Kingston and go back in the direction of the Fighting Cocks. Alternatively, if you have come by train, walk directly south from Kingston station until you get to the Bus Station and turn left. Go through the gap in the wall opposite the Fighting Cocks. Keep going straight, following the footpath across the park and then down the road almost opposite the footpath (Mill Street) just down this road on the right is the **Cocoonut**. This is a Fuller's pub with the full range of beers and is the London Region Pub of the Year. Watch out for Benjy the pub dog, who tends to bark at people leaving before closing time!

Retrace your steps down Mill Street and turn right at the end along Fairfield South. Just by the traffic lights is the **Newt & Ferret**. This pub is owned by Badger Inns and sells a varying range of guest beers as well as the obligatory Hall & Woodhouse range. It also sells beers from the Gribble Brewery which is owned by Hall & Woodhouse.

Turn right out of the pub and keep going straight across the traffic lights into Hawks Road. About two hundred yards on the left is the **Bricklayers Arms**. This habitual GBG entry sells the full range of Morlands beers, having been bought by that company last year. Food is available here and the portions are very generous. You may want to try the mixed grill challenge but, if you do, you probably won't have room for any more beer!

Retrace your steps from the pub and turn right just before the traffic lights. At the end of the road on your left is the **Flamingo** in London Road. This is a home brew pub which has previously been owned by Bruces (as the Flamingo and Firkin) and Clifton Inns. It is now owned by a small pub chain. The Fairfield Bitter at £1 a pint is the best bet. The pub can be a bit noisy; if rock music is to your taste you may want to stay a while, otherwise it could be a quick half and on.

Turn left out of the pub and right at the lights, up the side of the Lovekyn Chapel (Queen Elizabeth Road). Keep going straight under the railway bridge and turn left (Canbury Park Road). There you will see the **Canbury Arms** which sells Courage Best and Directors, John

Smiths and varying guest beers. This is one of the many Grand Met (ex-Courage) pubs in the area inherited from Hodgsons Kingston Brewery. Look for the right of way plaque outside. Ho Choys fish & chip shop opposite is highly recommended.

Turn right out of the pub (left from Ho Choys!) and continue down Canbury Park Road with the Court on your left and the Kingston University annex on your right (this building was the original Sopwith aircraft factory where the Sopwith Camel was made). At the end of the road turn right (Richmond Road) and a little way down on the right is the **Grey Horse**. This is a Youngs pub with the full range. The pub is famous locally for its live music which takes place in the rear room. There is normally an admission charge if you are tempted by what you hear, but you will miss some good pubs if you stay.

Retrace your steps from the pub until you come to a turning on the left (Cowlease Road) take this turning followed by the first road on the right. Carry straight on past the Norbiton Club on your left and turn left at the end of the club into Elm Road. After about ¼ mile you will find the **Wych Elm** on your left. This is another Fullers pub with the full range, usually in top condition. A previous Branch Pub of the Year it, unusually for Kingston, also retains a public bar. The Spanish licensee, Manuel, contributes to the lively atmosphere.

Take the road opposite the pub and take the second turning on the right (Florence Road). Don't worry, it's not a dead end, there is a footpath beside the flats at the end which you should take. At the end of the footpath turn right and you should see the **Willoughby Arms** in Willoughby Road, if not you're lost - and you won't be the first! The Willoughby is a Whitbread pub which sells Brakspears Special, plus West Country Pale Ale and Flowers Original if you really want them.

From the pub, head back in the direction you have come but continue to the end of the road. Turn left, then right at the end of this road. At the main road (Park Road), turn left then first right (New Road). On the left you will see the **Park Tavern**. This small free house sells

*Contd. on p. 37*

# REAL DRAUGHT BEER

## and where to find it in Young's pubs

### BALHAM, SW12

Duke of Devonshire,  
39 Balham High Rd  
Grove, 39 Oldridge Rd  
Nightingale, 97 Nightingale Lane

### BARKING, Essex

Britannia, 1 Church Rd

### BARNES, SW13

Bull's Head, 373 Lonsdale Rd  
Coach and Horses, 27 High St  
White Hart, The Terrace, Riverside

### BATTERSEA, SW11

Castle, 115 Battersea High St  
Duke of Cambridge,  
228 Battersea Bridge Rd

### BEDDINGTON, Surrey

Plough, Croydon Rd

### BETCHWORTH, Surrey

Dolphin, The Street

### BLOOMSBURY, WC1

Calthorpe Arms, 252 Gray's Inn Rd  
Lamb, 94 Lamb's Conduit St  
Three Cups, 21-22 Sandland St

### BOROUGH, SE1

Bunch of Grapes, 2 St Thomas St

### BOW, E3

Coburn Arms, 8 Coburn Rd

### BRIXTON

Hope and Anchor,  
123 Acre Lane, SW2

### TRINITY ARMS

45 Trinity Gardens, SW9

### CARSHALTON, Surrey

Greyhound, 2 High St

### CATFORD, SE6

Catford Ram, 9 Winslade Way

### CHELSEA

Chelsea Ram, Burnaby St, SW10  
Coopers' Arms, 87 Flood St, SW3  
King's Arms, 190 Fulham Rd, SW10

### CHELTSEY, Surrey

Crown, London St

### CHISLEHURST, Kent

Bull's Head, Royal Parade

### CHISWICK, W4

Crown and Anchor,  
374 Chiswick High Rd

### CITY OF LONDON

City Retreat, 74 Shoe Lane, EC4

Dirty Dick's, 202 Bishopsgate, EC2

### East India Arms

67 Fenchurch St, EC3

### Elephant, 119 Fenchurch St, EC3

### Lamb Tavern

Leadenhall Market, EC3

### Master Gunner

Cathedral Place, EC4

### Three Lords, The Minors, EC3

Wine Lodge, 145 Fenchurch St, EC3

### CLAPHAM COMMON, SW4

Olde Windmill, South Side

### CLAPHAM JUNCTION, SW11

Plough, 89 St John's Hill

### CLAPTON, E5

Prince of Wales, 146 Lea Bridge Rd

### CLAYGATE, Surrey

Foley Arms, Foley Rd

### CLERKENWELL, EC1

London Spa, 70 Exmouth Market

Sekford Arms, 34 Sekford St

### COVENT GARDEN, WC2

Marquess of Anglesey, 39 Bow St

### CROYDON, Surrey

Dog and Bull, 24 Surrey St

Gloucester, 111 White Horse Rd

Tamworth Arms, 62 Tamworth Rd

### DARTFORD, Kent

Malt Shovel, 3 Darenth Rd

### DORKING, Surrey

Old House at Home, 24 West St

### DULWICH, SE26

Dulwich Wood House,  
39 Sydenham Hill

### EAST DULWICH, SE22

Clock House, 196a Peckham Rye

### EAST SHEEN, SW14

Hare and Hounds,  
216 Upper Richmond Rd West

### EFFINGHAM, Surrey

Plough, Ornest Lane

### EPSOM, Surrey

King's Arms, 144 East St

### ESHER, Surrey

Bear, 71 High St

### ETON WICK, Berkshire

Pickwick, 32 Eton Wick Rd

### FTZBOVIA, W1

One Tun, 58 Goodge St

### FULHAM, SW6

Duke of Cumberland,  
235 New King's Rd

### GREENFORD, Middlesex

Bridge Hotel, Western Avenue

### GREENWICH, SE10

Richard I, 52-54 Royal Hill

### HAMMERSMITH, W6

Brook Green, 170 Shepherd's Bush Rd

Builders, 81 King St

Thatched House, 115 Dalling Rd

### HAMPSTEAD, NW3

Flask, 14 Flask Walk

Horse and Groom, 68 Heath St

### HARLESDEN, NW10

Grand Junction Arms, Acton Lane

### ISLEWORTH, Middlesex

Castle, 18 Upper Square

Coach and Horses, 183 London Rd

### ISLINGTON, N1

Marquess Tavern, 32 Canonbury St

### KENSINGTON

Britannia, 1 Allen St, W8

Britannia Tap, 150 Warwick Rd, W14

### KEW, Surrey

Coach and Horses, 8 Kew Green

### KILBURN, NW6

Queen's Arms, 1 High Rd

### KINGSTON-UPON-THAMES

Albert Arms, 57 Kingston Hill

Bishop Out of Residence,  
2 Bishops Hall, off Thames St

Grey Horse, 46 Richmond Rd

Spring Grove, 13 Bloomfield Rd

### LAMBETH, SW8

Plough, 518 Wandsworth Rd

Prince of Wales, 99 Union Rd

Surprise, 16 Southville

### LEE, SE12

Crown, 117 Burnt Ash Hill

### LOUGHBOROUGH JUNCTION, SE5

Wickwood Tavern, 58 Flaxman Rd

### MARYLEBONE, W1

Wargrave Arms, 42 Brendon St

### MAYFAIR, W1

Guinea, 30 Bruton Place

Windmill, 6-8 Mill St

### MERTON, SW19

King's Head, 18 High St

Prince of Wales, 98 Morden Rd

### MITCHAM, Surrey

Bull, 32 Church Rd

Cricketers, 340 London Rd

King's Arms, 260 London Rd

### MORTLAKE, SW14

Charlie Butler, 40 High St

Jolly Gardeners,  
36 Lower Richmond Rd

### NORWOOD

Hope, 49 High St, SE27

Railway Bell, 14 Cawnpore St, SE19

### NOTTING HILL, W11

Duke of Wellington,  
179 Portobello Rd

Hoop, 83-85 Notting Hill Gate

### OXFORD

Angel and Greyhound,  
30 St Clements St

King's Arms, 40 Holywell St

### OXSHOTT, Surrey

Bear, Leatherhead Rd

### PIMLICO, SW1

Morpeth Arms, 58 Millbank

Rising Sun, 46 Elbury Bridge Rd

### PLUMPTON GREEN, East Sussex

Fountain, Station Rd

### PRIMROSE HILL, NW1

Queens, 49 Regents Park Rd

### PUTNEY, SW15

Castle, 220 Putney Bridge Rd

Duke's Head, 8 Lower Richmond Rd

Green Man, Putney Heath

Half Moon, 33 Lower Richmond Rd

Spotted Horse, 122 Putney High St

### REDHILL, Surrey

Home Cottage, Redstone Hill

### REGENTS PARK, NW1

Spread Eagle, 141 Albert St

### RICHMOND-UPON-THAMES

Fox and Goose,  
327 Petersham Rd, Ham

Mitre, 20 St Mary's Grove

Old Ship, 3 King St

Orange Tree, 45 Kew Rd

Red Cow, 59 Sheen Rd

Shaftesbury Arms, 123 Kew Rd

Shakespeare, Lower Richmond Rd

Waterman's Arms, 12 Water Lane

White Cross, Riverside

### ROEHAMPTON, SW15

Angel, 11 High St

Maltese Cat, Aubyn Square

### ROTHERHITHE, SE16

Ship, 39-47 St Marychurch St

### SHERE, Surrey

Prince of Wales, Shere Lane

### SOUTHWARK, SE1

Founders' Arms,  
Bankside, 52 Hopton St

Prince William Henry,  
217 Blackfriars Rd

### STEPNEY

Hollands, 79 Exmouth St, E1

Queen's Head, 8 Flamborough St, E14

### STREATHAM, SW16

Bedford Park,  
223 Streatham High Rd

Pied Bull, 498 Streatham High Rd

### SURBITON, Surrey

Black Lion, 58 Brighton Rd

Victoria, 28 Victoria Rd

Waggon and Horses,  
1 Surbiton Hill Rd

### SUTTON, Surrey

Lord Nelson, 32 Lower Rd

New Town, 7 Land Rd

Robin Hood, 52 West St

### SYDENHAM, SE26

Bricklayers' Arms,  
189 Dartmouth Rd

### TEDDINGTON, Middlesex

Abercorn Arms, 76 Church Rd

Queen Dowager, 49 North Lane

### THORNTON HEATH, Surrey

Fountain Head, 114 Parkmore Rd

Lord Napier, 111 Beulah Rd

Railway Telegraph, 19 Hingstock Rd

### TOOTING, SW17

Castle, 38 High St

Gorrings Park, 29 London Rd

Leather Bottle, 538 Garratt Lane

Prince of Wales, 646 Garratt Lane

### TWICKENHAM, Middlesex

Old Anchor, 71 Church St

Pope's Grotto, Cross Deep

### WALTON-ON-THAMES, Surrey

Royal George, 130 Hershaw Rd

Swan, 50 Manor Rd

### WALTON-ON-THE-HILL, Surrey

Chequers, Chequers Lane

### WALLINGTON, Surrey

Duke's Head, 6 Manor Rd

### WANDSWORTH, SW18

Brewery Tap, 68 Wandsworth High St

County Arms, 345 Trinity Rd

Crane, 14 Armoory Way

Gardeners' Arms, 268 Merton Rd

Grapes, 39 Fairfield Rd

Halfway House, 521 Garratt Lane

King's Arms, 96 Wandsworth High St

Old Sergeant, 104 Garratt Lane

Pig and Whistle, 451 Merton Rd

Queen Adelaide, 35 Putney Bridge Rd

Ship, 41 Jew's Row

Spread Eagle,  
71 Wandsworth High St

Two Brewers, 147 East Hill

Wheatheaf, 30 Putney Bridge Rd

### WESTMINSTER, SW1

Buckingham Arms, 62 Petty France

Royal Oak, 1 Regency St

### WIMBLEDON, SW19

Alexandra, 33 Wimbledon Hill Rd

Five Crooked Bilet, 15 Crooked Bilet

Dog and Fox, 24 High St

Hand in Hand, 6 Crooked Bilet

Rose and Crown, 55 High St



## NOTHING'S AS SPECIAL AS YOUNG'S



---

## SHEPHERD NEAME LAUNCH SPITFIRE BOTTLE CONDITIONED PREMIUM BITTER

Shepherd Neame, Britain's Oldest Brewers, recently launched a new beer to add to their highly successful range of premium ales in half litre bottles.

Spitfire Bottle Conditioned Premium Bitter is aimed at the niche speciality beer market in both on- and off-trades.

Brewed at Shepherd Neame's Faversham, Kent brewery - where a brewhouse was chronicled as early as 1630 - Spitfire Bottle Conditioned Premium Bitter is 4.7% abv, naturally fermented, and contains a level of residual yeast in the bottom of the bottle, which means that the beer should be poured with care.

Launching Spitfire Bottle Conditioned Premium Bitter at a press conference held at the Bishops Finger, West Smithfield, London EC2 - one of the brewery's 370 southeastern pubs - Shepherd Neame chairman Robert Neame said: "In essence, it is cask-conditioned ale in a bottle.

"Spitfire Bottle Conditioned Premium Bitter is, we believe, the answer for those consumers who want a naturally fermented ale, presented in our individual style, sensibly priced and - above all - with a distinctive, hoppy taste which has for centuries typified Shepherd Neame beers."

Spitfire Bottle Conditioned Premium Bitter has been given a superb presentation in Shepherd Neame's impressive and unique half litre bottle, dressed with neck foil, and rich gold, red and blue label.

With immediate effect, Spitfire Bottle Conditioned Premium Bitter will be made available to Shepherd Neame's own pubs, and to wholesalers and distributors for sale to free on-trade outlets nationwide.

In addition, the brewery's take-home sales team have embarked on a programme of introducing the new brand to buyers of specialist off-licence chains and supermarkets ... and already Safeway have agreed to list the beer in 100 of their southern stores.

The basic trade price of Spitfire Bottle Conditioned Premium Bitter is £10.20 per

dozen, ex-VAT.

Shepherd Neame believe the beer will retail at around £1.43 in the off-trade, giving a gross profit margin of 30%, and at about £1.82 in pubs, clubs and other on-trade outlets, yielding 45% gross profit.

Spitfire Bottle Conditioned Premium Bitter is the fourth beer to be packaged in half litre bottles by Shepherd Neame, following the successful launch of Bishops Finger Kentish Strong Ale, Master Brew Premium Bitter and Original Porter in the past seven months.

---

*Views expressed in this publication are those of their individual authors, and are not necessarily endorsed by the Editorial team or the Campaign for Real Ale Limited*

---

---

### FORTHCOMING FESTIVALS

<b>Aug 3-7</b>	Great British Beer Festival Grand Hall, Olympia
<b>Aug 20-21</b>	Portsmouth
<b>Aug 27-30</b>	Eurobeer Festival Esplanade, Rochester, Kent
<b>Sept 8-11</b>	7th Chappel East Anglian Railway Museum Chappel & Wakes Colne Station
<b>Sept 11</b>	Maidstone Cobtree Museum of Kent Rural Life Sandling
<b>Sept 14-18</b>	11th Ipswich Corn Exchange
<b>Sept 16-18</b>	Milton Keynes Madcap Theatre Wolverhampton
<b>Sept 17-18</b>	North Herts Letchworth

# THE WHITE HART

## FREE HOUSE

70 High Street · Hampton · Middlesex

*Telephone: 081 979 5352*

★ ★ ★ ★

**IS NOT HAVING A BEER FESTIVAL!!**

**\*\* NO KARAOKE \*\***

**\*\* NO POOL TABLES \*\***

**\*\* NO MUSIC \*\***

**\*\* NO GIMMICKS \*\***

★ ★ ★ ★

We are an established **TRUE** Free House  
serving from a selection of well over  
100 Traditional Ales from 8 handpumps  
in a warm and inviting atmosphere

**\*\* LUNCH SERVED 7 DAYS A WEEK \*\***

**\*\* LARGE COMFORTABLE PATIO AREA \*\***

**\*\* FUNCTION ROOM FOR HIRE \*\***

**\*\* LOG FIRE IN THE WINTER \*\***

★ ★ ★ ★

5 minutes from Hampton B.R. Station

Buses: 267, R68, 111, 726, 216



---

## SOCIETY FOR THE PRESERVATION OF BEERS FROM THE WOOD (SPBW)

There may be quite a few among you who have come across the SPBW at some time or other. Some of you may even be members of this fine body. However, for those unfortunates who are not familiar with the Society I hope (LD editors willing!) we can put this right in forthcoming issues.

First of all, a lightning history. The SPBW was founded in December 1963 by seven disgruntled beer drinkers who were somewhat concerned that their favourite, traditional, brews were being replaced by inferior beers served from 'sealed dustbins', this being the era when keg beers were raising their ugly, unpalatable heads. Thirty years ago wooden casks were synonymous with traditional beer, as opposed to keg from metal dustbins, hence the name. Within a few years, metal casks had become increasingly used for real draught beer and the founders relaxed their principles accordingly. This decision, incidentally, did not go down at all well with some of the more militant members in Wiltshire who considered that only beer drawn straight from a wooden cask could be regarded as ideologically sound. Since we are no longer exclusively concerned with wooden casks the Society's name is somewhat misleading these days but, for the sake of tradition, we're sticking with it. Basically we are more concerned with the contents than the container.

Nowadays we have several hundred members throughout Britain as well as 13 affiliated branches, 8 of which are based in the Greater London area. All branches are totally autonomous and organise themselves, and their activities, as they see fit. The SPBW generally is run by a National Executive Committee which issues a quarterly magazine to its members and organises a 'National Weekend' to areas of interest which have breweries to visit and fine beers and pubs to sample - Burton, Norwich and Devizes were the last three venues.

Now that you have a thorough background knowledge of the SPBW, let me introduce

you to one of its branches, of which I am a member. Like many of the Society's branches its name - Wantz - is no obvious clue to its whereabouts. According to branch legend, Wantz is an ancient name for part of South-West Essex and the branch actually began its life in Rainham (not Kent) in 1974. Since then it has moved base to Romford (at the late, lamented Royal Oak), back to Rainham and is now happily settled in Barking where we meet, on the third Monday of each month, at the Britannia in Church Street. The Britannia is of course a Youngs pub known to John Young as the 'titty house' because of the caryatids on the outside walls (pause while you all look in a dictionary). Our meetings, it has to be said, are a trifle informal although we do work to an agenda of sorts. The Chairman attempts to keep the hoi polloi in order by administering swingeing fines for misbehaviour, which explains our healthy bank balance. Funds are ploughed back into our various activities, the major one of which is running a stand at the Dagenham Town Show each July. This largely involves quaffing generous quantities of ale, kindly supplied by a friendly London brewery in return for some promotional work and a donation to a charity of its choice. At the same time we attempt to chat up innocent members of the public and even offer them a small sample of our beer in return for a donation. We have even managed to recruit a few members in this way. Apart from this we have the odd visit to a brewery and an occasional weekend away - we visited Leeds earlier this year for example. It's all good fun and if you want to know more about the branch please ring Roger on 081 980 9093 outside working hours.

If you want to know more about the SPBW generally, please send an s.a.c. to the SPBW National Membership Secretary, 1 Montreal Road, Ilford IG2 4AF. Alternatively, if you are reading this at the GBBF, visit our stand and our highly trained staff will be pleased to tell you all about it.

---

## BRANCH DIARY

If your branch is not mentioned below, please ring the branch contact. Dates for August of which we have been notified are given below. Branches please send information to Andy Pirson. Branch contacts page 29.

**LONDON PUBS GROUP:** Mon 2 (7.30) Pub Crawl for Great British Beer Festival. Start at ORANGE BREWERY, SW1 - Wed 1 Sep (8.00) Business Meeting. GRAPES, SE1 - Mon 27 (8.00) North London Crawl. Start QUEENS, Crouch End Broadway, N8. Further details from Roger Sedgley.

**CROYDON & SUTTON:** Tue 10 (8.30) New Members' Social. PORTER & SORTER, East side of East Croydon Station - Mon 16 New Members' Social. WHISPERING MOON, Ross Parade, Wallington - Fri 20 (19.24 train from E. Croydon) Horsham Ramble. Start STOUT HOUSE, Carfax then BEAR; TANNERS ARMS; BEDFORD. Return train 22.46 - Wed 25 (8.30) Branch Meeting. DOG & BULL, Surrey Street, Croydon - Tue 31 (8.30) New Members' Social. NEW TOWN, Lind Road, Sutton (meet in public bar).

**EAST LONDON & CITY:** Mon 2 (8.00) Branch Meeting. WHITE BEAR, St John Street, EC1 - Wed 11 (6.00) Social. YE OLDE CHESHIRE CHEESE, Fleet Street, EC4 - Mon 16 (8.00) Pigs Ear Festival Meeting. PRINCE OF WALES, Lea Bridge Road, E5 - Thu 26 (6.00) Two Pub Social. CAT & CANARY then WATERFRONT (7.30), both in Docklands - Mon 6 Sep (8.00) Branch Meeting. DENMARK ARMS, 381 Barking Road, E6

**ENFIELD & BARNET:** Sun 8 (1.00) Cricket Watching. Southgate Cricket Club, Walker Ground, Waterfall Road - Wed 11 (8.30) Branch Meeting. BULL & BUTCHER, 1277 High Road, N20 - Wed 18 (8.00) Annual Barbecue. GREEN DRAGON, 889 Green Lanes, N21 - Thu 26 (9.00) Social & London Drinker Pick-up. BANKERS DRAFT, 36-38 Friern Barnet Road, N11 - Wed 1 Sep (9.00) Social. WELCH BROS, 130 High Road, N2.

**KINGSTON & LEATHERHEAD:** Thu 12 (8.30) Business Meeting. THE HINCHLEY WOOD, Hinchley Wood - Mon 16 (8.00) Pub Crawl of Dorking with Reigate & Redhill Branch. Start at BUSH, Horsham Road

**NORTH LONDON:** Thu 12 (8.00) Two Pub Social. QUEENS ARMS, 1 Kilburn High Road, NW6 (Kilburn High Road BR, Kilburn Park LT) then BEATEN DOCKET (9.30), Cricklewood Broadway (bus 16/16A/32 from Queens Arms) - Tue 17 (8.00) Hertfordshire Trip by Minibus. Meet outside Wood Green Tube by Do-it-All. Contact Gary White for details on 081-801 9513 (after 6.00pm) - Thu 24 (8.00) Social & London Drinker Pick-up. LORD NELSON, 42 Stanhope Street, NW1 (off Drummond Street west of Hampstead Road; Warren Street Tube & Euston BR) - Tue 31 (7.30) Open Committee/Branch Meeting. THREE CUPS, Sandland Street, WC1 (Holborn Tube). Committee Meeting in bar followed by Branch Meeting at 8.00 in function room - Tue 7 Sep Two Pub Social. ADMIRAL MANN, 7 Hargrave Place, N7 (29 or 253 bus from Camden Town Tube or Camden Road BR) then PINEAPPLE, 51 Leverton Street, NW5 (Kentish Town Tube & BR)

**RICHMOND & HOUNSLOW:** Mon 2 (8.30) Committee Meeting. BRIDGE INN, 457 London Road, Isleworth - Mon 16 (8.30) Branch Meeting. LORD CLYDE, 77 Inwood Road, Hounslow - Thu 26 (8.30) Social. BREWERY TAP, 47 Catherine Wheel Road, Brentford - Tue 31 (8.30) Committee Meeting. Venue to be arranged; call Branch Contact.

**SOUTH EAST LONDON:** Thu 19 Jul (8.00) Boules Social. DULWICH WOOD HOUSE, 39 Sydenham Hill, SE26 - Mon 9 (8.00) Branch/Committee Meeting. GREYHOUND, 315 Kirkdale, SE26 - Thu 26 (8.00) Branch Social. CRYSTAL PALACE TAVERN, 105 Tanners Hill, SE8.

**SOUTH WEST ESSEX:** Wed 4 (8.30) Social. ROSE, Chelmsford Road (A1023), Shenfield - Tue 10 (8.30) Darts Vs S.E. Essex Branch. CORK & CHEESE, 365 Chartwell Square, Victoria Circus, Southend on Sea - Sat 14 (3.00 at pub) Out of Area Social. KINGS HEAD, 188 Wycombe Road (A4128), Prestwood. Coach arranged; details/bookings Wendy Benson on Romford 723897. NOTE



**CHANGEDDATE** - Wed 18 (8.30) Social. **PRINCE OF WALES**, Roman Road (B1002), Mountnessing - Tue 24 (8.30) Social. **FOXHOUND**, 18 High Road (B188), Orsett - Thu 2 Sep (8.30) Social. **BELL INN** High Road (near B1007), Horndon on the Hill.

**SOUTH WEST LONDON:** Tue 3 (8.00) Social at Great British Beer Festival. Meet at Barnsley Brewery Bar - Sun 5 Sep Cricket Vs Priory Arms, SW8. Potential players please contact Alan Millington on 081-646 5925. Further details next month.

**WATFORD & DISTRICT:** Fri 6 Social at the Great British Beer Festival. Meet 6.00, 7.00 & 8.00 at the first Cider & Perry Stall - Weekend 13-15 Branch Trip to the West Country - Sun 22 (12.00) Sarrett Social. Meet at **TWO BRIDGES** then **CRICKETERS** (12.40); **BOOT** (2.00) - Tue 31 (8.30) Kings Langley Social. **OLD PALACE** then **SWAN** (9.15); **SARACEN** (10.00).

**WEST LONDON:** Thu 24 (8.00) Branch Meeting. **BEEHIVE**, Homer Street, W1 - Wed 11 (8.00) Post Great British Beer Festival Social. **RADNOR ARMS** then **WARWICK ARMS** (9.00); **BRITANNIA TAP** (10.00), all Warwick Road, W14.

**WEST MIDDLESEX:** Tue 3 to Sat 7 Great British Beer Festival. Be there! - Thu 12 (8.30) Social. **J J MOONS**, 20 The Broadwalk, North Harrow. Surprise beer! - Wed 18 (8.30) Branch Meeting. **TURKS HEAD**, Harlington Rd., Hillingdon - Sat 21 (2.00) Hop Back Brewery Trip. Phone for details - Thu 26 (8.30) Social & London Drinker Pick-up. **WHEATSHEAF**, 41 Haven Lane, Ealing, W5.

Deadline for the September edition, 2nd August. Material for October edition to arrive by 1st September. **Please be sure to send all diary material to Andy Pirson.**

**LONDON DRINKER** is published by the London Branches of CAMRA, the Campaign for Real Ale Limited. Editors: Chris Cobbold, 25 Valens House, Upper Tulse Hill, London SW2 2RX. Tel: (081) 674 0556. Andy Pirson, 13 Belvedere Close, Teddington, Middlesex, TW11 0NT. (081) 943 5344. Ian Amy, 89 Woodfield Road, Thames Ditton, Surrey KT7 0DS.

**SUBSCRIPTION:** (£7.00) for 1 year) should be sent to: Stan Tomkins, 122 Manor Way, Uxbridge, Middlesex.

**ADVERTISING:** Barry Tillbrook. Tel: (081) 989 7523 (after 7 pm).

Deadline for the September edition, 1st August. Material for October edition to arrive by 1st September.

**Please be sure to send diary material to Andy Pirson.**

Printed by Dasprint Limited, 53 Lydden Grove, Wandsworth, London SW18 4LW

---

## APPLICATION FOR CAMRA MEMBERSHIP

I/We wish to join the Campaign for Real Ale Limited, and agree to abide by the Memorandum and Articles of Association of the Campaign.

NAME(S) \_\_\_\_\_ DATE \_\_\_\_\_

ADDRESS \_\_\_\_\_

POSTCODE \_\_\_\_\_

SIGNATURE \_\_\_\_\_ TELEPHONE NUMBER(S) \_\_\_\_\_

I/We enclose remittance for individual/joint membership for one year: U.K. £10 ☐

I/We would like to receive further information about CAMRA ☐ Overseas £14 ☐

Please send your remittance (payable to CAMRA Limited) with this application form to:

**THE MEMBERSHIP SECRETARY, CAMRA LTD, 34 ALMA ROAD, ST ALBANS, HERTS AL1 3BW**

---

## Existing Establishments

**STROUD GREEN**  
**WHITE LION OF MORTIMER**  
125/127 Stroud Green Road  
N4

**HARINGLEY**  
**OLD SUFFOLK PUNCH**  
10-12 Grand Parade N4

**TURNPIKE LANE**  
**THE TOLLGATE**  
26-30 Turnpike Lane N8

**STOKE NEWINGTON**  
**THE TANNERS HALL**  
145 High Street N16

**WOOD GREEN/TOTTENHAM**  
**THE NEW MOON**  
413 Lordship Lane N17

**TOTTENHAM**  
**THE ELBOW ROOM**  
503-505 High Road N17

**ARCHWAY**  
**THE DOG**  
17/19 Archway Road N19

**KINGSBURY**  
**J J MOON'S**  
551 Kingsbury Road NW7

**WEST HENDON**  
**THE WHITE LION OF MORTIMER**  
3 York Parade  
West Hendon Broadway  
London NW9

**WALTHAMSTOW**  
**THE DRUM**  
557/9 Lea Bridge Road E110

**BARNET**  
**THE MOON UNDER WATER**  
148 High Street Barnet

**ENFIELD**  
**THE MOON UNDER WATER**  
115/117 Chase Side Enfield

**NEASDEN**  
**THE OUTSIDE INN**  
312-314 Neasden Lane  
NW10

**SOUTH HARROW**  
**J J MOON'S**  
3 Shatteshbury Parade  
Shatteshbury Circle  
South Harrow

**EAST BARNET**  
**THE RAILWAY BELL**  
13 East Barnet Road  
East Barnet

**CHALK FARM**  
**THE MAN IN THE MOON**  
40-42 Chalk Farm Road  
NW1

**HAMPSTEAD**  
**THE THREE HORSESHOES**  
28 Heath Street,  
Hampstead, NW3

**WEALDSTONE**  
**THE SARSEN STONE**  
32 High Street, Wealdstone,  
Middlesex

**FOREST HILL**  
**THE BIRD IN HAND**  
Dartmouth Road,  
Forest Hill, SE22

**WANSTEAD**  
**THE GEORGE**  
High Street, Wanstead, E11

**HAYES**  
**THE MOON UNDER WATER**  
10/11 Broadway Parade,  
Coldharbour Lane, Middlesex

**LEICESTER SQUARE**  
**THE MOON UNDER WATER**  
28 Leicester Square, WC2

**HEATHROW**  
**J J MOON'S**  
Terminal Four  
(Airside)

**HEATHROW**  
**WETHERSPOONS**  
Terminal Four  
(Landside)

**CROYDON**  
**THE GEORGE**  
17-20 George Street  
Croydon, Surrey

**EAST HAM**  
**THE MILLER'S WELL**  
419-421 Barking Road  
East Ham, E6

**BRIXTON**  
**THE BEEHIVE**  
407-409 Brixton Road, SW2

**VICTORIA**  
**WETHERSPOONS**  
Victoria Station, SW1

**WALLINGTON**  
**THE WHISPERING MOON**  
25 Ross Parade, Woodcote Road,  
Wallington, Surrey

**NEW SOUTHCATE**  
**THE BANKER'S DRAFT**  
36-38 Friern Barnet Road,  
New Southgate N11

**HARROW**  
**THE VILLAGE INN**  
402-408 Rayners Lane,  
Harrow, Middlesex

**EDMONTON**  
**THE LAMB**  
52-54 Church Street,  
Edmonton, N9

**ISLINGTON**  
**179 UPPER STREET**  
178-179 Upper Street N1

**STREATHAM**  
**J J MOON'S**  
2 Streatham Hill SW2

**SHEPHERD'S BUSH**  
**THE MOON ON THE GREEN**  
172-174 Uxbridge Road  
Shepherd's Bush W12

**PALMERS GREEN**  
**THE WHOLE HOG**  
410-434 Green Lanes  
Palmer's Green N13

**COUNDALE**  
**THE MOON UNDER WATER**  
10 Varley Parade  
Coundale NW9

**RUSHPUR MANOR**  
**J J MOON'S**  
12 Victoria Road  
Rushpur Manor

**MITCHEM**  
**THE WHITE LION OF MORTIMER**  
223 London Road  
Mite ham

**WIMBLEY**  
**J J MOON'S**  
397 High Road  
Wembley

**TOOTING**  
**J J MOON'S**  
56a High Street  
Tooting SW17

**NORTH LITTLE FLY**  
**THE TALLY HO**  
High Road, North Little fly  
London N12

**HOUNSLOW**  
**THE MOON UNDER WATER**  
84-86 Staines Road,  
Hounslow, Middlesex

**CROUCHEND**  
**THE ELBOW ROOM**  
22 Topsfield Parade  
Tottenham Lane  
London N8

**HARROW**  
**THE MOON ON THE HILL**  
373-375 Station Road  
Harrow, Middlesex

**HATCH END**  
**THE MOON AND SIXPENCE**  
250 Uxbridge Road, Hatch End

**WINDHAMORE HILL**  
**HALF MOON**  
749 Green Lanes, Windhamore Hill  
London N21

**KENTON**  
**THE NEW MOON**  
25-26 Kenton Park Parade  
Kenton Road, Kenton, Middlex

**CATFORD**  
**THE TIGER'S HEAD**  
Bromley Road, Catford, SE6

**CRICKLEWOOD**  
**THE BEATEN DOCKET**  
50-56 Cricklewood Broadway NW2

**LIVERPOOL STREET**  
**HAMILTON HALL**  
Liverpool Street Station EC2

**BARKINGSIDE**  
**THE NEW FAIRLOP OAK**  
Fencepiece Road, Barkingside

**TWICKENHAM**  
**THE MOON UNDER WATER**  
53-57 London Road  
Twickenham

**BETHNAL GREEN**  
**THE CAMDEN'S HEAD**  
456 Bethnal Green Road, E2

## NOW OPEN

**The Coliseum**  
Manor Park Road, Harlesden, NW10

**The Moon under Water**  
194 High Street, Balham SW12

**The Sylvan Moon**  
27 Green Lane, Northwood, Middlesex

**The Moon Under Water**  
1377 London Road, Norbury SW16

**The Bankers Draft**  
80 High Street, Eltham

**The Blacking Bottle**  
122-126 High Street, Edgware

**The Old Manor**  
Church Road, Bracknell, Berkshire

**The Man in the Moon**  
1 Buckingham Parade, Stanmore, Middlesex

**The Gate House**  
North Road, Highgate N6

## OPENING SOON

46-62 High Street, Hornchurch

**The Spotted Dog**  
Garratt Lane, Arndale Centre, Wandsworth

61 Station Parade, Barking

8-9 Russell Hill Road, Purley, Surrey

5-9 Hill Road, Sutton, Surrey





---

## McMULLEN SPECIAL RESERVE SECOND LIMITED EDITION SEASONAL PREMIUM ALE IS LAUNCHED

### Fine Summer Bitter is a taste of by-gone days

McMullen have announced the second in the series of McMullen Special Reserve cask conditioned premium ales - Fine Summer Bitter - which will be available in around 80 selected McMullen pubs and free trade outlets for a limited period.

The launch of Fine Summer Bitter follows the success in April of Traditional IPA, the first McMullen Special Reserve ale for which there was tremendous demand following its favourable reception by customers, the media and CAMRA.

Traditional IPA and Fine Summer Bitter join a long line of distinctive and historic ales, such as Original AK, which have been produced by McMullen since 1827 for those who appreciate the values of brewing quality and craftsmanship.

For Fine Summer Bitter, the Head Brewer has chosen a simple uncomplicated McMullen recipe. It recaptures the taste of the cool refreshing pints of bitter ale supped in McMullen country pubs in the early part of the century by Londoners escaping the oppressive summer heat of the capital.

All McMullen products contain the highest quality natural ingredients and Fine Summer

Bitter is no exception. A pale malt from a Hertfordshire maltster has been used with the finest whole leaf East Kent Golding hops and McMullen's particular strain of ale yeast. Fermentation takes place in the copper-lined oak vats in McMullen's Victorian brewhouse at Hertford.

The resultant Fine Summer Bitter has an ABV (alcohol by volume) of 4.2 per cent. It is light in colour, has a fresh taste, a hint of flowery aroma hops and the smoothness of an all malt brew.

John McMullen, Chairman, said that the outstanding success of Traditional IPA, the first of the McMullen Special Reserve limited edition premium ales, had shown that the number of discerning drinkers was on the increase.

"There is obviously a growing demand for specialist cask ales from the craft of the independent family brewer, such as McMullen, and I am sure that those who appreciated Traditional IPA so much will find our Fine Summer Bitter just as enjoyable in the coming summer weeks," he said. From McMullen press release

---

## BRANCH CONTACTS

LONDON PUBS GROUP .....	ROGER SEDGLEY .....	(081) 691 2915 (H) (081) 853 2699 (W)
	ANDREW PADGHAM ..	(081) 693 6181
BROMLEY .....	DAVE FOORD .....	0689 54798 (H)
CROYDON & SUTTON .....	ANDY GRAY .....	(071) 706 0877 x 232 (W)
EAST LONDON & CITY .....	ROY JENNER .....	(081) 806 7605 (H) 0245 226511 (W)
ENFIELD & BARNET .....	DENNIS O'ROURKE ....	(071) 430 5269 (W)
KINGSTON & LEATHERHEAD ....	ALLAN MARSHALL ....	(081) 942 9115 (H) (071) 918 3376 (W)
NORTH LONDON .....	ALISON COX .....	(081) 740 6451 (H) (081) 746 8148 (W)
RICHMOND & HOUNSLOW .....	DOUG SCOTT .....	(081) 560 8503 (H)
SOUTH WEST ESSEX .....	ANDREW CLIFTON .....	Romford (0708) 765150 (H)
SOUTH EAST LONDON .....	ERIC MARTIN .....	(071) 973 3274 (W)
SOUTH WEST LONDON .....	MARTIN BUTLER .....	(081) 542 3158 (H) (081) 862 6178 (W)
WATFORD & DISTRICT .....	MICHAEL BIRCH .....	0923 773913 (H)
WEST LONDON .....	ROBERT McGOWAN ...	(071) 242 0262 x 2228 (W)
WEST MIDDLESEX .....	ALEX KOVAC .....	(081) 868 2540 (H) 0895 238592 (W)

---

---

## HARRY STAINES

### CHAPTER 3

*The story so far:*

*Nigel is beginning to feel drawn ever deeper into Sven's world of lager drinking and page 69 activities. Will he fall over the precipice?*

Nigel knew that he was at the critical point. It was time to choose and his next drink order would make the choice for him. It was either the robust well hopped Webster's (CBOB 1988, 1989 and 1991) or another bottle of Mexican lager and the consequent commitment to Sven.....

As Nigel finished his bottle of lager, Sven lost no time in putting to Nigel what both men knew was the crucial question.

"Another drink Nigel?" asked the Dane.

It is a truth universally acknowledged that to drink one lager is unfortunate, and to drink two careless. But to have *three* means that you have to be a confirmed lager drinker. Nigel thought long and hard about his answer, conscious of the smile (oh, that smile!) on Sven's lime-scented lips.

"Can I have a pint of bitter please?" Nigel eventually stammered.

He saw Sven's gentle smile metamorphose into an expression of intense pain and anguish. "Nigel..." whispered the Dane, "Why?"

"Please Sven; this isn't easy for me, but it has to be the way. I can't go back."

"But Nigel...."

"No Sven," said Nigel, choking off the Dane before he could finish the sentence. "Don't make it any more difficult than it is already."

Sven stared at Nigel for a few seconds, although to Nigel it seemed an eternity. Then, without another word, he drained his bottle of Cerveza Viva Zapata, and left. He didn't look back.

Nigel felt close to tears. Had he done the right thing? Deep down, would he not have preferred to go back to life with Sven as a lager drinker? Okay, so lager tasted like fizzy diluted gnat's water, and lager drinkers were a pretty low form of life. They were the sort of people who lived in places like Basildon, dressed in shell suits, were called Tel, Kevin or Wayne and had wives called Sharon or Tracey. They read

"The Sun" and believed what they read. They hung fluffy dice in the backs of their cars and put stickers with their names on the windscreen. They thought a gourmet meal was a Big Mac and heavy culture (not to be indulged in too often, especially if you were saving up for a trip to Euro Disney) was a night at the latest piece of plagiaristic tat from Andrew Lloyd Webber. Some of them even supported the England football team *and expected them to win!* It was for lager drinkers that the noble English game of cricket had been reduced to a 50 overs slog between teams who looked like a bunch of rent boys dressed in coloured pyjamas. Decent people would spit on such specimens were it not for the conventions of civilised behaviour and the fact that it was only the sort of person who drank lager who would go round spitting on people anyway. In any case, Nigel was a real ale drinker, and committed CAMRA activist. He could not betray his allegiance to CAMRA's ruling elite, the first family of real ale - the House of Crynge.

And yet he had been a lager drinker once, and had not been unhappy to be so. He had in a sense been proud to be one of those people on the fringe of society; termed loser and lowlife by the cosy majority; he had taken a perverse pleasure in being an outcast, somebody different. He recognised of course that it had been the element of defiance that attracted him - the thrill of laughing in the face of good sense and good taste and paying £4.50 a pint for the privilege. But, above all, if he went back to lager drinking he would be going back to Sven.

Nigel stayed until closing time. He had several more pints of Webster's, although he had no appreciation for the richness of the beer, with its delicate notes of fenuGreek, garam masala and basil in the long lingering finish. The beer served only one purpose - to blank out the mental anguish.

At closing time, Nigel stumbled out into the street and began to stagger homewards. As he made his way down the darkened streets he was still hurting inside. Suddenly a car screeched to a halt beside him and two balaclavaed figures grabbed him by the arms. Before he had time even to cry out he was



bundled into the back seat, gagged and blindfolded, and thrown onto the floor. A handkerchief soaked in some sweet smelling liquid was pressed to his nose and mouth. He passed out.

Nigel awoke with a start. He was lying naked on a bed in a dimly lit room. When he moved to get up he realised that he was immobilised; his arms and legs were chained to the heavy iron bedstead.

"I'm sorry it had to be like this Nigel, but you left me no choice." Nigel recognised Sven's voice.

"Stop this Sven. Please release me; let me go. I don't drink lager any more."

"No Nigel," replied Sven. "You must stop this silly resistance and give in to your real feelings."

The Dane had with him several empty Cerveza dos Gulcheros Gobbiglieros bottles, each with its piece of lime still in the neck. He took the pieces of lime and mashed them into a pulp, adding the dregs in the bottles to make a paste. It was with almost a sigh of relief that Nigel greeted Sven, when the Dane took some of the fragrant paste and began to smear it over.... (continued . . .).

## THEY'RE OFF AT THE GREYHOUND!!

The Greyhound pub, 315 Kirkdale, Sydenham is now back on track after a £600,000 refurbishment programme which has completely transformed and enlarged this traditional Victorian pub.

The transformation was completed after close and detailed liaison between Taylor Walker, London a pub company with over 500 outlets throughout the Capital and the Sydenham Conservation Committee who between them ensured that this historic building with its traditional features is preserved for future generations to enjoy.

The first mention of the pub dates back to 1740 when it is described in the Lewisham Church Register and some original features can still be seen today. These include the awe inspiring and magnificent mahogany bar with twisted brass poles and 18th century decorated glass as well as an awesome array of Victorian tiles at the original entrance of the pub.

The pub now boasts two reception rooms as well as an extended bar area and totally redesigned kitchen. The first reception room has its own private bar and space for up to 120 customers and the second can cater for up to 70/80 people. Both rooms are ideal for business meetings, wedding receptions, christenings and all kinds of family occasions.

The redesigned kitchen now serves a full menu from 12.00 to 9.00 pm six days a week and traditional Sunday lunch. As well as full standard menu the pub serves a range of specials including chicken kiev, cottage pie and lasagne.

On the drinks side the pub has four permanent cask conditioned ales including its very own Greyhound Ale, as well as Tetley Bitter, Draught Burton Ale and Youngs with two different guest beers from around the country each month. During the month of August the pub will be hosting an extensive beer festival with up to twelve different beers available from around the country.



*At the re-opening of the Greyhound - Left to Right: Jim Traynor, Area Manager of Taylor Walker, Licensees Paul Armer & Kate Henderson with David Longbottom, Managing Director of Taylor Walker.*

Licensee Paul Armer said "We have only been at the pub for four months but it is an incredible relief that the refurbishment has now been finished and we are absolutely delighted with the result. Out of the 22 pubs in Sydenham we are in absolutely no doubt whatsoever that we are not only the biggest pub, offering the most facilities but also the best!"



*Are proud to announce  
their latest selection of Guest Ales*

<b>Felinfoel Double Dragon</b>	<b>5.0% ABV</b>
<b>Charles Wells Eagle IPA</b>	<b>3.5% ABV</b>
<b>Fuller Smith &amp; Turner London Pride</b>	<b>4.1% ABV</b>
<b>Jennings Bitter</b>	<b>3.4% ABV</b>
<b>Adnams Broadside</b>	<b>4.4% ABV</b>
<b>Everards Tiger</b>	<b>4.2% ABV</b>
<b>Hook Norton Bitter</b>	<b>3.6% ABV</b>

*Come and visit your local Nicholson's for full details*



**THE BEST IN LONDON PUBS**



---

## **An Open Letter to Tenants and Leaseholders of National Brewers, and Free-Trade Customers tied by Loan to a National Brewer.**

### **Re: Guest Beers**

You are entitled to buy one brand of cask conditioned beer (real ale) from whoever you wish. This is in addition to any beers supplied by your landlord brewer. There has been confusion over the position of "in house" guest beers - ales on your brewer's price list which they offer to you as 'guest beers'. For example, Marston's Pedigree on the Whitbread price list, or Adnams on the Allied price list.

CAMRA has sought clarification from the Office of Fair Trading, who are responsible for enforcing the Beer Orders, and has received the following interpretation.

**"If a tenant takes supplies of the so called guest beer he remains entitled to buy a brand of draught cask conditioned beer from someone else".**

Under Section 5(2) of the Beer Orders a brewer must supply you, unless:

- a. they believe you will not pay for it, or
- b. they believe you will not return the casks, or
- c. they believe you will not handle it properly.

**In other words, if the brewer refuses to supply the 'in-house' guest beer, simply because you are using your rights to stock a genuine guest beer as well, the brewer might well be in breach of the Beer Orders. Finally, the Office of Fair Trading told us: "Should you become aware of any instance where a tenant of a major brewer was advised that he could not stock a cask conditioned ale from the supplier of his choice, in addition to beers sourced from his landlord brewer, I would be happy to take this up as a potential breach of the Order".**

The Department of Trade and Industry also support this analysis.

CAMRA is not able to offer legal advice,

and ultimately the matter might have to be tested in court. We cannot make a definitive statement of the law and professional advice should be taken if necessary.

### *Notes:*

A national brewer is one with more than 2,000 tied houses. Tenants of pub owning chains and brewers with less than 2,000 tied houses are not, at present, entitled in law to stock guest beers.

The Office of Fair Trading's address is Office of Fair Trading, Competition Policy Department, Chancery House, Chancery Lane, London WC2A 1SP.

CAMRA's address is 34 Alma Road, St. Albans, AL1 3BW.

Tel: 0727 867201. Fax: 0727 867670.

While CAMRA has taken every care in producing this statement, it is not intended to be an authoritative statement of the law, and you should take professional advice where necessary.

*From: Mersey Drinker*

---

## **BACK NUMBERS**

To date 160 editions of London Drinker have been issued: back numbers of the following are available:

1979: March, April, May, June, August, September, December.

1980: February, March, April, May, July, August, September, October, November, December.

1981: February, April, May, June, July, August, September, November, December.

1982: March, April, May, June, July, August, September, October, December.

1983: February, April, June, July, August, September, October, November, December.

1984: All issues (May 1 copy only)

1985 to date: All issues.

If you need any of the above for your collection, they are available at 50 pence each, post free, from: Stan Tompkins, 122 Manor Way, Uxbridge, Middlesex.

---

---

## CLASSIC PUBS - BECKY'S

A score or so years back the drinker's choice in London pubs was rather limited. It was difficult to tell a tied pub from a free house, as most of the latter tended to stock the products of just one brewery, and to decorate the exterior of the building accordingly. Then Becky Willeter came up with the idea of bringing in beers from afar, and the delights of Ruddles and Shepherd Neame, among others, became available just a short walk from London Bridge. This coincided with the formative years of CAMRA, whose progress certainly encouraged the introduction of "Out of Town" beers to the London scene.

Primitive could not adequately describe the facilities then available. Becky's was situated in the basement of the Victorian Hop Exchange Central Building - the sale of hops was a major local industry in years gone by, and indeed until the London telephone numbers were changed to all-figure, the exchange for the area was designated HOP. The basement pre-dated the main building by at least a century and had been used as a wine store, part of which had also doubled as overflow cells for the Clink Prison nearby - the vaulting stretches under the pavement of Southwark Street, where you could well imagine characters from the works of Dickens - a one time local resident - spending an uncomfortable confinement. That part was Becky's cellars. In 1938 the subterranean premises were converted into a private bar for the Exchange above, and in 1942 became a public house, which passed into Becky's hands 9 years later.

The pub was entered down a ramshackle wooden staircase which resembled a narrow cobbled passage sloping at about 30 degrees to the horizontal, where the treads had collapsed; when I went there for my first visit, in 1974, it did not even boast a banister. I heard of Becky's as the result of reading an article in a copy of "Weekend" which I happened to pick up in a school staffroom, extolling the virtues of the enterprise, and I was not a little bemused by what I found. The beer was served direct from casks on the bar-top which was covered with glasses

awaiting a wash. The floor was bare, the furniture in a state of disrepair, and against one wall stood an ancient upright piano with an incomplete set of keys (some of which produced no sound) on which an equally ancient lady - apparently inebriated, senile (or both) tinkled continuously what may, for all I knew, have been avant-garde music, but to me and to everybody else I knew, sounded a tuneless cacaphony.

Miniamalist is one adjective applicable to the decor. It's not the sort of place I would have frequented ("Snob!" I hear you remark) except for the beer, which was, as a rule, in surprisingly excellent condition. This may bemuse you when I say the casks had to be carried through the gents' urinal, situated between the cellar and the bar, prior to setting-up for service. Hygiene was at a premium - one lady friend informed me that the floor of the rooms which only one of her gender could enter were awash with noisome liquid, and duckboards were in permanent use. The approach of a customer caused a cloud of flies to arise from the depths, necessitating a certain amount of acrobatic skill with the skirt to avoid unwanted intrusion. The classic, though, was the glasses situation. In an incident which was by no means unusual, a friend of mine, out for a drink with his wife mentioned above, was served in a clean glass. Without a word Becky picked up a used glass, tipped out the remains of its former contents and decanted the pint into its place. My friend never recounted to me the subsequent conversation, but he later expressed a few forthright opinions on the subject. Shortly after that, Becky's closed down - it was said, probably with some truth, that the environmental health laws were invoked. It was cleaned up and re-opened as The Dive Bar, only to close again in 1982 when its lease was not renewed.

The following February it re-opened after a rebuild, as Barker's Bar. It first offered Bass and Charrington IPA from the handpump, and guest beers gradually made their appearance, also several house beers from an independent brewery. The first of the

*Contd. on p.37*





# **ROCHESTER EUROPEAN BEER FESTIVAL**

---

**27-30 August 1993**

**(Friday to Bank Holiday Monday)  
At the Esplanade, Rochester, Kent  
Open 11am to 7pm daily**

---

**The biggest range of European beers  
ever assembled at a single festival!  
Plus a range of British  
cask-conditioned beers and ciders**

**Entry £3 to Rochester European Food and Drink Fair  
Festival glass available**

## BEER BRIEFING LONDON BEER GUIDE UPDATES 84

A fairly quiet month with no recorded new pub openings. Guest beers continue to spread in big brewers pubs and Courage and John Smith beers continue to replace those of Ruddles and Websters in Grand Met pubs. More information on Whitbread 'Ale House' conversions would be welcome.

The numbers in brackets after each entry refer to the age number in the following guides: E - East London & City Beer Guide, 3rd edition; N - North London Beer Guide, 2nd edition; SE - South East London Pub Guide, 3rd edition; SW - Real Beer in South West London; W - Real Beer in West London; X - Essex Beer Guide, 8th edition. U refers to earlier updates. # indicates a guest beer.

### NEW & REOPENED PUBS & PUBS CONVERTED TO REAL ALE

#### EAST

BARKING, HOPE, 170 Gascoine Road. Greene King: IPA (reinstatement). (X13, U82)  
BARKING, RED LION, 66 North Street. Tetley: Bitter (reinstatement). (X13)  
ROMFORD, CHARMERS WINE BAR, 27 North Street. Adnams: Bitter. Greene King: IPA. Tetley: Bitter. New Free House in former shop premises. Open to the public lunchtimes only. Evenings operated as a disco for private parties. Open 11-4 (11-7 Fri), 11-3 Sat, 12-3 Sun.

### PUBS CLOSED OR CEASED SELLING REAL ALE

#### EAST

E3, RISING SUN. Belhaven (fizz), converted to 'Little Eater' transport cafe. (E92)  
E9, BRIDGE HOUSE TAVERN. Free House (fizz), closed, future uncertain. (E119, U70)  
RAINHAM, ANGEL INN. Free House, H removed. (X84)  
SEVEN KINGS, JOKER. Courage, H removed. (X91)

#### SOUTH EAST

SE13, DUKE OF CAMBRIDGE. Taylor Walker, demolished for road scheme and shopping centre redevelopment. The sad loss of a real Lewisham local, once a regular GBC entry (SE103)

### OTHER CHANGES TO PUBS & BEER RANGES CENTRAL

EC1, SMITHFIELDS FREE HOUSE. -Beers listed except Tetley: Bitter. +Courage: Directors Bitter. +Fuller: Hock, London Pride. (E24, U66)  
WC1, MUSEUM TAVERN. -Everard: Tiger. -Webster: Yorkshire Bitter. +Brakspear: Bitter. +Courage: Best Bitter, Directors Bitter. +John Smith: Yorkshire Bitter. (W47)

W1(F), GRAFTON ARMS. -Fuller: London Pride. -Greene King: Abbot Ale. +Morland: Old Speckled Hen. +Whitbread: Castle Eden Ale. +Varying guest beers sold by electric pumps through phoney casks behind the bar. A Whitbread 'Ale House'. (W29, U74)

W1(F), KING & QUEEN. -Fuller: London Pride. +King & Barnes: 12 Bore Bitter (3.7% ABV). (W29, U66)

W1(S), KING OF CORSICA, 39 Berwick Street. -Bass. +Worthington: Best Bitter. +Varying guest beers. Note correct address (W43, U80)

W1(S), SPICE OF LIFE. -Webster: Yorkshire Bitter. +Bass#. +Hook Norton: Old Hooke#. (W44, U53)

#### EAST

E6, BOLEYN TAVERN. +Wadworth: 6X#. +Young: Bitter#. (E103)

E14, PHOENIX. -Adnams: Bitter. + Wadworth: 6X. (E147, U80)

E18, GEORGE. -Charrington: IPA. +Bass. +Fuller: London Pride. +Worthington: Best Bitter. (E171)

CHADWELL HEATH, WHITE HORSE. +Ansell's: Mild. (X26)

ROMFORD, PHOENIX. +Adnams: Broadside. (X84)

#### SOUTH WEST

SW1(B), FOX & HOUNDS. +Hancocks: HB (SW10, U77)

SW3, CROWN. +Flowers: IPA, Original Bitter. (SW21)

SW3, SURPRISE. -Charrington: IPA. -M&B: Highgate Mild. +Taylor: Landlord. +Worthington: Best Bitter. (SW23, U56, U64, U73, U81)

SW6, ROSE & CROWN. +Bass. (SW29)

SW7, ZETLAND ARMS. -Beers listed. +Courage: Best Bitter, Directors Bitter. +John Smith: Yorkshire Bitter. (SW32)

RICHMOND, TRIPLE CROWN. -Adnams: Bitter. -Tetley: Bitter. +Bass. +Brains: Bitter. +Courage: Best Bitter, Directors Bitter. +Belhaven: 70/- +Fuller: London Pride. +Marston: Pedigree. +Morland: Old Speckled Hen. +Wadworth: 6X. Usually three beers on at a time from above list. Beer list also varies. Formerly TULIP TREE. (SW73, U32, U56)

#### WEST

BEDFONT, GREEN MAN. -Ruddle: County. -Webster: Yorkshire Bitter. +Courage: Best Bitter, Directors Bitter. +John Smith: Yorkshire Bitter. (W96)

BRENTFORD, O'RIORDAN'S TAVERN. +Adnams: Broadside. +Palmer's: Best Bitter. +Young: Special. (W98)

### CORRECTIONS TO UPDATE 82

### NEW & REOPENED PUBS & PUBS CONVERTED TO REAL ALE

E15, GOLDEN GROVE. Should read GOLDENGROVE (one word).

GIDEA PARK, PLOUGH. Should appear under EAST, not SOUTH EAST.

W6, GLOBE. Should read LONDON GLOBE.

### OTHER CHANGES TO PUBS & BEER RANGES

SE3, HARE & BILLET. Ref should read (SE42, U74)



*Contd. from p.34*

latter was called "Old Bollock Twanger" - at the time (I think in the winter of 1984) I vetoed the printing of that title in LD - doubtless the present Editors are less inhibited. Apart from beers, it had a wide range of cocktails, wines and vintage ports, served lunch time pub grub and provided live jazz and discos, also a rack full of newspapers and periodicals for customers' use.

By this stage the toilet facilities had been brought up to date and a respectable condition in a different part of the premises, likewise the cellars, while the old cells became alcoves for drinking and eating by candlelight; a number of my young protégés enjoyed going there for a cola, to boast later that they had been in a prison. I doubt whether they would all say the same now.

Barker's was featured in the 1986 Good Beer Guide where the description read: "Original floor and character all of its own". The beers then listed were: Adnam's Bitter,

Barker's Bollock Twanger and Dive Bar Bitter, Chudley Local Line Bitter, Greene King Abbot, Pitfield Bitter, and regular guest beers, but shortly afterwards it closed yet again, though not for the last time.

The Hop Cellars, as it is now known, bears no resemblance to Becky's as I first remember it. It is at least hygienic, if a little sterile in atmosphere. Still approached by the staircase, which has been relatively safe for many years, the space inside has been more than doubled in depth by the removal of dividing walls, which has revealed cast-iron supporting columns. It is still a free house, as in its different forms it has been for 51 years. The South-East London Pub Guide lists the real beer available as Balls Best Bitter, giving the description: "A spit & sawdust Port & Ale House. The house beer is only sold in pints and is specially brewed for the pub. It is also expensive." That says it all.

Martin Smith

*Contd. from p.21*

and two other beers, which tend to vary.

Turn left out of the pub and carry on to the end of the road. Turn right and keep going along Queens Road until the Albert Arms appears on the left. This Youngs pub lost a great deal of its character when the insides were ripped out, with the loss of the public bar. The beer is usually good, though. This is the last pub on the crawl and buses 57, 85 and 213 stop almost outside, just a little way up Kingston Hill. If you have come by train, Norbiton Station can be found by going down the hill and taking the first turning on the left. For other buses, Kingston town centre is just over a mile away, reached by walking straight down the hill or catching one of the three buses just mentioned.

Over 300 different  
beers

Live entertainment  
every session

Real cider  
& perry

Foreign  
beers

Family  
room

Pub  
games



3rd-7th August 1993  
Olympia, London

**Britain's biggest and  
best Beer Festival**



FOR FURTHER INFORMATION CONTACT -  
CAMRA, 34 ALMA ROAD, ST ALBANS, HERTS AL13BW  
TEL: 0727 867201 FOR SPECIAL PARTY RATES

---

ADVERTISE in

# LONDON DRINKER

*and get your message to the parts other advertising fails  
to reach - the Real Ale drinkers and pub-goers of London*

*Full page £90; Half page £50; Quarter page £30*

*Discounts available for continuous bookings*

*For more information or assistance call our*

*Advertising Manager Barry Tillbrook*

*081-989 7523 (after 7pm and week-ends)*

*It's simple, inexpensive and really works!*

---

## *Beers Of The Month*

*From*

### *Classic Ales Ltd.*

4 Ascot Road, Bedfont, Feltham, Middlesex TW14 8QH

*Telephone: 0784 248475*

**EVERARDS** (Narborough, Leics.)

*Tiger best bitter a.b.v. 4.2%*

*\*"A bronze-coloured, fine tasting  
bitter"*

**ELDRIDGE POPE** (Dorchester, Dorset)

*Best Bitter a.b.v. 3.8%*

*\*"Rich amber, refreshing ale."*

**PALMERS** (Bridport, Dorset)

*Bridport Bitter a.b.v. 3.2%*

*\*"Now rare example of a Dorset 'boys bitter'  
with a floral, quenching palate."*

*\*Courtesy of Roger Protz, "Real Ale Drinkers Almanac"*

---



*Where to buy Continued*

SW1 MORPETH ARMS  
 SW1 ORANGE BREWERY  
 SW1 PAVIOURS ARMS  
 SW1 RISING SUN  
 SW1 ROYAL OAK  
 SW2 HOPE & ANCHOR  
 SW2 J J MOONS  
 SW3 COOPERS ARMS  
 SW3 ROSE  
 SW3 SURPRISE  
 SW4 ANCHOR & HOPE  
 SW4 ROSE & CROWN  
 SW4 SPRINGFIELD TAVERN  
 SW6 DUKE OF CUMBERLAND  
 SW6 WHITE HORSE  
 SW7 ANGLESEA ARMS  
 SW8 OLD RED HOUSE  
 SW8 PRIORY ARMS  
 SW8 SURPRISE  
 SW9 BEEHIVE  
 SW10 FERRET & FIRKIN  
 SW10 KINGS ARMS, 190 Fulham Road  
 SW10 STARGAZEY  
 SW11 BEEHIVE  
 SW11 DUKE OF CAMBRIDGE  
 SW11 PLOUGH  
 SW12 MOON UNDER WATER  
 SW12 NIGHTINGALE  
 SW12 PRINCE OF WALES  
 SW14 HARE & HOUNDS  
 SW14 RAILWAY TAVERN  
 SW15 DUKE OF CAMBRIDGE, Kingston Vale  
 SW15 FOX & HOUNDS  
 SW15 GREEN MAN  
 SW15 CASTLE  
 SW15 JOLLY GARDENERS  
 SW16 BRASS FARTHING  
 SW16 GREYHOUND  
 SW16 PIED BULL  
 SW17 CASTLE  
 SW17 J J MOONS  
 SW17 LEATHER BOTTLE  
 SW18 BREWERY TAP  
 SW18 COUNTY ARMS  
 SW18 HALF WAY HOUSE  
 SW18 OLD SERGEANT  
 SW18 PIG & WHISTLE  
 SW18 SPREAD EAGLE  
 SW19 ALEXANDRA  
 SW19 GROVE  
 SW19 KINGS HEAD  
 SW19 PRINCE OF WALES, Morden Road  
 SW19 PRINCESS ROYAL  
 SW19 TRAFALGAR  
 BRENTFORD, GLOBE  
 CARSHALTON, RAILWAY TAVERN  
 CHESSINGTON, NORTH STAR  
 CHEAM, RAILWAY  
 HAM, FOX & GOOSE  
 HAYES, MOON UNDER WATER  
 HAYES END, MOON & SIXPENCE

HOUNSLOW, LORD CLYDE  
 KINGSTON, ARTFUL DODGER  
 KINGSTON, CANBURY ARMS  
 KINGSTON, COCOANUT  
 KINGSTON, DRUIDS HEAD  
 KINGSTON, FIGHTING COCKS  
 KINGSTON, GAZEBO  
 KINGSTON, KELLY ARMS  
 KINGSTON, NEWT & FERRET  
 KINGSTON, PARK TAVERN  
 KINGSTON, SPRING GROVE  
 KINGSTON, WILLOUGHBY ARMS  
 KINGSTON, WYCH ELM  
 MITCHAM, CRICKETERS  
 MITCHAM, KINGS ARMS  
 MITCHAM, RAVENSBUARY ARMS  
 MITCHAM, WHITE LION OF MORTIMER  
 NEW MALDEN, ROYAL OAK  
 RICHMOND, DYSARTS  
 RICHMOND, ORANGE TREE  
 RICHMOND, SHAFESBURY ARMS  
 RICHMOND, TRIPLE CROWN  
 RICHMOND, WATERMANS ARMS  
 RICHMOND, WHITE CROSS  
 RICHMOND, WHITE HORSE  
 SURBITON, BUN SHOP  
 SUTTON, NEW TOWN  
 UXBRIDGE, PRINCE OF WALES  
 W1 ARGYLL ARMS  
 W1 MORTIMER ARMS  
 W1 WINDMILL  
 W1 WESTMORELAND ARMS  
 W2 ARCHERY TAVERN  
 W2 ROYAL STANDARD  
 W3 KINGS ARMS  
 W4 WINDMILL  
 W5 PLOUGH  
 W5 RED LION  
 W5 ROSE & CROWN  
 W5 WHEATSHEAF  
 W6 BROOK GREEN HOTEL  
 W6 RICHMOND ARMS  
 W10 VILLAGE INN  
 W11 FROG & FIRKIN  
 W12 CROWN & SCEPTRE  
 W12 MOON ON THE GREEN  
 W13 THE FORESTER  
 W14 WARWICK ARMS  
 BRENTFORD, BREWERY TAP  
 BRENTFORD, GLOBE  
 BRENTFORD, LORD NELSON  
 CRANFORD, QUEENS HEAD  
 HAMPTON COURT, KINGS ARMS  
 HAMPTON (West) WHITE HART  
 HAMPTON WICK, WHITE HART  
 HARLINGTON, CROWN  
 HAYES, BLUE ANCHOR  
 HAYES, MOON UNDER WATER  
 HAYES END, MOON & SIXPENCE  
 HOUNSLOW, CROSS LANCES  
 HOUNSLOW, EARL RUSSELL  
 HOUNSLOW, MOON UNDER WATER  
 ISLEWORTH, COACH & HORSES  
 ISLEWORTH, COUNTY ARMS  
 SOUTHALL, BEACONSFIELD ARMS

SOUTHALL, SCOTSMAN  
 TEDDINGTON, QUEEN DOWAGER  
 TWICKENHAM, ALBANY  
 TWICKENHAM, EEL PIE  
 TWICKENHAM, MOON UNDER WATER  
 TWICKENHAM, POPE'S GROTT  
 TWICKENHAM, PRINCE ALBERT  
 UXBRIDGE, PRINCE OF WALES  
 WHITTON, ADMIRAL NELSON  
 WHITTON, WHITE HART

**OFF TRADE**

W11 GROGBLOSSOM

**CLUBS**

ISLEWORTH, Western Geophysical Social Club  
 W1 Polytechnic of Central London  
 S.U. Bar, 104 Bolsolver Street

**OUTSIDE LONDON**


ALDRSHOT, VOLUNTEER  
 ASCOT, CRANBOURNE TOWERS  
 ASCOT, ROYAL OAK  
 BRIGHTLINGSEA, RAILWAY  
 BRIGHTON, EVENING STAR  
 CHERTSEY, CASTLE  
 CHERTSEY, KINGS ARMS  
 EAST MOLESEY, KINGS ARMS  
 ESHER, CLAREMONT ARMS  
 LONG DITTON, MASONS ARMS  
 STAINES, JOLLY FARMERS  
 STAINES, FEATHERS  
 WHITCHURCH, YE OLDE BREWERY INN  
 COLCHESTER, ODD ONE OUT  
 KNOWL HILL (Berks), OLD DEVIL  
 LINCOLN, GOLDEN EAGLE  
 MANCHESTER, JOLLY ANGLERS  
 MORTIMER WEST END (Hants), RED LION  
 OUTWOOD (Surrey), DOG & DUCK  
 PETERBOROUGH, BOGART'S  
 POTTERS BAR (Herts), CHEQUERS  
 ROTHERWICK (Hants), COACH & HORSES  
 SALISBURY (Wilts), WYNDHAM ARMS  
 STEVENAGE (Herts) RED LION  
 SOUTHAMPTON, WATERLOO ARMS  
 STOW MARIES, PRINCE OF WALES  
 STRATFIELD SAYE (Hants), NEW INN  
 SUNBURY, FLOWERPOT  
 SUNBURY, HARE & HOUNDS  
 TEYNHAM, (Kent) SHIP INN  
 TILLINGHAM (Essex) CAP & FEATHERS  
 WATFORD - WEST HERTS SPORTS CLUB  
 WEYBRIDGE, PRINCE OF WALES  
 WORCESTER, BREWERY TAP & BREWERY  
 WORTHING, VINE



# CARRY ON DRINKING

WITH ARTIST...

## STEPHEN B. WHATLEY



Stephen welcomes enquiries about cartoon commissions: celebration cards, promotions, etc. - personalised caricatures from your photographs & ideas.

Stephen is also a painter of note, numbering many celebrities among his sitters & collectors - & undertakes portrait & other subject commissions.

For further details.....

**S.B. WHATLEY**  
**PO BOX 2556**  
**ENFIELD EN2 8SE**  
**TEL: 081-367 0469**



© S.B. Whatley  
1993