

Sep  
1989

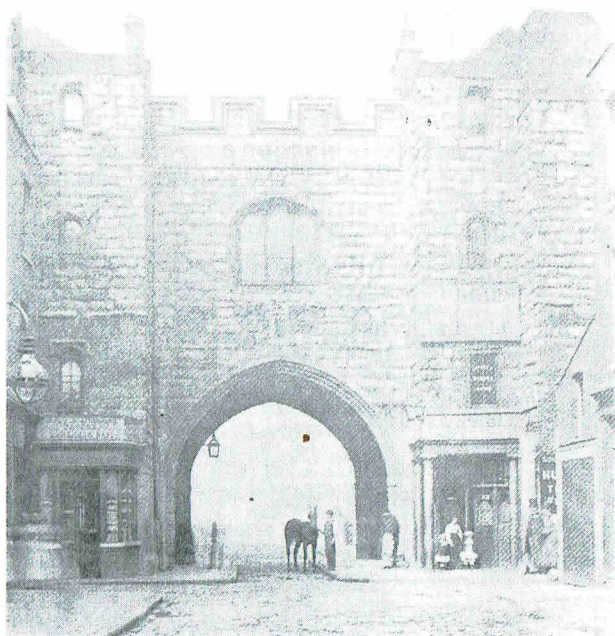
# LONDON



25p

# DRINKER

Featuring a Historicrawl of  
Smithfield and Clerkenwell



ST JOHN'S' GATE circa 1870s

Produced by the London branches of the Campaign for Real Ale Ltd

VOL 11

No 8

# Where to buy London Drinker

The following is a list of all of the current outlets for London Drinker. Where the full addresses of outlets are not given these pubs are to be found in one of the local beer guides, covering the whole of Greater London.

## OUTLETS - EAST and SOUTH

### EAST PUBS

EC1 ARTILLERY ARMS  
EC1 CROWN  
EC1 EAGLE  
EC1 PHEASANT & FIRKIN  
EC1 SEKFORDE ARMS  
EC1 SMITHFIELD'S PAST & PRESENT  
EC1 STICK & WEASEL  
EC1 THOMAS WETHERED  
EC2 FLEETWOOD  
EC2 RAILWAY TAVERN  
EC4 BLACKFRIAR  
EC4 HATCHET  
EC4 WILLIAMSON'S TAVERN  
E1 FISH & RING  
EC1 PRIDE OF SPITALFIELD  
E2 APPROACH TAVERN  
E2 MARKSMAN  
E2 OWL & THE PUSSYCAT  
E2 SHIP & BLUE BALL  
E3 PEARLY KING  
E8 LADY DIANA  
E9 CHESHAM ARMS  
E9 FALCON & FIRKIN  
E9 ROYAL STANDARD  
E11 NORTHCOTE  
E17 COLLEGE ARMS  
SE1 ANCHOR & HOPE  
SE1 ANCHOR TAP  
SE1 BUNCH OF GRAPES  
SE1 COPPER  
SE1 DOGGETTS  
SE1 FOUNDERS ARMS  
SE1 GOOSE & FIRKIN  
SE1 HORNIMAN AT HAYS  
SE1 KINGS ARMS  
SE1 ROYAL GEORGE  
SE1 SULTAN  
SE1 TRINITY ARMS  
SE1 WELLINGTON  
SE3 BRITISH OAK  
SE5 PHOENIX & FIRKIN  
SE5 WICKWOOD TAVERN  
SE7 McDONNELLS  
SE8 DOG & BELL  
SE8 ROYAL GEORGE  
SE10 HARDY'S  
SE10 ROYAL GEORGE  
SE10 SPANISH GALLEON  
SE10 WILLIAM IV  
SE13 FOX & FIRKIN  
SE15 WHITE HORSE  
SE16 BLACKSMITHS ARMS  
SE16 MANOR TAVERN  
SE16 SHIP  
SE18 ANGLESEA ARMS  
SE18 EARL OF CHATHAM  
SE18 GATEHOUSE  
SE18 MELBOURNE ARMS  
SE18 VILLAGE BLACKSMITH  
SE19 ROYAL ALBERT  
SE20 ANERLEY ARMS

SE20 HOPE EXCHANGE  
SE20 CRYSTAL PALACE TAVERN  
SE24 COMMERCIAL  
SE24 PRINCE REGENT  
SE25 ALBERT  
SE25 GOAT HOUSE  
SE25 SHIP  
SE26 DULWICH WOOD HOUSE  
SE27 HOPE  
SE27 GIPSY QUEEN  
SE27 KINGS HEAD  
BEXLEY, BLUE ANCHOR  
CROYDON, DOG & BULL  
CROYDON, LION  
CROYDON, TWO BREWERS  
SIDCUP, JOLLY FENMAN  
THORNTON HEATH, FOUNTAIN HEAD  
THORNTON HEATH, WHEAT SHEAF

### OFF TRADE

E4 Waltham Wines, 72 Sewardstone Road.  
SE3 Bitter Experience, 128 Lee Road.  
SE23 2 Brewers, 97 Dartmouth Road  
BEXLEYHEATH, Bitter Experience, 216 Broadway.  
BROMLEY, Bitter End, 139 Masons Hill.

### CLUBS

CROYDON, Ruskin House, 23 Coombe Road.

### OUTLETS - WEST CENTRAL, AND NORTH PUBS

WC1 CALTHORPE ARMS  
WC1 CITIE OF YORKE  
WC1 HANSLER ARMS  
WC1 LAMB  
WC1 MARLBOROUGH ARMS  
WC1 MOON  
WC1 PAKENHAM ARMS  
WC1 PRINCESS LOUISE  
WC1 RUGBY TAVERN  
WC1 SUN  
WC2 CROWN & ANCHOR  
WC2 GEORGE IV  
N1 COMPTON ARMS  
N1 GEORGE IV  
N1 GEORGE & VULTURE  
N1 HEMINGFORD ARMS  
N1 HOPE & ANCHOR  
N1 KINGS HEAD, 59 Essex Road.  
N1 LORD WOLSELEY  
N1 MALT & HOPS  
N1 MARQUESS TAVERN  
N1 PRINCE ALBERT  
N1 PRINCE ARTHUR  
N1 ROSEMARY BRANCH  
N2 OLD WHITE LION  
N2 WINDSOR CASTLE

N4 MARLIERS  
N4 MORTIMER ARMS  
N4 OLD SUFFOLK PUNCH  
N4 WHITE LION OF MORTIMER  
N7 ADMIRAL MANN  
N7 FAT HARRY'S  
N7 FLOUNDER & FIRKIN  
N10 MAID OF MUSWELL  
N12 MOSS HALL TAVERN  
N12 TILTED GLASS  
N15 GOAT  
N15 K. K. MCCOOLS  
N16 ROSE & CROWN  
N16 TANNERS HALL  
N17 BOAR  
N17 ELBOW ROOM  
N17 NARROW BOAT  
N19 DOG  
N19 J. J. MOONS  
N20 BULL & BUTCHER  
N20 CAVALIER  
N21 DOG & DUCK  
N22 MOON UNDER WATER  
N22 NELSON  
BARNET, ALEXANDRA  
BARNET, MOON UNDER WATER  
BARNET, WEAVER  
EAST BARNET, CAT & LANTERN  
ENFIELD, JOLLY BUTCHERS  
ENFIELD, KING & TINKER  
ENFIELD, KINGS HEAD  
ENFIELD, OLD WHEATSHEAF  
NEW BARNET, BUILDER ARMS

### OUTLETS - NORTH-WEST

NW1 DUCK INN  
NW1 GLOUCESTER ARMS  
NW1 VICTORIA  
NW1 VICTORIA & ALBERT BARS  
NW3 FLASK TAVERN  
NW3 WELLS HOTEL  
NW4 CHEQUERS  
NW4 WHITE BEAR  
NW7 RAILWAY TAVERN  
NW8 CROCKERS  
NW8 ORDNANCE  
NW9 GEORGE  
NW9 J. J. MOONS  
NW10 GRAND JUNCTION ARMS  
HAREFIELD, PLOUGH  
HARROW, KINGSFIELD ARMS  
WEALDSTONE, ROYAL OAK

### OFF TRADE

N1 Beer Shop, Pitfield Street.  
NW6 Grog blossom, 235 West End Lane.

### CLUBS

WC1 UNIVERSITY OF LONDON UNION, Malet Street  
WC2 L.S.E. Houghton Street

Continued on p27



---

## EDITORIAL

Now that the Flexi-hours situation has had a chance to settle down, it is gratifying to see how many pubs are advertising their opening times outside. A thirsty customer approaching such an establishment is more likely to return when he knows that it will be open than try again on the off-chance.

Not so satisfactory is the situation regarding price lists. By law these must be prominently displayed and legible to customers. How frequently one needs a telescope to read them even if they are not behind another notice or totally non-existent! (Prices marked on pumps, clips, optics, etc, are permissible). Are some gov'nors simply negligent, ignorant of the law or downright ashamed of what they are charging us drinkers? In many London pubs they most certainly should be.

Another successful GBBF is behind us. Hard work, but good fun. However, working as I was on glasses, it saddening to hear several complaints about prices. It seems that it has still not sunk into some festival goers that the staff are unpaid volunteers giving up their free time performing often thankless tasks. As I touched no beer the entire time just cider and perry at staff rates, I couldn't comment. But it should be obvious to even the most disgruntled punter that, as brewers rarely supply sale-or-return, a certain mark up is necessary to cover losses. It is unlikely (to say the least) that the last pint is drawn as time is called, and we don't want to run out early. We can do without that sort of attitude. After all, who is doing a favour to whom?

Martin Smith

---

## BRANCH CONTACTS

BEXLEY .....	DES WARD .....	Erith 457156 (H) Orpington 38321 x29	(Wed-Fri only)
BROMLEY .....	DAVE FOORD .....	0689 54798 (H)	
CROYDON & SUTTON .....	TERRY HEWITT ....	660 5931 (H)	
EAST LONDON & CITY .....	HUGH SMITH .....	519 1743 (E)	
ENFIELD & BARNET .....	LAURENCE FRYER	203 0710 (H)	
KINGSTON & LEATHERHEAD	ALLAN MARSHALL	942 9115 (H) .... 227 3376 (W)	
NORTH LONDON .....	GARY WHITE .....	801 9513 (H) .... 405 7686 x2168 (W)	
RICHMOND & HOUNSLOW ..	ANDY PIRSON .....	977 1633 (H)	
SOUTH WEST ESSEX .....	ANDREW CLIFTON	Romford (0708) 765150 (H)	
SOUTH EAST LONDON .....	DAVE SULLIVAN ..	699 8476 (H & W)	
SOUTH WEST LONDON .....	CHRIS MORTON ....	499 8931 (W) .... 874 7661 (H)	
WEST LONDON .....	ROBERT McGOWAN	691 8019 (H) .... 242 0262 x2348 (W)	
WEST MIDDLESEX .....	TED BRADLEY .....	573 8144 (H) .... 997 8880 x2153 (W)	

---

**LONDON DRINKER** is published by the London Branches of CAMRA, the Campaign for Real Ale Limited. Editors: Martin Smith, 64 Brailsford Road, SW2. Chris Cobbold. Tel: 674 0556. Andy Pirson, 22 Fulwell Road, Teddington, Middx. TW11 0RA. 01-977 1633

**SUBSCRIPTION:** (£6.00 for 1 year) should be sent to: Stan Tompkins, 122 Manor Way, Uxbridge, Middlesex.

**ADVERTISING:** Barry Tillbrook. Tel: 403 7500 (W) or 989 7523 (after 7 pm).

---

Deadline for the October edition, 1st Sept. Material for Nov edition to arrive by 2nd Oct.  
**Please be sure to send diary material to Andy Pirson.**

Printed by Dasprint Limited, 53 Lydden Grove, Wandsworth, London SW18 4LW

---

---

## 3rd CHAPPEL BEER FESTIVAL MAIDSTONE BEER FESTIVAL

Once again CAMRA in Essex are getting together with the Stour Valley Railway Preservation Society to organise the 3rd Chappel Beer Festival which is being held from Wednesday 6th to Saturday 9th September. As before, the event is being held at the East Anglian Museum at Chappel & Wakes Colne Station just off the A604 half way between Halstead and Colchester (near the big viaduct). A total of 40 beers are expected and the admission charge of 50 pence (free to CAMRA members) will also allow admittance to the railway museum during daylight hours.

Opening times are 5pm to 11pm on Wednesday and 11am to 4pm & 5pm to 11pm on Thursday to Saturday. There will be entertainment on Friday evening and Saturday. Free parking is available and there are regular trains from Colchester, Marks Tey, Bures and Sudbury. It

is hoped to organise a late train back to Marks Tey and Colchester.

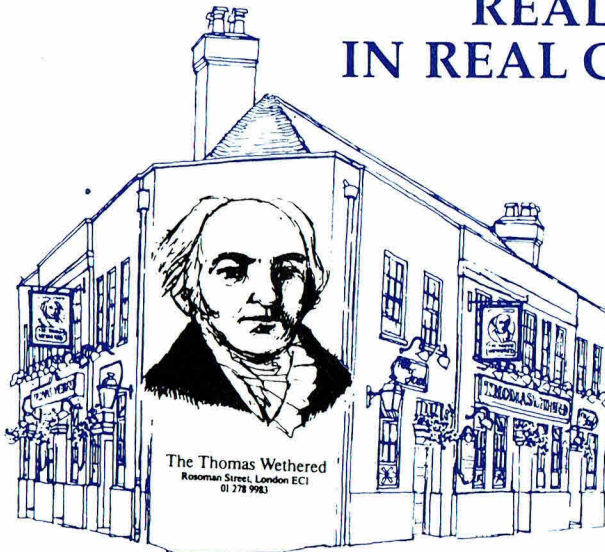
Also on Saturday 9th September for those further south is the Maidstone Beer Festival at the Museum of Kent Rural Life and Standing, Maidstone organised by Maidstone and Mid Kent branch of CAMRA. The festival will open from 11am to 11pm and will feature 40+ beers food (quoted as better than last year!), entertainment and traditional hop picking.

Admission will cost £1.50 which also gives entry to the museum. The museum is 400 yards from the M20/A229 Junction or can be reached by bus route 155 from Maidstone East Station. Alternatively take bus 101 to the Running Horse 400 yards away.

More information can be obtained from Jeff Tucker on Snodland (0634) 241538, He advises you come early to avoid disappointment

---

## REAL ALE IN REAL COMFORT



Wethered Bitter · Wethered SPA

Marston Pedigree

McMullen Country Bitter

Traditional Cider

Monthly Guest Beer  
at 95p pint

Hot & Cold food always available

Full cold buffet

Salted Beef Sandwiches

Carvery roast · Sunday lunch

Open all licensed hours

Office parties/functions a speciality

Happy hour 5.30 - 6.30pm

All beers at £1 pint



Dont Miss Your Chance to Share  
the Future of CAMRA in London

Keg  
Buster  
needs  
YOU!

All Day London Conference  
White Horse  
Parsons Green  
SW6



From 11am, Saturday 30th September 1989

Debate: MMC, Campaigning in London, GBBF,  
etc Lots of Guest Speakers



All CAMRA Members Welcome

## Book review

### - Where to drink in Berkshire

The 5th beer guide to Berkshire was published in July. Every pub in the Royal County was surveyed, but only the vast majority serving real beer are featured. Most Morland pubs are omitted as all but a handful use blanket pressure. That company has also expressed the intention to cease marketing cask - conditioned beer.

The mammoth task of research has been carried out well, and seems in some circumstances to have been hampered by lack of co - operation in certain pubs when cross - checking information. These are clearly indicated. The descriptions are well written and interesting, as are introductory paragraphs under a fair number of place names. Local maps are clear and useful, but regrettably there is no index or section on "How to use the guide" which would help in locating the county map to find any specific place by its usefully and provided grid references by the names. The map is, in fact, on pages 80 and 81 (out of 84) - it took me some time to locate it along with the key to

facility symbols on the same pages. They would be far better as near to the front cover as possible, and why on earth is it that no two beer guides have the same set of symbols?

Features of the "Editorial" content are a list of brewers and beers available, brewery takovers, the situation regarding Wethered and Morlands, drinking and living, guest beers, CAMRA, the brewing process and, of course, the definition of real ale.

This is an attractive publication, printed on A5 paper similar in quality and size to the page on which this item appears. It is a pity that the "perfect" system of binding was chosen, a misnomer if ever I heard one. Involving the pages being simply glued inside the spine. Any such books which come into my possession invariably end up as "loose - leaf" versions during my customary transferring of ticks and comments from previous editions. However, this guide is well worth the cover price of £1.95. An update list will be available on request at the end of the year.

---

## IDLE MOMENTS

Now I know that people actually read all this tosh every month. Last month I resorted to putting in my own non-rhyming limerick and said the cupboard was bare and so along comes Roger Jacobson from Bow with two more. Yes, I thought that name was familiar as well so I checked and sure enough, he contributed four of them which we printed between October and December last year. I'm only going to print one of them this month as there is a special treat coming up in a little while - read on and you will find out what it is. Anyway here is Roger's first:

A man on a beer drinking trial  
drank a pint or two of Young's Special,  
but it so blew his mind  
and it gave him such wind  
that in future he stuck to lime cordial.

You'll never guess what comes next. Oh all right it's the number puzzle again - and as usual we'll kick off with last month's answers:

1. 7 Pillars of Wisdom ( T.E.Lawrence)
2. 13 Unlucky for some
3. 24 Carat pure Gold
4. 2 Sides to Every Story
5. 21 Shillings in a Guinea
6. 100 Boiling point of water (Celsius)
7. 9 Doctor's Orders
8. 13 Players in a Rugby League Team
9. 22 Yards in a Chain
10. 88 Two Fat Ladies

And to follow the well known formula here are some for this month

1. 13 S in an O
2. 12 S on a TSG
3. 168 S on a S of D (DS)
4. 1 ED in a LY
5. 21 K of the D
6. 3 V on a T
7. 2400 PA is the WH
8. 15 P in a RUT
9. 273 (M) is AZ (C)
10. 9 H on a BBT

Did you guess which of last month's brewery anagrams was one of fifteen? If you did then the next few months may be a bit easier for you

(though probably less exciting). Still, to put you out of your misery here are the answers to them:

- |                  |               |
|------------------|---------------|
| 1. A FURY MIXER  | FRIARY MEUX   |
| 2. HATES KNOTS   | THEAKSTONS    |
| 3. RIDGED PEOPLE | ELDRIDGE POPE |
| 4. DATE ON FIRE  | FEDERATION    |
| 5. SLAM THIS EMU | SAMUEL SMITH  |

And to keep you interested (Well, maybe) here are five more to play around with:

1. SEW ROLF
2. THOSE PINS
3. PAVED SNORT
4. MEL RAPS
5. JOE, THAT'S YULE

Little did I realise when I started the mirror writing bit how many people would relish writing about vomiting tomatoes, Neil Rutherford of Slough doesn't say in this poem that it is actually the said love apple that he is chucking up but they are both there:

,YMMUT YM TA HTUOM YM MIA I  
,YMMUM YM TA TIMOV OT WOV  
,HTUOY HTOMMAM TIWTUO OT MIHW A  
,HTOOT YM TA OTAMOT MIA OHW

And now this is it! You will remember (because I keep going on about it) that Denys Vernall offered a prize of £5 for the first mirror writing non-rhyming limerick. Well the same poet has produced one of those too. The trouble is that he is too ashamed to accept the prize (according to his letter) as the limerick is ridiculous in its meaning (that wouldn't worry me) but Denys has already given me the fiver on the strength of it - Neil asks that if no-one else sends one in the money should go to a deserving cause. So you see the prize could still be up for grabs. Anyway here is the poem in question:

MIA YHTOMIT WOH YTTAT WOH  
MIH TA OTAMOT TIMOV OT  
HTUOM MUMIXAM HTIW  
HTUOY TOH TIWTUO OT  
"MT" HTIW YMMUT YM OOTTAT I

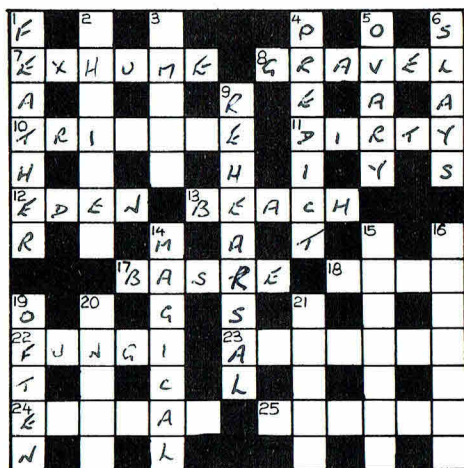
Actually Neil started the last line with the word HE, so I had to alter it slightly - I hope I didn't muck up the meaning



# LONDON DRINKER CROSSWORD

COMPILED BY DAVE QUINTON

£10 PRIZE TO BE WON



## ACROSS

- ~~7.~~ Dig out smell in flower. [6]
- ~~8.~~ Hammer right into stone. [6]
10. Plays three at juggling. [7]
- ~~11.~~ It is right in self improvement to be filthy. [5]
- ~~12.~~ Garden of oriental study. [4]
- ~~13.~~ Composer takes in Elgar's First at the Prom. [5]
- ~~17.~~ Cook article I found in charming creature. [5]
18. Dust off boss. [4]
- ~~22.~~ Amusing fellow, I hear, can grow on you. [5]
23. Take fruit from bed after almost a month. [7]
24. Former star somehow runs over. [6]
25. Employment race. [6]

## DOWN

- ~~1.~~ It's ticklish with a generator out east. [7]
2. Supported revolutionary, eastern revolutionary. [7]
3. Friendship? It's in the girl. [5]
- ~~4.~~ Small pair order forecast. [7]
- ~~5.~~ Body part shows no change. [5]
- ~~6.~~ Kills when put down in ship. [5]
- ~~8.~~ Listens again to Alan practising. [9]
- ~~14.~~ Wise men state it's amazing. [7]
15. First sweet heart is a stayer. [7]
16. Steroid unearthed by journalists. [7]
- ~~19.~~ It's frequently decimal. [5]
20. Water rates? [5]
21. It's wrong to be taken in concerning food. [5]

Name.....

Address.....

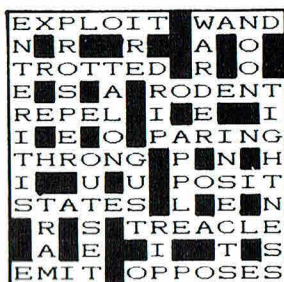
All correct entries received by first post on 27th September will be entered into a draw for the prize.

The winner of the prize will be announced in the November London Drinker.  
Solution next month.

All entries to be submitted to:  
London Drinker Crossword  
25 Valens House  
Upper Tulse Hill  
London SW2 2RX

Winner of the prize for the July crossword:  
A P Comaish, 48 Cherry Tree Walk, Beckenham,  
Kent, BR3 3PQ

## Last Month's Solution



Other correct entries were received from:  
Geoff B, Keith Birnie, Ivor Boys, H M Casey,  
Gladys Cringe, CAMRA Dengie 100,  
Hammond Eggs II, Ian Fairweather,  
Elaine Glover, Eileen Graves, Alison Henley,  
J A Mason, Perry Merton, Mike Moran,  
Steve Mott, Rab Noolas, Rob Prince,  
Martin Weedon, Grizelda Whiplash,  
Tony Whitford, Yak.

There were also 11 incorrect entries. They all put "RETESTED" instead of. "RETASTED".





---

## FULLERS NEWS

**MOVING ON:** Two well known, and well liked figures have departed the Fuller's scene from the West Middlesex branch area. Gordon Kearns, the long standing tenant of the RED LION in Ealing, W5, has decided to call it a day and retire to the country. His pub will be known to many of you as it features on the front cover of Real Beer in West London. Gordon's pub has been a regular entry in the Good Beer Guide and the good news is that his manager of some years, Ken, has been asked to stay on as licensee of the pub which now comes under Griffin Inns - the managed arm of Fullers.

The other departure is of Gil Cooray, the popular manager of the RED LION & PINEAPPLE in Acton, W3, who has left Booker & Sons after spending over eight years at the pub. His skill at keeping beer was reflected by eight consecutive entries in the GBG. Gil is on the look-out for his own tenancy somewhere in West London. We wish both him and Gordon every success for future.

**THE PRESSURE IS OFF:** Some excellent news for Fullers drinkers in Ealing. Following the recent conversion of the WHEATSHEAF to handpumps comes news of the CASTLE, St. Mary's Road, W5. At last handpumps have sprouted in this fine little pub and early reports indicate that the beer is in very good nick. This leaves the appalling FEATHERS (Berni, deafening disco music, bouncers, dress code and "keg" Fullers from invisible taps) as the last remaining "Sweet-shop" in W5. No chance of this one going real until the leaseholders - Berni Inns - have a change of policy, and that's as likely as Watney's now producing a decent drop of beer.

As we go to press we have just heard that the SIX BELLS in Brentford High Street has also gone real. This basic one bar pub features live music most nights as well as bed & breakfast facilities

**MORE GOOD NEWS:** The last Fullers fizz pub outside of Greater London, THE SWAN at The Hythe,

Staines has also converted to handpumps. This leaves only four Fullers pubs not selling beer by CAMRA approved methods: the RED LION in Brentford; the PADDINGTON PACKET BOAT in Cowley; the VIADUCT in Hanwell, W7 and the above mentioned FEATHERS in Ealing. However, one of these is due for conversion very soon.

**CHANGES:** The NARROW BOAT, Ladbroke Grove, W10 has recently undergone a change of tenant, Di and Linton Culbert of the LORD NELSON, Brentford have taken the pub on and overseeing the operation are daughter and son in law Teresa and Geoffrey Yeats. Geoffrey has just joined CAMRA and is disposing of large quantities of London Drinkers every month to avid readers. All CAMRA members will be made especially welcome - just make yourselves known.

**AND FINALLY:** Following Her experience at the QUEENS HEAD, Stepney (a Youngs house), the Queen Mother has obviously got a taste for decent London beer. She dropped into the SALUTATION in Hammersmith last July to pull a pint of ESB. She must be a CAMRA member and was clearly doing Her bit for the July "Independents" promotion. (Memo to HQ - we ought to be told!)

Bernie Peal

Fullers Brewery Liaison Officer



## **LONDON DRINKER WRITERS' COMPETITION**

### **FIRST PRIZE £30**

Can you write an article (not less than 250 words) on an aspect of Beer, Brewing, Pubs, Licensing etc relating to the Greater London area for publication in this magazine?

Entries to the editors whose decision is final.

All runners up articles published will receive £10

Closing Date 31st October 1989

### **THE GLASSBLOWER, W1**

Recently transferred from Clifton Inns to Chef & Brewer, there have been several changes at the Glassblower. Alex Savile, the former manager and ardent supporter of both the Real Ale cause and the London Drinker, has left the district and the pub no longer sells this magazine.

The gas lights remain as do the bare floorboards. However, the slate tiles with chalk inscriptions of inane comments heard there such as "Free House what brewery is that?" - have gone. Gone also is the old wall decor to be replaced by reproductions of old prints of the glassblowing process (in former days a local industry) and the beams bear quantities of metal beer casks and large spirit bottles. Eleven handpumps are in evidence. On a recent visit (22/7/89) seven were dispensing different real ales, and one Bullmans Traditional Cider - at £1.45 a pint. The price list was visible, and legible provided no more than one person was standing by the wall at the end of the bar where it is located.

Our informant was of the impression that the average price for real beers was between £1.40

and £1.50, but admits to being no mathematician. The Glassblower seems to be in the running for the dearest pub in London - any other contenders?  
M.S.

---

### **BACK NUMBERS**

To date 116 editions of London Drinker have been issued, back numbers of the following are available:

1979: April, May, September, December.  
1980: Feb, March (1 copy only), April, Sept, Nov.  
1981: April (1 copy only), June, July, Aug, Oct.  
1982: Feb (1 copy only), May, July, Sept.  
1983: Mar (1 copy only), June - Dec inc.  
1984: March - Dec incl.  
1985 to 1989: All issues.

If you need any of the above for your collection, they are available at 50 pence each, post free from:  
Stan Tompkins, 122 Manor Way, Uxbridge, Middlesex.



---

## BRANCH DIARY

If your branch is not mentioned, please ring the Branch Contact. Dates for September of which we have been notified are given below. Branches please send information to Andy Pirson, Branch Contacts page 3

**CROYDON & SUTTON:** Tue 5 (8.00) Two Pub Social, HARE & HOUNDS, 325 Purley Way, Waddon then WADDEN HOTEL (9.30), 2 Stafford Road - Mon 11 (8.00) Joint Games Social with Kingston & Leatherhead Branch, WYCHELM, 93 Elm Road, Kingston - Wed 20 Croydon Old Town Crawl. WANDLE ARMS (dep. 8.45), 90 Waddon New Road then PITLAKE and ROSE & CROWN - Thu 28 (8.00) Branch Meeting. RACEHORSE (public bar), 17 West Street, Carshalton - Wed 4 Oct, Cheam Crawl, BELL (dep.8.45), Ewell Road then CLARET WINE BAR; PRINCE OF WALES and RED LION.

**ENFIELD & BARNET:** Sun 3 (12.00) Lunchtime Garden Social, EDGWAREBURY HOTEL, Edgwarebury Lane, Elstree - Thu 7 (9.00) Two Pub Social in Finchley, N11. GROVE, 2 Friern Barnet Lane then DUCK (10.00), 35 Friern Barnet Lane - Wed 13 (8.30) Branch Meeting & Members' Slide Show, BULL & BUTCHER, 1277 High Road, N20 - Tue 19 (9.00) Joint Social with North London Branch, MAGDALA TAVERN, 2a South Hill, Hampstead, NW3 - Thu 21 Brewery Visit to King & Barnes, Horsham, Phone Branch Contact for details - Thu 28 (8.30) Menagerie Meander II in Ponders End, SWAN, 216 High Street; GOAT (9.20), 252 High Street; WHITE HART (10.10), 165 High Street.

**KINGSTON & LEATHERHEAD:** Sun 3 (12.00) Sunday Social, FOUNTAIN, New Malden - Mon 11 (8.00) Pub Games Evening, WYCHELM, Kingston - Thu 14 (8.30) Business Meeting. WAGGON & HORSES, Surbiton - Sun 1 Oct (12.00) Sunday Social. RUNNING HORSE, then DUKES HEAD (1.30), both Leatherhead.

**RICHMOND & HOUNSLOW:** Tue 5 (8.30) Committee Meeting, QUEEN DOWAGER, 49 North Lane, Teddington - Tue 12 (8.30) Joint Two Pub Social with West Middlesex Branch. WAGGON & HORSES, then EXPRESS HOTEL (9.45), both Kew Bridge Road, Brentford - Mon 18 (8.30) Branch Meeting, DUKES HEAD, 42 The Vineyard, Richmond.

**SOUTH EAST LONDON:** Mon 4 (8.00) Open Committee/Branch Social, HORSESHOE, 26 Melior Street, SE1.

**SOUTH WEST ESSEX:** Wed 6 to Sat 9 (Wed evening; Thu - Sat lunchtime & evening) Third Chappel Beer Festival, East Anglian Railway Museum, Chappel & Wakes Colne Station (See feature - details from Alan Barker, tel. Upminster 29989) - Tue 12 (8.30) Branch Meeting, HINDS HEAD, 2a Burnside Road, Dagenham (Just down from Chadwell Heath Station) - Sat 21 (8.00) Out of Area Social. LITTLE GEM, Aylesford, Kent - Tue 26 (8.30) Social, SWAN, Kelvedon Hatch - Mon 2 Oct (8.00) Darts Match Vs Herts/Essex Borders, WHITE HART, Moreton (provisional).

**WEST LONDON:** Thu 21 (8.00) Branch Meeting, HARCOURT ARMS, Harcourt Street, W1 - Tue 12 (8.00) Aldwych Crawl, GEORGE & DRAGON, 213 Strand, CHESHIRE CHEESE (9.00), 5 Little Essex Street, WC2, FOOTLIGHTS BAR (10.00), Waldorf Hotel, Aldwych, WC2 - Sun 24 (8.00) Sunday Social, GROUSE & CLARET, Little Chester Street, SW1.

**WEST MIDDLESEX:** Wed 6 (8.00) Pinner Crawl. Start WHITTINGTON, Cannon Lane then GEORGE (8.45), Marsh Road; VICTORY (9.15), 6 High Street; HAND IN HAND (9.45), 38 High Street; QUEENS HEAD (10.30), High Street - Tue 12 (8.30) Joint Two Pub Social with Richmond & Hounslow Branch, WAGGON & HORSES, then EXPRESS HOTEL (9.45), both Kew Bridge Road, Brentford - Wed 20 (8.30) Branch Meeting, BEACONSFIELD ARMS, 63 West End Road, Southall - Mon 25 (8.30) Social. CASTLE, 36 St. Mary's Road Ealing, W5 - Tue 3 Oct (8.30) London Drinker Pick-up, BLACK HORSE, 1018 Harrow Road, Sudbury.

Deadline for the October edition, 1st September. Material for November edition to arrive by 2nd October. Please be sure to send diary material to Andy Pirson.

---

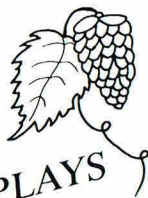


# HOP FESTIVAL

**Saturday 23rd September**  
**at the Whitbread Hop Farm,**  
**Paddock Wood, Kent.**

**A CELEBRATION OF THE HOP PICKING ERA**

**MUSIC &  
DANCING**



**HOP QUEEN  
CROWNING**



**PEARLY KINGS  
& QUEENS**

**ARENA DISPLAYS**

**HOG ROAST**

**GAMES & SPORTS**

**GOOD FOOD &  
DRINK**

**HOPPERS  
SUPPER**

**ALL THE FUN OF  
THE FAIR**

**THE WHITBREAD  
SHIRE HORSES**

**FIREWORKS**

**CRAFT STALLS**

***And so much more!***

**MAIN ATTRACTIONS  
START AT 2.00PM**

**Open from: 10am to 10.30pm**  
**(last admissions 7.30pm)**  
**Hoppers Supper: 6.30pm**

**Adults £3.50. Children (under 14) and Senior Citizens £1.50**  
**(under 4's Free)**



## BEER BRIEFING

### LONDON BEER GUIDES UPDATE 46

The pub and real ale scene in London is constantly changing. The aim of this column is to keep "London Drinker" readers up to date with events as they happen and record confirmed changes to pubs and beers as they are reported. This month we welcome a brand new Docklands riverside pub; a new station bar and two further Fullers conversions to real ale. The latter leave just four Fullers pubs using CO<sub>2</sub> dispense in their entire estate. More Belhaven acquisitions have been reported but few have real ale. The silly season in renamings continues unabated.

The numbers in brackets after each entry are intended to make it easy to update your London beer guides. They refer to page numbers in the East London & City Beer Guide, 2nd edition (E prefix); the North London Beer Guide, 2nd edition (N prefix); the South East London Pub Guide, 3rd edition (SE prefix), Real Beer in South West London (SW prefix); Real Beer in West London (W prefix); the Essex Beer Guide, 7th edition (X prefix) or previous updates (U prefix).

If you would like to report changes to pubs or beers please write to: Beer Guides Updates, 2 Sandtoft Road, London SE7 7LR.

#### NEW PUBS & PUBS CONVERTED TO REAL ALE EAST

E1, HENRY'S CAFE & BAR, 8 Balkan Walk, Tobacco Dock Shopping Centre, Pennington Street. New yuppie Free House/Cafe Bar. No real ale.

E14, BARLEY MOW, Limehouse Basin, Narrow Street. Taylor Walker: Best Bitter. Tetley: Bitter. Young: Bitter. New Taylor Walker pub created by converting the Dockmaster's House, a listed building on the river at the entrance to Limehouse Basin. Attractive traditional decor with comfortable ground floor and first floor bars, conservatory (well behaved children allowed) and riverside terrace. Open all hours; food always available (except Sunday evenings). Small car park. Recommended.

#### SOUTH EAST

SE1, BONAPARTES, Main Concourse, Waterloo B.R. Station. Bass. New Free House cafe style bar.

SE2, HARROW INN, 500 Abbey Road. Courage: Directors Bitter. (SE46)

SE8, GLOBE, 321 Evelyn Street. Ruddle: Best Bitter. Webster: Yorkshire Bitter (SE71)

SE10, GUILDFORD ARMS, 35 Guildford Grove. Bass. Charrington: IPA. (SE84)

SE25, FREEMASONS TAVERN, 81 Penge Road. Tetley: Bitter (reinstatement). (SE184)

#### SOUTH WEST

SW9, PRINCE OF WALES, 467 Brixton Road. Charrington: IPA. Recently reopened after part of premises relinquished for Pizza Hut. (SW37, U43)

SUTTON, WOODMAN, 10 Lower Road. Flowers: Original Bitter. Wethered: Bitter. (SW77)

#### WEST

W5, CASTLE, 36 St Mary's Road. Fuller: London Pride, ESB. Fine little pub. (W72)

W12, BEAUMONT ARMS, 170 Uxbridge Road. Bass. Charrington: IPA. Fuller: ESB. (W91)

BRENTFORD, SIX BELLS, 318 High Street. Fuller: London Pride, ESB. Very basic one bar pub. Live music; bed & breakfast available. (W99)

GREENFORD, HARE & HOUNDS, 229 Ruislip Road. John Smith: Yorkshire Bitter (reinstatement). (W102)

HILLINGDON, HEATH TAVERN, 4 Uxbridge Road. Ruddle: Best Bitter. Webster: Yorkshire Bitter. Reopened after extensive refurbishment and with an attached Hennelly's steak and seafood restaurant. (W123)

#### PUBS CLOSED OR CEASED SELLING REAL ALE EAST

E1, HUNGERFORD ARMS. Watney, closed - future uncertain. (E61)

E2, DUKE OF CAMBRIDGE. Now Belhaven, ex Watney via Brent Walker, H unused. (E72)

E3, ALBERT. Now Belhaven, ex Watney via Brent Walker H removed. (E79)

E3, ROSE OF DENMARK. Now Belhaven, ex Watney via Brent Walker, H removed. (E86)

#### NORTH

N17, VOLUNTEER. Taylor Walker, H unused. (N98)

N17, WHITEHALL TAVERN. Taylor Walker, H unused. (N98)

#### SOUTH EAST

SE8, LORD CLYDE. Charrington, H unused. (SE71)

SE8, RED LION. Watney, H removed. (SE72)

SE9, WELCOME INN. Whitbread (Beefeater), reopened after refurbishment, H removed. (SE78)

SE10, CROWN. Whitbread, closed - future uncertain. (SE83)

SE10, MITRE, 338, Tunnel Ave. closed - future uncertain. (SE85)

*Continued on p.16*

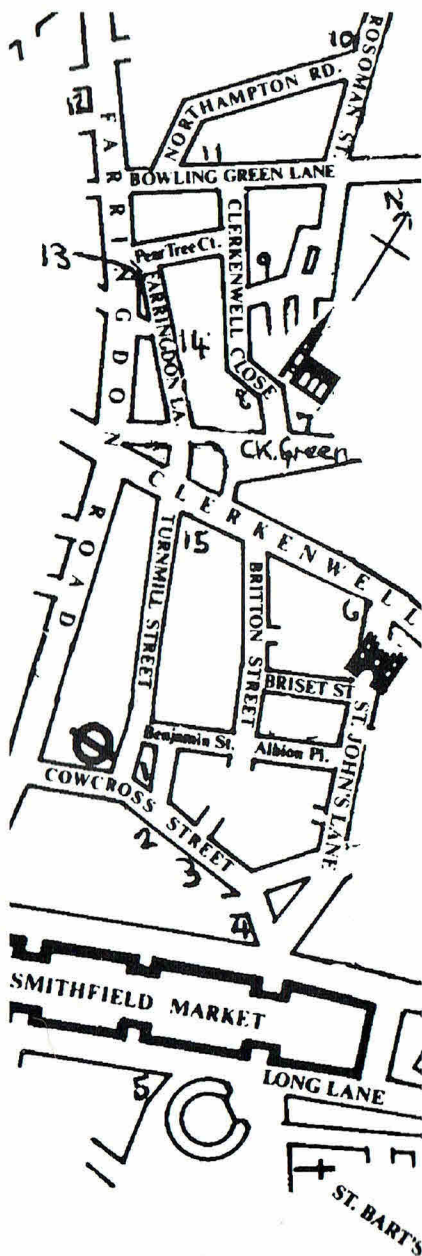
## Historicrawl: Smithfield and Clerkenwell

Time - in the form of the editorial team was snapping at my heels just before press date. So despite the fact this offering has been in preparation for 18 months and more, it is being dashed off at the last minute, with gaps left in my manuscript which hopefully will have been filled after on-the-spot final research - i.e. an unscheduled pub crawl. Be warned - most pubs mentioned do not open on weekends. This crawl visits 15 pubs with 29 real beers. We begin at Farringdon Station, formerly the city terminus of the world's first underground railway - the Metropolitan - and now served by both London Transport and the B.R. Thameslink service. Left outside the station and we find the Castle, Cawcross Street (1), Bass and Charrington IPA. Featured before in these pages, it has a pawnbrokers licence, dating back to the 1820's when King George IV found it necessary to borrow money temporarily from the landlord on security of the monarch's watch and chain.

Across the road, the three compasses (2) is on a site occupied by a pub from 1720. Attractively rebuilt after bombing in the blitz, it now serves Truman Best, Ruddles Best and County, Websters Yorkshire and Bulmers Traditional cider on the handpump.

Cowcross Street is one of the oldest thoroughfares in London, along which were driven cattle for

sale in Smithfield Market at the top, until this operation was transferred to Holloway last century.



St John's Gate



At one time nearly every building in the street was a pub. Look at their upper storey for evidence of this. Only two others remain, the Blue Posts (3) Charrington IPA and The Hope (4), Websters and Ruddles County. The latter is open from 6.30 am to 6pm, but not at weekends - this is to accommodate the market porters. Note the superb glasswork. Across the road, we pass through the magnificent victorian Smithfield Market., and turn right for the Rutland Hotel (5), also known as the Bishops Finger, for Sheperd Neame. Smithfield was originally "Smooth Field" - the meaning being obvious. This was for many years the scene of fairs and public exhibitions. Here Sir William Wallace, the scottish patriot, was judically dismantled, and many protestant martyrs were burned at the stake in the 1550's. Opposite the Rutland is the priory church of St. Bartholomew the Great. All that now remains of that priory, it was founded by Rahere, a courtier ( some versions say a jester) as the result of an oath, when seemingly on the point

of death, to found such an institution if spared. He survived, became the first Prior and had the dedication made following a revelation in a dream from that saint. Barts Hospital is of course, still very much in evidence.

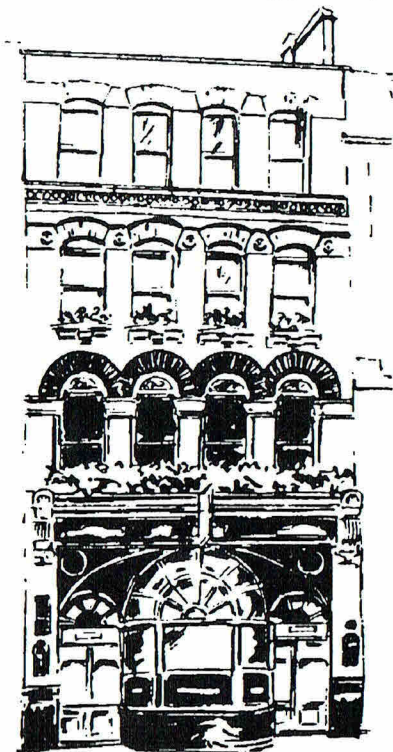
Going back through the market, we now take St John's Lane (not street) to our other historical medical connection. St John's Gate is the only mediaeval gatehouse left in London, and was the original entrance to the priory of the order of St John of Jerusalem, who developed as the Knights Hospitaller during the crusades.

This gatehouse is now the headquarters of the St John's Ambulance Brigade (descendants of the order, dissolved in 1540) and houses a fascinating museum. It was built in 1504 to replace a tower structure, and had previously been destroyed in 1381 by rebels who also beheaded the Prior. From 1765 to 1900 part was the "Old Jerusalem Tavern". In 1888 Queen Victoria granted a charter again making the Order of St John an Order of Chivalry with the monarch as its head. Almost next door, the modern Coach and Horses (6) supplies the Whitbread range, and over the road the Clerkenwell Heritage Centre has a wide range of interesting publications of an historical nature. Going westwards along Clerkenwell Road then turning right into Clerkenwell Green, we next come to the Crown (7) a Nicholson's House featured previously in London Drinker, which serves Adnams Bitter, Ind Coope Burton, Arkells 3B, Tetley and Boddingtons, plus Addlestone's Cider - cask conditioned, but on slight blanket pressure, though nonetheless very palatable.

Rather than confusing you with street directions, I will refer you to the map.

The Three Kings (8), Websters, Ruddles Best and County, is a unusually shaped corner pub which was originally the hostelry of the Benedictin *Continued on p.16* e nunnery of St Mary, whose site is partly occupied by the church of St James - built 1792 - over the road. Next time we will be visiting the Horseshoe (9 Courage) The Thomas Wethered (10 - Whitbread "free"), the Eagle (12 - Banks + Taylor) the Betsey (13 - Shepherd Neame) the City Pride (14 - Fullers) and the Turnmills (15 - free) -

Merton.



*The Hope*

## BEER BRIEFING

### LONDON BEER GUIDES UPDATE 46 Continued

SE10, ROYAL STANDARD. Watney, H unused. (SE88)

SE10, THAMES. Whitbread, H unused. (SE88)

SE14, COACH & HORSES. Acquired by Belhaven from Watney, closed, future uncertain. (SE109)

SE16, BARONS ARMS. Charrington, closed, future uncertain. (SE127)

SE18, MELBOURNE ARMS. Free House, H unused. (SE147)

SE20, RAILWAY. Acquired by Belhaven from Watney, H unused. (SE164)

BELVEDERE, PRINCE ALFRED. Courage, H removed (SE207)

#### SOUTH WEST

SW9, WARRIOR. Free House, no longer a home brew pub, H unused. (SW37)

SW11, INVITATION. Charrington, H unused. (SW40)

SW11, YORK TAVERN. Watney, closed, future uncertain. (SW41, U32)

SW18, FREEWAYS. Watney (fizz), closed, future uncertain. (SW51)

SW18, SPENCERS. Watney, closed, future uncertain. (SW54, U38)

#### WEST

W3, WINDMILL. Watney, H removed. (W65)

W11, GOLDEN CROSS. Brent Walker Free House, renamed MARKET BAR, H removed. The "Red Revolution" decor has finally gone. (W88)

W12, NEW TELEGRAPH TAVERN. Acquired by Belhaven from Truman, H removed (W91)

### OTHER CHANGES TO PUBS & BEER RANGES

#### CENTRAL

EC4, CITY RETREAT. + Young: Bitter.

Formerly DIZZY'S. (E42, U43)

WC2, DEVEREUX. + John Smith: Yorkshire Bitter. (W53)

#### EAST

E1, ROSE & PUNCHBOWL. Now Belhaven, ex Watney via Brent Walker (fizz). (E66)

E2, BLACK HORSE. Now Belhaven, ex Truman via Brent Walker (fizz). (E70)

E2, BROWNS. Reverted to former name HORNS. (E71, U39)

E2, CROWN. Now Belhaven, ex Watney via Brent Walker (fizz). (E71)

E2, JOINERS ARMS. Now Belhaven, ex Watney via Brent Walker (fizz). (E73)

E2, KING & QUEEN. Now Belhaven, ex Truman via Brent Walker (fizz). (E73, U41)

E2, QUEEN VICTORIA. Now Belhaven, ex Watney via Brent Walker (fizz). (E74)

E2, ROYAL ALFRED. Now Belhaven, ex Watney via Brent Walker (fizz). (E77)

E2, ROYAL OAK. Now Belhaven, ex Truman via Brent Walker (fizz). (E77)

E3, ALBION. Now Belhaven, ex Watney via Brent Walker (fizz). (E79)

E3, BRIDGE HOUSE. Now Belhaven, ex Watney via Brent Walker (fizz). (E81)

E3, OLD DUKE OF CAMBRIDGE. Now Belhaven, ex Watney via Brent Walker (fizz). (E84)

E3, RISING SUN. Now Belhaven, ex Watney via Brent Walker (fizz). (E86, U40)

E5, HOPE & ANCHOR. Now Belhaven, ex Watney via Brent Walker (fizz). (E94)

E8, BREWERY TAP. Now Belhaven, ex Watney via Brent Walker (fizz). (E105)

E8, FLORFIELD ARMS. Now Belhaven, ex Truman via Brent Walker. - Beers listed. + Ind Coope: Burton Ale. + Tetley: Bitter. (E108)

E8, LEE ARMS. Now Belhaven, ex Watney via Brent Walker (fizz). (E108)

E8, MARKET HOUSE. Now Belhaven, ex Watney via Brent Walker (fizz). (E109)

E9, DAGMAR ARMS. Now Belhaven, ex Watney via Brent Walker. In full Belhaven red livery but still no real ale. Formerly ZANZIBAR. (E116)

E9, PLOUGH. Now Belhaven, ex Truman via Brent Walker (fizz). (E115)

E9, STAG. Now Belhaven, ex Truman via Brent Walker (fizz). (E115)

E14, PRINCESS OF WALES. Now Belhaven, ex Watney via Brent Walker (fizz). (E142)

E14, ROYAL NAVY. Now Belhaven, ex Watney via Brent Walker (fizz), closed, future uncertain. (E143)

E14, SIR CHARLES NAPIER. Now Belhaven, ex Watney via Brent Walker (fizz). (E143)

#### SOUTH EAST

SE1, GRANGE. Now Belhaven, ex Truman via Brent Walker. In red Belhaven livery but no real ale. (SE25)

SE1, PRINCE OF WALES, 23 Lant Street. Now Belhaven, ex Watney via Brent Walker (fizz). (SE35)

SE8, ODD BALL. Renamed SPORTING HOUSE, still fizz. (SE71)

SE8, BRADLEYS. Reverted to former name HARP OF ERIN, still fizz. (SE68)

SE8, WINSTONS. Renamed BLUSHERS. (SE73)

SE10, BELL. Now Belhaven, ex Watney via Brent Walker. - Flowers: IPA. + Tetley: Bitter. (SE82)

SE10, BRITISH SAILOR. Acquired by Belhaven from Watney. - Webster: Yorkshire Bitter. + Ind Coope: Burton Ale. + Tetley: Bitter (SE82)

SE10, GREENWICH INN. - beers listed.

+ Bateman: XB. + Flowers: IPA. + Marston: Pedigree. (SE84)

SE10, SHIP & BILLET. Renamed FROG & RADIATOR. - Truman: Best Bitter. + Ruddell: Best Bitter, County. + Webster: Yorkshire Bitter. (SE88)

*Continued on p.20*



**First question:** , What are the best Free Houses in North London

**Answer:** *Those run by  
J. D. Wetherspoon Organisation*

**Second question:** Where are they?

**Answer:-**

HARRINGAY  
**OLD SUFFOLK PUNCH**  
10-12 Grand Parade N4

HARRINGAY  
**THE MORTIMER ARMS**  
405 Green Lanes N4

STROUD GREEN  
**WHITE LION OF  
MORTIMER**  
125/127 Stroud Green Road N4

WEST GREEN  
**THE GOAT**  
414-6 West Green Road N15

STOKE NEWINGTON  
**THE TANNERS HALL**  
145 High Street N16

TOTTENHAM  
**THE BOAR**  
413 Lordship Lane N17

BRUCE GROVE  
**THE ELBOW ROOM**  
503-505 High Road N17

TOTTENHAM  
**THE MOON UNDER  
WATER**  
423 Lordship Lane N17

RIVER LEA  
**THE NARROW BOAT**  
Reedham Close N17

ARCHWAY  
**THE DOG**  
17/19 Archway Road N19

HOLLOWAY  
**J J MOONS**  
37 Landseer Road N19

KINGSBURY  
**JJ MOON'S**  
553 Kingsbury Road NW9

WALTHAMSTOW  
**THE DRUM**  
557/9 Lea Bridge Road E10

WALTHAMSTOW  
**THE COLLEGE ARMS**  
807 Forest Road E17

BARNET  
**THE MOON UNDER  
WATER**  
148 High Street, Barnet

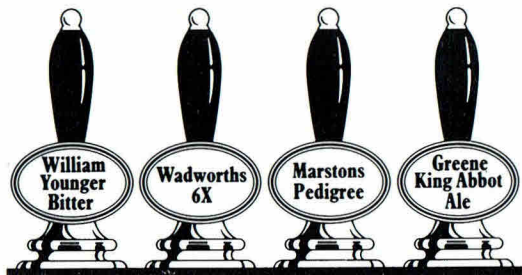
ENFIELD  
**THE MOON UNDER  
WATER**  
115/7 Chase Side Enfield

**Final (Vital) question:** What do they provide?

**The final answer:** *Traditional atmosphere (no music)  
Fine victorian decor  
Splendid Real Ales*



767 High Road Finchley  
London N12 8LB



---

## BOOZERS BOOKSHELF

Make sure your liquid library serves full measure. Don't go short of the best of British books. Check this list and ask for a top-up now - at special CAMRA members prices.

**BEER, BED & BREAKFAST:** Where to sup and stay overnight in Britain's pubs. Edited by Roger Protz. Second edition. **£3.95.**

**GOOD CIDER GUIDE:** David Kitton's book on Britain's big apple - traditional farmhouse scrumpy. **£3.50.**

**PUBS FOR FAMILIES:** How to find good pubs that cater for children. Edited by Jill Adam and Neil Hanson. **£3.50.**

**NEW BEER GUIDE:** Brian Glover's guide to Britain's small brewery revolution, and where to find their beers. **£3.50.**

**CLASSIC COUNTRY PUBS and CLASSIC TOWN PUBS:** A two-volume, picture book tour by Neil Hanson and 200 outstanding houses. **£10.95 each.**

**LOCAL BREW:** Mike Dunn's hardback guide to Britain's traditional breweries and their beers. **£11.95.**

**GREAT BRITISH BEER BOOK** by the one and only Roger Protz. All you ever wanted to know about Britain's favourite drink. **£4.95.**

**CAMRA DICTIONARY OF BEER** by Brian Glover. From Abbot Ale to Zymurgy. Beer brands and brewing terms explained. **£2.95.**

**POCKET BEER BOOK:** A guide to beers around the globe by the internationally famous writer Michael Jackson. **£4.95.**

**TIME GENTLEMEN PLEASE:** A guide to Britain's pub heritage - and the dangers it now faces. **£3.50.**

**THE ENGLISH PUB:** Two Americans delightful eye view of our famous institution. Well illustrated in colour. **£9.95.**

**VICTORIAN PUBS:** Mark Girouar's classic book on the era when pub architecture was at its peak. **£9.95.**

**TWO BEERS, MY FRIEND WILL PAY:** If you've read this far, you'll need a drop of laughter. Try Brian Glover and Neil Hanson's book crammed with pub cartoons and anecdotes. **£2.25.**

*To order your copies, write to **Boozers Bookshelf, CAMRA, 34 Alma Road, St. Albans, Herts AL1 3BW**, making your cheque payable to CAMRA Ltd. All prices include p&p.*



## APPLICATION FOR CAMRA MEMBERSHIP

I/We wish to join the Campaign for Real Ale Limited, and agree to abide by the Memorandum and Articles of Association of the Campaign.

NAME(S) \_\_\_\_\_ DATE \_\_\_\_\_

ADDRESS \_\_\_\_\_

POSTCODE \_\_\_\_\_

SIGNATURE \_\_\_\_\_ TELEPHONE NUMBER(S) \_\_\_\_\_

I/We enclose remittance for individual/joint membership for one year: U.K. £9 ☐

Overseas £12 ☐

I/We would like to receive further information about CAMRA ☐

*Please send your remittance (payable to CAMRA Limited) with this application form to:*  
**THE MEMBERSHIP SECRETARY, CAMRA LTD., 34 ALMA ROAD, ST. ALBANS, HERTS. AL1 3BW**



---

## BIG BREWERS HIT THE CONSUMER

Less than a week after Lord Young let the Big Six off the hook with his modified version of the MMC recommendations, the brewers demonstrated their disregard for both politicians and the consumer by announcing hefty price rises for a pint of beer.

Bass started the ball rolling and were quickly followed by Whitbread, with the rest of the Six following suit. The average level of the price increase is around six to eight pence which means that London drinkers can now expect to pay £1.20 or more for their pint.

The Big Six claimed the increases had nothing to do with Lord Young's backdown on the MMC report, instead they said they were based on price increases for raw materials, increased production costs and inflation.

It is hard to see how the nationals can justify such large price increases when they have all announced record profits for the last year. Whitbread in particular trumpeted their doubling of profits over last year to £223 million with others as follows: Bass, £448m; S&N, £138m and Allied with £502 million. GrandMet and Courage don't publish separate profit figures for brewing.

It is difficult to see the increases being introduced by coincidence but not difficult to view them as a means of telling Lord Young exactly what they thought of him and the MMC report. Now that their monopoly has remained unbroken the Big Six are showing it is business as usual and they can abuse their stranglehold on the market in any way they like.

This has to be true if the reasons for the price rises are taken into consideration. The cost of raw materials has actually gone down in recent months whilst the increases are nearly double the inflation rate. One of the central planks of the MMC's recommendations for attacking the power of the Big Six was the fact that the cost of a pint of beer has risen 15 per cent higher than inflation. Half of the cost of a barrel is made up of duty and this year one of

the highlights of the Chancellor of the Exchequer's budget was the non-increase in the amount of duty being levied.

A Bass spokesman even had the audacity to say advertising costs were also to blame. The vast majority of advertising spending is for lager and even here the purpose is not for increasing sales but to carve out a bigger market share for the proliferating number of brands. Quite why the consumer should pay for the privilege of watching the brewers try to outdo each other with pointless TV ads for fake lager is beyond the pale.

But the poor consumer has always been the well-spring of the nationals' greed for greater brewing profits which is why the MMC was asked to investigate. They found that a monopoly existed and that it was against the public interest - in short, something should be done about it.

In failing to tackle the problem as strongly as he should, Lord Young has given the Big Six the freedom to go on making huge profits from the consumer. The MMC report was meant to protect the drinker, instead the modifications have already been shown to have not made the national brewers afraid of their actions despite the three year review planned by the Government.

Lord Young described this as the "Sword of Damocles" hanging over the industry saying, "If things have not improved by then, the Director General of Fair Trading will set things in motion again."

Following the recent reshuffle of Government Ministers the drinking public can perhaps have a little hope of improvement in their chance of a fair deal, as Lord Young's successor has recently announced his intention of taking positive action against the large brewers. We await details of his plans with interest. However, one benefit of the price increases is that it has thrown the independent brewers once more into the limelight as the only true champions of choice and value for money. Just as the guest beer policy must create greater awareness of their beer the competitive price of a pint in their pubs must now make it even more worthwhile in seeking them out.

*Continued on p.21*

## BEER BRIEFING

### LONDON BEER GUIDES UPDATE 46 Continued

**SE10, WHITE SWAN.** Now Belhaven, ex Watney via Brent Walker (fizz). (SE89)

**SE14, RISING SUN.** Now Belhaven, ex Truman via Brent Walker. - beers listed.  
+ Benskins: Best Bitter. + Tetley: Bitter (SE112)

**SE15, GOLDEN LION.** Now Belhaven, ex Truman via Brent Walker (fizz). (SE119)

**SE15MARLBOROUGH HEAD.** Now Belhaven, ex Watney via Brent Walker (fizz). (SE120)

**SE15, SURREY VIEW TAVERN.** Now Belhaven, ex Watney via Brent Walker (fizz). (SE124)

**SE16, CLIPPER.** - beers listed except  
Flowers: Original Bitter. + Marston:  
Pedigree. + Whitbread: Best Bitter (cask  
version on test market). (SE129)

**SE16, SHIP & WHALE.** - Webster: Yorkshire  
Bitter. + Truman: Best Bitter. (SE133)

**SE16, SHIP YORK.** - Ruddle: Best Bitter,  
County. + Truman: Best Bitter. (SE133)

**SE20, MAPLE TREE.** + Charrington: IPA.  
+ John Smith: Yorkshire Bitter. (SE163)

**SE25, ALBERT TAVERN.** - Young: Special.  
(SE182)

**SE25, CHERRY TREES.** - Marston: Pedigree.  
- Truman: Best Bitter. + Ruddle: Best  
Bitter, County. (SE184)

**SE25, SHIP.** - beers listed except Greene  
King: Abbot Ale. + Boddington: Bitter.  
+ Flowers: IPA, Original Bitter.

+ Wethered: SPA. + Whitbread: Pompey  
Royal. + Castle Eden: Bitter. (SE187)

**SE25, SPREAD EAGLE.** Renamed PLEASANT  
PHEASANT. + Ruddle: Best Bitter, County.  
Now a Free House with Grand Met tie, ex  
Watney. (SE187)

**BECKENHAM, GEORGE INN (YE OLDE).** - Friary  
Meux: Best Bitter. + Young: Bitter. (SE205)

**BEXLEYHEATH, DUKE OF EDINBURGH.** + Courage:  
Directors Bitter. + John Smith: Yorkshire  
Bitter. (SE212)

**BIGGIN HILL, BLACK HORSE.** - Tetley: Bitter.  
+ Gales: HSB. (SE215)

**BIGGIN HILL, FLYING MACHINE.** - Flowers:  
Original Bitter. + Greene King: Abbot Ale.  
+ Marston: Pedigree. (SE215)

**BROMLEY COMMON, CROOKED BILLET.** Is a  
Harvester Restaurant. Delete reference to  
disco and poor beer. (SE222)

**BROMLEY COMMON, PALACE TAVERN.** + Flowers:  
Original Bitter. + Marston: Pedigree.  
(SE223)

**BROMLEY COMMON, PLOUGH.** - Flowers:  
Original Bitter. + Greene King: Abbot Ale.  
(SE223)

**CHISLEHURST, QUEENS HEAD.** + Young: Bitter  
(SE227)

**CRAYFORD, LORD NELSON.** + Webster:  
Yorkshire Bitter. Prominent handpumps.  
(SE232)

**CRAYFORD, ONE BELL.** - Ind Coope: Bitter.  
+ Tetley: Bitter. + Young: Bitter. (SE232)

**CROYDON (Shirley), ORCHARD.** - Ind Coope:  
Bitter. - King & Barnes: Old. + Adnams:  
Broadside. (SE246)

**KESTON, KESTON MARK.** - Flowers: Original  
Bitter. + Greene King: Abbot Ale. (SE263)

**ST MARY CRAY, BLUE ANCHOR.** - Ind Coope:  
Bitter. + Taylor Walker: Best Bitter.  
+ Young: Bitter. (SE269)

**ST MARY CRAY (St Paul's Cray), BROOMWOOD.**  
- Ind Coope: Bitter. + Taylor Walker: Best  
Bitter. (SE270)

**SOUTH CROYDON, CROHAM ARMS.** - Ind Coope:  
Bitter. Burton Ale+ Friary Meux: Best  
Bitter. + Gales: HSB. (SE276)

**SOUTH CROYDON, LE REFUGE.** - King &  
Barnes: Sussex Bitter. + Fuller: London  
Pride. + Ruddle: Best Bitter. (SE278)

#### SOUTH WEST

**SW2, TWO WOODCOCKS.** - Brixton beers  
listed. + Ruddle: County. + Truman: Best  
Bitter. (SW19)

**SW8, BUTCHERS ARMS.** Renamed BATTERSEA  
ARMS. - beers listed. + Ruddle: County.  
(SW33)

**SW11, PRINCE OF WALES,** 339 Battersea Park  
Road. - Battersea beers listed. + Webster:  
Yorkshire Bitter. No longer a home brew  
pub, equipment disused. (SW41)

**SW11, SAVILLES.** Renamed DOG & DUCK.  
+ Ruddle: Best Bitter, County. (SW41)

**SUTTON, BELMONTs.** Renamed BELMONT.  
+ Ruddle: County. Now upmarket pub with  
carvery restaurant. (SW76)

**SUTTON, CRICKETERS INN.** - Ind Coope:  
Bitter. + Benskins: Best Bitter. (SW76)

#### WEST

**W2, ARTESIAN.** Renamed PRINCE BONAPARTE,  
still fizz. (W58)

**W4, MANOR TAVERN.** + John Smith: Yorkshire  
Bitter. (W69)

**W5, THREE PIGEONS.** + John Smith: Yorkshire  
Bitter. Now a one bar cafe-bar style pub  
but with good beer. (W73)

**RUISLIP, DEANE ARMS.** Renamed MIDDLESEX  
ARMS. + Taylor Walker: Best Bitter.  
+ Tetley: Bitter. (W137)

*Views expressed in this publication are  
those of their individual authors, and are  
not necessarily endorsed by the Editorial  
team or the Campaign for Real Ale.*



---

# A SOUTHERN STRONGHOLD

E.S.B. (1050°) Strong Full  
Flavoured Beer with a  
Proud Tradition

BITTER (1035°) Fine Lancashire  
Style Pale Bitter

MILD (1034°) Dark, Succulent,  
Sweet and Beautiful!

**Born 1880 - Still  
Brewing STRONG!**

**MITCHELLS --  
NATURALLY!**



AVAILABLE NOW FROM  
**MITCHELLS OF LANCASTER**  
BREWED, BY THE FAMILY, RUN BY THE  
FAMILY AND ENJOYED BY  
THE FAMILY  
TEL: 0524 66580  
ASK FOR MAX TAYLOR

---

## UP TO SCRATCH

Welcome to the ranks of real ale, one Michael Ramsey of Barking, Essex. He has given up drinking lager because it brought him out in an unsightly rash.

Most people just see red when told the price of a pint of lagerade.

Said Michael, now 22 "I've been drinking lager since I was 16 but I never dreamt of associating it with the rash".

As the years passed and the rash got nastier he went to the doctor who at first suggested he had an allergy to perfume. So home he went and told girl friend Cherer Twohig (I kid you not) to throw her Chanel in the canal.

But it made no difference. Michael just got spottier and went back to the quack. Intensive allergy tests followed and finally the grim truth was revealed: he was allergic to the lout's delight.

"I was stunned," said Michael. "Fancy not

being able to drink lager any more. It's bitter for me now!"

He did not reveal which lager had been his favourite tipple. Not Red Stripe, I trust.

---

## A LIKELY STORY!

Did you hear about the Big 7 licensee who was in bother for chucking Best Bitter all over a troublesome customer?

Quite right, too: people who live in Bass houses shouldn't throw Stones.

From the Alesman

---

*Continued from p.19*

Britain's drinkers would be best advised to start taking their ale in the pubs of the small brewers if they are disgruntled at the prospects of swingeing and totally arbitrary price increases from the Big Six. It may be difficult to avoid the dominance of the big brewers' tied estates but voting with the feet is the only way to tell the Big Six that they cannot get away with it.

---

---

From the London Drinker 10 years ago this Month

# 'Drinker'contest

Our cover this month shows the Price Lists in two London pubs (or to be strictly accurate, one pub and one Station bar). Both carry a wide selection of Real Ales, many of which are common to both establishments. The amenities in the two places are not all that different. Only the prices vary widely.

One of these establishments is in the running for our "Most Overpriced London Pub of the Year" award; the other is likely to prove a contender for "Best Value London Pub of the Year".

LONDON DRINKER is running this two-part contest as an alternative to the EVENING STANDARD's "Pub of the Year" Competition because we feel that the STANDARD has not got its own format right. With beer prices having taken something of a knock recently with the Brewers' rise and the Budget, we believe that a lot of drinkers are becoming more and more price-conscious. The high priced pub whose list is pictured on the cover is in fact a finalist in the STANDARD's competition, which suggests that value for money is not a criterion which will be taken into account by the Judging Panel. Presumably they will discuss with great eagerness the merits of a pub which has freshly squeezed orange juice, and whether it rates higher than another establishment which can offer you passion fruit juice for your lager, but while such crucial issues are being decided, it will be some lackey from the paper who has to hand over the money (if drinks for the panel of nonentities and sub-stars are not free, that is). The judges will in all probability not be asked to take price and value into account, and we regard this as a trifle unrealistic.

The form opposite has two sections, one for each part of the contest. Fill in either or both with the details as indicated and send it off to us. The form will appear again next month, and the final closing date will be October 31st. The names of the winners, and of as many runners-up as deserve mention, will be published in December's LONDON DRINKER, and suitable awards will be made to the winners. And here you have the chance to win a couple of gallons of ale from us. When you send in the pub details, suggest in the space provided, a suitable prize for the pub which wins the "Most Overpriced" Section. The best idea will, if it is practicable, be implemented and the suggestor will get the two gallons.

Please remember that we are not looking for the highest priced pint of beer, or the cheapest pint, but the best value or poorest value. A pint of strong beer like Ruddles' County or Old Peculier will obviously cost more than a pint of Young's Mild. So please take into account what the brews are when submitting your entry.

---

Congratulations are due to Gerry Colvin, licensee of the Seven Stars in Footscray. He recently won the South Eastern Regional section of the "Best-Kept Cellar" competition for Charrington Houses. The first-rate pint of IPA from this Good Beer Guide listed pub is only 35p too. Yet again we see an example of quality going hand in hand with value.

---



Below is the price list referred to oposite and is reproduced from the front cover of the September 1979 edition of London Drinker.

	<u>PUB 'A'</u>	<u>PUB 'B'</u>
SAM SMITH OLD BREWERY BITTER	41p	
WATNEY LONDON BITTER	-	50p
RAYMENTS BBA	41p	45p
GREENE KING ABBOT	46p	52p
RUDDLES BITTER	41p	46p
RUDDLES COUNTY	46p	54p
ARKELLS KINGSDOWN	-	78p

Ten years on and those of us who drink in London Still face overpriced beer. Just ad £1 to the above and we almost have current prices.



## NEWS FROM FULLERS

### HAND PUMPS!

### HAND PUMPS!

HAVE ARRIVED AT:-

THE CASTLE  
36 St. Mary's Road  
Ealing  
W5

THE SIX BELLS  
148 High Street  
Brentford  
Middlesex

SUPPORT OUR LATEST CONVERTS TO REAL ALE AND VISIT THEM SOON

# FULLERS



J & W Nicholson is a group of high quality London Inns which specialise in selling a range of English Country Ales. The pubs have an authentic London pub atmosphere and also sell a selection of traditional food.

Our recommendation for the Month of September is:

*The Crown & Two Chairmen*

31 Dean Street

Soho

London W1

01-437 8192

Recently refurbished, the Crown & Two Chairmen dominates the corner of Dean Street and Bateman Street in Soho's film land.

On the first floor, a newly created bar offers good food with a range of beers in an up to date atmosphere. The ground floor has been sensitively refurbished to its former glory.

**Open 12 - 11 Monday to Saturday**

**12-3 & 7-10.30 Sunday**

**Also open for breakfast 8am-11am**

**Monday - Friday**

Ales: Adnams, Arkells, Boddingtons, Draught Burton Ale, Tetley Bitter, Marston Pedigree. Cask conditioned Addlestone Cider.

---



---

## DEAR DIPSY



Dear Dipsy

I am most perturbed by the use of pseudonyms by those who send in completed crosswords to your Magazine. Are they shy of getting the credit for completing such a superbly compiled puzzle? Names like Count Famine, B. A. Prat, Dengie 100, and worst of all Bill Andrews. Who in their right mind would call a child names like these.

Surely the Editors (God Bless 'em) should weed out these pseudonyms and insist that all entrants own up to their achievements.

*Evan Izzahere*

Dear Evan

I can understand your concern, but you must realize that sometimes the geniuses of this world are shy and do want to hide behind these other names so that they can then enjoy a normal social life, drinking with ordinary mortals of limited intelligence (such as the Editors of this magazine).

*Dipsy*

*That is Quite Enough ... Ed*

Dear Dipsy

We have a spiffing cheese plant in our Officers' Mess. The trouble is that it has grown so well over the years that it is almost taking the place over. Do you think the fact that it has been fed for so long on the overspill from behind the bar has got anything to do with its prodigious size and what do you think we should do about it?

*Squadron Leader Fortescue,  
RAF Cottesmore*

Dear Squaddie

It has obviously benefitted from its nutritional diet and I firmly recommend that you keep it up perhaps with a little discreet pruning. The alternative does not bear thinking about - have you seen a giant cheese plant with withdrawal symptoms?

*Dipsy*

Dear Dipsy

I have been offered sanctuary in one of the Fosters' Lager breweries. Do you think I should accept - they say it could be like one long garden party for me?

*Salman Rusty, No fixed abode*

Dear Salman

Have you not heard of a fête worse than death?

*Dipsy*

---

### THE TILTED GLASS

(A FREE HOUSE)

**TALLY-HO CORNER,  
359 BALLARDS LANE,  
FINCHLEY, LONDON N12 8LJ  
Telephone: 01-445 2556**

*A VARIETY OF REAL ALES*

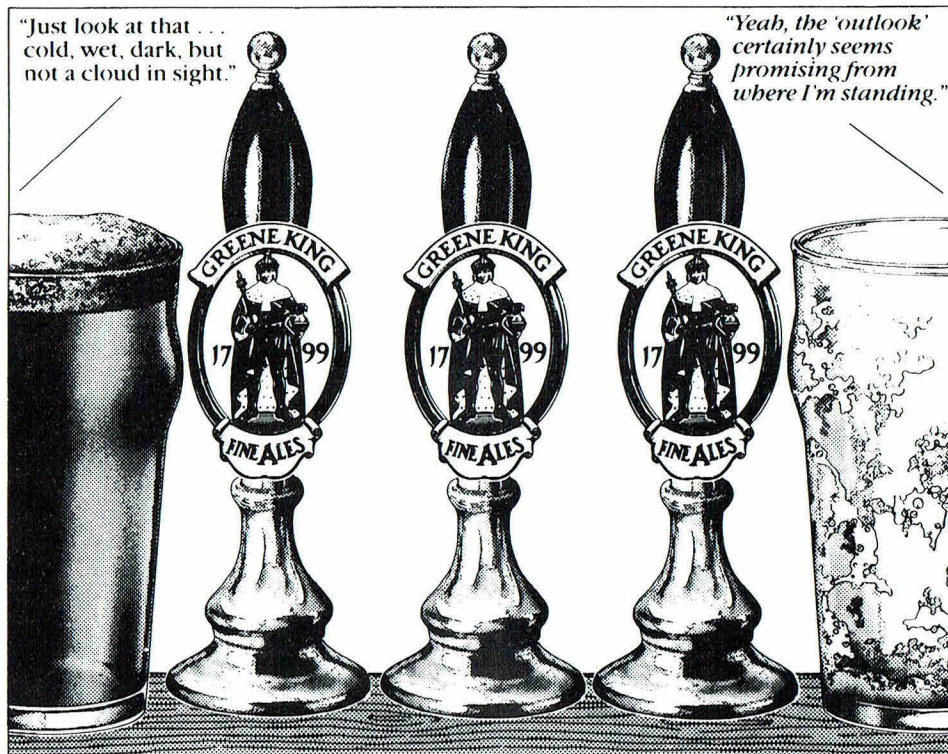
*PUB GRUB—  
MORNINGS & EVENINGS*

**NO KEG BEERS IN THIS HOUSE**

**BODDINGTONS BITTER  
YOUNGS SPECIAL  
RUDDLES BEST  
WEBSTERS YORKSHIRE  
ADNAMS BITTER**

**BUSES 26, 125, 236**

**Nearest Underground—WOODSIDE PARK**



WETHERED BITTER • WETHERED SPA • FLOWERS ORIGINAL

## KINGS HEAD

59 ESSEX ROAD • LONDON N1

01-226 1825

HOT AND COLD FOOD AVAILABLE • CARVERY ROASTS

OPEN ALL LICENSED HOURS • HAPPY HOUR 5.30 - 6.30pm



Where to buy Continued

# OUTLETS - SOUTH WEST/WEST PUBS

SW1 BARLEY MOW  
 SW1 BUCKINGHAM ARMS  
 SW1 FOX & HOUNDS  
 SW1 GROUSE & CLARET  
 SW1 MORPETH ARMS  
 SW1 ORANGE BREWERY  
 SW1 PARVIORS ARMS  
 SW1 RED LION  
 SW1 UNICORN, Victoria Place  
 (above Station Concourse)  
 SW2 HOPE & ANCHOR  
 SW2 TWO WOODCOCKS  
 SW3 ROSE  
 SW3 SURPRISE  
 SW4 RAILWAY  
 SW6 WHITE HORSE  
 SW7 ANGLESEA ARMS  
 SW8 SURPRISE  
 SW8 NOTTINGHAM CASTLE  
 SW10 CHELSEA RAM  
 SW10 FERRET & FIRKIN  
 SW11 BEEHIVE  
 SW11 PRINCE OF WALES  
 SW11 WOODMAN  
 SW12 BEDFORD HOTEL  
 SW12 DUKE OF DEVONSHIRE  
 SW12 NIGHTINGALE  
 SW12 PRINCE OF WALES  
 SW14 HARE & HOUNDS  
 SW14 RAILWAY TAVERN  
 SW15 ARAB BOY  
 SW15 FOX & HOUNDS  
 SW15 JOLLY GARDENERS  
 SW15 WHITE LION  
 SW16 GREYHOUND  
 SW16 PIED BULL  
 SW17 CASTLE  
 SW17 GORRINGE PARK HOTEL  
 SW18 COUNTY ARMS  
 SW18 THE GRAPES  
 SW18 SPREAD EAGLE  
 SW19 ALEXANDRA  
 SW19 GROVE  
 SW19 PRINCESS ROYAL  
 SW19 PRINCE OF WALES  
 SW19 TRAFALGAR  
 CHESSINGTON, NORTH STAR  
 KINGSTON, CARDINAL  
 KINGSTON, COCOANUT  
 KINGSTON, DRUIDS HEAD  
 KINGSTON, FLAMINGO  
 BREWERY COMPANY  
 KINGSTON, KELLY ARMS

KINGSTON, NEWT & FERRET  
 KINGSTON, WYCH ELM  
 MITCHAM, RAVENSBUARY ARMS  
 NEW MALDEN, RAILWAY  
 RICHMOND, ORANGE TREE  
 RICHMOND, WHITE CROSS  
 SURBITON, BUN SHOP  
 SURBITON, VICTORIA  
 WEYBRIDGE, PRINCE OF WALES,

Oatlands Park  
 W1 ARGYLL ARMS  
 W1 RED LION Kingly Street  
 W2 ARCHERY TAVERN  
 W2 ROYAL STANDARD  
 W3 KINGS ARMS  
 W3 KINGS HEAD  
 W3 RED LION & PINEAPPLE  
 W4 WINDMILL  
 W5 FOX & GOOSE  
 W5 GREYSTOKE  
 W5 PLOUGH  
 W5 RED LION  
 W5 ROSE & CROWN  
 W6 BLACK LION  
 W6 BROOK GREEN HOTEL  
 W6 RICHMOND ARMS  
 W7 ROYAL VICTORIA  
 W9 TRUSCOTT ARMS  
 W10 NARROW BOAT  
 W10 VILLAGE INN  
 W11 FROG & FIRKIN  
 W12 CROWN & SCEPTRE  
 W13 THE FORESTER  
 BRENTFORD, BEEHIVE  
 BRENTFORD, BREWERY TAP  
 BRENTFORD, LORD NELSON  
 CRANFORD, QUEENS HEAD  
 GREENFORD, BLACK HORSE  
 HAMPTON HILL, WINDMILL  
 HAMPTON COURT, KINGS ARMS  
 HARLINGTON, CROWN  
 HARMONDSWORTH, CROWN  
 HILLINGDON, RED LION  
 HILLINGDON, STAR  
 HOUNSLOW, CHARIOT  
 HOUNSLOW, CROSS LANCES  
 HOUNSLOW, EARL RUSSELL  
 SOUTHALL, BEACONSFIELD  
 ARMS  
 SOUTHALL, OLD OAK TREE  
 SOUTHALL, SCOTSMAN  
 SUDBURY, BLACK HORSE  
 TEDDINGTON, QUEEN DOWAGER  
 TWICKENHAM, EEL PIE  
 TWICKENHAM, POPE'S GROTT  
 TWICKENHAM, PRINCE ALBERT  
 WHITTON, ADMIRAL NELSON

# CLUBS

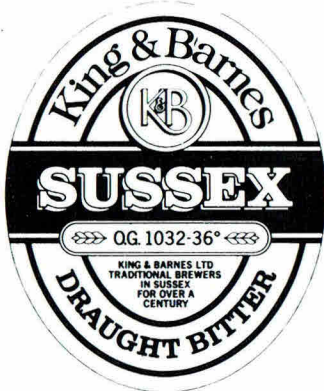
W1 Polytechnic of Central London  
 S.U. Bar, 104 Bolsolver Street  
 W3 LT District Line Social Club,  
 Park Place

# OUTSIDE LONDON

BRIGHTON, NOBLES BAR, New  
 Road  
 BRIGHTON, HAND IN HAND,  
 Upper St James Street.  
 BRIGHTON, QUEENS HEAD,  
 Opposite Station.  
 COLCHESTER, ODD ONE OUT, 28  
 Mersea Road.  
 ELLAND (Yorks), BARGE &  
 BARREL.  
 HITCHIN (Herts), NEW FOUND  
 OUT INN, Stevenage Road.  
 LEWES, BREWERS ARMS, High  
 Street.  
 MANCHESTER, JOLLY ANGLER,  
 Ducie Street  
 POTTERS BAR (Herts), CHEQUERS,  
 Coopers Lane.  
 READING, HOOK & TACKLE,  
 Katesgrove Lane.  
 SALISBURY (Wilts), WYNDHAM  
 ARMS, Estcourt Road.  
 STEVENAGE (Herts) RED LION,  
 High Street, Old Town.  
 SOUTHAMPTON, JUNCTION INN,  
 Priory Road, St Denys.  
 TILLINGHAM (Essex), CAP &  
 FEATHERS, South Street.  
 WINCHESTER (Hants), GREEN  
 MAN, Southgate Street.  
 WORTHING (Sussex), WHEAT-  
 SHEAF, Richmond Road.  
 WORCESTER, BREWERY TAP &  
 BREWERY, 50 Lowesmoor.

Do you have difficulty in getting  
 your copy of London Drinker?  
 If so, please ask your local outlet  
 to increase its order. It helps us  
 greatly to know of increased or-  
 ders before printing as we work  
 to a tight budget. It also ensures  
 that potential readers are not  
 disappointed.





## WHERE TO FIND **SUSSEX IN LONDON**

### THE ALBERT ARMS

82 High Street, Esher.

### THE APPROACH TAVERN

47 Approach Road, London E2

### BOATERS

Lower Ham Road, Kingston

### THE BRICKLAYERS ARMS

63 Charlotte Road, London E2

### THE BRITISH OAK

Robin Hood Lane, Poplar, London

### BURTES FREE HOUSE

237 Wandsworth Road, London SW8

### THE CARTOON

177/181 London Road, W Croydon

### THE CLARET WINE BAR

33 The Broadway, Cheam

### THE CLARET WINE BAR

5 Bingham Corner

Lower Addiscombe Road, Croydon

### THE CONQUEROR

2 Austin Street, London E2

### THE HOLE IN THE WALL

Mepham Street, Waterloo Station

### THE HOP EXCHANGE

149 Maple Road, Penge, London

### THE JOLLIFFE ARMS

London Road, North Mersham

### THE LION

182 Pawsons Road, Croydon

### THE LITTERN

118 Oldfield Lane South, Greenford

### THE ORLEANS

Orchard Road, Shirley

### THE RAILWAY TAVERN

Ewell Road, Surbiton, Surrey

### THE TWO BADGERS

High Elm Golf Course, Farnborough, Kent

### THE TRAFALGAR

High Path, Merton SW19

### THE TWO CHAIRMEN

39 Dartmouth Street, London SW

### THE VICTORIA

56 Buckingham Palace Road, London SW

### THE WELLINGTON TAVERN

81/83 Waterloo Road, London SE1

### THE WESTMINSTER ARMS

9 Storeys Gate, London SE1

### WOODIES FREEHOUSE

Thetford Road, New Malden

### YE OLDE BRIDGE HOUSE

215 Tower Bridge Road, London SE1

# King & Barnes

## FINE SUSSEX ALES