



Nov
1985

15p

LONDON DRINKER



Photo: John Elliott

The White Cross, Richmond see P.25

Vol
7

Produced by the London branches of the Campaign for Real Ale Ltd

No 10

BRANCH DIARY

If your branch is not mentioned please ring the branch contact. Dates for November of which we have been notified are as follows. Branches please send information to Andy Pirson. Branch contacts page 15

ALL LONDON BRANCHES: Wed 27 (7.30 for 8.00) Branches collection of London Drinker. LEATHER EXCHANGE, Leather Market Street, SE1. London Drinker Editors' open evening; everyone welcome. Sat 14 Dec (8.00) All London Christmas Party. FLEETWOOD (a new Fullers pub), Wilson Street, EC2. As this is a private party open to CAMRA members only, membership cards will need to be produced. For further details contact Anne Lodge, Tel: 01-888 5300.

EAST LONDON & CITY: TUE 5 (8.00) Branch Meeting. GEORGE, 28 Old Bailey, EC4 — Thur 7 (8.30) Social. J.J's, 180 Brady Street, E1 — Sat 9 Bow Crawl. Start LITTLE DRIVER, 125 Bow Road (8.00) — Tue 12 (5.30) City Social. FLEETWOOD, Wilson Street, EC2 — Tue 19 (8.00) Darts Social. PEARLY KING, 94 Bromley High Street, Bromley-by-Bow, E3 — Wed 20 (8.00) Committee Meeting. PRINCE GEORGE, Wilton Way, E8 — Sat 23 Harwich Crawl. 9.30 train from Liverpool Street Station — Tue 26 (8.00) Darts match at home against Croydon & Sutton Branch. Venue to be arranged: phone Branch Contact.

KINGSTON & LEATHERHEAD: Sun 3 (12.00) Social. MALDEN MANOR, Malden Manor — Mon 4 (8.30) Committee Meeting/Social. MASONS ARMS, Thames Ditton — Thur 7 (8.30) Branch Meeting. ALBERT ARMS (Albert Bar), Kingston Hill, Kingston — Thur 14 (8.30) Joint Social with West London Branch. BUCKINGHAM ARMS, Petty France, SW1 — Thur 28 (8.00 onwards) Inn Rally of Surbiton. Meet at RAILWAY TAVERN.

NORTH LONDON: Tue 5 (8.00) Two Pub Social. BLACK ROSE (formerly Hamptons), 358 Archway Road, N6 then VICTORIA, 28 North Hill, N6 — Tue 12 (8.00) Two Pub Social. GEORGE & VULTURE, 63 Pitfield Street, N1 then PRINCE ARTHUR, 49 Brunswick Place, N1 — Tue 19 (8.00) Two Pub Social. ROSETTI, 23 Queens Grove, NW8 then PRINCESS ROYAL, 11 Circus Road, NW8 — Tue 26 (8.00) Two Pub Social. SKINNERS ARMS, 114 Judd Street, WC1 then LAMB, 94 Lambs Conduit Stret, WC1 — Every Sunday in November (12.00) Social. DUKE OF CAMBRIDGE, 64 Lawford Road NW5.

RICHMOND & HOUNSLOW: Thur 7 (8.30) Committee Meeting. TULIP TREE, 15 Kew Foot Road, Richmond — Mon 25 (8.30) Branch Meeting. WHITE HART, 70 High Street, Hampton.

SOUTH WEST LONDON: Thur 7 (8.30) Branch Meeting. PRINCE OF WALES, 270 Cavendish Road, SW12 (Meet for news of Good Beer Guides) — Fri 22 Crawl up the Junction Part II. Meet at WINDSOR CASTLE, 36 St. John's Hill, SW4 (8.00) then to FALCON by the traffic lights (8.30).

WEST LONDON: Wed 6 (8.00) Social. RADNOR ARMS, Warwick Road, W14, then WARWICK ARMS (9.00), then BRITANNIA TAP (10.00) — Thur 14 (8.30) Joint Social with Kingston & Leatherhead Branch. BUCKINGHAM ARMS, Petty France, SW1 — Thur 21 (8.30) Branch Meeting BARLEY MOW, 104 Horseferry Road, SW1.

The definite final date for Branch Diary entries for the December/January edition is 1st November. Please be sure to send all diary information to Andy Pirson.

LONDON DRINKER is published by the London Branches of CAMRA, the Campaign for Real Ale Limited.

Editors: Martin Smith, 64 Brailsford Road, SW2, Chris Cobbold. Tel: 674 0556.

Andy Pirson, 22 Fulwell Road, Teddington, Middx, TW11 0RA.

ADVERTISING: Sue O'Brien, 46 Denham Way, Denham, Middx, UB9 5AX. Tel: 0895 833603.

SUBSCRIPTIONS: (£1.70 for 6 months) should be sent to: Stan Tomkins, 122 Manor Way, Uxbridge, Middlesex.

The views expressed in this publication are those of the individual contributor and are not necessarily the view of either the London Branches of CAMRA or the Campaign for Real Ale Limited.



The **1986 Good Beer Guide** is now on sale — for information see page 15. A total of 251 pubs in the London area are shown, of which 111 are new entries or re-instatements from previous issues which were not included last year. It is, of course impossible in a selective guide to include every pub worthy of entry, and we hope that licensees who do not appear this time will not get

LAGER WARS COME NEARER HOME

In August we reported on the Aussie lager wars being waged down under. Our own Allied Lyons (owners of Ind Coope &c) played a major role by selling their stake in Castlemaine (the real one, not the Romford version) to Alan Bond (Swan lager & airships) who was then able to satisfy his own desires for XXXX appeal.

Now Elders IXL, the Australian owners of Carlton who produce Fosters down under (the real one, not the Mortlake/Halifax version), and really would have liked Castlemaine for themselves, have said that they now want to take over our own Allied.

Their first suggestion of a takeover price for Allied shares of 250p would however have meant Elders spending something like four times the amount they are themselves worth and caused instant incredulity and hilarity in the City. Despite this diversion the jobbers stopped falling about for long enough to mark the shares up well above 290p and thus quite possibly outside even Elders reach on its own.

So who could they get to stump up a bit of support, preferably with hard cash backing? Well, in this country we have a company called Imperial Group, which owns Courage amongst other things. A few years ago they bought a hotel and restaurant chain in America (although their idea of a restaurant seems to be our idea of a Wimpy bar). A lot of money down the drain later, Imperial managed to get rid of the chain to a US company. That was in September and as a result they then announced that they had a fair

the impression that their pub is out of favour. That is rarely the case; we'd like to list them all!

This is the last edition of London Drinker that you will buy at the present price. It has been decided by the London Liaison Committee to increase the price to 20p (the same as an evening paper) commencing with the next issue, our bumper December/January issue. Although only the actual typesetting and printing of the magazine are carried out by professionals, and the Editorial team and other contributors only receive expenses actually incurred, cost of materials has risen to such an extent since our last rise, of 3p, 15 months ago, that the rise was inevitable. We still think — and hope — that you are getting good value for money; if you don't agree, we shall be glad to receive your comments, suggestions and — of course — articles.

EDITORIAL TEAM.

amount of cash available, the time to spend it, and an interest in joining Elders in having a go at Allied. In particular they would be interested in ending up owning the food side if the price is right.

Elders has also asked some US companies to think about joining it, which again would add much needed credibility to a bid.

What would be the effect if Allied were to be taken over? Well, whatever happens to the other bits it seems pretty certain at the moment that Elders would want to end up running the breweries. After all, for an acquisitive company a brewery is an 'ideal cash cow' to provide the money for more general takeover activity. The breweries and pubs would have to be made to pay, no doubt by putting up prices, bringing pub gimmickry and concentrating on pushing high priced lager type brands of one sort or another.

It will be some months yet before we know the outcome. But this could turn into the biggest brewery shake-up ever in this country — remember that not all Aussies are tube swilling sheep farmers with corks round their hats. Watch out down your local for the ones that can count as well!

Badger

FULLERS

By the time you read this Fullers prices will have been increased to keep up with all the others. As we write this (at the end of September) we have been informed that the prices are due to rise by three pence a pint in about two weeks' time.

How much has it gone up in your local? Write and let us know.



NEWS FROM FULLERS

Fullers Griffin trophy presented to house most popular on recent 'passport' votes – joint winners:–

Victoria Arms, Binfield,
Blacksmiths Arms, Rotherhithe St, Surrey Docks.

Answer to September's quiz:–

The Monument – Fullers city pub and commemoration
of the 1666 Fire of London.

1st correct answer Mr Pearson of Hounslow

More news next month

Margaret McClelland Public Relations Officer

FULLER SMITH & TURNER PLC

Griffin Brewery Chiswick London W4 2QB Tel: 994 3691

FULLERS

Brewer retires:

Veteran brewer John Rowley was completely taken aback when his colleagues revealed his retirement present — a special beer, brewed and bottled to mark the occasion.

Brewers from all over England had gathered to say goodbye to John after 40 years in the brewing industry, 25 of them with Youngs of Wandsworth.

Young's head brewer, Ken Don, recalled a career which began after wartime service in the Royal Navy, during which John was awarded a DSC. He began brewing with Greene King of Bury St Edmunds and later worked for Courage and Taylor Walker before moving to Youngs, where he was in charge of bottling before being appointed head brewer in 1972. Eight years later, he took over responsibility for the £5 million redevelopment of Young's brewery, which was completed last year.

John's brewing colleagues kept the special beer a close secret — even from the company directors — until the day of his retirement party in Wandsworth Town Hall. It was then unveiled by brewery chairman John Young and brewer Andrew McClure, who thought up the idea.

John and his wife Jill are now living at Aldermaston in Berkshire.



John Rowley (second right) with his retirement ale and a pair of braces, presented to him to replace the pair which became part of his regular attire during 25 years at Youngs. Also pictured are (left to right) brewer Andrew McClure, head brewer Ken Don and chairman John Young.

The Windsor Castle, 13 Greyhound Lane, Sutton opened on 16th August after a five-year closure. Formerly a Charrington house, it is now a Fuller tied house with extensive refurbishment including Laura Ashley-type decor; London Pride is on sale at 90p, ESB is also available.

Bargain Beers

Fish & Ring, 141A Whitehorse Road, Stepney, E1. Davenport's; Fullers London Pride; Thwaites; Young's Special, all at 80p all the time (GBG Pub).

The White Horse, White Horse Road E1 (Commercial Road end). Charrington's IPA at 78p, excellent at all times.

Forester, Allfarthing Lane SW18, has Courage Best at 84p.

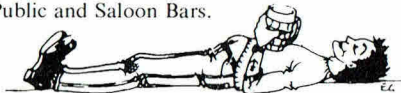
Princess Royal, Abbey Road, Merton SW19, Courage Best at 84p.

Flowers of the Forest, Blackfriars Road SE1, Courage Best 83p saloon bar (actually the Public).

Jolly Gardeners, Coburg St. NW1 (corner of Euston St), Combe Bitter 84p.

39er Off Licence, 39 Webbs Road SW11, Russian Stout 59p a bottle.

The Sun Hotel, Carshalton, sells Ind Coope Bitter at 78p and Burton Ale at 84p in both Public and Saloon Bars.



Rip-Offs

Nicholson's pubs — most beers over £1 a pint. (Punch Tavern, Fleet St EC4 seems to be an exception).

Spread Eagle, NW1: Young's Bitter 90p, Special 96p (on Sept 10th)

Crown & Anchor, High Barnet: Truman Bitter 90p, Best 98p.

Knights & Herald's Bar, Paddington Station: Arkell's BBB (o.g.1038) 98p.

The Roxborough, College Road, Harrow on the Hill — Ruddles County at £1.05 a pint.

The King's Head, High Street, Harrow on the Hill — Theakston's Old Peculier at £1.17 a pint.

Travellers Tavern, Eccleston Street, London SW1. Websters Yorkshire Bitter £1.02. Obviously cashing-in on its position opposite Victoria Coach Station.

The Cricketers, Kennington Oval, SE11. Websters Yorkshire/Combes Bitter £1.00. Ruddles County £1.20 despite price list stating that draught beers are £1.00. Pity to have to include this one as they have some good bands there.

The Hand & Spear, The Heath, Weybridge. Obviously determined to get another mention in this column — since its last appearance Friary Bitter has gone up to 94p and Burton is now £1.02.

CAMPBELLS FREE HOUSE

21 BRIDPORT PLACE, ISLINGTON, N1



**HOXTON HEAVY
SAM SMITHS
CHUDLEY
+ 1 Guest Beer**

Happy Hour
5.30 to 7.00

All hand drawn beers
at 70p per pint.

Buses 141, 271, 76
pass close by
5 mins walk from
Old Street and Essex Road
Stations

Lunchtime Pub Grub
Easy evening parking
Beer Garden

WATNEY'S Continuing the history of Watney Combe Reid & Co. Ltd.

Since at least 1636 brewing had taken place on the site of the Stag Brewery in Pimlico when the last brew was made on April 23rd, 1959.

The site was closed for re-development, retaining space for company offices, which were in use by April 1962.

1960 saw three amalgamations, with Phipps Northampton Brewery in March, Ushers Wiltshire Brewery in May, and Wilson & Walker Breweries Ltd in the Manchester area in August. In August 1961 Watney Mann (Norwich) Ltd was formed, using the premises of Morgan's Brewery purchased from Steward & Patterson and Bullard's the two other Norwich brewers.

At this time Red Barrel was a national keg beer, by far the best seller in the country, and was responsible for many cask beers going out of production. A number of competitors produced kegs — for example, Tartan, Double Diamond and Tankard. Consequently the Watney keg was pre-launched simply as "Red" in a blaze of publicity, using Mao and Castro lookalikes on posters as part of a "Red Revolution" advertising campaign, but the tide was turning — drinkers were no longer prepared to be standardized. CAMRA was formed the same year, and Watney's became its first "Public

Enemy No.1". The following year Watney's and Truman were swallowed by the giant Grand Metropolitan concern, which had also recently taken over Berni Inns, Mecca and Express Dairies. The advice offered to readers of the first Good Beer Guide in 1974 regarding Watney's was "Avoid like the plague", subsequently "Avoid at all costs". Red took the brunt of the backlash against kegs, gaining an unenviable reputation among drinkers, and its coupling with the standardized house colours of red and white did not help. In May 1979 it disappeared completely.

Watney's had taken the hint about changes in the beer market, and became the first major brewers to re-introduce cask conditioned beer, in the form of Fined Bitter. Brewed in Norwich to an o.g. of 1044 and tried in 6 London pubs in August 1975, it was more generally available from the early months of 1976.

The policy of decentralization began — local names began to reappear. At the same time, red and white seemed to be the only colours you would NOT see on a Watney's pub! Tamplin's Bitter, brewed in Norwich, appeared in 1978, and London Bitter in 1979. Truman's also re-introduced real ale for the first time in 6 years, in the form of Tap in 1977.

MARKET TAVERNS FREE HOUSES

OFFER

The Market Porter
9 Stoney St, SE1

The Pearly King
94 Bromley High St, E3

Fine Wines and Home Cooked Food
An Excellent Selection of Real Ales,

INCLUDING

At the Market Porter:

Market Bitter 1038

Market Special 1050

At The Pearly King

Bow Bitter 1038

7 BELLS Bitter 1050

Brewed At

The Market Brewery, 2 Park St. SE1

Now Re-Opened and Brewing Two Ales regularly of OG 1038 and 1050

Polypins available at the above address.

To order Tel. 407-2495



CAMRA members were the first to be informed, at a reception in the Mortlake Brewery, that the company would revert to its 1898 title of Watney Combe Reid — this it did from Monday October 4th 1982, when the Mortlake Brewery assumed the title Stag. That name was also used on the bitter brewed there which the same year had won the 21st Monde Selection in Belgium. At the time, the Managing Director, Tony Button, said “We have had our differences. Ten years ago we were moving in the opposite direction to CAMRA. But we now firmly believe we are heading in the same direction”. On the assumption that CAMRA is all for choice, I’d be inclined to agree. Up to four real ales are available in Watney houses in the London area:



Stag Bitter (o.g. 1042-48) and Combe's Bitter (og 1040-44) brewed at Mortlake; Ruddle's County (og 1048-52) and Webster's Yorkshire Bitter (og 1035-39) brewed respectively at Oakham and Halifax and brought to Mortlake in 120 barrel (3960 gallon) tankers for fining, racking, casking and despatch to point of sale.



This brings me to the origin of this article — a visit made by the Editorial team to Mortlake in March following an inaccurate report in that month's Drinker about the origin of Webster's. It resulted in an invitation, which we were happy to accept, to go and see for ourselves. The facts are as stated in the previous paragraph, and also

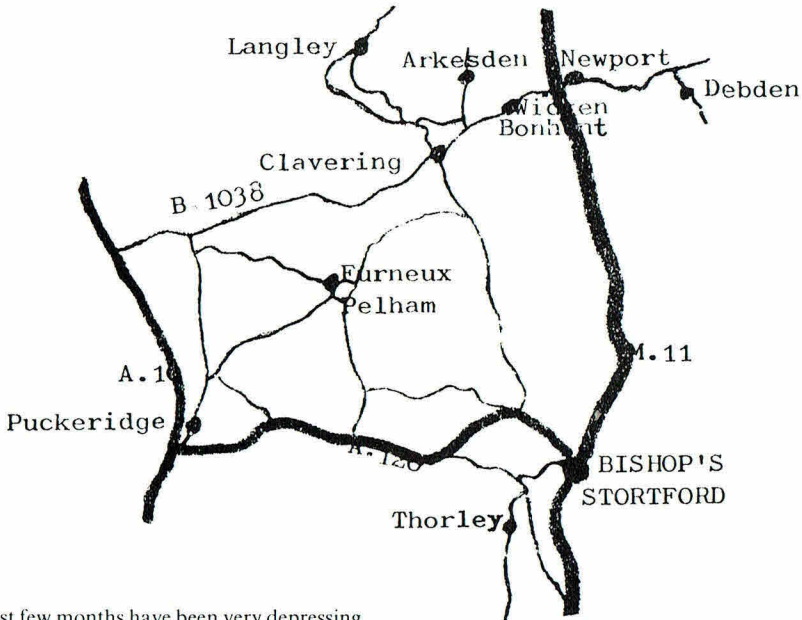
on p.10 of our May issue. Watney's are Webster's largest customers, and they also buy between 10 and 15% of Ruddle's output, amounting to 3 or 4 tankers a week. During the course of our evening visit we were shown a visual presentation outlining the brewery's history and the brewing process, as well as seeing the plant in action. It was stated that Watney's has a basically real ale drinking board with total control over their portfolio, committed to real ales which are completely authentic and intended to give value for money. An example cited was Combe's Bitter, with the same gravity as its pre-war counterpart and also the same as Fuller's London Pride. It's also my favourite of the range, and if you haven't tried it I'd recommend you to do so. On the subject of beers marketed in recent years and subsequently dropped, it seems Tamplin's (which is still on sale in Southern Phoenix Brewery houses) and Mann's IPA were not successful in London. Similarly Antler and Hammerton Porter were both unsuccessfully test-marketed in London. Antler was planned as a cheap traditional ale (one licensee refused to sell me a half as it was “too cheap”), and this will continue in keg form at below its gravity rate. Hammerton's was an attempt to find an alternative way to present real beer to London drinkers. The coming and going amongst traditional beers, including London Bitter which was sold from 1979 to 1984, has been part of an attempt to develop the best possible range for Watney Combe Reid.

Despite the fact that our visit took place on the day after the Budget and that everyone had been frantically busy with calculators, we were made most welcome, questions were answered in great detail, and the evening was rounded off lavishly in the Brewery's own visitors' bar. If only we had that from everyone we misreport. I'd like to place on record my thanks for information kindly provided by Watney's P.R.O. department at short notice to augment my own sources, chief among which was “The Red Barrel”, the history of Watney Mann by Hurford Janes, published in 1963. I hear a successor is due for publication next year, and look forward to reading it with great interest.

Naturally in the preparation of this offering I have had to omit a great deal of information which is irrelevant to the London scene — for example, that Usher's, Gale's and Burt's are available in Phoenix outlets, but I trust that the general picture is clear. It's been a long time since we fell out with Watney's, or to use their present full title, Watney Combe Reid & Co. Ltd. May it never happen again!

Martin Smith.

Rayments Revisited



The past few months have been very depressing. Takeovers have been rife and as Simpkins employees found to their cost, closures are often close at hand. Staff from all the breweries recently taken over or 'merged' must be reflecting on their futures.

With this as a backdrop, we felt we must remind ourselves there had been takeovers in the past where the brewery had been left to run as a semi-independent subsidiary with its reputation and goodwill intact. Rayments is such a company. No keen real ale drinker could hear the name of the village without salivating at the thought of a superb pint of Rayments BBA (Best Burton Ale).

Furneux Pelham is a sleepy village near Buntingford. The history of brewing in the village began at the Hall, a sixteenth century manor house which was purchased in 1677 by Felix Calvert. His grandson, also Felix, inherited Furneux Pelham Hall. It appears that the history of brewing in the village during the 17th and 18th centuries followed the typical pattern — beer being brewed in large country houses for consumption on the estate and within the village only.

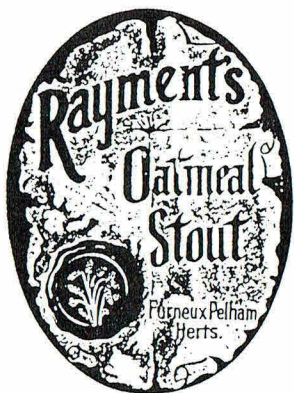
In the 1840's, William Rayment leased Furneux Pelham Hall from the Calvert family and was known to have brewed as well as farmed. In 1860 when the lease expired he acquired a site beside the crossroads at Barleycroft End. Rayment was listed in the county directory of the 1860's as a

brewer, malster, miller, farmer, brickmaker and drainpipe maker! Indeed, the bricks used to build the brewery were baked in the local kiln.

Despite his death not long after the brewery was completed, the business was carried on by his executors. There was brewing on 3 or 4 days a week, about 150 gallons at a time. The maltings were added in 1869 and by 1878 Rayment and Company was registered.

It was not until 1888 that the executors of William Rayment put the brewery up for auction. The purchasers were Frederick William King and Edward William Lake who at the time were directors of Greene King and Sons. They wanted Rayments for a private partnership and as a family business. In 1928 the brewery was sold to Greene King and has been a wholly owned subsidiary ever since.

It was fortuitous that the Lakes remained in charge of Rayments as local directors. They were keen to build up the trade, broadening the estate through Herts and Essex. 1966 could have been the year when the tide turned. The last member of the Lake family retired leaving the brewery vulnerable. During the next few shaky years Rayments range of bottled, keg and cask conditioned beers were whittled down to a draught mild, a bitter and a bottled beer, Pelham Pale Ale. A number of their houses became Green King pubs.



Luckily, Rayments reputation and its product had earned it many friends and the consumer action spearheaded by Camra was successful. Today, BBA must rank as one of the most popular ales in the South of England.

We found it hard to leave the brewery. There have obviously been changes since it was built, they no longer generate electricity for the village from their producer-gas plant and engine! But, like the village itself, it seems timeless. Of particular interest was the ground floor based steels-masher and mash tun. These wonderful pieces of plant were installed in the brewery in 1920 and 1870 respectively.

We left Furneux Pelham and headed towards Clavering. That was the simple part. The WAGON AND HORSES has a postal address in Clavering but actually lies in a picturesque spot on the road to Upper Langley about 1½ miles outside Clavering. Well worth seeking out. It is the only pub of the Rayments tied estate serving BBA on top pressure. However, it was in superb condition but did turn out to be our most expensive pint at 80p.

The one bar pub is warm and friendly with a delightful wood panelled bar and inglenook fireplace with its original brick surround. This pub stands as something of a rarity these days.



The "Axe & Compasses" Arkesden

The AXE AND COMPASSES in Arkesden is a partly thatched pub opposite the village post office (which is only open 3 mornings a week!). In the public an excellent pint of BBA is 78p. We drank in comfortable surroundings; wooden floor, wood panelled walls decorated with old tools donated by various customers and past owners. The lounge has to be seen to be believed. The settees, armchairs and uprights are all upholstered in a hunting scene material giving the room a look of a rather old fashioned but very grand front parlour. The blackened beams are laden with horse brasses. Again, there is a magnificent inglenook fireplace. The pub places quite a heavy emphasis on food but has the sense to have a separate restaurant.

Our next port of call was the COACH AND HORSES, Wicken Bonhunt. Outside is the most attractive cut-out sign. Inside there is a public, snug and separate restaurant (originally the lounge). The snug was a welcoming, comfortable bar, very popular with locals and tends to get very crowded in the evenings. The public was once an Off Licence and has the original red tiled floor. The beer was excellent and was 77p a pint.

The WHITE HORSE, Newport was a disappointment compared with the other pubs. The public with two fruit machines and awkwardly placed dart board left little room for supping. The lounge was a bit better, but the walls with their cheap cigarette posters intermingled with cartoons and old pictures, were a bit off-putting. Still, the beer was in good 'nick' and was 78p a pint.

Our lunch time session came to a close. Had we spent less time chatting to friendly landlords and locals we would have made the last pub on our planned route, THE PLOUGH at Debden . . . We take our investigating very seriously, so, despite tremendous hardship, we stayed in Rayments country to drink at this last pub. Also, having a little extra time we decided on a round trip home to report on the first new pub Rayments have opened in the past eight years. . . Read on.



The plough (Debden)

Continued on p.11

REAL BEER IN LONDON UPDATE 23.

Updates to CAMRA'S comprehensive guides to Greater London's real ale pubs are published monthly in *London Drinker*. The *Real Beer in London* guide, published in Dec. 1981 and now out of print, covered 2300 real ale pubs across the whole of Greater London. Its accompanying *Real Beer in London Supplement* booklet, published in May 1983 and still available, listed a further 1300 real ale pubs and completely updated the guide.

The London-wide guides are gradually being replaced by a series of guides covering sectors of London and listing all pubs, real or fizz. A guide covering the City and East London postal districts was published in Sept 1983 and is also out of print. The *North London Beer Guide* covering WC1, the N and NW postal districts, Outer North and most of Outer N. West London was published in August 1984. *Real Ale in South East London* covering the SE postal districts and Outer S. East London was published in August 1985. Both of these guides are still available. A guide covering S. West London is under preparation.

This month we include a separate pull-out *Amendments List* to the *North London Beer Guide* in the centre pages.

The Updates include confirmed information on additions, deletions and changes to real ale pubs in Greater London. The information is not only of general interest but also enables CAMRA in London to monitor progress by the brewers in installing real ale.

If you know of any outlet for real ale not listed in CAMRA's guides or updates, or outlets where changes have taken place, or if you would like to help with surveying the sector guides under preparation, please write to:—**RBIL Update, 2 Sandtoft Road, London SE7 7LR.**

ADDITIONS

CENTRAL

EC2 FLEETWOOD, 36 Wilson St. Fuller: Chiswick Bitter, London Pride, ESB. A new Fullers tied house under an office block. Closes 10pm Monday-Friday. Closed Sat. evening and all day Sunday.

EAST

BARKING FLY HOUSE, 201 Longbridge Rd. Ind Coope: Bitter, Burton Ale.

BARKING HARROW, Ripple Rd. Charrington: IPA.

BARKING SHORT BLUE, 207 Bastable Ave. Webster: Yorkshire Bitter.

BARKING WESTBURY ARMS, 174 Ripple Rd. Webster: Yorkshire Bitter.

BARKINGSIDE NEW FAIRLOP OAK, Fencepiece Rd. Truman: Best Bitter. A Berni Inn.

CHADWELL HEATH CHADS, High Rd. Watney: Combes Bitter, Webster: Yorkshire Bitter formerly **CHADWELL ARMS**.

CLAYHALL UNICORN, 225 Clayhall Ave. Wethered: Bitter.

COLLIER ROW DOUBLE TOP, White Hart Lane. Ind Coope: Bitter, Burton Ale formerly **WHITE HART**.

DAGENHAM ANGLERS RETREAT, New Rd. Charrington: IPA.

DAGENHAM BEACON, Oxlow Lane. Ind Coope: Bitter (re-instatement).

DAGENHAM ROUNDHOUSE, Lodge Ave. Watney: Combes Bitter, Webster: Yorkshire Bitter.

HAROLD HILL BEAR, Noak Hill Rd., Noak Hill. Charrington: IPA.

ILFORD ANGEL, Station Rd. Charrington: IPA. New pub replacing one of same name lost to redevelopment on High St.

NEWBURY PARK AVENUE, Eastern Ave. Courage: Best Bitter, Directors.

RAINHAM SAXON HORN, 350 Upminster Rd. North. Charrington: IPA.

ROMFORD RUSH GREEN, Rush Green Rd. Watney: Combes Bitter, Webster: Yorkshire Bitter.

SEVEN KINGS ASHGROVE, 271 Green Lane. Charrington: IPA.

NORTH

N1 CHARLES I, 57 Northdown St. Webster: Yorkshire Bitter.

N1 DUKE OF WELLINGTON, 71 Nile St. Courage: Best Bitter.

N1 DUKE OF WELLINGTON, 74 Richmond Ave. Courage: Best Bitter, Directors (re-instatement).

N1 NAGS HEAD, 12 Upper St. Watney: Combes Bitter, Stag Bitter, Webster: Yorkshire Bitter.

N1 OLD PARS HEAD, 66 Cross St. Courage: Best Bitter, Directors.

N1 WEAVERS ARMS, 98 Newington Green Rd. Watney: Combes Bitter, Webster: Yorkshire Bitter.

N7 POCKOCK ARMS, 468 Caledonian Rd. Courage: Directors.

N7 SUSSEX ARMS, 119 Tollington Way. Courage: Best Bitter, Directors.

N7 VICTORIA, 203 Holloway Rd. Courage: Best Bitter, Directors.

N16 ROYAL OAK, 79 Green Lanes. Courage: Best Bitter.

N19 ST JOHNS TAVERN, 91 Junction Rd. Watney: Combes Bitter, Webster: Yorkshire Bitter.

NORTH WEST

NW1 COLLEGE ARMS, 1 Royal College St. Courage: Best Bitter, Directors.

NW5 MALDEN ARMS, 117 Malden Rd. Courage: Best Bitter.

NW8 RICHMOND ARMS, 1 Orchardson St. Watney: Combes Bitter, Webster: Yorkshire Bitter.

NW10 PLUMES, Abbey Rd. Flowers: Original Bitter, Greene King: Abbot Ale.

SOUTH EAST

SE1 OLD KENT ROAD GIN PALACE, 205 Old Kent Rd. Truman: Bitter, Best Bitter, Sampson. Webster: Yorkshire Bitter. Formerly the **CASTLE** lavishly refurbished, open until 12 midnight. (re-instatement).

SE5 WINDMILL, 98 Wyndham Rd. Webster: Yorkshire Bitter.

SOUTH WEST

SW6 CLEM ATLEE, 1 St Thomas's Way. Taylor Walker: Bitter. (re-instatement).

SW6 NORFOLK ARMS, 272 North End Rd. Watney: Combes Bitter (re-instatement).

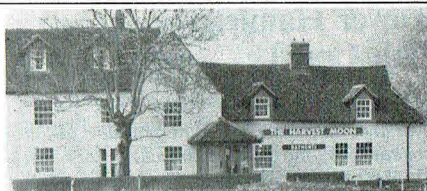
SW6 WILTON ARMS, 205 Dawes Rd. Webster: Yorkshire Bitter.

Continued on p.21

Rayments continued

For anyone following our route, THE PLOUGH is recommended. I must disappoint anyone going to view the beer engines — they've gone. This pub was taken over nine months ago, and the new landlord is keen to promote his draught beers (BBA plus Greene King Abbot). It was here we had our cheapest pint of the day at 75p. The public is a down to earth bar with red tiled floor. The dart board is well placed and the one fruit machine was silent and 'non-flashing' when not in use. The lounge is a small compact bar with a handsome fireplace and low, beamed ceiling. The walls were covered with interesting pictures in keeping with the pubs decor and age. It is a sad fact of life that here too catering has impinged on drinking space. The lounge is mainly used as a restaurant. However, if the landlord gets his way, an extension will be built in the near future which will keep the food separate and the pub for what it was built — drinking!

To the new pub, THE HARVEST MOON, at Thorley. Actually, to our cost we found it in Thorley Park which is difficult to find but worth the effort. The Harvest Moon was originally known as Piggotts Farmhouse. The existing structure is at least 300 years old. It is a grade 2 listed building of charm and character with



The Harvest Moon

many local historical connections. The tendency to be over-ornate has been avoided in the restructure work. By a clever use of light wood furniture, the original dark oak beams have been highlighted. The beams and the magnificent old fireplace divide the open-planned pub into sections. There is an eating area but it has been kept separate and well away from the bar. The beer was in excellent condition and was 79p a pint.

The day drew to a close and we headed off back to London. We were surprised how quick the return journey seemed to be. Rayments country, for us in the west of London, has always seemed such a distance to go for a drink. But, with Watson driving, me drinking and the opening of the M.25, it is coming closer and closer. This grand old brewery and its BBA deserve our patronage.

Holmes and Watson.

THE BRIXTON BREWERY

in the Warrior,

242 Coldharbour Lane,
Loughborough Junction,
SW9



BRIXTON BITTER

O.G.1036 at 79p per pint.

BRIXTON BEST

O.G.1040 at 84p per pint.

WARRIOR

O.G.1050 at 94p per pint.

POLYPINS AVAILABLE from £20.75

Tower Hamlets Pub Crawl . . . Bow

This article describes the route of a pub crawl to be conducted by the East London and City Branch of CAMRA on 9th November, commencing at 8pm.



Coming out of Bow Road Station, cross the road and turn right toward the bridge. Here was the old BR Bow Road Station (closed 1947) and alongside is the Little Driver. Apart from the Bass and IPA the attraction is the mirror alongside the dartboard. Hoare & Co's Red Lion Brewery was at 29 St Katherine's Way E1 in the shadow of Tower Bridge and was taken over by Charrington in 1933 and demolished.

Crossing the road and going down Campbell Road we come to the Widow's Son or Bun House. It used to be a cottage and its occupant a widow who had a devoted son. Much to her sorrow her son became a sailor and when the day came to set sail the son tried to console his mother by telling her he would be back by Easter to share a hot-cross bun with her. He never returned. Every year till her death his mother baked hot-cross buns in the hope he would come back. The tradition continues and every Easter a sailor adds a fresh bun to the old buns suspended from the ceiling. The real beers here are Burton, Taylor Walker.

Turning right and continuing down Devons Road and under the railway bridge through the new paved shopping area till you come to the Rose & Crown. Many 'Rose & Crown's' sprung up through the marriage in 1486 of Henry VII to the daughter of Edward IV, Elizabeth of York. This was a year after the battle of Bosworth when Henry (Lancashire, red rose) beat Richard III (Yorkshire, white rose). The Rose & Crown also sells Taylor Walker.

Turning left outside the pub and crossing Bow Road, take a look at the statue of Gladstone (1882) which stands in front of St Marys (Bow Church). Deductions were made from the wages of the matchgirls from the nearby Bryant and

May factory towards its cost. Nearly opposite is the Three Tuns.

The Three Tuns has recently taken over their neighbours to make the pub twice as large. This means the pub now has a dartboard as well as a halfpenny board (?). Thomas Wethered's Bitter is the beer to be had from Whitbread's Brewery.

Retrace your steps past Gladstone and towards the Rose & Crown. At 148 Bow Road on the corner stood, until 1982 the Black Swan. It had been rebuilt in 1920 after being bombed by German Air Force. On 23rd August 1916 a Zeppelin bombed the pub killing four people.

The Moulders Arms is in Bromley High Street. It looks out of place amongst the high rise flats. Pictures of film stars adorn the walls and the beers from Watney are Combes Bitter and Stag. As well as Ruddles County.

Continuing along the road we find the Pearly King, which until 1982 was the Seven Stars. Having been purchased from Ind Coope much money has been spent redecorating to make it into a very popular pub selling Youngers IPA, Greene King IPA, Rayments BBA and Beaches Bitter, a malt extract beer brewed at the Market Porter in SE1.

The original tavern was built about 1606 and in the Bromley Churchwardens accounts of 1734 appears a bill for a dinner in the Seven Stars for £3.0.6d.

Retracing our steps past the Pearly King and using the subway under the motorway make your way to Three Mills Lane and take a look at the former distillery and clock house. The privilege of erecting mills on this site was granted to the monks of West Ham Abbey in 1135. As a distillery it was founded by members of the Hugenot family of Lefebre in 1729. It was made a Conservation Area in November 1971 and made a Grade I building on the National List of Buildings of Architectural or Historical Interest. The House Mill was built in 1776 by Daniel Bisson. The Clock Mill dates from 1817.

Heading towards Bow flyover and rejoining Bow Road we come across the Bombay Grab. This was the brewery tap of the Smith Garrett Brewery which stood behind the pub until August 1933 when, after being taken over by Taylor Walker in July 1922 it was demolished. It was from here that the first cargo of beer was sent to India in 1734. Hence IPA = Indian Pale Ale. The site is now occupied by Prioress House and detailed plans of the brewery site can be seen in Bancroft Road Central Library. Hopefully there is some real ale in the form of Burton or Taylor Walker. The pub has had an on-off love

Tower Hamlets continued

affair with real ale over the years and it currently has a new licensee.

On the other side of the flyover once stood the Cygnet Brewery (251 Bow Road). Little is known of the brewery except that it was dissolved in 1914. Also, and possibly on the same site, was the Falcon Brewery in Payne Road. It acquired the Old Ford Brewery at the turn of the century but voluntarily liquidated in

1903. If anyone has any information on these breweries please let us know.

STRONG WORD

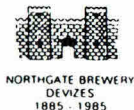
The Advertising Standards Authority has warned brewers against making claims over the strength of their beers. The message came in a report issued after an advertising campaign for Stella Artois lager, which claimed it to be the strongest lager in the country. German Lager Importers objected to this, citing their own brand, Kronen Classic, as having an OG one to two points higher than Stella. The report suggested that there should be a definitive list of beer strengths drawn up.

WADSWORTH'S CENTENARY

This year sees the hundredth anniversary of Wadsworth's (newer) Northgate brewery. London drinkers will be familiar with the names of their more famous brews, 6x and Old Timer; IPA and the recently introduced Farmer's Glory bring the total of Real Ales produced by Wadsworths to four. However, the history of Wadsworths is less well known, despite containing much of interest.

Henry Alfred Wadsworth first bought the Northgate brewery in Devizes in 1875, when he was 22 years old. He had already six years' brewing experience and a trip to Australia behind him. He soon achieved local fame by becoming the first man to cycle from London to Bath — he only took 2½ days on an iron-tired bicycle!

By 1885, the site had been outgrown, and a new Northgate brewery was built close to the original, to Henry Wadsworth's own design. Wadsworth's partner in business was his brother-in-law John Smith Bartholomew: on his death in 1923, his son John Bartholomew succeeded as Managing Director. In the days before motorised transport, people could not travel to purchase beer; consequently Wadsworths used to deliver it. At one time they had 3,000 private customers and six 'outriders', or representatives, collecting orders.



WADSWORTH

Traditionally Brewed Beers

Henry Wadsworth died in 1929 after falling from a horse. He was well into his seventies by then. The brewery continued to expand under John

Bartholomew, taking over Godwins of Swindon between the wars. Trade was much assisted during the second World War by the huge influx of American soldiers around Devizes. Demand exceeded supply for a while, despite the absence of many local customers who were away fighting the war.

When John Bartholomew died in 1952, to be succeeded by his son, the present chairman, John C. Bartholomew, the latest phase of expansion began. Besides buying many licensed houses since then, the Company has encouraged sales in Free Houses and Clubs. Deliveries are now made much further afield, thanks partly to the motorway system, including outlets as far afield as London, South Wales, South Hampshire, down to Plymouth and up to Stratford-on-Avon. As a minder of the past however, deliveries within a 2½ mile radius of the brewery are still made by horse-drawn dray.

And the reason for Wadsworth's success? Traditional brewery, using traditional ingredients, methods and recipes — in short, they brew good beer.

Real bover

History was re-enacted at the Swan Inn, near Bridgnorth, Shropshire, this summer, when hordes of drunken Morris dancers ran amok before doing battle with the local militia.

Surprisingly, we have to go back to 1650 to find the fore runner of this event, when Morris men, after an all-day drinking session, refused to pay (well at least that is one tradition which lives on) and then proceeded to smash up the pub before tangling with the boys in blue.

Nice to know the thugs at Millwall are only carrying on an ancient tradition after all.

* Youngs, the Wandsworth brewers, have been helping the City of Westminster to celebrate its 400th anniversary.

Two of Young's famous Shire horses pulled a 226lb bell — a gift from the people of Switzerland — through the city in an age-old Swiss custom. The bell is part of a £400,000 glockenspiel which is to be erected at the Swiss Centre in Leicester Square.

The horses took the bell, on board a Victorian dray decorated with flowers, to the Roman Catholic Westminster Cathedral, Methodist Central Hall and finally to Westminster Abbey. It was blessed at each stop and has now been put into safe keeping until it goes into the glockenspiel, along with 24 other bells, ready for an official opening in November.

Street's behind

The other vital question, of course, is when is TV's most famous pub going to go real? Back came the instant reply from Granada: "We have no intention of changing the Rover's Return". Shame, I've always thought Bet Lynch would look better behind a good pair of handpumps.



The Swiss bell, on board the Young's dray, being blessed at Westminster Abbey by the Dean of Westminster, the Very Rev Dr Edward Carpenter.

PINT POT *FREE HOUSE*

54 PENTONVILLE RD. N.1
(200 YDS. FROM ANGEL TUBE STATION)

**CLASSIC VICTORIAN PUB WITH 10 HAND PUMPS
OFFERING WIDE RANGE OF BEERS**

FROM: Arkells, Greene King, Marstons, Everards,
Brakspears Chudley, Charles Wells, King & Barnes,
Brains, Shepherd & Neame, Bass Fullers.

BEER OF THE MONTH 75p per pint
BODDINGTONS

BOOK REVIEW

The Good Beer Guide for 1986, due to be launched on 28th October is of the same format as last year, with information and articles as well as over 5,000 entries of recommended pubs in the United Kingdom, the Republic of Eire, the Channel Islands and the Isle of Man. Of particular interest is one item (page 55) on the selection of entries, which is by its very nature very subjective. This is always a bone of contention with pubs that have been omitted or were never included, and the fact that one pub has appeared in the last edition is no guarantee that it will continue to do so notwithstanding the circumstances. Pubs are selected on the consistent excellence of their beers, and other considerations, while important, are still secondary. In many branches it is the policy to "drop" a pub which changes management for a year to allow the incoming licensee to prove his/her worth. And in any circumstances the omission of a pub implies no aspersions; some branches like to vary their entries each year to give everyone a fair chance. Each pub recommended has been visited personally on a number of occasions and its inclusion decided either by the Branch involved, or by an ad-hoc committee, so you can take it that when travelling in unfamiliar parts, it is worth following the Guide. No pub can buy itself into, or out of, a Guide, which ensures its impartiality. Cover price is £4.95, with a special price of £3.50 for members, obtainable via Branches — see list of contacts below.



APPLICATION FOR CAMRA MEMBERSHIP

I/We wish to join the Campaign for Real Ale Limited.
I/We agree to abide by the Memorandum and Articles of Association of the Campaign.

NAME(S)

FULL POSTAL

ADDRESS

POST CODE

I/We enclose my/our remittance for:

Full/Husband & Wife membership for one year £7.00*

or

Full/H & W overseas membership for one year £10.00*

*Delete as appropriate

Signature Date

Please send your remittance (payable to CAMRA Ltd) with this completed Application Form to:

Sally Bennell
CAMRA Ltd
34 Alma Road
St. Albans
Herts. AL1 3BW

Thank you for joining and welcome to CAMRA. Please keep in touch (details are contained in the Member's Handbook, which will be sent to you on acceptance of your application and also on the "Branch Diary" page in 'WHAT'S BREWING').

BRANCH CONTACTS

BEXLEY	DES WARD	Erith 45716 (H)	Orpington 38321 x29 (W-Fri only)
BROMLEY	JOHN WATERS	851 5111 (H)	
CROYDON & SUTTON	PAUL EVERITT	Lodge Hill (66) 46550(H)	
E.LONDON & CITY	ADRIAN HALL	471 5361 (H)	405 7686 x501 (W)
ENFIELD & BARNET	TONY MORGAN	440 2186 (H)	283 1000 x 2944(W)
KINGSTON &	JOHN NORMAN	546 3476 (H)	Weybridge 47282 x 2380 (W)
LEATHERHEAD			
NORTH LONDON	ANNE LODGE	888 5300 (H)	
RICHMOND			
& HOUNSLOW	ANDY PIRSON	977 1633 (H)	
SOUTH-WEST ESSEX	ANDREW CLIFTON	Romford (0708) 65150 (H)	
SOUTH-EAST LONDON	DAVE FOORD	690 5104 (H)	
SOUTH-WEST LONDON	CHRIS COBBOLD	674 0556	
WEST LONDON	RODNEY HOLLOWES	723 2798 (H)	
WEST MIDDLESEX	KEITH WILDEY	423 1243 (H)	



SJ CRUICKSHANK

THE WHITE HORSE ON PARSONS GREEN

LONDON SW6 TELEPHONE - (01)736-2115

**SATURDAY 30th NOVEMBER —
11.00 — 3.30 & 5.30 — 11.00 p.m.**

Old Ale Festival

FEATURING TRAQUAIR HOUSE ALE

JAZZ

FOOD

English Cooked
Breakfast from
11.00 a.m.

MORRIS DANCING

And Strong and Old Ales from:

ADNAMS

BRAKSPEAR

FULLER

GALE

GIBBS MEW

GODSON CHUDLEY

HOOK NORTON

KING & BARNES

LEES

MARSTON

MORRELL

RINGWOOD

ROBINSON

THEAKSTON

TIMOTHY TAYLOR

WADSWORTH

NORTH LONDON BEER GUIDE

Supplement no 1.



Campbell's Free House

Photo: John Elliott

WC1 BLOOMSBURY

- 14 **CALTHORPE ARMS**. Now a Youngs tied house, -Wethered: Bitter, +Young: Bitter Winter Warmer.
14 **CORA HOTEL**. No real ale, H removed.
20 **PILLAR BOX**. Renamed **THUNDERER**.
22 **RUSSELLS**. Renamed **BLITZ**, +Webster: Yorkshire Bitter.
22 **SKINNERS ARMS**. Now a Greene King tied house, -beers listed, +Green King: IPA, Abbot Ale.
24 **YORKSHIRE GREY**. Now a Clifton Inns brew pub. +Headline Bitter (OG1037), Holborn Best Bitter (OG1047).

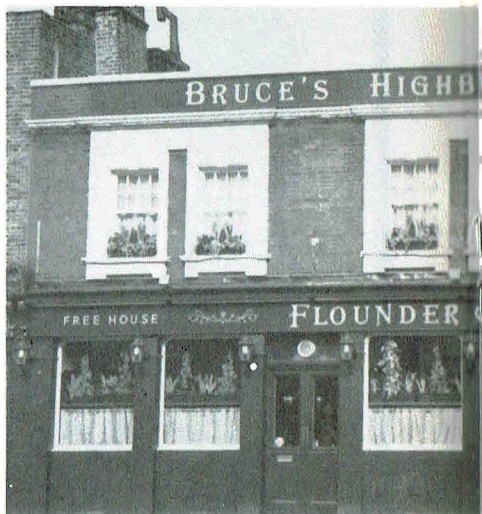
N1 ISLINGTON

- 27 **BELVEDERE**. No real ale, H unused.



Photo: John Elliott

- 31 **GEORGE IV**, 60 Copenhagen St. Thwaites: Best Mild, Bitter (confirmation).
34 **MACBETH**. No real ale, H unused.
37 **MITRE TAVERN**. Wells: Eagle Bitter, Bombardier (confirmation).
41 **ADELAIDE**. Renamed **SCULLYS**, H unused (confirmation).
41 **BEEHIVE**. Watney: Combes Bitter.
41 **CHARLES I**. Webster: Yorkshire Bitter.
41 **DUCHESS OF KENT**. Watney: Combes Bitter, Webster: Yorkshire Bitter.
41 **DUKE OF CAMBRIDGE**. Courage: Best Bitter.
41 **DUKE OF WELLINGTON**, 119 Balls Pond Rd. Webster: Yorkshire Bitter.
41 **DUKE OF WELLINGTON**, 71 Nile St. Courage: Best Bitter.
41 **FOX TAVERN** renamed **SLUG & LETTUCE**, Watney: Combes Bitter, Webster: Yorkshire Bitter.
41 **GEORGE IV**, 57 Liverpool Rd. Should read **GEORGE**.
41 **HALF MOON**. H unused (confirmation).
41 **HOPE & ANCHOR**. Under renovation by Richard Branson's Virgin group, real ale anticipated.
41 **WATERSIDE INN**. Now owned by T. Hoskins of Leicester — beers listed except Fuller: London Pride, +T. Hoskins: Bitter (OG1039), Penns Ale (OG1045); Marston: Pedigree. Beers may vary. Expensive.
42 **KINGS HEAD**. Wethered: Bitter.
(42) **LORD RAGLAN**, 139 Southgate Rd. Whitbread. No real ale (omitted in error).
(42) **MARKET BAR**, 13 Liverpool Rd. Truman, formerly **AGRICULTURAL**. No real ale, (omitted in error).
42 **MARKET TAVERN**. Courage: Best Bitter, Directors.
42 **MARQUIS OF SALISBURY**, 64 Freeling Rd. Watney. No real ale (omitted in error).
42 **NAGS HEAD**. Watney: Combes Bitter, Stag Bitter, Webster: Yorkshire Bitter.
42 **OLD PARRS HEAD**. Courage: Best Bitter, Directors.
42 **OLD QUEENS HEAD**. Watney: Combes Bitter, Webster: Yorkshire Bitter.



- (42) **PACKINGTON ARMS**, 125 Packington St. Whitbread. No real ale, (omitted in error).
42 **PLUMS**. Renamed **FALLEN ANGEL**. Greene King: IPA, Abbot Ale, Pitfield: Bitter.
42 **PRINCE ALFRED**. H unused (confirmation).
42 **RAILWAY TAVERN**. H unused (confirmation).
42 **RANDALLS**. H unused (confirmation).
42 **ROSEMARY BRANCH**. Now a Free House, Bass, Charrington: IPA, Everard: Old Original, Fuller: London Pride, Samuel Smith: Old Brewery Bitter, Young: Special Bitter. Beers may vary.
42 **SALMON & COMPASSES**. Courage: Best Bitter, Directors.
42 **THREE BREWERS**. Now a Free House, no real ale.
(42) **THREE JOHNS**, 73 White Lion St. Watney. No real ale, (omitted in error).
42 **WEAVERS ARMS**. Watney: Combes Bitter, Webster: Yorkshire Bitter.

N2 FINCHLEY

- 44 **MANOR COTTAGE**. No real ale, H removed.

N4 FINSBURY PARK

- 47 **EARL OF ESSEX**. No real ale. H unused.
47 **MANOR HOUSE**. No real ale. H removed.
48 **ST JAMES TAVERN**. Closed.
50 **HAPPY MAN**. Renamed **BECHERS**.
50 **RAILWAY**. Brakspear: Bitter, Wethered: Bitter.

N5 HIGHBURY

- 52 **DRAYTON PARK HOTEL**. Courage Best Bitter, Directors.

N6 HIGHGATE

- 56 **HAMPTONS**. Renamed **BLACK ROSE**

N7 HOLLOWAY

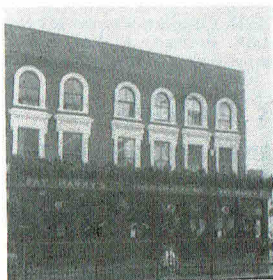
- 59 **GANGSTERS WINE BAR**. Closed.
60 **RAILWAY TAVERN**. Renamed **RAILWAY**, confirmed as Fullers tied house; Fullers: London Pride, ESB.
60 **ADAM & EVE**. Is Watney (not Whitbread).
60 **ALBION**, 412 Liverpool Rd. Is Whitbread (not Watney).

AMENDMENTS LIST No.1 September, 1985.



Photo: John Elliot
The Flounder & Firkin N7

- 61 BUTCHERS ARMS. Courage: Best Bitter, Directors.
- 61 CALEDONIAN ARMS. Now a Free House; Truman: Best Bitter, Younger: IPA. Beers may vary.
- 61 CITY OF LONDON. Charrington: IPA.
- 61 CITY OF ROME. Watney: Stag Bitter, Webster: Yorkshire Bitter.



- 61 EARL RUSSELL. Renamed FAT HARRY's, now a Free House; Marston: Pedigree, Tolly Cobbold: Bitter, Original, Truman: Sampson. Beers may vary.
- 61 FAVOURITE. Now a Free House; Bass, Charrington: IPA, Greene King: Abbot Ale, Young: Special Bitter, beers may vary.
- 61 Highbury Brewery Tap. Renamed FLOUNDER & FIRKIN, now a Bruce's Free House. Varying guest beers. Bruce's house beers kept under blanket of CO₂.
- 61 NEWMARKET INN. Flowers: Original Bitter, Wethered Bitter.
- 61 POCOCK ARMS. Courage: Directors.
- 61 PRINCE ARTHUR. H unused (confirmation).
- 61 SUSSEX ARMS. Courage: Best Bitter, Directors (note correct name).
- 61 TWO BREWERS. Websters: Yorkshire Bitter.
- 61 VICTORIA. Courage: Best Bitter, Directors.

N8 HORNSEY

- 63 RAILWAY HOTEL. Renamed TRACKS.

N9 LOWER EDMONTON

- 68 CROSS KEYS. Still closed.
- 68 OLD CIRCUS. Charrington: IPA.

N10 MUSWELL HILL

- 70 ROYAL OAK. Watney: Combes Bitter.

N13 PALMERS GREEN

- 75 CAMBRIDGE. Charrington: IPA (note correct name).

N15 SOUTH TOTTENHAM

- (80) CHARLIE BROWNS, 344 High Rd. Charrington. No real ale, (omitted in error).
- 80 OLD SEVEN SISTERS. Renamed J.J. MOONS, now a Free House. Marston: Pedigree, Tolly Cobbold: Bitter, Original, Truman: Sampson. Beers may vary.

N16 STOKE NEWINGTON



- 82 PEGASUS renamed CHAS & DAVES
- 84 ROYAL OAK. Courage: Best Bitter.
- 84 SUTTON ARMS. H unused (confirmation).
- 84 THREE CROWNS. Flowers: Original Bitter.
- 85 WOODMAN. Wethered: Bitter.

N17 TOTTENHAM

- 87 NORTHUMBERLAND ARMS. No real Ale, H removed.

N19 UPPER HOLLOWAY

- (92) DARES BAR, 10B Archway Mall, Free House. A new pub. No real ale.
- 93 PLOUGH. H unused (confirmation).
- 93 ST JOHNS TAVERN. Watney: Combes Bitter, Webster: Yorkshire Bitter.
- 93 WHITTINGTON STONE. Charrington: IPA.

N20 WHETSTONE

- 94 HAND & FLOWER. Closed.
- 95 THREE HORSESHOES. Wethered: Bitter.

N21 WINCHMORE HILL

- 97 SALISBURY ARMS. Bass, Charrington: IPA.

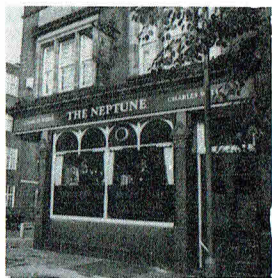
N22 WOOD GREEN

- 99 NIGHTINGALE. Closed for rebuilding.
- 99 WELLINGTON. Official address is 679 Green Lanes, although entrance is now in Turnpike Lane. No real ale, H unused.

NW1 CAMDEN TOWN

- 102 EDINBURGH CASTLE. Closed due to fire.
- 102 ELIZA DOOLITTLE. Correct address is 3, Ossulton St.
- (109) RAILS, Euston Square. Free House. A new real ale pub, Truman: Best Bitter (labelled Rails Draught Bitter), Webster: Yorkshire Bitter.

- 110 UNICORN. renamed **BLITZ**, H removed.
 111 YORK & ALBANY. Closed.
 111 BLACK CAP, H unused (confirmation).
 111 BRIGHTON, H unused (confirmation).
 111 COLLEGE ARMS. Courage: Best Bitter, Directors.
 111 DEVONSHIRE ARMS. Courage: Best Bitter, Directors.
 111 MOTHER RED CAP. Closed.
 111 LOCOMOTIVE. Flowers: Original Bitter, Samuel Whitbread: Strong Ale.



- 113 NEPTUNE. Now a Wells tied house; Wells: Eagle Bitter, Bombardier.
 113 WHEATSHEAF. Courage: Best Bitter, Directors.

NW3 HAMPSTEAD

- 122 ROSSLYN ARMS. Should read "Licencee has held the tenancy for over 30 years".
 122 SWISS COTTAGE. Now owned by Samuel Smith, currently closed.

NW4 HENDON

- 126 GREYHOUND. Now a Free House; Brakspear: Special Bitter, Flowers: Original Bitter, Greene King: Abbot Ale, Wethered: Bitter, Bulmer: Traditional Cider.
 127 MANNINGS. +Webster: Yorkshire Bitter.
 127 MIDLAND ARMS. Renamed **LONDON**, MIDLAND & SCOTTISH.

NW5 KENTISH TOWN

- 130 NEWBERRY ARMS. Should read **NEWBURY ARMS**.
 130 NEW MITRE. No real ale, H removed.
 131 OXFORD TAVERN. Renamed **VULTURES PERCH** now operated by Richard Bramson's virgin group, -Watney: Stag Bitter, +Ruddle: County, Watney: Combes Bitter.
 131 JUNCTION TAVERN. Courage: Best Bitter, Directors.
 131 MALDEN ARMS. Courage: Best Bitter.

NW6 KILBURN

- 133 RAILWAY. No real ale, H removed.
 (133) CANTERBURY ARMS, 88 Canterbury Rd. Ind Coope. No real ale, (omitted in error).
 133 LILLIE LANGTRY. H unused (confirmation).

NW8 ST JOHNS WOOD

- 139 DUKE OF YORK. correct address is 2 St Ann's Terrace.
 (141) ACACIA BAR, St. Johns Wood Station. Truman. No real ale, (omitted in error).
 (141) RED HOUSE, 155 Park Road. Closed, still standing. (omitted in error).
 141 RICHMOND ARMS, 1 Orchardson St. Watney: Combes Bitter, Webster: Yorkshire Bitter.

NW10 WILLESDEN

- 145 BUCCANEER. Renamed **BUCKS**.
 145 COACH & HORSES. Renamed **SPORTS** +Ruddle: County.
 146 CROWN. Is Courage (not Truman), Courage: Best Bitter, Directors.
 146 PLUMES HOTEL. Renamed **PLUMES**, Greene King: Abbot Ale, Flowers: Original Bitter.
 146 OLDE CROWN (YE). H unused (confirmation) (note correct name).

NW11 GOLDERS GREEN

- 147 WHITE SWAN. Correct address is 243 Golders Green Road.
 147 CASTLE. Correct address is 452 Finchley Road.

BARNET

- 150 KING WILLIAM IV. Correct address is 18 Hadley Green.
 150 LORD NELSON. Now a Free House, -Ind Coope: Bitter, +Greene King: IPA, Abbot Ale, Ruddle: Rutland Bitter, County. Beers may vary.

NEW BARNET

- 153 RAILWAY BELL. Renamed **RAT & PARROT**, now a Vaux owned real ale Free House, Arkell: Kingsdown, Darley: Thorne Best Bitter, Marston: Pedigree, Samuel Smith: Old Brewery Bitter, Vaux: Samson, Ward: Sheffield Best Bitter. Beers may vary.

EDGWARE

- 155 RAILWAY HOTEL. +Webster: Yorkshire Bitter.
 155 WHITE SWAN. Should read **WHITE LION**.
 155 BROADWAY. H unused (confirmation).

ENFIELD

- 164 PLOUGH. Correct address is 132 Hertford Rd.
 (164) RIFLES. Formerly **ROYAL SMALL ARMS TAVERN**, No real ale. (omitted in error).

BEERS & BREWERS

- 169 WATNEY COMBE REIDE. Delete Manns IPA, no longer available in London; and Hammettons: Porter, no longer brewed.
 169 TRUMAN. Delete Prize Mild, no longer brewed.
 170 WHITEBREAD. Delete Fremlines Tusker, no longer brewed. Add Samuel Whitbread Strong Ale (1048) — brewed at Marlow.
 172 SAMUEL SMITH. Add Museum Ale (1050).
 (172) YOUNG, Wandsworth, London SW16. Bitter (1036), Special Bitter (1046), Winter Warmer (1055), (omitted in error).
 (177) FLOUNDER & FIRKIN, 54 Holloway Rd. London N7. A Bruce's brew pub. Fish T'Ale (1037), Whale Ale (1044), Dogbolters (1059). Bruce's house beers are kept under a blanket of CO₂.
 (177) YORKSHIRE GREY, 2 Theobolds Rd. London WC1. A brew pub controlled by Clifton Inns, a subsidiary of Grand Met. Headline Bitter (1037), Holborn Best Bitter (1047).

RBIL continued

SW11 BRITISH FLAG, 103 Culvert Rd. Webster: Yorkshire Bitter.

SW11 QUEEN VICTORIA, 82 Falcon Rd. Courage: Best Bitter, Directors.

SW18 BUILDERS ARMS, 44 Longfield St. Courage: Directors (G).

KINGSTON PUNTERS, Ram Passage. Boddington: Bitter. A new Nicholsons Bar.

WEST

W4 STAG, 177 Acton Lane. Watney: Combes Bitter, Webster: Yorkshire Bitter.

W6 EAGLE ARMS, 84 Glenthorne Rd. Webster: Yorkshire Bitter.

W6 GROVE TAVERN, 83 Hammersmith Grove. Webster: Yorkshire Bitter.

W6 SALUTATION, 154 King St. Fuller: London Pride, ESB. A long awaited conversion.

W11 PORTOBELLO STAR, 171 Portobello Rd. Wethered: Bitter.

DELETIONS

The following pubs should be deleted for the reasons given., The number in brackets after each entry refers to the page number in 'Real Beer in London' or the Supplement (S prefix), or to the London Drinker Update number (U prefix). H represents handpumps. The information provided is correct to the best of our knowledge. If any pubs have reverted to selling real ale the compilers would be pleased to receive details.

EAST

BARKINGSIDE OLD MAYPOLE. Ind Coope, H unused (S19)

HAROLD HILL DUCKWOOD INN. Truman, renamed **DRAKES**. H unused (S21).

NORTH

N4 MANOR HOUSE. Watney, H removed (U13).

N7 GANGSTERS WINE BAR. Free House, closed (S25).

N22 NIGHTINGALE. Taylor Walker, closed for rebuilding (67).

N22 WELLINGTON. Watney, H unused (99).

NORTH WEST

NW1 BRIGHTON. Watney, H unused (U20).

NW1 ROYAL EXCHANGE. Courage, H removed (U20).

NW1 YORK & ALBANY. Watney, closed (S31).

NW6 RAILWAY. Watney, H removed (U6).

SOUTH WEST

KINGSTON SEVEN SAXONS. Courage, closed (118).

CHANGES

CENTRAL

W1 TROCADERO LONG BAR. Renamed **RUPERT STREET JUNCTION** (U12).

WC2 FREEMASONS ARMS. -beers listed in RBIL. +Samuel Smith: OBB, Museum Ale. Another well established Free House is absorbed into Sam Smith's tied estate with a consequent reduction in beer choice (34).

EC3 LAMB TAVERN. -Bass, -Wethered Bitter. Yet another Free House disappears, this time absorbed by Youngs. Only Young's beers remain. (40).

NORTH

N1 CLOTHWORKERS ARMS. -Arkell BBB, -Fuller: London Pride, +Rayment: BBA, +Marston: Pedigree. (U5).



N1 FOX TAVERN. Renamed **SLUG & LETTUCE** (U20).

N1 WATERSIDE INN. -Bass, -Charrington: IPA, -Samuel Smith: OBB. +T. Hoskins: Bitter (OG1039), Penns Ale (OG1045). +Marston: Pedigree. Now owned by Hoskins Brewery of Leicester, but still operated as a Free House. Expensive (U2).

N6 HAMPTONS. Renamed **BLACK ROSE** (S24).

N16 PEGASUS. Renamed **CHAS & DAVES** (S26). Owned by the famous musical duo.

SOUTH EAST

SE1 ANCHOR TAP. -Courage: Best Bitter, Directors. +Samuel Smith: OBB. Now a Sam Smith's tied house. (S35).

SE1 RISING SUN. Renamed **PAPER MOON WINE & ALE BAR**. +Bass, +Market: Blackfriars Bitter (OG1038), Blackfriars Strong Bitter (OG1050). Brewed at Market Brewery, SE1 (81).

SE24 TULSE HILL TAVERN. +Courage: Best Bitter (91).

SE27 HORNS TAVERN. +Courage: Best Bitter (92).

WEST

W2 PRINCESS ROYAL. -Watney: London Bitter, -Ruddle: County, +Watney: Combes Bitter (S53).

W11 PRINCESS ALEXANDRA. Renamed **PORTOBELLO GOLD**. -Watney: London Bitter, +Watney: Combes Bitter, +Webster: Yorkshire Bitter (129).

CORRECTIONS TO UPDATE 22

DELETIONS

N4 EARL OF ESSEX. Already deleted in Update 21.

CAMPAIGN FOR REAL ALE

1986 Good Beer Guide

· OVER 5,000 GREAT BRITISH PUBS · SPECIAL FEATURES ·
· COMPLETE LISTING OF BRITISH REAL ALES ·

GOOD BEER GUIDE 1986

ON SALE NOW -



"THE BAR-ROOM SHUFFLE"
(Trad: Walk the line)

CAMPAIGN FOR REAL ALE

Shepherd Neame Appointments

- * Shepherd Neame, Kent's independent brewery company, have appointed four new Technical Directors.

They are Brian Ballard (finance), Peter Hare-Scott (managed houses and free trade), F E 'Rusty' Thorneycroft (tied trade), and John Withey (brewing).

The Technical Directors will be members of an Executive Board responsible, with Shepherd Neame's main Board of Directors, for the day-to-day running of the Faversham-based company.

Said Shepherd Neame chairman Mr Robert Neame: "We have appointed the Technical Directors to provide a stronger, professional management base to take Shepherd Neame into the 1990's".

John Withey is ex-head brewer at Whitbread's Sheffield Exchange brewery, and in a 22-year career with Whitbread also held senior positions at Chiswell Street, Luton and Portsmouth breweries. (Pictured *opposite*).

Shepherd Neame also announce the reinforcement of the company's secretariat



with the appointment of George Barnes as Assistant Company Secretary with special responsibility for property matters.

Mr Barnes joined Shepherd Neame in 1978 as assistant tied trade manager following a career in teaching.

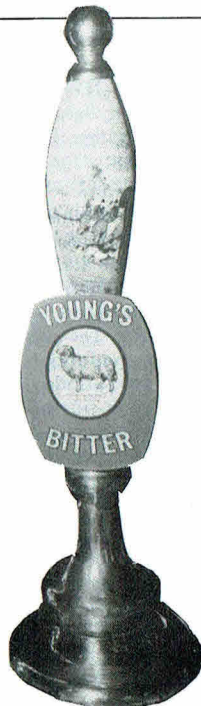
All 146 of our
pubs sell real ale

YOUNGS
OF WANDSWORTH

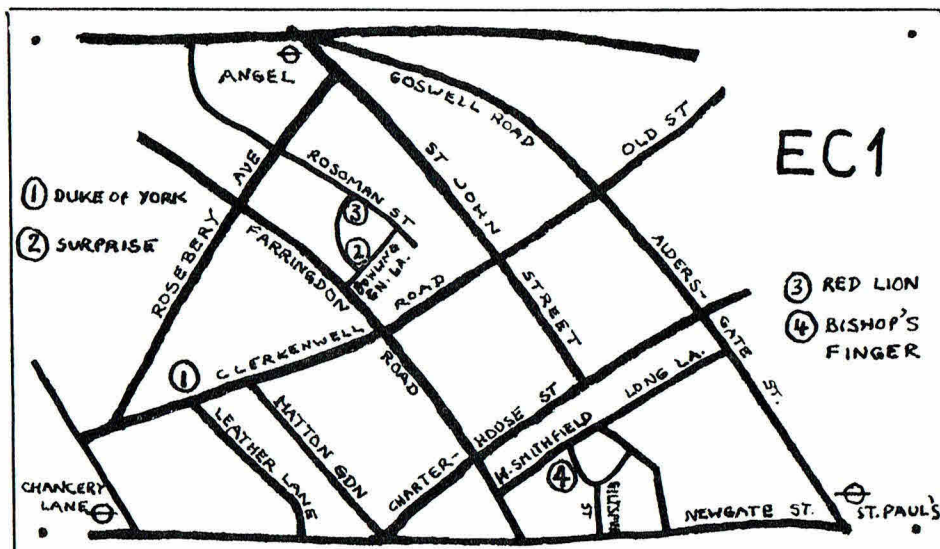
Brewers of traditional beer since 1831



Young & Co's Brewery PLC
The Ram Brewery, SW18 4JD



LIQUID LUNCH Clambering round Clerkenwell



It all started off with an intended trip to the Euston/Kings Cross area to investigate prospects for a beer and curry-type meeting with my brother. London Buses Ltd had other ideas, though, and had carefully hidden away any buses going in an appropriate direction.

Postponing the NW1 jaunt I set off on foot towards Hatton Garden, walked on through to the end of Leather Lane's well-known street market and spotted the 'Duke of York' (Watney) on the opposite side of Clerkenwell Road.

This pub sells Yorkshire, Combe's and Ruddle's County and has a 'beer of the week' available for 70p in lunchtime and evening happy hours, as noted in London Drinker. I had just missed the lunchtime one, so had to pay 90p for some pretty good Webster's. The pub is a large single corner bar with very comfortable furnishing and a busy lunchtime food trade. I spotted the semi-legendary folk-singing and letter-writing CAMRA member Graham Larkbey in one corner and in another a group of women with moustaches (presumably stick-on) who seemed to be having a lot of fun and Malibu.

I then headed in the only direction that looked vaguely familiar, towards Farringdon Road, had a look at the extremely basic fizzy 'Horseshoe and Maggie' to the south, crossed the main road and found the 'Surprise' (Watney) just up Bowling Green Lane. This seems to have been bought recently from Ind Coope, and retains their frosted glass window design.

Unfortunately the Yorkshire I had (94p a pint) was well on the vinegary side and, despite a promising looking video jukebox and a few nice decorative features, it was clear that the place was far more interested in promoting high-profit bistro-like eating activities than selling decent beer.

I made a rapid exit without getting into a lengthy discussion with the menu-wielders behind the bar. In the distance loomed an adventure playground. This proved to be called '3 corners' and was most entertaining to watch, although the kids' inexhaustible Tarzanoid antics in the hot sun made me feel thirsty just looking. In I went to the 'Red Lion' in Rosoman St. just off Skinner St. a Whitbread pub.

This turned out to be a fine three-bar pub with very good Wethered's at 90p and also Flowers'. I sat in the small, comfortable wood-panelled and bench-seated saloon bar and peered into the games bar (busy) and disco-style public bar with a 'top 40' DJ and possibly a go-go dancer, although I wasn't going round to look. This latter bar is over-21s only in the evenings.

So then it was time to get back towards the grind; across Clerkenwell Road again, into St John's Square with the modern box-like 'Coach and Horses' (Whitbread) and back through Smithfield Market with a TGWU branch noticeboard on public view amongst other features.

Continued over

SESQUICENTENNIAL CELEBRATIONS

Late in 1835 there were celebrations on the completion of the new White Cross Tavern (now known as the WHITE CROSS HOTEL) a two-storey building on Saint Helena's Wharf, Richmond, at the bottom end of Water Lane. There had been a White Cross Inn on the site since the end of the seventeenth century and the earlier building was incorporated into the new, forming the kitchens of the present building.

The history of the pub derives from both the original Richmond Palace (renamed from its earlier title of Shene Palace by Henry VII who also claimed the title Duke of Richmond from that other place in Yorkshire) and subsequently the Convent of the Observant Friars.

The hotel takes its name from the sign of these Franciscan Greyfriars and they are affectionately celebrated on the label of a limited edition bottling of a special brew to celebrate the century and a half of the present building.

The idea for the special beer, which comes in 355ml. (12½ fl.oz.) bottles came from Youngs Brewery Chairman, John Young and the venture has been strongly supported by Bob Storey who has organised the whole exercise and Dan Kopman who suggested the use of the distinctive bottle which has hitherto been used for export purposes only.

Landlord, Dick Mullis, tells us that the beer, which is a strictly limited issue, will sell at 90 pence a bottle and it is expected to be much sought after by bottle and label collectors. Incidentally, he informs us that the pub is still selling Young's Ordinary Bitter at 85 pence a pint.

Liquid Lunch continued

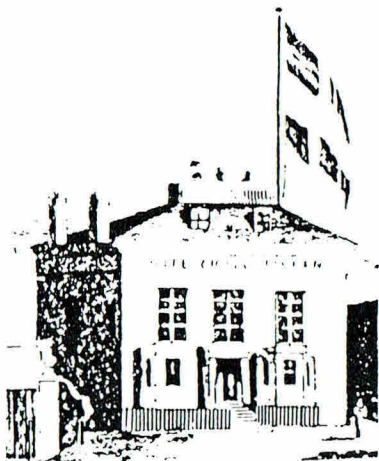
I chose the very well known 'Bishop's Finger' for my last stop and had a good but not spectacular pint of Shepherd Neame Master Brew for 88p. Invicta was also available.

The pub, which retains its previous large old 'Rutland' sign, contained the usual mixture of brain surgeons, meat workers, neo-fascist Post Office workers and office people (the latter group surprisingly devoid of any of my colleagues).

I finally staggered back to a rather somnolent afternoon at the desk and started to plan a visit to the 'Paper Moon', SE1 which hadn't even opened yet but might be good for a free sandwich when it did . . .

R.M. Rider

As can be seen from the contemporary illustration below, the building has grown an extra storey in the last 150 years but its character has not been lost; nor has the unusually sited fireplace below one of the windows in the bar which still houses a proper fire through the winter.



MORE BEERS GOING

Some time ago we asked in these pages what was happening to Springfield, a Birmingham beer sold in some Charrington houses, and now we hear that it is being completely withdrawn. Lack of demand has been cited as the cause, but when did you last see any publicity effort for it — even in pubs where it was on sale?

The very popular Highgate Old Ale will also not be produced this year by the threatened Charrington owned brewery due to poor sales in its home production area — ie. NOT the South. It has been reported by one furious landlord that as a sop the Southern outlets may be offered Fuller's ESB as a replacement.

Meanwhile there are rumours that Watneys are unhappy with how their Combes bitter is going although in this case there has been rather more publicity put about. Indeed, on a recent visit to a certain pub not far from the Oval your reporter found it festooned with Combes beer mats, ashtrays and bar towels. Unfortunately, the barman found when asked for a pint of Combes that there wasn't any in stock; or at least, none that was fit to be served.

LETTERS TO THE EDITORS

Dear Andy,

I was delighted to see the letter from Rob Tough in the September London Drinker about noisy pubs. I believe that CAMRA would receive very wide support for a campaign which sought not to ban music but to seek a "no loudspeaker area", however small, in all pubs where music is thought to be necessary. Customers could then have a choice (which is then in line with CAMRA philosophy). It is really ludicrous to go into a place like the Fountain, Twickenham (a Beefeater), find three customers and no corner without its loud speaker playing music over which the customer has no control. It makes life easy for the barmen!

I have been raising this recently with managements whenever the opportunity arises along the lines, "Why does there have to be music everywhere?"

Some reactions:

1. Fountain (Only visited in emergency, but it is on the doorstep.): "We will think about it. It is central policy — as staff we get used to it. It was the same in the last Beefeater I worked in." Four successive managements have declined to act.

2. Prince Blucher, Twickenham (Fullers) has awful choice of music. Local management seems a bit like the Midland Bank — pretend to listen but doesn't take the slightest notice. I wrote to Fullers who promptly replied that they would think about it. I'll stick to the Albert!

3. Admiral Nelson, Whitton (Fullers): An excellent pub apart from the music — a limited choice of tapes and dreary. The beer is cheap and well kept; the food good and the bar staff friendly. On a good day it is possible to get the volume turned down but no-one will cut the wires to one of the loud speakers. All lunchtime customers hate the music; it is very sad because there is no near alternative.

4. Christie's, Richmond (Eldridge Pope): After two whole minutes of silence I thought I would sample one of their other interesting beers. I was just about to order when back came the music so I asked why. The manager said, "If we don't have it customers say, 'Where is the atmosphere?'" This was at 12.00 on Friday lunchtime and the only customers were an old couple and an old chap. Instead, I adjourned to the nearby White Cross — No music; 50 customers and plenty of atmosphere. Are managers really thick?

5. George and Devonshire Arms, Chiswick (Fullers): No Chiswick — perhaps it doesn't travel well. Music everywhere and a fairly empty pub. I moved next door to the Mawson Arms —

much quieter music and the pub was full (including lots of Fullers staff).

From discussions with other customers, it would seem that the music is unpopular but thought to be primarily for the benefit of the bar staff; certainly staff are unwilling to act on complaints. Could I suggest that CAMRA produces a large warning notice which can be prominently displayed outside pubs which reads, "For the comfort of our bar staff, music is relayed to all areas of the pub. The management regrets any inconvenience this may cause to customers".

I hope that all CAMRA members will air this problem when having dealings with brewers, managers, landlords, staff etc. and that it will get plenty of publicity.

**Tom Vickers,
Twickenham.**

Editor's note:

Tom sent me this letter in my position as branch chairman together with a greatly shortened version for publication. However, I felt that the whole piece deserved wider circulation and so I have taken the liberty of including it here in full.

Andy Pirson.

Dear Martin,

At the Herts branches liaison meeting I was volunteered to write to you seeking some publicity in London Drinker for a planned march in St. Albans. This will primarily be against S&B's attempted takeover of Matthew Brown, but will also attempt to highlight the threat to independent breweries generally.

The march is due to take place on Saturday, the 9th November, starting from HQ at 11.00am and proceeding to the S&N depot in St. Albans. It is hoped that some arrangement will be made with a local landlord concerning refreshments after the walk.

Considering the adverse comments concerning the lack of southern participation in the Edinburgh march, this gives us the chance to show certain northern branches that we can do some campaigning.

Danny Blyth at HQ will be coordinating matters so please contact him if you need further details.

Cheers,

Bill Austin,

Watford & District Branch.

Continued on next page

OUT OF TOWN — The Botolph Arms, Peterborough.

The Botolph Arms is situated on the A605 Oundle Road, less than 5 minutes' drive from the city centre and the East of England Showground. It was formerly a large farmhouse set in a big garden at the end of a long drive. It is surrounded by fields and one can easily share a pint with the local cows. It gives the feeling of being in the country, but you are well inside the city boundaries. Being a free house, it serves five real ales, including Pedigree, Abbot and Hook Norton. Mine hosts Albert and Christine were formerly at the Fleece, Bretforton.

The pubs interior consists of three rooms interlinked, and it is deservedly popular with all ages. Having facilities for the family helps; the kids can play in safety on the swings and slides in the garden.



The lunchtime pub grub is also highly recommended. Well worth a visit, the Botolph gets crowded at weekends, but is the perfect setting for the family on a sunny day, when you can sit out and escape the background music.

NORTH LONDON PUB NEWS

The latest brewery to buy a pub in London is Hoskins of Leicester, who took over the running of The Waterside Inn, York Way N1.

But before you grab for your copy of the North London Beer Guide be warned, Hoskins believe that London streets and customers pockets are paved with gold for it will cost you £1 for Hoskins Bitter (O.G.1039) and £1.06 for Penn Ale (O.G.1045).

The Hemingford Arms, Hemingford Rd. N1. A run down Taylor Walker House has been sold and due to open in November as a Free House.



Pictured holding the acclaimed "PUB OF THE MONTH" award are Keith and Eileen of the GBG listed Railway Tavern, Mill Hill, NW7. Keith Smolden trainee "Sumo" wrestler and TV Darts celebrity Eileen (180) Jackson both agree "It's a major contribution to the Real Ale cause". Licensees Peter and Sandra Walton, not pictured due to no film in the camera at the presentation, are looking forward to an extension to the pub to be completed by Christmas.

Continued

Dear Sir,

RIP OFFS — "Swan"66 Bayswater Road, London W2.

On Monday 23rd September I popped in at the above mentioned for a quickie and was shocked to say the least at the price of Boddingtons! 107p per pint! Ironically I spent the weekend in Manchester and had a pint of Boddy's for 73p!

What added insult to injury was an inch of froth at the top and when I asked the barperson to "top it up" the sarcastic reply was "Must make sure we get the very last half inch." At that price the 'head' would be equivalent to a 10p reduction.

In future I will vote with me feet and avoid the "Swan" like the plague, and I advise your readers to do the same.

Richard Cheshire, SW5.
P.S. Yorkshire Bitter was also 107p per pint!

Dear Ed.

Being a regular reader each month of the 'Drinker' I am prompted to write to you to ask you to include a nearby pub in your Rip-Offs column. Prices per pint have crept up from 78p a pint twelve months ago to 96p — will it reach a £1 a pint by Xmas?? Probable.

The Lansdowne, Gloucester Avenue, Primrose Hill, NW1. IPA 92p, Bass 96p.

Your journal is an excellent little organ, long may it continue.

An interested reader,
M Watkins

PUB AND PRICES NEWS

- * A recent survey of pub prices carried out by the Caterer and Hotelkeeper gives added proof that London's Drinkers are being ripped off for their beer — which was shown to be the most expensive in the country. The average price of a pint of real ale was shown to be 91p as against a figure for the whole of England and Wales of 78p, whilst in the West Midlands where price levels were the lowest a pint cost only 67.5p. Keg beer came out at costing 75p nationally but 88.5p in London — about the same sort of differential but showing that the real ale drinker is being hit even harder. This is being exaggerated by higher price rises this year — as an example Imperial Inns (part of Courage) recently put 4p on real ale and 3p on most keg. But the lager drinker has it worst of all with a London price of £1.01½. It was also pointed out that this is now more expensive than drinking refined engine oil, a product with a bit more of a kick to it than many lagers.
- * From Sodastream, part of CADBURY, comes news of beer-in-a-bag — a new product expected to enable 20 pints to be produced at home for just £6. All the aspirant home-brewer has to do is to take the bag full of beer making "ingredients" home then fill it with water and leave it for three weeks. The product could well be sold as 'real ale' and marks a further step towards instant beer. Of course you could always just go and get some from a pub... but then you have to pay tax and duty so it costs twice as much. No wonder our pubs are being closed down.
- * Whitbread's latest wheeze is to 'lend support' to a scheme organised by Capital Ventures for raising cash to buy pubs, in partnership with the publicans. Whilst this is likely to see some tied houses gaining the 'free house' status, the catch is that Whitbread is expected to be the 'main supplier' in most cases. Subscriptions from the public are invited, although this looks more attractive to people interested in tax incentives than real ale. For Whitbread it could well be a cheaper way of 'tying' trade than subsidised loans.
- * From GUINNESS comes news of a unique piece of breweriana up for grabs — two diesel rail shunters from its Park Royal brewery named The Walrus and The Carpenter. They have just been replaced by a couple of new engines and a suitable new home is sought.
- * A marriage of opposites seems to have resulted from the recent takeover of ISINGLASS, leading manufacturers of finings which are used as clarifying agents in the brewing process. The buyers were British Tar — lets hope they don't get the products mixed up.
- * In September we reported that the Prince of Orange, Rotherhithe's well known jazz pub, was changing hands. Now we can confirm that it is in new ownership and the jazz is still on — but at a price. Admission remains free but on a recent visit ordinary Trumans bitter was selling at £1.10 and Best Bitter at £1.15. Yet in July 1984 we reported the bitter as being only 78p per pint, with the jazz again being free of course. Adding insult to injury nowadays is the fact that Fosters, Carlsburg and Guinness also sell at £1.10 so that the real ale drinkers are clearly being penalised over and above any extra added on for the music. And the prices are no lower when there isn't a band (ie before the session starts). No wonder the pub was half empty at 9 o'clock on a Friday night.
- * From Hertford McMULLEN have reported profits up about a third to some £1.3million in the half year to March. Much of this rise is due to lager where the company now has its own Hartsman brand and they say that this is cutting into the turnover of traditional ale brands.
- * Over at BULMERS their annual report reveals that one and a half million pints of cider are being drunk each day now, with the total for beer at about 40 million a day. Bulmers now have a steel vat which holds the record of being the largest alcoholic drink container in the world, holding 1.65 million gallons of cider — enough to keep the country going for nine days or so, or to form the basis of the ultimate yard of ale contest.
- * Fullers continue to expand and their latest outlet is the Vulcan, a former free house in the Isle of Dogs right next to land earmarked for luxury housing.

Badger

WHERE IT'S ALL DONE.

Among the odder locations where work was done on this issue were the Tower of London and the Pip's Key Beer Festival. Don't forget, next issue is the last one until February.

Mato

Conway's Latest

The Crown & Anchor
246 Brixton Road, SW9

NOW OPEN

A Two-bar pub
on traditional lines

Serving:

NEW! Brixton Brewery Anchor Ale: O.G. 1050

— Courage Best Bitter — Brixton Best Bitter
Combe Bitter — Ruddles County

Hot food available

CAMRA LONDON AND CONWAY TAVERNS PRESENT

11th Capital Beernight

Balmoral Castle
427 Caledonian Road, N7

on Wednesday 13th November from 7 pm

*Brixton Brewery Warrior and Balmoral Best Bitter
at 60p per pint on presentation of this advert*

Guest speaker at 8 pm

A few minutes' walk from Caledonian Road tube station

CHARRINGTON AWARDS

The top three projects in the 1985 Charrington Community Challenge, in which over 130 pubs all over London have raised thousands of pounds for local worthwhile causes this year, received their awards from local celebrities recently.

Top prize of £1500 from Charrington, to be added to the £2500 already raised for local causes by the pub's regulars, went to the Rising Sun, Walthamstow, where managers Mick and Ann Mullen and their customers have bought a computer for the local Grosvenor House School for physically and mentally handicapped children and a video kit for the Brookfield House School for physically handicapped children, as well as raising cash for other local causes this year.

Britain's top triple jumper John Herbert was on hand to help with the ceremony.

Runners up in the competition were the Engineer, Gloucester Avenue, where £1,000 was raised for the local Frank Barnes School for deaf children, and the Stapleton Hall Tavern, Crouch End, where the regulars clubbed together to take the handicapped children at the Hornsey Centre on an outing to Windsor Safari Park.

Nick Owen of T.V. AM's breakfast-time show pushed over the Engineer's pile of tuppences, and crack England bowler John Emburey was on hand to celebrate the Stapleton's Aussie managers Bryan and Ann Wyatts pub's efforts.

Said Ben Hanbury, Charrington's regional Managing Director who launched the scheme, "We are delighted with the wonderful response that the Community Challenge has generated. It has amply demonstrated the vast amount of local community effort that is mounted through pubs up and down the country, effort too often unrecognised beyond the pubs themselves".

Seventeen other pubs received runners up awards of commemorative plaques and a keg of Carling Black Label lager.



Charrington Regional Managing Director Ben Hanbury presenting to Manager Bryan Wyatt the Community Challenge Runners Up Plaque, and a cheque for £500 to Shubi Raymond, Head Teacher at the Hornsey Centre for Handicapped Children, with England cricketer John Emburey also presenting the cheque.

PUB NEWS.

The Jubilee Inn, High Road North, Finchley, has an extension to lam every Friday and Saturday. Oh yes, you must be over 21, be in before 11pm, and have £1.50 for the cover charge for supper. The beer is increased slightly in price. Beers are GBH, Webster's Yorkshire Bitter and Young's Special.

The Paper Moon, Blackfriars Bridge Road, SE1, is the zany idea of John Beach, who runs four other pubs in London. The idea is to create a pub where women come first and the lads are elbowed out of the bar.

John, who has spent £140,000 smartening up the place, said, "Women have always had to put up with burly blokes jostling them out of the bar and being aggressive. Now we are giving them the chance to hold their own and get served first. If any member of my staff serves a man before a woman, he or she will be sacked — and I mean it". R.M. Rider comments: "I Went in here at its grand opening lunchtime, Tuesday 10th September. It has over the top "theme pub"

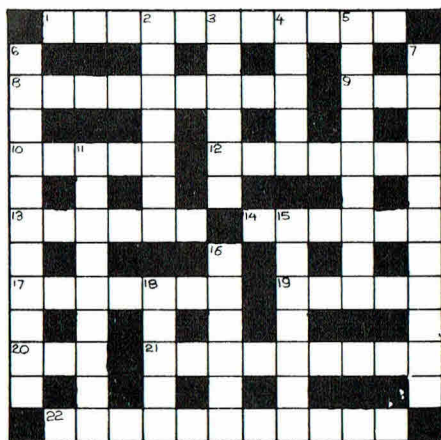
barrels, books, old typewriters etc. scattered around and sells Blackfriars Bitter (96p) (which is also at the BlackFriar and is believed to be Morrells), Charringtons IPA and Bass. So it presumably is still a Charrington house. It was so busy on Free Sandwich day that we couldn't see the "woman first" policy operating, but it sounds a good idea."

* A slight temporary breach of the brewers tie brought an improvement in choice of a sort to some CHARRINGTON pubs over the summer. During a strike at the Runcorn kegery, which produces no less than 15% of the Bats groups output but no real ale at all supplies of bottled beers ran short and extra stocks had to be brought (draughted?) in from outside. Whitbread Brown Ale was seen appearing on the pub shelves together with Light from both Whitbread and Courage. An extension in the choice of real ales in the group's pubs is confidently thought to be a long way away, however.

LONDON DRINKER CROSSWORD

COMPILED BY DAVE QUINTON

£5 PRIZE TO BE WON



ACROSS

1. Puzzles about skinhead causing fight. (5,6)
8. Henry Lowe follows directions on 31st ult. (9)
9. Make sport out of risking all. (3)
10. Western desire to be out on 8. (5)
12. Suffering people in the wrong. (7)
13. Cockney tough turns up oh frozen plain. (6)
14. Robber who's quietly angry. (6)
17. It's not sticking on walls. (7)
19. Time to record Scottish exclamation. (5)
20. Reel right out for fish. (3)
21. Hit water in London. (9)
22. Bury little man consumed by question. (11)

Name.....

Address.....

All correct entries received by first post on 27th November will be entered into a draw for the prize.

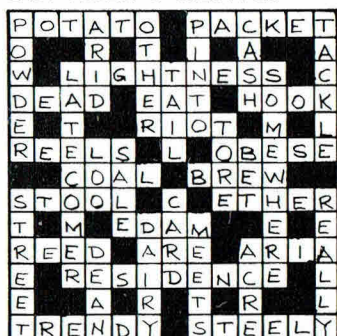
Prize winner will be announced in the February London Drinker.
Solution next month.

All entries to be submitted to:
London Drinker Crossword
25 Valens House
Upper Tulse hill
London SW 2

DOWN

2. Choke Southern dam. (7)
3. Pass water in the streets for confectionary. (6)
4. Admit the Queen is the one in possession. (5)
5. Mr. O'Connor, for each bit of trouble, is criminal. (9)
6. Reveals hat for star turn? (4,7)
7. March 1st 1985. (8,3)
11. Firkin eight pints for a hat? (3,6)
15. Not a good tip for the Titanic. (7)
16. Larger kitchen utensil? (6)
18. Story about blackhead is flat. (5)

LAST MONTH'S SOLUTION



Winner of the prize for the September crossword:
D.M.Lucas, 96 Brigstock Road,
Thornton Heath, Surrey.

Other correct entries received from:
Ivor Boys, B.E.Bradley, Grant Cook,
B.R.Davis, Damien Farrell, B.H.Felton,
Eileen Graves, Anthony Greenbury,
M.J.Moran, P.Spires, Ms.S.Wilson,
Douglas Yexley
Seven other entries were received which were not totally correct.

The Battersea Brewery

in **THE PRINCE OF WALES**

339 Battersea Park Road,

Battersea SW11

Tel: 01-622 2112



Battersea Bitter – 83p Best Bitter – 87p Power House – 97p Mild – 83p

Live music Friday, Saturday and Sunday nights

POLYPINS AVAILABLE from £20.75

Beaconsfield Arms

West End Road, Southall

SERVING

Chudley Local Line 69p
Godson's Black Horse
Wilmots Hop Cone Bitters
& other guest beers.

GODSON CHUDLEY & CO

(Brewers to the Free Trade)
CHISENHALE ROAD
BOW, LONDON E.3.

Brewing Quality with Care

DEAR DIPSY



DEAR DIPSY, I suppose you'd call me a seven-stone weakling. I am in fact 6 stone 13½lb. and growing, and have a pint of mild every day to build me up. But life is a trial. Last week two of my 'friends' dragged me all the way to Brighton, on the pretext of the Great British Beer Festival, just to kick sand in my face. The fact that it's all shingle down there did not restrain them and on the nudist beach the pains reached parts other sand kicking cannot reach.

Ponsonby, Ponders End.

Dear Ponsonby, Desperate causes require desperate remedies. You must switch to bitter. Obviously your daily search for mild in this benighted city is wearing down any benefits of success. You haven't been jogging have you? If so I cannot help you. Your experience on the Brighton nudist beach sounds very painful. The last person who wrote to me after such an experience had got carried away extracting the pebbles afterwards, lost count and now does falsetto backing vocals for Culture Club. Be careful.

DIPSY.

DEAR DIPSY, I am a seven foot Camra hero cyclist, with a good beard, a polite answering machine, a Youngs pub at the end of the road, and a girlfriend who considers I am the bee's knees. Life is basically pretty good — why do you get so many whining letters?

Yours from the next room, Cobblers, Tulse Hill.

Dear Cobblers, Would that all my correspondents had your verve and confidence. Sadly, as my consulting rooms in Balls Pond Road illustrate, London is awash with Worried and Lethargic Lager-drinking Insecure Egregious Sycophants in desperate need of guidance. Keep it up, and write to me again if you need to anytime. In the meantime, keep your voice down — I can't hear the whining wallies.

DIPSY.

P.S. Does Youngs really give you Bee's Knees? Still as long as you don't wear shorts . . .

DEAR DIPSY, I have just got back from six years on an oil rig in the Persian Gulf and feel out of touch. Where are all the:—

- (1) lovely cool fizzy beers
 - (2) R.T. Buses
 - (3) Skateboards
 - (4) Governments
 - (5) Girls with no knickers
- I knew before? I feel lost.

McShagnasty, Leyton.

DEAR McSHAGNASTY, Nothing stands still, does it? Your sentiments seem a trifle mixed, I must say. Still, let me help.

- (1) *I don't quite understand because of the built-in contradictions. I would have hoped you would have grown up a bit while you were away.*
- (2) *Nothing lasts for ever, sadly. Keep the memory green (red in the Central area of course).*
- (3) *I think there are about 7,000 still stored in the Design Centre Warehouse. An all-purpose, all-weather, all-surface, all-conquering version with a Kitemark was produced just as the kids stopped using them.*
- (4) *will be put right sometime in 1987 or 1988. I'd forgotten how long we'd got on without one.*
- (5) *is in your own hand, with any luck; my memory may be hazy, but what exactly was your social milieu before you went?*

DIPSY.

DEAR DIPSY, I am not one of your regular readers, but I wondered if you could tell me how to become an agony aunt? I have admired your work from afar, and feel myself ready to have a crack.

Pippin, Whitewebbs.

DEAR PIPPIN, If you're feeling yourself ready you may not be up to the job at the right time, if you see what I mean. Anyway, what is this "agony aunt" business? If you really have a sincere wish to help those with problems as a sympathetic correspondent, you could do worse than enrol with your nearest Polytechnic school of Soft Touches (address supplied) or the Open University Course in Co-relative Empath (Tuesday evening BBC 2 after the pubs close)

DIPSY.

P.S. Alternatively, if you only feel yourself ready to have a crack, Dr. Antrobus in Tangiers performs such an operation at a very reasonable charge, but I should mention that this is not a required qualification for the job.

Where to buy London Drinker

OUTLETS — EAST and SOUTH EAST PUBS

EC1 ARTILLERY ARMS, 102 Bunhill Row.
 EC1 HORSESHOE, 24, Clerkenwell Road.
 EC1 STICK & WEASEL, 273 City Road.
 EC1 YORKSHIRE GREY, Greys Inn Road.
 EC4 BLAC KFIAR, 174 Queen Victoria Street.
 EC4 WILLIAMSON'S TAVERN, Groveland Ct, Bow Lane.
 E1 FISH & RING, 141A White Horse Road.
 E1 PRIDE OF SPITAL FIELD, 3 Henegge Street.
 E2 APPROACH TAVERN, 47 Approach Road.
 E2 MARKSMAN, 254 Hackney Road.
 E3 PEARLY KING, 94 Bromley High Street.
 E9 CHESHAM ARMS, 15 Mehetabel Road.
 E9 ROYAL STANDARD, 84 Victoria Park Road.
 E11 NORTHCOTE, 110 Grove Green Road.
 E15 BACCHUS' BIN 5-9 Leytonstone Road.
 ONGAR KINGS HEAD, High Street.
 SE1 ANCHOR & HOPE, The Cut.
 SE1 COPPER, 208 Tower Bridge Road.
 SE1 DOGGETTS, Blackfriars Bridge.
 SE1 GOOSE & FIRKIN, 47 Borough Road.
 SE1 HORSESHOE, Melior Street.
 SE1 PINEAPPLE, 53 Hercules Road.
 SE1 WELLINGTON, Waterloo Road.
 SE3 BRITISH OAK, 109 Old Dover Road.
 SE5 PHOENIX & FIRKIN, Denmark Hill Station, Windsor Walk.
 SE5 WICKWOOD TAVERN, 58 Flaxman Road.
 SE7 McDONNELLS, 428 Woolwich Road.
 SE7 ROYAL OAK, 54 Charlton Road.
 SE10 GUILDFORD ARMS, 55 Guildford Grove.
 SE10 NORTH POLE, 131 Greenwich High Road.
 SE10 ROYAL GEORGE, Bisset Street.
 SE12 SUMMERFIELD TAVERN, Lee.
 SE13 DUKE OF CAMBRIDGE, High Street.
 SE15 MAN OF KENT, Nunhead Green.
 SE15 OLD NUN'S HEAD, Nunhead Green.
 SE16 BLACKSMITH'S ARMS, 357 Rotherhithe Street.
 SE16 MANOR HOUSE, 78 Galleywall Road.
 SE16 PRINCE OF ORANGE, 118 Lower Road.
 SE17 TANKARD, Walworth Road.
 SE18 MELBOURNE ARMS, 81 Sandy Hill Road.
 SE18 QUEEN VICTORIA, 118 Wellington Street.
 SE18 VILLAGE BLACKSMITH, Hillreach.
 SE19 QUEENS ARMS, Westow Hill.
 SE19 ROYAL ALBERT, Westow Hill.
 SE20 GOLDEN LION, Maple Road.
 SE20 LONDON TAVERN, Maple Road.
 SE24 COMMERCIAL, 11 Raiton Road, Herne Hill.
 SE25 ALBERT, Harrington Road.
 SE25 GOAT HOUSE, 2 Penge Road.
 SE25 SHIP, 55 High Street.
 SE26 DULWICH WOOD HOUSE, 39 Sydenham Hill.
 SE26 GREYHOUND, 315 Kirkdale.
 SE27 HOPE, Norwood High Street.
 BECKENHAM JOLLY WOODMAN, Chancery Lane.
 BEXLEY BLUE ANCHOR, Bridgen Road.
 CROYDON DOG & BULL, Surrey Street.
 CROYDON LION, Pawsons Road.
 CROYDON SHIP, 47 High Street.
 CROYDON TWO BREWERS, 221 Gloucester Road.
 SIDCUP JOLLY FENMAN, 66 Blackfen Road.

OFF TRADE

E4 Waltham Wines, 72 Sewardstone Road.
 SE3 Bitter Experience, 128 Lee Road.
 SE23 2 Brewers, 97 Dartmouth Road.
 SE27 Wholecellars, 8 Norwood High Street.
 BEXLEYHEATH Bitter Experience, 216 Broadway.
 BROMLEY Bitter End, 139 Masons Hill.

OUTLETS

WEST CENTRAL, AND NORTH PUBS

WC1 CALTHORPE ARMS, 252 Grays Inn Road.
 WC1 LAMB, Lamb's Conduit Street
 WC1 MOON, 18 New North Street.
 WC1 PAKENHAM ARMS, 1 Pakenham Street.
 WC1 SUN, 63 Lamb's Conduit Street.
 WC2 CROWN & ANCHOR, 22 Neal Street.
 WC2 GEORGE IV, 28 Portugal Street.
 WC2 MARQUESS OF ANGLESEY, 39 Bow Street.
 NI CAMPBELLS, 21 Bridport Place.
 NI CROWN, Cloudestey Road.
 NI GEORGE IV, Copenhagen Street.
 NI LORD WOLSELEY, White Lion Street.
 NI MALT & HOPS, 33 Caledonian Road.
 NI PRINCE ARTHUR, 49 Brunswick Place.

N1 WINDSOR CASTLE, 211 Liverpool Road.
 N2 OLD WHITE LION, Great North Road.
 N4 MARLERS, 29 Crouch Hill.
 N6 VICTORIA, 28 North Hill.
 N7 BALMORAL CASTLE, Caledonian Road.
 N7 FAT HARRY'S, 60 Isledon Road.
 N7 FAVOURITE, Queensland Road.
 N7 FLOUNDER & FIRKIN, 54 Holloway Road.
 N7 RAILWAY TAVERN, 10 Roman Way.
 N8 HARRINGAY ARMS, 153 Crouch Hill.
 N8 PRINCESS ALEXANDRA, Park Road.
 N12 MOSS HALL TAVERN, 283 Ballards Lane.
 N14 MERRYHILLS, Bramley Road.
 N16 MARLERS, Stoke Newington High Street.
 N16 ROSE & CROWN, 199 Stoke Newington, Church Street.
 N19 MARLERS, 19 Archway Road.
 N20 BULL & BUTCHER, 1277 High Road, Whetstone.
 N20 CAVALIER, 67 Russell Lane.
 N22 NAGS HEAD, 303 High Street.
 N22 STARTING GATE, Buckingham Road.
 NW1 ELIZA DOOLITTLE, 3 Ossallton Street
 NW1 NEPTUNE, 51 Warrington Street.
 NW1 QUEEN'S HOTEL, 49 Regents Park Road.
 NW1 VICTORIA, 2 Mornington Terrace.
 NW3 WELLS HOTEL, 30 Wells Walk.
 NW4 GREYHOUND, Church End, Greyhound Hill.
 NW4 MIDLAND HOTEL, Station Road.
 NW4 WHITE BEAR, 56 The Burroughs.
 NW6 QUEENS, 1 Kilburn High Road.
 NW7 RAILWAY TAVERN, Hale Lane.
 NW7 RISING SUN, Highwood Hill.
 NW8 CROCKERS, Aberdeen Place.
 NW10 GRAND JUNCTION ARMS, Acton Lane.
 BARNET ALEXANDRA, Wood Street.
 BARNET SEBRIGHT ARMS, Alston Road.
 BARNET WEAVER, Greenhill Parade, Great North Road.
 EDGWARE CORNERHOUSE HOTEL, Stonegrove.
 EDGWARE RAILWAY HOTEL, Station Road.
 ENFIELD CRICKETERS ARMS, 19 Clise Side Place.
 ENFIELD KING & TINKER, Whitewebbs Road.
 ENFIELD KINGS HEAD, Market Place.
 ENFIELD OLD WHEATSHIEF, 3 Windmill Hill.
 ENFIELD WASH PRINCE ALBERT, 611 Hertford Road.

OFF TRADE

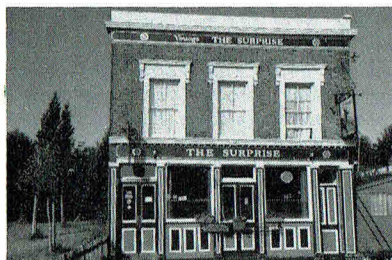
N2 Beer Shop, Pitfield Street
 N11 Originales, Friern Barnet Road.
 N13 Originales, 68 Aldermans Hill.
 NW3 Vinebins, 150 Haverstock Hill.
 NW6 Grogblossom, 253 West End Lane.

CLUBS

N22 Wood Green Labour Club, Stuart Crescent.

OUTLETS — SOUTH-WEST/WEST

SW1 BARLEY MOW, Horseferry Road.
 SW1 BUCKINGHAM ARMS, Petty France.
 SW1 FOX & HOUNDS, Passmore Street.
 SW1 ORANGE BREWERY, Pimlico Road.
 SW1 RED LION, 48 Parliament Street.
 SW1 ROYAL COURT TAVERN, 8 Sloane Square.
 SW2 HOPE & ANCHOR, 123 Acre Lane.
 SW2 TWO WOODCOCKS, 45 Tulse Hill.
 SW4 JOLLY GARDENERS, 115 St. Alphonsus Road.
 SW4 RAILWAY, Clapham High Road.
 SW6 WHITE HORSE, 1 Parson's Green.
 SW8 SURPRISE, 16 Southville, 357 Wandsworth Road.



SW8 NOTTINGHAM CASTLE, Wandsworth Road.
 SW2 BILDFORD ARMS, 409 Clapham Road.
 SW9 NORTHUMBERLAND ARMS, Upper Richmond Road.
 SW9 CROWN & ANCHOR, 246 Brixton Road.
 SW9 WARRIOR (Brixton Brewery Co.) Coldharbour Lane.
 SW10 CHELSEA RAM 32 Burnaby Street.
 SW10 FERRET & FIRKIN, 110 Lotts Road.
 SW11 ANCHOR, Holgate Avenue.
 SW11 HABERDASHERS ARMS, Culvert Road.
 SW11 PRINCE OF WALES, Battersea Park Road.
 SW11 VICTORIA, Battersea Bridge Road.
 SW11 WOODMAN, 60 Battersea High Street.
 SW12 BEDFORD HOTEL, Bedford Hill.
 SW12 DUKE OF DEVONSHIRE, Balham High Road.
 SW12 PRINCE OF WALES, 270 Cavendish Road.
 SW14 RAILWAY TAVERN, Sheen Lane.
 SW15 ARAB BOY, 289 Upper Richmond Road.
 SW15 FOX & HOUNDS, Upper Richmond Road.
 SW15 NORTHUMBERLAND ARMS, Upper Richmond Road.
 SW15 RAILWAY, Upper Richmond Road.
 SW15 WHITE LION, 14 Putney High Street.
 SW16 GREYHOUND, Greyhound Lane.
 SW18 THE GRAPES, 39 Fairfield Street.
 SW18 BREWERY TAP, Wandsworth High Street.
 SW18 FORESTER, Allfarthing Lane.
 SW18 SPREAD EAGLE, Wandsworth High Street.
 SW19 ALEXANDRA, Wimbledon Hill Road.
 SW19 KINGS HEAD, Merton High Street.
 SW19 LEATHER BOTTLE, Kingston Road.
 SW19 PRINCESS ROYAL, Abbey Road.
 SW19 TRAFALGAR, High Path.
 CARSHALTON SUN INN, North Street.
 CHESSINGTON NORTH STAR, Leatherhead Road.
 EAST MOLESEY BELL INN, Bell Road.
 EAST MOLESEY STREETS OF LONDON, Bridge Road.
 KINGSTON GAZEBO, Thames Walk.
 KINGSTON WYCH ELM, Elm Road.
 MITCHAM CRICKETERS, 340 London Road.
 MITCHAM RAVENSBURY ARMS, Croydon Road.
 MOTSPUR PARK EARL BEATTY
 RICHMOND WHITE CROSS, Riverside, Water Lane.
 SURBITON RAILWAY TAVERN, Ewell Road.
 SURBITON VICTORIA, Victoria Road.
 WESTON GREEN GREYHOUND
 WESTBRIDGE PRINCE OF WALES, Anderson Road, Oatlands Park.
 W1 ARGYLL ARMS, 18 Argyll Street.
 W1 BRICKLAYERS, Aybrook Street.
 W2 WHITE HART, Brock Mews North.
 W3 RED LION & PINEAPPLE, 281 High St.
 W4 BELL & CROWN, Strand on the Green.
 W5 RED LION, St. Mary's Road.
 W6 BLACK LION, Black Lion Lane.
 W6 RICHMOND ARMS, 54 Shepherds Bush Road.
 W6 TRUSCOTT ARMS, Shirland Road.
 W10 NARROW BOAT, 346 Ladbrooke Grove.
 W10 VILLAGE INN, Kensal Road.
 W11 FROG & FIRKIN, Tavistock Crescent.
 W14 BRITANNIA TAP, 150 Warwick Road.
 W14 RADNOR ARMS, 247 Warwick Road.
 WENTFORD GRIFFIN, Brook Road.
 BRENTFORD LORD NELSON, Infield Road.

CRANFORD QUEENS HEAD, 123 High Street.
 GREENFORD BLACKHORSE, Oldfield Lane.
 HAMPTON WINDMILL, Windmill Road.
 HAMPTON COURT KINGS ARMS, Lion Gate,
 Hampton Court Road.
 HILLINGDON RED LION, Hillingdon Hill.
 HILLINGDON STAR, Uxbridge Road.
 HOUNSLOW CHARIOT, 34 High Street.
 HOUNSLOW CROSS LANCES, Hanworth Road.
 HOUNSLOW EARL RUSSELL, Hanworth Road.
 SUIBURY BLACK HORSE, Harrow Road.
 TEDDINGTON QUEEN DOWAGER, North Lane.
 TWICKENHAM EEL PIE, 9 Church Street.
 TWICKENHAM OLD ANCHOR, 71 Richmond Road.
 TWICKENHAM POPE'S GROTTTO, Cross Deep.
 WEALDSTONE ROYAL OAK, Peel Road.

CLUBS

SW19 WILLIAM MORRIS, 267 The Broadway,
 Wimbledon.

OFF TRADE

SW11 Majestic Wine Warehouses, Hester Road.
 SW11 39er Webbs Road.
 KENTON Littlemore Wines, Kenton Road.
 NEW MALDEN HOP & VINE, Elm Road.

OUTSIDE LONDON

BRIGHTON (Hants) THREE HORSESHOES.
 BRIGHTON LORD NELSON, Trafalgar Road.
 BRIGHTON QUEENS HEAD, Opposite Station.
 GLASGOW ALLISON ARMS, 720-722 Pollockshaws Road.
 HADLOW DOWN (E.Sussex) NEW INN
 MANCHESTER JOLLY ANGLER, Ducie Street.
 MANCHESTER MARBLE ARCH, 73 Rochdale Road.
 PETERBOROUGH BOTOLPH ARMS, Oundle Road
 PETERBOROUGH STILL, Cumbergate
 SEAFORD (Sussex) WHITE LION, Claremont Road.
 STEVENAGE (Herts) RED LION, High Street, Old Town.
 STOCKPORT (Gtr.Manchester) NEW INN, Wellington Road
 South.
 TORQUAY UPTON VALE, Upton Road.



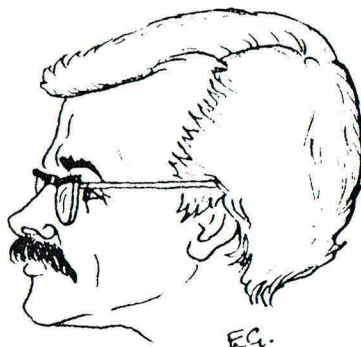
WINCHESTER (Hants) GREEN MAN, Southgate Street.
 WORTHING (Sussex) WHEATSHAF 22, Richmond Rd.



PORTRAIT GALLERY.

The sixth in our occasional series.

Ian Dobson, who has recently been voted "Piss Artist of the Year", is one of the few paid members of CAMRA Ltd, being the Campaign Administrator. He also supports our humble magazine by offering words of encouragement and praise, and a free typewriter.



When you order your next pint of ale



Ask for the original



Everards

Details of stockists available from

EVERARDS BREWERY LTD · CASTLE ACRES · NARBOROUGH · LEICESTER LE9 5BY · TEL (0533) 891010