

VOL.5 No.3
APRIL 1983

12p

LONDON DRINKER

Produced by the London branches of the Campaign for Real Ale Ltd



THIRD SANDOWN PARK
BEER FESTIVAL
SEE INSIDE FOR DETAILS

BRANCH DIARY

If your branch is not mentioned below, please ring the Branch Contact. Events for April of which we have been notified are as follows:

ALL LONDON: Fri 8 (8.30 a.m.). Cycle to Reading AGM. Meet at STEPNEY GREEN Station.

CROYDON & SUTTON: Tue 19 (8.00) Branch Meeting SUN, North Street, Carshalton – Thu 14 (8.00) Social HARVEST HOME, Beddington Lane – Wed 27 (8.00) Social, THE KENLEY, Godstone Road (on A22 close to Kenley Station).

EAST LONDON & CITY: Tue 5 (8.00) Branch CHOBHAM ARMS, Chobham Road, E15 (upstairs room – Wed 6 (8.30) Darts ROYAL STANDARD, Kingsland Road, E2 – Tue 12 City Social DIRTY DICK'S, 202 Bishopsgate, EC2 – Wed 13, Joint Social with N. London CAMPBELLS, Bridport Place, N1 – Thu 14 Social, EARL DERBY, 119 London Road, E13 – Sat 16 (7.30 p.m.) Pub Crawl of E17 Start at CHESTNUT TREE, 757 Lea Bridge Road, E17. Tue 19 (8.00) Committee WHITE HORSE, 48 White Horse Road, E1 – Thu 21 (5.30) City Social SIR JOHN FALSTAFF, Eastcheap EC3 – Sat 23 (7.30) Pub Crawl of E16 start at CALIFORNIA, 12 Albert Road, E16 – Wed 27 (8.30), Darts ROYAL STANDARD, Kingsland Road, E2 – Thu 28 (8.00), Social CROWN & SEPTRIE (just changed from Charringtons to Shepherd Neame, 84 Ben Johnson Road, E1 – Sat 30 (7.00) Pub Crawl of E14 (Isle of Dogs) start at CHARLIE BROWN'S, 116 West India Dock Road, E14.

KINGSTON AND LEATHERHEAD: Thu 21 BRANCH AGM DRUIDS HEAD, Market Place, Kingston.

NORTH LONDON: Tue 5 Branch PRINCESS OF WALES, Chalcot Street, NW1 – Wed 13 Joint Social with E. London CAMPBELLS, Bridport Place, N1 (Sam Smith Film and talk by Brewery Rep.) – Tue 19, Two Pubs Social, CLISSOLD ARMS and ALEXANDRA, Fortis Green, N2 – Tue 26, Social MARQUIS OF ANGLESEA, Ashmill Street, NW1 (new Charles Wells outlet) – Mon 2 May, Mayday lunchtime, Social DICKS BAR, Tottenham Lane, N8.

RICHMOND & HOUNSLOW: Thu 14 (8.00) Open Committee POPES GROTO, Cross Deep, Twickenham – Mon 18 (8.00) BRANCH AGM, WHITE BEAR, Kingsley Road, Hounslow, Thu 28 (8.30) Social, WINDMILL, Windmill Road, Hampton Hill.

SOUTH WEST LONDON: Thu 14 (8.00), Branch HABERDASHERS ARMS, 47 Culvert Road, SW11 – Sun 24 (12 noon) Social DUKE OF DEVONSHIRE, 39 Balham High Road, SW12 – Tue 26 (Joint with Kingston and Leatherhead) Crawl of Merton (8.00) NELSON ARMS, (8.30) PRINCESS ROYAL, (9.15) TRAFALGAR (Gales & Fullers).

BRANCH CONTACTS

BEXLEY	DES WARD	Erith 45716(H)	Erith 33020 x 4 (W)
BROMLEY	ROGER MASON	464 2909 (H)	407 446 x 294 (W)
CROYDON & SUTTON	DAVE HAMER	647 0992 (H) Epsom	41511 x 66 (W)
E.LONDON & CITY	PETER ROBERTS	Upminster 23581	213-7374 (W)
ENFIELD & BARNET	TONY MORGAN	440-2186 (H)	283 1000 x 2944 (W)
KINGSTON & LEATHERHEAD	JOHN NORMAN	546 3476 (H)	Weybridge 47282 x 2659(W)
NORTH LONDON	LAURIE GORDON	448 1692 (H)	359 1340 (W)
RICHMOND & HOUNSLOW	ANDY PIRSON	977 1633 (H)	
SOUTH-WEST ESSEX	CHRIS CASHMORE	Brentwood 211703(H)	283 1030 x 356 (W)
SOUTH-EAST LONDON	DAVE FOORD	690 5104 (H)	932 5886 (W)
SOUTH-WEST LONDON	JOHN DAVIS	670 0734	
WEST LONDON	RODNEY HOLLOWES	723 2798 (H)	
WEST MIDDLESEX	KEITH WILDEY	423 1243 (H)	965 7417 (W)

Contributions, correspondence and subscriptions (£1.40 for 6 months) should be sent to: Stan Tompkins, 122 Manor Way, Uxbridge, Middlesex.

May issue available end of April, closing date for copy 8th April.

The views expressed in this publication are those of the individual contributor and are not necessarily the view of either the London Branches of CAMRA or the Campaign for Real Ale Limited.

LONDON DRINKER is published by the London Branches of CAMRA, the Campaign for Real Ale Limited.

Editors: Martin Smith, Chris Cobbold.
Tel: 674 0556.

Andy Pirson, 22 Fulwell Rd, Teddington, Middx.

ADVERTISING

Roger Mason, Flat 12, 89 Bromley Rd, Bromley Kent BR2 0AA. Tel: 407 4466 ext 294 (W) 464 2909 (H).



A new broom – yes. But sweeping clean? – Well, that is unnecessary when everything is in order. We may be a new Editorial Team, but we have an unenviable task of following our predecessors, Ron Atkins and Mike Hammer-sley, who have run LONDON DRINKER virtually unaided for so long.

A short while ago one of our contacts was told: “London Drinker”? Oh, you mean SOUTH London Drinker!” What rubbish. A number of our team may live near to each other and South of the Thames. (Incidentally, a larger number don’t). But this is an ALL – London beer magazine, and we can only publish what we receive. If your area isn’t featured, it darned well should be, and either no-one is writing, or no-one is campaigning.

The Editorial Team is here and ready to go, with plenty of experience in technical journalism (in the case of one, over eleven years). But with all the goodwill, experience and enthusiasm in the world, without the information we might just as well pack up. So go to it – deathless prose isn’t essential. Just give us the tip, or jot down a few lines, and we will do the rest. Or better still send us your articles. We want to make a go of this, and rely on our readers for support. Over to you . . .

C.C., A.P., M.S.

■ WIN A POLYPIN . . .

of real ale, which is the prize in a competition announced in last What’s Brewing. All you have to do is to produce one of the designs chosen for CAMRA’s Christmas Cards. No restrictions, except that they must relate to Real Ale. There is no limit to the number of entries or stipulation as to the medium used.

- THE GOOD BEER GUIDE FOR 1983 reached ninth place in the Best Sellers List for February. Order your copy from CAMRA Limited, 34 Alma Road, St. Albans, Herts. AL1 3BW. Cost £3.50 inc. p & p. Cheques payable to CAMRA Limited., please.

■ B & W BEER COMPANY CLOSES

The B & W Beer Company Limited went into liquidation at the end of February. The future of the company, which was a pioneer in the wholesale sector of the trade and is a sister company of the Sun Freehouse in Holborn, looks uncertain. The Union Brewery, which is also part of the B & W Beer Company, also has a doubtful future. In a press statement Roger Berman, the Company Chairman, said that increased competition and other bad luck, including substantial losses made at the London Beer Festival last year, had all added to the downfall of the company. Roger Berman also said that, although Plums 1 in Islington is also to close, his other pubs, the Sun and the Moon at Holborn, Plums 2 in E14 and Plums 3 (formerly the Seven Stars) at Blackheath, are unaffected by the B & W Beer Company going into liquidation and will continue to trade as normal.

■ SWEET NEWS FOR THE BITTER END.

The Bitter End real ale off license, which first opened its doors in December 1980, has moved up the road to 139 Masons Hill, Bromley. The shop which lists 70 different beers including Hook Norton, Theakstons and Samuel Smiths as well as Shepherd Neame and King and Barnes among its range realised that its original premises were undersized within six months of opening but has spent a year completing the legal and building work. The move has also lead to improved parking facilities – a problem at their previous address.

■ THE NEW WATNEY REVOLUTION

Let’s face it, Watney’s was the subject of CAMRA’s first witch-hunt. Do you remember the comment about their products in the first Good Beer Guide? It was “avoid like the plague”. The situation has now reversed itself, and in the majority of Watney’s houses you now stand a good chance of at least one Real Ale from their range. These are: London Bitter, Stag, Webster’s, Mann’s IPA and Ruddle’s County. Within the next year, according to the brewery, any Watney’s house so desiring will be able to have hand-pumped Real Ale, even if it necessitates installing a cellar. And they said we were backing a loser.....



BARGAIN BEERS

ALL DAY

The Packenham Arms, WC1; Dicks Bar, N8; Welch Bros., N2; the Sun* in Carlshilton; the Royal George in SE19; the Royal Albion in Hounslow; the Ranelagh, N11; the Crane, SW18; the Anchor & Hope, E5; the Cricketers in Enfield; the Duke of Cambridge in SW11; the Pint Pot in N1; the Prince of Wales, at Thornton Heath; the Gardeners Arms in Mitcham and the Nags Head in NW3.

EARLY EVENING

Ship & Shovel* in WC2 (Monday and Thurs); the Moon* in WC2; the Old Windmill in Hadley Highstone; the Salisbury in Barnet; the Wattenden Arms in Kenley, J.J. Moons in N19; the Malt & Hops* in N1; Marlers Bar in N19; Victoria in N6; the Red Lion, EC1; the Prince of Wales*, in SW8, the Princess Alexandra in W11; the Crown, Albert Embankment, SE1 and the Ship, Borrough High St. SE1.

OTHER EVENING

Leather Exchange Tavern* in SE1; Worcester Arms, W1 King's Head, SW19; the Golden Lion SW1, the King's Head, W3, the Norfolk Hotel* (Mon-Tue) in SW7; and the Imperial in WC2.

LUNCHTIME (part)

Bricklayer's Arms, EC2, Edinburgh, SE15; Ship & Shovel* in WC2; the Worcester Arms, W1; the King's Head W3, the Golden Lion, SW1, the Ebury Arms, SW1, J.J. Moons N19; Marlers Bar in N19; the Salisbury, Barnet; the Princess Alexandra in W11 and the Tramshed* in SE18.

SPECIALS

The Malt & Hops* in N1 (weekends and Tuesday), J.J. Moons in N19 (Fridays); the King's Head, W3 (Sunday evenings); the Crown* in NW8 (Fridays); the Norfolk Hotel* in SW7 (Sunday).

Because we are uncertain about the effect of recent price increases, we are making no claims for our consolidated list. We presume though that those pubs marked with an asterisk still offer exceptional value.

REAL ALE and REAL JAZZ

AT THE

Prince of Orange

118 LOWER ROAD

ROTHERHITHE

SE16

237 9181

LIVE JAZZ SEVEN NIGHTS A WEEK PLUS SUNDAY LUNCHTIME

RESIDENT REAL ALES: TRUMANS MILD, BITTER AND BEST BITTER.

3 MINUTES FROM SURREY DOCKS UNDERGROUND

BUSES 1, 47 and 188 PASS THE PUB

135 ASSOCIATION A.G.M.

on
Wednesday 27th April
at the
KINGS' ARMS, SW.18
8 p.m. for 8.30 p.m.

Honorary President
John Young hopes to be present

BUFFET
All CXXXV Tie holders welcome

■ MORE FULLERS PROGRESS

Recently we commented on the slow rate of conversion of Fullers pubs to real ale. Now, hot on the heel of last month's reports comes another; the Queen Victoria, 121 Bath Road, Hounslow recently had handpumps installed and is selling Chiswick Bitter, London Pride and ESB in real form.



At last, Londoners are to get a taste of one of Manchester's best-known beers. Newton & Ridley, the independent Weatherfield brewers are to make their Best Bitter available in the London free trade, on the unusual condition that it is sold at their Manchester pub prices. No list of outlets is yet to hand, but check out the well-known up-market outlets for BB at 52p a pint from 11 to noon on April 1. Further rumours abound that a bid has been made for a well-known Old Kent Road Truman house to be renamed the Drovers' Return...

■ BECKY'S RE-OPENS - AGAIN

The former Becky's Dive Bar in Southwark Street, SE1 which had a secondary and more salubrious existence as The Dive until closed last year when its lease was not renewed, has re-opened. Now named Barker's after its present licensee, the premises have been tastefully re-decorated, and if you are so minded you can sit in one of the original cells to enjoy your drink - this was once a prison! The beers available are Charrington, IPA and Bass, both handpumped and well kept, and snacks and meals may be ordered. Live music is also performed and further details will appear in the next issue.

■ AS YOU WERE, WAPPING

Samuel Smith, brewer of Tadcaster, Yorkshire, recently failed to obtain a licence for a proposed pub in a new development in Wapping High Street. The application was vigorously contested by Watneys, Trumans and East London LVA at three separate full day court hearings. Thames magistrates failed to reach a decision so the case was deferred to Stoke Newington where the licence was refused. Sam Smiths then appealed to Snaresbrook Crown Court where the full weight of the opposition helped to ensure that the earlier refusal was upheld.

The reasons given for opposition to the new licence included the fact that the area already contains 14 pubs, the nearest only 100 yards from the proposed development. With trade already depressed it was believed that there are enough pubs to cater for public demand. So it would appear that there is to be no increase in choice for the good people of Dockland.

■ TAKE HOME TRADE.

In the south-west corner of London, the Bottoms Up chain are offering real beer by the pint at their branches in Twickenham (York Street) and Teddington (The Causeway); possibly others too. Among the beers on offer appear to be Fullers London Pride and ESB as well as Marstons Pedigree which we understand sells at 54p a pint.

J.T. Davies Off Licence in Abbeville Road, SW4 is selling Felinfoel Double Dragon and Fullers London Pride at 59p a pint and Fullers ESB at 69p a pint. All beers are served on gravity. We also understand that J.T. Davies Twickenham branch in Hampton Road, near Twickenham Green, also sells Fullers London Pride and ESB on gravity. We should be interested to hear of other branches of this chain selling real beer.

■ SPRINGFIELD BITTER

Following last month's report that Bass-Charrington are marketing Springfield Bitter from Wolverhampton in London, we have now received a list of outlets for the beer from the brewery. Those within Greater London are listed below.

W1	Prince Regent, Marblebone High Street.
WC2	George, Strand.
EC1	Sir Christopher Hatton, 4 Leather
EC1	White Hart, 7 Giltspur Street.
EC3	Red Lion, 31/36 Houndsditch
EC4	Harrow, 22 Whitefriars Street.
E1	Black Horse, 168, Mile End Road.
E1	Lord Nelson, 230 Commercial Road.
E2	Golden Eagle, Finchley.
E4	Prince of Wales, 71 Hatch Lane.
E4	Royston Arms.
E5	Priory Tavern, 57 Elderfield Road
N1	Narrowboat, 119 St. Peters Street
N1	Stapleton Hall Tavern, 2 Crouch Hill
N7	Castle, 81 Holloway Road
NW1	Black Cap, 171 Camden High Street
NW3	Freemasons Arms, 32 Downshire Hill
SE1	George, 109/113 Long Lane
SE6	Rising Sun
SE8	Dreadnought, 251 Lower Road
SE14	Marques of Granby
SE14	Walpole
SW5	Hansom Cab, Earls Court Road
SW6	White Horse, 1 Parsons Green
SW15	Duke of Cambridge, Kingston Vale
Chadwell Heath	Greyhound
Chadwell Heath	Tollgate
Barking	Bull, 2 North Street
Hainault	Alfreds Head
Romford	William the Conqueror
Beckenham	Eden Park Hotel
Bromley	White Horse
St. Paul's Cray	Crayfish
Tolworth	Tolworth Recreation Centre
Kingsbury	Prince of Wales

Apologies for the shortage of address in some of these, but shortage of time precluded further research.

■ NOT ACTUALLY LONDON, BUT

we thought you may be interested. Following Watneys selling Ruddells Country Ale in selected pubs in London, another arm is following a similar path to obtaining a premium real bitter. Phoenix Brewery Co. (the southern arm, previously called Tamplins) are reported to be selling Gales, Best Bitter and HBS in a growing number of their outlets.

■ AS YOU WERE

Fullers have recently published an up-dated list of their outlets which includes the RAILWAY Roman Way, N7 (though not shown as having handpumps). However, they have now decided not to buy the pub as it is apparently not considered economically viable.

■ DISTRIBUTION CHANGES

Elsewhere in this issue we report the uncertainty about the future of Roger Berman's B and W Beer Distribution Company. Already we hear that another firm, Robert Porter and Co. (London) Ltd., has been appointed as London distributors for Ruddells and Wadsworths beers which were previously distributed by B and W.

■ ORANGE BEARS FRUIT

As reported last month, Grand Metropolitan's first home brew pub, the Orange, opened on 24th February in Pimlico Road, SW1. What was not known at the time is the brewer (or rather brewster) is a young lady, 23 years old Kim Taylor. It is her first job since completing a M.Sc. in brewing science at Birmingham University. The brewery which has a capacity of 180 gallons per brew can be viewed through a periscope in the bar.

We understand that the beer called SW1 is to be supplemented by a stronger brew to be named SW2, though we are not told whether this will involve expansion into a second brewery across the river in Brixton.

Incidentally, the company claim that Kim is the first "real" lady brewer. We suggest that they should take a trip to Netherton in the West Midlands where Dorothy Pardoe was brewing her wonderful beer at the Old Swan long before your new editors were born. If Kim's beers are anywhere near as good as Mrs. Pardoe's then she should be guaranteed a loyal following.

■ HERE WE GO AGAIN

Another passport scheme has been announced, this time by Friary Meux whose 322 pubs will participate in a scheme lasting until the end of May. But do not worry, you only have to visit 20 pre-selected pubs to receive either a special tie or Horseshoe Trail tee-shirt. Visit a further 50 pubs and you will receive a silk 70 Club tie and engraved pewter tankard.

■ ESSO PETROLEUM ON THE MOVE

The proposed move out of London by Esso Petroleum in Victoria Street, SW1 will mean the loss of their Tiger Club bar and the three handpumps currently in use. Sam Smiths OBB and Youngs Bitter are the permanent beers with Moorhouse's Premium and Pendle Witch as semi-permanent features (plus other guest beers). For many years the bar was tied to Watneys, the site being formerly their Stag Brewery which was opposite Westminster Cathedral until it was demolished in the late 1950's.

■ DICK EXPANDS HIS RANGE

Dirty Dick's, the well known Petticoat Lane tourist pub in Bishopsgate, EC2 has increased its range of beers to include Trumans Bitter; Draught Bass; Greene King IPA; and Ind Coope Burton Ale. This is probably due to owners Finches losing their nearby pub, the Magpie and Punchbowl to the redevelopers. The City Pride which was next door to the Magpie has also been demolished and two further pubs in EC2 are in danger; the Crispin, Finisbury Pavement and the Weavers Arms in Sun Street.

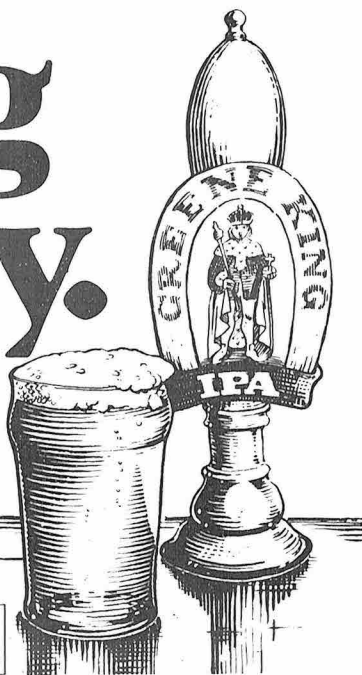
■ MORE PROGRESS FROM OUT OF TOWN

East London has more than its fair share of pub closures, so when one re-opens after being closed for 18 months it is something of a victory. When it also turns from a fizz pub to a real ale outlet selling Tolly Cobbold Bitter, original and Stock, it is something of a bonus. The pub in question is the Railway Tavern, or rather was as it has been renamed, the Artful Dodger and is in Victoria Dock Road, E16 on the corner of Freemasons Road.

■ ON THE BOX

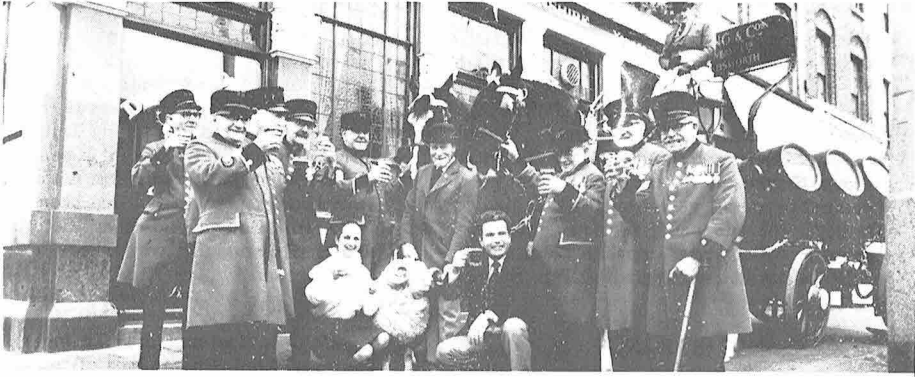
CAMRA is featured on Thames TV on Thursday April 7th. As part of the series "A Sense of the Past" made by Yorkshire TV, this programme is due to look at "a variety of old pubs and drinking places, and examines the great tradition of brewing, surprisingly threatened in the sixties and seventies, but now revived by the campaign for a decent pint." (Quoted from the TV handout). Should be worth going home for before chuck-out time; it will be broadcast at 11 p.m.

Living history.



Greene King IPA bitter.
Makes opening time worth waiting for.

THE DUKE REFURBISHED



There were colourful visitors to the Duke of Devonshire, a Young's house in Balham High Road, when the pub celebrated the completion of an extensive refurbishment programme.

Eight Chelsea Pensioners, resplendent in their scarlet uniforms, got proceedings off to a bright start as the first customers to have a drink in the carefully restored bars. They had been invited by the pub's managers, Chris and Sally Marley, who served free drinks and food during the lunchtime session on March 2nd.

The Duke of Devonshire – a 19th century coaching house on the former London to Brighton main road and featured in part 1 of "Stane Street Stagger" – has been renovated at a cost of £140,000 by Youngs. Its enormous etched mirrors, moulded ceilings and Victorian woodwork have been returned to their former glory and the whole pub has been recarpeted, refurnished and redecorated.

This former Good Beer Guide entry serves Young's beers and a wide selection of hot and cold food.

MALT AND HOPS

CALEDONIAN ROAD, KINGS CROSS N1 CHEAPEST PUB IN LONDON

Ten Traditional Ales always on tap from a selection of sixty

WADSWORTH'S, GIBBS, SHEPHERD NEAME, CHUDLEYS

MARSTONS, GODSONS, TOLLY COBBOLD, ARKELLS

EVERARDS, CAMERONS, GREENE KING, GREENALLS, ETC.,

HAPPY HOUR

11.00 a.m. – Midday

5.30 p.m. – 7.30 p.m.

All Prices reduced by 20%

EVERY TUESDAY

GUEST BEERS 55p PINT

BEST COCKTAILS IN TOWN

From a selection of 40

English Country Wines

Apple, Gooseberry,

Redcurrant, Damson etc.,

ALL DAY SATURDAY

ALL DAY SUNDAY

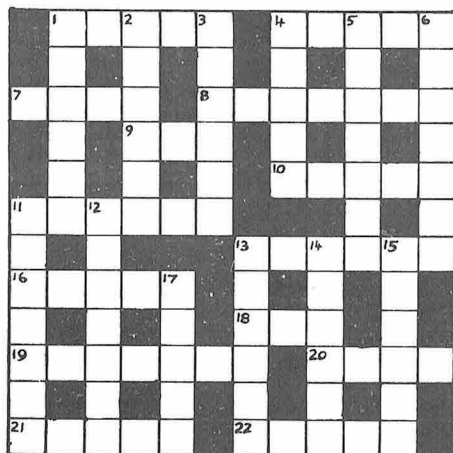
11.00 – 3.00 5.30 – 11.00

12.00 – 2.00 7.00 – 10.30

ALL BEERS 20% OFF

DRINKER CROSSWORD

Compiled by DAVE QUINTON



£5 PRIZE TO BE WON

All entries to be submitted to:
London Drinker Crossword
25 Valens House
Upper Tulse Hill
London SW 2.

All correct entries received by first
post on 25th April will be entered
into a draw for the prize.
Prize winner will be announced in the
June London Drinker.
Solution next month.

Name.....

Address.....

.....

.....

ACROSS

1. Drinking is a pleasure after these. (5)
4. Down where Australians live. (5)
7. River exists twice. (4)
8. Brewery found by Rugby Union vicar coming before the French. (7)
9. Take advantage of half a blouse. (3)
10. When American soldier gets free round, result is stiff. (5)
11. Emblem affixed to beer mug. (6)
13. Throw the French a fortified house. (6)
16. Not the ale for the real drinker. (5)
18. Not in when the holy man runs out of stout. (3)
19. Loiters around for hard workers. (7)
20. Pulls guts out. (4)
21. Correct when filtered beer loses head. (5)
22. Doctors example may lead to waste. (5)

DOWN

1. Pub without railway has youth associations. (6)
2. The kind of heroes you get in a pub with no music licence. (6)
3. A cinema has a silver one. (6)
4. Milk dispenser. (5)
5. Please greatly when you take away beer. (7)
6. Left over when you live round fashionable type? (7)
11. Compliment on beer with less gas. (7)
12. Gaz on the main line? Incredible! (7)
13. Pubs are this out of hours. (6)
14. You ought to let beer do this. (6)
15. You may have a few of these when you're merry. (7)
17. Not bitter but not mild either. (5)

The End of the Process

the good, the bad, and the dirty

"Don't get bogged down on this one" suggested your solemn new Editor. Now no-one would suggest that there is a toilet in everyone bursting (to get out) but sooner or later the DRINKER has to face it and risk the Scatological.

Pubs are legally required to provide lavatories for their customers, male and female. They are also supposed to provide hot and cold running water for hand washing and the provision and quality of these facilities are overseen variously by the licensing justices, the local planning authority and the local environmental health authority (in London, the latter two being the London Borough Councils) so what goes wrong?

Clearly something is wrong because in a considerable number of London pubs the standards are abysmal. Every one of us has a horror story to tell and generally women the worst. There is plumbing which seems to rise and fall with the state of the tide (though the Thames Barrier may afford some improvement?) so that urinals become evil-smelling paddling pools. There are water closets that appear to have flushed last in 1949, or at best take half an hour to summon up a head of water. There are roller towels that appear to be Nelson's used bandaged from Trafalgar and toilet paper.....no, sorry sir, we're right out.

No London pub I know matches the unselfconscious primitivism of one shropshire hostelry. The Gents was a roofless stockade irregularly attached to an end wall. A rather soggy gravel floor gave onto a length of roof guttering placed in a crudely excavated trench of uncertain stability. Architectural curiosity (there's nothing like this in Pevsner) drew me to explore the far side of the stockade. The guttering extended out from the stockade, and via a couple of uncertain joints, to eject its contents down the bank of the adjacent River Severn. I think the erosion suffered by the bank must by now have undermined this odoriferous edifice and added navigation to its hazards.

Some readers may recall the former London Regional Champion in this field, the infamous Becky's Dive Bar at London Bridge, one of the rare real beer free houses of the dark days a decade ago. The Gents were an annex to subterranean outbuildings of the one-time Marshalsea Prison, and retained a little of

the decor. The whole bar never escaped from a time-warp around 1943, the cleaning service being in a different part of the space-time continuum, and was overwhelmed by the beginnings of the real ale boom. Users of the gents had to accomplish feats of agility worthy of at least a semi-inebriated chamois over the empty casks stored in the urinal. The confidence implicit in the hygienic cask-washing plant of Messrs. Ruddell, Thwaites and Shepherd Neame must have been of great reassurance to the management of those companies. It is reliably reported that the Ladies was worse . . . something about ladders, damp walls, dark corners and spiders...

That one is a few years gone, but it was long in its throes. Pub customers are unlikely complainants to authority in the public health field: if they like the pub they will not complain; if they do not they just cease to use it. Environmental Health Officers inspect pubs along with other public premises at intervals, but there are no legally set intervals and the frequency is at the discretion of the Borough Council and Maggie's cuts; whilst those pubs that serve meals will be inspected more frequently (generally at least annually) other pubs will not be checked for years. Objections can also be made at the annual brewster sessions of the licensing justices when a pub is relicensed, but that is unlikely to produce any objections that would not be dealt with quicker by Environmental Health Inspectors. The squalor that often attends pub toilets might not in fact be revealed by regular inspection, for it is the quantity of them that is often the source of the trouble. A popular pub can often ludicrously exceed the capacity of all its facilities, but is under no obligation other than market forces to enlarge them. There are no legal or British Standards for provision, beyond a provision. There are clear legal standards for provision for staff, but not for customers.

So everything depends on market forces and the public's right to complain. Are we too tolerant? Many publicans claim that the public are the makers of squalor by their own bad habits and certainly pilfering of moveable items can be rife in bedsitter districts. One licensee claimed he kept half of a neighbouring block of flats supplied with soap, so fast did it disappear!

Mostyn Lewis.

Real Beer in London

As you no doubt know a supplement to Real Beer in London will shortly be issued to bring it up to date, reflecting the continued increase in availability of real beer since its publication. However, thoughts still keep turning to the next edition, if there is to be one and we recently received the following note from East London and City Branch which we are publishing in order to gauge public opinion.

"Many people have been asking whether there will be a further Real Beer in London. The increase in real beer pubs since the last edition (1981) with many more Watney and Truman pubs would mean an increase in size and therefore the cost. This would push the price to around £4 compared to £1.95 in 1981. Some drinkers think that at this price it would be unsaleable.

"There are ways around the increases in price.

1. Reduce the entries to postal districts only, thus eliminating entries, for example in Essex (Upminster, whilst being in Greater London, has an Essex address), Hertfordshire, Surrey, Middlesex and Kent.

2. Compile a London Good Beer Guide but also listing all outlets but with only the basic description. (e.g. Pig and Spotted Lettuce Leaf, 2 Pig Street, E19. Hoares: Bitter (H).)

"What do London Drinkers think?"

As it is you, the London drinkers, on whom we rely for sales of RBIL we are very interested in what you think. Please write to us and give us your views on what format the next edition should take, or whether there should even be another edition.

RBIL UPDATE

At present there are approximately 240 new real beer outlets of which we have been notified but which space has not allowed us to print. For this reason we do not propose to publish any more updates to Real Beer in London until after the publication of the supplement referred to above.

What's in a Name?

We thought it might be interesting to run a series of articles on the explanations for pub names: Here is one to start with.

FISH & RING – In the last seven years 33 pubs have been sold off by Charrington, usually to the advantage of real beer lovers. One of the latest is the Fish & Ring, 141a White Horse Road, Stepney E1. On sale are Charles Wells Bombardier, Fullers London Pride and Youngers IPA. The Fish & Ring is the only pub so named in London. The name could derive from St. Mungo (St. Kentigern) Patron Saint of Glasgow who came to the aid of Queen Langoureth. Her husband King Cadzow suspected her of dallying with a certain knight. Whilst the knight was asleep he stole the ring he had given her and threw it into the River Clyde. The Queen asked St. Mungo for help and he sent a man down to the river with orders to bring back the first fish he caught. This he did and in the salmon's mouth was the ring. Rather like Dallas isn't it? The building dates back to 1866 at least when the licensee was William Parnell. But why a pub with Scottish links in Stepney? Any answers, suggestions of other unusual names, and better still similar information, please, to the Editors.

ANDES COACHES

12 seater mini-coaches
competitive rates and
friendly service

*Highly recommended
by local branch*

01-274 1765

Arch 416, Gordon Grove, SE5.

3rd SANDOWN PARK BEER FESTIVAL

THE GRANDSTAND
SANDOWN PARK, ESHER

FRIDAY 8th & SATURDAY 9th APRIL
11am - 2.30pm, 5.30 - 11pm

SUNDAY 10th APRIL 12noon - 3pm

ADMISSION:

75p Lunchtimes; £1 Evenings
Including Souvenir Glass

7th FARNHAM BEER FESTIVAL

THE MALTINGS
BRIDGE SQUARE, FARNHAM

THU. 28th APRIL 6 - 11 pm

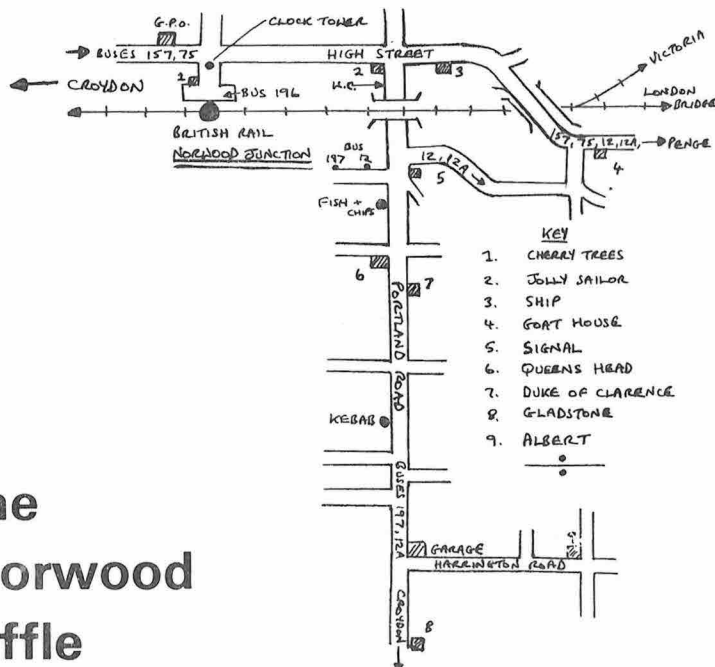
FRI. 29th APRIL 6 - 11 pm

SAT. 30th APRIL 11am - 3pm, 6 - 11 pm

TICKETS £1.75 PER SESSION
INCLUDING SOUVENIR GLASS

From Alan Davies, 68 Bishops Wood,
St. Johns, WOKING, Surrey.

Please enclose SAE and state numbers and
session. Cheques to be made payable to:
Surrey/Hampshire Borders CAMRA.



The
South Norwood
Shuffle

The crawl begins at Norwood Junction Station, which is reached from Charing X, Waterloo East, London Bridge and Victoria. When you leave the station by the main entrance, look across the forecourt to your left and you'll see the Cherry Trees, your first stop. This pleasant and comfortable Truman's pub serves Best and Ordinary Bitter. If you visit this pub early and the weather is good, you will find that it boasts an excellent little garden provided that someone has moved the piano.

Go up to the superb Edwardian clock tower, and along the High Street (to you right) as far as the Jolly Sailor, a magnificent old pub that was once on the banks of the Croydon canal and which provided the original name for the station when the railway was laid along the drained cut. However, don't go inside unless you're into disco pubs rather undistinguished Charrington's IPA.

One hundred yards further on you will find salvation in the form of The Ship, the first free house in the area. Here you can sample the varied delights of Adnam's Arkells, Hall & Woodhouse Badger, Sam Smith's OBB, Young's Speical, Devenish, Bulmer's cider and my personal favourite, the inimitable Green King Abbot. The pub also serves good food at lunchtimes and snacks in the evening. Tony, the new landlord is a keen CAMRA supporter and deserves our custom. If you continue along the same road you will reach one of the best pubs in Norwood, the curiously-named "Goat House" was once a rather boring Charrington fizz house. However, this large roadhouse was handed over to Fuller's as the result of pressure (sorry) gained from an enlightened Monopolies Commission a few years ago, thus bringing the delights of this company's superb products to SE25 for the first time. I have always found the beer to be in excellent condition, thanks to a combination of good management and a well kept cellar. You can also hear live music here on Wednesdays and Sundays, without destroying your eardrums. A must for every visitor – buy your London Drinker here too.

Head back past The Ship, and turn left at the lights. Pass under the bridge, and you will come to The Signal, a fairly basic but friendly Ind Coope pub serving Burton on handpump. It's also opposite the best fish and chip shop in the vicinity.

You can also obtain a good pint of Burton, as well as Taylor Walker Mainline, at the Queen's Head further down Portland Road, or pop across the road to the Duke of Clarence

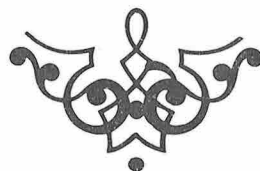
for a pint of Courage Director's if you fancy a change of brewery.

One more Portland Road hostelry deserves a mention: the Gladstone, a Charrington house that, according to reliable sources is the only pub in the area that has never hung up its handpumps.

If you have a train to catch, however, forget all the pubs in the Portland Road and head straight for The Albert after the Goat House. Like the latter, this is a GBG pub, and can be found by turning into Harrington Road by a large service station and walking up to the crossroads. For years this has been a popular watering hole for local CAMRA members but, in spite of that, it's still an excellent pub. It's also much used by local clubs and groups and is the base of the Northwood Morris Groups who give occasional performances (sometimes impromptu) outside. The pub has recently been featured on TV, but the Morris deny having anything to do with that and blame it all on Tony Hooker's haircut. The Albert is a modern pub but it is still very much of a local, with a wide cross-section of the surrounding population in evidence. Fans of cricket can converse with the pubs team, the Albert Taverners, most of whom can be found at long stop at one end of the bar. Both the Courage Best and Director's are delicious, thanks to the hard work of Don and Binnie, and I say that as one who is not normally a frequenter of this brewery's house. The service is extremely good, as is the food at lunchtime.

Finally, on your contented way back to the station, you might care to avail yourself of the amazing variety of eating places along Portland Road. Worth trying are the Gizel Doner Kebab, halfway between the Albert and the Duke of Clarence and the Sitar Tandoori, just before the bridge, close to the previously-mentioned chippery. South Norwood, you see, is not merely a busy railway station or a map reader's nightmare, but a friendly, long-established suburb of Croydon that has so far managed to avoid the vandalism inflicted on that latter town by the planners. Enjoy your visit.

Dick Abercrombie
Croydon & Sutton Branch.



ALAN GREENWOOD'S BEER AGENCY

PUB TAKE-AWAY

ENJOY A REALLY
TRADITIONAL HOME-PINT
"JUGS & HOMESIZE CASKS OF
BEER" Fresher, tastier and up to
20p a pint cheaper than cans



OPEN MON-SAT 10.30-1.30 5.45-9.30 SUN 12-2.00 7-9.00
* OPEN MON-SAT 10.30 to 9.30



* OVAL SE11
228 Kennington Park Rd.
01-735 3036

OLYMPIA W 14
17 North End Road
01-603 4978

* LEWISHAM SE13
252 Lewisham High Street
01-852 8360

WIMBLEDON SW19
308 Haydons Road
01-542 3725

HAMPSTEAD N.W.3
150 Haverstock Hill
01-586 8382

TOLWORTH SURREY
120 The Broadway
01-390 3446

WALLINGTON SURREY
8 Butter Hill
01.669 5158

CLAPHAM SW4.
215 Clapham Park Road
01-720 6999

Real Ales (60 Varieties)

Home & Office Delivery Service 01-390 3446
ALSO FULL PARTY RANGE OF WINES, SPIRITS, MINERALS ETC.

PLAN NOW FOR MAY
MAYDAY FESTIVALS, STREET PARTIES, BAR-B-Q'S
MAY SPORTS

MIDDLESEX 7's CUP FINALS
END OF SEASON PARTIES

■ LICENSING HOURS

According to last month's What's Brewing, anyone can make an application for a change in the opening hours in the area where they live. However, opposition to an application can be tough, as Enfield and Barnet Branch discovered when their application was turned down. The argument was that it was unfair for their locals to close at 10.30 p.m. when about a mile away closing time is 11 p.m. Mr. A.C. Davies, Chairman of the National United Temperance Council, made a speech against the proposal, and a number of local licensees also lodged objections. While the Temperance lobby may feel justified in trying to interfere with the pleasure of others (do we seek to force them to DRINK?), what logic is there behind the licensed trade wishing to refuse the right to open later if they (and their clients) so please? Isn't that rather akin to biting the hand that feeds it?

Meanwhile, a bonus for the punters of Richmond occurred on Thursday 3rd February when the licensing magistrates of that august borough granted a plea from the local LVA to bring opening hours into line with those in neighbouring Wandsworth and Central London generally. Opening hours from Monday to Saturday are now 11 a.m. to 3 p.m. and 5.30

p.m. to 11 p.m. – an increase of 30 minutes in the evening and half an hour later at lunchtime. The area affected is the whole of the borough of Richmond, including Barnes, Mortlake, the Hamptons, Teddington and Twickenham.

Unfortunately, local licensees did not seem to be aware of the change as notification was rather slow reaching them from the court and most broke the law unwittingly by continuing to open at 10.30 a.m. for a number of days. Ray Francis of the Windmill, Hampton Hill only found out the facts by telephoning the local police station after being asked how he liked the new hours by a local CAMRA member; that was on Sunday 6th February!

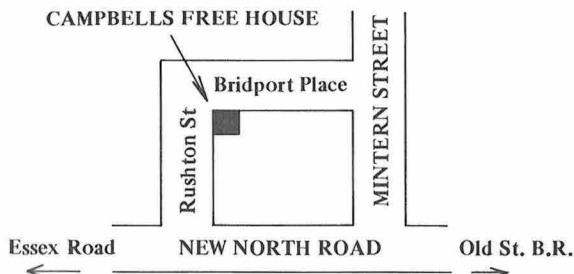
■ A MAJOR SUCCESS – MAYBE

East London and City Branch of CAMRA, whose proportions of pubs selling real beer is the lowest in London at 36 per cent, tell us that they now have a postal district where all the pubs sell real ale; the district is South Woodford (E18). However, we understand that no major celebrations are being planned as the district only contains four pubs.

Incidentally, S.W. Branch has just notched up its first 100% district, SW20, with 3 pubs and a Real Ale Off License.

CAMPBELLS FREE HOUSE

21 BRIDPORT PLACE, ISLINGTON, N1



SAM SMITHS
CHUDLEY LOCAL LINE
McMULLEN AK MILD
and
PITFIELD

HOXTON HEAVY

All beers at 50p a pint
between 5.30 – 7.30 p.m.

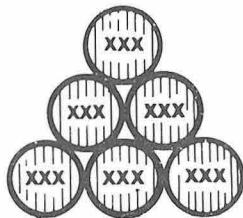
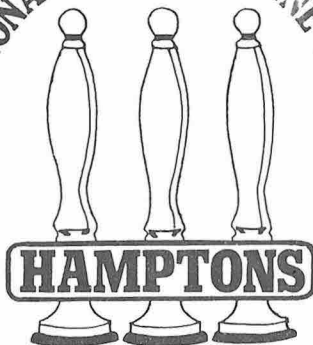
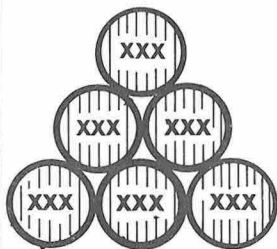
Lunchtime Pub Grub
Easy evening parking

Buses 141, 271, 76
pass close by

5 mins walk from
Old Street and Essex Road
Stations

HAMPTONS

TRADITIONAL ALE AND WINE TAVERN



385, ARCHWAY ROAD, HIGHGATE, LONDON N6
(Opposite Highgate Tube)

Eight traditional ales always on tap from a selection of sixty from:
GODSONS, WADSWORTHS, GREENE KING, GIBBS, GREENALL,
EVERARDS, TOLLY COBBOLD, ARKELLS, MARSTONS ETC

HAPPY HOUR

11.00 a.m. – Midday
5.30 – 7.30 p.m.

All prices reduced by 20%

EVERY MONDAY

& WEDNESDAY

GUEST BEERS 50p PINT

Pub Profile: The King's Head, S.E.27.



A century ago the pub was the centre of social life for its locality. It was not only a place of refreshment, but also one of meeting and popular entertainment. Time has done little to change that at the King's Head, West Norwood, and the recent re-introduction of four handpumps serving Bass has made this a welcome return to the Real Ale scene.

When I first knew this spacious late-Victorian house nine years ago, no less than eleven handpumps were hard at work. Indeed, the King's Head appeared in the 1975 'Good Beer Guide', and locals still have a good laugh about its comment. The inspectors had chosen an unfortunate day to call (during re-decoration) and what appeared was "a most unattractive pub with an Irish flavour". Architecturally, I'd disagree with the description, and the atmosphere is all you could want of a good pub. This is indeed the centre of the local Irish community, which has its routes in the workers who re-built the Crystal Palace on its site nearby in the early 1850's. To all-comers 'Cead Mile Failte' – a hundred thousand welcomes – is the order of the day, both from the regulars and from mine genial hosts, Jim and Eileen Holland, who recently celebrated 20 years here as the tenants. Their motto, incidentally, is "quality, civility and service", and the friendly staff stick to it enthusiastically,

During the years between the withdrawal of the handpumps in the spring of 1975 and the arrival of their successors last autumn, I often regretted that CAMRA could not recognize this pub. I don't think I have

ever had a bad pint of Bass there, even during its brief sojourn under top-pressure I am also assured that Jim serves an excellent pint of "Draught" Guinness and various other tipples, by those who know.

There has been a building on this site for many years, and the previous building – see illustration – had a cobbled forecourt, with horse troughs (which survived until recent years), and pleasure gardens around the back. The Tivoli Gardens, whose name is commemorated by a road nearby), had a monkey-house, a maze, quoits, skittles and a cricket ground – covered now by the bus garage. The hall behind is still in use for live music, pool, electronic games and cage bird shows and youngsters are welcome. This was a music hall in the original sense – long before the establishment of separate buildings for the purpose, which evolved from the sing-songs in pub back rooms. This hall was the venue for band concerts, meetings, impromptu knees-ups, and also pay-day for local workers.

A number of tasty snacks are on sale. Darts are played in the Public Bar (watch your nose when emerging from the Gents!) and also in a meeting room upstairs. An excellent shellfish stall parks outside on Friday evenings and throughout the weekend.

The district was once densely populated with pubs. A brewery stood nearby and you can sample as many as 21 different Real Ales within a mile – the majority within 100 yards. Space permitting, this is to be the subject of a crawl in the next issue, which should prove both interesting and enjoyable.

Martin Smith.



ROBERT PORTER & CO. (LONDON) LIMITED

Waterden Road
London E15 2EE

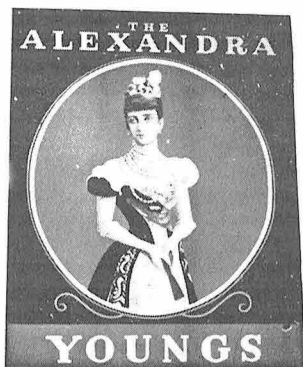
Are pleased and proud to announce that they supply the following cask conditioned beers to the Free Trade in the Greater London Area.

Gibbs Bishops Tipple
Gibbs Wiltshire Bitter
Gibbs Premium Bitter

Ruddles County, Ruddles Bitter, Wadworth 6X, Wadworth Old Timer, Marstons Pedigree, Felinfoel Double Dragon, Felinfoel Bitter, Devenish Wessex Bitter, Devenish Bitter.

Please telephone **01 986 7311** and ask for Roger Tordoff, Sales Manager for personal service.

SAVING....



It's not every landlord who moves into a pub and before having time to unpack, discovers a plan to divert a bus route through the place. That is what happened to Alex Wilson who took over GBG entry, the Alexandra in Wimbledon, last October

Within a week of his arrival a member of SW London branch called with the month's

delivery of London Drinker. During the conversation he casually enquired about the plans for the pub's demolition! Further investigation showed that a town centre re-development plan threatened the pub. Youngs whose pub it is, launched a 'Save the Alexandra' campaign and have been supported by SW London branch.

Branch members and regulars distributed leaflets in Wimbledon. These outline the plans and have a section for individuals to register their protests. A reply-paid section enables the forms to be returned to the pub for presentation to the Council in the near future.

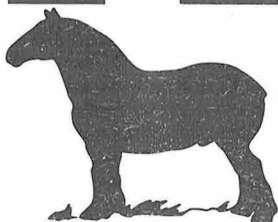
These leaflets form the first part of the 'Save the Alexandra' campaign. So far the response has been outstanding, with over one thousand of the printed ten thousand having been returned — they had expected about a third of this total!

Further indication of public reaction was seen at a 'consultative' meeting called by the Council. Public reaction was firmly against the plans.

However, it is early days yet, CAMRA and Youngs will not be giving up easily, so watch this space.



**GODSON'S
BREW
BEST
BRITISH
BITTER
BEER
BETTER**



**...AND YOU'LL NEVER BUY
A BETTER BOTTLED BITTER IN YOUR LIFE**

■ WELLS ADVANCE

Last month we reported on the second London tied pub for Charles Wells of Bedford; now hot on its heels comes a third. It is the Knights of St. John, Queens Terrace, NW8 which was taken over on 1st March upon the expiry of the previous lease held by Charringtons. We have not yet heard that it is definitely selling real beer but in view of the brewery's policy it would be very surprising if it doesn't.

■ DON'T YOU FEEL SORRY FOR THEM?

Many lagers are being sold at 'totally unrealistic prices' according to a report from stockbrokers Buckmaster and Moore, the brewery analysts. That's what we had always thought, but in this case they meant unrealistically LOW. Of course, they were referring to prices in supermarkets where competition for market share is so high that profits seem to be ignored.

Between 1971 and 1982 larger consumption rose by 220 per cent compared with 1.4 per cent for beer to raise its share of the total beer market from 9.9 per cent to 31.3 per cent.

According to the Morning Advertiser, unless there is an unexpected upturn in the market or a more realistic pricing policy by some companies, the price war seems set to continue to the detriment of the larger market as a whole.

Of course, those of us who use pubs know where some of the profits will be recouped from, don't we?

■ SMALL BREWERY CHANGES

Changes are afoot at Tisbury Brewery of Tilbury in Wiltshire, whose association with London's Godsons Brewery has been the subject of speculation for some months, with Godsons' GBH being brewed by Tisbury. The latest news received is that a company called Montague Street Finance Co. (Kettering) have bought 26.5 per cent of Tisbury's capital from so far unidentified sources. The principals of Montague Street, Alan Kiley and Christopher Tucker, who will join the board of Tisbury already have involvements with three small breweries in Sussex - Martlett of Eastbourne; Sussex Brewery Co. of Brighton and Ballards of Pulborough.

Kiley and Tucker are also involved with pubs in London through their company, Central London Free Houses, which owns the Princess Louise, Holborn; the Ship, Borough Market, SE1 and the Crown, St. John's Wood and

have recently acquired the Comedy off Leicester Square which is currently being renovated.

Could this be the route for small breweries to obtain finance and gain a voice in the beerage?

Flowers Original is now as widespread as Tusker in London. I have recently received a list of 130 managed cask beer outlets in London controlled from Luton which shows 29 with Flowers, 32 with Tusker, and a further 17 with both. Generally the tenanted outlets seem to follow the established pattern of Wethered's Bitter only, though I have no figures to confirm this.

New 'Free Houses' will include the Anchor, Lewisham, the Fremains pub (Jolly Farmers, Lewisham) also sells "Traditional Mild" (Wethered's) but at 66p it is more a novelty than a bargain!

Mostyn Lewis.

■ WHERE EAST END MEETS ORIENT

Workers at Anchor House, Charrington's office block which used to be a brewery, now have the opportunity to sample an unusual combination in one of their employer's pubs across the road. The Hayfield, Mile End Road, E1 has re-opened its restaurant and is concentrating on Chinese cuisine (both Peking and Cantonese).

Could it be that they will consider selling beer produced by their rivals, Scottish and Newcastle Breweries? (Waiter, a portion of 38 and a pint of No.3 please.)

MEANWHILE, NEARBY

Five doors away from the Hayfield at 168 Mile End Road the Black Horse has had handpumps installed and is selling Charringtons IPA and Springfield bitter, the Wolverhampton brew recently introduced to the Metropolis. Of interest is the price of this new beer - 62p a pint. (Note: this is written before the budget. Sorry to remind you.)

■ WINTER BREW TO STAY

Victoria Brewery, run by four CAMRA members in Ware, Hertfordshire, whose beer is available in a number of London free houses, tell us that they are extending the brewing period of their strong ale, "Hellfire". The 1063 gravity beer was originally scheduled to be a one-off brew for Christmas but due to popular demand its production is continuing throughout the winter months and, should demand continue, throughout the year.

SHOESTRING WINES

A criticism often levelled against real ale off-licenses is that many advertise large selections available, which often turns out to mean only a couple at a time. Here is a chain which guarantees to have a good range at competitive prices, and that can't be bad.

Shoestring Wines have three shops, in West Norwood, Raynes Park, and Purley – the latter under the name of Traders. The company was set up by 3 partners, Dennis Street, Chantal de Ruyter and Mike Beer, who had worked for large companies and wanted to go freelance. They had a shop in Raynes Park, decided to start a real ale off-license, investigated the possibilities and went into business. Their original shop was recently re-opened after a complete internal rebuild, with nine handpumps. The range at present includes Oak Brewery XL and Old Oak at 43p & 51p, Youngs Special and Bitter at 61p & 51p, Wadsworth 6X at 58p, Pendle Witches' Brew and 2 guest beers (this is company policy) – at the time of writing these were Bishop's Tipple at 79p and Felinfoel at 60p. Also available are two draught ciders at 50p per pint, country wines, sweets and fresh ground coffee.

The West Norwood branch was started by Brian Pattison, a builder by trade, who refurbished his own premises shortly before doing the work at Raynes Park. His range at West Norwood is: Oak XL and Old Oak at 42p and 52p per pint), Pendle Witches (62p), Moorhouse Premium (51p), and at the time of writing, Arkells BBB (59p) and Kingsdown Ale (69p). The two latter about to be replaced by Marston's Pedigree at 59p and Wadsworths 6X at 58p. There are also 6 ciders and a choice of country wines.

I personally can vouch for the quality of the beer at this shop. If there is any doubt, Brian simply won't serve it. He recently told me: "If a customer comes back and says it wasn't too good, I'll give them a fresh lot without question."

The third member of the chain, Trader's of Station Approach, Purley, currently has four handpumps and a choice of three or four beers, increasing in line with its counterparts.

Their addresses are:

Shoestring Wines, 335 Kingston Road, Wimbledon Chase, SW20. Tel: 540 2911 and Shoestring Wines, 8 West Norwood High Street, SE27 (just below the station), Tel: 670 3448.

MERTON (name supplied on request.)

YE OLDE BRIDGE HOUSE

THE BRIDGE BREWERY'S OWN PUB

Bermondsey Bitter, Special Bitter and 007 (OG 1055) available on tap

Polypins are available for collection 6 days a week.

Now open – The Tower Bar, situated on the 1st floor with a view of the Thames, ideal for parties, meetings.

For details, please ring Mr. A. Driscoll, Bar Manager, on 01-403 2276.

*We welcome brewery visits – please phone for appointment.

THE BRIDGE BREWERY

London's newest real ale brewers
218 Tower Bridge Road, London SE1 2UP.
Telephone: 01-403 2276

Where to buy London Drinker

OUTLETS —East and South East.

Pubs

EC1 LORD NELSON, 262 Old Street.
 EC1 SEKFORDE ARMS, Sekforde Street.
 EC1 STICK & WEASEL, 273 City Road.
 EC2 BRICKLAYERS ARMS, 63 Charlotte Road.
 EC2 WINDMILL, 27 Tabernacle Street.
 EC3 LAMB TAVERN, 101 Leadenhall Market.
 EC4 GEORGE, 25 Old Bailey.
 EC4 LUDGATE CELLARS, Apothecary Lane.
 EC4 OLD BELL, 95 Fleet Street.
 EC4 POPINJAY, Fleet Street.
 EC4 WILLIAMSON'S TAVERN, 1 Groveland Ct.
 E1 FISH & RING, 141a White Horse Road.
 E1 LORD NELSON, 230 Commercial Road.
 E1 MACKWORTH ARMS, 158 Commercial Rd.
 E2 HOP PICKER, 483 Hackney Road.
 E2 MARKSMAN, Hackney Road.
 E2 ROYAL STANDARD, 165, Kingsland Rd.
 E8 ROSE & CROWN, Mare Street.
 E11 NORTHCOTE, 110 Grove Green Rd.
 E13 RED HOUSE, 299 Barking Road.
 E15 CHOBHAM ARMS, Chobham Road.
 E17 BELL, Forest Road.
 E17 ESSEX ARMS, Forest Road.
 E17 FLOWER POT, 128 Wood Street.
 ONGAR KINGS HEAD, High Street.
 SE1 GLOBE, 8 Bedale Street.
 SE1 HORSESHOE, Melior Street.
 SE1 LEATHER EXCHANGE, Leather Market St.
 SE1 MUDLARK, Montague Close.
 SE1 MARKET PORTER, Borough Market.
 SE1 PINEAPPLE, 53 Hercules Road.
 SE1 VICTORY BAR, Waterloo Station.
 SE1 WELLINGTON TAVERN, Waterloo Rd.
 SE4 WICKHAM ARMS, Upper Brockley Rd.
 SE10 NORTH POLE, 131 Greenwich High Rd.
 SE10 ROYAL GEORGE, Bissett Street.
 SE13 DUKE OF CAMBRIDGE, High Street.
 SE15 OLD NUN'S HEAD, Nunhead Lane.
 SE16 BLACKSMITHS ARMS, 257 Rotherhithe St.
 SE16 PRINCE OF ORANGE, 118 Lower Road.
 SE18 ANGLESEA ARMS, 91 Woolwich New Rd.
 SE18 QUEEN VICTORIA, 118 Wellington Street.
 SE18 MELBOURNE ARMS, Sandy Hill Road.
 SE18 GATEHOUSE, Leda Road.
 SE18 VILLAGE BLACKSMITH, Hillreach.
 SE19 ROYAL ALBERT, Westow Hill.
 SE20 LONDON TAVERN, Maple Road.
 SE20 GOLDEN LION, Maple Road.
 SE27 S.LONDON THEATRE, 1a Norwood Rd.
 BEXLEY BLUE ANCHOR, Bridgen Road.
 CROYDON BIRD IN HAND, Sydenham Rd.
 CROYDON CATHERINE WHEEL, High St.
 CROYDON HORSE & GROOM, Cherry Orchard Rd.
 CROYDON LION, Pawsons Road.
 CROYDON ROYAL STANDARD, Sheldon St.
 CROYDON SHIP, 47 High Street.
 KENLEY WATTENDEN ARMS, Old Lodge Lane
 ONGAR KINGS HEAD, High Street.

OFF TRADE

E4 Waltham Wines, 72 Sewardstone Road.
 E17 Bootlegger, Hoe Street.
 E17 Old Cellas, Pretoria Street.
 SE3 Bitter Experience, 128, Lee Road.
 SE11 Alan Greenwood's, 226 Kennington Park Rd.
 SE13 Alan Greenwood's, 252, Lewisham High St.
 SE23 Brewer's, 97 Dartmouth Park Road.
 SE27 Shoestring Wines, 8 Norwood High Street.
 BEXLEY HEATH Bitter Experience, 216 Broadway
 BROMLEY Bitter End, 139 Masons Hill.

NEW OUTLETS

SW1 ADAM AND EVE, Petty France.
 EDGWARE RAILWAY HOTEL, Station Rd.
 EDGWARE WHITE LION, High Street.

OUTLETS—SOUTH-WEST/WEST

Pubs

SW1 BUCKINGHAM ARMS, Petty France.
 SW1 FOX & HOUNDS, Passmore Street.
 SW1 RED LION, 48 Parliament Street.
 SW1 ROYAL COURT TAVERN, 8 Sloane Sq.
 SW1 SPREAD EAGLE, Grosvenor Road.
 SW1 WILTON ARMS, 71 Kinnerton Street.
 SW4 JOLLY GARDENERS, 115 St. Alphonsus Rd.
 SW5 CLARENCE, 148 Old Brompton Road.
 SW6 WHEATSHEAF, 562 King's Road.
 SW6 WHITE HORSE, 1 Parson's Green.
 SW7 ANGLESEA ARMS, 15 Selwood Terrace.
 SW7 NORFOLK TAVERN, Harrington Road.
 SW8 PRINCE OF WALES, 99 Union Rd.
 SW12 DUKE OF DEVONSHIRE, Balham High Rd.
 SW12 GROVE, 39 Oldridge Road.
 SW12 PRINCE OF WALES, 270 Cavendish Road.
 SW14 RAILWAY TAVERN, Sheen Lane.
 SW16 LEIGHAM ARMS, Wellfield Road.
 SW16 MITCHAM MINT, 1 Lillian Rd.
 SW16 PIED BULL, 418 Streatham High Rd.
 SW17 KINGS HEAD, Upper Tooting Road.
 SW18 THE CRANE, 14 Armoury Way.
 SW19 ALEXANDRA, Wimbledon High Rd.
 SW19 KINGS HEAD, Merton High Steet.
 SW19 PRINCESS ROYAL, Abbey Road.
 W1 WORCESTER ARMS, 89 George St.
 W1 ANGEL, Thayer Street.
 W1 CARPENTER'S ARMS, Seymour Place.
 W1 BRICKLAYER'S ARMS, Aybrook.
 W5 RED LION, St. Mary's Road.
 W6 CROSS KEYS, 157 Black Lion Lane.
 W6 TRUSCOTT ARMS, Shirland Road.
 W8 CHURCHILL ARMS,
 11 Kensington Church St.
 W11 FROG & FIRKIN, Tavistock Cres.
 W14 BRITANNIA TAP, 150 Warwick Road.
 W14 RADNOR ARMS, 247 Warwick Road.
 W14 WARWICK ARMS, 160 Warwick Road.
 BEDDINGTON PLOUGH, Croydon Road.
 CARLSHALTON FOX & HOUNDS, High Street.
 CARLSHALTON GREYHOUND, 2 High Street.
 CHEAM PRINCE OF WALES, Morden Road.
 GREENFORD BLACK HORSE, Oldfield Lane.

HAMPTON WINDMILL, Windmill Road.
HOUNSLOW CHARLOT, 34 High St.
HOUNSLOW CROSS LANCES, Hanworth Road.
HOUNSLOW QUEEN VICTORIA, 121 Bath Road.
HOUNSLOW EARL RUSSELL, Hanworth Road.
MITCHAM CRICKETERS, 340 London Road.
HOUNSLOW EARL RUSSELL, Hanworth Road.
HOUNSLOW WHITE BEAR, 198 Kingsley Road.
MITCHAM BULL, 32 Church Road.
MITCHAM CRICKETERS, 340 London Road.
MITCHAM KINGS'S ARMS, 260 London Road.
MITCHAM QUEEN'S HEAD, Cricket Green.
OSTERLEY HARE & HOUNDS, Syon Park, Wyke Green
SUDBURY BLACK HORSE, Harrow Road.
SURBITON RAILWAY TAVERN, Ewell Road.
SURBITON VICTORIA, Victoria Road.
SUTTON LORD NELSON, Lower Road,
SUTTON NEW INN, 18 Myrtle Road.
TEDDINGTON BUILDERS ARMS, 38 Field Lane.
TWICKENHAM ELL PIE, 9 Church Street.

OFF TRADE

SW14 Alan Greenwood's, 215 Clapham Park Rd.
SW11 Majestic Vintners, Hester Road.
SW11 39er, Webbs Road.
SW19 Alan Greenwood's, 308 Haydon's Road.
W14 Alan Greenwood's, 17 North End Road.
TOLWORTH Alan Greenwood's, 120 The Broadway
WALLINGTON Alan Greenwood's, 8 Butter Hill.

OUTLETS — West Central and North PUBS

WC1 GOLDEN LION, 2 Britannia Street
WC1 LAMB, Lamb's Conduit St.
WC1 MOON, 18 New North St.
WC1 PRINCE ALBERT, 2 Acton Street
WC1 PRINCESS LOUISE, 208 High Holborn.
WC1 QUEENS HEAD, 66 Acton Street.
WC1 SUN, 63 Lamb's Conduit St.
WC2 GEORGE IV. 28 Portugal St.
N1 CAMPBELLS, 21 Bridport Place.
N1 CROWN, Clouesley Rd.
N1 EUROPA LOUNGE, Kings Cross Station.
N1 LORD WOLESEY, White Lion St.
N1 MALT & HOPS, 33 Caledonian Rd.
N1 PINT POT, 54 Pentonville Road
N1 MARQUESS TAVERN, Marquess Rd.
N1 POTTERS BAR, Gt. Northern Hotel,
King X.
N1 PRINCE ARTHUR, 49 Brunswick Place.
N1 SWAN TAVERN, 125 Caledonian Road
N2 FIVE BELLS, East End Rd.
N2 WELCH BROS. 130 East Finchley
High Rd.
N2 WINDSOR CASTLE, The Walk, Church
N6 ANGEL, 37 Highgate High St.
N6 DUKES HEAD, 16 Highgate High St.
N6 HAMPTONS, 385 Archway Road.
N6 VICTORIA, 28 North Hill.
N8 DICK'S BAR, 61 Tottenham Lane.
N9 COCK, Hertford Rd.

N9 RISING SUN, Winchester Rd.
N10 MARTIN'S FREE HOUSE,
89 Colney Hatch Lne.
N12 MOSS HALL TAVERN,
283 Ballard's Lne.
N19 Marlers, 19 Archway Road
N19 J.J. MOON, Landseer Road
N20 BULL & BUTCHER,
1277 High Rd. Whetstone
N22 STARTING GATE, Buckingham Rd.
NW1 SHIRES BAR, St. Pancras Station.
NW1 VICTORIA & ALBERT BARS,
Marylebone Stn.
NW1 VICTORIA, 2 Mornington Terrace.
NW3 HOLLY BUSH, Holly Mount.
NW3 NAG'S HEAD, 79 Heath St.,
BARNET ALEXANDRA, Wood St.
ENFIELD KING & TINKER, Whitewebbs Road.
ENFIELD CRICKETERS, Chase Side Place.
ENFIELD OLD PARK HEIGHTS HOTEL,
Old Park Rd.
OFF TRADE
N1 2 Brewers, 8 Pitfield St.
N10 Finlay Wines, 392 Muswell Hill Bdwy.
N11 Originales, Friern Barnet Rd.
N15 Majestic, Colina Mews Park Road.
NW3 Greenwood's 150 Haverstock Hill.
NW6 Grogblossom, 253 West End Lane.
BOREHAMWOOD Grogblossom, Shenley Road.
CLUBS
N22 Wood Green Labour Club, Stuart Cres.



The Campaign for Real Ale Ltd 1983

ISSN 0144 7866

Printed by DARU GRAPHIC
Harmondsworth, Middlesex.

Tel: 01-759 1720