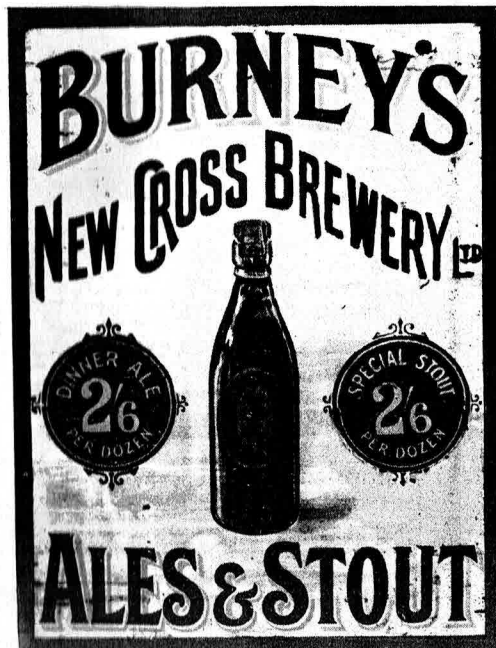


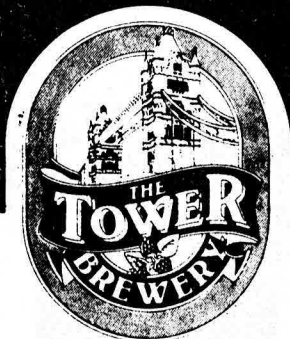
Vol.4 No.7
AUGUST
1982

12p

LONDON DRINKER

Produced by the London branches of the Campaign for Real Ale Ltd





**NOW
OPEN**

THE BRIDGE HOUSE

TOWER BREWERY'S OWN PUB

Bermondsey Bitter, Tower Special and Old Yeoman Ale all available on tap.

Polypins are available for collection 6 days a week.

THE TOWER BREWERY

London's newest real ale brewers
218 Tower Bridge Road, London SE1 2UP.
Telephone: 01-403 2276

THE KNOWLE HILL STEAM RALLY

WITH CAMRA BEER TENT

3 miles west of Maidenhead
on the A4

SAT 14th & SUN 15th AUGUST

Opening Hours on Sat 11 a.m. - 11 p.m.

on Sunday 12 noon to 5 p.m.

Admission to event £1.75

Steam Engines

Old Cars

Motor Cycles

Fair Ground & Many Stalls

Live Band & Fireworks

on Saturday Night

London Drinker

Contributions, correspondence and subscriptions (£1.40 for 6 months) should be sent to: Stan Tompkins,, 122 Manor Way, Uxbridge, Middx.

Editors: Mike Hammersley, Ron Atkins

Advertising: Mike Hammersley

21 Melville Court

Guildown Road

Guildford

Surrey, GU2 5ER

Tel: 01-432-4389 day

0483 32597 evening

September issue available at end of August.
Closing date for copy 4th August.

LONDON DRINKER is published by the London Branches of CAMRA, the Campaign for Real Ale Ltd.

The Views expressed in this publication are those of the individual contributor and are not necessarily the view of either the London Branches of CAMRA or the Campaign for Real Ale Ltd.

Through the Roof - The Facts

For years we have said that the beer prices in London are far too high. Now we can prove it. Recently the West London branch of CAMRA carried out a price survey of pubs which they had checked previously in December 1979. What they found is analysed by Roger Warhurst.

A SAMPLE OF pubs was drawn from within a sector of West London from the West End through Kensington, Chelsea, Fulham, Hammersmith and Chiswick to Acton. Tied and free trade, tenanted and managed pubs were all included. The majority of the pubs surveyed were those shortlisted for inclusion in the 1983

Good Beer Guide, with a number of random additions to provide a full cross section of brewers. Notoriously high priced pubs which may have distorted the picture have been excluded, so the prices quoted represent a reasonable average of those charged throughout the West London sector.

Tied Houses

The saloon bar prices charged in tied houses controlled by the 8 major London brewers (93% of Greater London pubs) were compared. Table 1 compares prices charged for cask conditioned beers in December 1979 with those charged in June 1982.

Table 1

Comparison of prices in tied houses Dec. '79 - June '82.

BEERS	O.G.	Average price per pint (pence)		% increase	Price per O.G. (Pence)
		Dec. '79	June '82		
	(a)	(b)	(c)	(d)	(e)
MILDS (O.G. 1030 - 1032)					
Young BMA	1030	36	54	50	1.80
Truman Prize Mild	1034	—	69.5	—	2.04
ORDINARY BITTERS (O.G. 1035 - 1039)					
Fuller Chiswick Bitter	1035.5	39.3*	61.6	56.7	1.74
Truman Bitter	1036	—	72.3	—	2.01
Young Bitter	1036	40.9	62.6	53.1	1.74
Wethered Bitter	1036.6	43.3	67	54.7	1.83
Allied Bitters (Benskin etc.)	1037	41.5*	64.8	56.1	1.75
Watney London Bitter	1037.5	45	68.7	52.7	1.83
Courage Best Bitter	1039	45	67	48.9	1.72
Charrington IPA	1039.5	42.6	67.4	58	1.70
Average	1037.1	42.5	66.4	56.2	1.79
PREMIUM BITTERS (O.G. 1040 - 1047)					
Fuller London Pride	1041.5	42.8	67	56.6	1.61
Bass	1044	44.8	74.2	65.6	1.69
Watney Stag Bitter	1044	48.5	75	54.6	1.70
Truman Best Bitter	1045	—	73.7	—	1.64
Courage Directors	1046	50.6	74.7	47.6	1.62
Fremlin Tusker	1046	47.5	72	56.5	1.56
Young Special	1046	44	69	56.8	1.50
Ind Coope Burton Ale	1047.5	48.3	71	47	1.49
Average	1045	46.6	72.1	54.7	1.60
STRONG BITTERS (O.G. 1048 - 56)					
Fuller ESB	1055.75	48.5	75.5	55.9	1.35

N.B. * Price for Fuller Bitter; Chiswick Bitter not available at the time.

* Price for Ind Coope (Romford) Bitter.

Give us back our 9p!

As can be seen from the Table, the average price of a pint of ordinary bitter in the saloon bar of a West London tied house is now 66½p compared with 42½p just 2½ years ago. Premium bitter

now costs 72p on average, compared with 46½p two and a half years ago. Prices for ordinary and premium bitters have risen on average 56% over that period. This compares unfavourably with national figures showing price rises generally of

36% for all items and 47% for all alcoholic drinks over a similar period. Average earnings have increased by 43%, and manual workers wages by only 35% over the same period. (Source: *Monthly Digest of Statistics* - HMSO)

Putting it simply, if beer prices had merely kept pace with prices generally and basic wage rates, we would be paying on average 9p less per pint. Increased excise duty on beer imposed in three successive budgets over the period accounts for 5½p of this amount, which leaves 3½p per pint unexplained. It is hard to escape the conclusion that, as CAMRA has often pointed out, we are being asked to pay proportionally more for a pint today compared with 1979 in order to maintain the profit margins of the brewers and publicans at a time of falling beer consumption.

Value for money

Which beers offer the best value for money? The relationship between retail price and strength of

beers is complex since the price of a pint also reflects various fixed costs such as labour, plant and transport which do not vary significantly according to how strong the beer is. Nevertheless a rough relationship can be derived by dividing the retail price by the alcoholic strength as represented by the original gravity of the beer — column (c) of Table 1 by Column (a).

The results are given in Column (c). In general the strong and premium bitters are better value than the ordinary bitters and milds. You pay on average 1.60p per O.G. for premium bitter as compared with 1.79p per O.G. for ordinary bitter. Best value of all is the extra strong Fuller's ESB at 1.35p. Best value amongst the premium bitters are Ind Coope Burton Ale at 1.49p and Young's Special at 1.50p. Top value ordinary bitters are Charrington's IPA at 1.70p and Courage Best Bitter at 1.72p. Young's Mild far outstrips the new Truman Mild in terms of value for money.

Table 2 **Sample Free House prices - June '82**

BEERS	O.G.	Price (p)
WEAK BITTERS (O.G. 1030 - 1034)		
Ruddle Bitter	1032	67
Eldridge Pope Dorchester Bitter	1032.5	69
King & Barnes Sussex Bitter	1034.9	65
Average	1033.1	67
ORDINARY BITTERS (O.G. 1035 - 1039)		
Greene King IPA	1035	69
Wells Bitter	1035	70
Adnam Bitter	1036	68
Shepherd Neame Bitter	1036	69
Gale BBB	1037	68
Arnell BBB	1038.5	69
Average	1036.3	68.8
PREMIUM BITTERS (O.G. 1040 - 1047)		
Ringwood Bitter	1040	69
Felinfoel Double Dragon	1040	73
Sam Smith OBB	1040.9	74.3
Everard Tiger	1041	72
Fuller London Pride	1041.5	68
Devenish Wessex Bitter	1042	74
Brakspear Special Bitter	1042	70
Courage Directors	1046	75
Young Special	1046	77
Ind Coope Burton Ale	1047.5	75
Average	1042.8	72.7
STRONG BITTERS (O.G. 1048 - 1056)		
Greene King Abbot	1048	78
Eldridge Pope Royal O & K	1048	75.5
Ruddle County	1050	82
Fuller ESB	1055.75	78
Average	1050.4	78.4

Poorest value amongst the premium bitters is Bass at 1.69p and Watneys Stag bitter at 1.70p. Below average ratings amongst the ordinary bitters include Watney London bitter and Wethered bitter at 1.83p with Truman bitter the poorest value of all at 2.01p per O.G. Both Truman Mild and Bitter stand out as being substantially overpriced in relation to their strengths. This would appear to be a misguided policy for beers that are fighting to establish themselves amongst better-known rivals.

Free Trade

Comparisons are more difficult in the free trade because of the range of beers available and the fact that this is always changing. The number of comparisons that can be made indicates price

increases over the 2½ year period which are slightly higher than in the tied trade at 58% for premium bitters.

Table 2 provides an indication of prices currently being charged for various beers available in the free trade in West London. The small size of the sample however does not allow average prices for particular beers to be properly assessed. The figures merely indicate the run of prices. In general, strength for strength, prices tend to be 3 to 4p more than in tied houses. There are however instances of free houses charging well over this, and one particular free house surveyed was charging between 8p and 12p more for certain premium and strong bitters.

News & Views

■ ALL UP WITH THE AIR

YOU HAVE TO hand it to Watney's. When they do it, they do it properly. The dreaded DCL Air Pressure 'handpump' which has caused so much aggravation between the company and CAMRA is at last on its way out.

When it was introduced together with Watney's real ale, most of us regarded it as part of their sullen refusal to admit defeat. Now the more positive approach which they have shown in their withdrawal of the infamous Red Barrel and in the more recent introduction of Webster's Yorkshire bitter looks like winning again. Within a year, all cask-conditioned beer in Watney houses should be served by hand-pulled beer engine.

■ CAN IT BE DONE?

ANOTHER WATNEY breakthrough, it would seem. They claim to have introduced traditional beer, in this case London-brewed Stag bitter, into cans. "After extensive research and development, Watney Mann National Sales have perfected the process of capturing the traditional qualities of a draught ale — but in a can" they announce proudly.

They don't actually say that here is a living beer, kicking and screaming inside the can and waiting for the lucky drinker to slam it down his or her throat. What they do admit, which is something all of us have long recognised, is that gassy beer does no one any good. "The new TV commercial" they say "clearly illustrates the fact that Stag is not gassy like ordinary canned beers.

In a light-hearted way this will provide important reassurance to the high proportion of housewives buying beer on their husband's behalf".

We doubt whether the Equal Opportunities Commission would go along with all of that, but it appears to us to be at least a step in the right direction. Has any one tasted the stuff?

■ TRUMAN NUMBER FOUR

TO ADD TO their new draught beers, Truman are testing a strong bitter. Called Samson and weighing in at 1055 O.G. — the same strength as Fuller's ESB — the beer is available until the end of the month in at least five pubs. These are the **Alexandria** in Wood Street, Barnet; the **Railway Hotel**, Station Road, Edgware; the **Cock** in Fleet Street; the **George & Dragon**, St. John Street, EC1 and the **Wheelwrights Arms**, a free house in Southbridge Road, Croydon.

As with the other Truman beers it is not cheap. At around 80p a pint, it compares unfavourably with the general price of ESB.

■ MAN'S BEER

MOTOR-CYCLE FREAKS in our experience tend to be young and to drink lager. We may be wrong. Anyway, the Isle of Man Tourist Board are taking a stand at the "Bike '82" exhibition at Earl's Court at which they will plug — alongside the TT race and the sunshine — the wares of the island's Okell Brewery.

The Isle of Man has long been highly regarded by many beer drinkers. The two local brewers have to conform to laws that prevent them putting additives into their beer. Also, the pubs do not

Continued over

News & Views continued

close during the day. The exhibition runs from August 20 — 30 and Okell's beer will be on sale.

■ SWEDEN LIVES!

AS IF TO prove that truth really is stranger than fiction, a couple of examples of the Swedish Message treatment have come to our attention. And in the pub industry, yet.

These are cases where the landlord is celebrating his birthday or wedding anniversary and his wife has arranged for him to receive a singing telegram. One such message was described in the *Morning Advertiser* as being 'delivered by a pretty "schoolgirl" in risqué outfit'. No further comment is needed.

■ PRIZE BEER

THE VICTORIA BREWERY are bringing out a strong beer (1043 O.G.) to complement their Victoria Bitter. They are looking for a name and will give a polypin of Victoria Bitter to anyone

who comes up with something suitable.

If you think of a good name, write to the brewery at Broadmeads, Ware, Hertfordshire.

■ EASTER PARADE

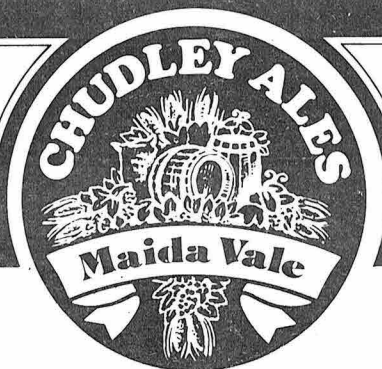
THE CREDITS WERE omitted from our photo feature last month. The brewers' drays shown On Parade were taking part in this year's Easter Parade in Regent's Park. The photographer was Ian Bailey.

We have also twice given the wrong district number to the **Prince Albert**, Aston Street, which is in WC1.

■ MAINLINING

IT LOOKS AS if the long-awaited introduction of Taylor Walker Mainline may at last be on the way. The beer is being tested in some pubs at present, so keep an eye out for it.

LORDS STRONG ALE
O.G. 1050
LOCAL LINE BITTER
O.G. 1038

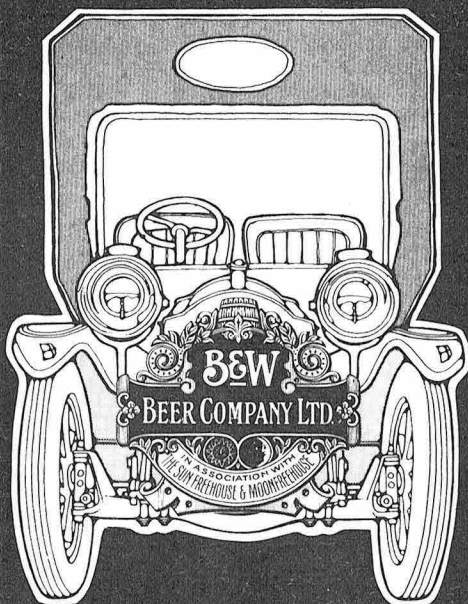


1A SALTRAM CRESCENT
MAIDA VALE
LONDON W.9
01-969 7832

MAIDAVAILABLE IN SOME OF THE BEST FREE HOUSES IN LONDON
TAKE-AWAY DIRECT FROM THE BREWERY AND FROM:—
THE GROG BLOSSOM, WEST END LANE NW6
THE BITTER EXPERIENCE, 129 LEE ROAD SE3
CARVIL WINES, 8 NORWOOD HIGH STREET SE27

Phone the Brewery for details

**B&W BEER
COMPANY LIMITED**
**'TRUCKIN'
BEERS'**



NOW!

The largest independent wholesaler of
cask conditioned ale in England.

NOW!

Building a brewery in West London for
production in late Summer 1982.

NOW!

Promoting (through a subsidiary company)
THE LONDON BEER FESTIVAL each year.

Berman · Woollard · Selman
Silverdale Road, Pump Lane Industrial Estate
Hayes, Middlesex. 01 561 3345/1750

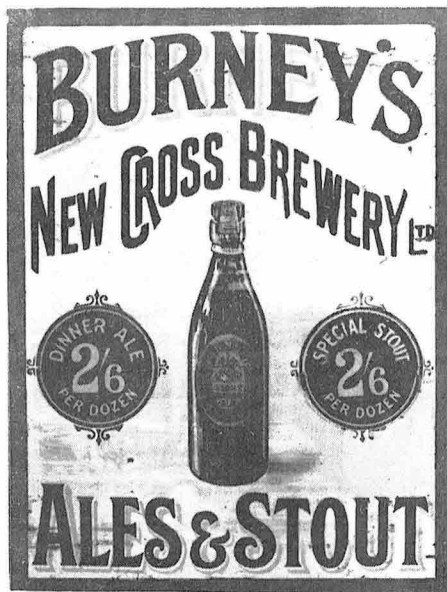
Hoare's and other Ghosts

Beginning a series on London's brewery history, Mostyn Lewis provides a note on Burney's and John Davis covers the takeover trail that relates to one of his favourite pubs.

THE ENAMEL PLATE in our picture is a rare relic of an almost forgotten brewer. Burney's were one of a series of companies which occupied the New Cross Brewery in Pomeroy Street, SE14. Burney's were incorporated in 1898 and lasted only until 1905, when the concern became the New Cross Brewery Co. Ltd. This company in turn was voluntarily wound up in 1925, the pubs being acquired by Hoare who were in turn acquired by Charrington in 1931.

There is no trace of the brewery now, the site having been developed as Council Housing.

(Our thanks to the Lewisham Local History Society for making the plate available to us.)



A drawing of the **Leigham Arms** in Streatham, which hangs on the wall inside the pub, dates from 1907. The sign shows that the pub was then owned by Crowley's. The firm of ACS and H Crowley brewed at the Croydon Brewery, 137/9 High Street, Croydon which they had built in 1908, although the Crowley family had been brewing in the Waddon area of Croydon for about 200 years previously.

Crowley's, with their handful of pubs, were taken over by a fast-expanding brewer called Hoare & Co. who had the Red Lion Brewery (founded 1700) in East London, and Crowley's Brewery was shut down in 1929.

Meanwhile Hoare's, in their turn, were taken over by Charrington and their Red Lion Brewery was shut down in 1934.

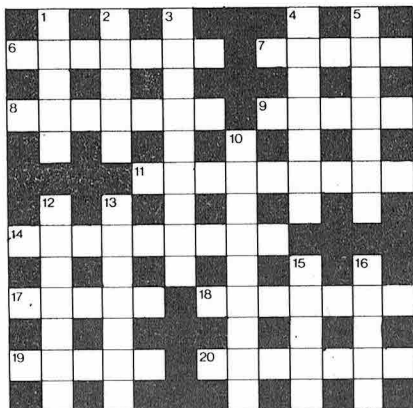
Even the great Charrington complex could not resist the takeover craze and they fell victim in 1967, becoming part of the mighty Bass empire.

So the **Leigham Arms** reflects the changing pattern of pub ownership in the UK over the years.

(Note: this piece by John Davis now hangs next to the drawing to which he refers in the **Leigham Arms**.)



DRINKER XWORD 33



Compiled by Dave Quinton

DOWN

- 1 Keeps in many cereals (5)
- 2 Around for a whole fight (5)
- 3 Lacks bite at formal gathering (5,4)
- 4 Be brave and take it (7)
- 5 Mistakenly adopt the French. You're stuck with a young frog (7)
- 10 Lon or gal may amount to this (4,5)
- 12 Right then two articles left in east, good to drink (4,3)
- 13 Slow drinker about fifty unlikely to be worn out (7)
- 15 Good man one follows and comes upon a fourteen pounder (5)
- 16 Only one leg? Get away with you! (3,2)

First correct solution wins £4 worth of Real Ale.
Closing date August 26th.

Last month's Xword solution | page 16.

ACROSS

- 6 Horse and brave go after toy containing hollow centre and find brewer (7)
- 7 Stop on the way back and find traveller (5)
- 8 Shut can to form stem (7)
- 9 Stare out redhead - end up with growth on end of ravine (5)
- 11 Let Ron sag after a few pints of this (6,3)
- 14 Bears reel wildly but are worth protecting (4,5)
- 17 Cut into ship - discover remains (5)
- 18 Tip-top Pole has breakdown and finds vessel (4,3)
- 19 Strips back rest (5)
- 20 Put up with buying your round (5,2)

REAL ALE and REAL JAZZ

AT THE

Prince of Orange

118 LOWER ROAD

ROTHERHITHE

SE16

237 9181

LIVE JAZZ SEVEN NIGHTS A WEEK PLUS SUNDAY LUNCHTIME

RESIDENT REAL ALES: TRUMANS MILD, BITTER AND BEST BITTER.

3 MINUTES FROM SURREY DOCKS UNDERGROUND

BUSES 1, 17, 47 and 188 PASS THE PUB

The Linden Drunker Column

IS YOUNG'S going off? As the summer heat storms gather, this becomes an increasingly critical question for South Londoners such as myself. Is it the cellars? Is it the construction work in the brewery yard? Is it the change in head brewer of a year or so ago?

Whatever it is it is very worrying. Some of us moved to South London especially to drink John Young's special bitter. The thought of permanent decline is too appalling to contemplate. Besides we can't afford the move to King and Barnes or Wethered's territory.

One sad portent was observed the other week when black smoke could be seen emerging from the brewery chimney while the annual general meeting was taking place. Can they not decide on a successor to John Young? I think we should be told.

* * *

This column warned you months ago, of course. Whitbread have been on the closure trail again. Apparently their beers are so popular that they cannot afford to keep on brewing in two of the biggest cities in the country — Liverpool and Leeds. This makes six brewery closures in six years from Whitbread. In September CAMRA will hold the Great British Beer Festival in Leeds for the second time. Perhaps the occasion should be chosen for a massive campaign against Whitbread closures with a march on the brewery (which will close in January 1983). For those of us who believe CAMRA is going soft round the gills this would be an encouraging move.

* * *

My latest issue of *What's Brewing*, CAMRA's monthly newspaper, tells me that the CAMRA Investments Company has sold its 'northern outpost', the Duke of Wellington in Newcastle. What is this southern chauvenism? St. Albans, home of *What's Brewing*, and Cambridge, home of CAMRA Investments, are both rather further from the centre of Britain than Newcastle. It is the outpost which is selling the pub, not the other way round.

* * *

I have to report a most alarming brewing development. You may have heard of the

brewery which substitutes potato peelings for malt (if you have not I am afraid the libel laws prevent me from revealing its name). You may know about high-gravity fermenting — when they brew beer to a fiendish strength and then water it down. Now comes brewing by pressure cooker. The Brewing Research Foundation, which your friendly neighbourhood real ale brewery probably subscribes to, has come up with a dastardly new process designed to cut the energy costs involved in boiling wort — a crucial phase in the brewing process.

Apparently wort boiling accounts for 70% of the energy costs of brewing and takes two hours or more. Now the research foundation has come up with the idea of boiling the wort at five times the usual atmospheric pressure. At this pressure boiling takes only one minute.

Foundation director Bernard Atkinson is quoted in *New Scientist* magazine as saying that this process is the easiest way of reducing brewing costs so it is likely to be in action in the big breweries very soon. What nobody has been able to tell me is whether this affects the taste of the beer. I think we should be told.

REAL BEER IN LONDON NEW EDITION NOW AVAILABLE

- 2375 Pubs
- 130 Beers
- 61 Breweries
- 48 Maps

Price £1.95 plus 21p postage from RBIL
82 Cavendish Avenue, Harrow, Middx.
enclose a 8"x6" SAE.

INTRODUCING.

J.J. MOON'S

FREE HOUSE & COCKTAIL BAR

LANDSEER ROAD, HOLLOWAY, LONDON N.19

(ESTABLISHED JUNE 1982)

TRADITIONAL ALES

FROM ADNAMS, ARKELLS, BELHAVEN,
GODSONS, GREENE KING, SHEPHERD NEAME,
TIMOTHY TAYLOR, TISBURY, WADSWORTHS
& MANY OTHERS.

PLUS

A WIDE RANGE OF EXOTIC COCKTAILS,
ENGLISH COUNTRY WINES & TRADITIONAL
CIDERS ON HAND PUMP.

ALSO AVAILABLE AT "MARTINS FREE HOUSE"
89 COLNEY HATCH LANE, N.10 AND "DICK'S
BAR", 61 TOTTENHAM LANE, N.8.

TRADITIONALLY BREWED BEER

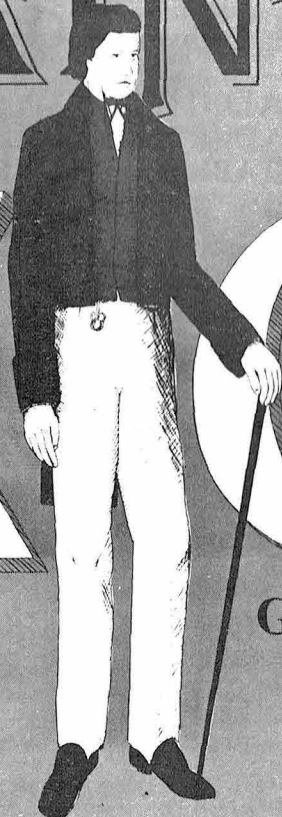
A Giant of a Beer

PAINE'S

EG

EXTRA

GRAVITY



James Toller, The Eynesbury Giant.
Born 1798. Died 1818 - 8' 6" tall.

BREWED BY PAINE & Co. Ltd., ST. NEOTS,
CAMBRIDGESHIRE

Devenish of Wessex *by Paul Hathaway*

"And here's your starter for ten . . . What's the connection between the Norman invasion of 1066 (BOO HISS) and the Weymouth Brewery of Devenish (HOORAY)?" Well read on and all will be revealed . . .

Dorset is fortunate to have four independant brewers, of which Devenish have been, in existence the longest. The fact that Dorset has so many breweries, is in itself, not surprising since the lush farmlands have provided many bushels of barley and the springs fine, fresh water for many years. In fact, brewing has been going on here since the 13th Century (fact) and before (maybe).

The site of the present Devenish Brewery has been used since 1252 for brewing. Situated in Hope Square on the harbour front, it lies in the heart of the old brewing centre of the town. In the immediate vicinity, there have been several brewers in the distant and not-too-distant past. The Davis Brewery ceased to exist in the early part of the last century. The not-too-distant past is represented by the John Groves Brewery, which was next door, and we'll hear more of them later.

Devenish have been around since 1742 on the present site, though only becoming Devenish in 1824 when Mr. Devenish bought the brewery from the Flew family. The Flews were the descendants of the Fowlers, who originally founded the Brewery.

The name of Devenish had become well established around the West by the early 1900's, and they continued to expand through the usual way by buying up the opposition. They bought pubs in Falmouth and Penryn, supplying the beer by rail from Weymouth, and firmly established a bridgehead in Falmouth by buying the local brewery of W & EC Carnes, as well as buying the Truro brewers, Mallett's. By the outbreak of the Second War, the Redruth Brewery Company and the Treluswell Brewery had joined the empire, the latter being jointly purchased with the St. Austell Brewery. These were bought under one roof as the Devenish Redruth Brewery.

Devenish also bought up brewers in Devon. The company used the former Exeter brewery of Alwyn & Snowdens Well Park Brewery as a depot from 1925. This in turn was sold off, and the Vallances Brewery in Sidmouth was then used for this purpose. The Devenish Wessex

Best Bitter takes the name Wessex from the trade name of the old Vallances' bitter.

During the war, the Germans tried to bomb the Naval base at Portland. Often they missed, resulting in the hitting of the Brewery in 2 separate raids in 1940 and 1941. But with the goodwill of Groves and of the Dorchester brewers of Eldridge & Pope, Devenish continued to produce their own beers.

In the early Sixties in order to combat the threat of takeover, Devenish and Groves combined, trading under that name until 1965 when the name Groves was dropped. For many years, the railway employees got passes to go to Weymouth, where they enjoyed Groves' beers and often used to take home some beer with them. This is the reason that Groves decided to open the Swindon depot as well as buying several houses near the station.

So the Devenish lion, known as 'Herbert', has found his way to most parts of the south of England. They brew two real ales: Wessex Best Bitter (o.g. 1042.5), a splendidly smooth, hoppy brew, and Bitter (or Light Mild in some parts) with an o.g. of 1032, a thin and hoppy brew.

There are several outlets in and around London that serve real Devenish regularly:

Sun, Lamb's Conduit St., WC1
Moon, New North Street, WC1
Sekforde Arms, Sekforde Street, EC1
Bricklayer's Arms, Charlotte Road, EC2
Truscott Arms, Shirland Road, W9
Welch Bros., E. Finchley High Road, N2
Martins, Colney Hatch Lane, N10
Southern Stars, New Cross Road, SE14
Tramshed, Woolwich New Road, SE18
Woodman, Battersea High Street, SW11
Railway Tavern, Sheen Lane, SW14
King's Arms, Lion Gate, Hampton Court
Eel Pie, Church Street, Twickenham
Barley Mow, Tonbridge
Lobster Pot, West Malling
Little Gem, Aylesford
Rochester Real Ale Bar
Minstrel Wine Bar, Maidstone
Golden Hind, Hastings
Sandgate, Sandgate
Charlie Brown's L:ton
Blakes Wine Bar, Watford
Fox and Hounds, Royston
Salisbury Arms, Cambridge

Several more outlets take Devenish on an occasional basis.

So, look out for Herbert, and sample his wares. In them, you will find a taste of rural England and you might even wish to sample Devenish on their home territory in deepest Dorset (passports arranged at a moderate fee). I think you'll enjoy the beers, but be warned — Wessex is deceptively strong.

Your starter for ten? William Devenish's ancestors came over with the Normans and spread along the south coast from their lands in Sussex, to Weymouth. I always said that anybody who has red, white and blue as their colours can't be all bad . . . can they?

BRANCH DIARY

The following events will be held by CAMRA branches during August. For branches not mentioned, please ring Branch Contact.

ENFIELD & BARNET: Tue 3 (8.30). *Social. Golden Hive*, Green St., Enfield — Sat 7 (10.45). *Ramble round 5 pubs*. Start at *Goat*, Firty Hill.

KINGSTON & LEATHERHEAD: Thu 12 (8.00). *Branch. Brewery Inn*, Ashted.

NORTH LONDON: Thu 5 (8.00). *Two-pub social. Carlton*, Carlton Vale, NW6 and *Queens Arms*, Kilburn High Rd., NW6. — Tue 10 (8.00). *Social. JJ Moons*, Landseer Rd., N19. — Tue 17 (8.00). *Social. Victoria*, North Hill, N6 — Tue 24 (8.00). *Branch. Victoria*, Mornington Terrace, NW1.

RICHMOND & HOUNSLOW: Thu 12 (8.00). *Social. Rose of York*, Petersham Rd., Richmond — Mon 16 (8.00). *Branch. White Bear*, Kingsley Rd., Hounslow — Thu 26 (8.00). *Social. Builders Arms*, Field Lane, Teddington.

SOUTH-EAST LONDON: Mon 9 (8.00). *Branch. North Pole*, Greenwich High Rd., SE10 — Sat 21. Coach trip to Brighton. Cost approx. £2.50 — £3.00. Details from Branch Contact — Wed 25 (8.00). *Games social. Blacksmiths Arms*, 257 Rotherhithe St., SE16.

SOUTH-WEST LONDON: Thu 5 (8.30). *Four-pub crawl. Start Raglan*, Wandsworth Rd, SW8 — Tue 24 (8.30). *Social. Country House*, 4 Groton Rd., SW18.

WEST LONDON: Tue 10 (8.00). *Pub of the month. Hollywood Arms*, 45 Hollywood Rd., SW10 — Thu 19 (8.00). *Branch. Brook Green Hotel*, Shepherds Bush Rd., W6.

CAMRA Branch Contacts

BEXLEY
BROMLEY
CROYDON & SUTTON
E. LONDON & CITY
ENFIELD & BARNET
KINGSTON &
LEATHERHEAD

DES WARD
ROGER MASON
DAVE HAMER
PETER ROBERTS
TONY MORGAN

JOHN NORMAN

NORTH LONDON
RICHMOND &
HOUNSLOW
SOUTH-WEST ESSEX
SOUTH-EAST LONDON
SOUTH-WEST LONDON
WEST LONDON
WEST MIDDLESEX

LAURIE GORDON

ANDY PIRSON
CHRIS CASHMORE
IVOR BLOOR
JOHN DAVIS
RODNEY HOLLOWS
KEITH WILDEY.

Erith 45716(H)
464 2909 (H)
647 0992 (H) Epsom
Upminster 23581
440-2186 (H)

546 3476 (H)

448 1692 (H)

997 1633 (H)
Brentford 211703 (H)
699-7335 (H)
670 0734 (H)
723 2798 (H)
423 1243 (H)

Erith 33020 x 4 (W)
407 4466 x 294 (W)
41511 x 66 (W)
213-7374 (W)
283 1000 x 2944 (W)

Weybridge 47282 x
2659 (W)
359 1340 (W)

283 1030 x 356 (W)
934 4396 (W)

965 7417 (W)

● LOCAL ●

■ FINCH'S THINK AGAIN

A DETERMINED EFFORT by the regulars of a Finch's pub, supported by CAMRA, may save the pub from the worst effects of modernisation. The **Kings Arms** in Fulham Road, SW10, writes *Roger Warhurst*, is a rare example of a traditional Victorian pub which retains many of its original fittings: etched glass screens, tiles, wooden bar fittings and large mirrors among them. It has miraculously escaped 'improvement' over the years and is a real Chelsea local.

However, Finch's decided to change all this, inspired perhaps by the Watney pub opposite which was given the refurbishing treatment a few years ago. Their scheme would remove most of the screens and fittings, including public bar and porch, to create 'a one-bar mock Victorian interior. They had intended to close the pubs at the end of June and start the work.

The regulars quickly organised a petition and sent it to Finch's. They also received publicity in the media. CAMRA's West London branch wrote to Finch's, pointing out that whereas mock Victorian interiors are commonplace in London pubs with genuine traditional character are rare indeed. At national level, CAMRA's Pub Preservation Group has become involved and has mobilised support among influential groups such as the Victorian Society.

This activity may have produced some results. It is rumoured that a new scheme is being drawn up which will be more sensitive to the character of the pub. A letter from Finch's to the West London branch states that "any alterations will be made to ensure that as many as possible of the original fittings are retained and we shall create the right sort of atmosphere".

At the time of writing the pub is still open. We shall keep a close eye on developments and will report on progress in *London Drinker*.

■ FALCON BREW

A PUB WHICH we believe has so far escaped the onset of real ale is likely to become the first home-brew pub in London owned by Grand Metropolitan. The Watney and Truman group's subsidiary, Falcon Catering, will be running the **Orange** in Pimlico Road, SW1 when it re-opens in September.

Brewing equipment will be supplied by Peter Austin of the Ringwood Brewery, which suggests that there will be no cutting corners in the brewing process.

■ BARGAIN BEERS

OUR PLEA FOR pubs selling bitter at 60p a pint or below has produced a few entries, all Young's houses. This is not surprising, as the Public Bar price for Young's Ordinary bitter in managed houses is 60p. This is the price of a pint in the following pubs: The **Crane**, near the brewery in Armoury Way, SW18; the **Grand Junction Arms** in Acton Lane, NW10 and the **Castle** in Putney High Street, SW15.

J.J. Moons, the new free house in Landseer Road N19, sells one beer at 59p between 5.30 and 6.30 and between 11 and 12 noon. On Friday evening, the price drops to 58p.

The **Ebury Arms** in Pimlico Road, SW1 knocks 10p off a pint of Webster's Yorkshire bitter between 12.30 and 2 p.m.

We think that 61p for a pint of Fuller's London Pride, which is quite a strong beer at 1041.5 O.G., may qualify as a bargain. That is what you pay at the **Anchor & Hope** on the River Lea at High Hill Ferry, E5.

Our consolidated list seems to be holding up. Please let us know if any of the pubs should be removed and, of course, tell us about new ones that should be included. Next months we hope to provide more information about times but, in the meantime, please treat the divisions as non-exclusive. Some 'evening' pubs, for instance, also do early 'lunch' and 'Sunday' reductions.

All Day

The **King of Beasts** in Islington; the **Pakenham Arms** in Clerkenwell; the **Clarence** in South Kensington; the **Hop Picker** in Hackney; **Dick's Bar** in Hornsey; **Welch Bros.** in East Finchley; **Sun** in Carshalton; **Royal George** in Greenwich; **Royal Albion** in Hounslow; **Pied Bull** in Streatham; the **Windsor Castle** in Islington; the **Ranelagh** in Bounds Green and the **Ironbridge Tavern** in Poplar.

Early evening

Ship & Shovel in Charing Cross; **Percy Arms**, Clerkenwell; **Moon** in Holborn; **Malt & Hops** in Kings Cross; **Marlers** in Islington; **Old Windmill**, Hadley Highstone; **Salisbury**, Barnet; **Wattenden Arms** in Kenley and the **King William IV** in Hampstead.

Other evening

Leather Exchange Tavern in Bermondsey; **Worcester Arms**, Marylebone; **King's Head** in

Local continued

Merton; **Golden Lion** in St. James's; **King's Head** in Acton; **Cavalier**, Wallington.

Lunchtime

Bricklayer's Arms in Shoreditch and the **Edinburgh** in Peckham.

Beyond category

Mitcham Mint in Streatham; **Wellington** in Waterloos and the **Prohibition** in Croydon.

■ VENUES FOR VICTORIA

WE HAVE BEEN sent a list of current outlets for Victoria Bitter, brewed by the small Victoria Brewery of Ware in Hertfordshire. These are: **Royal Tar** in Brentford; **Windsor Castle** in East Finchley; **Welch Bros.** in East Finchley; **Cross Keys** in Edmonton; **Old Park Heights** in Enfield; **Sun** in Holborn; **Frog & Firkin** in Westbourne Park; **Queen Victoria** in Woolwich; **Ship** in Rotherhithe and the **Malt & Hope** in Kings Cross.

There are also two off licences: **Barrels** in Hampstead and the **Bitter Experience** in Blackheath.

■ JUBILEE STRIKES AGAIN

THERE IS JUST no keeping the **Jubilee** out of the news. This North Finchley real ale outpost in Ballards Lane has now added Mann's IPA and Watney's Stag to the Webster's Yorkshire bitter which we eventually established was being served from handpumps. Where will it end?

XWORD SOLUTION 32

1	T	2	E	3	R	4	M	5	S	6	T	7	U	8	O
	O		A		N		L		E		V		O		
8	T		E		N		A		N		T		S	9	C
	E		C		U		E		10		11	B		O	A
		12	T		H		E		13		14	I		N	S
14	A								15		R		E		C
16	S		17		E		R		18		R		A		D
	H		19		L		O		20		S		P		R
		21	B		L		U		22		R		B		
									23		T		W		I
									24		I		N		G
									25		I		D		L
									26		E		Z		S
									27		N		I		E
									28		P		R		E

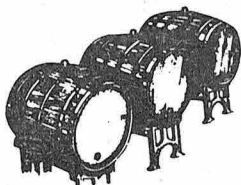
The Bitter Experience

REAL ALE OFF LICENCE

129 Lee Road, Blackheath, SE3. Tel: 852 8819
216 Broadway, Bexleyheath, Kent. Tel: 304 2839

DRAUGHT BEER
Always available
from our temper-
ature controlled
cellar on view
from the shop.

OVER 70 BREWS
AVAILABLE in
polypins (4½ gal)
& firkins (9 gal).



*Selection of over
80 wines with
case discounts.*

Local delivery service.

Wholesale rates on
application.

ALAN GREENWOOD'S BEER AGENCY AND WINE SELECTION

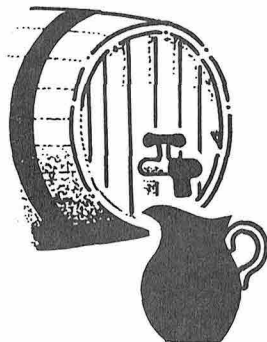
NEW BEER DISPENSERS AT GREENWOOD'S

Alan Greenwood's Beer Agency, the original Real Ale Off-Licence Service have now installed the new Grundy Beer Dispensers at five of their shops; Wallington, Tolworth, Wimbledon, Kennington and the new one at Clapham. The new equipment dispenses beer accurately from 1 pint upwards for jug sales and polypin refills.

The new equipment uses no pressure and the quality, flavour and palate of the beer is as pure as it would be served by gravity direct from the cask. Draught beer provide the best value take home beer, so whether you're watching TV, playing cards, having a party, gardening or decorating, why not drop in for your take home beer and see the new equipment in action for yourself.

Enjoy a really Traditional Home~Pint

Jugs & Homesize Casks of Beer. Fresher tastier and up to 20p a pint cheaper than cans.



REAL ALE FOR BARBECUES,
PICNICS, PARTIES.

OPEN MON - SAT 10.30 - 1.30 5.45 - 9.30 SUN 12 - 2.00 7 - 9.00 p.m.



IT IS ALWAYS ADVISABLE TO
ORDER BARRELS IN ADVANCE

BRING THIS AD. FOR
SPECIAL DISCOUNTS

OVAL SE11
226 Kennington Park Road
01-735 3036

OLYMPIA W14
17 North End Road
01-603 4978

LEWISHAM SE13
252 Lewisham High Street
01-852 8360

WIMBLEDON SW 19
308 Haydons Road
01-542 3725

KINGSTON SURREY
1 Hawks Road
01-549 7811

TOLWORTH SURREY
120 The Broadway
01-390 3446

WALLINGTON SURREY
8 Butter Hill
01-669 5158

CLAPHAM SW4
215 Clapham Park Road
01-720 6999

**REPRESENTING THE NATIONS BEERS
& THE WORLD'S WINES**

CUT ALONG DOTTED LINE

Home Cask and Wine Delivery Service 01-390 3446

SUN LOVERS



Alan Greenwood's Beer Diary ●

THE GLASS drinking vessel, for beer drinking anyway, is a fairly new invention. Until this century our forefathers were more likely to quench their thirst, whether for ale, beer or cider, from either pewter, earthenware or, for the chosen few, from silver or gold. For some unknown reason I've never drunk from gold or silver but I do have a fine earthenware and a pewter pot. They are very good and what I find particularly pleasing is that they somehow impart a refreshing coolness to the beer.

The phasing out of pewter and earthenware in favour of glass had major implications for the brewers of the day. Until that time, both brewers and publicans could get away with a multitude of sins in their beer. Who could tell if it were clear, hazy or downright muddy? With glass, people could see the state of it and, of course, they wanted clarity. New words appeared in advertisements: 'Brilliant Ales' (Brickwoods), 'Crystal Ales' (Eldridge Pope), 'Sparkling Ales' were descriptions used by many brewers. A lot of companies found the best, and sometimes the only, way to ensure clarity in their beers was to concentrate on bottled ones. This led to such a boom in bottled beer that at its peak it accounted for 36% of all beer produced.

Whilst the brewers were gearing their products for the new standards, glass drinking vessels were keeping pace. The glass manufacturers were ever conscious of producing the right glass for each beer so over the years there have been many different styles. One that started out as one of these specialist styles and is still in popular use today is also a constant tribute to a great beer: the Worthington White Shield. The pouring of this beer at eye level with a straight arm is an art for which only a Worthington Glass will do.

Having the right vessel to drink from may of course just be psychological. Drunk from a cup it has always tasted funny. Similarly, with a gaily-coloured glass, even if I know for certain it has not been used for flowers the previous week. Drinking from plastic however is another matter, as there are some cheap disposable types about which so taint beer that they should not be used.

At the same time it must be accepted that plastic technology has come a long way and there are now plastics on the market that do not taint, are non-toxic and are reasonably acceptable. Plastics will, because of many practical

advantages, become more common. As long as there are imbeciles in any crowd gathering who exercise their stupidity by throwing glass about plastics will, in certain cases, become mandatory. Having said that, it is unlikely they will ever take over, for to achieve the satisfactory standard of purity they are very expensive, more so than even glass.

Whether you prefer to drink from glass, plastic, pewter, earthenware or of course gold or silver, they all have to be cleaned and no notes on drinking vessels would be complete without mention of the appalling way this is often done. In many pubs they are dunked just once into water, which is quite inadequate to remove possible infections. They are then dried with a tea-cloth that has probably also been used to dry up ash trays. It says a lot for British resilience that we are not continually plague-ridden. Apart from disease, there is the fact that as customers we are looking for a good pint. If it goes flat because the last chap using the glass was eating crisps or peanuts it's no good. A lot of science has gone into pub glass washing and special washing liquids have been developed that are both effective and do not spoil the beer. So there are no excuses.

In Scotland it is etiquette to be served with a fresh clean glass every time you are served with a pint. Down south, people prefer to re-use the same glass once it has been, as they say, broken in. Perhaps the best, certainly the homeliest and nicest situation is to find a pub that will let you use your own personal, favourite drinking vessel. There are problems if it is not accurate or stamped, which I shall go into next month, but there are many instances when it is acceptable and it can be a good sign when seeking out a new pub to see the special pots hanging up.

There is no finer gift to give a beer drinker as they reach that settled stage in their drinking career than their own special drinking pot, but with so many different preferences do make sure it's the right type.



Jim and Jan
Welcome you to
the

LORD NELSON

262 OLD STREET EC1

Featuring:

WEBSTERS

YORKSHIRE BITTER

MANNS IPA

LONDON BITTER

62p pint

SUPER STAG

Pub Grub Lunchtime and Evenings

7 days a week

A La Carte Restaurant

Monday — Friday Lunch

Real Beer in London ~ update 6

All beer served by handpump.

Amendments

WC2 **Brewmaster.** Delete Fremlin: Tusker
 EC2 **Pump.** Renamed **Hand Pump.**
 E1 **Hayfield.** Add Bass.
 E1 **J.J.'s Free House.** Add Bass; Godson:
 Black Horse; Young: Special bitter;
 Younger: No.3.
 E2 **Hop Picker.** Add Courage: Directors;
 Green King: Abbot.
 E2 **Crown.** Delete Charrington: IPA. Add
 Brakspear: Bitter; Young: Special bitter.
 E3 **Queen Victoria.** Add Ruddle: bitter.
 E13 **Duke of Edinburgh.** Delete Charrington:
 IPA. Add Charrington: Crown.
 N4 **Beaconsfield.** Add Courage: Directors.
 N6 **Victoria.** Add Flower: Original bitter;
 Bulmer: Traditional cider.
 N6 **Flask.** Add Taylor Walker: bitter.
 N7 **Duchess of Kent.** Delete Ind Coope: bitter.
 N7 **George.** Add Watney: Stag.
 N17 **Victoria.** Delete Charrington: Crown.
 NW1 **Crown & Anchor.** Renamed **Drummonds.**
 W1 **George (Gt. Portland St).** Add Adnam:
 bitter; Eldridge Pope: Royal Oak;
 Felinfoel: Double Dragon; Green King:
 IPA; Wells: Bombardier.
 WC2 **Gilbert & Sullivan.** Delete: Fremlin:
 Tusker.
 WC2 **Sherlock Holmes.** Add Fremlin: Tusker.
 WC2 **White Horse.** Add Fremlin: Tusker.
 EC1 **Shakespeare.** Add Ind Coope: bitter.
 EC2 **Dirty Dicks.** Delete Charrington: IPA.
 EC2 **Jazz Bar.** Add Tolly Cobbold: Original.
 EC2 **Maggie Hotel.** Add Ind Coope: Burton Ale
 EC3 **Mitre.** Add Younger: IPA.
 EC3 **Ship, Talbot Ct.** Add Ind Coope: Bitter.
 E1 **Romford Arms.** Delete: Ind Coope: Burton
 Ale. Add Ind Coope: bitter.
 E1 **Three Cranes.** Add Ind Coope: Burton Ale.
 E13 **Duke of Edinburgh.** Delete Charrington:
 IPA. Add Charrington: Crown bitter.
 E17 **Lord Brooke.** Delete Bass.
 BARKING **Brewery Tap.** Add Taylor Walker: bitter.
 CHADWELL **White Horse.** Add Ind Coope: Burton Ale.
 HEATH
 DAGENHAM **Three Travellers.** Delete Ind Coope:
 Burton Ale. Add Romford: Brewers bitter.
 GOODMAYES **Lord Napier.** Delete Ind Coope: bitter.
 HORNCHURCH **Bull.** Delete Ind Coope: bitter. Add
 Romford: Brewers bitter.
 ILFORD **Red Cow.** Add Ind Coope: bitter.
 RAINHAM **Astronaut.** Renamed: **Friendly Hand.**
 RAINHAM **Bell.** Delete Ind Coope: Bitter. Add
 Romford: Brewers bitter.
 ROMFORD **Morland Arms.** Delete Ind Coope: KK
 Mild.
 N3 **Joiners Arms.** Delete Bass.
 N9 **Cock Tavern, Hartford Rd.** Add Bass.
 N15 **Fountain.** Delete Ind Coope: bitter. Add
 Taylor Walker: bitter.
 N16 **Robinson Crusoe.** Add Charrington: IPA.
 N20 **Griffin.** Add Ind Coope: bitter.
 BARNET **Mitre.** Add Benskins: KK Mild.
 ENFIELD **Golden Hive.** Delete Charrington: Crown.
 Add Bass; Charrington: IPA.
 ENFIELD **Old Park Heights.** Delete Greene King: KK
 Mild. Add McMullens: Country bitter.
 NW1 **Caernavon Castle.** Add Taylor Walker:
 bitter.
 NW1 **Gloucester Arms.** Delete Ind Coope: bitter.
 Add Taylor Walker: bitter.
 NW1 **Goat In Boots.** Delete Ind Coope: bitter.
 Add Taylor Walker: bitter.
 NW1 **Hope & Anchor.** Delete Ind Coope: bitter.
 Add Taylor Walker: bitter.

NW3 **Stag.** Add Courage: Best bitter.
 NW5 **Pineapple.** Delete Ind Coope: bitter. Add
 Taylor Walker: bitter.
 SE1 **Horse & Groom.** Add Younger: IPA.
 SE1 **Victory Bar.** Delete Courage, Greene King,
 Ruddle and Young beers. Add Arkell: BBB
 Kingsdown; Young: bitter.
 SE1 **Wellington.** Add Arkell: Kingsdown.
 SE10 **Trafalgar Tavern.** Delete Watney: Stag.
 Add Webster: Yorkshire bitter.
 THORNTON **Prince of Wales.** Delete Ind Coope: bitter.
 HEATH **Add Taylor Walker: bitter.**
 SW1 **King William IV.** Delete Ind Coope: bitter.
 Add Taylor Walker: bitter.
 SW3 **Moore Arms.** Delete Ind Coope: bitter.
 Add Taylor Walker: bitter.
 W3 **Red Lion.** Renamed **Red Lion & Pineapple.**
 W11 **Duke of Norfolk.** Add Tamplin: bitter;
 Webster: Yorkshire bitter.
 W11 **Frog & Firkin.** Delete Bruce: Portobello
 porter; Ind Coope: Burton Ale. Add
 Adnam: bitter; Bruce: Strong porter (OG
 1053); Pilgrim: Progress bitter.
 W14 **Radnor Arms.** Delete Bass, Charrington:
 Add Eldridge-Pope: Royal Oak; Everard:
 Tiger; Godson: Best bitter; Ruddle: bitter.
 W14 **Three Kings.** Delete Hook Norton: bitter;
 Truman: Tap. Add Sam Smith: IPA;
 Wadworth: Old Timer; Eldridge Pope:
 Royal Oak; Studley: Stud bitter.
 HAMPTON **Bell.** Delete Ind Coope: bitter; Add Taylor
 Walker: bitter.
 HAMPTON **White Hart.** Add King & Barnes: bitter,
 Festive, Old; Young: bitter, Special (choice
 of 6 beers from overall range).
 TWICKENHAM **Cherry Tree.** Add Friary Meux: bitter; Ind
 Coope: bitter.
 SW1 **Royal Court Tavern.** Add Eldridge Pope:
 IPA, Royal Oak; Ringwood: bitter.
 SW3 **Bunch of Grapes.** Add Chudley: bitter.
 SW6 **Wheatsheaf.** Add Flower: Original bitter
 (and video juke box).
 SW7 **Anglesea Arms.** Delete Wadworth. Add
 Greene King: Abbot.
 SW7 **Norfolk Arms.** Add Fuller: London Pride.
 SW10 **Finborough Arms.** Add Fremlin: Tusker.
 SW10 **Kings Arms.** Add Courage: Best bitter,
 Directors.
 SW11 **Battersea Fair.** Renamed **Battersea Tavern.**
 SW16 **Mitcham Mint.** Delete Ind Coope: Bitter.
 Add Taylor Walker: bitter.
 NEW MALDEN **Fountain.** Add Courage: Best bitter.
 NEW MALDEN **Railway Hotel.** Add Taylor Walker: bitter.
 W2 **Kings Head.** Delete Truman: Tap. Add
 Truman: Best bitter.
 W14 **Seven Stars.** Delete Fuller: Chiswick bitter
 (bright bitter on (H))
 W14 **Warwick Arms.** Add Fuller: Chiswick
 bitter (Delete 'Bright').

CORRECTION TO UPDATE 4

SW1 **Two Chairman.** Add Webster: Yorkshire
 bitter.
Additions
 SW19 **Nag's Head,** 30 Morden Rd. Charrington
 IPA.
 SW19 **Royal Standard,** 180 High St., Colliers
 Wood. Charrington: IPA.
 KINGSTON **Duke of Cambridge,** Cambridge Rd.
 Courage: Directors.
 KINGSTON **Norhoun,** 16 Clifton Rd. Mann: IPA;
 Waney: London Bitter, Stag.

Continued

MITCHAM **Gardeners Arms**, 107 London Road.
Truman: Mild, bitter, Best bitter.

MITCHAM **Bucks Head**, Fair Green, Charrington:
IPA.

MORDEN **Beverley**, Lower Morden Lane, Webster:
Yorkshire bitter.

MORDEN **Morden Tavern**, 144 Central Rd. Truman:
Bitter, Best bitter.

RICHMOND **Crown**, 125 Lower Mortlake Rd. Truman:
Mild, bitter, Best bitter.

W2 **Sir Alexander Fleming**, 16 Bouverie Pl.
Mann: IPA; Watney:
London bitter, Stag; Webster: Yorkshire
bitter.

W6 **Cambridge Arms**, 54 Cambridge Grove.
Webster: Yorkshire bitter.

W10 **Caernavon Castle**, 310 Portobello Rd.
Truman: Best bitter.

W12 **Pavilion**, Wood Lane. Flowers: Original
bitter; Wethered: bitter; Bulmer:
Traditional cider.

FELTHAM **Ale House**, High St. Mann: IPA; Watney:
London bitter, Stag; Webster: Yorkshire
bitter.

HANWORTH **Horse & Groom**, The Mount. Watney:
London bitter; Webster: Yorkshire bitter.

HAYES **Carpenters Arms**, 1370 Uxbridge Rd.
Truman: Best bitter.

HEATHROW **Pilots Arms Bar**, Terminal One. Wethered:
SPA.

HOUNSLOW **Red Lion**, 210 High St. Watney: London
bitter, Stag.

ISLEWORTH **Rose & Crown**, 333 London Rd. Watney:
London bitter, Stag.

NORTHOLT **Byron**, Ruislip Rd. Truman: Best bitter.

RUISLIP **Deane Arms**, Long Drive, Benskin: Bitter.

TEDDINGTON **Horse & Groom**, 11 Waldegrave Rd.
Watney: London bitter, Stag.

TWICKENHAM **Ailsa Tavern**, 263 Margarets Rd. Watney:
London bitter, Stag; Webster: Yorkshire
bitter.

TWICKENHAM **Black Dog**, 11 London Rd. Watney:
London bitter, Stag.

WEST DRAYTON **Red Cow**, High St. Truman: Bitter.
Best bitter.

WEST DRAYTON **Six Bells**, 123 Station Rd. Truman: Bitter.
Best bitter.

If you know of any pub that has started selling draught beer or whose details in **Real Beer In London**, are incorrect the compilers would be very pleased to hear from you. Please write to: RBIL Update, 2 Sandtoft Rd., SE7.

The Pub Information Centre



ALL YOU WANT TO KNOW ABOUT PUBS IN & AROUND LONDON

Pubs with function rooms
Or with restaurants
Thames-side pubs
Pubs with gardens and patios
Pubs with live entertainment
Or with discos
Historic pubs
Even haunted pubs!

* Just 'phone us and we will post you detailed information. Or see if we can answer your query on the 'phone.

222-3232

A FREE SERVICE

2 Caxton St, London SW1H 0QE.

WHERE TO BUY LONDON DRINKER

OUTLETS - SOUTH-WEST/WEST

Pubs

SW1 **BUCKINGHAM ARMS**, Petty France
SW1 **FOX & HOUNDS**, Passmore Street
SW1 **NAG'S HEAD**, 53 Kinnerton Street
SW1 **RED LION**, 48 Parliament Street
SW1 **ROYAL COURT TAVERN**, 8 Sloane Sq.

SW1 **WILTON ARMS**, 71 Kinnerton Street
SW4 **JOLLY GARDENERS**, 115 St Alphonsus Road.
SW5 **CLARENCE**, 148 Old Brompton Road.
SW6 **WHEATSHEAF**, 562 King's Road
SW7 **ANGLESEA ARMS**, 15 Selwood Terrace
SW7 **NORFOLK TAVERN**, Harrington Rd.
SW8 **PRINCE OF WALES**, 99 Union Rd.

Continued
Back Page

JOIN THE ALE TRAIL CLUB



Ask at the Bar for your
ALE TRAIL PASSPORT

Get your own exclusive
CLUB SWEATSHIRT or
DARTINGTON TANKARD



COME OUT INTO THE COUNTRY!

The beautiful Sussex Countryside is less than an hour away from the centre of London. Use your ALE TRAIL PASSPORT as a guide to all 58 K & B Houses Serving Traditional Sussex Draught Beers by Handpump.

A pint and a sticker in each will earn you a Sweatshirt or a Dartington Tankard. PASSPORTS are available in any K & B House, or from The Brewery, 18 Bishopric, Horsham, W. Sussex, RH12 1QP. THERE IS NO TIME LIMIT.



King & Barnes Ltd.

Brewers of Traditional Draught Beer
for over a Century



FINE SUSSEX ALES

WHERE TO GET LONDON DRINKER CONTINUED

SW12 GROVE, 39 Oldridge Road.
 SW12 PRINCE OF WALES, 270 Cavendish Rd.
 SW16 LEIGHAM ARMS, Wellfield Road.
 SW16 MITCHAM MINT, Lillian Road.
 SW16 PIED BULL, 418 Streatham High Road.
 SW17 KING'S HEAD, Upper Tooting Road.
 SW19 ALEXANDRA, Wimbledon High Road.
 SW19 KING'S HEAD, Merton High Street.
 SW19 PRINCESS ROYAL, Abbey Road.
 W1 WORCESTER ARMS, 89 George Street.
 W1 ANGEL, Thayer Street.
 W1 CARPENTER'S ARMS, Seymour Place
 W1 BRICKLAYER'S ARMS, Aybrook
 W5 RED LION, St Mary's Road.
 W6 CROSS KEYS, 157 Black Lion Lane.
 W6 THATCHED HOUSE, 115 Dalling Road.
 W6 TRUSCOTT ARMS, Shirland Road
 W11 EARL LONSDALE, 281 Westbourne Rd.
 W11 FROG & FIRKIN, Tavistock Crescent.
 W14 BRITANNIA TAP, 150 Warwick Road.
 W14 RADNOR ARMS, 247 Warwick Road
 BEDDINGTON PLOUGH, Croydon Road
 CARSHALTON FOX & HOUNDS, High Street
 CARSHALTON GREYHOUND, 2 High Street
 CHEAM PRINCE OF WALES, Morden Road
 GREENFORD BLACK HORSE, Oldfield Lane
 HAMPTON WINDMILL, Windmill Road.

HOUNSLOW
 HOUNSLOW
 MITCHAM
 MITCHAM
 MITCHAM
 MITCHAM
 OSTERLEY
 Green. SUDBURY
 SURBITON
 SURBITON
 SUTTON
 SUTTON
 TWICKENHAM
 OFF TRADE
 SW4
 SW11
 SW11
 SW19
 W14
 KINGSTON
 TOLWORTH
 WALLINGTON
 CLUBS
 SW12
 NEW OUTLETS
 PUBS
 SW13
 SW18
 EARL RUSSELL, Hanworth Road
 WHITE BEAR, 198 Kingsley Road.
 BULL, 32 Church Road
 CRICKETERS, 340 London Road.
 KINGS ARMS, 260 London Road.
 QUEEN'S HEAD, Cricket Green.
 HARE & HOUNDS, Syon Park, Wyke
 BLACK HORSE, Harrow Road
 RAILWAY TAVERN, Ewell Road.
 VICTORIA, Victoria Road.
 LORD NELSON, Lower Road
 NEW INN, 18 Myrtle Road.
 EEL PIE, 9 Church Street.
 Alan Greenwood's, 215 Clapham Park Rd.
 Majestic Vintners, Hester Road.
 39er, Webbs Road.
 Alan Greenwood's, 308 Haydon's Road.
 Alan Greenwood's, 17 North End Rd.
 Alan Greenwood's, 1 Hawkes Rd.
 Alan Greenwood's, 120 The Broadway.
 Alan Greenwood's, 8 Butter Hill.
 Grafton Tennis Club, Thorton Road.
 RED LION, 2 Castlenau.
 CRANE, 14 Armoury Way.

JOIN NOW and have fun protecting your pint!

FULL MEMBERSHIP OF CAMRA offers you:

- * A member's handbook
- * 12 copies of "What's Brewing" – the Campaign's entertaining and highly regarded monthly newspaper.
- * Generous discounts on a wide range of CAMRA products and publications (including the best selling GOOD BEER GUIDE).
- * An invitation to join in all CAMRA activities such as brewery trips, branch meetings, socials, conferences and beer exhibitions.

APPLICATION FOR MEMBERSHIP

I/We wish to become a member (s) of the CAMPAIGN FOR REAL ALE LTD.
 I/We agree to abide by the Memorandum and Articles of Association of the CAMPAIGN.
 I enclose £5 (£7 overseas) for FULL MEMBERSHIP
 We enclose £6 for HUSBAND AND WIFE MEMBERSHIP
 Or, I/We enclose completed STANDING ORDER AUTHORITY

(Any additional amount will be welcomed as a donation)

FULL NAME

(block capitals)

FULL POSTAL ADDRESS

(block capitals)

SIGNATURE

DATE

Cheques should be made payable to Campaign For Real Ale Ltd. Applications should be sent to CAMRA,
 34 Alma Road, St. Albans, Herts, AL1 3BW.

